



Dear Parents and Carers 20.09.21

This week we will be looking at the nursery rhyme 'Incy Wincy Spider'. We will be learning the rhyme and the actions to go with it.

During the week we will be exploring what wet means by exploring what different materials look and feel like when wet compared to when they are dry. As part of the 'Family' display in the nursery, your child is still invited to bring in a photo of them and their family to add to the display. This can be emailed to the nursery if you wish. Thank you to those who have already sent photos in. We would like to ask that if your child comes to the nursery with nappies, please could you also provide some wipes as well to support times of changing.



Word of the Week



spider

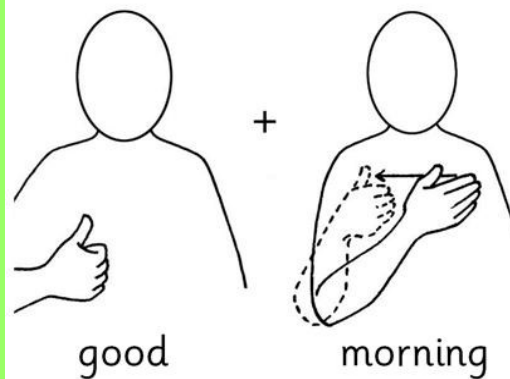
Concept of the Week



Wet

Sign of the Week

Good Morning



Rhyme of the Week- Incy Wincy Spider

At home you could talk about wet and not wet when doing activities such as washing up and drying. Encourage the children to identify and talk about which objects are wet and not wet and how they feel in comparison.