

# King County Promise: System Level Strategies

Phase 1 Readiness Work Session  
Monday, September 27, 2021



# Welcome

---

- Please mute your computer or device
- Please introduce yourself in the chat
  - Name
  - Preferred pronouns
  - School/org
- We encourage you to leave questions and comments in the chat throughout the meeting





# Allegiance and Acknowledgement

## PSED PEOPLE, LAND AND WATER ACKNOWLEDGMENT

Puget Sound ESD (PSED) recognizes the way to true reconciliation starts with facing and accepting our past, which is rooted in colonization, imperialism, and white supremacy, and authentically moving towards honoring the Indigenous peoples and land we occupy. PSED acknowledges that the regions we support and occupy are the ancestral territories of the [Coast Salish](#) people. As the original stewards of the land, the Coast Salish people are comprised of tribes that spanned across the Pacific Northwest Coast of [Turtle Island](#).

PSED recognizes that there are [29 federally recognized tribes](#) in the state of Washington and five tribes in the state that are not recognized by the U.S. federal government. Our region of service includes the tribes of: [Duwamish](#), [Muckleshoot](#), [Nisqually](#), [Puyallup](#), [Skokomish](#), [Snoqualmie](#), [Stillaguamish](#), [Stellacoom](#), and [Suquamish](#).

PSED physical spaces reside on the traditional lands of the Duwamish Tribe, Muckleshoot Indian Tribe, and Puyallup Tribe, who historically lived throughout the [Black](#), Cedar, Green, Puyallup, and White River watersheds. The PSED Renton office sits on the ancestral Dwamish village named skoh-AHL-koh, which means Confluence.

PSED recognizes that our federal government has stolen land and broken treaties, especially the treaties of [Medicine Creek](#) and [Point Elliott](#). We are committed to creating a racially just education system that educates all students on the colonization and the ultimate resurgence of Indigenous Peoples' traditions and culture where they continue to be an integral part of today's society. By learning to lead with transformational values and disrupting patterns of white supremacy, PSED calls to action the practice of [Seventh Generation](#) thinking in honoring the people and land.





# AGENDA

**1**

**King County Promise Overview**

**2**

**Overview of Systems-Level Strategies**

**3**

**Q&A and Breakout Discussions**

**4**

**Next Steps**

# Session Outcomes:

## King County Promise System Level Strategies

---

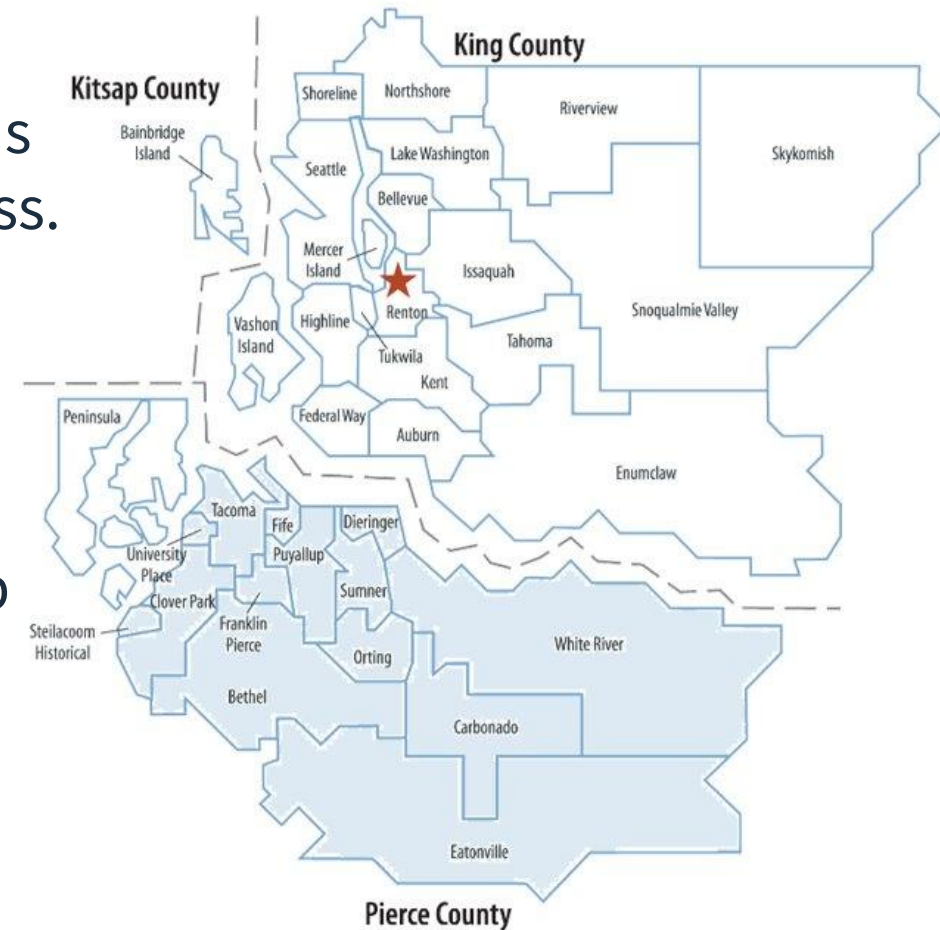
1. Ensure interested parties have:
  - a. A clear understanding of the strategies and commitment associated with the system level strategies within King County Promise
  - b. Guided work time to reflect on readiness for first phase of King County Promise

# Who We Are

Puget Sound College & Career Network (**PSCCN**) builds **regional capacity** to increase postsecondary readiness.

- Professional learning and resources;
- Coaching and technical assistance;
- Pilot support and innovation;
- Systems alignment, coordination and partnership development; &
- Systemic barrier identification and removal.

We are committed to **removing barriers** so **first generation, low income, and students of color** have the opportunity to access & obtain postsecondary credentials.



# Who We Are

---



## PSCCN Team

**Naveed Badri**, PSCCN Manager

**Leila Crist**, PSCCN/CINRE Program Coordinator

**Christian Granlund**, PSCCN Manager

**Dinda Davis**, PSCCN Program Coordinator

**Mercy Daramola**, Interim Postsecondary Director

**Hailey Karcher**, UW PhD Fellow





# King County Promise Vision

All youth of color and other historically underserved young people, receive **high quality support** to choose, pursue, and succeed in their postsecondary path

**Substantial system capacity** is built across K-12, higher education, and communities to ensure more equitable support

Our institutions make **significant improvements to coordinate, align, and simplify** the journey to completion

**Demonstrate to the state** the programming, evidence-based practices, and staffing levels needed to achieve high postsecondary enrollment and success rates





# King County Promise End State

- **Student-level:** Increase postsecondary attainment of KCP served youth to 70%, with no gap in attainment rates between prioritized young people and their peers
- **Partner-level:** K-12 districts, postsecondary institutions, and community-based organizations in King County collaborate to create a cohesive, equity-focused P-16 educational system that supports postsecondary transitions and success for young people.
- **System - level:** Demonstrate to Washington State that the King County Promise model's strategies and outcomes can be sustained and replicated across the state ensuring all of Washington's young people have access to a high-quality postsecondary education that leads to family-wage jobs in the high-demand labor market.

# King County Promise will operate on a phased implementation plan

	2021	2022	2023	2024	2025-2027
<b>Phase 1 Partnerships</b>	Q4: RFP release	Q1:Partnerships selected Q2: Planning Q3: Partnership launch	Programming	Q1: Contract renewal Programming	Programming
<b>Phase 2 Partnerships</b>			Q4: RFP release	Q1:Partnerships selected Q2: Planning Q3: Partnership launch	Programming

## Long Term Goals

- All King County CTCs and public high schools are participating in Promise partnerships
- Students of color and students who have been historically underserved by education systems receive individual supports that make them ready to access college and complete postsecondary credentials

PSCCN  
Support



# General Information about RFP Process

---

King County-DCHS will tentatively release the Request for Proposal (RFP) for King County Promise--Phase 1 online in October 2021 for partnerships interested in implementing the King County Promise model in the fall of 2022. RFP details are still being confirmed.

## Get acquainted with the DCHS RFP process:

- **Virtual Info Session:** Once the RFP is released, DCHS will host virtual info sessions for interested applicants to learn about the opportunity and how to apply. These info sessions will also be recorded and made available for viewing.
- **Technical Assistance (TA):** TA support for interested applicants will be available at no cost. Trained TA consultants will be available to assist applicants in engaging in the RFP materials, building proposals, and working with partners.
- **RFP Duration:** We plan to have the RFP open for 6-8 weeks to give partnerships ample time to build their proposals for this RFP.
- **Contracting with DCHS:** New to the DCHS RFP Process? You can view the [Contracting with DCHS page](#) to learn about how contracting works and to see any open RFPs. Proposals responding to DCHS RFPs are generally submitted through [Zoom Grants](#).





A photograph of four students walking away from the camera down a long, brightly lit hallway with high ceilings and arched windows. The students are dressed in casual attire, including jeans, t-shirts, and backpacks. The image is overlaid with a semi-transparent blue rectangle, and the title text is centered within this rectangle.

# Who is King County Promise for?



# King County Students and Young People

**Exclusive focus on** youth of color, youth from families at/below 200% of the federal poverty level, youth who identify as LGBTQ+, youth who experience homelessness or foster care, youth with disabilities, and other young people who have been **historically underserved** in King County, age 26 and under

- High school students
- CTC students
- Opportunity youth and working young people

# Promise Students

---



WE  
SUPPORT  
THE  
KING  
COUNTY  
PROMISE

## K-12 students at KCP High Schools

- Whole building - 10<sup>th</sup> and 11<sup>th</sup> graders in the **KCP Prioritized Population** will receive “whole school supports”
- Senior Class Cohort - Students complete a **Promise Student Pledge by fall of 12th grade year**
- Pathway Partner Cohort - Students who plan to attend the partner CTC

## Opportunity Youth

- Young people in the KCP Prioritized Population enrolled in a re-engagement or alternative program or not enrolled in school as indicated by completing **Promise Student Pledge**
- Not currently employed (or not employed in a job with family-sustaining wages)
- Do not already hold a two- or four-year degree

## CTC students

- High School or Opportunity Youth Students in the KCP Prioritized Population enrolling from Promise Partnership high school or opportunity youth program
- Students in the KCP Prioritized Population enrolling from outside of the Promise Partnership



# Promise Organization Types

## K-12 Districts

All public K-12 districts in King County and any King County charter school serving students in grades 9-12

## K-12/CTC Student Serving CBOs

Any non-profit currently serving King County high school and/or CTC students with college access and/or success support services

## Opportunity Youth Serving CBOs

Any non-profit currently serving King County opportunity youth (disconnected from school and living wage jobs) with college access and/or success support services

## Community & Technical Colleges

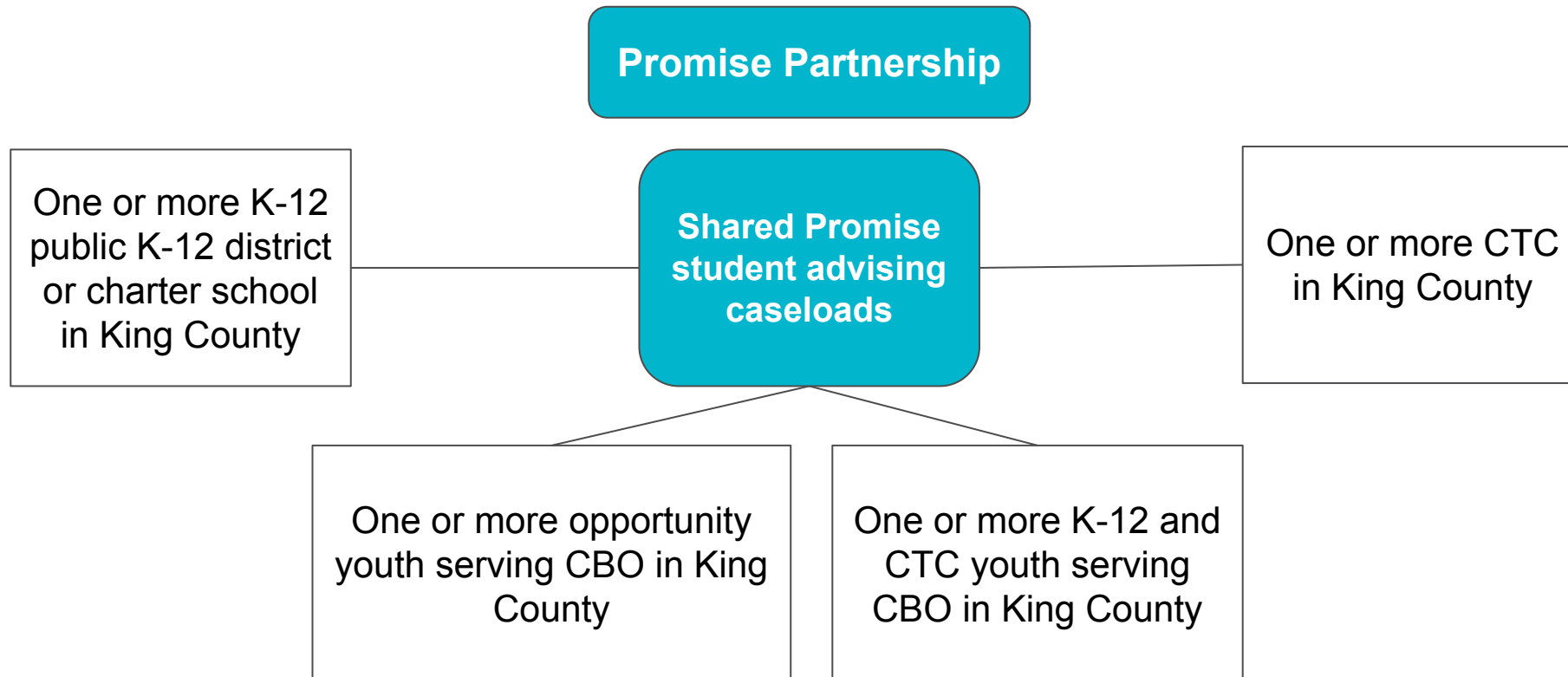
All community and technical colleges in King County (public, two-year colleges)

WE  
SUPPORT  
THE  
KING  
COUNTY  
PROMISE

- ❖ *Entities apply as a “**Promise Partnership**” focused on a shared group of young people in the Promise priority population*
- ❖ *Each entity within a partnership will receive direct funding*

# Promise partnership collaborate strengthen relationships across partners to better support prioritized students

---



A background image of four students walking away from the camera down a long, arched hallway. The students are wearing backpacks and casual clothing. The hallway has high ceilings with arches and a polished floor. A semi-transparent blue rectangle is overlaid on the image, containing the title text.

# System Level Strategies Overview



# King County Promise: System Level Outcomes

---

- ❖ For students:
  - Improved coordination of college and career support services
  - Senior year academic support for students below academic readiness criterion
- ❖ For staff:
  - High quality and cohesive college readiness curriculum and materials used in support of student advising
  - More integrated and well-coordinated CBO and school partnerships
- ❖ For systems:
  - Increased alignment and coordination between K-12 and colleges
  - Increased King County high schools developing college-going culture
  - Streamlined course placement policies and transcript access

# PSCCN & King County Promise

---

- Ensure overall cohesion across multiple program areas and partnerships
- Maintain a clear & consistent focus on addressing equity gaps
- Support the efficient & effective use & leverage of PSTAA & private funding

## **Roles:**

- Technical assistance, partnership support, professional learning, high quality materials
- Facilitate system improvement, continuous improvement, & cross system policy alignment
- Improve access to data and facilitate practitioner-led cycles of inquiry and improvement
- Communications & private fundraising and support high leverage of local public/private
- Advocacy & sustainability: model needed service levels and advocate for state investment
- Convene King County Promise advisory group and collaborate closely with King County

# King County Promise – System Level Strategies

---

## ❏ **Commitment to Racial Equity**

- ❏ Collaborative learning and leadership
- ❏ Continuous improvement and learning
- ❏ Data informed
- ❏ Sustainable policy and practice change





# System Level Strategy:

## Commitment to Racial Equity

### What will this look like?

- King County Promise advising curriculum and service delivery
- King County Promise advisor position requirements, selection and onboarding
- Ongoing training
- Partnership assessment

# King County Promise – System Level Strategies

---

- ❑ Racial Equity
- ❑ **Collaborative learning and leadership**
- ❑ Continuous improvement and learning
- ❑ Data informed
- ❑ Sustainable policy and practice change



# System Level Strategy:

## **Collaborative learning and leadership**

**What will this look like?**

### **Collaborative Learning**

- **Org/institution baseline and ongoing assessments**
  - Identifying institutional alignment and gaps related to existing PS advising support strategies and partnerships
  - Align Promise activities and strategies with existing postsecondary readiness and completion strategies (ie., TRiO, CCLI, GEAR UP, UWKC benefits hubs, Guided Pathways, MESA)
- Shared student caseload and service delivery between CBO, District and CTC advisors

### **Collaborative Leadership**

- **Representative Leadership and Implementation teams**
- **Collaborative development of high quality advising resources and materials**

# System Level Strategy:

## Collaborative learning and leadership

---

Staffed by PSSCN to focus on coordinated Promise services delivery and continuous learning, Partnerships will **designate and ensure active participation of key leadership representatives on the following:**

### Across King County

- Executive Leadership Team: to advise and inform PSSCN and DCHS leadership in execution of King County Promise high level systemic and programmatic decisions

### For Funded Partnerships

- Local Promise Network Leadership team: To address in-system and partnership level barriers that emerge as a result of KCP implementation
- Promise Practitioners Improvement Network: To support and implement programming at their respective institution and to develop a culture of learning and a desire to improve operational practices and processes related to efficiency, effectiveness, and student outcomes
- Promise Data Working Group: to support data sharing and analysis (e.g. Data Accountability/IR lead)
- Promise Fund Development Working Group: (e.g. Foundation Director, Development Director, etc.)
- Youth Advisory Group: To serve as guides and reality checks on programmatic decisions, messages, and to highlight common barriers.



# King County Promise – System Level Strategies

---

- ❑ Commitment to Racial Equity
- ❑ Collaborative learning and leadership
- ❑ **Continuous improvement and learning**
- ❑ Data informed
- ❑ Sustainable policy and practice change



# System Level Strategy: Continuous Improvement and Learning

---

## What will this look like?

- Phased Implementation
- **Assessment and Continuous Improvement:**
  - Partnership Assessment individual and partnership improvement plans
  - Promise advisor facing professional development - Practitioner improvement network to support student facing staff coordination, continuous improvement, use of data, and replication of high quality strategies
  - Org/institution ongoing assessment identifying institutional alignment and gaps related to existing PS advising support strategies and partnerships

# King County Promise – System Level Strategies

---

- ❑ Commitment to Racial Equity
- ❑ Collaborative learning and leadership
- ❑ Continuous improvement and learning
- ❑ **Data informed**
- ❑ Sustainable policy and practice change



# System Level Strategy: Data Informed

---

## What will this look like?

- **Data sharing agreements** established within and across Promise partnerships to track and report completion of Promise milestones including:
  - Promise students outcomes
  - Promise advisor activities
- **Data informed programmatic adjustments**
  - Implement simplified transcript transfer processes
- **Centralized data support:** Promise partners data sharing agreement, track and report outcomes, administer
- Administer and share results of **ongoing assessment** of Local Promise Partnership including:
  - Promise Student Survey



# Data Systems

A photograph of four students walking away from the camera down a long, arched hallway. The students are wearing backpacks and casual clothing. The image is overlaid with a semi-transparent blue filter, and the title 'Data Systems' is centered in white text.

# Data System Improvement

---

- *Student-level goal*

- Increase postsecondary attainment by age 26 of King County Promise-served youth to 70 percent, with no gap in attainment rates between prioritized young people and their peers.

- *Partner-level goal*

- K-12 districts, postsecondary institutions, and community-based organizations in King County collaborate to create a cohesive, equity-focused P-16 educational system that supports postsecondary success for young people.

## *Data System Goal:*

Student centered and action oriented centralized data system, and data sharing and management approach across K-12, CTC, CBO and SSO to facilitate coordinated and responsive student level advising support, increase/improve access to relevant quantitative and qualitative data and support streamlined course placement policies and transcript access

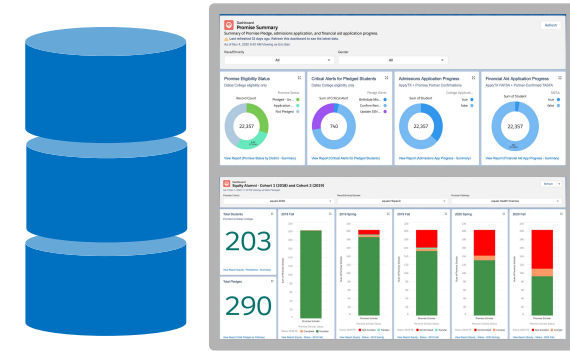
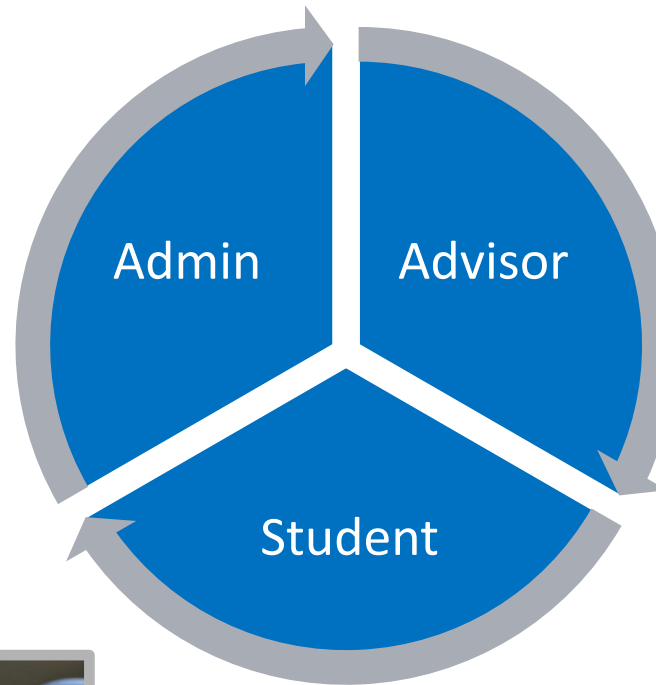
# Regional Tools:

Producing equitable college and career outcomes requires the activation of real time data on scalable platforms:

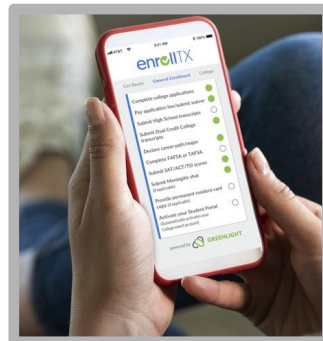


## Reporting and Visualization:

Dashboards for real time progress monitoring



**CRM:** Database + case management that moves data into a plan of action



**Learner Record:** empowering students and organizing data for real time activation

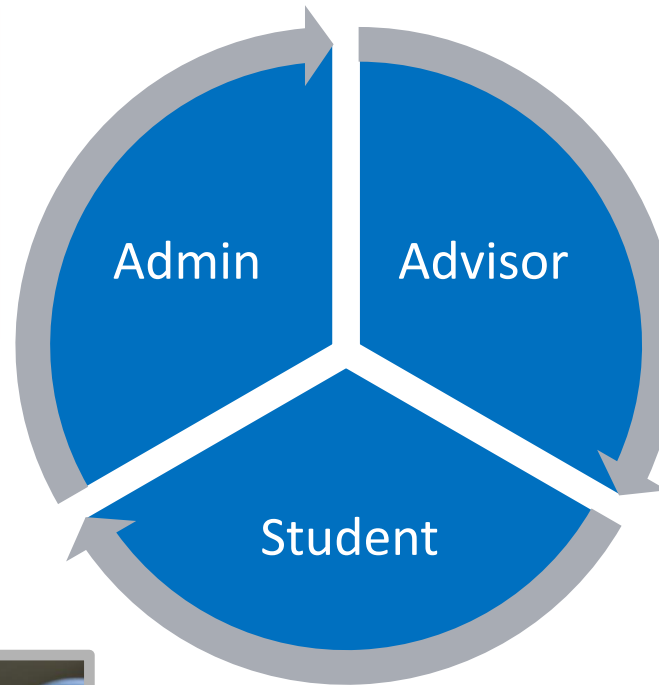
# Regional Tools:

Producing equitable college and career outcomes requires the activation of real time data on scalable platforms:

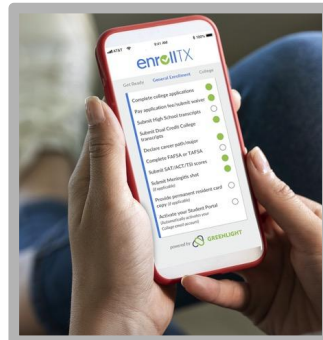


## Reporting and Visualization:

Dashboards for real time progress monitoring



**CRM:** Database + case management that moves data into a plan of action

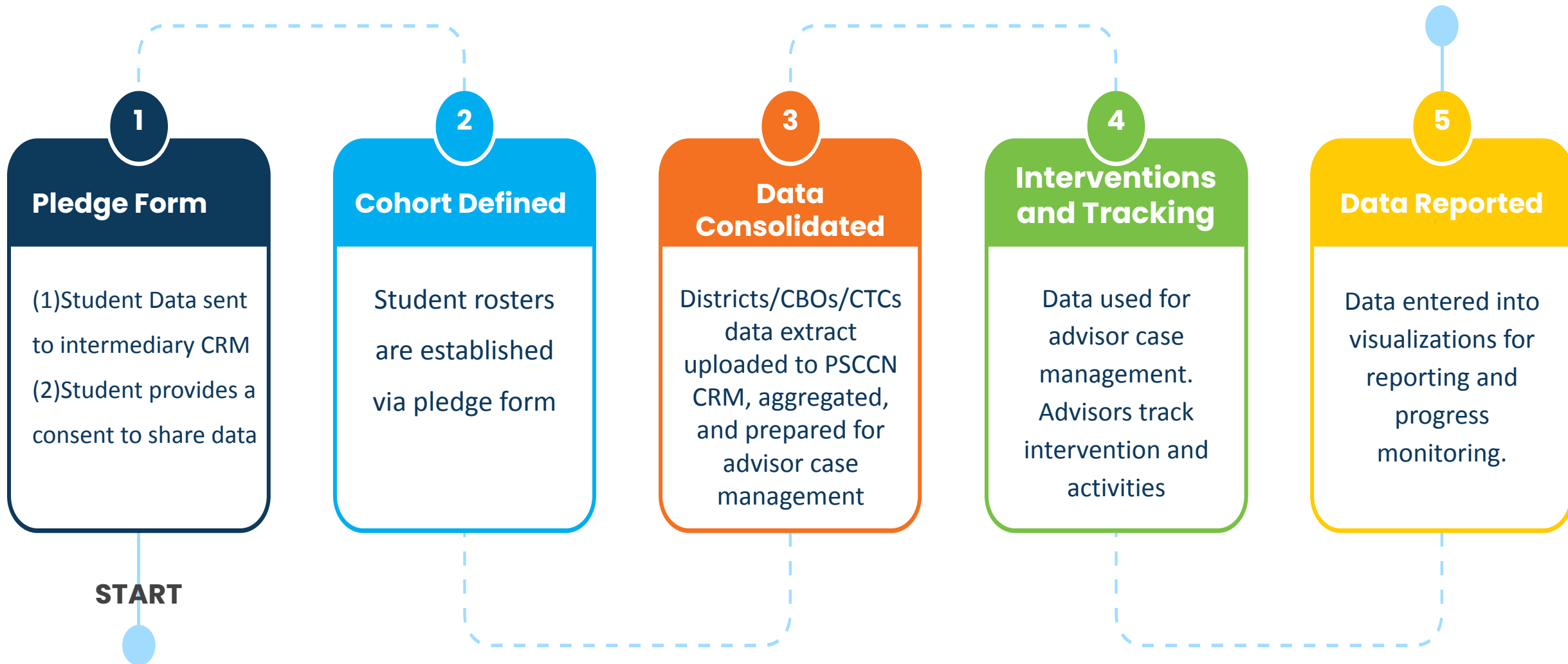


**Learner Record:** empowering students and organizing data for real time activation



# Data Flow

## MILESTONE



# King County Promise – System Level Strategies

---

- ❑ Commitment to Racial Equity
- ❑ Collaborative learning and leadership
- ❑ Continuous improvement and learning
- ❑ Data informed
- ❑ **Sustainable policy and practice change**



# System Level Strategy: Sustainable Policy and Practice Change

---

## What will this look like?

- Multiple measures
- Leadership Buy in/championing
- Execute fundraising and sustainability activities to facilitate the ongoing implementation and sustainability of SSO and partners' fundraising plan

A photograph of four students walking away from the camera down a long, arched hallway. The students are wearing backpacks and casual clothing. The image is overlaid with a semi-transparent blue filter. The text 'Worktime & Q/A' is centered over the image in a large, white, sans-serif font.

# Worktime & Q/A



# Questions

---



# Breakout Discussions

## Breakout Rooms - 30 minutes

How would you demonstrate your organization's readiness to meet King County Promise System level strategies?

- In what ways are you already prepared?
- In what ways do you need more support?
- How does COVID impact these strategies? How might be addressed the first phase of King County Promise?

# Ways to Learn More and Get Engaged

---

- 1) Sign-up for the King County Promise [Newsletter](#) or contact [KingCountyPromise@psed.org](mailto:KingCountyPromise@psed.org)
- 2) Learn more at <https://bit.ly/KingCountyPromise>
- 3) Phase 1 Readiness Work Session in September and October 2021- [Registration Links](#)
  - a) **Session 3:** Thursday, Sept. 30, 3:00pm-5:00pm→ Promise Partnerships
  - b) **Session 4:** Tuesday, Oct. 5, 10:00am-12:00pm→ Fundraising & Financial Commitments
  - c) **Session 5:** Monday, Oct. 11, 2:30pm-4:30pm→ Phase 1 Readiness Support Time

# King County Promise

## For More Information:

Sign up for King County Promise Mailing List:  
<https://bit.ly/KCPMailing>

## Specific Inquiries:

## Engagement/Outreach:

Naveed Badri | [nbadri@psed.org](mailto:nbadri@psed.org)

## General King County Promise Inquiries:

Mercy Daramola | [mdaramola@psed.org](mailto:mdaramola@psed.org)

Thank you!

