



VISIONARY LEADERS IN EDUCATION

THE CLEAR CREEK INDEPENDENT SCHOOL DISTRICT 2018-19 COMMUNITY BASED ACCOUNTABILITY REPORT

SIXTH EDITION
COPYRIGHT © 2020 CLEAR CREEK INDEPENDENT SCHOOL DISTRICT
REPRODUCTION OR DUPLICATION WITH WRITTEN PERMISSION ONLY

CLEAR CREEK INDEPENDENT SCHOOL DISTRICT
2425 E. MAIN STREET, LEAGUE CITY, TEXAS 77573
WWW.CCISD.NET



VISIONARY LEADERS IN EDUCATION

TABLE OF CONTENTS

Community Report Card	3
A Message to Our Community.....	4
Quality of Teaching Staff	5
Academics	6
Fine Arts & Athletics	6
College Entrance Exam Scores.....	6
Graduation Rates	6
Career & Technical Education Participation	7
Post-Secondary Decisions.....	7
Youth Truth Survey	8
District Financial Snapshot.....	8
Discipline.....	9
Classroom Sizes.....	9
Demographics.....	10
STAAR Achievement.....	10
Campus Enrollment.....	11
District Mission, Core Values, and Beliefs.....	12



CLEAR CREEK INDEPENDENT SCHOOL DISTRICT COMMUNITY REPORT CARD

*2018 Baseline Survey

If You Had to Give Clear Creek ISD a Grade, Would You Give It...

A	51%
B	37%
C	7%
D	2%
F	1%
Unsure	2%

Updated School Facilities

A	52%
B	37%
C	9%
D	0%
F	1%
Unsure	1%

Size of Classes

A	34%
B	41%
C	18%
D	4%
F	1%
Unsure	2%

Student Access to Technology

A	64%
B	29%
C	4%
D	1%
F	1%
Unsure	2%

Helping Educate Students to Become Persons of Character

A	54%
B	33%
C	9%
D	2%
F	1%
Unsure	2%

Strong College Preparatory Programs

A	44%
B	31%
C	6%
D	1%
F	0%
Unsure	17%

Providing For the Physical, Mental, and Emotional Health of the Students

A	38%
B	41%
C	15%
D	1%
F	2%
Unsure	4%

School Safety

A	55%
B	35%
C	7%
D	1%
F	1%
Unsure	1%

The Career and Technical Education Programs Offered in the Classroom

A	43%
B	35%
C	8%
D	2%
F	0%
Unsure	11%

Quality of Teaching Staff

A	51%
B	37%
C	9%
D	1%
F	1%
Unsure	1%

Having High Student Achievement

A	60%
B	31%
C	6%
D	0%
F	1%
Unsure	2%

Competitive Athletic Programs

A	43%
B	34%
C	9%
D	2%
F	1%
Unsure	11%

High Scores on National Tests Such As Act and SAT

A	39%
B	29%
C	6%
D	0%
F	0%
Unsure	25%

Student Achievement on State Standardized Tests Known as STAAR

A	48%
B	35%
C	6%
D	1%
F	0%
Unsure	9%

Comprehensive Fine Arts Programs

A	40%
B	44%
C	8%
D	1%
F	1%
Unsure	6%

Addressing the Concerns of Parents

A	41%
B	40%
C	14%
D	2%
F	3%
Unsure	1%

Encouraging Citizen Involvement with Schools in the Community

A	39%
B	40%
C	13%
D	2%
F	1%
Unsure	4%

Providing Parent Education Opportunities to Help Parents Work with Children on Academics

A	27%
B	38%
C	23%
D	6%
F	1%
Unsure	5%





Top row: Win Weber, Scott Bowen, Page Rander, Arturo Sanchez, Jennifer Broddle
Bottom row: Jay Cunningham, Dr. Greg Smith, Dr. Laura DuPont

WE BELIEVE... THE MEASURE OF ANY COMMUNITY IS THE SUCCESS OF ITS CHILDREN

A Message to Our Community
Dr. Laura DuPont, CCISD Board President

Welcome to the sixth edition of the Clear Creek Independent School District Community Based Accountability Report, a document that reflects the characteristics you, our taxpayers, have told us are important in determining the success of your local schools. This success is measured through a multitude of subsets from academic achievement and student participation rates in various programs to safe learning environments and strong financial management of tax dollars.

This report provides the community a transparent and comprehensive look at all areas of public education in the 13 municipalities and two counties Clear Creek ISD proudly serves. It is an annual report with trend data to ensure we are moving

our education system forward to meet the needs of a diverse learning community.

Clear Creek ISD has been actively leading the discussions locally, regionally, and across Texas on the importance of measuring student success beyond Texas' State Assessments of Academic Readiness (STAAR). Our collective efforts have led to more school districts developing their own community report as well as legislative momentum in support of unique indicators that may not necessarily apply to all 1,100 school districts in Texas.

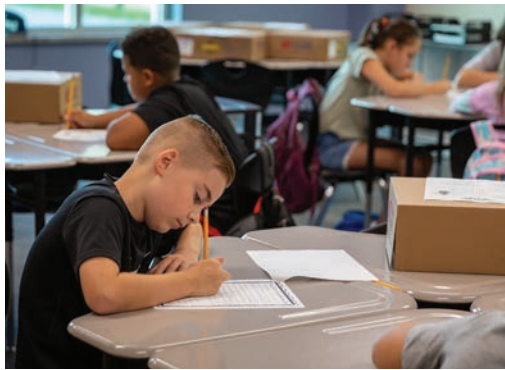
When we asked our taxpayers how they would judge the quality of their local school district, they indicated the following in order of importance.

How the District performed against these indicators are included in this 2018-2019 Community Based Accountability Report.

Quality of Teaching Staff	99%
Having High Student Achievement	97%
School Safety	96%
Helping Educate Students to Become Persons of Character	96%
Strong College Preparatory Programs	96%
Student Access to Technology	96%
Size of Classes	95%
Variety of Educational Opportunities that Meet the Needs and Interests of All Students	94%
High Scores on SAT/ACT	91%
Student Achievement on STAAR	68%

Source: 2018 Baseline and Associates





QUALITY OF TEACHING STAFF

During the 2018-2019 school year, the Clear Creek Independent School District retained 87.4% of its professional staff, which is a decline from previous years. Over the past five years, Clear Creek ISD has maintained a workforce of approximately 5,000 employees.

CCISD PROFESSIONAL STAFF RETENTION/ RESIGNATION RATES

2013/14

RETENTION	87.8%
RESIGNATION.....	12.2%

2014/15

RETENTION	88.0%
RESIGNATION.....	12.0%

2015/16

RETENTION	87.9%
RESIGNATION.....	12.1%

2016/17

RETENTION	88.3%
RESIGNATION.....	11.7%

2017/18

RETENTION	88.0%
RESIGNATION.....	12.0%

2018/19

RETENTION	87.4%
RESIGNATION.....	12.6%

PERCENTAGE OF TEACHERS BY HIGHEST DEGREE AND EXPERIENCE

EXPERIENCE	2013/14	2014/15	2015/16	2016/17	2017/18	2018/19
FIRST YEAR	5.4%	4.8%	8.9%	3.6%	5.1%	5.7%
1-5 YEARS	26.1%	24.9%	24.9%	24.8%	25.2%	24.6%
6-10 YEARS	22.1%	23.8%	23.0%	25.0%	22.5%	21.6%
11-20 YEARS	30.1%	30.8%	29.2%	30.8%	30.5%	30.8%
20+ YEARS	16.1%	15.7%	13.9%	15.8%	16.7%	17.3%
NO DEGREE	0.4%	0.4%	0.6%	0.4%	0.9%	0.7%
BACHELOR DEGREE	75.7%	75.0%	74.7%	74.8%	74.1%	74.5%
MASTER DEGREE	23.5%	24.1%	24.1%	24.2%	24.4%	24.2%
DOCTORATE	0.4%	0.5%	0.6%	0.7%	0.6%	0.6%

Source (2018-19): 2018-19 TAPR, TEA

DISTRICT AND STATE STAFF COMPARISONS

	2013/14	2014/15	2015/16	2016/17	2017/18	2018/19
TEACHERS						
DISTRICT	2,503.7 / 51.7%	2,503.6 / 51.9%	2,443.6 / 49.9%	2,466 / 50.4%	2,497.9 / 49.5%	2,531.9 / 49.2%
STATE	334,510.5 / 51.0%	342,191.8 / 50.8%	347,272.1 / 50.5%	352,746.1 / 50.0%	356,838.1 / 50.1%	358,450.1 / 49.8%
PROFESSIONAL SUPPORT						
DISTRICT	583.9 / 12.0%	603.6 / 12.5%	683.5 / 13.9%	619.3 / 12.6%	727.9 / 14.4%	724.8 / 14.1%
STATE	61,075.2 / 9.3%	65,119.0 / 9.7%	67,755.2 / 9.8%	70,392.1 / 10.0%	69,681.8 / 9.8%	72,848.5 / 10.1%
CAMPUS ADMINISTRATION						
DISTRICT	129.2 / 2.7%	132 / 2.7%	126.3 / 2.6%	127 / 2.6%	123.4 / 2.4%	126.2 / 2.5%
STATE	19,207.1 / 2.9%	19,679.9 / 2.9%	20,170.5 / 2.9%	20,492.1 / 2.9%	21,435.0 / 3.0%	21,812.7 / 3.0%
CENTRAL ADMINISTRATION						
DISTRICT	39.1 / 0.8%	38.2 / 0.8%	39.6 / 0.8%	35.6 / 0.7%	40.8 / 0.8%	44.5 / 0.9%
STATE	6,785.4 / 1.0%	6,995.1 / 1.0%	7,340.2 / 1.1%	7,613.2 / 1.1%	8,102.4 / 1.1%	8,268.8 / 1.1%
AUXILIARY STAFF						
DISTRICT	1,237.1 / 25.5%	1,234.3 / 25.6%	1,283.3 / 26.2%	1,285.2 / 26.2%	1,253.9 / 24.8%	1,316.9 / 25.6%
STATE	172,953.7 / 26.3%	311,862.3 / 46.3%	179,800.9 / 26.1%	185,820.3 / 26.4%	183,852.0 / 25.8%	183,830.1 / 25.5%

Source (2018-19): 2018-19 TAPR, TEA



ACADEMICS

The students in CCISD outperform the state and national peers on college entrance exams.

The following charts outline the District's participation rates and performance indicators of students who took Advanced Placement courses and exams; Dual Credit College Hours; Career and Technical Education (CTE) coursework; and ACT, SAT and PSAT exams.

Source (CCISD): OnPoint tabulated data from uploaded AP Student Datafiles downloaded from The College Board, 2018 and 2019

% OF AP TESTERS WHO SCORE 3 OR HIGHER

YEAR	CCISD	STATE	GLOBAL
2013/14	71%	49%	60%
2014/15	73%	52%	61%
2015/16	68%	50%	61%
2016/17	64%	46%	58%
2017/18	64%	48%	59%
2018/19	63%	49%	60%

COLLEGE HOURS EARNED / # OF STUDENTS

	13/14	14/15	15/16	16/17	17/18	18/19
COLLEGE HOURS EARNED						
1-6	244	256	298	246	223	249
7-12	666	645	698	650	603	548
13-18	112	100	88	95	54	66
19-24	72	76	68	65	66	62
25-30	36	49	23	36	43	42
31-36	12	11	0	14	9	7
37-43	1	2	0	0	0	0
TOTAL STUDENTS						
	1143	1146	1175	1106	998	974

FINE ARTS AND ATHLETICS

CCISD offers fine arts and athletics/ physical education from Kindergarten through 12th grade. As students move into high school, the opportunities grow tremendously. When asked to grade the quality of these programs, students and parents responded as follows:

FINE ARTS

STUDENTS: 77% A OR B

PARENTS: 77% A OR B

WELLNESS AND PHYSICAL EDUCATION

STUDENTS: 77% A OR B

PARENTS: 80% A OR B



SAT & ACT PERFORMANCE BY COLLEGE-BOUND SENIORS

In March 2016, the maximum score changed from 2400 to 1600.

CLASS OF	2013/14	2014/15	2015/16	2016/17	2017/18	2018/19
SAT SCORES						
DISTRICT	1574	1588	1576	1138	1148	1163
STATE	1437	1432	1410	1393	1020	1036
GLOBAL	1498	1497	1490	1060	1060	1068
ACT SCORES						
DISTRICT	23.6	24.1	23.5	23.4	23.8	24.3
STATE	20.9	20.8	20.9	20.6	20.7	20.6
NATIONAL	20.9	21.0	21.0	20.8	21.0	20.8

PSAT PERFORMANCE

PSAT SCORES	2015/16 Jr/Soph	2016/17 Jr/Soph	2017/18 Jr/Soph	2018/19 Jr/Soph
EVIDENCE-BASED READING & WRITING				
DISTRICT	588 / 484	576 / 482	590 / 485	575 / 479
STATE	484 / 452	489 / 456	484 / 453	482 / 449
GLOBAL	513 / 472	513 / 471	512 / 470	509 / 467
MATHEMATICS				
DISTRICT	588 / 482	570 / 470	580 / 476	556 / 469
STATE	487 / 456	490 / 458	479 / 450	474 / 447
GLOBAL	505 / 466	505 / 465	501 / 462	494 / 458
TOTAL SCORE				
DISTRICT	1176 / 966	1146 / 952	1170 / 960	1131 / 948
STATE	971 / 908	979 / 914	963 / 903	956 / 897
GLOBAL	1019 / 938	1018 / 936	1013 / 932	1004 / 925

GRADUATION RATES

The District's overall graduation rate exceeds region and state averages. Graduation rates are reported one year following the actual cohort graduation.

The following graduation rates reflect the percentage of students who graduated in June 2018.

	2013/14	2014/15	2015/16	2016/17	2017/18	2018/19
ALL STUDENTS						
CCISD	2,839	2,841	3,073	2,964	3,018	3,079
TEXAS	328,584	333,286	339,626	350,605	334,424	386,548
GRADUATED						
CCISD	97.0%	96.9%	97.1%	96.8%	97.1%	95.9%
TEXAS	88.0%	88.3%	89.0%	89.1%	89.7%	90.0%
CONTINUED						
CCISD	1.8%	1.7%	1.9%	2.0%	1.6%	2.3%
TEXAS	4.6%	4.3%	4.1%	4.2%	4.0%	3.8%
DROPPED OUT						
CCISD	0.9%	1.0%	0.8%	0.9%	1.2%	1.5%
TEXAS	6.6%	6.6%	6.3%	6.2%	5.9%	5.7%



POST-SECONDARY DECISIONS

The 2019 graduates voluntarily shared their individual post-secondary college/university choices.

COLLEGE	ATTENDING
San Jacinto College	627
University of Houston	187
Texas A&M University	121
University of Houston, Clear Lake	94
The University of Texas, Austin	85
Texas State University	79
Blinn College - All Campuses	58
Sam Houston State University	48
College of the Mainland	42
Texas Tech University	36
The University of Texas, San Antonio	31
The University of Texas, Dallas	28
Texas A&M University, Galveston	27
University of North Texas	25
Alvin Community College	22
Baylor University	21
Stephen F. Austin State University	18
The University of Oklahoma	14
The University of Alabama	12
Louisiana State University	12
Texas Southern University	12
University of Houston, Downtown	10
Lamar University	10
Austin Community College	9
Prairie View A&M University	9
Rice University	9
Texas A&M University, Corpus Christi	9
Houston Baptist University	8
Houston Community College System	7
University of Mary Hardin-Baylor	7
Trinity University	7
Galveston College	6
Tarleton State University	5
The University of Texas, Arlington	5
University of the Incarnate Word	5

2013/14 CTE PARTICIPATION

	CCISD TOTAL	CTE PARTICIPATION/%
9TH	3276	1617 / 49.4%
10TH	3190	2112 / 66.2%
11TH	2967	2321 / 78.2%
12TH	2795	2376 / 85.0%
TOTAL	12228	8426 / 68.9%

2014/15 CTE PARTICIPATION

	CCISD TOTAL	CTE PARTICIPATION/%
9TH	3361	1827 / 54.4%
10TH	3239	2224 / 68.7%
11TH	3083	2421 / 78.5%
12TH	2975	2553 / 85.8%
TOTAL	12658	9025 / 71.3%

2015/16 CTE PARTICIPATION

	CCISD TOTAL	CTE PARTICIPATION/%
9TH	3440	1680 / 48.8%
10TH	3226	2406 / 74.6%
11TH	3177	2609 / 82.1%
12TH	2888	2506 / 86.8%
TOTAL	12731	9201 / 72.3%

2016/17 CTE PARTICIPATION

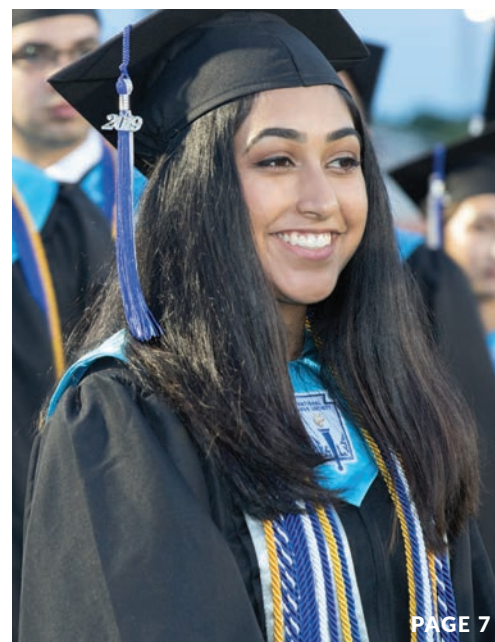
	CCISD TOTAL	CTE PARTICIPATION/%
9TH	3551	1707 / 48.1%
10TH	3274	2422 / 74.0%
11TH	3096	2555 / 82.5%
12TH	2963	2539 / 85.7%
TOTAL	12884	9223 / 71.6%

2017/18 CTE PARTICIPATION

	CCISD TOTAL	CTE PARTICIPATION/%
9TH	3581	1937/54.1%
10TH	3329	2459/73.9%
11TH	3201	2443/76.3%
12TH	2854	2177/76.3%
TOTAL	12965	9016/69.5%

2018/19 CTE PARTICIPATION

	CCISD TOTAL	CTE PARTICIPATION/%
9TH	3667	1809/49.3%
10TH	3421	2777/81.2%
11TH	3205	2784/86.9%
12TH	3112	2816/90.5%
TOTAL	13405	10186/76.0%



2019 CCISD YOUTH TRUTH SURVEY

In May 2019, the non-profit research organization Youth Truth surveyed students, staff, and families at CCISD elementary, intermediate, and high schools about their perceptions of their school based on engagement, academic rigor, relationships, belonging/peer collaboration, culture, and academic support services. Except for elementary school students who used a 3-point Likert scale, all respondents answered questions using a 5-point Likert scale. For all questions, the higher scores represented positive attitudes, and the lower numbers represented negative attitudes.

Elementary Students	%	Average Rating 1 to 3 (Low to High)	Elementary Staff	%	Average Rating 1 to 5 (Low to High)	Elementary Families	%	Average Rating 1 to 5 (Low to High)
Does your teacher want you to do your best?	95%	2.95	I feel my work contributes to the goals of my school.	92%	4.36	My school's employees are committed to the success of the school.	87%	4.25
						Teachers treat families with respect	89%	4.33
Intermediate Students	%	Average Rating 1 to 5 (Low to High)	Intermediate Staff	%	Average Rating 1 to 5 (Low to High)	Intermediate Families	%	Average Rating 1 to 5 (Low to High)
How many of your teachers believe that you can get a good grade if you try?	75%	4.13	I feel my work contributes to the goals of my school.	89%	4.21	My school's employees are committed to the success of the school.	76%	3.93
						Teachers treat families with respect	78%	3.98
High School Students	%	Average Rating 1 to 5 (Low to High)	High School Staff	%	Average Rating 1 to 5 (Low to High)	High School Families	%	Average Rating 1 to 5 (Low to High)
Many of my teachers believe I can get a good grade if I try.	78%	4.14	I feel my work contributes to the goals of my school.	90%	4.25	My school's employees are committed to the success of the school.	76%	3.93
						Teachers treat families with respect	77%	3.81

DISTRICT FINANCIAL SNAPSHOT

The Clear Creek Independent School District receives funding from multiple sources, with the primary source of revenue (nearly 70%) coming from local property values.



CCISD BUDGET:

	2017/18	2018/19
TAX RATE PER \$100 VALUATION	\$1.40	\$1.40
FUND BALANCE	\$68,910,264	\$74,709,561
TOTAL ANNUAL BUDGET	\$335,052,994	\$346,576,577
INSTRUCTIONAL BUDGET	\$210,574,628	\$217,353,855
STUDENT ENROLLMENT	42,008	42,043
AVERAGE EXPENDITURE PER STUDENT	\$7,976	\$8,243

BUDGET STATISTICS: GENERAL FUND

	2017/18	2018/19
% OF REVENUE FROM LOCAL SOURCES	67.7%	70.5%
% OF REVENUE FROM STATE SOURCES	30.7%	27.9%
% OF REVENUE FROM FEDERAL SOURCES	1.5%	1.7%
AS A PERCENT OF TOTAL EXPENDITURE BUDGET:		
SALARIES AND BENEFITS	87.5%	87.3%
INSTRUCTION AND RELATED SERVICES	66.4%	66.2%
GROUPS AND FACILITIES MAINTENANCE	8.8%	8.6%
CAMPUS ADMINISTRATION	6.3%	6.1%
STUDENT TRANSPORTATION	3.5%	3.4%
GUIDANCE AND COUNSELING SERVICES	3.5%	3.8%
EXTRACURRICULAR AND COCURRICULAR	2.2%	2.2%
DATA SERVICES	2.1%	2.1%
GENERAL ADMINISTRATION	2.1%	2.2%
SECURITY	1.1%	1.5%
HEALTH SERVICES	1.0%	1.0%
INSTRUCTIONAL ADMINISTRATION	0.9%	0.9%
OTHER	1.0%	1.1%

Source: 2018 Baseline and Associates

DISCIPLINE

Overall, CCISD's student discipline rates are less than state and regional averages.

	STATE	2013/14 REGION	CCISD	STATE	2014/15 REGION	CCISD	STATE	2015/16 REGION	CCISD
TOTAL STUDENTS	5,289,752	1,185,786	42,041	5,371,933	1,214,070	42,862	5,440,722	1,234,862	43,273
DISCIPLINE POPULATION	649,224	160,699	3,941	616,987	150,525	3,939	598,389	140,936	3,816
DISCIPLINE POPULATION %	12.3%	13.6%	9.4%	11.5%	12.4%	9.2%	11.0%	11.4%	8.8%
EXPULSIONS	3,937	855	11	3,883	812	18	3,824	784	5
EXPULSIONS %	0.076%	0.072%	0.026%	0.072%	0.067%	0.042%	0.070%	0.063%	0.012%
SUSPENSIONS (IN SCHOOL)	1,083,949	294,868	7,636	1,012,169	276,416	7,499	982,563	262,673	8,083
SUSPENSIONS (IN SCHOOL)%	20.5%	24.9%	18.2%	18.8%	22.8%	17.5%	18.1%	21.3%	18.7%
SUSPENSIONS (OUT OF SCHOOL)	439,799	133,340	1,186	417,522	119,925	1,290	408,873	112,942	1,282
SUSPENSIONS (OUT OF SCHOOL)%	8.31%	11.24%	2.82%	7.77%	9.88%	3.01%	7.52%	9.15%	2.96%
FIREARMS VIOLATIONS	152	44	0	117	25	0	138	36	0
FIREARMS VIOLATIONS %	0.003%	0.004%	0.000%	0.002%	0.002%	0.000%	0.003%	0.003%	0.000%
ALCOHOL	2,250	383	27	2,362	408	9	2,441	436	16
ALCOHOL%	0.043%	0.032%	0.064%	0.044%	0.034%	0.021%	0.045%	0.035%	0.037%
CONTROLLED SUBSTANCE	24,278	5,113	120	23,252	5,150	125	22,850	4,824	136
CONTROLLED SUBSTANCE%	0.459%	0.431%	0.285%	0.433%	0.424%	0.292%	0.420%	0.391%	0.314%

	STATE	2016/17 REGION	CCISD	STATE	2017/18 REGION	CCISD	STATE	2018/19 REGION	CCISD
TOTAL STUDENTS	5,500,606	1,250,858	43,929	5,536,631	1,250,998	44,099	5,574,620	1,244,939	44,210
DISCIPLINE POPULATION	575,031	142,115	4,187	561,084	132,355	3,851	591,447	142,670	4,263
DISCIPLINE POPULATION %	10.5%	11.4%	9.5%	10.1%	10.6%	8.7%	10.610%	11.5%	9.6%
EXPULSIONS	3,671	792	15	3,931	751	17	4,929	749	20
EXPULSIONS %	0.067%	0.063%	0.034%	0.071%	0.060%	0.039%	0.088%	0.060%	0.045%
SUSPENSIONS (IN SCHOOL)	952,505	261,046	9,005	902,313	228,380	7,557	1,128,906	281,377	9,877
SUSPENSIONS (IN SCHOOL)%	17.3%	20.9%	20.5%	16.3%	18.3%	17.1%	20.3%	22.6%	22.3%
SUSPENSIONS (OUT OF SCHOOL)	388,204	109,396	1,538	356,357	97,369	1,416	437,515	113,219	2,053
SUSPENSIONS (OUT OF SCHOOL)%	7.06%	8.75%	3.50%	6.44%	7.78%	3.21%	7.85%	9.09%	4.64%
FIREARMS VIOLATIONS	184	50	0	203	62	N/A*	222	70	N/A*
FIREARMS VIOLATIONS %	0.003%	0.004%	0.000%	0.004%	0.005%	N/A*	0.004%	0.006%	N/A*
ALCOHOL	2,818	558	44	3,276	517	23	3,165	579	27
ALCOHOL%	0.051%	0.045%	0.100%	0.059%	0.041%	0.052%	0.057%	0.047%	0.061%
CONTROLLED SUBSTANCE	22,406	4,562	142	22,596	4,888	201	25,483	5,510	129
CONTROLLED SUBSTANCE%	0.407%	0.365%	0.323%	0.408%	0.391%	0.456%	0.457%	0.443%	0.292%

Source: https://rptsr1.tea.texas.gov/adhocrpt/Disciplinary_Data_Products/Download_District_Summaries.html

*N/A indicates fewer than 5 incidents. The number is masked to comply with privacy regulations.

CLASSROOM SIZES

CCISD's average class size for each grade level is comparable to the state's average.

GRADE	2013/14 CCISD	2013/14 STATE	2014/15 CCISD	2014/15 STATE	2015/16 CCISD	2015/16 STATE	2016/17 CCISD	2016/17 STATE	2017/18 CCISD	2017/18 STATE	2018/19 CCISD	2018/19 STATE
KINDERGARTEN	20.1	19.4	20.0	19.2	20.2	18.9	20.1	18.9	19.9	18.7	19.9	18.9
GRADE 1	19.2	19.5	18.6	19.3	19.1	19.1	19.1	19.1	19.4	18.8	19.1	18.8
GRADE 2	18.4	19.3	18.5	19.3	19.3	19.1	19.3	19.1	19.6	18.8	19.1	18.7
GRADE 3	18.4	19.3	18.5	19.3	19.3	19.1	19.3	19.1	19.6	19.0	20.1	18.9
GRADE 4	18.3	19.3	18.6	19.1	19.1	19.0	19.1	19.0	19.3	19.2	20.0	19.2
GRADE 5	20.2	21.2	21.3	20.8	22.4	20.8	22.4	20.8	23.2	21.2	23.3	21.2
GRADE 6	18.4	20.6	18.3	20.3	19.0	20.4	19.0	20.4	15.6	20.3	18.1	20.4
7-12: ELA	18.4	17.4	18.8	17.2	17.8	17.1	17.8	17.1	14.4	16.7	16.6	16.6
7-12: MATHEMATICS	19.0	18.1	19.7	18.1	18.3	18.1	18.3	18.1	15.1	17.9	17.3	17.8
7-12: SCIENCE	19.9	19.1	20.2	19.1	18.9	19.1	18.9	19.1	15.8	19.0	18.3	18.9
7-12: SOCIAL STUDIES	19.8	19.6	20.1	19.6	18.9	19.5	18.9	19.5	15.6	19.3	17.6	19.3

Source: 2018-19 TAPR, TEA



CCISD DEMOGRAPHICS

YEAR	2013/14	2014/15	2015/16	2016/17	2017/18	2018/19
AFRICAN AMERICAN	8.2%	8.1%	8.1%	8.2%	8.3%	8.2%
AMERICAN INDIAN	0.2%	0.2%	0.2%	0.2%	0.2%	0.3%
ASIAN	9.8%	9.8%	9.8%	9.7%	9.7%	9.6%
HISPANIC	28.0%	28.7%	29.4%	30.6%	30.9%	31.4%
PACIFIC ISLANDER	0.1%	0.1%	0.1%	0.1%	0.2%	0.1%
TWO OR MORE RACES	3.50%	3.80%	4.30%	4.60%	4.50%	4.7%
WHITE	50.1%	49.3%	48.1%	46.7%	46.1%	45.8%
AT RISK	36.5%	37.5%	37.5%	39.7%	45.5%	40.1%
BILINGUAL/ESL EDUCATION	9.2%	9.8%	10.2%	10.6%	11.2%	12.2%
ECONOMICALLY DISADVANTAGED	27.5%	27.0%	27.6%	28.4%	29.2%	28.7%
ENGLISH LEARNER	9.2%	9.8%	10.2%	10.6%	11.2%	12.0%
GIFTED & TALENTED EDUCATION	9.0%	9.5%	9.9%	10.3%	10.6%	10.8%
SPECIAL EDUCATION	9.5%	9.6%	9.6%	9.6%	9.9%	10.4%

Source: 2018-19 TAPR

STAAR ACHIEVEMENT CCISD VS. STATE

SUBJECT	2013/14		2014/15		2015/16		2016/17		2017/18		2018/19	
	CCISD	STATE	CCISD	STATE	CCISD	STATE	CCISD	STATE	CCISD	STATE	CCISD	STATE
READING												
APPROACHES	89%	76%	88%	77%	85%	73%	83%	72%	84%	74%	83%	75%
MEETS	62%	45%	61%	46%	62%	46%	59%	44%	60%	46%	60%	48%
MASTERS	26%	15%	28%	17%	28%	17%	28%	19%	28%	19%	29%	21%
MATH												
APPROACHES	87%	78%	92%	81%	85%	76%	87%	79%	87%	81%	86%	82%
MEETS	53%	39%	67%	48%	56%	43%	58%	46%	58%	50%	59%	52%
MASTERS	25%	17%	38%	20%	28%	19%	31%	22%	30%	24%	33%	26%
WRITING												
APPROACHES	84%	72%	81%	72%	78%	69%	75%	67%	74%	66%	75%	68%
MEETS	47%	35%	45%	34%	50%	41%	43%	36%	50%	41%	46%	38%
MASTERS	12%	8%	13%	9%	19%	15%	15%	11%	17%	13%	18%	14%
SCIENCE												
APPROACHES	90%	78%	87%	78%	87%	79%	86%	79%	85%	80%	87%	81%
MEETS	63%	43%	60%	44%	61%	47%	63%	49%	62%	51%	65%	54%
MASTERS	26%	14%	27%	16%	26%	16%	29%	19%	33%	23%	33%	25%
SOCIAL STUDIES												
APPROACHES	88%	76%	85%	78%	84%	77%	85%	77%	83%	78%	87%	81%
MEETS	58%	39%	56%	44%	60%	47%	62%	49%	62%	53%	66%	55%
MASTERS	27%	15%	29%	19%	33%	22%	39%	27%	39%	31%	44%	33%

CCISD CAMPUS ENROLLMENT

Campus Name	2011/12	2015/16	2016/17	2017/18	2018/19
Clear Brook High School	2,534	2,220	2,253	2,195	2,254
Clear Creek High School	2,103	2,286	2,325	2,348	2,382
Clear Falls High School	1,735	2,578	2,591	2,666	2,768
Clear Horizons ECHS	376	453	451	442	443
Clear Lake High School	2,682	2,396	2,383	2,319	2,315
Clear Path Alternative School	50*	63	70	85	86
Clear Springs High School	2,371	2,529	2,616	2,715	2,806
Clear View High School	200	209	199	213	208
Bayside Intermediate	625	768	817	819	874
Brookside Intermediate	812	790	775	810	891
Clear Creek Intermediate	824	795	794	804	756
Clear Lake Intermediate	1,046	977	969	926	930
Creekside Intermediate	847	945	952	939	913
League City Intermediate	445	1,038	1,108	1,069	1,066
Seabrook Intermediate	1,047	1,027	1,019	1,019	958
Space Center Intermediate	1,149	975	938	978	1,030
Victory Lakes Intermediate	884	1,040	1,075	1,092	1,124
Westbrook Intermediate	1,349	1,147	1,135	1,204	1,141
Armand Bayou Elementary	487	509	520	548	571
Bauerschlag Elementary	851	930	929	938	936
Bay Elementary	729	751	739	730	711
Brookwood Elementary	537	713	741	750	755
Clear Lake City Elementary	591	583	595	584	597
Ed White Elementary	461	521	602	608	640
Falcon Pass Elementary	626	636	615	616	608
Ferguson Elementary	645	772	803	757	695
Gilmore Elementary	891	789	858	880	863
Goforth Elementary	599	757	809	889	892
Greene Elementary	760	723	751	724	673
Hall Elementary	618	891	853	861	860
Hyde Elementary	570	642	632	652	650
Landolt Elementary	857	884	867	858	850
League City Elementary	449	587	614	630	497
Mcwhirter Elementary	973	787	869	879	901
Mossman Elementary	882	917	961	963	985
North Pointe Elementary	756	770	756	745	798
Parr Elementary	753	806	850	837	836
Robinson Elementary	575	504	496	485	477
Ross Elementary	689	691	636	623	633
Stewart Elementary	631	825	852	872	806
Ward Elementary	618	584	586	579	552
Weber Elementary	902	909	925	929	933
Wedgewood Elementary	782	758	768	725	722
Whitcomb Elementary	720	750	720	702	653
Clear Creek ISD Total	39,037	41,225	41,819	42,008	42,042

Source: Campus TAPR, TEA

*Total enrollment includes enrollment at JJAEPs Studenta at Clear Path Alternative School were enrolled at their home campus during the 2011-12 school year

OUR MISSION

The mission of the Clear Creek Independent School District, the leader in visionary education, is to ensure that each student discovers and develops his or her unique talents and interests while realizing personal success and positively impacting their world through a new system distinguished by integrity, meaningful relationships, personalized learning, achievement, and a continuing commitment to Courage, Collaboration, Innovation, and Self-Direction.

CORE VALUES

Trustworthiness: Act with honesty in all that you do.

Respect: Value yourself and others.

Responsibility: Own your choices.

Fairness: Play by the rules and consider the needs of others.

Caring: Be kind to others.

Citizenship: Work to improve your school, community, and country.

OUR BELIEFS

1. People flourish only in a culture based on integrity.
2. Today's experiences are as valuable as tomorrow's opportunities.
3. One's heartfelt passion creates limitless possibilities.
4. Trust is built on what we do, not just what we say.
5. Shared responsibility is essential to community success.
6. Each person bears the responsibility to create his or her future.
7. Each person possesses unique talents and creative ability.
8. Everyone deserves to be physically and emotionally safe.
9. Relationships are critical to meaningful teaching and learning.
10. Respect for diversity strengthens community.
11. The measure of any community is the success of its children.
12. Each person deserves compassion and respect.

OBJECTIVES

- Each student sustains a fulfilled life actualizing his or her personal talents and interests.
- Each student optimizes his or her potential by continuously setting and achieving individual learning goals.
- Each student actively enriches and advances his or her community and greater society.

