



ORANGE UNIFIED SCHOOL DISTRICT

Measure S Bond Program

August 2021 Monthly Progress Report



PERIOD COVERED:

August 1-31, 2021

FISCAL YEAR

FY 2021-2022

PROGRESS REPORT NO.

PR-050-2021-050

PREPARED BY:

CUMMING
Building Value Through Expertise



TABLE OF CONTENTS

1.0 Executive Summary

1.1 Program Summary

1.2 Program Highlights/Key Milestones

1.3 Look Ahead (next 90 days)

2.0 Project Status Report

Canyon HS – Science Center

El Modena HS – Science Center

Orange HS – Utility Infrastructure (Increment # 1)

Orange HS – Science Center (Increment # 2)

Villa Park HS – Interim Housing & Science Center

3.0 Financial Report

3.1 Project Cost Estimate

- Budget vs Actuals with Vendor details per High School

3.2 Cash Flow Projections

4.0 Program Schedule Summary

4.1 Phase I Schedule Summary

4.2 Phase II Schedule Summary



1.0 EXECUTIVE SUMMARY

1.1 Program Summary

Division of State Architects (DSA) approval to establish Phase 1 design criteria completed as follows:

- (Completed) September 22, 2020 - El Modena HS Phase 1 Quad (04-119124)
- (Completed) October 24, 2019 - Villa Park HS New Parking and Drop Off (04-118521).
- (Completed) June 25, 2019 - Orange HS Custom Tensile Fabric Shade Structures (04-118351)
- (Completed) May 2, 2019 - Canyon HS Interim Modular Kitchen (04-118418)
- (Completed) January 31, 2019 - Canyon HS Science Center (04-117300)
- (Completed) November 6, 2018 - El Modena HS Science Center (04-117098)
- (Completed) August 16, 2018 - Villa Park HS Science Center (04-117022)
- (Completed) July 12, 2018 - Orange HS Science Center (Increment # 2) (04-116859)
- (Completed) April 10, 2018 - Orange HS Increment # 1 (Satellite Kitchen) (04-116673.2)
- (Completed) March 1, 2018 - Orange HS Increment #1 (Infrastructure Upgrades, Move Relocatable Buildings, Bus Drop-Off, Restroom Renovation Project) (04-116673.1)
- (Completed) February 7, 2018 - Villa Park HS Interim Housing (DSA Application #04-116788)

Phase 1 construction started / completed, as follows:

- (Construction Start - June 15, 2018 – Orange HS Site Infrastructure (Increment #1)
 - **Completed** September 4, 2019 – Orange HS Site Infrastructure (Increment #1) (04-116673.1)
- (Construction Start) January 7, 2019 – Villa Park HS (Interim Housing and Science Center)
 - **Completed** April 26, 2019 – Install ten (10) Portable Modular Buildings (04-116788)
 - **Completed** October 9, 2020 – Parking Lot Drop-Off (04-118521)
- (Construction Start) February 18, 2019 – Orange HS Science Center (Increment #2)
 - **Completed** April 8, 2020 – Custom Tensile Fabric Shade Structure (04-118351)
 - **Completed August 11, 2021** – Orange HS Science Center (04-116859)
- (Construction Start) April 2, 2019 – El Modena HS Science Center
- (Construction Start) June 12, 2019 – Canyon HS Interim Housing & Science Center
 - **Completed** August 7, 2020 – Interim Modular Kitchen (04-118418)

Division of State Architects (DSA) submission to establish Phase 2 design criteria as follows:

- (**Submitted**) March 3, 2021 – Villa Park HS Phase 2 (04-119694)
- (**Submitted**) April 23, 2021 – El Modena HS Phase 2 (04-120032)
- (**Submitted**) May 26, 2021 – Orange HS Phase 2 (04-120151)
- (**Submitted**) **August 17, 2021** – Canyon HS Phase 2 (04-120410)

1.2 Program Highlights/Key Milestones



California Environmental Quality Act (CEQA) Compliance Achieved on Phase 1 (as required by law):

- Villa Park HS Science Center – Notice of Exemption (Board approved on 9/20/18).
- Canyon HS Science Center – Notice of Exemption (Board approved on 7/26/18).
- Orange HS Science Center – Notice of Exemption (Board approved on 3/8/18).
- El Modena HS Science Center – Notice of Exemption (Board approved on 3/8/18).

California Environmental Quality Act (CEQA) Compliance PENDING on Phase 2 (as required by law):

- Canyon HS Phase 2 – [Pending CEQA review](#)
- El Modena HS Phase 2 – [Pending CEQA review](#)
- Orange HS Phase 2 – [Pending CEQA review](#)
- Villa Park HS Phase 2 – [Pending CEQA review](#)

Phase 2 Measure S Bond Project Development Update:

- On 8/17/2021, CannonDesign submitted design package for application 04-120410, and it was accepted by DSA. Started review by DSA plan check.
- As of 8/19/21, the Board approved the CEQA proposal for Environmental Audit, Inc. for the four (4) Phase II high school projects. We are moving forward to establish the high school campus reviews needed for CEQA compliance.
- As of 8/31/21, at Villa Park HS - Phase 2 (04-119694), submitted for DSA Plan Review on March 3, 2021. DSA review continues.
- As of 8/31/21, at El Modena HS - Phase 2 (04-120032), submitted for DSA Plan Review on April 23, 2021. DSA review continues. Discussions with DSA regarding a structural wall anchorage upgrade will be added to this project design
- As of 8/31/21, at Orange HS - Phase 2 (04-120151), submitted for DSA Plan Review on May 26, 2021. DSA review continues.

Program Wide Cash Flow Projection / Bond Issuance

- As of 8/31/21, we are preparing to revise the last cash flow assessment in March 2021, which the current projections of the Phase II projects are based on.
- New analysis data on the slow spending in the Phase I program and current market conditions due to the COVID-19 pandemic, it appears that selling Bonds before May 2022 needs to be re-analyzed.

Project Achievements:

- On 8/11/2021, DSA issued a [Certification of Compliance for Orange HS Science Center Project \(04-116859\)](#), new 2-story building and Site Improvements (including Trash Enclosure), thereby completing this project.



- Submitted the DSA-168 for the final costs at the Villa Park HS Parking Drop-Off Project (04-118521), including the balance of outstanding change orders. Awaiting the final review from DSA.
- As of 08/09/21, a letter was sent to the escrow agent representing Manufacturers Bank, representing the [Orange HS Science Center project executed Notice of Completion and request to release contract retainage](#) pursuant to Public Contract code, on August 30, 2021
- As of 08/31/21, processing [payment application # 26](#) (June), for ACI (EMHS) reflecting [75%](#) paid overall completion, reflecting [389 calendar days](#) elapsed.
- As of 08/31/21, processing [payment application # 29](#) (July), for ACI (VPHS) reflecting [76%](#) paid overall completion, reflecting [525 calendar days](#) elapsed.
- As of 08/31/21, processing [payment application # 26](#) (July), for Swinerton (CHS) reflecting [68%](#) paid overall completion, reflecting [760 calendar days](#) elapsed.

1.3 Look Ahead (next 90 days)

Board of Education Agenda

September 9th

1. Recommend Board approval of Change Order # 06 for Angeles Contractor, Inc. at Villa Park HS IH & Science Center project in the amount of; Change Order No. 06: \$55,428.57 – 0 Calendar Days Additional Contract Time; Description: General Contractor costs based on Nine (9) PCO's: Four (4) Owner Requested and Five (5) Design Related changes.
2. Recommend Board approval of Change Order # 15 for Swinerton at Canyon HS in the amount of; Change Order No. 15: \$76,092.86 – 0 Calendar Days Additional Contract Time; Description: General Contractor costs based on Thirteen (13) PCO's: Eight (8) Unforeseen Conditions, Three (3) Owner Requested and Two (2) Design Related changes.
3. Recommend Board approval to extend the Measure S – Division of State Architect Construction Material Testing and Special Inspection Service Contract in order to comply with Division of State Architect (DSA) requirements for a construction materials testing and special inspections consultant firm on all school construction projects, using the original Request for Qualifications and Proposals (RFQP) No. 171018-02, with the list of certified inspectors that has been established and working on each of the measure S project sites. The projected expenditures originally reflect an estimate 2%, or \$2,700,000 to cover the Phase 1 measure s projects. Increase the agreement with Ninyo & Moore for the amount \$240,275.00 (which includes a contingency of \$86,358), as outlined in Ninyo & Moore proposal dated July 27, 2021, for the additional construction materials testing and special inspections needed reflecting the extended substantial completion date of January 31,



2022. The revised cumulative of the Agreement, inclusive of all Amendments, shall increase from a not-to-exceed of \$939,065.00 to a not-to-exceed of \$1,179,340.00, inclusive of all District approved reimbursements and contingency. (see the 1/18/2018 Board approved items attached)

4. Recommend Board approval of Change Order # 6 for Angeles at El Modena HS in the amount of; Change Order No. 6: \$107,243.56 – 0 Calendar Days Additional Contract Time; Description: General Contractor costs based on Fifteen (15) PCO's: Three (3) Unforeseen Conditions, Three (3) Owner Requested and Nine (9) Design Related changes.
5. Recommend Board approval of the strongly DSA recommended structural retrofit design to strengthen the roofs at the existing administration building and the two-story classroom buildings 200, 300, 400, and 500 (Wall Anchorage Upgrade - Structural Retrofitting), Design Service Request # 2 proposal received from Harley Ellis Devereaux (HED), for the El Modena HS (Phase 2) project, in the amount of: \$53,660. On July 25, 2019, Harley Ellis Devereaux (HED) was Board authorized to provide design and construction drawings for Measure S Phase II construction projects at El Modena High School. District staff and Cumming Program Management have reviewed the proposal and agree that the fees are aligned with industry standards for these specialized consulting categories.
6. Recommend Board approval of low bid award to general contractor New Dimension for the Swing space retrofit of Building 300 for the Orange HS – Phase 2 project in the amount of; \$99,450.00

Program Wide

- Orange HS Science Center – completing final punch list items on the Science Center, any item remaining will be placed on the Warranty list. Recorded with the County of Orange, now awaiting the final release of retention.
- Orange HS Science Center – DSA -168 final cost was submitted for the new Science Center building, and a check request was prepared for submission. Once received, expecting a DSA Certificate of Completion.
- Orange HS Science Center – Move Manager focusing on post-move on-site assistance for teachers. Removal of post-relocation surplus items as approved by the principal and readiness of relocated classrooms for new occupants or demolition in preparation for the Phase 2 project.
- Orange HS Phase II – Lionakis (Architect of Record) responding to any DSA comments during plan review.
- El Modena HS Science Center – Continue the final stages of completing the NNC items concerning the structural steel welding, pouring slabs, setting steel for the roof decks, interior framing, drywall and interior utility line runs.
- El Modena HS Science Center – ACI (general contractor) submitted a Recovery Schedule, reflecting a substantial completion date s of: 12/02/2021. Project team is reviewing the



remaining critical path work, Fragnets, successor and predecessor task linkages for conflicts, for possible approved of this schedule.

- El Modena HS Phase II – HED (Architect of Record) responding to any DSA comments during plan review.
- El Modena HS Phase II – Move Manager received moving boxes and supplies which were delivered to teacher classrooms that will be relocating to the new Science center building. Work with the furniture vendor on the storage proposal and partial invoicing of the product due to the delay in the construction schedule.
- Villa Park HS Interim Housing & Science Center – Moving forward with all exterior and interior framing and work to make the building weather tight, drywall, and interior wiring and utility line runs, ceiling grids and all rough finish work.
- Villa Park HS Interim Housing & Science Center – Completing final punch list items and asphalt issues to complete the Parking and Drop Off zone (04-118521) work. DSA approved the Path-of-Travel (POT) construction change directive. Issue this change to ACI (general contractor) for this construction. Upload all DSA final documents.
- Villa Park HS Science Center – Requesting a recovery schedule for the ACI (general contractor) on the un-approved substantial completion date which currently reflects 12/12/2021, that has been reflected in their last schedule update and topic of weekly discussion in meetings.
- Villa Park HS Phase II – LPA (Architect of Record) responding to any DSA comments during plan review.
- Villa Park HS Phase II – Move Manager continues preparation for relocations (teacher meetings, rooms/items relocating review, moving supplies orders/delivery, hazmat, and surplus items removal), new furniture delivery, and assistance in OFCI delivery.
- Canyon HS Science Center – Continue interior and exterior framing, drywall to make building weather tight, interior electrical and utility line runs, as well as completing the MPR area along with the ramps and sidewalks needed.
- Canyon HS Phase II –Cannon Design (Architect of Record) moving forward to final design for the Phase II project. DSA page-turn meeting was held on 7/23/2021, with all teams to review the Phase II scope of work prior to final DSA submission. CannonDesign moving forward to finalize application 04-120410, to meet at DSA filing date of 8/17/2021
- Canyon HS Phase II – Prepare to review the Phase II 100% construction cost estimates from the Construction Manager for adherence to budget. Revise the design to conform to budget, if necessary.



- Canyon HS Phase II – Move Manager continues with site visit and review of classrooms relocating into the new Science Building for preparation and planning. Continue the Furniture and Equipment selection and obtain proposals for the Phase 1 project.



2.0 PROJECT STATUS REPORT



Canyon High School
New STEM Building

CANYON HIGH SCHOOL
New STEM Building



EL MODENA SCIENCE CENTER
03.18.2017

Overall View

HED



Orange High School Science Center



ST VILLA PARK HIGH SCHOOL

LPA



CANYON HIGH SCHOOL

CANYON HS SCIENCE CENTER

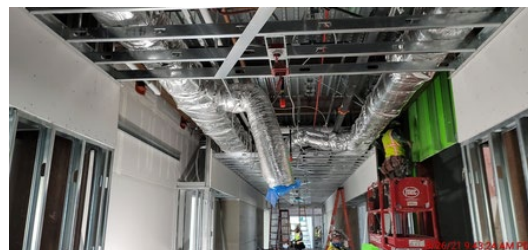
- ✓ 12 Laboratory Rooms
- ✓ 12 General Classrooms
- ✓ Student Services
- ✓ New Food Services

- ✓ New Multi-Purpose Room Entry
- ✓ Parking Lot Improvements
- ✓ Infrastructure Upgrade and Improvements
- ✓ Landscape Improvements

Project Update ([Construction](#)):

- As of 08/31/21, Swinerton continuing with internal utility and wire runs, 2nd floor run penetrations, sidewalk pours, site excavation, roofing deck and penetrations, grading, parking lot paving, and fencing trenching within the new science center building footprint, also completing the MPR exterior finishes on store front, sidewalks and landscape for turn-over to the District.
- As of 08/31/21, Move Manger meet and presented to the Canyon HS leadership and staff the new building's occupancy plan. Confirm the classroom furniture proposals and send the updates to the furniture vendor for tentative delivery/installation dates. Start communication with the (24) teachers and set meetings in their classrooms.
- As of 08/31/21, processing payment application # 26 (July) reflecting **68%** paid overall completion, reflecting **760 calendar days** elapsed.

[See Construction Photo's below:](#)



Left to right: interior hallway cement board, exterior fascia board and windows in place with scaffolding in place around building, formed courtyard prep for concrete pour, corridor ceiling grid with duct, wire and conduit runs, MPR canopy and new entrance to building.



EL MODENA HS SCIENCE CENTER

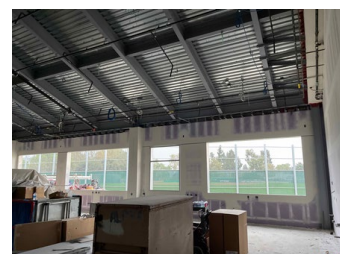
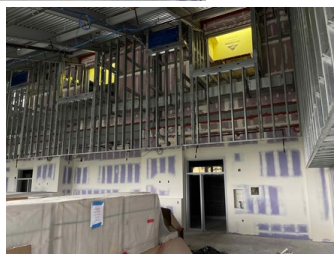
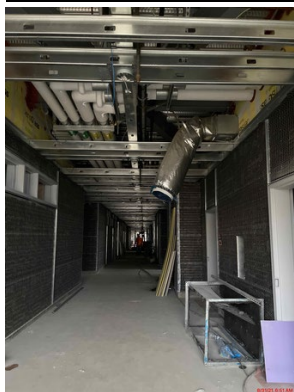
- ✓ 12 Laboratory Rooms
- ✓ 1 General Classrooms
- ✓ 2 Medically Fragile Classrooms

- ✓ Relocation of Campus MDF
- ✓ Technology & Utility Upgrade
- ✓ Landscape Improvements

Project Update (Construction):

- As of 08/31/21, Angeles is correcting all deviation issues, prioritizing the Stop issues, correction of continuity and cap plates, reducing the number of NNC issues, completing, duct penetrations in roof, interior utility line runs, interior framing, stairs, HVAC ductwork, taping and drywall, focusing on the building being weather-tight.
- As of 08/19/21, Board approved a contract Amendment # 8 to HED Architects to provide extension of construction administration services from March 20, 2021 to December 15, 2021, needed at El Modena HS Science Center project, in the amount of \$279,270 (which includes \$9,090 in reimbursable expense).
- On 08/20/21, The ACI submitted June Recovery Schedule was rejected, however, the milestone substantial completion date of December 3, 2021, and the contract completion date of January 4, 2022, must be met, without slippage. OUSD will be adopting these two critical milestone dates in anticipation of functionally opening the new Science Building for staff and students.
- As of 08/31/21, Move Manger received moving boxes and supplies which were delivered to teacher classrooms that will be relocating to the new Science center building. Work with the furniture vendor on the storage proposal and partial invoicing of the product due to the delay in the construction schedule.
- As of 08/31/21, processing payment application # 26 (June) reflecting 75% paid overall completion, reflecting 389 calendar days elapsed.

See Construction Photo's below:



Left to right: Interior wall board cover pipe, conduit and wire run, interior gypsum board mud and tape, piping, and wire pulls, interior ceiling middle entrance and exterior fascia board and framing for windows, concrete layout prep next to baseball field.



Orange High School

"ONCE A PANTHER, ALWAYS A PANTHER"



ORANGE HS SCIENCE CENTER

- ✓ 12 Laboratory Rooms
- ✓ 1 General Classrooms

- ✓ New Panther Pavilion Plaza
- ✓ 2 Medically Fragile Classrooms

Project Update Increment # 2 – Science Center (Completion):

- As of 08/31/21, Pinner completing all warranty work on the interior and exterior of the STEM building, establish the warranty exceptions list with cost.
- On 08/11/21, DSA issued a [Certification of Compliance for 04-116859 for Science Building \(2-story\) and Site Improvements \(including Trash Enclosure\)](#), thereby, completing this project.
- As of 08/09/21, a letter was sent to the escrow agent representing Manufacturers Bank, representing the projects executed Notice of Completion and request to release contract retainage pursuant to Public Contract code, on August 30, 2021.
- As of 08/24/21, a letter was sent to the escrow agent representing Manufacturers Bank, regarding a Stop Notice received against Pinner and withhold of retention funds required in the amount of \$251,952.98.
- As of 08/31/21, processing payment application # 26 RETENTION (May-July), reflecting [100%](#) release of retention place in Measure S files for record purposes.

[See Completion Photo's below:](#)



Orange HS – Science Center STEM Building
(Dusk with lights)



VILLA PARK HIGH SCHOOL

SCHOOL OF EXCELLENCE



VILLA PARK HS SCIENCE CENTER

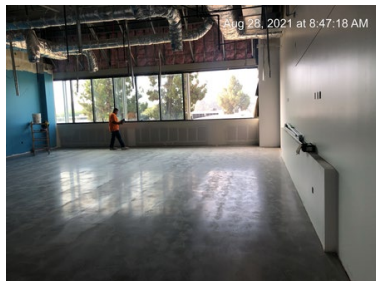
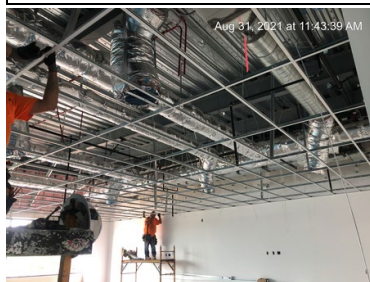
- ✓ 12 Laboratory Rooms
- ✓ 2 General Classrooms
- ✓ 2 Medically Fragile Classrooms

- ✓ Demolish existing building 300
- ✓ Install 10 New Portable Buildings

Project Update (**Construction**):

- As of 08/31/21, Angeles completing roofing penetrations, interior utility line runs, interior framing, starting exterior facia, HVAC ductwork runs, drop ceiling, insulation, exterior masonry wall, interior drywall with mud and taping, focusing on the building being weather-tight as well as completing the punch list work for the parking drop off entrance.
- As of 08/19/21, CM review of the general contractor's July schedule update, reflecting an unapproved substantial completion date of December 16, 2021, which continues to deteriorate and fluctuate each month.
- As of 08/31/21, DSA is reviewing the final costs, including the balance of outstanding change orders, for close out on the Parking Drop-Off project (04-118521).
- As of 08/31/21, Move Manger received moving boxes and supplies which were delivered to teacher classrooms that will be relocating to the new Science center building. Work with the furniture vendor on the storage proposal and partial invoicing of the product due to the delay in the construction schedule.
- As of 08/31/21, processing payment application # 29 (July) reflecting **76%** paid overall completion, reflecting **525 calendar days** elapsed.

See Construction Photo's below:



Left to right: Interior overhead duct, conduit and wire runs with ceiling grid, elevator work on-site, exterior windows (South side), interior classroom finish floor and walls, stair seating wall formed, 2nd floor rails in place.



3.0 FINANCIAL REPORT

Measure S Bond Program

Financial Report for August 2021

3.1 Project Cost Estimate

QSS Data thru 8/31/2021

	Budget	Contracted to Date	Expended to Date	Quarterly Expense Jul '21 - Sep '21	% Expended
PROGRAM					
Phase 1 - HS Science Center	\$204,646,115	\$161,262,003	\$128,251,620	\$8,234,100	62.67%
Phase 2	\$86,957,789	\$8,507,150	\$5,230,286	\$384,878	6.01%
TOTAL	\$291,603,903	\$169,769,152	\$133,481,905	\$8,618,979	45.78%
Canyon High School					
Phase 1 - HS Science Center	\$68,613,051	\$51,153,844	\$34,956,475	\$3,061,984	50.95%
Phase 2	\$4,653,230	\$1,144,036	\$659,402	\$125,794	14.17%
TOTAL	\$73,266,281	\$52,297,881	\$35,615,877	\$3,187,778	48.61%
El Modena High School					
Phase 1 - HS Science Center	\$40,031,702	\$34,500,307	\$26,668,735	\$2,450,961	66.62%
Phase 2	\$32,741,295	\$2,621,367	\$1,773,956	\$61,207	5.42%
TOTAL	\$72,772,997	\$37,121,674	\$28,442,691	\$2,512,168	39.08%
Orange High School					
Phase 1 - HS Science Center	\$51,648,075	\$42,356,235	\$42,070,595	\$197,741	81.46%
Phase 2	\$21,217,888	\$2,215,861	\$1,323,581	\$94,477	6.24%
TOTAL	\$72,865,963	\$44,572,096	\$43,394,176	\$292,219	59.55%
Villa Park High School					
Phase 1 - HS Science Center	\$44,353,287	\$33,251,616	\$24,555,815	\$2,523,414	55.36%
Phase 2	\$28,345,375	\$2,525,886	\$1,473,346	\$103,400	5.20%
TOTAL	\$72,698,662	\$35,777,501	\$26,029,161	\$2,626,814	35.80%



Measure S Bond Program

Financial Report for August 2021

Budget vs Actuals - By School and Budget Category with Vendor Detail

QSS Data thru 8/31/2021

	Budget	Contracted to Date	Expended to Date	Quarterly Expense Jul '21 - Sep '21	% Expended
Canyon High School					
390-9520 Canyon HS Science Center (DSA 04-117300)					
1. Design Cost					
1.01 Architect					
UNCOMMITTED	\$13,600	\$0	\$0	\$0	
GKKWORKS CANNON DESIGN	\$3,122,050	\$3,122,050	\$3,000,172	\$22,961	96.10%
LIONAKIS	\$14,058	\$14,058	\$14,058	\$0	100.00%
	\$3,149,708	\$3,136,108	\$3,014,230	\$22,961	95.70%
2. Construction Cost					
2.01 Construction					
UNCOMMITTED	\$3	\$0	\$0	\$0	
SWINERTON BUILDERS	\$39,506,003	\$39,506,003	\$25,202,628	\$2,729,071	63.79%
	\$39,506,006	\$39,506,003	\$25,202,628	\$2,729,071	63.79%
2.02 OFCI and Other Construction					
UNCOMMITTED	\$352,128	\$0	\$0	\$0	
ACCO ENGINEERED SYSTEMS INC	\$236,785	\$236,785	\$236,785	\$0	100.00%
AMERICAN REPROGRAPHICS CO LLC	\$1,026	\$1,026	\$0	\$0	0.00%
CITY OF ANAHEIM - ELECTRICAL ENGINEERING DIV	\$91,340	\$91,340	\$91,340	\$0	100.00%
DEVELOPMENT GROUP INC	\$90,440	\$90,440	\$50,327	\$50,327	55.65%
INTER-PACIFIC INC	\$12,869	\$12,869	\$12,869	\$12,869	100.00%
VWR INTERNATIONAL LLC	\$16,691	\$16,691	\$0	\$0	0.00%
WW GRAINGER INC	\$1,039	\$1,039	\$1,039	\$0	100.00%
	\$802,317	\$450,189	\$392,359	\$63,196	48.90%
3. Program and Construction Management					
3.01 Program Management Fees					
UNCOMMITTED	\$1,074,954	\$0	\$0	\$0	
CUMMING CONSTRUCTION MGMT INC	\$1,126,003	\$2,179,717	\$1,092,863	\$37,340	97.06%
	\$2,200,957	\$2,179,717	\$1,092,863	\$37,340	49.65%
3.02 Construction Management Fees					
UNCOMMITTED	\$534,766	\$0	\$0	\$0	
CORDOBA CORPORATION	\$87,508	\$87,508	\$87,479	\$0	99.97%
GAFCON INC	\$2,258,845	\$2,431,047	\$2,254,922	\$129,962	99.83%
	\$2,881,119	\$2,518,555	\$2,342,401	\$129,962	81.30%
4. Construction Support Costs					
4.01 Rental					
UNCOMMITTED	\$1	\$0	\$0	\$0	
	\$1	\$0	\$0	\$0	0.00%



Measure S Bond Program
Financial Report for August 2021
Budget vs Actuals - By School and Budget Category with Vendor Detail

QSS Data thru 8/31/2021

	Budget	Contracted to Date	Expended to Date	Quarterly Expense Jul '21 - Sep '21	% Expended
4.02 Title, Environmental, Stormwater Management					
UNCOMMITTED	\$56,555	\$0	\$0	\$0	
CHICAGO TITLE COMPANY	\$750	\$750	\$750	\$0	100.00%
CITY OF ANAHEIM	\$2,524	\$2,524	\$2,524	\$0	100.00%
CITY OF ANAHEIM - WATER	\$3,082	\$3,082	\$3,082	\$0	100.00%
COUNTY OF ORANGE - ENVIRONMENTAL HEALTH	\$1,615	\$1,615	\$1,615	\$0	100.00%
ENVIRONMENTAL AUDIT INC	\$50,800	\$50,800	\$21,375	\$0	42.08%
OUSD COST OF INTEREST DISTRIBUTION	\$1	\$1	\$1	\$0	100.00%
	\$115,327	\$58,771	\$29,346	\$0	25.45%
4.03 Commissioning					
UNCOMMITTED	\$23,241	\$0	\$0	\$0	
P2S ENGINEERING INC	\$49,202	\$49,202	\$39,865	\$1,470	81.02%
	\$72,443	\$49,202	\$39,865	\$1,470	55.03%
4.04 Builders Risk Insurance					
UNCOMMITTED	\$0	\$0	\$0	\$0	
	\$0	\$0	\$0	\$0	
4.05 DSA Review Fees					
UNCOMMITTED	\$76,626	\$0	\$0	\$0	
DIVISION OF STATE ARCHITECT	\$504,370	\$504,370	\$504,370	\$0	100.00%
	\$580,996	\$504,370	\$504,370	\$0	86.81%
4.06 Postage, Printing & Advertising					
UNCOMMITTED	\$59,535	\$0	\$0	\$0	
AMERICAN REPROGRAPHICS CO LLC	\$13,857	\$13,857	\$10,950	\$0	79.02%
SOUTHERN CALIFORNIA NEWS GROUP	\$2,605	\$2,605	\$2,605	\$0	100.00%
	\$75,997	\$16,462	\$13,555	\$0	17.84%
4.07 DSA Inspection (IOR)					
UNCOMMITTED	\$139,851	\$0	\$0	\$0	
KNOWLAND CONSTRUCTION SERVICES	\$454,016	\$454,016	\$300,696	\$29,568	66.23%
	\$593,867	\$454,016	\$300,696	\$29,568	50.63%
4.08 DSA Construction Phase Testing (LOR)					
UNCOMMITTED	\$90,876	\$0	\$0	\$0	
AMERICAN ENGINEERING LABORATORIES INC	\$556,995	\$556,995	\$450,284	\$8,800	80.84%
	\$647,871	\$556,995	\$450,284	\$8,800	69.50%
4.09 Relocation					
UNCOMMITTED	\$23,140	\$0	\$0	\$0	
ULINE INC	\$1,860	\$1,860	\$0	\$0	0.00%
	\$25,000	\$1,860	\$0	\$0	0.00%
4.10 Labor Compliance					
UNCOMMITTED	\$47,498	\$0	\$0	\$0	
	\$47,498	\$0	\$0	\$0	0.00%
4.11 Preliminary Testing (Hazmat, Topo, Geo, etc)					



Measure S Bond Program
Financial Report for August 2021
Budget vs Actuals - By School and Budget Category with Vendor Detail

QSS Data thru 8/31/2021

	Budget	Contracted to Date	Expended to Date	Quarterly Expense Jul '21 - Sep '21	% Expended
UNCOMMITTED	\$229,637	\$0	\$0	\$0	
C BELOW SUBSURFACE IMAGING (Subsurface Investigation)	\$8,445	\$8,445	\$8,445	\$0	100.00%
CALIFORNIA GEOLOGICAL SURVEY (Geology and Seismology Review)	\$3,600	\$3,600	\$3,600	\$0	100.00%
ENVIRONMENTAL NETWORK CORPORATION	\$20,210	\$20,210	\$20,193	\$0	99.91%
HARRINGTON GEOTECHNICAL ENGINEERING INC (Geotechnical Soils Investigation)	\$13,500	\$13,500	\$13,500	\$0	100.00%
PROVENCER, GEORGE (dba PROVO ENGINEERING)	\$720	\$720	\$720	\$0	100.00%
RMA GROUP (dba SITESCAN)	\$26,103	\$26,103	\$26,103	\$0	100.00%
XICOTENCATL ENRIQUE SALAZAR (Topographical Survey)	\$20,100	\$20,100	\$20,100	\$0	100.00%
	\$322,315	\$92,678	\$92,660	\$0	28.75%
4.12 Utility Connection Fees (Local Permits)					
UNCOMMITTED	\$173,033	\$0	\$0	\$0	
AT&T	\$5,302	\$5,302	\$5,302	\$0	100.00%
CITY OF ANAHEIM - ELECTRICAL ENGINEERING DIV	\$2,756	\$2,756	\$2,756	\$0	100.00%
CROWN CASTLE INTERNATIONAL	\$6,455	\$6,455	\$6,455	\$0	100.00%
SOUTHERN CALIFORNIA GAS CO	\$2,445	\$2,445	\$2,445	\$0	100.00%
	\$189,991	\$16,958	\$16,958	\$0	8.93%
4.13 FF&E (Laboratory Tables and Chairs, other)					
UNCOMMITTED	\$888,587	\$0	\$0	\$0	
VWR INTERNATIONAL LLC	\$9,486	\$9,486	\$9,486	\$9,486	100.00%
	\$898,073	\$9,486	\$9,486	\$9,486	1.06%
4.14 Legal Counsel					
UNCOMMITTED	\$94,996	\$0	\$0	\$0	
	\$94,996	\$0	\$0	\$0	0.00%
5. Contingency					
5.01 Construction Contingency					
UNCOMMITTED	\$1,680,437	\$0	\$0	\$0	
	\$1,680,437	\$0	\$0	\$0	0.00%
5.02 Project Contingency					
UNCOMMITTED	\$12,422,149	\$0	\$0	\$0	
	\$12,422,149	\$0	\$0	\$0	0.00%
Total 390-9520 Canyon HS Science Center (DSA 04-117300)	\$66,307,067	\$49,551,371	\$33,501,700	\$3,031,853	50.53%
390-9520 Canyon HS Unallocated Funds F21					
4. Construction Support Costs					
4.15 Miscellaneous Fees					
UNCOMMITTED	\$0	\$0	\$0	\$0	
OUSD COST OF INTEREST DISTRIBUTION	\$36,936	\$36,936	\$36,936	\$0	100.00%
	\$36,936	\$36,936	\$36,936	\$0	100.00%



Measure S Bond Program

Financial Report for August 2021

Budget vs Actuals - By School and Budget Category with Vendor Detail

QSS Data thru 8/31/2021

	Budget	Contracted to Date	Expended to Date	Quarterly Expense Jul '21 - Sep '21	% Expended
5. Program Reserve					
5.03 Interest Earned - Reserve					
UNCOMMITTED	\$1,229,345	\$0	\$0	\$0	
	\$1,229,345	\$0	\$0	\$0	0.00%
Total 390-9520 Canyon HS Unallocated Funds F21	\$1,266,281	\$36,936	\$36,936	\$0	2.92%
390-0000 Canyon HS IP Surveillance Camera and Systems					
4. Construction Support Costs					
4.13 FF&E (Laboratory Tables and Chairs, other)					
UNCOMMITTED	\$0	\$0	\$0	\$0	
CDW GOVERNMENT INC (Parts for IP Camera Systems)	\$29,337	\$29,337	\$29,337	\$0	100.00%
DIGITAL NETWORKS GROUP INC (F/I IP Camera Software)	\$7,093	\$7,093	\$7,093	\$0	100.00%
INTER-PACIFIC INC	\$18,163	\$18,163	\$18,163	\$0	100.00%
	\$54,593	\$54,593	\$54,593	\$0	100.00%
Total 390-0000 Canyon HS IP Surveillance Camera and Systems	\$54,593	\$54,593	\$54,593	\$0	100.00%
390-9520 Canyon HS Interim Kitchen (DSA 04-118418)					
1. Design Cost					
1.01 Architect					
UNCOMMITTED	\$0	\$0	\$0	\$0	
GKKWORKS CANNON DESIGN	\$119,620	\$119,620	\$11,475	\$0	9.59%
	\$119,620	\$119,620	\$11,475	\$0	9.59%
2. Construction Cost					
2.01 Construction					
UNCOMMITTED	\$0	\$0	\$0	\$0	
SWINERTON BUILDERS	\$1,053,557	\$1,053,557	\$1,048,571	\$0	99.53%
	\$1,053,557	\$1,053,557	\$1,048,571	\$0	99.53%
2.02 OFCI and Other Construction					
UNCOMMITTED	\$10	\$0	\$0	\$0	
E.R.E.S. ENTERPRISES INC DBA ECONOMY RESTAURANT EQUIP	\$49,721	\$49,721	\$49,721	\$0	100.00%
THE DICKLER CORPORATION DBA CHEFS TOYS	\$109,449	\$109,449	\$109,449	\$0	100.00%
	\$159,180	\$159,170	\$159,170	\$0	99.99%
4. Construction Support Costs					
4.01 Rental					
UNCOMMITTED	\$0	\$0	\$0	\$0	
ELITE MODULAR LEASING & SALES INC	\$161,864	\$161,864	\$144,929	\$30,131	89.54%



Measure S Bond Program
Financial Report for August 2021
Budget vs Actuals - By School and Budget Category with Vendor Detail

QSS Data thru 8/31/2021

	Budget	Contracted to Date	Expended to Date	Quarterly Expense Jul '21 - Sep '21	% Expended
4.05 DSA Review Fees	\$161,864	\$161,864	\$144,929	\$30,131	89.54%
UNCOMMITTED	\$0	\$0	\$0	\$0	
DIVISION OF STATE ARCHITECT	\$15,812	\$15,812	\$15,812	\$0	100.00%
	\$15,812	\$15,812	\$15,812	\$0	100.00%
4.07 DSA Inspection (IOR)					
UNCOMMITTED	\$0	\$0	\$0	\$0	
KNOWLAND CONSTRUCTION SERVICES	\$71,104	\$71,104	\$61,688	\$0	86.76%
	\$71,104	\$71,104	\$61,688	\$0	86.76%
4.08 DSA Construction Phase Testing (LOR)					
UNCOMMITTED	\$0	\$0	\$0	\$0	
AMERICAN ENGINEERING LABORATORIES INC	\$17,100	\$17,100	\$9,219	\$0	53.91%
	\$17,100	\$17,100	\$9,219	\$0	53.91%
4.11 Preliminary Testing (Hazmat, Topo, Geo, etc)					
UNCOMMITTED	\$0	\$0	\$0	\$0	
ENVIRONMENTAL NETWORK CORPORATION	\$4,245	\$4,245	\$3,910	\$0	92.10%
	\$4,245	\$4,245	\$3,910	\$0	92.10%
Total 390-9520 Canyon HS Interim Kitchen (DSA 04-118418)	\$1,602,483	\$1,602,473	\$1,454,775	\$30,131	90.78%
390-9520 Canyon HS Phase II Planning and Design					
1. Design Cost					
1.01 Architect					
UNCOMMITTED	\$0	\$0	\$0	\$0	
GKKWORKS CANNON DESIGN	\$663,500	\$663,500	\$454,238	\$47,438	68.46%
	\$663,500	\$663,500	\$454,238	\$47,438	68.46%
1.02 AE Design Contingency					
UNCOMMITTED	\$44,000	\$0	\$0	\$0	
GKKWORKS CANNON DESIGN	\$0	\$44,000	\$0	\$0	
	\$44,000	\$44,000	\$0	\$0	0.00%
3. Program and Construction Management					
3.01 Program Management Fees					
UNCOMMITTED	\$182,976	\$0	\$0	\$0	
CUMMING CONSTRUCTION MGMT INC	\$21,053	\$21,053	\$21,053	\$221	100.00%
	\$204,029	\$21,053	\$21,053	\$221	10.32%
3.02 Construction Management Fees					
UNCOMMITTED	\$104,630	\$0	\$0	\$0	
CORDOBA CORPORATION	\$234,970	\$234,970	\$22,003	\$19,775	9.36%
	\$339,600	\$234,970	\$22,003	\$19,775	6.48%



Measure S Bond Program
Financial Report for August 2021
Budget vs Actuals - By School and Budget Category with Vendor Detail

QSS Data thru 8/31/2021

	Budget	Contracted to Date	Expended to Date	Quarterly Expense Jul '21 - Sep '21	% Expended
4. Construction Support Costs					
4.03 Commissioning					
UNCOMMITTED	\$0	\$0	\$0	\$0	
P2S ENGINEERING INC	\$4,329	\$4,329	\$720	\$720	16.63%
	\$4,329	\$4,329	\$720	\$720	16.63%
4.05 DSA Review Fees					
UNCOMMITTED	\$0	\$0	\$0	\$0	
DIVISION OF STATE ARCHITECT	\$57,640	\$57,640	\$57,640	\$57,640	100.00%
	\$57,640	\$57,640	\$57,640	\$57,640	100.00%
4.06 Postage, Printing & Advertising					
UNCOMMITTED	\$0	\$0	\$0	\$0	
AMERICAN REPROGRAPHICS CO LLC	\$7,500	\$7,500	\$0	\$0	0.00%
	\$7,500	\$7,500	\$0	\$0	0.00%
4.11 Preliminary Testing (Hazmat, Topo, Geo, etc)					
UNCOMMITTED	\$254,336	\$0	\$0	\$0	
ENVIRONMENTAL NETWORK CORPORATION	\$19,515	\$19,515	\$12,220	\$0	62.62%
	\$273,851	\$19,515	\$12,220	\$0	4.46%
Total 390-9520 Canyon HS Phase II Planning and Design	\$1,594,449	\$1,052,507	\$567,873	\$125,794	35.62%
390-TBD Canyon HS Science Center Unallocated Funds F22					
5. Unallocated Bond Funds					
5.04 Unallocated Bond Funds					
UNCOMMITTED	\$703,502	\$0	\$0	\$0	
	\$703,502	\$0	\$0	\$0	0.00%
Total 390-TBD Canyon HS Science Center Unallocated Funds F22	\$703,502	\$0	\$0	\$0	0.00%
390-TBD Canyon HS Unallocated Funds F22					
5. Unallocated Bond Funds					
5.04 Unallocated Bond Funds					
UNCOMMITTED	\$1,737,907	\$0	\$0	\$0	
	\$1,737,907	\$0	\$0	\$0	0.00%
Total 390-TBD Canyon HS Unallocated Funds F22	\$1,737,907	\$0	\$0	\$0	0.00%
Canyon High School	\$73,266,281	\$52,297,881	\$35,615,877	\$3,187,778	48.61%
El Modena High School					
391-0000 El Modena HS IP Surveillance Camera and Systems					
4. Construction Support Costs					



Measure S Bond Program
Financial Report for August 2021
Budget vs Actuals - By School and Budget Category with Vendor Detail

QSS Data thru 8/31/2021

	Budget	Contracted to Date	Expended to Date	Quarterly Expense Jul '21 - Sep '21	% Expended
4.13 FF&E (Laboratory Tables and Chairs, other)					
UNCOMMITTED	\$0	\$0	\$0	\$0	
CDW GOVERNMENT INC (Parts for IP Camera Systems)	\$39,388	\$39,388	\$39,388	\$0	100.00%
DIGITAL NETWORKS GROUP INC (F/I IP Camera Software)	\$11,719	\$11,719	\$11,719	\$0	100.00%
INTER-PACIFIC INC	\$30,073	\$30,073	\$30,073	\$0	100.00%
	\$81,179	\$81,179	\$81,179	\$0	100.00%
Total 391-0000 EI Modena HS IP Surveillance Camera and Systems	\$81,179	\$81,179	\$81,179	\$0	100.00%
391-9520 EI Modena HS Science Center (DSA 04-117098)					
1. Design Cost					
1.01 Architect					
UNCOMMITTED	\$548,666	\$0	\$0	\$0	
HARLEY ELLIS DEVEREAUX	\$1,954,014	\$1,954,014	\$1,926,048	\$0	98.57%
LIONAKIS	\$14,059	\$14,059	\$14,059	\$0	100.00%
	\$2,516,739	\$1,968,073	\$1,940,107	\$0	77.09%
2. Construction Cost					
2.01 Construction					
UNCOMMITTED	\$2	\$0	\$0	\$0	
ANGELES CONTRACTOR, INC	\$26,138,675	\$26,138,675	\$19,346,732	\$2,035,076	74.02%
	\$26,138,677	\$26,138,675	\$19,346,732	\$2,035,076	74.02%
2.02 OFCI and Other Construction					
UNCOMMITTED	\$12,762	\$0	\$0	\$0	
ACCO ENGINEERED SYSTEMS INC	\$355,544	\$355,544	\$335,681	\$0	94.41%
AMERICAN REPROGRAPHICS CO LLC	\$1,026	\$1,026	\$0	\$0	0.00%
ARROW RESTAURANT EQUIPMENT	\$14,232	\$14,232	\$14,213	\$0	99.87%
CAROLINA BIOLOGICAL SUPPLY	\$24,213	\$24,213	\$0	\$0	0.00%
DEVELOPMENT GROUP INC	\$52,939	\$52,939	\$52,355	\$0	98.90%
FAIR PLAY SCOREBOARDS	\$17,694	\$17,694	\$17,694	\$0	100.00%
FISHER SCIENCE EDUCATION	\$26,188	\$26,188	\$21,027	\$0	80.29%
FLINN SCIENTIFIC INC	\$12,364	\$12,364	\$0	\$0	0.00%
PROFESSIONAL TURF SPECIALTIES	\$23,460	\$23,460	\$23,460	\$0	100.00%
WW GRAINGER INC	\$6,039	\$6,039	\$2,187	\$0	36.21%
	\$546,461	\$533,699	\$466,617	\$0	85.39%
3. Program and Construction Management					
3.01 Program Management Fees					
UNCOMMITTED	\$129,796	\$0	\$0	\$0	
CUMMING CONSTRUCTION MGMT INC	\$874,030	\$969,465	\$849,663	\$75,048	97.21%
	\$1,003,826	\$969,465	\$849,663	\$75,048	84.64%



Measure S Bond Program
Financial Report for August 2021
Budget vs Actuals - By School and Budget Category with Vendor Detail

QSS Data thru 8/31/2021

	Budget	Contracted to Date	Expended to Date	Quarterly Expense Jul '21 - Sep '21	% Expended
3.02 Construction Management Fees					
UNCOMMITTED	\$63,450	\$0	\$0	\$0	
ARCADIS U.S. INC	\$2,288,659	\$2,288,659	\$2,159,149	\$142,150	94.34%
CORDOBA CORPORATION	\$90,336	\$90,336	\$90,336	\$0	100.00%
	\$2,442,445	\$2,378,995	\$2,249,485	\$142,150	92.10%
4. Construction Support Costs					
4.01 Rental					
UNCOMMITTED	\$0	\$0	\$0	\$0	
	\$0	\$0	\$0	\$0	
4.02 Title, Environmental, Stormwater Management					
UNCOMMITTED	\$25,259	\$0	\$0	\$0	
CHICAGO TITLE COMPANY	\$1,500	\$1,500	\$1,500	\$0	100.00%
CITY OF ORANGE (PUBLIC WORKS)	\$71	\$71	\$71	\$0	100.00%
CITY OF ORANGE (WATER DIVISION)	\$16,048	\$16,048	\$10,942	\$0	68.18%
ENVIRONMENTAL AUDIT INC	\$10,950	\$10,950	\$8,548	\$0	78.06%
OUSD COST OF INTEREST DISTRIBUTION	\$1	\$1	\$1	\$0	100.00%
	\$53,829	\$28,570	\$21,061	\$0	39.13%
4.03 Commissioning					
UNCOMMITTED	\$6,112	\$0	\$0	\$0	
P2S ENGINEERING INC	\$30,558	\$30,558	\$27,601	\$0	90.32%
	\$36,670	\$30,558	\$27,601	\$0	75.27%
4.04 Builders Risk Insurance					
UNCOMMITTED	\$0	\$0	\$0	\$0	
	\$0	\$0	\$0	\$0	
4.05 DSA Review Fees					
UNCOMMITTED	\$0	\$0	\$0	\$0	
DIVISION OF STATE ARCHITECT	\$306,338	\$306,338	\$306,338	\$0	100.00%
	\$306,338	\$306,338	\$306,338	\$0	100.00%
4.06 Postage, Printing & Advertising					
UNCOMMITTED	\$9,948	\$0	\$0	\$0	
AMERICAN REPROGRAPHICS CO LLC	\$20,110	\$20,110	\$19,155	\$0	95.25%
SOUTHERN CALIFORNIA NEWS GROUP	\$2,024	\$2,024	\$2,024	\$0	100.00%
	\$32,082	\$22,134	\$21,179	\$0	66.02%
4.07 DSA Inspection (IOR)					
UNCOMMITTED	\$35,720	\$0	\$0	\$0	
BPI INSPECTION SERVICE	\$521,099	\$521,099	\$483,624	\$145,670	92.81%
	\$556,819	\$521,099	\$483,624	\$145,670	86.85%
4.08 DSA Construction Phase Testing (LOR)					
UNCOMMITTED	\$0	\$0	\$0	\$0	
KOURY ENGINEERING & TESTING INC (Geotechnical Engineering)	\$777,886	\$777,886	\$710,915	\$13,968	91.39%



Measure S Bond Program
Financial Report for August 2021
Budget vs Actuals - By School and Budget Category with Vendor Detail

QSS Data thru 8/31/2021

	Budget	Contracted to Date	Expended to Date	Quarterly Expense Jul '21 - Sep '21	% Expended
4.09 Relocation	\$777,886	\$777,886	\$710,915	\$13,968	91.39%
UNCOMMITTED	\$15,740	\$0	\$0	\$0	
Beltmann Group, Inc.	\$7,080	\$7,080	\$850	\$0	12.01%
ULINE INC	\$2,180	\$2,180	\$701	\$0	32.17%
	\$25,000	\$9,260	\$1,551	\$0	6.21%
4.10 Labor Compliance					
UNCOMMITTED	\$0	\$0	\$0	\$0	
	\$0	\$0	\$0	\$0	
4.11 Preliminary Testing (Hazmat, Topo, Geo, etc)					
UNCOMMITTED	\$13,619	\$0	\$0	\$0	
ALLEGIAN FIRE PROTECTION INC	\$525	\$525	\$525	\$0	100.00%
CALIFORNIA GEOLOGICAL SURVEY (Geology and Seismology Review)	\$3,600	\$3,600	\$3,600	\$0	100.00%
ENVIRONMENTAL NETWORK CORPORATION	\$6,000	\$6,000	\$5,410	\$0	90.17%
HARLEY ELLIS DEVEREAUX	\$14,908	\$14,908	\$14,908	\$0	100.00%
NINYO & MOORE	\$29,981	\$29,981	\$29,771	\$0	99.30%
PCA ARBORISTS & CONSULTANTS INC	\$1,569	\$1,569	\$1,569	\$0	100.00%
THE CONVERSE PROFESSIONAL GROUP (Soils Investigation)	\$30,640	\$30,640	\$30,640	\$0	100.00%
	\$100,842	\$87,223	\$86,423	\$0	85.70%
4.12 Utility Connection Fees (Local Permits)					
UNCOMMITTED	\$75,949	\$0	\$0	\$0	
DIVISION OF STATE ARCHITECT	\$312	\$312	\$312	\$0	100.00%
SOUTHERN CALIFORNIA EDISON	\$3,665	\$3,665	\$3,665	\$0	100.00%
STATE WATER RESOURCES CONTROL BOARD (SWRCB)	\$993	\$993	\$993	\$0	100.00%
	\$80,919	\$4,970	\$4,970	\$0	6.14%
4.13 FF&E (Laboratory Tables and Chairs, other)					
UNCOMMITTED	\$37,999	\$0	\$0	\$0	
CDW GOVERNMENT INC (Parts for IP Camera Systems)	\$59,662	\$69,999	\$0	\$0	0.00%
INTER-PACIFIC INC	\$9,256	\$9,256	\$9,256	\$0	100.00%
SIERRA SCHOOL EQUIPMENT COMPANY	\$495,446	\$495,446	\$85,556	\$0	17.27%
TURTLE STORAGE dba AMERICAN BICYCLE CO	\$6,871	\$6,871	\$0	\$0	0.00%
VWR INTERNATIONAL LLC	\$47,922	\$52,714	\$47,922	\$39,049	100.00%
	\$657,156	\$634,286	\$142,733	\$39,049	21.72%
4.14 Legal Counsel					
UNCOMMITTED	\$0	\$0	\$0	\$0	
	\$0	\$0	\$0	\$0	
4.15 Miscellaneous Fees					
UNCOMMITTED	\$0	\$0	\$0	\$0	
	\$0	\$0	\$0	\$0	



Measure S Bond Program
Financial Report for August 2021
Budget vs Actuals - By School and Budget Category with Vendor Detail

QSS Data thru 8/31/2021

	Budget	Contracted to Date	Expended to Date	Quarterly Expense Jul '21 - Sep '21	% Expended
5. Contingency					
5.01 Construction Contingency					
UNCOMMITTED	\$1,661,123	\$0	\$0	\$0	
	\$1,661,123	\$0	\$0	\$0	0.00%
5.02 Project Contingency					
UNCOMMITTED	\$1,867,736	\$0	\$0	\$0	
ARCADIS U.S. INC	\$0	\$0	\$0	\$0	
	\$1,867,736	\$0	\$0	\$0	0.00%
Total 391-9520 El Modena HS Science Center (DSA 04-117098)	\$38,804,547	\$34,411,231	\$26,658,999	\$2,450,961	68.70%
391-9520 El Modena HS Phase II Planning and Design					
1. Design Cost					
1.01 Architect					
UNCOMMITTED	\$624	\$0	\$0	\$0	
HARLEY ELLIS DEVEREAUX	\$1,864,560	\$1,864,560	\$1,305,110	\$56,353	70.00%
	\$1,865,184	\$1,864,560	\$1,305,110	\$56,353	69.97%
3. Program and Construction Management					
3.01 Program Management Fees					
UNCOMMITTED	\$86,942	\$0	\$0	\$0	
CUMMING CONSTRUCTION MGMT INC	\$59,138	\$59,138	\$59,138	\$621	100.00%
	\$146,080	\$59,138	\$59,138	\$621	40.48%
3.02 Construction Management Fees					
UNCOMMITTED	\$0	\$0	\$0	\$0	
CORDOBA CORPORATION	\$301,850	\$301,850	\$53,715	\$2,013	17.80%
	\$301,850	\$301,850	\$53,715	\$2,013	17.80%
4. Construction Support Costs					
4.03 Commissioning					
UNCOMMITTED	\$0	\$0	\$0	\$0	
P2S ENGINEERING INC	\$11,890	\$11,890	\$2,220	\$2,220	18.67%
	\$11,890	\$11,890	\$2,220	\$2,220	18.67%
4.05 DSA Review Fees					
UNCOMMITTED	\$0	\$0	\$0	\$0	
DIVISION OF STATE ARCHITECT	\$212,750	\$212,750	\$212,750	\$0	100.00%
	\$212,750	\$212,750	\$212,750	\$0	100.00%
4.06 Postage, Printing & Advertising					
UNCOMMITTED	\$0	\$0	\$0	\$0	
AMERICAN REPROGRAPHICS CO LLC	\$8,000	\$8,000	\$0	\$0	0.00%
	\$8,000	\$8,000	\$0	\$0	0.00%



Measure S Bond Program

Financial Report for August 2021

Budget vs Actuals - By School and Budget Category with Vendor Detail

QSS Data thru 8/31/2021

	Budget	Contracted to Date	Expended to Date	Quarterly Expense Jul '21 - Sep '21	% Expended
4.11 Preliminary Testing (Hazmat, Topo, Geo, etc)					
UNCOMMITTED	\$15,000	\$0	\$0	\$0	
ARMSTRONG & BROOKS CONSULTING ENG	\$20,000	\$20,000	\$4,940	\$0	24.70%
GROUP DELTA CONSULTANTS INC	\$17,100	\$17,100	\$10,004	\$0	58.50%
KOURY ENGINEERING & TESTING INC (Geotechnical Engineering)	\$22,350	\$22,350	\$22,350	\$0	100.00%
	\$74,450	\$59,450	\$37,294	\$0	50.09%
Total 391-9520 El Modena HS Phase II Planning and Design	\$2,620,204	\$2,517,638	\$1,670,227	\$61,207	63.74%
391-9520 El Modena HS Quad Shade Structures (DSA 04-119124)					
1. Design Cost					
1.01 Architect					
UNCOMMITTED	\$0	\$0	\$0	\$0	
HARLEY ELLIS DEVEREAUX	\$79,340	\$79,340	\$0	\$0	0.00%
	\$79,340	\$79,340	\$0	\$0	0.00%
4. Construction Support Costs					
4.05 DSA Review Fees					
UNCOMMITTED	\$0	\$0	\$0	\$0	
DIVISION OF STATE ARCHITECT	\$9,650	\$9,650	\$9,650	\$0	100.00%
	\$9,650	\$9,650	\$9,650	\$0	100.00%
4.06 Postage, Printing & Advertising					
UNCOMMITTED	\$0	\$0	\$0	\$0	
AMERICAN REPROGRAPHICS CO LLC	\$86	\$86	\$86	\$0	100.00%
	\$86	\$86	\$86	\$0	100.00%
5. Contingency					
5.01 Construction Contingency					
UNCOMMITTED	\$0	\$0	\$0	\$0	
	\$0	\$0	\$0	\$0	
5.02 Project Contingency					
UNCOMMITTED	\$0	\$0	\$0	\$0	
	\$0	\$0	\$0	\$0	
Total 391-9520 El Modena HS Quad Shade Structures (DSA 04-119124)	\$89,076	\$89,076	\$9,736	\$0	10.93%
391-TBD El Modena HS Science Center Unallocated Funds F22					
5. Unallocated Bond Funds					
5.04 Unallocated Bond Funds					
UNCOMMITTED	\$1,138,078	\$0	\$0	\$0	
	\$1,138,078	\$0	\$0	\$0	0.00%



Measure S Bond Program
Financial Report for August 2021
Budget vs Actuals - By School and Budget Category with Vendor Detail

QSS Data thru 8/31/2021

	Budget	Contracted to Date	Expended to Date	Quarterly Expense Jul '21 - Sep '21	% Expended
Total 391-TBD El Modena HS Science Center Unallocated Funds F22	\$1,138,078	\$0	\$0	\$0	0.00%
391-9520 El Modena HS Unallocated Funds F21					
4. Construction Support Costs					
4.15 Miscellaneous Fees					
UNCOMMITTED	\$0	\$0	\$0	\$0	
OUSD COST OF INTEREST DISTRIBUTION	\$22,550	\$22,550	\$22,550	\$0	100.00%
	\$22,550	\$22,550	\$22,550	\$0	100.00%
5. Program Reserve					
5.03 Interest Earned - Reserve					
UNCOMMITTED	\$0	\$0	\$0	\$0	
	\$0	\$0	\$0	\$0	
Total 391-9520 El Modena HS Unallocated Funds F21	\$22,550	\$22,550	\$22,550	\$0	100.00%
391-TBD El Modena HS Unallocated Funds F22					
5. Unallocated Bond Funds					
5.04 Unallocated Bond Funds					
UNCOMMITTED	\$30,017,362	\$0	\$0	\$0	
	\$30,017,362	\$0	\$0	\$0	0.00%
Total 391-TBD El Modena HS Unallocated Funds F22	\$30,017,362	\$0	\$0	\$0	0.00%
El Modena High School	\$72,772,997	\$37,121,674	\$28,442,691	\$2,512,168	39.08%
Orange High School					
392-0000 Orange HS IP Surveillance Camera and Systems					
4. Construction Support Costs					
4.13 FF&E (Laboratory Tables and Chairs, other)					
UNCOMMITTED	\$0	\$0	\$0	\$0	
CDW GOVERNMENT INC (Parts for IP Camera Systems)	\$53,662	\$53,662	\$53,662	\$0	100.00%
DIGITAL NETWORKS GROUP INC (F/I IP Camera Software)	\$13,569	\$13,569	\$13,569	\$0	100.00%
INTER-PACIFIC INC	\$34,837	\$34,837	\$34,837	\$0	100.00%
	\$102,068	\$102,068	\$102,068	\$0	100.00%
Total 392-0000 Orange HS IP Surveillance Camera and Systems	\$102,068	\$102,068	\$102,068	\$0	100.00%
392-9520 Orange HS Science Bldg (DSA 04-116859)					
1. Design Cost					



Measure S Bond Program
Financial Report for August 2021
Budget vs Actuals - By School and Budget Category with Vendor Detail

QSS Data thru 8/31/2021

	Budget	Contracted to Date	Expended to Date	Quarterly Expense Jul '21 - Sep '21	% Expended
1.01 Architect					
UNCOMMITTED	\$151,933	\$0	\$0	\$0	
LIONAKIS	\$1,854,196	\$1,854,196	\$1,822,904	\$1,380	98.31%
	\$2,006,129	\$1,854,196	\$1,822,904	\$1,380	90.87%

2. Construction Cost

2.01 Construction

UNCOMMITTED	\$1	\$0	\$0	\$0	
GIANNELLI ELECTRIC INC	\$14,878	\$14,878	\$14,878	\$0	100.00%
INTEGRATED DEMOLITION AND REMEDIATION (Abatement and Demolition)	\$44,800	\$44,800	\$44,800	\$0	100.00%
J & A FENCE (Custodial Storage Fencing)	\$0	\$0	\$0	\$0	
KYA SERVICES LLC (Install Carpet)	\$0	\$0	\$0	\$0	
OLESH, KEITH (Termite Services)	\$0	\$0	\$0	\$0	
PINNER CONSTRUCTION	\$27,190,987	\$27,190,987	\$27,190,987	\$23,485	100.00%
SOUTHERN CALIFORNIA NEWS GROUP	\$0	\$0	\$0	\$0	
TIME & ALARM SYSTEMS	\$3,100	\$3,100	\$3,100	\$0	100.00%
UNIVERSAL ASPHALT CO (Remove and Patch Asphalt)	\$6,830	\$6,830	\$6,830	\$0	100.00%
	\$27,260,596	\$27,260,595	\$27,260,595	\$23,485	100.00%

2.02 OFCI and Other Construction

UNCOMMITTED	\$69,720	\$0	\$0	\$0	
ACCO ENGINEERED SYSTEMS INC	\$62,883	\$62,883	\$62,883	\$0	100.00%
AMERICAN REPROGRAPHICS CO LLC	\$1,026	\$1,026	\$0	\$0	0.00%
ARROW RESTAURANT EQUIPMENT	\$13,556	\$13,556	\$13,432	\$0	99.08%
CAROLINA BIOLOGICAL SUPPLY	\$16,559	\$16,559	\$16,480	\$0	99.52%
CITY OF ORANGE (PUBLIC WORKS)	\$2,000	\$2,000	\$2,000	\$0	100.00%
DEVELOPMENT GROUP INC	\$37,866	\$37,866	\$37,866	\$0	100.00%
FISHER SCIENCE EDUCATION	\$25,736	\$25,736	\$24,863	\$6,463	96.61%
FLINN SCIENTIFIC INC	\$10,263	\$10,263	\$10,263	\$0	100.00%
GIANNELLI ELECTRIC INC	\$24,684	\$24,684	\$24,684	\$0	100.00%
GRUETT TREE CO INC (Removal of Trees)	\$7,625	\$7,625	\$7,625	\$0	100.00%
J & A FENCE (Custodial Storage Fencing)	\$6,885	\$6,885	\$6,885	\$0	100.00%
KYA SERVICES LLC (Install Carpet)	\$0	\$0	\$0	\$0	
OLESH, KEITH (Termite Services)	\$1,500	\$1,500	\$1,500	\$0	100.00%
SOUTHERN CALIFORNIA NEWS GROUP	\$0	\$0	\$0	\$0	
TRIMARK RAYGAL LLC	\$0	\$0	\$0	\$0	
VORTEX INDUSTRIES, INC.	\$6,804	\$6,804	\$6,804	\$0	100.00%
WW GRAINGER INC	\$2,292	\$2,292	\$2,292	\$0	100.00%
	\$289,399	\$219,679	\$217,576	\$6,463	75.18%

3. Program and Construction Management



Measure S Bond Program
Financial Report for August 2021
Budget vs Actuals - By School and Budget Category with Vendor Detail

QSS Data thru 8/31/2021

	Budget	Contracted to Date	Expended to Date	Quarterly Expense Jul '21 - Sep '21	% Expended
3.01 Program Management Fees					
UNCOMMITTED	\$542,973	\$0	\$0	\$0	
CUMMING CONSTRUCTION MGMT INC	\$998,778	\$1,050,959	\$968,160	\$67,216	96.93%
	\$1,541,750	\$1,050,959	\$968,160	\$67,216	62.80%
3.02 Construction Management Fees					
UNCOMMITTED	\$59,981	\$0	\$0	\$0	
BALFOUR BEATTY CONSTRUCTION	\$1,757,253	\$1,757,254	\$1,755,159	\$0	99.88%
CORDOBA CORPORATION	\$86,549	\$86,549	\$86,434	\$0	99.87%
	\$1,903,783	\$1,843,803	\$1,841,593	\$0	96.73%
4. Construction Support Costs					
4.01 Rental					
UNCOMMITTED	\$0	\$0	\$0	\$0	
	\$0	\$0	\$0	\$0	
4.02 Title, Environmental, Stormwater Management					
UNCOMMITTED	\$47,386	\$0	\$0	\$0	
CHICAGO TITLE COMPANY	\$1,500	\$1,500	\$1,500	\$0	100.00%
OUSD COST OF INTEREST DISTRIBUTION	\$1	\$1	\$1	\$0	100.00%
PLACEWORKS INC	\$52,231	\$52,231	\$52,231	\$0	100.00%
STATE WATER RESOURCES CONTROL BOARD (SWRCB)	\$726	\$726	\$726	\$0	100.00%
	\$101,844	\$54,458	\$54,458	\$0	53.47%
4.03 Commissioning					
UNCOMMITTED	\$6,117	\$0	\$0	\$0	
P2S ENGINEERING INC	\$30,585	\$30,585	\$30,170	\$0	98.64%
	\$36,702	\$30,585	\$30,170	\$0	82.20%
4.04 Builders Risk Insurance					
UNCOMMITTED	\$0	\$0	\$0	\$0	
	\$0	\$0	\$0	\$0	
4.05 DSA Review Fees					
UNCOMMITTED	\$28,992	\$0	\$0	\$0	
DIVISION OF STATE ARCHITECT	\$342,871	\$342,871	\$342,871	\$90,121	100.00%
OUSD REVOLVING CASH	\$500	\$500	\$500	\$0	100.00%
	\$372,364	\$343,371	\$343,371	\$90,121	92.21%
4.06 Postage, Printing & Advertising					
UNCOMMITTED	\$36,374	\$0	\$0	\$0	
AMERICAN REPROGRAPHICS CO LLC	\$11,734	\$11,734	\$8,734	\$0	74.43%
SOUTHERN CALIFORNIA NEWS GROUP	\$8,518	\$8,518	\$8,518	\$0	100.00%
	\$56,626	\$20,252	\$17,252	\$0	30.47%
4.07 DSA Inspection (IOR)					
UNCOMMITTED	\$145,585	\$0	\$0	\$0	
KNOWLAND CONSTRUCTION SERVICES	\$321,507	\$321,507	\$286,404	\$0	89.08%



Measure S Bond Program
Financial Report for August 2021
Budget vs Actuals - By School and Budget Category with Vendor Detail

QSS Data thru 8/31/2021

	Budget	Contracted to Date	Expended to Date	Quarterly Expense Jul '21 - Sep '21	% Expended
4.08 DSA Construction Phase Testing (LOR)	\$467,092	\$321,507	\$286,404	\$0	61.32%
UNCOMMITTED	\$125,025	\$0	\$0	\$0	
NINYO & MOORE	\$327,624	\$327,624	\$227,848	\$4,904	69.55%
	\$452,649	\$327,624	\$227,848	\$4,904	50.34%
4.09 Relocation					
UNCOMMITTED	\$15,671	\$0	\$0	\$0	
Beltmann Group, Inc.	\$6,229	\$6,229	\$4,876	\$0	78.27%
ULINE INC	\$3,100	\$3,100	\$3,065	\$0	98.86%
	\$25,000	\$9,329	\$7,941	\$0	31.76%
4.10 Labor Compliance					
UNCOMMITTED	\$40,951	\$0	\$0	\$0	
	\$40,951	\$0	\$0	\$0	0.00%
4.11 Preliminary Testing (Hazmat, Topo, Geo, etc)					
UNCOMMITTED	\$198,437	\$0	\$0	\$0	
CALIFORNIA GEOLOGICAL SURVEY (Geology and Seismology Review)	\$3,600	\$3,600	\$3,600	\$0	100.00%
ENVIRONMENTAL NETWORK CORPORATION	\$4,925	\$4,925	\$2,590	\$0	52.59%
KOURY ENGINEERING & TESTING INC (Geotechnical Engineering)	\$13,300	\$13,300	\$13,300	\$0	100.00%
PENCO ENGINEERING INC (Topographical Survey Services)	\$42,350	\$42,350	\$41,070	\$0	96.98%
RMA GROUP (dba SITESCAN)	\$49,533	\$49,533	\$49,533	\$0	100.00%
	\$312,145	\$113,708	\$110,093	\$0	35.27%
4.12 Utility Connection Fees (Local Permits)					
UNCOMMITTED	\$151,714	\$0	\$0	\$0	
CITY OF ORANGE (PUBLIC WORKS)	\$2,500	\$2,500	\$2,500	\$0	100.00%
SOUTHERN CALIFORNIA EDISON	\$6,912	\$6,912	\$6,912	\$0	100.00%
SOUTHERN CALIFORNIA GAS CO	\$2,124	\$2,124	\$2,124	\$0	100.00%
STATE WATER RESOURCES CONTROL BOARD (SWRCB)	\$553	\$553	\$553	\$0	100.00%
	\$163,803	\$12,089	\$12,089	\$0	7.38%
4.13 FF&E (Laboratory Tables and Chairs, other)					
UNCOMMITTED	\$10,748	\$0	\$0	\$0	
CDW GOVERNMENT INC (Parts for IP Camera Systems)	\$59,662	\$59,662	\$59,658	\$0	99.99%
CONEXWEST	\$9,466	\$9,466	\$9,419	\$0	99.51%
CP PRODUCTS INC	\$4,834	\$4,834	\$4,834	\$0	100.00%
DEVELOPMENT GROUP INC	\$0	\$0	\$0	\$0	
FISHER SCIENCE EDUCATION	\$0	\$0	\$0	\$0	
GORM	\$11,423	\$11,423	\$11,415	\$4,173	99.93%
HILLYARD INC	\$32,572	\$32,572	\$32,572	\$0	100.00%
INTER-PACIFIC INC	\$7,904	\$7,904	\$7,904	\$0	100.00%
PSI DBA WATER VISIONS INC	\$8,527	\$8,527	\$8,527	\$0	100.00%
SIERRA SCHOOL EQUIPMENT COMPANY	\$464,248	\$464,248	\$464,248	\$0	100.00%



Measure S Bond Program

Financial Report for August 2021

Budget vs Actuals - By School and Budget Category with Vendor Detail

QSS Data thru 8/31/2021

	Budget	Contracted to Date	Expended to Date	Quarterly Expense Jul '21 - Sep '21	% Expended
TURTLE STORAGE dba AMERICAN BICYCLE CO	\$6,871	\$6,871	\$6,537	\$0	95.14%
VORTEX INDUSTRIES, INC.	\$0	\$0	\$0	\$0	
VWR INTERNATIONAL LLC	\$34,314	\$34,314	\$34,314	\$0	100.00%
	\$650,570	\$639,821	\$639,428	\$4,173	98.29%
4.14 Legal Counsel					
UNCOMMITTED	\$81,902	\$0	\$0	\$0	
	\$81,902	\$0	\$0	\$0	0.00%
4.15 Miscellaneous Fees					
UNCOMMITTED	\$0	\$0	\$0	\$0	
	\$0	\$0	\$0	\$0	
5. Contingency					
5.01 Construction Contingency					
UNCOMMITTED	\$1,415,413	\$0	\$0	\$0	
	\$1,415,413	\$0	\$0	\$0	0.00%
5.02 Project Contingency					
UNCOMMITTED	\$4,690,464	\$0	\$0	\$0	
	\$4,690,464	\$0	\$0	\$0	0.00%
Total 392-9520 Orange HS Science Bldg (DSA 04-116859)	\$41,869,182	\$34,101,976	\$33,839,881	\$197,741	80.82%
392-9520 Orange HS Shade Structure (DSA 04-118351)					
1. Design Cost					
1.01 Architect					
UNCOMMITTED	\$0	\$0	\$0	\$0	
LIONAKIS	\$17,317	\$17,317	\$17,317	\$0	100.00%
	\$17,317	\$17,317	\$17,317	\$0	100.00%
2. Construction Cost					
2.01 Construction					
UNCOMMITTED	\$0	\$0	\$0	\$0	
PINNER CONSTRUCTION	\$113,500	\$113,500	\$113,500	\$0	100.00%
	\$113,500	\$113,500	\$113,500	\$0	100.00%
3. Program and Construction Management					
3.01 Program Management Fees					
UNCOMMITTED	\$0	\$0	\$0	\$0	
CUMMING CONSTRUCTION MGMT INC	\$1,838	\$1,838	\$1,838	\$0	100.00%
	\$1,838	\$1,838	\$1,838	\$0	100.00%
3.02 Construction Management Fees					
UNCOMMITTED	\$0	\$0	\$0	\$0	



Measure S Bond Program

Financial Report for August 2021

Budget vs Actuals - By School and Budget Category with Vendor Detail

QSS Data thru 8/31/2021

	Budget	Contracted to Date	Expended to Date	Quarterly Expense Jul '21 - Sep '21	% Expended
BALFOUR BEATTY CONSTRUCTION	\$5,956	\$5,956	\$5,956	\$0	100.00%
	\$5,956	\$5,956	\$5,956	\$0	100.00%
4. Construction Support Costs					
4.05 DSA Review Fees					
UNCOMMITTED	\$0	\$0	\$0	\$0	
DIVISION OF STATE ARCHITECT	\$1,873	\$1,873	\$1,873	\$0	100.00%
	\$1,873	\$1,873	\$1,873	\$0	100.00%
4.07 DSA Inspection (IOR)					
UNCOMMITTED	\$0	\$0	\$0	\$0	
KNOWLAND CONSTRUCTION SERVICES	\$1,740	\$1,740	\$1,740	\$0	100.00%
	\$1,740	\$1,740	\$1,740	\$0	100.00%
4.08 DSA Construction Phase Testing (LOR)					
UNCOMMITTED	\$0	\$0	\$0	\$0	
NINYO & MOORE	\$7,408	\$7,408	\$7,408	\$0	100.00%
	\$7,408	\$7,408	\$7,408	\$0	100.00%
Total 392-9520 Orange HS Shade Structure (DSA 04-118351)	\$149,631	\$149,631	\$149,631	\$0	100.00%
392-9520 Orange HS Site Improvements (DSA 04-116673)					
1. Design Cost					
1.01 Architect					
UNCOMMITTED	\$0	\$0	\$0	\$0	
LIONAKIS	\$450,189	\$450,189	\$446,286	\$0	99.13%
SILVER CREEK INDUSTRIES INC (Engineering for Warming Kitchen Relocatable Building)	\$29,682	\$29,682	\$29,682	\$0	100.00%
	\$479,871	\$479,871	\$475,968	\$0	99.19%
2. Construction Cost					
2.01 Construction					
UNCOMMITTED	\$0	\$0	\$0	\$0	
KYA SERVICES LLC (Install Carpet)	\$20,824	\$20,824	\$9,564	\$0	45.93%
SWINERTON BUILDERS	\$6,556,428	\$6,556,428	\$6,556,428	\$0	100.00%
TRIMARK RAYGAL LLC	\$89,860	\$89,860	\$89,860	\$0	100.00%
	\$6,667,112	\$6,667,112	\$6,655,852	\$0	99.83%
2.02 OFCI and Other Construction					
UNCOMMITTED	\$0	\$0	\$0	\$0	
ACCO ENGINEERED SYSTEMS INC	\$209,074	\$209,074	\$209,074	\$0	100.00%
	\$209,074	\$209,074	\$209,074	\$0	100.00%
3. Program and Construction Management					



Measure S Bond Program

Financial Report for August 2021

Budget vs Actuals - By School and Budget Category with Vendor Detail

QSS Data thru 8/31/2021

	Budget	Contracted to Date	Expended to Date	Quarterly Expense Jul '21 - Sep '21	% Expended
3.01 Program Management Fees					
UNCOMMITTED	\$0	\$0	\$0	\$0	
BALFOUR BEATTY CONSTRUCTION	\$0	\$0	\$0	\$0	
CUMMING CONSTRUCTION MGMT INC	\$115,479	\$115,479	\$115,479	\$0	100.00%
	\$115,479	\$115,479	\$115,479	\$0	100.00%
3.02 Construction Management Fees					
UNCOMMITTED	\$0	\$0	\$0	\$0	
BALFOUR BEATTY CONSTRUCTION	\$296,554	\$296,554	\$296,554	\$0	100.00%
	\$296,554	\$296,554	\$296,554	\$0	100.00%
4. Construction Support Costs					
4.02 Title, Environmental, Stormwater Management					
UNCOMMITTED	\$0	\$0	\$0	\$0	
ORANGE COUNTY HEALTH CARE AGENCY	\$1,470	\$1,470	\$1,470	\$0	100.00%
	\$1,470	\$1,470	\$1,470	\$0	100.00%
4.03 Commissioning					
UNCOMMITTED	\$0	\$0	\$0	\$0	
P2S ENGINEERING INC	\$4,755	\$4,755	\$4,667	\$0	98.15%
	\$4,755	\$4,755	\$4,667	\$0	98.15%
4.05 DSA Review Fees					
UNCOMMITTED	\$3,853	\$0	\$0	\$0	
DIVISION OF STATE ARCHITECT	\$94,585	\$94,585	\$94,585	\$0	100.00%
	\$98,438	\$94,585	\$94,585	\$0	96.09%
4.06 Postage, Printing & Advertising					
UNCOMMITTED	\$1	\$0	\$0	\$0	
AMERICAN REPROGRAPHICS CO LLC	\$7,630	\$7,630	\$7,630	\$0	100.00%
SOUTHERN CALIFORNIA NEWS GROUP	\$1,264	\$1,264	\$1,264	\$0	100.00%
	\$8,895	\$8,894	\$8,894	\$0	99.99%
4.07 DSA Inspection (IOR)					
UNCOMMITTED	\$0	\$0	\$0	\$0	
KNOWLAND CONSTRUCTION SERVICES	\$104,480	\$104,480	\$96,985	\$0	92.83%
	\$104,480	\$104,480	\$96,985	\$0	92.83%
4.08 DSA Construction Phase Testing (LOR)					
UNCOMMITTED	\$0	\$0	\$0	\$0	
NINYO & MOORE	\$113,255	\$113,255	\$112,544	\$0	99.37%
	\$113,255	\$113,255	\$112,544	\$0	99.37%
4.11 Preliminary Testing (Hazmat, Topo, Geo, etc)					
UNCOMMITTED	\$0	\$0	\$0	\$0	
ENVIRONMENTAL NETWORK CORPORATION	\$9,100	\$9,100	\$9,012	\$0	99.03%
	\$9,100	\$9,100	\$9,012	\$0	99.03%



Measure S Bond Program
Financial Report for August 2021
Budget vs Actuals - By School and Budget Category with Vendor Detail

QSS Data thru 8/31/2021

	Budget	Contracted to Date	Expended to Date	Quarterly Expense Jul '21 - Sep '21	% Expended
Total 392-9520 Orange HS Site Improvements (DSA 04-116673)	\$8,108,482	\$8,104,629	\$8,081,083	\$0	99.66%
392-9520 Orange HS Phase II Planning and Design					
1. Design Cost					
1.01 Architect					
UNCOMMITTED	\$121,050	\$0	\$0	\$0	
LIONAKIS	\$1,409,450	\$1,409,450	\$879,615	\$46,562	62.41%
	\$1,530,500	\$1,409,450	\$879,615	\$46,562	57.47%
3. Program and Construction Management					
3.01 Program Management Fees					
UNCOMMITTED	\$438	\$0	\$0	\$0	
CUMMING CONSTRUCTION MGMT INC	\$49,399	\$49,399	\$49,399	\$519	100.00%
	\$49,837	\$49,399	\$49,399	\$519	99.12%
3.02 Construction Management Fees					
UNCOMMITTED	\$2,100	\$0	\$0	\$0	
CORDOBA CORPORATION	\$369,950	\$369,950	\$49,728	\$46,013	13.44%
	\$372,050	\$369,950	\$49,728	\$46,013	13.37%
4. Construction Support Costs					
4.03 Commissioning					
UNCOMMITTED	\$0	\$0	\$0	\$0	
P2S ENGINEERING INC	\$4,801	\$4,801	\$410	\$410	8.54%
	\$4,801	\$4,801	\$410	\$410	8.54%
4.05 DSA Review Fees					
UNCOMMITTED	\$0	\$0	\$0	\$0	
DIVISION OF STATE ARCHITECT	\$153,550	\$153,550	\$153,550	\$0	100.00%
	\$153,550	\$153,550	\$153,550	\$0	100.00%
4.06 Postage, Printing & Advertising					
UNCOMMITTED	\$0	\$0	\$0	\$0	
AMERICAN REPROGRAPHICS CO LLC	\$14,000	\$14,000	\$123	\$123	0.88%
	\$14,000	\$14,000	\$123	\$123	0.88%
4.09 Relocation					
UNCOMMITTED	\$0	\$0	\$0	\$0	
Beltmann Group, Inc.	\$851	\$851	\$851	\$851	100.00%
	\$851	\$851	\$851	\$851	100.00%
4.11 Preliminary Testing (Hazmat, Topo, Geo, etc)					
UNCOMMITTED	\$59,089	\$0	\$0	\$0	
CANNON CORPORATION	\$50,000	\$50,000	\$35,076	\$0	70.15%
ENVIRONMENTAL NETWORK CORPORATION	\$15,380	\$15,380	\$6,350	\$0	41.29%
NINYO & MOORE	\$20,955	\$20,955	\$20,955	\$0	100.00%

**Measure S Bond Program**

Financial Report for August 2021

Budget vs Actuals - By School and Budget Category with Vendor Detail

QSS Data thru 8/31/2021

	Budget	Contracted to Date	Expended to Date	Quarterly Expense Jul '21 - Sep '21	% Expended
	\$145,424	\$86,335	\$62,381	\$0	42.90%
Total 392-9520 Orange HS Phase II Planning and Design	\$2,271,013	\$2,088,336	\$1,196,056	\$94,477	52.67%
392-TBD Orange HS Science Center Unallocated Funds F22					
5. Unallocated Bond Funds					
5.04 Unallocated Bond Funds					
UNCOMMITTED	\$1,520,780	\$0	\$0	\$0	
	\$1,520,780	\$0	\$0	\$0	0.00%
Total 392-TBD Orange HS Science Center Unallocated Funds F22	\$1,520,780	\$0	\$0	\$0	0.00%
392-9520 Orange HS Unallocated Funds F21					
5. Program Reserve					
5.03 Interest Earned - Reserve					
UNCOMMITTED	\$840,506	\$0	\$0	\$0	
	\$840,506	\$0	\$0	\$0	0.00%
4. Construction Support Costs					
4.15 Miscellaneous Fees					
UNCOMMITTED	\$0	\$0	\$0	\$0	
OUSD COST OF INTEREST DISTRIBUTION	\$25,457	\$25,457	\$25,457	\$0	100.00%
	\$25,457	\$25,457	\$25,457	\$0	100.00%
Total 392-9520 Orange HS Unallocated Funds F21	\$865,963	\$25,457	\$25,457	\$0	2.94%
392-TBD Orange HS Unallocated Funds F22					
5. Unallocated Bond Funds					
5.04 Unallocated Bond Funds					
UNCOMMITTED	\$17,978,844	\$0	\$0	\$0	
	\$17,978,844	\$0	\$0	\$0	0.00%
Total 392-TBD Orange HS Unallocated Funds F22	\$17,978,844	\$0	\$0	\$0	0.00%
Orange High School	\$72,865,963	\$44,572,096	\$43,394,176	\$292,219	59.55%
Villa Park High School					
394-0000 Villa Park HS IP Surveillance Camera and Systems					
4. Construction Support Costs					
4.13 FF&E (Laboratory Tables and Chairs, other)					
UNCOMMITTED	\$0	\$0	\$0	\$0	



Measure S Bond Program

Financial Report for August 2021

Budget vs Actuals - By School and Budget Category with Vendor Detail

QSS Data thru 8/31/2021

	Budget	Contracted to Date	Expended to Date	Quarterly Expense Jul '21 - Sep '21	% Expended
CDW GOVERNMENT INC (Parts for IP Camera Systems)	\$32,182	\$32,182	\$32,182	\$0	100.00%
DIGITAL NETWORKS GROUP INC (F/I IP Camera Software)	\$8,635	\$8,635	\$8,635	\$0	100.00%
INTER-PACIFIC INC	\$22,133	\$22,133	\$22,133	\$0	100.00%
	\$62,949	\$62,949	\$62,949	\$0	100.00%
Total 394-0000 Villa Park HS IP Surveillance Camera and Systems	\$62,949	\$62,949	\$62,949	\$0	100.00%
394-9520 Villa Park HS Science Center (DSA 04-117022)					
1. Design Cost					
1.01 Architect					
UNCOMMITTED	\$132,416	\$0	\$0	\$0	
DKS ASSOCIATES	\$85,690	\$85,690	\$80,657	\$0	94.13%
LIONAKIS	\$14,059	\$14,059	\$14,059	\$0	100.00%
LPA INC	\$2,472,131	\$2,472,131	\$2,340,234	\$38,294	94.66%
	\$2,704,296	\$2,571,880	\$2,434,950	\$38,294	90.04%
2. Construction Cost					
2.01 Construction					
UNCOMMITTED	\$138,538	\$0	\$0	\$0	
ANGELES CONTRACTOR, INC	\$20,232,690	\$20,232,690	\$12,810,630	\$2,298,189	63.32%
	\$20,371,228	\$20,232,690	\$12,810,630	\$2,298,189	62.89%
2.02 OFCI and Other Construction					
UNCOMMITTED	\$111,781	\$0	\$0	\$0	
ACCO ENGINEERED SYSTEMS INC	\$150,829	\$150,829	\$127,947	\$0	84.83%
AMERICAN REPROGRAPHICS CO LLC	\$1,026	\$1,026	\$0	\$0	0.00%
ARROW RESTAURANT EQUIPMENT	\$13,887	\$13,887	\$13,869	\$0	99.86%
CAROLINA BIOLOGICAL SUPPLY	\$24,213	\$24,213	\$0	\$0	0.00%
DEVELOPMENT GROUP INC	\$52,939	\$52,939	\$52,937	\$0	100.00%
FISHER SCIENCE EDUCATION	\$26,187	\$26,187	\$21,027	\$0	80.29%
FLINN SCIENTIFIC INC	\$12,364	\$12,364	\$0	\$0	0.00%
WW GRAINGER INC	\$3,043	\$3,043	\$1,148	\$1,039	37.74%
	\$396,269	\$284,488	\$216,927	\$1,039	54.74%
3. Program and Construction Management					
3.01 Program Management Fees					
UNCOMMITTED	\$283,964	\$0	\$0	\$0	
CORDOBA CORPORATION	\$0	\$0	\$0	\$0	
CUMMING CONSTRUCTION MGMT INC	\$781,817	\$880,229	\$763,957	\$20,351	97.72%
	\$1,065,781	\$880,229	\$763,957	\$20,351	71.68%
3.02 Construction Management Fees					
UNCOMMITTED	\$6,082	\$0	\$0	\$0	



Measure S Bond Program
Financial Report for August 2021
Budget vs Actuals - By School and Budget Category with Vendor Detail

QSS Data thru 8/31/2021

	Budget	Contracted to Date	Expended to Date	Quarterly Expense Jul '21 - Sep '21	% Expended
CORDOBA CORPORATION	\$1,998,493	\$1,998,493	\$1,956,156	\$39,868	97.88%
	\$2,004,575	\$1,998,493	\$1,956,156	\$39,868	97.58%
4. Construction Support Costs					
4.01 Rental					
UNCOMMITTED	\$0	\$0	\$0	\$0	
	\$0	\$0	\$0	\$0	0.00%
4.02 Title, Environmental, Stormwater Management					
UNCOMMITTED	\$36,668	\$0	\$0	\$0	
CHICAGO TITLE COMPANY	\$750	\$750	\$750	\$0	100.00%
OUSD COST OF INTEREST DISTRIBUTION	\$1	\$1	\$1	\$0	100.00%
PLACEWORKS INC	\$87,059	\$87,059	\$73,237	\$0	84.12%
STATE WATER RESOURCES CONTROL BOARD (SWRCB)	\$484	\$484	\$484	\$0	100.00%
	\$124,962	\$88,294	\$74,471	\$0	59.60%
4.03 Commissioning					
UNCOMMITTED	\$9,722	\$0	\$0	\$0	
P2S ENGINEERING INC	\$31,635	\$31,635	\$26,688	\$674	84.36%
	\$41,357	\$31,635	\$26,688	\$674	64.53%
4.04 Builders Risk Insurance					
UNCOMMITTED	\$0	\$0	\$0	\$0	
	\$0	\$0	\$0	\$0	
4.05 DSA Review Fees					
UNCOMMITTED	\$117,302	\$0	\$0	\$0	
DIVISION OF STATE ARCHITECT	\$289,250	\$289,250	\$289,250	\$0	100.00%
	\$406,552	\$289,250	\$289,250	\$0	71.15%
4.06 Postage, Printing & Advertising					
UNCOMMITTED	\$15,465	\$0	\$0	\$0	
AMERICAN REPROGRAPHICS CO LLC	\$16,315	\$16,315	\$12,630	\$0	77.41%
SOUTHERN CALIFORNIA NEWS GROUP	\$1,768	\$1,768	\$1,768	\$0	100.00%
	\$33,548	\$18,083	\$14,398	\$0	42.92%
4.07 DSA Inspection (IOR)					
UNCOMMITTED	\$1	\$0	\$0	\$0	
BPI INSPECTION SERVICE	\$450,375	\$450,375	\$433,678	\$72,643	96.29%
	\$450,376	\$450,375	\$433,678	\$72,643	96.29%
4.08 DSA Construction Phase Testing (LOR)					
UNCOMMITTED	\$0	\$0	\$0	\$0	
NINYO & MOORE	\$755,557	\$755,557	\$748,235	\$2,677	99.03%
	\$755,557	\$755,557	\$748,235	\$2,677	99.03%
4.09 Relocation					
UNCOMMITTED	\$15,700	\$0	\$0	\$0	
Beltmann Group, Inc.	\$7,080	\$7,080	\$851	\$0	12.02%



Measure S Bond Program
Financial Report for August 2021
Budget vs Actuals - By School and Budget Category with Vendor Detail

QSS Data thru 8/31/2021

	Budget	Contracted to Date	Expended to Date	Quarterly Expense Jul '21 - Sep '21	% Expended
ULINE INC	\$1,860	\$1,860	\$702	\$0	37.75%
	\$24,640	\$8,940	\$1,553	\$0	6.30%
4.10 Labor Compliance					
UNCOMMITTED	\$0	\$0	\$0	\$0	
	\$0	\$0	\$0	\$0	
4.11 Preliminary Testing (Hazmat, Topo, Geo, etc)					
UNCOMMITTED	\$1,657	\$0	\$0	\$0	
CALIFORNIA GEOLOGICAL SURVEY (Geology and Seismology Review)	\$3,600	\$3,600	\$3,600	\$0	100.00%
ENVIRONMENTAL NETWORK CORPORATION	\$19,215	\$19,215	\$19,085	\$0	99.32%
LEIGHTON CONSULTING INC (Geotechnical Engineering)	\$20,000	\$20,000	\$16,549	\$0	82.75%
PSOMAS	\$27,000	\$27,000	\$21,034	\$0	77.90%
RMA GROUP (dba SITSCAN)	\$53,125	\$53,125	\$44,890	\$0	84.50%
SPECTRUM FIRE PROTECTION (Fire Hydrant Flow Test)	\$1,000	\$1,000	\$1,000	\$0	100.00%
	\$125,597	\$123,940	\$106,158	\$0	84.52%
4.12 Utility Connection Fees (Local Permits)					
UNCOMMITTED	\$78,806	\$0	\$0	\$0	
SOUTHERN CALIFORNIA EDISON	\$400	\$400	\$400	\$0	100.00%
STATE WATER RESOURCES CONTROL BOARD (SWRCB)	\$1,699	\$1,699	\$1,699	\$0	100.00%
	\$80,905	\$2,099	\$2,099	\$0	2.59%
4.13 FF&E (Laboratory Tables and Chairs, other)					
UNCOMMITTED	\$90,622	\$0	\$0	\$0	
CDW GOVERNMENT INC (Parts for IP Camera Systems)	\$59,662	\$65,624	\$0	\$0	0.00%
CULVER-NEWLIN INC	\$12,359	\$12,359	\$12,359	\$0	100.00%
INTER-PACIFIC INC	\$7,325	\$7,325	\$7,325	\$0	100.00%
SIERRA SCHOOL EQUIPMENT COMPANY	\$485,250	\$485,250	\$0	\$0	0.00%
TURTLE STORAGE dba AMERICAN BICYCLE CO	\$6,871	\$6,871	\$6,871	\$0	100.00%
VWR INTERNATIONAL LLC	\$47,922	\$52,714	\$47,922	\$39,049	100.00%
	\$710,011	\$630,143	\$74,477	\$39,049	10.49%
4.14 Legal Counsel					
UNCOMMITTED	\$33,146	\$0	\$0	\$0	
	\$33,146	\$0	\$0	\$0	0.00%
5. Contingency					
5.01 Construction Contingency					
UNCOMMITTED	\$1,135,815	\$0	\$0	\$0	
	\$1,135,815	\$0	\$0	\$0	0.00%
5.02 Project Contingency					
UNCOMMITTED	\$7,805,272	\$0	\$0	\$0	
	\$7,805,272	\$0	\$0	\$0	0.00%



Measure S Bond Program
Financial Report for August 2021
Budget vs Actuals - By School and Budget Category with Vendor Detail

QSS Data thru 8/31/2021

	Budget	Contracted to Date	Expended to Date	Quarterly Expense Jul '21 - Sep '21	% Expended
Total 394-9520 Villa Park HS Science Center (DSA 04-117022)	\$38,269,887	\$28,366,095	\$19,953,626	\$2,512,783	52.14%
394-9520 Villa Park HS Interim Housing (DSA 04-116788)					
1. Design Cost					
1.01 Architect					
UNCOMMITTED	\$0	\$0	\$0	\$0	
LPA INC	\$70,000	\$70,000	\$70,000	\$0	100.00%
	\$70,000	\$70,000	\$70,000	\$0	100.00%
2. Construction Cost					
2.01 Construction					
UNCOMMITTED	\$0	\$0	\$0	\$0	
ANGELES CONTRACTOR, INC	\$1,074,556	\$1,074,556	\$1,074,556	\$0	100.00%
	\$1,074,556	\$1,074,556	\$1,074,556	\$0	100.00%
2.02 OFCI and Other Construction					
UNCOMMITTED	\$0	\$0	\$0	\$0	
ACCO ENGINEERED SYSTEMS INC	\$36,527	\$36,527	\$36,527	\$0	100.00%
	\$36,527	\$36,527	\$36,527	\$0	100.00%
4. Construction Support Costs					
4.01 Rental					
UNCOMMITTED	\$1	\$0	\$0	\$0	
ELITE MODULAR LEASING & SALES INC	\$567,326	\$567,326	\$499,726	\$0	88.08%
	\$567,327	\$567,326	\$499,726	\$0	88.08%
4.05 DSA Review Fees					
UNCOMMITTED	\$0	\$0	\$0	\$0	
DIVISION OF STATE ARCHITECT	\$24,163	\$24,163	\$24,163	\$0	100.00%
	\$24,163	\$24,163	\$24,163	\$0	100.00%
4.07 DSA Inspection (IOR)					
UNCOMMITTED	\$0	\$0	\$0	\$0	
BPI INSPECTION SERVICE	\$43,265	\$43,265	\$43,265	\$0	100.00%
	\$43,265	\$43,265	\$43,265	\$0	100.00%
4.08 DSA Construction Phase Testing (LOR)					
UNCOMMITTED	\$0	\$0	\$0	\$0	
NINYO & MOORE	\$41,908	\$41,908	\$41,908	\$0	100.00%
	\$41,908	\$41,908	\$41,908	\$0	100.00%
4.09 Relocation					
UNCOMMITTED	\$0	\$0	\$0	\$0	
Beltmann Group, Inc.	\$4,640	\$4,640	\$4,640	\$0	100.00%
	\$4,640	\$4,640	\$4,640	\$0	100.00%



Measure S Bond Program
Financial Report for August 2021
Budget vs Actuals - By School and Budget Category with Vendor Detail

QSS Data thru 8/31/2021

	Budget	Contracted to Date	Expended to Date	Quarterly Expense Jul '21 - Sep '21	% Expended
Total 394-9520 Villa Park HS Interim Housing (DSA 04-116788)	\$1,862,385	\$1,862,385	\$1,794,785	\$0	96.37%
394-9520 Villa Park HS Parking and Drop Off (DSA 04-118521)					
1. Design Cost					
1.01 Architect					
UNCOMMITTED	\$0	\$0	\$0	\$0	
LPA INC	\$107,305	\$107,305	\$59,506	\$0	55.45%
	\$107,305	\$107,305	\$59,506	\$0	55.45%
2. Construction Cost					
2.01 Construction					
UNCOMMITTED	\$0	\$0	\$0	\$0	
ANGELES CONTRACTOR, INC	\$2,750,000	\$2,750,000	\$2,594,435	\$0	94.34%
	\$2,750,000	\$2,750,000	\$2,594,435	\$0	94.34%
4. Construction Support Costs					
4.05 DSA Review Fees					
UNCOMMITTED	\$5,233	\$0	\$0	\$0	
DIVISION OF STATE ARCHITECT	\$37,450	\$37,450	\$37,450	\$0	100.00%
	\$42,683	\$37,450	\$37,450	\$0	87.74%
4.06 Postage, Printing & Advertising					
UNCOMMITTED	\$0	\$0	\$0	\$0	
AMERICAN REPROGRAPHICS CO LLC	\$476	\$476	\$476	\$0	100.00%
	\$476	\$476	\$476	\$0	100.00%
4.07 DSA Inspection (IOR)					
UNCOMMITTED	\$0	\$0	\$0	\$0	
BPI INSPECTION SERVICE	\$44,880	\$44,880	\$40,264	\$190	89.71%
	\$44,880	\$44,880	\$40,264	\$190	89.71%
4.08 DSA Construction Phase Testing (LOR)					
UNCOMMITTED	\$0	\$0	\$0	\$0	
NINYO & MOORE	\$83,024	\$83,024	\$75,273	\$10,441	90.66%
	\$83,024	\$83,024	\$75,273	\$10,441	90.66%
Total 394-9520 Villa Park HS Parking and Drop Off (DSA 04-118521)	\$3,028,369	\$3,023,136	\$2,807,404	\$10,631	92.70%
394-9520 Villa Park HS Phase II (DSA 04-119694)					
1. Design Cost					
1.01 Architect					
UNCOMMITTED	\$0	\$0	\$0	\$0	
LPA INC	\$1,877,000	\$1,877,000	\$993,739	\$58,258	52.94%
	\$1,877,000	\$1,877,000	\$993,739	\$58,258	52.94%



Measure S Bond Program

Financial Report for August 2021

Budget vs Actuals - By School and Budget Category with Vendor Detail

QSS Data thru 8/31/2021

	Budget	Contracted to Date	Expended to Date	Quarterly Expense Jul '21 - Sep '21	% Expended
3. Program and Construction Management					
3.01 Program Management Fees					
UNCOMMITTED	\$262,181	\$0	\$0	\$0	
CUMMING CONSTRUCTION MGMT INC	\$57,949	\$57,949	\$57,949	\$609	100.00%
	\$320,130	\$57,949	\$57,949	\$609	18.10%
3.02 Construction Management Fees					
UNCOMMITTED	\$17,365	\$0	\$0	\$0	
CORDOBA CORPORATION	\$206,396	\$206,396	\$63,580	\$14,418	30.80%
	\$223,761	\$206,396	\$63,580	\$14,418	28.41%
4. Construction Support Costs					
4.03 Commissioning					
UNCOMMITTED	\$0	\$0	\$0	\$0	
P2S ENGINEERING INC	\$8,429	\$8,429	\$1,540	\$1,540	18.27%
	\$8,429	\$8,429	\$1,540	\$1,540	18.27%
4.05 DSA Review Fees					
UNCOMMITTED	\$0	\$0	\$0	\$0	
DIVISION OF STATE ARCHITECT	\$188,750	\$188,750	\$188,750	\$0	100.00%
	\$188,750	\$188,750	\$188,750	\$0	100.00%
4.06 Postage, Printing & Advertising					
UNCOMMITTED	\$0	\$0	\$0	\$0	
AMERICAN REPROGRAPHICS CO LLC	\$8,000	\$8,000	\$0	\$0	0.00%
	\$8,000	\$8,000	\$0	\$0	0.00%
4.11 Preliminary Testing (Hazmat, Topo, Geo, etc)					
UNCOMMITTED	\$1,657	\$0	\$0	\$0	
ENVIRONMENTAL NETWORK CORPORATION	\$10,860	\$10,860	\$4,640	\$0	42.73%
NINYO & MOORE	\$58,576	\$58,576	\$53,223	\$28,576	90.86%
PSOMAS	\$26,550	\$26,550	\$26,550	\$0	100.00%
	\$97,643	\$95,986	\$84,413	\$28,576	86.45%
Total 394-9520 Villa Park HS Phase II (DSA 04-119694)	\$2,723,713	\$2,442,510	\$1,389,971	\$103,400	51.03%
394-TBD Villa Park HS Science Center Unallocated Funds F22					
5. Unallocated Bond Funds					
5.04 Unallocated Bond Funds					
UNCOMMITTED	\$1,192,646	\$0	\$0	\$0	
	\$1,192,646	\$0	\$0	\$0	0.00%
Total 394-TBD Villa Park HS Science Center Unallocated Funds F22	\$1,192,646	\$0	\$0	\$0	0.00%



Measure S Bond Program

Financial Report for August 2021

Budget vs Actuals - By School and Budget Category with Vendor Detail

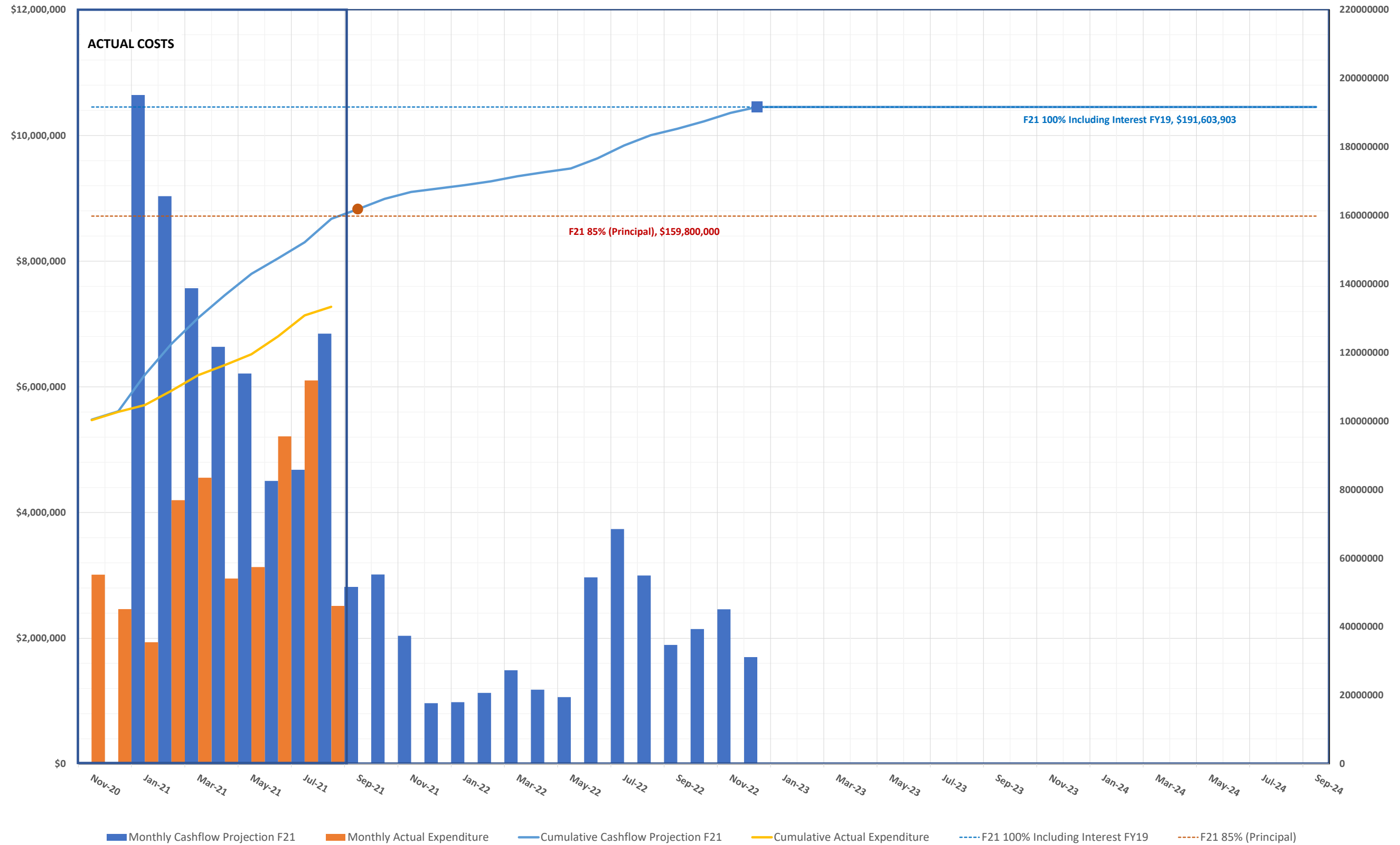
QSS Data thru 8/31/2021

	Budget	Contracted to Date	Expended to Date	Quarterly Expense Jul '21 - Sep '21	% Expended
394-9520 Villa Park Unallocated Funds F21					
4. Construction Support Costs					
4.15 Miscellaneous Fees					
UNCOMMITTED	\$0	\$0	\$0	\$0	
OUSD COST OF INTEREST DISTRIBUTION	\$20,426	\$20,426	\$20,426	\$0	100.00%
	\$20,426	\$20,426	\$20,426	\$0	100.00%
5. Program Reserve					
5.03 Interest Earned - Reserve					
UNCOMMITTED	\$0	\$0	\$0	\$0	
	\$0	\$0	\$0	\$0	
Total 394-9520 Villa Park Unallocated Funds F21	\$20,426	\$20,426	\$20,426	\$0	100.00%
394-TBD Villa Park Unallocated Funds F22					
5. Unallocated Bond Funds					
5.04 Unallocated Bond Funds					
UNCOMMITTED	\$25,538,287	\$0	\$0	\$0	
	\$25,538,287	\$0	\$0	\$0	0.00%
Total 394-TBD Villa Park Unallocated Funds F22	\$25,538,287	\$0	\$0	\$0	0.00%
Villa Park High School	\$72,698,662	\$35,777,501	\$26,029,161	\$2,626,814	35.80%



3.2 CASH FLOW PROJECTIONS

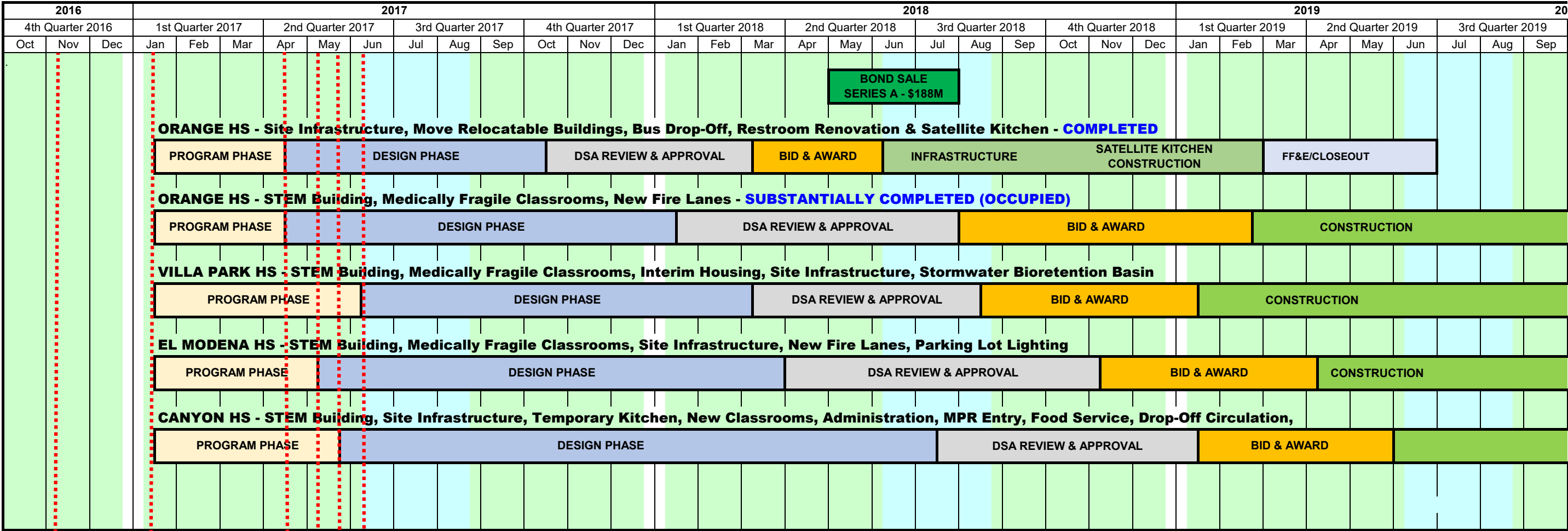
MEASURE S BOND PROGRAM - Series A 2018 CASH FLOW PROJECTION (Phase I and II)
Actual Costs thru August 31, 2021, *NOT INCLUDING ACCRUALS PENDING PAYMENT*
Fund 21 Planned Costs Projected as of December 31, 2020



4.0 PROGRAM SUMMARY SCHEDULE



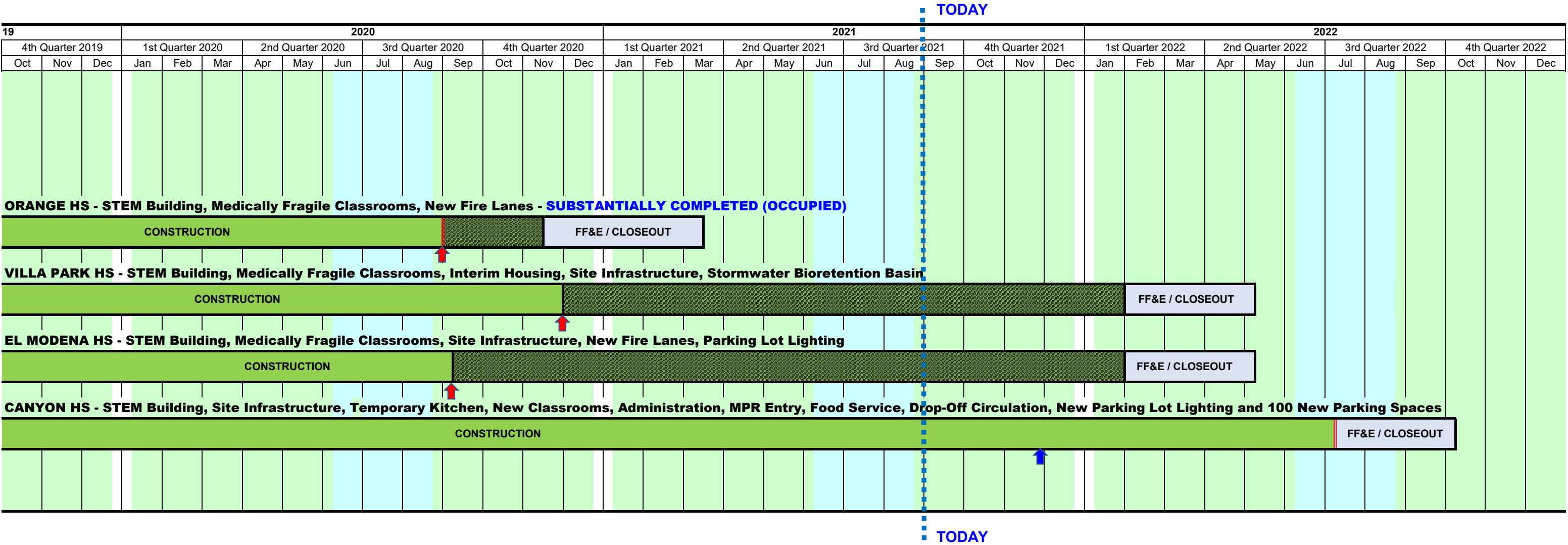
MEASURE S BOND PROGRAM - PHASE I: SCHEDULE SUMMARY



- Villa Park HS Schematic Design & Budget Board Approved 6/8/17
- Canyon HS Schematic Design & Budget Board Approved 5/25/17
- El Modena HS Schematic Design & Budget Board Approved 5/11/17
- Orange HS Schematic Design & Budget Board Approved 4/13/17
- Program Manager Starts Work 1/17/17
- Bond Measure S Passes by 62% on 11/8/16



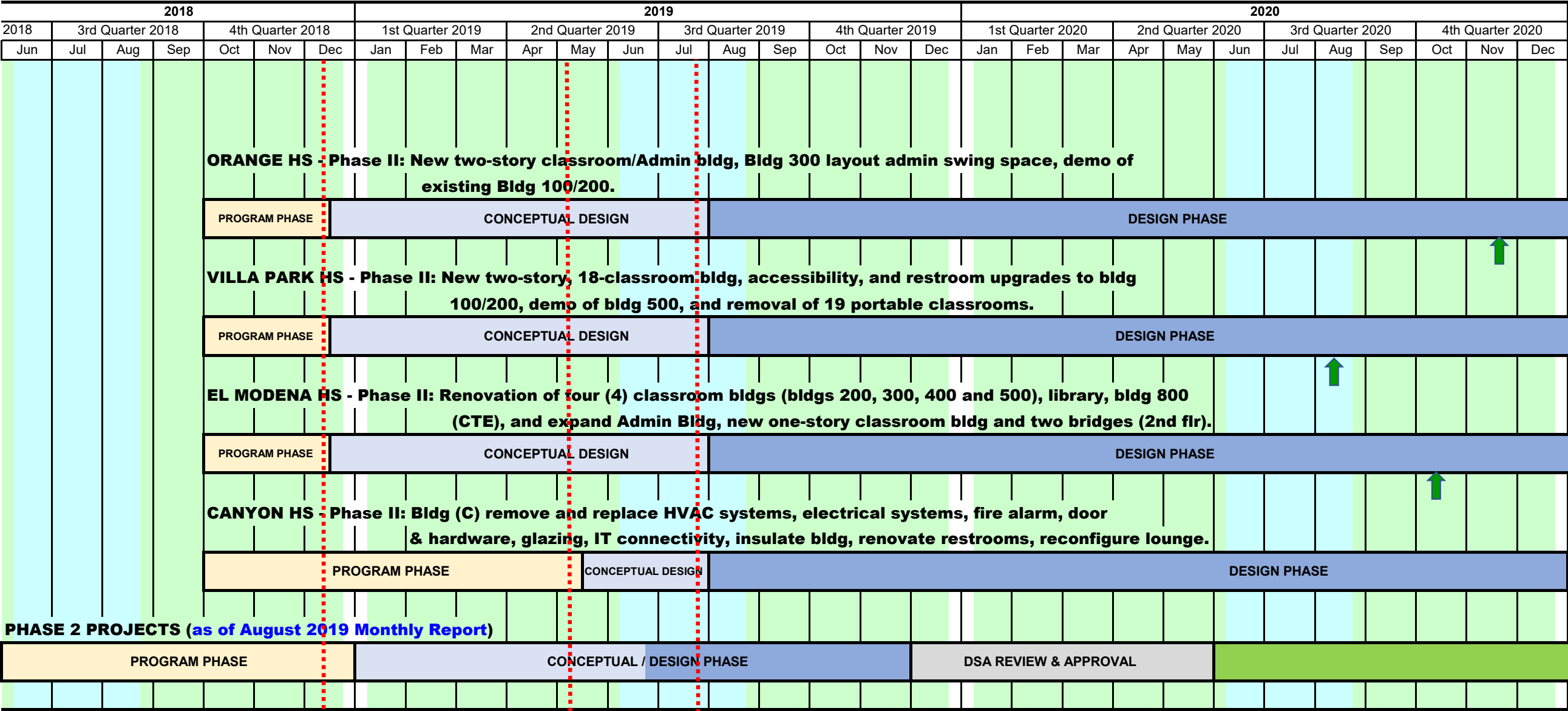
MEASURE S BOND PROGRAM - PHASE I: SCHEDULE SUMMARY



- SUMMER BREAK
- There is a date under legal negotiation (see monthly report) that may extend this substantial completion date (*the dashed section is the extension under review*).
- There has been a Substantial Completion date change approved by the Board of Education (*see under specific project for the Change Order # referenced*).
- STEM Building Substantial Completion (Scheduled)



MEASURE S BOND PROGRAM - PHASE II: SCHEDULE SUMMARY



SUMMER BREAK

Conceptual Design Board Approved 12/13/18

Conceptual Design Board Approved 5/9/19 for Canyon HS

Phase II Design & Budget Board Approved 7/25/19

Orange HS

El Modena HS

Villa Park HS

Orange HS

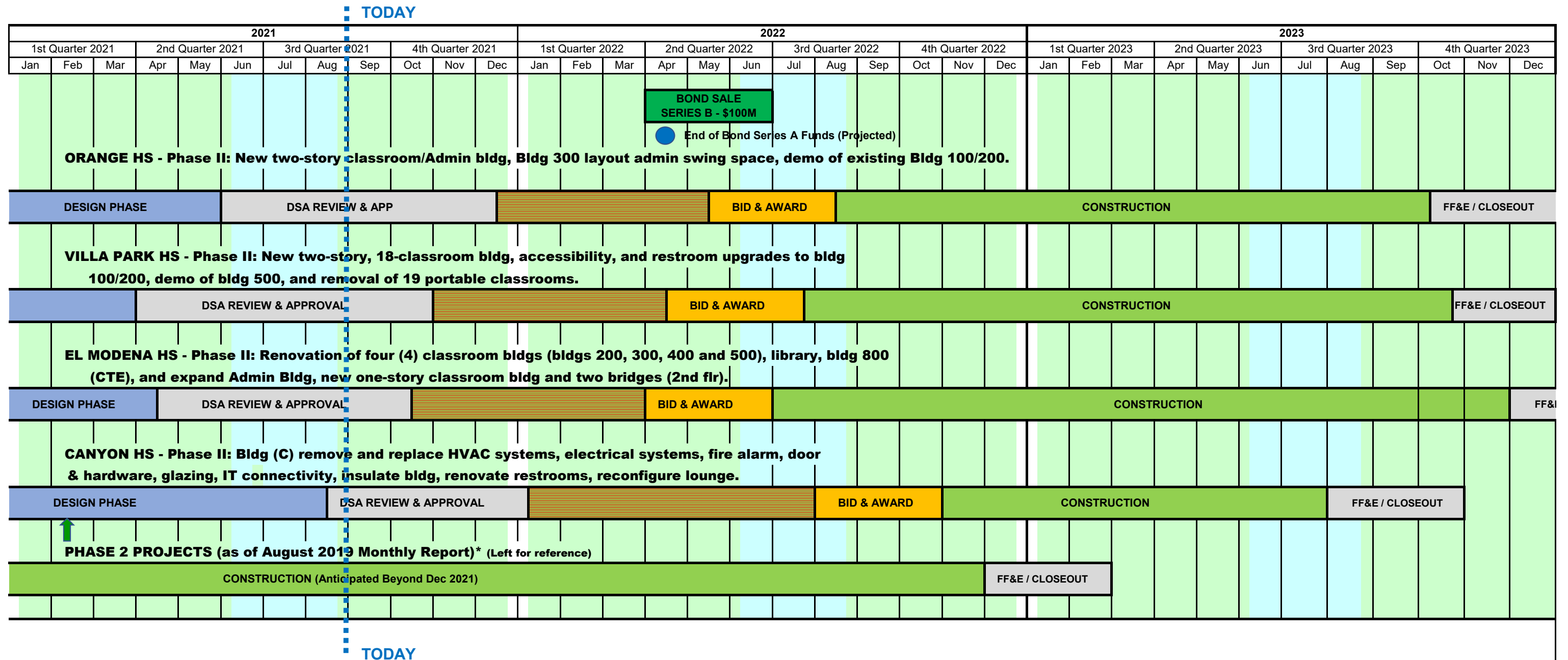
El Modena HS

Villa Park HS

Canyon HS



MEASURE S BOND PROGRAM - PHASE II: SCHEDULE SUMMARY



SUMMER BREAK



EXTENDED CONSTRUCTION START
(for Phase II Bond Award)



Phase II Design Document & Construction Estimate Board Approval (Completed)

Orange HS - November 19, 2020 Board Meeting

El Modena HS - October 15, 2020 Board Meeting

Villa Park HS - August 13, 2020 Board Meeting

Canyon HS - February 11, 2021 Board Meeting

Board of Education

Kathryn A. Moffat, President
Andrea Yamasaki, Vice-President
Kris Erickson, Clerk
Rick Ledesma
John Ortega
Ana Page
Angie Schlueter-Rumsey

Gunn Marie Hansen, Ph.D.
Superintendent

David A. Rivera
**Assistant Superintendent/CBO
Business Services**

Scott Harvey
**Senior Executive Director
Administrative Services**



Facilities & Planning Department
Measure S Bond Program
726 W. Collins Avenue
Orange, CA 92867
T: (714) 628-4500