



KIRBY SCHOOL

SCHOOL PROFILE 2021-2022

Christy Hutton
Head of School

Joe Poirot
Assistant Head of School

Lis Bensley
Academic Dean

Emily Lamoureux '00
Director of Admissions

Amy Hemmert
International Dean
and Admissions

Cathy Conley
College Counselor

Stephanie Dekking
Registrar

MISSION STATEMENT

Through intellectual challenge in a responsive environment, Kirby empowers students to shape their futures with confidence. Our students learn to think critically, develop their creativity, and engage diverse communities with thoughtfulness and respect.

Core Beliefs:

- Offering academic challenge across the disciplines at all age levels maximizes the growth of each Kirby student
- Kirby's inspiring faculty cultivate and model lifelong curiosity
- Our commitment to small class sizes enables us to be responsive to every learner
- Student confidence is supported by our close-knit culture of kindness and mutual respect
- Young people who have an active voice in their own education and community will be motivated and enthusiastic learners
- When adolescents are taught and encouraged to lead healthy, balanced lives, their learning capacity and happiness increase
- Development of creativity and adaptability are crucial to a growth mindset and enhanced through exploration of a wide variety of arts, electives, and experiences
- Collaboration among parents, faculty, and students is fundamental to student success
- Culturally responsive education is a conscious, ever-deepening process of recognizing, exploring, and embracing our differences

THE SCHOOL

Kirby School is an independent, co-educational day school for grades 6 through 12 and is a member of, and is accredited by, the California Association of Independent Schools, the National Association of Independent Schools, and the Western Association of Schools and Colleges. Kirby's CEEB Code is 053290. Established in 1994, Kirby was named for a Santa Cruz pioneer who devoted her life to education, freedom, and enfranchisement. The School was founded on the belief that students who are respected and encouraged will exhibit great enthusiasm for learning and achieve at the highest levels.

FACULTY

Over 50 percent of Kirby's 36 faculty members hold advanced degrees, including 3 Doctorates and 16 Master's Degrees. Fine and performing arts teachers have augmented their formal degrees with extensive professional experience.

STUDENTS

Kirby enrolls 209 students: 70 in the middle school (6-8) and 139 in the high school (9-12). The graduating Class of 2021 had 37 students. Kirby's average class size is 12. The school admits students on their ability to be successful in a rigorous academic environment without regard to race, color, creed, gender, sexual orientation, religion, physical disability, national origin or other legally protected status.

TUITION ASSISTANCE

Kirby's commitment to tuition assistance which is designed to support a highly qualified and diverse student body, is a fundamental part of the school's mission. For the 2021-2022 academic year, 31% of Kirby's students received tuition assistance, totaling \$1,328,775.



425 Encinal Street
Santa Cruz, CA 95060
Phone: 831.423.0658
Fax: 831.423.0679
kirby.org



Academic Program

HIGH SCHOOL COURSE OFFERINGS AND GRADUATION REQUIREMENTS

Kirby's graduation requirements exceed the "a-g" admissions requirements of the University of California system. Honors and AP courses are listed in **bold**. Semester-long courses are marked with an *.

ENGLISH

(4 years required)

English 9

English 10

English 11 and English 12 choices:

**AP Multicultural English Literature
& Composition**

Applied Ethics *

Creative Writing *

Graphic Novels *

History, Literature, Art: Indigenous
US Literature *

History, Literature, Art: South Africa *

Queer Voices in Literature *

Personal Narratives *

HISTORY

(3 years required)

History 9: World History of the Middle
Ages

History 10 or **Honors History 10**: Modern
World History

US History or **Honors US History
Practicum**

AP US Government

Macroeconomics *

Government Cabinet (1 unit/sem)

LANGUAGES

(2 years of one language required)

American Sign Language 1, 2, 3 & 4

Latin 1, 2, 3 & **Honors Latin: Special
Topics**

Spanish 1, 2, 3, 4 & **Honors Spanish 5**

MATHEMATICS

(3 years required)

Algebra 1

Geometry

Algebra 2

Pre-Calculus

AP Calculus A/B

AP Calculus B/C

AP Statistics

Honors Multivariable Calculus

Financial Mathematics with Advanced
Algebra Applications

LABORATORY SCIENCES

(3 years required)

Biology

Chemistry

Forensic Chemistry

Human Biology *

Marine Biology *

Honors Advanced Biology

Honors Physics

Honors Environmental Science

AP Physics

COMPUTER SCIENCE ELECTIVES

Intro to Programming

Introduction to Quantum Computation

Music Technology: Mixing *

Music Technology: Recording *

Yearbook (1 unit/sem)

PERFORMING ARTS

(1 year required)

Chorus (1 unit/sem)

Chamber Choir (by audition)

Jazz Choir (by audition) (1 unit/sem)

String Methods (1 unit/sem)

Orchestra (by audition) (1 unit/sem)

Jazz Ensemble (by audition) (1 unit/sem)

Drama 1 & 2

Intro to Dance

Dance Company (by audition) (1 unit/
sem)

AP Music Theory

VISUAL ARTS

(1 year required)

Art 1: Foundation

Art 2: Intermediate 2D Art

Photography

Photo: Portfolio Preparation

FITNESS, WELLNESS & HUMAN DEV.

Health and Wellness * or Health and
Wellness A * (1 semester required)

High School Fitness * (2 units/sem) or
Contract Fitness * (1 unit/sem) (4
units total required)

Psychology *



Academic Achievement

INTENSIVE ACADEMIC PATHS

In addition to Honors and AP courses, Kirby offers four elective high school Intensive Paths for students wishing to pursue in-depth study in a specific academic or artistic field. All paths meet or exceed the 94-unit graduation requirement.

SCIENCE AND TECHNOLOGY INTENSIVE PATH (STIP)

STIP provides a program for students interested in intensive study of science, math, and/or computer sciences, with the goal of reaching a high level of mastery and positioning themselves for advanced college-level work. STIP students' coursework includes four years of laboratory science, four years of mathematics (including Pre-calculus), a research project or internship, and additional elective units in science, math, and computer science.

HUMANITIES INTENSIVE PATH (HIP)

HIP enables students who are passionate about history, writing, and/or literature to explore those areas in depth. HIP coursework includes five years of history or English and culminates in a focused senior project advised by a faculty mentor.

LANGUAGES INTENSIVE PATH (LIP)

LIP offers students intensive study of foreign languages and cultures. LIP students use their elective options for focused study in world cultures, including four years of one foreign language and two additional years in a second language.

ARTS INTENSIVE PATH (AIP)

AIP emphasizes the study of fine or performing arts. Under the mentorship of a faculty advisor, AIP students choose a general arts program or concentrated study in a specific discipline, supported by a total of 18 additional units in the arts and a creative, culminating project presented in the senior year.

GRADING AND CLASS RANK

Grade point average (GPA) is calculated using all courses. In high school, final GPAs are cumulative from the fall semester of freshman year. For transfer students, all courses from the previous school are used (except when transferring from an International School). Advanced Placement, Honors, and University of California transferable college-level courses are weighted. Class Rank: Students are not ranked.

ACT AND SAT TEST SCORES

SAT REASONING TEST SCORES
AVERAGE COMBINED SCORES (OUT OF 1600)

Year	2018	2019	2020	2021
KIRBY	1310	1332	NA	1402*
NATIONAL	1068	NA	NA	NA

SAT Reasoning combined scores include math, critical reading and writing scores.

* Only 10% of the class of 2021 were able to take the SAT. This average combined score does not reflect a majority of Kirby Students.

ACT REASONING TEST SCORES
AVERAGE SCORES

Year	2018	2019	2020	2021
KIRBY	29	26*	NA	NA**
NATIONAL	21	NA	NA	NA

* Scores are from tests taken through June 2019. Scores from tests taken after June 2019 are not available at the time of printing.

** No Kirby students from the Class of 2021 took the ACT.

AP SCORES

Of the 48 students who took AP exams in the Spring of 2021, 79% scored a 3 or above.



College Admissions

Kirby graduates have matriculated at the following schools in the past 5 years:

American University	Mills College	Syracuse University
Bard College	Muhlenberg College	The New School
Bennington College	New York University	Tufts University
Berklee College of Music	Northeastern University	Tulane University
Boston University	Northern Arizona University	University of British Columbia
Brown University	Northwestern University	University of California, Berkeley
Cabrillo College	Oberlin College	University of California, Davis
California State Polytechnic University, San Luis Obispo	Occidental College	University of California, Irvine
Carleton College	Oregon State University	University of California, Los Angeles
Case Western Reserve University	Parsons School of Design	University of California, Riverside
Clark University	Pitzer College	University of California, San Diego
Colgate University	Portland State Honors Program	University of California, Santa Barbara
College of Wooster	Pratt Institute	University of California, Santa Cruz
Colorado College	Princeton University	University of Colorado, Boulder
Colorado School of Mines	Purdue University	University of Illinois, Chigago
Colorado State University	Reed College	University of Illinois, Urbana-Champaign
Columbia College Chicago	Regis University	University of Oregon, Honors College
Columbia University	Rensselaer Polytechnic Institute	University of the Pacific
Cornell University	Rhode Island School of Design	University of Pittsburgh
Delft University of Technology	San Diego State University	University of Puget Sound
Denison University	San Jose State University	University of Rochester
Emerson College	Santa Barbara City College	University of San Francisco
Georgia Institute of Technology	Santa Clara University	University of South Wales
Gonzaga	Savannah College of Arts and Design	University of Southern California
Goucher College	School of Visual Arts	University of St. Andrews
Hampshire College	Scripps College	University of Redlands
Harvey Mudd College	Seattle University	University of Washington
Johns Hopkins University	Skidmore College	University of Wisconsin
Lewis and Clark College	Smith College	Vassar
Long Island University	Southern Oregon University	Washington University, St. Louis
Loyola Marymount University	St. Olaf College	Wellesley College
Macalester College	Stanford University	Wesleyan University
Menlo College	SUNY at Purchase	Western Washington University Honors Program
	Swarthmore College	

6th Grade Sample Schedule 2021-22



At Kirby, our program is based on current educational and neurological research. It is designed to be adjusted to fit the needs and interests of each child. Our curriculum supports growth in core academics as well as cultivates capacity for listening, empathy, and respectful communication. We challenge each student, not overwhelm them.

Kirby School Weekly Schedule 2021-22

MONDAY	TUESDAY	WEDNESDAY	THURSDAY	FRIDAY
8am →	8am →	8am →	8am →	8am →
Tutorial (25)	Tutorial (25)	Tutorial (25)	Tutorial (25)	Tutorial (25)
9am →	9am →	9am →	9am →	9am →
Mathematical Problem Solving 9:00am - 10:15am	STEAM 9:00am - 10:15am	Mathematical Problem Solving 9:00am - 10:15am	Study Hall 9:00am - 10:15am	STEAM 9:00am - 10:15am
10am →	10am →	10am →	10am →	10am →
Minecraft Club 10:20am - 10:50am	Geography 10:20am - 11:35am	ASM in Advisory (30) 10:20am - 10:50am	Earth Science 10:20am - 11:35am	Advisory (30) 10:20am - 10:50am
11am →	11am →	11am →	11am →	11am →
Social Emotional Learning & Physical Health 10:55am - 12:10pm	Lunch (50) 11:35am - 12:25pm	Social Emotional Learning & Physical Health 10:55am - 12:10pm	Lunch (50) 11:35am - 12:25pm	Geography 10:55am - 12:10pm
12pm →	12pm →	12pm →	12pm →	12pm →
Lunch (50) 12:10pm - 1:00pm	English 12:25pm - 1:40pm	Lunch (50) 12:10pm - 1:00pm	English 12:25pm - 1:40pm	Lunch (50) 12:10pm - 1:00pm
1pm →	1pm →	1pm →	1pm →	1pm →
Study Hall 1:00pm - 2:15pm	Co-curricular / Office Hours 1:45pm - 2:15pm	Performing Arts 1:00pm - 2:15pm	Co-curricular / Office Hours 1:45pm - 2:15pm	Performing Arts 1:00pm - 2:15pm
2pm →	2pm →	2pm →	2pm →	2pm →
Earth Science 2:20pm - 3:35pm	Office Hours (30) 2:15pm - 2:45pm	Study Hall 2:20pm - 3:35pm	Office Hours (30) 2:15pm - 2:45pm	Study Hall 2:20pm - 3:35pm
3pm →	3pm →	3pm →	3pm →	3pm →
	Staff Meetings/PD 1 (70) 2:50pm - 4:00pm		Staff Meetings/PD 2 (70) 2:50pm - 4:00pm	
4pm →	4pm →	4pm →	4pm →	4pm →

In response to the evolving COVID-19 pandemic, Kirby School has adapted its schedule to optimize student attention and support learners. Beyond in-person classes, Study Halls, Tutorials and Office Hours create opportunities for independent practice time (IPT) during the day and a robust amount of contact time for students to receive differentiated support during the school day. Advisory periods serve as an extra layer of support and guided social opportunity to build connections and invest in our community.

What are you looking for in a school?



Diversity & Inclusivity

- ❑ Students of Color Club
- ❑ Gender Sexuality Alliance Club
- ❑ Gender Neutral Bathrooms
- ❑ DEI Internships

Visual Arts

- ❑ Darkroom photography
- ❑ Drawing, painting, ceramics, printmaking & book arts
- ❑ Portfolio preparation

Computers & IT

- ❑ Student IT Team
- ❑ Beginning & advanced computer programming

Math | Science

- ❑ Math by ability not grade level
- ❑ Advanced math electives
- ❑ Forensic chemistry, marine & human biology, advanced classes in biology, physics & chemistry

Athletics

- ❑ Competitive middle school teams
- ❑ Traditional high school teams
- ❑ Mountain Bike Club
- ❑ Sailing Club
- ❑ Ultimate Frisbee

Performing Arts

- ❑ Middle school dance & Dance Company
- ❑ Annual theatre productions
- ❑ Makeup, costumes & tech
- ❑ Improv & musical theatre

Music

- ❑ Award-winning choirs
- ❑ Orchestra & Jazz Band
- ❑ Instrument library
- ❑ Beginning strings
- ❑ Music appreciation & theory
- ❑ On-site Recording Studio

Be your best

- ❑ College-prep curriculum
- ❑ Honors & AP classes
- ❑ Design a "High School Major"
- ❑ 1:1 college counseling

Student Life

- ❑ Kind, caring & safe community
- ❑ Student Ambassador Program
- ❑ School dances & movie nights
- ❑ Spirit days & fieldtrips
- ❑ Annual grade-level class trips
- ❑ Student Council

**BRING YOUR
UNIQUE
BACKGROUND,
BELIEFS, AND
EXPERIENCES
TO OUR DIVERSE
COMMUNITY**

Nearly \$1.4M
tuition assistance
in 2021-2022

Kirby School was founded in 1994 to provide a college preparatory pathway to motivated students regardless of economic circumstances.

Sign up at kirby.org for our **Tuition Assistance Workshop** on **December 1, 2021** at **6:30pm**.

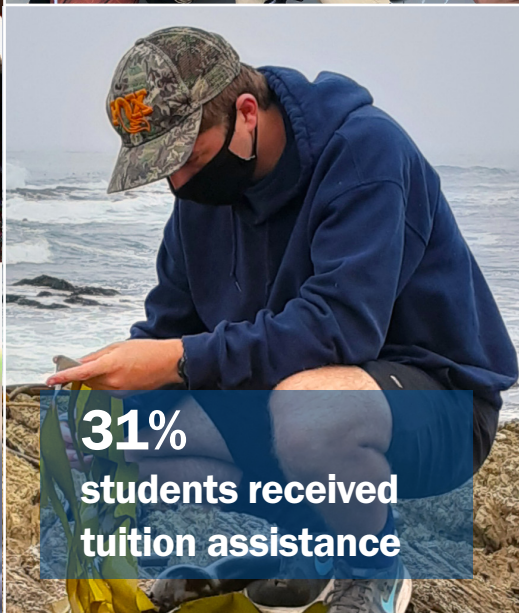
Tuition Assistance Applications for the 2022-2023 school year may be submitted starting on December 1,



\$167,964
average household
income of families



Visit kirby.org
to learn more.



31%
students received
tuition assistance



\$20,443
average tuition
assistance award

2021-22 Music



Vocal Ensembles

Chamber Choir

- Grades 10-12
- Audition & prior participation in Chorus required
- Advanced level
- Various styles & eras of music explored
- Performs at Kirby & in the greater community
- Meets UC "f" or "g" requirements

Chorus

- Grades 6-12
- No audition required
- Great for beginners who wish to learn to read music & basic singing techniques
- Meets UC "f" or "g" requirements when taken in grades 9-12

Spring Musical Production

If you're a fan of musical theatre and want to be involved in a school production, all students are encouraged to participate.

No experience is necessary.

Instrumental Ensembles

Jazz Ensemble

- Grades 8-12
- Intermediate to advanced
- Audition required
- Meets UC "f" or "g" requirements

Orchestra Ensemble

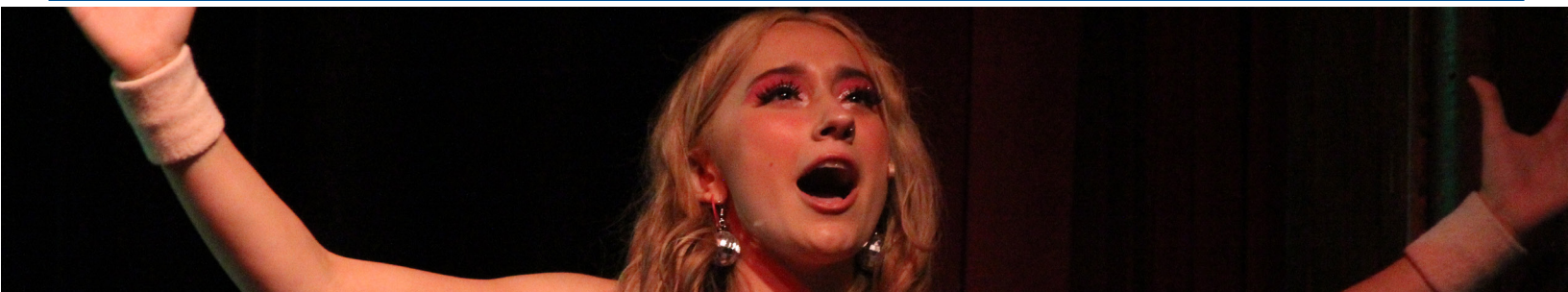
- Grades 8-12
- Intermediate to advanced
- Audition required
- Meets UC "f" or "g" requirements
- Performs at Kirby & in the community

Strings Methods

- Grades 6-9
- Beginning level - no audition
- Learn to read music & play an orchestral string instrument (provided by Kirby)

Kirby School Instrument Library

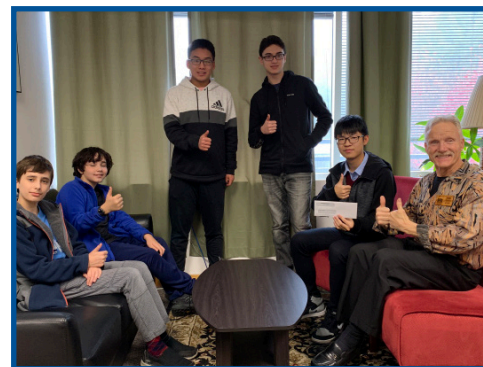
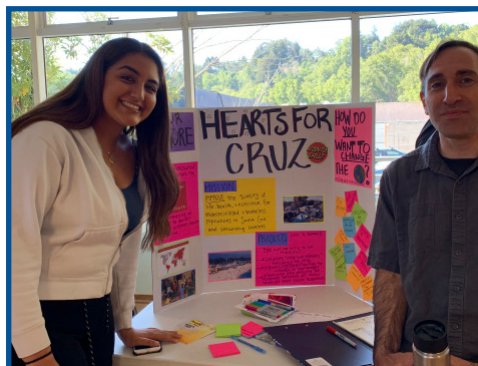
Students may rent a musical instrument at Kirby. Rentals are free and may be short- or long-term.



2021-22 Clubs



3D Printing
Accelerated Math Circle
The Acorn (non-fiction journal)
Arcade and Table Games
Black Student Union
The Blank Slate
Cheer
Chess Club
Community Involvement
Cooking
Drama and Improv Club
Dungeons and Dragons
Environmental
Ethics Bowl
Entrepreneurship
Garden
Gender Sexuality Alliance
Green Team
Interrobang (literary magazine)
Junior State of America
Strategy and Board Games
Sports Talk
Study Hall
Trending Media and Culture
Yearbook



A wide variety of arts,
electives, and experiences
enhance creative thinking
and adaptability in support
of a growth mindset.

2021-22 Athletics



Middle School

Fall

(Sept - Oct)

Girls Basketball
Cross Country

Early Winter

(Nov - Jan)

Boys Basketball

Late Winter/ Early Spring

(Feb - Mar)

Girls Volleyball
Coed Soccer

Spring

(April - May)

Boys Volleyball
Track & Field
Coed Ultimate
Frisbee

High School

Fall

(Aug - Nov)

Girls Volleyball*
Cross Country*

Winter

(Nov - Feb)

Boys Basketball*
Girls Basketball*

Spring

(Feb - May)

Track & Field*
Boys Volleyball*
Mountain Bike Racing
Coed Ultimate Frisbee
Swimming

Club Sports

1. **High School Sailing Team** (all seasons) - Kirby sailors compete through the Santa Cruz Yacht Club Scholastic Sailing Program
2. **HS & MS Coed Ultimate Frisbee Club** (fall) - does not compete
3. **HS & MS Mountain Biking Club** (spring) - does not compete
4. **HS Intramural Soccer** (winter) - does not compete
5. **HS & MS Tennis** (season TBD - does not compete)

* Kirby high school athletes compete in the Pacific Coast Athletic League within the Central Coast Section of the California Interscholastic Federation. The CCS constitution and bylaws apply.




Application Checklist

We are excited that you are considering Kirby! This checklist will walk you through the entire online admissions application process:

- ☐ **Access the Kirby Portal** online [here](#). This is where you will find everything you need to proceed with the online admissions application. Kirby will create your username, and you will initiate this being sent to you when you first access the Kirby Portal. You will be prompted to set up your own password to access the portal. Be sure to put kirby@myschoolapp.com on your “safe senders” email list in order to receive email notifications.
- ☐ **The Initial Application:**
 - ☐ Provide general student and family information
 - ☐ Upload a student photo
 - ☐ Submit the \$75 application fee
- ☐ **The Parent Statement:** You may complete this directly in the portal. It is located under the checklist section of the Admissions Progress page. Click the “Fill Out” button next to this step in the Parent Statement area of your checklist in the portal.
- ☐ **The Student Statement:** You may download and print this form in the Kirby Portal. *This must be handwritten by the student.* Once completed, scan the statement, and upload it into the portal in the Student Statement area of your checklist. Alternatively, you may photograph and send a copy of the completed statement to the Admissions Office via email, and we will upload it to the Kirby Portal for you.
- ☐ **Request Teacher Recommendations from your Current School:** You may send recommendation requests to teachers directly in the Kirby portal, via email. Recommendations should come from your student’s most recent teachers.
 - ☐ English Teacher Recommendation (required)
 - ☐ Mathematics Teacher Recommendation (required)
 - ☐ Principal or Counselor Recommendation (required)
 - ☐ Additional Recommendation for another adult who knows your child well (optional)
- ☐ **Submit Academic Records:** Please submit your student’s academic records for the last **two** school years.
 - ☐ Complete the [Academic Records Request](#) form by hand, *located in this packet*. This form is also available for download in the Kirby Portal in your checklist. Give the completed request form to your student’s school.
 - ☐ We will upload these items to your students’ application once the school sends these records. *If your student has an IEP/504 plan/ psychoeducational testing report, please scan/photograph the documents and upload them into the portal under the corresponding checklist section. Or, you may email a copy of these documents to the Admissions Office, and we will upload them for you.*
- ☐ **Interview and Writing Assessment:** Once **all** of the above documents have been received, we will contact you to set up an interview and writing assessment for your student. Please allow approximately one hour for the interview. *This is the final step in the application process. Congratulations you are finished!*
- ☐ **Admissions Notification:** You will be notified of the acceptance decision as soon as your student’s application has been reviewed by our Admissions Committee. An official letter detailing the acceptance decision will be sent in the mail as well.



Admissions Calendar

- **December 1, 2021 - Tuition Assistance App Opens**
(Scan QR Code to start an application)
- 
- **February 8, 2022 - Priority Admissions Application Deadline**
Priority consideration is given to applications received by this date. Families applying for tuition assistance must have their Admissions Application submitted by this date (the Initial Application, Parent Statement and Student Statement completed).
 - **February 17, 2022 - Tuition Assistance Application Deadline**
Tuition Assistance Applications must be submitted to FAST by this date. The Admissions Application must be received by February 8, 2022 in order for your Tuition Assistance application to be considered. Students must first be accepted to Kirby, before the Tuition Assistance Application will be reviewed.
 - **We accept students on a rolling basis all year.**
Admissions applications are reviewed throughout the admissions season. Once the Admissions Committee has made an acceptance decision, you will be notified by phone or email, and then an official letter will be sent by mail.





Tuition and Fees

2021-2022 Annual Tuition*

- Grades 6 & 7: \$32,400
- Grades 8 through 12: \$37,500

Application Fee: \$75 - Due with Admissions Application.

New Student Enrollment Fee: \$1000

Accepted students will receive an enrollment contract. This one-time fee is due with the signed contract.

Non-refundable Tuition Deposit: \$2,000

This deposit will be applied towards your annual tuition and is due with the signed contract.

* Our tuition for the 2022-23 school year will be available in January 2022.