



4K CONNECT

WSD 4K Newsletter

Mark your calendars
Curriculum Corner
Friendly Reminders
4K Spotlight -
EC & 4K Staff
The Rules Rap
Nursery Rhymes

Kara Rakowski, 4K Principal krakowsk@wausauschools.org

Program office: 714.261.0265

First Student: 715.842.2268

4K Administrative Assistant: Jess Napiwocki jnapiwoc@wausauschools.org

4K Administrative Assistant: Kellie Messman kmessman@wausauschools.org

WSD 4K and Early Childhood Program Website: http://www.wausauschools.org/schools_facilities/4_k_programming

Link to WSD E-Flyers <http://www.wausauschools.org/e-flyers> Click on the E-flyers tab to see a listing of all current school activities flyers.

Link to District Handbook: http://wausauschools.org/parents/parent_student_handbook/english

PRINCIPAL'S PIECE....

Dear Families:

What is SEFEL: We often refer to our practices in building social emotional skills as "sefel" which stands for the social emotional foundations of early learning. In our state, you may also hear this called the Pyramid Model. The Pyramid Model is an evidence-based prevention/intervention framework that prevents challenging behaviors and promotes healthy social and emotional development by supporting positive relationships, creating engaging environments, and providing concrete teaching strategies.

WHO IS TUCKER TURTLE: Tucker is our mascot for our implementation of the instruction, assessment, and family participation of social-emotional skills. Tucker teaches our students to take time to "stop," "think," and come up with a better way to do things when frustration occurs or when problem solving opportunities arise.

Our teachers in our 4K & EC Programs have advanced training in the instruction of social-emotional skills. Instruction occurs in "mini-lessons" and in natural opportunities throughout the day as students need assistance with following rules, sharing, making friends, expressing their feelings, helping others, etc. An important part of this instruction is to give students alternative positive ways to do things. For example, instead of crying when someone tries to take your toy, the student is taught to say, "Please stop." Or "Let's take turns." It is amazing to observe all these subtle teaching moments being infused throughout the day. Our students are learning social and relationship skills that are important in any school or job for the rest of their life.

CELEBRATING TUCKER: This year we will host both a virtual Tucker Turtle week and in-person Tucker Turtle Night. You are invited to join us for Tucker Turtle Family Night on Tuesday, October 28 from 6:00-7:30 pm. This event will be held outdoors at Thomas Jefferson Elementary School OR you can participate at home by completing activities shared through SeeSaw.

PARENTS AT SCHOOL: We look forward to partnering with you throughout this school year. Each month we will offer parent engagement activities that will allow you to connect with staff and learn more about what your child is learning in 4K. The skills learned during these parent engagement activities are intended to be valuable tools and strategies to build behavior/social and pre-literacy skills at home. Your child's teacher will share additional details including dates and topics - Mark your calendar and join us!!

Thank you for being partners in education!

Kara Rakowski, Wausau School District 4K Principal

MARK YOUR CALENDERS

For 4K Students at all sites

Tucker Turtle Night: September 28th @ Thomas Jefferson

Virtual Tucker Turtle Week Activities: September 27-

October 1 (shared through SeeSaw)

No School: October 27th - 29th - Professional Learning for teachers



FYI

When families and schools work together we provide the best education possible for our children!

Parents Engagement

All parents/guardians (or another family member) are invited to participate in a monthly parent engagement activity. During the "Parents connect to School" event, your child's teacher will present a short lesson or information related to the 4K curriculum. You will then get to play and work with your child to complete an activity planned by the teacher. This year these events will be held in-person outdoors or virtually. Please look for additional details and dates that will be shared by your child's teacher.

Conferences will be arranged for all parents during the month of October and November. Parents connect to school is a special time for students and their parents; for this reason, please plan to participate.

Tucker Turtle Night

Tucker Turtle Night is at Thomas Jefferson Elementary school on Tuesday, September 28 anytime between 6 am 7:30 pm (open house style). There will be games, music, dancing, chalk art, and more!

CURRICULUM CORNER

Week 1 of our Little Red Riding Hood unit began September 20

TARGETED VOCABULARY

I can use and say these words:

**grandmother, wolf, woods,
woodcutter, ax**

'I CAN'

I CAN:

hold and use a scissors

hold a book to read

tell something that happened in the story

hold a crayon the right way

find something red

find a dot

draw a line

I can repeat the "L, F, E" sound.

I can sort objects by their shapes

I can recognize a pattern

I can make small collections of 2

I can verbally count to 5 with correspondence

I can show a number representation for a group of 2 objects

I can read numbers to 2

FYI

Social Emotional Foundations of Early Learning:

Who is Tucker Turtle?

The Turtle Technique is a method of teaching young children strategies for coping with anger, disappointment, and frustration. Tucker is our "mascot" for 4K as he helps teach about being a good friend, identifying our feelings, controlling strong feelings/anger, and finding solutions to problems. Join us at our Parents at School and Tucker Turtle Night to learn more about Tucker!



TUCKER'S FRIENDLY REMINDERS



Reminder... Breakfast or lunch is not served to 4K students at the 4K academies (Hawthorn, Jefferson, Jones, Riverview). Your child does receive a snack and milk/water while at school.

Please remember to call your 4K office if your child is going to be absent from school due to illness or another reason. When you call in, please give the reason for the absence. Please also call First Student at 715.842.2268 to let them know your child will not be riding the bus that day.

G.D Jones - 715.261.0265 Jess Napiwocki
Hawthorn - 715.261.0055 Kellie Messman
Jefferson - 715.261.0185 Amber Channel
Riverview - 715.261.0040 Becky Olson

AM classes arrive at 8:20 and begin at 8:25 A.M., dismissal at 11:00 A.M.
PM classes arrive at 11:35 and begin at 11:40 A.M., dismissal at 2:15 P.M.

Teacher Information



Federal law requires that we share with you the qualifications of the teachers at the WSD 4K and Early Childhood Program. All of our teachers have at least a bachelor's degree and are licensed by the Wisconsin Department of Public Instruction. Teaching assignments are commensurate with their certification. If you would like more information about the qualifications of the teachers at WSD 4K and Early Childhood Programs, please contact Kara Rakowski at 715.261.0266 or krakowski@wausauschools.org



TUCKER TURTLE'S EVENTS

WSD 4K and Early
Childhood Programs
invite you to our

WHEN:
TUESDAY,
SEPT. 28TH
(RAIN DATE 9/30)

TIME: 6-7:30PM

ANNUAL TUCKER TURTLE NIGHT

*Where: Thomas Jefferson
Elementary School*
This event will be held outdoors



*JOIN US FOR
A NIGHT OF:
DANCING
ART
FUN*

*Don't forget to
say Hello to
Tucker Turtle!!*



TUCKER TURTLE PARENT TIPS

Rules and Expectations

4K Social Emotional Learning Targets - September

- I can tell my teacher if someone is following the rules
- I can tell my teacher what rule my teacher or I should use

Ideas to Practice at Home

- **Follow Directions:** After you give your child a direction and they follow through, say to them: "thank you, you followed my direction!"
- **Feet and Hands to Yourself:** When your child is playing with another child, reinforce appropriate behavior by saying "I like how you are keeping your feet and hands to yourself and being a good friend"
- **Take Care of Your Things:** When it's almost time for play time to be done, give a warning, "in 2 minutes we will clean up the toys". When it's time to clean up say "5,4,3,2,1, play time is all done, time to clean up". After the toys are cleaned up say "you did a great job taking care of your things, thank you!"
- **Small Voices Inside, Tall Voices Outside:** When reading books together say "we use small voices when we are reading"
- **Work Together Get Along and Respect Each Other:** After a meal, have everyone chip in to help clean up, say "this is how we work together, get along, and respect each other at home"

The Rules



Follow directions.



Feet and hands to yourself.



Take care of your things.



Small voices inside,
tall voices outside.



Work together,
be kind, and respect
each other.



The Rules Rap

Rap to the Rules in 4K!

The WSD 4K Programs are proud to announce that they have adopted a program-wide model known as the Teaching Pyramid for helping children learn social skills, friendship skills, and appropriate behavior. All of the program staff will be working together to teach your child to make good choices through the following behavior expectations (adapted from Sing along and Read Along with Dr. Jean, The Rules rap, 2007 Dr. Jean Feldman, Creative Teaching Press, Inc.).

Follow directions

- Feet and hands to yourself
- Small voices inside, tall voices outside
- Take care of your things
- Work together, be kind and respect each other

When you visit a 4K classroom, you will see the many ways that we will be helping your child learn and practice age-appropriate behavior and social skill expectations. We are excited about this effort and look forward to working with you and your child.

In addition, we will want to work in partnership with you to make sure children can learn to use these expectations at home and in school. you can effectively use the same rules at home. Each week your child's teacher will be sending you tips on how you can help your child learn these expectations and develop social skills and appropriate behavior.

Post the sheet on the refrigerator and use it as a reminder of ways to behave.



IMPORTANT REMINDERS

When to keep your children at home

- Fever (temperature 100 degrees F or greater) child should be fever-free, without medication for 24 hours before returning to school
- Diarrhea (4-5 loose stools within the previous 24 hour period)
- Vomiting (within a 24 hour period before school starts)
- Upper respiratory illness with frequent cough/drainage
- Strep throat (until 24 hours after treatment has begun)
- Pink eye (until 24 hours after treatment has begun)
- undiagnosed or untreated skin rash or sores that cannot be covered



You can help your child stay healthy by encouraging frequent and thorough hand washing. Hand washing is the single most important defense against disease. Be sure to notify school if your child is going to be absent and the bus company if your child rides the bus.

WSD Emergency School Closing Plans for 4K Students at Academy Sites

School Closing: All AM & PM classes cancelled. No evening activities.

Yellow Bus Delay: All AM & PM classes cancelled. No evening activities.

District Wide Emergency Closing After Students Are At School: If morning 4K students are already at school, parents will be responsible for picking them up at school. There will not be bus service. No evening activities.

The 4K class times fit in between the pick-up and drop-off times for the rest of the school district. The same buses transport the older students to school before transporting the 4K students and likewise, take the 4K students home before taking the older students home.



In rare occasions, the Wausau School District is forced to cancel classes during the school day, usually due to inclement weather. If classes are cancelled after 4K students are already at school, this creates a problem for the bus company as they don't have enough buses to take the 4K students home as well as the rest of the district's students.

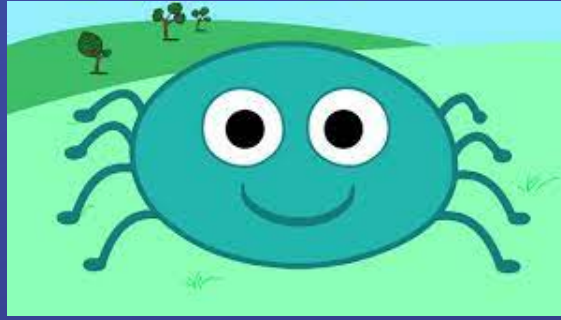
Due to the number of students involved, the bus company will transport the elementary, middle and high school students home on days that school is cancelled. This eliminates the possibility for transportation for the 4K students. Therefore, it will be necessary for parents to have a plan in place for school cancellations. Each family will need to designate a person who will be responsible for picking up their 4K student at school.

TUCKER'S NURSERY RHYME CORNER



The Itsy Bitsy Spider

The itsy, bitsy spider went up
the water spout.
Down came the rain and
washed the spider out.
Out came the sun and dried
up all the rain, and the itsy,
bitsy, spider climbed up the
spout again.



Little Miss Muffet

Little miss Muffet she sat on her tuffet,
eating her curds eating and whey
Along came a spider who sat down
beside her
And frightened miss Muffet away
Little miss Muffet she sat on her tuffet,
eating her curds eating and whey
Along came a spider who sat down
beside her
And frightened miss Muffet away



One, Two, Buckle My Shoe

1,2, buckle my shoe.
3, 4 shut the door.
5, 6 pick up sticks.
7, 8 lay them straight.
9, 10 put them back again.

