

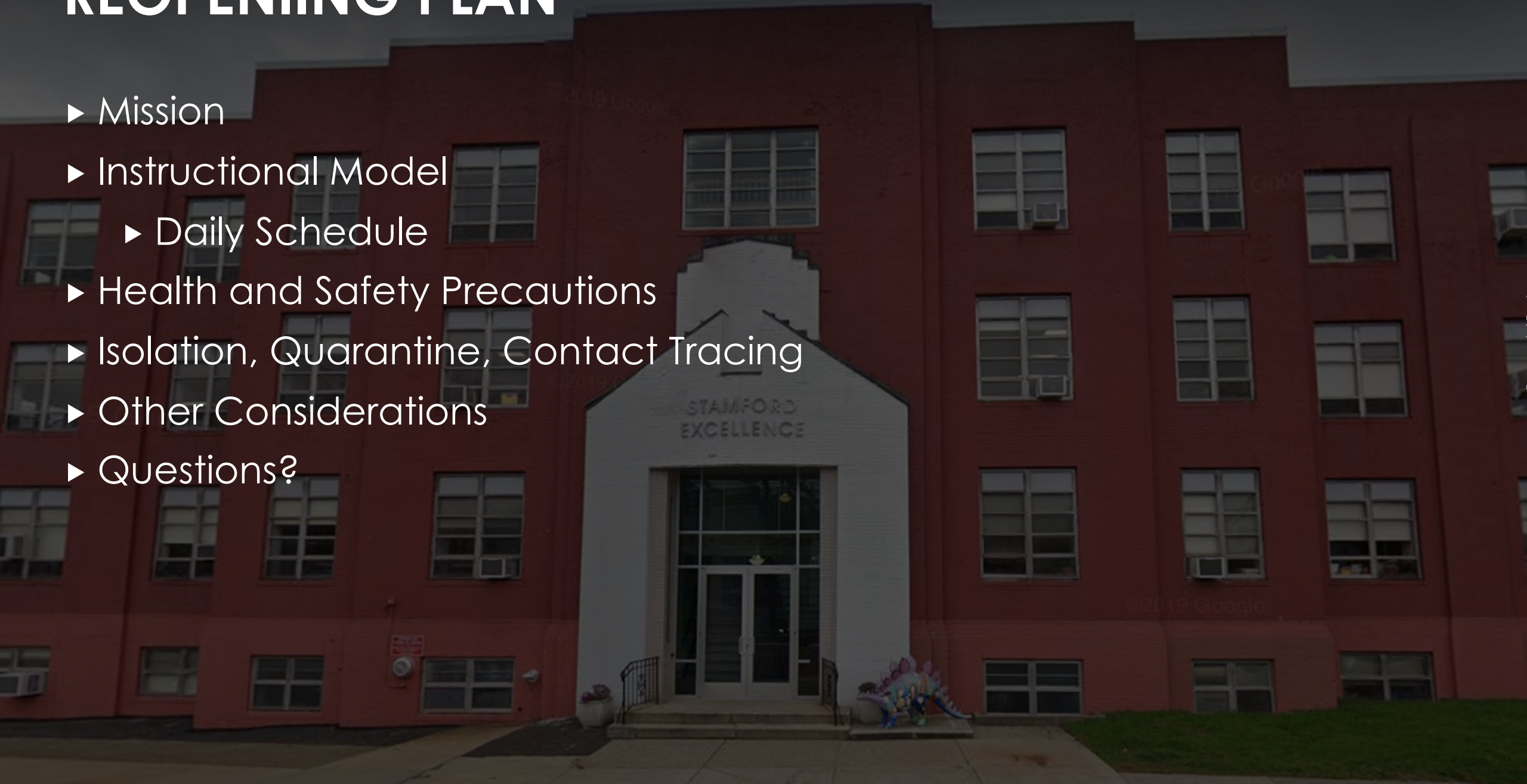
# BRONX CHARTER SCHOOL FOR EXCELLENCE

2021-22 Reopening Plan



# REOPENING PLAN

- ▶ Mission
- ▶ Instructional Model
  - ▶ Daily Schedule
- ▶ Health and Safety Precautions
- ▶ Isolation, Quarantine, Contact Tracing
- ▶ Other Considerations
- ▶ Questions?



# Our Mission

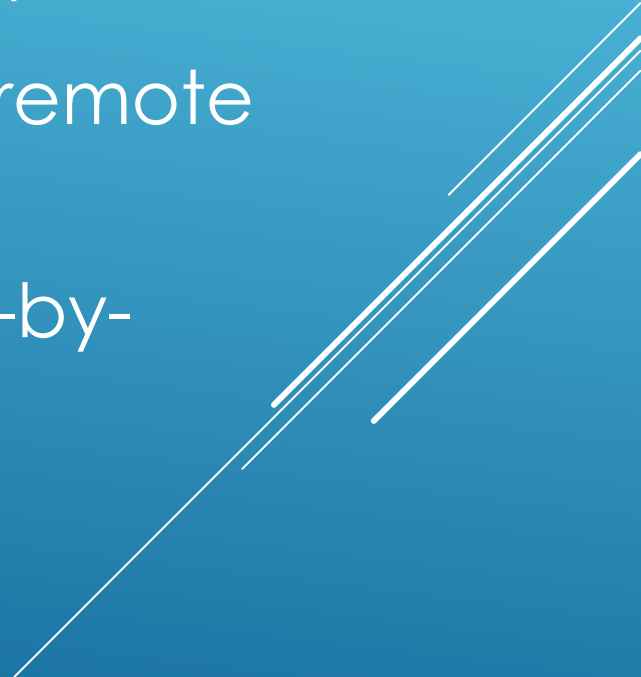


Our mission is to prepare our scholars to compete for admission to and succeed in top public, private and parochial high schools by cultivating their intellectual, artistic, social, emotional, and ethical development.

Within this presentation, we describe how we will educate our scholars through careful planning and the necessary agility to adapt based on local health data, individual considerations, and surrounding circumstances.

It should be noted that these plans are considered living documents as implementation and health data will likely inform better practices and require constant evolution in execution.

# INSTRUCTIONAL MODEL: FULL IN-PERSON LEARNING

- Return to pre-pandemic schedule with modifications for health and safety using a phased approach
  - The school is not permitted to offer hybrid/fully remote options at this time
  - Documented exceptions evaluated on a case-by-case basis
- 
- A series of white diagonal lines of varying lengths and thicknesses are positioned in the bottom right corner of the slide, creating a modern, abstract graphic element.

# DAILY SCHEDULE

Elementary School Daily Schedule	
<b>7:30 - 8:15</b>	Intervention
<b>8:15 - 8:40</b>	Morning Meeting (K-2)/Review (3-4)
<b>8:40 - 9:05</b>	Reading Block-Whole Group
<b>9:10 - 9:30</b>	Reading Block-Close Reading
<b>9:30 - 10:30</b>	Reading Block-Small Group
<b>10:30-11:30</b>	Math/Specials
<b>11:30-12:30</b>	Lunch/Math/Specials
<b>12:30-1:30</b>	Lunch/Math/Specials
<b>1:30-2:30</b>	Writer's Workshop and Specials Lunch
<b>2:30-3:30</b>	Specials/Science/SS
<b>3:30-3:45</b>	Snack and Pack/Review
<b>3:45</b>	Bussing Dismissal
<b>4:00</b>	Dismissal Pick-Ups

# DAILY SCHEDULE


Middle School Daily Schedule	
<b>7:30 - 8:15</b>	Intervention
<b>8:15-9:45</b>	Humanities/STEM
<b>9:45-10:30</b>	Specials
<b>10:35-12:05</b>	Humanities/STEM
<b>12:10-1:00</b>	Lunch/Recess
<b>1:05-2:35</b>	Humanities/STEM
<b>2:38-4:08</b>	Humanities/STEM



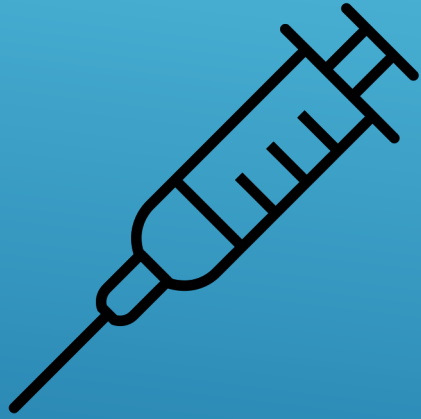


# HEALTH AND SAFETY PRECAUTIONS

## LAYERED MITIGATION STRATEGIES

- ▶ Vaccines/Screening/Testing
  - ▶ Masks
  - ▶ Ventilation
  - ▶ Cohorts and Distancing
  - ▶ Cleaning and Disinfection
  - ▶ Isolation, Quarantine, and Contact Tracing
  - ▶ Other considerations: Buses, Visitors, Lunch/Recess, Specials
- 
- A series of white diagonal lines of varying lengths and thicknesses are positioned in the bottom right corner of the slide, creating a modern, abstract graphic element.





# VACCINES

- ▶ The CDC continues to recommend VACCINES as the #1 prevention strategy.
- ▶ In accordance with local and state mandates, Excellence will be instituting a vaccine/screening test policy for employees.
- ▶ We continue to encourage age-eligible individuals to get vaccinated. However, mandates for scholars are not currently applicable.



Please pre-screen your child at home for any of the following potential symptoms of a COVID-19 infection. **Please do not send your child to school with any of the following:** (Most concerning symptoms are in BOLD red)

- ▶ **Fever (100°F or greater)**
- ▶ **Cough;**
- ▶ **Shortness of breath or difficulty breathing;**
- ▶ **Muscle or body aches/Chills;**
- ▶ **New loss of taste or smell;**
- ▶ Fatigue;
- ▶ Headaches;
- ▶ Sore throat;
- ▶ Congestion or runny nose;
- ▶ Nausea or vomiting; and/or
- ▶ Diarrhea

# PRE-SCREENING



If your child is identified as a close contact or develops any of the symptoms, please DO NOT medicate your child and send him/her to school. Please contact your healthcare provider and get your child tested.

**PRE-SCREENING  
CONTINUED**



# MASKS

In accordance with state mandates and CDC, Department of Health (DOH), and American Academy of Pediatrics (AAP) guidance:

- ▶ All students and staff must wear a mask regardless of vaccination status.
- ▶ Face coverings will also be required outdoors in crowded areas when physical distancing is not possible (for example, during daily arrival/dismissal, playground, buses, etc.).





## MASKS CONTINUED

- ▶ Acceptable face masks include multi-layer cloth masks or disposable procedure-style masks that completely cover the nose and mouth.
- ▶ **\*\*Please consider masks that have a wire over the bridge of the nose that helps to keep it in place.\*\***
- ▶ Exemptions will be determined on a case-by-case basis. Medical contraindications are extremely rare.







# VENTILATION

- ▶ All school HVAC systems have been carefully evaluated to align with Coronavirus safety protocols. All systems have or are in the process of being upgraded to facilitate safe air exchange and filtration.



## Distancing

- ▶ Classroom desks will be forward-facing and spaced three feet apart to the greatest extent possible. Partitions will also be used as an extra measure of protection.
- ▶ In all other spaces, scholars and staff will maintain 6 feet of social distancing.

## Cohorts

- ▶ Cohorting will be implemented in a phased approach.
- ▶ Scholars will remain with their classroom cohort throughout the day. This includes during lunch, recess, and specials.
- ▶ Our middle school content area teachers will rotate through a fixed set of classrooms while maintaining social distancing.

# DISTANCING CONTINUED

## ► Social Distancing, cont.



- Social distancing markers will be placed throughout and around the building. One-way markers, signs, and postings will help control foot traffic.
- Scholars will have their own baggie, cubby, or bin for their belongings, which will be kept next to them in the classroom to reduce foot traffic across the classroom.
- Students will also be discouraged from sharing items or materials to prevent transmission.
- Hand hygiene will be practiced daily.
- There will be no use of common areas such as water fountains, classroom rugs, or communal bookshelves/classroom libraries.

# CLEANING AND DISINFECTION



- ▶ Excellence will follow the CDC's Guidance for Cleaning and Disinfecting
- ▶ Cleaning, sanitizing, and disinfecting learning spaces, surfaces, common and high traffic areas will occur daily
- ▶ High-touch areas and surfaces will be cleaned more frequently. These include:
  - ▶ Hand rails
  - ▶ Door knobs
  - ▶ Push bars
  - ▶ Lunch room
  - ▶ Nurse's office

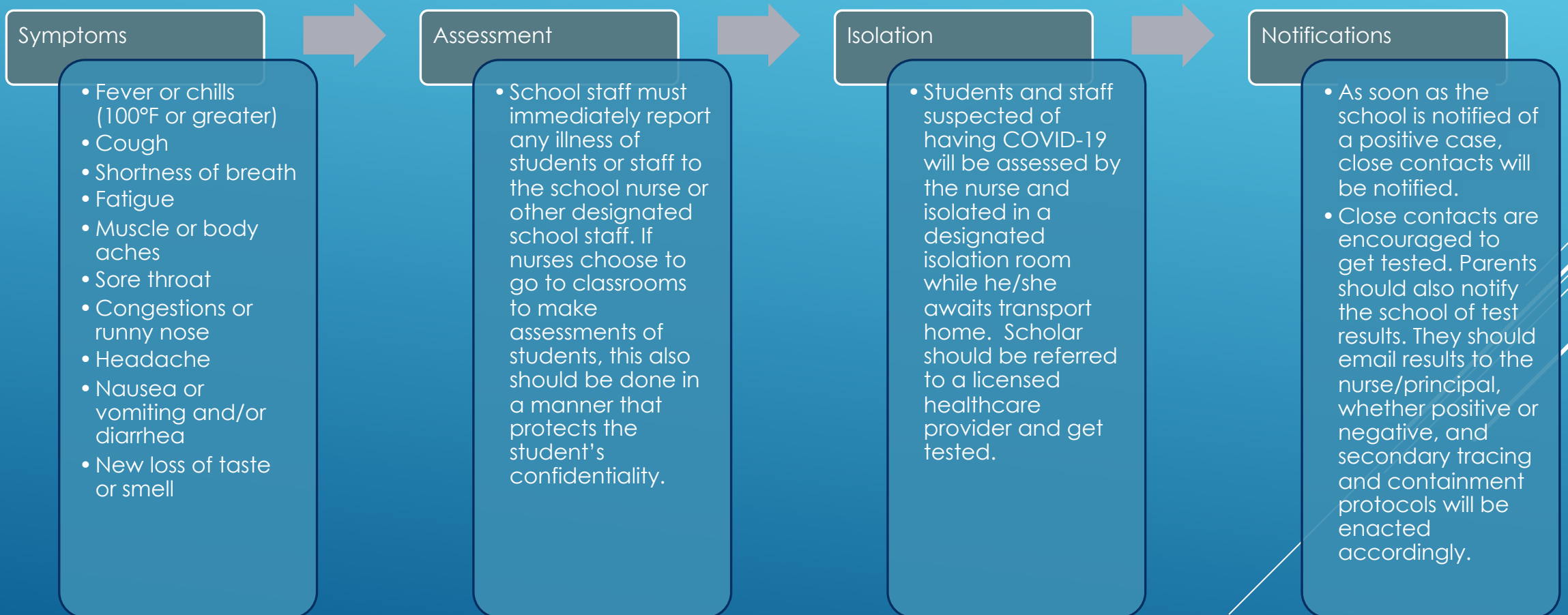


# ISOLATION, QUARANTINE, CONTACT TRACING





# CONTAINMENT



# DEFINITIONS



**Case:** An individual who tests positive for SARS-CoV-2.



**Close Contact:** A person who is exposed to a case, either by direct exposure (the person coughed or sneezed in your face) or spent approximately 15 or more cumulative minutes within a 24-hour period within 6 feet of a case.



**Contact of a Contact:**  
A person who has been near a close contact.

# ISOLATION



**Case:** If you test positive for SARS-CoV-2, you must isolate for at least 10 days from symptom onset or if asymptomatic, from the date your test sample was taken. You may not return to schools/work until at least 24 hours pass without the use of fever-reducing medication and improvement of other symptoms.

# QUARANTINE



## Close Contact:

- If you are fully vaccinated (at least two weeks since last vaccine dose) or have fully recovered from the Coronavirus within the last 90 days, and you are exposed to a positive case, you do not have to quarantine if you remain well (no illness or symptoms). However, you must continue to wear a mask, monitor for symptoms for 14 days, and obtain a test 3-5 days from exposure to ensure you do not have an asymptomatic infection.
- If you are NOT fully vaccinated (no shots, have only had the first of a two-dose regimen, or less than two weeks since your last dose), you must quarantine for 10 days, monitor for symptoms for 14 days, and should get tested 3-5 days from exposure.
- Any close contacts regardless of vaccination status should consult with a licensed healthcare provider if symptoms arise.



**Contact of a Contact:** If you are a contact of a contact, you do not need to isolate or quarantine. However, it may be a good idea to monitor for any symptoms for 14 days.



# QUARANTINE CONTINUED

## Close Contact Exposure

- ▶ Excellence will follow the CDC and DOH recommendations for communication with exposed individuals' families. Parents/guardians will receive a phone call and digital letter via our school communication system.
- ▶ Close contacts (which can include scholars on the bus) must quarantine for at least 10 days and will transition to fully remote instruction during this time.

# Return to School After Positive Results

Excellence will follow CDC guidance for allowing a student to return to school after exhibiting symptoms of COVID-19.

If a person is diagnosed with COVID-19 by a healthcare provider based on a test or their symptoms or does not get a COVID-19 test but has had symptoms, they should not be at school and should stay at home until:

- ▶ It has been at least ten days since the individual first had symptoms;
- ▶ It has been at least 24 hours since the individual has had a fever (without using fever reducing medicine); and
- ▶ The individual's symptoms improved.

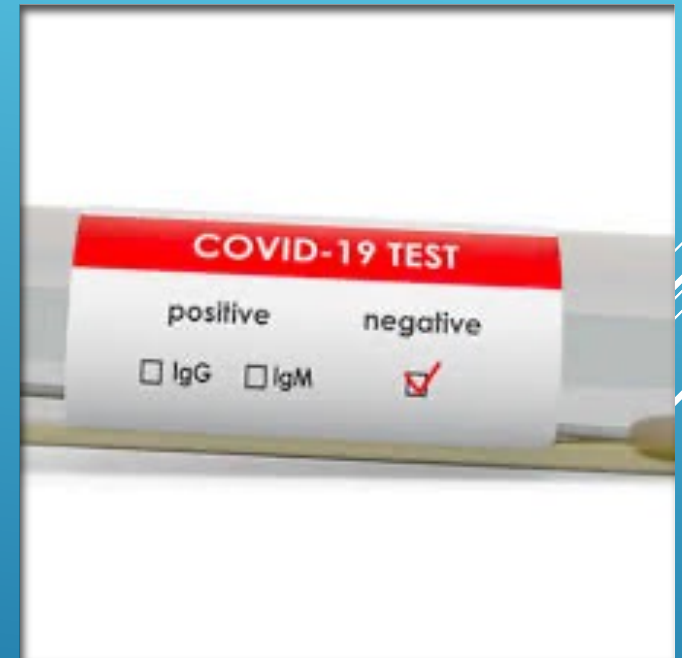


# Return to School After Symptoms, Negative Results

If a person is not diagnosed by a healthcare provider with COVID-19 (negative test with a note by a licensed healthcare provider), they can return to school :

- Once there is no fever, without the use of fever reducing medicines, and they have felt well for 24 hours;

- If they have been diagnosed with another condition and submit a written note from a healthcare provider stating they are clear to return to school.





- 
- Arrival/Dismissal
  - Busing
  - Food Service
  - A Day in the Life
  - Special Education and Social Emotional Services
  - Equity

## OTHER CONSIDERATIONS

# ARRIVAL

- ▶ Arrival & Dismissal will vary by campus.
- ▶ Building entry will be restricted to scholars, staff, and essential employees.
- ▶ No touch hand sanitizing stations will be available upon entry and throughout the building.
- ▶ Any individuals refusing to wear a mask will be denied access to the building.





# ARRIVAL



- ▶ Temperature checks via a contactless thermometer will continue to be used.
- ▶ Any individuals with a fever or above normal temperature (100°F or greater) will be denied access.

# ARRIVAL AND DISMISSAL

- ▶ Markers and signs will be used throughout and around the building to control the flow of foot traffic.
- ▶ All entry and exit point doors will be utilized to maintain social distancing, minimize clustering in the building and expedite the arrival and dismissal process.
- ▶ Schools will utilize a staggered arrival and dismissal schedule.
- ▶ Parents will not be allowed to enter the building to pick up their scholars.
- ▶ Excellence will not participate in afterschool, tutoring, extracurricular, co-curricular or interscholastic activities until further notice.

## New Arrival & Dismissal Procedures



# BUSING

- ▶ Transportation will still be provided to students who are eligible.
- ▶ All families who receive busing services will be required to review and adhere to rules & regulations.
- ▶ Busing is available for scholars through the local district. Not all scholars may qualify for busing.
- ▶ Parents are encouraged to pick up and drop off children to avoid crowded buses.



# FOOD SERVICE

- ▶ Breakfast and lunch will be served daily.
- ▶ Scholars may eat in the cafeteria with social distancing and monitors
- ▶ Parents are encouraged to send in breakfast and/or lunch with their scholars. Please be sure to send 100% fruit juice, water or milk.
- ▶ We are a NUT- FREE school.







# A DAY IN THE LIFE

- ▶ Scholars will remain with their cohort throughout the day.
- ▶ Scholars will be able to participate in lunch, recess, and specials with their cohorts.
- ▶ Scholars will not be permitted to freely walk around the classroom, building, or leave their designated cohort.
- ▶ There will be breaks built in to stand and stretch in their designated space.
- ▶ If social distancing space permits, students will also be granted periodic mask breaks throughout the day.



# A DAY IN THE LIFE

- ▶ Please send your scholars to school with all materials they will need including a bottle of water for the day.
- ▶ If your scholars or their siblings are sick or are not feeling well, **keep them home.**
- ▶ Families must do a pre-screening of their child's temperature and well-being before taking them to the bus stop and boarding the bus.
- ▶ On the school bus, siblings will be required to sit next to each other as a precaution.
- ▶ All scholars will be required to wear a face covering and abide by regulations in accordance with the district's transportation guidelines on the school bus.
- ▶ Upon arrival, all children will be screened again prior to entry.
- ▶ The school will ask the Office of Pupil Transportation to sanitize and clean the buses prior to our students boarding to go home.





# A DAY IN THE LIFE – AFTER SCHOOL

- ▶ Scholars will not participate in extracurricular, co-curricular, or interscholastic activities until further notice. Students and staff may engage in extracurricular activities that can be shared/provided remotely
- ▶ Scholars must be picked up on time for the safety of all cohorts

# SPECIAL EDUCATION & SOCIAL EMOTIONAL SERVICES

- ▶ Excellence will continue to provide equitable access to our high-quality instructional program to all students, including those with special needs and English learners. We will ensure that our scholars receive all essential services.
- ▶ Scholars who require mental health and/or behavioral support services will continue receiving services within the school day. Service providers may offer those services remotely.



# EQUITY

- ▶ Excellence will ensure that the scholars, families, and staff are able to access the instructional program to ensure a continuity of learning, regardless of which operational plan is being utilized. As always, we will be sure to preserve the equitable educational rights of all scholars, with particular attention to our most vulnerable populations. We will attend to special considerations particularly for students who are struggling or vulnerable by providing additional dedicated time for intervention and support.
- ▶ We will communicate with each family to ensure that students receive an internet-capable device from which to work (e.g. Chromebooks) and any training they need to facilitate learning. The school will also provide support in attaining dependable internet connectivity for those families in need. Our tech support team will be available to troubleshoot and mitigate any issues that may arise.



# COMMUNICATION

- ▶ Excellence will continue to provide clear, transparent, and ongoing communication and support for our families using the following communication systems:
- ▶ Email
- ▶ School Messenger
- ▶ Clever
- ▶ School website and social media accts.



- ▶ reachexcellence

- ▶ Please be sure to complete any **surveys** sent to you via School Messenger to help us plan throughout the new school year.



# FREQUENTLY ASKED QUESTIONS FOR PARENTS

- ▶ What supports will be provided for students who must access remote instruction? Scholars will have access to a laptop to support the academic program.
- ▶ What should I expect around communication? Families will receive consistent access to information by way of School Messenger, emails, phone calls, and newsletters.
- ▶ Is there a remote learning option this year? The state is not allowing for concurrent remote options this year. Exceptions may be made for documented extenuating circumstances. Those requests should be made of the Principal and will be evaluated on a case-by-case basis.
- ▶ What if I don't want my child to wear a mask? What if my child is already vaccinated? State mandates require all students and staff to wear masks for the safety of the public, regardless of vaccination status.
- ▶ Others?



# WHAT'S NEXT



- ▶ If you require further information, please visit our school website or contact your local school leader.



# LET'S HAVE A SAFE AND WONDERFUL SCHOOL YEAR!!

We are happy to answer address any  
questions or concerns you may have.

