



Eagle Express

September 24, 2021

6th Grade School Forest

Horace Mann Middle School
3101 N. 13th Street
Wausau WI 54403

horacemann.wausauschools.org

Main Telephone: 715-261-0725
Attendance: 715-261-0735
Guidance: 715-261-0740
Fax: 715-261-2035

Office Hours
7:30 am—4:00 pm

Principal
[Dr. Rob Phelps](#)

Associate Principals
[Tami Cummings](#)

Dean of Students
[Hope Cameron](#)

Wausau School District
wausauschools.org

Follow Horace Mann on Twitter
[@WausauHMann](https://twitter.com/WausauHMann)

In this Issue

Message Board	2
Phy Ed & Music	3
DC Trip Information	4
WSD COVID Guidelines	5
6th Grade School Forest	7
Jr. Smiley	8
Picture Day	9
Activities	13



Message Board

Horace Mann is on
Twitter! Follow us at
[@WausauHMann](https://twitter.com/WausauHMann)



If your child will be out of school for the day or late,
please call our attendance line at 715.261.0735.

You can leave a message 24-hours a day.

Thank you!

Visitors at Horace Mann

When you visit us at Horace Mann between 7:30-4:00,
we ask that you use the Main Entry. In efforts to keep
our students safe, all visitors are greeted at the front
door through out intercom system.

You will be asked to stop at the office to register as a
visitor and receive your visitor badge.

The first time you visit, you will be asked for a driver's
license as part of our security procedures. Subsequent
visits will not need a driver's license.

Thank you for your help in keeping our students safe.

NO SCHOOL DAYS

**October 27 - No PM Classes - Students
Dismissed at 10:50 am**

October 28-29 - Staff Inservice

November 24-26 - Thanksgiving Break

December 23-January 2 - Winter Break



RECEIVE DENTAL CARE RIGHT AT SCHOOL OCTOBER 12-13!

Oral Screening
Dental Cleaning
Fluoride Varnish
Sealants
Silver Diamine Fluoride
Referral Assistance

Services are provided during the day and visits are held throughout the school year.

Enroll Now for This October!

<https://enrollment.bbsmiles.org/>

Bridging Brighter Smiles, Inc. accepts Forward Health/BadgerCare Insurance Only.
Charitable care is offered for those students who do not have the financial resources to access dental care.

Any Questions Please Call Bridging Brighter Smiles at (262)896-9891 or visit www.bbsmiles.org

Message Board

Physical Education

PE Staff:

Mrs. Johnson



sejohnson@wausauschools.org

6th, 7th, & 8th Grade

Mr. Smith



ksmith@wausauschools.org

6th, 7th, & 8th Grade

Mr. Weix



jweix@wausauschools.org

6th & 7th Grade

PE activities for the month of September have been focused on creating a positive environment, team building, communication, and more! We ask that you remind your child to bring their **PE t-shirts, bottoms, and appropriate shoes for each class**. We have been working on locker room procedures and students practicing the habit of **locking items up at all times**. We look forward to having a GREAT year in PE!

Please contact your student's individual Physical Education teacher with questions.

6th Grade Band and Orchestra Starting Soon!

In 6th grade, our WSD band and orchestra programs begin instruction. This optional program is a great opportunity for students to learn an instrument and join a fun performing group!

We will hold our orchestra and band "kickoff" classes on September 29th during 6th grade students' resource period. Our first rehearsal with instruments will be held the first week in October! All rehearsals are held DURING the school day during resource time.

There is STILL TIME for 6th grade students to join band or orchestra!!! Students can stop in to see Ms. Martin, Mr. Marrier or Ms. Ohrmundt during the school day, or call us at 261-0725.

Instruction will be available without charge; however, students are responsible for providing their own instrument, supplies and instruction book. Information on local instrument rental programs and the availability of school owned instruments will follow at a later date. PLEASE avoid purchasing or renting an instrument until your child's instrument selection is complete and you receive that information.

We can't wait to get started making music together!

Mr. Marrier, Ms. Ohrmundt and Ms. Martin

Drop Off & 6-2 News

Before School Student Drop-off

In order to continue offering a safe drop-off, we would like to review our morning procedures. Please drop off students in front of the building at the drop-off area off of 13th Street. We have two staff members on duty from 7:10-7:30. One staff member is stationed by our first crosswalk. This staff member monitors traffic moving forward and assists students/staff who cross in that area. If traffic by the front entrance is heavy, this staff member will stop traffic. The second staff member is stationed by our main entrance crosswalk and assists students/staff who cross in that area. Both staff members attempt to move traffic along as quickly as possible, yet at the same time, move students and staff toward the school in a safe manner.

As someone who drops off a student in the morning, please follow these procedures:

- Drive slowly through the drop-off zone and follow the staff members' directives (stop or slow sign).
- Drive up as far as possible before dropping off the student.
- Be prepared for a safe drop-off. Please have students exit the car door closest to the curb.
- Be prepared for a quick drop-off. Please have all conversations finished before dropping off and have items ready.
- If more time is needed for drop-off or you need to enter the building, please park in the parking lot and proceed to a crosswalk.

Thank you for maintaining a safe drop-off for everyone. If you have any questions, please contact a Horace Mann administrator.

DC/Philly/BOSTON Trip 2022 Attention students in Grades 8, 9 & 10!

Planning is underway for the 2022 DC/Philly/BOSTON trip this spring!

This year the trip will be available to 8th graders who would typically go and 9th & 10th graders who missed the trip during 8th grade due to the pandemic. Our first organizational meeting is Thursday, October 14th at 5:30 pm in the Large Group room at HMMS.

The meeting will include:

- What we will see and do on the trip
- Rooming/Safety/Expectations
- Cost & Registration Information
- Answering parent and student questions

***** It is very important that you AND a parent/guardian attend.**

We look forward to seeing you there! If you are unable to attend, please contact Mrs. Tourtillott tetourtill@wausauschools.org for more information.



Message Board

WSD COVID GUIDELINES 21-22

Students must stay home from school if they have the following symptoms.

One of these symptoms:

- New or worsening cough
- Shortness of breath/difficulty breathing
- New loss of smell or taste

Two or more of these symptoms:

- Fever over 100.4/Chills
- Sore throat
- Headache
- Nausea/vomiting
- Diarrhea
- Runny nose/congestion
- Fatigue
- Muscle/body aches

- If a student has symptoms, it is recommended that they immediately be tested for COVID, regardless of vaccine status.
- The student may return to school with proof of a negative **PCR** COVID test or an alternate diagnosis from a medical practitioner.
- If parents choose not to have their child tested, the student is presumed positive and must stay home for 10 days, be fever-free for 24 hours without fever-reducing medication, and have improvement of symptoms before returning to school.
- If a student or anyone else living in the home tests positive, all students in the home (unless vaccinated and not showing symptoms) must quarantine for the 10 days of the positive person's isolation PLUS an additional 10 days quarantine, a total of 20 days. If the positive person can isolate away from the students, the other students in the home must quarantine for 10 days from the last contact with the positive person.
- Parents are asked to notify the school if a student later develops symptoms or tests positive for COVID.
- If your child is identified as a close contact to someone outside the home, follow the directions from the health department.

Contact the [Marathon County Health Department](#) with questions. **715-261-1900**

Sports Folders for Boys Basketball are ready to be picked up in the Main Office. Practice begins on October 18th after school and a physical is needed in order to practice. Girls intramural Volleyball and Boys and Girls Intramural Soccer permission slips are also available in the Main Office. Both of these sports start on October 11.

Horace Mann is also looking for an experienced Track Coach to work with our athletes in the spring.


Please contact Mark Beversdorf if you have any questions. mbeversd@wausauschools.org or 715-216-0736

WSD COVID Information

As we move forward in the 2021-22 school year, we want to take this opportunity to share an update with you about some changes to the District's COVID-19 mitigation strategies following Monday night's Board of Education meeting.

The Board approved two matrices, one for elementary schools and one for secondary schools, that are guidelines for analyzing case data. They are real tools that allow administrators, school staff, and nurses to collaborate around data and context to find the best actions to keep kids in school, in-person safely, and provide them with the highest quality education at the same time.

While you'll notice differences between the elementary and secondary school matrices, the goal is the same: keeping your students safe while offering them the highest quality educational experiences at the same time.

High School and Middle School Levels		
	Actions for Affected Secondary School	
Average Daily Student and Staff Positive Cases Over 7 Days	0 - 1.66%	Level 1 <ul style="list-style-type: none"> • Masks optional • Self check for symptoms • Stay home when ill
	1.67 - 3.33%	Level 2 <ul style="list-style-type: none"> • Masks recommended • Building review of <ul style="list-style-type: none"> ◦ non-essential visitors and volunteers ◦ large school-day events • Continue co-curricular and community events OUTSIDE of school hours • Continue self checking for symptoms and staying home when ill
	3.34 - 5.00%	Level 3 All Level 2 actions plus: <ul style="list-style-type: none"> • 3' of distance to the best of our ability. • Increase the time in outdoor learning. • District review of large gatherings/events
	5.01% +	Level 4 All Level 3 actions plus: <ul style="list-style-type: none"> • Masks required within the school for 7 days
<ul style="list-style-type: none"> • Data will be analyzed each Thursday • Level number will be shared with students and families each Friday • Level actions will be implemented each Monday 		

Because of the way our secondary schools operate, this matrix considers all cases within the entire school, not a particular classroom. If an individual school reaches a positivity rate of 5% or more, masks will be required in the entire building. Principals will collaborate with school staff and the district team to plan how to best implement other actions at each level and school. Again, any changes will be communicated to you.

To reflect the above matrices, the District has made some changes to the COVID-19 Dashboard.

Since August, the Wausau School District has been working closely with the Department of Health Services to bring COVID-19 testing to each of our District buildings. We hope to begin testing by the second week of October. We will keep you updated and let you know the exact launch date once we have it.

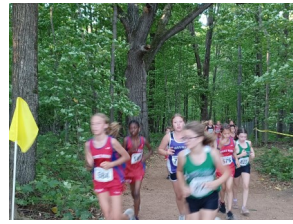
Parents and guardians, please know we appreciate your continued flexibility as we navigate this pandemic amid a new school year. If you have any questions or concerns, please do not hesitate to reach out to your child's school.

Thank you,

Wausau School District Administration

6th Grade at School Forest





Jr. Smiley



On Thursday, September 16, Horace Mann hosted the Jr. Smiley Cross Country race. Teams from 20 different schools in central Wisconsin ran the new course. At the end of the races, the Horace Mann boys team placed 3rd overall! Great job to all of our cross country athletes!



Lifetouch.

PICTURE DAY IS COMING



Order your school pictures
today on mylifetouch.com



Tuesday, October 05, 2021
Horace Mann Middle School



- ① Visit mylifetouch.com
- ② Enter your Picture Day ID
EVTKSFRKN
- ③ Order your perfect package—
and don't worry about returning
anything on Picture Day!

Lifetouch
REWARDS™

Earn exclusive offers for your
online picture purchases.

Horace Mann 2021-22 Time Schedule (M, T, Th, F)

	6th	7th	8th
HR	7:35-7:43	7:35-7:43	7:35-7:43
1	7:45-8:25	7:45-8:25	7:45-8:25 ALLIED
2	8:29-9:09	8:29-9:09	8:29-9:09 ALLIED
3	9:13-9:53	9:13-9:53	9:13-9:53 ALLIED/IE
4	9:57-10:37	9:57-10:37	9:57-10:37
5	10:41-11:17 LUNCH	10:41-11:19 IE	10:41-11:21
6	11:21-11:59 IE	11:23-11:59 LUNCH	11:25-12:05
7	12:03-12:43 ALLIED	12:03-12:43	12:09-12:43 LUNCH
8	12:47-1:27 ALLIED	12:47-1:27	12:47-1:27
9	1:31-2:11	1:31-2:11 ALLIED	1:31-2:11
10	2:15-2:55	2:15-2:55 ALLIED	2:15-2:55

Bells at: 7:30, 7:35, 8:25, 8:29, 9:09, 9:13, 9:53, 9:57, 10:37, 10:41, 12:43, 12:47, 1:27, 1:31, 2:11, 2:15, 2:55

Horace Mann 2021-22 Time Schedule (Wednesdays)

	6th	7th	8th
HR	7:35-7:39 <i>Dismissal after announcements</i>		
1	7:39-8:15	7:39-8:15	7:39-8:15 ALLIED
2	8:19-8:55	8:19-8:55	8:19-8:55 ALLIED
3	8:59-9:35	8:59-9:35	8:59-9:35 ALLIED/IE
4	9:39-10:15	9:39-10:15	9:39-10:15
	10:19-10:55 <i>Leader in Me, ACP, or other</i>		
5	10:59-11:35 LUNCH	10:59-11:35 IE	10:59-11:35
6	11:39-12:15 IE	11:39-12:15 LUNCH	11:39-12:15
7	12:19-12:55 ALLIED	12:19-12:55	12:19-12:55 LUNCH
8	12:59-1:35 ALLIED	12:59-1:35	12:59-1:35
9	1:39-2:15	1:39-2:15 ALLIED	1:39-2:15
10	2:19-2:55	2:19-2:55 ALLIED	2:19-2:55

No Bells

Legend

Non-instructional day
 Non school day

Period Schedules

A
 B

July						
Su	Mo	Tu	We	Th	Fr	Sa
				1	2	3
4	5	6	7	8	9	10
11	12	13	14	15	16	17
18	19	20	21	22	23	24
25	26	27	28	29	30	31
August						
Su	Mo	Tu	We	Th	Fr	Sa
1	2	3	4	5	6	7
8	9	10	11	12	13	14
15	16	17	18	19	20	21
22	23	24	25	26	27	28
29	30	31				
September						
Su	Mo	Tu	We	Th	Fr	Sa
			1	2	3	4
5	6	7	8	9	10	11
12	13	14	15	16	17	18
19	20	21	22	23	24	25
26	27	28	29	30		
October						
Su	Mo	Tu	We	Th	Fr	Sa
					1	2
3	4	5	6	7	8	9
10	11	12	13	14	15	16
17	18	19	20	21	22	23
24	25	26	27	28	29	30
31						
November						
Su	Mo	Tu	We	Th	Fr	Sa
	1	2	3	4	5	6
7	8	9	10	11	12	13
14	15	16	17	18	19	20
21	22	23	24	25	26	27
28	29	30				
December						
Su	Mo	Tu	We	Th	Fr	Sa
			1	2	3	4
5	6	7	8	9	10	11
12	13	14	15	16	17	18
19	20	21	22	23	24	25
26	27	28	29	30	31	

January						
Su	Mo	Tu	We	Th	Fr	Sa
						1
2	3	4	5	6	7	8
9	10	11	12	13	14	15
16	17	18	19	20	21	22
23	24	25	26	27	28	29
30	31					
February						
Su	Mo	Tu	We	Th	Fr	Sa
		1	2	3	4	5
6	7	8	9	10	11	12
13	14	15	16	17	18	19
20	21	22	23	24	25	26
27	28					
March						
Su	Mo	Tu	We	Th	Fr	Sa
		1	2	3	4	5
6	7	8	9	10	11	12
13	14	15	16	17	18	19
20	21	22	23	24	25	26
27	28	29	30	31		
April						
Su	Mo	Tu	We	Th	Fr	Sa
					1	2
3	4	5	6	7	8	9
10	11	12	13	14	15	16
17	18	19	20	21	22	23
24	25	26	27	28	29	30
May						
Su	Mo	Tu	We	Th	Fr	Sa
1	2	3	4	5	6	7
8	9	10	11	12	13	14
15	16	17	18	19	20	21
22	23	24	25	26	27	28
29	30	31				
June						
Su	Mo	Tu	We	Th	Fr	Sa
			1	2	3	4
5	6	7	8	9	10	11
12	13	14	15	16	17	18
19	20	21	22	23	24	25
26	27	28	29	30		

Default number of instructional minutes per day: 360
 Total number of instructional days this year: 175
 Total number of instructional minutes this year: 0

2021-2022 Wausau School District Calendar

Board approved: 2-22-2021

July 2021						
Su	Mo	Tu	We	Th	Fr	Sa
				1	2	
	5	6	7	8	9	
	12	13	14	15	16	
	19	20	21	22	23	
	26	27	28	29	30	

August 2021						
Su	Mo	Tu	We	Th	Fr	Sa
	2	3	4	5	6	
	9	10	11	12	13	
	16	17	18	19	20	
	23	24	25	26	27	
	30	31				

September 2021						
Su	Mo	Tu	We	Th	Fr	Sa
			1	2	3	
	6	7	8	9	10	
	13	14	15	16	17	
	20	21	22	23	24	
	27	28	29	30		

Aug 26, 30-31: Professional Learning
 Aug 27: No Classes - Non-Contract Days

Sept 1: First Day of School
 Sept 6: No Classes - Labor Day

October 2021						
Su	Mo	Tu	We	Th	Fr	Sa
					1	
	4	5	6	7	8	
	11	12	13	14	15	
	18	19	20	21	22	
	25	26	27	28	29	

November 2021						
Su	Mo	Tu	We	Th	Fr	Sa
	1	2	3	4	5	
	8	9	10	11	12	
	15	16	17	18	19	
	22	23	24	25	26	
	29	30				

December 2021						
Su	Mo	Tu	We	Th	Fr	Sa
			1	2	3	
	6	7	8	9	10	
	13	14	15	16	17	
	20	21	22	23	24	
	27	28	29	30	31	

Oct 27: No Elementary Classes
 No AM/PM Pre-K Classes
 No PM Secondary Classes
 Oct 27: 1st Quarter Ends (40)
 Oct 28-29: No Classes - PL

Nov 24: No Classes - Non-Contract Day
 Nov 25-26: No Classes-Thanksgiving Break

Dec 23-31: No Classes - Winter Break

January 2022						
Su	Mo	Tu	We	Th	Fr	Sa
	3	4	5	6	7	
	10	11	12	13	14	
	17	18	19	20	21	
	24	25	26	27	28	
	31					

February 2022						
Su	Mo	Tu	We	Th	Fr	Sa
		1	2	3	4	
	7	8	9	10	11	
	14	15	16	17	18	
	21	22	23	24	25	
	28					

March 2022						
Su	Mo	Tu	We	Th	Fr	Sa
		1	2	3	4	
	7	8	9	10	11	
	14	15	16	17	18	
	21	22	23	24	25	
	28	29	30	31		

Jan 14: No PM Elementary Classes -
 Recordkeeping
 No AM/PM Pre-K Classes
 Jan 14: 2nd Quarter Ends (46)
 Jan 17: No Classes - PL

Feb 18: No Classes - PL

March 18: No PM Elementary Classes -
 Recordkeeping
 No AM/PM Pre-K Classes
 March 18: 3rd Quarter Ends (43)
 March 21-25: No Classes - Spring Break

April 2022						
Su	Mo	Tu	We	Th	Fr	Sa
					1	
	4	5	6	7	8	
	11	12	13	14	15	
	18	19	20	21	22	
	25	26	27	28	29	

May 2022						
Su	Mo	Tu	We	Th	Fr	Sa
	2	3	4	5	6	
	9	10	11	12	13	
	16	17	18	19	20	
	23	24	25	26	27	
	30	31				

June 2022						
Su	Mo	Tu	We	Th	Fr	Sa
			1	2	3	
	6	7	8	9	10	
	13	14	15	16	17	
	20	21	22	23	24	
	27	28	29	30		

April 15: No Classes

May 27: No Classes - PL
 May 30: No Classes - Memorial Day

June 3: No PM Classes - All
 Elementary Recordkeeping
 No AM/PM Pre-K Classes
 June 3: Students' Last Day
 June 3: 4th Quarter Ends (46)
 June 6: Teachers' Last Day

- No Classes
- Students' first and last days of school
- Quarter Ends (1st - 40) (2nd - 46) (3rd - 43) (4th - 46) = 175
- No Classes - Professional Learning (PL)
- Teachers' last day of school
- No Pre-K or Elementary Classes / No PM Secondary Classes / Recordkeeping AM (Elem) and Parent/Teacher Conferences PM
- 2022 High School Graduation: May 23 - West; May 24 - WAVE; May 25 - East; May 26 - EEA

MasterMinds



Every **A day** Thursday or Friday until the end of 1st quarter, Mr. Boller will be leading the MasterMinds club from **3:00-4:20**. Join us if you seek some fun competition in activities including chess, Dungeons & Dragons, Dominion, Magic the Gathering, and other strategy games. You might even want to try your hand at game design!

WHAT: MasterMinds

WHO: all grade levels with Mr. Boller

WHEN: A days, Thursdays and Fridays, starts **September 10th**, until end of 2nd quarter

WHERE: Room 210, upstairs in the corner of the 8th grade wing (above the art rooms)

HOW: parents may return this form to my email, or students return paper copy to homeroom

Email Mr. Boller with any questions. Permission/Information slips are posted on the G2M wall near the counseling offices.

Yours in going above and beyond,

Mr. Aaron Boller

Middle School Gifted and Talented Resource Teacher
aboller@wausauschools.org / 715-261-0725, X35604





G2M Permission Slip [CLICK HERE!](#)

Study Zone



Need more time to finish homework?
Want a teacher available to help answer questions?
Join Study Zone after school!

Mondays/Tuesdays/Thursdays

3:00 - 4:00pm

Rooms 226/228



JOIN THE LADY LUMBERJACKS



Girls youth basketball teams are forming now.
Open to all Eastside girls grades 4th-8th

sept
28
6:00p

PARENT MEETING

Informational meeting
Registration
No payment needed at this time

sept
30
6-7:30p

OPEN GYM

Meet the coaches
Drills and skills
Have FUN!

Both events will be held
in the Wausau East
High School Gymnasium

Contacts:

Jeff Waldvogel
kwaldvogel2@charter.net

Stacy Olson
stacyolsor@gmail.com



Lumberjack Basketball

Dear Parent(s)/Guardian(s),

Included is a registration form for the 2021-2022 *Junior Jax Basketball Program*. The main goal of the Junior Jax Program is to get Eastside boys in grades 3 – 8 excited about and passionate for the game of basketball.

Each Saturday, participants will have the opportunity to work with the high school coaching staff, as well as high school players. In addition, the Traveling Team coaches will also be a part of the program, to help both the players and Traveling Team coaches become a cohesive group working toward a common goal.

In addition to the Saturday morning Junior Jax Program, we also have Traveling Teams for grades 3 thru 8. Teams will practice twice a week throughout November and December. Tournaments for grades 4, 5 and 6 will be on Saturdays throughout January & February. Practices will also continue twice a week throughout January & February. There will be an informational meeting about Traveling Basketball for parents of 3rd, 4th, 5th and 6th grade players on two dates. Saturday, November 6th at 8:15 AM at Wausau East. This is the same day as the first Junior Jax session. There will also be a meeting on Saturday, November 13th at Wausau East during the second Jr Jax session. A parent/guardian needs to attend one of the meetings if their son is playing on the Traveling Team at his grade level. There will be a separate meeting for parents of players in grades 7 & 8 who plan to play Traveling Basketball on Saturday, December 11 at 8:15 AM at Wausau East. This too, is a Junior Jax Saturday date. I am anticipating that the meeting will take approximately 30 minutes to go over needed information and answer questions.

Please make sure to include at least one e-mail address (*more if you would like*) on the enclosed registration form, as I would like to be able to communicate a variety of information as it pertains to Lumberjack Basketball over the course of the season.

I ask that you make every effort to return the form to me by the listed due date (**October 15**), as that will give me ample time to put together e-mail groups, order T-shirts and get other important information to you in a timely manner. The first Junior Jax Saturday is November 6th @ Wausau East from 8 – 10 AM.

I look forward to meeting you and working with your son(s) to continue to make Lumberjack Basketball a rewarding experience for everyone involved. If you have any questions prior to the scheduled meeting date feel free to send me an e-mail, text or call me.

Dan Garrett
Varsity Head Coach

dgarrett@wausauschools.org
cell # (715)212-7788

WAUSAU EAST BOYS' BASKETBALL JUNIOR JAX 2021-2022

Program Outline: Each Junior Jax participant will have the opportunity to work with the high school coaching staff, high school players and traveling team coaches to develop their basketball skills each Saturday.

WAUSAU EAST HIGH SCHOOL
8am-10am Saturday November 6 th , 13 th , 20 th December 11 th

Cost: \$25 per child (second child, third child, etc. - \$10)

- Make checks payable to: *Wausau East Boys Basketball*
If you are unable to pay the Jr. Jax fee, please contact Coach Garrett @ 715-212-7788 or e-mail at dgarrett@wausauschools.org

Sign up using the QR Code Below



Or send your registration by mail by filling out the below information to

Coach Dan Garrett
2607 N 18th St
Wausau, WI 54403

.....

NAME	Grade 2021-2022	School
Parent(s) Name(s)	Phone #	
Address	E-mail Address	

- Circle your child's T-shirt Size: Youth S M L Adult S M L XL

If you are interested in your son playing on an Eastside Traveling Team please check below. Traveling Teams are for grades 4 thru 8.

_____ Yes, my son is interested in a Traveling Basketball Team