



CREAN LUTHERAN
HIGH SCHOOL



**PROCLAIMING
JESUS CHRIST
THROUGH EXCELLENCE IN
EDUCATION**

I love you, O LORD, my strength. The LORD is my rock and my fortress and my deliverer.

Psalm 18:1-2a

OUR MISSION

PROCLAIMING
JESUS CHRIST
THROUGH EXCELLENCE IN
EDUCATION

CHRISTIAN FAITH

Crean Lutheran High School desires its students to be knowledgeable about their faith and willing to defend their beliefs; to engage in the classroom; to think critically and communicate clearly; and finally, to live their lives as servant-leaders for Jesus Christ.

The graphic consists of three overlapping circles with a dark blue background and white text. The top circle is labeled "I AM A CHRISTIAN" and contains a photograph of a church choir performing on stage under a large illuminated cross. The middle circle is labeled "I AM A LEARNER" and contains a photograph of a young man with glasses sitting at a desk, looking at a laptop. The bottom circle is labeled "I AM A SERVANT" and contains a photograph of a young woman wearing a white t-shirt with the text "CREAN LUTHERAN SPIRIT" and a logo, working with red gloves.

GREETINGS

IN THE NAME OF OUR LORD, JESUS CHRIST!

It is a joy and honor to welcome and introduce you to a special ministry in Irvine, Crean Lutheran High School. This year we celebrate God's faithfulness, amazing grace, and the many blessings in our ministry as we celebrate our 15th academic year. We invite you to come and see what the Lord is doing at Crean Lutheran High School.

OUR MISSION. While much has changed in the past 15 years, and as we continue to grow and add to our campus and community, one thing hasn't changed: our mission and commitment to Proclaiming Jesus Christ Through Excellence in Education!

In support of our mission, our schoolwide learning outcomes revolve around Christian faith. These desired outcomes are: I am a Christian; I am a Learner; I am a Servant. In the fulfillment of reaching each of these outcomes, Crean Lutheran seeks to teach and live by God's grace through a guiding Biblical worldview. It is through the nurturing lens of God's word, along with the Spirit, that we pray our students' faith will grow and equip them to understand, view, and engage the culture around them all while proclaiming Jesus Christ.

OUR VISION. By the grace of God, Crean Lutheran High School strives to continue to be a safehaven and a beacon which shines the light of Jesus Christ in a world of spiritual darkness.

Our Spirit-led and committed faculty and staff continue to embrace and pursue excellence and are committed to providing loving care for our students. They love the Lord, excel at and love what they do, and love our students. Since today's world is increasingly complex and technologically advancing at an incomprehensible pace, our efforts in the classroom are future-oriented and responsive to the rapidly changing demands and needs of our students. Together we partner as students, parents, school, church, and community in pursuit of the best educational practices in a Christ-centered environment, serving our Lord and proclaiming Jesus Christ.

OUR PASSION. The love of God and of Jesus Christ, the love of our students and their families, and the love of what we do in our daily service compel those who serve at Crean Lutheran High School.

There are no "do overs" in high school. The Crean Lutheran experience promotes an engaged student body, encouraging students to grow in their Christian faith, engage in lifelong learning, and embrace a life of serving mankind. Students are encouraged to be active participants in activities, the arts, athletics, and to have a robust four-year transformative experience.



Thank you for your consideration and time spent in getting to know more about the Crean Lutheran High School community. We hope you're led and compelled to become a member of our blessed Saints family!

In His love,

Jeffrey Beavers
Executive Director | CEO

OUR CAMPUS

Crean Lutheran High School is comprised of two properties. Our 18-acre main campus includes 58,000 sq. ft. of academic space, a 15,000 sq. ft. event center and gymnasium, over 12,000 sq. ft. of visual and performing arts space, a 5,000 sq. ft. strength and performance center, and multiple athletic fields. Our Athletic Complex, a 12-acre property within walking distance from the main campus, includes baseball and softball fields, sand volleyball courts, and six tennis courts.



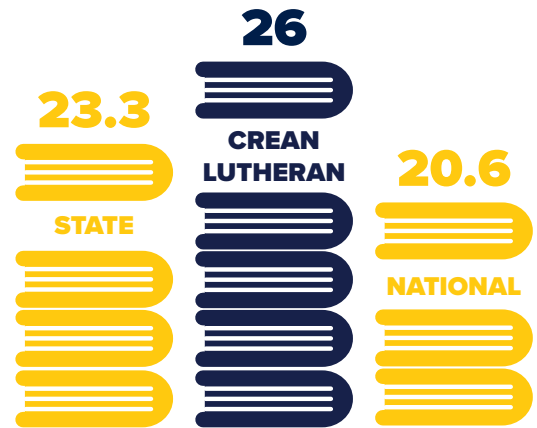
HEALTH, SAFETY, & SUPERVISION

Crean Lutheran is a closed campus committed to providing trained campus supervision throughout the school day (students may not leave campus between classes). Furthermore, classroom doors are equipped with an access control system, which enhances security on campus. By God's grace, these enhancements will allow Crean Lutheran's Student Services Department to better foster an environment where students thrive socially, emotionally, and spiritually.

ACADEMICS

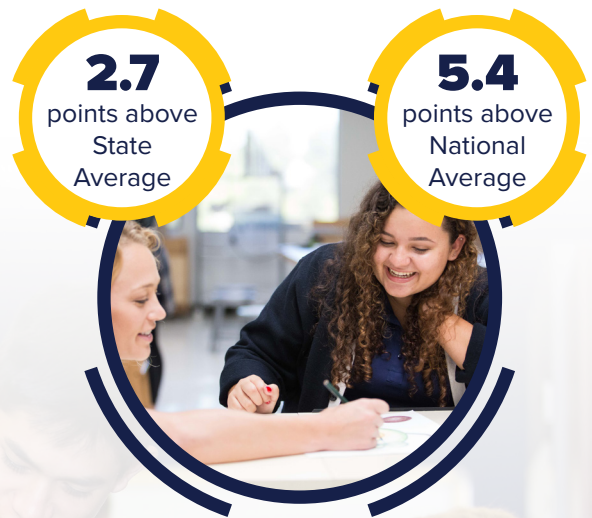
A TRADITION OF EXCELLENCE

Crean Lutheran High School is part of the renowned Lutheran education system, which has been educating students for over 165 years. The National Assessment of Educational Progress compiled evidence of Lutheran education excellence; their data shows Lutheran school students score significantly higher than all other schools, including public, Catholic, charter, and other Protestant schools (Christopher Lubienski, "Charter, Private, Public Schools and Academic Achievement," p.3). Additionally, Lutheran school students score 23 % higher than national averages on standard achievement tests (Brekke, M., Youth Research Center).



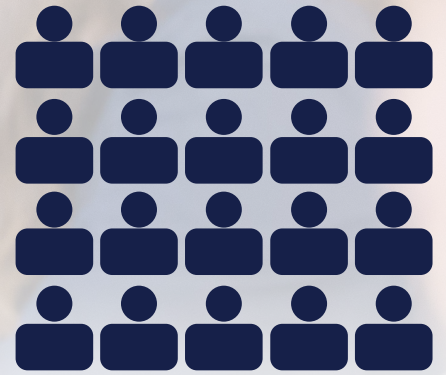
AVERAGE SAT SCORES

AVERAGE ACT SCORES



**AVERAGE
CLASS
SIZE**

20:1



CONTINUING EXCELLENCE

Crean Lutheran places high value on personalized education. Accordingly, Crean Lutheran maintains a 20:1 average class size. Students may follow various academic tracks, including those designed to meet the elevated standards of the University of California's A-G subject requirements or those customized to meet the admission guidelines for elite private institutions. A wide array of academically rigorous honors and Advanced Placement (AP) courses, as well as dual credit courses, support these tracks.



COUNSELING & CAREER PLANNING

Crean Lutheran counselors work in close partnership with students and their families to assist students in developing academically, socially, emotionally, and spiritually. The Counseling Department is comprised of six PPS credentialed counselors, thereby providing a student to counselor ratio far exceeding national standards. The Counseling Department utilizes Naviance, a college and career readiness tool that assists in the students' post-secondary planning process.

Crean Lutheran's alumni have been accepted into some of the nation's finest colleges, universities, and conservatories. Graduates from the class of 2021 are attending Cornell University, Emory University, the University of Michigan, the University of Notre Dame, New York University, Princeton University, Stanford University, UCLA, UC Berkeley, USC, the University of Pennsylvania, and many other elite institutions across the country. In support of their collegiate aspirations, Crean Lutheran students are well prepared to engage in strenuous university-level academics.



**CREAN LUTHERAN'S
STUDENT-TO-COUNSELOR RATIO**



**CALIFORNIA'S AVERAGE
STUDENT-TO-COUNSELOR RATIO**



A PROMINENT EDUCATION

Lutheran schools have a 166-year history of providing a strong educational environment. Crean Lutheran is accredited by both the Western Association of Schools and Colleges (WASC) and National Lutheran School Accreditation (NLSA).



**MULTIPLE
LEARNING
OPTIONS**



Students may take classes in various settings, including on-campus, online, and blended (a combination of on-campus and online).



****(up to 80 college units)***

Motivated students hoping to gain a running start on college coursework can complete college units while still in high school.



**OF THE CLASS OF 2021
WENT ON TO ATTEND
A COLLEGE OR
UNIVERSITY**



STUDENT ACTIVITIES



Our award-winning servant leadership team (SLT), link crew, student ambassadors, academic teams, clubs, and service and outreach programs provide an array of opportunities for students to become involved in campus activities. Whether planning campus-wide pep rallies and spirit events, welcoming new students to the campus, competing in debate, building robots, participating in student-driven clubs, or volunteering locally and globally, Crean Lutheran students can enjoy a variety of programs where they are welcomed, get involved, and experience growth.

TECHNOLOGY

Integrating technology into the classroom setting is a hallmark of Crean Lutheran. All students are required to have a laptop that meets technology guidelines. From online research to group collaboration, students use their laptops on a daily basis. Crean Lutheran also encourages students to utilize available digital textbooks and the school's JSTOR subscription to collegiate-level academic journals to advance their academic pursuits. Finally, Crean Lutheran High School employs Canvas as a powerful course management system. Through Canvas, students can submit homework, download class content, take quizzes, communicate with teachers, and monitor grades.





Aaron Jin
is attending
Stanford
University.



Jiarui (Flora) Ding
is attending
Cornell
University.



INTERNATIONAL DEPARTMENT

Crean Lutheran High School provides a top-tier education where students learn from an incomparable faculty of highly qualified and passionate professionals. Crean Lutheran's nationally-commended International Department plays a pivotal role in making Crean Lutheran High School one of the nation's most progressive high schools. Students who come through the International Department have the full support of the staff, faculty, and administration which ensures the best academic and student experience. Crean Lutheran High School's International students have been accepted to many top universities in the U.S. as they have the opportunity to participate in college preparatory coursework such as Honors and Advanced Placement classes. Individuals interested in learning more about the international admissions process should email the International Department at int@creanlutheran.org.

LEARNING SUCCESS PROGRAM

The Learning Success Program (LSP) assists students to excel academically in pursuit of the school's mission of Proclaiming Jesus Christ through Excellence in Education. LSP Director Mary Oliver, M.Ed., M.A. leads the program with the support of an LSP counselor and resource teachers. The program supports students with documented learning needs through accommodations and counseling so that they may achieve success. For more information, contact the Admissions Department at admissions@creanlutheran.org.



COHORTS

Crean Lutheran offers four Christ-centered and scholastically rigorous cohorts that prepare students for academic and professional success in their chosen field of study. Each cohort introduces students to high-level professionals, includes experiential field trips, and provides both independent research and internship opportunities. Cohort students take a variety of dual-credit college courses, which help them to become emerging leaders in a professional environment. Cohort graduates receive special recognition at graduation as well as on their transcripts. Enrollment in a cohort requires a separate application. More information is available at creanlutheran.org/cohorts.

MEDICAL COHORT

The Medical Cohort is designed for students who are interested in learning about health careers. The program prepares students to study various disciplines in the medical field through specialized coursework, lectures from health professionals, and field trips to medical and industrial facilities. Our students acquire clinical knowledge through partnerships with local hospitals, universities, and other medical facilities.



**MEDICAL
COHORT
COURSES
INCLUDE:**

- Medical Careers
- AP Biology
- AP Chemistry
- AP Physics
- Honors Sports Medicine
- Honors Anatomy & Physiology

LAW COHORT

The Law Cohort provides a launch point for students interested in pursuing careers in law, elected office, and/or government. The program prepares students for the rigorous analytical reading and writing requirements of the legal profession while emphasizing the philosophical foundations of law, government/political connections, and the practical aspects of legal practice. Additionally, our students will meet practicing attorneys from a variety of fields, visit elected officials and local governments, and participate in one or more competition-based activities.



**LAW
COHORT
COURSES
INCLUDE:**

- Honors Ethics
- Honors Communications
- Honors Introduction to Law
- Honors Philosophy of Law
- Honors Speech & Debate
- AP American Government

ENGINEERING COHORT

The Engineering Cohort is designed to empower students by building a strong foundation for college and a career through Project Lead the Way (PLTW) engineering courses. Students engage in interdisciplinary activities, develop critical thinking skills, and learn to collaborate with others. Through partnerships with UCI and other universities, students are exposed to a variety of engineering specializations.

ENGINEERING COHORT COURSES INCLUDE:

- Honors Computer Programming I and II
- Honors Introduction to Design
- Honors Principles of Engineering (PLTW)
- Honors Aerospace (PLTW)



BUSINESS COHORT

The Business Cohort develops future leaders and entrepreneurs for a global economy, preparing students for careers in marketing, finance, accounting, communication, and hospitality. The courses engage students in real world experiences, promoting success in college and their careers. By drafting resumes, interviewing for internships, writing grants, building their own businesses, and learning from influential guest speakers and local business partners, students are prepared to make a difference in their lives and the world.

BUSINESS COHORT COURSES INCLUDE:

- Honors Introduction to Business
- Honors Communication
- Honors Marketing
- Honors Accounting
- Honors Global Business
- Honors Finance
- AP Statistics



STUDENT SUCCESS

Comprehensive services offered through six full-time PPS-credentialed counselors help Crean Lutheran students matriculate to top colleges and universities around the nation. Below is a list of institutions where a few of our graduates are pursuing higher education:

Alabama

Samford University
University of Alabama

California

Art Center College of Design
Azusa Pacific University
Biola University
California Baptist University
California Institute of Technology
California Lutheran University
California State Polytechnic, Pomona
California State Polytechnic, San Luis Obispo
Chapman University
Concordia University Irvine
Loyola Marymount University
Occidental College
Otis College of Art and Design
Pepperdine University
Point Loma Nazarene University
Pomona College
San Diego Christian College
Stanford University
University of California, Berkeley
University of California, Davis
University of California, Irvine
University of California, Los Angeles
University of California, Riverside
University of California, San Diego
University of California, Santa Barbara
University of California, Santa Cruz
University of Southern California
Westmont College

Colorado

United States Air Force Academy

Connecticut

University of Connecticut
Yale University

Florida

Embry-Riddle Aeronautical
University

Georgia

Emory University
Georgia Tech University

Illinois

Northwestern University
School of the Art Institute of Chicago
University of Illinois,
Urbana-Champaign
Wheaton College

Indiana

Purdue University
University of Notre Dame

Massachusetts

Berklee College of Music
Boston College
Boston University
Emerson College
Harvard University
Massachusetts Institute of Technology
New England Conservatory of Music
Northeastern University
Smith College
Tufts University

Maryland

Johns Hopkins University
Maryland Institute College of Art

Michigan

University of Michigan

New Jersey

Monmouth University
Princeton University
Seton Hall

New York

Columbia University
Cornell University
New York University
Parsons School of Design
Rensselaer Polytechnic Institute
School of Visual Arts
Stony Brook University
Syracuse University
The Juilliard School
United States Military
Academy, West Point
University of Rochester

North Carolina

Duke University
Elon University
University of North Carolina,
Chapel Hill

Ohio

Case Western Reserve University
Ohio State University

Oregon

University of Oregon

Pennsylvania

Carnegie Mellon University
Lehigh University
Penn State
University of Pennsylvania
Villanova University

Rhode Island

Brown University
Rhode Island School of Design

Tennessee

Belmont University
Lipscomb University
Vanderbilt University

Texas

Baylor University
Rice University
Southern Methodist University
Texas A&M University
Texas Christian University
University of Texas, Austin

Virginia

College of William and Mary

Washington

Gonzaga University
Pacific Lutheran University
University of Washington

Washington DC

Catholic University of America
George Washington University

Wisconsin

Marquette University
University of Wisconsin, Madison

Japan

Keio University
Waseda University

Korea

Korea Advanced Institute of
Science and Technology (KAIST)
Korea University
Seoul National University
Yonsei University

CLASS OF 2021



**WERE ACTIVE MEMBERS
OF THE NATIONAL
HONOR SOCIETY**



**WERE ACTIVE MEMBERS
OF THE CALIFORNIA
SCHOLARSHIP FEDERATION**

**AVERAGE
SCHOLARSHIP OFFER
PER STUDENT** | **\$35,000**

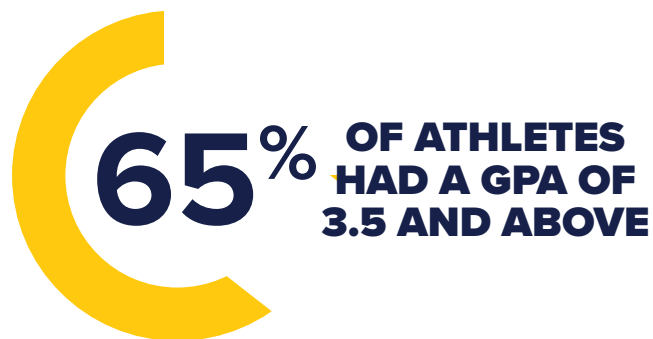
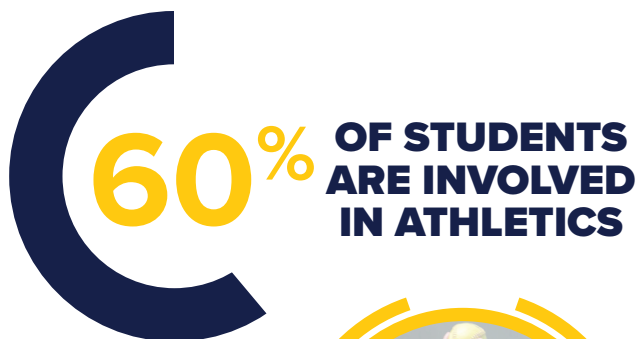


ATHLETICS

Crean Lutheran offers a collegiate-model athletic program aimed at developing competitive student-athletes who play for God's glory. Saints athletics is founded upon six core values firmly rooted in the acrostic **CHRIST: Commitment, Honor, Responsibility, Integrity, Service, and Teamwork**. Crean Lutheran High School is a member of the Empire League in CIF's Southern Section and offers 26 varsity sports. To ensure student safety and success, Crean Lutheran High School athletics provides multiple services and amenities, including expanded academic support, a comprehensive strength and performance program, and a sports medicine program. Additionally, Crean Lutheran's CIF-certified coaching staff assists with the college recruitment process for those student-athletes who desire to compete at the collegiate level.

STRENGTH & PERFORMANCE

All Crean Lutheran athletes have access to collegiate-level weight training in the state-of-the-art strength & performance center. Our dedicated strength & performance coaches design workouts that emphasize overall optimal athletic performance as well as sport-specific excellence. Even more, the coaches fine tune workouts to meet individual needs, adjusting to level of ability, specific training goals, and injury avoidance/recovery. Our exceptional facilities and knowledgeable coaches help all athletes rise to their full athletic potential.



SUMMER SPORTS TRAINING

Crean Lutheran offers summer sports training for all student-athletes. This program allows students the opportunity to form strong bonds with future teammates, gain confidence, and practice before the school year begins.

For questions regarding Crean Lutheran High School Athletics, please contact our Athletics Department at athletics@creanlutheran.org.

TEAMS

Fall

Football
Girls Tennis
Girls Volleyball
Girls & Boys Cross Country
Girls Golf
Boys Water Polo
Boys Beach Volleyball

Winter

Girls Basketball
Boys Basketball
Girls Soccer
Boys Soccer
Girls Water Polo

Spring

Boys Golf
Baseball
Softball
Girls & Boys Swimming & Diving
Boys Tennis
Girls & Boys Track & Field
Boys Lacrosse
Traditional Competition Cheer
Boys Volleyball
Girls Beach Volleyball

Year Round

Sideline Cheer
Song

2020-21 ACCOLADES



Boys Golf
won the
Empire League Title.



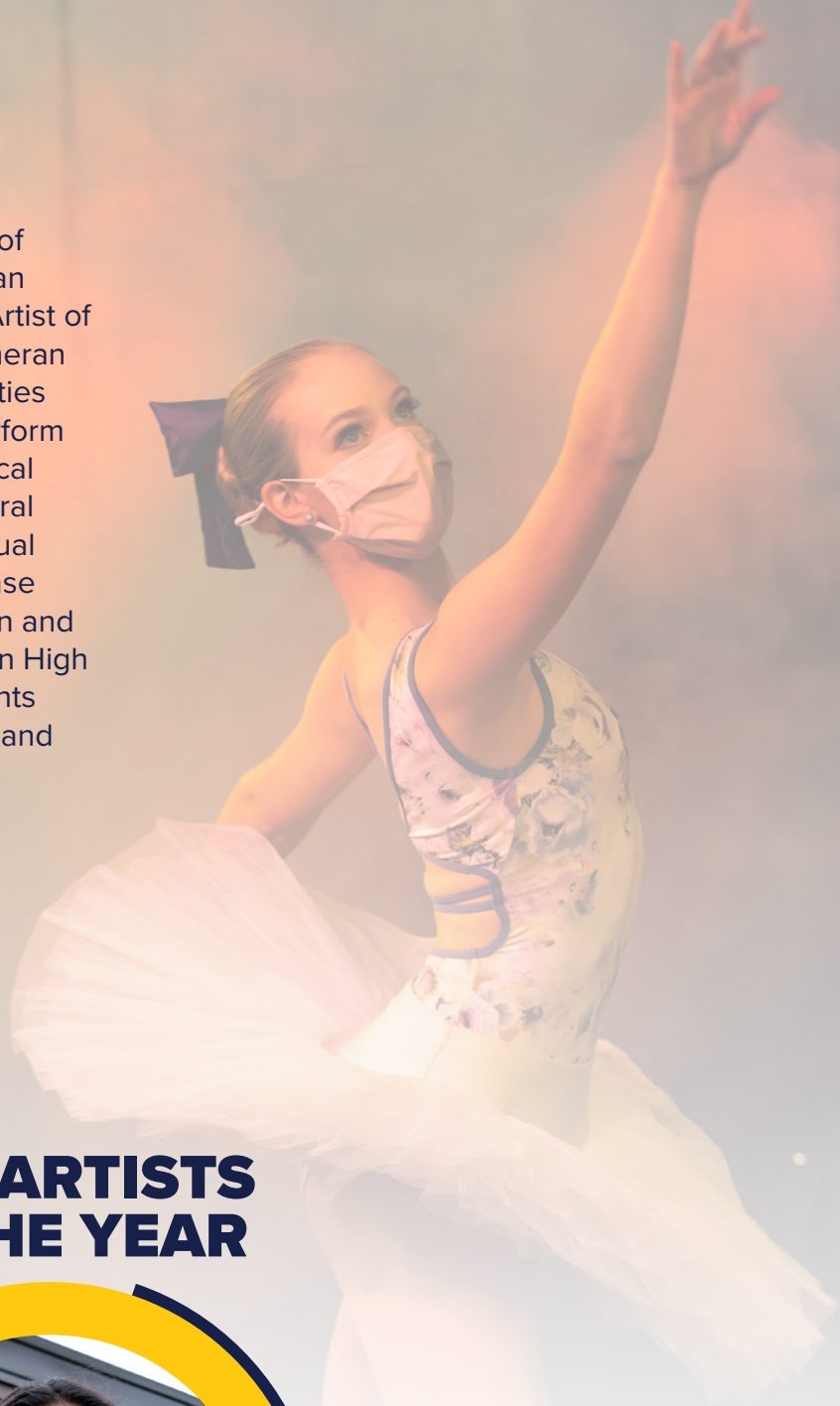
In Girls Swimming, **Masen Karsten** won the CIF-SS Championship in the 50m freestyle. **Ruth Harkins, Sophia Guntrip, Morgan Kampfer, and Masen Karsten** won the CIF-SS Championship in the 200m medley.



Boys Basketball won the Empire League Title, CIF Division 2 Title, and finished as the State Runner-Up.

ARTS

Crean Lutheran High School supports the Visual and Performing Arts (VPA) by developing the individual creative gifts of each artist. In 2021, three Crean Lutheran students were named Orange County Artist of the Year by the OC Register. Crean Lutheran is pleased to provide diverse opportunities for VPA engagement. Students may perform in a variety of settings, including theatrical productions, instrumental concerts, choral concerts, and dance performances. Visual artists are afforded platforms to showcase their talents through exhibitions, both on and off-campus. Additionally, Crean Lutheran High School is committed to providing students with real-world experiences to develop and refine their respective gifts and crafts.



2021 ARTISTS OF THE YEAR



Mia Diaz was named the OC Register's **Overall Artist of the Year in Computer-Assisted Visual Arts.**

Peter Chen was named the OC Register's Artist of the Year in the Specialty of Photography.



Sarah Liu was named the OC Register's Artist of the Year in the Specialty of Piano and Strings.

30%
OF STUDENTS ARE INVOLVED IN PERFORMING ARTS

COURSES OFFERED

Instrumental Music

Concert Band
Honors Concert Band
Honors Music Composition
Honors Symphony Orchestra
Jazz Band
Honors Jazz band
String Orchestra
Honors String Orchestra
Worship Team
Honors Worship Team

Dance

Dance I
Honors Dance II*
Honors Dance III*
Honors Advanced Dance Ensemble*
Honors Advanced Dance Company*
Hip Hop I
Honors Hip Hop II*
Honors Hip Hop III*

Drama

Acting for Stage and Camera I
Honors Acting for Stage and Camera II*

Choir

Concert Choir*
Honors Concert Choir*
Honors Chamber Choir*
Men's Chorus
Women's Chorus
Handbell Choir
AP Music Theory*

Visual Arts

Photography I
Honors Photography II*
Exploratory Art
Honors Exploratory Art*
Honors Advanced Studio Art*
Honors Drawing & Painting*
Honors Sculpture I*
Honors Sculpture II*
AP Art: Drawing and Painting*
AP Art: 2-D*
AP Art: 3-D*
AP Art History

**audition required*



ADMISSIONS

APPLICATION STEPS

The Admissions Committee reviews each applicant holistically, taking into account the unique gifts and talents of each student.

1

Complete the online application and submit the \$60.00 application fee. There is a link to apply on our website: creanlutheran.org/apply.

2

Complete the application checklist in the student application portal.

Application Deadline for the 2022-2023 School Year is **January 14, 2022.***

**After this date, admission to Crean Lutheran High School will be on a rolling basis, space permitting.*

FINANCIAL ASSISTANCE

Crean Lutheran High School views financial aid as a partnership between families and the school. Financial aid awards are based on financial need and the financial aid funds available. To be considered for financial aid, a family must first apply for admission and then submit a financial aid application, which can be found at creanlutheran.org/admissions.

TUITION & FEES

The Crean Lutheran Board of Directors, administration, faculty, and staff value Christian stewardship. Accordingly, tuition dollars are a blessing that Crean Lutheran strives to use wisely and efficiently to avoid unnecessary increases. The scheduled tuition for the 2022-2023 school year is **\$19,210**.

Additional costs include a registration fee, books, uniforms, and special program fees. Crean Lutheran estimates books will cost an average of \$420 per year, and uniforms will likely cost an initial \$400-500. Athletic, Performing Arts, Cohorts, and other program fees vary. A summary of tuition and fees can be found at creanlutheran.org/tuition.

BE A

S



A



I



N



T



FOR A DAY!

Crean Lutheran High School cordially invites all 8th grade and transfer students interested in attending Crean Lutheran to spend a day on campus. Prospective students will be partnered with student ambassadors who will introduce them to the Crean Lutheran community. To register for a shadow visit, please go to creanlutheran.org/shadow.

For any questions regarding admission to Crean Lutheran High School, please contact the Admissions Department at (949) 387-1199 or email admissions@creanlutheran.org.

For questions regarding international admission, please email int@creanlutheran.org.



SAINTS STADIUM



**CREAN LUTHERAN
HIGH SCHOOL**

12500 Sand Canyon Avenue, Irvine, CA 92618
(949) 387-1199 • creanlutheran.org