



Park Hill School District

Building Successful Futures • Each Student • Every Day

DEMOGRAPHIC PROFILE & ENROLLMENT PROJECTIONS



2021-2022

Prepared by the Business Services Department
of the Park Hill School District &
Business Information Services, LLC
Spring, 2021



Park Hill School District

Building Successful Futures • Each Student • Every Day

2020-2021 Demographic Profile of the Park Hill School District

March 2021

Park Hill Board of Education

President, Kimberlee Ried

Vice President, Janice Bolin

Treasurer, Scott Monsees

Member, Todd Fane

Member, Bart Klein

Member, Susan Newburger

Member, Kyla Yamada

Superintendent of Schools, Dr. Jeanette Cowherd

Secretary to the Board, Opal Hibbs

Prepared by the
Business Services Department of the Park Hill School District &
Business Information Services, LLC

This document is available for download at
<http://www.parkhill.k12.mo.us/>
District Information - Data and Reports - Demographic Profile



Park Hill School District

Building Successful Futures • Each Student • Every Day

This Page Left Intentionally Blank

TABLE OF CONTENTS

EXECUTIVE SUMMARY	5
INTRODUCTION	6
About The 2020-2021 Demographic Profile & Enrollment Projections	6
About the Park Hill School District	7
District Geography	8
District Municipalities	9
District Maps	10
Map of Area School Districts	11
Map of Park Hill School District Municipalities.....	12
Aerial Overview Map of Park Hill School District.....	13
Zip Codes Within Park Hill School District Boundaries	14
Map of Park Hill School District Boundaries	15
Map of Missouri School Districts by County Boundaries.....	16
2019-2020 Statistics of Missouri Public Schools	17
Demographic Comparisons – State of Missouri Public Schools	19
Twenty-Five Largest School Districts in Missouri (Enrollment)	19
Largest School Districts in Missouri (Geographic)	20
Demographic Comparisons – Benchmark School Districts	22
Benchmark Demographic Data – 2020-2021 Preliminary K-12 Enrollment	22
Benchmark Demographic Data – K-12 Enrollment	23
Benchmark Demographic Data – K-12 Enrollment Growth.....	24
Benchmark Demographic Data – K-12 Enrollment – COVID Impact.....	25
Benchmark Population Data	26
Benchmark Household Data	27
Benchmark School Finance Data	28
STUDENT ENROLLMENT	31
Historical Enrollment Data	31
Student Enrollment Table by Grade – 25-Year Historical	32
K-12 Student Enrollment Chart– 25-Year Historical	33
Annual Growth in K-12 Student Enrollment – 25-Year Historical.....	34
Current Enrollment	35
K-12 Student Program Enrollment.....	37
Change In K-12 Student Program Enrollment From Prior Year.....	38
K-12 Enrollment by School (Resident Enrollment)	39
Park Hill School District Grade Level Distribution.....	40
Park Hill School District Cohort Size Analysis.....	41

Park Hill School District Student Geographic Distribution	42
Park Hill School District Student Enrollment Density	43
Park Hill School District Grade Level Distribution and Cohort Growth Since Kindergarten	44
Park Hill School District Current Senior Class Cohort Growth – Kindergarten Through 12 th Grade	45
Park Hill School District Diversity of Enrollment.....	46
Park Hill School District Change in Diverse Populations	47
Park Hill School District Diverse Populations by School	48
Park Hill School District Growth in Free and Reduced Lunch Population*	49
Park Hill School District Free and Reduced Lunch Population by School*	50
Park Hill School District Mobility Data	51
SUPPORTING DEMOGRAPHIC DATA.....	55
Platte County Live Birthrates and Kindergarten Enrollments	55
Collecting Birthrate Data	55
Birthrate and Kindergarten Class Size Data	55
Household Data	56
New Households Within The School District – 10-Year History.....	57
School-Age Children Within Park Hill School District Households.....	58
FUTURE ENROLLMENT PROJECTIONS.....	59
Projection Methods	59
Cohort Survival Method.....	59
Household Projections Method.....	63
Student Enrollment Projections	64
Student Enrollment Projection Summary – Tables.....	64
Student Enrollment Projection Summary – Graph	67
Facility Planning.....	68
Planning Criteria	68
Long-Range Facility Plan	71
School Capacity Analysis.....	72
Future District Growth Trends.....	76
Estimated Population of the Park Hill School District Communities	77
Estimated Rate of Change in Population	78
Estimated Children Under the Age of 5	79
Estimated Change In Number of Children Under the Age of 5.....	80

EXECUTIVE SUMMARY

The Demographic Profile & Enrollment Projections of the Park Hill School District is produced annually to assist school district leaders and planners in annual budgeting, review of district attendance boundaries, and long-range planning efforts.

The following reflects some of the significant data points found within the 2020-2021 Demographic Profile:

- Park Hill's K-12 student enrollment for 2020-2021 is 11,698. This is a 0.09% decrease from the prior year and the first time K-12 enrollment has decreased since the 1983-1984 school year.
- Park Hill's kindergarten cohort is 812. The district had planned for 891 kindergarteners based on prior year projection models. This smaller than anticipated kindergarten cohort is consistent with local and national enrollment trends for the 2020-2021 school year. Smaller kindergarten cohorts are attributed to the impact of COVID on student enrollment.
- The estimated population of the communities that make up Park Hill School District is 73,569 with the populations within the municipality of the city of Kansas City and the unincorporated portions of Platte County making up over 80% of the population. This makes approximately 16% of the district population school age.
- Based on 2020-2021 K-12 enrollment, Park Hill School District is the 16th largest school district in Missouri. Since 2017-2018, the Park Hill School District has moved from 18th largest to 16th largest school district in Missouri, surpassing the St. Joseph and Fox C-6 school districts in total student enrollment.
- Of twelve suburban Kansas City, Missouri school districts . . .
 - Liberty (+2,173), North Kansas City (+2,146), and Park Hill School District (+2,209) have grown by the highest number of students over the last 10 years.
 - Park Hill ranks first in estimated median home value (\$271,565).
 - Park Hill has the third lowest total tax levy (\$5.3955).
 - Park Hill ranks second in estimated college graduates or professional degrees within the district population (52.3%).
- Five of thirteen grade levels in 2020-2021 are at their highest enrollment ever (5, 7, 8, 9 and 12). Total aggregate enrollment in middle school grades (6-8) and high school grades (9-12) are at historical highs.
- 2021-2022 elementary school program enrollments range from 361 (Line Creek) to 568 (Union Chapel). Middle school enrollments range from 660 (Lakeview) to 730 (Walden). The enrollment difference between Park Hill High School (1,557) and Park Hill South (1,547) is 10 students.
- The ethnic diversity of student enrollment continues to increase with diverse populations currently making up 33.9% of the total student enrollment (an all-time high).
- The percentage of students qualifying for free and reduced lunch through the National School Lunch Program decreased significantly from 27.1% in 2019-2020 to 20.5% in 2020-2021. This significant decrease in free and reduced lunch qualification is consistent with a local and national trend for the 2020-2021 school year. The decrease is attributed to the federal CARES Act which funds free school lunch for all students for the 2020-2021 school year (due to COVID). Because all students eat lunch for free, there is less need for families to complete the documentation to qualify for the program. This value is expected to increase in future years.
- The mobility of students increased slightly from prior years. Currently, 10.5% of students have been in the school district less than one year, and 20.1% less than two years. This statistic excludes kindergarteners and first graders.

INTRODUCTION

ABOUT THE 2020-2021 DEMOGRAPHIC PROFILE & ENROLLMENT PROJECTIONS

The purpose of the *2020-2021 Demographic Profile & Enrollment Projections* of the Park Hill School District is to provide Park Hill School District patrons, business leaders, civic organizations and other interested persons detailed demographic and socioeconomic information about the Park Hill School District and Park Hill community. The demographic profile includes historical information, current trends, and future enrollment projections that assist district leaders in annual budgeting, review of district attendance boundaries, and long-range planning efforts.

Enrollment data presented in this report was compiled from Park Hill School District core data and through historical figures maintained by the Missouri Department of Elementary and Secondary Education. Data used in this report comes from multiple sources, including:

- 2010 decennial United States Census compiled by the United States Census Bureau
- Missouri Department of Health and Senior Services
- Missouri Spatial Data Information Service
- STI: POPSTATS projections from Synergos Technologies, Inc.

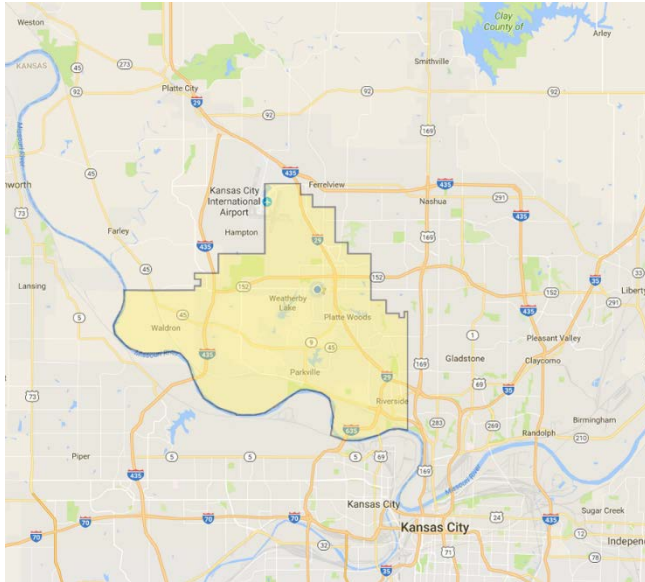
This report is divided into four major parts: (1) Introduction (2) Student Enrollment, (3) Supporting Demographic Data, and (4) Future Enrollment Projections.

ABOUT THE PARK HILL SCHOOL DISTRICT

Park Hill School District (PHSD) is a public school district, with pre-kindergarten (pre-K) programs through grade 12. The district includes eleven K-5 elementary schools, four 6-8 middle schools, two 9-12 high schools, a day treatment school (Russell Jones Education Center), and an Early Childhood Education Center (Gerner Family Early Education Center). Other support facilities include a district Aquatic Center, Support & Transportation Services, and the District Office. As a part of the district's long-range facility planning to support enrollment growth, the district opened the LEAD Innovation Studio in a new facility in fall 2020. This 9-12 high school program serves students from the existing two high schools. PHSD's Gerner Family Early Education Center (GFEEC) provides fee-based educational services for pre-K students (ages 3-5), early childhood special education (ECSE) students, and English Language Learners (ELL), Head Start, and supports Parents as Teachers (PAT).

PHSD also offers an array of community services including Adventure Club (Day Care), Community Education and a district natatorium (Aquatic Center).

DISTRICT GEOGRAPHY



The Park Hill School District, formally organized in 1951 under the provisions of Missouri’s School Reorganization Statute of 1948, encompasses 73 square miles located in the southern third of Platte County, located just north of downtown Kansas City, Missouri. The Missouri River forms the southern and western boundaries of the district and also delineates the state line between Missouri and Kansas. The northern boundary meanders in stair-step fashion from Northwest 76th Street and the Clay County line to Northwest 120th Street, the northern most point of the district. The northern boundary divides the Kansas City International Airport, with one of the three airport terminals lying within district

boundaries, and the remaining portions of the airport lying within the Platte County R-3 School District, the neighboring district to the north.



DISTRICT MUNICIPALITIES

Predominantly rural-oriented in the past, the district has steadily changed to a more suburban type district, blending both residential and commercial growth. Approximately 43% of the school district lies within the city limits of Kansas City, Missouri. There are seven other incorporated communities: Parkville, Lake Waukomis, Houston Lake, Northmoor, Riverside, Platte Woods, Weatherby Lake, and the unincorporated communities of Waldron and Platte County. The 2000 and 2010 U.S. Census counts for each of these communities is listed in the table below. In addition, estimates of the 2020 population, and projections for the 2030 population are provided.

Community	2000 Population	2010 Population	Estimated 2020 Population	% Growth 2000-2020	Projected 2030 Population	% Estimated Growth 2020- 2030
Kansas City (within Park Hill District only)	33,270	37,100	47,436	42.6%	56,201	18.5%
Houston Lake	284	235	187	-34.2%	213	13.9%
Lake Waukomis	918	870	829	-9.7%	1,008	21.6%
Northmoor	399	325	244	-38.8%	285	16.8%
Parkville	4,189	5,554	6,833	63.1%	7,695	12.6%
Platte Woods	474	385	905	90.9%	1,038	14.7%
Riverside	2,979	2,937	3,772	26.6%	4,408	16.9%
Weatherby Lake	1,873	1,723	1,782	-4.9%	2,034	14.1%
Unincorporated Platte County (estimated)	9,899	13,132	11,581	17.0%	13,234	14.3%
Park Hill School District	54,285	62,261	73,569	35.5%	86,116	17.1%

Estimated 2020 population analysis shows a 35.5% population growth in the Park Hill School District since 2000. This is strong, and nearly twice the national population growth rate during the last decade. Over 80% of the school district's population resides in the city of Kansas City and the unincorporated portion of the school district.

Homes that are presently being built range from \$150,000 to more than \$1,000,000, with the median home value of \$271,565.

DISTRICT MAPS

The following pages include the following maps of the Park Hill School District:

Map of Area School Districts. This map shows school districts that surround the Park Hill School District on both sides of the state line and the interstates.

Map of Park Hill School District Municipalities. This map shows the geography of the eight municipalities included within the Park Hill School District: Houston Lake, Kansas City, Lake Waukomis, Northmoor, Parkville, Platte Woods, Riverside and Weatherby Lake. Unincorporated sections of Platte County within the district boundaries are also included.

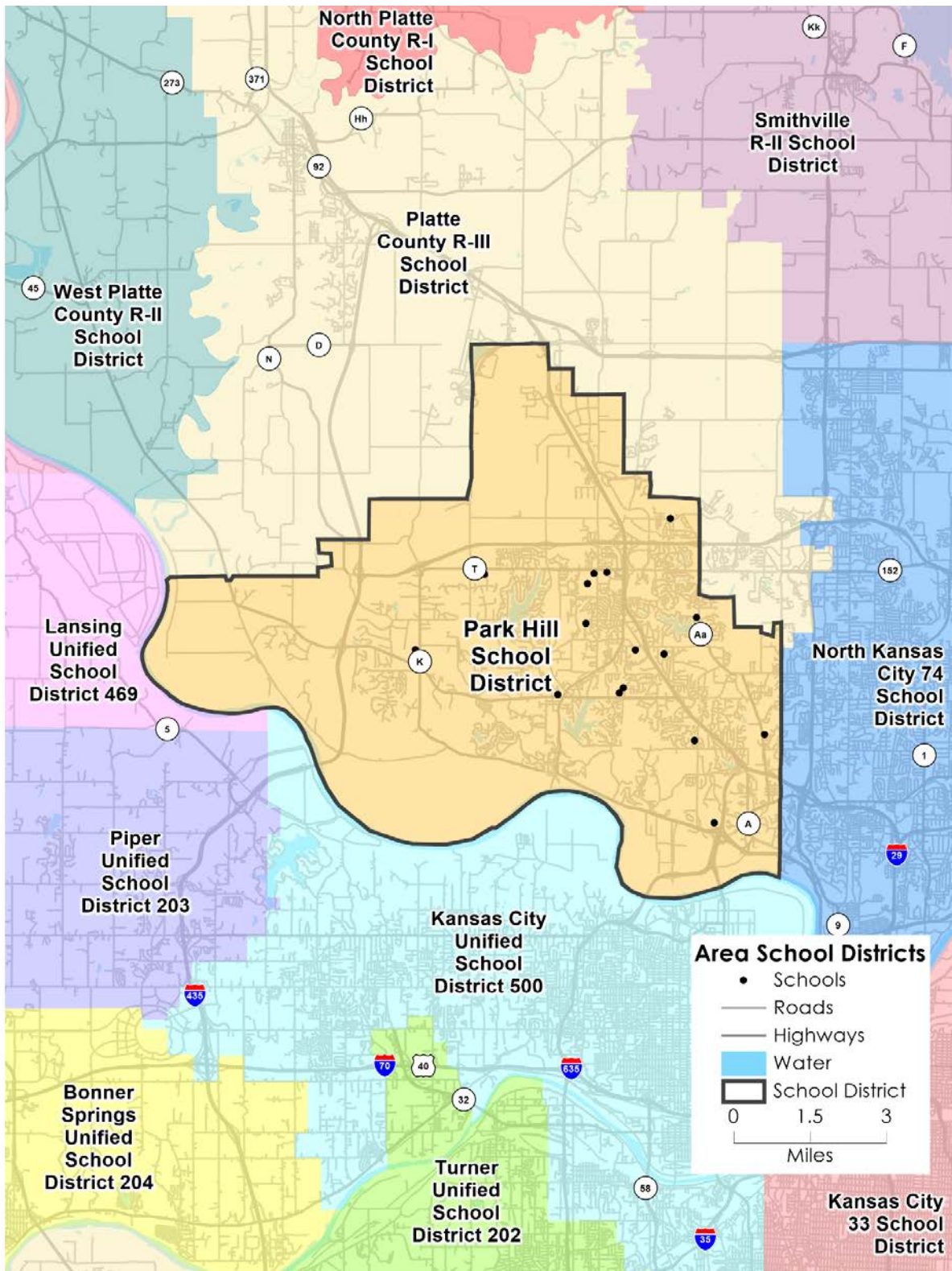
Aerial Overview Map of Park Hill School District. This map shows the aerial geography of the municipalities included within the Park Hill School District. Unincorporated sections of Platte County within the district boundaries are also included.

Zip Codes Within Park Hill School District Boundaries. This map overlays the United States Postal Service Zip Codes within the Park Hill School District.

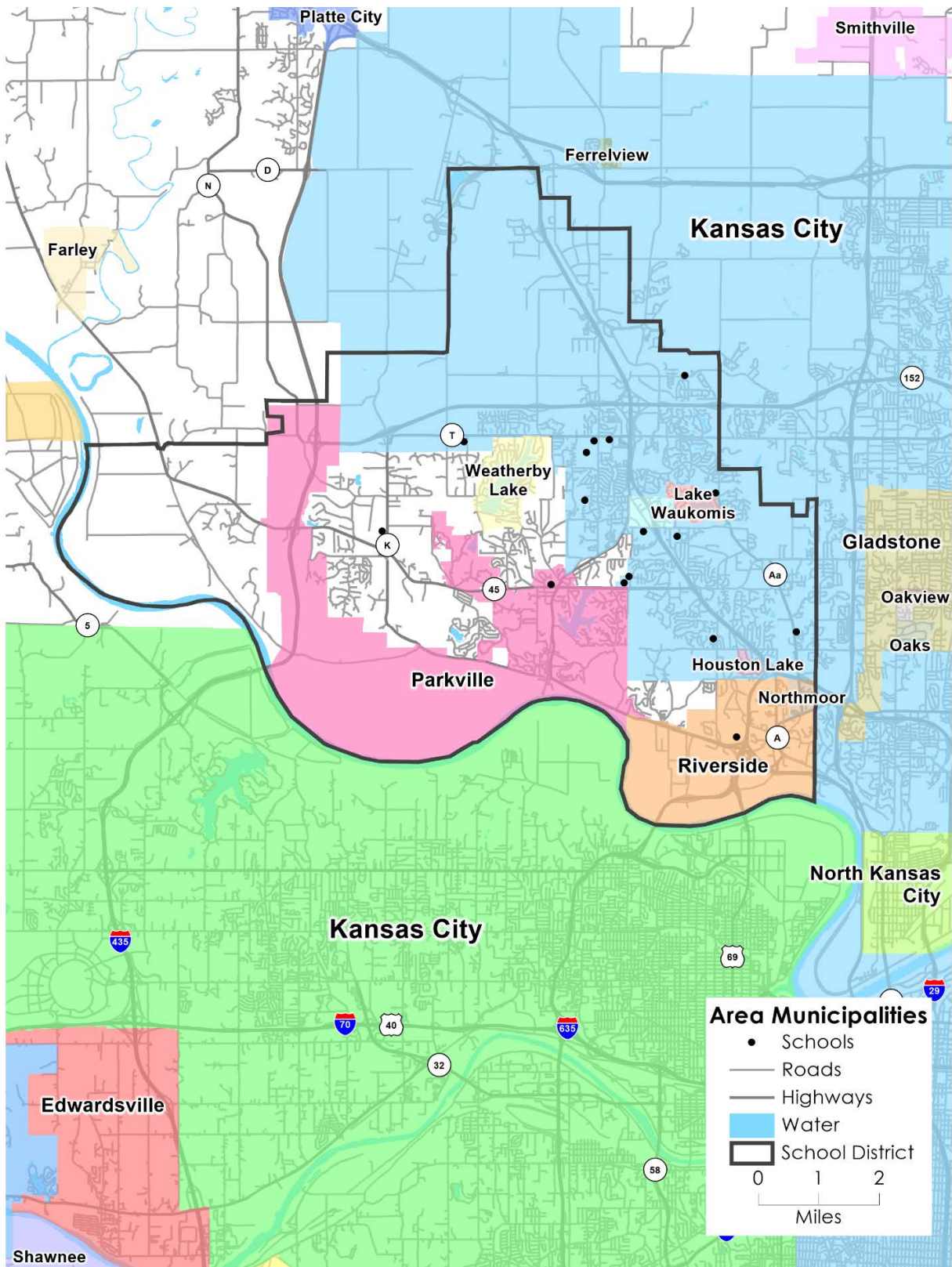
Map of Park Hill School District Boundaries. This map shows the Park Hill School District school boundaries as of July 2019 when the boundaries were last changed.

Map of Missouri School Districts by County Boundaries. This map shows Missouri school districts by county.

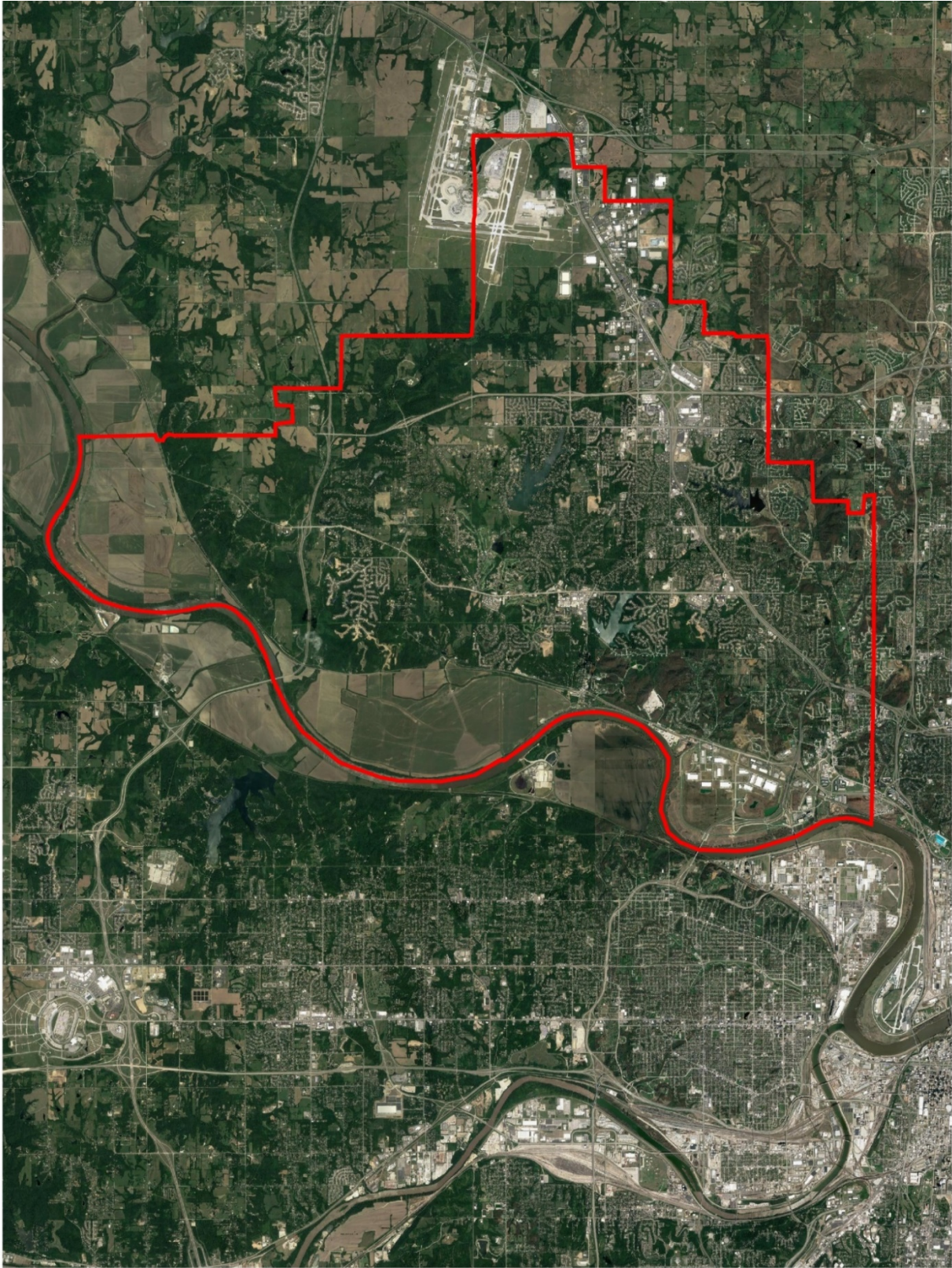
MAP OF AREA SCHOOL DISTRICTS



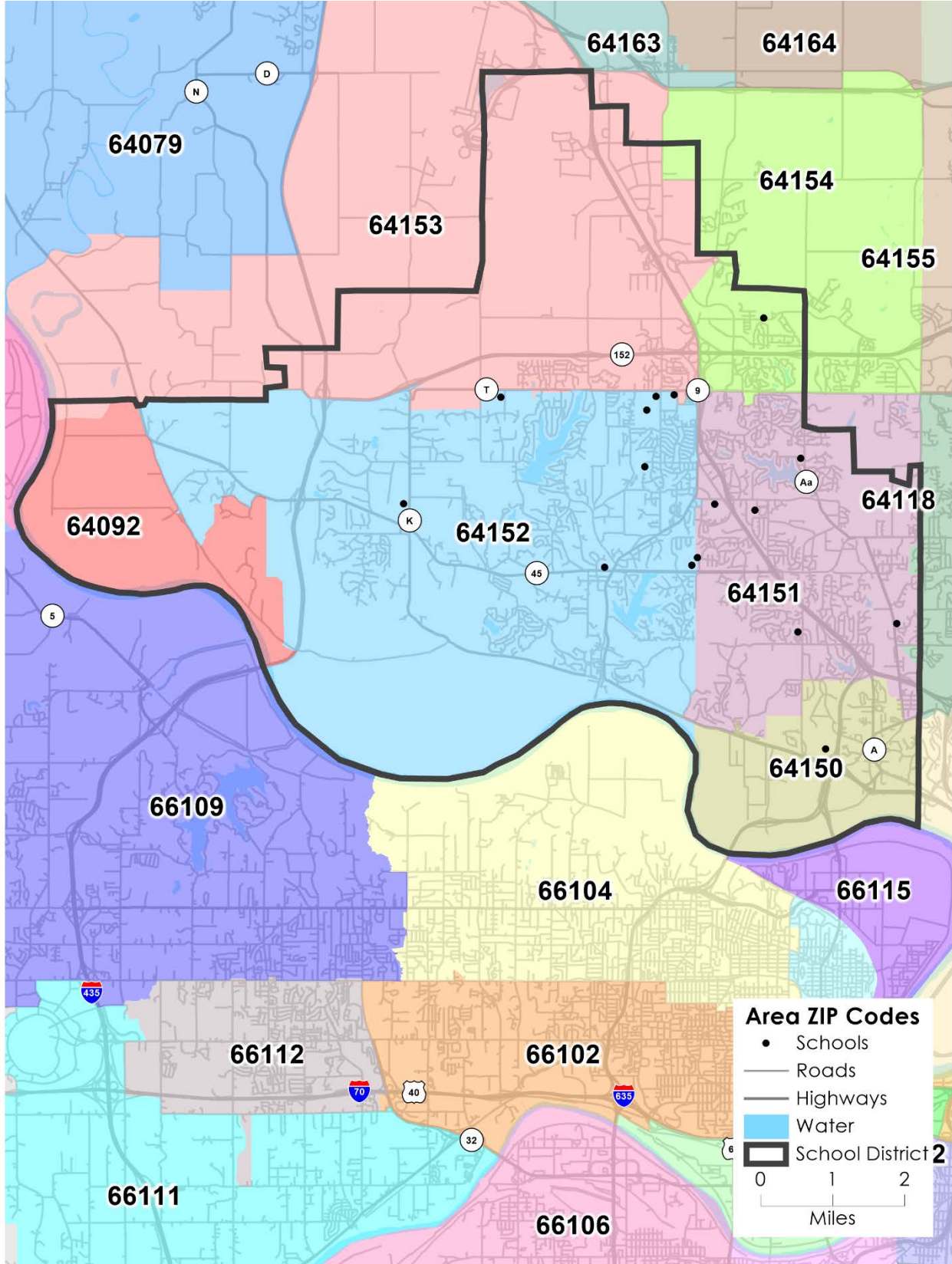
MAP OF PARK HILL SCHOOL DISTRICT MUNICIPALITIES



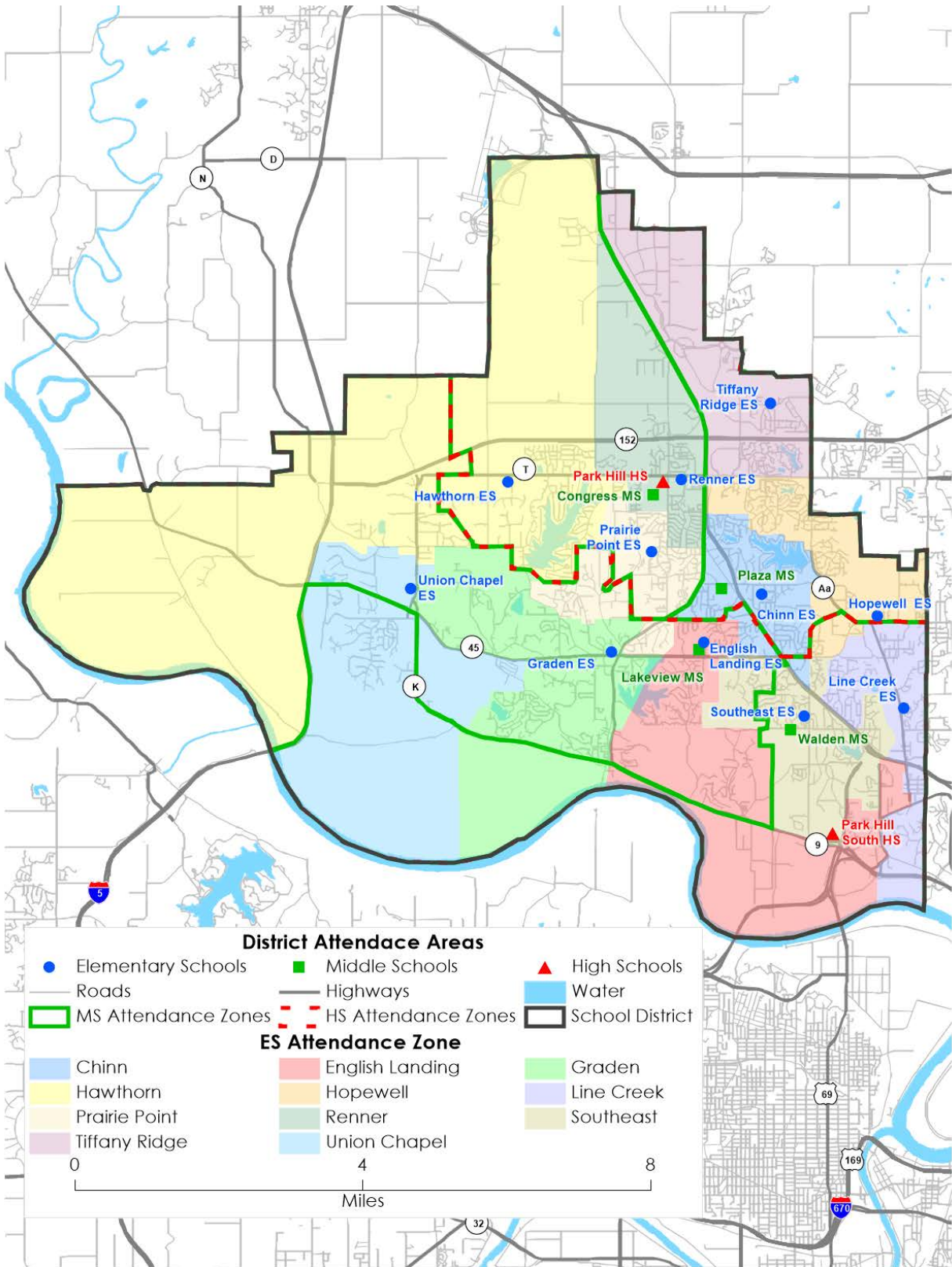
AERIAL OVERVIEW MAP OF PARK HILL SCHOOL DISTRICT



ZIP CODES WITHIN PARK HILL SCHOOL DISTRICT BOUNDARIES

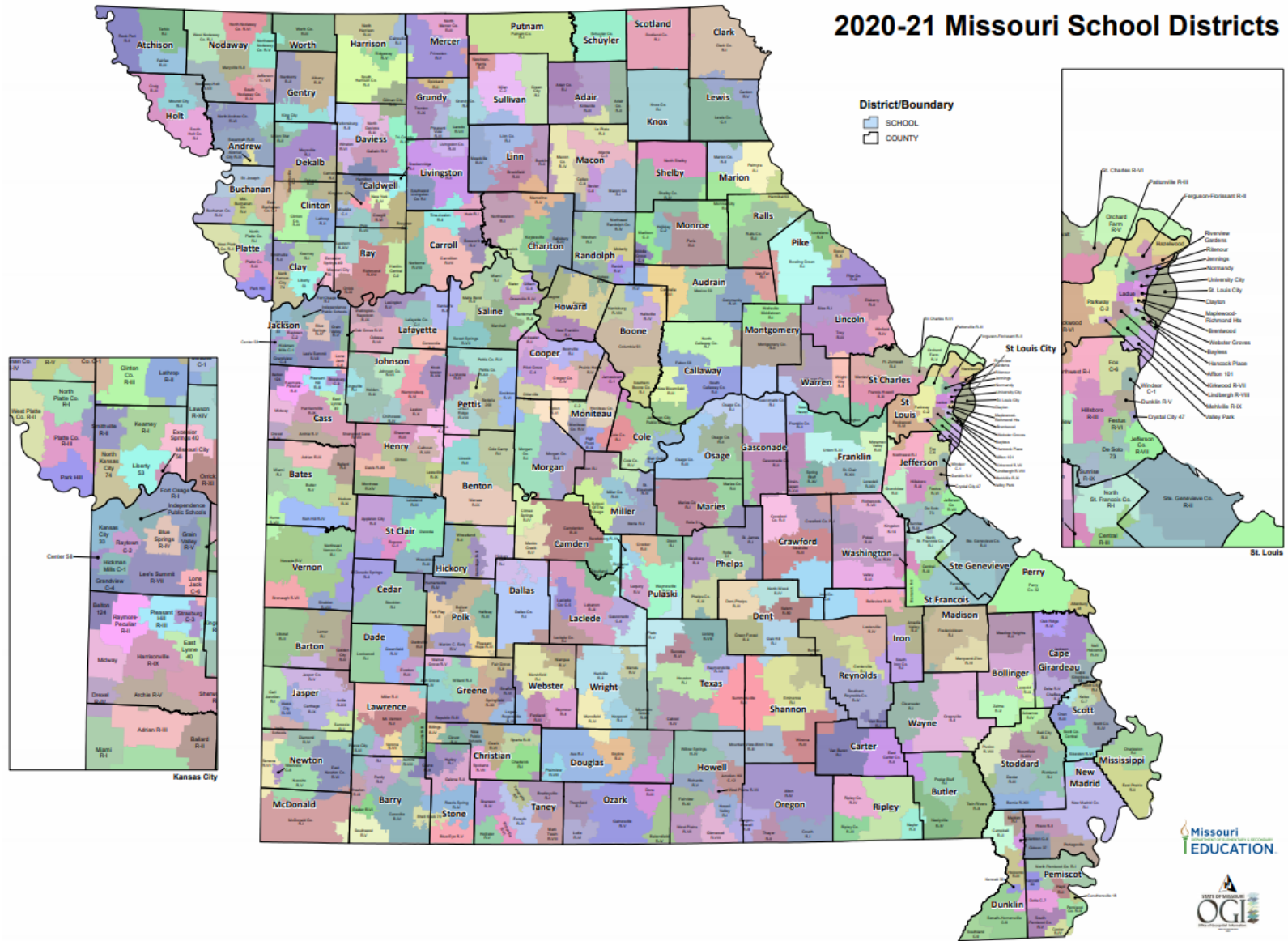


MAP OF PARK HILL SCHOOL DISTRICT BOUNDARIES



MAP OF MISSOURI SCHOOL DISTRICTS BY COUNTY BOUNDARIES

2020-21 Missouri School Districts



2019-2020 STATISTICS OF MISSOURI PUBLIC SCHOOLS

The data on the following page is published annually by the Missouri Department of Elementary and Secondary Education (DESE) at the conclusion of each school year. Data for 2020-2021 will not be made available until Fall 2021. This information is found at <https://apps.dese.mo.gov/MCDS/home.aspx> under "Missouri School Statistics".

DEMOGRAPHIC COMPARISONS – STATE OF MISSOURI PUBLIC SCHOOLS

According to the Missouri Department of Elementary and Secondary Education (DESE) data collection, the state of Missouri educates 879,845 students within 554 school districts and charter schools. The Park Hill School District currently ranks as the 16th largest school district in the state with a 2020-2021 preliminary official K-12 enrollment of 11,682 (preliminary value reported to the state), and a pre-K to 12 enrollment of 11,986.

Park Hill School District was also the 16th largest Missouri public school district in the prior year (2019-2020).

TWENTY-FIVE LARGEST SCHOOL DISTRICTS IN MISSOURI (ENROLLMENT)

Rank	School District	2020-2021 K-12 Enrollment	2020-2021 Pre-K-12 Enrollment
1	039141 - SPRINGFIELD R-XII	23,160	23,866
2	024093 - NORTH KANSAS CITY 74	20,258	20,776
3	096091 - ROCKWOOD R-VI	20,212	20,607
4	115115 - ST. LOUIS CITY	18,238	19,460
5	010093 - COLUMBIA 93	17,706	18,148
6	048071 - LEE'S SUMMIT R-VII	17,507	17,803
7	092087 - FT. ZUMWALT R-II	17,099	17,324
8	092089 - WENTZVILLE R-IV	17,074	17,417
9	096095 - PARKWAY C-2	17,033	17,033
10	092088 - FRANCIS HOWELL R-III	16,488	16,986
11	096088 - HAZELWOOD	16,032	16,517
12	048068 - BLUE SPRINGS R-IV	14,533	14,699
13	048077 - INDEPENDENCE 30	13,767	14,361
14	048078 - KANSAS CITY 33	13,343	14,122
15	024090 - LIBERTY 53	12,563	12,806
16	083005 - PARK HILL	11,682	11,986
17	050012 - FOX C-6	10,901	11,006
18	011082 - ST. JOSEPH	10,476	10,672
19	096094 - MEHLVILLE R-IX	9,765	9,971
20	096089 - FERGUSON-FLOISSANT R-II	9,090	9,518
21	026006 - JEFFERSON CITY	8,579	8,778
22	048073 - RAYTOWN C-2	7,826	8,051
23	049148 - JOPLIN SCHOOLS	7,467	7,664
24	096093 - LINDBERGH SCHOOLS	7,070	7,252
25	057003 - TROY R-III	6,320	6,534

LARGEST SCHOOL DISTRICTS IN MISSOURI (GEOGRAPHIC)

At 73.2 square miles, Park Hill School District ranks as the 374th largest school district geographically. The largest school district geographically in Missouri is Putnam County R-1 (507 square miles); a rural school district located near the Missouri-Iowa border in North Central Missouri.

GEOGRAPHIC AREA (SQUARE MILES)

Rank	District	Area (Sq Miles)
1	086100 - PUTNAM CO. R-I	507.0
2	052096 - KNOX CO. R-I	499.0
3	075087 - ALTON R-IV	493.1
4	023101 - CLARK CO. R-I	492.0
5	111086 - GREENVILLE R-II	482.0
6	072074 - NEW MADRID CO. R-I	469.8
7	099082 - SCOTLAND CO. R-I	435.0
8	060077 - MCDONALD CO. R-I	428.5
9	079077 - PERRY CO. 32	413.8
10	056017 - LEWIS CO. C-1	412.3
11	030093 - DALLAS CO. R-I	378.7
12	082100 - BOWLING GREEN R-I	374.8
13	037039 - GASCONADE CO. R-I	370.6
14	008107 - WARSAW R-IX	362.0
15	108142 - NEVADA R-V	359.2
16	034124 - AVA R-I	358.0
17	037037 - GASCONADE CO. R-II	356.8
18	107153 - SUMMERSVILLE R-II	355.9
19	041002 - SOUTH HARRISON CO. R-II	350.1
20	095059 - STE. GENEVIEVE CO. R-II	347.9
21	062072 - FREDERICKTOWN R-I	345.3
22	077102 - GAINESVILLE R-V	340.6
23	101107 - EMINENCE R-I	338.5
24	090076 - SOUTHERN REYNOLDS CO. R-II	335.0
25	015002 - CAMDENTON R-III	334.1
...		
374	083005 - PARK HILL	73.2

STUDENT DENSITY (STUDENTS PER SQUARE MILES)

Park Hill School District ranks 34th in student density (163.8 PreK-12 students per square mile). Clayton School District, in central St. Louis, ranks the highest in student density (808.5 PreK-12 students per square mile).

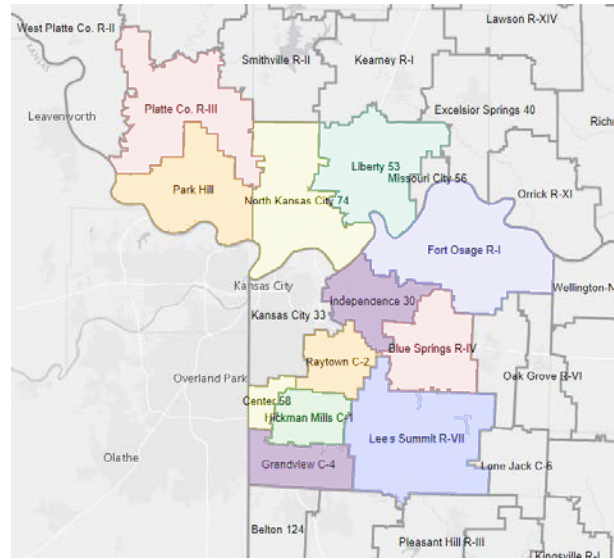
Rank	District	Students Per Sq mile
1	096102 - CLAYTON	808.5
2	096104 - JENNINGS	676.2
3	096103 - HANCOCK PLACE	633.1
4	096099 - BAYLESS	627.7
5	096110 - RITENOUR	596.7
6	096111 - RIVERVIEW GARDENS	542.7
7	096114 - WEBSTER GROVES	535.4
8	096107 - MAPLEWOOD-RICHMOND HEIGHTS	513.8
9	096098 - AFFTON 101	423.8
10	096112 - UNIVERSITY CITY	411.8
11	096092 - KIRKWOOD R-VII	395.2
12	096101 - BRENTWOOD	376.5
13	096089 - FERGUSON-FLORISSANT R-II	376.0
14	048077 - INDEPENDENCE 30	336.4
15	096093 - LINDBERGH SCHOOLS	297.6
16	115115 - ST. LOUIS CITY	294.5
17	092090 - ST. CHARLES R-VI	262.7
18	096109 - NORMANDY SCHOOLS COLLABORATIVE	261.9
19	048068 - BLUE SPRINGS R-IV	259.7
20	048073 - RAYTOWN C-2	250.5
21	096095 - PARKWAY C-2	242.8
22	096090 - PATTONVILLE R-III	239.9
23	096094 - MEHLVILLE R-IX	238.1
24	024093 - NORTH KANSAS CITY 74	237.8
25	096106 - LADUE	236.6
...		
34	083005 - PARK HILL	163.8

DEMOGRAPHIC COMPARISONS – BENCHMARK SCHOOL DISTRICTS

The Park Hill School District utilizes eleven other suburban Kansas City, Missouri school districts to benchmark statistics throughout the organization, including Academic Services (i.e., student achievement scores), Human Resources (i.e., employee compensation), and Business Services (i.e., tax rates). The following tables compare Park Hill to these benchmark districts in various demographic categories. This data is collected by the Missouri Department of Elementary and Secondary Education and the U.S. Census Bureau.

The benchmark school districts are:

- 024090 - LIBERTY 53
- 024093 - NORTH KANSAS CITY
- 048066 - FORT OSAGE R-I
- 048068 - BLUE SPRINGS R-IV
- 048071 - LEE'S SUMMIT R-VII
- 048072 - HICKMAN MILLS C-1
- 048073 - RAYTOWN C-2
- 048074 - GRANDVIEW C-4
- 048077 - INDEPENDENCE 30
- 048080 - CENTER 58
- 083003 - PLATTE CO. R-III
- 083005 - PARK HILL



BENCHMARK DEMOGRAPHIC DATA – 2020-2021 PRELIMINARY K-12 ENROLLMENT

District	Area (Sq Miles)	K-12 Enrollment (preliminary DESE values)
024090 – LIBERTY 53	82.6	12,563
024093 – NORTH KANSAS CITY	87.4	20,258
048066 – FORT OSAGE R-I	118.4	4,752
048068 – BLUE SPRINGS R-IV	56.6	14,533
048071 – LEE’S SUMMIT R-VII	116.4	17,507
048072 – HICKMAN MILLS C-1	30.4	4,858
048073 – RAYTOWN C-2	32.1	7,826
048074 – GRANDVIEW C-4	38.2	3,637
048077 – INDEPENDENCE 30	42.7	13,767
048080 – CENTER 58	11.6	2,416
083003 – PLATTE CO. R-III	99.4	4,205
083005 – PARK HILL	73.2	11,682

BENCHMARK DEMOGRAPHIC DATA – K-12 ENROLLMENT

The following data is compiled from Missouri’s Department of Elementary and Secondary Education (DESE) reported by school districts for the 2019-2020 school year. Final 2020-2021 data for all Missouri school districts will become available from DESE in October, 2021.

District	2019-2020 K-12 Enrollment	% Asian	% Black	% Hispanic	% Indian	% Multi Racial	% Pacific Islander	% Non White	% White	% Free / Reduced Lunch	% ELL LEP	% IEP
024090 - LIBERTY 53	12,552	2.7%	5.2%	7.7%	0.3%	6.0%	0.2%	21.7%	78.0%	19.2%	1.4%	10.2%
024093 - NORTH KANSAS CITY	20,434	3.3%	14.2%	14.7%	0.3%	10.6%	1.2%	44.1%	55.6%	47.1%	6.6%	11.4%
048066 - FORT OSAGE R-I	4,900	1.0%	9.9%	10.7%	0.7%	2.6%	2.3%	26.6%	72.7%	52.9%	1.4%	11.6%
048068 - BLUE SPRINGS R-IV	14,488	2.2%	11.2%	7.9%	0.4%	6.8%	0.4%	28.5%	71.1%	28.3%	0.8%	11.7%
048071 - LEE'S SUMMIT R-VII	17,907	2.3%	12.2%	3.2%	0.2%	6.8%	0.2%	24.7%	75.0%	19.3%	1.7%	9.2%
048072 - HICKMAN MILLS C-1	5,099	2.1%	69.1%	13.3%	0.3%	5.7%	0.3%	90.5%	9.2%	0.0%	8.1%	13.3%
048073 - RAYTOWN C-2	8,227	1.0%	49.4%	14.1%	0.4%	8.6%	0.4%	73.4%	26.2%	64.9%	4.8%	15.2%
048074 - GRANDVIEW C-4	4,101	0.7%	50.5%	23.2%	0.3%	5.1%	0.0%	79.5%	20.1%	77.6%	11.0%	12.6%
048077 - INDEPENDENCE 30	14,154	0.8%	13.6%	21.2%	0.5%	8.7%	0.9%	45.3%	54.2%	70.2%	7.9%	10.0%
048080 - CENTER 58	2,522	1.2%	60.7%	9.8%	0.4%	8.8%	0.0%	80.5%	19.0%	73.4%	5.8%	15.0%
083003 - PLATTE CO. R-III	4,256	2.1%	8.3%	7.8%	0.2%	5.3%	0.9%	24.5%	75.4%	21.3%	1.4%	8.4%
083005 - PARK HILL	11,707	3.3%	12.6%	10.6%	0.5%	5.6%	1.0%	33.0%	66.5%	27.1%	5.0%	10.1%

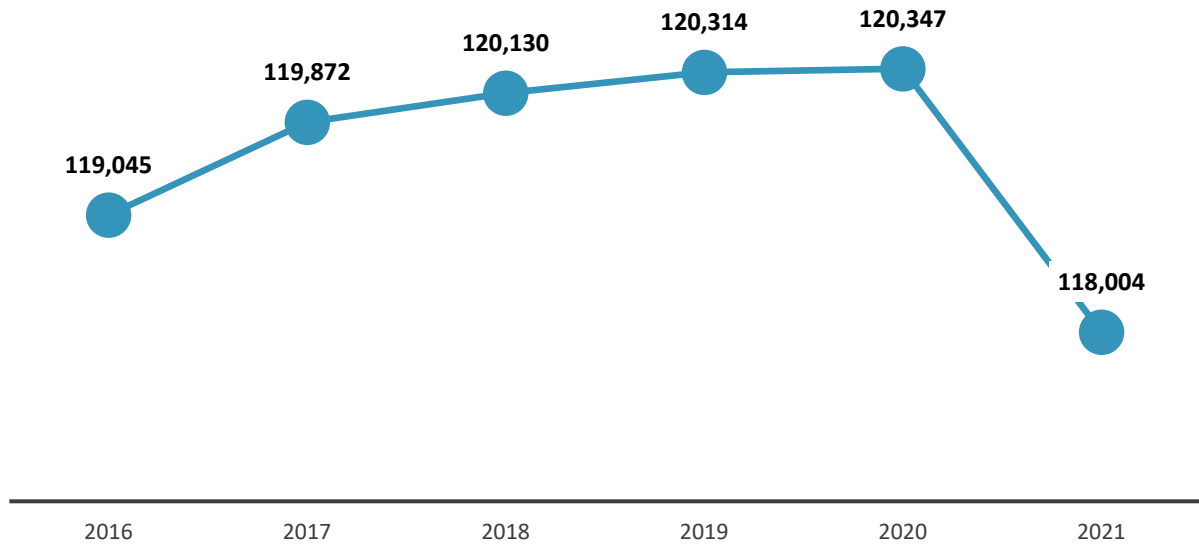
BENCHMARK DEMOGRAPHIC DATA – K-12 ENROLLMENT GROWTH

District	K-12 Enrollment											
	1994-1995	1999-2000	2004-2005	2010-2011	2014-2015	2019-2020	25 Year Growth	20 Year Growth	15 Year Growth	10 Year Growth	5 Year Growth	5 Year Growth %
024090 - LIBERTY 53	5,123	6,517	7,982	10,379	11,770	12,552	+7429	+6035	+4570	+2173	+782	+6.6%
024093 - NORTH KANSAS CITY	16,406	16,920	17,193	18,288	19,253	20,434	+4028	+3514	+3241	+2146	+1181	+6.1%
048066 - FORT OSAGE R-I	4,940	4,831	4,852	4,701	4,965	4,900	-40	+69	+48	+199	-65	-1.3%
048068 - BLUE SPRINGS R-IV	11,965	12,545	13,237	13,813	14,244	14,488	+2523	+1943	+1251	+675	+244	+1.7%
048071 - LEE'S SUMMIT R-VII	11,119	13,920	15,934	17,287	17,575	17,907	+6788	+3987	+1973	+620	+332	+1.9%
048072 - HICKMAN MILLS C-1	7,114	7,319	7,094	6,445	6,236	5,099	-2015	-2220	-1995	-1346	-1137	-18.2%
048073 - RAYTOWN C-2	8,260	8,367	8,664	8,651	8,845	8,227	-33	-140	-437	-424	-618	-7.0%
048074 - GRANDVIEW C-4	4,228	4,279	4,184	3,910	4,200	4,101	-127	-178	-83	+191	-99	-2.4%
048077 - INDEPENDENCE 30	11,345	11,313	10,920	13,413	14,308	14,154	+2809	+2841	+3234	+741	-154	-1.1%
048080 - CENTER 58	2,596	2,695	2,372	2,309	2,412	2,522	-74	-173	+150	+213	+110	+4.6%
083003 - PLATTE CO. R-III	1,709	1,957	2,541	3,318	3,893	4,256	+2547	+2299	+1715	+938	+363	+9.3%
083005 - PARK HILL	8,049	8,845	9,498	10,159	10,713	11,707	+3658	+2862	+2209	+1548	+994	+9.3%

BENCHMARK DEMOGRAPHIC DATA – K-12 ENROLLMENT – COVID IMPACT

District	2016	2017	2018	2019	2020	2021	1 Year Growth
024090 - LIBERTY 53	12,009	12,177	12,364	12,504	12,552	12,563	11
024093 - NORTH KANSAS CITY	19,380	19,604	19,712	20,096	20,434	20,258	-176
048066 - FORT OSAGE R-I	4,969	4,826	4,950	4,892	4,900	4,752	-148
048068 - BLUE SPRINGS R-IV	14,101	14,430	14,380	14,386	14,488	14,533	45
048071 - LEE'S SUMMIT R-VII	17,739	17,915	17,937	18,075	17,907	17,507	-400
048072 - HICKMAN MILLS C-1	5,807	5,758	5,565	5,339	5,099	4,858	-241
048073 - RAYTOWN C-2	8,979	8,868	8,710	8,414	8,227	7,826	-401
048074 - GRANDVIEW C-4	4,257	4,282	4,162	4,135	4,101	3,637	-464
048077 - INDEPENDENCE 30	14,244	14,246	14,341	14,153	14,154	13,767	-387
048080 - CENTER 58	2,489	2,480	2,468	2,531	2,522	2,416	-106
083003 - PLATTE CO. R-III	3,960	4,004	4,083	4,178	4,256	4,205	-51
083005 - PARK HILL	11,111	11,282	11,458	11,611	11,707	11,682	-25
TOTAL	119,045	119,872	120,130	120,314	120,347	118,004	-2,343

Total K-12 Enrollment
All Benchmark School Districts



BENCHMARK POPULATION DATA

This table provides values for various population data of benchmark school districts.

District Name	Estimated Population (2020)	2019 Estimated Percent Population 17 years old or younger	2020-21 K-12 School Enrollment	2020 Estimated School-Age Population	Est 2020 Percentage of School-Age Children Living in the District Who Attend District Schools 2020*
048068 - BLUE SPRINGS R-IV	82,068	22.3%	14,533	13,411	108.4%
048080 - CENTER 58	25,549	23.6%	2,416	4,213	57.3%
048066 - FORT OSAGE R-I	25,860	23.2%	4,752	4,432	107.2%
048074 - GRANDVIEW C-4	33,134	23.2%	3,637	5,577	65.2%
048072 - HICKMAN MILLS C-1	47,655	26.1%	4,858	8,988	54.0%
048077 - INDEPENDENCE 30	96,075	22.8%	13,767	15,994	86.1%
048071 - LEE'S SUMMIT R-VII	102,508	22.1%	17,507	16,908	103.5%
024090 - LIBERTY 53	62,171	25.5%	12,563	12,141	103.5%
024093 - NORTH KANSAS CITY	139,051	23.9%	20,258	24,238	83.6%
083005 - PARK HILL	73,569	22.0%	11,682	11,808	98.9%
083003 - PLATTE CO. R-III	27,469	24.5%	4,205	4,870	86.3%
048073 - RAYTOWN C-2	60,036	22.1%	7,826	9,627	81.3%

* More than 100% market share can occur when : (1) Students living outside the school district enroll in the district's schools; (2) The estimated school-age population is too low. A more reliable calculation will be available with 2020 Census data scheduled to be available after September 2021.

BENCHMARK HOUSEHOLD DATA

The following table provides values for household data of benchmark school districts.

District Name	Number of Households (2020)	Est. 2020 Average Household Size	Est 2020 Estimated College Graduate or Professional Degree (includes Associate Degree)	Est. 2020 Estimated Median Home Value	2020 Estimated Percentage of Households in Poverty
048068 - BLUE SPRINGS R-IV	31,300	2.60	47.0%	233,387	6.5%
048080 - CENTER 58	12,348	2.05	45.7%	191,817	12.2%
048066 - FORT OSAGE R-I	9,257	2.78	24.0%	155,070	12.0%
048074 - GRANDVIEW C-4	13,089	2.45	36.5%	179,128	12.3%
048072 - HICKMAN MILLS C-1	18,845	2.51	29.9%	128,086	17.0%
048077 - INDEPENDENCE 30	40,682	2.34	25.4%	134,760	15.0%
048071 - LEE'S SUMMIT R-VII	38,230	2.66	52.9%	271,688	5.8%
024090 - LIBERTY 53	22,189	2.74	50.5%	261,051	5.8%
024093 - NORTH KANSAS CITY	57,482	2.41	39.5%	193,906	8.0%
083005 - PARK HILL	29,703	2.46	52.3%	271,565	6.7%
083003 - PLATTE CO. R-III	11,659	2.33	47.7%	260,975	7.5%
048073 - RAYTOWN C-2	24,788	2.39	29.3%	141,106	12.1%

BENCHMARK SCHOOL FINANCE DATA

The table below provides values for school finance data based upon the 2019-2020 school year.

TAX BASE

District	Percent Local Funding	Percent State Funding	Percent Federal Funding	Assessed Valuation	Assessed Valuation Per Student	Total Expenditures
024090 - LIBERTY 53	54%	42%	4%	1,069,787,061	85,228	209,103,985
024093 - NORTH KANSAS CITY	62%	31%	7%	2,398,877,044	117,396	305,318,225
048066 - FORT OSAGE R-I	43%	47%	10%	318,259,729	64,951	60,785,073
048068 - BLUE SPRINGS R-IV	60%	35%	5%	1,721,867,538	118,848	250,128,668
048071 - LEE'S SUMMIT R-VII	63%	33%	4%	2,370,651,227	132,387	263,517,216
048072 - HICKMAN MILLS C-1	41%	42%	18%	501,235,452	98,301	79,183,330
048073 - RAYTOWN C-2	50%	38%	12%	749,676,117	91,124	138,368,462
048074 - GRANDVIEW C-4	58%	29%	13%	578,528,709	141,070	62,650,578
048077 - INDEPENDENCE 30	42%	43%	14%	1,138,719,492	80,452	242,104,422
048080 - CENTER 58	76%	13%	11%	562,928,856	223,207	66,688,943
083003 - PLATTE CO. R-III	64%	31%	4%	583,856,007	137,184	54,497,690
083005 - PARK HILL	71%	25%	4%	1,881,727,803	160,735	226,670,143

TAX RATE (2019-2020)

District	Tax Rate - Incidental Fund	Tax Rate - Teachers Fund	Tax Rate - Debt Service	Tax Rate - Capital Projects	Total Tax Rate
024090 - LIBERTY 53	4.5285	0.0000	1.5665	0.3600	6.4550
024093 - NORTH KANSAS CITY	2.5423	2.2400	1.2900	0.1300	6.2023
048066 - FORT OSAGE R-I	2.1768	2.5000	1.6932	0.0000	6.3700
048068 - BLUE SPRINGS R-IV	4.2418	0.0000	1.3082	0.0000	5.5500
048071 - LEE'S SUMMIT R-VII	4.2080	0.0000	1.0700	0.0500	5.3280
048072 - HICKMAN MILLS C-1	4.4784	0.0000	1.1000	0.0000	5.5784
048073 - RAYTOWN C-2	5.1600	0.0000	1.1600	0.0000	6.3200
048074 - GRANDVIEW C-4	4.0930	0.0000	1.0500	0.0000	5.1430
048077 - INDEPENDENCE 30	4.1582	0.0000	1.3395	0.0000	5.4977
048080 - CENTER 58	4.4774	0.0000	0.9000	0.0600	5.4374
083003 - PLATTE CO. R-III	3.3145	0.0000	1.2862	0.4186	5.0193
083005 - PARK HILL	4.5227	0.0000	0.7128	0.1600	5.3955



Park Hill School District

Building Successful Futures • Each Student • Every Day

This Page Left Intentionally Blank

STUDENT ENROLLMENT

In this section of the *2020-2021 Demographic Profile & Enrollment Projections* the Park Hill School District historical enrollment data is depicted in various tables and graphs. In addition, data on district housing and birthrates are shared in order to establish trends relevant to enrollment growth in future years.

HISTORICAL ENROLLMENT DATA

This section includes the following tables, charts, and graphs:

Student Enrollment Table by Grade – 25-Year Historical. This table summarizes official enrollment in the district over the last twenty-five years.

K-12 Student Enrollment Chart – 25-Year Historical. This graph represents enrollment and enrollment growth over the last twenty-five years.

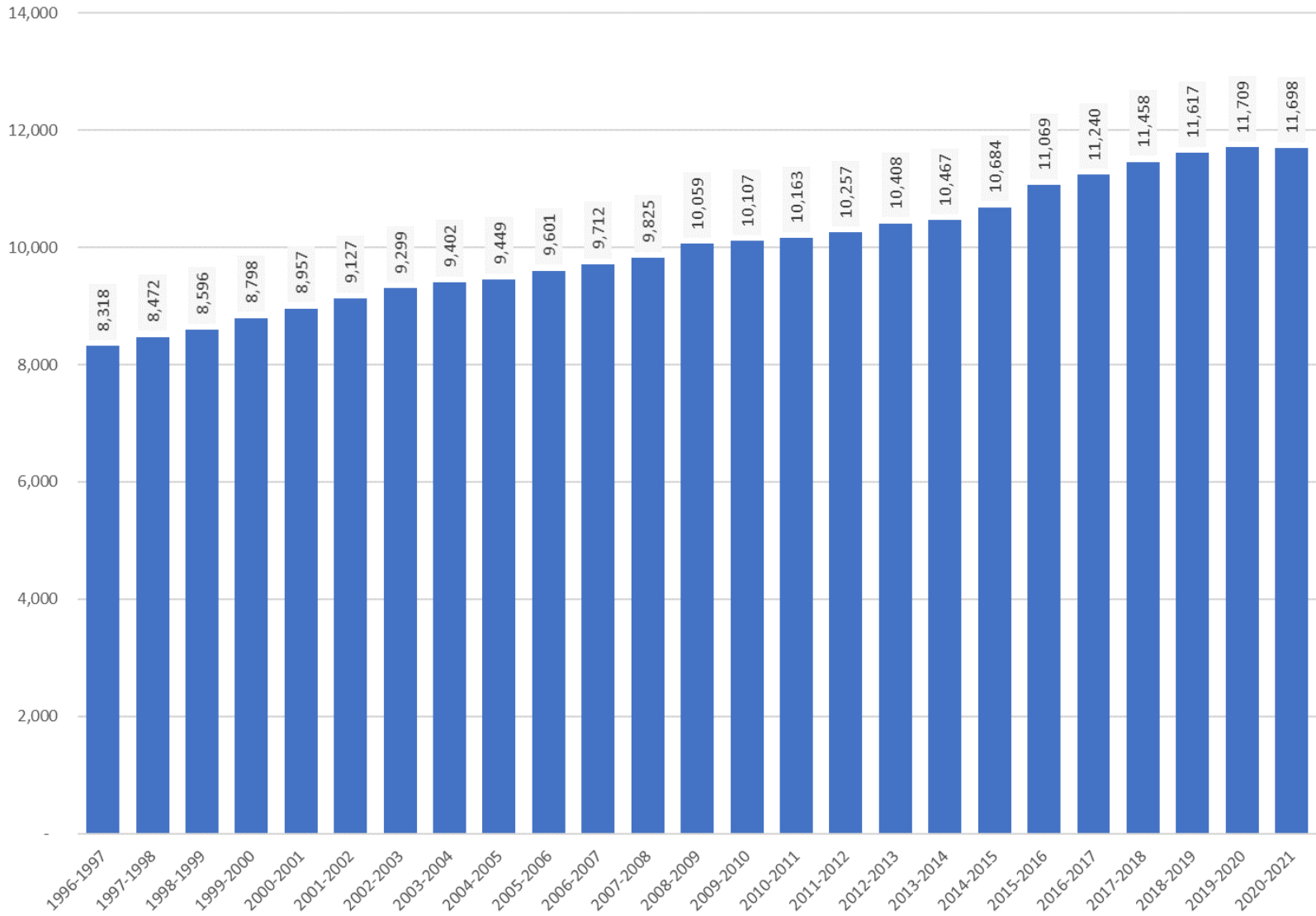
Annual Growth in K-12 Student Enrollment – 25-Year Historical. This graph represents enrollment growth (number of students) over the last twenty-five years.

STUDENT ENROLLMENT TABLE BY GRADE – 25-YEAR HISTORICAL

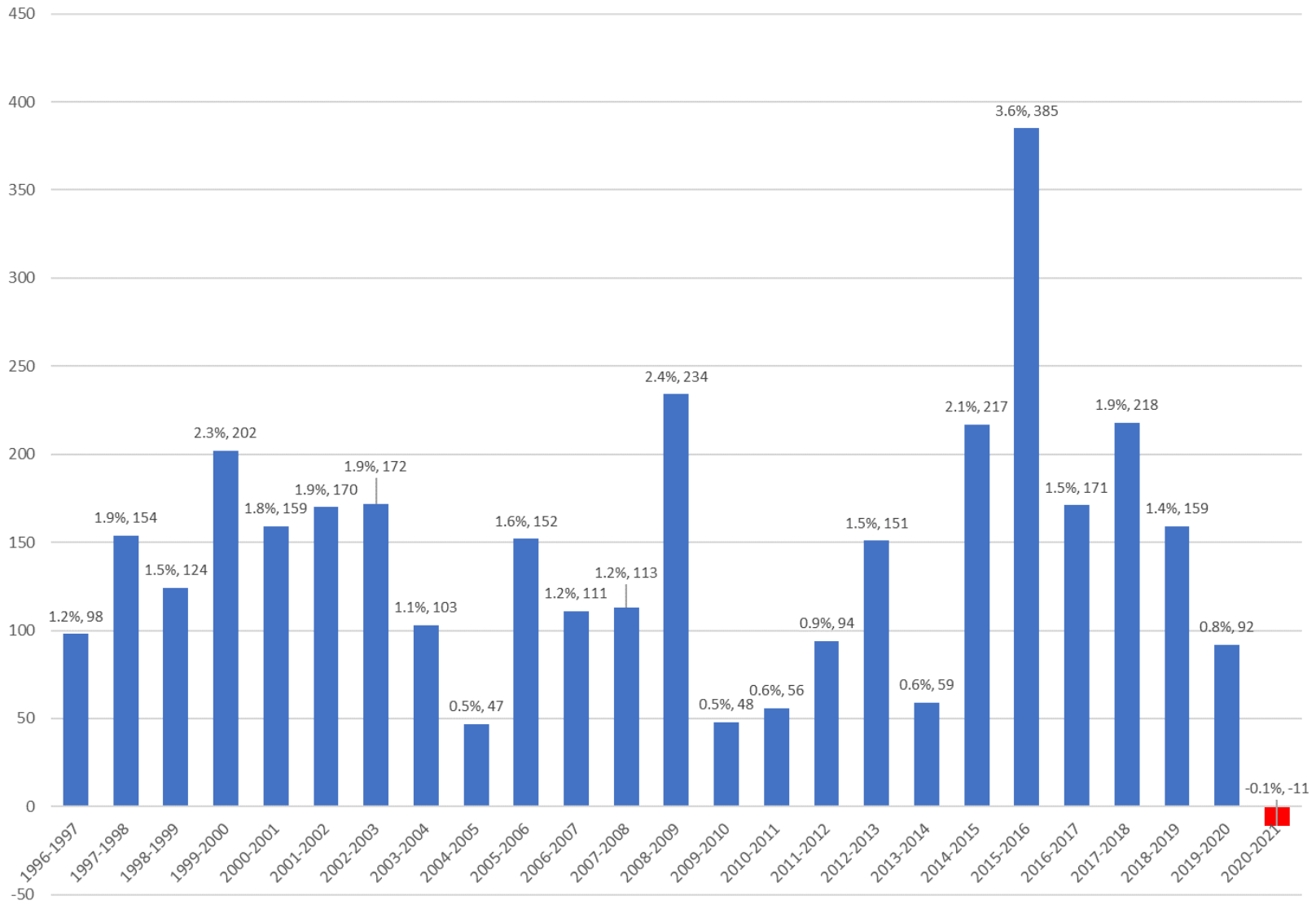
School Year	K	1	2	3	4	5	K-5 Subtotal	6	7	8	6-8 Subtotal	9	10	11	12	9-12 Subtotal	Grand Total
1996-1997	634	652	635	694	599	661	3,875	635	709	595	1,939	612	705	608	579	2,504	8,318
1997-1998	667	670	651	634	713	603	3,938	673	663	705	2,041	617	627	692	557	2,493	8,472
1998-1999	645	692	678	659	631	734	4,039	638	690	657	1,985	745	617	625	585	2,572	8,596
1999-2000	657	685	688	729	689	658	4,106	740	649	714	2,103	701	734	603	551	2,589	8,798
2000-2001	608	667	693	707	735	698	4,108	671	765	657	2,093	749	715	739	553	2,756	8,957
2001-2002	640	659	681	688	722	747	4,137	736	679	793	2,208	697	730	692	663	2,782	9,127
2002-2003	719	679	681	683	696	742	4,200	765	751	678	2,194	827	704	727	647	2,905	9,299
2003-2004	688	747	702	652	700	699	4,188	773	781	758	2,312	709	810	678	705	2,902	9,402
2004-2005	711	669	738	715	656	689	4,178	722	767	793	2,282	797	705	800	687	2,989	9,449
2005-2006	676	725	693	739	719	683	4,235	718	748	794	2,260	834	789	690	793	3,106	9,601
2006-2007	705	711	718	713	737	745	4,329	734	757	778	2,269	838	819	763	694	3,114	9,712
2007-2008	703	740	718	743	740	750	4,394	759	760	753	2,272	821	802	793	743	3,159	9,825
2008-2009	726	741	760	746	767	755	4,495	786	792	778	2,356	817	797	794	800	3,208	10,059
2009-2010	704	764	760	786	754	791	4,559	761	780	801	2,342	823	806	794	783	3,206	10,107
2010-2011	744	712	773	782	779	761	4,551	780	786	803	2,369	853	807	789	794	3,243	10,163
2011-2012	752	739	722	789	787	788	4,577	775	816	785	2,376	856	843	806	799	3,304	10,257
2012-2013	771	791	768	745	821	800	4,696	807	819	821	2,447	828	842	810	785	3,265	10,408
2013-2014	788	794	787	778	753	815	4,715	814	846	808	2,468	861	817	795	811	3,284	10,467
2014-2015	822	812	831	792	791	771	4,819	841	836	865	2,542	847	848	829	799	3,323	10,684
2015-2016	851	863	834	865	822	785	5,020	812	900	866	2,578	951	855	833	832	3,471	11,069
2016-2017	792	865	877	848	882	865	5,129	798	866	892	2,556	927	935	865	828	3,555	11,240
2017-2018	831	829	914	894	871	905	5,244	874	849	869	2,592	950	896	927	849	3,622	11,458
2018-2019	819	879	828	923	933	893	5,275	913	910	850	2,673	945	949	886	889	3,669	11,617
2019-2020	865	826	890	846	925	933	5,285	948	931	911	2,790	911	926	925	872	3,634	11,709
2020-2021	812	863	849	866	858	940	5,188	936	937	920	2,793	966	899	923	929	3,717	11,698

*Highlighted cells (orange) denote the largest historical enrollments for each grade level (K, 1, 2, etc.) and grade spans (Elementary, Middle, High School).

K-12 STUDENT ENROLLMENT CHART- 25-YEAR HISTORICAL



ANNUAL GROWTH IN K-12 STUDENT ENROLLMENT – 25-YEAR HISTORICAL



CURRENT ENROLLMENT

This section of the *2020-2021 Demographic Profile & Enrollment Projections* of the Park Hill School District shows data collected on the state’s official student count day and is reflected in various tables, charts and graphs. The Missouri Department of Elementary and Secondary Education has established the annual official **enrollment** count as the number of students in grades K-12 enrolled on the last Wednesday in September of each year. A second enrollment count is taken in January of each year by all Missouri school districts but is not a part of this report.

The student enrollment value should not be confused with the rate of pupil attendance or **average daily attendance** (ADA), which is the total hours of student attendance divided by the total hours school is in session. In addition, the state utilizes a third measure to calculate student population – **membership**. Membership totals are used to differentiate full-time students from part-time. The membership of a student is reported as a full-time equivalency (FTE), such that a student enrolled the last Wednesday of September for 6 hours of a 6-hour day would be reported as a 1.00 FTE for September membership. If that same student was enrolled for 2 hours of a 6-hour day the last Wednesday of January, the January membership would be 0.33 FTE.

The report also distinguishes between Program Enrollment and Resident Enrollment. Resident Enrollment is the count of student assigned to a “home” school, or the school attendance area in which they reside. Program Enrollment is the enrollment within a school or special program such as the LEAD Innovation Studio or Russell Jones Education Center.

For the purposes of this report and the projections made at the end of the report, the September enrollment count has been utilized as the benchmark for comparison from year to year. Any exceptions to this are highlighted throughout the report.

This section includes the following tables, charts, and graphs:

K-12 Student Program Enrollment. This table summarizes enrollment by school and by grade level.

Change In K-12 Student Program Enrollment from Prior Year. This table summarizes where the changes in enrollment occurred (by school and grade level) over the last year.

K-12 Enrollment by School (Resident Enrollment). This graph summarizes resident enrollment by school.

Park Hill School District Grade Level Distribution. This graph summarizes enrollment by grade level.

Park Hill School District Cohort Size Analysis. This table summarizes enrollment by grade level and compares these enrollments to benchmark years.

Park Hill School District Student Geographic Distribution. This map plots all students from the 2020-2021 school year on a district map.

Park Hill School District Student Enrollment Density. This shows the density of students enrolled from the 2020-2021 school year on a district map.

Park Hill School District Grade Level Distribution and Cohort Growth Since Kindergarten. This graph represents a key concept in projecting student enrollment – “cohort growth”. This graph shows current enrollment by grade level and includes the size of the same cohort when they were kindergarteners. As depicted in the graph, Park Hill School District classes generally increase in size as they pass from grade level to grade level.

Park Hill School District Current Senior Class Cohort Growth – Kindergarten Through 12th Grade. The graph shows the cohort change over the last 13 years of the current graduating class, beginning when they were kindergarteners.

Park Hill School District Diversity of Enrollment. This pie chart represents the diversity of the student population.

Park Hill School District Change in Diverse Populations. This graph and corresponding data table shows the increase of diverse populations over the last ten years.

Park Hill School District Diverse Populations by School. This graph illustrates the percentage of non-white students within each school.

Park Hill School District Growth in Free and Reduced Lunch Population. This chart reports the rate of students who receive free and reduced lunch over the last ten years. For the purpose of this annual report and to be consistent with state reporting, the district has utilized the official January membership count to compare free and reduced values.

Park Hill School District Free and Reduced Lunch Population by School. This graph illustrates the percentage of free and reduced students within each school. For the purposes of this annual report, the district has utilized the official January count to compare free and reduced values.

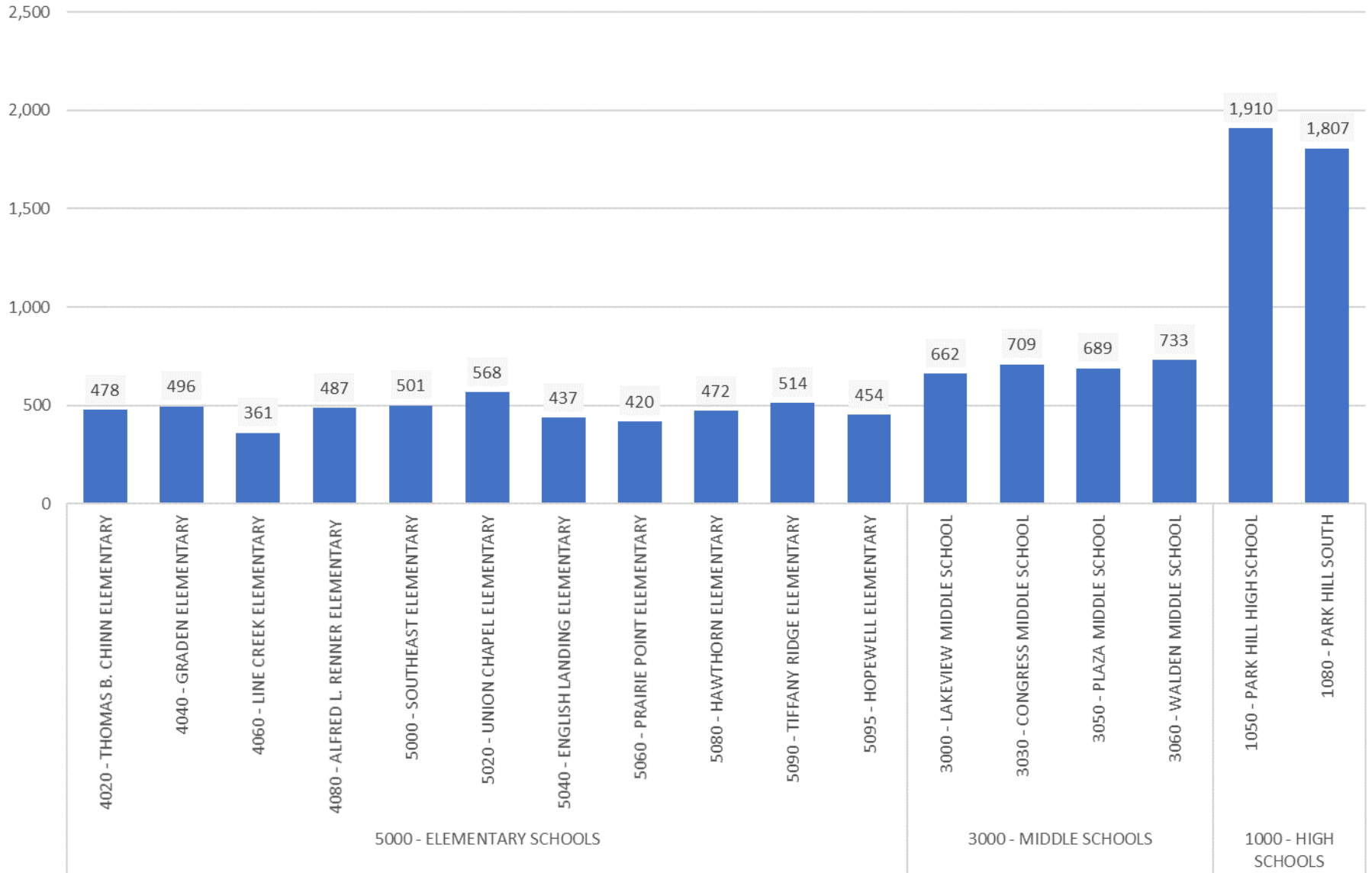
K-12 STUDENT PROGRAM ENROLLMENT

	K	1	2	3	4	5	6	7	8	9	10	11	12	Total
1000 - HIGH SCHOOLS										966	899	923	929	3,717
1020 - LEAD INNOVATION STUDIO										202	159	110	118	589
1050 - PARK HILL HIGH SCHOOL										363	340	429	425	1,557
1080 - PARK HILL SOUTH										395	395	380	377	1,547
6000 - RUSSELL JONES EDUCATION CENTER										6	5	4	9	24
3000 - MIDDLE SCHOOLS							936	937	920					2,793
3000 - LAKEVIEW MIDDLE SCHOOL							228	220	212					660
3030 - CONGRESS MIDDLE SCHOOL							223	258	227					708
3050 - PLAZA MIDDLE SCHOOL							240	211	236					687
3060 - WALDEN MIDDLE SCHOOL							242	247	241					730
6000 - RUSSELL JONES EDUCATION CENTER							3	1	4					8
5000 - ELEMENTARY SCHOOLS	812	863	849	866	858	940								5,188
4020 - THOMAS B. CHINN ELEMENTARY	73	84	85	72	76	85								475
4040 - GRADEN ELEMENTARY	72	69	99	91	64	96								491
4060 - LINE CREEK ELEMENTARY	57	54	55	56	62	74								358
4080 - ALFRED L. RENNER ELEMENTARY	73	69	96	88	67	91								484
5000 - SOUTHEAST ELEMENTARY	85	85	69	88	92	76								495
5020 - UNION CHAPEL ELEMENTARY	88	108	105	76	103	83								563
5040 - ENGLISH LANDING ELEMENTARY	58	76	84	76	64	76								434
5060 - PRAIRIE POINT ELEMENTARY	73	60	51	74	79	81								418
5080 - HAWTHORN ELEMENTARY	55	92	59	73	98	94								471
5090 - TIFFANY RIDGE ELEMENTARY	92	79	85	79	83	94								512
5095 - HOPEWELL ELEMENTARY	82	82	54	84	65	87								454
6000 - RUSSELL JONES EDUCATION CENTER	4	5	7	9	5	3								33
Total	812	863	849	866	858	940	936	937	920	966	899	923	929	11,698

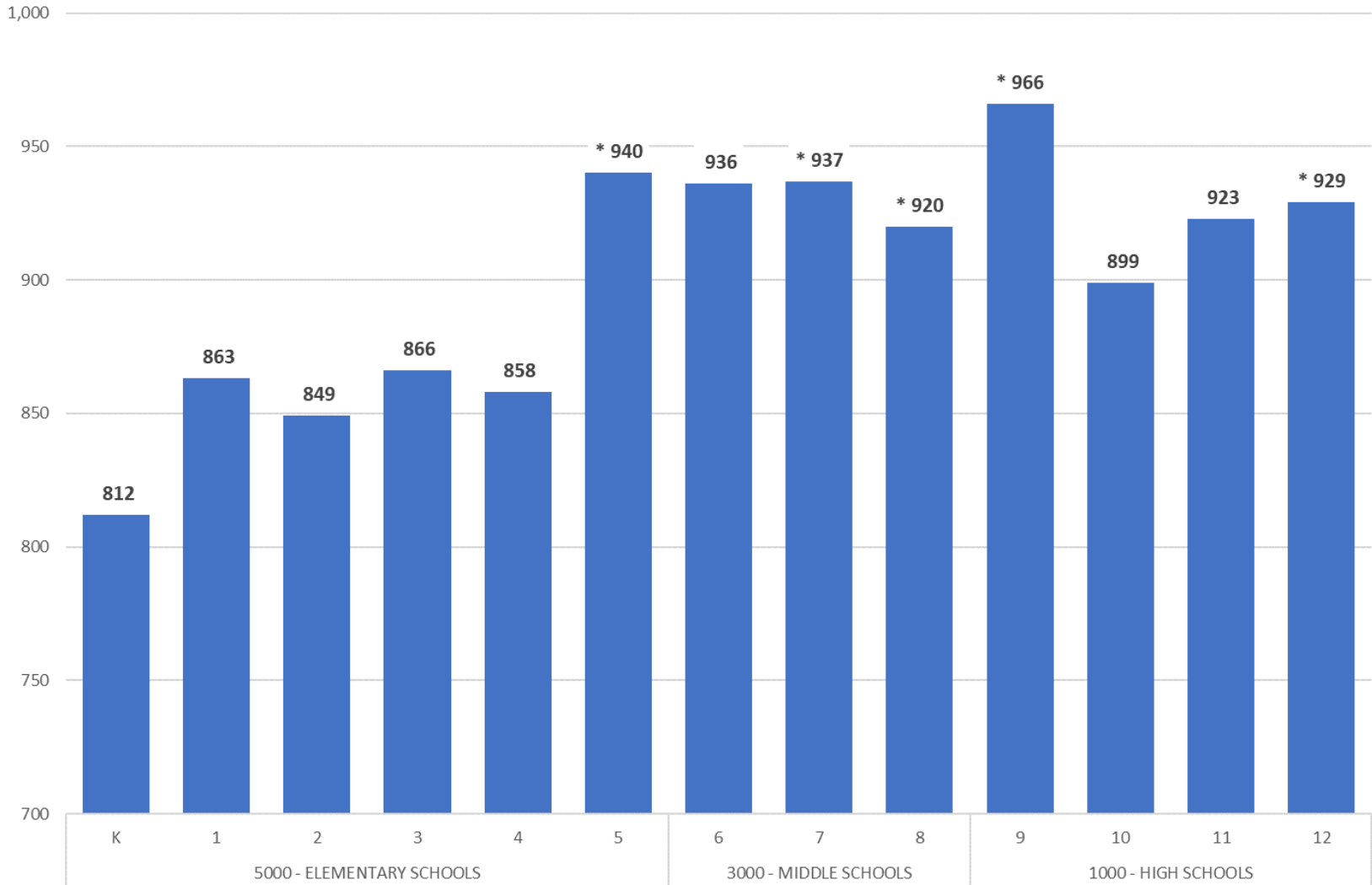
CHANGE IN K-12 STUDENT PROGRAM ENROLLMENT FROM PRIOR YEAR

	K	1	2	3	4	5	6	7	8	9	10	11	12	Total
1000 - HIGH SCHOOLS										+55	-27	-2	+57	+83
1020 - LEAD INNOVATION STUDIO										+12	+33	-23	+118	+140
1050 - PARK HILL HIGH SCHOOL										+21	-89	+8	-33	-93
1080 - PARK HILL SOUTH										+22	+27	+11	-32	+28
6000 - RUSSELL JONES EDUCATION CENTER										0	+2	+2	+4	+8
3000 - MIDDLE SCHOOLS							-12	+6	+9					+3
3000 - LAKEVIEW MIDDLE SCHOOL							0	+5	-31					-26
3030 - CONGRESS MIDDLE SCHOOL							-31	+32	+15					+16
3050 - PLAZA MIDDLE SCHOOL							+16	-33	-4					-21
3060 - WALDEN MIDDLE SCHOOL							+1	+5	+33					+39
6000 - RUSSELL JONES EDUCATION CENTER							+2	-3	-4					-5
5000 - ELEMENTARY SCHOOLS	-53	+37	-41	+20	-67	+7								-97
4020 - THOMAS B. CHINN ELEMENTARY	-4	+4	+7	+10	+2	+6								+25
4040 - GRADEN ELEMENTARY	-8	-8	+7	+18	-31	+9								-13
4060 - LINE CREEK ELEMENTARY	+2	-5	-14	-1	-23	+6								-35
4080 - ALFRED L. RENNER ELEMENTARY	+11	-15	+12	+29	-23	+18								+32
5000 - SOUTHEAST ELEMENTARY	-6	+6	-21	+1	+18	-8								-10
5020 - UNION CHAPEL ELEMENTARY	-19	+24	+21	-23	+14	-4								+13
5040 - ENGLISH LANDING ELEMENTARY	-14	-1	+13	-1	-9	-20								-32
5060 - PRAIRIE POINT ELEMENTARY	+4	-5	-22	-4	+9	+5								-13
5080 - HAWTHORN ELEMENTARY	-32	+19	-8	-23	+6	-9								-47
5090 - TIFFANY RIDGE ELEMENTARY	+9	+6	+8	-4	-8	-10								+1
5095 - HOPEWELL ELEMENTARY	+3	+14	-39	+12	-23	+16								-17
6000 - RUSSELL JONES EDUCATION CENTER	+1	-2	-5	+6	+1	-2								-1
Total	-53	+37	-41	+20	-67	+7	-12	+6	+9	+55	-27	-2	+57	-11

K-12 ENROLLMENT BY SCHOOL (RESIDENT ENROLLMENT)



PARK HILL SCHOOL DISTRICT GRADE LEVEL DISTRIBUTION



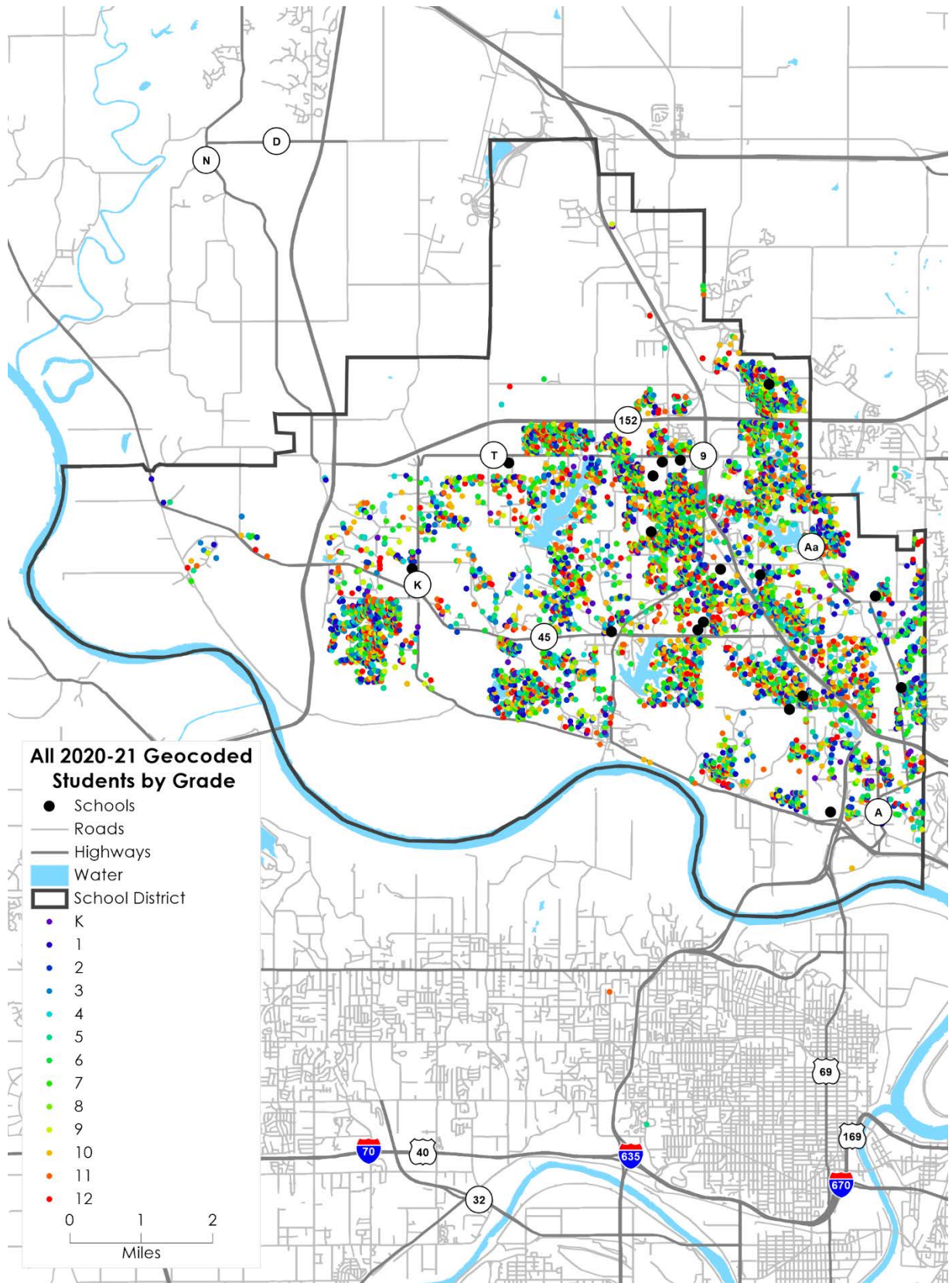
** denotes the largest cohorts in this grade level*

PARK HILL SCHOOL DISTRICT COHORT SIZE ANALYSIS

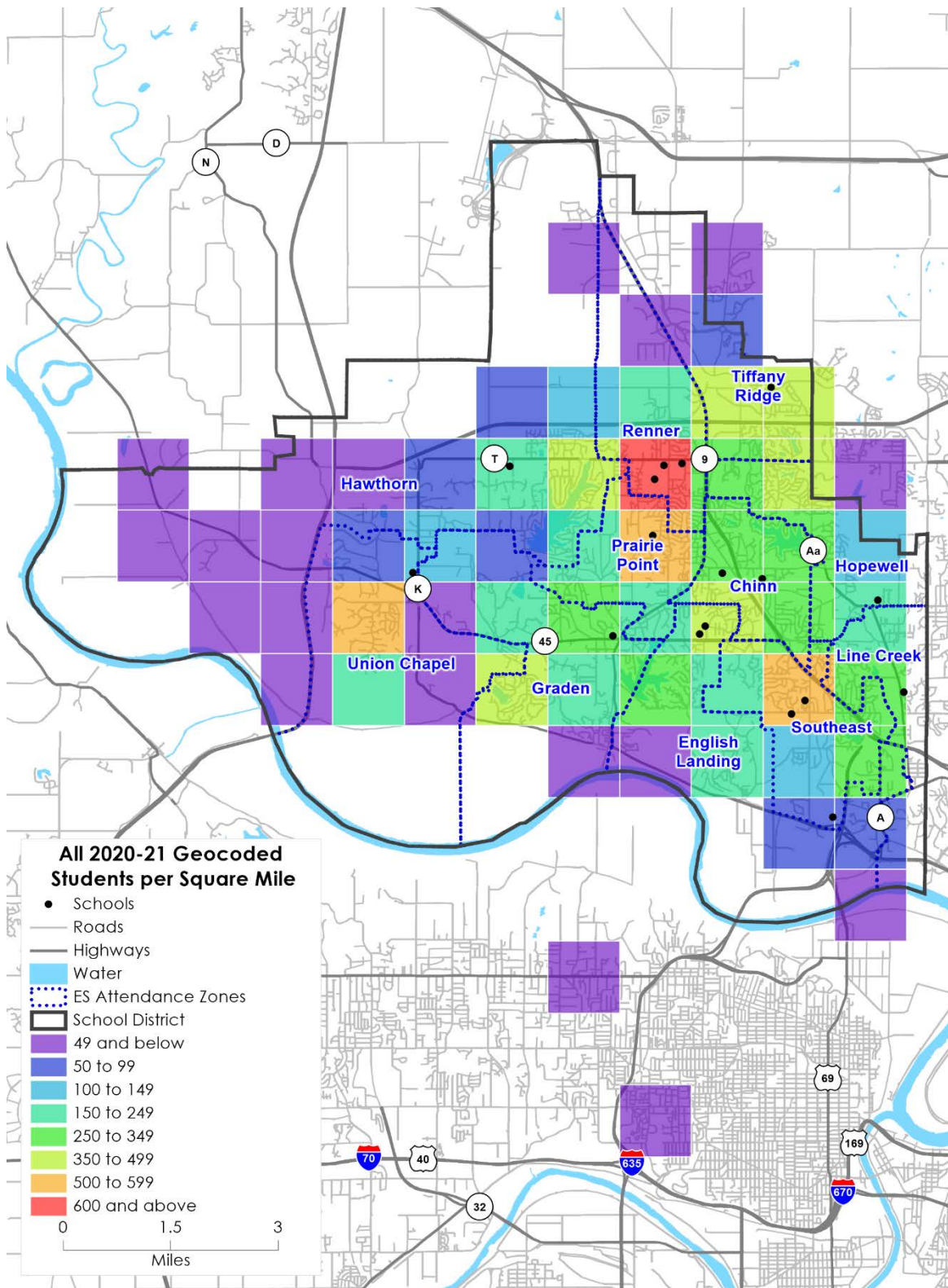
The table below displays largest cohort per grade level and the school year in which that cohort and grade was present in the school district.

Grade Level	Cohort Size	School Year
K	865	2019-2020
1	879	2018-2019
2	914	2017-2018
3	923	2018-2019
4	933	2018-2019
5	940	2020-2021
K-5 Subtotal	5,285	2019-2020
6	948	2019-2020
7	937	2020-2021
8	920	2020-2021
6-8 Subtotal	2,793	2020-2021
9	966	2020-2021
10	949	2018-2019
11	927	2017-2018
12	929	2020-2021
9-12 Subtotal	3,717	2020-2021
Grand Total	11,709	2019-2020
Enrollment Growth	400	2015-2016
Enrollment Growth %	3.7%	2015-2016

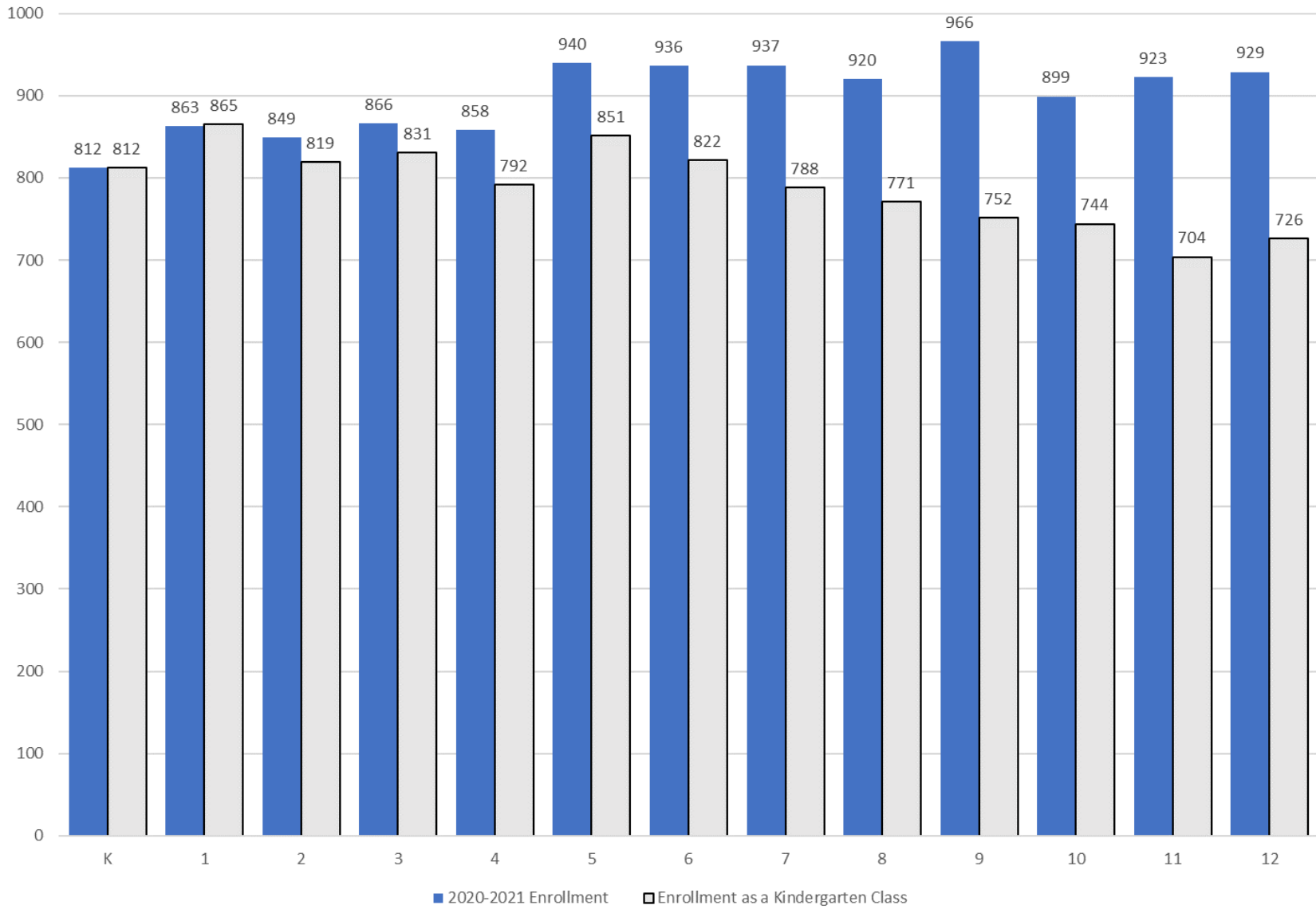
PARK HILL SCHOOL DISTRICT STUDENT GEOGRAPHIC DISTRIBUTION



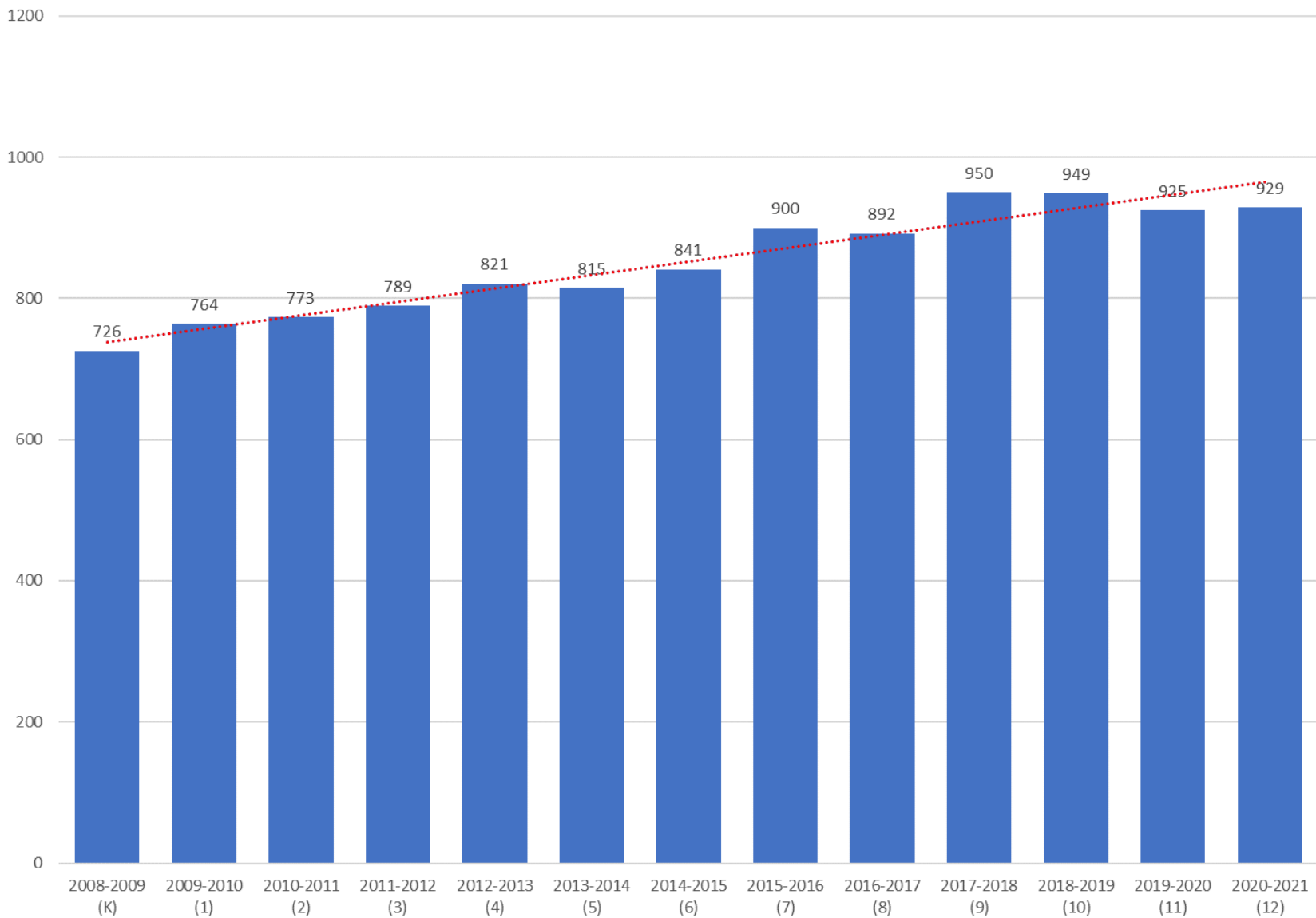
PARK HILL SCHOOL DISTRICT STUDENT ENROLLMENT DENSITY



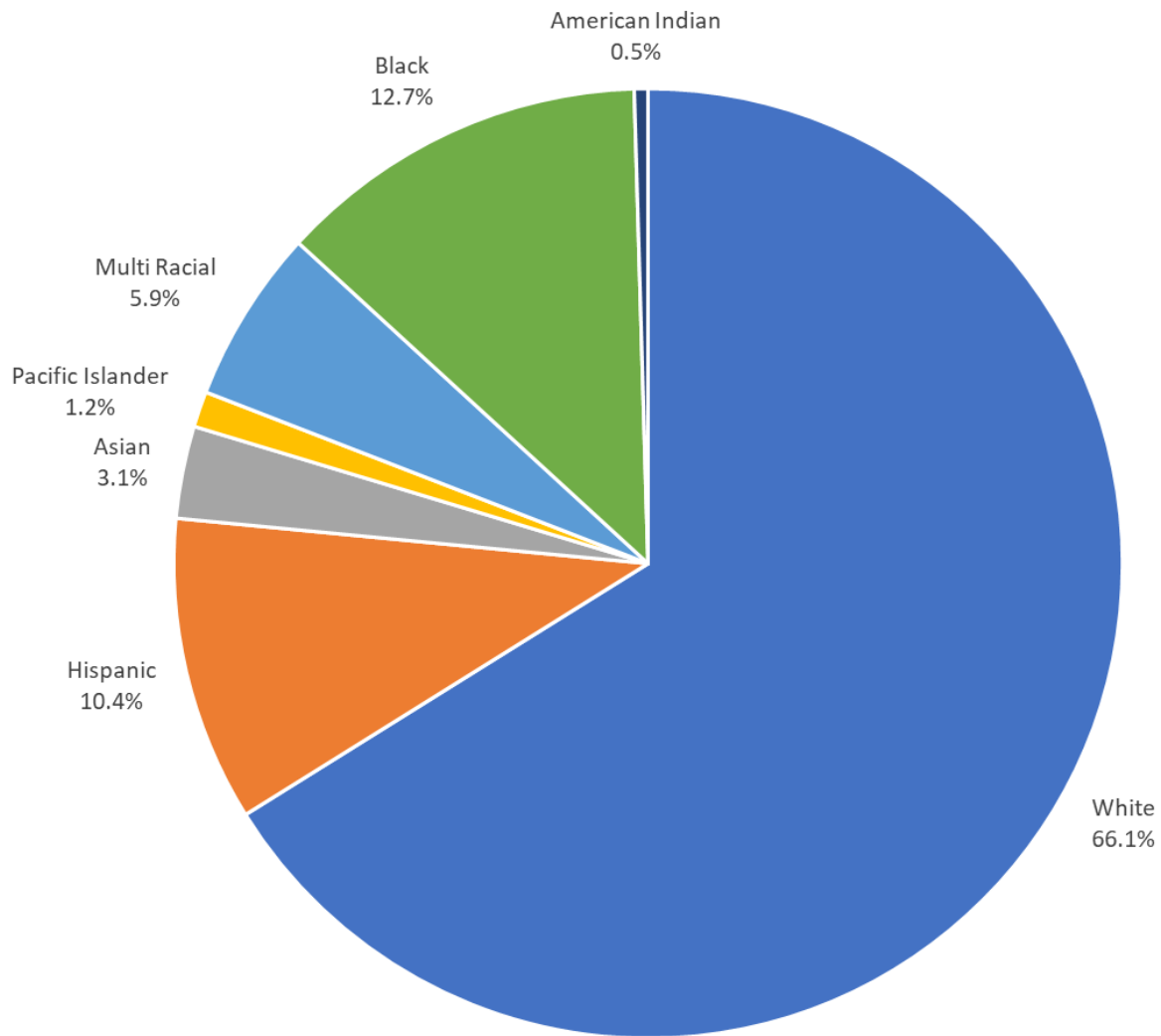
PARK HILL SCHOOL DISTRICT GRADE LEVEL DISTRIBUTION AND COHORT GROWTH SINCE KINDERGARTEN



PARK HILL SCHOOL DISTRICT CURRENT SENIOR CLASS COHORT GROWTH – KINDERGARTEN THROUGH 12TH GRADE



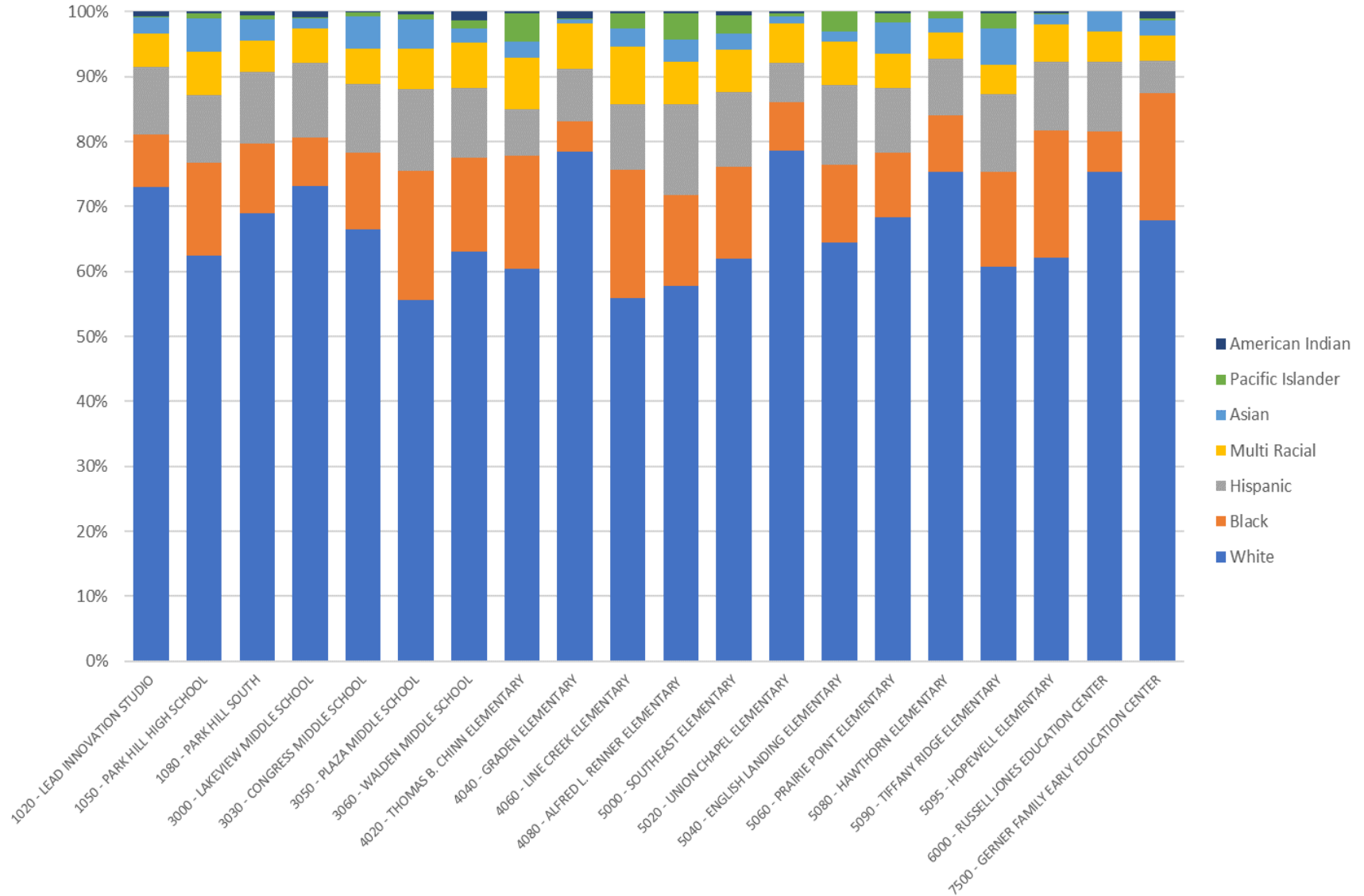
PARK HILL SCHOOL DISTRICT DIVERSITY OF ENROLLMENT



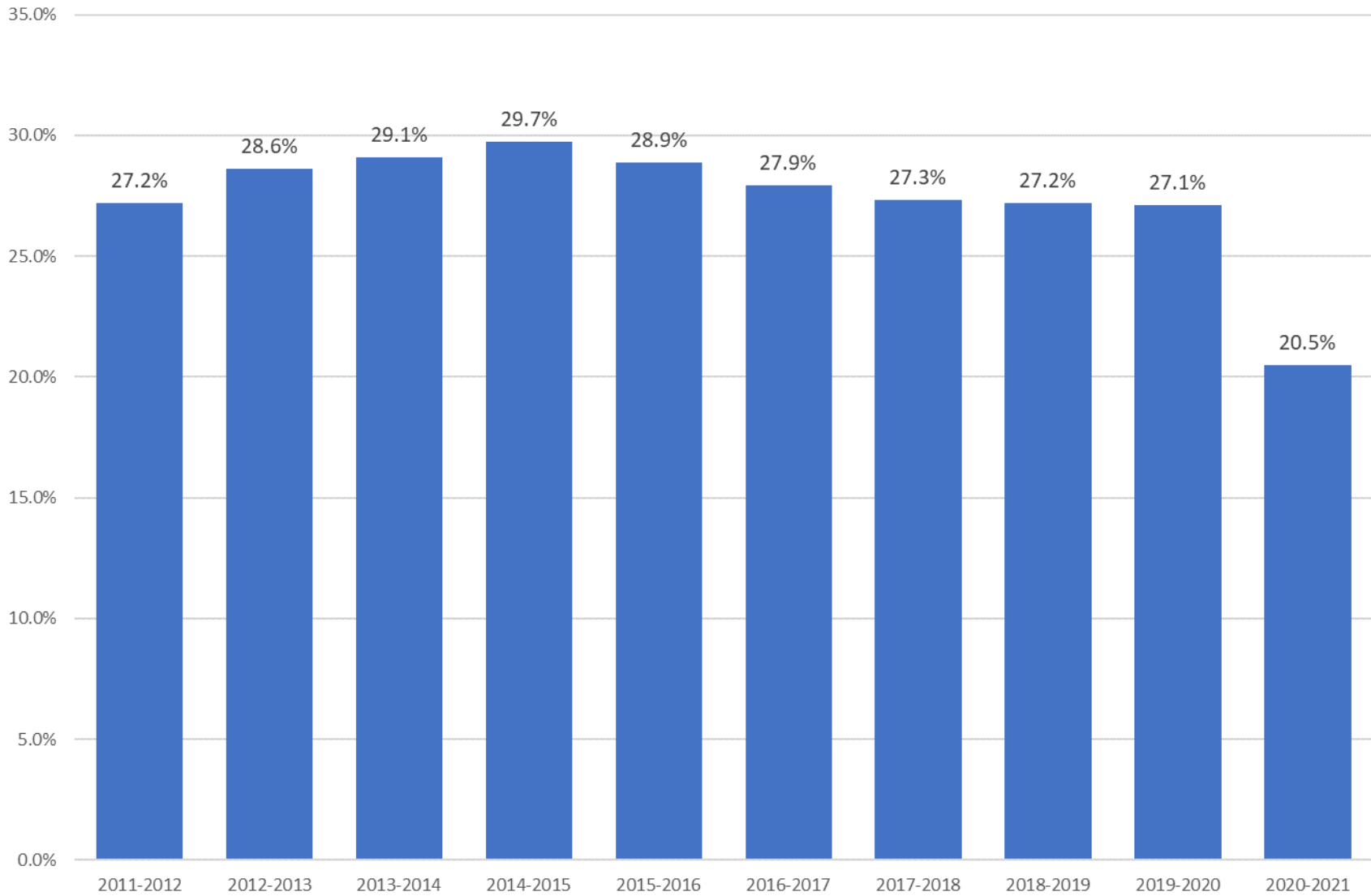
PARK HILL SCHOOL DISTRICT CHANGE IN DIVERSE POPULATIONS



PARK HILL SCHOOL DISTRICT DIVERSE POPULATIONS BY SCHOOL

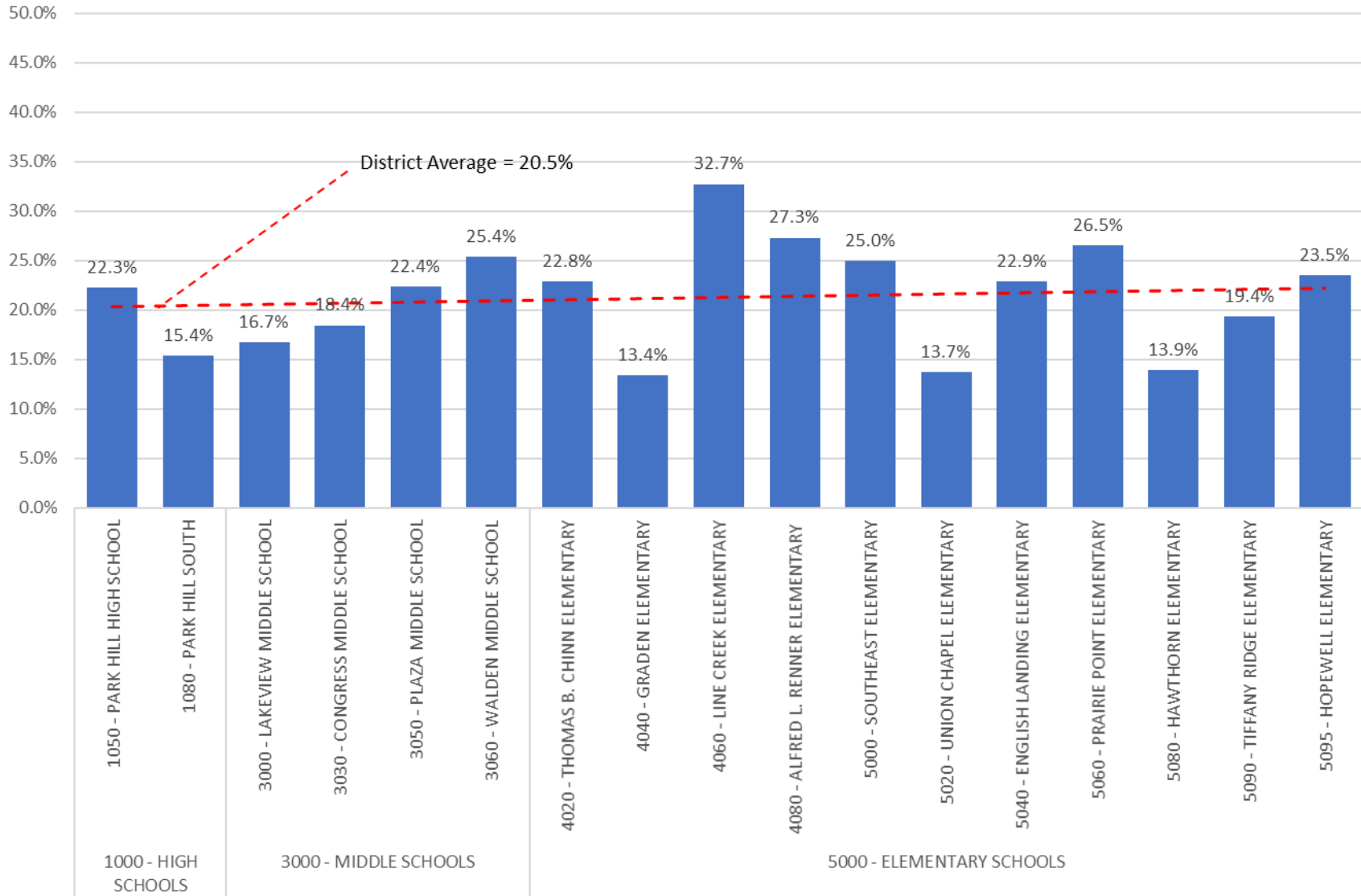


PARK HILL SCHOOL DISTRICT GROWTH IN FREE AND REDUCED LUNCH POPULATION*



* Official Free and Reduced Lunch Counts are based on January Membership Counts

PARK HILL SCHOOL DISTRICT FREE AND REDUCED LUNCH POPULATION BY SCHOOL *



* Official Free and Reduced Lunch Counts are based on January Membership Counts

PARK HILL SCHOOL DISTRICT MOBILITY DATA

One of the major challenges facing schools is student mobility. A student is considered mobile when they transfer schools. Unfortunately, mobility has been demonstrated to be associated with many negative outcomes, including low achievement, grade retention, and dropping out. Students who are in a school or district for a relatively short time do not have as great of an opportunity to benefit from consistent educational programming.

Park Hill School District, like any district, is forced to deal with issues related to mobility. While the educational programming that students receive may not differ significantly when transferring from one building to the next within the district, the same cannot be assumed for transferring in from other districts. The following charts display student mobility rates for Park Hill School District, as defined by the percentage of students who are new to the district. “One-year mobility” is the percentage of current students who were not in Park Hill last year. More specifically, these students were here on the 2019-2020 September count day but not here on the 2018-2019 September count day. “Two-year mobility” is the percentage of current students who were not in the Park Hill School District two years ago, based on them not being in the district on the past two years’ count days. Kindergarten students are not included in the one-year student mobility rates. Likewise, kindergarten and first grade students are not included in the two-year student mobility calculation.

This section of the *2020-2021 Demographic Profile & Enrollment Projections* depicts seven graphs showing student mobility rates for Park Hill School District, as defined by the percentage of students who are new to the Park Hill School District.

District Mobility. This graph shows the number of students new to the district for the last two school years.

Mobility by Grade Span. This graph disaggregates the mobility data by grade span for the last two school years.

Mobility by Ethnicity. This graph disaggregates the mobility data by ethnicity for the last two school years.

Mobility by Free and Reduced Lunch Status. This graph disaggregates the mobility data by free and reduced lunch status.

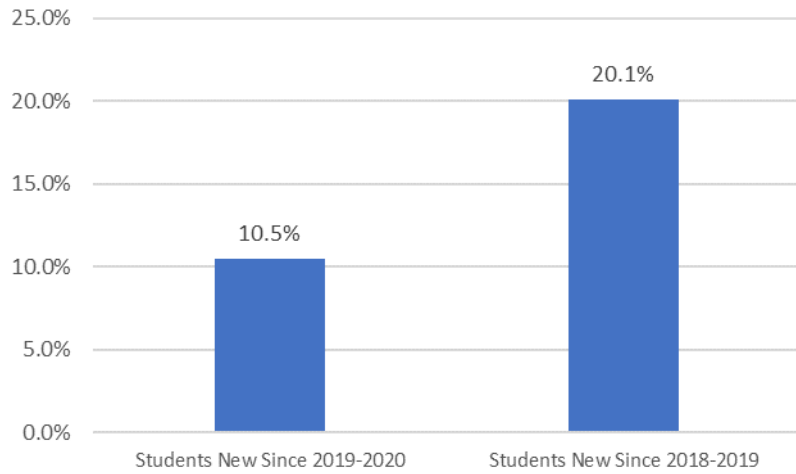
Mobility by School. This graph disaggregates the mobility data by school.

Continuous Park Hill Enrollment Since Kindergarten. This graph shows the number of students in each grade level that have been Park Hill School District students for their entire school careers.

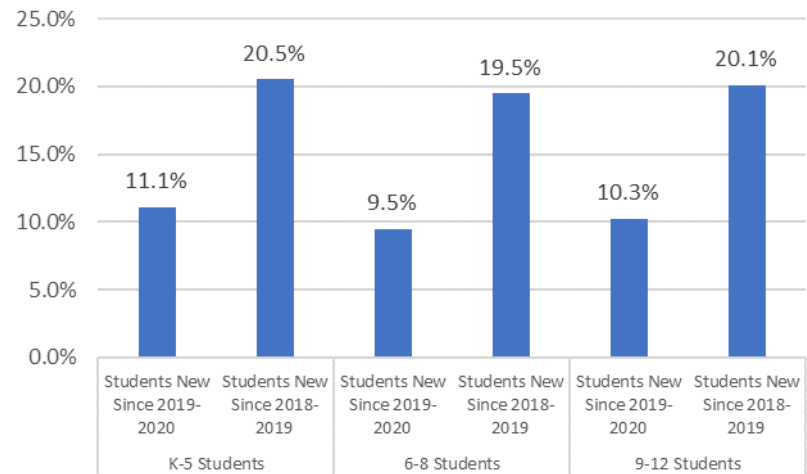
10-Year Historical Mobility of Students. This graph shows the 1- and 2-year mobility rate over the last 10 years.

DISTRICT MOBILITY

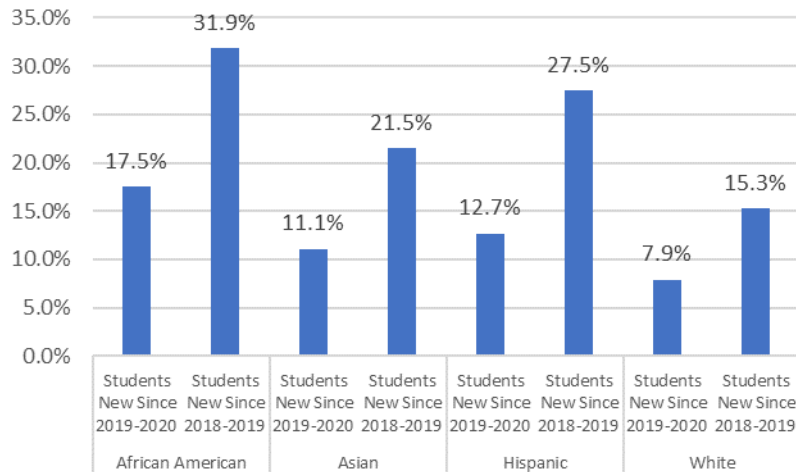
District Mobility



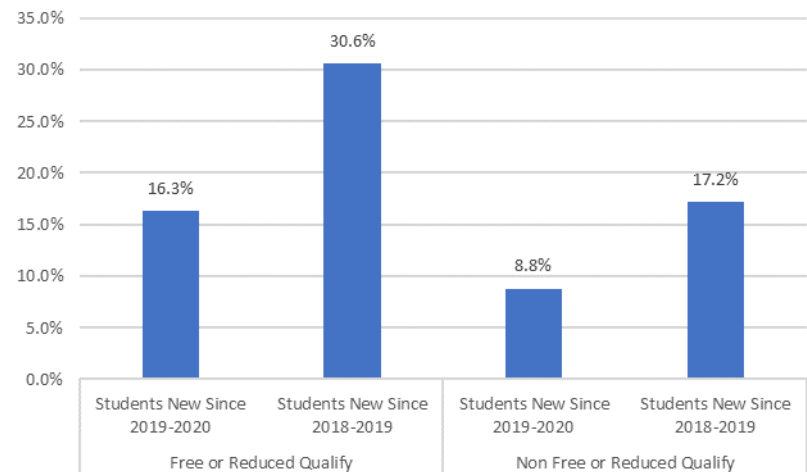
Mobility by Grade Span



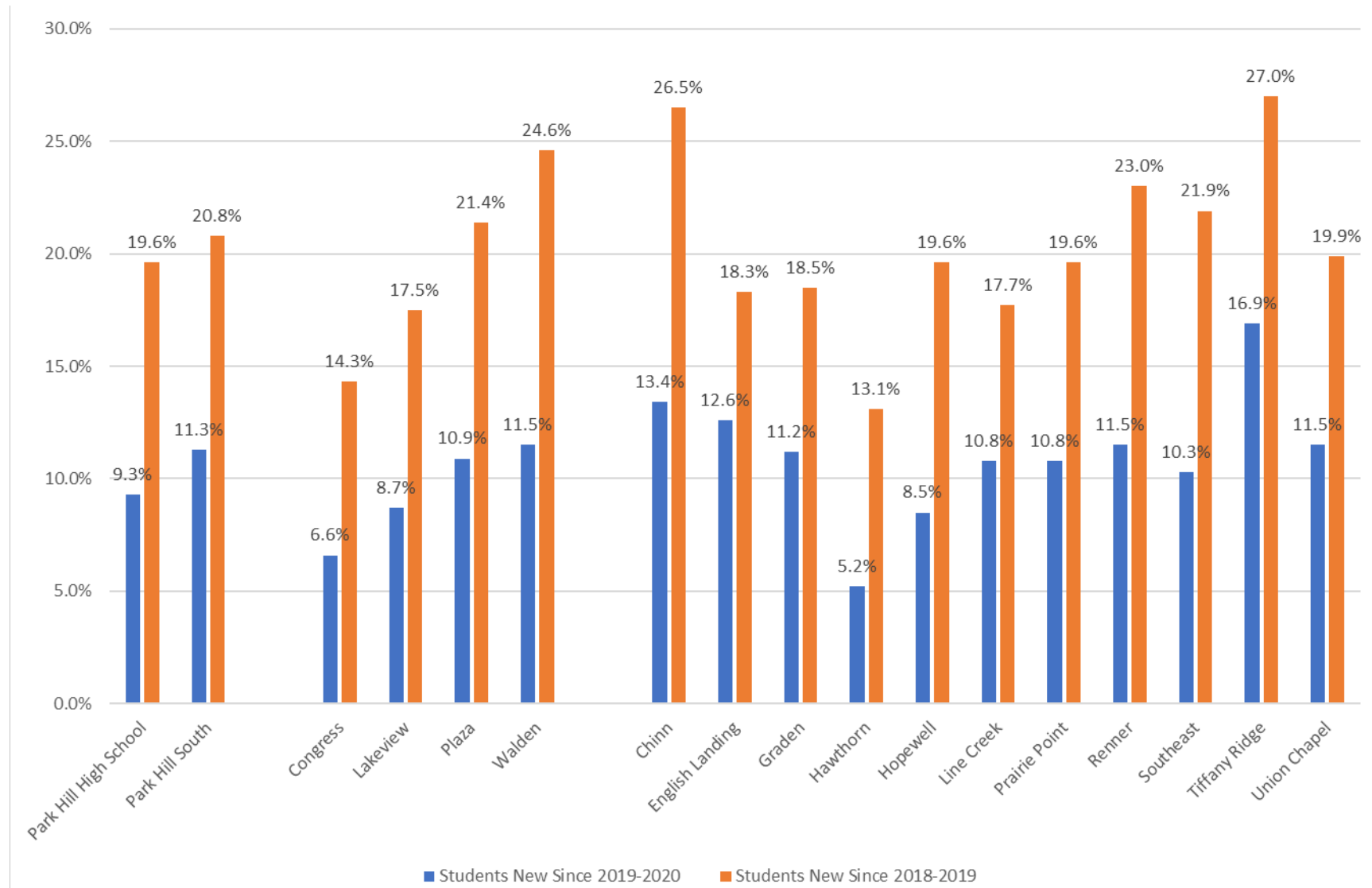
Mobility by Ethnicity



Mobility by Free and Reduced Lunch Status

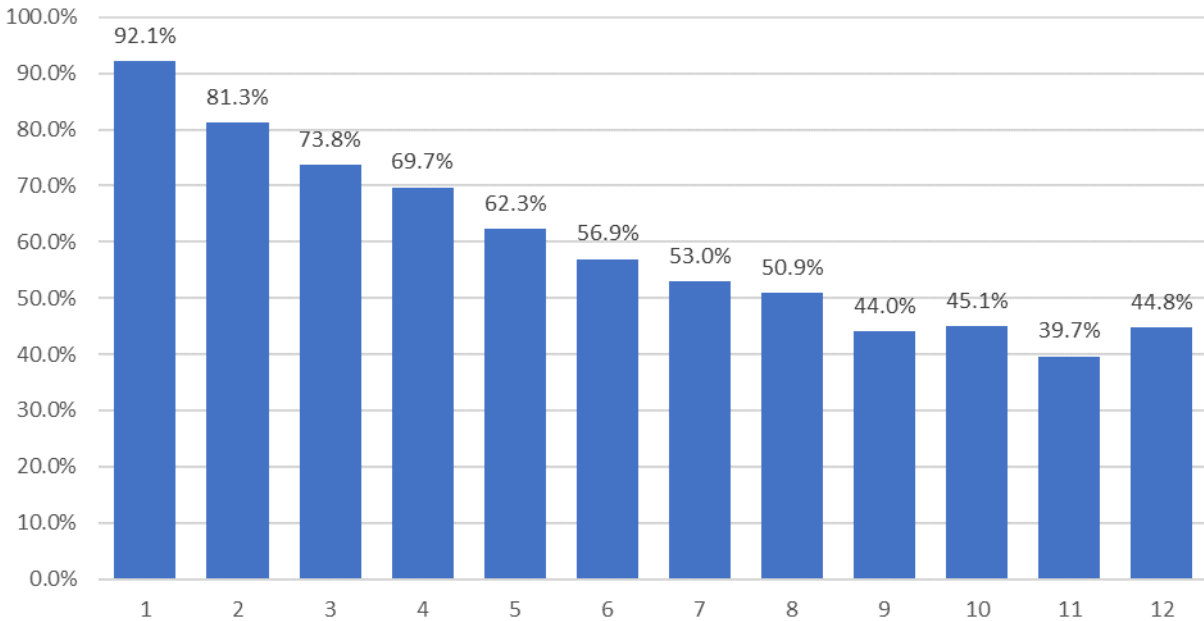


Mobility by School



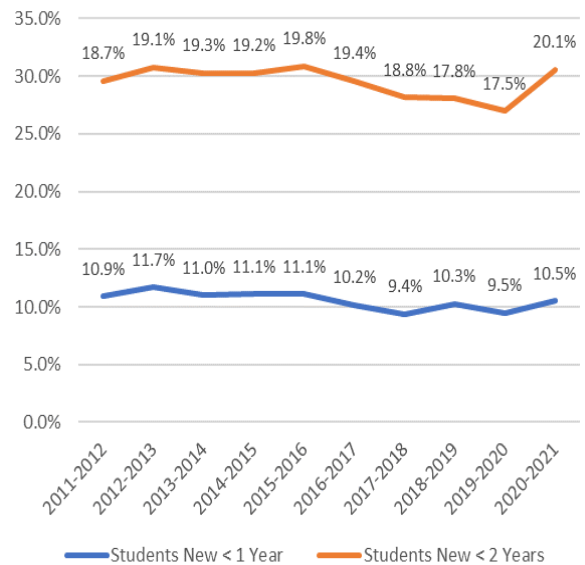
CONTINUOUS PARK HILL ENROLLMENT SINCE KINDERGARTEN (CURRENT YEAR)

The table below shows the percentage of each current grade level cohort that have been enrolled continuously since kindergarten. For example, 44.8% of the district’s current 12th grade/senior class has been enrolled continuously in the school district since their kindergarten year.



10-YEAR HISTORICAL MOBILITY OF STUDENTS

School Year	Students in Park Hill School District < 1 Year	Students in Park Hill School District < 2 Years
2011-2012	10.9%	18.7%
2012-2013	11.7%	19.1%
2013-2014	11.0%	19.3%
2014-2015	11.1%	19.2%
2015-2016	11.1%	19.8%
2016-2017	10.2%	19.4%
2017-2018	9.4%	18.8%
2018-2019	10.3%	17.8%
2019-2020	9.5%	17.5%
2020-2021	10.5%	20.1%



SUPPORTING DEMOGRAPHIC DATA

PLATTE COUNTY LIVE BIRTHRATES AND KINDERGARTEN ENROLLMENTS

COLLECTING BIRTHRATE DATA

Birthrate data is collected for Platte County by the Missouri Department of Health and is utilized in projecting future kindergarten class sizes. Although not all Platte County births ultimately attend Park Hill schools (four public school districts service families in Platte County), there has been a historical link between the live birthrate in the county, and the subsequent kindergarten enrollment. For example, 2010 yielded one the highest number of births that Platte County had ever seen (1,157), and subsequently yielded Park Hill School District’s largest kindergarten class during the 2015-2016 school year (852). This cohort will continue to grow as they move through their educational careers in Park Hill – a phenomenon known as “cohort growth”.

The kindergarten class of 2020-2021 is 812 students and represents a decrease in the kindergarten class from 2019-2020 (-53). The percentage of Platte County births compared to kindergarten enrollment five years later continues to fall within the range of 67-73%, currently at a five-year average of 72.5%.

BIRTHRATE AND KINDERGARTEN CLASS SIZE DATA

The table below lists the Platte County birth data and corresponding kindergarten enrollment (5 years later).

Birth Year	Platte County Live Births	Increase	Kindergarten Year	Park Hill Kindergarten Enrollment	% of Platte County Live Births as Students in PHSD Kindergarten Class	Kindergarten Increase
2004	1,062	49	2009-2010	705	66.4%	-22
2005	1,090	+49	2010-2011	744	68.3%	+40
2006	1,087	-3	2011-2012	752	69.2%	+8
2007	1,082	-5	2012-2013	771	71.3%	+19
2008	1,090	+8	2013-2014	788	72.3%	+17
2009	1,090	0	2014-2015	822	75.4%	+34
2010	1,129	+39	2015-2016	851	75.4%	+29
2011	1,158	+29	2016-2017	792	68.4%	-59
2012	1,145	-13	2017-2018	831	72.6%	+39
2013	1,139	-6	2018-2019	819	71.9%	-12
2014	1,122	-17	2019-2020	865	77.1%	+46
2015	1,158	+36	2020-2021	812	70.1%	-53

HOUSEHOLD DATA

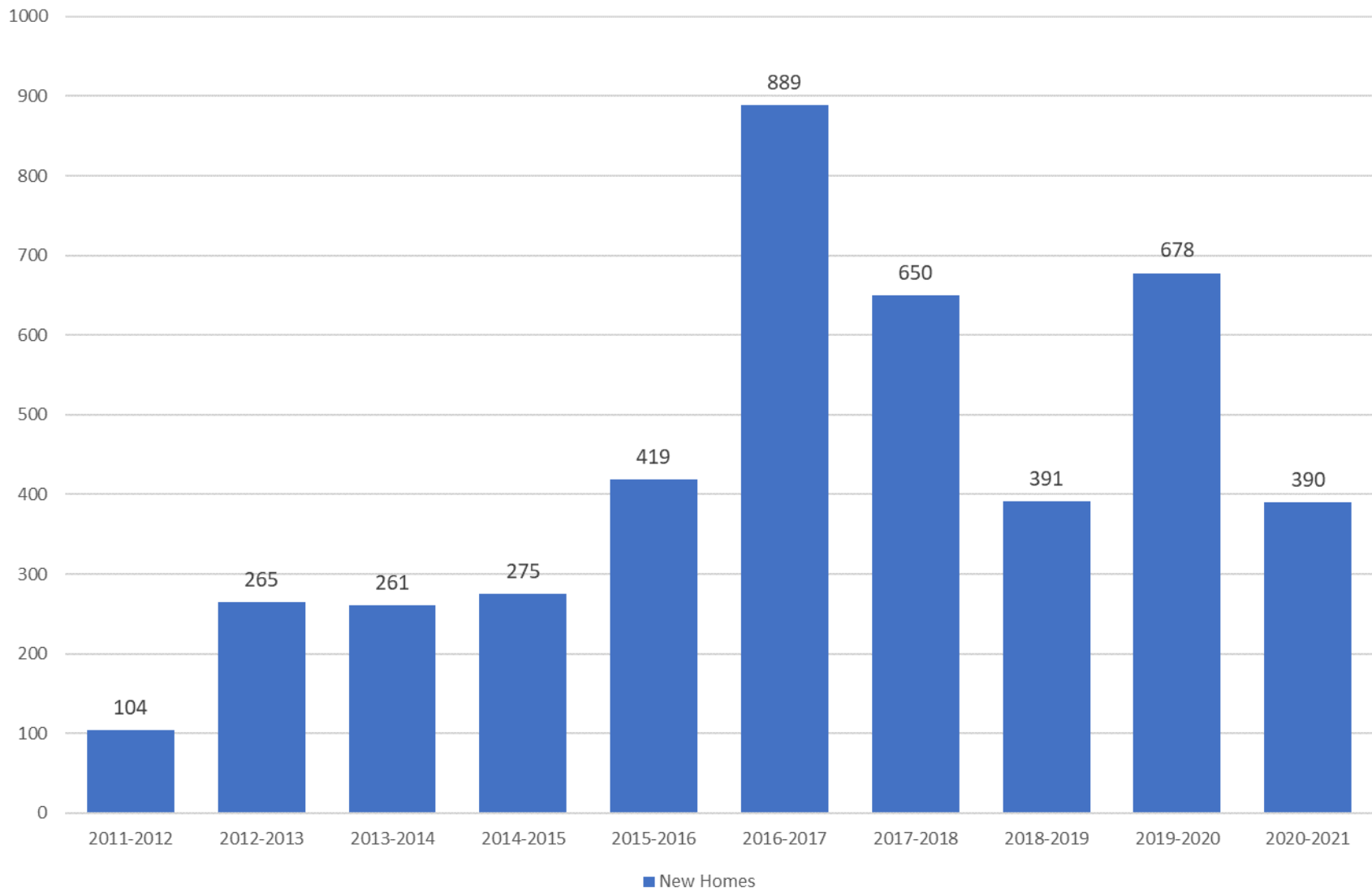
New households within the Park Hill School District communities are calculated through review of monthly reports submitted to the district by the Home Builders Association of Greater Kansas City, Platte County (Permit Reports), and the Kansas City Planning and Development Department. Households are classified as either single-family residences, or multi-family residences. Multi-family residences include duplexes, four-plexes and apartment complexes.

As of 2019-2020, the communities that make up the Park Hill School District includes 32,563 households. This equates to approximately 0.36 school-aged (K-12) children per household. Households have steadily increased over the last twenty years as more residential development has occurred. Since 1980, the district has seen an annual increase in new households at approximately 480 new households per year. In 2018, 391 new households were constructed, reflecting the lowest number of new households since 2014 (275). New home construction in the Park Hill School District is consistent with the metropolitan Kansas City area.

The next page includes the graph:

New Households within the School District – 10-Year History. This graph shows the number of new homes constructed within the school district over the last ten years.

NEW HOUSEHOLDS WITHIN THE SCHOOL DISTRICT – 10-YEAR HISTORY



SCHOOL-AGE CHILDREN WITHIN PARK HILL SCHOOL DISTRICT HOUSEHOLDS

The number of students per household in the Park Hill School District has remained steady over the last decade. The table below shows data from the last ten years, with the number of households in the Park Hill School District in 2020-2021 at 33,631.

As of 2020-2021, **each Park Hill household yields 0.3478 K-12 students**, or approximately 1 student per every 3 households. The number of K-12 students per household in the district has remained between 0.348 to 0.363 over the last ten years.

School Year	District Enrollment	Households in PHSD	Students Per Household
2010-2011	10,163	29,309	0.3468
2011-2012	10,257	29,413	0.3487
2012-2013	10,408	29,678	0.3507
2013-2014	10,467	29,939	0.3496
2014-2015	10,684	30,214	0.3536
2015-2016	11,069	30,633	0.3613
2016-2017	11,240	31,522	0.3566
2017-2018	11,458	32,172	0.3561
2018-2019	11,617	32,563	0.3568
2019-2020	11,709	33,241	0.3522
2020-2021	11,698	33,631	0.3478
		3 Year Average	0.3522
		7 Year Average	0.3548

FUTURE ENROLLMENT PROJECTIONS

One benefit to tracking district enrollment trends is the ability to utilize the trend data to project future enrollment. Predicting future enrollment is an important piece in many school processes: long-range planning, budgeting, staffing, and predicting future building and capital needs. The Park Hill School District has utilized two tools to predict future enrollment – cohort growth and household construction patterns. These tools allow for three projection models (3-Year Cohort, 7-Year Cohort, Household) that create an anticipated range of enrollment for future years.

PROJECTION METHODS

COHORT SURVIVAL METHOD

Two of the three methods of projecting student enrollment for future years involve the use of “cohort survival.” Cohort survival is a measure of the rate at which students grouped by grade level pass into the next grade level a year later. For example, in 2017-2018 Park Hill School District’s class of 2nd graders was 914. A year later, this class became a third-grade class of 923. Using this example, the rate of cohort survival (0.98% increase) is calculated in the following way:

$$(894-879)/879 = 0.98\%$$

The 0.98% increase is a measure of the likelihood our second-grade class will become larger or smaller as the class passes into the third grade the following year.

To minimize the effects of an exceptional year, three- and seven-year cohorts are calculated by averaging the cohort survival for three- and seven-years respectively. The following tables show how three-year and seven-year cohort survival averages are calculated.

3-YEAR COHORT PROJECTION METHOD

To determine projections based upon the three-year cohort, the three-year cohort survival rate is calculated for each grade level, and these rates are added to the previous year's enrollment. For example, projections for the 1st grade class of 2021-2022 are based upon the 2020-2021 kindergarten enrollment (a known value of 812) and the survival rate of the last three years in which a kindergarten class has become 1st graders (+2.1%).

Therefore, the projection for the 2020-2021 1st grade class using this method is 829 students [$812 + (812 \times 2.1\%) = 829$].

Kindergarten to First Grade

3-Year Cohort Growth

School Year	Students in First Grade	Students in Kindergarten in Prior Year	% Increase
2018-2019	879	831	5.8%
2019-2020	826	819	0.9%
2020-2021	863	865	-0.2%
	2,568	2,515	2.1%

Projections for subsequent years are calculated using the same three-year cohort survival rates for each grade level.

7-YEAR COHORT PROJECTION METHOD

To determine projections based upon the seven-year cohort, the seven-year cohort survival rate is calculated for each grade level, and these rates are added to the previous year's enrollment. For example, projections for the 2021-2022 9th grade class is based upon the 2020-2021 8th grade enrollment (a known value of 920) and the survival rate of the last seven years in which an 8th grade class becomes the 9th grade class (+7.2%). Therefore, the projection for the 2021-2022 9th grade class using this method is 986 students [$920 + (920 \times 7.2\%) = 986$].

8th Grade to 9th Grade

7-Year Cohort

School Year	Students in Ninth Grade	Students in 8th Grade in Prior Year	% Increase
2014-2015	847	808	4.8%
2015-2016	951	865	9.9%
2016-2017	927	866	7.0%
2017-2018	950	892	6.5%
2018-2019	945	869	8.7%
2019-2020	911	850	7.2%
2020-2021	966	911	6.0%
	6,497	6,061	7.2%

Projections for subsequent years are calculated using the same seven-year cohort survival rates for each grade level.

COHORT INDICES

The chart below represents the indices used to project growth from one grade level to the next, utilizing 3-year and 7-year cohort figures. These are current values utilizing data from 2010-2011 to 2020-2021 enrollments.

Cohort Movement	3 Year Cohort Growth Index	7 Year Cohort Growth Index
K-1	2.56%	3.52%
1-2	1.99%	2.27%
2-3	0.12%	1.28%
3-4	1.18%	2.32%
4-5	1.29%	1.92%
5-6	2.78%	2.43%
6-7	1.36%	3.89%
7-8	-0.50%	0.19%
8-9	6.75%	7.48%
9-10	-1.81%	-1.40%
10-11	-1.23%	-0.90%
11-12	-0.91%	-1.31%

PREDICTING BIRTHRATES

One challenge posed in using cohort survival as a projection method is estimating the size of the kindergarten class in future years. Since cohort survival cannot be calculated for the kindergarten class (no class comes before it in previous years), Platte County birthrates are used to estimate the kindergarten class size each year. Over the last three years, an average of 73.4% of births in Platte County (known as “live births”) have attended kindergarten in Park Hill School District schools five years later. For example, in 2014 Platte County reported 1,106 live births. Five years later, in school year 2019-2020, 865 kindergarten students were enrolled in Park Hill School District.

Using known values for Platte County birthrates in years 2016 through 2019, kindergarten enrollment for school years 2021-2022 through 2024-2025 can be estimated based upon known birthrates. To calculate this, a regression with live birth as the dependent variable and change per year as the independent variable is utilized to produce a growth curve model that takes into account the non-linear change pattern.

Kindergarten enrollment estimations past the school year 2023-2025 cannot be calculated based upon known births (these children have not yet been born). Values for these kindergarten enrollments are based upon a predicted number of children born in Platte County. To predict this, the same growth curve explained above is used and a regression using kindergarten enrollment as the dependent variable and live births and current year as the independent variable is made. Projections made from 3 years of birth data are input into the 3-year cohort projection model, and projections made from 7 years of birth data are included in the 7-year cohort projection model.

KINDERGARTEN CLASS SIZE PROJECTIONS

School Year	3-Years of Data	7-Years of Data
2020-2021	855	849
2021-2022	903	897
2022-2023	895	889
2023-2024	891	884
2024-2025	911	896
2025-2026	905	912
2026-2027	912	927
2027-2028	919	940
2028-2029	920	946
2029-2030	928	951

Using these projection models, the kindergarten class size for 2021-2022 is projected to be between 849 (7-Year Projection) and 855 (3-Year Projection) students.

HOUSEHOLD PROJECTIONS METHOD

Enrollment projections, based on households, also provides an opportunity to determine student enrollment. By dividing the number of school-age children (currently 11,698) into the number of homes in the school district (33,631), the average number of school-age children per household can be calculated. The 2020-2021 rate is 0.3478 students per household.

As the district continues to increase households, the number of students per household multiplied by the projected households will provide an enrollment projection. To make these projections the following steps are followed:

1. Project the number of households in the Park Hill School District based upon historical growth.
2. Project the number of students per household based upon historical growth.
3. Calculate district enrollment based upon the above two projections.
4. Distribute the enrollment across grade levels based on historical distribution.

For the household projection method, the district is anticipating the new homes in each year and the students per household values as described in the following table. For these projections, a 3-year average of students per household is used (0.3550).

School Year	Projected Households	Students Per Household	Projected Enrollment
2021-2022	34,021		11,854
2022-2023	34,411	0.3478	11,967
2023-2024	34,801	0.3478	12,105
2024-2025	35,191	0.3478	12,242
2025-2026	35,581	0.3478	12,376
2026-2027	35,971	0.3478	12,514
2027-2028	36,361	0.3478	12,647
2028-2029	36,751	0.3478	12,782
2029-2030	37,141	0.3478	12,920
2030-2031	37,531	0.3478	13,053
2031-2032	37,921	0.3478	13,189

The following pages include the student enrollment projections described below:

Student Enrollment Projection Summary – Tables. These three tables summarize the grade span sizes projected for the next eleven years by three different methods.

Student Enrollment Projection Summary – Graph. This graph summarizes the grade span sizes for the current school year and projections for the next eleven years by three different methods.

STUDENT ENROLLMENT PROJECTIONS

STUDENT ENROLLMENT PROJECTION SUMMARY – TABLES

Projections made from 3-Year Cohort Growth Data

Grade Level	2021-2022	2022-2023	2023-2024	2024-2025	2025-2026	2026-2027	2027-2028	2028-2029	2029-2030	2030-2031	2031-2032
K	894	890	886	892	890	887	885	883	881	879	876
1	871	917	913	909	915	913	910	908	906	904	902
2	880	888	935	931	927	933	931	928	926	924	922
3	858	881	889	936	932	928	934	932	929	927	925
4	883	868	891	899	947	943	939	945	943	940	938
5	878	894	879	902	911	959	955	951	957	955	952
6	959	902	919	903	927	936	986	982	977	984	982
7	967	972	914	931	915	940	949	999	995	990	997
8	933	962	967	909	926	910	935	944	994	990	985
9	985	996	1,027	1,032	970	989	971	998	1,008	1,061	1,057
10	946	967	978	1,008	1,013	952	971	953	980	990	1,042
11	892	934	955	966	996	1,001	940	959	941	968	978
12	908	884	925	946	957	987	992	931	950	932	959
Total	11,854	11,955	12,078	12,164	12,226	12,278	12,298	12,313	12,387	12,444	12,515

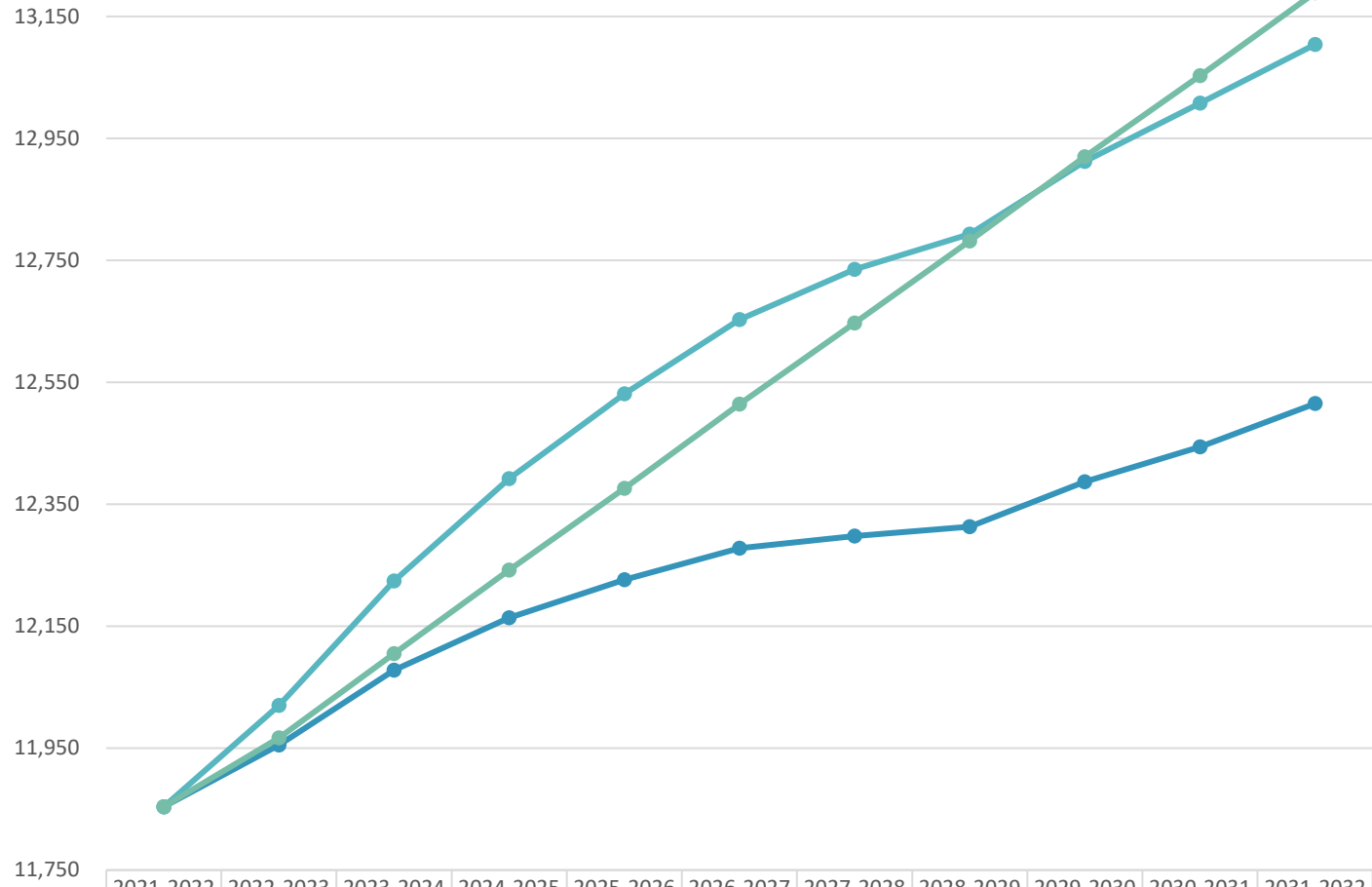
Projections made from 7-Year Cohort Growth Data

Grade Level	2021-2022	2022-2023	2023-2024	2024-2025	2025-2026	2026-2027	2027-2028	2028-2029	2029-2030	2030-2031	2031-2032
K	894	880	886	892	890	887	885	883	881	879	876
1	871	925	911	917	923	921	918	916	914	912	910
2	880	891	946	932	938	944	942	939	937	935	933
3	858	891	902	958	944	950	956	954	951	949	947
4	883	878	912	923	980	966	972	978	976	973	971
5	878	900	895	930	941	999	985	991	997	995	992
6	959	899	922	917	953	964	1,023	1,009	1,015	1,021	1,019
7	967	996	934	958	953	990	1,001	1,063	1,048	1,054	1,061
8	933	969	998	936	960	955	992	1,003	1,065	1,050	1,056
9	985	1,003	1,042	1,073	1,006	1,032	1,026	1,066	1,078	1,145	1,129
10	946	971	989	1,027	1,058	992	1,018	1,012	1,051	1,063	1,129
11	892	937	962	980	1,018	1,048	983	1,009	1,003	1,042	1,053
12	908	880	925	949	967	1,005	1,034	970	996	990	1,028
Total	11,854	12,020	12,224	12,392	12,531	12,653	12,735	12,793	12,912	13,008	13,104

Projections made from Household Growth Data

Grade Level	2021-2022	2022-2023	2023-2024	2024-2025	2025-2026	2026-2027	2027-2028	2028-2029	2029-2030	2030-2031	2031-2032
K	894	871	1,772	901	911	921	930	940	950	960	970
1	871	880	1,790	910	920	930	940	950	960	970	980
2	880	887	1,804	917	927	937	947	957	967	977	987
3	858	902	1,835	933	943	953	963	974	984	994	1,004
4	883	909	1,850	940	951	961	971	982	992	1,002	1,012
5	878	935	1,902	967	978	988	999	1,009	1,020	1,031	1,041
6	959	952	1,937	984	995	1,006	1,017	1,028	1,038	1,049	1,060
7	967	950	1,933	983	993	1,004	1,015	1,026	1,036	1,047	1,058
8	933	923	1,877	954	965	975	985	996	1,006	1,017	1,027
9	985	977	1,988	1,011	1,022	1,033	1,044	1,055	1,066	1,077	1,088
10	946	939	1,910	971	982	992	1,003	1,014	1,024	1,035	1,045
11	892	931	1,895	963	974	984	995	1,005	1,016	1,026	1,037
12	908	911	1,854	942	953	963	973	984	994	1,004	1,015
	11,854	11,967	24,347	12,376	12,514	12,647	12,782	12,920	13,053	13,189	13,324

STUDENT ENROLLMENT PROJECTION SUMMARY – GRAPH



	2021-2022	2022-2023	2023-2024	2024-2025	2025-2026	2026-2027	2027-2028	2028-2029	2029-2030	2030-2031	2031-2032
3 Year Cohort Growth Model	11,854	11,955	12,078	12,164	12,226	12,278	12,298	12,313	12,387	12,444	12,515
7 Year Cohort Growth Model	11,854	12,020	12,224	12,392	12,531	12,653	12,735	12,793	12,912	13,008	13,104
Household Growth Model	11,854	11,967	12,105	12,242	12,376	12,514	12,647	12,782	12,920	13,053	13,189

FACILITY PLANNING

One use of student enrollment projections is to anticipate the need for additional school buildings. Although projections are not made for growth of each school, projections are made for each school level – elementary (kindergarten through 5th Grade), middle (6th through 8th Grade) and high school level (9th through 12th Grade). Also, facility needs for early childhood services (pre-kindergarten), students with special needs, and support services are also influenced by enrollment growth. Projections when each level will reach effective capacity can be anticipated through the use of planning criteria.

PLANNING CRITERIA

In the Fall, 2014, the Board of Education approved a set of facility planning criteria to assist the district in preparing for future space and/or facility needs. The 19 criteria were each tied to a Comprehensive School Improvement Plan (CSIP) goal, which form the foundation of the district's strategic plan. The criteria and CSIP goal alignment are detailed below.

21st Century Learning. We will continue to improve how we educate our learners. Our district will seek out new opportunities to teach and model to our students the effective use of technology to support learning, collaboration, critical thinking, and problem-solving skills.

Grade Configurations. We will provide grade configurations that ensure educational success through (1) minimizing the number of student transitions between district attendance centers; (2) seeking to streamline district feeder patterns to build a greater sense of tradition and community; and (3) identifying grade configurations that encourage and foster relationships between students, teachers, administrators and parents.

Specialized Spaces. We value diverse opportunities for each learner. Specialized and innovative facilities will be provided that support instruction of core curriculum, electives, student activities and athletics to ensure that each student is provided a balanced learning experience. Specialized spaces may include, but are not limited to, science labs, music rooms, auditoriums, media centers, gymnasiums, and athletic fields.

Special Education. We will provide appropriately designed and equipped spaces for each learner.

Student-Teacher Ratio. We will provide effective student-teacher ratios based on district standards and Missouri Department of Elementary and Secondary Education recommendations for considering building capacities and staffing.

Maintain Quality Facilities. We will provide quality facilities to our students through ongoing maintenance, renovations and repurposing of existing facilities.

Early Childhood Programming. We will continue to provide an early childhood education program to address the learning needs of young children and to prepare them for future success.

Safety and Security. We will include safety and security features in our building projects that help staff and students respond to natural disasters, potential violent acts and general supervision.

Temporary Classrooms. For educational, financial and safety reasons, we will not consider mobile or other temporary classrooms as a long-term solution to growth in enrollment or programs.

Land Requirements for Schools. We will plan for the purchase of land for new and existing facilities prior to need.

- Elementary Schools: 14-20 acres (provide 10-15 acres, plus one acre for every 100 students)
- Middle Schools: 26-40 acres (provide 20-30 acres, plus one acre for every 100 students)
- High Schools: 40-55 acres (provide 30-40 acres plus one acre for every 100 students, and consider an additional 40 acres for competitive playfields and parking)

These are consistent with local school planning standards.

Appropriate Areas for Learning. We will provide appropriate space for each learner based upon a local, regional and national set of standards. Standards have been set at the following:

- High Schools: 175 square foot per learner
- Middle Schools: 150 square foot per learner
- Elementary Schools: 120 square foot per learner
- District Wide: 145 square foot per learner

The standards are consistent with *Council of Educational Facility Planners International* and recent school construction projects.

School Size. We will establish effective school size based upon research, community input and the maximization of existing resources. Standards have been set at the following:

- High Schools: 1,200 to 1,800 students
- Middle Schools: 500 to 900 students
- Elementary Schools: 400 to 650 students

Partnering for Success. We will look for opportunities to maximize student academic success through partnerships with external organizations such as post-secondary, technical trade, business, non-profit and civic organizations.

Recruit, Retain and Develop Staff. We will deploy strategies to recruit, retain and develop the highest quality staff that create the highest quality students. Needs for specialized environments for training, coaching and collaboration for 21st century learning will be considered.

Technology. We will address strategies to maintain and improve technology hardware, software, training, delivery, dependability and the security of data to support students and staff.

Support Service. We will demonstrate operational effectiveness and address district growth by providing quality support services, such as Nutrition Services, Transportation, Maintenance and Operations, Technology, and community use of facilities.

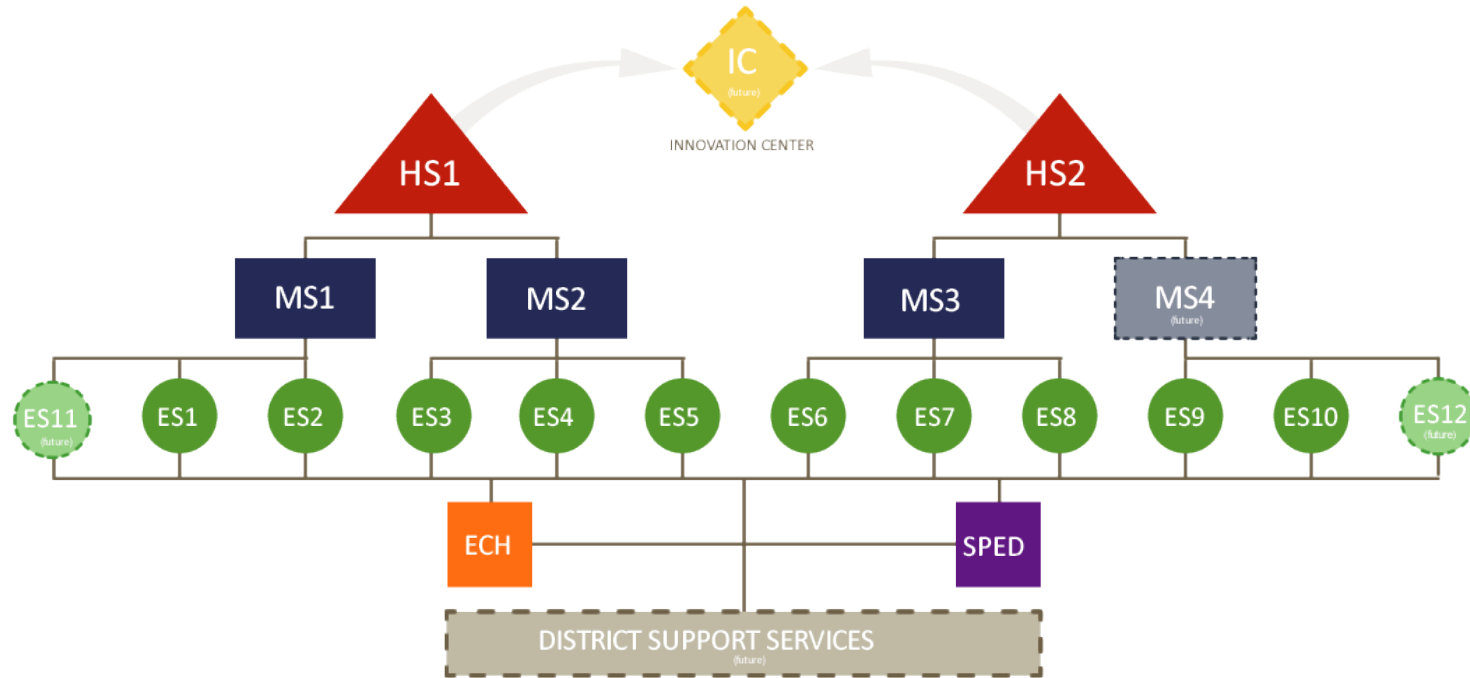
Financial Stewardship. We will seek out strategies to minimize the overall cost of financing capital improvements. Broad considerations of costs related to both short- and long-term debt and potential “no-tax-increase” bond issues will be integrated into planning strategies.

Focus on Long-Term Value. We will emphasize long-term value when designing, constructing and renovating district facilities. Decisions will be based on return-on-investment and life cycle methodologies and long-term maintainability and sustainability.

Future Enrollment. We will use current and historical data in association with proven enrollment projection methodologies to forecast future district enrollment growth.

LONG-RANGE FACILITY PLAN

In the Spring, 2015, the Park Hill Board of Education adopted the following plan to address future space needs brought on by the projected enrollment growth over the next ten years. The plan entails the construction of a facility for support services, the addition of two elementary schools, the addition of a Middle School, and additional classroom space for high school programming.



SCHOOL CAPACITY ANALYSIS

In educational planning, one way to calculate building capacity is based upon gross square footage per student calculations. The *Council of Educational Facility Planners International* (CEFPI) and other organizations and states have created standards for the amount of gross square footage needed within schools to effectively maintain the educational programming demands of today’s schools. The gross square footage standards in the table below have been established based upon standards published by CEFPI, and from a review of state and local standards on construction of new facilities for each grade span. These square footage standards have been adopted by the Park Hill School District Board of Education in the Facility Planning – Planning Criteria.

School Type	Target Square Footage Per Student “Effective Capacity”	Highest Limit Square Footage Per Student “Efficiency Capacity”	Lower Limit Square Footage Per Student “Functional Capacity”
Elementary Schools	120	129	111
Middle Schools	150	165	135
High Schools	175	197	153
Support Services	12	14	10

Target square footage per student capacities are listed above as “Effective Capacity”. Ranges have been established around the target and defined as “Efficiency Capacity” which is the upper limit of space needed per student before the space available exceeds what is needed, and the “Functional Capacity” which is the lower limit of square footage per student before the operation of the school and programs is hindered by lack of space.

CURRENT FACILITY CAPACITY

The following table details the anticipated square footage in each Park Hill facility for the 2021-2022 school year. Percent utilization refers to the ratio of projected students to the effective capacity of the school as measured by the district's square footage standards described on the prior page. In addition, each grade span is totalled to better understand the overall district condition for each grade level.

ELEMENTARY SCHOOLS

School	Gross Square Footage	Temporary Square Footage	Total Square Footage	Current Year Program Enrollment	Effective Student Capacity Standard	School Effective Student Capacity	Division
4020 - THOMAS B. CHINN ELEMENTARY	60,434	1,536	61,970	475	120	516	92.0%
4040 - GRADEN ELEMENTARY	53,374		53,374	491	120	445	110.4%
4060 - LINE CREEK ELEMENTARY	48,333		48,333	358	120	403	88.9%
4080 - ALFRED L. RENNER ELEMENTARY	48,617	1,536	50,153	484	120	418	115.8%
5000 - SOUTHEAST ELEMENTARY	54,422		54,422	495	120	454	109.1%
5020 - UNION CHAPEL ELEMENTARY	55,582	3,072	58,654	563	120	489	115.2%
5040 - ENGLISH LANDING ELEMENTARY	60,003		60,003	434	120	500	86.8%
5060 - PRAIRIE POINT ELEMENTARY	64,360		64,360	418	120	536	77.9%
5080 - HAWTHORN ELEMENTARY	63,868	1,536	65,404	471	120	545	86.4%
5090 - TIFFANY RIDGE ELEMENTARY	70,842		70,842	512	120	590	86.7%
5095 - HOPEWELL ELEMENTARY	71,000		71,000	454	120	592	76.7%
	650,835	7,680	658,515	5,155		5,488	93.9%

MIDDLE SCHOOLS

School	Gross Square Footage	Temporary Square Footage	Total Square Footage	Current Year Program Enrollment	Effective Student Capacity Standard	School Effective Student Capacity	Division
3000 - LAKEVIEW MIDDLE SCHOOL	119,681		119,681	660	150	798	82.7%
3030 - CONGRESS MIDDLE SCHOOL	121,877		121,877	708	150	813	87.1%
3050 - PLAZA MIDDLE SCHOOL	114,941		114,941	687	150	766	89.7%
3060 - WALDEN MIDDLE SCHOOL	115,253		115,253	730	150	768	95.0%
	471,752		471,752	2,785		3,145	88.6%

HIGH SCHOOLS/PROGRAMS

School	Gross Square Footage	Temporary Square Footage	Total Square Footage	Current Year Program Enrollment	Effective Student Capacity Standard	School Effective Student Capacity	Division
1020 - LEAD INNOVATION STUDIO	79,000	0	79,000	589	175	451	130.5%
1050 - PARK HILL HIGH SCHOOL	284,101	3,072	287,173	1,557	175	1,641	94.9%
1080 - PARK HILL SOUTH	265,192		265,192	1,547	175	1,515	102.1%
	628,293	3,072	631,365	3,693		3,608	97.7%

FUTURE ENROLLMENT PROJECTIONS BY GRADE SPAN

The table below shows enrollment projections for the following ten years. The highlighted values in the Elementary section indicate enrollments that exceed the 100% utilization mark for the total square footage in each school. The High School enrollments have been highlighted in the year in which all three projection models show the high school enrollment over 4,000 district high school students. Middle Schools have not been highlighted based on projected enrollments not exceeding 100% utilization of all Middle Schools within the projection window.

Grade Span / Label	2021-2022	2022-2023	2023-2024	2024-2025	2025-2026	2026-2027	2027-2028	2028-2029	2029-2030	2030-2031	2031-2032
5000 - ELEMENTARY SCHOOLS											
3-Year Cohort Growth Model	5,264	5,338	5,393	5,469	5,522	5,563	5,554	5,547	5,542	5,529	5,515
7-Year Cohort Growth Model	5,264	5,365	5,452	5,552	5,616	5,667	5,658	5,661	5,656	5,643	5,629
Household Growth Model	5,264	5,384	5,446	5,507	5,568	5,630	5,690	5,750	5,812	5,873	5,934
3000 - MIDDLE SCHOOLS											
3-Year Cohort Growth Model	2,859	2,836	2,800	2,743	2,768	2,786	2,870	2,925	2,966	2,964	2,964
7-Year Cohort Growth Model	2,859	2,864	2,854	2,811	2,866	2,909	3,016	3,075	3,128	3,125	3,136
Household Growth Model	2,859	2,825	2,857	2,890	2,921	2,953	2,985	3,017	3,050	3,080	3,113
1000 - HIGH SCHOOLS											
3-Year Cohort Growth Model	3,731	3,781	3,885	3,952	3,936	3,929	3,874	3,841	3,879	3,951	4,036
7-Year Cohort Growth Model	3,731	3,791	3,918	4,029	4,049	4,077	4,061	4,057	4,128	4,240	4,339
Household Growth Model	3,731	3,758	3,802	3,845	3,887	3,931	3,972	4,015	4,058	4,100	4,142



Park Hill School District

Building Successful Futures • Each Student • Every Day

This Page Left Intentionally Blank

FUTURE DISTRICT GROWTH TRENDS

The school district also monitors population trends within the entire community to assist in long-range planning. By looking at current and projected trends in the populations of school-aged children, child bearing females, and the entire population, critical decisions can be made regarding future programming demands, as well as facility needs.

The next section includes the following maps:

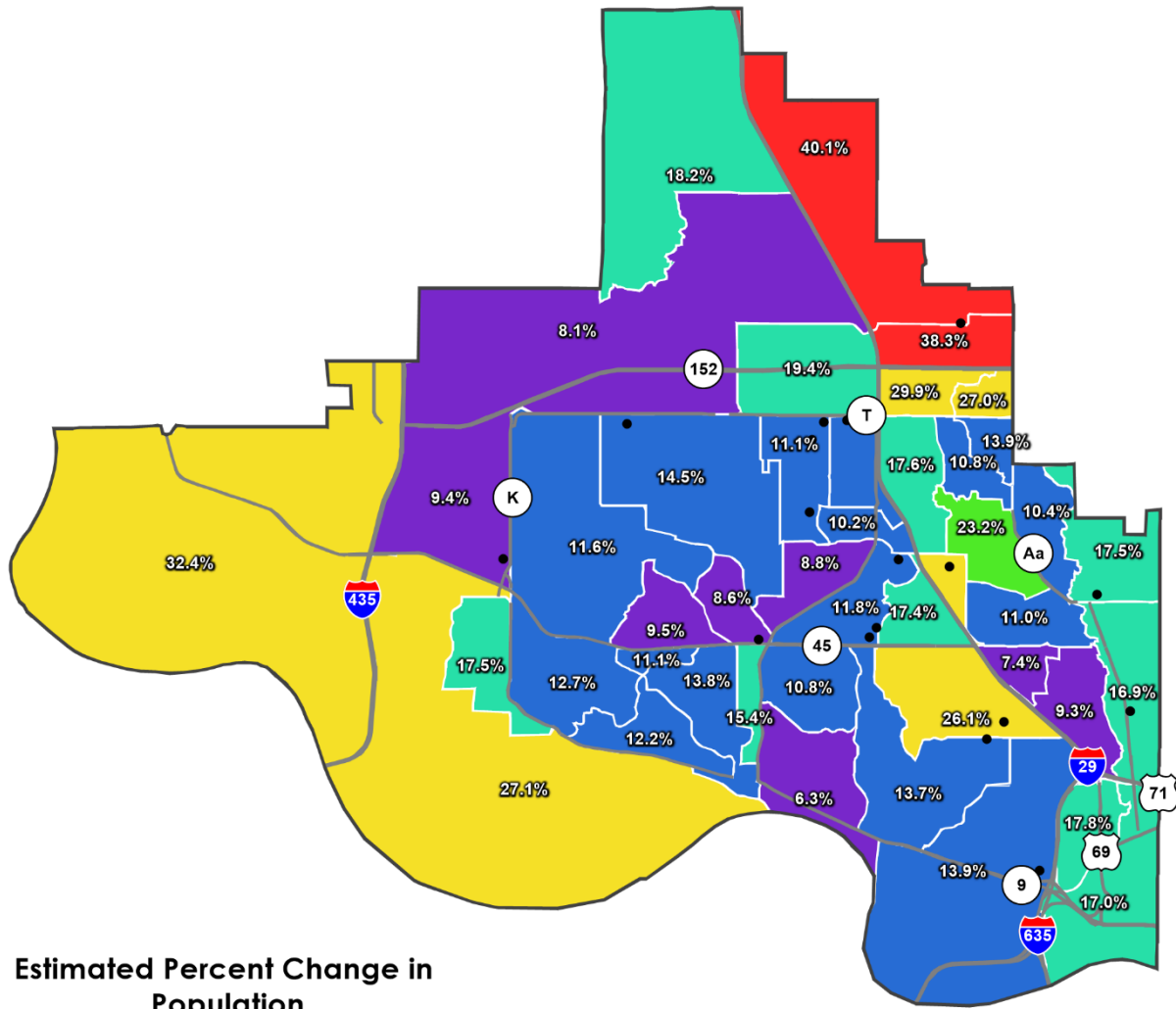
Estimated Population of the Park Hill School District Community. This map shows the estimated population density by census block within the school district. A census block group is a geographical unit used by the United States Census Bureau. It is the smallest geographical unit for which the bureau publishes sample data, i.e. data which is only collected from a fraction of all households.

Estimated Rate of Change in Population. This map shows the projected change in total population by census block group within district boundaries over ten years.

Estimated Children Under the Age of 5. This map shows the estimated population of children under the age of 5 with each census block.

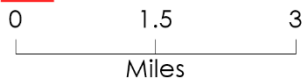
Estimated Change in the Number of Children Under the Age of 5 This map shows the projected change in the number of children less than five years of age population by census block group within district boundaries over ten years.

ESTIMATED RATE OF CHANGE IN POPULATION

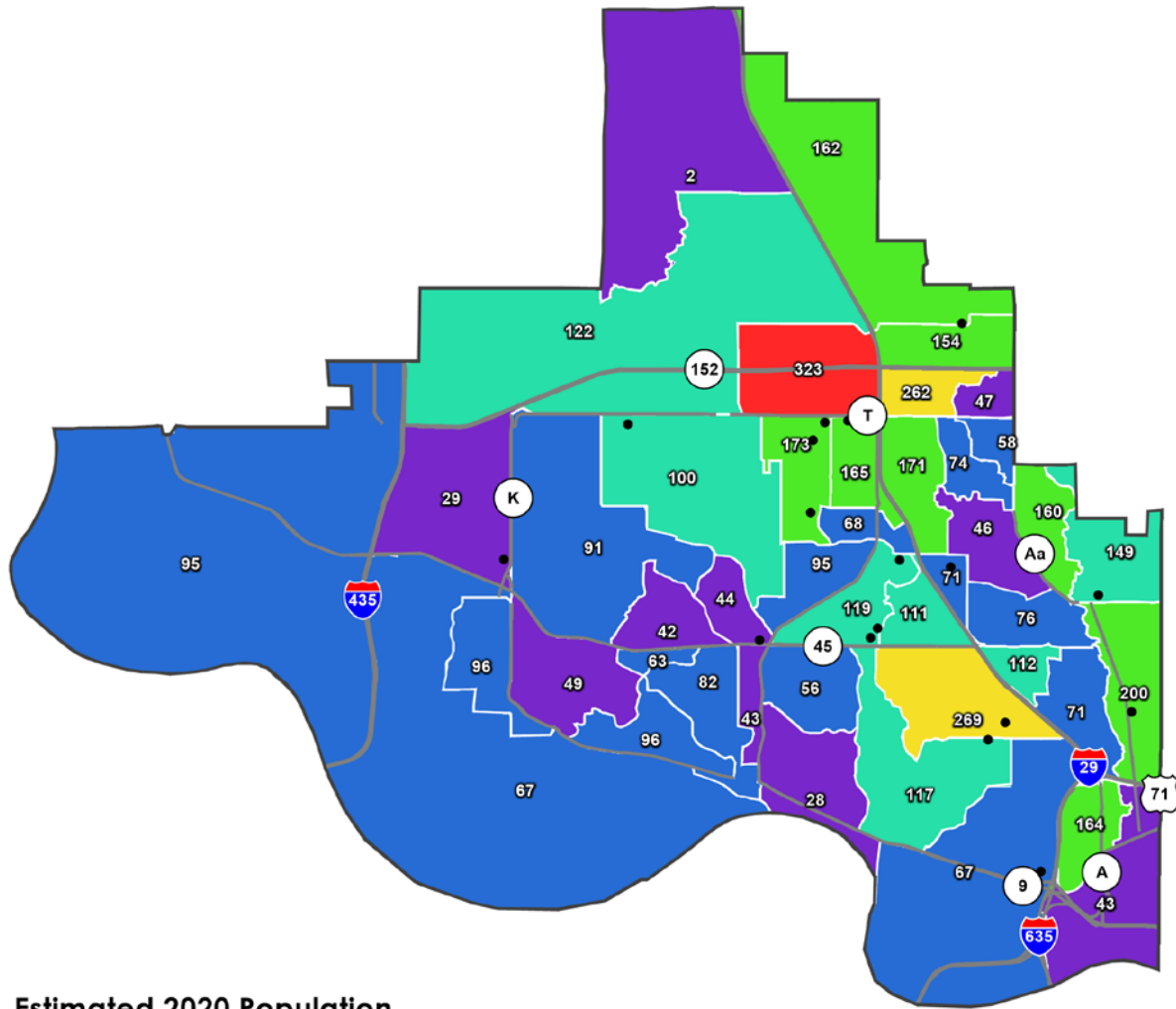


Estimated Percent Change in Population from 2020 to 2030

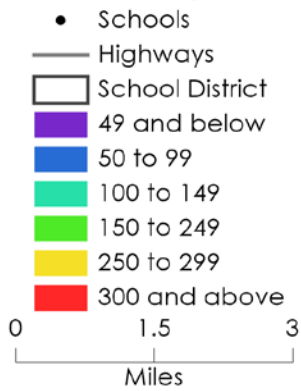
- Schools
- Highways
- School District
- 10.0% and below
- 10.0% to 15.0%
- 15.0% to 20.0%
- 20.0% to 25.0%
- 25.0% to 35.0%
- 35.0% and above



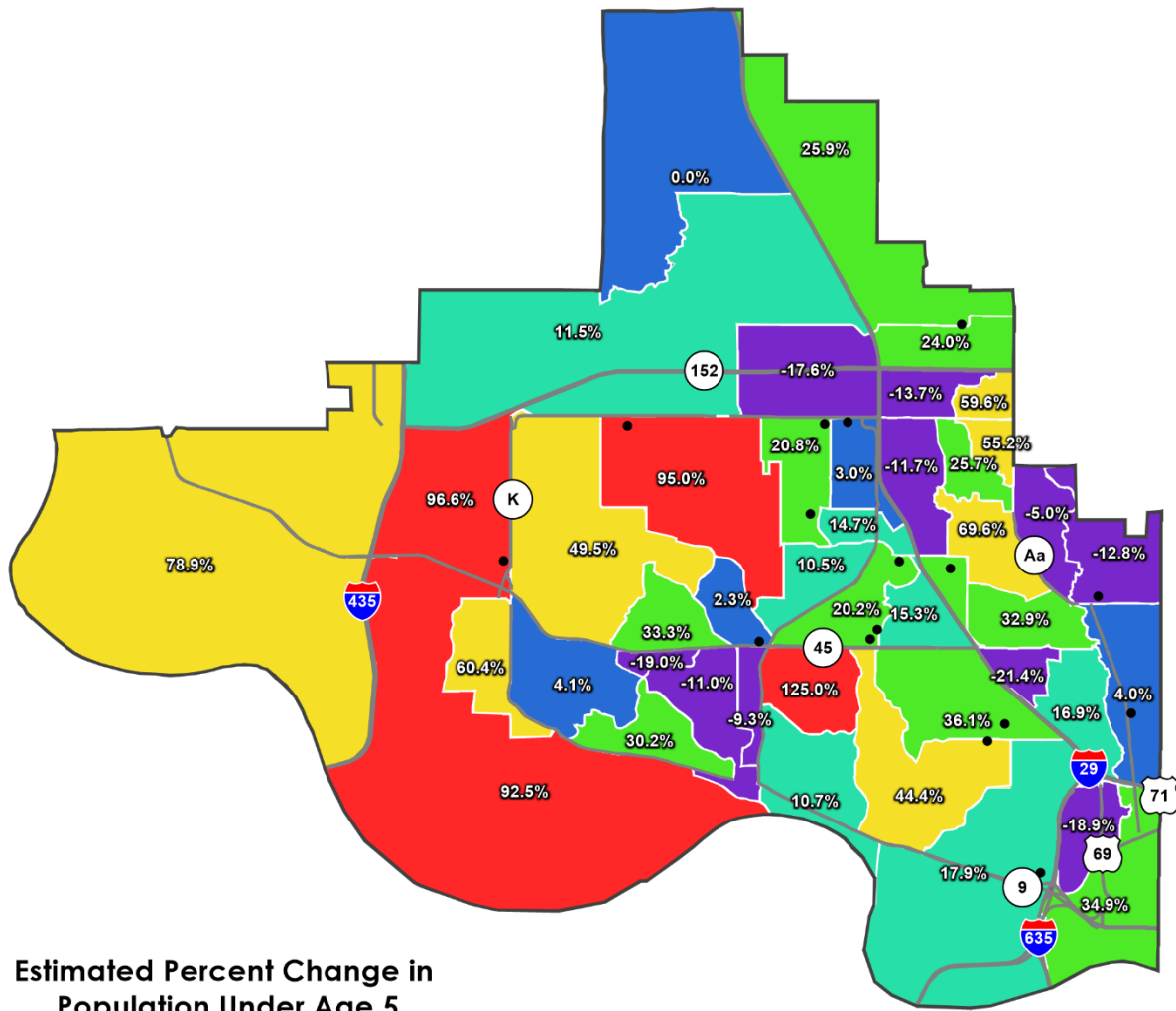
ESTIMATED CHILDREN UNDER THE AGE OF 5



Estimated 2020 Population Under Age 5



ESTIMATED CHANGE IN NUMBER OF CHILDREN UNDER THE AGE OF 5



Estimated Percent Change in Population Under Age 5 from 2020 to 2030

- Schools
- Highways
- School District
- 0.0% and below
- 0.0% to 10.0%
- 10.0% to 20.0%
- 20.0% to 40.0%
- 40.0% to 80.0%
- 80.0 and above

