



Superintendent Update

JULIE NIELSEN, SUPERINTENDENT
SEPT. 23, 2021

A decorative background on the left side of the slide consisting of a grid of colored circles in various colors including yellow, red, blue, brown, and grey, some solid and some hollow.

Fall Referendum

- **Levy for Learning Teams**

- Responsibility to learn more about the district, its finances and the two questions on the Nov. 2 ballot
- Each school team will be responsible for sharing information with their school community and encouraging people to vote
- Utilize a district toolkit which is located online with all of the important campaign information

- **Community and advisory presentations to occur**

- Visit [sowashco.org/vote2021](https://www.sowashco.org/vote2021)

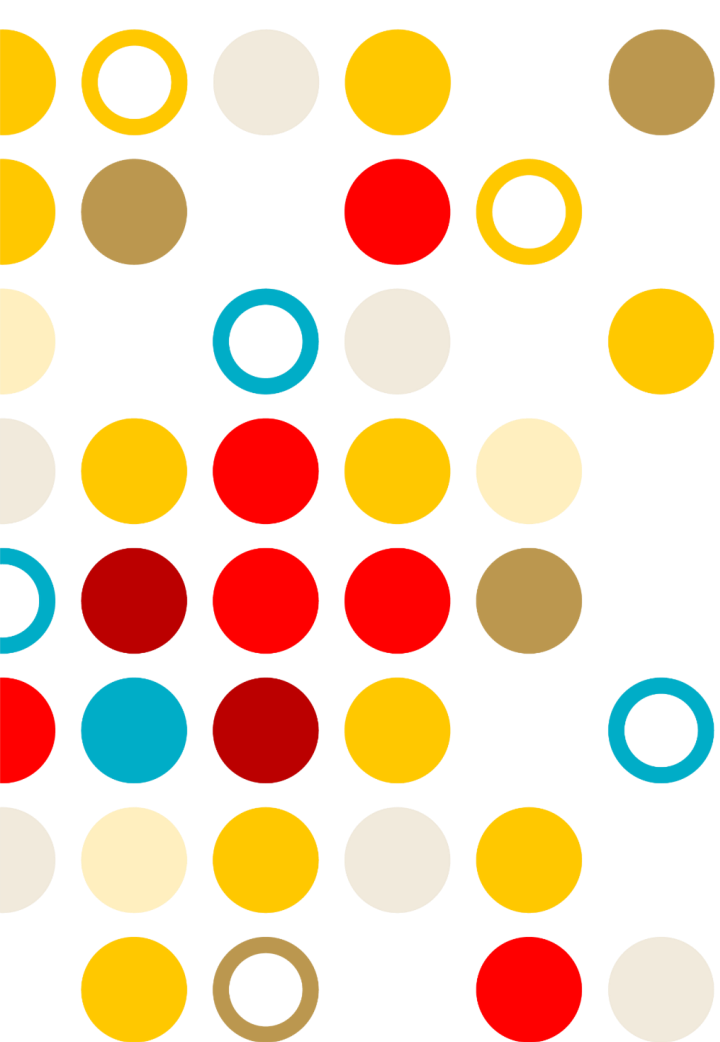
On the Ballot Nov. 2



QUESTION 1 - STABILITY



QUESTION 2 - TECHNOLOGY



A decorative background on the left side of the slide consisting of a grid of colored circles in various colors including yellow, red, blue, brown, and grey, some solid and some hollow.

COVID Update

- COVID Recovery Team - administrators, health and safety staff, Co. Epidemiologist
- Daily tracking by our Health Staff in our schools
- County Case Rates - High Transmission Level
 - 572 Daily Cases
- Current Masking Requirement - Elementary Level
 - Vaccination availability
 - Creation of a decision making matrix to guide masking requirements
- 102 positive cases since the first day of school (9/22/21)
- District Dashboard - Elementary, Middle or High Schools
 - Positive Cases: Since the beginning of the school year by level

When would we require masking for our high schools?



If...

- 2% of the total student population have confirmed positive COVID cases, within a 7 day period; Increase mitigation efforts and masking required for a minimum of 20 days
 - Example: High School with 2,000 students = 40 positive cases in 7 days
- 5% of the total student population is absent with COVID or flu like illness/symptoms on any **ONE** day – Increase mitigation efforts and masking required for a minimum of 20 days
 - Example: High School with 2,000 students = 100 positive or flu like symptoms
- Other

When would we consider Distance Learning?

If...

- 10% percent of the total student population have received confirmation of a positive COVID case in a 7 day period
 - Example: 2,000 students = 200 positive cases
 - Minimum of 20 days of distance learning
- Staff shortages that make it impossible for a school to continue operations (teachers, nutrition services staff, bus drivers)

Distance Learning Preparation

- Should any disruptions to in-person learning occur because of COVID-19, having the flexibility to shift to distance learning will be vital to ensuring continuity in learning for students
- DRAFT elementary and secondary schedules have been created and operational conversations have occurred related to nutrition services, transportation, special education, etc...
- SoWashCo Schools has provisional approval to become online providers for all grades served for the 2021-22 school year

Our continued goal is...

Students in person, 5 days a week!



A decorative graphic on the left side of the slide consisting of a grid of colored circles in various shades of blue, green, yellow, and beige, some solid and some hollow. A single light blue circle is positioned above the title.

School and Community Events

- Attended our Hmong Parent Advisory Social
- Visited classrooms and lunchrooms at our high schools
- Hosted our first District Ambassador Meeting



thanks!