



AMITY REGIONAL HIGH SCHOOL

COLLEGE ADMISSIONS PROFILE 2021 – 2022 | CEEB CODE # 070965
Regional School District #5: Bethany – Orange – Woodbridge



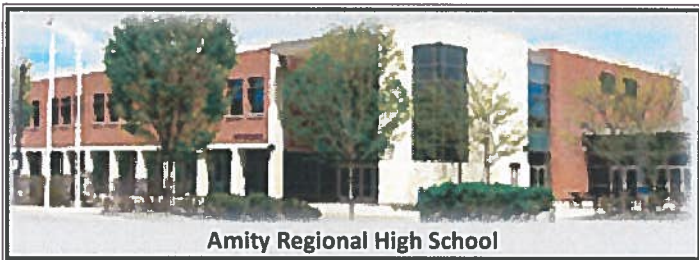
Dr. Jennifer Byars - *Superintendent of Schools*
Anna Mahon - *Principal*
Jill LaPlante - *Director of Counseling*

25 Newton Road
Woodbridge, Connecticut 06525
203-397-4830 – Main office
203-397-4846 – Counseling Office
amityregion5.org

Community

SPANNING 58 SQUARE MILES AND LOCATED 75 miles east of New York City, Amity Regional School District #5 serves the educational needs of Bethany, Orange and Woodbridge, Connecticut for grades 7-12. It consists of one high school, grades 9-12, and two middle schools, grades 7-8. The district is contiguous to New Haven, a major center of higher education, medicine and the arts. Home to many professionals, the average median family income estimate was \$157,610 in 2019*. The vast majority of family dwellings are single-family owner-owned homes. * US Census Data

School



Amity Regional High School

AMITY REGIONAL HIGH SCHOOL IS A COMPREHENSIVE four-year public high school enrolling 1,407 students in grades 9–12. The school opened in 1954 and was rebuilt in the early 1990s. Amity Regional High School was recently re-accredited by the New England Association of Schools and Colleges with superior ratings. The school is a member of the National Association for College Admission Counseling.

In recent years, the school ranked #1 in Connecticut in an annual Newsweek poll and was also named a National Blue Ribbon High School.

Special Programs

- Science Research Program: A four-year honors, application only, program taken in conjunction with a regular science course load.
- Educational Center for The Arts: An off-campus program in New Haven offering courses in dance, instrumental and vocal music, poetry and prose, theater and visual arts. Admission is competitive. Students earn two courses worth of honors credit annually toward graduation.
- University of Connecticut ECE: An opportunity for students to take UConn courses while still in high school.
 - Partnerships with Yale University, Southern CT State University, and Gateway Community College: Students apply to take courses and seminars offered after school, evenings and Saturdays on the college campuses.
- Independent Study: Sophomores, juniors and seniors may apply. After approval, students conduct an in-depth study in an area of interest. Honors credit is awarded.
- International Studies Program: Amity students come together with students from surrounding schools to study a specific international topic.
- Senior Internship Program: Seniors may apply for an intern-

Graduation Requirements

GRADUATION REQUIRES 25 CREDITS, which must include successful completion of four years of English; three years of social studies; four years of math; three years of science; two years of world language; three years of physical education and health; and one year of applied education or fine arts/media. Full-year courses are awarded 1.0 credit, semester courses earn .50 credit. Amity offers a *community service incentive*. Students who complete 100 hours of community service, at least 25 during each high school year, are recognized with a *Community Service Graduation Distinction*.

Advanced Placement Courses: 25 | Honors Courses: 39

ENGLISH

- AP Capstone Research
- AP Capstone Seminar
- AP Language & Composition
- AP Literature & Composition
- LH English II
- LH Humanities
- LH Reading & Writing Poetry
- LH Shakespeare
- LH Philosophy
- LH World Literature
- LH Lit. & Music: *A Reflection of Culture*
- LH Other Voices, Other Rooms: *Literature of the Other America*

MATH

- AP Statistics
- AP Calculus AB
- AP Calculus BC
- AP Computer Science A
- AP Computer Science Principles
- LH Algebra II
- LH Pre-Calculus

SCIENCE

- AP Biology
- AP Physics C
- AP Physics I
- AP Chemistry
- AP Environmental Science
- LH Marine Biology & Oceanography
- LH Human Anatomy & Physiology
- LH Chemistry I
- LH Science Research Year 1
- LH Advanced Science Research

In 2021 Amity administered 720 AP exams to 371 students. 81% scored 3 or better. 51% scored 4 or 5.

SOCIAL STUDIES

- AP US Government & Politics
- AP US History
- AP Psychology
- LH Critical Issues in Foreign & Domestic Politics
- LH Introduction to Sociology
- LH Multi-Cult. Diversity in Amer.
- LH Cultural Geography

WORLD LANGUAGE

- AP Spanish Lang & Culture
- AP Spanish Lit & Culture
- AP French Lang & Culture
- AP Chinese Lang & Culture
- AP Latin
- LH Spanish III
- LH Chinese III & IV
- LH French III
- LH Latin III

THE ARTS

- AP Music Theory
- AP Studio Art: Drawing
- AP Art History
- LH Ceramics & Pottery
- LH Art & Portfolio
- LH Symph Wind Ensemble
- LH Symph Orchestra
- LH Chamber Orchestra
- LH Honors Choir
- LH Educational Center for the Arts
- LH Understanding Film
- LH Documentary & Experimental Film
- LH Broadcast Journalism
- LH Filmmaking I & II
- LH Acting and Directing for Film
- LH Theater II
- LH Theater III

CAREER & TECH ED

- LH Advanced Accounting

ship that occurs in the final month of senior year. Students are placed in work experiences where they receive on-the-job training and field experience in a chosen career field.

- Senior Interest Project (SIP): Seniors may apply to explore, investigate and learn about a topic of personal interest. Projects can be interdisciplinary experiences helping students prepare for college, career and life.

Course Level Descriptions

LH – Honors level provides the most rigorous courses and requires superior scholarship. Some involve preparation for AP exams and are conducted at a pace comparable to college level courses.
L1 – Level one provides a comprehensive, challenging curriculum and includes preparation for some AP exams.

L2 – Level two provides courses that offer a challenging and comprehensive curriculum requiring above average academic ability.

L3 – Level three provides a basic foundation for academic work for post-secondary schools and colleges.

LE – Level electives provides courses in which course objectives and activities are appropriate for all students. These courses receive the same weight in calculating WGPA as a Level 2 course.

Weighted Grade Point Average & Grading System

All courses are included in the weighted and unweighted GPA calculations except any pass/fail or transfer courses. The scale below is used to calculate a WGPA:

Grade	GPA	LH	L1	L2	L3
A+	4.3	5.6	5.16	4.73	4.3
A	4.0	5.3	4.86	4.43	4.0
A-	3.7	5.0	4.56	4.13	3.7
B+	3.3	4.6	4.16	3.73	3.3
B	3.0	4.3	3.86	3.43	3.0
B-	2.7	4.0	3.56	3.13	2.7
C+	2.3	3.6	3.16	2.73	2.3
C	2.0	3.3	2.86	2.43	2.0
C-	1.7	3.0	2.56	2.13	1.7
D+	1.3	2.6	2.16	1.73	1.3
D	1.0	2.3	1.86	1.43	1.0
D-	0.7	2.0	1.56	1.13	0.7
F	0.0	0.0	0.0	0.0	0.0

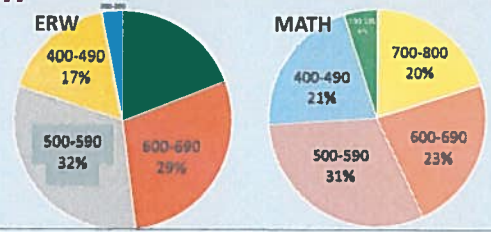
CLASS OF 2021	
Graduates	350
4-Year Schools	303
2-Year Schools	17
Employment/Apprenticeship	19
Gap	7
Military	3
Other/unknown	1

Testing Information

SAT Reasoning Summary
 Mean Scores - 291 tested
 • Evidence-Based Reading & Writing: 589
 • Math: 583

ACT Summary
 Mean Scores - 123 tested
 • English: 28.2
 • Math: 26.7
 • Reading: 28.1
 • Science: 26.1
 • Composite: 27.4

SAT Percent Distribution



NATIONAL MERIT SCHOLARSHIP PROGRAM
 10 National semi-finalists
 9 National finalists
 26 National commended students

A ATHLETICS A

Amity High School has a rich history of outstanding athletics capturing 61 state titles offering 32 varsity level programs. Some achievements for 2021 were:

★ 2020 CIAC Michaels Achievement Cup - "Class Act School" ★

- **SCC Champions (3) – Girls:** Volleyball, Tennis **Boys:** Lacrosse
 - **SCC Runners-Up (5) – Girls:** Cross Country, Field Hockey, Lacrosse, Softball **Boys:** Volleyball
 - **SCC Divisional Champions (7) – Girls:** Cross Country, Volleyball, Lacrosse, Tennis, Softball **Boys:** Lacrosse, Baseball
 - **SCC Players of the Year (10): Boys:** Cross Country, Lacrosse, Volleyball, Golf. **Girls:** Cross Country, Field Hockey, Soccer, Tennis, Lacrosse, Volleyball
 - **SCC Coaches of the Year (5) – Girls:** Cross Country, Volleyball, Golf. **Boys:** Lacrosse, Golf
- Note: The Covid-19 pandemic disrupted these athletic programs:**
- No fall or winter state championships were played
 - There were no football or wrestling competitions.

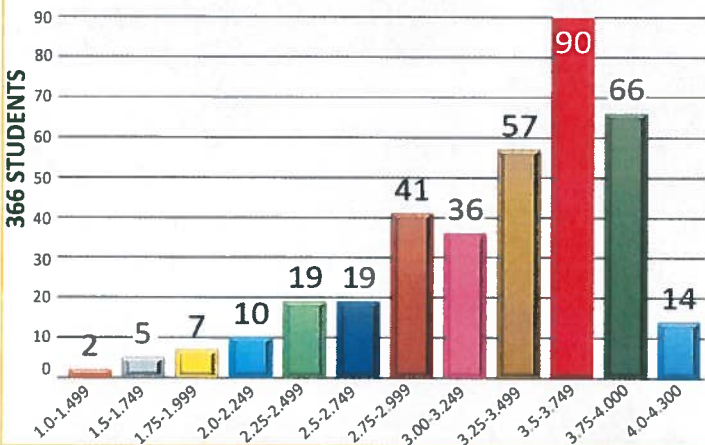


Class of 2022 Class Rank and GPA

Individual class rank is not reported. A weighted Grade Point Average and an unweighted Grade Point Average are reported for the 366 seniors who have attended Amity High School for three full years. (See table at left and charts below.)

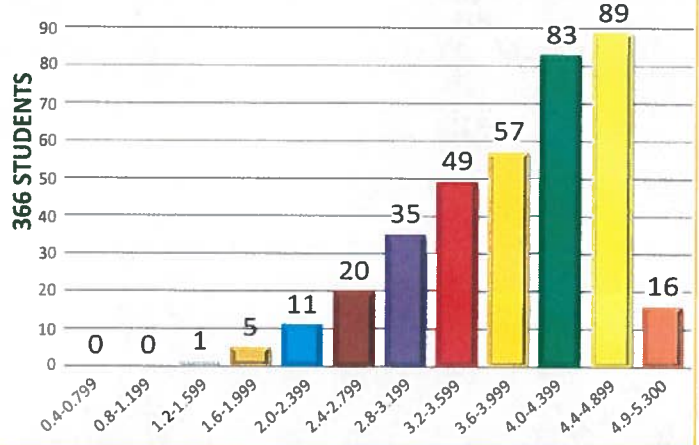
Class of 2022 Grade Point Averages

Highest GPA: 4.188 | Lowest GPA: 1.365 | Average GPA: 3.294



Class of 2022 Weighted Grade Point Averages

Highest WGPA: 5.255 | Lowest WGPA: 1.536 | Average WGPA: 3.889



School Counselors

- Email Format: firstname.lastname@amityregion5.org
- Marian Boyns
 - Courtney Campbell
 - Lisa Conley
 - Gerilyn Ferguson
 - Lynn Cocco — College & Career Counselor
 - John Mezzo
 - Ashley Mozealous
 - Alison Staak
 - Karen Waterman

Disclosure Statement

Amity Regional High School does not disclose confidential disciplinary records to post secondary institutions except as it may be required by law.

COLLEGES ATTENDED BY AMITY REGIONAL HIGH SCHOOL CLASS OF 2021

Albertus Magnus College	Louisiana State University	The University of Tampa
American University	Marist College	Trinity College
Anna Maria College	Mars Hill University	Tufts University
Arizona State University-Tempe	Marywood University	Tulane University of Louisiana
Barnard College	Massachusetts College of Pharmacy and Health Sciences	Tunxis Community College
Bentley University	Merrimack College	Union College
Boston University	Miami University-Oxford	United States Air Force Academy
Bowdoin College	Morgan State University	United States Military Academy
Brown University	Morris Brown College	University of Alabama at Birmingham
Bryant University	Mount Holyoke College	University of Bridgeport
Carnegie Mellon University	Muhlenberg College	University of British Columbia
Case Western Reserve University	Naugatuck Valley Community College	University of California-Davis
Castleton University	New England Institute of Technology	University of Colorado Boulder
Central Connecticut State University	New York University	University of Connecticut
Clark University	NHTI-Concord's Community College	University of Hartford
Coastal Carolina University	North Carolina State University at Raleigh	University of Maine
Colgate University	Northeastern University	University of Maine at Farmington
Cornell University	Norwich University	University of Maryland-College Park
Culinary Institute of America	Pace University, New York City Campus	University of Massachusetts-Amherst
Curry College	Paul Smiths College of Arts and Science	University of Massachusetts-Dartmouth
Dartmouth College	Pennsylvania State University-Main Campus	University of Miami
Drexel University	Plymouth State University	University of Michigan-Ann Arbor
Eastern Connecticut State University	Providence College	University of Missouri-Columbia
Elon University	Quinnipiac University	University of New Hampshire-Main Campus
Emory University	Rensselaer Polytechnic Institute	University of New Haven
Endicott College	Rhodes College	University of North Carolina Wilmington
Fairfield University	Rice University	University of Pittsburgh-Pittsburgh Campus
Gateway Community College	Roger Williams University	University of Puerto Rico, RÃfÃo Piedras
George Mason University	Sacred Heart University	University of Rhode Island
Georgia Institute of Technology-Main Campus	Saint Leo University	University of Rochester
Gettysburg College	Salem State University	University of Scranton
Gordon College	Salve Regina University	University of South Carolina-Columbia
High Point University	San Diego State University	University of Southern California
Hofstra University	Siena College	University of St Andrews
Housatonic Community College	Southeastern University	University of Vermont
Husson University	Southern Connecticut State University	University of Virginia-Main Campus
Indiana University-Bloomington	Southern Methodist University	University of Wisconsin-Madison
Iona College	Southern New Hampshire University	Vanderbilt University
Keene State College	Springfield College	Wake Forest University
Lafayette College	St Bonaventure University	Washington University in St Louis
Landmark College	St. John's University-New York	Wesleyan University
Lasell University	State University of New York at New Paltz	Western Connecticut State University
Lehigh University	Susquehanna University	Wheaton College
Lewis University	Syracuse University	Worcester Polytechnic Institute
Liberty University	The University of Arizona	Yale University