

Woodland School



2021-22 COVID-19 Policies and Procedures

Overview



Table of Contents

- 2 Overview
- 3 Guiding Principles
- 4 Minimizing the Spread of COVID-19
- 6 Confirmed or Suspected Case of COVID-19
- 8 Visitor Policy
- 9 Campus
- 11 Technology, Extended Day, House Cup, Electives, Athletics, Hot Lunch, Outdoor Ed, Service Learning
- 12 Frequently Asked Questions
- 16 Resources

We believe all members of the Woodland community have a shared responsibility to care for ourselves and others. In order to prevent the spread of COVID-19, families, staff, and faculty partner with us by monitoring themselves and their family members for signs of illness at home before arriving on Woodland's campus. This includes following the California Department of Public Health's recommendations; washing your hands frequently and wearing a face covering when you are indoors, regardless of vaccination status. As a result of your diligence over the past 12 months, Woodland did not have any transmission of COVID-19 on campus. Please continue following all policies, procedures and recommendations. We encourage all eligible people your child comes in contact with on a regular basis to receive the COVID-19 vaccine once they are eligible.

This document contains our plan to welcome students to campus during the 2021-2022 school year. Please review it carefully, as it shares policies and procedures that prioritize our community's health and safety.

During the 2021-22 school year, Woodland will conform to all applicable laws and Executive Orders and be guided by recommendations and expectations from the Center for Disease Control (CDC), State of California, the San Mateo County Health Department, and California Child Care Licensing, as applicable. The health and safety of our students and employees will continue to be a focal point. This will include staggered arrival times, daily health screenings, required face coverings for all people on campus, and hand hygiene practices. Faculty and staff will emphasize social emotional learning and team building as we come together as a school community and develop a strong sense of belonging for all students.

Woodland will offer in-person learning five days a week for all students. Should an individual classroom, grade or division need to isolate, we will transition that group to distance learning within 2 school days. Should a student contract COVID-19, we will work individually with that family to provide learning during the quarantine period.

No students will be permitted to begin the school year without all required paperwork and current medical forms, including all updated immunizations.



Considerations for Woodland's COVID-19 Policies and Procedures are grounded in three guiding principles.

Health and Safety

Woodland's highest priority is the health and well-being of the community, and we recognize that we have an obligation to support the health of the broader community. We are committed to doing our very best to mitigate the risks, as outlined in this document, but we cannot guarantee that community members will not be exposed to COVID-19.

Social and Emotional Well-being

Students have a broad range of experiences they bring to the classroom each day. Pedagogy and classroom practices will provide greater attention to student mental health and well-being to build resilience and cope with the lingering stress or anxiety students may be experiencing based on the pandemic context. Social emotional learning will continue to be thoughtfully woven into all aspects of the student experience.

Academic Excellence

We believe that children achieve their highest potential when they are in a challenging academic environment that allows them to be active, engaged learners. A continuous, in-person educational experience is vitally important to achieving this.

Woodland's COVID-19 policies and procedures must remain flexible and be able to adapt to circumstances beyond our control. They are subject to change based upon further guidance, evolving public health recommendations.

Health and Safety

Minimizing the Spread of COVID-19



We are following state and local guidelines which provide direction on how to operate a school while mitigating the potential risk of COVID-19 transmission. We must recognize that there is no such thing as **zero risk** and we cannot guarantee a zero transmission strategy. Our goal is to mitigate risk and reduce harm. A single control strategy alone cannot prevent the transmission of a disease. But, multiple strategies together layer to create a greater chance of protection and we will take steps to limit transmission chains by using our abundant outdoor space, holding classes in our outdoor classrooms, limiting the number of people on campus, and continuing our health related protocols. Face coverings will be worn at all times on campus unless an individual is actively eating or drinking.

Students will maintain stable groups at all times when indoors. When outdoors during recess, students will be allowed to mix with other stable groups in their division. The exception will be middle school math and electives, where stable groups will mix for math class and electives.

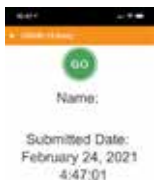
It is important to keep students at home if there are any signs of illness. Please let the school know if you, your child, or another member of your household tests positive for COVID-19, experiences symptoms of COVID-19, or is exposed to someone who is positive or symptomatic for COVID-19. The CDC's list of COVID-19 symptoms, as well as additional guidance for minimizing the spread of COVID-19 can be reviewed at <https://www.cdc.gov/coronavirus/2019-ncov/symptoms-testing/symptoms.html>. This link also includes guidance for vaccinated people.

All visitors to Woodland will be required to present their full vaccination card before entering campus.



Travel

Families should avoid travel outside the United States for the two weeks prior to the start of school, non-vaccinated individuals should quarantine upon returning to the United States for 7 days with a negative test or 10 days without a test, and monitor symptoms. Unless all household members are vaccinated, please avoid international travel during the school year. The school has the discretion to determine whether a student should be quarantined for a period of time upon returning from travel. Currently there are no limitations on domestic travel. However, we highly encourage you to monitor vaccine rates and COVID-19 cases for any location you plan to visit and avoid areas of elevated COVID-19 cases.



Health Screening

Each student is required to submit a daily health screening through the Magnus App prior to arrival at school. Parents will show the green go icon before students exit the car.



Hand Hygiene

We know that frequent hand washing is critical to eliminate germs. In addition to the existing sinks throughout campus, 10 portable sinks are available in various high traffic areas. We have hand sanitizer available at all entrances and in every classroom space. Students will routinely cleanse their hands at the start and end of each day, and before and after snack, lunch, recess, and Physical Education. Students will also sanitize hands before and after using shared supplies.



Health and Safety

Minimizing the Spread of COVID-19

Face Coverings



All students, staff and faculty will be required to wear face coverings while at school. **Parents should send their children to school each day with appropriate face coverings.** (The school has multiple options for face coverings should one be needed throughout the day.) We request keeping an extra face covering in your child's backpack. Bandanas and gaiters are not adequate face coverings while on campus.

Personal Protective Equipment



In addition to face coverings we have installed plexiglass barriers available for all teachers who request them, as well as plexiglass barriers at lunch tables.

COVID-19 Testing



We believe that COVID-19 testing is important to protect our community. Our COVID-19 testing goals are as follows:

1. Test all employees when they initially return to campus and test all employees once a week. Test results are usually returned within 48 hours.
2. All students will provide a negative test result before they are allowed to begin the school year. Free testing is available through Curative. Testing should take place between Tuesday, August 10 and Friday, August 13. Test results must be uploaded to Magnus by noon on Tuesday, August 17. Students who do not provide a negative test result will not be allowed to start school on August 18.
3. During the school year, all students and employees will be tested weekly. Woodland is contracting with Agileforce for this service. Test results are usually returned within 48 hours.

Please note, because testing methods, efficacy, and supplies are constantly evolving, our plans for testing are also likely to evolve.

Vaccination



Woodland School recommends that all persons who are eligible receive the COVID-19 vaccine at the first opportunity available.

What Happens If?

Confirmed or Suspected Case of COVID-19



Our protocol is based on the latest guidance from the Center for Disease Control, California Department of Public Health, San Mateo Health and San Mateo County Office of Education. These guidelines will continue to evolve with the latest health and safety information; we will update as needed.

We have designated Jennifer Warren, Head of School, to be our COVID-19 liaison with county health officials. She will schedule COVID testing, oversee the daily health screening process, and support contact tracing and documentation with San Mateo County Health. She will be the point of contact at Woodland for San Mateo County Health regarding any COVID-19 information.

If a student, faculty or staff member tests positive for COVID-19, we will send notification letters promptly via email to the appropriate distribution lists of students and employees. Individuals will be notified of possible exposure based on the following scenarios:

- 1) someone (vaccinated or non-vaccinated) at Woodland is a confirmed case, but not in the same stable group;
- 2) someone (vaccinated or non-vaccinated) at Woodland is a confirmed case in the same stable group

Woodland's COVID-19 tracker, available in our Parent Portal, will be updated in real time, should a student or employee contract COVID-19.

COVID-19 Reporting Requirements

IF an employee or student has a positive test result:

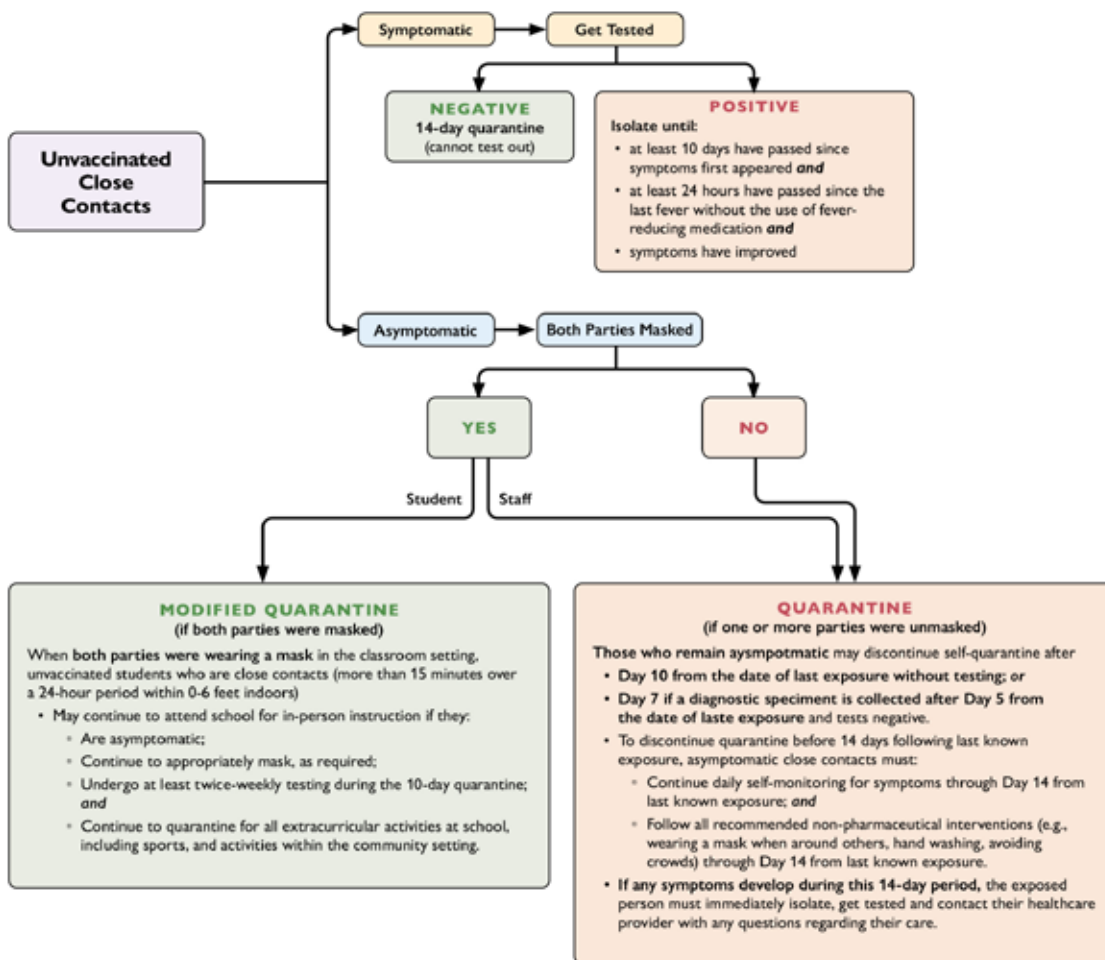
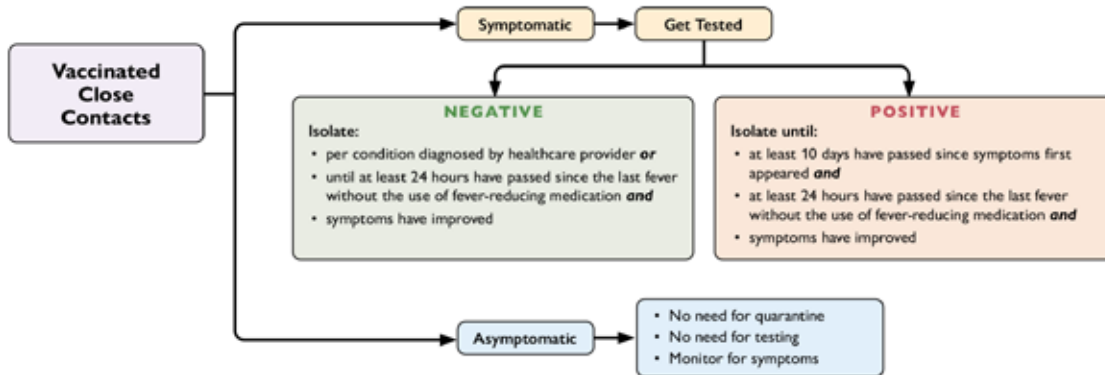
- ◆ Require that parents/guardians and staff notify school administration immediately if the student or staff tested positive for COVID-19 or if one of their household members or non-household close contacts tested positive for COVID-19.
- ◆ Upon receiving notification that staff or a student has tested positive for COVID-19 or been in close contact with a COVID-19 case, take actions as required on page 7 of this document.

For confirmed COVID-19 Case(s):

- ◆ School administrators will notify San Mateo Health immediately of any positive COVID-19 case.
- ◆ Notify all staff and families in the school community of any positive COVID-19 case while maintaining confidentiality as required by state and federal laws.
- ◆ Confirm all students and staff within the same stable classroom group as the confirmed COVID-19 case were wearing face coverings at all times except when actively eating and drinking. **If so, non-vaccinated students may continue to attend school as long as they are asymptomatic, continue to wear face coverings, undergo twice-weekly testing for 10 days AND quarantine for all extracurricular activities inside and outside of school,** including extended day, athletics and enrichment classes. Symptomatic non-vaccinated students must get a COVID-19 test and quarantine for 14 days with a negative test. With a positive test, students must isolate for at least 10 days, be fever free for 24 hours post using fever reducing medication, AND have improved symptoms. Please see flow chart on page 7.
- ◆ For middle school students in which stable groups have NOT been maintained due to student schedules: Utilize class seating rosters and consultation with teachers/staff to identify close contacts to the confirmed COVID-19 case in all classrooms and on-campus activities.
- ◆ In a school setting, a close contact is someone who has been within 0-6 feet for more than 15 minutes over a 24-hour period indoors.
- ◆ Provide information regarding close contacts to San Mateo Health.
- ◆ Vaccinated individuals who are close contacts to a positive case do not need to quarantine.
- ◆ Individuals who were diagnosed with COVID-19 in the three months prior to the close contact do not need to quarantine.



COVID-19 Exposure at School



Health and Safety

Visitor Policy and Cleaning Procedures



Visitor Policy

Parents and Guardians: Fully vaccinated visitors will be allowed on campus for special events only. Visitors will check in at the office using VISITU, show their proof of vaccination, attest that they are free of COVID-19 symptoms, and receive their visitor badge before going to their designated place on campus. Face coverings are required at all times while on campus unless actively eating or drinking.

Vendors: All service providers will wear face coverings and practice physical distancing while on school grounds. When entering the main office, vendors will be asked to sanitize their hands. Whenever possible, services will be provided when students are not on campus.

Deliveries: Whenever possible, deliveries (USPS, UPS, etc.) will be left outside campus buildings. If it is necessary to enter the main office, all visitors will wear face coverings while on school grounds. When entering the main office, visitors will be asked to sanitize their hands.

Cleaning Procedures

Personal Hygiene: Students, faculty, and staff will follow a regular schedule of handwashing or use of hand sanitizer throughout the day. Hand sanitizer dispensers will be available in every classroom and in other campus locations.

High-Touch Surfaces: High touch surfaces such as tables, door knobs, countertops, handles, desks, keyboards, and sink faucets will be cleaned each evening by our contracted cleaning service.

Building Amenities: Disposable wipes or similar acceptable cleaners will be available in classrooms and other shared facilities (e.g. copy machines) for wiping down surfaces.

Bathrooms: Bathrooms will be fully cleaned each evening by our contracted cleaning service.

Physical Education: Students will clean hands before and after using Physical Education equipment.

Classroom Materials: Students will clean hands before and after using shared classroom materials, such as math manipulatives.



Health and Safety

Classrooms, schedules and hallways



All classroom spaces have MERV-13 air filters and we run the ventilation system at a high frequency, increasing regular air exchange. Classroom windows will remain open whenever possible. In addition, HEPA-filter air purifying units are in all classrooms and offices to further enhance air circulation and filtration.

Students and teachers will be respectful of their space and mindful moving through the classroom.

<p>Using Outdoor Spaces Woodland will continue to hold classes in our three outdoor classrooms located on the middle school blacktop. We are also installing sun shades over the amphitheater and gym patio stairs providing additional outdoor classroom space.</p>	<p>Playground Schedule We have a playground schedule that limits the number of students in any particular play area.</p>
---	---

Hallways
The hallways around campus are marked in most cases as one-way paths to avoid passing near others on narrow sidewalks.

Students will use sinks in classrooms or outdoor spaces, washing hands regularly.

We have contracted with an outside vendor to complete daily cleaning of all campus spaces. Cleaning practices will be compliant with CDC recommendations, including the types of cleaning products used and the frequency of cleaning.

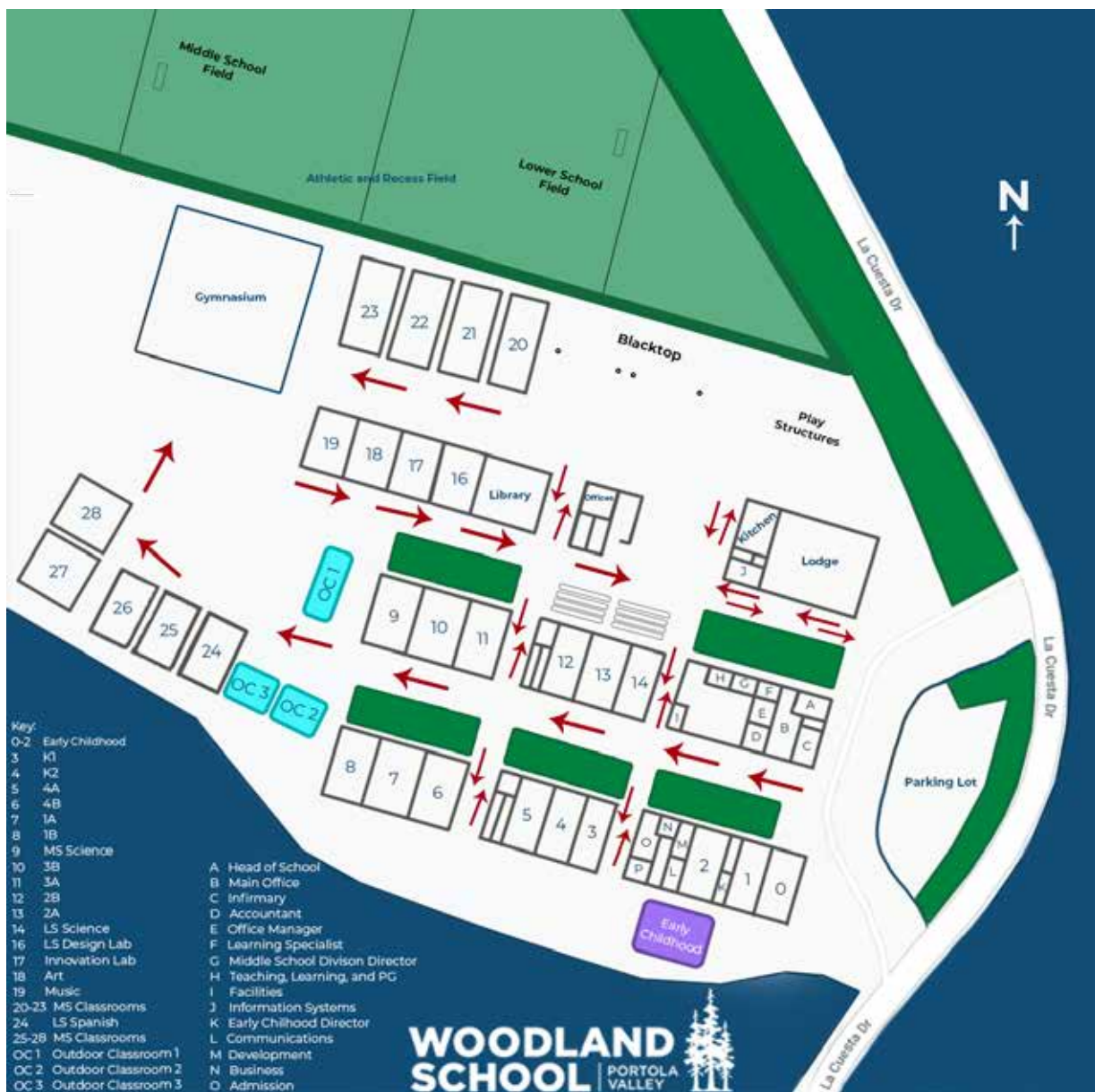


Health and Safety

Woodland Campus



With over 10 acres of space, we have thoughtfully reviewed each classroom, office, outdoor, and multipurpose area on campus. Movement about campus will follow a flow defined by the guided arrows on the map; these routines will be supported in the early weeks of our school year with visual aids, social modeling, and in-class instruction/rehearsal with homeroom teachers and advisors.





What About?

Technology

Should quarantine be necessary, Woodland is committed to providing technology for all students to complete coursework during distance learning. iPads and headphones are available for loan for students in Kindergarten through 3rd grade. Chromebooks and headphones are available for loan for 4th grade students. Families in need of a Chromebook or hotspot should contact Amy Shek, Director of Information Systems, for assistance.

House Cup

The spirit of our houses (Cypress, Maple, Oak, and Pine) will be celebrated in many ways as we maintain the wellness of our community. All House activities will take place outside and by division only.

Hot Lunch

Woodland has contracted with School Foodies to offer a hot lunch option for families. School Foodies follows all COVID-19 guidelines and procedures in food preparation and delivery. Please send your child to school each day with a filled water bottle.

Middle School Electives

Middle School students will be offered electives/clubs. Electives/clubs be taking place two days per week.

Extended Day

Woodland will offer Extended Day after school care beginning on the first day of school, Wednesday, August 18. To provide necessary staffing, parents will be required to commit for the full year for a 5:00pm pick-up time (Hourly rates range from \$7.41 - \$8.04/hour depending on division dismissal times) or a 6:00pm pick-up time (Hourly rates range from \$8.09 - \$9.13/hour depending on division dismissal times). Payment can be made at the beginning of the school year or monthly. The hourly rate when committing for the full year is \$7.50/hour and the drop in rate is \$15.00/hour. Morning drop off will begin at 7:45am for Lower School students and 8:00am for Middle School students and 8:15am for Early Childhood students. Families with students in more than one division may drop off at anytime. Please note that the school day for Lower School and Middle School students begins at 8:15am and childcare before school is complimentary.

PE, Recess, and Athletics

PE and recess will take place outdoors, with all students wearing face coverings. Grades four through eighth will have the opportunity to participate in athletics. Should the WBAL pause activities, Woodland will conduct intramurals. Students participating in athletics will be COVID-19 tested weekly.

Outdoor Education and Service Learning

Woodland is planning to hold outdoor education the week of October 4th, 2021 and the eighth grade service learning trip the week of April 4th, 2022. Woodland is in contact with vendors to ensure COVID-19 guidelines will be adhered to, keeping the health and safety of our students at the forefront.

Frequently Asked Questions



How will the decision be made to transition from on-campus instruction to distance learning?

Woodland will hold in-person instruction five days a week unless an outbreak occurs on campus and guidance from the San Mateo Health requires Woodland to close school and move to distance learning. We will follow San Mateo County Health's guidance and advice to help the school determine when a classroom, stable group, or the entire school needs to be closed.

What is the travel policy?

Families should avoid travel outside the United States for the two weeks prior to the start of school, non-vaccinated individuals should quarantine upon returning to the United States for 7 days with a negative test or 10 days without a test, and monitor symptoms. Unless all household members are vaccinated, please avoid international travel during the school year. The school has the discretion to determine whether a student should be quarantined for a period of time upon returning from travel. Currently there are no limitations on domestic travel. However, we highly encourage you to monitor vaccine rates and COVID-19 cases for any location you plan to visit and avoid areas of elevated COVID-19 cases. CDC and CDPH travel recommendations:

Domestic Travel	Not Vaccinated	Fully Vaccinated
Get tested 1-3 days before travel	✓	
Get tested 3-5 days after travel and self-quarantine for 7 days. Self-quarantine for 10 days if you don't get tested.	✓	
Self-monitor for symptoms	✓	✓
Wear a mask and take other precautions during travel	✓	✓
International Travel	Not Vaccinated	Fully Vaccinated
Get tested 1-3 days before traveling out of the US	✓	
Mandatory test required before flying to US	✓	✓
Get tested 3-5 days after travel	✓	✓
Self-quarantine after travel for 7 days with a negative test or 10 days without test	✓	
Self-monitor for symptoms	✓	✓
Wear a mask and take other precautions during travel	✓	✓

Will Extended Day be available?

Yes! Thank you for completing our survey indicating your need for after school care. It was abundantly clear that offering after school care is a necessity for families.

Are students required to wear face coverings?

All students are required to wear face coverings except when actively eating or drinking.

What kind of face covering should my child wear?

We recommend a face covering that is comfortable for your child to wear for long periods of time. Acceptable face coverings are: reusable cloth face coverings, disposable medical masks, or face coverings with replaceable filters. Bandanas and gaiters are not allowed. Face coverings should not have distracting images or text. Children should arrive at school each day with two face coverings; one in case a covering is lost, damaged or soiled. As with all personal items, it is recommended that your child's name be tagged on the face covering.



Frequently Asked Questions

Are adults required to wear face coverings?

Yes, all adults on campus are required to wear face coverings except when actively eating or drinking.

Will visitors be allowed on campus?

Parents or guardians who visit campus must present their full vaccination card and sign in at the main office via VISITU before entering campus. There will be specific times parents will be allowed on campus for special events and classroom presentations. If you would like to visit campus outside of these specific times, please contact the office prior to your arrival.

What times are drop off and pick up?

In order to fulfill the daily required health check, we will have scheduled staggered arrival times. In order to decrease interaction between divisions, we will also have staggered dismissal times. Parents and guardians will not be allowed to exit their vehicles, and all adults and children over the age of 2 are encouraged to wear a mask during drop off and pick up. Please be flexible, on time, and adhere to our traffic procedures to ensure an orderly and safe arrival and dismissal. We advise any employees and families who carpool to have windows open to maximize outdoor air circulation, and everyone in the vehicle wear a face covering.

Campus will be open at 7:45am each morning to provide a safe place for students who arrive to campus before the start of the school day. When students arrive on campus, they will follow a designated path to Early Childhood, the lower school blacktop or middle school blacktop.

Grade	Arrival	M-Th Dismissal	Friday Dismissal
Early Childhood	8:15am-8:30am	3:30pm-3:45pm	2:30pm-2:45pm
Kindergarten	7:45am-8:00am	3:00pm-3:15pm	2:00pm-2:15pm
1st-4th Grade	7:45am-8:00am	3:05pm-3:15pm	2:05pm-2:15pm
5th-8th Grade	8:00am-8:15am	3:15pm-3:30pm	2:15pm-2:30pm

What is the daily screening process for students and employees?

All students will complete health screening questions through the Magnus app and employees will complete health screening questions through VISITU each morning. It is important to keep students at home if there are any signs of illness. Please let the school know if you, your child, or another member of your household tests positive for COVID-19, experiences symptoms of COVID-19, or is exposed to someone who is positive or symptomatic for COVID-19. The CDC's list of COVID-19 symptoms, as well as additional guidance for minimizing the spread of COVID-19 can be reviewed at <https://www.cdc.gov/coronavirus/2019-ncov/symptoms-testing/symptoms.html>.

What about the library?

Students will be able to access the library in stable groups, with only one stable group in the library at a time. Parents and students will continue to have access to checking out library books.

Will students go on field trips?

Field trips will be assessed on a individual basis. If health and safety guidelines can be adhered to, students will go on field trips.

Frequently Asked Questions



Who will be contacted when a student or employee reports a COVID-19 case?

If a student or employee reports a COVID-19 case, local health officials will be notified, a notification will be sent to the community, all close contacts will be notified, and our COVID-19 dashboard will be updated. If a student, faculty or staff member tests positive for COVID-19, we will send notification letters promptly via email to the appropriate distribution lists of students and employees. Individuals will be notified of possible exposure based on the following scenarios:

- 1) someone (vaccinated or non-vaccinated) at Woodland is a confirmed case, but not in the same stable group;
- 2) someone (vaccinated or non-vaccinated) at Woodland is a confirmed case in the same stable group.

Woodland will adhere to privacy regulations, maintaining student and employee confidentiality.

Will hot lunch be available?

Yes. We know students look forward hot lunch and we have contracted with School Foodies to offer a hot lunch option for families. School Foodies follows all COVID-19 guidelines and procedures in food preparation and delivery. Please send your child to school each day with a filled water bottle.

In order to optimize safety and mitigate the risk during lunch when students will not be wearing masks, students will eat outside. Students will eat under the overhangs during rainy weather.

Will Middle School students participate in Outdoor Ed?

Yes. Middle School students will participate in Outdoor Ed. We are in close contact with vendors to ensure health and safety guidelines are in place which adhere to or surpass our guidelines.

Will athletics be available?

Yes. Woodland's 4th-8th grade students may participate in WBAL athletics. Should the WBAL pause competition between schools, Woodland will hold intramurals. Students participating in athletics and competing against other schools will be tested weekly for COVID-19 regardless of vaccination status.

Which technology platforms will Woodland use should distance learning be necessary?

Should we need to quarantine a classroom or a division, students in Kindergarten through Grade 3 will use Seesaw and students in Grades 4-8 will use Schoology.

What is going to happen to our Woodland Traditions (House Induction, Games, etc.)?

Although we will not be able to join together in large groups for these special occasions, tremendous efforts will be made to continue the traditions outside by division.

What will assembly look like this year?

Assembly will remain an integral element and honored tradition. Assembly will take place outdoors by division and will continue to serve as an opportunity to share announcements and spotlight the learning endeavors of our students, along with celebrating their demonstration of Woodland's virtues.

What happens if my child is ill?

Should your child experience any COVID-19 symptoms, please have your child tested for COVID-19. Students will not be allowed to return to school without a negative COVID-19 test and symptoms subside for a full 48 hours without fever reducing medication.



Frequently Asked Questions

Our family plans to travel during school breaks. Will we be required to quarantine before returning to school?

Woodland is following the CDC recommendations and requirements as suggested by San Mateo Health. Please see the chart below. Woodland discourages international travel and will not provide distance learning for non-vaccinated students while they complete their self-quarantine.

Domestic Travel	Not Vaccinated	Fully Vaccinated
Get tested 1-3 days before travel	✓	
Get tested 3-5 days after travel and self-quarantine for 7 days. Self-quarantine for 10 days if you don't get tested.	✓	
Self-monitor for symptoms	✓	✓
Wear a mask and take other precautions during travel	✓	✓
International Travel	Not Vaccinated	Fully Vaccinated
Get tested 1-3 days before traveling out of the US	✓	
Mandatory test required before flying to US	✓	✓
Get tested 3-5 days after travel	✓	✓
Self-quarantine after travel for 7 days with a negative test or 10 days without test	✓	
Self-monitor for symptoms	✓	✓
Wear a mask and take other precautions during travel	✓	✓

Early Childhood FAQs

What processes are in place to ensure toys are safe and germ-free?

Classroom materials and high touch surfaces, such as tables and chairs, are cleaned daily. Napping mats are sanitized after each rest time. We have procured products that are EPA-approved list "N" for use against COVID-19 and are safe for childcare settings.

Does my early childhood student need to wear a mask?

Yes. Early childhood children will wear masks at all times except when actively eating, drinking or during rest time.

Will nap/rest time still be offered daily?

Yes.

Is my child allowed to bring toys from home to school?

We ask that all personal items, including toys, remain at home.

Will we have Parent Teacher Conferences?

Yes! Two times a year, we look forward to sharing detailed reports on your child's progress. Twice a year, you will have an opportunity to engage in formal parent teacher conferences to review your child's growth and discuss activities to support learning at home.

Someone in my home has contracted COVID-19. With whom do I share this information?

Please report any COVID-19 exposures your child may have had to the Main Office and the Director of Early Childhood Education.

Frequently Asked Questions



What should I do if my early childhood student is ill?

Should your child experience any COVID-19 symptoms, please have your child tested for COVID-19. Students will not be allowed to return to school without a negative COVID-19 test and symptoms subside for a full 48 hours without fever reducing medication.

What happens if my early childhood student becomes ill at school?

Students who are not feeling well or appear ill while at school will be brought to our office, and we will call you immediately. Children must be picked up by a parent or guardian within 1 hour of being contacted.

My child has a birthday during the school year. May we celebrate in class?

At this time, we are unable to serve birthday treats to your child's class. Instead, we encourage you to bring a birthday book to donate to the classroom library.

What are the drop off and pick up procedures for early childhood students?

Drop Off

When you enter the campus parking lot, please pull up to the farthest available open spot by the side gate. Please complete the check-in and then show your Green Go Icon from the Magnus App.

Your child will be checked in beside the gate. You may assist your child in exiting the car. His/her temperature will be checked and then an ECE team member will escort them from the gate to their classroom.

Pick Up

When you enter the campus parking lot, once again, please pull up to the farthest available open spot by the side gate. Once parked at the curb, a staff member will identify your child by the placard on your windshield and will radio to your child's classroom. A member of your child's teaching team will escort your child to the gate. Before departing, please remember to sign your child out using the ProCare App.

For your safety, and the safety of our faculty, we are unable to remove your child from your car or place your child in their car seat.

We encourage you to allot extra time to complete the drop off and pick up processes, especially during the first few weeks of school.

References

American Academy of Pediatrics
California Childcare Licensing
Center for Disease Control
County of Santa Clara Public Health Department
California Department of Public Health
San Mateo Health
San Mateo County Office of Education
State of California Guidelines