

PSYCHOLOGY



ROYAL
HOSPITAL
SCHOOL



**EVER WONDERED IF PRISON
REALLY DOES CHANGE
CRIMINAL BEHAVIOUR?**

**OR WHY SOME PEOPLE
CONFORM?**

**OR PERHAPS IF THE
EXPERIENCES YOU HAD
BEFORE THE AGE OF FIVE
REALLY DO SHAPE THE
PERSON YOU ARE TODAY?**

WHY STUDY PSYCHOLOGY?

The mind is something intangible that exists within our brain - an unseen process of enzymes, chemicals and electric currents. But why is it that some people suffer from stress or mental illness? Or that others are considered abnormal for deviating from social norms? Psychology looks at questions like these and more. It's a fascinating science with cutting-edge research that has real world applications that you are bound to find interesting.

SKILLS REQUIRED?

There are NO specific entry requirements for this course but due to the mathematical and scientific aspects it is recommended that pupils have achieved a good GCSE in science and maths. However, if you are considering studying psychology at degree level you should be aware that some universities require a Grade 6 in GCSE Maths. Pupils will also be required to write 16 mark essays, so they need to consider their writing skills before studying psychology at A Level.

HOW WILL I BE ASSESSED?

A Level Psychology at RHS follows the AQA syllabus.

There are three exams, each accounting for one third of your A Level. Each exam lasts 2 hours, is worth 96 marks and consists of multiple choice, short answer and extended writing questions.

**LIKE ALL SCIENCE, PSYCHOLOGY IS
KNOWLEDGE; AND LIKE SCIENCE AGAIN,
IT IS KNOWLEDGE OF A DEFINITE THING,
THE MIND.**

- James Mark Baldwin

WHAT WILL I STUDY?

In the first year you will cover the following topics:

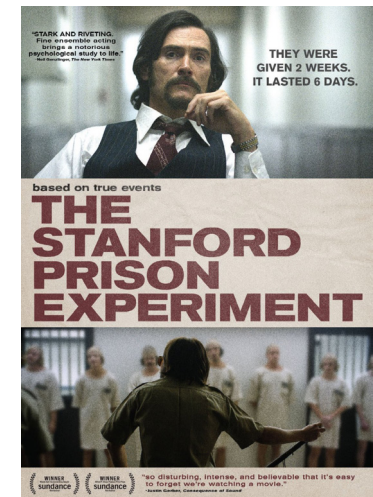
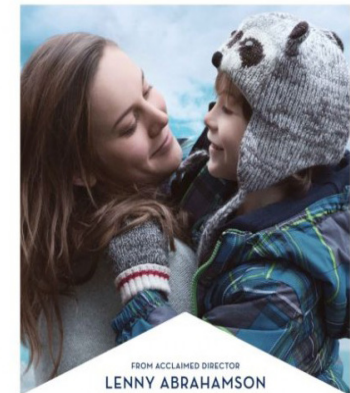
- Introductory topics in psychology: learn about conformity, social norms, how the mind remembers and forgets and how children form attachments.
- Psychology in context: learn more about the different approaches in psychology, biopsychology and how to design and conduct your own research.

In the second year of the A Level you'll deepen your understanding of human behaviour by studying issues and debates in psychology, where you will learn about the fascinating tendencies of human behaviour, with options looking into gender differences and the criminal mind. You then learn three further topics: gender, schizophrenia and forensic psychology, where you can discover more about psychological concepts, research methods and ethical issues.

WHAT SKILLS WILL I LEARN?

A Level Psychology will help you develop a range of skills that will benefit you, whether you decide to go on to further study or the working world, including:

- analytical thinking
- improved communication
- problem solving
- planning and conducting scientific investigations
- analysing and interpreting data
- critical reasoning skills
- how to view the world around you from different perspectives
- how to put across your point of view fluently



HOW WILL IT FIT IN WITH MY OTHER SUBJECTS?

Psychology will complement just about any other subject. Pupils who study psychology often also study biology, sociology, business, English or physical education. Also pupils who want a career in any of the caring services, or in marketing or human resources, will find an understanding of psychology useful.

POSSIBLE DEGREE OPTIONS

According to bestcourse4me.com, the top seven degree courses taken by students who have an A Level in psychology are:

- Psychology
- English Studies
- Sociology
- Business Studies
- Teaching
- Sport and Exercise Science
- Law

POSSIBLE CAREER OPTIONS

Psychology can help your career either directly or indirectly. Of course, if you wish to become a psychologist, therapist or mental health worker, this A Level is of direct value.

Studying Psychology at university can give you a whole host of exciting career options, including:

- Marketing
- Business development
- Accountancy
- Human resources
- Forensic psychology
- Occupational therapy
- Clinical psychology
- Nursing
- Teaching

www.bps.org.uk/careers-in-psychology

THINK DIFFERENTLY WITH A LEVEL PSYCHOLOGY

If you would like to discuss the A Level specification and the options that the Psychology department offer, please don't hesitate to contact
Mrs Kelly Wilcock, Head of Psychology

e kwilcock@royalhospitalschool.org