

# MISD Proposed ESSER Plans



## ESSER Funds

Elementary and Secondary  
School Emergency Relief



**Plan & Information**

# Objectives

1. Present Overview of ESSER Funding Sources
2. Propose plan and areas addressed in the plan
3. Seek approval to move forward with the plan



# Federal Funds

1. ESSER 1 – Dollars from federal government used to supplant state allocation to districts
2. ESSER 2 – Without supplanting would approximately be 36M; will be adjusted for ADA (Hold Harmless)
3. ESSER 3 – Funding allocated is approximately 82.5M
4. Plan must be presented to the public and Board of Trustees
5. Plan can extend beyond two years with state approved accounting methods



# MISD's Needs Assessment

1. Student Learning Loss beginning Summer 2021
2. SEL for return to school
3. One-to-One Initiative
4. Connectivity
5. Facilities
6. Staff Support



NEEDS  
ASSESSMENT



# Student Learning Loss



# Student Learning Loss

1. Learning Recovery Specialist
2. Learning Recovery Teacher
3. Stipends for Summer School Teachers
4. Professional Learning
5. Possibilities (Additional Stipends)



# Learning Recovery Specialist

1. 2 certified teachers for each school in MISD at least
2. Campuses will have autonomy in how to use this position
3. Position will be 18 hours a week and structured based upon campus plans
4. Hours of operation would be during the day
5. Position will be for pull-outs/push-in or teacher support
6. Pay is based upon years of experience on current teacher pay scale





# Learning Recovery Teacher

1. Approximately 30% of staff
2. Identification of staff based upon profile
3. Serve identified students based upon tested measures of TEKS attainment
4. Time of service could be during the day, after school, evenings or weekends based upon campus plans
5. Pay would be \$10,000 stipend paid out over the course of the year





# One-to-One Initiative



# One-to-One Initiative

1. District implemented one-to-one initiative based upon the impact of COVID
2. District has a plan for replacement of technology to ensure greatest access and device capabilities
3. Device replacement plan



ONE  
to ONE

Digital Teaching & Learning Initiative

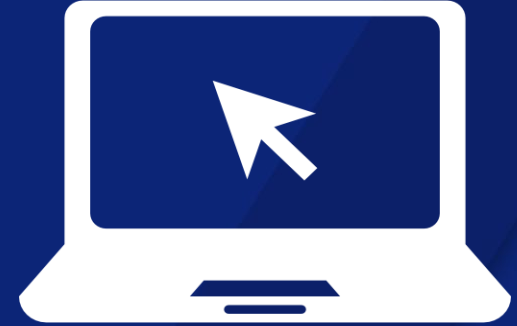


# Connectivity



# Connectivity

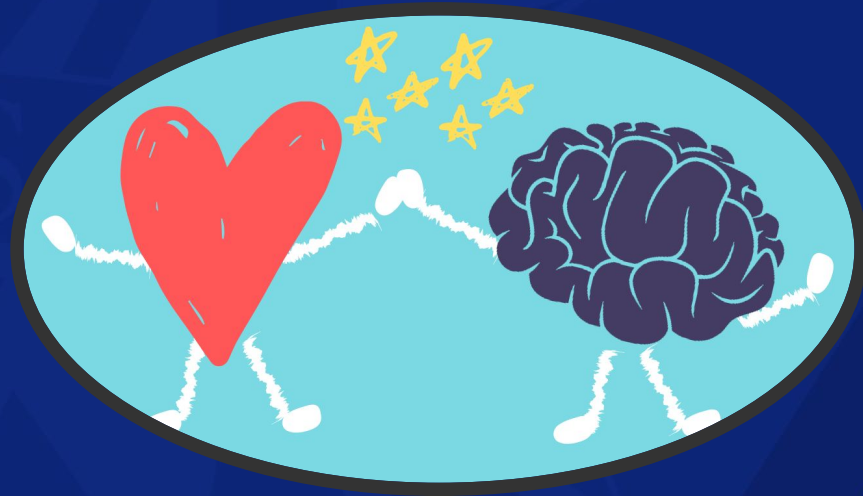
1. **Creating equal access for all students is a priority**
2. **MISD is working in collaboration with the City of Mesquite to develop a plan to ensure connectivity across the district**
3. **Investigating feasibility to provide access on school buses**



[mesquiteisd.org](http://mesquiteisd.org)



# Social Emotional Learning (SEL)



# 4 Levels of Support

1. Trauma-Informed Global/SEL
2. School Counselor-campus based activities
  - a. Individual
  - b. Group
  - c. Targeted
3. Family Support
  - a. Intensive Therapy
4. Referral for Outpatient Services



# Facilities





# Facilities

1. Installed a Bipolar Ionization System – 7.5M
2. Extra cleaning products/hours – exceeded 500K
3. Examining connectivity for buses
4. Water bottle distribution systems
5. Reimbursement costs would be funded last as student learning loss is our top priority



# Professional Learning



# Professional Learning

1. Provided to identified staff based upon campus plans
2. Use instructional coaches as well as technology facilitators
3. Job-embedded professional learning
4. Focus of the professional learning is being developed by Dr. Karen Nix

Professional Learning



# Special Education

1. Provide professional learning to identified staff working with autistic students grades 6-12.
2. Use SPED instructional specialists as well as STAR autism support coaches.
3. Job-embedded professional learning.
4. Focus of the professional learning has been developed collaboratively between special education and STAR autism support.



# Questions

