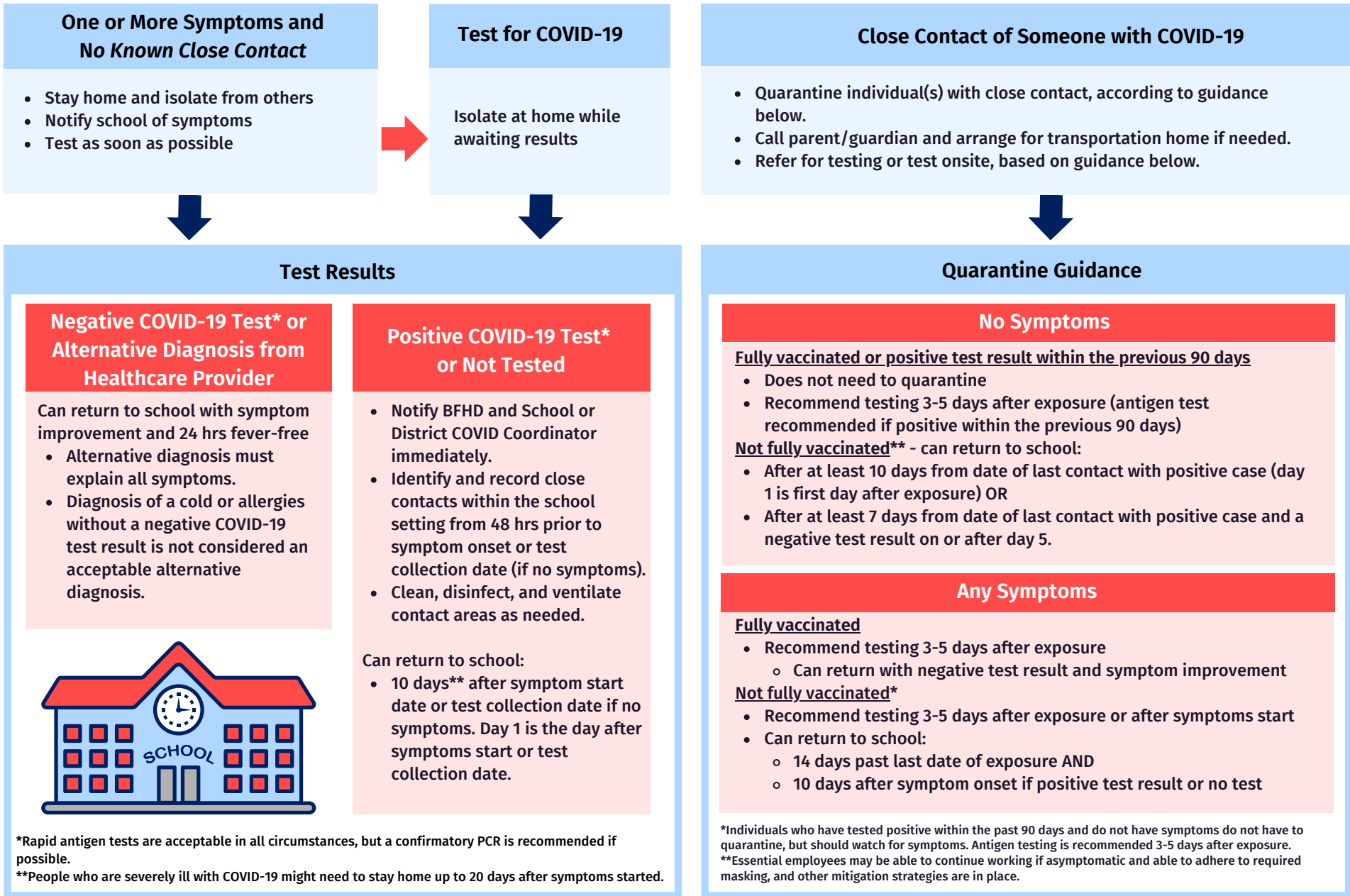


# COVID-19 Flow Chart for Schools



\*Rapid antigen tests are acceptable in all circumstances, but a confirmatory PCR is recommended if possible.

\*\*People who are severely ill with COVID-19 might need to stay home up to 20 days after symptoms started.

\*Individuals who have tested positive within the past 90 days and do not have symptoms do not have to quarantine, but should watch for symptoms. Antigen testing is recommended 3-5 days after exposure.

\*\*Essential employees may be able to continue working if asymptomatic and able to adhere to required masking, and other mitigation strategies are in place.

# COVID-19 Flow Chart for Schools

## COVID-19 Symptoms (not related to another condition)

Fever (100.4 or higher)  
Chills  
Cough  
Sore throat

Headache  
Muscle/body aches  
Congestion  
Runny nose

Fatigue  
Diarrhea (2 or more loose stools in 24 hrs)  
Nausea or vomiting  
Loss of taste or smell  
Shortness of breath/difficulty breathing

## Definitions

### Close Contact

In general, a close contact is anyone within 6ft of a person with COVID-19 for 15 cumulative minutes or more over a 24 hr period during the time when the person with COVID-19 was infectious (2 days prior to symptom onset or test collection date and 10 days after). Close contacts who have tested positive within the previous 90 days are excluded from quarantine.

In a K-12 classroom, students who are at least 3ft away from an infected student when both students were wearing masks/face coverings are not considered close contacts.

### Infectious Period

An individual is considered infectious for two days prior to symptom onset or test collection date (if no symptoms) and 10 days after symptom onset or test collection date.

### Alternative Diagnosis

Lab-confirmed diagnosis, such as strep throat or viral pathogen. Can also include childhood rash illness, acute otitis media, etc. COVID-19 test still strongly recommended in addition to alternative diagnosis. Diagnosis of a cold or allergies without a negative test result is not considered an acceptable alternative diagnosis.

### Fully Vaccinated

Individuals are considered fully vaccinated if at least two weeks have passed since their final dose (2 doses for Pfizer and Moderna, 1 dose for Johnson & Johnson).