



ORANGE UNIFIED SCHOOL DISTRICT

Measure S Bond Program

July 2021 Monthly Progress Report



PERIOD COVERED:

July 1-31, 2021

FISCAL YEAR

FY 2021-2022

PROGRESS REPORT NO.

PR-049-2021-049

PREPARED BY:

CUMMING
Building Value Through Expertise



TABLE OF CONTENTS

1.0 Executive Summary

- 1.1 Program Summary
- 1.2 Program Highlights/Key Milestones
- 1.3 Look Ahead (next 90 days)

2.0 Project Status Report

- Canyon HS – Science Center
- El Modena HS – Science Center
- Orange HS – Utility Infrastructure (Increment # 1)
- Orange HS – Science Center (Increment # 2)
- Villa Park HS – Interim Housing & Science Center

3.0 Financial Report

- 3.1 Project Cost Estimate
 - Budget vs Actuals with Vendor details per High School
- 3.2 Cash Flow Projections

4.0 Program Schedule Summary

- 4.1 Phase I Schedule Summary
- 4.2 Phase II Schedule Summary



1.0 EXECUTIVE SUMMARY

1.1 Program Summary

Division of State Architects (DSA) approval to establish Phase 1 design criteria completed as follows:

- (Completed) September 22, 2020 - El Modena HS Phase 1 Quad (04-119124)
- (Completed) October 24, 2019 - Villa Park HS New Parking and Drop Off (04-118521).
- (Completed) June 25, 2019 - Orange HS Custom Tensile Fabric Shade Structures (04-118351)
- (Completed) May 2, 2019 - Canyon HS Interim Modular Kitchen (04-118418)
- (Completed) January 31, 2019 - Canyon HS Science Center (04-117300)
- (Completed) November 6, 2018 - El Modena HS Science Center (04-117098)
- (Completed) August 16, 2018 - Villa Park HS Science Center (04-117022)
- (Completed) July 12, 2018 - Orange HS Science Center (Increment # 2) (04-116859)
- (Completed) April 10, 2018 - Orange HS Increment # 1 (Satellite Kitchen) (04-116673.2)
- (Completed) March 1, 2018 - Orange HS Increment #1 (Infrastructure Upgrades, Move Relocatable Buildings, Bus Drop-Off, Restroom Renovation Project) (04-116673.1)
- (Completed) February 7, 2018 - Villa Park HS Interim Housing (DSA Application #04-116788)

Phase 1 construction started / completed, as follows:

- (Construction Start - June 15, 2018 – Orange HS Site Infrastructure (Increment #1)
 - **Completed** September 4, 2019 – Orange HS Site Infrastructure (Increment #1) (04-116673.1)
- (Construction Start) January 7, 2019 – Villa Park HS (Interim Housing and Science Center)
 - **Completed** April 26, 2019 – Install ten (10) Portable Modular Buildings (04-116788)
 - **Completed** October 9, 2020 – Parking Lot Drop-Off (04-118521)
- (Construction Start) February 18, 2019 – Orange HS Science Center (Increment #2)
 - **Completed** April 8, 2020 – Custom Tensile Fabric Shade Structure (04-118351)
 - **Completed** June 24, 2021 – Orange HS Science Center (04-116859)
- (Construction Start) April 2, 2019 – El Modena HS Science Center.
- (Construction Start) June 12, 2019 – Canyon HS Interim Housing & Science Center
 - **Completed** August 7, 2020 – Interim Modular Kitchen (04-118418)

Division of State Architects (DSA) submission to establish Phase 2 design criteria as follows:

- (**Submitted**) March 3, 2021 – Villa Park HS Phase 2 (04-119694)
- (**Submitted**) April 23, 2021 – El Modena HS Phase 2 (04-120032)
- (**Submitted**) May 26, 2021 – Orange HS Phase 2 (04-120151)

1.2 Program Highlights/Key Milestones



California Environmental Quality Act (CEQA) Compliance Achieved on Phase 1 (as required by law):

- Villa Park HS Science Center – Notice of Exemption (Board approved on 9/20/18).
- Canyon HS Science Center – Notice of Exemption (Board approved on 7/26/18).
- Orange HS Science Center – Notice of Exemption (Board approved on 3/8/18).
- El Modena HS Science Center – Notice of Exemption (Board approved on 3/8/18).

Phase II Measure S Bond Project Development Update:

- As of 07/23/21 at Canyon HS, Cannon Parkin held the full DSA page-turn, preparing for the DSA submission on 8/16/2021. [The DSA application number for this project; 04-120410.](#)
- As of 7/31/21, at Villa Park HS - Phase 2 (04-119694), submitted for DSA Plan Review on March 3, 2021. DSA review continues.
- As of 7/31/21, at El Modena HS - Phase 2 (04-120032), submitted for DSA Plan Review on April 23, 2021. DSA review continues.
- As of 7/31/21, at Orange HS - Phase 2 (04-120151), submitted for DSA Plan Review on May 26, 2021. DSA review continues.
- As of 07/31/21, sent out the request for proposal CEQA process for the four (4) Phase II projects, using the audit group that conducted the Phase I audits and is familiar with the each of the HS campuses

Program Wide Cash Flow Projection / Bond Issuance

- As of 07/31/21, we are preparing to revise the last cash flow assessment in March 2021, which the current projections of the Phase II projects are based on.
- New analysis data on the slow spending in the Phase I program and current market conditions due to the COVID-19 pandemic, it appears that selling Bonds before May 2022 needs to be re-analyzed.

Project Achievements:

- Submitted DSA-168 for the final costs at the Orange HS Science Center Project (04-116859), including the final change order # 10, for close out. On 7/23/2021, DSA issued a final cost, reflecting an amount of \$90,121.26. A check request was issued.
- Submitted the DSA-168 for the final costs at the Villa Park HS Parking Drop-Off Project (04-118521), including the balance of outstanding change orders. Awaiting the final review from DSA.
- As of 07/31/21, the last processed [payment application # 25 \(Mar-Apr\)](#), for Pinner (OHS) reflecting 100% paid overall completion, reflecting [554 calendar days](#) (full contract time) elapsed.



- As of 07/31/21, processing [payment application # 26](#) (June), for ACI (EMHS) reflecting [75%](#) paid overall completion, reflecting [389 calendar days](#) elapsed.
- As of 07/31/21, processing [payment application # 27](#) (May), for ACI (VPHS) reflecting [68%](#) paid overall completion, reflecting [469 calendar days](#) elapsed.
- As of 07/31/21, processing [payment application # 25](#) (June), for Swinerton (CHS) reflecting [64%](#) paid overall completion, reflecting [716 calendar days](#) elapsed.

1.3 Look Ahead (next 90 days)

Board of Education Agenda

August 19th

1. Recommend Board approval of a contract **Amendment # 8** to **HED Architects** to provide extension of construction administration services from March 20, 2021, to December 15, 2021, needed at **El Modena HS Science Center** project, in the amount of **\$279,270** (which includes \$9,090 in reimbursable expense).

Program Wide

- Orange HS Science Center – completing final punch list items on the Science Center, any item remaining will be placed on the Warranty list. Recorded with the County of Orange, now awaiting the final release of retention.
- Orange HS Science Center – DSA -168 final cost was submitted for the new Science Center building, and a check request was prepared for submission. Once received, expecting a DSA Certificate of Completion.
- Orange HS Science Center – Move Manager focusing on post-move on-site assistance for teachers. Removal of post-relocation surplus items as approved by the principal and readiness of relocated classrooms for new occupants or demolition in preparation for the Phase 2 project.
- Orange HS Phase II – Lionakis (Architect of Record) responding to any DSA comments during plan review.
- El Modena HS Science Center – Continue the final stages of completing the NNC items concerning the structural steel welding, pouring slabs, setting steel for the roof decks, interior framing, drywall and interior utility line runs.
- El Modena HS Science Center – ACI (general contractor) submitted a Recovery Schedule, reflecting a substantial completion date s of: 12/02/2021. Project team is reviewing the



remaining critical path work, Fragnets, successor and predecessor task linkages for conflicts, for possible approved of this schedule.

- El Modena HS Phase II – HED (Architect of Record) responding to any DSA comments during plan review.
- El Modena HS Phase II – Move Manager received moving boxes and supplies which were delivered to teacher classrooms that will be relocating to the new Science center building. Work with the furniture vendor on the storage proposal and partial invoicing of the product due to the delay in the construction schedule.
- Villa Park HS Interim Housing & Science Center – Moving forward with all exterior and interior framing and work to make the building weather tight, drywall, and interior wiring and utility line runs, ceiling grids and all rough finish work.
- Villa Park HS Interim Housing & Science Center – Completing final punch list items and asphalt issues to complete the Parking and Drop Off zone (04-118521) work. DSA approved the Path-of-Travel (POT) construction change directive. Issue this change to ACI (general contractor) for this construction. Upload all DSA final documents.
- Villa Park HS Science Center – Requesting a recovery schedule for the ACI (general contractor) on the un-approved substantial completion date which currently reflects 12/12/2021, that has been reflected in their last schedule update and topic of weekly discussion in meetings.
- Villa Park HS Phase II – LPA (Architect of Record) responding to any DSA comments during plan review.
- Villa Park HS Phase II – Move Manager continues preparation for relocations (teacher meetings, rooms/items relocating review, moving supplies orders/delivery, hazmat, and surplus items removal), new furniture delivery, and assistance in OFCI delivery.
- Canyon HS Science Center – Continue interior and exterior framing, drywall to make building weather tight, interior electrical and utility line runs, as well as completing the MPR area along with the ramps and sidewalks needed.
- Canyon HS Phase II – Cannon Design (Architect of Record) moving forward to final design for the Phase II project. DSA page-turn meeting was held on 7/23/2021, with all teams to review the Phase II scope of work prior to final DSA submission. CannonDesign moving forward to finalize application 04-120410, to meet at DSA filing date of 8/17/2021
- Canyon HS Phase II – Prepare to review the Phase II 100% construction cost estimates from the Construction Manager for adherence to budget. Revise the design to conform to budget, if necessary.



2.0 PROJECT STATUS REPORT



Canyon High School
New STEM Building

CANYON HIGH SCHOOL
New STEM Building



EL MODENA SCIENCE CENTER
05.11.2017

Overall View

HED
10



Orange High School Science Center



AT VILLA PARK HIGH SCHOOL

LPA



CANYON HIGH SCHOOL

CANYON HS SCIENCE CENTER

- ✓ 12 Laboratory Rooms
- ✓ 12 General Classrooms
- ✓ Student Services
- ✓ New Food Services

- ✓ New Multi-Purpose Room Entry
- ✓ Parking Lot Improvements
- ✓ Infrastructure Upgrade and Improvements
- ✓ Landscape Improvements

Project Update (Construction):

- As of 07/31/21, Swinerton continuing with internal utility and wire runs, 2nd floor run penetrations, sidewalk pours, site excavation, roofing deck and penetrations, grading, parking lot paving, and fencing trenching within the new science center building footprint, also completing the MPR exterior finishes on store front and sidewalks for turn-over to the District.
- On 07/22/21, the Board approved Change Order # 14 for Swinerton at Canyon HS in the amount of; Change Order No. 14: \$119,324 – 0 Calendar Days Additional Contract Time; Description: General Contractor costs based on Twelve (12) PCO's: Eight (8) Unforeseen Conditions, Three (3) Owner Requested and One (1) Design Related changes.
- As of 07/31/21, Move Manger received a request from the principal with the occupancy list for the new Science Building and meeting availability for the staff and teachers for the move presentation. Confirm the classroom furniture placement plan and send the updates to the furniture vendor. Create the CHS Occupancy Plan move presentation for District leadership review.
- As of 07/31/21, processing payment application # 25 (June) reflecting 64% paid overall completion, reflecting 716 calendar days elapsed.

See Construction Photo's below:



Left to right: exterior fascia (near Admin), aerial of roof half with cool deck, exterior scaffolding in place all around building, aerial view of the modernized MPR building entrance with canopy, windows and fascia board in place (west side), landscaping adjacent to the modernized MPR building.



EL MODENA HS SCIENCE CENTER

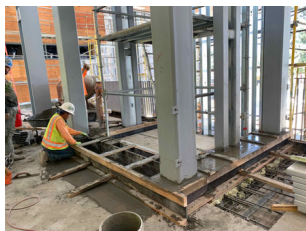
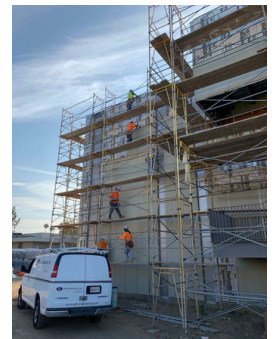
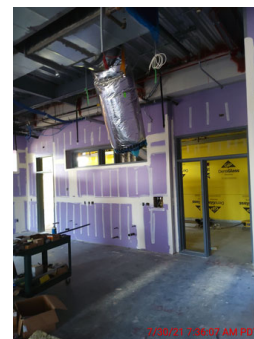
- ✓ 12 Laboratory Rooms
- ✓ 1 General Classrooms
- ✓ 2 Medically Fragile Classrooms

- ✓ Relocation of Campus MDF
- ✓ Technology & Utility Upgrade
- ✓ Landscape Improvements

Project Update (Construction):

- As of 07/31/21, Angeles is correcting all deviation issues, prioritizing the Stop issues, correction of continuity and cap plates, reducing the number of NNC issues, completing, duct penetrations in roof, interior utility line runs, interior framing, stairs, HVAC ductwork, taping and drywall, focusing on the building being weather-tight.
- On 07/22/21, the Board approved of Change Order # 5 for Angeles Contractor, Inc. at El Modena HS in the amount of; Change Order No. 5: \$20,091 – 0 Calendar Days Additional Contract Time; Description: General Contractor costs and time based on Nine (9) PCO's: One (1) Unforeseen Conditions, One (1) Owner Requested Changes and Seven (7) Design Related change.
- On 07/27/21, ACI submitted a Recovery Schedule, reflecting a substantial completion date s of: 12/2/2021. Reviewing the remaining critical path work, Fragnets, successor and predecessor task linkages for conflicts.
- As of 07/31/21, the Project Manager is in place to augment the construction management staff, to help move the issues that are trying to stall and further delay this project.
- As of 07/31/21, Move Manger received moving boxes and supplies which were delivered to teacher classrooms that will be relocating to the new Science center building. Work with the furniture vendor on the storage proposal and partial invoicing of the product due to the delay in the construction schedule.
- As of 07/31/21, processing payment application # 26 (June) reflecting 75% paid overall completion, reflecting 389 calendar days elapsed.

See Construction Photo's below:



Left to right: Roof opening cover, Interior wall board cover pipe, conduit and wire run, interior gypsum board mud and tape, piping, and wire pulls, Tamliam wrap and fiber board, elevator concrete curb framed, interior ceiling middle entrance.



ORANGE HS SCIENCE CENTER

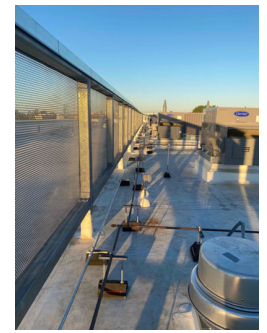
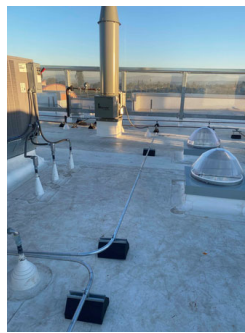
- ✓ 12 Laboratory Rooms
- ✓ 1 General Classrooms

- ✓ New Panther Pavilion Plaza
- ✓ 2 Medically Fragile Classrooms

Project Update Increment # 2 – Science Center (Close Out):

- As of 07/31/21, Pinner completing all punch list work on the interior and exterior of the STEM building, establish the warranty exceptions list with cost.
- On 07/23/21, DSA issued a final cost, including the balance of outstanding change orders, reflecting and amount of: \$90,121.26. A check request was issued.
- On 07/26/21, The Notice of Completion for – S1819-003 Orange High School Science Center (Rebid of S1819-001), in the amount of: \$27,304,487.11, was recorded with the County of Orange.
- As of 07/31/21, the draft payment application # 26 (May-July), reflecting the release of retention is being reviewed for processing. All items needed for release are being prepared, including the letter to the escrow agent representing the bank.
- As of 07/31/21, processing payment application # 25 (Mar-Apr), reflecting **100%** paid overall completion, reflecting **554 calendar days** (full contract time) elapsed.

[See Construction Photo's below:](#)



Left to right: Various photos on the roof mounted piping and wiring finished to the roof top equipment, site benches (oof entrance) and roll up door in classroom.





VILLA PARK HIGH SCHOOL

SCHOOL OF EXCELLENCE

VILLA PARK HS SCIENCE CENTER

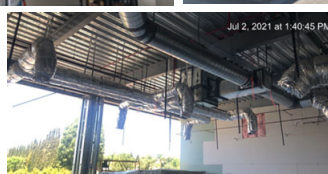
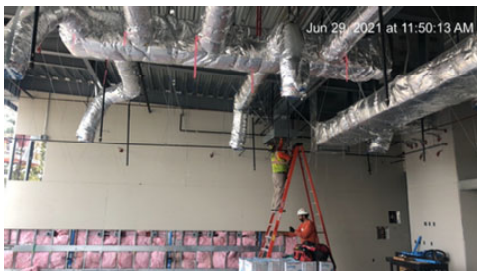
- ✓ 12 Laboratory Rooms
- ✓ 2 General Classrooms
- ✓ 2 Medically Fragile Classrooms

- ✓ Demolish existing building 300
- ✓ Install 10 New Portable Buildings

Project Update ([Construction](#)):

- As of 07/31/21, Angeles completing roofing penetrations, interior utility line runs, interior framing, starting exterior facia, hvac ductwork runs, drop ceiling, insulation, exterior masonry wall, interior drywall with mud and taping, focusing on the building being weather-tight as well as completing the punch list work for the parking drop off entrance.
- As of 07/31/21, requesting a recovery schedule for the general contractor on the un-approved substantial completion date which currently reflects December 12, 2021, that has been reflected in their last schedule update and topic of weekly discussion in meetings.
- As of 07/31/21, DSA is reviewing the final costs, including the balance of outstanding change orders, for close out on the Parking Drop-Off project (04-118521).
- As of 07/31/21, Move Manger received moving boxes and supplies which were delivered to teacher classrooms that will be relocating to the new Science center building. Work with the furniture vendor on the storage proposal and partial invoicing of the product due to the delay in the construction schedule.
- As of 07/31/21, processing payment application # 27 (May) reflecting **68%** paid overall completion, reflecting **469 calendar days** elapsed.

[See Construction Photo's below:](#)



Left to right: Interior overhead duct, conduit and wire runs, insulation in place, drywall, in interior hallway and classroom walls, and exterior window framing.



**Measure S Bond Program
Financial Report for July 2021**

3.0 Financial Report

3.1 Project Cost Estimate

QSS Data thru 7/31/2021

	Budget	Contracted to Date	Expended to Date	Quarterly Expense Jul '21 - Sep '21	% Expended
PROGRAM					
Phase 1 - HS Science Center	\$204,646,115	\$160,763,737	\$125,844,742	\$5,827,223	61.49%
Phase 2	\$86,957,789	\$8,507,958	\$5,121,646	\$276,238	5.89%
TOTAL	\$291,603,903	\$169,271,695	\$130,966,388	\$6,103,461	44.91%
Canyon High School					
Phase 1 - HS Science Center	\$68,613,051	\$50,712,718	\$34,764,516	\$2,870,025	50.67%
Phase 2	\$4,653,230	\$1,144,222	\$611,744	\$78,135	13.15%
TOTAL	\$73,266,281	\$51,856,941	\$35,376,259	\$2,948,160	48.28%
El Modena High School					
Phase 1 - HS Science Center	\$40,031,702	\$34,298,056	\$25,681,377	\$1,463,603	64.15%
Phase 2	\$32,741,295	\$2,621,890	\$1,773,335	\$60,586	5.42%
TOTAL	\$72,772,997	\$36,919,946	\$27,454,712	\$1,524,188	37.73%
Orange High School					
Phase 1 - HS Science Center	\$51,648,075	\$42,478,860	\$42,003,149	\$130,296	81.33%
Phase 2	\$21,217,888	\$2,215,447	\$1,322,088	\$92,984	6.23%
TOTAL	\$72,865,963	\$44,694,307	\$43,325,237	\$223,280	59.46%
Villa Park High School					
Phase 1 - HS Science Center	\$44,353,287	\$33,274,103	\$23,395,700	\$1,363,300	52.75%
Phase 2	\$28,345,375	\$2,526,398	\$1,414,479	\$44,534	4.99%
TOTAL	\$72,698,662	\$35,800,501	\$24,810,180	\$1,407,833	34.13%



Measure S Bond Program

Financial Report for July 2021

Budget vs Actuals - By School and Budget Category with Vendor Detail

QSS Data thru 7/31/2021

	Budget	Contracted to Date	Expended to Date	Quarterly Expense Jul '21 - Sep '21	% Expended
Canyon High School					
390-9520 Canyon HS Science Center (DSA 04-117300)					
1. Design Cost					
1.01 Architect					
UNCOMMITTED	\$13,600	\$0	\$0	\$0	
GKKWORKS CANNON DESIGN	\$3,122,050	\$3,122,050	\$2,977,211	\$0	95.36%
LIONAKIS	\$14,058	\$14,058	\$14,058	\$0	100.00%
	\$3,149,708	\$3,136,108	\$2,991,269	\$0	94.97%
2. Construction Cost					
2.01 Construction					
UNCOMMITTED	\$227,291	\$0	\$0	\$0	
SWINERTON BUILDERS	\$39,075,042	\$39,075,042	\$25,202,628	\$2,729,071	64.50%
	\$39,302,332	\$39,075,042	\$25,202,628	\$2,729,071	64.13%
2.02 OFCI and Other Construction					
UNCOMMITTED	\$364,996	\$0	\$0	\$0	
ACCO ENGINEERED SYSTEMS INC	\$236,785	\$236,785	\$236,785	\$0	100.00%
AMERICAN REPROGRAPHICS CO LLC	\$1,026	\$1,026	\$0	\$0	0.00%
CITY OF ANAHEIM - ELECTRICAL ENGINEERING DIV	\$91,340	\$91,340	\$91,340	\$0	100.00%
DEVELOPMENT GROUP INC	\$90,440	\$90,440	\$38,339	\$38,339	42.39%
VWR INTERNATIONAL LLC	\$16,691	\$16,691	\$0	\$0	0.00%
WW GRAINGER INC	\$1,039	\$1,039	\$1,039	\$0	100.00%
	\$802,317	\$437,321	\$367,502	\$38,339	45.81%
3. Program and Construction Management					
3.01 Program Management Fees					
UNCOMMITTED	\$1,002,060	\$0	\$0	\$0	
CUMMING CONSTRUCTION MGMT INC	\$1,198,897	\$2,179,717	\$1,055,523	\$0	88.04%
	\$2,200,957	\$2,179,717	\$1,055,523	\$0	47.96%
3.02 Construction Management Fees					
UNCOMMITTED	\$374,766	\$0	\$0	\$0	
CORDOBA CORPORATION	\$87,508	\$87,508	\$87,479	\$0	99.97%
GAFCON INC	\$2,258,845	\$2,431,047	\$2,186,488	\$61,529	96.80%
	\$2,721,119	\$2,518,555	\$2,273,967	\$61,529	83.57%
4. Construction Support Costs					
4.01 Rental					
UNCOMMITTED	\$1	\$0	\$0	\$0	
	\$1	\$0	\$0	\$0	0.00%
4.02 Title, Environmental, Stormwater Management					



Measure S Bond Program

Financial Report for July 2021

Budget vs Actuals - By School and Budget Category with Vendor Detail

QSS Data thru 7/31/2021

	Budget	Contracted to Date	Expended to Date	Quarterly Expense Jul '21 - Sep '21	% Expended
UNCOMMITTED	\$56,555	\$0	\$0	\$0	
CHICAGO TITLE COMPANY	\$750	\$750	\$750	\$0	100.00%
CITY OF ANAHEIM	\$2,524	\$2,524	\$2,524	\$0	100.00%
CITY OF ANAHEIM - WATER	\$3,082	\$3,082	\$3,082	\$0	100.00%
COUNTY OF ORANGE - ENVIRONMENTAL HEALTH	\$1,615	\$1,615	\$1,615	\$0	100.00%
ENVIRONMENTAL AUDIT INC	\$50,800	\$50,800	\$21,375	\$0	42.08%
OUSD COST OF INTEREST DISTRIBUTION	\$1	\$1	\$1	\$0	100.00%
	\$115,327	\$58,771	\$29,346	\$0	25.45%
4.03 Commissioning					
UNCOMMITTED	\$23,241	\$0	\$0	\$0	
P2S ENGINEERING INC	\$49,202	\$49,202	\$39,865	\$1,470	81.02%
	\$72,443	\$49,202	\$39,865	\$1,470	55.03%
4.04 Builders Risk Insurance					
UNCOMMITTED	\$0	\$0	\$0	\$0	
	\$0	\$0	\$0	\$0	
4.05 DSA Review Fees					
UNCOMMITTED	\$76,626	\$0	\$0	\$0	
DIVISION OF STATE ARCHITECT	\$504,370	\$504,370	\$504,370	\$0	100.00%
	\$580,996	\$504,370	\$504,370	\$0	86.81%
4.06 Postage, Printing & Advertising					
UNCOMMITTED	\$56,830	\$0	\$0	\$0	
AMERICAN REPROGRAPHICS CO LLC	\$16,561	\$16,561	\$10,950	\$0	66.12%
SOUTHERN CALIFORNIA NEWS GROUP	\$2,605	\$2,605	\$2,605	\$0	100.00%
	\$75,997	\$19,167	\$13,555	\$0	17.84%
4.07 DSA Inspection (IOR)					
UNCOMMITTED	\$139,851	\$0	\$0	\$0	
KNOWLAND CONSTRUCTION SERVICES	\$454,016	\$454,016	\$271,128	\$0	59.72%
	\$593,867	\$454,016	\$271,128	\$0	45.65%
4.08 DSA Construction Phase Testing (LOR)					
UNCOMMITTED	\$90,876	\$0	\$0	\$0	
AMERICAN ENGINEERING LABORATORIES INC	\$556,995	\$556,995	\$441,484	\$0	79.26%
	\$647,871	\$556,995	\$441,484	\$0	68.14%
4.09 Relocation					
UNCOMMITTED	\$23,140	\$0	\$0	\$0	
ULINE INC	\$1,860	\$1,860	\$0	\$0	0.00%
	\$25,000	\$1,860	\$0	\$0	0.00%
4.10 Labor Compliance					
UNCOMMITTED	\$47,498	\$0	\$0	\$0	
	\$47,498	\$0	\$0	\$0	0.00%
4.11 Preliminary Testing (Hazmat, Topo, Geo, etc)					
UNCOMMITTED	\$229,637	\$0	\$0	\$0	



Measure S Bond Program

Financial Report for July 2021

Budget vs Actuals - By School and Budget Category with Vendor Detail

QSS Data thru 7/31/2021

	Budget	Contracted to Date	Expended to Date	Quarterly Expense Jul '21 - Sep '21	% Expended
C BELOW SUBSURFACE IMAGING (Subsurface Investigation)	\$8,445	\$8,445	\$8,445	\$0	100.00%
CALIFORNIA GEOLOGICAL SURVEY (Geology and Seismology Review)	\$3,600	\$3,600	\$3,600	\$0	100.00%
ENVIRONMENTAL NETWORK CORPORATION	\$20,210	\$20,210	\$20,193	\$0	99.91%
HARRINGTON GEOTECHNICAL ENGINEERING INC (Geotechnical Soils Investigation)	\$13,500	\$13,500	\$13,500	\$0	100.00%
PROVENCHER, GEORGE (dba PROVO ENGINEERING)	\$720	\$720	\$720	\$0	100.00%
RMA GROUP (dba SITESCAN)	\$26,103	\$26,103	\$26,103	\$0	100.00%
XICOTENCATL ENRIQUE SALAZAR (Topographical Survey)	\$20,100	\$20,100	\$20,100	\$0	100.00%
	\$322,315	\$92,678	\$92,660	\$0	28.75%
4.12 Utility Connection Fees (Local Permits)					
UNCOMMITTED	\$173,033	\$0	\$0	\$0	
AT&T	\$5,302	\$5,302	\$5,302	\$0	100.00%
CITY OF ANAHEIM - ELECTRICAL ENGINEERING DIV	\$2,756	\$2,756	\$2,756	\$0	100.00%
CROWN CASTLE INTERNATIONAL	\$6,455	\$6,455	\$6,455	\$0	100.00%
SOUTHERN CALIFORNIA GAS CO	\$2,445	\$2,445	\$2,445	\$0	100.00%
	\$189,991	\$16,958	\$16,958	\$0	8.93%
4.13 FF&E (Laboratory Tables and Chairs, other)					
UNCOMMITTED	\$656,741	\$0	\$0	\$0	
VWR INTERNATIONAL LLC	\$9,486	\$9,486	\$9,486	\$9,486	100.00%
	\$666,227	\$9,486	\$9,486	\$9,486	1.42%
4.14 Legal Counsel					
UNCOMMITTED	\$94,996	\$0	\$0	\$0	
	\$94,996	\$0	\$0	\$0	0.00%
5. Contingency					
5.01 Construction Contingency					
UNCOMMITTED	\$1,884,111	\$0	\$0	\$0	
	\$1,884,111	\$0	\$0	\$0	0.00%
5.02 Project Contingency					
UNCOMMITTED	\$12,813,995	\$0	\$0	\$0	
	\$12,813,995	\$0	\$0	\$0	0.00%
Total 390-9520 Canyon HS Science Center (DSA 04-117300)	\$66,307,067	\$49,110,245	\$33,309,741	\$2,839,894	50.24%
390-9520 Canyon HS Unallocated Funds F21					
4. Construction Support Costs					
4.15 Miscellaneous Fees					
UNCOMMITTED	\$0	\$0	\$0	\$0	
OUSD COST OF INTEREST DISTRIBUTION	\$36,936	\$36,936	\$36,936	\$0	100.00%
	\$36,936	\$36,936	\$36,936	\$0	100.00%



Measure S Bond Program

Financial Report for July 2021

Budget vs Actuals - By School and Budget Category with Vendor Detail

QSS Data thru 7/31/2021

	Budget	Contracted to Date	Expended to Date	Quarterly Expense Jul '21 - Sep '21	% Expended
5. Program Reserve					
5.03 Interest Earned - Reserve					
UNCOMMITTED	\$1,229,345	\$0	\$0	\$0	
	\$1,229,345	\$0	\$0	\$0	0.00%
Total 390-9520 Canyon HS Unallocated Funds F21	\$1,266,281	\$36,936	\$36,936	\$0	2.92%
390-0000 Canyon HS IP Surveillance Camera and Systems					
4. Construction Support Costs					
4.13 FF&E (Laboratory Tables and Chairs, other)					
UNCOMMITTED	\$0	\$0	\$0	\$0	
CDW GOVERNMENT INC (Parts for IP Camera Systems)	\$29,337	\$29,337	\$29,337	\$0	100.00%
DIGITAL NETWORKS GROUP INC (F/I IP Camera Software)	\$7,093	\$7,093	\$7,093	\$0	100.00%
INTER-PACIFIC INC	\$18,163	\$18,163	\$18,163	\$0	100.00%
	\$54,593	\$54,593	\$54,593	\$0	100.00%
Total 390-0000 Canyon HS IP Surveillance Camera and Systems	\$54,593	\$54,593	\$54,593	\$0	100.00%
390-9520 Canyon HS Interim Kitchen (DSA 04-118418)					
1. Design Cost					
1.01 Architect					
UNCOMMITTED	\$0	\$0	\$0	\$0	
GKKWORKS CANNON DESIGN	\$119,620	\$119,620	\$11,475	\$0	9.59%
	\$119,620	\$119,620	\$11,475	\$0	9.59%
2. Construction Cost					
2.01 Construction					
UNCOMMITTED	\$0	\$0	\$0	\$0	
SWINERTON BUILDERS	\$1,053,557	\$1,053,557	\$1,048,571	\$0	99.53%
	\$1,053,557	\$1,053,557	\$1,048,571	\$0	99.53%
2.02 OFCI and Other Construction					
UNCOMMITTED	\$10	\$0	\$0	\$0	
E.R.E.S. ENTERPRISES INC DBA ECONOMY RESTAURANT EQUIP	\$49,721	\$49,721	\$49,721	\$0	100.00%
THE DICKLER CORPORATION DBA CHEFS TOYS	\$109,449	\$109,449	\$109,449	\$0	100.00%
	\$159,180	\$159,170	\$159,170	\$0	99.99%
4. Construction Support Costs					
4.01 Rental					
UNCOMMITTED	\$0	\$0	\$0	\$0	
ELITE MODULAR LEASING & SALES INC	\$161,864	\$161,864	\$144,929	\$30,131	89.54%
	\$161,864	\$161,864	\$144,929	\$30,131	89.54%



Measure S Bond Program

Financial Report for July 2021

Budget vs Actuals - By School and Budget Category with Vendor Detail

QSS Data thru 7/31/2021

	Budget	Contracted to Date	Expended to Date	Quarterly Expense Jul '21 - Sep '21	% Expended
4.05 DSA Review Fees	\$0	\$0	\$0	\$0	
UNCOMMITTED	\$0	\$0	\$0	\$0	
DIVISION OF STATE ARCHITECT	\$15,812	\$15,812	\$15,812	\$0	100.00%
	\$15,812	\$15,812	\$15,812	\$0	100.00%
4.06 Postage, Printing & Advertising					
UNCOMMITTED	\$0	\$0	\$0	\$0	
	\$0	\$0	\$0	\$0	
4.07 DSA Inspection (IOR)					
UNCOMMITTED	\$0	\$0	\$0	\$0	
KNOWLAND CONSTRUCTION SERVICES	\$71,104	\$71,104	\$61,688	\$0	86.76%
	\$71,104	\$71,104	\$61,688	\$0	86.76%
4.08 DSA Construction Phase Testing (LOR)					
UNCOMMITTED	\$0	\$0	\$0	\$0	
AMERICAN ENGINEERING LABORATORIES INC	\$17,100	\$17,100	\$9,219	\$0	53.91%
	\$17,100	\$17,100	\$9,219	\$0	53.91%
4.11 Preliminary Testing (Hazmat, Topo, Geo, etc)					
UNCOMMITTED	\$0	\$0	\$0	\$0	
ENVIRONMENTAL NETWORK CORPORATION	\$4,245	\$4,245	\$3,910	\$0	92.10%
	\$4,245	\$4,245	\$3,910	\$0	92.10%
Total 390-9520 Canyon HS Interim Kitchen (DSA 04-118418)	\$1,602,483	\$1,602,473	\$1,454,775	\$30,131	90.78%
390-9520 Canyon HS Phase II Planning and Design					
1. Design Cost					
1.01 Architect					
UNCOMMITTED	\$0	\$0	\$0	\$0	
GKKWORKS CANNON DESIGN	\$663,500	\$663,500	\$406,800	\$0	61.31%
	\$663,500	\$663,500	\$406,800	\$0	61.31%
1.02 AE Design Contingency					
UNCOMMITTED	\$44,000	\$0	\$0	\$0	
GKKWORKS CANNON DESIGN	\$0	\$44,000	\$0	\$0	
	\$44,000	\$44,000	\$0	\$0	0.00%
3. Program and Construction Management					
3.01 Program Management Fees					
UNCOMMITTED	\$182,789	\$0	\$0	\$0	
CUMMING CONSTRUCTION MGMT INC	\$21,240	\$21,240	\$20,832	\$0	98.08%
	\$204,029	\$21,240	\$20,832	\$0	10.21%
3.02 Construction Management Fees					
UNCOMMITTED	\$104,630	\$0	\$0	\$0	



Measure S Bond Program

Financial Report for July 2021

Budget vs Actuals - By School and Budget Category with Vendor Detail

QSS Data thru 7/31/2021

	Budget	Contracted to Date	Expended to Date	Quarterly Expense Jul '21 - Sep '21	% Expended
CORDOBA CORPORATION	\$234,970	\$234,970	\$22,003	\$19,775	9.36%
	\$339,600	\$234,970	\$22,003	\$19,775	6.48%
4. Construction Support Costs					
4.03 Commissioning					
UNCOMMITTED	\$0	\$0	\$0	\$0	
P2S ENGINEERING INC	\$4,329	\$4,329	\$720	\$720	16.63%
	\$4,329	\$4,329	\$720	\$720	16.63%
4.04 Builders Risk Insurance					
UNCOMMITTED	\$0	\$0	\$0	\$0	
	\$0	\$0	\$0	\$0	
4.05 DSA Review Fees					
UNCOMMITTED	\$0	\$0	\$0	\$0	
DIVISION OF STATE ARCHITECT	\$57,640	\$57,640	\$57,640	\$57,640	100.00%
	\$57,640	\$57,640	\$57,640	\$57,640	100.00%
4.06 Postage, Printing & Advertising					
UNCOMMITTED	\$0	\$0	\$0	\$0	
AMERICAN REPROGRAPHICS CO LLC	\$7,500	\$7,500	\$0	\$0	0.00%
	\$7,500	\$7,500	\$0	\$0	0.00%
4.11 Preliminary Testing (Hazmat, Topo, Geo, etc)					
UNCOMMITTED	\$254,336	\$0	\$0	\$0	
ENVIRONMENTAL NETWORK CORPORATION	\$19,515	\$19,515	\$12,220	\$0	62.62%
	\$273,851	\$19,515	\$12,220	\$0	4.46%
Total 390-9520 Canyon HS Phase II Planning and Design	\$1,594,449	\$1,052,694	\$520,215	\$78,135	32.63%
390-TBD Canyon HS Science Center Unallocated Funds F22					
5. Unallocated Bond Funds					
5.04 Unallocated Bond Funds					
UNCOMMITTED	\$703,502	\$0	\$0	\$0	
	\$703,502	\$0	\$0	\$0	0.00%
Total 390-TBD Canyon HS Science Center Unallocated Funds F22	\$703,502	\$0	\$0	\$0	0.00%
390-TBD Canyon HS Unallocated Funds F22					
5. Unallocated Bond Funds					
5.04 Unallocated Bond Funds					
UNCOMMITTED	\$1,737,907	\$0	\$0	\$0	
	\$1,737,907	\$0	\$0	\$0	0.00%
Total 390-TBD Canyon HS Unallocated Funds F22	\$1,737,907	\$0	\$0	\$0	0.00%



Measure S Bond Program

Financial Report for July 2021

Budget vs Actuals - By School and Budget Category with Vendor Detail

QSS Data thru 7/31/2021

	Budget	Contracted to Date	Expended to Date	Quarterly Expense Jul '21 - Sep '21	% Expended
Canyon High School	\$73,266,281	\$51,856,941	\$35,376,259	\$2,948,160	48.28%
El Modena High School					
391-0000 El Modena HS IP Surveillance Camera and Systems					
4. Construction Support Costs					
4.13 FF&E (Laboratory Tables and Chairs, other)					
UNCOMMITTED	\$0	\$0	\$0	\$0	
CDW GOVERNMENT INC (Parts for IP Camera Systems)	\$39,388	\$39,388	\$39,388	\$0	100.00%
DIGITAL NETWORKS GROUP INC (F/I IP Camera Software)	\$11,719	\$11,719	\$11,719	\$0	100.00%
INTER-PACIFIC INC	\$30,073	\$30,073	\$30,073	\$0	100.00%
	\$81,179	\$81,179	\$81,179	\$0	100.00%
Total 391-0000 El Modena HS IP Surveillance Camera and Systems	\$81,179	\$81,179	\$81,179	\$0	100.00%
391-9520 El Modena HS Science Center (DSA 04-117098)					
1. Design Cost					
1.01 Architect					
UNCOMMITTED	\$269,396	\$0	\$0	\$0	
HARLEY ELLIS DEVEREAUX	\$1,954,014	\$1,954,014	\$1,926,048	\$0	98.57%
LIONAKIS	\$14,059	\$14,059	\$14,059	\$0	100.00%
	\$2,237,469	\$1,968,073	\$1,940,107	\$0	86.71%
2. Construction Cost					
2.01 Construction					
UNCOMMITTED	\$0	\$0	\$0	\$0	
ANGELES CONTRACTOR, INC	\$25,936,313	\$25,936,313	\$18,434,422	\$1,122,766	71.08%
	\$25,936,313	\$25,936,313	\$18,434,422	\$1,122,766	71.08%
2.02 OFCI and Other Construction					
UNCOMMITTED	\$12,762	\$0	\$0	\$0	
ACCO ENGINEERED SYSTEMS INC	\$355,544	\$355,544	\$335,681	\$0	94.41%
AMERICAN REPROGRAPHICS CO LLC	\$1,026	\$1,026	\$0	\$0	0.00%
ARROW RESTAURANT EQUIPMENT	\$14,232	\$14,232	\$14,213	\$0	99.87%
CAROLINA BIOLOGICAL SUPPLY	\$24,213	\$24,213	\$0	\$0	0.00%
DEVELOPMENT GROUP INC	\$52,939	\$52,939	\$52,355	\$0	98.90%
FAIR PLAY SCOREBOARDS	\$17,694	\$17,694	\$17,694	\$0	100.00%
FISHER SCIENCE EDUCATION	\$26,188	\$26,188	\$21,027	\$0	80.29%
FLINN SCIENTIFIC INC	\$12,364	\$12,364	\$0	\$0	0.00%
PROFESSIONAL TURF SPECIALTIES	\$23,460	\$23,460	\$23,460	\$0	100.00%
WW GRAINGER INC	\$6,039	\$6,039	\$2,187	\$0	36.21%
	\$546,461	\$533,699	\$466,617	\$0	85.39%



Measure S Bond Program

Financial Report for July 2021

Budget vs Actuals - By School and Budget Category with Vendor Detail

QSS Data thru 7/31/2021

	Budget	Contracted to Date	Expended to Date	Quarterly Expense Jul '21 - Sep '21	% Expended
3. Program and Construction Management					
3.01 Program Management Fees					
UNCOMMITTED	\$132,137	\$0	\$0	\$0	
CUMMING CONSTRUCTION MGMT INC	\$871,689	\$967,124	\$774,615	\$0	88.86%
	\$1,003,826	\$967,124	\$774,615	\$0	77.17%
3.02 Construction Management Fees					
UNCOMMITTED	\$401	\$0	\$0	\$0	
ARCADIS U.S. INC	\$2,288,659	\$2,288,659	\$2,159,149	\$142,150	94.34%
CORDOBA CORPORATION	\$90,336	\$90,336	\$90,336	\$0	100.00%
	\$2,379,396	\$2,378,995	\$2,249,485	\$142,150	94.54%
4. Construction Support Costs					
4.01 Rental					
UNCOMMITTED	\$0	\$0	\$0	\$0	
	\$0	\$0	\$0	\$0	
4.02 Title, Environmental, Stormwater Management					
UNCOMMITTED	\$25,259	\$0	\$0	\$0	
CHICAGO TITLE COMPANY	\$1,500	\$1,500	\$1,500	\$0	100.00%
CITY OF ORANGE (PUBLIC WORKS)	\$71	\$71	\$71	\$0	100.00%
CITY OF ORANGE (WATER DIVISION)	\$16,048	\$16,048	\$10,942	\$0	68.18%
ENVIRONMENTAL AUDIT INC	\$10,950	\$10,950	\$8,548	\$0	78.06%
OUSD COST OF INTEREST DISTRIBUTION	\$1	\$1	\$1	\$0	100.00%
	\$53,829	\$28,570	\$21,061	\$0	39.13%
4.03 Commissioning					
UNCOMMITTED	\$6,112	\$0	\$0	\$0	
P2S ENGINEERING INC	\$30,558	\$30,558	\$27,601	\$0	90.32%
	\$36,670	\$30,558	\$27,601	\$0	75.27%
4.04 Builders Risk Insurance					
UNCOMMITTED	\$0	\$0	\$0	\$0	
	\$0	\$0	\$0	\$0	
4.05 DSA Review Fees					
UNCOMMITTED	\$0	\$0	\$0	\$0	
DIVISION OF STATE ARCHITECT	\$306,338	\$306,338	\$306,338	\$0	100.00%
	\$306,338	\$306,338	\$306,338	\$0	100.00%
4.06 Postage, Printing & Advertising					
UNCOMMITTED	\$7,496	\$0	\$0	\$0	
AMERICAN REPROGRAPHICS CO LLC	\$22,562	\$22,562	\$19,155	\$0	84.90%
SOUTHERN CALIFORNIA NEWS GROUP	\$2,024	\$2,024	\$2,024	\$0	100.00%
	\$32,082	\$24,585	\$21,179	\$0	66.02%
4.07 DSA Inspection (IOR)					



Measure S Bond Program

Financial Report for July 2021

Budget vs Actuals - By School and Budget Category with Vendor Detail

QSS Data thru 7/31/2021

	Budget	Contracted to Date	Expended to Date	Quarterly Expense Jul '21 - Sep '21	% Expended
UNCOMMITTED	\$35,720	\$0	\$0	\$0	
BPI INSPECTION SERVICE	\$521,099	\$521,099	\$483,624	\$145,670	92.81%
	\$556,819	\$521,099	\$483,624	\$145,670	86.85%
4.08 DSA Construction Phase Testing (LOR)					
UNCOMMITTED	\$0	\$0	\$0	\$0	
KOURY ENGINEERING & TESTING INC (Geotechnical Engineering)	\$777,886	\$777,886	\$710,915	\$13,968	91.39%
	\$777,886	\$777,886	\$710,915	\$13,968	91.39%
4.09 Relocation					
UNCOMMITTED	\$15,740	\$0	\$0	\$0	
Beltmann Group, Inc.	\$7,080	\$7,080	\$850	\$0	12.01%
ULINE INC	\$2,180	\$2,180	\$701	\$0	32.17%
	\$25,000	\$9,260	\$1,551	\$0	6.21%
4.10 Labor Compliance					
UNCOMMITTED	\$0	\$0	\$0	\$0	
	\$0	\$0	\$0	\$0	
4.11 Preliminary Testing (Hazmat, Topo, Geo, etc)					
UNCOMMITTED	\$13,619	\$0	\$0	\$0	
ALLEGIAN FIRE PROTECTION INC	\$525	\$525	\$525	\$0	100.00%
CALIFORNIA GEOLOGICAL SURVEY (Geology and Seismology Review)	\$3,600	\$3,600	\$3,600	\$0	100.00%
ENVIRONMENTAL NETWORK CORPORATION	\$6,000	\$6,000	\$5,410	\$0	90.17%
HARLEY ELLIS DEVEREAUX	\$14,908	\$14,908	\$14,908	\$0	100.00%
NINYO & MOORE	\$29,981	\$29,981	\$29,771	\$0	99.30%
PCA ARBORISTS & CONSULTANTS INC	\$1,569	\$1,569	\$1,569	\$0	100.00%
THE CONVERSE PROFESSIONAL GROUP (Soils Investigation)	\$30,640	\$30,640	\$30,640	\$0	100.00%
	\$100,842	\$87,223	\$86,423	\$0	85.70%
4.12 Utility Connection Fees (Local Permits)					
UNCOMMITTED	\$75,949	\$0	\$0	\$0	
DIVISION OF STATE ARCHITECT	\$312	\$312	\$312	\$0	100.00%
SOUTHERN CALIFORNIA EDISON	\$3,665	\$3,665	\$3,665	\$0	100.00%
STATE WATER RESOURCES CONTROL BOARD (SWRCB)	\$993	\$993	\$993	\$0	100.00%
	\$80,919	\$4,970	\$4,970	\$0	6.14%
4.13 FF&E (Laboratory Tables and Chairs, other)					
UNCOMMITTED	\$37,999	\$0	\$0	\$0	
CDW GOVERNMENT INC (Parts for IP Camera Systems)	\$59,662	\$69,999	\$0	\$0	0.00%
INTER-PACIFIC INC	\$9,256	\$9,256	\$9,256	\$0	100.00%
SIERRA SCHOOL EQUIPMENT COMPANY	\$495,446	\$495,446	\$85,556	\$0	17.27%
TURTLE STORAGE dba AMERICAN BICYCLE CO	\$6,871	\$6,871	\$0	\$0	0.00%
VWR INTERNATIONAL LLC	\$47,922	\$52,714	\$47,922	\$39,049	100.00%
	\$657,156	\$634,286	\$142,733	\$39,049	21.72%
4.14 Legal Counsel					



Measure S Bond Program

Financial Report for July 2021

Budget vs Actuals - By School and Budget Category with Vendor Detail

QSS Data thru 7/31/2021

	Budget	Contracted to Date	Expended to Date	Quarterly Expense Jul '21 - Sep '21	% Expended
UNCOMMITTED	\$0	\$0	\$0	\$0	
	\$0	\$0	\$0	\$0	
4.15 Miscellaneous Fees					
UNCOMMITTED	\$0	\$0	\$0	\$0	
	\$0	\$0	\$0	\$0	
5. Contingency					
5.01 Construction Contingency					
UNCOMMITTED	\$1,833,162	\$0	\$0	\$0	
	\$1,833,162	\$0	\$0	\$0	0.00%
5.02 Project Contingency					
UNCOMMITTED	\$1,640,380	\$0	\$0	\$0	
ARCADIS U.S. INC	\$0	\$0	\$0	\$0	
	\$1,640,380	\$0	\$0	\$0	0.00%
Total 391-9520 El Modena HS Science Center (DSA 04-117098)	\$38,204,547	\$34,208,979	\$25,671,641	\$1,463,603	67.20%
391-9520 El Modena HS Phase II Planning and Design					
1. Design Cost					
1.01 Architect					
UNCOMMITTED	\$624	\$0	\$0	\$0	
HARLEY ELLIS DEVEREAUX	\$1,864,560	\$1,864,560	\$1,305,110	\$56,353	70.00%
	\$1,865,184	\$1,864,560	\$1,305,110	\$56,353	69.97%
3. Program and Construction Management					
3.01 Program Management Fees					
UNCOMMITTED	\$86,419	\$0	\$0	\$0	
CUMMING CONSTRUCTION MGMT INC	\$59,661	\$59,661	\$58,517	\$0	98.08%
	\$146,080	\$59,661	\$58,517	\$0	40.06%
3.02 Construction Management Fees					
UNCOMMITTED	\$0	\$0	\$0	\$0	
CORDOBA CORPORATION	\$301,850	\$301,850	\$53,715	\$2,013	17.80%
	\$301,850	\$301,850	\$53,715	\$2,013	17.80%
4. Construction Support Costs					
4.03 Commissioning					
UNCOMMITTED	\$0	\$0	\$0	\$0	
P2S ENGINEERING INC	\$11,890	\$11,890	\$2,220	\$2,220	18.67%
	\$11,890	\$11,890	\$2,220	\$2,220	18.67%
4.05 DSA Review Fees					
UNCOMMITTED	\$0	\$0	\$0	\$0	



Measure S Bond Program

Financial Report for July 2021

Budget vs Actuals - By School and Budget Category with Vendor Detail

QSS Data thru 7/31/2021

	Budget	Contracted to Date	Expended to Date	Quarterly Expense Jul '21 - Sep '21	% Expended
DIVISION OF STATE ARCHITECT	\$212,750	\$212,750	\$212,750	\$0	100.00%
	\$212,750	\$212,750	\$212,750	\$0	100.00%
4.06 Postage, Printing & Advertising					
UNCOMMITTED	\$0	\$0	\$0	\$0	
AMERICAN REPROGRAPHICS CO LLC	\$8,000	\$8,000	\$0	\$0	0.00%
	\$8,000	\$8,000	\$0	\$0	0.00%
4.11 Preliminary Testing (Hazmat, Topo, Geo, etc)					
UNCOMMITTED	\$15,000	\$0	\$0	\$0	
ARMSTRONG & BROOKS CONSULTING ENG	\$20,000	\$20,000	\$4,940	\$0	24.70%
GROUP DELTA CONSULTANTS INC	\$17,100	\$17,100	\$10,004	\$0	58.50%
KOURY ENGINEERING & TESTING INC (Geotechnical Engineering)	\$22,350	\$22,350	\$22,350	\$0	100.00%
	\$74,450	\$59,450	\$37,294	\$0	50.09%
Total 391-9520 El Modena HS Phase II Planning and Design	\$2,620,204	\$2,518,161	\$1,669,606	\$60,586	63.72%
391-9520 El Modena HS Quad Shade Structures (DSA 04-119124)					
1. Design Cost					
1.01 Architect					
UNCOMMITTED	\$0	\$0	\$0	\$0	
HARLEY ELLIS DEVEREAUX	\$79,340	\$79,340	\$0	\$0	0.00%
	\$79,340	\$79,340	\$0	\$0	0.00%
4. Construction Support Costs					
4.02 Title, Environmental, Stormwater Management					
UNCOMMITTED	\$0	\$0	\$0	\$0	
	\$0	\$0	\$0	\$0	
4.05 DSA Review Fees					
UNCOMMITTED	\$0	\$0	\$0	\$0	
DIVISION OF STATE ARCHITECT	\$9,650	\$9,650	\$9,650	\$0	100.00%
	\$9,650	\$9,650	\$9,650	\$0	100.00%
4.06 Postage, Printing & Advertising					
UNCOMMITTED	\$0	\$0	\$0	\$0	
AMERICAN REPROGRAPHICS CO LLC	\$86	\$86	\$86	\$0	100.00%
	\$86	\$86	\$86	\$0	100.00%
5. Contingency					
5.01 Construction Contingency					
UNCOMMITTED	\$600,000	\$0	\$0	\$0	
	\$600,000	\$0	\$0	\$0	0.00%
Total 391-9520 El Modena HS Quad Shade Structures (DSA 04-119124)	\$689,076	\$89,076	\$9,736	\$0	1.41%



Measure S Bond Program

Financial Report for July 2021

Budget vs Actuals - By School and Budget Category with Vendor Detail

QSS Data thru 7/31/2021

	Budget	Contracted to Date	Expended to Date	Quarterly Expense Jul '21 - Sep '21	% Expended
391-TBD El Modena HS Science Center Unallocated Funds F22					
5. Unallocated Bond Funds					
5.04 Unallocated Bond Funds					
UNCOMMITTED	\$1,138,078	\$0	\$0	\$0	
	\$1,138,078	\$0	\$0	\$0	0.00%
Total 391-TBD El Modena HS Science Center Unallocated Funds F22	\$1,138,078	\$0	\$0	\$0	0.00%
391-9520 El Modena HS Unallocated Funds F21					
4. Construction Support Costs					
4.15 Miscellaneous Fees					
UNCOMMITTED	\$0	\$0	\$0	\$0	
OUSD COST OF INTEREST DISTRIBUTION	\$22,550	\$22,550	\$22,550	\$0	100.00%
	\$22,550	\$22,550	\$22,550	\$0	100.00%
5. Program Reserve					
5.03 Interest Earned - Reserve					
UNCOMMITTED	\$0	\$0	\$0	\$0	
	\$0	\$0	\$0	\$0	
Total 391-9520 El Modena HS Unallocated Funds F21	\$22,550	\$22,550	\$22,550	\$0	100.00%
391-TBD El Modena HS Unallocated Funds F22					
5. Unallocated Bond Funds					
5.04 Unallocated Bond Funds					
UNCOMMITTED	\$30,017,362	\$0	\$0	\$0	
	\$30,017,362	\$0	\$0	\$0	0.00%
Total 391-TBD El Modena HS Unallocated Funds F22	\$30,017,362	\$0	\$0	\$0	0.00%
El Modena High School	\$72,772,997	\$36,919,946	\$27,454,712	\$1,524,188	37.73%
Orange High School					
392-0000 Orange HS IP Surveillance Camera and Systems					
4. Construction Support Costs					
4.13 FF&E (Laboratory Tables and Chairs, other)					
UNCOMMITTED	\$0	\$0	\$0	\$0	
CDW GOVERNMENT INC (Parts for IP Camera Systems)	\$53,662	\$53,662	\$53,662	\$0	100.00%
DIGITAL NETWORKS GROUP INC (F/I IP Camera Software)	\$13,569	\$13,569	\$13,569	\$0	100.00%
INTER-PACIFIC INC	\$34,837	\$34,837	\$34,837	\$0	100.00%



Measure S Bond Program

Financial Report for July 2021

Budget vs Actuals - By School and Budget Category with Vendor Detail

QSS Data thru 7/31/2021

	Budget	Contracted to Date	Expended to Date	Quarterly Expense Jul '21 - Sep '21	% Expended
	\$102,068	\$102,068	\$102,068	\$0	100.00%
Total 392-0000 Orange HS IP Surveillance Camera and Systems	\$102,068	\$102,068	\$102,068	\$0	100.00%
392-9520 Orange HS Science Bldg (DSA 04-116859)					
1. Design Cost					
1.01 Architect					
UNCOMMITTED	\$151,933	\$0	\$0	\$0	
LIONAKIS	\$1,854,196	\$1,854,196	\$1,822,674	\$1,150	98.30%
	\$2,006,129	\$1,854,196	\$1,822,674	\$1,150	90.86%
2. Construction Cost					
2.01 Construction					
UNCOMMITTED	\$1	\$0	\$0	\$0	
GIANNELLI ELECTRIC INC	\$14,878	\$14,878	\$14,878	\$0	100.00%
INTEGRATED DEMOLITION AND REMEDIATION (Abatement and Demolition)	\$44,800	\$44,800	\$44,800	\$0	100.00%
J & A FENCE (Custodial Storage Fencing)	\$0	\$0	\$0	\$0	
KYA SERVICES LLC (Install Carpet)	\$0	\$0	\$0	\$0	
OLES, KEITH (Termite Services)	\$0	\$0	\$0	\$0	
PINNER CONSTRUCTION	\$27,190,987	\$27,190,987	\$27,190,987	\$23,485	100.00%
SOUTHERN CALIFORNIA NEWS GROUP	\$0	\$0	\$0	\$0	
TIME & ALARM SYSTEMS	\$3,100	\$3,100	\$3,100	\$0	100.00%
UNIVERSAL ASPHALT CO (Remove and Patch Asphalt)	\$6,830	\$6,830	\$6,830	\$0	100.00%
	\$27,260,596	\$27,260,595	\$27,260,595	\$23,485	100.00%
2.02 OFCI and Other Construction					
UNCOMMITTED	\$69,720	\$0	\$0	\$0	
ACCO ENGINEERED SYSTEMS INC	\$62,883	\$62,883	\$62,883	\$0	100.00%
AMERICAN REPROGRAPHICS CO LLC	\$1,026	\$1,026	\$0	\$0	0.00%
ARROW RESTAURANT EQUIPMENT	\$13,556	\$13,556	\$13,432	\$0	99.08%
CAROLINA BIOLOGICAL SUPPLY	\$16,559	\$16,559	\$16,480	\$0	99.52%
CITY OF ORANGE (PUBLIC WORKS)	\$2,000	\$2,000	\$2,000	\$0	100.00%
DEVELOPMENT GROUP INC	\$37,866	\$37,866	\$37,866	\$0	100.00%
FISHER SCIENCE EDUCATION	\$25,736	\$25,736	\$24,863	\$6,463	96.61%
FLINN SCIENTIFIC INC	\$10,263	\$10,263	\$10,263	\$0	100.00%
GIANNELLI ELECTRIC INC	\$24,684	\$24,684	\$24,684	\$0	100.00%
GRUETT TREE CO INC (Removal of Trees)	\$7,625	\$7,625	\$7,625	\$0	100.00%
J & A FENCE (Custodial Storage Fencing)	\$6,885	\$6,885	\$6,885	\$0	100.00%
KYA SERVICES LLC (Install Carpet)	\$0	\$0	\$0	\$0	
OLES, KEITH (Termite Services)	\$1,500	\$1,500	\$1,500	\$0	100.00%
SOUTHERN CALIFORNIA NEWS GROUP	\$0	\$0	\$0	\$0	



Measure S Bond Program

Financial Report for July 2021

Budget vs Actuals - By School and Budget Category with Vendor Detail

QSS Data thru 7/31/2021

	Budget	Contracted to Date	Expended to Date	Quarterly Expense Jul '21 - Sep '21	% Expended
TRIMARK RAYGAL LLC	\$0	\$0	\$0	\$0	
VORTEX INDUSTRIES, INC.	\$6,804	\$6,804	\$6,804	\$0	100.00%
WW GRAINGER INC	\$2,292	\$2,292	\$2,292	\$0	100.00%
	\$289,399	\$219,679	\$217,576	\$6,463	75.18%
3. Program and Construction Management					
3.01 Program Management Fees					
UNCOMMITTED	\$423,420	\$0	\$0	\$0	
CUMMING CONSTRUCTION MGMT INC	\$1,118,330	\$1,170,512	\$900,944	\$0	80.56%
	\$1,541,750	\$1,170,512	\$900,944	\$0	58.44%
3.02 Construction Management Fees					
UNCOMMITTED	\$59,981	\$0	\$0	\$0	
BALFOUR BEATTY CONSTRUCTION	\$1,757,253	\$1,757,254	\$1,755,159	\$0	99.88%
CORDOBA CORPORATION	\$86,549	\$86,549	\$86,434	\$0	99.87%
	\$1,903,783	\$1,843,803	\$1,841,593	\$0	96.73%
4. Construction Support Costs					
4.01 Rental					
UNCOMMITTED	\$0	\$0	\$0	\$0	
	\$0	\$0	\$0	\$0	
4.02 Title, Environmental, Stormwater Management					
UNCOMMITTED	\$47,386	\$0	\$0	\$0	
CHICAGO TITLE COMPANY	\$1,500	\$1,500	\$1,500	\$0	100.00%
OUSD COST OF INTEREST DISTRIBUTION	\$1	\$1	\$1	\$0	100.00%
PLACEWORKS INC	\$52,231	\$52,231	\$52,231	\$0	100.00%
STATE WATER RESOURCES CONTROL BOARD (SWRCB)	\$726	\$726	\$726	\$0	100.00%
	\$101,844	\$54,458	\$54,458	\$0	53.47%
4.03 Commissioning					
UNCOMMITTED	\$6,117	\$0	\$0	\$0	
P2S ENGINEERING INC	\$30,585	\$30,585	\$30,170	\$0	98.64%
	\$36,702	\$30,585	\$30,170	\$0	82.20%
4.04 Builders Risk Insurance					
UNCOMMITTED	\$0	\$0	\$0	\$0	
	\$0	\$0	\$0	\$0	
4.05 DSA Review Fees					
UNCOMMITTED	\$28,992	\$0	\$0	\$0	
DIVISION OF STATE ARCHITECT	\$342,871	\$342,871	\$342,871	\$90,121	100.00%
OUSD REVOLVING CASH	\$500	\$500	\$500	\$0	100.00%
	\$372,364	\$343,371	\$343,371	\$90,121	92.21%
4.06 Postage, Printing & Advertising					
UNCOMMITTED	\$33,302	\$0	\$0	\$0	



Measure S Bond Program

Financial Report for July 2021

Budget vs Actuals - By School and Budget Category with Vendor Detail

QSS Data thru 7/31/2021

	Budget	Contracted to Date	Expended to Date	Quarterly Expense Jul '21 - Sep '21	% Expended
AMERICAN REPROGRAPHICS CO LLC	\$14,807	\$14,807	\$8,734	\$0	58.99%
SOUTHERN CALIFORNIA NEWS GROUP	\$8,518	\$8,518	\$8,518	\$0	100.00%
	\$56,626	\$23,325	\$17,252	\$0	30.47%
4.07 DSA Inspection (IOR)					
UNCOMMITTED	\$145,585	\$0	\$0	\$0	
KNOWLAND CONSTRUCTION SERVICES	\$321,507	\$321,507	\$286,404	\$0	89.08%
	\$467,092	\$321,507	\$286,404	\$0	61.32%
4.08 DSA Construction Phase Testing (LOR)					
UNCOMMITTED	\$125,025	\$0	\$0	\$0	
NINYO & MOORE	\$327,624	\$327,624	\$227,848	\$4,904	69.55%
	\$452,649	\$327,624	\$227,848	\$4,904	50.34%
4.09 Relocation					
UNCOMMITTED	\$15,671	\$0	\$0	\$0	
Beltmann Group, Inc.	\$6,229	\$6,229	\$4,876	\$0	78.27%
ULINE INC	\$3,100	\$3,100	\$3,065	\$0	98.86%
	\$25,000	\$9,329	\$7,941	\$0	31.76%
4.10 Labor Compliance					
UNCOMMITTED	\$40,951	\$0	\$0	\$0	
	\$40,951	\$0	\$0	\$0	0.00%
4.11 Preliminary Testing (Hazmat, Topo, Geo, etc)					
UNCOMMITTED	\$198,437	\$0	\$0	\$0	
CALIFORNIA GEOLOGICAL SURVEY (Geology and Seismology Review)	\$3,600	\$3,600	\$3,600	\$0	100.00%
ENVIRONMENTAL NETWORK CORPORATION	\$4,925	\$4,925	\$2,590	\$0	52.59%
KOURY ENGINEERING & TESTING INC (Geotechnical Engineering)	\$13,300	\$13,300	\$13,300	\$0	100.00%
PENCO ENGINEERING INC (Topographical Survey Services)	\$42,350	\$42,350	\$41,070	\$0	96.98%
RMA GROUP (dba SITESCAN)	\$49,533	\$49,533	\$49,533	\$0	100.00%
	\$312,145	\$113,708	\$110,093	\$0	35.27%
4.12 Utility Connection Fees (Local Permits)					
UNCOMMITTED	\$151,714	\$0	\$0	\$0	
CITY OF ORANGE (PUBLIC WORKS)	\$2,500	\$2,500	\$2,500	\$0	100.00%
SOUTHERN CALIFORNIA EDISON	\$6,912	\$6,912	\$6,912	\$0	100.00%
SOUTHERN CALIFORNIA GAS CO	\$2,124	\$2,124	\$2,124	\$0	100.00%
STATE WATER RESOURCES CONTROL BOARD (SWRCB)	\$553	\$553	\$553	\$0	100.00%
	\$163,803	\$12,089	\$12,089	\$0	7.38%
4.13 FF&E (Laboratory Tables and Chairs, other)					
UNCOMMITTED	\$10,748	\$0	\$0	\$0	
CDW GOVERNMENT INC (Parts for IP Camera Systems)	\$59,662	\$59,662	\$59,658	\$0	99.99%
CONEXWEST	\$9,466	\$9,466	\$9,419	\$0	99.51%
CP PRODUCTS INC	\$4,834	\$4,834	\$4,834	\$0	100.00%
DEVELOPMENT GROUP INC	\$0	\$0	\$0	\$0	



Measure S Bond Program

Financial Report for July 2021

Budget vs Actuals - By School and Budget Category with Vendor Detail

QSS Data thru 7/31/2021

	Budget	Contracted to Date	Expended to Date	Quarterly Expense Jul '21 - Sep '21	% Expended
FISHER SCIENCE EDUCATION	\$0	\$0	\$0	\$0	
GORM	\$11,423	\$11,423	\$11,415	\$4,173	99.93%
HILLYARD INC	\$32,572	\$32,572	\$32,572	\$0	100.00%
INTER-PACIFIC INC	\$7,904	\$7,904	\$7,904	\$0	100.00%
PSI DBA WATER VISIONS INC	\$8,527	\$8,527	\$8,527	\$0	100.00%
SIERRA SCHOOL EQUIPMENT COMPANY	\$464,248	\$464,248	\$464,248	\$0	100.00%
TURTLE STORAGE dba AMERICAN BICYCLE CO	\$6,871	\$6,871	\$6,537	\$0	95.14%
VORTEX INDUSTRIES, INC.	\$0	\$0	\$0	\$0	
VWR INTERNATIONAL LLC	\$34,314	\$34,314	\$34,314	\$0	100.00%
	\$650,570	\$639,821	\$639,428	\$4,173	98.29%
4.14 Legal Counsel					
UNCOMMITTED	\$81,902	\$0	\$0	\$0	
	\$81,902	\$0	\$0	\$0	0.00%
4.15 Miscellaneous Fees					
UNCOMMITTED	\$0	\$0	\$0	\$0	
	\$0	\$0	\$0	\$0	
5. Contingency					
5.01 Construction Contingency					
UNCOMMITTED	\$1,415,413	\$0	\$0	\$0	
	\$1,415,413	\$0	\$0	\$0	0.00%
5.02 Project Contingency					
UNCOMMITTED	\$4,690,464	\$0	\$0	\$0	
	\$4,690,464	\$0	\$0	\$0	0.00%
Total 392-9520 Orange HS Science Bldg (DSA 04-116859)	\$41,869,182	\$34,224,601	\$33,772,435	\$130,296	80.66%
392-9520 Orange HS Shade Structure (DSA 04-118351)					
1. Design Cost					
1.01 Architect					
UNCOMMITTED	\$0	\$0	\$0	\$0	
LIONAKIS	\$17,317	\$17,317	\$17,317	\$0	100.00%
	\$17,317	\$17,317	\$17,317	\$0	100.00%
2. Construction Cost					
2.01 Construction					
UNCOMMITTED	\$0	\$0	\$0	\$0	
PINNER CONSTRUCTION	\$113,500	\$113,500	\$113,500	\$0	100.00%
	\$113,500	\$113,500	\$113,500	\$0	100.00%
3. Program and Construction Management					



Measure S Bond Program
Financial Report for July 2021
Budget vs Actuals - By School and Budget Category with Vendor Detail

QSS Data thru 7/31/2021

	Budget	Contracted to Date	Expended to Date	Quarterly Expense Jul '21 - Sep '21	% Expended
3.01 Program Management Fees					
UNCOMMITTED	\$0	\$0	\$0	\$0	
CUMMING CONSTRUCTION MGMT INC	\$1,838	\$1,838	\$1,838	\$0	100.00%
	\$1,838	\$1,838	\$1,838	\$0	100.00%
3.02 Construction Management Fees					
UNCOMMITTED	\$0	\$0	\$0	\$0	
BALFOUR BEATTY CONSTRUCTION	\$5,956	\$5,956	\$5,956	\$0	100.00%
	\$5,956	\$5,956	\$5,956	\$0	100.00%
4. Construction Support Costs					
4.05 DSA Review Fees					
UNCOMMITTED	\$0	\$0	\$0	\$0	
DIVISION OF STATE ARCHITECT	\$1,873	\$1,873	\$1,873	\$0	100.00%
	\$1,873	\$1,873	\$1,873	\$0	100.00%
4.06 Postage, Printing & Advertising					
UNCOMMITTED	\$0	\$0	\$0	\$0	
	\$0	\$0	\$0	\$0	
4.07 DSA Inspection (IOR)					
UNCOMMITTED	\$0	\$0	\$0	\$0	
KNOWLAND CONSTRUCTION SERVICES	\$1,740	\$1,740	\$1,740	\$0	100.00%
	\$1,740	\$1,740	\$1,740	\$0	100.00%
4.08 DSA Construction Phase Testing (LOR)					
UNCOMMITTED	\$0	\$0	\$0	\$0	
NINYO & MOORE	\$7,408	\$7,408	\$7,408	\$0	100.00%
	\$7,408	\$7,408	\$7,408	\$0	100.00%
Total 392-9520 Orange HS Shade Structure (DSA 04-118351)	\$149,631	\$149,631	\$149,631	\$0	100.00%
392-9520 Orange HS Site Improvements (DSA 04-116673)					
1. Design Cost					
1.01 Architect					
UNCOMMITTED	\$0	\$0	\$0	\$0	
LIONAKIS	\$450,189	\$450,189	\$446,286	\$0	99.13%
SILVER CREEK INDUSTRIES INC (Engineering for Warming Kitchen Relocatable Building)	\$29,682	\$29,682	\$29,682	\$0	100.00%
	\$479,871	\$479,871	\$475,968	\$0	99.19%
2. Construction Cost					
2.01 Construction					
UNCOMMITTED	\$0	\$0	\$0	\$0	
KYA SERVICES LLC (Install Carpet)	\$20,824	\$20,824	\$9,564	\$0	45.93%



Measure S Bond Program

Financial Report for July 2021

Budget vs Actuals - By School and Budget Category with Vendor Detail

QSS Data thru 7/31/2021

	Budget	Contracted to Date	Expended to Date	Quarterly Expense Jul '21 - Sep '21	% Expended
SWINERTON BUILDERS	\$6,556,428	\$6,556,428	\$6,556,428	\$0	100.00%
TRIMARK RAYGAL LLC	\$89,860	\$89,860	\$89,860	\$0	100.00%
	\$6,667,112	\$6,667,112	\$6,655,852	\$0	99.83%
2.02 OFCI and Other Construction					
UNCOMMITTED	\$0	\$0	\$0	\$0	
ACCO ENGINEERED SYSTEMS INC	\$209,074	\$209,074	\$209,074	\$0	100.00%
	\$209,074	\$209,074	\$209,074	\$0	100.00%
3. Program and Construction Management					
3.01 Program Management Fees					
UNCOMMITTED	\$0	\$0	\$0	\$0	
BALFOUR BEATTY CONSTRUCTION	\$0	\$0	\$0	\$0	
CUMMING CONSTRUCTION MGMT INC	\$115,479	\$115,479	\$115,479	\$0	100.00%
	\$115,479	\$115,479	\$115,479	\$0	100.00%
3.02 Construction Management Fees					
UNCOMMITTED	\$0	\$0	\$0	\$0	
BALFOUR BEATTY CONSTRUCTION	\$296,554	\$296,554	\$296,554	\$0	100.00%
	\$296,554	\$296,554	\$296,554	\$0	100.00%
4. Construction Support Costs					
4.02 Title, Environmental, Stormwater Management					
UNCOMMITTED	\$0	\$0	\$0	\$0	
ORANGE COUNTY HEALTH CARE AGENCY	\$1,470	\$1,470	\$1,470	\$0	100.00%
	\$1,470	\$1,470	\$1,470	\$0	100.00%
4.03 Commissioning					
UNCOMMITTED	\$0	\$0	\$0	\$0	
P2S ENGINEERING INC	\$4,755	\$4,755	\$4,667	\$0	98.15%
	\$4,755	\$4,755	\$4,667	\$0	98.15%
4.05 DSA Review Fees					
UNCOMMITTED	\$3,853	\$0	\$0	\$0	
DIVISION OF STATE ARCHITECT	\$94,585	\$94,585	\$94,585	\$0	100.00%
	\$98,438	\$94,585	\$94,585	\$0	96.09%
4.06 Postage, Printing & Advertising					
UNCOMMITTED	\$1	\$0	\$0	\$0	
AMERICAN REPROGRAPHICS CO LLC	\$7,630	\$7,630	\$7,630	\$0	100.00%
SOUTHERN CALIFORNIA NEWS GROUP	\$1,264	\$1,264	\$1,264	\$0	100.00%
	\$8,895	\$8,894	\$8,894	\$0	99.99%
4.07 DSA Inspection (IOR)					
UNCOMMITTED	\$0	\$0	\$0	\$0	
KNOWLAND CONSTRUCTION SERVICES	\$104,480	\$104,480	\$96,985	\$0	92.83%
	\$104,480	\$104,480	\$96,985	\$0	92.83%



Measure S Bond Program
Financial Report for July 2021
Budget vs Actuals - By School and Budget Category with Vendor Detail

QSS Data thru 7/31/2021

	Budget	Contracted to Date	Expended to Date	Quarterly Expense Jul '21 - Sep '21	% Expended
4.08 DSA Construction Phase Testing (LOR)					
UNCOMMITTED	\$0	\$0	\$0	\$0	
NINYO & MOORE	\$113,255	\$113,255	\$112,544	\$0	99.37%
	\$113,255	\$113,255	\$112,544	\$0	99.37%
4.11 Preliminary Testing (Hazmat, Topo, Geo, etc)					
UNCOMMITTED	\$0	\$0	\$0	\$0	
ENVIRONMENTAL NETWORK CORPORATION	\$9,100	\$9,100	\$9,012	\$0	99.03%
	\$9,100	\$9,100	\$9,012	\$0	99.03%
Total 392-9520 Orange HS Site Improvements (DSA 04-116673)	\$8,108,482	\$8,104,629	\$8,081,083	\$0	99.66%
392-9520 Orange HS Phase II Planning and Design					
1. Design Cost					
1.01 Architect					
UNCOMMITTED	\$121,050	\$0	\$0	\$0	
LIONAKIS	\$1,409,450	\$1,409,450	\$879,615	\$46,562	62.41%
	\$1,530,500	\$1,409,450	\$879,615	\$46,562	57.47%
3. Program and Construction Management					
3.01 Program Management Fees					
UNCOMMITTED	\$1	\$0	\$0	\$0	
CUMMING CONSTRUCTION MGMT INC	\$49,836	\$49,836	\$48,880	\$0	98.08%
	\$49,837	\$49,836	\$48,880	\$0	98.08%
3.02 Construction Management Fees					
UNCOMMITTED	\$2,100	\$0	\$0	\$0	
CORDOBA CORPORATION	\$369,950	\$369,950	\$49,728	\$46,013	13.44%
	\$372,050	\$369,950	\$49,728	\$46,013	13.37%
4. Construction Support Costs					
4.03 Commissioning					
UNCOMMITTED	\$0	\$0	\$0	\$0	
P2S ENGINEERING INC	\$4,801	\$4,801	\$410	\$410	8.54%
	\$4,801	\$4,801	\$410	\$410	8.54%
4.04 Builders Risk Insurance					
UNCOMMITTED	\$0	\$0	\$0	\$0	
	\$0	\$0	\$0	\$0	
4.05 DSA Review Fees					
UNCOMMITTED	\$0	\$0	\$0	\$0	
DIVISION OF STATE ARCHITECT	\$153,550	\$153,550	\$153,550	\$0	100.00%
	\$153,550	\$153,550	\$153,550	\$0	100.00%
4.06 Postage, Printing & Advertising					



Measure S Bond Program

Financial Report for July 2021

Budget vs Actuals - By School and Budget Category with Vendor Detail

QSS Data thru 7/31/2021

	Budget	Contracted to Date	Expended to Date	Quarterly Expense Jul '21 - Sep '21	% Expended
UNCOMMITTED	\$0	\$0	\$0	\$0	
AMERICAN REPROGRAPHICS CO LLC	\$14,000	\$14,000	\$0	\$0	0.00%
	\$14,000	\$14,000	\$0	\$0	0.00%
4.11 Preliminary Testing (Hazmat, Topo, Geo, etc)					
UNCOMMITTED	\$59,940	\$0	\$0	\$0	
CANNON CORPORATION	\$50,000	\$50,000	\$35,076	\$0	70.15%
ENVIRONMENTAL NETWORK CORPORATION	\$15,380	\$15,380	\$6,350	\$0	41.29%
NINYO & MOORE	\$20,955	\$20,955	\$20,955	\$0	100.00%
	\$146,275	\$86,335	\$62,381	\$0	42.65%
Total 392-9520 Orange HS Phase II Planning and Design	\$2,271,013	\$2,087,922	\$1,194,563	\$92,984	52.60%
392-TBD Orange HS Science Center Unallocated Funds F22					
5. Unallocated Bond Funds					
5.04 Unallocated Bond Funds					
UNCOMMITTED	\$1,520,780	\$0	\$0	\$0	
	\$1,520,780	\$0	\$0	\$0	0.00%
Total 392-TBD Orange HS Science Center Unallocated Funds F22	\$1,520,780	\$0	\$0	\$0	0.00%
392-9520 Orange HS Unallocated Funds F21					
5. Program Reserve					
5.03 Interest Earned - Reserve					
UNCOMMITTED	\$840,506	\$0	\$0	\$0	
	\$840,506	\$0	\$0	\$0	0.00%
4. Construction Support Costs					
4.15 Miscellaneous Fees					
UNCOMMITTED	\$0	\$0	\$0	\$0	
OUSD COST OF INTEREST DISTRIBUTION	\$25,457	\$25,457	\$25,457	\$0	100.00%
	\$25,457	\$25,457	\$25,457	\$0	100.00%
Total 392-9520 Orange HS Unallocated Funds F21	\$865,963	\$25,457	\$25,457	\$0	2.94%
392-TBD Orange HS Unallocated Funds F22					
5. Unallocated Bond Funds					
5.04 Unallocated Bond Funds					
UNCOMMITTED	\$17,978,844	\$0	\$0	\$0	
	\$17,978,844	\$0	\$0	\$0	0.00%
Total 392-TBD Orange HS Unallocated Funds F22	\$17,978,844	\$0	\$0	\$0	0.00%



Measure S Bond Program

Financial Report for July 2021

Budget vs Actuals - By School and Budget Category with Vendor Detail

QSS Data thru 7/31/2021

	Budget	Contracted to Date	Expended to Date	Quarterly Expense Jul '21 - Sep '21	% Expended
Orange High School	\$72,865,963	\$44,694,307	\$43,325,237	\$223,280	59.46%
Villa Park High School					
394-0000 Villa Park HS IP Surveillance Camera and Systems					
4. Construction Support Costs					
4.13 FF&E (Laboratory Tables and Chairs, other)					
UNCOMMITTED	\$0	\$0	\$0	\$0	
CDW GOVERNMENT INC (Parts for IP Camera Systems)	\$32,182	\$32,182	\$32,182	\$0	100.00%
DIGITAL NETWORKS GROUP INC (F/I IP Camera Software)	\$8,635	\$8,635	\$8,635	\$0	100.00%
INTER-PACIFIC INC	\$22,133	\$22,133	\$22,133	\$0	100.00%
	\$62,949	\$62,949	\$62,949	\$0	100.00%
Total 394-0000 Villa Park HS IP Surveillance Camera and Systems	\$62,949	\$62,949	\$62,949	\$0	100.00%
394-9520 Villa Park HS Science Center (DSA 04-117022)					
1. Design Cost					
1.01 Architect					
UNCOMMITTED	\$132,416	\$0	\$0	\$0	
DKS ASSOCIATES	\$85,690	\$85,690	\$80,657	\$0	94.13%
LIONAKIS	\$14,059	\$14,059	\$14,059	\$0	100.00%
LPA INC	\$2,472,131	\$2,472,131	\$2,301,940	\$0	93.12%
	\$2,704,296	\$2,571,880	\$2,396,656	\$0	88.62%
2. Construction Cost					
2.01 Construction					
UNCOMMITTED	\$138,538	\$0	\$0	\$0	
ANGELES CONTRACTOR, INC	\$20,232,690	\$20,232,690	\$11,722,279	\$1,209,839	57.94%
	\$20,371,228	\$20,232,690	\$11,722,279	\$1,209,839	57.54%
2.02 OFCI and Other Construction					
UNCOMMITTED	\$111,781	\$0	\$0	\$0	
ACCO ENGINEERED SYSTEMS INC	\$150,829	\$150,829	\$127,947	\$0	84.83%
AMERICAN REPROGRAPHICS CO LLC	\$1,026	\$1,026	\$0	\$0	0.00%
ARROW RESTAURANT EQUIPMENT	\$13,887	\$13,887	\$13,869	\$0	99.86%
CAROLINA BIOLOGICAL SUPPLY	\$24,213	\$24,213	\$0	\$0	0.00%
DEVELOPMENT GROUP INC	\$52,939	\$52,939	\$52,937	\$0	100.00%
FISHER SCIENCE EDUCATION	\$26,187	\$26,187	\$21,027	\$0	80.29%
FLINN SCIENTIFIC INC	\$12,364	\$12,364	\$0	\$0	0.00%
WW GRAINGER INC	\$3,043	\$3,043	\$1,148	\$1,039	37.74%
	\$396,269	\$284,488	\$216,927	\$1,039	54.74%



Measure S Bond Program

Financial Report for July 2021

Budget vs Actuals - By School and Budget Category with Vendor Detail

QSS Data thru 7/31/2021

	Budget	Contracted to Date	Expended to Date	Quarterly Expense Jul '21 - Sep '21	% Expended
3. Program and Construction Management					
3.01 Program Management Fees					
UNCOMMITTED	\$254,669	\$0	\$0	\$0	
CORDOBA CORPORATION	\$0	\$0	\$0	\$0	
CUMMING CONSTRUCTION MGMT INC	\$811,112	\$909,524	\$743,606	\$0	91.68%
	\$1,065,781	\$909,524	\$743,606	\$0	69.77%
3.02 Construction Management Fees					
UNCOMMITTED	\$6,082	\$0	\$0	\$0	
CORDOBA CORPORATION	\$1,998,493	\$1,998,493	\$1,956,156	\$39,868	97.88%
	\$2,004,575	\$1,998,493	\$1,956,156	\$39,868	97.58%
4. Construction Support Costs					
4.02 Title, Environmental, Stormwater Management					
UNCOMMITTED	\$36,668	\$0	\$0	\$0	
CHICAGO TITLE COMPANY	\$750	\$750	\$750	\$0	100.00%
OUSD COST OF INTEREST DISTRIBUTION	\$1	\$1	\$1	\$0	100.00%
PLACEWORKS INC	\$87,059	\$87,059	\$73,237	\$0	84.12%
STATE WATER RESOURCES CONTROL BOARD (SWRCB)	\$484	\$484	\$484	\$0	100.00%
	\$124,962	\$88,294	\$74,471	\$0	59.60%
4.03 Commissioning					
UNCOMMITTED	\$9,722	\$0	\$0	\$0	
P2S ENGINEERING INC	\$31,635	\$31,635	\$26,688	\$674	84.36%
	\$41,357	\$31,635	\$26,688	\$674	64.53%
4.05 DSA Review Fees					
UNCOMMITTED	\$117,302	\$0	\$0	\$0	
DIVISION OF STATE ARCHITECT	\$289,250	\$289,250	\$289,250	\$0	100.00%
	\$406,552	\$289,250	\$289,250	\$0	71.15%
4.06 Postage, Printing & Advertising					
UNCOMMITTED	\$12,273	\$0	\$0	\$0	
AMERICAN REPROGRAPHICS CO LLC	\$19,506	\$19,506	\$12,630	\$0	64.75%
SOUTHERN CALIFORNIA NEWS GROUP	\$1,768	\$1,768	\$1,768	\$0	100.00%
	\$33,548	\$21,274	\$14,398	\$0	42.92%
4.07 DSA Inspection (IOR)					
UNCOMMITTED	\$1	\$0	\$0	\$0	
BPI INSPECTION SERVICE	\$450,375	\$450,375	\$433,678	\$72,643	96.29%
	\$450,376	\$450,375	\$433,678	\$72,643	96.29%
4.08 DSA Construction Phase Testing (LOR)					
UNCOMMITTED	\$815	\$0	\$0	\$0	
NINYO & MOORE	\$745,557	\$745,557	\$745,557	\$0	100.00%
	\$746,373	\$745,557	\$745,557	\$0	99.89%
4.09 Relocation					



Measure S Bond Program

Financial Report for July 2021

Budget vs Actuals - By School and Budget Category with Vendor Detail

QSS Data thru 7/31/2021

	Budget	Contracted to Date	Expended to Date	Quarterly Expense Jul '21 - Sep '21	% Expended
UNCOMMITTED	\$15,700	\$0	\$0	\$0	
Beltmann Group, Inc.	\$7,080	\$7,080	\$851	\$0	12.02%
ULINE INC	\$1,860	\$1,860	\$702	\$0	37.75%
	\$24,640	\$8,940	\$1,553	\$0	6.30%
4.11 Preliminary Testing (Hazmat, Topo, Geo, etc)					
UNCOMMITTED	\$1,657	\$0	\$0	\$0	
CALIFORNIA GEOLOGICAL SURVEY (Geology and Seismology Review)	\$3,600	\$3,600	\$3,600	\$0	100.00%
ENVIRONMENTAL NETWORK CORPORATION	\$19,215	\$19,215	\$19,085	\$0	99.32%
LEIGHTON CONSULTING INC (Geotechnical Engineering)	\$20,000	\$20,000	\$16,549	\$0	82.75%
PSOMAS	\$27,000	\$27,000	\$21,034	\$0	77.90%
RMA GROUP (dba SITESCAN)	\$53,125	\$53,125	\$44,890	\$0	84.50%
SPECTRUM FIRE PROTECTION (Fire Hydrant Flow Test)	\$1,000	\$1,000	\$1,000	\$0	100.00%
	\$125,597	\$123,940	\$106,158	\$0	84.52%
4.12 Utility Connection Fees (Local Permits)					
UNCOMMITTED	\$78,806	\$0	\$0	\$0	
SOUTHERN CALIFORNIA EDISON	\$400	\$400	\$400	\$0	100.00%
STATE WATER RESOURCES CONTROL BOARD (SWRCB)	\$1,699	\$1,699	\$1,699	\$0	100.00%
	\$80,905	\$2,099	\$2,099	\$0	2.59%
4.13 FF&E (Laboratory Tables and Chairs, other)					
UNCOMMITTED	\$90,622	\$0	\$0	\$0	
CDW GOVERNMENT INC (Parts for IP Camera Systems)	\$59,662	\$65,624	\$0	\$0	0.00%
CULVER-NEWLIN INC	\$12,359	\$12,359	\$12,359	\$0	100.00%
INTER-PACIFIC INC	\$7,325	\$7,325	\$7,325	\$0	100.00%
SIERRA SCHOOL EQUIPMENT COMPANY	\$485,250	\$485,250	\$0	\$0	0.00%
TURTLE STORAGE dba AMERICAN BICYCLE CO	\$6,871	\$6,871	\$6,871	\$0	100.00%
VWR INTERNATIONAL LLC	\$47,922	\$52,714	\$47,922	\$39,049	100.00%
	\$710,011	\$630,143	\$74,477	\$39,049	10.49%
4.14 Legal Counsel					
UNCOMMITTED	\$33,146	\$0	\$0	\$0	
	\$33,146	\$0	\$0	\$0	0.00%
5. Contingency					
5.01 Construction Contingency					
UNCOMMITTED	\$1,135,815	\$0	\$0	\$0	
	\$1,135,815	\$0	\$0	\$0	0.00%
5.02 Project Contingency					
UNCOMMITTED	\$7,806,929	\$0	\$0	\$0	
	\$7,806,929	\$0	\$0	\$0	0.00%
Total 394-9520 Villa Park HS Science Center (DSA 04-117022)	\$38,262,359	\$28,388,583	\$18,803,953	\$1,363,110	49.14%



Measure S Bond Program

Financial Report for July 2021

Budget vs Actuals - By School and Budget Category with Vendor Detail

QSS Data thru 7/31/2021

	Budget	Contracted to Date	Expended to Date	Quarterly Expense Jul '21 - Sep '21	% Expended
394-9520 Villa Park HS Interim Housing (DSA 04-116788)					
1. Design Cost					
1.01 Architect					
UNCOMMITTED	\$0	\$0	\$0	\$0	
LPA INC	\$70,000	\$70,000	\$70,000	\$0	100.00%
	\$70,000	\$70,000	\$70,000	\$0	100.00%
2. Construction Cost					
2.01 Construction					
UNCOMMITTED	\$0	\$0	\$0	\$0	
ANGELES CONTRACTOR, INC	\$1,074,556	\$1,074,556	\$1,074,556	\$0	100.00%
	\$1,074,556	\$1,074,556	\$1,074,556	\$0	100.00%
2.02 OFCI and Other Construction					
UNCOMMITTED	\$0	\$0	\$0	\$0	
ACCO ENGINEERED SYSTEMS INC	\$36,527	\$36,527	\$36,527	\$0	100.00%
	\$36,527	\$36,527	\$36,527	\$0	100.00%
4. Construction Support Costs					
4.01 Rental					
UNCOMMITTED	\$1	\$0	\$0	\$0	
ELITE MODULAR LEASING & SALES INC	\$567,326	\$567,326	\$499,726	\$0	88.08%
	\$567,327	\$567,326	\$499,726	\$0	88.08%
4.05 DSA Review Fees					
UNCOMMITTED	\$0	\$0	\$0	\$0	
DIVISION OF STATE ARCHITECT	\$24,163	\$24,163	\$24,163	\$0	100.00%
	\$24,163	\$24,163	\$24,163	\$0	100.00%
4.07 DSA Inspection (IOR)					
UNCOMMITTED	\$0	\$0	\$0	\$0	
BPI INSPECTION SERVICE	\$43,265	\$43,265	\$43,265	\$0	100.00%
	\$43,265	\$43,265	\$43,265	\$0	100.00%
4.08 DSA Construction Phase Testing (LOR)					
UNCOMMITTED	\$0	\$0	\$0	\$0	
NINYO & MOORE	\$41,908	\$41,908	\$41,908	\$0	100.00%
	\$41,908	\$41,908	\$41,908	\$0	100.00%
4.09 Relocation					
UNCOMMITTED	\$0	\$0	\$0	\$0	
Beltmann Group, Inc.	\$4,640	\$4,640	\$4,640	\$0	100.00%
	\$4,640	\$4,640	\$4,640	\$0	100.00%
Total 394-9520 Villa Park HS Interim Housing (DSA 04-116788)	\$1,862,385	\$1,862,385	\$1,794,785	\$0	96.37%



Measure S Bond Program
Financial Report for July 2021
Budget vs Actuals - By School and Budget Category with Vendor Detail

QSS Data thru 7/31/2021

	Budget	Contracted to Date	Expended to Date	Quarterly Expense Jul '21 - Sep '21	% Expended
394-9520 Villa Park HS Parking and Drop Off (DSA 04-118521)					
1. Design Cost					
1.01 Architect					
UNCOMMITTED	\$0	\$0	\$0	\$0	
LPA INC	\$107,305	\$107,305	\$59,506	\$0	55.45%
	\$107,305	\$107,305	\$59,506	\$0	55.45%
2. Construction Cost					
2.01 Construction					
UNCOMMITTED	\$0	\$0	\$0	\$0	
ANGELES CONTRACTOR, INC	\$2,750,000	\$2,750,000	\$2,594,435	\$0	94.34%
	\$2,750,000	\$2,750,000	\$2,594,435	\$0	94.34%
4. Construction Support Costs					
4.05 DSA Review Fees					
UNCOMMITTED	\$5,233	\$0	\$0	\$0	
DIVISION OF STATE ARCHITECT	\$37,450	\$37,450	\$37,450	\$0	100.00%
	\$42,683	\$37,450	\$37,450	\$0	87.74%
4.06 Postage, Printing & Advertising					
UNCOMMITTED	\$0	\$0	\$0	\$0	
AMERICAN REPROGRAPHICS CO LLC	\$476	\$476	\$476	\$0	100.00%
	\$476	\$476	\$476	\$0	100.00%
4.07 DSA Inspection (IOR)					
UNCOMMITTED	\$0	\$0	\$0	\$0	
BPI INSPECTION SERVICE	\$44,880	\$44,880	\$40,264	\$190	89.71%
	\$44,880	\$44,880	\$40,264	\$190	89.71%
4.08 DSA Construction Phase Testing (LOR)					
UNCOMMITTED	\$7,528	\$0	\$0	\$0	
NINYO & MOORE	\$83,024	\$83,024	\$64,832	\$0	78.09%
	\$90,552	\$83,024	\$64,832	\$0	71.60%
Total 394-9520 Villa Park HS Parking and Drop Off (DSA 04-118521)	\$3,035,897	\$3,023,136	\$2,796,963	\$190	92.13%
394-9520 Villa Park HS Phase II (DSA 04-119694)					
1. Design Cost					
1.01 Architect					
UNCOMMITTED	\$0	\$0	\$0	\$0	
LPA INC	\$1,877,000	\$1,877,000	\$935,481	\$0	49.84%
	\$1,877,000	\$1,877,000	\$935,481	\$0	49.84%



Measure S Bond Program

Financial Report for July 2021

Budget vs Actuals - By School and Budget Category with Vendor Detail

QSS Data thru 7/31/2021

	Budget	Contracted to Date	Expended to Date	Quarterly Expense Jul '21 - Sep '21	% Expended
3. Program and Construction Management					
3.01 Program Management Fees					
UNCOMMITTED	\$261,668	\$0	\$0	\$0	
CUMMING CONSTRUCTION MGMT INC	\$58,462	\$58,462	\$57,341	\$0	98.08%
	\$320,130	\$58,462	\$57,341	\$0	17.91%
3.02 Construction Management Fees					
UNCOMMITTED	\$17,365	\$0	\$0	\$0	
CORDOBA CORPORATION	\$206,396	\$206,396	\$63,580	\$14,418	30.80%
	\$223,761	\$206,396	\$63,580	\$14,418	28.41%
4. Construction Support Costs					
4.03 Commissioning					
UNCOMMITTED	\$0	\$0	\$0	\$0	
P2S ENGINEERING INC	\$8,429	\$8,429	\$1,540	\$1,540	18.27%
	\$8,429	\$8,429	\$1,540	\$1,540	18.27%
4.05 DSA Review Fees					
UNCOMMITTED	\$0	\$0	\$0	\$0	
DIVISION OF STATE ARCHITECT	\$188,750	\$188,750	\$188,750	\$0	100.00%
	\$188,750	\$188,750	\$188,750	\$0	100.00%
4.06 Postage, Printing & Advertising					
UNCOMMITTED	\$0	\$0	\$0	\$0	
AMERICAN REPROGRAPHICS CO LLC	\$8,000	\$8,000	\$0	\$0	0.00%
	\$8,000	\$8,000	\$0	\$0	0.00%
4.11 Preliminary Testing (Hazmat, Topo, Geo, etc)					
UNCOMMITTED	\$1,657	\$0	\$0	\$0	
ENVIRONMENTAL NETWORK CORPORATION	\$10,860	\$10,860	\$4,640	\$0	42.73%
NINYO & MOORE	\$58,576	\$58,576	\$53,223	\$28,576	90.86%
PSOMAS	\$26,550	\$26,550	\$26,550	\$0	100.00%
	\$97,643	\$95,986	\$84,413	\$28,576	86.45%
Total 394-9520 Villa Park HS Phase II (DSA 04-119694)	\$2,723,713	\$2,443,023	\$1,331,104	\$44,534	48.87%
394-TBD Villa Park HS Science Center Unallocated Funds F22					
5. Unallocated Bond Funds					
5.04 Unallocated Bond Funds					
UNCOMMITTED	\$1,192,646	\$0	\$0	\$0	
	\$1,192,646	\$0	\$0	\$0	0.00%
Total 394-TBD Villa Park HS Science Center Unallocated Funds F22	\$1,192,646	\$0	\$0	\$0	0.00%
394-9520 Villa Park Unallocated Funds F21					



Measure S Bond Program

Financial Report for July 2021

Budget vs Actuals - By School and Budget Category with Vendor Detail

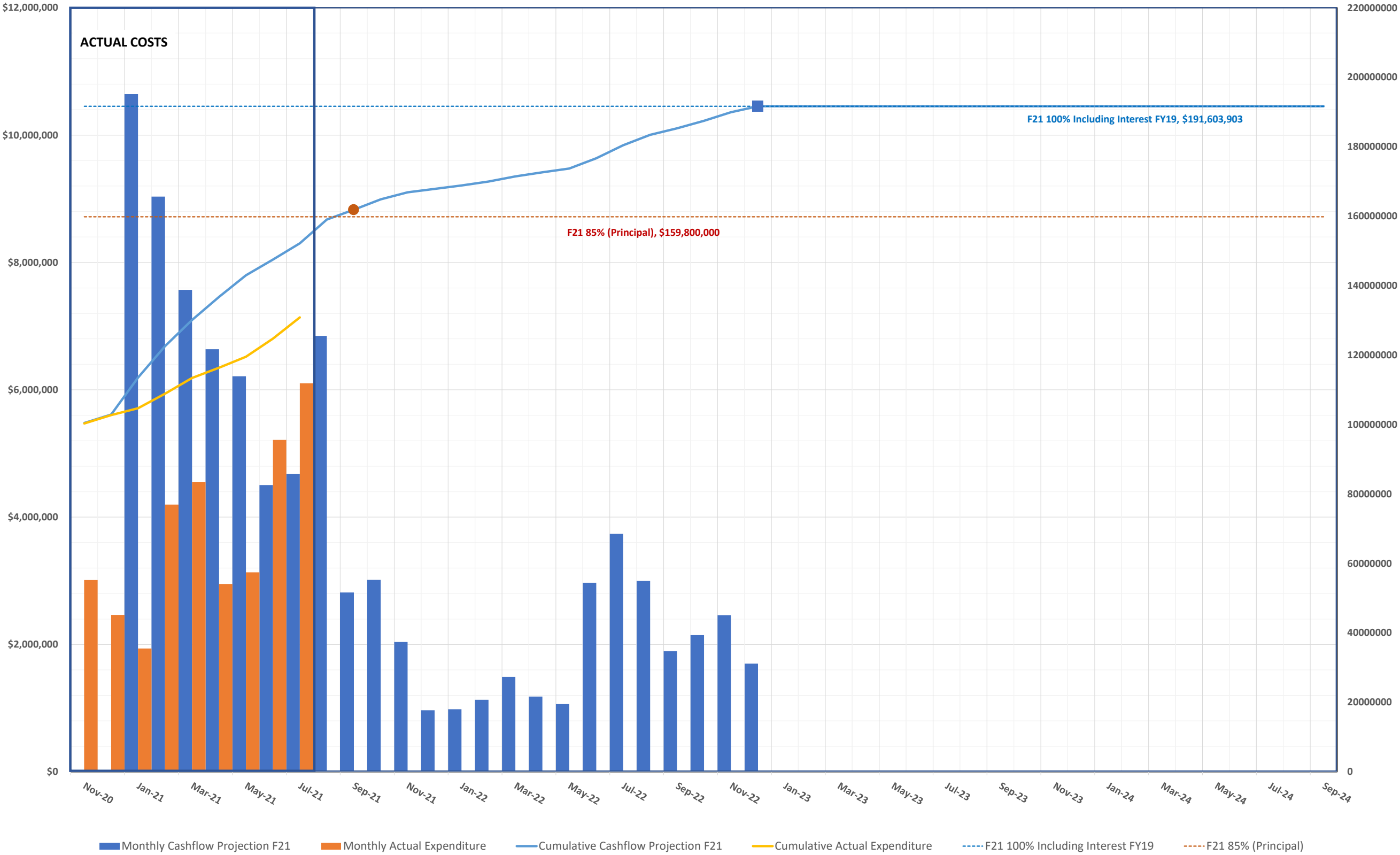
QSS Data thru 7/31/2021

	Budget	Contracted to Date	Expended to Date	Quarterly Expense Jul '21 - Sep '21	% Expended
4. Construction Support Costs					
4.15 Miscellaneous Fees					
UNCOMMITTED	\$0	\$0	\$0	\$0	
OUSD COST OF INTEREST DISTRIBUTION	\$20,426	\$20,426	\$20,426	\$0	100.00%
	\$20,426	\$20,426	\$20,426	\$0	100.00%
5. Program Reserve					
5.03 Interest Earned - Reserve					
UNCOMMITTED	\$0	\$0	\$0	\$0	
	\$0	\$0	\$0	\$0	
Total 394-9520 Villa Park Unallocated Funds F21	\$20,426	\$20,426	\$20,426	\$0	100.00%
394-TBD Villa Park Unallocated Funds F22					
5. Unallocated Bond Funds					
5.04 Unallocated Bond Funds					
UNCOMMITTED	\$25,538,287	\$0	\$0	\$0	
	\$25,538,287	\$0	\$0	\$0	0.00%
Total 394-TBD Villa Park Unallocated Funds F22	\$25,538,287	\$0	\$0	\$0	0.00%
Villa Park High School	\$72,698,662	\$35,800,501	\$24,810,180	\$1,407,833	34.13%



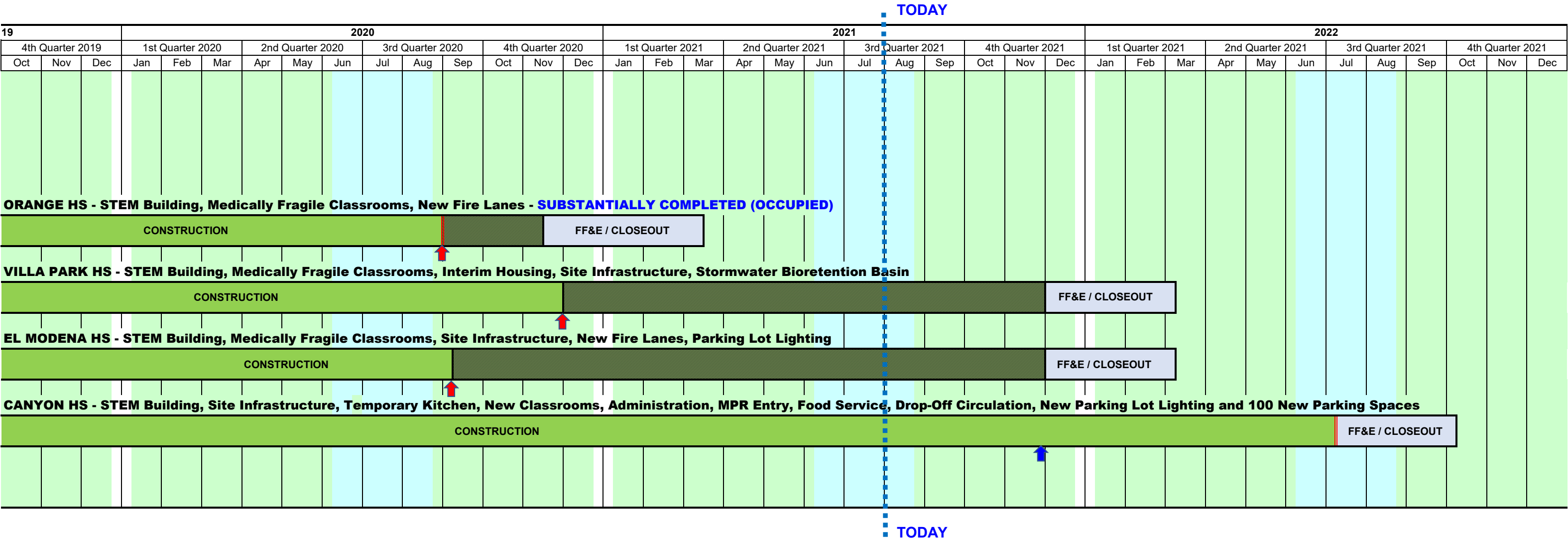
3.2 CASH FLOW PROJECTIONS

MEASURE S BOND PROGRAM - Series A 2018 CASH FLOW PROJECTION (Phase I and II)
Actual Costs thru July 31, 2021, NOT INCLUDING ACCRUALS PENDING PAYMENT
Fund 21 Planned Costs Projected as of December 31, 2020





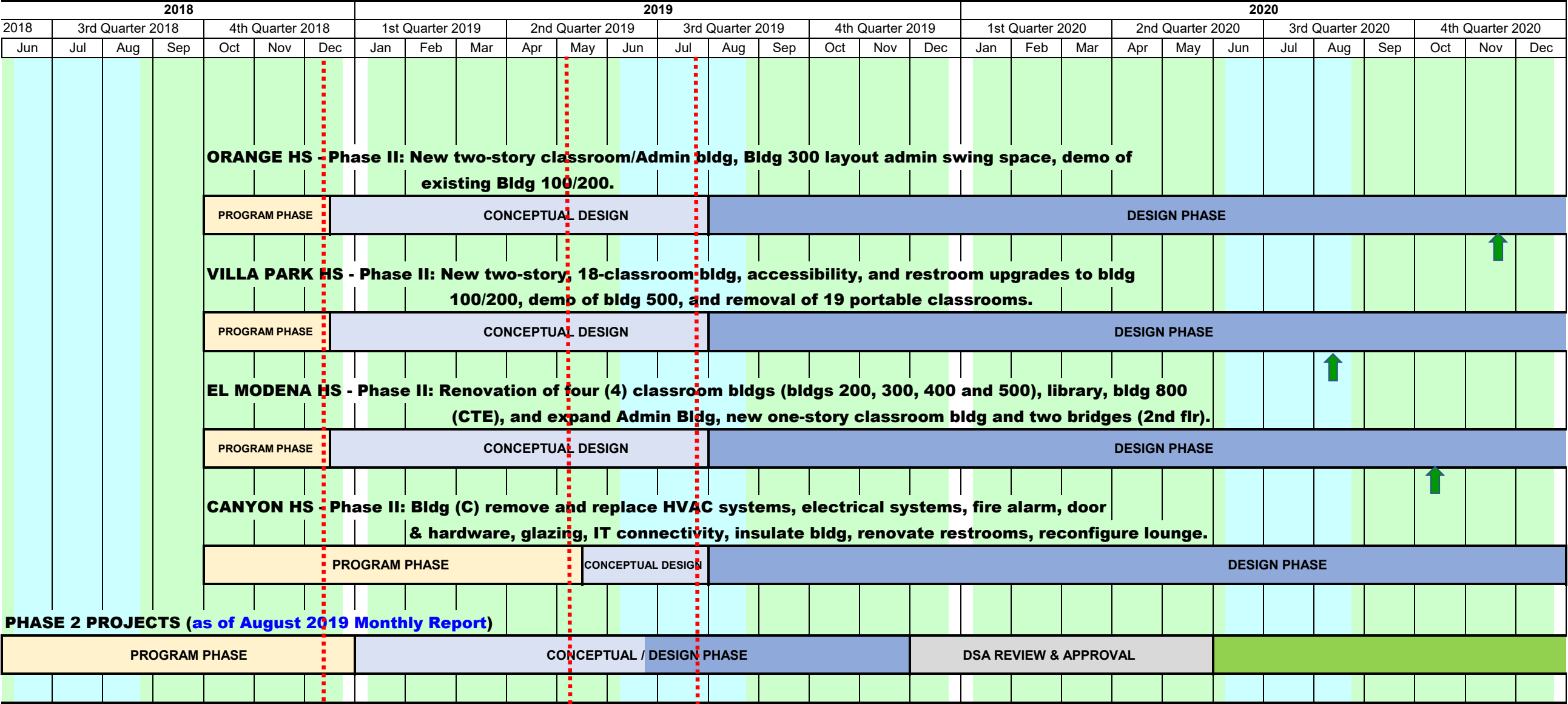
MEASURE S BOND PROGRAM - PHASE I: SCHEDULE SUMMARY



- SUMMER BREAK
- STEM Building Substantial Completion
- There is a date under legal negotiation (see monthly report) that may extend this substantial completion date (the dashed section is the extension under review).
- There has been a Substantial Completion date change approved by the Board of Education (see under specific project for the Change Order # referenced).



MEASURE S BOND PROGRAM - PHASE II: SCHEDULE SUMMARY



SUMMER BREAK

Conceptual Design Board Approved 12/13/18

Conceptual Design Board Approved 5/9/19 for Canyon HS

Phase II Design & Budget Board Approved 7/25/19

Orange HS

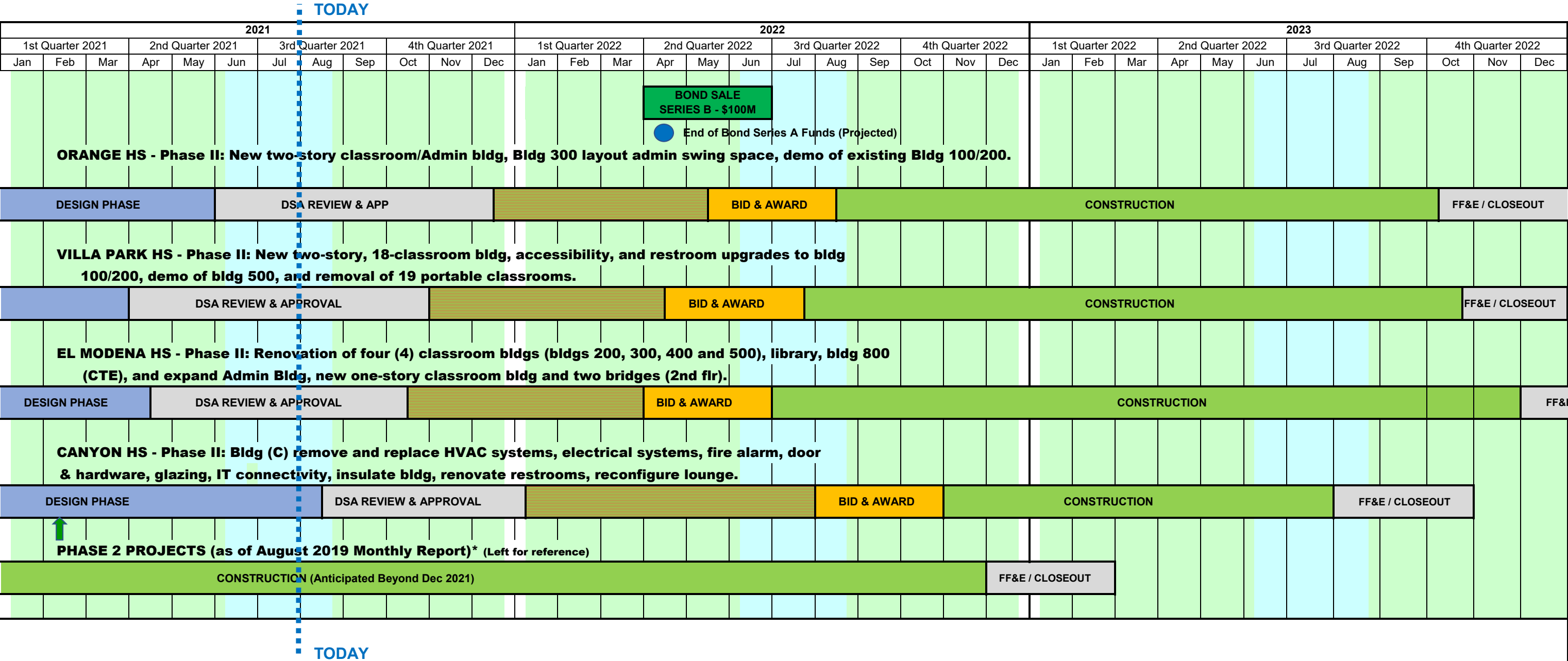
El Modena HS

Villa Park HS

Canyon HS



MEASURE S BOND PROGRAM - PHASE II: SCHEDULE SUMMARY



SUMMER BREAK

EXTENDED CONSTRUCTION START
(for Phase II Bond Award)

Phase II Design Document & Construction Estimate Board Approval (Completed)

Orange HS

-

November 19, 2020 Board Meeting

El Modena HS

-

October 15, 2020 Board Meeting

Villa Park HS

-

August 13, 2020 Board Meeting

Canyon HS

-

Februray 11, 2021 Board Meeting

Board of Education

Kathryn A. Moffat, President
Andrea Yamasaki, Vice-President
Kris Erickson, Clerk
Rick Ledesma
John Ortega
Ana Page
Angie Schlueter-Rumsey

Gunn Marie Hansen, Ph.D.
Superintendent

David A. Rivera
**Assistant Superintendent/CBO
Business Services**

Scott Harvey
**Senior Executive Director
Administrative Services**



Facilities & Planning Department
Measure S Bond Program
726 W. Collins Avenue
Orange, CA 92867
T: (714) 628-4500