

2021-22

Originally published: August 25, 2021
Updated: September 17, 2021

St. Louis Park Public Schools COVID Return to School Guide

What's New?

PAGE 10:
COVID-19 Dashboard

PAGE 11:
COVID Testing Options

PAGE 12:
Positive Cases / Exposure / Quarantine

PAGES 13-15:
At-Home Learning During Quarantine



St. Louis Park
Public Schools

Updated September 17, 2021 12:03 PM

www.slpschools.org/families/covid-updates-information

2021-22 COVID Return to School Guide

Table of Contents

Superintendent's Message.....3	COVID-19 Dashboard 10	School Nutrition 18
2020-2025 Strategic Plan4	COVID Testing Options 11	General Guidelines
2021-22 Learning Plan5	Positive COVID Cases 12	Recess 19
How Families Can Prepare at Home5	COVID Exposure 12	Bus Safety 19
In-Person Learning6	Communications from School 12	Parent Pick-Up / Drop-Off 19
Technology6	Quarantine 12	Athletics 19
K-12 Online Learning Option.....7	At-Home Learning During	Large Group Gatherings 19
EP Online Program Details8	Quarantine - Grades K-5..... 13	Volunteer/Visitor Procedures..... 19
Social Emotional Learning Support.....9	At-Home Learning During	Field Trips..... 19
Face Coverings 10	Quarantine - Grades 6-8..... 14	Kids Place Childcare..... 19
Physical Social Distancing 10	At-Home Learning During	After School Clubs & Activities..... 19
Quarantine..... 10	Quarantine - Grades 9-12 15	Community Education 19
Contact Tracing..... 10	Cleaning & Disinfection Plan 16	Contact Information20
Screening & Testing 10	Handwashing & Hand Sanitizing 17	Resources21
COVID-19 Decision Tree 10	Promoting Vaccination..... 17	

Bold = Pages with revised or updated content



**St. Louis Park
Public Schools**

Welcome the 2021-22 school year!



Greetings Students, Parents/Guardians and Staff,

As we approach the start of the 2021-22 school year, we want to provide you with more information about the mitigation strategies we are implementing to start the school year. The information contained in this guide is designed to support you in the transition back-to-school this fall.

We are committed to providing a safe and healthy environment for all students, staff and families. Specific highlights of the guide include information regarding:

- masking;
- isolation and quarantining;
- physical distancing;
- promoting vaccinations;
- cleaning and disinfection; and
- handwashing.

I would like to acknowledge the work of the staff who have planned and coordinated action over the summer to prepare for the safe return to school (Kids Place on September 7; Grades 1-12 on September 8; Kindergarten and ECSE on September 9; and Early Learning/ECFE on September 13). The work of these staff members demonstrates the collective responsibility we all have to keep ourselves and each other safe this school year.

While I continue to remain optimistic about our ability to sustain in-person learning this school year, I know that it will require each of us to do our part. Things like keeping your child home if they are sick, reminding them of the importance of consistently and correctly wearing masks, reminding them to cover their cough and wash their hands will go a long way in helping to mitigate the impact of COVID-19. We look forward to partnering with you this school year to keep students safe.

In St. Louis Park Public Schools we are committed to providing a safe and nurturing environment that energizes and enhances the spirit of each of our students. I continue to be proud of and thankful for our school community. I am confident that our collective efforts will allow our students to have a positive, engaging and academically rigorous school year.

In community,

A handwritten signature in black ink that reads "Astein K. Osei". The signature is written in a cursive, flowing style.

Astein K. Osei, Superintendent

St. Louis Park Public Schools

2020-25 Strategic Plan

for Racial Equity Transformation

Mission Statement

St. Louis Park Public Schools sees, inspires, and empowers each learner to live their brilliance in an environment that centers student voice and experience to create racially equitable learning that energizes and enhances the spirit of our community.

Vision Statement

St. Louis Park Public Schools – Where students are seen and valued and become their best selves as racially conscious, globally minded contributors to society.

Core Values

We believe in:

- > **The brilliance of ourselves and others.**
Everyone has the capacity and responsibility to foster the growth and brilliance of others.
- > **Authentic community engagement.**
Engaging and supporting our employees, families, and communities will enhance the healthy development of each learner.
- > **High expectations.**
Instilling and upholding high expectations empowers students and staff to higher levels of achievement.
- > **Collective responsibility.**
Embodying the collective and urgent responsibility of anti-racist practices enriches a work and learning environment and community.
- > **Persistent effort.**
Through persistent effort we will create anti-racist schools and academically successful learners.
- > **Racial consciousness and cultural competence.**
Racial consciousness and cultural competence are essential to each person's ability to be a catalyst for change.
- > **Advocacy for equity.**
Everyone has equal intrinsic worth and we will advocate for the historically marginalized.

Areas of Focus & Priority Work for the 2021-22 School Year

Culturally Relevant Teaching and Learning

Priority work:

- Sustain and deepen culturally relevant teaching through the collaborative team process.

Equity Development

Priority work:

- Provide expanded professional development opportunities for all staff.

Family and Community Engagement

Priority work:

- Develop and implement a documented protocol for communication translations.
- Expand out-of-school time options for students.

Students at the Center

Priority work:

- Respond to data and recommendations from Student Data Interns (Summer 2020 and 2021 recommendations).

Structures and Systems

Priority work:

- Implement the PowerSchool E-Finance Plus Human Resources/Payroll/Finance System in place of Skyward.

Action Steps & Timelines

The Core Planning Team suggested Action Steps and Timelines in each Area of Focus. District Administration will determine actions steps to achieve in each area annually. The Action Steps will be shared with the School Board at the start of each school year and an Annual Report of Progress will be completed at the end of each school year.

What Families Can Expect When Schools Reopen

2021-22 Learning Plan

The St. Louis Park Public Schools School Board approved the following recommendations on August 10, 2021:

- All students will begin the school year in-person, five days a week;
- Masks will be worn by all students (K-12) and staff indoors with the exception of when eating breakfast and lunch. Other times spent in the cafeteria, such as in line or socializing at tables, masks will need to be worn;
- Physical distancing will be implemented to the extent possible;
- As long as masks are consistently and properly worn, students will not be required to quarantine even if deemed in close contact; and
- When quarantine is warranted, the District will require 10 days without testing or 7 days with a negative test result (test must occur on day 5 or later after exposure).

The District will continue to monitor local and state COVID case data and will make changes to this year's learning plan when appropriate. The District will also continue to use guidance from the CDC and the Minnesota Department of Health (MDH) to inform its decisions.



Staying Safe Together

How Can Families Prepare at Home?

The guidelines St. Louis Park Public Schools will implement to address the challenges of COVID-19 in the upcoming school year may seem uncomfortable to students at first. Try these tips to help your child prepare at home.



Talk

Talk to your child about returning to school in September



Model

Model at home wearing a face covering and washing your hands



Pick Out

Allow your child to pick out a face covering that is comfortable to him or her



Practice

Practice putting on and taking off a face covering. You can even practice with a favorite doll or stuffed animal!



Listen

Encourage your child to ask questions and communicate his or her feelings

E-12 In-Person Learning / Technology



St. Louis Park
Community Education
EARLY LEARNING PRESCHOOL

In-Person Learning for Early Learning

All Early Learning Programs will start the year with in-person instruction and with no option for online learning.

This model applies to:

- ECFE
- ECSE
- Early Learning Preschool

In-Person Learning for K-12

Students in grades K-12 will start the year learning in-person, five days a week. An online learning option, EP Online, is available through a partnership with Eden Prairie Schools (more details can be found on the pages that follow).

Technology

Students in grades 6-12 will be issued a district-owned Chromebook and should not bring their own device to school this year.

Grade K-5 classrooms will have District-owned Chromebooks and iPads and each student will be assigned a device to use while in the classroom for the school year; they will not take the devices home with them.



K-12 Online Learning Option for 2021-22 School Year

St. Louis Park Public Schools is partnering with EP Online (Eden Prairie Schools) for full-time, online learning for SLP families during the 2021-22 school year. EP Online will provide online learning for students from kindergarten through grade 12. Students will stay enrolled in SLP while attending all their classes at EP Online.

The St. Louis Park Public Schools and Eden Prairie Schools partnership is a natural one as the mission, core values and strategic initiatives align in both school districts.

St. Louis Park Public Schools Mission

St. Louis Park Public Schools sees, inspires, and empowers each learner to live their brilliance in an environment that centers student voice and experience to create racially equitable learning that energizes and enhances the spirit of our community.

Eden Prairie Schools Mission

Inspire each student to learn continuously so they are empowered to reach personal fulfillment and contribute purposefully to our ever-changing world.

St. Louis Park Public Schools is committed to serving all students. The 2021-22 partnership with Eden Prairie Schools via EP Online provides an opportunity for students and families to continue learning from a distance while remaining connected to their SLP peers, schools and community.

Online Learning Partnership Highlights

SLP students may register for online learning at any time during the school year; however, if a student is interested in returning to in-person learning they may only do so at the semester break. Students will be enrolled in St. Louis Park Public Schools while attending classes at EP Online.

EP Online will provide SLP students with instructional technology; including: an iPad (K-8) or a MacBook Air (9-12), as well as a robust technology support system to ensure students stay focused on learning.

SLP students participating in this partnership program will receive regular communications from their classroom teacher and from Eden Prairie Schools communications channels.

SLP Schools students will remain connected to their peers and schools through:

- SLP students and families will regularly meet with a SLP teacher to discuss progress, needed services, and answer questions.
- Families will receive weekly SLP school and district-level communications.
- Families and students are invited (and encouraged) to participate in SLP school and district events and activities.
- Students will participate in SLP athletics and activities, as offered by grade level.

SLP students will have access to all wrap-around services (including social workers, school psychologists, English as a second language and special education teachers) to meet individualized student needs. Services will be provided by SLP Staff.

Students will follow the Eden Prairie Schools official school calendar which is very similar to SLP. [CLICK HERE](#) to review and download the 2021-22 Eden Prairie Schools calendar.

Students who are enrolled in Park Spanish Immersion Elementary School (PSI) and select online learning for the 2021-22 school year will receive Spanish programming, but EP Online will not provide a K-5 Spanish Immersion experience. (NOTE: Last year's online immersion experience was designed as a stop-gap measure to address the global pandemic based on the volume of family interest).



K-12 Online Learning Option for 2021-22 School Year



EP ONLINE

Inspiring each student every day

Program Details

- EP Online for grades K-5 provides live, online interaction with an Eden Prairie Schools teacher each day. Teachers have extensive training and experience in teaching in schools, and online.
- EP Online for grades 6-12 is a blended model of live teaching and independent work that provides greater student flexibility as students move through the grades.
- EP Online provides extensive parent/guardian involvement through scheduled, bi-weekly check-ins with a teacher for students K-8.
- The curriculum is a blend of proven online curriculum strengthened by Eden Prairie School's high quality curriculum - taught by teachers who know it well.
- EP Online is a state-approved, comprehensive online education provider.



Watch a Recorded Webinar to Learn More!

SLP Superintendent Astein Osei and Dr. Raymond Diaz, Director of EP Online, previously recorded a webinar that provides an overview of the SLP Schools and EP Online partnership. This webinar is available for playback on the SLP Schools website.

Please click this link to view the webinar: bit.ly/EPOnlineWebinar

Click here to view the slide deck from the SLP/EP Online presentation: <https://bit.ly/EPOnlineSlideDeck>

Registration Information

Students must already be enrolled in SLP Schools to register for the K-12 Online Learning Option for 2021-22 School Year. If you need to enroll in SLP Schools, **CLICK HERE** for SLP Online Enrollment.

To register for K-12 Online Learning Option for 2021-22 School Year, SLP students and families should complete page one of the **ONLINE LEARNING SUPPLEMENTAL NOTICE OF STUDENT REGISTRATION FORM**. [Click here](#) to download a pdf form to complete electronically. Once complete, please email the form to enrollment@slpschools.org. The District Enrollment Center will complete page two of the registration form and send to EP Online.

Registration must be completed by September 3, 2021.

If you have specific questions about Enrollment in St. Louis Park Public Schools or Registration in the K-12 Online Learning option, please call 952-928-6000.



**St. Louis Park
Public Schools**

Stay connected!

Facebook: @stlouisparkpublicschools

Twitter: @SLPublicSchools
@283SUP (Superintendent)

Instagram: @st.louisparkpublicschools

Web: www.slpschools.org | www.gopark.org (athletics)

YouTube: www.youtube.com/c/stlouisparkpublicschools



EP Online Questions?

Please watch the pre-recorded webinar (link shown at left) or contact your school counselor.

Social Emotional Learning Support (SEL)

Social Emotional Student Support

The COVID pandemic has resulted in an increase of mental health issues for students of all ages. St. Louis Park Public Schools has dedicated staff who are trained to recognize and confront these issues when appropriate. If you feel that your student is experiencing stress, depression, anxiety or any other mental health concerns, please contact the school directly.

Aquila Elementary School:
952-928-6500

Park Spanish Immersion Elementary School:
952-928-6555

Peter Hobart Elementary School:
952-928-6600

Susan Lindgren Elementary School:
952-928-6700

St. Louis Park Middle School:
952-928-6300

St. Louis Park High School:
952-928-6100

Social Emotional Staff Support

The VITAL WorkLife app is part of St. Louis Park Public Schools' Employee Assistance Program (EAP). Download the app on either the Apple or Google Play stores. Once you download the app, use the credentials previously published in the *FLOW* newsletter to login and start using this free resource.

Take advantage of the Educator Peer Coaching service for any employee working in our school and childcare programs. Making a difference in the lives of children is what likely drew you to becoming an educator. You go above and beyond for your students every single day. But at times it might feel like you are running on empty – depleted of the resources you need to take care of yourself. Sometimes, even educators need a little extra care – a compassionate listener who understands the work, life and family challenges you face on a daily basis – and has walked in your shoes.

Your peer coach is a confidential, knowledgeable sounding board for discussing concerns, such as:

- High levels of stress and low levels of autonomy
- Improving time management skills
- Negative feedback from leadership, peers, parents or other staff
- Difficulty balancing the demands of family and work responsibilities



COVID-19 Protocols

Face Coverings

Please remember that masks are required to be worn by all students (K-12) and staff when indoors with the exception of when individuals are eating breakfast or lunch. Masks are also required on school busses at all times.

Families are also reminded to keep students home when they are sick, including if they have any COVID-related symptoms such as a cough, sore throat, runny/stuffy nose, fever, loss of taste or smell, shortness of breath, nausea, vomiting or diarrhea.

Physical Social Distancing

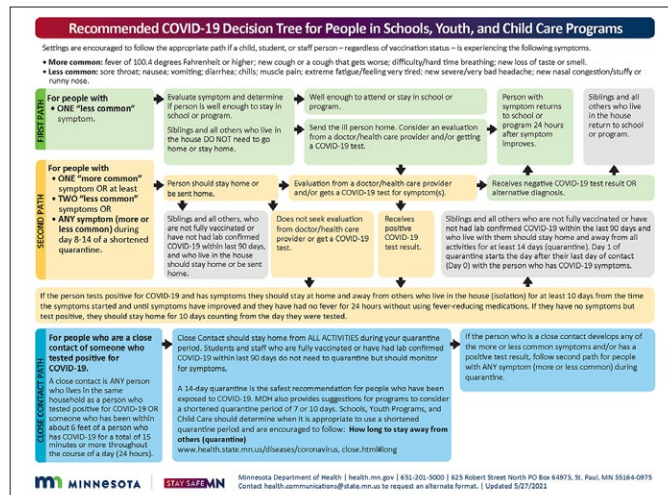
Physical distancing will be implemented to the extent possible. When physical distancing cannot be achieved - school cafeterias and lunchrooms during daily breakfast and lunch times - student contract tracing practices will be implemented.

Contact Tracing

Contact tracing will only take place when there is an exposure indoors when masks were not properly worn.

COVID-19 Decision Tree

[Click here](#) to view the COVID-19 Decision Tree and narrative produced by the MN Department of Health.




2021-22 COVID-19 Dashboard

The District's COVID-19 Dashboard will be published every Wednesday when school is in session until further notice. Exceptions would include Winter Break and Spring Break. The dashboard will include data by school building including the number of positive COVID cases, and the number of quarantined individuals from the previous seven days, and the cumulative positive cases for the 2021-22 school year. The COVID Dashboard will be published every Wednesday in the *SLP Communicator* e-newsletter as well as on the District website on the [COVID Updates & Information](#) page.

2021-22 COVID Dashboard

St. Louis Park Public Schools

DATE REPORTED: SEPTEMBER 15, 2021			
	# STUDENTS WITH POSITIVE COVID CASES SEPT. 8-15, 2021	# STUDENTS ENTERING QUARANTINE SEPT. 8-15, 2021	CUMULATIVE # STUDENTS WITH POSITIVE COVID CASES THIS SCHOOL YEAR
	5 Districtwide	34 Districtwide	5 Districtwide
Aquila Elementary	0	0	0
Park Spanish Immersion Elementary	1	7	3
Peter Hobart Elementary	3	23	3
Susan Lindgren Elementary	0	0	0
St. Louis Park Middle School	1	4	1
St. Louis Park High School	0	0	0
Early Learning	0	0	0

COVID-19 Protocols

COVID Testing Options

FOR STUDENTS: BinaxNOW Rapid Tests

If a student develops symptoms at school, they will be sent to the health office. The parent/guardian listed as the first emergency contact will be called to pick up their child (if the first emergency contact is not available, the school will move down the list of contacts). The parent/guardian will be called to pick up their child. They will be sent home with a BinaxNOW test. These tests will be completed at home. The results are rapid (15 minutes) and the parent/guardian will call the school health office to report the result to the Health Aide or Nurse, where they will receive further information as to whether or not they have to quarantine and for how long. If a student is at home and is showing symptoms of COVID, a parent/guardian can pick up a BinaxNOW test from school to administer at home.

Tests are allocated to Minnesota schools based on 2020-21 student enrollment. St. Louis Park Public Schools is waiting on the arrival of tests; an update will be sent once the tests arrive.

Information on BinaxNOW Rapid Tests is available here: <https://www.health.state.mn.us/diseases/coronavirus/schools/binaxotc.pdf>

FOR STAFF: Vault PCR Tests

The school district's current allocation of VAULT PCR (saliva) tests are being distributed to buildings for staff use. Testing dates will be scheduled at each site and tests will be returned via UPS mail in batches for analysis. Results are usually available 48-72 hours after samples are received at the lab. Vault tests are for staff use only and available in the school office. Once the testing dates are scheduled we will send updated information.

Information on Vault PCR Tests is available here: <https://www.health.state.mn.us/diseases/coronavirus/schools/vault.pdf>

For additional testing opportunities for families see below.

ADDITIONAL LOCAL OPTIONS FOR TESTING:

These COVID-19 [community testing sites](#) across Minnesota offer free tests to all.

Visit local pharmacies, hospitals and clinics near you. Search here: [Find Testing Locations](#).

Students, parents/guardians, and families can also use the COVID-19 test [at home program](#) to have a test mailed to them.



COVID-19 Protocols

Positive COVID Cases

- Stay home for 10 days from symptom onset, OR 10 days from positive test, if no symptoms.
- People who test positive for COVID should stay at home until all three of these things are true:
 - It has been 10 days since they first felt sick or tested positive;
 - They are feeling better; and
 - They have had no fever for at least 24 hours, without using medicine that lowers fever.

COVID Exposure at School

- When a student or staff member is a close contact in school (exposed to COVID at school), they need to stay home and quarantine for either 10 days with no COVID testing or 7 days if a negative PCR test was done on day 5 or after.
- **Exception:** In the K–12 indoor classroom setting, the close contact definition excludes students who were within 3 to 6 feet of an infected student (laboratory-confirmed) if both the infected student and the exposed student(s) correctly and consistently wore well-fitting masks the entire time. This exception does not apply to teachers, staff, or other adults in the indoor classroom setting.

Communications from School for Positive COVID Cases & Close Contacts

- Schools and Programs will communicate with parents/guardians and families as follows:
 - Parents/guardians of students who have been identified as positive COVID cases will receive a phone call from the school health office.
 - Close contacts to the positive case will receive a phone call alerting them to the positive case and giving them quarantine instructions as well as a [COVID-19 Fact Sheet](#) from Hennepin County Public Health.
 - Parents/guardians of students in the classroom will receive an email alerting them to a positive case in the classroom.
 - Teachers and Staff will receive email notification of all positive cases in the school.

COVID Exposure at Home

- Quarantine 14 days from last contact with the positive household member.
- When separating is not possible, the 14 day quarantine starts when the COVID positive individual finishes their isolation.
- A shortened quarantine is not an option for COVID positive household members.

Who does not need to quarantine?

- If someone is vaccinated and is exposed, they do not need to quarantine if the following are true:
 - The COVID exposure was at least 14 days after their vaccination series was fully completed. They do not currently have any symptoms of COVID.
 - If someone has recovered from COVID in the past 90 days and is exposed again, they do not need to quarantine if ALL of the following are true:
 - Their illness was laboratory confirmed in the past 90 days.
 - They have fully recovered.
 - They do not currently have any symptoms of COVID.

COVID Exclusion Guidelines

“More Common Symptoms” consistent with COVID: Fever greater than or equal to 100.4 F; New onset and/or worsening cough; Difficulty breathing; and New loss of taste or smell

“Less Common Symptoms” consistent with COVID: Sore throat; Nausea; Vomiting; Diarrhea; Chills; Muscle pain; Excessive fatigue; New onset of severe headache; New onset of nasal congestion or runny nose

Students with one “more common symptoms” or two “less common symptoms” will need to stay home and isolate for either 10 days from symptom onset, or they may return sooner if they test negative for COVID or receive an alternate diagnosis from their health care provider.

Siblings/household members who are not fully vaccinated, or who have not had lab confirmed COVID in the last 90 days, should stay home as well unless the ill household member tests negative for COVID or receives an alternate diagnosis.

COVID-19 Protocols

At-Home Learning During Quarantine - Grades K-5

Purpose:

The School District's mission is to "see, inspire, and empower each learner to live their brilliance in an environment that centers student voice and experience to create racially equitable learning that energizes and enhances the spirit of our community."

The purpose of At-Home Learning during quarantine for Grades K-5 is to continue learning through practice and self-guided exploration.

Teacher "Live" Connection with Students

- **1-2 day quarantine** - None
- **3-5 day quarantine** - 1 Connect time (via phone or virtual meeting) with a classroom teacher
- **6-14 day quarantine** - 2-3 Connect times (via phone or virtual meetings) with a classroom teacher

Self-Guided Student Learning

- Students are expected to read daily (student's grade level will determine specific expectations)
- 3 mathematics lessons will be posted weekly in Seesaw based on mathematical concepts currently being taught in class
- Online learning tools on Symbaloo/Clever

Additional Notes

- Each grade level may assign one teacher per week to create/assign student quarantine work on a rotating basis.
- Family engagement in the learning experience during quarantine is offered, but it is not required if the family or child is not feeling well.
- Student work during quarantine is not a replacement for class time and will not take the same amount of time to complete as a school day.
- Teachers may opt to differentiate instruction and coursework based on student need and will do a check-in when students return to school.
- Classrooms will have a system to check-out devices for students learning in quarantine.



COVID-19 Protocols

At-Home Learning During Quarantine - Grades 6-8

As we move to 1:1 devices to support student learning, we will be utilizing Schoology as a Learning Platform for students at home during quarantine. Families with students learning from home can expect the following instructional tools to support each course:

- **Work to be completed from class** will be posted, along with any information students will need to be successful on the assignments. Roughly 2-5 times per week.
- **Folders will be created for the current unit of study** to organize materials, activities, and resources.
- **Due dates for assignments and projects**, with timelines, will be communicated via Schoology
- **Teachers** will be available to connect with students via email.



COVID-19 Protocols

At-Home Learning During Quarantine - Grades 9-12

As we move to 1:1 devices to support student learning, we will be utilizing Schoology as a Learning Platform for students at home during quarantine. Families with students learning from home can expect the following instructional tools to support each course:

- **Instructional, content-specific lessons** will be posted 2-5 times per week in Schoology.
- **Folders for units of study** will be created to include slide decks, handouts, graphic organizers, and resource links.
- **Assignments, projects, and an event calendar** with timelines and due dates will be shared.
- **Course information** will include a syllabus, important course-specific links, documents, communications, and teacher contact information.

Attendance and grades will remain in PowerSchool.

Synchronous learning will not be provided in the event a student is absent. Students and families should contact teachers for additional support regarding content posted to the Schoology course.



COVID-19 Protocols

Cleaning & Disinfection Plan

- Continually follow all Centers for Disease Control and Prevention (CDC) and Minnesota Department of Health (MDH) guidelines.
- Cleaning guidelines have been printed and shared with staff members for a successful cleaning process.
- Custodial staff will always strive to meet or exceed those guidelines when time, staffing levels, and equipment allow.

AREAS NEEDING CLEANING, FOLLOWED BY DISINFECTION INCLUDE:

- High-touch areas which refer to hard and soft surfaces that are routinely touched by different individuals. Examples may include, but are not limited to, student workstations, gym wall mats, doorknobs, countertops, bathroom services, copy machines, computer equipment, shared laptops or tablets, physical education equipment, locker rooms (benches, showers and toilet areas, shared break room appliances, handrails, and light switches).
- All of these areas will be wiped down and cleaned by all staff in the buildings as a team effort.

OTHER INFORMATION:

- Only green cleaning products and other approved Environmental Protection Agency (EPA)-registered cleaning chemicals will be used to clean school site classrooms and other usable areas.
- Part of facility staff duties daily is to continually clean all frequently high touch areas throughout the buildings.
- Facility will monitor CDC/MDH/MDE changes in cleaning procedures and will adjust when required for a safe and secure school facility.



COVID-19 Protocols

Handwashing & Hand Sanitizing

In order to promote and encourage handwashing and hand sanitizing, we will:

- Build routines of hand hygiene into the daily school schedule for all students and staff, including handwashing and sanitation breaks during or between classroom activities.
- Teach and reinforce handwashing with soap and water for at least 20 seconds and/or the safe use of hand sanitizer that contains at least 60% alcohol by staff and older students.
- Supervise the use of hand sanitizer by students.
- Ensure that children and staff with sensitivity or skin reactions to hand sanitizer can use soap and water.
- Reinforce handwashing during key times including but not limited to: arrival and dismissal; before, during, and after preparing or eating food; after using the bathroom; after blowing one's nose, coughing, or sneezing; after touching objects with bare hands that have been handled by other people.



Promoting Vaccination

According to CDC guidance, COVID vaccination among all eligible students as well as teachers, staff, and household members is the most critical strategy to help schools safely resume full operations. St. Louis Park Public Schools hosted numerous vaccination clinics in partnership with Hennepin County and the City of St. Louis Park that administered more than 3,200 vaccines. The school district continues to partner in community related vaccine activities and promote vaccine confidence among students, parents, and families.



School Nutrition

During the 2021-22 school year, all students will receive free meals as part of the federal COVID relief funding. However, this will only include the regular breakfast and lunch lines and does not include extra milk or á la carte items at the Middle School or High School. Students will need to purchase á la carte items from their meal accounts.

School Nutrition will not accept cash or checks on the serving line. We are asking parents/guardians to deposit funds in the family meal account prior to your student purchasing á la carte items. You will have access through your PowerSchool account to add funds for purchasing á la carte items.

Powerschool Parent Portal provides a link to each student's Wordware meal account where families can view student meal accounts and make payments online.

Even though meals will be free this year for all students, families are still strongly encouraged to apply for educational benefits. Students in households that meet the free or reduced-price meal income guidelines will generate compensatory revenue for the school district from the State of Minnesota. Schools must use compensatory revenue to meet the needs of students in such areas as remedial instruction, instructional materials including digital learning and technology, bilingual programs and additional teachers and teacher aides.

Every eligible meal form equals additional dollars for St. Louis Park Public Schools to provide students with free or reduced:

- Sports & Activities Fees
- Internet Access
- School Meals
- Advanced Placement (AP) Tests for potential college course credit
- College Application Fees

Where will students eat?

Children in Early Learning Programs will eat breakfast in their classrooms and lunch in the cafeteria.

Elementary school students will eat breakfast in their classrooms and lunch in the cafeteria.

Middle School students will eat breakfast and lunch in the cafeteria.

High School students will eat breakfast and lunch in the cafeteria.



General Guidelines

Recess

Elementary school students will be separated into pods for outdoor recess to limit the possibility of exposure to COVID or quarantine.

Bus Safety

Buses will run at full capacity this year and seating charts will not be implemented. We will increase ventilation through open windows and rooftop openings. Masks must be worn at all times on school buses. As long as masks are consistently and properly worn on the bus, students will not have to quarantine due to a positive case on their bus.

Parent Pick-Up and Drop-Off Procedures

With many families opting out of District provided transportation, school parking lots before and after school will be crowded. Please follow your school's pick-up and drop-off guidelines.

Athletics

The High School and Middle School athletic programs are fully operational to start the 2021-22 school year.

Participants

Active participants will not have to wear a mask during competition, however players and coaches of indoor teams (volleyball and swimming) will have to wear a mask while observing competition from the sidelines.

It should also be noted that the Minnesota State High School League has added a temporary provision to its Transfer and Residence bylaw. This additional provision provides eligibility to students who transferred during the 2020-2021 school year and have returned, or will return, to the school of their original enrollment. The return transfer must take place on or before Sept. 10, 2021.

Spectators

Spectators will be allowed to attend athletic events to start the 2021-22 school year. Masks will not be required for spectators at outdoor athletic events, but will be required for spectators at indoor athletic events such as volleyball and swimming.

Large Group Gatherings

Concerts, theatre performances, and other large indoor gatherings will be permitted and guests will be required to wear a mask. Any capacity restrictions will be communicated prior to each individual event.

Volunteer/Visitor Procedures

To start the 2021-22 school year, St. Louis Park Public Schools will allow volunteers and visitors into school buildings who are essential to the delivery of academics and other support. **Volunteers must complete an [online application](#).** Other activities such as shadowing students and classes will not be permitted.

Field Trips

We will begin the school year with no off-site field trips planned. Instead, building leaders will attempt to enrich students' educational experience by bringing guest speakers and programs to the schools.

Kids Place Childcare

Kids Place Childcare is fully operational to start the 2021-22 school year. Visit the St. Louis Park Community Education [website](#) to register.

After School Clubs & Activities

After school clubs and activities will be permitted. Registration information is coming soon and classes begin late September. Masks will be required for all indoor clubs and activities. Visit the St. Louis Park Community Education [website](#) for more information.

Community Education

Community Education before- and after-school classes for out-of-school time begin late September; registration coming soon. Continue to visit the St. Louis Park Community Education [website](#) for the latest information on classes and programs.

Contact Information - School Buildings

Aquila Elementary School

Main Line 952-928-6500
Attendance Line 952-928-6507
Health Office 952-928-6505

Park Spanish Immersion Elementary School

Main Line 952-928-6555
Attendance Line 952-928-6570
Health Office 952-928-6554

Peter Hobart Elementary School

Main Line 952-928-6600
Attendance Line 952-928-6604
Health Office 952-928-6605

Susan Lindgren Elementary School

Main Line 952-928-6700
Attendance Line 952-928-6693
Health Office 952-928-6693

St. Louis Park Middle School

Main Line 952-928-6300
Attendance Line 952-928-6394
Health Office 952-928-6311

St. Louis Park High School

Main Line 952-928-6100
Attendance Line 952-928-6045
Health Office 952-928-6108

Central Early Learning Center (Birth to Five Programs)

Main Line 952-928-6777
Early Childhood Family Education (ECFE) .. 952-928-6785
Kids Place 952-928-6764



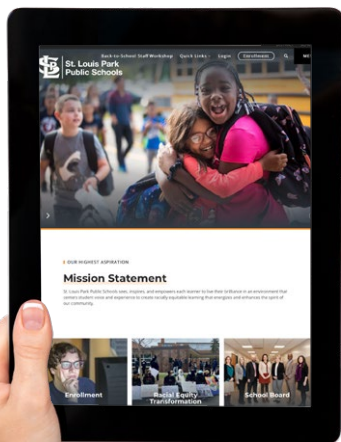
Resources

For the latest research, information and guidance about COVID-19, the following national and local resources may assist you:

- [American Academy of Pediatrics \(AAP\)](#)
- [Centers for Disease Control and Prevention \(CDC\)](#)
- [Minnesota Department of Health \(MDH\)](#)
- [Minnesota Department of Education \(MDE\)](#)

Please also visit the St. Louis Park Public Schools [COVID-19 website](#) to answer your questions and receive updated information. Also “Connect with Us!” to receive the latest news from the District.

Connect with St. Louis Park Public Schools!



On the go – on your smartphone, tablet or computer.

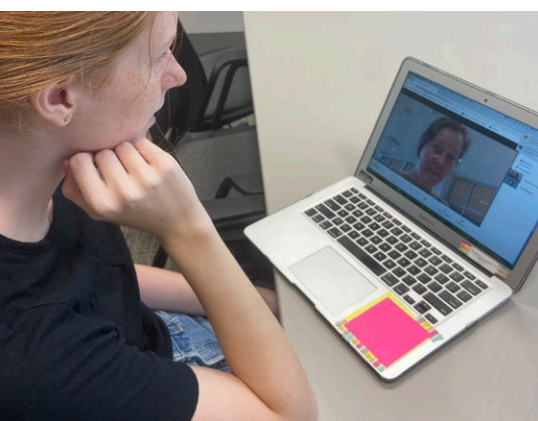
Facebook: @stlouisparkpublicschools

Twitter: @SLPublicSchools / @283SUP (Superintendent)

Instagram: @st.louisparkpublicschools

Web: www.slpschools.org / www.gopark.org (athletics)

YouTube: www.youtube.com/c/stlouisparkpublicschools



**St. Louis Park
Public Schools**

Achieving success, one student at a time!

Independent School District 283
6311 Wayzata Blvd.
St. Louis Park, MN 55416
952-928-6000

www.slpschools.org