

# Ecological Outcomes of the Construction of Student Accommodation at Frensham, Mittagong

*Dr David Robertson, Cumberland Ecology*

# Student Accommodation Project & Overall Site Ecology

- Site Context
- Site History and Assessments
- Environmental Constraints
- Ongoing Approval Works
- Ecological and Educational Opportunities






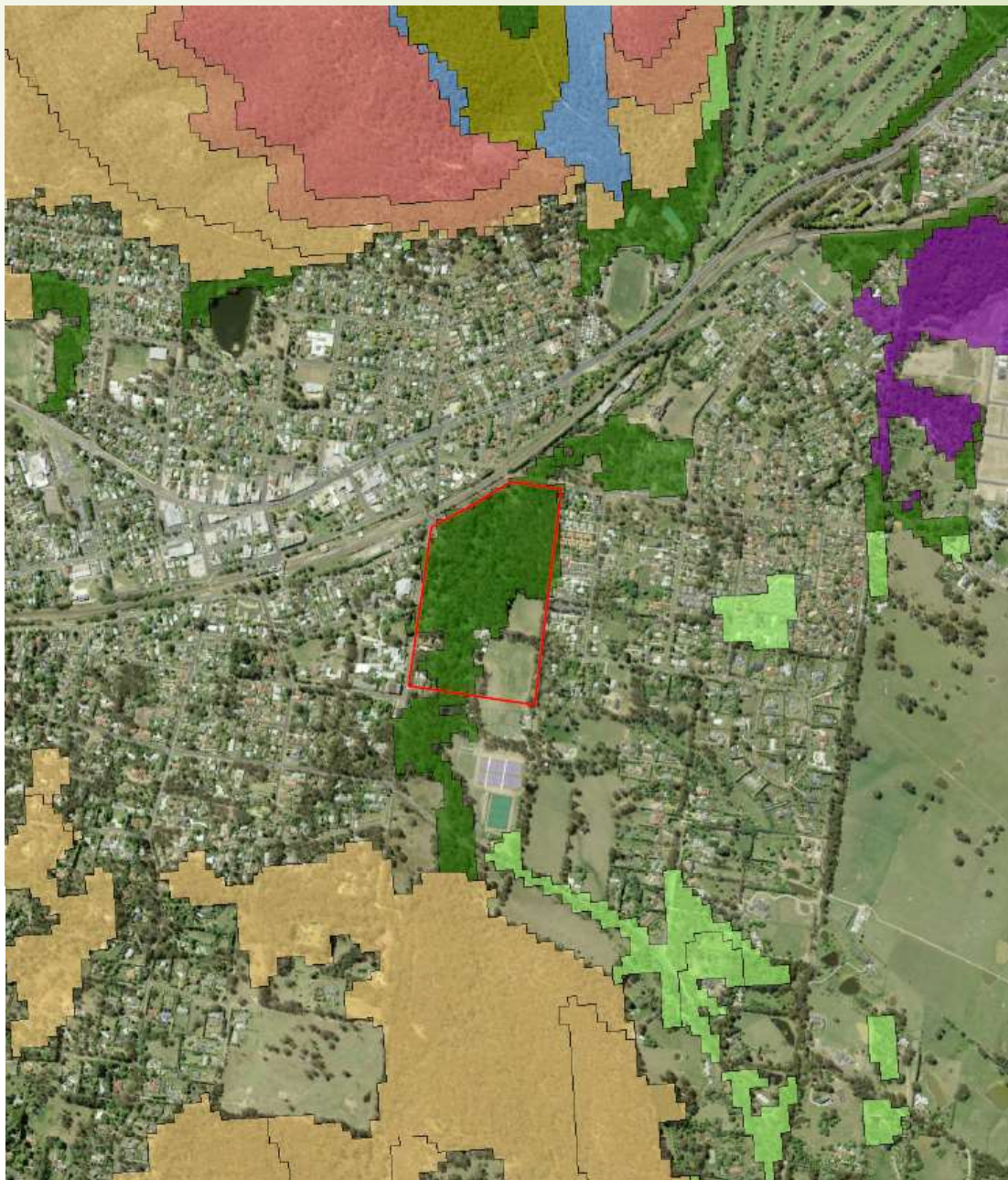
Coordinate System: MGA Zone 56 (GDA 94) 

Image Source:  
Image © NearMap 2021  
Dated: 14/1/2021


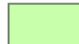
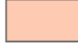



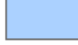


Data Source:  
NSW Government Spatial Services  
SIX Maps 'Clip and Ship'  
Wingecarribee LGA





0 100 200 300 400 m

**Legend**

- |   |                                 |   |   |                                   |
|---|---------------------------------|---|---|-----------------------------------|
|  | Subject Site                    | <b>Vegetation Community (Tozer 2010)</b>  |  | Southern Highlands Shale Woodland |
|  | Elevated Gorge Forest           |  | Tableland Grassy Box-Gum Woodland   |                                   |
|  | Highland Range Sheltered Forest |  | Tableland Swamp Flats Forest  |                                   |
|  | Lower Blue Mountains Wet Forest |  | Wingecarribee-Burrarorang Sandstone Forest  |                                   |
|  | Shoalhaven Sandstone Forest     |   |   |                                   |

## Legend

-  Subject Site
-  Locality (5km)

### Threatened Flora Records

-  *Acacia pubescens*
-  *Eucalyptus macarthurii*
-  *Grevillea raybrownii*
-  *Helichrysum calvertianum*
-  *Persoonia glaucescens*
-  *Persoonia mollis* subsp. *revoluta*
-  *Pterostylis ventricosa*

### Threatened Fauna Records

- |   |   |   |
|---|---|---|
|  Dusky Woodswallow         |  Greater Glider  |  Masked Owl                  |
|  Eastern False Pipistrelle |  Greater Glider population in the Mount Gibraltar Reserve area |  Powerful Owl                |
|  Eastern Pygmy-possum    |  Grey-headed Flying-fox                                      |  Scarlet Robin               |
|  Flame Robin             |  Koala   |  Spotted-tailed Quoll      |
|  Gang-gang Cockatoo      |  Large Bent-winged Bat                                       |  Squirrel Glider           |
|  Glossy Black-Cockatoo   |  Latham's Snipe  |  Varied Sittella           |
|  Greater Broad-nosed Bat |  Little Eagle  |  White-throated Needletail |

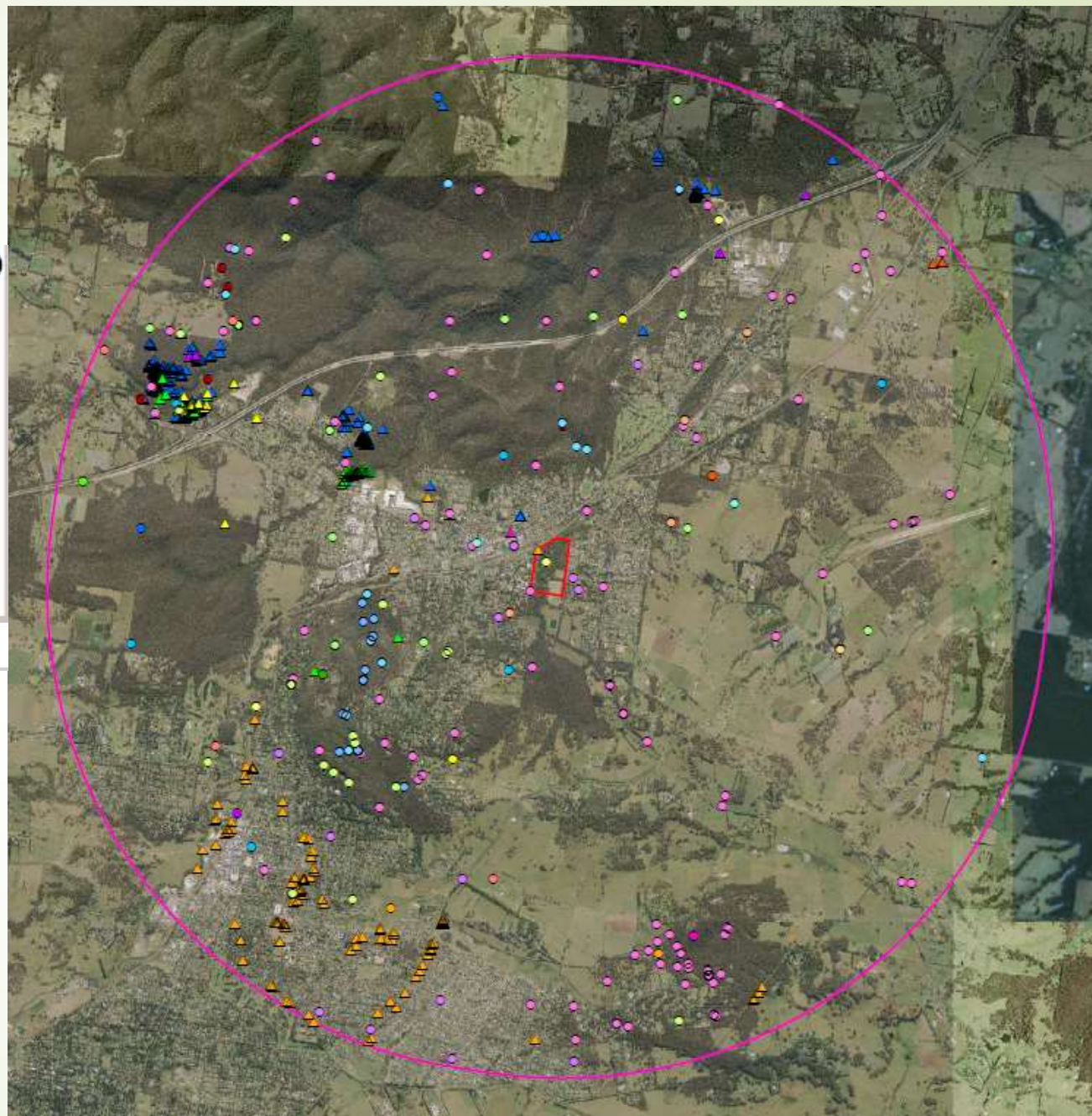
Coordinate System: MGA Zone 56 (GDA 94)



Data Source:  
NSW Government  
Spatial Services  
SIX Maps 'Clip and Ship'  
Wingecarribee LGA

cumberland  
ecology

0 0.5 1 1.5 2 km



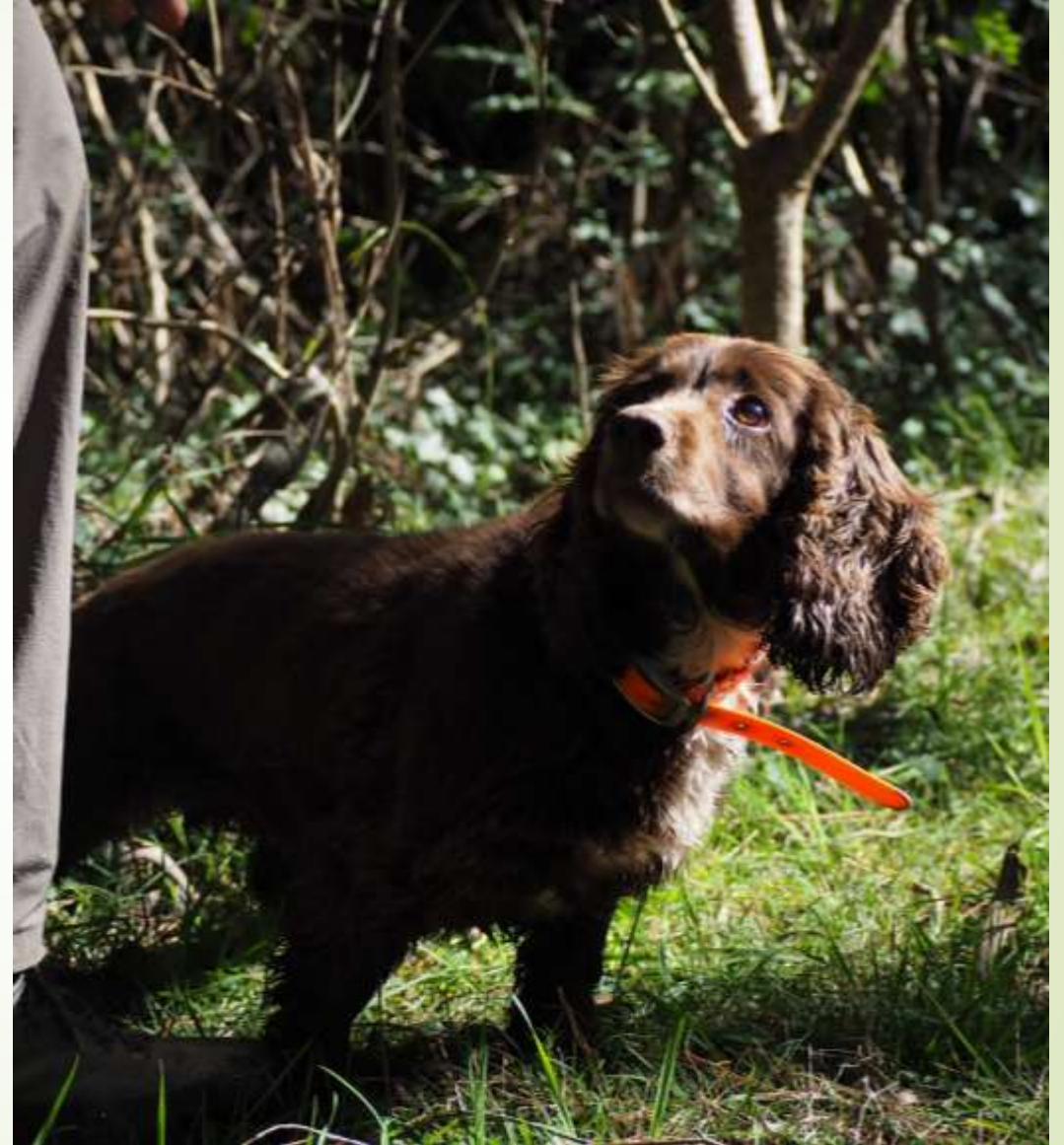


# Ecological Impacts of the Project

- ▶ Flora and fauna surveys completed from 2017 to 2021
- ▶ Impacts assessed in Biodiversity Development Assessment Report (BDAR) by Ecoplanning dated 21 April 2020 required clearing 0.64 ha native vegetation and 3.46ha thinned and maintained as an APZ
  - ▶ Impacts confined to relatively disturbed areas, with old pines amongst eucalypts
  - ▶ Development shifted largely outside riparian area
- ▶ BDAR calculates requirement for 70 ecosystem credits (Southern Highlands Shale Woodlands) and 70 species credits (Koala) to be purchased
- ▶ Surveys conducted include Vegetation Mapping, Targeted Threatened Flora Surveys, Habitat Assessment, Gang-gang Cockatoo Breeding Surveys, Anabat Bat Detection Surveys and Koala Detection Dog Surveys
- ▶ No significant impact under Commonwealth legislation

# Koala Dog Surveys

4 August 2021



# Avoid, minimise and mitigate for the Project

- ▶ Avoidance of Riparian Area
- ▶ Avoidance wildlife corridors
- ▶ Implementation of a Koala Plan of Management
- ▶ Implementation of a Construction Environmental Management Plan
- ▶ Implementation of Vegetation Management Plan
  - ▶ Continuation of current replanting and revegetation across the School
  - ▶ Replanting program in line with APZ requirements
- ▶ Ground dwelling fauna rehabilitation
  - ▶ Wildlife fencing
  - ▶ Fox and feral cat management
  - ▶ Wombat management



# Future Ecological Opportunities

- Ecological significance of the Lower Holt (development site) compared to Upper Holt
- Threatened Species Management Plan
- Biodiversity Management Plan
- Stewardship Site
- Riparian Management Plan



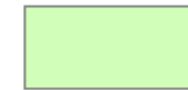




## Legend



Subject Site



Upper Holt



Lower Holt

Coordinate System: MGA Zone 56 (GDA 94)



Data Source:  
NSW Government Spatial Services  
SIX Maps 'Clip and Ship'  
Wingecarribee LGA

cumberland  
ecology

0 50 100 150 200 m



# Ecological & Educational Opportunities: Upper Holt

