



BRAWERMAN ELEMENTARY SCHOOL

Annual Report

2020-2021

MESSAGE FROM Advisory Board Chair

This was a year we will never forget. Of course there were the obvious reasons – a global pandemic, social upheaval, economic strife – but for me the 2020-2021 school year left an indelible imprint through the demonstration of the strength of our community and commitment to the Brawerman mission. Like every school, Brawerman was tested this year, and in my view, we shined. We were challenged by school closures, remote learning, cohort sizing, and testing protocols along with the rigor of our existing curriculum. Against this backdrop the administration, faculty and staff, along with our parents bound together to help one another, support our kids, and strengthen the community that is the heart and soul of Brawerman.



Nowhere was that support felt more than within the Brawerman Advisory Board. As a group of parent representatives from our East and West campuses the Advisory Board serves as the school's ambassadors, helping to advise Head of School Brandon Cohen and ensure the administration is fulfilling Brawerman's mission and vision to the best of its abilities.

Our community is in a unique position. We are a highly competitive independent school that marries rigorous academics with our rich Jewish traditions and history. Through the continued success of our endowment and the annual giving campaign, the school will be poised to deliver its community all the tools for success. The Brawerman vision for the future is to continue to create joyful Judaism and an excellent education to prepare our *mensches* for the modern world. Thank you for your continued support and unwavering commitment to this community.

ADAM STOTSKY, CHAIR, BRAWERMAN ADVISORY BOARD

BRAWERMAN ADVISORY BOARD

Adam Stotsky, *Chair*
Brad Conroy
Sarah Ellenbogen
Anna Fridman
Craig Gerber
Jennifer Ghozland

Jennifer Kaufman
Gretchen Klein
Caroline Kuperstock
Jessica Lewensztain
Jessica Rosenberg
Jannelle Ross

Jamie Sabet
Ben Scott
Anat Simantob
Steven Taylor

BRAWERMAN Parent Association

The **Brawerman Parent Association** embraced this all but typical school year. We reinvented ways to feel connected by honoring our traditions and showing gratitude for all members of our Brawerman family. By engaging in *tikkun olam* as a community, we remained anchored in hope or *tikvah*, Brawerman's theme for the year, and were reminded of what a vibrant, resilient, and hopeful community we are.

The **Brawerman West** PA capitalized on the drive-in model to ensure Jewish holidays were celebrated and grade level milestones were honored. It became a common occurrence to hear music fill the Brawerman campus and see students dancing on car roofs. This was the image during our once a month drive-in Shabbat where families were also given Shabbat bags complete with challah, grape juice, and candles, as well as at our Kindergarten Consecration where the youngest students were introduced into the Brawerman community. The PA also kept traditions alive by transitioning to an online Book Fair and Holiday Boutique, which supports Brawerman's scholarship fund. Continuity was also felt by keeping with our annual Thanksgiving, Book, and Toy Drives. By partnering together we were able to donate 26 baskets to Vista Del Mar, collect 722 books for Children's Bureau, and gather 121 toys for the El Nido Family Centers. Truly we felt hope by spreading hope.

Likewise the **Brawerman East** PA came together to support each other by patronizing the local businesses of fellow school parents and the Karsh Center with monthly donation drop-offs. We reinvented ways to feel connected even on Zoom. We started the year with a bake-off competition, hosted parent game nights, and invited grandparents and special friends to join our virtual Shabbat. The PA also supported the celebration of Jewish holidays, such as *Simchat Torah* and *Purim*, which featured a drive through carnival complete with a dunk tank.

Both the **Brawerman West and East** PAs were immensely grateful to our Brawerman teachers and administration for working tirelessly to bring our children back on campus as soon as possible. The PAs found every opportunity to provide grab-and-go-treats, personalized items, videos from students, and notes of gratitude for our faculty. It is this strong partnership between home and school that makes Brawerman truly a family. Being remote allowed the **Brawerman West and East** PAs to join together as a community for events and parent workshops. From familiar topics surrounding human development to novel topics related to the social-emotional landscape brought on by the pandemic, we felt more like one *kehillah* than any other year.



Jessica Rosenberg
PA President,
Brawerman West



Jennifer Ghozland
PA President,
Brawerman East



MESSAGE FROM

The Head of School



**We plan. God laughs. We plan more. God laughs more.
This was the story for the 2020–2021 school year.**

It was a story of a once in a lifetime crisis that had put us on a corona-coaster, which, even late into the winter, seemed to have no end in sight. This was a time that tested every school, and it tested Brawerman. We did not waver from who we are. Brawerman is a school that provides an unparalleled educational experience for students rooted in Jewish values in a nurturing community. Our path to achieving that mission has been and continues to be first and foremost to do what is right for the students, then for our families, faculty, and staff. We do this by being research based, by seeking best practices, by being innovative and willing to fail, and by understanding that at the core of an exceptional educational experience are the relationships we create here.

Every step of the way over the course of the last year we were thoughtful, deliberate, and incremental in our approach. The rules kept changing on us, so each change took time to adjust to. It was not a race. We were running a school during a global pandemic. We were able to find a new normal where we accepted the adjustments necessary. We found a new rhythm to how we operated our school.

In order to find that new rhythm, and keep it, we needed leadership. Our seamless transition adding Nadine Zysman in the Assistant Head of School and Principal of Brawerman East roles was smooth and effective. Noa Grant continued to be a calm, caring force who is an outstanding educator, and the addition of Danielle Sebring, always wise and steady, as a full time Assistant Principal made the East admin team absolutely stellar. Meanwhile, at Brawerman West, our seamless transition from Nadine Zysman to hard-working and passionate Andrea Weinstein in the Principal role was also smooth and effective, and we were thrilled to welcome Gillian Feldman, a proven leader who has worn multiple leadership hats in the past at Brawerman, back to the administration team to join the talented Michelle Handzo as Assistant Principal. I firmly believe we have the absolute best administrative team of any school, and together we created our new normal.

Brawerman was committed to finding a way to return our students safely to campus. The work during this time was intense and incessant, and we all owe a debt of gratitude to the Reopening Task Force—a group of volunteers who gave immense amounts of their time and expertise to help create our reopening plans. I want to thank Wilshire Boulevard Temple Board Trustees and Brawerman parents Caroline Kuperstock and Ronn Davids; Brawerman East parent and Children’s Hospital pediatrician Dr. Jenny Zipkin; Board member and ECC parent Claire Goldsmith, and

alumni Brawerman West parents Adam Stotsky and Lauryn Harris. Their work and dedication, in coordination with the work of Temple Executive Director Donna Nadel and Associate Executive Director and Covid-19 Coordinator Doug Lynn, were integral to the school’s planning and preparation for getting students back on campus. We also had the good fortune of our new Executive Director of Education, Naomi Reem, joining the WBT leadership team to help guide us since the spring, and we look forward to her wealth of knowledge and experience positively impacting Brawerman long into the future.

We were concerned about the pandemic’s impact on enrollment. When it was all said and done, we had almost no attrition due to the pandemic, and the 2021–2022 school year will have the highest overall enrollment for Brawerman in the history of the school. This is a testament to an incredibly strong admissions year led by Directors of Admissions Lindy Goldberg (West) and Chris Donohoe (East) and their teams of dedicated parent ambassadors who committed themselves to promoting our school.

Brawerman’s strengths are recognized by more than just committed parents. The Western Association of Schools and Colleges (WASC), was originally scheduled to visit us in the spring of 2020 just after we transitioned into *BES@home*, but we finally welcomed them virtually in the late fall. The visiting committee observed classes, met with students, teachers, parents, and administrators, and got to know our school and the Temple. They recognized the academic excellence, the sense of community, the joyful and meaningful Jewish programming, the strong emphasis on social emotional learning, the long-term stability of our community, and they sensed, even through screens, the *ruach* of the school. We ultimately were accredited for the maximum term and will not go through the process again for six more years.

Not only did the WASC team believe in us, we know that you continued to believe in us. Even during the pandemic, major gifts came into our endowment. In just the last year we received four new gifts equaling more than \$1.1 million dollars in cash and legacy gifts, one of which was a Championship level gift of \$1 million dollars. We also raised nearly \$1.3 million dollars in our Annual Giving Campaign, which was more critical than usual with the substantial additional costs we absorbed due to COVID-19 protocols. I am grateful to our inspired and diligent Director of Advancement Rebecca Spain in leading our fundraising efforts.

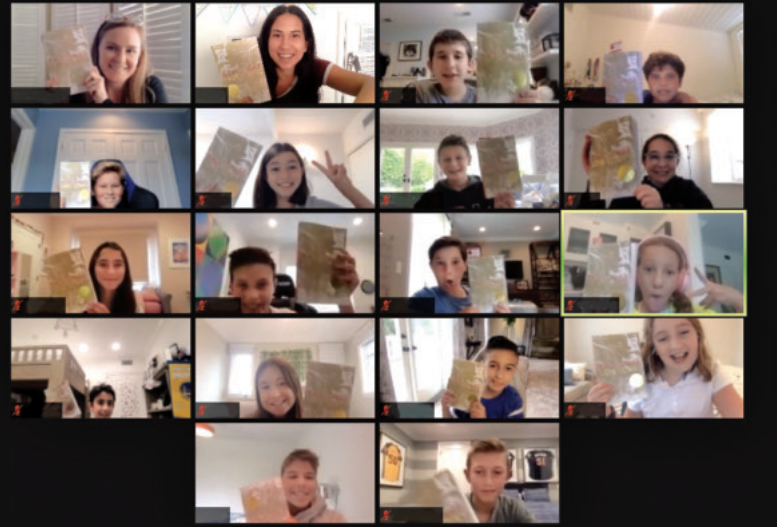
It was no accident our theme last year was *tikvah*. Could there ever be a time we needed hope more? But I acknowledge that I resisted it as a theme until Rabbi Ben-Naim, our Director of Jewish Life and Learning, shared a quote with me from the late Rabbi Lord Jonathan Sacks: “Hope is the belief that, *together*, we can make the world better.” It takes courage to hope because it is a call to action. When we were challenged by a pandemic, we showed flexibility, determination, creativity, and resourcefulness to make the best of each moment, using these challenges as opportunities to learn, and to persevere as individuals and as a community. We took action. My hope is that we will look back at this time not for what we lost, but for the perspective we gained. The way we navigated the last year together will always be a source of inspiration, gratitude, and hope for me. I have never been more proud to be a part of the Brawerman family.

BRANDON COHEN



Brawerman WEST

Spotlights



Tikkun Olam Projects

With the help of our Kindergarten students, Brawerman created Thanksgiving baskets for Vista Del Mar. The Book Drive was also a huge success as we collected hundreds of books for the Children's Bureau. We also teamed up with the Karsh Center to support our local YMCA who has expanded their services to support the growing homeless population in West LA. Brawerman families collectively gathered non-perishable snack bags which made a direct impact on our community.



Kindergarten Consecration and Buddies

On *Simchat Torah* when we begin the of reading of *Torah*, we also officially consecrate the newest members of our community, our kindergarteners, as they begin their Brawerman journey. Prior to the celebration, Grade 6 students made house visits to their buddies to give them a special mini *Torah* like all Brawerman Kindergarteners have received in years past.





Shabbat Celebrations

Whether it was a drive-in experience or on the yard, Brawerman families and students were able to gather together to enjoy singing and praying in celebration of Shabbat.

ADMINISTRATION - WEST



Andrea Weinstein
Principal



Rabbi Elissa Ben-Naim
Director of Jewish Life and Learning



Gillian Feldman
Assistant Principal



Michelle Handzo
Assistant Principal



Lindy Goldberg
Director of Admissions





Brawerman EAST

Spotlights



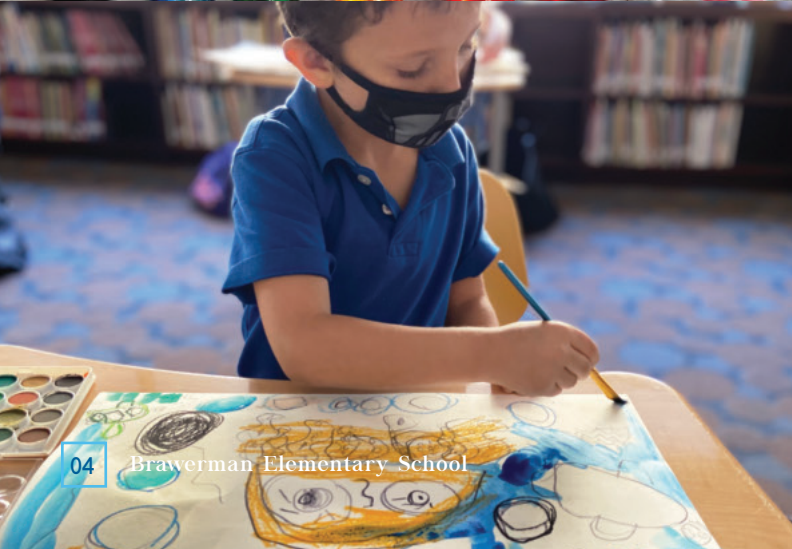
Tikvah Project

The *Tikvah* Project was a new addition to East's annual Spring Concert, encouraging students in our Grade 5/6 class to express themselves through art, regardless of the medium. The resulting projects interpreted the meaning of *tikvah*, or hope, our theme for the year, through original dance and choreography, film, poetry, music, photography, and visual arts.



Purim CARnival

Purim was celebrated with a drive-through "CAR"nival in the parking garage. Students came in costume and had the opportunity to drop Chris Donohoe, Director of Admissions, in a dunk tank, participate in a giant-sized candy count, dance to music, and much more! Swag bags with treats, magic tricks, crafts, and *hamentashen* dough were passed out to each vehicle. The day continued with lunch, goodies, a virtual magic show, *Megillah* reading, and a Shabbat song session.

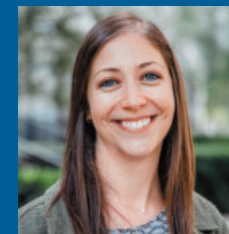




ADMINISTRATION - EAST



Nadine Zysman
Principal & Assistant
Head of School



Noa Grant
Assistant Principal



Danielle Sebring
Assistant Principal



Chris Donohoe
Director of Admissions

Makers Fair

While our Makers Fair looked a little different this year, the spirit of creating as a community was alive! The day began with students in all grade levels making reusable tote bags from t-shirts, one for themselves and one to be donated with "maker" activities for children attending programs at the Karsh Center. Students in Grades K-2 heard from guest innovator, Sarah Lange, an entrepreneur and granola maker from Bearclaw Kitchen. Students in Grades 3-6 were wowed by Michael Mischna, an atmospheric scientist who has supported the surface missions to Mars. With moments of tinkering with mechanical arms, building robots, experimenting with color, and watching crystals grow, each grade level felt the inspiration of the maker movement.





Celebrating Grade 6

MAZAL TOV TO THE BRAWERMAN EAST AND WEST CLASSES OF 2021!

They will be matriculating to the following secondary schools:
Brentwood School; The Buckley School; Campbell Hall;
Crossroads School; Geffen Academy; Harvard-Westlake School;
Milken Community School; Tree Academy; Valley Preparatory School; Windward School

Matriculation

Brawerman East and West students matriculate to the top-tier independent schools in Los Angeles.

Secondary Schools	2019-2021
The Archer School for Girls	3
Brentwood School	25
Campbell Hall	4
Crossroads School	8
Geffen Academy	10
Harvard-Westlake School	14
Milken Community School	18
Windward School	33
Other*	15
TOTAL	130

**1-2 student(s) between 2019-2021 has matriculated to the following schools: The Buckley School, Chadwick School, The Episcopal School of Los Angeles, Marlborough School, Oakwood School, Pressman Academy, Sinai Akiba Academy, Summit View School, Tree Academy, Valley Preparatory School, Viewpoint School, Wildwood School, and the Willows Community School.*

American University
 Art Center College of Design
 Bard College
 Barnard College
 Boston College
 Boston University
 Boulder Business School
 Brown University
 Cal Poly, San Luis Obispo
 Carleton College
 Carnegie Mellon University
 Chapman University
 Claremont McKenna College
 Colby College
 Colorado College
 Columbia University
 Cornell University
 Dartmouth College
 Drexel University
 Elon University
 Eugene Lang College
 FIDM
 George Washington University
 Georgia Institute of Technology
 Hamilton College
 Harvard University
 Indiana University
 Ithaca College
 Kenyon College
 Lewis and Clark College
 Loyola Marymount University
 Michigan State University
 Middlebury College
 New York University
 Northeastern University
 Northwestern University
 Oregon State University
 Otis College of Art and Design
 Parsons School of Design
 Pitzer College
 Pomona College
 Princeton University
 Purdue University



Rhode Island School of Design
 Rutgers University
 San Jose State University
 Scripps College
 Stanford University
 Syracuse University
 Tufts University
 Tulane University
 University of Arizona
 University of California, Berkeley
 University of California, Los Angeles
 University of California, Riverside
 University of California, Santa Cruz
 University of California, San Diego
 University of Chicago
 University of Colorado, Boulder
 University of Miami
 University of Michigan
 University of Pennsylvania
 University of Southern California
 University of Vermont
 University of Wisconsin
 Vanderbilt University
 Washington University in St. Louis
 Wesleyan University



MAZAL TOV *to the* Brawerman Class *of 2015!*



THEY WILL BE MATRICULATING TO
THE FOLLOWING COLLEGES AND UNIVERSITIES:

Colby College
Columbia University
Kivunim (Israel Gap Year)
Loyola Marymount University
Michigan State University
New York University
Northwestern University
Rutgers University
Scripps College

Stanford University
Tulane University
University of California, Los Angeles
University of Colorado
University of Indiana
University of Michigan
University of Southern California
University of Wisconsin
Washington University in St. Louis

BRAWERMAN

GRANDparents

We are thrilled to thank our Brawerman GRANDparents* for their generous support of our 2020-2021 Annual Giving Campaign. Purposeful connections with grandparents enrich our school community. By connecting *l'dor v'dor*, from generation to generation, we make personal meaning of the world we live in. We look forward to the expansion of this valuable program as it furthers the reach and scope of our school experience while providing additional layers of love and joy to our Brawerman extended family members.

Lynette & Derek Brown (*Liv Altshule, '25; Winston Altshule, '27*)

Susan & Michael Castle (*Madeleine Ross, '26*)

Helen & Gary Dosik (*Kayla Nickerson, '22; Rebecca Nickerson, '25*)

Linda & Larry Elins (*Ethan Sabet, '20; Layla Sabet, '23; Noah Sabet, '23*)

Lucy & Gregory Gelfan (*Levi Bloom, '27*)

Janet & Bill Glucksman (*Sam Glucksman, '22; Henry Glucksman, '24;*

Grace Glucksman, '26)

David Goldberg (*Nate Klein, '18; Charlie Klein, '21; Bernice McMordie, '27*)

Salli Harris (*Sloane Silverman, '20; Dane Silverman, '22; Blake Silverman, '25*)

Linda Z. Klein (*Nate Klein, '18; Charlie Klein, '21*)

Linda F. Lynn (*Eden Lynn, '20; Talia Lynn, '24*)

Phyllis Ribakoff and José Mandes (*Asher Ribakoff, '26*)

Janet & Lenny Rosenblatt (*Chloe Conroy, '21;*

Nathan Labranche, '24; Sophia Labranche, '26;

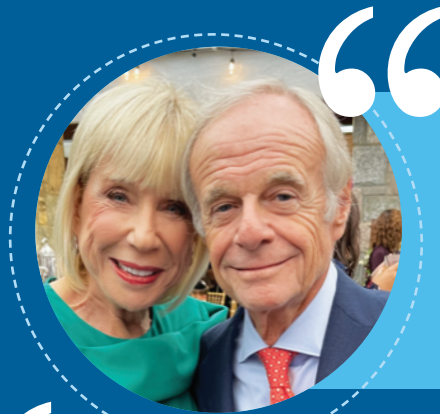
Teddy Conroy, '26)

Linda & Bill Rouse (*Hudson Messinger, '25*)

Corrine & Lenny Sands (*Isabel Sands, '27*)

Linda Rae Sher (z"l) (*Hudson Sher, '23; Brandon Sher, '25*)

**Brawerman GRANDparents donated a minimum of \$1,000 to this year's Annual Giving Campaign.*



It is an absolute joy to watch Maddie grow in so many meaningful ways at Brawerman. We are so appreciative of the teachers and staff for the exemplary dedication to their students and to the quality of education that this amazing institution provides."

- SUSAN CASTLE

Grandparent of Madeleine Ross



Nothing has given me greater joy than experiencing Brawerman with my children and their children - my grandchildren. It is a grandfather's dream to see happy, engaged, thoughtful, bright children with strong Jewish morals and values and an even stronger sense of self. Brawerman has really been such a gift to our entire family."

- DAVID GOLDBURG

Grandparent of Nate Klein, Charlie Klein, and Bernice McMordie



Brawerman is a wonderful school, with great Rabbis, teachers, administrators, security, and staff. It has been a privilege and an honor to be Brawerman grandparents. Seeing our grandchildren participate in Shabbat services, recite prayers in Hebrew, and know about and celebrate the customs of all of the Jewish holidays is just wonderful. The children are learning the appreciation and connections to the Jewish homeland of Israel. Important seeds are being planted by all of this. We are grateful to have all seven of our grandchildren begin their education at Brawerman."

- JANET AND LENNY ROSENBLATT

Grandparents of Chloe Conroy, Nathan Labranche, Sophia Labranche, and Teddy Conroy

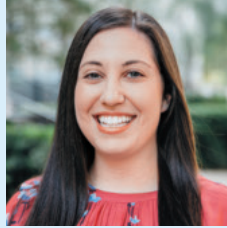


Fundraising & Engagement

REBECCA SPAIN DIRECTOR OF ADVANCEMENT

I always want to start out my Annual Report comments with a big resounding "Wow!" That is how I have felt for the last four years I have been at Brawerman, but this year I want to say it louder than ever. WOW! During an unprecedented time when it would have been easier to turn inward and remain isolated, our community showed up. Our families were more generous than ever and helped ensure that Brawerman was able to remain a safe and effective learning environment throughout the school year.

One hundred percent of Brawerman faculty, 97% of West families, and 87% of East families donated to the Annual Giving Campaign. This is a true testament to the strength and dedication of our community. I want to say a huge thank you to the East and West Annual Giving Co-Chairs, as well as to the members of our Endowment Committee. Your support, along with the support of the entire community, allowed us to bridge the budget gap, cover our unexpected expenses due to COVID-19, and ensure that Brawerman will be here for decades to come.



MORE THAN
\$700,000
spent in COVID-19
related expenses:

- NEARLY \$80,000 to support the BES@home remote learning program.
- MORE THAN \$335,000 on modifications to safely be able to return to campus.
- MORE THAN \$300,000 on additional personnel to support the BES@home program and to allow for smaller cohort sizes.

MORE THAN
\$25,000
from Brawerman
grandparents.

ALMOST
\$100,000

of additional financial
aid awarded to families
who were impacted by
COVID-19.

RAISED
MORE THAN
\$1.28 Million

for our
Annual Giving Campaign

to help offset operational
costs, update the school's
facilities, enhance programming,
provide professional development
opportunities for our staff,
and help cover significant
COVID-19 related expenses.

Hosted an Alumni
Snack and Shmooze

for the Brawerman
Class of 2015 Graduates.

Hosted two Lunch
and Learn events
for grandparents

on Zoom: one on the history of
Brawerman led by founding Head
of School Nadine Breuer and one
on celebrating Israel and Yom
Ha'atzmaut with Brawerman's
Rabbi Elissa Ben-Naim.

MORE THAN
**\$1.125
Million**

in new endowment
pledges.

50
Families

joined the Brawerman
Giving Circle by generously
donating gifts of \$10,000+
to Brawerman's Annual
Giving Campaign.





Endowment

Brawerman currently has more than \$9 million in cash and legacy pledges.

A robust endowment is an essential component for schools in a landscape of rising tuition costs and scholarship requests. It also allows us to support families and areas of need for Brawerman during times of crisis. This fund is a source of long-term support for the school. The principal is invested, and the yearly interest may be used to:

- Provide financial assistance
- Retain and recruit faculty
- Stabilize tuition
- Fund programs

Both Annual Giving and Endowment are critical to Brawerman's success:

- Annual Giving raises funds from all school families every year for current use
- Endowment provides for the future

Endowment gifts of \$25,000 and above will be recognized on our legacy walls on both campuses as well as in Brawerman and Wilshire Boulevard Temple publications. Opportunities are also available to endow special programs at the school.

CHAMPION

\$1,000,000+

Geri and Richard (z"l) Brawerman
Dana and Richard Pachulski
Talia and Jason Rimokh
The Shirken Family

LEADER

\$500,000 - \$999,999

Goldhirsh-Yellin Foundation,
in Memory of Bernard and
Wendy Goldhirsh

BUILDER

\$100,000 - \$249,999

Joli, Andrew, Liv, and Winston Altshule
Nadine Breuer Retirement Event
de Toledo Family Scholarship Fund
Rochelle and Jacob Glucksman
Goldstein Family Fund
Gretchen and Jon Klein

BENEFACTOR

\$50,000 - \$99,999

The Joseph Alexander Foundation
The Samuel Family
The Ullendorff Family

SUPPORTER

\$25,000 - \$49,999

Abrams Family Foundation
Allison and Larry Berg
Brawerman Alumni Association Fund
Brawerman Parent Association
Nadine and Steve Breuer
Robin and Elliott Broidy
Shelly and Mike Cohen and
Fran and Joel Parker, in Memory of
Sylvia and Mayer Gutman
The Essey Family
Sherri and John Fogelman
Julie Monkarsh Gadinsky

Margo E. Freedman and
David B. Goldman
Marsha and Fredrick Levin
Marcia and Doug Mankoff
Lauryn Harris and Greg Pimstone
Orit and Nadav Ravid
Michelle and Marc Rosenbach
Caleb Rosenblum '16 and
Micah Rosenblum '21
The Rosman Family, in Memory
of Lily and Don Rosman
The Sabet Family
Lauren and Anton Schiff
Caroline and Robby Soofer
Amy and Jeffrey P. Straus
The Waters Family



Endowment Committee: Lauryn Harris, Gretchen Klein, Margo Freedman, Jamie Sabet, Rochelle Glucksman, and Joli Altshule (Marsha Levin not pictured)

More than **\$9 Million** in cash and legacy pledges

This is a school we **love**. Let's **ensure** its future.



2020-2021

Annual Giving Campaign

Brawerman's Annual Giving Campaign (AGC) raised more than \$1.2 million, exceeding our goal of \$950,000. AGC contributions make up 10% of Brawerman's operating budget, which represents 59% of the total proceeds of the Annual Giving Campaign.

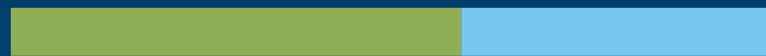
The funds raised during the AGC are vital to every part of the annual operating budget and enable Brawerman to continue growing and making investments in our facilities, education specialists, new teachers and administrators, and ongoing, enhanced programs for our students.

59%
Operating
Budget

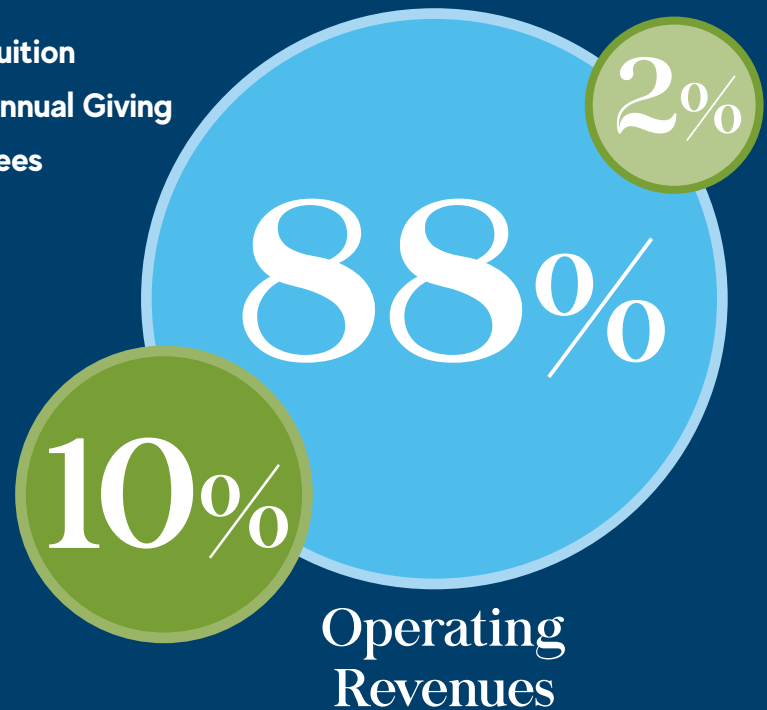
41%

- Professional Development
- Specialists & Additional Teachers
- Enhanced Programming
- Technology for *BES@home*
- Facility Modifications to Return Safely to Campus

- Tuition
- Annual Giving
- Fees



Annual Giving
\$1,281,356





2020-21

Annual Giving Campaign

Brawerman reached 87% participation from East families, 97% participation from West families, and 100% participation from faculty, and we surpassed 100% of our financial goal!

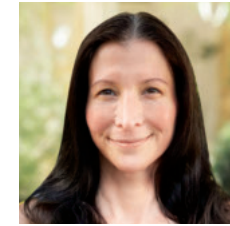
We raised \$1,281,356 to help offset operational costs, update the school's facilities, provide professional development opportunities for our staff, and so much more.

Brawerman Giving Circle

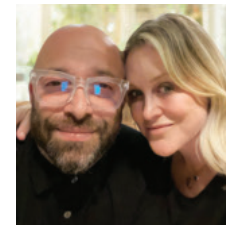
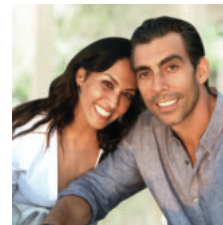
BENEFACTOR (\$25,000+)

The Berman Family
Lissa and Adam Chesnoff
Amy and Brad Conroy
Nahal and Kevin Danesh
The Essey Family

The Goldhirsh-Yellin Foundation
Goldstein Family Fund
Dorit and Adir Haroni
Gretchen and Jon Klein
Jason and Talia Rimokh
The Rosenberg Family
Wendy Sacks and Steven Sklaver



Annual Giving Co-Chairs (East):
Alisha Pedowitz,
Jessica Lewensztain,
and Julie Gerber



Annual Giving Co-Chairs (West):
Natalie & Steven
Taylor, Kara & Brad
Slater, and Nahal &
Kevin Danesh

PILLAR

(\$18,000-\$24,999)

The Michiel Family
The Silverman Family
Kara and Brad Slater

LEADERSHIP

(\$10,000-\$17,999)

The Joseph Alexander Foundation
The Alpern Family
Joli and Andrew Altshule
Anonymous
Claudia and Roberto Apelfeld
Ghazal and Houman Bana
The Feldman Family
Stefanie and Jason Finger
The Gerber Family
Charlotte and Gary Gilbert
Rochelle and Jacob Glucksman
Robin and Laurence Hilman
Gina and Stuart Katz

Michelle and Morris Kokhab
Jodi and Dana Kravetz
The Kuperstock Family
Talia and Martin Lesak
Alison and Ben Levine
Diana and David Makkabi
Jannelle and Benjamin Ross
The Sabet Family
The Samuel Family
Beth and Michael Sands
The Schechter Family
Gina and Todd Schwartz
Pegah and Payam Shahian
Sarah and Adam Sher
Anat and Joe Simantob
Marin and Ross Sklar
Amy and Jeffrey P. Straus
The Taylor Family
Steven and Stephanie Teitelbaum
Bonnie and Bill Todman, Jr.
Deborah and David Tractenberg
Andy and Liz Waters



PATRON

(\$7,200-\$9,999)

Sharon and David Akhtarzad
Fiona and Ari David
Behnoosh and Michael Farzam
Jennifer and Manny Labranche
Tannaz and Simon Lavi
Imbar Sagi-Lebowitz and
Stuart Lebowitz
Genna and Robert Liebesman
Stacey and Barak Lurie
Rebecca and Joel Mandel
Julia and David Ramin
Caroline and Robby Soofer
Rachel and Pouya Yadegar

SUPPORTER

(\$3,600-\$7,199)

Sally and Jack Azad
Carolyn and Rob Becher
Arezou and Stephan Berghoff

Lynette and Derek Brown
Susan and Michael Castle
Demetra and Ari Chazanas
Lina and Michael Cohan
Karen and Brandon Cohen
Nicole and Ronn Davids
Sarah and Andrew Ellenbogen
Maile Moore and Robert Ellin
Marianna and Yoel Flohr
Lisa and Alex Fridman
Samantha and Jordan Friedman
Suzanne and Jacob Gehl
Jennifer and Michael Ghozland
Christina and Joshua Glotzer
Sarah Rettinger and
Jonathan Goldman
Lisa and Sam Gorodistian
Brooke and Kenneth Halsband
Neda and Cyrus Harouni
Deborah and Joshua Heald
Dana and Jeff Hynick
Bethany Grabiec and Matthew Jacobs
Opal and David Judaken
Bita and Shadi Kamran
Sharona and Foo Katan
Jennifer and Eric Kaufman
Anat and Ynon Kreiz
Randy and Daniel Lee
Jessica and Lior Lewensztain
Maryam and Josh Lieberman
Loris and Kory Lunsford
Claire and Christopher Markus
Lindsey Goldberg and Alec McMordie
Heather and Scott Menkus
Rena and Alex Merino
Staci and Adam Miller
Ronit and Sam Moradzadeh

Michelle and Gregory Nathan
Jennifer and Zev Norotsky
Samantha and Michael Nussbaum
Charlotte and Richard Offsay
Dana and David Pogoda
Orit and Nadav Ravid
Carrie and Evan Rifkin
Raina and David Rosenblum
Stephanie and Craig Rutenberg
Alexis and Jason Schutzer
Lauren and Andrew Schwartz
Nicole and Steve Seigel
Melissa and Mark Shabason
Jayne and Scott Sherr
Kelly and Matt Sloan
Pam and Stephen Soller
Neda and Danny Sooferian
Amy and Jacob Weber
Alyssa and Steve Weinberger
Julie and Rusty Weiss
Shirin and Peyman Yadegar
Nadine and Zach Zysman

DONOR

(up to \$3,599)

Lida Abramov
Christine Ahn
Alexis and Blake Alban
Laurie and Steve Albert
Hillary and David Allen
Will Alvarado
Leslie Appelbaum
Orie Argamany
Ada Arita
Karen Yenofsky and William Askins
Miri Avraham

Kevin Ayala
Nooshin Messian and Igal Bakshandeh
Barbara and Brad Ballard
Alexis Barbag
Lia and Gabriel Barenfeld
Emily Barnett
Rabbi Elissa and Gal Ben-Naim
Ari Ben-Naim
David Ben-Naim
Yoni Ben-Naim
Ana Bercovici
Sahar and Ophir Bitton
Helena and David Bloch
Megan and Craig Bloom
Geri Brawerman
Deborah and Richard Brutchey
Hillary Chesler
Lisa Eppel and Craig Chisvin
Adrienne Coffield
Shelly and Mike Cohen
Chesley Cunningham
Darline Cuevas and Randy Curtis
Judith Daniels
Susie and Ben David
Matthew Davidson
Auriane Desombre
Karen and Michael DeVore
Chloe Director
Christopher Donohoe
Tanya and Michael Dorff
Mark Dorner
Helen and Gary Dosik
Tova Leibovic-Douglas and
Austin Douglas
An East Pioneer Family
Debbie and Mike Ebrahimi
Courtney Edson



Monika and Yuval Eitan
 Amanda Elander
 Linda and Larry Elins
 Stephanie and Rabbi David Eshel
 Rozita Farahdel
 Gillian and Adam Feldman
 Chelsea File
 Rachel and Ian Fischler
 Deena and Adam Fleiner
 Fernanda and Jonathan Flicker
 Christine Flynn
 Nina and Steven Freund
 Talia and Tyler Friedman
 Joey Frisina
 Amy Wakeland and Eric Garcetti
 Lucy and Gregory Gelfan
 Isai German
 Haley Ginsberg
 Jaimie Glasson
 Janet and Bill Glucksman
 Lindy Goldberg

David Goldberg
 Dikla and Guy Goldshmit
 Amy and Stuart Graiwer
 Lindsay Astor Grant and Robert Grant
 Noa Grant
 Bruce Green
 Elisabeth Grossman
 Jasmin and Austin Hai
 Carly Handelman
 Michelle Handzo
 Romy Harari
 Chloe Beckerman and Justin Hardt
 Yonit Harounian
 Salli Harris
 Trisha Harrison
 Irena Hazon
 Nicole Hebert
 Luke Heller
 Tamara Hirsch
 Leah Hochman
 Oriana Horowitz

Laura Hussey
 Jeff Imerman
 Allison Inoshita
 Ellie and Simon Javaheri
 Erin Jacobs
 Michelle and Maxwell Kaizer
 Ben Kamer
 David Kaminow
 Rambod Kamrava
 Joshua Karbelnig
 Noa and Josh Keimach
 Maxine Keith
 Anne and Brian Kessler
 Sarah Kitchens
 Linda Z. Klein
 Nomi Shichor and Michael Koepke
 Lauren Moshi and Bradley Kramer
 Charlie Kramer
 Jane Kramer
 Rachel and Steve Kroll
 Rachel Kupferberg
 Ariel and Maximo Langer
 Diana and Richard Leher
 Peter Levenson
 Amanda Levin and Neil Leventhal
 Marsha and Fredrick Levin
 Jordan Levine
 Donald Levy
 Charlie Lewenzstain
 Mila Lewenzstain
 Sharon and Darren Lewin
 Elinor and Jonathan Lewis
 Hannah Liberman
 Susie and Stew Lieberman
 Adena Loewenthal
 Yvette Lopez
 Jamie and Douglas Lynn
 Dafna Ben-Gera and Samson Lov

Linda F. Lynn
 Amanda and Scott Madison
 Limor Magen
 Jennifer Maman
 Phyllis Ribakoff and José Mandes
 Parastou and Joseph Mann
 Ziba and Shahbod Mansoury
 Stephanie and Brian Mau
 Jessica Meisels
 Alexis and Michael Messinger
 Jessica Mackenzie and Daniel Miller
 Paula and Jim Miller
 Sarah Moody
 Rebecca Moray
 Karen Morgenstern
 Sara and Burton Morris
 Kayla Morris
 Randi and Patrick Moss
 Donna Nadel
 Natale and Dan Naim
 Desiree and David Nazarian
 Carolyn and Matthew Negrin
 Kirin and Babak Nehoray
 Marlee Nesser
 Valeria Nevarez
 Julia and Rabbi Joel Nickerson
 Charlene Niku
 Yolanda Ornelas
 Sharon and Simon Ourian
 Fran and Joel Parker
 Samantha Parker
 Ashley Paul
 Alisha Pedowitz
 David Pedowitz
 Jonah Phillips
 Yael Koren and Eran Pick
 Lauryn Harris and Greg Pimstone
 Liz and Michael Platt



2020-21
Annual
Giving
Campaign

Amanda Pleau
Wendy and Joshua Popkin
Melissa and David Presby
Stacey Price
Sharon and Nader Ramzi
Orly Renetzky
Nancy and Jack Ribakoff
Michelle and Keith Richman

Gail Robillard
Danielle Rosenbach
Florny and Daniel Rosenberg
Janet and Lenny Rosenblatt
Gillian and Ira Rosensweig
Isabel Rosenthal
Jessica Rosner
Alexis and Seth Ross
Linda and Bill Rouse
Sally and Omid Sakhai
Marla Saltzman
Fariba Sameyah
Corrine and Lenny Sands
Natalie and Gil Saraf
Cami and Scott Sargent
Barry Schapira
Nicole Schnider
Mauricio Schwartzman
Schuyler and Michael Schwimer
Carrie and Ben Scott
Danielle Sebring
Jason Serrano

Erica and Steven Sesar
Galite and David Shafer
Jennifer and Farbod Shakouri
Linda Rae Sher (z"l)
Lisa and Alan Sher
Sima and Peter Sherman
Jayne and Scott Sherr
Emily Wagner and Jayson Shore
Jodi Shorr
Jenny and Rony Shram
Kara and Seth Silverman
Melanie Silvernail
Dori and Larry Simon
Benjamin Siskin
Sara and Larry Sloan
Joanne Nabelsky and Emilio Smeke
Tatiana and Leo Smirnov
Jessica and Boris Solodkiy
Andrea Stein
Hanit Stern
Selena and Nick Sternberg
Rebecca Spain
Jae Steinic
Santiago Svidler
Jacob Sweetow
Gila Tabibian
Julie Tasoff
Ariana Urbont and William Taylor
Lee Tenerowicz
Angie and Josh Tepper
Bic Thatawat
LaNina Thomas
Carrie and Daniel Tischler
Bonnie Tucker and Scott Tommey
Limor and David Vidor
Angelica Villalobos
Michelle and Peter Vogel
Amy and Jacob Weber

Andrea Weinstein
Dorie Weiss and Ryan Weinstein
Gilad Weisner
Jill Weiss
Tali and Jordan Weiss
Jennifer and David Wiener
Melody and Roby Yadegar
Hofit De Levie and Hanan Yochelman
Jayme Zahavi
Joseph Zipkin
Jenny and Ronen Zipkin
Orit Ziv
Debbie Zolla

COMMUNITY SPONSORS

BJE: Builders of Jewish Education
The Jewish Federation of
Greater Los Angeles
Ralph's Community Contribution
Program



Thank you
to the entire Brawerman
community for your generosity.

We deeply appreciate your
support and commitment
to this campaign. We could not
have succeeded without each
and every one of you!



AND NORMAN LOUIS COURTYARD AND DONOR WALL

PATRON BENEFACTORS

ALAN AND STANLEY WEIN
JONCE AND LAWRENCE ROSEBLI FAMILY
JONATHAN AND LEONARD STRAUSS
In memory of CLAUDE AND ROBERT BORLIN
ALAN AND PAUL SENNER
LENE AND BRAD SENNER
LARRY AND BRAD SENNER
LINDA AND RICHARD WEBER
In memory of SCOTT ELIOTT SENNER
SUSAN AND PERRY SENNER
SUSAN AND MICHAEL SOROKIN
NANCY AND BRUCE NEWBERG
SUSAN AND BILL BRADEN

LEGACY BENEFACTORS

THE BEFFLEY FAMILY FOUNDATION
DENISE AND ELIOTT WEBER
ALAN AND BERNARD HARRIS
ALAN AND JACK D. MYER FAMILY
MIRIAM AND RICHARD FUCHSBERG
MIRIAM AND MYRON HARRI, LEVI AND FAMILY
MIRIAM JUDAN FOUNDATION, INC.
MIRIAM AND FAMILY
CATHY AND MARK SEGEL
STEVEN AND JUDITH L. METZUS
JEAN DRISCOLL AND L. METZUS
JANET DRISCOLL AND L. METZUS
KARL HARVEY J. METZUS, A. FELDS
ELAINE AND BRADY METZUS
MIRIAM AND LAWRENCE METZUS
RICHARD KACAN FAMILY

LEGACY BENEFACTORS

JANE AND DAVID FRIEDY
CICILE C. BARTMAN
BARBARA AND DR. ALAN SHARD
AND SETH AND BRENDA
JACOB AND STONEY ROSENBERG
ALAN ROSEN
ALAN SHERIDY
DANIE AND GARFONDO GLAZER
BARBARA DANIEL SHERIDY CHILDHOOD CENTER FUND
NATHAN FAMILY FUND
JACK SHERIDAN
ALISON AND STEVEN SHERIDY
THE WOOSTER FAMILY
In loving memory of EDWARD WOOSTER

BOARD OF TRUSTEES (1995-1996)

ALAN A. BROWN, Chairman
ALAN A. BROWN, Vice Chairman
ALAN A. BROWN, Secretary
ALAN A. BROWN, Treasurer
ALAN A. BROWN, Director
ALAN A. BROWN, Director
ALAN A. BROWN, Director
ALAN A. BROWN, Director
ALAN A. BROWN, Director
ALAN A. BROWN, Director

BOARDING COMMITTEE

ALAN A. BROWN, Chairman
ALAN A. BROWN, Vice Chairman
ALAN A. BROWN, Secretary
ALAN A. BROWN, Treasurer
ALAN A. BROWN, Director
ALAN A. BROWN, Director
ALAN A. BROWN, Director
ALAN A. BROWN, Director
ALAN A. BROWN, Director
ALAN A. BROWN, Director



EAST CAMPUS
3663 Wilshire Boulevard
Los Angeles, CA 90010

WEST CAMPUS
11661 W. Olympic Boulevard
Los Angeles, CA 90064

Non-Profit Org.
US Postage
Paid
Los Angeles CA
Permit# 2112

BRAWERMAN ADMINISTRATION

Brandon Cohen, *Head of School*

BES EAST

Nadine Zysman, *Principal & Assistant Head of School*
Noa Grant, *Assistant Principal*
Danielle Sebring, *Assistant Principal*
Chris Donohoe, *Director of Admissions*

BES WEST

Andrea Weinstein, *Principal*
Rabbi Elissa Ben-Naim, *Director of Jewish Life and Learning*
Gillian Feldman, *Assistant Principal*
Michelle Handzo, *Assistant Principal*
Lindy Goldberg, *Director of Admissions*
.....
Rebecca Spain, *Director of Advancement*

For information on how to support Brawerman,
contact Rebecca Spain at (424) 208-8944
or rspain@brawerman.org.

BRAWERMAN MISSION STATEMENT

We provide an unparalleled educational experience rooted in Jewish values - inspiring innovative thinking, empowering responsible leadership, and honoring individuality within a nurturing community.

WILSHIRE BOULEVARD TEMPLE CLERGY

Rabbi Steven Z. Leder, *Pritzker Chair, Senior Rabbis*
Cantor Don Gurney
Rabbi Elissa Ben-Naim
Rabbi David Eshel
Rabbi M. Beaumont Shapiro
.....
Rabbi Susan Nanus
Rabbi Joel Nickerson
Cantor Lisa Peicott
Rabbi Joel Simonds
Cantor Kerith Spencer-Shapiro

BOARD OF TRUSTEES

Scott Edelman, *President*
Rebecca Jonah, *Vice President*
Caroline Kuperstock, *Vice President*
Kevin Neustadt, *Vice President*
Simon Furie, *Treasurer*
Claire Goldsmith, *Secretary*
Jeffrey H. Cohen
Deborah Dragon
Carolyn Enenstein
Jennifer Haarman
Charles Hirschhorn
Skip Kessler
Fern Topas Salka
Reagan Silber
Skip Victor
.....
David Wimmer
Robin Zucker
Michael Swartz, *Counsel*
Alberto Valner, *Immediate Past President*
.....
Honorary Board Members
Howard M. Bernstein, Audrey Irmas,
Julie Miller, Richard Pachulski
.....
Donna S. Nadel, *Executive Director*
Naomi Reem, *Executive Director of Education*
Jodi Berman, *Associate Executive Director*
Douglas Lynn, *Associate Executive Director*
Toby Berkow, *Associate Executive Director*

EDUCATION & SCHOOL GOVERNANCE COMMITTEE FOR WILSHIRE BOULEVARD TEMPLE SCHOOLS

Caroline Kuperstock, *Chair*
Dena Bloom
Ronn Davids
Deborah Dragon
Claire Goldsmith
Brian Milder
Lauryn Harris-Pimstone
Rebecca Jonah
Bruce Rosenbloom
Jenny Zipkin

