

# ACT TEST

## 2021-2022



HIGH SCHOOL CODE: 450418

TEST CENTER CODE: 224300

### ALL JUNIORS WILL TAKE A FREE ACT TEST ON MARCH 8th AT SYRACUSE HIGH

Students will register for this free test at school, all other test registrations must be completed online.

#### ACT TEST \$60.00

(Basic fee includes sending scores to four college choices)

#### WRITING TEST + \$25.00

(Optional, does not affect overall score.)

LATE REGISTRATION - (Additional \$36.00)

| ACT TEST DATE                         | REGISTRATION DEADLINE | LATE REGISTRATION |
|---------------------------------------|-----------------------|-------------------|
| September 11, 2021                    | August 6              | August 20         |
| October 23, 2021                      | September 17          | October 1         |
| December 11, 2021                     | November 5            | November 19       |
| February 12, 2022                     | January 7             | January 21        |
| April 2, 2022                         | February 25           | March 11          |
| June 11, 2022                         | May 6                 | May 20            |
| July 16, 2022<br>(Not offered at SHS) | June 17               | June 24           |

### REGISTRATION

→ REGISTER ONLINE at [www.actstudent.org](http://www.actstudent.org)

High School Code: 450418

Test Center Code: 224300

- Students of financial need (fee waiver/free or reduced lunch) are eligible for 2 free tests: one junior year and one senior year. See Mrs. Ogan in the Counseling Center to receive your test voucher.
- Students with an IEP or 504 must coordinate with their IEP file manager or 504 coordinators to make arrangements with ACT to receive accommodations. It takes ACT 7-8 weeks to review accommodations. Note, not all accommodations are granted.
- Test Information Release: receive test questions, answer key, and a list of your answers—available only December, April, and June. (Additional \$30—optional)

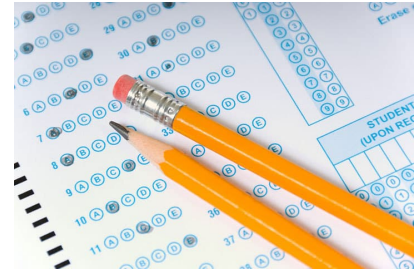
## TESTS ARE TAKEN AT SYRACUSE HIGH ON SATURDAYS

### On the Day of the Test:

- Arrive at Syracuse High by **7:45 a.m.** to find your room assignment.
- Bring photo identification, your test center admission ticket, three No. 2 pencils, and an approved calculator for the math test.

Residual ACT Tests are available at WSU ([www.weber.edu/TestingCenter](http://www.weber.edu/TestingCenter)). Register with Student Services Testing Center. Tests are only valid at the location taken.

# ACT or SAT



**PURPOSE:** College admission index requirement  
 Placement into college classes - English and math  
 Academic scholarships from universities

**TAKE IT 2-3 TIMES AFTER SECONDARY MATH II OR DURING YOUR JUNIOR YEAR**

| ACT  | SAT 1 or SAT 11  |
|--|--|
| www.actstudent.org                         | www.collegeboard.com   |
| English, Math Science, and Reading Tests   | SAT 1 Verbal and Math Tests<br>SAT 11 Subject Tests                          |
| Accepted by all universities in the U.S.   | Required by some universities outside of Utah—<br>mainly east and west coast |
| Offered 6 times a year at SHS on Saturdays | Offered at local universities—check with the<br>testing department.          |

## PRACTICE WEBSITES

www.act.org, www.collegeboard.com, testprepreview.com, march2success.com, www.kaplan.com, academy.act.org

SHS generally offers two prep classes in February after school prior to the Free Junior ACT. The sign up is in the main office. It will be advertised via email and on the announcements.

## ADMISSION INDEX FOR UTAH'S PUBLIC COLLEGES AND UNIVERSITIES

|             |      | Typical Scholarship Range |     |     |     |     |     |     |     |     |     |     |     |     |     |     |     | Admission to College Minimum 80-95 (varies) |     |     |     |     |     |     |     |     |     |     |     |     |     |  |  |
|-------------|------|---------------------------|-----|-----|-----|-----|-----|-----|-----|-----|-----|-----|-----|-----|-----|-----|-----|---|-----|-----|-----|-----|-----|-----|-----|-----|-----|-----|-----|-----|-----|--|--|
| Test Scores |      | GPA                       |     |     |     |     |     |     |     |     |     |     |     |     |     |     |     |   |     |     |     |     |     |     |     |     |     |     |     |     |     |  |  |
| ACT         | SAT  | 4.0                       | 3.9 | 3.8 | 3.7 | 3.6 | 3.5 | 3.4 | 3.3 | 3.2 | 3.1 | 3.0 | 2.9 | 2.8 | 2.7 | 2.6 | 2.5 | 2.4   | 2.3 | 2.2 | 2.1 | 2.0 | 1.9 | 1.8 | 1.7 | 1.6 | 1.5 | 1.4 | 1.3 | 1.2 | 1.1 |  |  |
| 36          | 1600 | 142                       | 140 | 139 | 137 | 135 | 133 | 132 | 130 | 128 | 126 | 124 | 123 | 121 | 119 | 117 | 116 | 114   | 112 | 110 | 108 | 107 | 105 | 103 | 101 | 100 | 98  | 96  | 94  | 93  | 91  |  |  |
| 35          | 1580 | 140                       | 138 | 137 | 135 | 133 | 131 | 130 | 128 | 126 | 124 | 122 | 121 | 119 | 117 | 115 | 114 | 112   | 110 | 108 | 106 | 105 | 103 | 101 | 99  | 98  | 96  | 94  | 92  | 91  | 89  |  |  |
| 34          | 1530 | 138                       | 136 | 135 | 133 | 131 | 129 | 128 | 126 | 124 | 122 | 120 | 119 | 117 | 115 | 113 | 112 | 110   | 108 | 106 | 104 | 103 | 101 | 99  | 97  | 96  | 94  | 92  | 90  | 89  | 87  |  |  |
| 33          | 1460 | 136                       | 134 | 133 | 131 | 129 | 127 | 126 | 124 | 122 | 120 | 118 | 117 | 115 | 113 | 111 | 110 | 108   | 106 | 104 | 102 | 101 | 99  | 97  | 95  | 94  | 92  | 90  | 88  | 87  | 85  |  |  |
| 32          | 1410 | 134                       | 132 | 131 | 129 | 127 | 125 | 124 | 122 | 120 | 118 | 116 | 115 | 113 | 111 | 109 | 108 | 106   | 104 | 102 | 100 | 99  | 97  | 95  | 93  | 92  | 90  | 88  | 86  | 85  | 83  |  |  |
| 31          | 1306 | 133                       | 131 | 130 | 128 | 126 | 124 | 123 | 121 | 119 | 117 | 115 | 114 | 112 | 110 | 108 | 107 | 105   | 103 | 101 | 99  | 98  | 96  | 94  | 92  | 91  | 89  | 87  | 85  | 84  | 82  |  |  |
| 30          | 1320 | 131                       | 129 | 128 | 126 | 124 | 122 | 121 | 119 | 117 | 115 | 113 | 112 | 110 | 108 | 106 | 105 | 103   | 101 | 99  | 97  | 96  | 94  | 92  | 90  | 89  | 87  | 85  | 83  | 82  | 80  |  |  |
| 29          | 1280 | 129                       | 127 | 126 | 124 | 122 | 120 | 119 | 117 | 115 | 113 | 111 | 110 | 108 | 106 | 104 | 103 | 101   | 99  | 97  | 95  | 94  | 92  | 90  | 88  | 87  | 85  | 83  | 81  | 80  | 79  |  |  |
| 28          | 1240 | 127                       | 125 | 124 | 122 | 120 | 118 | 117 | 115 | 113 | 111 | 109 | 108 | 106 | 104 | 102 | 101 | 99  | 97  | 95  | 93  | 92  | 90  | 88  | 86  | 85  | 83  | 81  | 79  | 78  | 76  |  |  |
| 27          | 1210 | 126                       | 124 | 123 | 121 | 119 | 117 | 116 | 114 | 112 | 110 | 108 | 107 | 105 | 103 | 101 | 100 | 98  | 96  | 94  | 92  | 91  | 89  | 87  | 85  | 84  | 82  | 80  | 78  | 77  | 75  |  |  |
| 26          | 1170 | 124                       | 122 | 121 | 119 | 117 | 115 | 114 | 112 | 110 | 108 | 106 | 105 | 103 | 101 | 99  | 98  | 96  | 94  | 92  | 90  | 89  | 87  | 85  | 83  | 82  | 80  | 78  | 76  | 75  | 73  |  |  |
| 25          | 1140 | 122                       | 120 | 119 | 117 | 115 | 113 | 112 | 110 | 108 | 106 | 104 | 103 | 101 | 99  | 97  | 96  | 94  | 92  | 90  | 88  | 87  | 85  | 83  | 81  | 80  | 79  | 76  | 74  | 73  | 71  |  |  |
| 24          | 1100 | 120                       | 118 | 117 | 115 | 113 | 111 | 110 | 108 | 106 | 104 | 102 | 101 | 99  | 97  | 95  | 94  | 92  | 90  | 88  | 86  | 85  | 83  | 81  | 79  | 78  | 76  | 74  | 72  | 71  | 69  |  |  |
| 23          | 1060 | 118                       | 116 | 115 | 113 | 111 | 109 | 108 | 106 | 104 | 102 | 100 | 99  | 97  | 95  | 93  | 92  | 90  | 88  | 86  | 84  | 83  | 81  | 79  | 77  | 76  | 74  | 72  | 70  | 69  | 67  |  |  |
| 22          | 1030 | 117                       | 115 | 114 | 112 | 110 | 108 | 107 | 105 | 103 | 101 | 99  | 98  | 96  | 94  | 92  | 91  | 89  | 87  | 85  | 83  | 82  | 80  | 79  | 76  | 75  | 73  | 71  | 69  | 68  | 66  |  |  |
| 21          | 990  | 115                       | 113 | 112 | 110 | 108 | 106 | 105 | 103 | 101 | 99  | 97  | 96  | 94  | 92  | 90  | 89  | 87  | 85  | 83  | 81  | 80  | 79  | 76  | 74  | 73  | 71  | 69  | 67  | 66  | 64  |  |  |
| 20          | 950  | 113                       | 111 | 110 | 108 | 106 | 104 | 103 | 101 | 99  | 97  | 95  | 94  | 92  | 90  | 88  | 87  | 85  | 83  | 81  | 79  | 78  | 76  | 74  | 72  | 71  | 69  | 67  | 65  | 64  | 62  |  |  |
| 19          | 910  | 111                       | 109 | 108 | 106 | 104 | 102 | 101 | 99  | 97  | 95  | 93  | 92  | 90  | 88  | 86  | 85  | 83  | 81  | 79  | 77  | 76  | 74  | 72  | 70  | 69  | 67  | 65  | 63  | 62  | 60  |  |  |
| 18          | 860  | 109                       | 107 | 106 | 104 | 102 | 100 | 99  | 97  | 95  | 93  | 91  | 90  | 88  | 86  | 84  | 83  | 81  | 79  | 77  | 75  | 74  | 72  | 70  | 68  | 67  | 65  | 63  | 61  | 60  | 58  |  |  |
| 17          | 820  | 108                       | 106 | 105 | 103 | 101 | 99  | 98  | 96  | 94  | 92  | 90  | 89  | 87  | 85  | 83  | 82  | 80  | 78  | 76  | 74  | 73  | 71  | 69  | 67  | 66  | 64  | 62  | 60  | 59  | 57  |  |  |
| 16          | 770  | 106                       | 104 | 103 | 101 | 99  | 97  | 96  | 94  | 92  | 90  | 88  | 87  | 85  | 83  | 81  | 80  | 79  | 76  | 74  | 72  | 71  | 69  | 67  | 65  | 64  | 62  | 60  | 58  | 57  | 55  |  |  |
| 15          | 720  | 104                       | 102 | 101 | 99  | 97  | 95  | 94  | 92  | 90  | 88  | 86  | 85  | 83  | 81  | 79  | 78  | 76  | 74  | 72  | 70  | 69  | 67  | 65  | 63  | 62  | 60  | 58  | 56  | 55  | 53  |  |  |
| 14          | 670  | 102                       | 100 | 99  | 97  | 95  | 93  | 92  | 90  | 88  | 86  | 84  | 83  | 81  | 79  | 77  | 76  | 74  | 72  | 70  | 68  | 67  | 65  | 63  | 61  | 60  | 58  | 56  | 54  | 53  | 51  |  |  |
| 13          | 600  | 100                       | 98  | 97  | 95  | 93  | 91  | 90  | 88  | 86  | 84  | 82  | 81  | 79  | 77  | 75  | 74  | 72  | 70  | 68  | 66  | 65  | 63  | 61  | 59  | 58  | 56  | 54  | 52  | 51  | 49  |  |  |
| 12          | 540  | 99                        | 97  | 96  | 94  | 92  | 90  | 89  | 86  | 85  | 83  | 81  | 80  | 79  | 76  | 74  | 73  | 71  | 69  | 67  | 65  | 64  | 62  | 60  | 58  | 57  | 55  | 53  | 51  | 50  | 48  |  |  |
| 11          | 480  | 97                        | 95  | 94  | 92  | 90  | 88  | 87  | 85  | 83  | 81  | 79  | 78  | 76  | 74  | 72  | 71  | 69  | 67  | 65  | 63  | 62  | 60  | 58  | 56  | 55  | 53  | 51  | 49  | 48  | 46  |  |  |
| 10          | 430  | 95                        | 93  | 92  | 90  | 88  | 86  | 85  | 83  | 81  | 79  | 77  | 76  | 74  | 72  | 70  | 69  | 67  | 65  | 63  | 61  | 60  | 58  | 56  | 54  | 53  | 51  | 49  | 47  | 46  | 44  |  |  |
| 9           | 400  | 93                        | 91  | 90  | 88  | 86  | 84  | 83  | 81  | 79  | 77  | 75  | 74  | 72  | 70  | 68  | 67  | 65  | 63  | 61  | 59  | 58  | 56  | 54  | 52  | 51  | 49  | 47  | 45  | 44  | 42  |  |  |
| 7           | 350  | 90                        | 88  | 87  | 85  | 83  | 81  | 80  | 79  | 76  | 74  | 72  | 71  | 69  | 67  | 65  | 64  | 62  | 60  | 58  | 56  | 55  | 53  | 51  | 49  | 48  | 46  | 44  | 42  | 41  | 39  |  |  |
| 6           | 320  | 88                        | 86  | 85  | 83  | 81  | 79  | 78  | 76  | 74  | 72  | 70  | 69  | 67  | 65  | 63  | 62  | 60  | 58  | 56  | 54  | 53  | 51  | 49  | 47  | 46  | 44  | 42  | 40  | 39  | 37  |  |  |
| 5           | 290  | 86                        | 84  | 83  | 81  | 79  | 77  | 76  | 74  | 72  | 70  | 68  | 67  | 65  | 63  | 61  | 60  | 58  | 56  | 54  | 52  | 51  | 49  | 47  | 45  | 44  | 42  | 40  | 38  | 37  | 35  |  |  |