

From the Nurse

Greetings King students and families. As we start our new school year, we want everyone to remain as healthy as possible.

Please remember the following:

-Students who are sick should stay home until symptoms are resolved. If they have covid-like symptoms, the health department recommends getting tested.

-If any student has had close contact with someone who has tested positive for Covid-19, please contact the school to discuss return dates for that student.

-If someone in the household is being tested for covid and has symptoms (this does not include serial testing for employment or other reasons) the students in the household need to remain home until the results of that test are received.

When in doubt, please call the school for guidance. Thank you all for helping to stop the spread of illness!

Warm Regards,

Janine Kappelmann BSN, RN
School Nurse
Widefield District 3
Cell: 719-290-6423



Birthdays are important!

All treats for birthdays and designated school-wide celebrations must be **store purchased** and brought to the Front Office 24 hours in advance

OR

the teacher must be notified 24 hours in advance with what food item is being brought in.

Food items must have both an **Ingredients label** and a **Nutrition Facts label** on the packaging.

There must be **0g Trans Fat** in the product.

This is in accordance with WSD3's Student Wellness Policy.

Treats brought to the office without 24-hour notice or without both labels, cannot be served to students!

We do have several students with allergies, we would encourage parents to think about sending non-food item instead of an edible treat.

Thank you for your assistance in keeping our students healthy and safe!

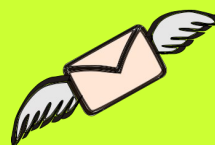


Parents and Visitors to King Elementary

No volunteers or visitors are allowed in the building at the moment.

If you need to meet with a teacher please schedule an appointment a head of time.

Thank you for your understanding!



End of the Day Messages for Students:

(Please honor our hours and keep your child(ren) in school all day)

Please call the office **BEFORE 3:00 pm.**

There will be **NO** early checkout after 3:00 pm!