

9/7/21 COVID-19 HEALTH DATA UPDATE

Briefings are posted on our website at www.tulsaschools.org.



High level assessment from 9/7 health data review

Foundational Health Care Metrics

- Local county rates rising slightly but at a slower rate

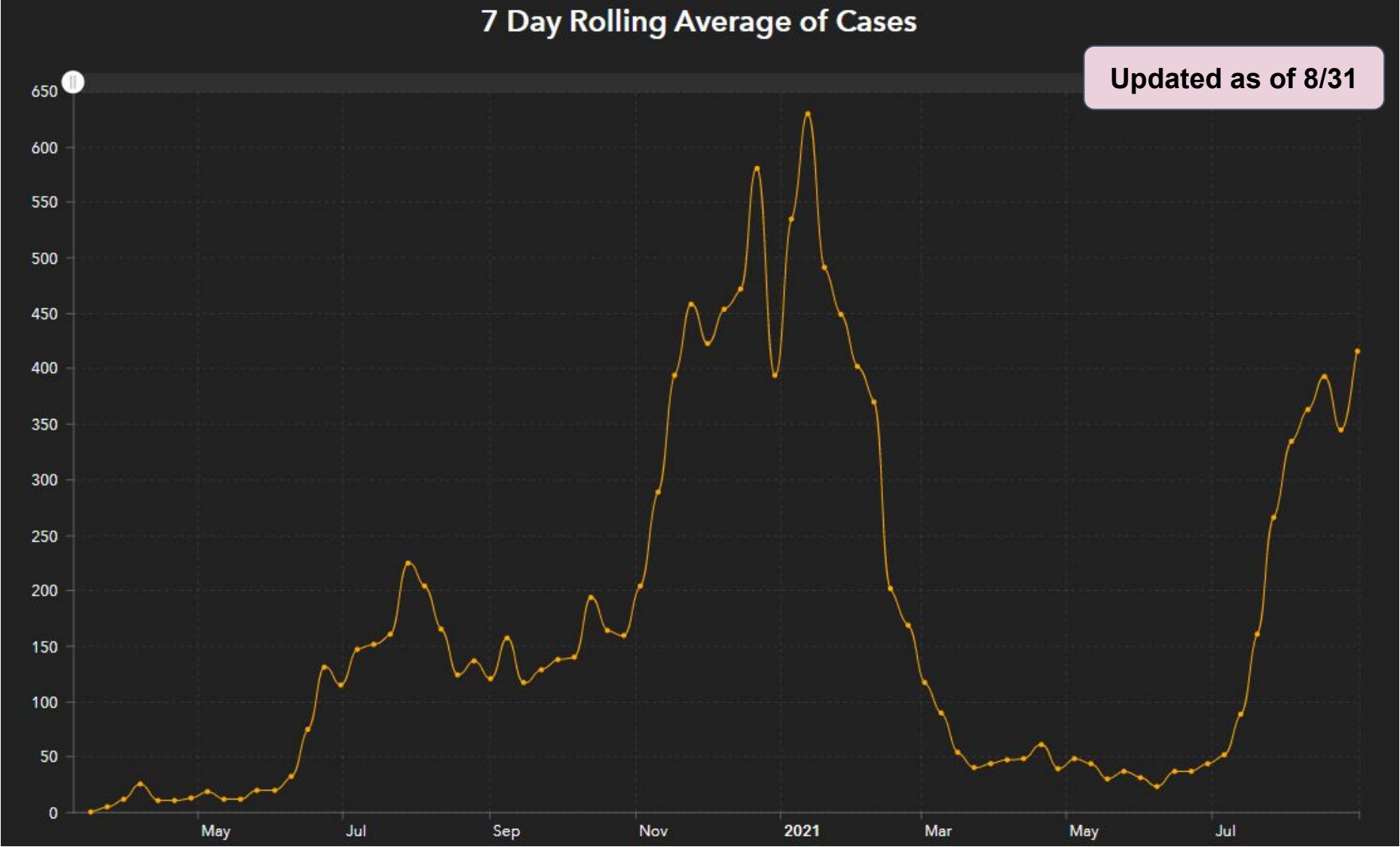
Early Warning Indicators

- Exposures via close contact increased for the second week reflecting the trend in cases for Tulsa County.
- % of positive cases remained relatively flat and at a lower level than surrounding school districts.

Foundational System Metrics

- Safety layers (air quality/filtration, PPE, disinfectant, etc.) are in place at schools, and contact tracing processes are active.

Foundational Health Care Metrics - 7 day rolling average

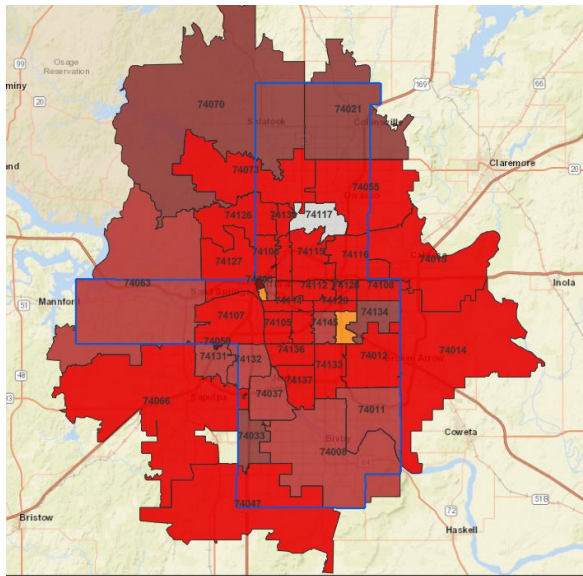


Source: Tulsa Health Department.

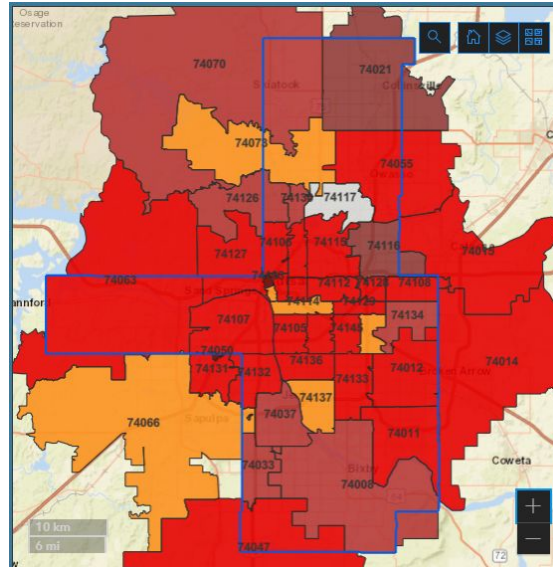
All but eight Tulsa zip codes are red or dark red.

Updated as of 9/1

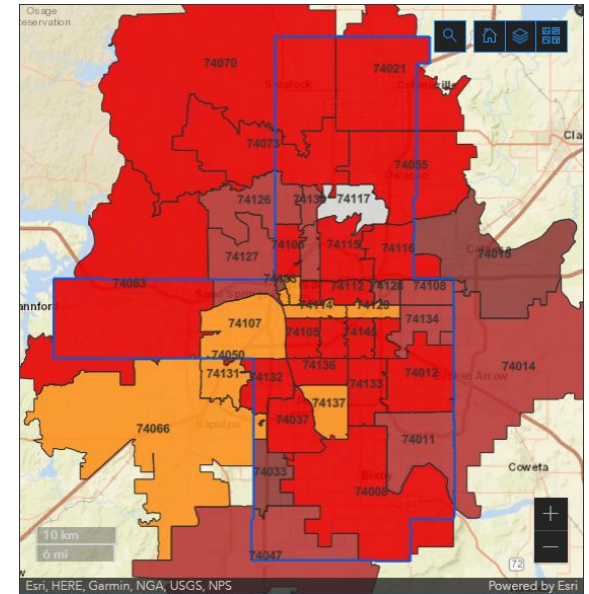
8/18/21



8/25/21



9/1/21

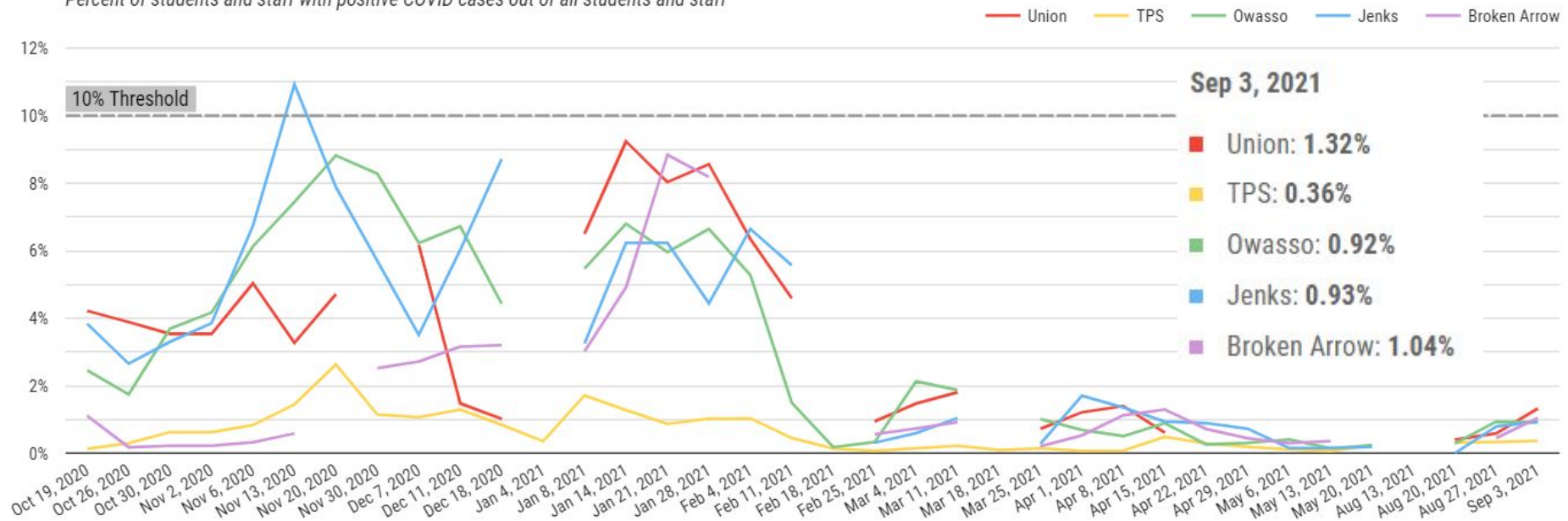


WORKING DRAFT

Local District Comparison - TREND

Updated 9/3
Includes positive
cases only for SY22

Percent of students and staff with positive COVID cases out of all students and staff



As of 8/30, this report only includes positive cases in isolation for school year 2021-22. Reports for dates from May 2021 prior include quarantine counts. Only TPS is publicly reporting quarantined cases; all other districts only reporting positive cases in isolation.

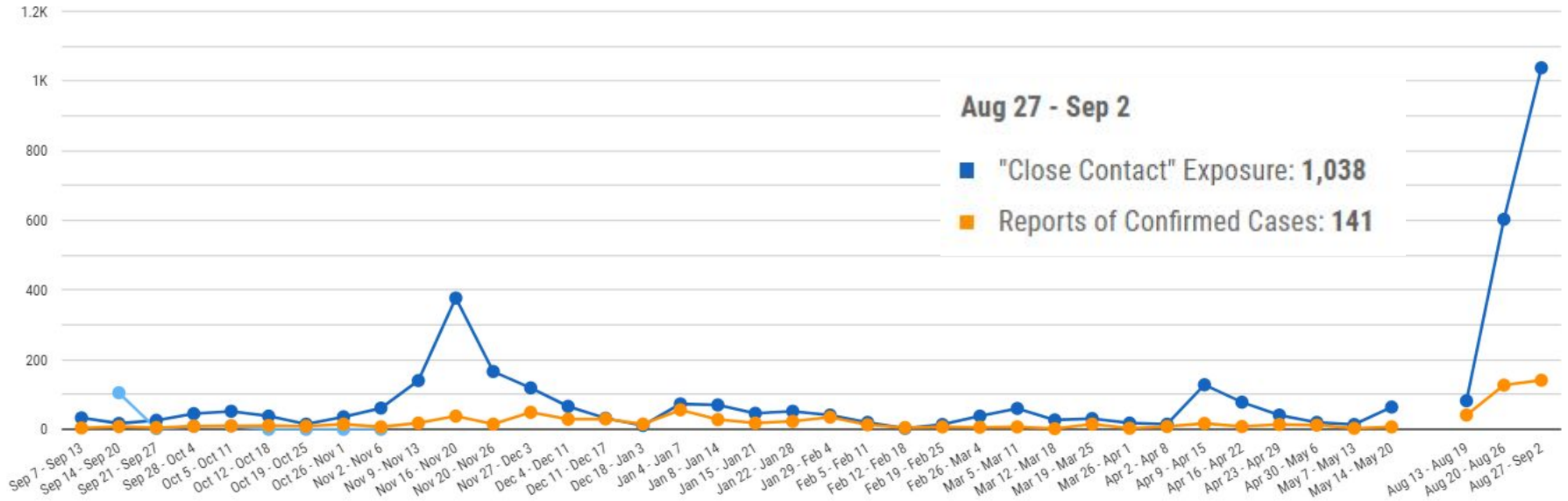
* as of 8/23 Broken Arrow Public Schools has not publish case rate data.
 Report cover cases from the previous Friday through the close of business on Thursday.

WORKING DRAFT

Tulsa Public Schools - TREND

Updated 9/2

Number of **close contact exposures** and **confirmed cases** found by Tulsa Public Schools over time



Report cover cases from the previous Friday through the close of business on Thursday.

WORKING DRAFT



QUESTIONS





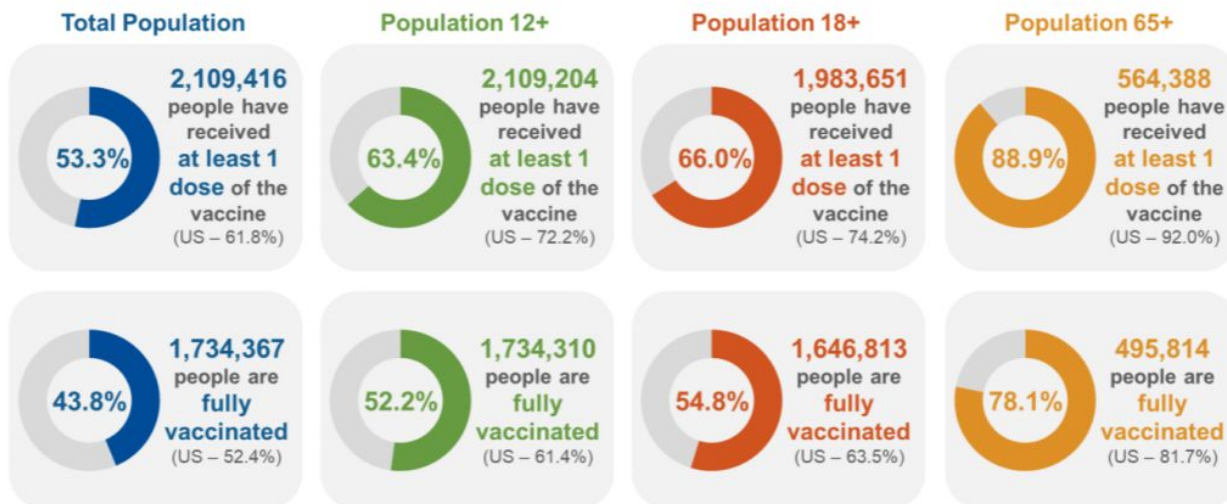
APPENDIX

63.4% of Oklahomans 12+ have received at least one dose

69.3% of Tulsans 12+ have received at least one dose

	Count*	Adult Rate per 100K
Total Doses Administered	3,829,308	120,271

*Includes state and federal administered doses.



Foundational & Contextual Data

Early Warning Indicators at TPS Schools

- These data will help us to monitor conditions that are more localized and specific to our context. These data will help us to be more sensitive to conditions within schools to know if cases are higher or lower than overall county averages. These metrics are:
 - Tulsa Public Schools rapid testing results
 - New case rates for team members and students (TPS contact tracing)

Foundational School System Metrics

- These internal data measure our ability to appropriately respond to early warning indicators and enact the necessary safety precautions at our schools. These metrics are:
 - Availability of necessary PPE
 - Rates of quarantine
 - Staffing capacity

Foundational Health Care Metrics

- These core metrics will help us understand overall rates of community spread. These data will help us to assess overall risk and changes in our greater community that may necessitate a change in our response. The core metrics are:
 - 7-day rolling average of new cases in Tulsa Public Schools boundary
(calculated from public data).
 - 7-day rolling average of new cases in Tulsa County