

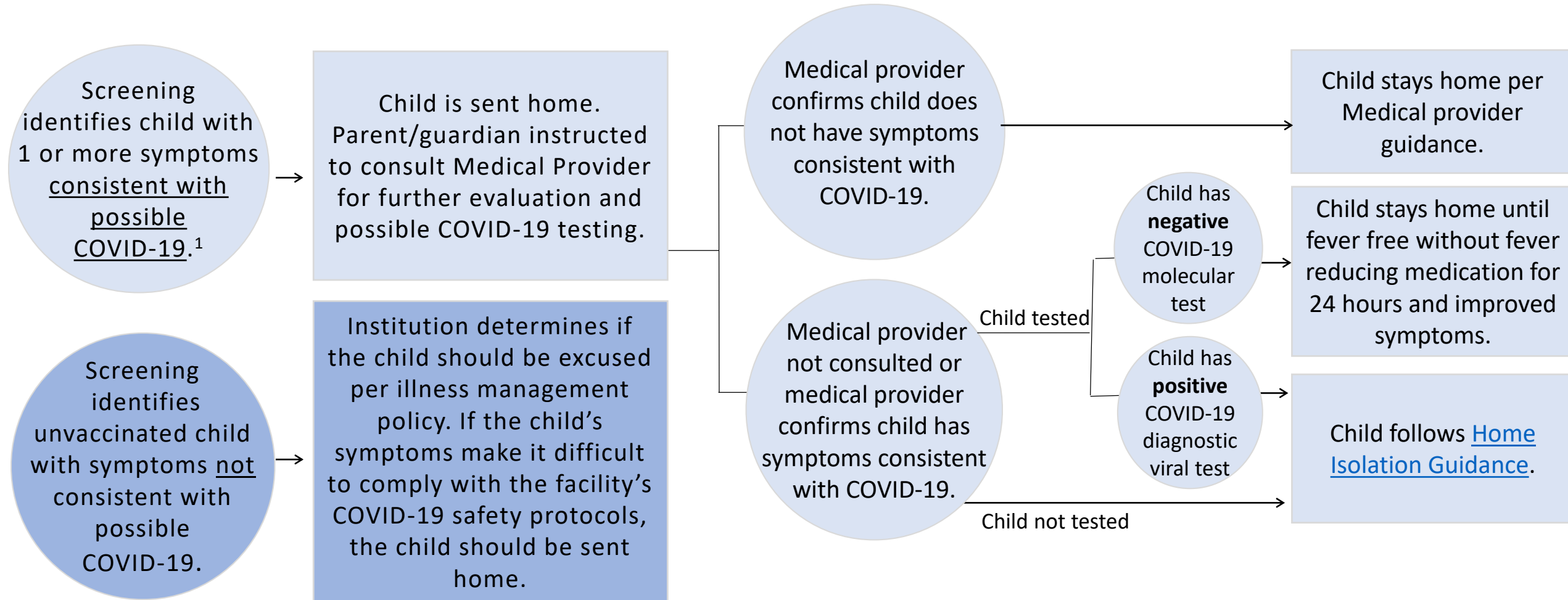
Decision Pathways for Symptoms and Exposures in Early Care and Education Centers and TK-12 Schools

*Los Angeles County Department of Public Health
Updated: 8/31/2021*

Decision Pathways for *Children* with Symptoms

Decision Pathways for Children with Symptoms Prior to Entry¹ into an Educational Institution, regardless of vaccination status

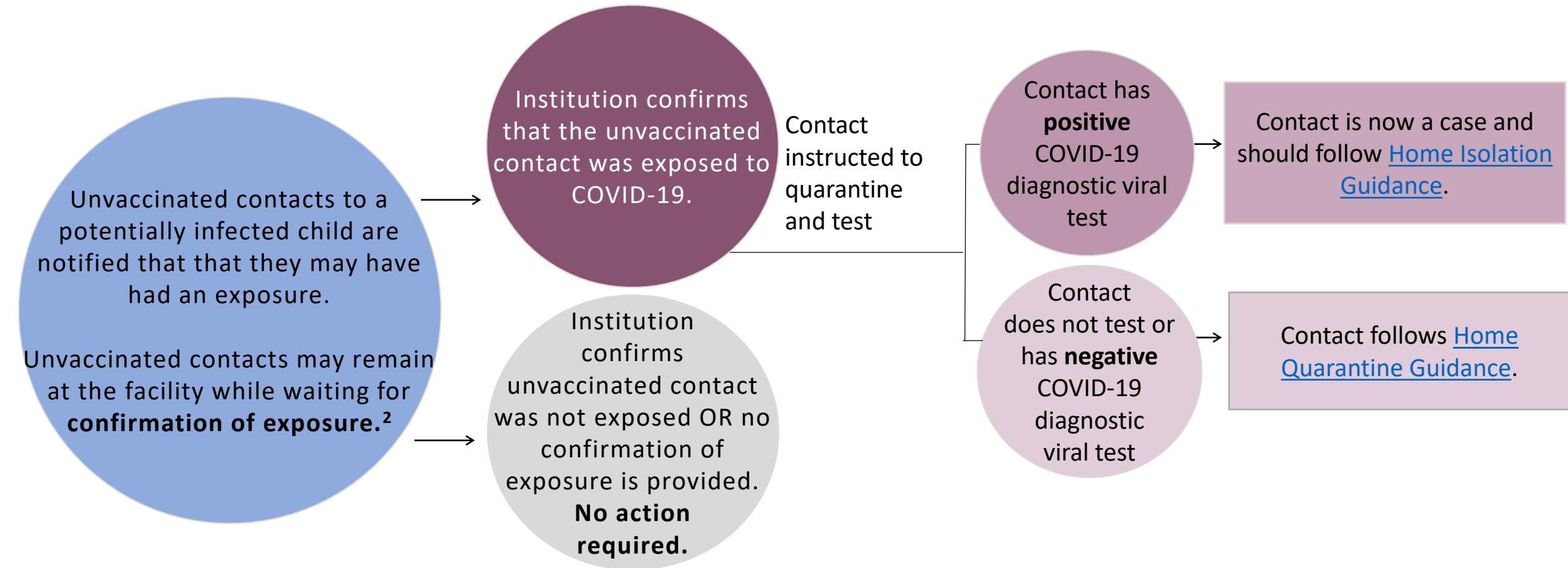
¹If child becomes unwell at the facility, place child in an isolation area (physically distant from attendant, ideally outdoors) and follow decision pathways described below.



¹Symptoms consistent with possible COVID-19 infection in children include: fever $\geq 100.4^{\circ}\text{F}$; new cough (different from baseline); diarrhea or vomiting. If the child's symptoms are not consistent with possible COVID-19 but there is still concern, evaluation of the child by a medical provider is recommended.

Decision Pathways for Unvaccinated Contacts to a Potentially Infected Child¹ at an Educational Institution

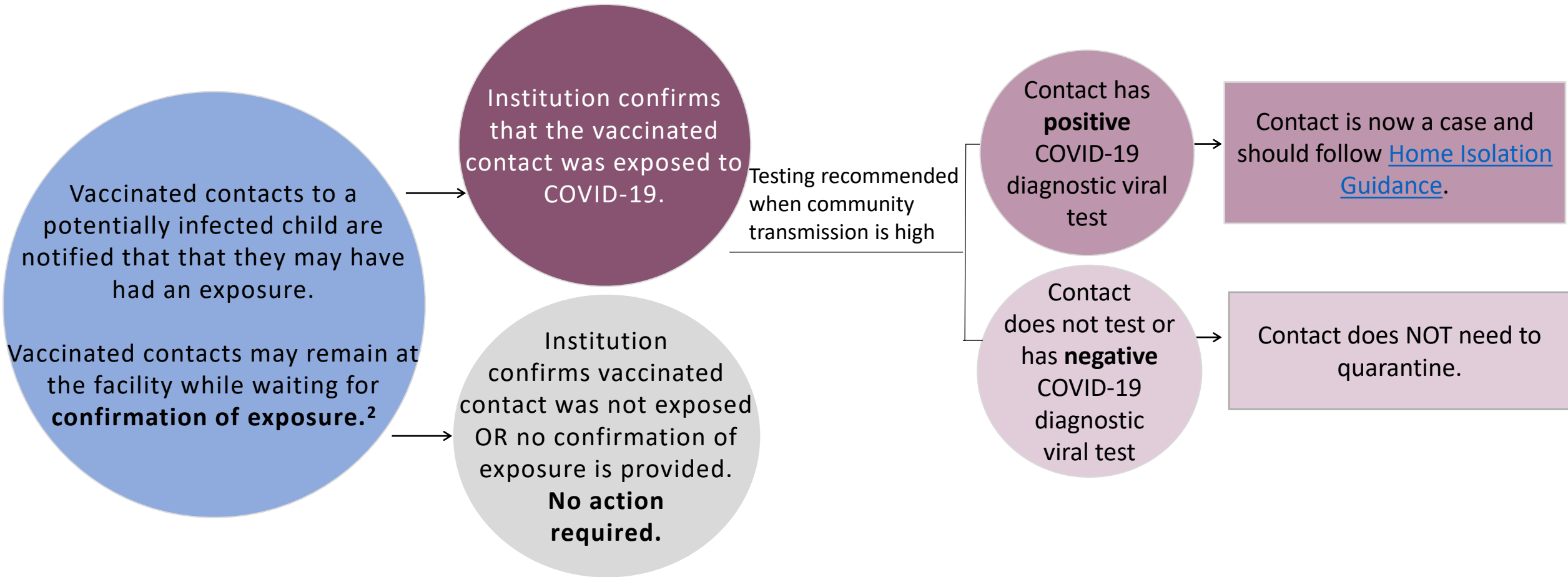
¹A **potentially infected child** is a child with ≥ 1 symptoms consistent with possible COVID-19. Close **contacts of a potentially infected child** are persons at the facility who were within 6 feet for ≥ 15 minutes over a 24-hour period with a potentially infected child OR had direct contact with bodily fluids/secretions from a potentially infected child.



²**Exposure is confirmed** for a close contact to a potentially infected child if the site receives notification that the potentially infected child had a positive COVID-19 diagnostic viral test OR received a COVID-19 diagnosis from a medical provider.

Decision Pathways for Fully Vaccinated Contacts to a Potentially Infected Child¹ at an Educational Institution

¹A **potentially infected child** is a child with ≥ 1 symptoms consistent with possible COVID-19. Close **contacts of a potentially infected child** are persons at the facility who were within 6 feet for ≥ 15 minutes over a 24-hour period with a potentially infected child OR had direct contact with bodily fluids/secretions from a potentially infected child.

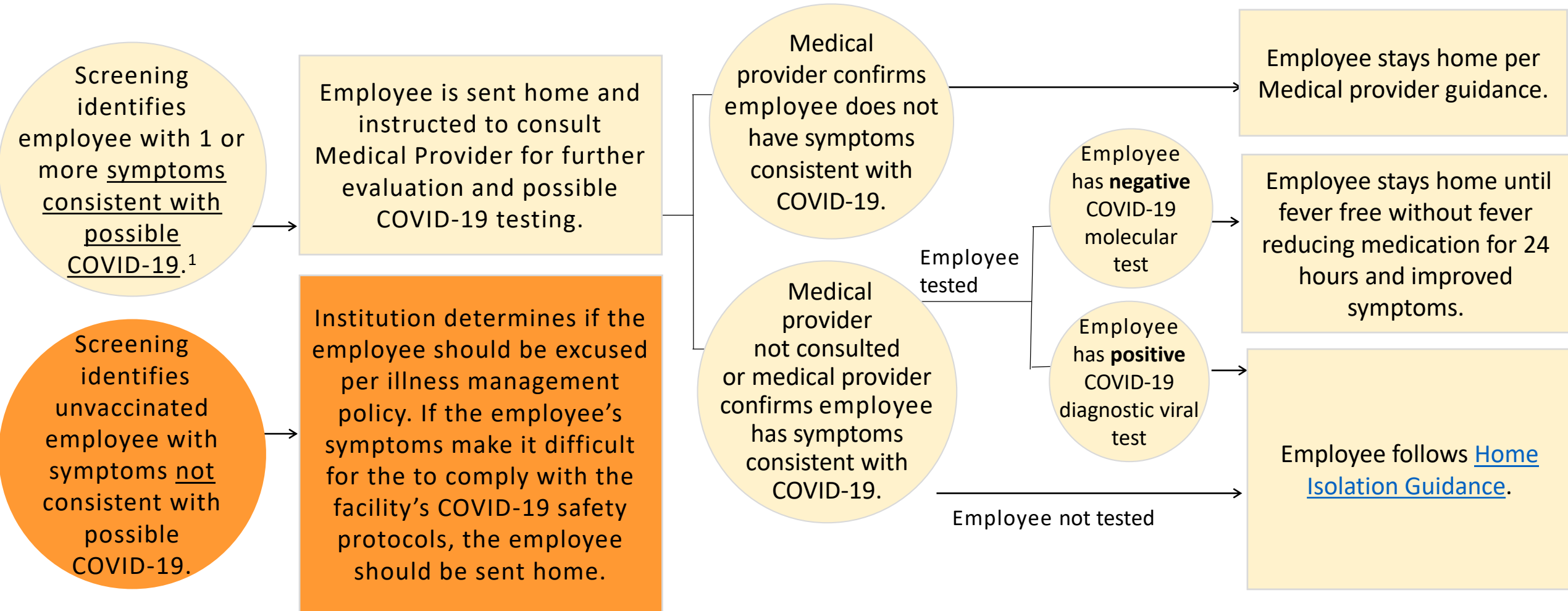


²**Exposure is confirmed** for a close contact to a potentially infected child if the site receives notification that the potentially infected child had a positive COVID-19 diagnostic viral test OR received a COVID-19 diagnosis from a medical provider.

Decision Pathways for *Employees* with Symptoms

Decision Pathways for Unvaccinated Employees with Symptoms Prior to Entry¹ into an Educational Institution, regardless of vaccination status

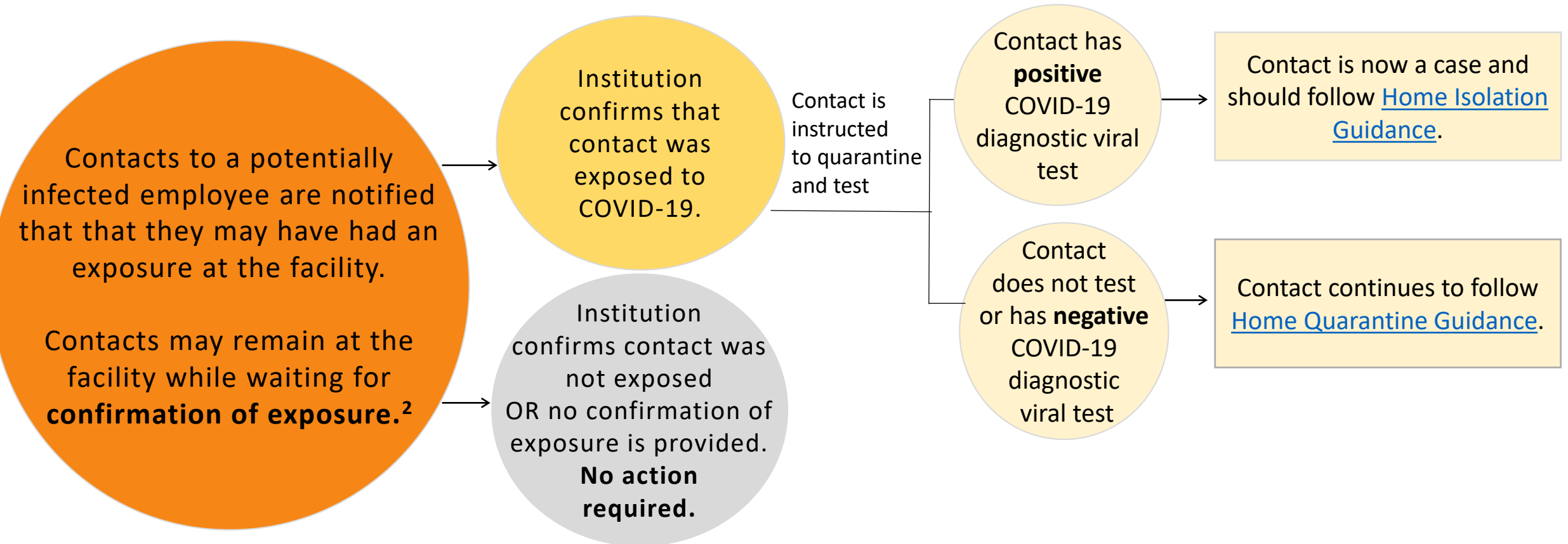
¹If employee becomes unwell at the facility, place employee in an isolation area (ideally outdoors, physically distant from attendant) and follow decision pathways below.



¹Symptoms associated with possible COVID-19 in adults: fever $\geq 100.4^\circ$ or feeling feverish (chills, sweating); cough; shortness of breath; new loss of taste or smell; fatigue; runny or stuffy nose; muscle or body aches; headache; sore throat; nausea or vomiting; diarrhea. If the symptoms are not listed but there is still concern, additional evaluation by a medical provider is recommended.

Decision Pathways for Unvaccinated Contacts to a Potentially Infected Employee¹ at an Educational Institution

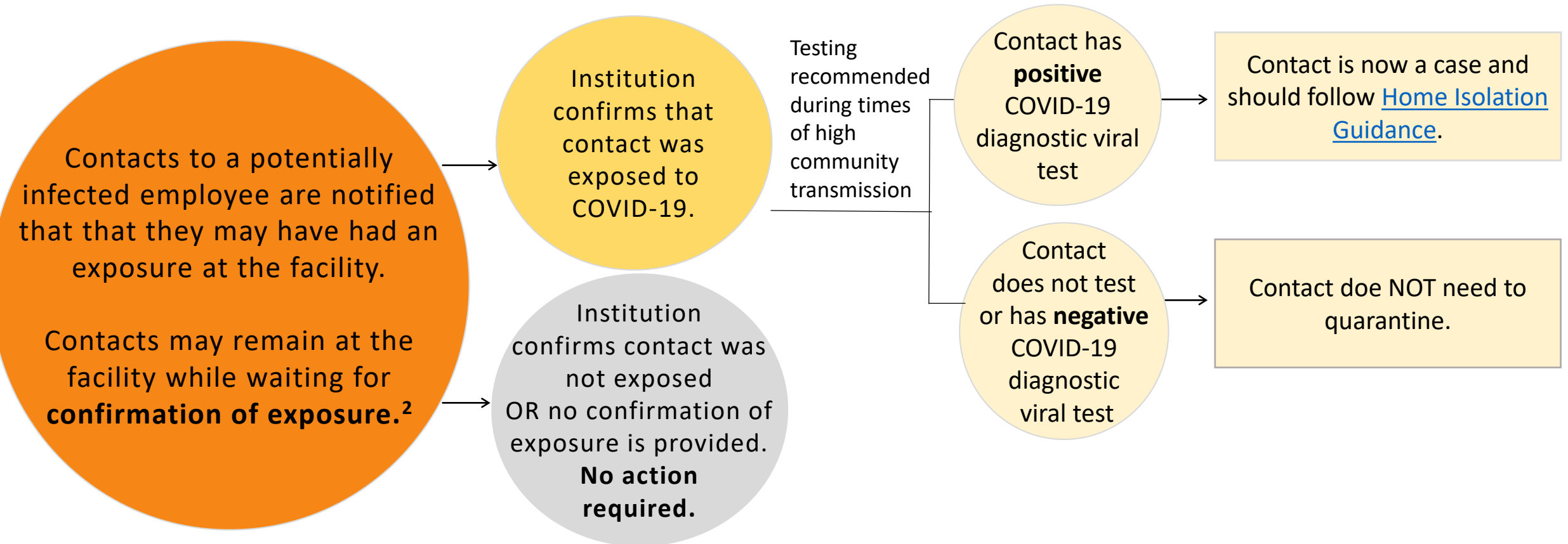
¹A **potentially infected employee** is an employee with ≥ 1 [symptoms consistent with possible COVID-19](#). **Close contacts of a potentially infected employee** are persons at the facility who were within 6 feet for ≥ 15 minutes over a 24-hour period with a potentially infected employee OR had direct contact with bodily fluids/secretions from a potentially infected employee.



²**Exposure is confirmed** for a close contact to a potentially infected employee if the site receives notification that the potentially infected employee had a positive COVID-19 diagnostic viral test OR received a COVID-19 diagnosis from a medical provider.

Decision Pathways for Fully Vaccinated Contacts to a Potentially Infected Employee¹ at an Educational Institution

¹A **potentially infected employee** is an employee with ≥ 1 symptoms consistent with possible COVID-19. **Close contacts of a potentially infected employee** are persons at the facility who were within 6 feet for ≥ 15 minutes over a 24-hour period with a potentially infected employee OR had direct contact with bodily fluids/secretions from a potentially infected employee.



²**Exposure is confirmed** for a close contact to a potentially infected employee if the site receives notification that the potentially infected employee had a positive COVID-19 diagnostic viral test OR received a COVID-19 diagnosis from a medical provider.

Quarantine Pathways for Children and Staff with *Exposures* at Early Care and Education Centers and TK-12 Schools

Identifying Exposures On Campus - Close Contacts to a Confirmed Case

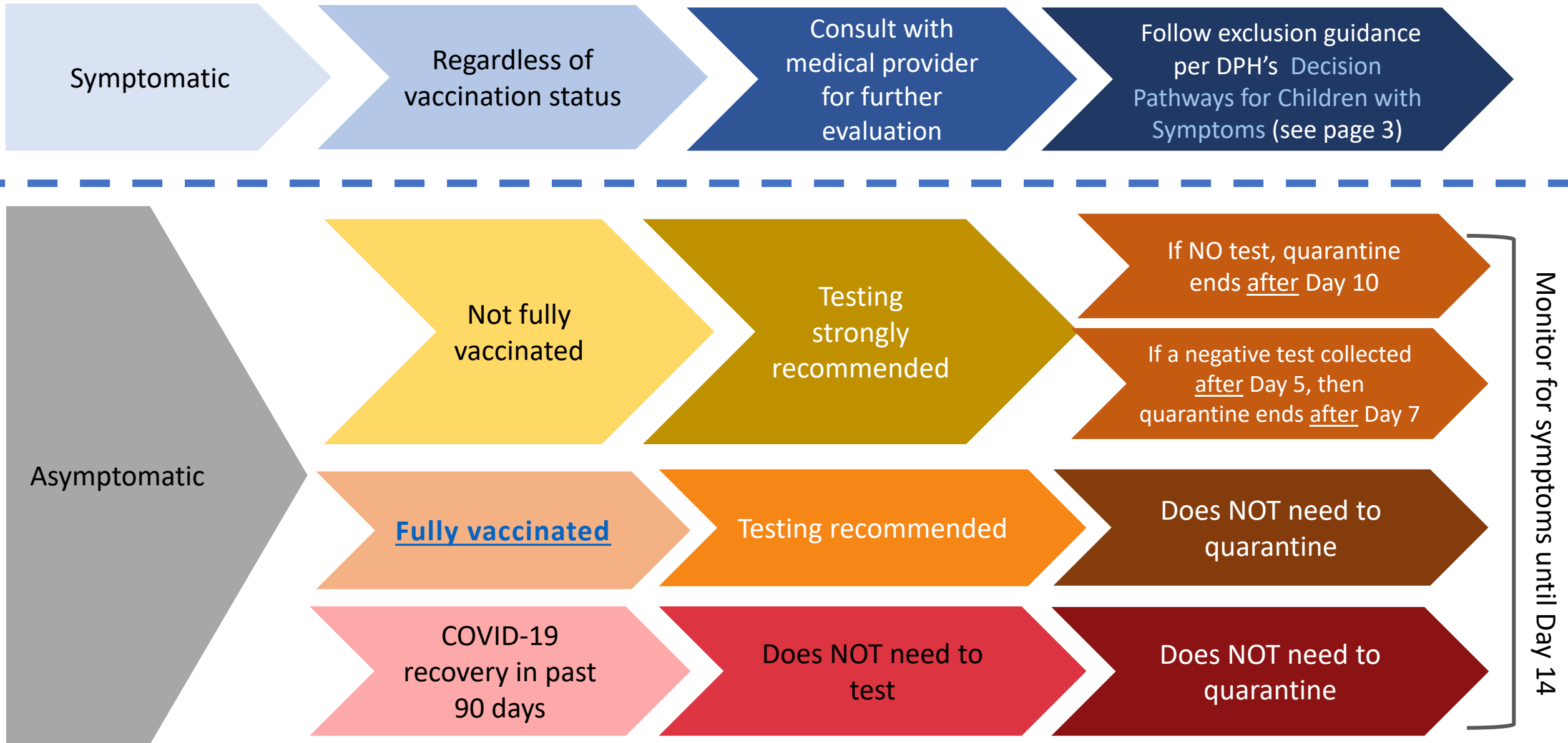
A **close contact** is a person who has been exposed to someone diagnosed with COVID-19 during the infectious period* if at least one of the following has occurred:

- The person was within 6 feet of someone with COVID-19 for a total of 15 minutes or more over a 24-hour period;

OR

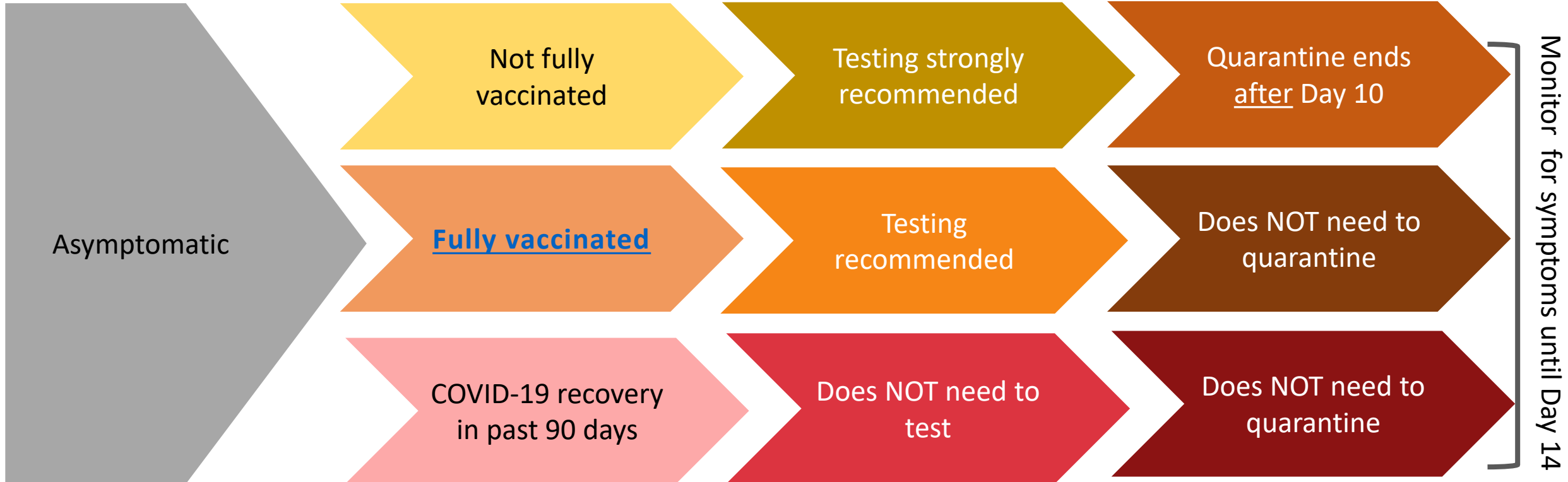
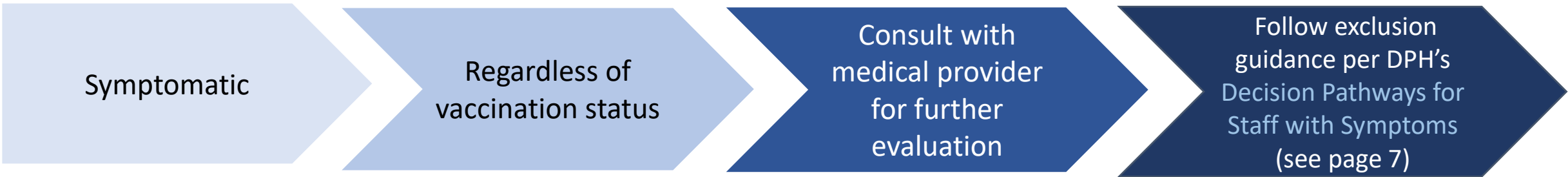
- The person had unprotected contact with body fluids and/or secretions from someone with COVID-19. For example, they were coughed or sneezed on, they shared a drinking cup or eating utensils, they kissed, or they provided care to the infected person without wearing the right protective equipment.
- A person is considered to be **infectious** and able to spread the virus to others from 2 days before symptoms first started until the isolation period ends (i.e. 10 days have passed since symptoms first started AND no fever for at least 24 hours AND symptoms improve); OR, if symptoms never develop, from 2 days before their positive test was taken until 10 days after that test was taken.

For Exposed Children*: *How long for quarantine?*



*Follows Los Angeles County Department of Public Health [Home Quarantine Guidance](#)

For Exposed Employees*: *How long for quarantine?*



*Follows workplace guidance for employees outlined in the Cal/OSHA COVID-19 Prevention [Emergency Temporary Standards](#)