



Santa Teresa Elementary School 2021-22 Opening Details

August 2021



Dear Santa Teresa Community,

Since March 13, 2020, our students, staff, and community have endured an immense and unprecedented challenge due to the shutdown of our campus caused by the COVID-19 pandemic. While about 50% of our students participated in the hybrid model starting in April 2021, none of our students have been able to experience the traditional school model. The resiliency of our students and staff during this time has been astounding. Despite their physical absence from our campus, students have engaged in learning, created meaningful connections with their teachers, and collaborated with each other to develop impressive examples of their knowledge. While we appreciate the sacrifice of students, staff, and parents, and are proud of the accomplishments of all during distance learning, we look forward to safely reopening our beautiful and fresh campus to all students on August 11th.

Reopening the Santa Teresa Elementary campus safely and successfully for the 21-22 school year requires the cooperation and patience of all of us. Students must be confident that parents and staff will work together to make the in-person school experience the best it can be. A close look at the guidelines outlined in this presentation is greatly appreciated. Although school won't look exactly like it did before March 2020, our students need the vital social and school community connections that can't be replicated without students on campus. Thank you for your continued dedication to the safety and education of your child. Welcome to all of our new families. We look forward to getting the Panther Family back home!

Thank you, Mark Lepori

Santa Teresa Elementary Principal

Ask yourself these questions before physically reporting to Santa Teresa:

1. Within the last 10 days have you been diagnosed with COVID-19 or had a test confirming you have the virus?

If Yes – STAY HOME and continue medical care from your health provider.

2. Within the past 14 days, have you had close contact with someone who has been in isolation for COVID-19 or had a test confirming they have the virus? Close contact is less than 6 feet for 15 minutes or more.

If Yes – STAY HOME and seek medical care and testing.

3. Have you had any one or more of these symptoms today or within the past 3 days?
Fever or chills • Cough • Loss of taste or smell • Shortness of breath or difficulty breathing

If Yes – STAY HOME and seek medical care and testing.

4. Have you had any one or more of these symptoms today or within the past 3 days and that are new or not explained by another reason?

Fatigue • Muscle or body aches • Headache • Sore throat • Nausea, vomiting, or diarrhea

If Yes – STAY HOME and seek medical care and testing

Health Guidelines

Staff assess themselves, parents assess students...Everyday!





Health Guidelines

Student and Staff Safety Measures

- All students and staff will wear masks on campus indoors (unless exempt with a doctor's note, in which case an alternative face covering will be required)
- Wearing masks outdoors is currently optional, but is strongly encouraged.
- Masks will be available for students not bringing one and will be required before entering the building.
- Hand sanitizer will be stocked and regularly used in all locations housing individuals.
- Students and staff will practice regular hand washing in class and after restroom use.



What will happen if a student gets sick during school?

- Classroom staff will call office.
- Office staff, using exterior doors, will go to the classroom and walk the student back to the office for assessment.
- Student with COVID symptoms will be isolated and monitored (conference room or outside in our quad near the cafeteria).
- Parent will be called for immediate pick up.
- County Guidelines will be followed.



Health Guidelines

Community Safety Measures

- Any visitors coming to the Santa Teresa office for essential support **MUST** wear a mask.
- Parents/guardians coming on campus during drop-off and pick-up times must also wear a mask.
- Parents/guardians must immediately clear the campus after drop-off and/or pick-up (no staying to play on the playground or socialize with other parents)



Santa Teresa Bell Schedule

TK-K 8:30 AM - 1:45 PM

1st-6th 8:30 AM - 2:45 PM

*Adjusted Days - 8:30 AM - 1:45 PM for all students

A more detailed ST bell schedule can be found [here.](#)

Students can arrive up to 15 minutes before the start of their day, but no earlier.



Most Important Drop-off and Pick-up Tip

*After understanding the options, have a plan and stick to it. Consistency is key!



Santa Teresa Elementary Classroom Map 2021-22

| | | | | | |
|----------------------|-------------|-------------------|-------------------|-------------------|-------------------|
| P-12 Mrs. Baliton | P-10 VPA | P-8 Ms. Geibig | P-6 Mrs. Rizzi | P-4 Ms. Aranda | P-2 Ms. Ammick |
|----------------------|-------------|-------------------|-------------------|-------------------|-------------------|

| | | | | | |
|-------------------|-------------------|-----------------------|--------------------------------|--------------------|---------------------|
| P-11 Mr. Boles | P-9 Mrs. Ramos | P-7 Ms. Garabetian | P-5 Mr. Torres SDC upper | P-3 Ms. Rinauro | P-1 Ms. Williams |
|-------------------|-------------------|-----------------------|--------------------------------|--------------------|---------------------|

| Restrooms | |
|-------------------------------|--------------------------------|
| A-4 Mrs. Guerra | A-3 Mrs. Anderson |
| A-5 Vision/ ABA therapy | A-2 O.T/ A.P.E. |
| A-6 Mrs. Chaffin | A-1 Ms. Wood SDC primary |

Catalyst
Kids
Day
Care

| | | | |
|---------------|---------------|---------------|---------------|
| P-A County | P-B County | P-C County | P-D County |
|---------------|---------------|---------------|---------------|

Gas/Elec Main

| | | | |
|----------------|------------------------|--------------------------------|------------------|
| E-7 Kitchen | E-6 Staff Lounge | E-5 Mr. Moody SDC kinder | E-4 BASE |
| Cafeteria | | | E-3 Ms. Paige |
| Storage | Custodial Room - 1 | E-2 Ms. Kong | |
| E-1 | Staff Rest- room | | |

| | | |
|--------------------------------------|---------------------|-------------------|
| B-3 Mrs. Charles/ Mrs. Cassara | B-2 Book Room | B-1 Ms. Miller |
| B-4 Mrs. Nardi | B-5 | B-6 Mrs. Rice |

| | |
|--------|---------|
| Speech | Library |
| Psych | SDP |

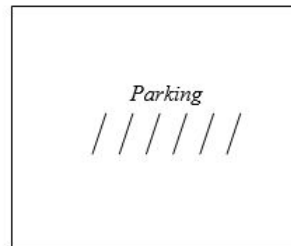
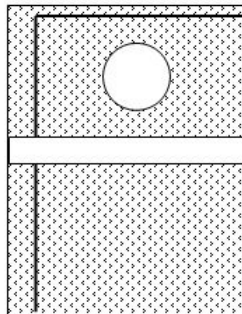
| | | | |
|-----------------|--------------|---------------------|-----------------------|
| Health Clerk | Copy Room | Principal Office | Conference Room |
| Office | restrooms | W/M | Custodial Room - 2 |

Santa Teresa Elementary School

6200 Encinal Drive
San Jose, CA 95119
Ph. 227-3303 / Fax 226-3379

Principal: Mark Lepori
Secretary: Cheryl Snyder
Custodian: Dulio Rivas

| C-1 Mrs. Fujishin | C-6 Mrs. Sandoval (Mendoza) |
|----------------------|-----------------------------------|
| C-2 | C-5 ELTP Ms. Amaral |
| C-3 Mrs. Joseph | C-4 Ms. Race |
| Restrooms | |

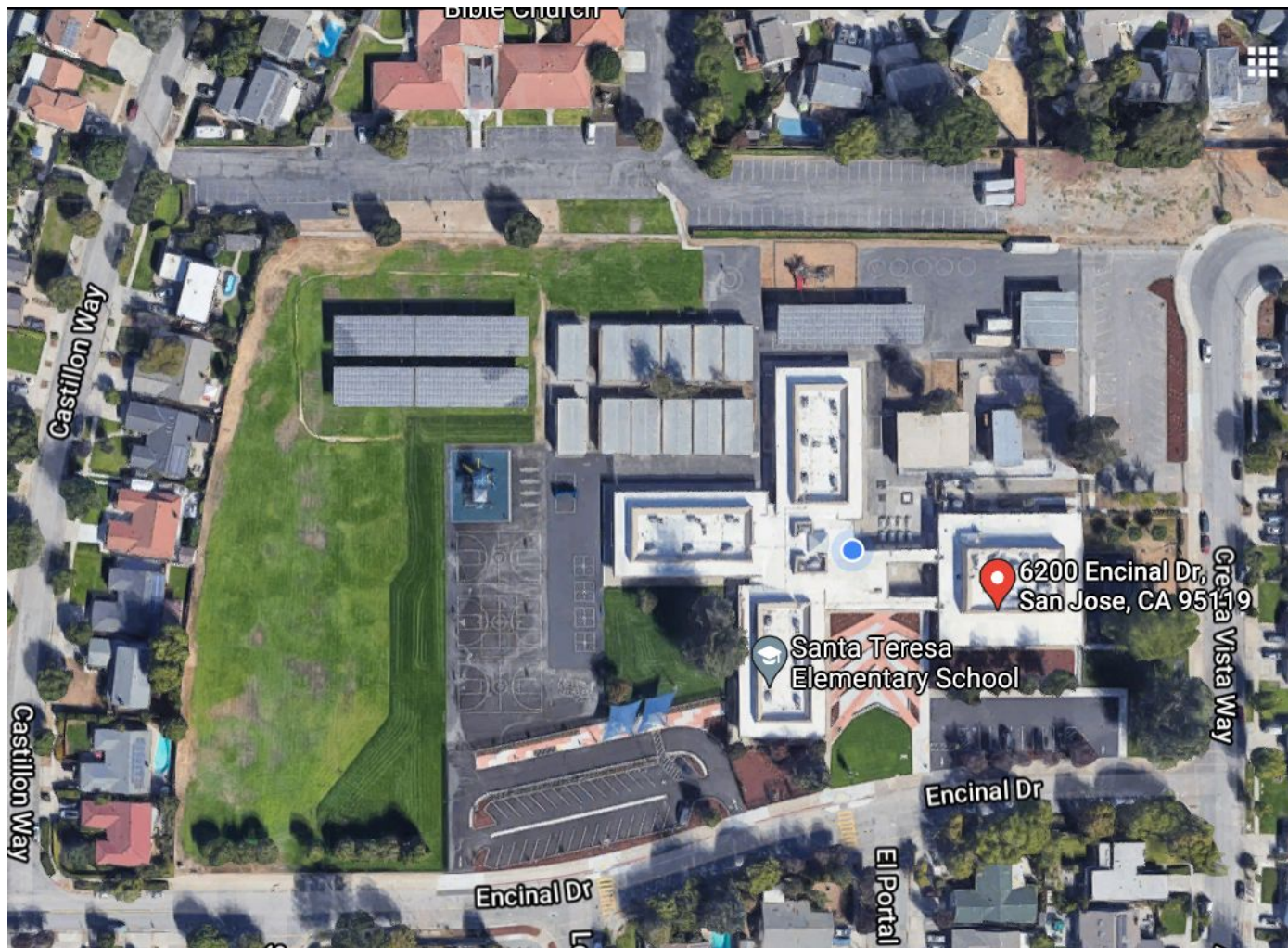


Water Main

Encinal Drive



Aerial View of Santa Teresa Elementary



Students Walking to School (or parking and walking in)

- Having your child walk or walking with them is the BEST option to get to school.
- The Blossom Valley Bible Church (BVBC) is a good park and walk in option.
- Parents/guardians will be able to walk in to the campus with their child (wearing masks). This is particularly important for TK-2nd graders.

Cresta Vista Way

BVBC Parking Lot

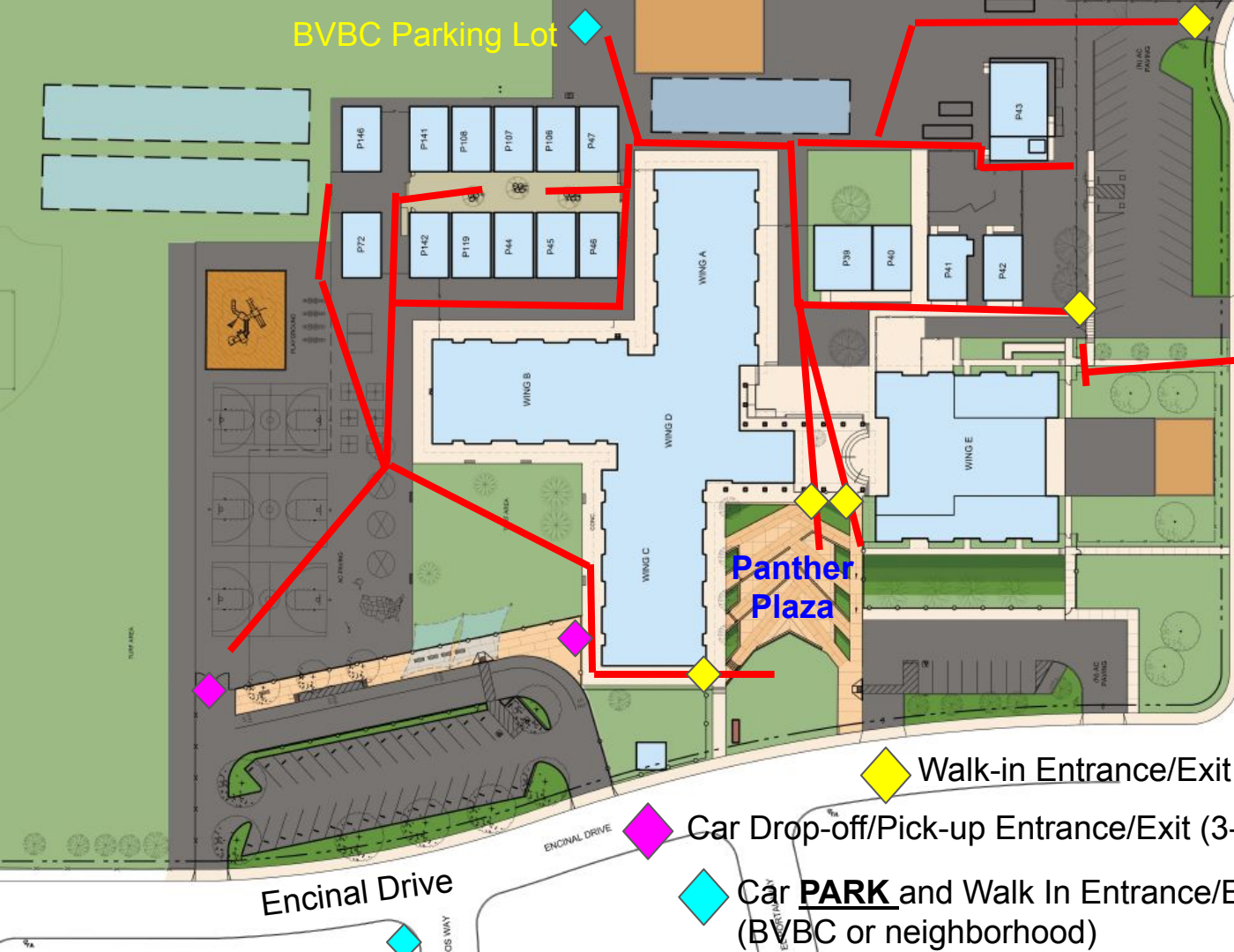
Panther Plaza

Walk-in Entrance/Exit

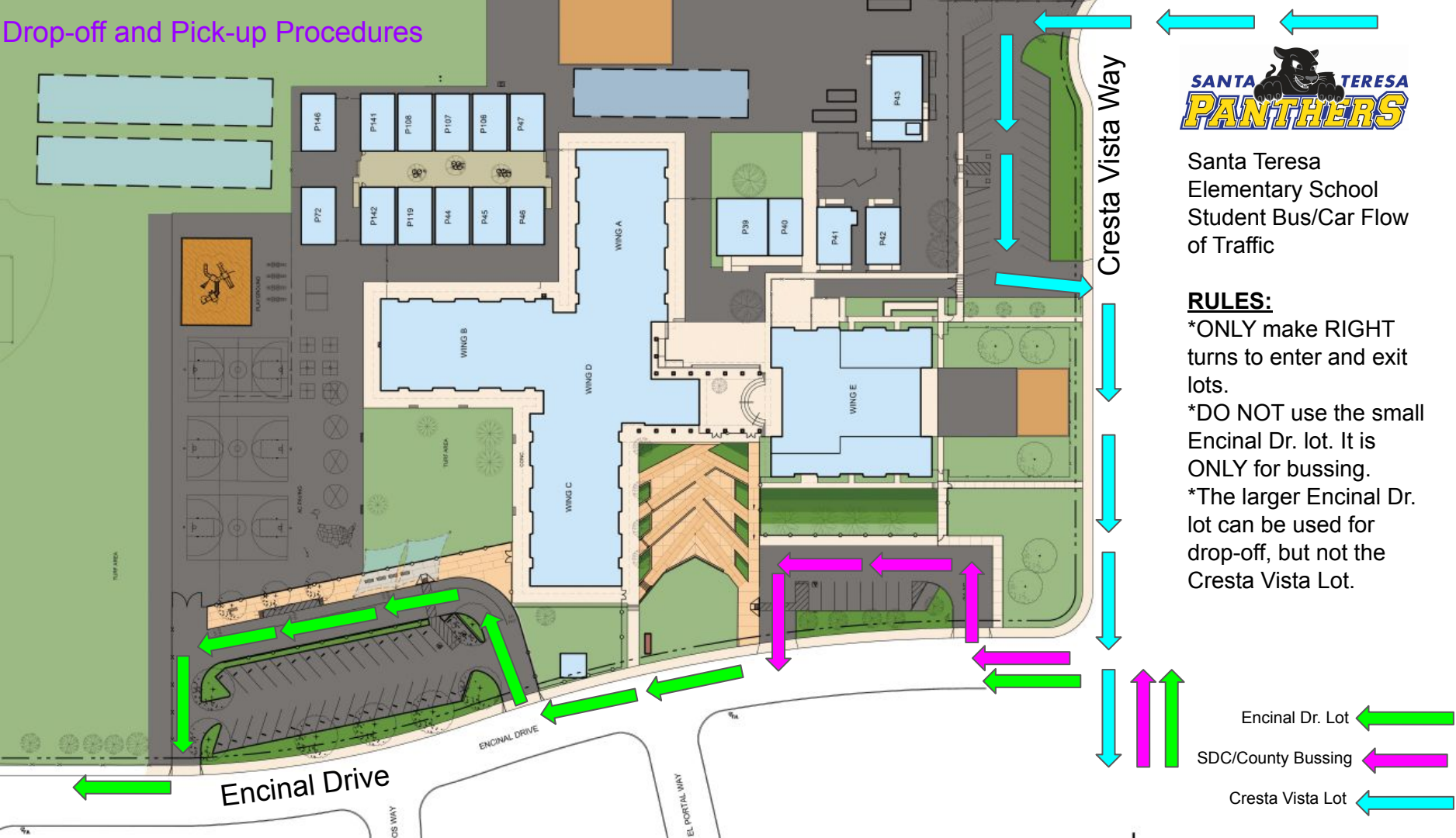
Car Drop-off/Pick-up Entrance/Exit (3-6)

Car **PARK** and Walk In Entrance/Exit (BVBC or neighborhood)

Encinal Drive

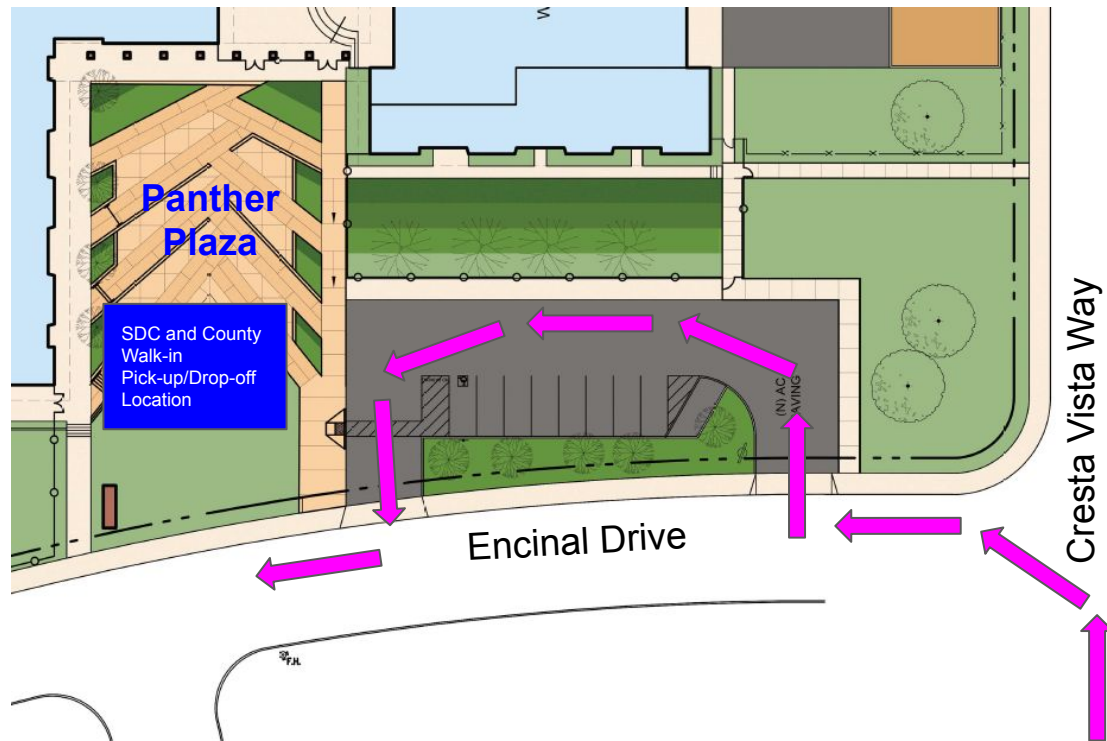


Drop-off and Pick-up Procedures



SDC/County Drop-off and Pick-up Location and Protocol

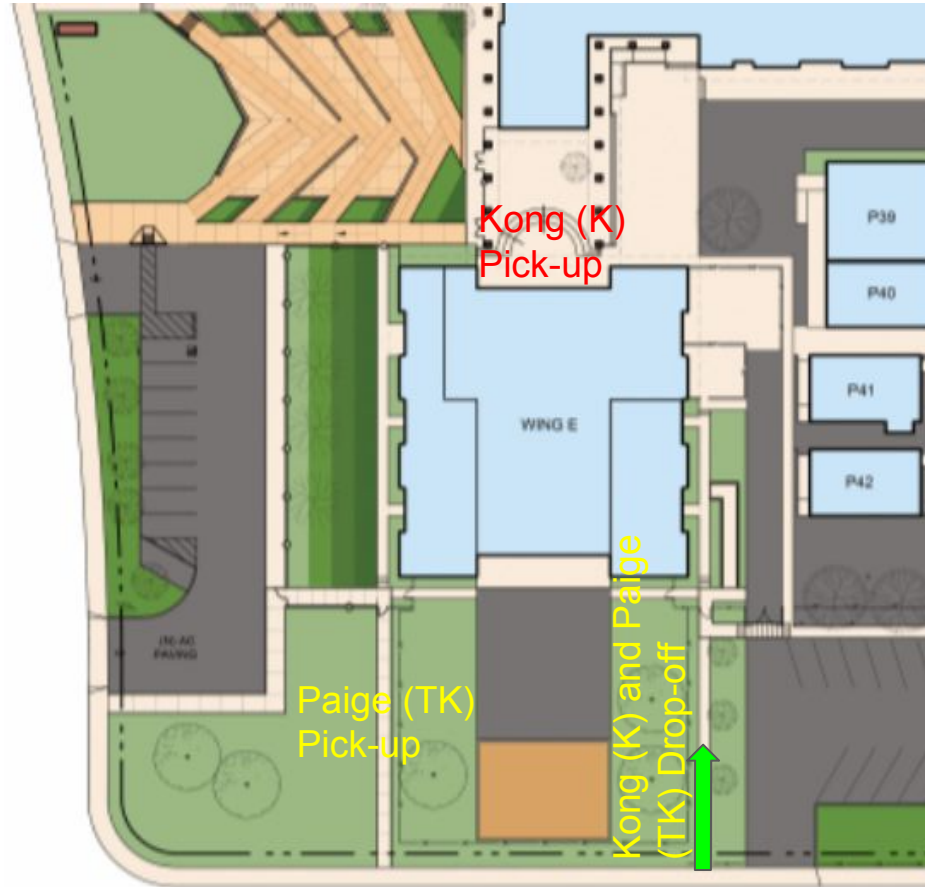
- The Encinal Drive Panther Plaza Parking Lot will **ONLY** be used for special education **bussing**.
- All County and SDC Santa Teresa students will be dropped off and picked up at the Encinal Drive Panther Plaza Parking Lot.
- A ramp at the North end of the parking lot is available for students and staff.
- Parents/caregivers **parking and walking in** will drop off and pick up their **SDC or County** student on the lawn at the Panther Plaza. There is no parent parking in the Panther Plaza Lot (for bussing **ONLY** - pink arrows).



This small Encinal Dr. parking lot is for school busses only!

TK/K Drop-off and Pick-up Locations/Information - Paige (TK) and Kong (K)

- With TK/K being our youngest students, it is important that parents/guardians are able to make visual contact with teachers to safely hand off students.
- TK/K parents/guardians should walk in to their drop-off and pick up locations.
- Kong and Paige will gather students in the TK/K playground area.
- Drop-off from 8:15-8:30 am.
- Pick-up at 1:45 pm.



Cresta Vista

Kong (K) and Paige (TK) Drop-off and Pick-up Photos

Kong and Paige Drop-off
Gate (near Cresta Vista
Lot)



Kong Pick-up Location
(outside of cafeteria)



Paige (TK) Pick-up Location
(corner of Cresta Vista and
Encinal)



K Drop-off and Pick-up Locations/Information - Guerra (K) and Anderson (K)

- With K being our youngest students, it is important that parents/guardians are able to make visual contact with teachers to safely hand off students.
- K parents/guardians should walk in to their drop-off and pick up locations.
- Drop-off from 8:15-8:30 am.
- Pick-up at 1:45 pm.



Guerra (K) and Anderson (K) Drop-off and Pick-up Photos

Anderson and Guerra
Drop-off Lines (behind
the school near BVBC
lot)



Guerra Pick-up Location
(outside of gates near
her classroom - A4)



Anderson Pick-up Location
(across from her classroom
door - A3)



Santa Teresa 1st and 2nd Grade Drop-off and Pick-up

- In light of their age and the fact that many of them have spent very little time on campus, 1st and 2nd grade students should have the support of a parent/guardian to get them to line in the morning and to pick them up after school.
- For drop-off, 1st and 2nd grade will line up behind the school behind their classroom sign (see line up locations [here.](#)). Students will be supervised, so parents/guardians can leave after drop-off in line.
- For pick-up, parents/guardians should be waiting near their 1st/2nd graders classroom (see map on next slide). Individuals picking up near classrooms are not allowed at the door or inside the classroom under any circumstance. Teachers will help get students to their parents/guardians waiting nearby.



1st and 2nd Grade Pick-up

- 1st and 2nd grade classrooms are identified by room number in orange print.
- The 1st and 2nd grade parent/guardian waiting areas are identified by room number in yellow print.
- Parents/guardians waiting for B3, B1, and A6 students should stay close to the back of the portables to allow for a clear path of traffic as students pass by.
- Parents/guardians waiting for B4, B6, and C1 students should stay on the grass to allow for students to pass clearly on the cement pathway.





Santa Teresa 3rd-6th Grade Drop-off

- 3rd-6th grade students are encouraged to walk to school with an adult or on their own (depending on the comfort level of parents/guardians).
- 3rd-6th grade students will line up in the morning on the main blacktop (see the 3rd-6th grade line up map [here.](#)).
- 3rd-6th graders can be dropped off curbside in the Encinal Drive large parking lot and walk to their lines through one of two gates (see map on upcoming slide). Drivers **MUST** enter the parking lot by making a right turn from Encinal Dr. and **MUST** exit the parking lot making a right turn to exit the parking lot.
- Parents/guardians can park in the BVBC lot or neighborhood to walk in with their child, but independence is encouraged at this age level and minimizing adults on campus in the morning is preferred.

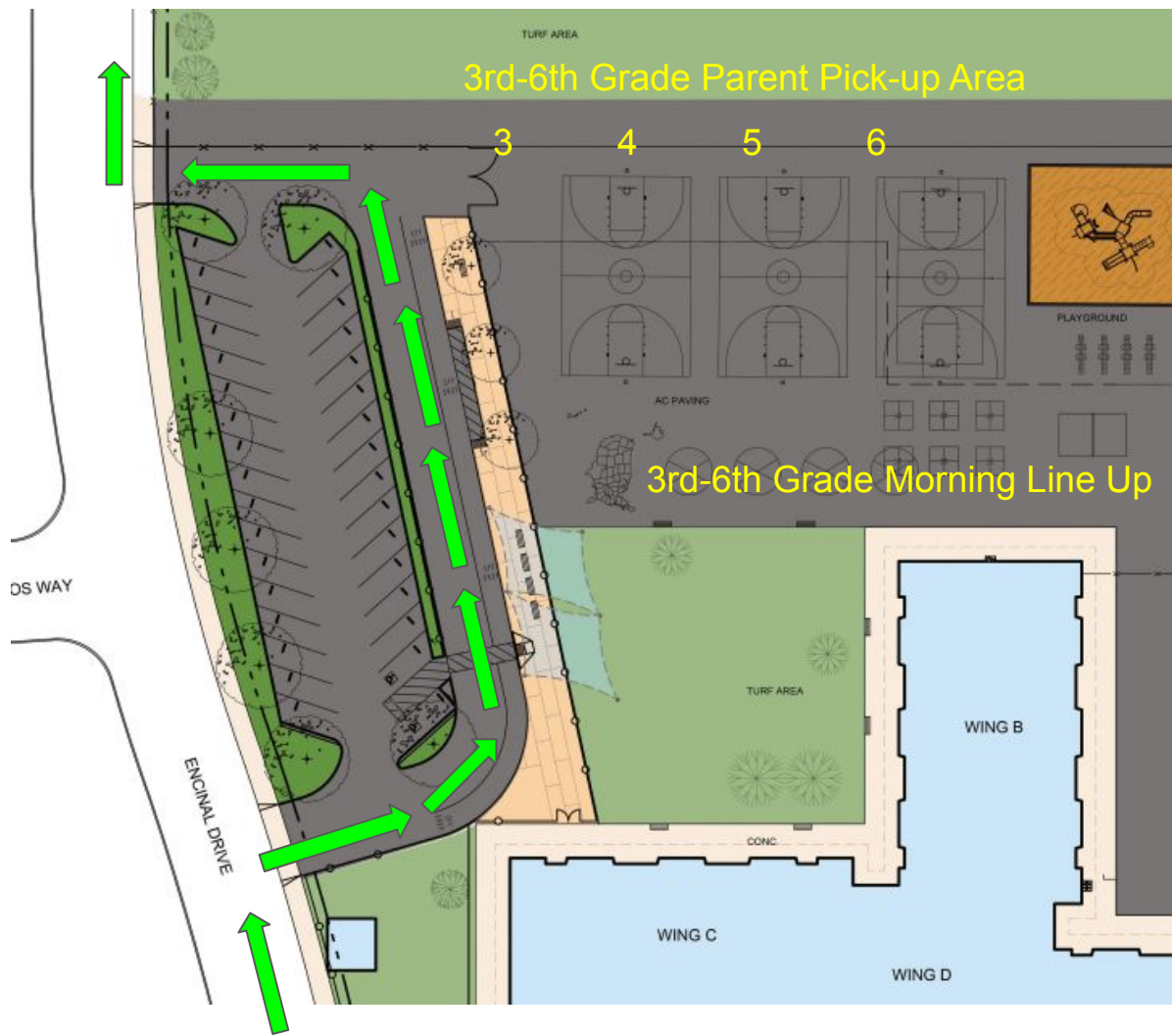


Santa Teresa 3rd-6th Grade Pick-up

- 3rd-6th grade students are encouraged to walk home and/or meet a parent/guardian at a location down a neighborhood street determined by the family.
- Parents/guardians can wait (see map on next slide) in the designated grade level area on our main blacktop/field for 3rd-6th graders (absolutely no parents/guardians are to wait for students on the upper grade deck).
- Parents/guardians can drive through the Encinal Dr. parking lot to pick up their child (see map). **This is not a preferred option**, as there will be an extensive wait on Encinal Dr. This option should only be selected if there are circumstances that would not allow a parent/guardian to wait in the designated grade level waiting area or have their child walk home or meet them outside of school grounds.

3rd-6th Drop-off and Pick-up Map

- Reminder: The Encinal Dr. parking lot is a good option for 3rd-6th drop-off, but is not preferred for pick-up.
- If you enter the Encinal Dr. parking lot, you **MUST** make a right from Encinal Dr. to enter and **MUST** make a right, continuing down Encinal, to exit.





Santa Teresa Elementary School Drop-off and Pick-up Reminders

- All drivers must follow the routes and directions outlined by the school.
- No U-turns on Encinal Drive or Cresta Vista Way.
- All students will enter and exit their cars from the right side.
- All adults on campus at pick-up and drop-off **MUST** wear a mask.
- Drop-off is from 8:15-8:30 am. Do not drop-off before 8:15 am.
- Gates will be open at 8:15 am and closed at 8:35 am.
- Parents/guardians must leave as lines walk in or before.
- Gates will be opened at 1:35 pm on early dismissal days and 2:35 pm on regular release days for parents/guardians.
- Parents/guardians and students must leave campus at dismissal (No playing on the playground or socializing in campus in parent groups)

Your cooperation with ALL guidelines is greatly appreciated and will allow for us to maintain a somewhat normal experience at drop-off and pick-up. Failure to comply with guidelines will require new protocols. Thanks for your partnership!



Using the Office for Essential Support

- Office hours 8:00 - 3:30 M-F.
- ONE person at a time will be assisted in the office.
- Enter and exit will be through the main office door.
- Maintain social distance while waiting outside (red lines).
- NO adults (other than staff) will be allowed anywhere on campus other than the front office (aside from drop-off and pick-up protocols).



Signing Students Out Prior to Dismissal

- Parent/guardian follows usual “sign out” protocol through the office.
- Office staff, using exterior doors, goes to classroom to pick up student.
- Parent waits outside office for staff and student to return from classroom.
- Aside from an emergency, signing out students less than 30 minutes before dismissal is highly discouraged.



Students Who Are Late to School

- Student comes to the office for tardy slip
- Office staff, using exterior doors and pathways, walks student to classroom
- Staff returns to the office using exterior pathways.
- All parents will ensure students arrive to school on time, during allotted time outlined in the drop-off and pick-up guidelines.



Student Restroom Usage

- All restrooms on campus (other than the office and health office restrooms) will be open and available for student use.
- Students must wear masks in all restrooms.
- The following classes will use their interior classroom restroom during class time: Paige, Moody, Kong, Verma, Anderson, Guerra.
- Students will be reminded to wash hands thoroughly when using restrooms.



Student Restroom Use Guidelines

- ONE student at a time in restroom
- Students waiting outside will practice social distancing (using red lines on the ground)
- Students will walk outside the buildings to access restrooms (except for classes with restrooms inside their room).
- If a buddy is sent with a student needing to use the restroom (TK-2), that buddy will wait outside the restroom.
- Students will walk outside the buildings to access restrooms (except for classes with restrooms inside their room).
- If a buddy is sent with a student needing to use the restroom (TK-2), that buddy will wait outside the restroom.

Lunch Procedures

- For the 21-22 school year, all students are eligible to receive a free lunch and grab and go breakfast snack at their first recess.
- Students do not have to select milk, as all meals will contain the required nutritional elements.
- Meals will include one vegetarian option or one meat option. See the menu [here](#).
- Students must wear a mask when in the cafeteria to select a meal or use the restroom.
- Students can remove their mask to eat and drink.
- Lunch will be outside with tape on tables to indicate maximum social distancing available (2-3 feet).
- Students should bring a refillable water bottle to school and are welcome to bring a lunch from home.

What to bring on campus?

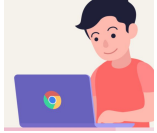
Come prepared for class:



Mask - plus an extra one



Don't forget
earbuds/headphones



Bring a fully charged
chromebook (new students
will receive one within the
first week of school)



Filled water bottles & snack



Leave other non-essential
items at home



Workbooks, textbooks, and
homework, if requested by
teacher



Additional Photos for Your Reference



Walking entrance
on far side of
Cresta Vista Lot



Blossom Valley Bible
Church Lot (a good option to
park and walk in - access
via Castillon Way)



Encinal Dr. Lot 3rd-6th
drop off area



Small Encinal Dr. Lot for
school busses ONLY

We Will Continue to Share Information

We look forward to an outstanding 2021-22 school year!

- Subscribe to our google calendar at santateresa.ogsd.net.
- BTSN is virtual on September 2nd at 6:00 pm.
- Get involved with our Home and School Association.
Our first meeting is on September 14th. Information will come via Parent Square.