

The Suffield 350th Anniversary Barn Quilt Trail

What's A Barn Quilt?

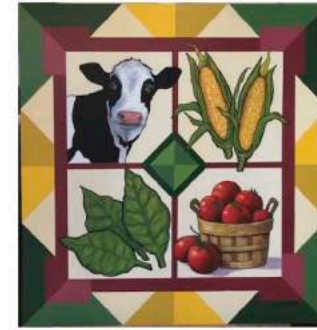
Barn quilts are colorful quilt patterns painted on wood panels. They may be based on a traditional quilt pattern or something more modern.

and a Barn Quilt Trail...

A Barn Quilt "Trail" is a series of barn quilts displayed in a community, with directions to help people find them!

The Suffield/West Suffield Barn Quilt Trail is made up of 38 works of art by our friends and neighbors. Christine MacClintic, who has experience with public art projects, led our barn project with support from local artist Laurie Tavino.

Special thanks to the Town of Suffield Highway Department for working overtime to get the last 13 quilts hung high up on barns before May 15.



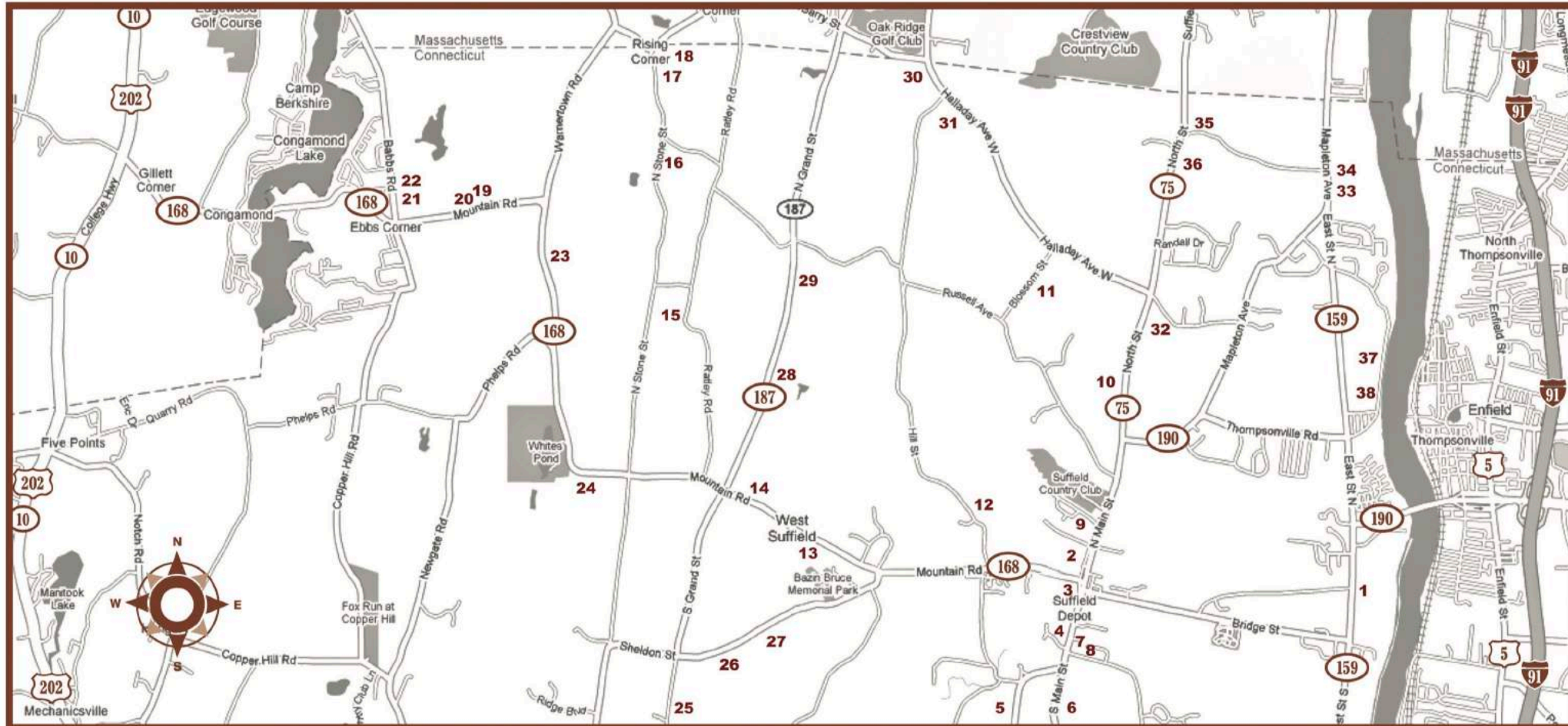
190 East Street North

Bielonko Farms
by Laurie Tavino



63 High Street

Sunrise over a Farmers Field
by Becki Chiarello



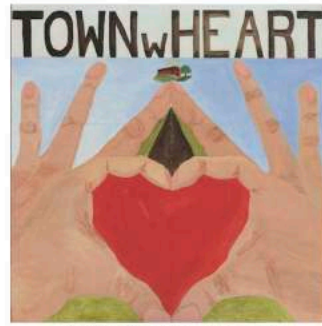
The Suffield 350th Anniversary Barn Quilt Trail



55 Main Street
Phelps-Hatheway House
Spring Garden
by Katherine Tolve



145 South Main Street
Farm Squares
by Maggie Sleeper



450 South Street
Suffield Community Aid
A Town with Heart
by Caroline d'Otreppe



472 South Main Street
Compass Rose
by Christine MacClintic



234 South Main Street
King House Museum
Colonial Rose
by Laurie Tavino



234 South Main Street
King House Barn
Cigar Delivery Wagon
by Bev Sikes



321 North Main Street
Tulips
by Deborah Pileika



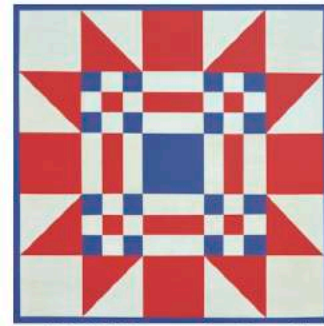
681 North Main Street
Sunshine, Water and Plants
by Becki Chiarello



1174 Blossom Street
Four Flowers
by Ellie Binns



472 Hill Street
We Love Our Cows
by Bridget Kaplan



1037 Mountain Road
Country Patriotic
by Suffield in Stitches



1240 Mountain Road
Dove at the Window
by Gayle Demko



653 to 694 Ratley Road
Barn between the houses
Tobacco Season
by Linda Zaffetti



1242 North Stone Street
Polish Eagle
by Jamie Drenzek



1510 North Stone Street
Cupola Hollow Farms
Jams & Jellies
by Kathy Dunai



1576 North Stone Street
Vincent Farms
by Kathy Dunai



3152 Mountain Road
Magnolia Stables
Magnolia Star
by Roxanne Verbridge



3152 Mountain Road
Magnolia Stables
Sky Quilt
by Roxanne Verbridge



216 Babbs Road
Tobacco Barns
Tobacco Flower
by Laurie Tavino



216 Babbs Road
Tobacco Barns
Giant Sun
by Helen Falkowski



2800 Mountain Road
Silly Ass Quilt
by Ann Huntington
Mickelson



1971 Mountain Road
Kuras Farms
Better Blueberries
by Barbara Rice



1080 South Grand
Street
American Star
by Suffield in Stitches



1393 Sheldon Street
**We Believe in the
Future of Agriculture**
by Suffield Regional
Agriscience Students



1321 Sheldon Street
**Tobacco Leaf
Kaleidoscope**
by Lynelle Kuzontkoski



400 North Grand Street
In Memory of Fran
by Diane Christian



896 North Grand Street
Four Seasons
by The Taravella Family



1241 Halladay Avenue
**Sunshine and
Tobacco Plants**
by Becki Chiarello



1063 Halladay Avenue
Cozy Chartreuse
by Stephanie Garofalo



129 Halladay Avenue E.
Rainbow Tractor
by Beth Chafetz



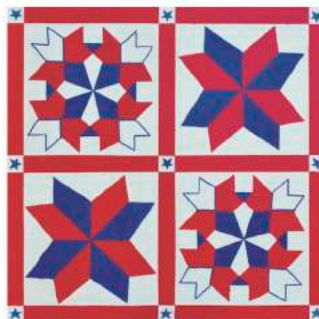
1600 Mapleton Avenue
Hilltop East
Wings of an Eagle
by Joyce Belliveau



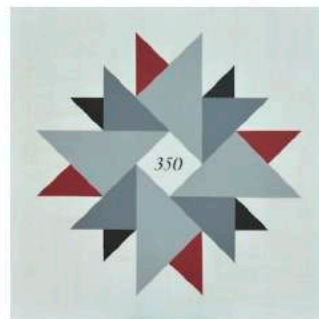
1616 Mapleton Avenue
Hilltop Farm
Walks With Sunflowers
by Victoriiah Hall



4 Hickory Street
Family Tree
by Erin Magoon



1600 North Street
Barn Stars
by Terry Mandirola



931 River Blvd.
350
by Maureen Taravella



819 River Blvd.
Bee Flowers
by Laurie Tavino

The Suffield 350th Anniversary Barn Quilt Trail was funded
in part by a grant from the J. Gladwin Cannon Trust

- | Quilt# | Location |
|--------|------------------------------------|
| 1 | 190 East St. North, Suffield |
| 2 | 63 High St., Suffield |
| 3 | 55 South Main, Suffield |
| 4 | 145 South Main, Suffield |
| 5 | 450 South St., Suffield |
| 6 | 472 South Main, Suffield |
| 7 | 234 South Main, Suffield |
| 8 | 234 South Main, (Barn) Suffield |
| 9 | 321 North Main, Suffield |
| 10 | 681 North St., Suffield |
| 11 | 1174 Blossom St., Suffield |
| 12 | 472 Hill St., Suffield |
| 13 | 1037 Mountain Rd., Suffield |
| 14 | 1240 Mountain Rd., Suffield |
| 15 | 653 to 694 Ratley Rd., W. Suffield |
| 16 | 1242 N Stone St., W. Suffield |
| 17 | 1510 N Stone St., W. Suffield |
| 18 | 1576 N Stone St., W. Suffield |
| 19 | 3152 Mountain Rd., W. Suffield |
| 20 | 3152 Mountain Rd., W. Suffield |
| 21 | 216 Babbs Rd., W. Suffield |
| 22 | 216 Babbs Rd., W. Suffield |
| 23 | 2800 Mountain Rd., W. Suffield |
| 24 | 1971 Mountain Rd., W. Suffield |
| 25 | 1080 South Grand St., W. Suffield |
| 26 | 1393 Sheldon St., W. Suffield |
| 27 | 1321 Sheldon St., W. Suffield |
| 28 | 400 North Grand St., W. Suffield |
| 29 | 896 North Grand St., W. Suffield |
| 30 | 1241 Halladay Ave., Suffield |
| 31 | 1063 Halladay Ave., Suffield |
| 32 | 129 Halladay Ave., East, Suffield |
| 33 | 1600 Mapleton Ave., Suffield |
| 34 | 1616 Mapleton Ave., Suffield |
| 35 | 4 Hickory St., Suffield |
| 36 | 1600 North St., Suffield |
| 37 | 931 River Blvd., Suffield |
| 38 | 819 River Blvd., Suffield |

Enjoy A Day in Suffield!

There's so many fun activities going on - invite a visitor and make a day of it!



Don't forget to top it off with Eats & Drinks at one of Suffield's great restaurants.

The Suffield 350th Anniversary Barn Quilt Trail



Established May, 2021

*Look for quilt markers along the trail

