

COVID-19 Response at Tukwila- Fall 2021

By: Nicole DeBoer and Hannah Maestro





Fall 2021 Updates

FACE COVERINGS

- Masks are required to be worn by students and staff both indoors and outdoors, regardless of vaccination status.

SOCIAL DISTANCING

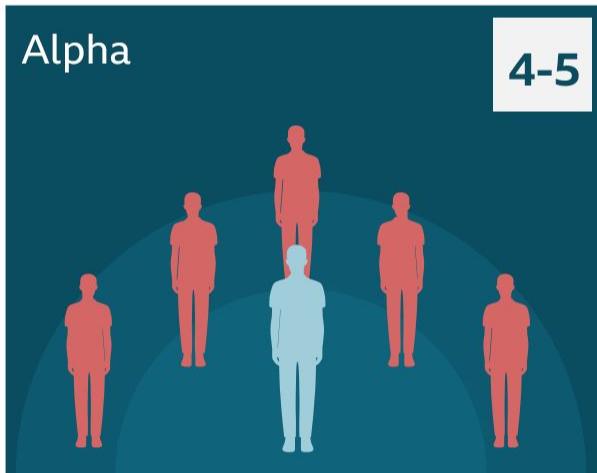
- Students should maintain a distance of **3 feet or more**, and staff members **6 feet or more**.
- Maximize distance in common areas, such as hallways and lunchrooms

SCREENING/ATTESTATIONS

- No longer being performed within schools
- Students should be encouraged to report any symptoms to staff members, and parents encouraged to do an symptom screening of their own before leaving home.

VACCINATIONS

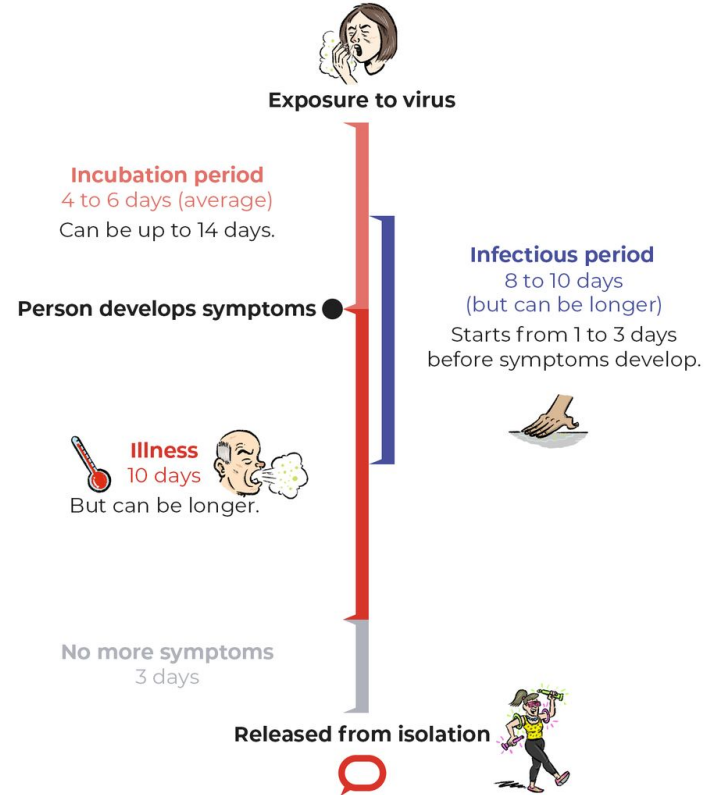
- According to Gov. Jay Inslee: “K -12 educators, school staff, coaches, bus drivers, school volunteers and others working in school facilities will have until October 18 to be fully vaccinated as a condition of employment”
- Students will not be required to receive COVID vaccines.



Viral Transmission

- Transmitted through exposure to infectious respiratory fluids.
- Infection risk varies depending on how much of the virus a person is exposed to (duration and location).
- Infected people are most contagious two days prior to symptoms and are contagious for up to 10 days.
- Most people show symptoms and/or test positive 5 days after exposure.

Coronavirus progression in majority of cases





What Happens if a Student Becomes Sick at School?

Step 1: Isolate

- The student is taken to the school's isolation room.
- The health team member should don their PPE prior to entering the room, and remain with the student.

Step 2: Notify

- The health team member present will instruct a staff member to notify the student's guardian and request that they bring the student home.

Step 3: Assess

- Document student's demographics, symptoms, medical history, and exposure risks.
- Identify close contacts

Step 4: Clean

- Notify custodians of potential positive case. The isolation room and classroom should remain closed for 24 hours before a deep cleaning takes place.

Step 5: Contact Tracing

- Once student is sent home, begin contact tracing protocol.



Contact Tracing Steps and Process

Steps:

1. Initial notification of person under investigation (PUI) or “index case.”
2. Interview the PUI and provide guidance on isolation.
 - Determines close contacts, last date at school, symptoms, etc.
3. Locate and notify contacts who may have been exposed.
 - This includes staff AND students.
4. Inform close contacts and advise them to begin quarantine.
5. Monitor close contacts.
 - Follow up and monitor test status (if positive, go back to step 1)

Source: “Making Contact: A Training for COVID-19 Contact Tracers”

COVID-19: Quarantine vs. Isolation

QUARANTINE keeps someone who was in close contact with someone who has COVID-19 away from others.



If you had close contact with a person who has COVID-19



- The best way to protect yourself and others is to [stay home for 14 days](#) after your last contact. Check your [local health department's website](#) for information about options in your area to possibly shorten this quarantine period.



- Check your temperature twice a day and watch for symptoms of COVID-19.



- If possible, stay away from people who are at higher-risk for getting very sick from COVID-19.



ISOLATION keeps someone who is sick or tested positive for COVID-19 without symptoms away from others, even in their own home.



If you are sick and think or know you have COVID-19



- Stay home until after
 - At least 10 days since symptoms first appeared **and**
 - At least 24 hours with no fever without fever-reducing medication **and**
 - Symptoms have improved



If you tested positive for COVID-19 but do not have symptoms



- Stay home until after
 - 10 days have passed since your positive test



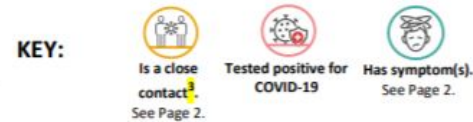
If you live with others, stay in a specific “sick room” or area and away from other people or animals, including pets. Use a separate bathroom, if available.

Isolation vs. Quarantine

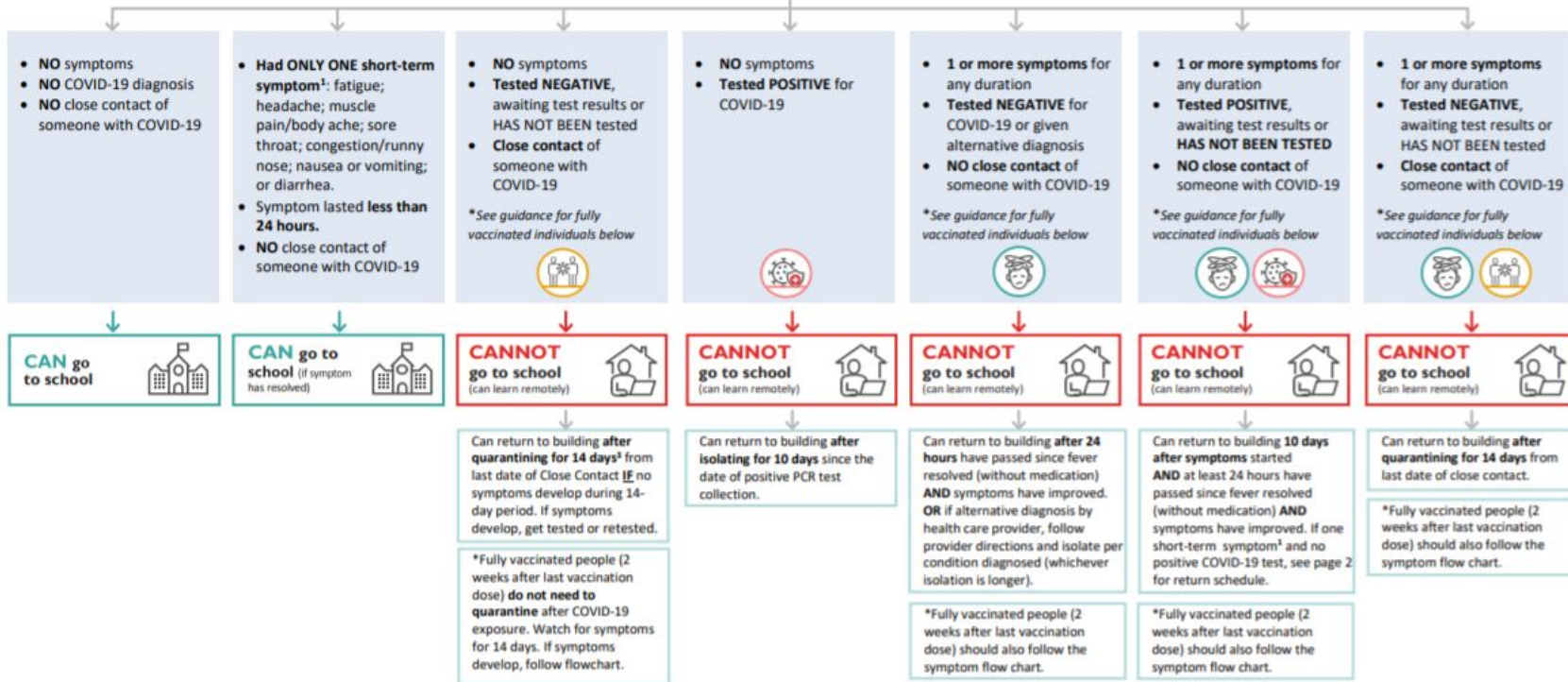
- Close contacts are notified and advised to **quarantine** for 14 days following exposure
- Those who test positive and/or are symptomatic are asked to **isolate** for 14 days.

Need more information? Click [here](#)

COVID-19 Return to Work/School Flow Chart



SCREEN STAFF OR STUDENT FOR COVID-19



What are “close contacts”?



CLOSE CONTACT DEFINITION³

“Close Contact” includes anyone in one or more of the following categories:

- Been within 6 feet (2 meters) of a person with COVID-19 for a combined total of 15 minutes or more within a 24-hour period
- Live in the same household as a person with COVID-19
- Cared for a person with COVID-19
- Been in direct contact with saliva or other body secretions from a person with COVID-19 (for example: been coughed on, kissed, shared utensils, etc.)

Public Health will help identify close contacts.

If you’ve been exposed to someone with COVID-19 and you have no symptoms, Public Health recommends the following:

1. Stay in quarantine for 14 days after your last contact. **This is the safest option.**
2. If this is not possible, stay in quarantine for 10 days after your last contact, without additional testing.
3. If the first two options are not possible, stay in quarantine for 7 full days beginning after your last contact **and** if you receive a negative test result (get tested no sooner than day 5 after your last contact). *This option depends on availability of testing resources and may not be recommended in some settings.*

*Fully vaccinated people (2 weeks after last vaccination dose) with no symptoms **do not need to quarantine** after COVID-19 exposure. Watch for symptoms for 14 days. If symptoms develop, follow flowchart.



Notification Process

Included in notification:

- Close contacts are notified **as soon as possible** with quarantine and testing guidance.
- Transportation (if applies to the student).
- Custodial is notified of students location(s) on campus for appropriate sanitization procedures.
- Teachers are notified to excuse absences.
- Staff wide email notification of campus exposure.

Not included in notification:

- Confidential student information including but not limited to:
 - Name
 - Family Information
- It is at the students discretion to tell teachers and others that they have COVID.
- We CANNOT tell teachers and staff students medical information.



Isolation and Quarantine Calculations

Calculate start and end dates:

1. Determine the date and time of PUI's first COVID symptom and/or positive test result.
2. From this date, go back 48 hours - use this for the start time of infectious period.
3. Determine day PUI entered isolation - this ends the contact tracing period.

Source: "Making Contact: A Training for COVID-19 Contact Tracers"

Contact type	Test positive and or symptomatic	Close Contact	Household member who tested positive
Quarantine Length	14 days From positive test date and/or symptom onset	14 days From last known exposure with positive individual	24 days Per DOH guidelines 10 day quarantine for infected family member + 14 days for student in household with ongoing contact with positive family member
Additional Guidance	Do NOT return to school until symptom free for over 24 hours	Monitor for COVID symptoms - if later test positive 14 days resets	Monitor for COVID symptoms - if later test positive quarantine resets

Explaining the 24 day Quarantine

When a CLOSE CONTACT OF someone with Confirmed COVID-19 can return to school:

A close contact is anyone who meets any of the following:

- Living in the same household as a person with COVID-19, **OR**
- Caring for a person with COVID-19, **OR**
- Being within 6 feet of a person with COVID-19 for a combined total of 15 minutes or more in a 24-hour period, **OR**
- Being in direct contact with saliva or other body secretions from a person with COVID-19 (e.g., being coughed on, kissing, sharing utensils, etc.).

Close contact definition still applies even when a person with COVID-19 or the close contact wore a cloth face mask or shield.

1. 14 days since last exposure to person with confirmed COVID-19.*
1. Date of last exposure: _____
 - a. +14 days: _____ [date you return to school]

If the close contact becomes symptomatic or tests positive for COVID-19 during their 14-day quarantine period, they must follow a new period of isolation based on the CONFIRMED or SUSPECTED guidelines above. More information available from the [Washington State Department of Health](#).

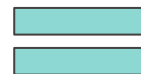
***If you've been exposed to someone with COVID-19 and you have no symptoms, Public Health recommends the following:**

1. Stay in quarantine for 14 days after your last contact. **This is the safest option.**
2. If this is not possible, stay in quarantine for 10 days after your last contact, without additional testing.
3. If the first two options are not possible, stay in quarantine for 7 full days beginning after your last contact ***and*** if you receive a negative test result (get tested no sooner than day 5 after your last contact). *This option depends on availability of testing resources and may not be recommended in some settings.*

Date of last exposure = the date at the **end** of the infected household members contagious period. This is up to 10 days after symptom onset/positive test result



14 day quarantine period following close contact with + COVID-19




24 Days Total

What if I am Vaccinated?



- Fully vaccinated: Two weeks post second dose of Moderna or Pfizer Vaccine, or single dose of J&J vaccine.
- Currently no post-vaccination time limit on fully vaccinated status.
- Previous time limit was 3 months post-vaccination, however people who are 90+ days post show vaccines are still proving to be effective, so this statement was retracted by the CDC.
- **If you have been fully vaccinated and are exposed to COVID - you are no longer required to quarantine OR get tested so long as you are NOT symptomatic.**
- If you travel domestically, you do not need to get tested before or after, or self-quarantine after your trip unless symptomatic.
- If symptomatic, initiate quarantine and get tested as soon as possible.
- District requirements still include wearing a mask and practicing social distancing.
- Click [here](#) for additional information and guidance from CDC.

What do I do as a District Nurse?

- 
- Contact trace as soon as I am informed of case, exposure, or symptomatic student.
 - Notify students, family, and staff of exposure to positive case.
 - Test students.
 - Additional screening of students.
 - Check in with students and families with known cases.
 - Attend state and county wide meetings regarding school COVID-19 protocols.
 - Report cases and close contacts to King County DOH.
 - Refer eligible students and staff to vaccine locator.
 - And much much more!



Have Questions?

- Email us! covid@tukwila.wednet.edu
- Reference the [King County Schools COVID-19 response toolkit](#)

Visit some of these other helpful resources:

- [COVID-19 Clinical Questions and Answers \(CDC\)](#)
- [King County Schools and Child Care Guidance](#)
- [CDC Contact Tracing Guidelines](#)
- [Scientific Brief on COVID Transmission \(CDC\)](#)
- [COVID-19 Data Dashboard for King County](#)