



*walden*

**Return-to-  
Campus  
Roundtable**

August 23 & 24, 2021



# Topics we will cover today

- Walden COVID-19 Pandemic Response Team
- Guiding Principles
- On-Campus Prevention Strategies and Protocols
- Drop-off and Pick-up Procedures
- Daily Schedule
- Health and Hygiene Best Practices
- Cleaning & Disinfecting Protocols
- Physical Distancing
- Snack and Lunch Policy
- Student Cohorts/Groups
- Campus Visitors
- Necessary vs. Discretionary Events
- Exposure Management Plan
- Quarantine Policy and Protocols
- Q&A

## Walden School Pandemic Response Team

Terra Toscano, Head of School

Nellie Yoshimura, Pandemic Coordinator

**Clinical Consultant: Kathy Larson, RN, CLE**

Kelli Dawn Holsopple, Director of Curriculum

Billy Christian, Director of Admissions

Danica Hamilton, Program Administrator

Birthe Landerer, Director of Communications

Ludia Chae-Zerrudo, Director of Annual Giving

Val Martinez, Facilities Coordinator

Gio Luna, Security Officer

Walden closely follows public health and educational agencies daily for the most up-to-date information about COVID-19 and best practices.



# Guiding Principles to Support Campus Safety

- Prioritize our ongoing cautious and conservative approach to health and safety by reducing risks while keeping the academic program intact, recognizing we cannot eliminate all risks
- Meet or exceed requirements by the CDC, Departments of Public Health, and Pasadena Health Department, as well as the updated framework for schools
- Build in flexibility to move between restrictions in our learning environment if required by changing COVID guidance





# Community Effort

Our success over the next year will be largely dependent on our attention and diligence to community adherence to the health and safety protocols.

We ask that all families comply with directives issued by state and local government health departments, as well as the school, regarding all measures imposed to reduce the spread of COVID-19.



# Summary of COVID-Mitigation Protocols

- Mandated vaccinations for faculty, staff, and outside instructors, substitutes, and vendors that work with students
- Weekly COVID-testing for students and adults, including vaccinated faculty and staff
- Required face coverings indoors and outdoors for everyone, regardless of vaccination status
- Daily symptoms screening (Magnus Health app) and COVID-modified drop-off and pick-up procedures
- Hand hygiene, assigned student bathroom use, and rigorous campus cleaning routines



# Summary of COVID-Mitigation Protocols

## Cont'd

- Effective classroom ventilation and continued use of outdoor spaces for learning
- Physical distance during instruction, maximized based on space availability, lunch outdoors or with screens if indoors
- Limited movement among student cohorts so we can return to our full specialty and after-school programs
- Rigorous contact tracing, quarantine, and response testing to prevent case spread in the event of a positive COVID case.



# Mandated Vaccines

To safeguard the health and well-being of the Walden community, all faculty and staff are required to be fully vaccinated against COVID-19.

## Weekly Testing

- Requirement: Weekly COVID PCR test for on-campus students and adults, including at this time vaccinated faculty and staff, administered by Omni Pathology
- Testing window: Each week on Friday afternoons on campus during the school day





# Required Face Coverings

- All students, faculty, staff, and campus visitors are required to wear a face covering at all times on campus, indoors and outdoors, regardless of vaccination status.
- Your child should have a mask that will last them throughout the day without breaking. Please send your child with an extra mask in case they need a replacement.
- Walden will maintain a limited supply of disposable face coverings available if students misplace or render theirs unwearable for the duration of the school day.





# Daily Symptom Screening

Families will be required to complete the Magnus Health Screening each day before school. School personnel will be checking the status of the screening upon student arrival. Students will not be allowed on campus until screening is completed.

- Complete the questionnaire by 7:30 a.m. for each of your children each day. Upon completion, your child will receive a green or red badge.
  - A **green badge** means that your child is clear to come to campus.
  - A **red badge** means COVID risk factors are considered high and/or you have received a positive COVID test result. You may not come to campus.



# Daily Symptom Screening

What happens if I get a **red badge**?

- You and all of your children need to stay home, even if only one child has a red badge.
- Contact the front office and let them know that your children will not be in school that day.
- After you have consulted with the appropriate medical professionals, share your care plan with Walden staff. You can email Nellie directly at [nyoshimura@waldenschool.net](mailto:nyoshimura@waldenschool.net)
- You may stop completing the daily screener while your family is under the care plan and while you are not on campus. Once you have completed the recommended plan and can provide a green badge, you can resume with daily screening for your children.





# Modified Drop-Off and Pick-Up Procedures





# Modified Drop-Off and Pick-Up Procedures

- No parking and no in-person drop-off on campus for K-6th students
- Morning drop-off will be staggered by class from 8:00 to 8:15 and 8:15 to 8:30 a.m.
- Dismissal will be staggered by class between 2:45 and 3:30 p.m.
- Early morning care and Village procedures will be sent when you are registered.
- Use the carline, remain in your vehicle, drop-off your children at their designated gate and time with staff support.





First, you will  
drive up in your  
car and a staff  
member will  
wave to you  
from the gate.

Next ...





Your child's  
temperature  
will be taken  
in the car.





Your  
child will  
get out of  
the car  
and walk  
through  
the gate  
to the  
yard.





# Hand-washing Stations North and South Yards

- Students will wash their hands when they arrive and at scheduled times throughout the day
- Hand washing before snack and lunch, recess, after recess
- Sing “Happy Birthday” twice!



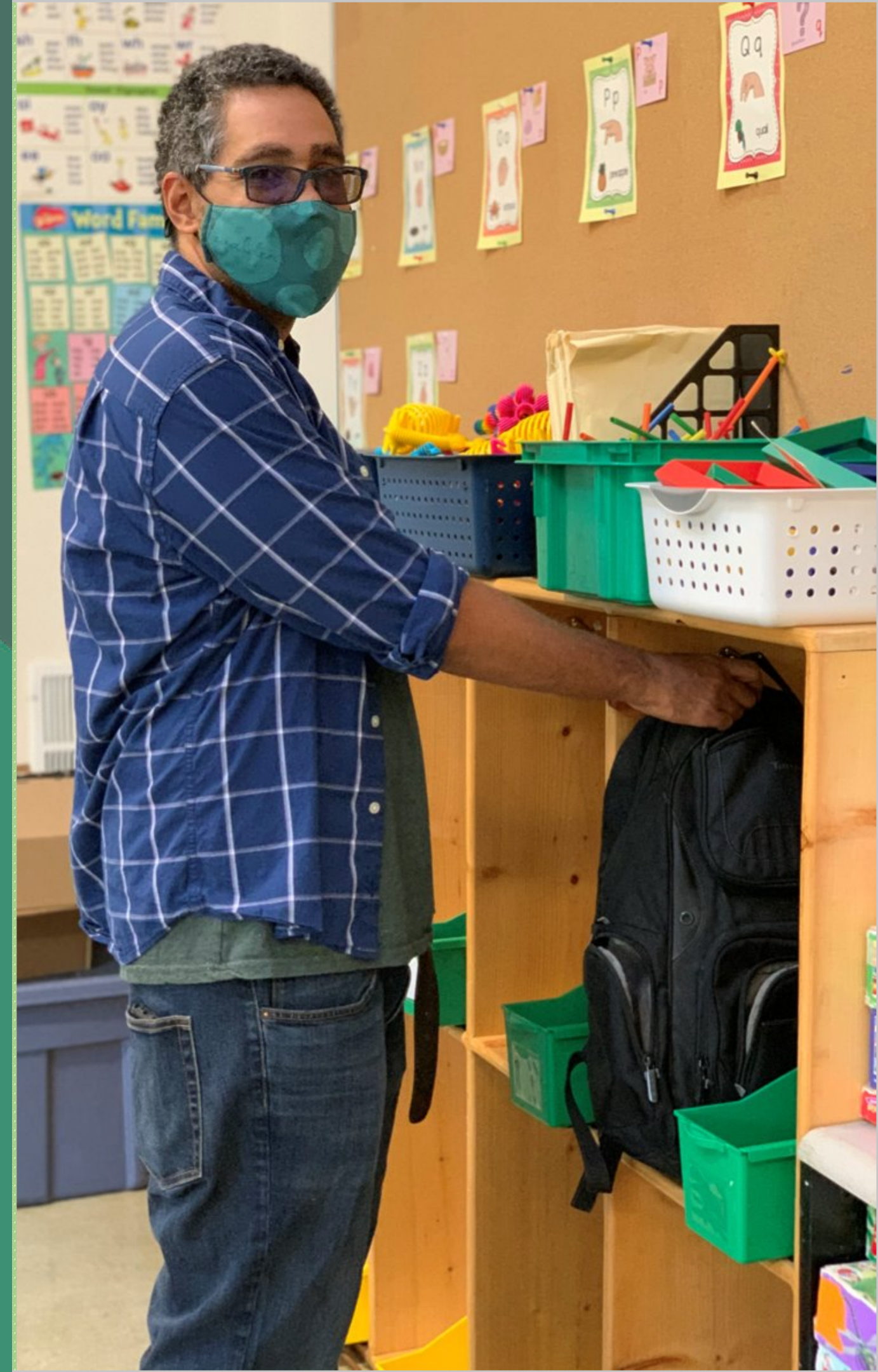


Time to  
line up  
to go  
inside!





In the classroom,  
your child will put  
their backpack in  
their cubby.





When we line up to go outside for recess or dismissal, we will line up on circles, with distance in between.



# Monday-Friday Schedule

## KINDERGARTEN – 6TH GRADE

### Arrival

8:00–8:15 a.m.: Arrival for K/1 and 2/3

8:15–8:30 a.m.: Arrival for 1/2, 4/5, 6

### Morning Classes

- Morning Meeting
- Outdoor Snack and Play
- Two Academic/Specialty Blocks

### Lunch and Recess

11:00 a.m. –12:00 p.m.

### Afternoon Classes

- Three Academic/Specialty Blocks

### Dismissal

2:45–3:00 p.m. Dismissal for K/1 and 2/3

3:00–3:15 p.m. Dismissal for 1/2, 4/5 and 6

## PRE-KINDERGARTEN

### Arrival

8:00–8:15 a.m.: Arrival for Trina's Class

8:15–8:30 a.m.: Arrival for Tina's Class

### Morning

- Morning Meeting
- Inside Worktime
- Outdoor Time/Specialty Classes
- Snack

### Lunch and Nap

12:00 – 2:15 p.m.

### Afternoon Meeting/Outdoor Time

2:15 – 3:00 p.m.

### Dismissal

3:00–3:15 p.m. Dismissal for Trina's Class

3:15–3:30 p.m. Dismissal for Tina's Class



# Health and Hygiene Best Practices

- Students will be taught and reminded that hand-washing is an important strategy to slow the spread of COVID-19.
- Each classroom has a sink with running water, and hand washing/sanitizing schedules and routines are followed at transition points throughout the day.
- We also have outdoor sinks for students to wash hands before and after meals and at arrival and dismissal.
- Assigned bathroom use: Each cohort has its own assigned restroom stall





# Rigorous Campus Cleaning and Disinfecting Protocols





## Daily Cleaning Schedules

- High-touch surfaces such as doorknobs are cleaned regularly throughout the day.
- Touchless features have been installed in all common areas.
- Classrooms, restrooms, and common areas are disinfected each evening.
- Cleaning supplies (EPA- List N) will be available in all classrooms and will be used when necessary.
- All Water fountains decommissioned, only water bottle fillers in use.

## Air Ventilation and HVAC Practices

- On Walden's campus, HVAC systems are tied to individual buildings, and have been updated as necessary throughout the years.
- Last year, we upgraded to MERV 13 air filters in classrooms, and the filters are on a replacement schedule.
- In addition, we have UV lights in each classroom, along with excellent cross ventilation through windows and open doors.





# Physical Distancing

- Due to Walden's generous classroom size, we will be able to maintain the recommended 3ft of distance in the classroom. Physical distancing during instruction in classroom spaces will be maximized based on available space.
- Outdoor tents and classrooms will also continue to be used.





# Student Cohorts/Groups

- A Walden cohort in 2021–2022 is defined as a full class or an after-school enrichment class, or the group in morning or after-school care (Pre-K, K–3rd and 4th–6th).
- The stable group is assigned to a particular area/classroom of our 1.5-acre campus; may make limited moves to other spaces on campus as necessary to access specialty classes or small groups.
- For the stable grouping, we have revised recess schedules and segmented areas to provide increased time for outdoor activities while limiting the number of students on the playgrounds and common areas to ensure social distancing.



# Snack/Lunch Policy

- Students will eat snack/lunch each day with their class.
- Snack will be outside and distanced.
- Lunch will be inside the classroom. Students will be distanced and each have an individual desk shield during lunch.
- Students will bring snack/lunch from home to school.
- The Parent Guild also offers individually packaged lunches for purchase on Tuesdays, Wednesdays, and Thursdays.

# Campus Visitors

Campus visits by parents and caregivers are informed by two primary safety factors:

- Keeping as safe a campus environment as possible by aligning with science and government guidance
- Limiting the number of visitors on campus, recognizing our primary goal of as safe a campus environment as possible





# Campus Visitors

## Necessary Events

- Critical to the delivery of our mission and our partnership with families
- Necessary for all parents to have access to, regardless of vaccination status
- May require a COVID-19 vaccination and/or negative PCR COVID test

## Discretionary Campus Visits

- All on-campus events and visits not deemed necessary
- Must be scheduled in advance
- Fully vaccinated individuals may attend these types of on-campus events
- Unvaccinated individuals may not attend these types of on-campus events



# Rigorous Contact Tracing, Quarantine, and Response Testing

Walden will use rigorous contact tracing, quarantine, and response testing to prevent campus spread in the event of a positive COVID case.

In these instances, Pasadena Public Health is our close partner and the final decision-maker on required steps for impacted families and the school. The school follows county guidance.





# Signs and Symptoms

- Sign: What is visible
- Symptom: What is felt
  - May appear 2–14 days after infection
  - Can range from little or no symptoms to severe illness

## Primary Symptoms

- Fever of 100.0 or above
- Shortness of breath
- Persistent cough
- New loss of taste or smell

## Secondary Symptoms

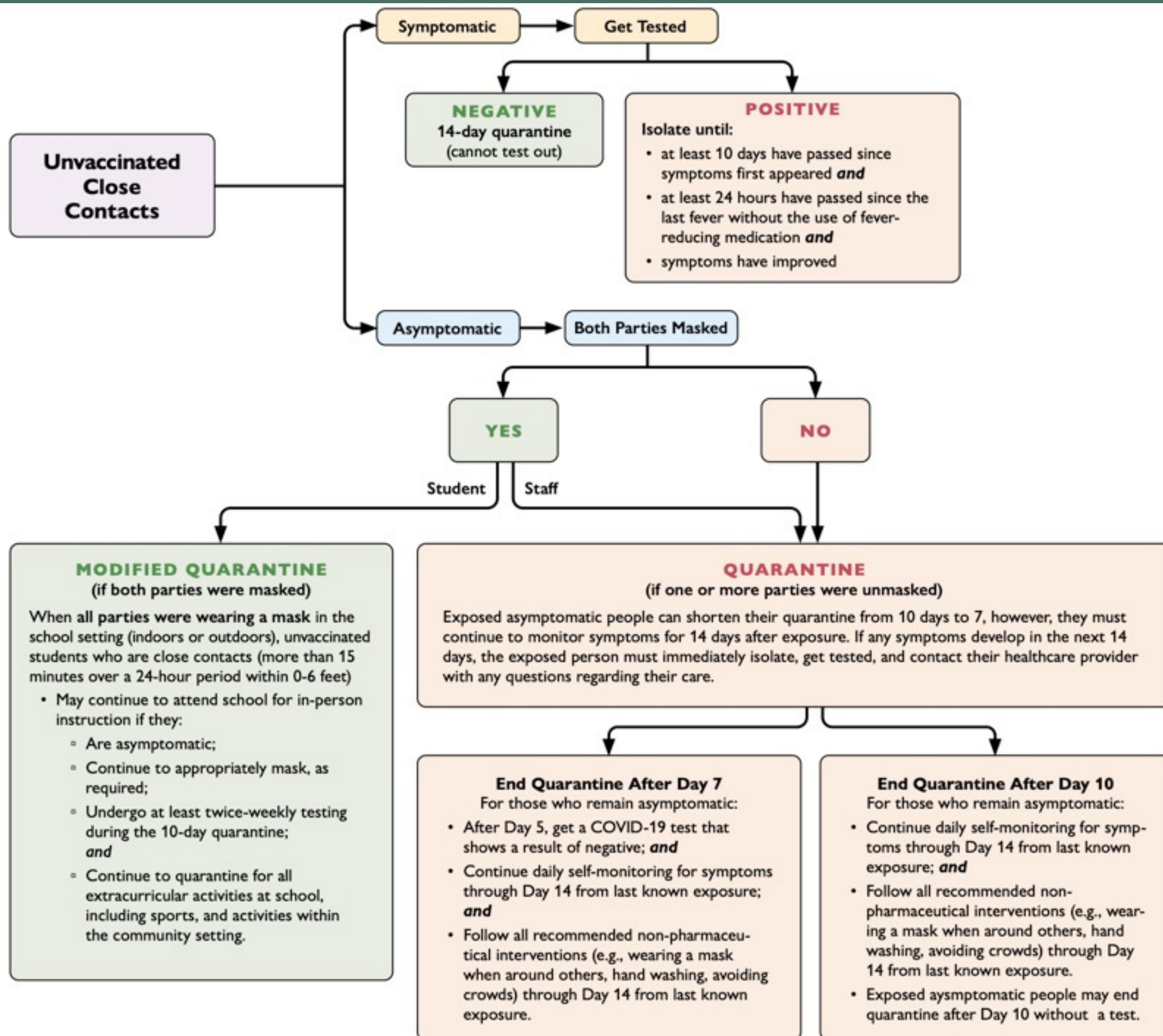
- Fatigue
- Muscle or body aches
- Headache
- Sore throat
- Congestion or runny nose
- Nausea or vomiting
- Diarrhea



# Health Department Exposure Management Plan

| Exposure to 1 Covid-19 Case at School                                  | Exposure to 2 Covid-19 Cases at School   | Exposure to 3+ Covid-19 Cases at School                          |
|--|--|--|
| 1. School notified of 1 confirmed case at school                       | 1. Follow steps 1-7 for 1 confirmed case | 1. If cluster of >3 cases within 14 days, school notifies DPH    |
| 2. Case on Home Isolation  |  | 2. Follow steps 2-7 for 1 confirmed case                         |
| 3. Advise case to get tested & DPH will contact                        |  | 3. DPH investigates if outbreak criteria met & works with school |
| 4. Identify close contacts at school                                   |  | 4. School provides updates to DPH until outbreak resolved        |
| 5. School consults with DPH  |  |  |
| 6. School notifies contacts of school exposure & DPH will contact case |  |  |
| 7. School sends general notification to inform school                  |  |  |







# Exposure Management Plan

If symptoms of COVID-19 illness occur at school:

- Students will wait in isolation area with supervision
- Student given a surgical mask to wear (if tolerated)
- Arrangements made for parent/caregiver to pick up student
- School advise parent to contact health care provider and get tested for COVID-19
- School provide information to parent/caregiver on resources to get tested for COVID-19





# Walden's Quarantine Policy

If a student tests positive for COVID-19:

- Symptomatic children may return to school after ten days from the onset of symptoms without testing AND at least 24 hours have passed since the resolution of fever without the use of fever-reducing medications AND other symptoms have improved.
- Asymptomatic children may return to school when at least ten days have passed since the date of the first positive COVID-19 test. If they develop symptoms, then the strategies for discontinuing isolation for symptomatic persons (see above) should be used.
- Students cannot test out of the 10-day quarantine period.





# Walden's Quarantine Policy

If a student is exposed to COVID-19 when both parties are wearing a mask:

- The child may continue to attend school for in-person instruction if they are asymptomatic and continue to mask appropriately, as required.
- The child must undergo twice weekly testing during the 10-day period; and continue to strictly adhere to Walden's cohorting requirement in all settings.





# Walden's Quarantine Policy

If a student is exposed to COVID-19 and both parties were not wearing masks:

- The child must quarantine for 10 days. The quarantine can end after day 10 from the date of the last exposure.
- With permission from PPHD, quarantine can end after day 7 if a COVID test is taken 5 days from the date of the last exposure and the test is negative.
- Self-monitoring for symptoms must continue for 14 days. Children must be asymptomatic to return to school.





# Quarantine Learning Plan Essentials

- Work assignments through Seesaw/Microsoft Teams
- Check-ins with classroom teacher once a week
- Support and feedback through Seesaw/Microsoft Teams
- Special activities or events
- Orientation to quarantine and check-in from Kelli Dawn
- Learning Specialist
- Well-being





# Walden's Quarantine Policy

## Quarantine after travel:

- We ask that you avoid all unnecessary travel.
- Beginning September 9, for student domestic or international travel, Walden will follow the CDC's recommendations for people who are not fully vaccinated:
  - Getting tested 1–3 days before your trip.
  - Get tested with a viral test 3–5 days after your return AND stay home for a full 7 days after travel.
  - If you test positive, please isolate, and protect others from getting infected.
- There is no quarantine period required for students following parent/guardian travel.





# Walden's Quarantine Policy

Quarantine for all students following school breaks:

Currently, we do not require quarantine (and distance learning) following school breaks. We will be responsive to changing conditions and will watch for cues from our local, state, and federal health authorities.

However, if your unvaccinated child travels, the previously stated quarantine does apply.



# A Note on Upcoming Events

- Back-to-School Night will be virtual this year. This is an important time to provide program information, and we will choose the safest way to hold these events.
- When choosing the format for any event this year, we will take into consideration the varying levels of comfort in the Walden community with the goal of offering virtual, hybrid, and in-person events.
- With the current community transmission rates, we will evaluate our ability to host in-person events every two weeks.





The background is a solid dark teal color. In the top-left corner, there are stylized, light teal leaf and flower shapes. In the top-right corner, there are small, light teal daisy-like flowers. In the bottom-left corner, there are large, flowing, light teal abstract shapes. In the bottom-right corner, there are vertical, light teal brushstroke-like patterns.

Thank  
You!