



GUIDE TO REOPENING

SEPTEMBER 2021



THE STERLING HALL SCHOOL
Where boys belong.

CONTENTS:

1. RETURNING TO SCHOOL SAFELY
2. HEALTH & SAFETY PROTOCOLS
3. ACADEMIC PROGRAM
4. PHYSICAL & OUTDOOR EXPERIENCE

1

RETURNING TO SCHOOL SAFELY

SHS is looking forward to welcoming all boys back to campus in September five days a week. With the health and safety of our community as a top priority, SHS has created this 2021-22 Guide to Reopening, by considering the advice of local and global health experts, and ensuring we meet provincial health and safety guidelines while returning to a more normal, on-campus experience this year, providing our engaging program that focuses on the social, emotional, physical and cognitive needs and growth of each boy.

OUR KEY PRINCIPLES FOR THIS WORK ARE:

1. Maintaining the Health & Safety of our SHS community;
2. Providing the highest degree of excellence within our academic program;
3. Being flexible, agile, transparent; and
4. Working together as a community.

As we move into the Fall and beyond, we will respond according to the public health landscape. This could see mitigation measures relaxed - or alternatively tightened - should it prove necessary. Our plan meets the specifications of the recent Ministry of Education's directions for schools and our experience last year demonstrates that the school can adapt well into a fully remote environment should we be required to do so.

SHS has COVID-19 vaccine policies in place that strongly encourage all eligible students and employees to get fully vaccinated as soon as possible to help protect themselves, their families, and our community. Appreciating the majority of our student body (those under the age of 12) are currently unable to be vaccinated due to age restrictions for the foreseeable future we must balance the risk of transmission and infection of COVID-19 in children with the harm of school closure on their physical and mental health.

Given the evolving nature of this public health crisis, we have created a plan that is flexible, responsive and transparent, with health & safety and our boys' well-being as our top priorities. In addition to safety, we are committed to providing the highest degree of excellence within our academic program for each and every boy.

Notwithstanding the thoroughness of our planning, we recognize that Government guidelines continue to evolve and will most likely result in changes to our plan on an ongoing basis. **Please note information included in this guide is subject to change.** Updated information on protocols and policies will be available on our [Health & Safety](#) webpage and the latest updates will be emailed to you throughout the year.

FAMILY COMMITMENT

As a member of the SHS community, it is up to each of us to take measures on campus, at home, and in our daily lives to keep us all safe as a community. Our work together will control transmission, sustain our on-campus learning experience, and do our part to protect those most vulnerable to COVID-19. We request that all families commit to these responsibilities by digitally signing the Family Commitment form available in the Parent Portal prior to the start of the school year.

AS A FAMILY, WE COMMIT TO:

- Upholding health and safety advice to minimize transmission of COVID-19 by practicing physical distancing, hand and respiratory hygiene, and wearing a mask when advised.
- Complying with all new SHS procedures and protocols to keep our children and SHS faculty and staff safe and healthy while at school.
- Having our son(s) screened using the Sterling Safe screening form prior to being dropped off on campus each day.
- We will not come on to campus if our son(s) or someone in our household is symptomatic.
- We will notify the School of any potential exposures, symptoms, or positive COVID-19 test results in a timely manner.
- In the event a member of our SHS community tests positive for COVID-19, we will continue to treat them and all family members with respect and compassion.
- We will maintain an inclusive and empathic community for all of our boys, faculty and staff and extended SHS families.

OUR FOUNDATIONAL HEALTH AND SAFETY STRATEGIES INCLUDE:

1. Daily symptom screening for employees, students and visitors.

2. Mandatory Rapid Antigen Testing twice a week for all employees and students.

3. Ventilation optimization.

4. Hand hygiene and respiratory etiquette practices.

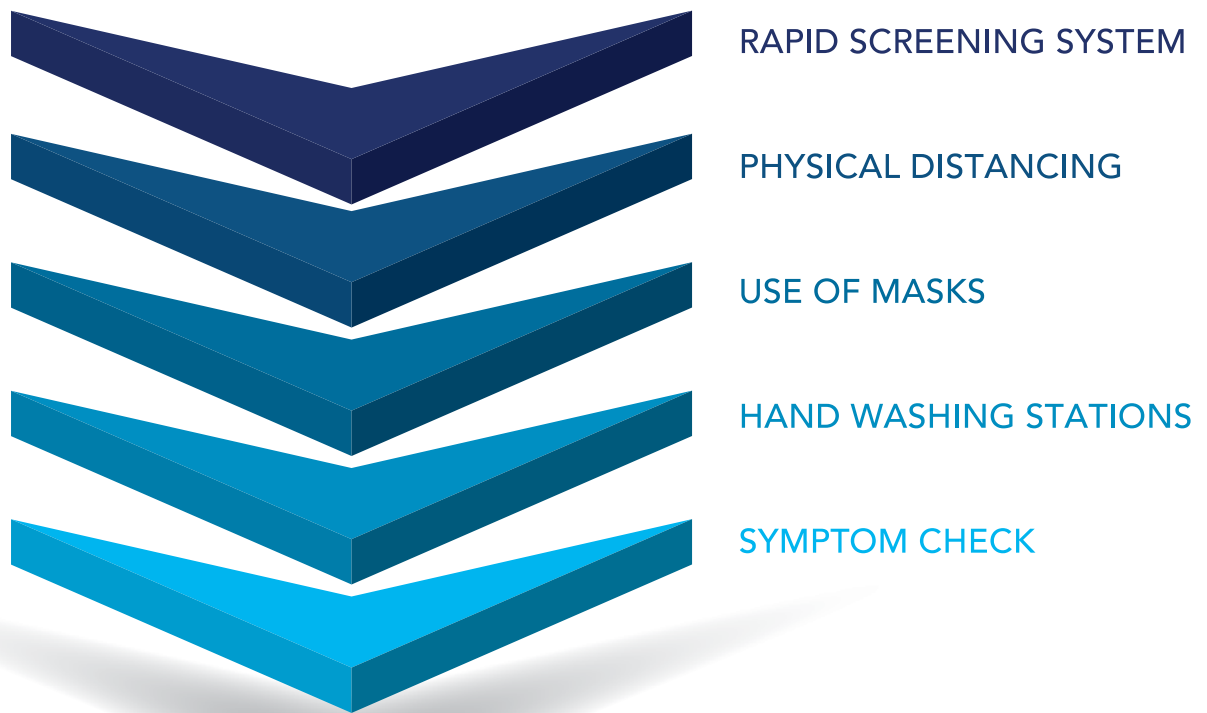
5. Physical distancing of students and cohorts as per Ontario guidelines.

6. Cohorting students into class and grade cohorts.

7. Mandatory masking for employees, visitors and JK-Grade 8.

LAYERS OF PROTECTION: What we have learned is that no singular practice stands alone as a perfect deterrent to infection. Therefore, our mitigation strategy is characterized by overlapping layers of protection and risk reduction. Each of the measures outlined within this plan are by themselves imperfect, but together, and working in support of one another, they can be highly effective in reducing the risk of infection and community spread.

LAYERS OF PROTECTION



Rapid Testing has emerged as a non-invasive, reliable method to keep community members from entering the school site before they become infectious. SHS is part of the Creative Destruction Lab - Rapid Screening Consortium. Additional information will be shared over the coming weeks.

RETURN TO ON-CAMPUS LEARNING AND REMOTE LEARNING ACCOMMODATION

As we return to in-person on-campus learning across the school, remote learning will only be made available as an accommodation due to extenuating medical circumstances. While we recognize that people may need to pivot to remote learning involuntarily throughout the year, we also are mindful of the importance of on-campus learning for students during these formative years. As noted by the Science Table COVID-19 Advisory for Ontario:

“It is therefore essential that, moving forward, the educational, physical, and mental needs of students be highly prioritized and protected to ensure sustained in-person school attendance and in-person learning.”

As such, if a family is considering a remote learning accommodation, please recognize there will be significant changes from last year. We are requiring our teachers to focus on in-person, live teaching of students on campus, and further energies put towards increased co-curricular activities.

As a result, remote learners and families should expect to be doing the majority of work independently and asynchronously with scheduled check-ins with teachers and other remote learners throughout the week.

SHS has the ability to seamlessly transition to a robust, fully Remote Learning Model should a cohort need to self isolate or in the event of a mandated school closure during the 2021-2022 school year.

REMOTE LEARNING ACCOMMODATION

SHS will be returning to dividing the school year into three terms - Fall, Winter and Spring. Families requiring a remote learning accommodation will need to provide notice and medical documentation prior to the start of each term. Consideration for admittance will be based on exceptional medical circumstances.

In the event your child must be remote for a term, please contact Jennifer Colleran, Vice-Principal at jcolleran@sterlinghall.com, as soon as possible, and prior to September 1 for approval, and to learn more about the amended remote learning program being offered this year.

EXTENDED ABSENCE

If a student is absent due to illness or self-isolation, we recommend focusing on healing and recovery. Should the illness/isolation extend past 3 days, please notify the school with a request to join online meetings on the fourth day. Additional details to be provided. Requests for any extended absence for vacation need to be sent to Rick Parsons, Principal at least a month in advance.

2

HEALTH & SAFETY PROTOCOLS AND ENHANCED CLEANING



VACCINATION

SHS has COVID-19 vaccine policies in place that strongly encourage all eligible students and employees to get fully vaccinated as soon as possible to help protect themselves, their families, and our community. The majority of our student body (those under the age of 12) are currently unable to be vaccinated due to age restrictions.

All SHS employees have voluntarily received the COVID-19 vaccination negating the need for a mandatory policy for current employees. However, we will adopt a mandatory COVID-19 vaccine policy for all subsequent hires.



VACCINATION DECLARATION

Eligible students and employees must provide proof of vaccine status prior to the beginning of the school year. In the event of COVID-19 transmission, we recognize that isolation requirements will differ in approach by public health units based on the vaccination status of individuals. As such, this information will be very helpful for contact tracing and the corresponding response. Vaccine declaration forms and additional information can be found in the Parent Portal for eligible students. Please complete these forms as soon as possible.



RAPID ANTIGEN SCREENING (RAPID TESTING)

To further support providing a safe learning environment the school will implement free, routine Rapid Antigen Testing for all students and employees. Further details about the Rapid Antigen Testing will follow shortly.



VENTILATION OPTIMIZATION

Every classroom and office in the school is outfitted with an advanced commercial-grade air purifier that is in use when students and faculty and staff are in the school. Unit settings are optimized for the size of each space and filters are changed on the air purifiers as required by an indicator light on the unit.

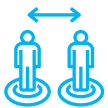
As an added measure, all mechanical ventilation systems were inspected over the summer and adjusted where necessary to ensure that the maximum amount of outdoor fresh air is brought into and distributed throughout the building.

Windows and external doors are often maintained in an open position (weather permitting) to provide natural ventilation.



USE OF MASKS

- Mandatory masking JK - Grade 8.
- Students must wear nose to mouth 3-layer face masks (NMM - non-medical mask grade).
- For the start of school Junior Kindergarten and Senior Kindergarten students will be asked to mask, with the hopes that community infection rates in Toronto and Ontario will decrease substantially, allowing us to make JK/SK masking encouraged but optional.
- Masks are required when moving or in contact with others indoors.
- Face shields are not a substitute for masks, but can be worn by staff in conjunction with masks for additional protection.
- Students can remove their face coverings in their classrooms with permission from their teacher.
- SHS will maintain a supply of non-medical masks if students arrive without a mask.
- Staff will be wearing appropriate masks, with the option of face shields as appropriate.
- SHS will instruct staff and students on the use and care of masks, following recommendations of Public Health Ontario about how to use masks and face coverings. SHS asks families to partner with us in training their sons in the proper care and handling of face masks.
- While SHS staff will assist students' independence in wearing and caring for masks, families are asked to ensure their son is well-trained in both.



PHYSICAL DISTANCING

Classrooms will continue to be reconfigured distancing desks 1.5m apart to allow for a physically distanced layout for students and faculty. Wayfinding markings will be placed throughout the campus to help students manage distancing expectations. Learning spaces will be decluttered to allow for optimal distancing, while maintaining the atmosphere of a normal classroom.



COHORTING

Cohorting is the process of grouping students such that "mixing" is limited so that if a student or staff member develops an infection, the number of exposures is reduced. This process is particularly important for younger children in order to allow for a measure of closer interaction, play and socialization that is particularly central to early-years child development. As such homerooms have been planned to allow for cohorting with small class sizes between 15 - 20 students and grade cohorts of no more than 40 students.

During the limited times during the day when one cohort of students is in the presence of another cohort all individuals will maintain an appropriate physical distance and when inside will wear masks.



QUARANTINE

For those who are travelling to Toronto from other provinces or outside the country, please review the government's [Travel Restrictions, Exemptions and Advice](#) and [Who Can Travel to Canada](#) pages prior to travel.



PROTECTING HIGH-RISK STUDENTS AND EMPLOYEES

Students who are at an increased risk of adverse outcomes from COVID-19—due to underlying medical conditions such as immunocompromised states, chronic medical conditions such as cardiac and lung disorders, and who are medically complex—should discuss a return to campus plan with their medical provider. Similarly, SHS employees who meet the above criteria should discuss their roles with both their medical provider and Human Resources. With appropriate advice, individualized plans and accommodations can be made in collaboration with the student or employee. Public health guidance should be followed to mitigate risks in situations where children and at-risk siblings or older adults reside within the same home.



SUSPECTED COVID-19 ILLNESS PROTOCOL

Protocols will be in place to ensure the local public health unit will be notified of any suspected case of COVID-19 at the school. SHS will work with the local public health unit to identify close contacts and will follow recommendations regarding next steps around communication, closures, additional testing, self-isolation, and cleaning.

- SHS will notify parents/caregivers/guardians if their child begins to show symptoms of COVID-19 while at school, and families will be expected to plan for immediate pick-up by a family member or caregiver.
- If a student is feeling unwell and has a temperature of 37.8C or higher will be kept under observation in an isolation room. The child's parent(s)/guardian(s) will be called to pick up the student.
- Parent(s)/guardian(s) must be reachable and have a plan for picking up their ill child at all times.



STUDENTS WITH COVID-19 SYMPTOMS

When a student begins to experience symptoms of COVID-19 while attending school, they will be immediately separated from others and placed in the Isolation Room, where they will be cared for by the school's nurse, until they can be picked up.

[COVID-19 Decision Tool for School Students \(July 15\)](#)



ISOLATION ROOM

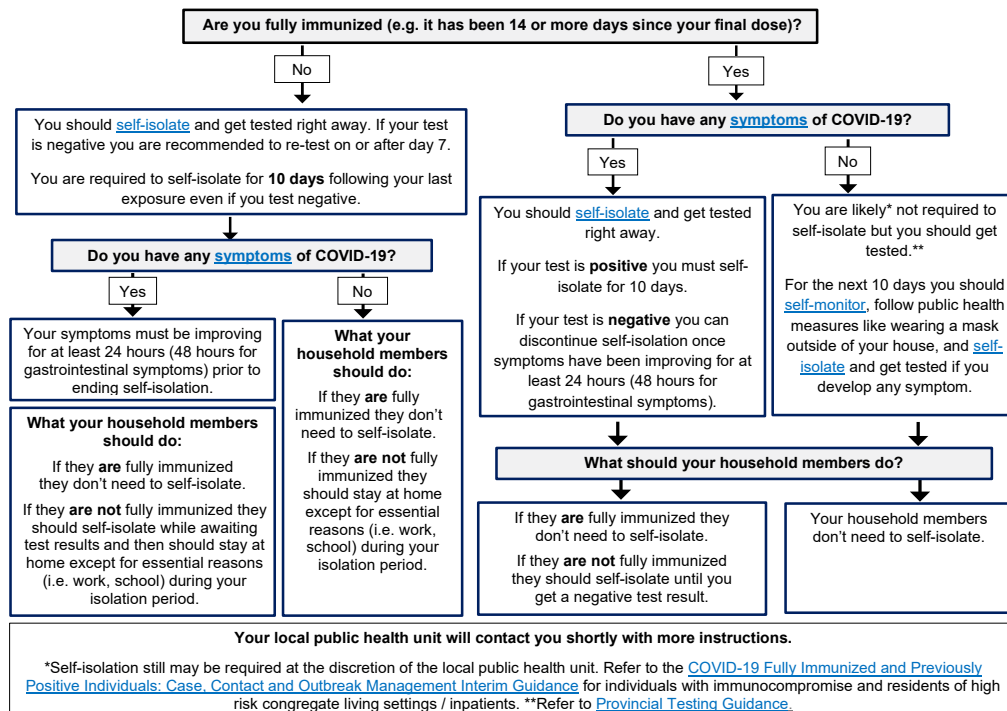
- Parents must have a plan for picking up their child(ren) at all times.
- An Isolation Room has been created for any staff or student who becomes ill with COVID-19 symptoms while at the school.
- A person in an isolation room will be cared for by the school nurse, or designated administrator.
- Parents must pick up their child(ren) within 30-45 minutes of being contacted. Any student who is sick will remain in the Isolation Room until they are picked up. Students are not allowed to wait in the Isolation Room until the school day is finished. If parents cannot be contacted after 2 attempts, emergency contact will be contacted.
- Parents/emergency contacts will be expected to collect the child by car in order to avoid possible spread on public transport.
- Parents will wait in their car outside the main entrance. They are not allowed inside the school. The student will be brought to his parent/guardian outside.

The Isolation Room will be equipped with kits that include all the required PPE to ensure the individual with symptoms does not spread the virus, and to protect staff.

While subject to change and additional guidance from Toronto Public Health, generally the following diagram provides the snapshot of the process for individuals that have been in contact with a confirmed case. Please remember, that any Public Health directions will supersede any documentation.



You've been exposed to someone who has tested positive for COVID-19, now what?





TESTING AND TRACING

- For testing and contact tracing, SHS will follow the guidelines provided by Toronto Public Health and the Ministry of Health.
- SHS will consult with the local Public Health Unit for guidance on steps to take where an individual tests positive for COVID-19.
- SHS will maintain up-to-date contact lists, campus attendance, including support staff and essential visitors for the purpose of contact tracing.
- The Ministry of Health and Toronto Public Health is responsible for the guidelines and protocols in the event of a positive COVID-19 test, or symptomatic individuals within the SHS community; SHS will follow guidelines regarding sharing of personal health information, contact tracing, communication with any potentially exposed individuals and any further actions as directed by Toronto Public Health.
- SHS will comply with public health guidelines and communication regarding quarantine regulations and potential partial or full school campus closure.



RECORD KEEPING

- Teachers will maintain attendance records for all students, whether they are participating remotely or on-campus.
- SHS will keep daily records of everyone who enters the building for the purpose of contact tracing in the event of a confirmed COVID-19 case or outbreak, which includes their name, contact information, time of arrival/ departure, screening completion.
- Maintenance staff, contractors and vendors who need to enter the building will also complete a COVID-19 assessment, provide contact details and have a record logged for their arrival and departure.

ENHANCED SCHOOL CLEANING



ROUTINES AND EXPECTATIONS

1. SHS will continue the regular cleaning and disinfecting of high-touch spaces and surfaces (e.g. classrooms; washrooms, light switches, desks/tabletops etc.)
2. All classrooms and office/working spaces will be equipped with government approved disinfectants and paper towels, as well as lid-free, lined garbage bins to facilitate cleaning routines as needed.



HAND HYGIENE AND RESPIRATORY ETIQUETTE

- Hand hygiene refers to hand-washing or hand-sanitizing to remove or kill viruses and any other bacterial particles, and is the most effective way to reduce the transmission of organisms.
- Respiratory etiquette aims to reduce the risk of transmitting droplets that may contain the virus.
- Reinforcement at home of coughing/sneezing into one's elbow etiquette will align with school training and messaging, and keep everyone safer.



HAND HYGIENE

- All classrooms will have sinks or alcohol based hand rub.
- Regular training and retraining of students and staff will occur.
- A handwashing video is available on the Health & Safety page of our website detailing the 7 steps of handwashing in accordance with Public Health Ontario. We thank SHS families for ensuring their sons are familiar with these steps before school opens.
- Students and staff will be washing hands on entry to school/classroom, before and after lunch and each recess and often throughout the day.
- Staff and students will have the supplies they need throughout the school to conduct appropriate hand hygiene and respiratory etiquette.
- Anyone entering the school must conduct thorough hand hygiene.
- Teachers will ensure students wash and disinfect their hands whenever they enter and leave the room.



PROPER DISPOSAL OF TISSUES

- Tissues will be available throughout the building to ensure proper respiratory hygiene and signs will show how to properly dispose of tissues.
- Hands-free (lidless) garbage disposal bins will be available throughout the school to ensure safe disposal of tissues, disposable gloves and masks, and other PPE items.

COMING TO SCHOOL HEALTHY EVERYDAY



DAILY SCREENING

Parents play a critical role in daily health screening at home and creating a culture of self-monitoring. Parents must not bring students to campus if there is even the slightest suspicion of COVID-19, or direct contact with someone confirmed to have COVID-19. One of the most important mitigation efforts for keeping COVID-19 out of the school is to complete and adhere to instructions as part of the daily Sterling Safe Screening.

The Sterling Safe Screening form will be automatically updated with the latest public health screening guidance throughout the school year and we will notify families of any updates. Prior to the start of the school year instructions with a link to the Sterling Safe Screening form will be emailed to all families.

1. Monitor for symptoms and complete the daily Sterling Safe Screening.
2. Families need to complete the Sterling Safe Screening form by 7:30am.
3. Students for whom this screening form has been completed with a 'negative' result will be welcomed onto school property.
4. Students and staff should be well enough to attend school without any medication administered prior to arrival.
5. Students should be able to fully participate in all daily activities.

The current Ministry of Health and Ministry of Education screening questions are shared for reference. Our Sterling Safe Screening form will be updated with the most recent screening questions prior to the start of school: [COVID-19 Screening Tool for Students \(Aug 11 from May 31\)](#)



ARRIVAL

As a community, meeting our arrival at school guidelines will ensure a safe and smooth start to each day.

We request that all parents and guardians wear a mask during drop off while on or around the campus.

1. All students can be dropped off at school between 8:00 and 8:30am. Students should be in homerooms by 8:30am. Note, all students will be entering through our field gates rather than the front entrance.

Please enter through the following field gates:

8:00am JK, SK, GRADES 1 & 2 SHS Drive field gate	8:00am GRADES 6, 7 & 8 Paul David field gate	8:00am GRADES 3, 4 & 5 SHS Drive field gate or Paul David field gate
--	--	---

**Siblings may be dropped off and picked up together at the youngest child's gate

2. Students will be greeted at the gate, checked to ensure Symptom Screening has been completed, is negative and will make their way into the school, going directly to their homerooms. Students will clean their hands at a wash station upon entering the school.

3. Students will maintain 2m distancing while traveling through school or on school grounds. We have applied markings on campus and in corridors in 2m intervals to assist distance estimates.

Students who are arriving late to school must enter at the SHS Drive main entrance, where their Symptom Screening will be checked. Parents of students who are late, or who are returning from absence should send a note of explanation by email to admin@sterlinghall.com rather than a handwritten note. Students will go directly to their homeroom after signing in, with help from SHS staff when necessary.

WHILE AT SCHOOL



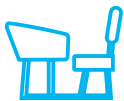
ACADEMIC SUCCESS TEAM & STUDENT WELL-BEING

To support the learning program at Sterling Hall, we have the Academic Success Team (AST) department to bolster each boy's learning. This department aligns with our mission to inspire and empower each boy, and facilitates this by assisting all faculty in supporting the social, emotional and academic goals and needs of students. All teachers and AST recognize individual strengths and challenges, and provide flexible learning opportunities and environments. Faculty and AST will work together to assess and support students who may require extra assistance with pandemic-related learning lags or required extensions. Our teachers, nurse and AST will work in partnership to support any social-emotional stresses incurred during the past months of the pandemic.



COHORTS

1. JK-Grade 8 may play or work indoors in closer proximity with class cohort members. Teachers will reinforce hand and respiratory hygiene practices.
2. Outside, class cohorts within each grade can play together after washing hands, understanding that care needs to be taken to observe distancing expectations.
3. During periods of high community infection rates, masks may be required during outdoor play for students who are remaining in close proximity to others.



CLASSROOMS

1. Our small class sizes will be maintained with class cohorts between 15-20 students.
2. Each room has been carefully measured to allow for a 1.5m radius between student workspaces.
3. Travel routes between classrooms and common areas will be clearly marked, with travel protocols practiced and reinforced.
4. Each student will have their own dedicated desk and workspace.
5. Students will remain in the homeroom throughout the day or specialty classrooms,

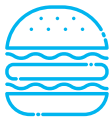
having access to designated washrooms and outdoors at regular intervals.

6. Students will eat lunch in their classroom with their homeroom teacher. Families have the option of signing up for the hot meal program.



PERSONAL BELONGINGS

1. Students and staff may only bring the essentials to school.
2. All personal belongings should be clearly labelled with the student or staff member's name. All personal items including outerwear, lunch bags and knapsacks will be kept in the student's designated area.
3. Staff will also have assigned desks and spaces for their personal belongings.



SNACKS AND LUNCHES

1. Each student should bring a clearly marked water bottle to school each day.
2. Students can bring snacks to eat at recess.
3. Lunches can also be brought from home.
4. All food must be nut-free. A microwave will not be available for use. In keeping with our school values, we ask that as much as possible food from home be nutritious and packed in reusable well marked containers.
5. Hot lunches, purchased through the meal program, will be delivered to classrooms at lunch time.
6. All students are expected to help the teacher clean and maintain the classroom learning space at the end of snacks and meals.



UNIFORMS

SHS students can wear their SHS gym uniforms in September 2021 in order to simplify life for boys and families; it is important that all clothing may be easily and regularly washed. We also want to give our boys many opportunities in the day for outdoor activity and exercise, while ensuring their comfort and limiting the challenges associated with required clothing changes.

Online shopping is available for all students, the Uniform 2021-22 Essentials Checklist can be found on the [Shark Shop Online Store](#) and uniform items may be purchased.

Grade 8 students will need to have a set of #1 Uniform items available for use at times throughout the school year for photos, interviews, assembly work and other activities as required.

For inquiries please contact, Jennifer Marks, Shark Shop Manager at sharkshop@sterlinghall.com.



DISMISSAL & PICK UP

Dismissal for students is 3:30pm. Dismissal routines are based on homeroom location. It is essential that students are picked up no later than 3:55pm.

We request that all parents and guardians wear a mask during pick up while on or around the campus.

1. Parents or guardians of JK - Grade 2 can pick their son up at the SHS Drive field gate.
2. Parents or guardians of Grade 3, Grade 4 and Grade 5 can pick up their son at the Paul David field gate.
3. Grades 6-8, supervised by their teachers, will wait for pick-up on the north side of the property near Cartwright Avenue. The Cartwright Loop will be closed to vehicles to increase pedestrian safety and allow for physical distancing. Alternatively, parents of Grade 7-8 students can sign a self-dismissal form and meet their son off-campus.

Parents or guardians of students involved in after school co-curriculars or athletic teams can pick up their sons at the SHS Drive field gate.



BEFORE & AFTER CARE

The After 4 Program will be offered with amendments.

To maintain grade cohorting and for planning purposes, the school will offer two sign up periods per term; the first for families who intend to attend the majority of the term, and the second after clubs and teams are published to allow families to augment child care depending upon siblings' extracurricular schedule.

1. All students are in care of Homeroom teachers from 3:30-4:00pm as they await pick up.
2. The After 4 Program will be available Monday through Friday from 4:00-5:45pm. (There are days throughout the school year when the After 4 Program will not be offered and pick-up at dismissal time will be required, these days will be noted on the SHS Online calendar).
3. An email will be sent when the sign up forms are available on the Parent Portal.
4. The charge for the After 4 Program is \$15/day.
5. Students must be picked up by 5:45pm.
6. The amended After 4 program will require students to sit in Grade groupings with masks on. Students can read, play seated games, or study.
7. Indoors, there needs to be 2m distancing between grade groupings. Given the restrictions on movement indoors, JK-Grade 1 families may not find the amended After 4 Program age-appropriate programming for their sons.

8. If outside during the After 4 Program, students can be unmasked with students of other grades, unless in close, consistent proximity to others. Otherwise, masks will be required.

If a student is enrolled in an after school activity (e.g. club, team, practice or game), the student will remain under the supervision of the coach/leader and parents can pick up at the SHS Drive field gate when activities are on campus.

The Early Morning Program (7-8am) will not be offered at this time but may be introduced later in the school year as daily screening and cohorting requirements are eased.

All students can be dropped off at school between 8:00 and 8:30am. Students should be in homerooms by 8:30am.

ACADEMIC PROGRAM

THE 2021-22 ACADEMIC YEAR OVERVIEW

At Sterling Hall, we specialize in education for boys during their formative years. We provide innovative and engaging programs that are geared to how boys learn, while providing a strong foundation in academics, arts and athletics. We equip students with the learning skills, work habits, academic and character strengths they need to succeed in their growth, learning and communities.

We are committed to maintaining the highest degree of excellence within our academic program while adapting our program to follow the most up-to-date public health guidance surrounding cohorts, physical distancing, regular hand hygiene, mask wearing indoors, among other mitigation strategies detailed above to reduce the transmission of COVID-19.

This year we will be operating on a 6 day cycle. In addition, we have planned,

1. Regular core subject instruction - literacy, math, science, social studies, French.
2. Cyclical classes in visual arts, drama, music and outdoor education.
3. Outdoor exercise and play breaks (3 per day in total), including HPE everyday.
4. Continued circle, social-emotional literacy, and health lessons each cycle.
5. Intermediate students will still have regular advisory, and Grade 8's regular leadership team meetings.
6. Student led personal projects JK - 8.
7. Personal computer and headset for each student.

HOMEROOM TEACHER & SCHOOL COMMUNICATION

Written and personal communication between the school and SHS families is a cornerstone of Sterling Hall's philosophy. At SHS, we continue to believe the Homeroom Teacher role is important to the sense of belonging each boy experiences. If a question or concern is general in nature, parents and boys will continue to reach out to their sons' homeroom teacher. Should a question be specific to a subject, parents and students continue to reach out to that subject teacher.

- In general parents should presume responses to emails and phone messages will occur within 24 hours during work days.

- During class time, teachers will be working with students and therefore are not available for emails or phone calls.
- Please understand that teachers may need to ask for an appointment or a phone call at other times of the day.
- If you need to communicate something of a more pressing nature please contact reception at 416-785-3410 or admin@sterlinghall.com who will directly you appropriately.

ASSESSMENT AND REPORTING

More than ever, students will learn most from small groups, one-on-one check ins and conferences so teachers can assess student achievement and coach next steps. Ongoing attendance and participation continue to be important.

We will still have our formal reporting times

OCT 21, 22	DEC 17	FEB 11	APR 7, 8	JUN 30
PARENT TEACHER CONFERENCES	DECEMBER REPORT CARD	STUDENT LED CONFERENCES	PARENT TEACHER CONFERENCES	FINAL REPORT CARD

TECHNOLOGY SUPPLIED

- SHS will be allocating students JK - Grade 8 with a dedicated device and charger.
- JK - Grade 1 will be allocated an iPad.
- Grades 2-8 will be allocated Chromebooks

SHS will also be allocating a headset (headphones with microphone) to every student. The device and the headset encompass all "hardware" needed for school. In the event a student needs to access the remote learning program they will also need access to reliable high-speed internet.

4

PHYSICAL & OUTDOOR EXPERIENCE

ATHLETICS

The safety and health of students, coaches, officials, and families will be at the forefront of all decisions about school athletics. Any Athletics that resume at SHS will be subject to the guidance of the Ontario Ministries of Education and Health, and local public health authorities, and Conference of Independent Schools Athletic Association (CISAA) which may change throughout the year. We will give advance notice to families should changes occur.

We are very hopeful that interschool athletics will return for some ages and sports. We await further guidelines from provincial and national sport bodies, and will communicate soon regarding what will be offered. For ages and sports that are not competing between schools, we will endeavour to offer intramural opportunities.

We will continue to offer regular PE classes for each class cohort indoors and outdoors.

TRIPS

We know experiential learning opportunities are much loved by our students. SHS will proceed carefully with the re-introduction of trips in an age-appropriate manner as safe and reasonable opportunities present themselves. Participation on trips may require additional information and actions with respect to COVID-19 safety. Community transmission rates and public health guidance will be assessed frequently prior to proceeding with trips. Field trips and experiential opportunities will focus on developing initiative and leadership, collaboration and cooperation, connection to the earth, responsible citizenship and environmental stewardship.

STUDENT LIFE

SHS will continue its robust Student Life Program. This year, we are looking forward to offering co-curriculars in-person, on-campus and digitally, when necessary, for grade cohorts. We look forward to continued House competitions and events throughout the year.

COMMUNITY EVENTS & MEETINGS

EVENTS

Parent involvement and our families' regular presence on campus is such an important part of the SHS experience and we very much look forward to welcoming parents and visitors inside the school when it is safe to do so.

Given the majority of our students (those under the age of 12) are currently unable to be COVID-19 vaccinated due to age restrictions, events and meetings traditionally held inside the school will be hosted virtually for the foreseeable future. We are in the process of reviewing health and safety protocols that may provide a few limited opportunities for parents or guardians to enter the school building when students will not be present.

Planning committees and the SHS Parent Association are working on alternate community-building events for the year including virtual initiatives and investigating opportunities for families to connect together safely outside with health and safety protocols in place. Updates and information about specific events will be distributed and our online calendar will be the main source of up-to-date information throughout the year.

ASSEMBLIES

Assemblies, a much loved aspect of our SHS community, will continue online via YouTube streaming on Friday morning at 9am. Students will watch with their classes at school and families are welcome to view at home or work.

ABOUT THE REOPENING PLANNING PROCESS

The Sterling Hall School (SHS) reopening planning process was guided by a logistics team made up of SHS Strategic Leadership Team members, our Board of Governors and faculty & staff. We thank staff, parents and friends of SHS who have provided input and feedback throughout our planning process.

We also followed recommendations with respect to evolving guidelines for school reopening from the:

- Law firm Borden Ladner Gervais (BLG)
- Conference of Independent Schools (CIS)
- Canadian Association of Independent Schools (CAIS)

This will continue to evolve with new information and any changes required or recommended by the Provincial Government or Toronto Public Health. SHS will update our Guide to Reopening as needed to be in line with new directives, and will inform parents, our community, and students that the plan has been updated.

RESOURCES

We are focused on continually fine-tuning our health and safety procedures and pandemic response planning as guided by the Province of Ontario, the Ministry of Health, and other agencies.

Please find a list of recent resources here:

[COVID-19: Health, safety & operational guidance for schools \(2021-2022\)](#)

[School-Operation-for-the-2021-2022-Academic-Year-in-the-Context-of-the-COVID-19-Pandemic](#)

CONTACT

Please direct any questions to: Jennifer Colleran, Vice-Principal at jcolleran@sterlinghall.com

WE WISH EVERYONE A
SAFE AND HAPPY RETURN TO SCHOOL,
AND LOOK FORWARD TO SEEING
YOU ON THE FIRST DAY OF SCHOOL,
SEPTEMBER 9, 2021!



STERLINGHALL.COM

