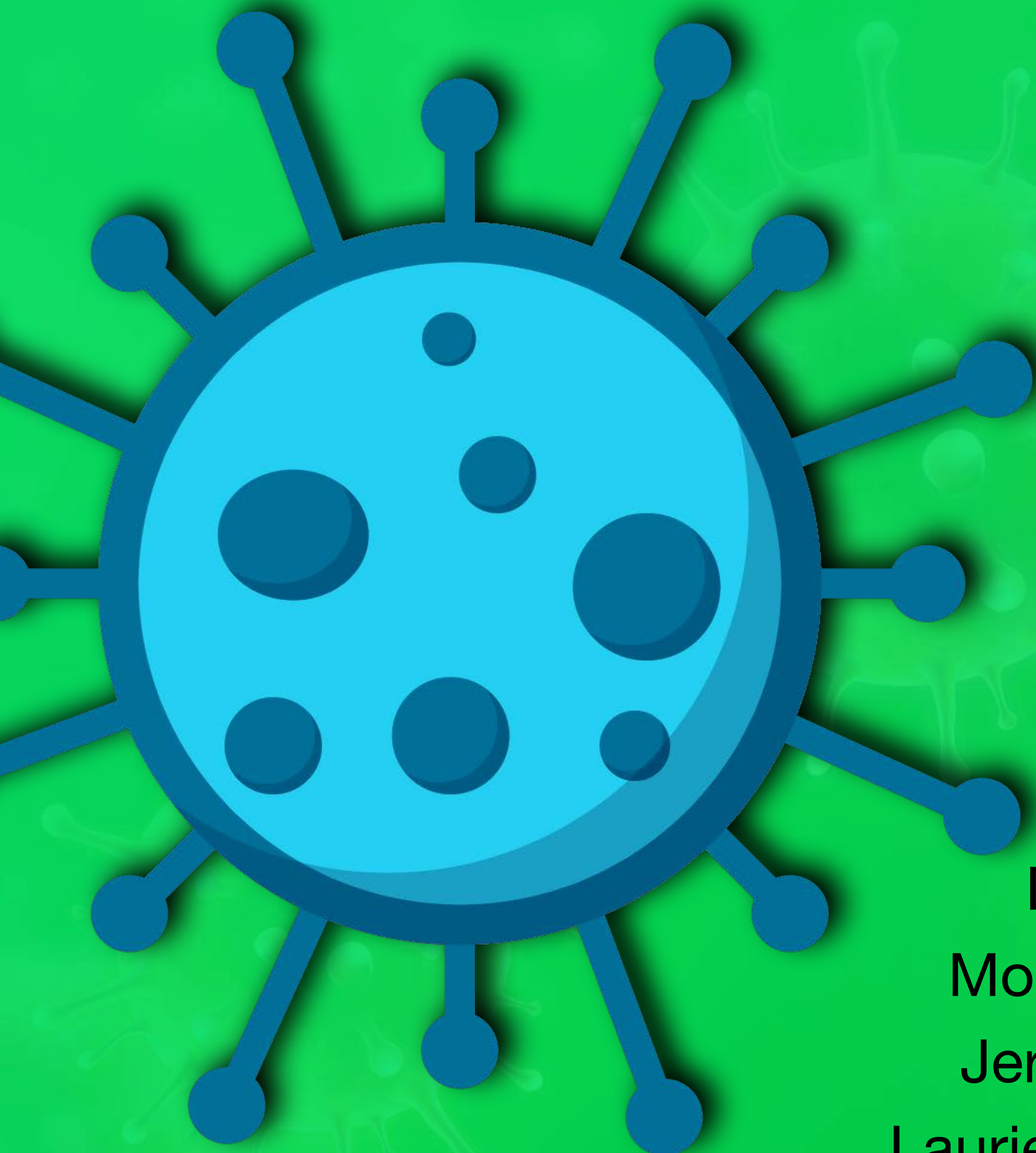


# COVID Protocols & Updates

August 24, 2021







# COVID Protocols & Updates

Dr. Tom Leonard, Superintendent  
Dr. Jeff Arnett, Deputy Superintendent  
Molly May, Chief Student Support Officer  
Jeremy Trimble, Chief Operations Officer  
Laurie Lee, Chief Human Resources Officer





# What a Difference a Year Makes

## Last Year

- State, Governor, TEA, City, County, APH, CDC all aligned
  - Masks
  - Quarantines
- Remote school funded
- Blended option allowed
  - No vaccinations until spring
  - Parent choice

## This Year

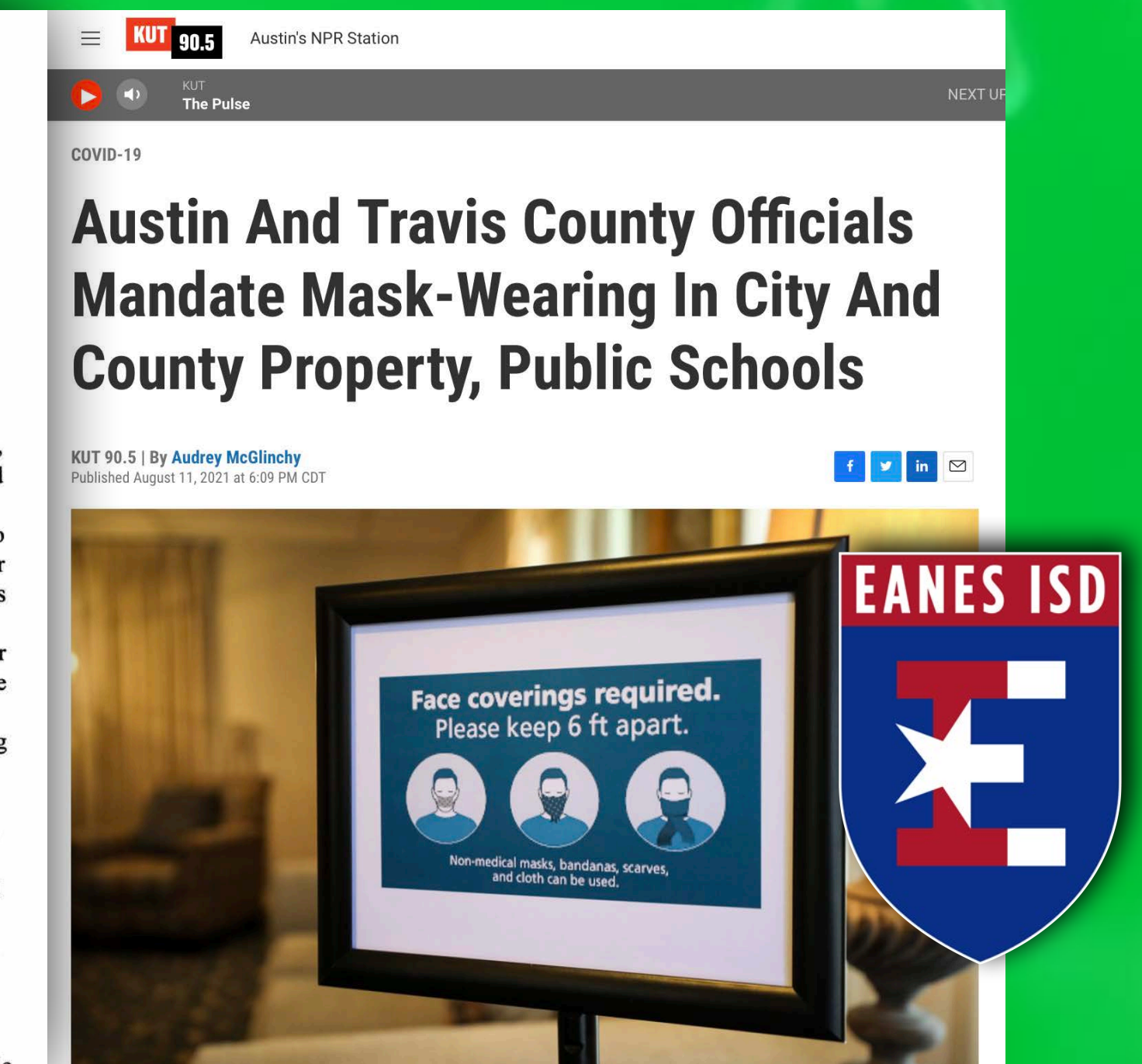
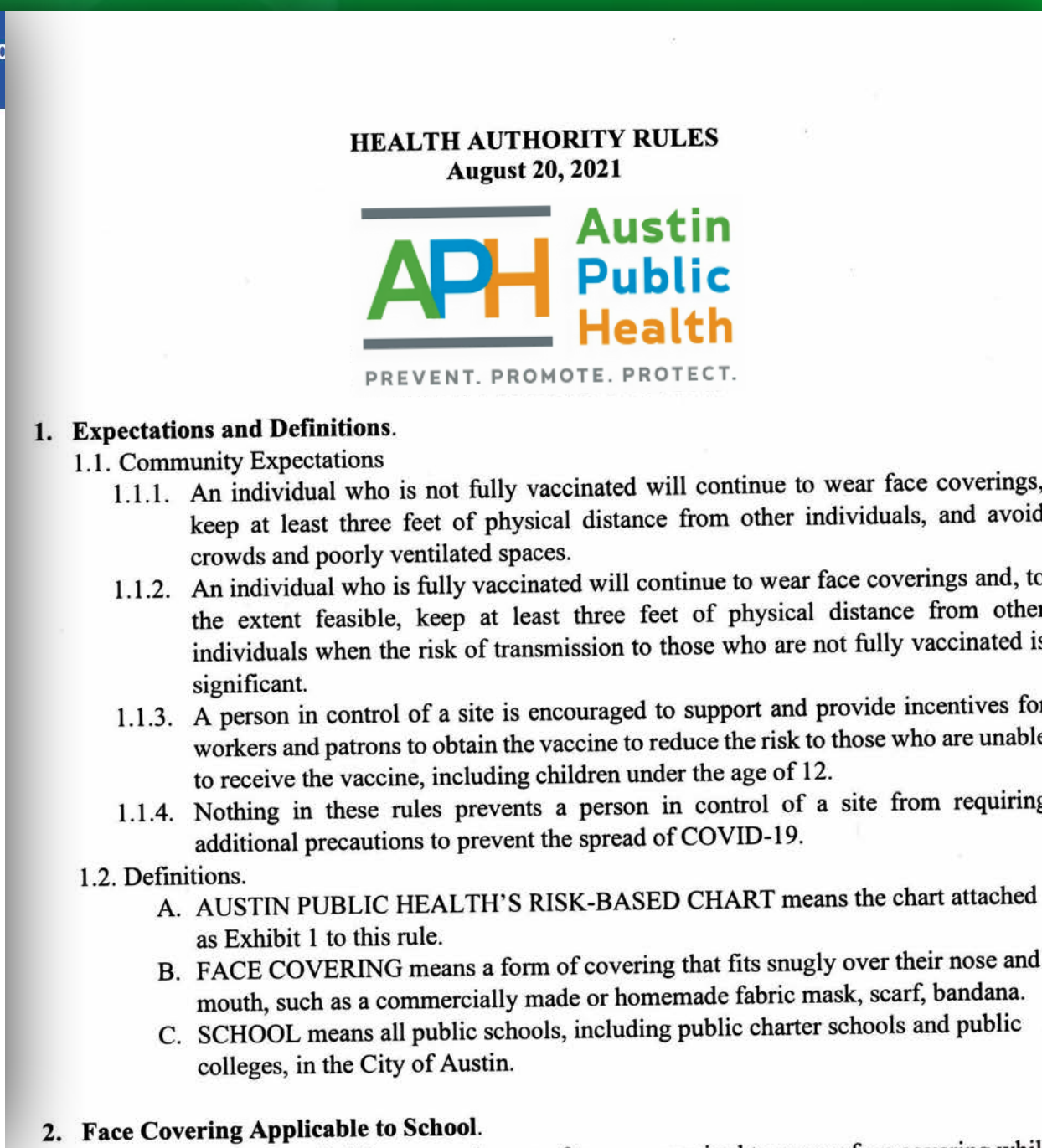
- Several government agencies debating in court which has authority
- Remote school NOT funded
- Blended option NOT allowed by TEA
- Many adults and teens now vaccinated





# Eanes ISD has always aligned with the law and the authority with regulatory control

- This year, that has changed multiple times
- Currently via TEA and the courts, Travis County has authority to determine what is required in schools





# Communication

## Monitoring Legal Changes 8.15.21

We are aware of the Texas Supreme Court’s decision today to temporarily block two Temporary Restraining Orders issued in other counties against the Governor’s mask order. As we stated in recent communication, we will endeavor to follow the law as it is determined by the highest court at the time in this seemingly endless legal chess match. We hope the legal issues will be resolved soon so we are able to provide the most up-to-date decision before the start of school. We will keep families posted as we are able.



Dear Parents, Guardians & Staff:

Since March 19, 2020, when the Governor ordered all schools in the State to go to 100% remote learning, Eanes ISD has always followed the law. We will continue to enforce what that current law requires.

On Friday afternoon, it was widely reported that the Texas Supreme Court had issued a Restraining Order to block Governor Abbott's Executive Order GA-38.

## Continuing to Monitor and Adjust Protocols

Late Thursday, we received a [statement from the Texas Education Agency \(TEA\)](#) that Gov. Abbott's Executive Order GA-38 - which prohibits local health authorities such as Austin Public Health and counties from requiring masks in schools - will not be enforced while ongoing litigation proceeds. In addition, late Thursday, we received a new [Travis County Order \(TCO\)](#) and [Emergency Austin Public Health \(APH\) rules](#) affecting schools issued on Aug. 17. Also on Thursday, the Texas Supreme Court upheld three Temporary Restraining Orders allowing local mask rules to prevail over Gov. Abbott's Order.

**At the present time per TEA, Travis County and APH have the authority to require masks and other COVID protocols in schools while litigation proceeds. The new Travis County Order specifically states school districts must now require masks in school, with administrative discretion allowed for not requiring masks during outdoor activities, physical education, extracurriculars, children with special needs and while eating/drinking.**

With regard to students, who have a legal right to attend school, the administration believes it is important to seek input from the Trustees on how best to enforce masks in schools, which is not defined or established



## A Fabulous First Day

Dear Parents, Guardians & Staff,

As a teacher, coach and administrator of the school district I have served for over 20 years, I can tell you there is no exception – it is always a fabulous first day.

There is always a first day.

This after visiting all the classrooms, offices, office staff...watching the students. There is always a first day.

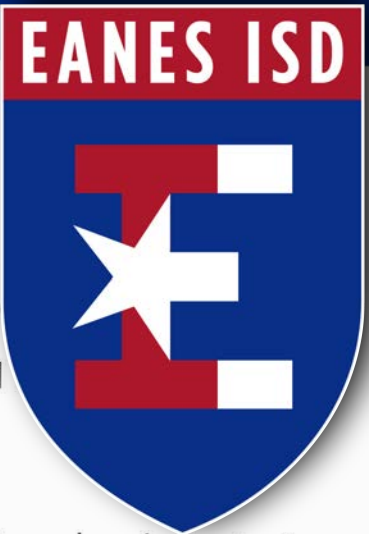


## Creating An Oasis For Our Students

Parents, Guardians & Staff,

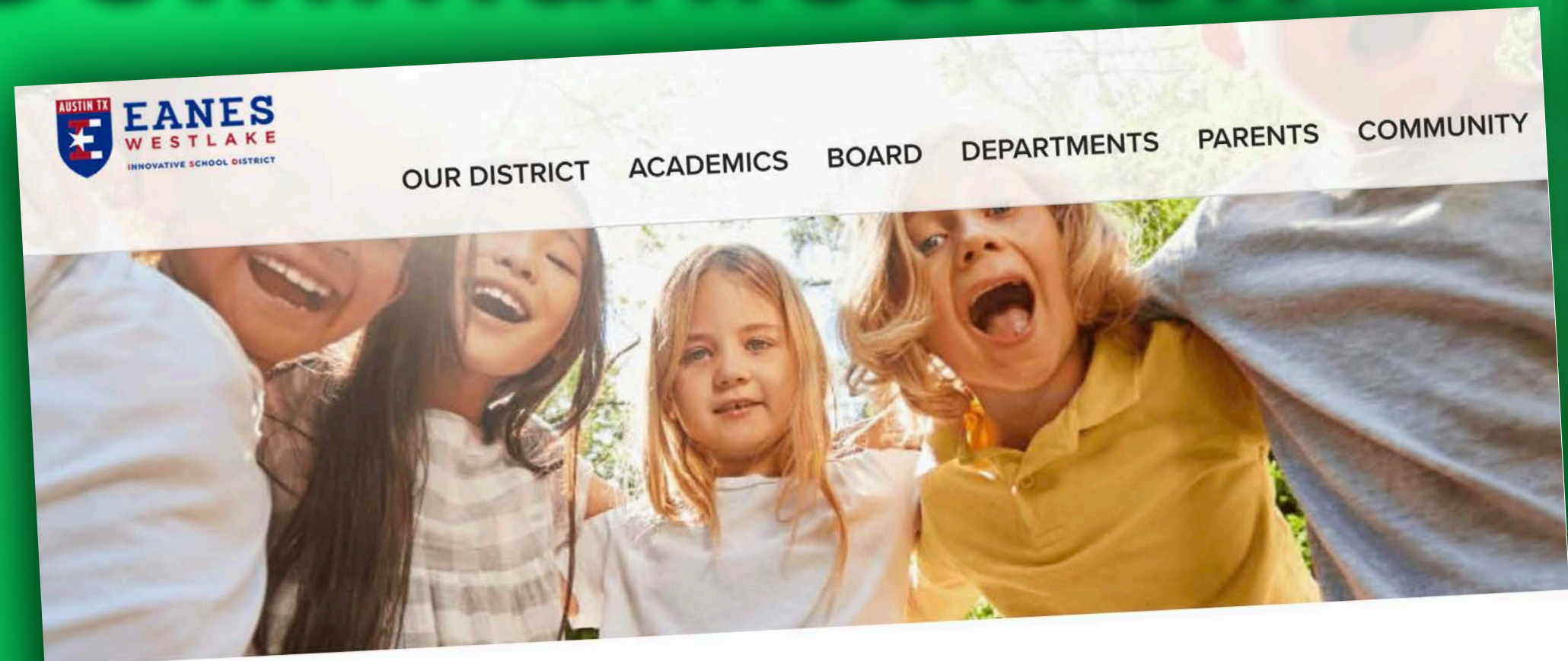
The last few days leading to the start of school have been a whirlwind of information from governors, attorneys general, judges, mayors, superintendents and even principals. We agree on the particulars (i.e., masks or no masks), we all want students to be safe and healthy and to learn. We will all do our best to support each other respectfully.

Campus principals report several “magical moments,” as children and parents return to school - including little ones, in masks - excited to see their friends and meet their teachers. Thank you to all the parents supporting our educators.





# Communication



## COVID Protocols 2021-22

As of August 3, 2021\*

\* we will continually update this website as conditions warrant

As we transition to a less restrictive learning environment with 100% capacities in our schools, Eanes ISD is committed to supporting our students and staff in their learning and working environments.

We are excited to welcome everyone back into our buildings. At this time, no remote learning options will be offered and face coverings will be optional, regardless of vaccination status. Currently, per [Gov. Greg Abbott's executive order](#), Eanes ISD cannot legally require masks and the State will not fund a remote learning option. Other districts receiving federal funds may offer a form of remote learning; however, we are unable to provide remote learning other than limited homebound instruction offered for significant medical conditions.

### Vaccinations

Per [Gov. Abbott's order](#), Eanes ISD cannot require students or staff to get vaccinated. At this time, the State of Texas has not added the COVID-19 vaccination to the required immunization list for students. Eanes ISD cannot require students or staff to report vaccination status.

### Reporting/Tracking

Working together to maintain a healthy school environment, we ask parents and employees to report confirmed positive cases of COVID-19 to the school district. Parents should report positive cases to the school nurse; employees should report to HR.

The District will not administer a COVID-19 Dashboard. Staff will not conduct close contact tracing. Parents and staff will not be required to quarantine for exposure. The District is still required, per CDC guidelines, to maintain physical distancing of 3 feet or more will take



OUR DISTRICT ACADEMICS

COVID > COVID-19 Dashboard

## COVID-19 Dashboard

Eanes ISD will update the COVID-19 dashboard to further transparency and share active, positive COVID-19 cases on our campuses. Notifications will be sent to individual classes/extracurriculars/buses when there is a confirmed positive case. We will update the dashboard for all campuses and the district daily, excluding weekends and holidays. Positive cases reported after 5pm will be reflected the following day.

A positive case indicates a staff member or student who was onsite in a district facility has tested positive for COVID-19. Per the CDC, those who test positive for COVID must isolate for 10 days from the date of the positive test. Once the individual is cleared to return, their case is removed from the dashboard.

### Employees



15

Positive Active Cases



1,155

Total Number of Employees

### Students



35

Positive Active Cases



8,028

Total Enrollment

As of 8/23/2021



OUR DISTRICT ACADEMICS BOARD

## FAQ

\*Most recent FAQ is at the top

### What can I expect when we return to school?

At all schools, we will:

- Support recommendations and guidance from state and federal agencies
- Operate in-person learning (Supported by CDC and AAP recommendations)
- Respect an individual's preference in mask wearing
- Continue cleaning & sanitizing protocols, including sanitization stations and deep cleaning classrooms/areas when there is a positive case
- Encourage frequent hand washing
- Provide bottle filling stations (no water fountains)
- Limit visitors
- Adjusted elementary assemblies
- Offer Personal Protective Equipment (PPE) such as masks and face shields
- Promote physical distancing of three feet or more when feasible
- Offer classroom plexiglass to staff/parents who request it (with the exception of specials, cafeteria).

### Will vaccines be required for students or staff?

Per Gov. Abbott's order, Eanes ISD cannot require students or staff to get vaccinated. At this time, the State of Texas has not added the COVID-19 vaccination to the required immunization list for students. Eanes ISD cannot require students or staff to report vaccination status.

Texas law does not allow us to require COVID vaccinations for students, particularly since the law is classified as Emergency Use Authorization (EUA).

In Executive Order GA-35, Governor Abbott prohibits political subdivisions from requiring proof of vaccination in order to obtain a service or enter any location. The Order has been uniformly interpreted by Texas school districts and attorneys as prohibiting districts (as political subdivisions) from requiring proof of vaccination as a condition of employment.

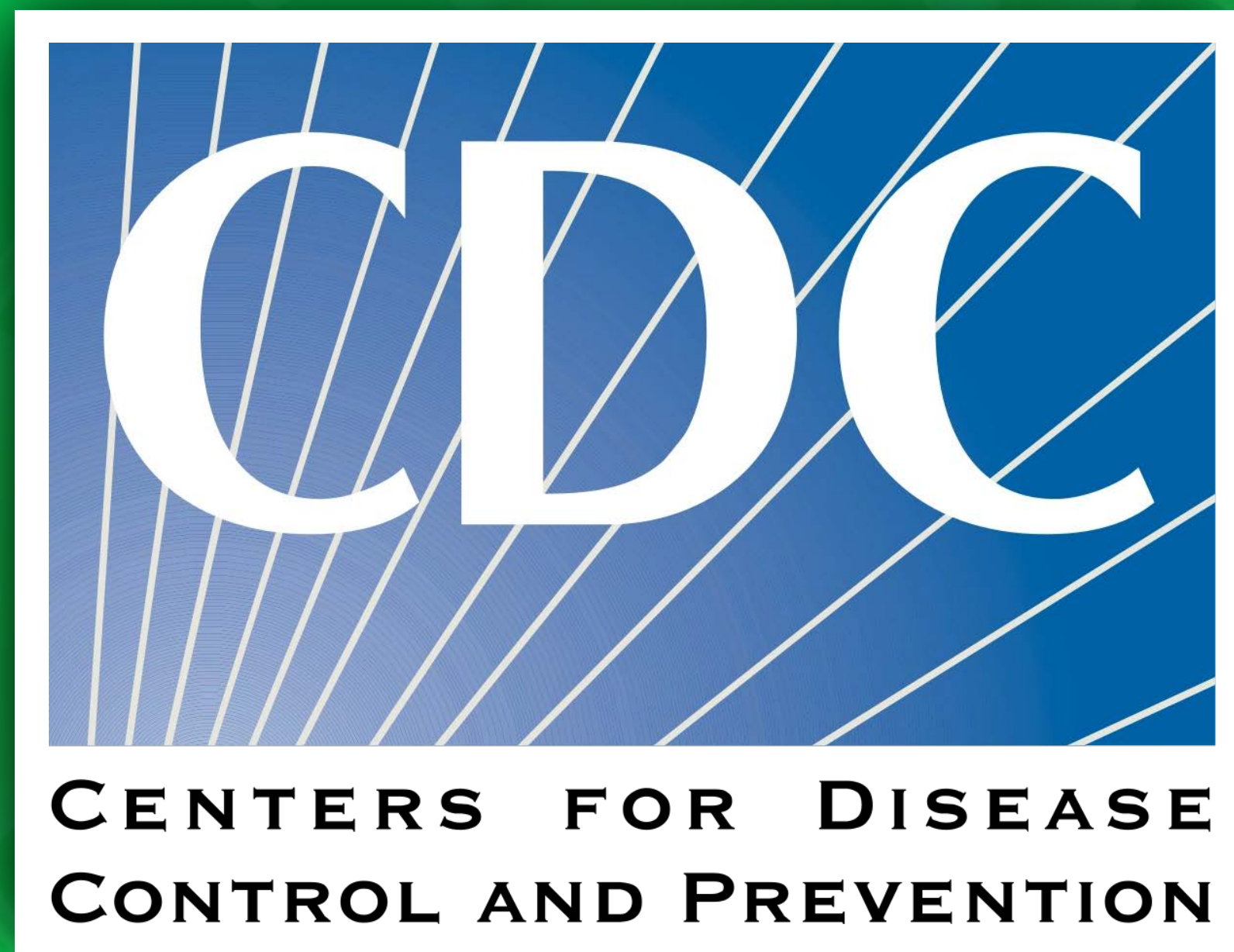
[www.eanesisd.net/COVID](http://www.eanesisd.net/COVID)





# Firmly Committed to In-Person Learning

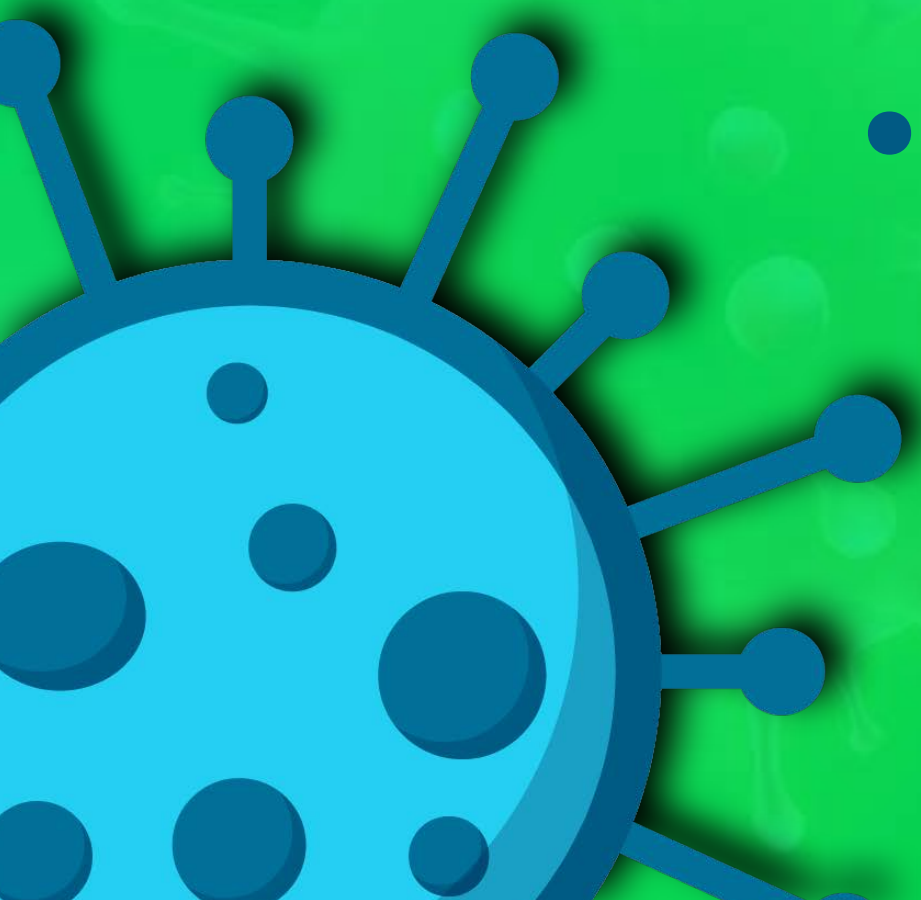
Both the Centers for Disease Control and Austin Public Health FIRMLY recommend in-person learning for students, despite the pandemic





# In-Person Attendance and Enrollment

- The school district's anticipated enrollment had risen to just under 8,100 students one week before school started
- After the first three days of school, approximately 200 pre-enrolled students had still not attended classes in-person - roughly 2% of total enrollment
- Students are not officially enrolled until they attend in-person
  - Teachers will work with absent (or quarantined) students to makeup missed work in a manner consistent with all other illnesses and absences, according to the Student Handbook





# Safety Protocols

- Plexiglass dividers are available for elementary student homeroom desks upon parent request processed thru campus
- Disposable masks are available if a staff member, student or visitor forgets their own personal mask
- Assigned seats on buses are established once ridership balances out after the first two weeks of school
- Stringent campus cleaning and air quality controls are maintained, continuing practices implemented during the 2020-21 school year





# Recent COVID Mitigation Strategies

- Campus visitors are significantly limited to only appointments for the foreseeable future
- Back-to-school nights for secondary schools will be virtual; elementary grade-level orientations will be limited to smaller, contained audiences this week
- Student assemblies will be paused until after Labor Day or until conditions subside





# Student Services & Human Resources

## Eanes ISD COVID Vaccination Clinic

Eanes ISD is continuing relationships with partners to provide future vaccinations clinic opportunities

- Gathering interest from Staff and Community for first dose vaccinations

Third Dose Booster:

- Walk-in clinics available at APH
  - APH is considering larger vaccination venues similar to last year





# Student Services & Human Resources

## Eanes ISD COVID Testing Clinic

Total Number of Tests provided to Staff and Students : ~1800 since testing began in the spring

TEA Requirements - For Staff who meet the close contact threshold with a COVID-19 positive individual, if these staff continue to work on campus, rapid testing must be performed at the start of the day, at least once every other day until the end of day 10.

(TEA Public Health Guidance, Aug. 19, 2021)

Continuing to provide Testing Clinics:  
Hire Testing Coordinator





# Human Resources

## Proposed Paid COVID Leave Benefits for Employees

Retroactive to July 1, 2021 through the end of the 2021-22 fiscal year, Eanes ISD administration recommends providing additional paid COVID-19 leave for all regular employees

The employee will be provided 10 additional paid leave days, one time during the 2021-2022 school year under the following conditions:

- The employee is identified as having a lab-confirmed positive test for COVID-19
  - The employee is unable to work due to documented quarantine closure pursuant to Federal, State, or local government order or school district decision. Specifically district closure of EISD classroom, school or facility not a self-quarantine





# Human Resources

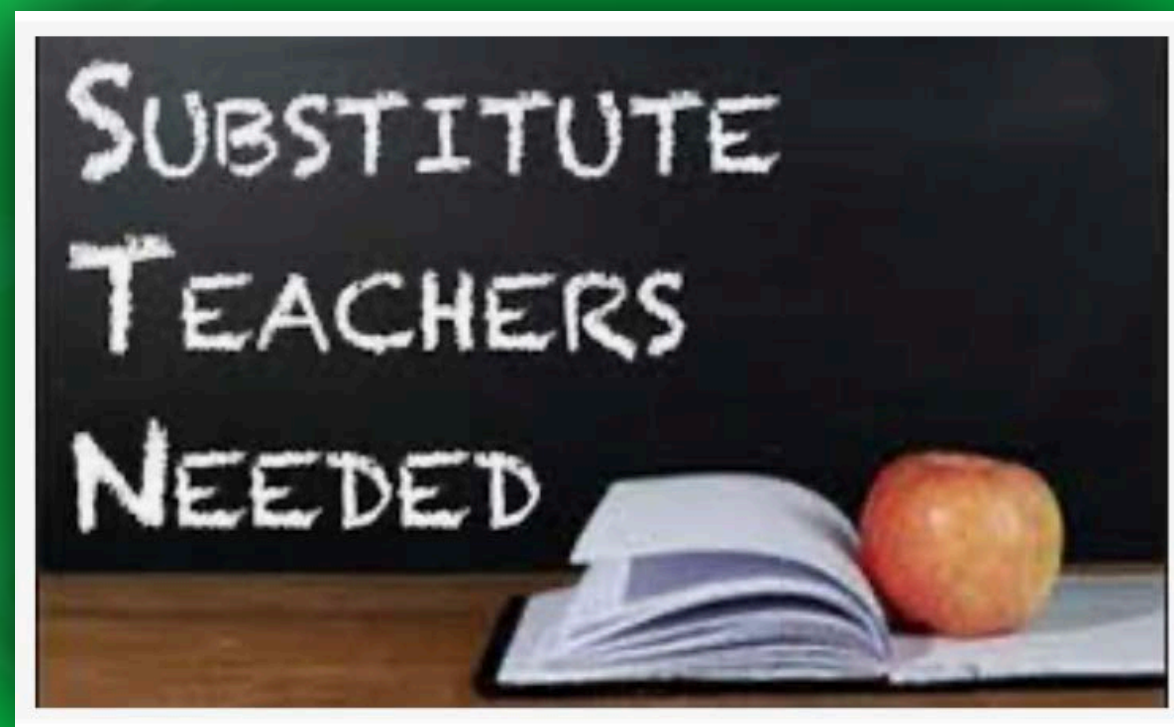
## Staffing and Substitute Update

Total Number of Professional Teaching Vacancies **4**

Total Number of Professional Vacancies **4**

Total Number of Teaching Assistant Vacancies **13**

Active Substitute Pool Total **215**



**Nationwide teacher shortage expected to stretch into fall: "The pandemic was certainly perhaps the last straw"**

<https://www.indeed.com/q-Bus-Driver-jobs>

[Bus Driver Jobs, Employment | Indeed.com](#)

6033 Bus Driver jobs available on Indeed.com. Apply to Bus Driver





# Student Services: Contact Tracing/Quarantine

- Elementary: Notifications to grade level, specific homeroom and bus
- Secondary: Individual classes, bus, extra-curricular
- Close Contacts: Not required to quarantine (per TEA)
- Definition has evolved:

Masking

Vaccination status

K-12 Exemption (CDC Aug. 5, 2021)





# Student Services: Contact Tracing/Quarantine

## Close Contacts:

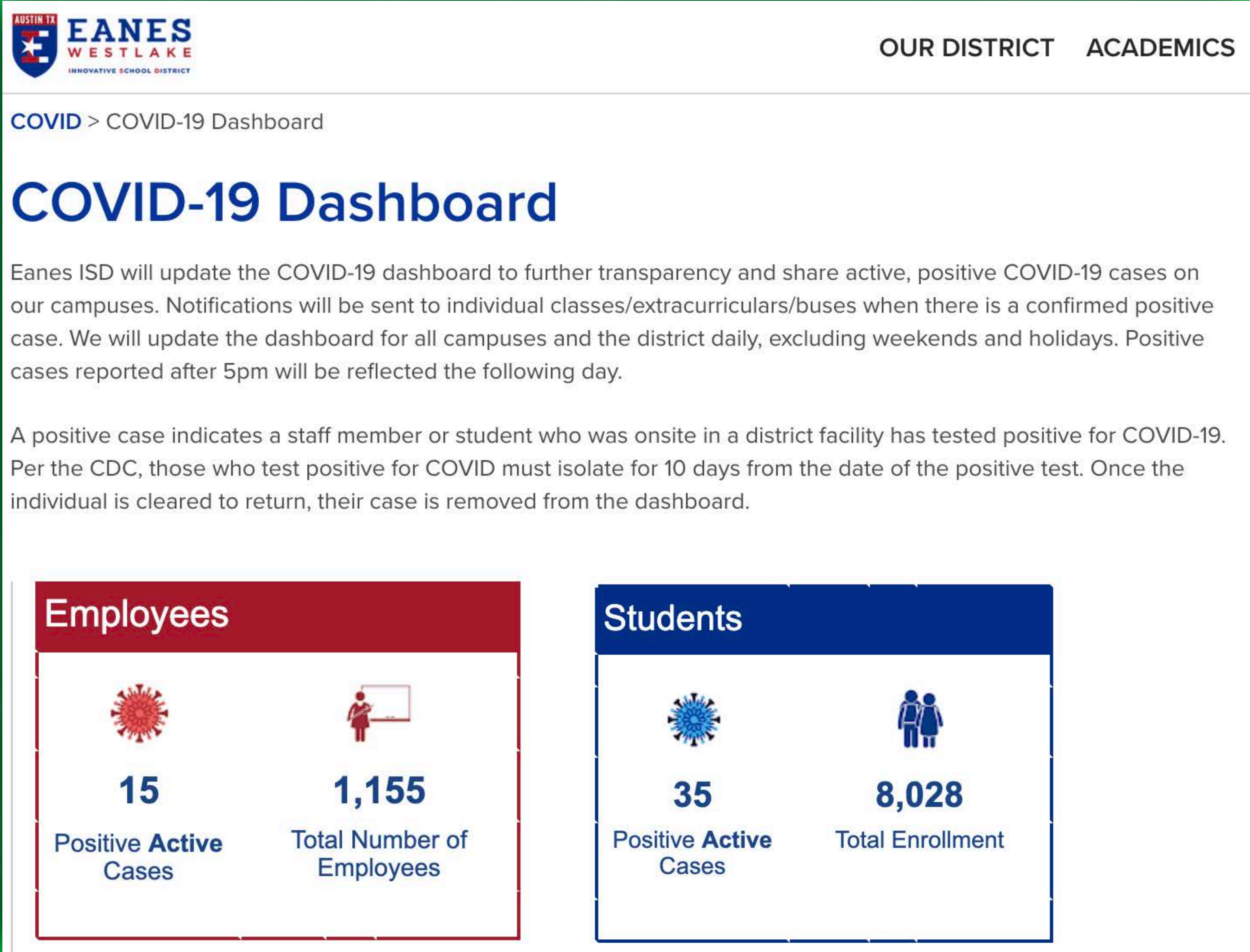


**Exception:** In the **K–12 indoor classroom** setting, the close contact definition excludes students who were within 3 to 6 feet of an infected student (laboratory-confirmed or a [clinically compatible illness](#)) if both the infected student and the exposed student(s) [correctly and consistently](#) wore well-fitting [masks](#) the entire time.





# Student Services: COVID-19 Dashboard





# Student Services: Nurses

- Part of each campus COVID/Contact tracing team
- Work with individual families to set return dates
- Coordinate with Matt Greer on District Dashboard and report information to Austin Public Health
- Continue to follow Texas Department of School Health Services guidelines about communicable diseases
- Communicate with district personnel around individual PPE needs of staff





# Student Services: Homebound

- Staff going into a student's home to provide homebound - no waiver required
- Any instruction that involves a remote component - waiver required for individual student
- Updated guidance from TEA around General Education Homebound - no concurrent instruction
- Currently awaiting on approval process for waivers already submitted
- Soliciting interest from teachers who are willing to provide homebound services

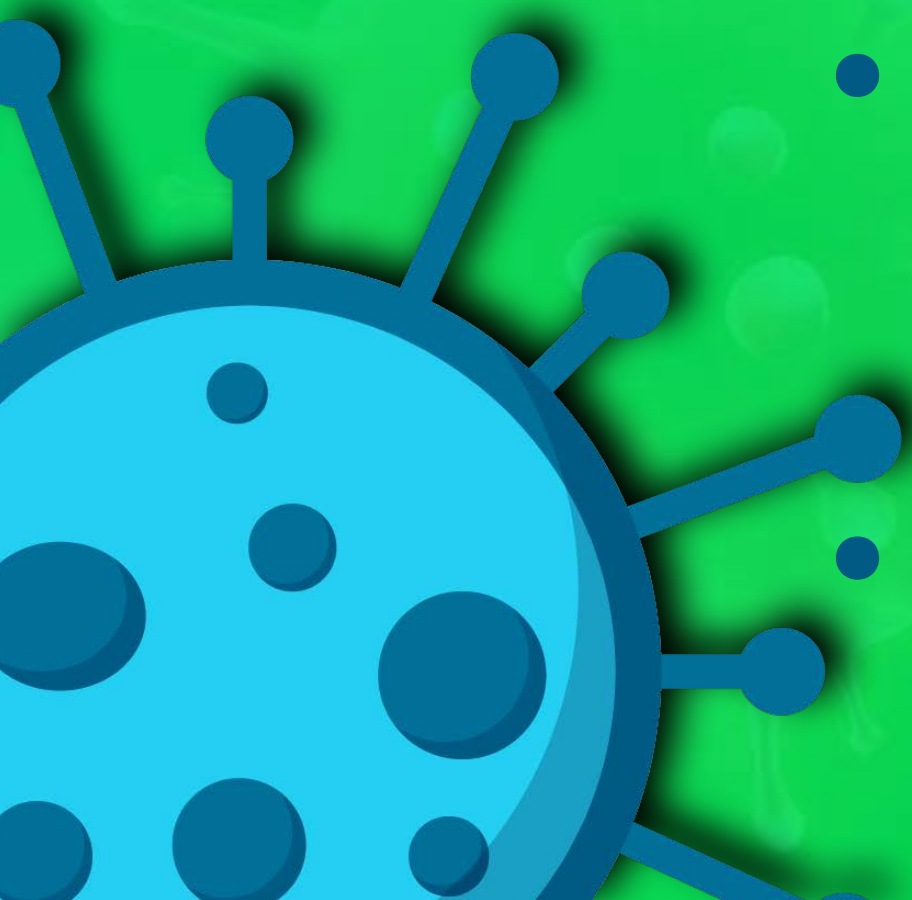




# Student Services: Remote Conferencing

Student in an off-campus location participating virtually

- Temporary medical condition; close contact
- K-5 (4 hrs - 2 must be synchronous)
- 6 - 12 (4 hrs - synchronous)
- Only available for 20 days (waiver process)
- Cannot be concurrent (teacher teaching in-person and remote at the same time)
- Teacher must be certified in content area





# Masks: Understanding the Urgency

**BREAKING: Public health officials recommend Leander ISD close for 10 days to stop spread of COVID-19**



John Graham, LISD's assistant superintendent of campus activities and support and who has been tasked with the district's response to the coronavirus, addressed trustees at Monday's school board meeting.

LEANDER ISD'S LIVE STREAM

Posted Tuesday, August 24, 2021 9:45 am

**Richard Stone | Editor at Large**

While Leander ISD trustees heard more than two hours of public comment during a special meeting Monday night, county public health officials privately warned district personnel that the level of COVID-19 infections "is unsustainable for a school district and for the surrounding county."

In an email, obtained by the *Hill Country News*, Dr. Amanda Norwood, medical director for the Williamson County and Cities Health District, told LISD Superintendent Dr. Bruce Gearing that the WCCHD has "grown increasingly concerned with the amount of cases and the amount of rapid spread throughout LISD as a district this past week."





# Masks: Enforcement Question



## *Masks*

Please note, mask provisions of GA-38 are not being enforced as the result of ongoing litigation. Further guidance will be made available after the court issues are resolved.

## Public Health Guidance

August 19, 2021

The guidance in this document is authorized by Executive Order GA-38, which has the effect of state law under Section 418.012 of the Texas Government Code. Executive Order GA-38 provides TEA with the legal authority to publish requirements for the operation of public school systems during the COVID-19 pandemic. This document takes effect immediately, replacing all prior guidance. TEA recommends that public school systems consult with their local public health authorities and local legal counsel before making final decisions regarding the implementation of this guidance. This guidance is subject to change as new information becomes available.

Guidance addresses:

On-campus instruction

Non-UIL extracurricular sports and activities

Other activities that students must complete

For matters related to school system staff, please refer [here](#).





# Masks: Enforcement Question

**RESOLUTION AND ORDER OF THE TRAVIS COUNTY COMMISSIONERS COURT  
MANDATING COMPLIANCE WITH LOCAL HEALTH AUTHORITY ORDERS AND  
ADOPTING CRITERIA FOR DECLARING A PUBLIC HEALTH NUISANCE**

STATE OF TEXAS  
COUNTY OF TRAVIS

§  
§  
§

12 pgs 2021184887

**RECITALS AND FINDINGS**

1. On March 6, 2020, a Declaration of Local Disaster was issued by the Travis County Judge to allow the County of Travis, Texas ("County" or "Travis County") to take measures to reduce the possibility of exposure to COVID-19 and promote the health and safety of Travis County residents; and

2. On March 13, 2020, a Declaration of State of Disaster was issued by Governor Greg Abbott to take additional steps to prepare for, respond to, and mitigate the spread of COVID-19 to protect the health and welfare of Texans; and

3. The virus that causes COVID-19 is contagious, especially in group settings; and

4. COVID-19 continues to menace the health of the community, as children younger than five years of age are particularly susceptible to the Delta variant, a highly transmissible and more contagious form of the virus. In addition, Dr. Desmar Walkes, the Austin-Travis County Health Commissioner, has advised that the virus has mutated and de-

replace any other County authority for abating public nuisances.

**SECTION 10. SAVINGS CLAUSE.** If any provision of this Order or its application to any person or circumstance is held to be invalid, then the remainder of the Order, including the application of such part or provision to other persons or circumstances, shall not be affected and shall continue in full force and effect. To this end, the provisions of this Order are severable.

**SECTION 11.** This Order incorporates by reference the following:

**Exhibit A:** Health Authority Rules and Order dated August 16, 2021.

ADOPTED AND APPROVED THIS 17 DAY OF August, 2021.

Andy Brown, Travis County Judge

Jessie W. Travillion  
Commissioner, Precinct One

Brigid Shea  
Commissioner, Precinct Two

Margaret J. Gomez  
Commissioner, Precinct Four

Ann Howard  
Commissioner, Precinct Three

**SECTION 5. PUBLIC HEALTH NUISANCE.** A School that does not comply with Minimum Health Standards described in this Order maintains a public health nuisance that is subject to abatement.

**SECTION 6. Community Expectations:**

A. An individual who is not fully vaccinated will continue to wear face coverings, keep at least three feet of physical distance from other individuals, and avoid crowds and poorly ventilated spaces.

B. An individual who is fully vaccinated will continue to wear face coverings and, to the extent feasible, keep at least three feet of physical distance from other individuals when the risk of transmission to those who are not fully vaccinated is significant.

C. A person in control of a site is encouraged to support and provide incentives for workers and patrons to get vaccinated to reduce the risk to those who are unable to receive the vaccine, including children under the age of 12.

D. Nothing in these rules prevents a person in control of a site from requiring additional precautions to prevent the spread of COVID-19.

**SECTION 7. MINIMUM STANDARDS.**

**Face Covering Applicable to School.**

A. Students, staff, and visitors over the age of two are required to wear a face covering while on school property or school buses during Stages 3, 4, and 5 as set forth in Austin Public Health's Risk-Based Chart. In this section, school means all public schools, including public charter schools in Travis County.

B. A principal, the responsible staff member, or administrator of the students may determine when it is not appropriate to require students, staff, and visitors to wear a face covering.

**SECTION 8. ENFORCEMENT.** This Order may be enforced as follows:

A. Through a civil suit filed in district court for injunctive relief that:  
(1) requires specific conduct necessary to abate the public health nuisance; and  
(2) prohibits specific conduct that constitutes a public health nuisance.

B. The Commissioners Court authorizes the County Attorney to file civil suits seeking the relief described in Subsection (A).

**SECTION 9. NON-EXCLUSIVITY.** The enforcement mechanisms provided for herein are not intended, nor shall they be construed, to limit in any way other remedies, causes of action, or rights provided for by law. The adoption of this Order does not restrict, limit, or

EANES ISD

**RESOLUTION AND ORDER OF THE TRAVIS COUNTY COMMISSIONERS COURT  
MANDATING COMPLIANCE WITH LOCAL HEALTH AUTHORITY ORDERS AND  
ADOPTING CRITERIA FOR DECLARING A PUBLIC HEALTH NUISANCE**

STATE OF TEXAS  
COUNTY OF TRAVIS

RECITALS AND FINDINGS

Whereas a Declaration of Local Disaster was issued by the Travis County Judge to  
the County or "Travis County") to take measures to reduce the  
the health and safety of Travis County

12 pgs 2021184887

**RECITALS AND FINDINGS**

d by the Travis County Judge to  
) to take measures to reduce the  
safety of Travis County



B. As the number of firms in the industry increases, the extent of the externality decreases. Explain why this is so when the number of firms is small and why this is not so when the number of firms is large.

an individual who is fully vaccinated. If not feasible, keep at least three feet apart to reduce the risk of transmission to those who

ed will continue to wear face coverings, maintain physical distance from others, and avoid crowded settings. The risk to those who are not fully vaccinated is significant.

erings and, to  
r individuals  
cant.

community authority for abating public nuisances.

Authority for abating public nuisances.

SECTION 11. This Order incorporates by reference the following:

SECTION 11. This Order incorporates by reference the Health Authority Rules and Order dated August 10, 2022.

SECTION 11. This Order incorporates by reference the rules and order dated August 18, 2021, as amended, of the Health Authority, which are hereby adopted as the rules and order of the Health Authority for the purpose of this Order.

ED THIS THE 11 DAY

*[Signature]*

Travis County Judge

Andy Brown

Wayne W. Travillion  
Commissioner, Precinct One

Brigid Shea  
Commissioner, Precinct Two

Margaret J. Gómez  
Commissioner, Precinct Four

**SECTION 5. PUBLIC HEALTH NUISANCE.** A School that does not comply with Minimum Health Standards described in this Order maintains a public health nuisance that is subject to abatement.

**SECTION 6. Community Expectations:**

A. An individual who is not fully vaccinated will continue to wear face coverings, keep at least three feet of physical distance from other individuals, and avoid crowds and poorly ventilated spaces.

B. An individual who is fully vaccinated will continue to wear face coverings and, to the extent feasible, keep at least three feet of physical distance from other individuals when the risk of transmission to those who are not fully vaccinated is significant.

C. A person in control of a site is encouraged to support and provide incentives for workers and patrons ~~to obtain the vaccine to limit the risk to those who are unable to receive the vaccine, including children under the age of 12.~~

3. Nothing in these rules prevents a person in control of a site from requiring additional precautions to prevent the spread of COVID-19.

## SECTION 7. MINIMUM STANDARDS

## SECTION 7. MINIMUM STANDARDS

A. Students, staff, and visitors over the age of two are required to wear a face covering while on school property or school buses during Stages 3, 4, and 5 as set forth in Austin Public Health's Risk-Based Chart. In this section, school means all public schools, including public charter schools in Travis County.

B. A principal, the responsible staff member, or administrator of the students may determine when it is not appropriate to require students, staff, and visitors to wear a face covering.

**SECTION 8. ENFORCEMENT.** This Order may be enforced as follows:

A. Through a civil suit filed in district court for injunctive relief that:

- (1) requires specific conduct necessary to abate the public health nuisance; and
- (2) prohibits specific conduct that constitutes a public health nuisance.

B. The Commissioners Court authorizes the County Attorney to file civil suits seeking the relief described in Subsection (A).

**SECTION 9. NON-EXCLUSIVITY.** The enforcement mechanisms provided for herein are not intended, nor shall they be construed, to limit in any way other remedies, causes of action, or rights provided for by law. The filing of this Order does not restrict, limit, or





# Masks: Administrative Discretion

- Accommodations could be made for medical or developmental reasons, according to a mask exemption process and administrative discretion
- Administrative discretion allowed for not requiring masks during outdoor activities, physical education, band, extracurriculars, for children with special needs, and while eating/drinking

**SECTION 5. PUBLIC HEALTH NUISANCE.** A School that does not comply with Minimum Health Standards described in this Order maintains a public health nuisance that is subject to abatement.

**SECTION 6. Community Expectations:**

A. An individual who is not fully vaccinated will continue to wear face coverings, keep at least three feet of physical distance from other individuals, and avoid crowds and poorly ventilated spaces.

B. An individual who is fully vaccinated will continue to wear face coverings and, to the extent feasible, keep at least three feet of physical distance from other individuals when the risk of transmission to those who are not fully vaccinated is significant.

C. A person in control of a site is encouraged to support and provide incentives for workers and patrons to obtain the vaccine to reduce the risk to those who are unable to receive the vaccine, including children under the age of 12.

D. Nothing in these rules prevents a person in control of a site from requiring additional precautions to prevent the spread of COVID-19.

**SECTION 7. MINIMUM STANDARDS.**

**Face Covering Applicable to School.**

A. Students, staff, and visitors over the age of two are required to wear a face covering while on school property or school buses during Stages 3, 4, and 5 as set forth in Austin Public Health's Risk-Based Chart. In this section, school means all public schools, including public charter schools in Travis County.

B. A principal, the responsible staff member, or administrator of the students may determine when it is not appropriate to require students, staff, and visitors to wear a face covering.

**SECTION 8. ENFORCEMENT.** This Order may be enforced as follows:

A. Through a civil suit filed in district court for injunctive relief that:  
(1) requires specific conduct necessary to abate the public health nuisance; and  
(2) prohibits specific conduct that constitutes a public health nuisance.

B. The Commissioners Court authorizes the County Attorney to file civil suits seeking the relief described in Subsection (A).

**SECTION 9. NON-EXCLUSIVITY.** The enforcement mechanisms provided for herein are not intended, nor shall they be construed, to limit in any way other remedies, causes of action, or rights provided for by law. The adoption of this Order does not restrict, limit, or





# Masks: Enforcement Question



August 20, 2021

## 1. Expectations and Definitions.

### 1.1. Community Expectations

- 1.1.1. An individual who is not fully vaccinated will continue to wear face coverings, keep at least three feet of physical distance from other individuals, and avoid crowds and poorly ventilated spaces.
- 1.1.2. An individual who is fully vaccinated will continue to wear face coverings and, to the extent feasible, keep at least three feet of physical distance from other individuals when the risk of transmission to those who are not fully vaccinated is significant.
- 1.1.3. A person in control of a site is encouraged to support and provide incentives for workers and patrons to obtain the vaccine to reduce the risk to those who are unable to receive the vaccine, including children under the age of 12.
- 1.1.4. Nothing in these rules prevents a person in control of a site from requiring additional precautions to prevent the spread of COVID-19.

### 1.2. Definitions.

- A. AUSTIN PUBLIC HEALTH'S RISK-BASED CHART means the chart attached as Exhibit 1 to this rule.
- B. FACE COVERING means ~~any form of covering that fits snugly over their nose and mouth, such as a commercially made or homemade fabric mask, scarf, bandana.~~
- C. SCHOOL means all public schools, including public charter schools and public colleges, in Travis County

## 2. Face Covering Applicable to School.

- 2.1. Students, staff, and visitors over the age of two are required to wear a face covering while on school property or school buses during Stages 3, 4, and 5 as set forth in Austin Public Health's Risk-Based Chart. In this section, school means all public schools, including public charter schools in Travis County.
- 2.2. A principal, the responsible staff member, or administrator of the students may determine when it is not appropriate to require students, staff, and visitors to wear a face covering.

~~2.2. A principal, the responsible staff member, or administrator of the students may determine when it is not appropriate to require students, staff, and visitors to wear a face covering.~~





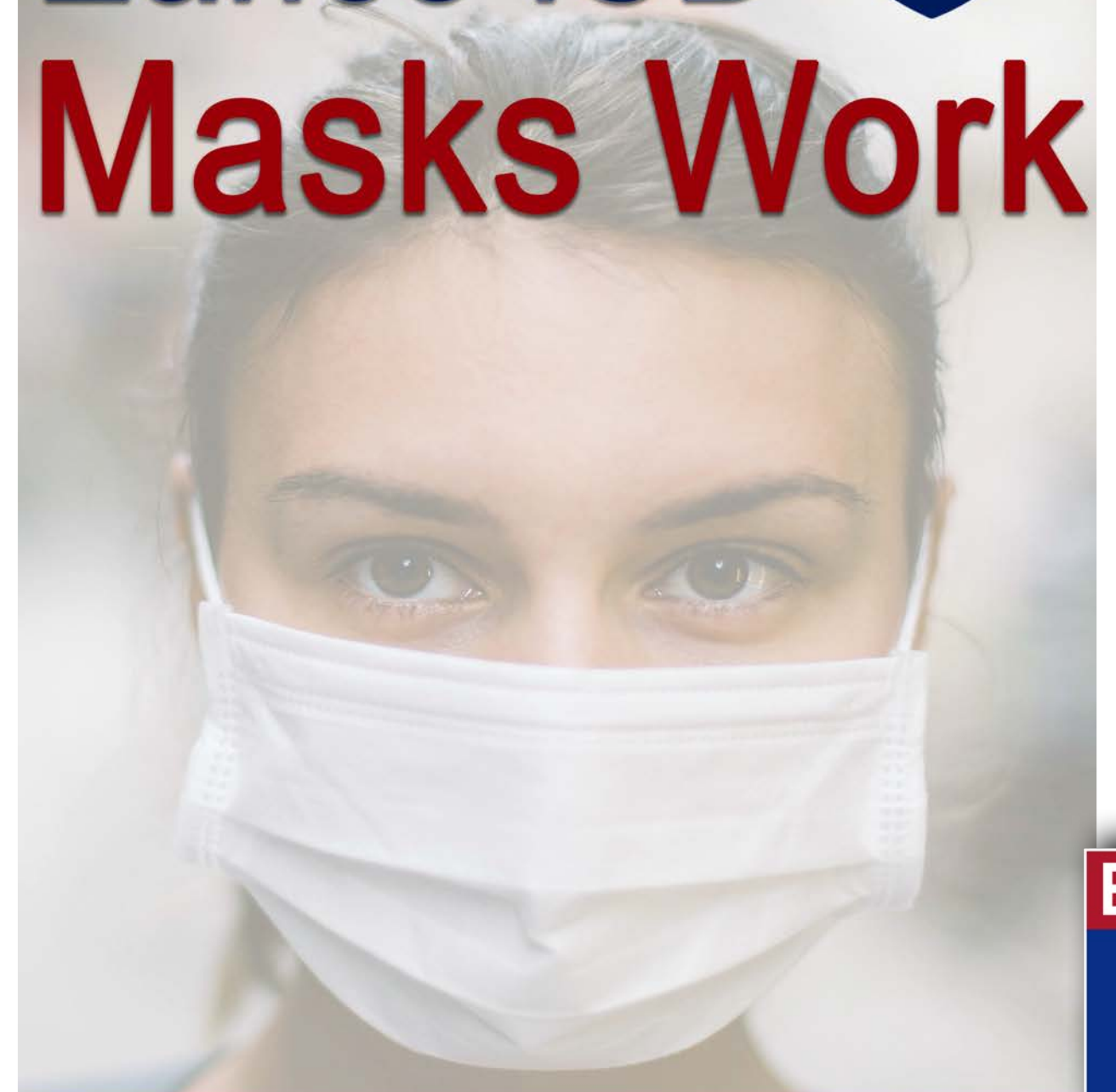
# Masks: Requirements

## Visitors

- Eanes ISD will significantly limit visitors on all campuses while navigating specific stages of the pandemic
- Visitors with appointments now must wear masks inside all Eanes ISD facilities

*for Visitors*

Hey  
Eanes ISD  
Masks Work



The CDC strongly recommends wearing masks indoors regardless of vaccination status





# Masks: Requirements

## Condition of Employment

- As an employer, Eanes ISD is able to enforce the law through health and safety employment rules
- The current Travis County Order mandates staff must wear masks in our buildings
- **Therefore, at this time, all Eanes ISD staff are required to wear masks inside buildings and buses**

*for Staff*

Hey  
Eanes ISD  
Masks Work

The CDC strongly recommends wearing masks indoors regardless of vaccination status





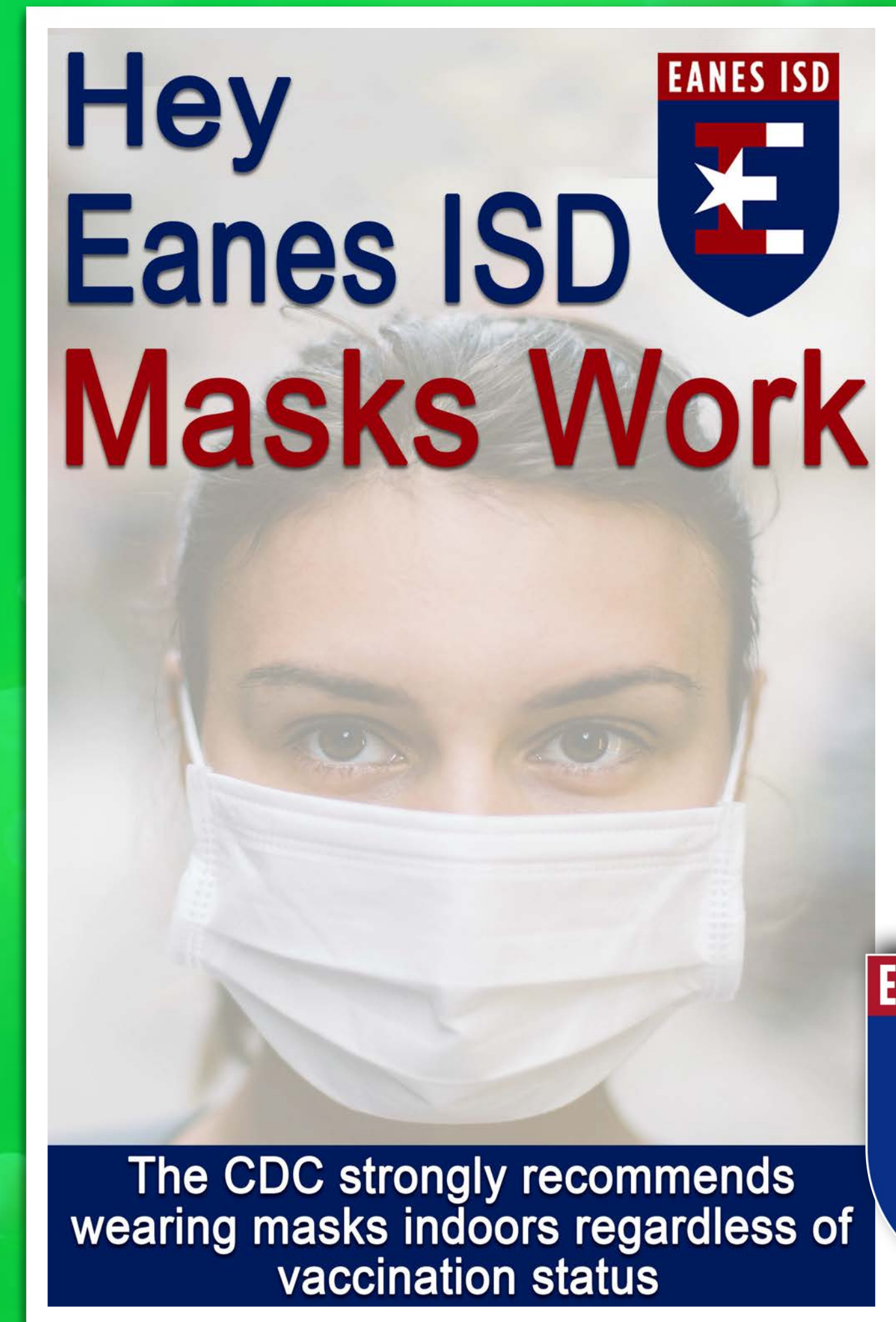
# Masks: Enforcement Options to Consider *for Students*

## Building Enforcement

- No one allowed inside building or bus not wearing a mask
- One- to three-day suspension

A

OR

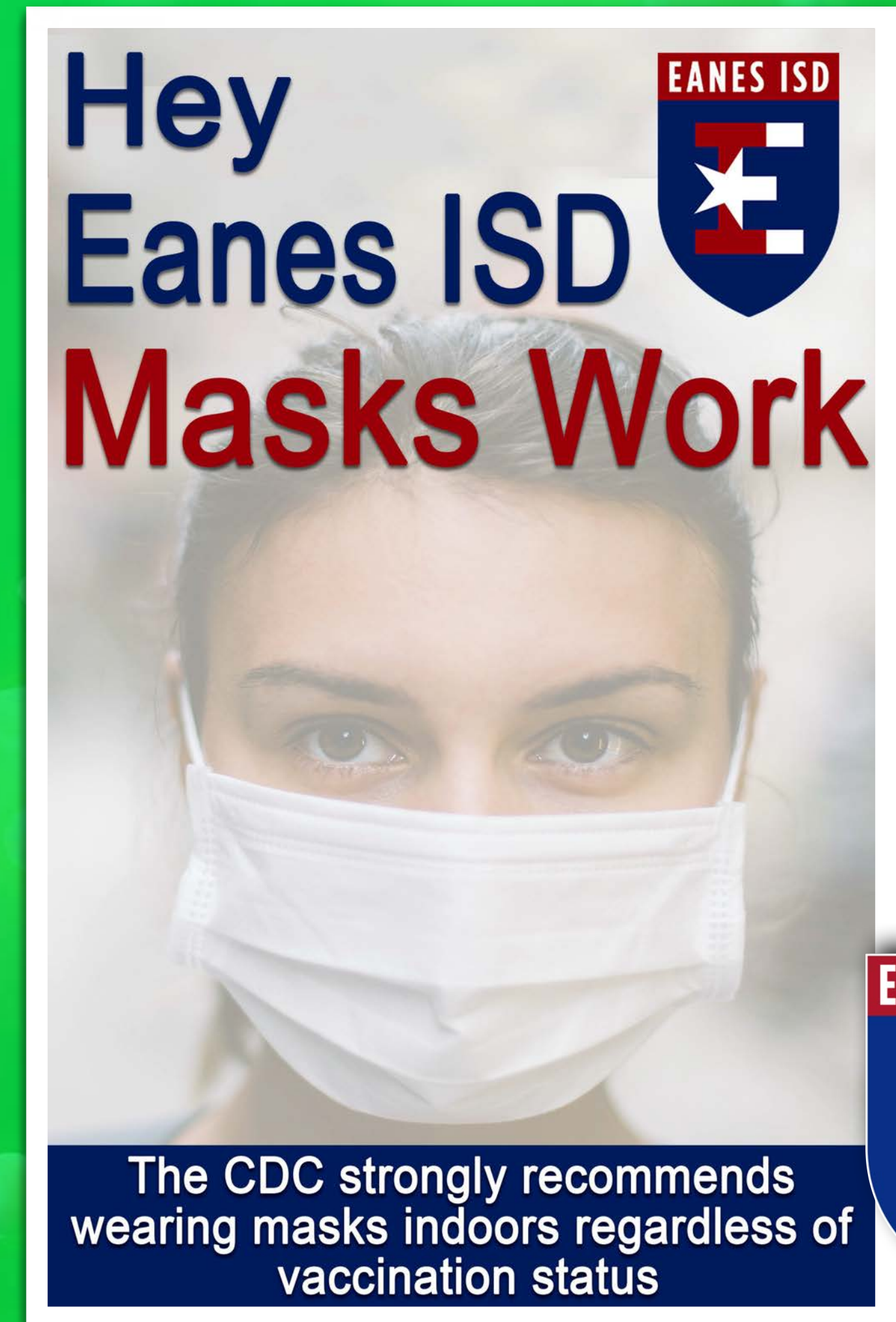




# Masks: Enforcement Options to Consider *for Students*

## Classroom / Common Areas Enforcement

- B**
- Only students wearing a mask would have full access to all parts of building
  - Those not wearing a mask would be provided a separate learning area supervised by a staff member
  - Accommodations for medical or developmental reasons, according to administrative discretion and a mask exemption process





# Thoughts from the Board

- Staff sick leave
- Enforcement of masks for students
- Other input

A stylized logo for 'Q&D' where the 'Q' is green, the ampersand is blue, and the 'D' is orange. The logo is set against a white background with a grey horizontal bar above and below it.

Questions  
And  
Discussion

