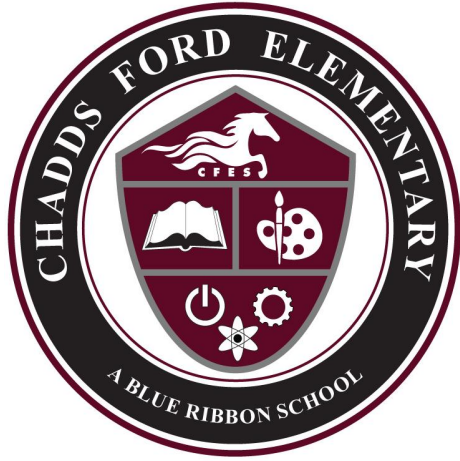


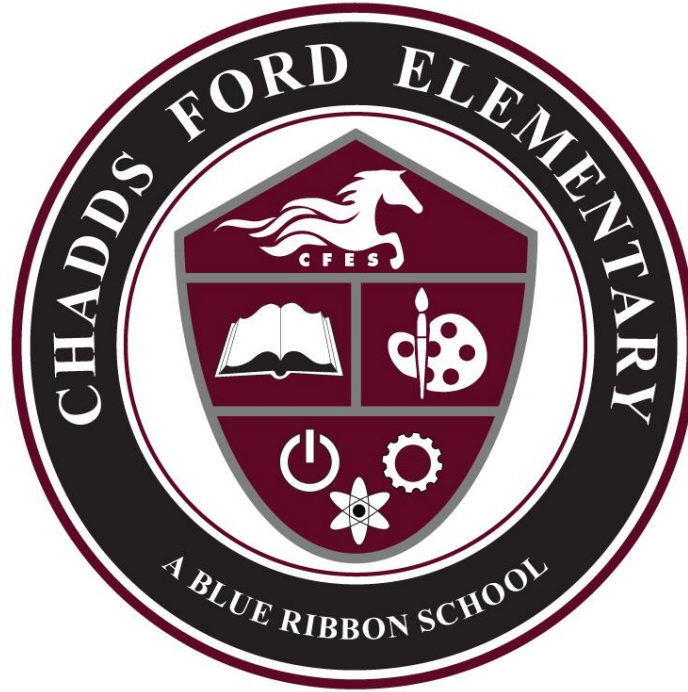
Welcome To Chadds Ford!





What one word describes what you envision for your child's school experience?

Submit your response using the above QR code:



The CFES daily vision/mission is:

To build a community focused on educating every child, while respecting tradition and embracing innovation.

We are the **Chargers!**



CFE Mascot:

Chadd the Charger

School Colors:

Maroon and white

Schedule/Calendar:

6 day cycle (A - F)

History ♦ Art ♦ Tradition



Chadds Ford was built in 1925. Additions have been added over the years with a full renovation in 2003.

CFE is equipped with a gym, a cafeteria, a library, 29 classrooms, a science lab, a computer lab, and a Makerspace.

We have 1 AM& 1 PM K, 1 Pre-first, 4 sections of 1st, 2 sections of 2nd grade, 3 sections of 3rd grade, 2 sections of 4th grade, and 3 sections of 5th grade.

Current student enrollment is 354.

CFES staff is comprised of 70 professionals.

History ♦ Art ♦ Tradition



The Art Show and Sale:

Founded in 1949 by Betsy Wyeth, the popular Chadds Ford Art Sale & Show features works by over 70 professional artists from the Brandywine Valley and beyond.

Artists showcase a variety of works to satisfy every taste and budget.

The 72nd annual show will be held in March of 2022!

Not to be missed!

History ♦ Art ♦ Tradition



The May Fair:

Began in 1949 as a full day school fair that included a pet show, May Procession, Maypole dance, a full rodeo, softball games, a community sing, and a square dance.

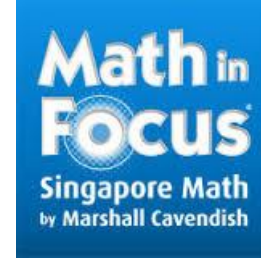
Today, it still includes a traditional Maypole dance (3rd grade girls), as well as choral performances by all grades, and a parachute dance by 3rd grade boys.

Date to be determined based on status.

Academics



- ★ We utilize the Math in Focus (Singapore) Mathematics curriculum in all grades
- ★ We utilize the WONDERS Reading Program for reading, writing, and spelling instruction.
 - We typically use an RTII model (grades 1-5) to provide targeted small group instruction.
- ★ We use a combination of STC and FOSS Kit-based Science programs. These programs focus on experiments and hands-on experiences.
- ★ We utilize a Pearson Social Studies program that includes guided reading books which allows us to differentiate readability and content.
- ★ We also use various supplemental programs to extend, remediate, and enrich our students.
- ★ We utilize Seesaw for our digital learning management platform.



Academics - SEL



- ★ We have a 30 minute block of time in the morning for classroom meetings.
- ★ Classroom meetings will focus on improving students interactions within the classroom, school, and in the community.
- ★ Topics will focus on our Core Essential program, executive functioning skills, and social skills.
- ★ Students will start the school year engaging in lessons that will focus on creating relationships and make connections! This will remain a focus throughout the school year.

SOCIAL EMOTIONAL LEARNING
VISION STATEMENT

EMPOWER STUDENTS TO DEVELOP...

skills to collaborate, communicate, evaluate, think critically, cope and regulate emotions	behaviors of integrity, respect, grit, perseverance, and goal setting	(a) mindset of growth, self-confidence and self efficacy
--	---	--

IN AN ENVIRONMENT THAT...

focuses on growth, equity and access for all learners	fosters a healthy sense of self and social awareness, is culturally responsive, embraces diversity, develops empathy and respect for others	nurtures supportive relationships between students and staff, students and peers, and staff and colleagues
---	---	--

WITH AN INSTRUCTIONAL PROGRAM DESIGNED TO...

provide students meaningful learning experiences that build public spirit and promote critical thinking and leadership	produce opportunities and pathways to support the academic, social, and emotional needs of the whole child	nurture a safe, inviting, and joyful learning environment celebrating student work and accomplishments
--	--	--

UCF | Unionville-Chadds Ford School District

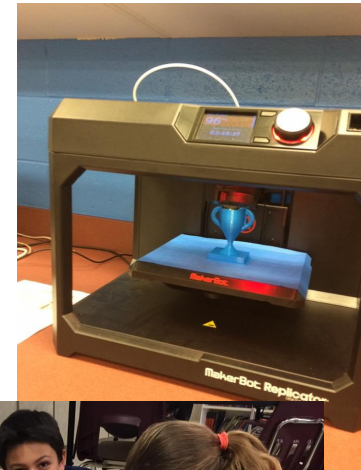
Technology @ CFES



- ★ We view technology as a tool for learning.
- ★ In a typical year all students have “Technology” 1 day per cycle (6 days) in our Innovation Tech Lab. Computer class focuses on a great range of skills and applications. Students create using Garageband, iMovie, and Tinker (coding) just to name a few programs. (This year 30 classes consecutively)
- ★ All teachers have a Smartboard, document camera, a laptop, and an iPad to use in the classroom at all times. All students have a district issued device. (K-1 Ipad & 2-5 Chromebooks)
- ★ We currently maintain:
 - 8 Chromebook carts (25-30 Chromebooks per cart)
 - 3 iPad carts (25-30 iPads per cart)
 - Classroom iMac stations

*Note: every student is assigned a device this year which adjust our in- house technology.

- ★ Innovation Labs
 - 2 Maker Lab classrooms
 - Mobile carts
 - 3D Printers
 - Robotics (Lego, Dash/Dot, Drones)
 - Project-based learning activities



Our School Climate...



CFE SCHOOL CLIMATE

Living our daily vision:

To build a community focused on educating every child, while respecting tradition and embracing innovation.

Clear and Consistent School Expectations:

Show Respect
and
Be Responsible

Growth Mindset	Character Education	Olweus Program
<ul style="list-style-type: none">★ Daily philosophy and vocabulary★ Goal Setting★ Intrinsic motivation	<ul style="list-style-type: none">★ Teaching core values★ Recognizing positive behaviors★ Support and encouragement★ Community support and involvement	<ul style="list-style-type: none">★ Teaching tolerance★ Support and mediation★ Progressive discipline when necessary

School Expectations



CAFETERIA

Show Respect

- ♦ Use indoor voices
- ♦ Use your manners (please and thank you)
- ♦ Keep hands/feet to yourself



Be Responsible

- ♦ Keep your area clean
- ♦ Raise your hand for help
- ♦ Stay in your assigned area



CHARGER  PRIDE

RECESS

Show Respect

- ♦ Use equipment properly
- ♦ Include others and show kindness



Be Responsible

- ♦ Follow the rules of the game
- ♦ Play fairly and safely
- ♦ Follow adult directions
- ♦ Put equipment away when finished



CHARGER  PRIDE

HALLWAYS

Show Respect

- ♦ Walk on the right side
- ♦ Be considerate of other classes



Be Responsible

- ♦ Walk quietly
- ♦ Keep your hands by your side

CHARGER  PRIDE

BUS

Show Respect

- ♦ Walk quietly in the hallways and on the bus sidewalk
- ♦ Be considerate of others



Be Responsible

- ♦ Stop and wait to board the bus
- ♦ Listen to the bus driver's directions



CHARGER  PRIDE

BATHROOMS

Show Respect

- ♦ Use the bathroom properly
- ♦ Respect others' privacy



Be Responsible

- ♦ Wash and dry your hands



CHARGER  PRIDE

Core Essentials: 21-22



Monthly Traits

- ★ Initiative
- ★ Individuality
- ★ Contentment
- ★ Service
- ★ Self-Control
- ★ Compassion
- ★ Cooperation
- ★ Hope
- ★ Perseverance

Monthly Core Essential traits will be showcased:

- ★ Students will be recognized on CFE-TV, newsletters, and our social media channels.

Growth Journals



Pre-First

My Growth Journal



First Grade

My Growth Journal



Second Grade

My Growth Journal

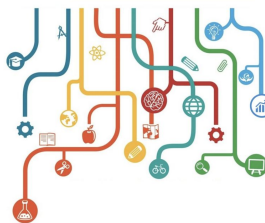


My Growth Journal

- ☐ Personal Growth - The Growth Mindset
- ☐ Me and my Goals
- ☐ My Buddy
- ☐ Our Character Traits
- ☐ My Monthly Reflections
- ☐ My Expectations and Social Contract
- ☐ My Friendship Pledge

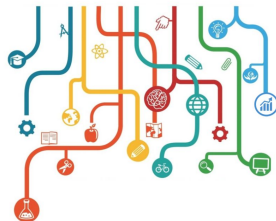
Third Grade

Growth Journal 2020



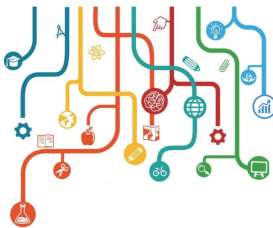
Fourth Grade

Growth Journal 2020



Fifth Grade

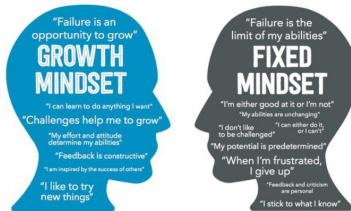
Growth Journal 2020



Growth Journals



The Growth Mindset



What does this mean to you?

SMART Goals
are the best goals

S Specific: what exactly do you want to do?

M Measureable: how will you know you've reached your goal?

A Achievable: Is this goal possible?

R Relevant: Why? Why is this goal important to you?

T Time-Bound: When exactly do you want your goal to be met?

SEPTEMBER 2020 | OCTOBER

FRIENDSHIP

Using your words and actions to show others you care

Care Community

© 2020 CARE COMMUNITY, INC. ALL RIGHTS RESERVED

Why do you think the octopus was chosen to represent friendship?

THE FRIENDSHIP PLEDGE

~ Make a commitment to be a friend ~



I will treat others with RESPECT and KINDNESS.

I will have COMPASSION for others.

I will have the COURAGE to be an upstander.

It is my RESPONSIBILITY to help others who are being treated unkindly and to report any bullying behaviors.

Student signature _____

Date _____

CFES Safety



Infrastructure/Physical Safety

- ★ Two levels of security to enter the building
- ★ ID/visitor check-in process
- ★ Security personnel hired for school events
- ★ Schoolwide and classroom emergency plans
- ★ Evacuation and lockdown drills completed monthly
- ★ Emergency “buttons” located throughout the building
- ★ Connected to external security system / 911
- ★ Staff training (ongoing)
- ★ District-level Safety Committee and continuous improvement



CFES Safety



Social-Emotional Wellness and Safety

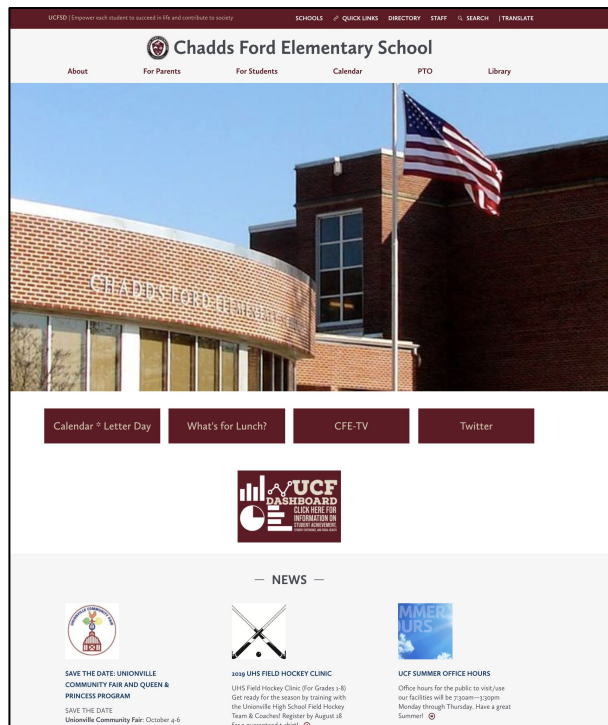
- ★ Growth Mindset Culture
- ★ Character Education and Climate Initiatives
- ★ K-5 Guidance Curriculum with integrated lessons
 - Anti-bullying program
- ★ Professional Development for staff
- ★ Personnel to support our students and staff:
 - School Counselor, Mrs. Kara Sowden
 - Psychologist, Dr. Kate Hottenstein
 - Board Certified Behavior Analyst, Ms. Danielle Stepanik
 - Social Worker (shared in buildings), Mrs. Kate Rentschler
 - Instructional Support Teacher -Mrs Christine Dewees
 - School Staff Nurse - Mrs. Melissa Hocking



Communication



- ★ Backpack Express
- ★ Teacher websites
- ★ [School and District websites](#)
- ★ e-News (biweekly email)
- ★ School Messenger: email blasts
- ★ [Facebook](#), [Twitter](#), YouTube, [Instagram](#)



Optional School Activities and Clubs



- ★ 4th-5th Grade: CFE-TV - morning announcements
- ★ 4th-5th Grade Band and/or Orchestra - School sponsored
- ★ 4th-5th Grade Chorus - School sponsored
- ★ 4th-5th Grade Reading Olympics - School sponsored
- ★ Makerspace / STEM Courses (K-5) - School sponsored
- ★ Chess Club - PTO sponsored
- ★ Foreign Language Club (French, Chinese, Spanish) - PTO sponsored
- ★ Science Explorers Club (outside company)
- ★ Girls on the Run - outside sponsored
- ★ 5th Grade Robotics Club - school/outside supported



Ongoing Projects 21-22



Green House STEM Project

**Planning, funding, and
building an outdoor garden
and STEM-focused area**

Outdoor Spaces

**Utilizing, funding, improving,
and maximizing our outdoor
spaces.**



Meet our Nurse and School Counselor

- ★ Here to support you!
- ★ School Counselor: Kara Sowden ksowden@ucfsd.net
- ★ CFES School Nurse: Melissa Hocking mhocking@ucfsd.net
- ★ Certified School Nurse: Kathy Einthoven

Nurse [Presentation](#)

PTO - Parent Teacher Organization



PTO

How can you be
a partner?



CALLING ALL

**SUPER
HEROES**



**Mitchell Elementary
Back-To-School Drive**

Let's help bring bright smiles to our friends at Mitchell Elementary as they begin their new school year! To support the students at our sister school please consider donating:



Reminder! Family Fun Night is Friday! We have a schedule

Questions?
Submit using the
below QR code

