

Mount Greylock Regional School District School Committee

Location: Zoom Remote Meeting

Date: Tuesday, December 22, 2020

Time: 6:00 pm

Please use the following link to join the live meeting:

Join Zoom Meeting

<https://zoom.us/j/96598823892?pwd=VGxOb1NSMENscjZDdFVzK3U2RmVUdz09>

Meeting ID: 965 9882 3892

Passcode: 544878

One tap mobile

+1 646 876 9923 US (New York)

Per Governor Baker's order suspending certain provisions of the Open Meeting Law, M.G.L. c. 30A sec. 20, the public will not be allowed to physically access this School Committee meeting.

Please see our Public Comment Policy for Guidelines regarding Public Comment at Remote Meetings:

<https://z2policy.ctspublish.com/masc/browse/mtgreylockset/mtgreylock/BEDH-R>

Special Open and Executive Session Agenda

- I. Call to order
- II. MISSION: At Mount Greylock Regional School District, our mission is to create a community of learners working together in a safe and challenging learning environment that encourages restorative based processes, respect, inclusive diversity, courtesy, integrity, and responsibility through high expectations and cooperation resulting in life-long learning and personal growth.
- III. Public Comment
- IV. Approval of minutes
 - A. December 8, 2020 **VOTE**
 - B. December 14, 2020 (public comment session) **VOTE**
 - C. December 14, 2020 (presentation/questions session) **VOTE**
- V. Student Representative Update
- VI. Athletic Director Updates

- VII.** Principal Updates
 - A. Lanesborough Elementary School
 - B. Williamstown Elementary School
 - C. Mount Greylock Regional School
- VIII.** Acting Director of Pupil Services Update
- IX.** Director of Curriculum and Instruction and Director of Academic Technology Updates
- X.** Superintendent Updates
 - A. Flu Vaccine update
 - B. Grounds update
 - C. Student Learning Time regulations
- XI.** Business Administrator Update
- XII.** Finance Subcommittee Update
 - A. Approval for use of WES Renewal Fund (HVAC Project) **VOTE**
 - B. MGRS Fields Perkins Eastman Proposal **VOTE**
 - C. MGRS Renewal Fund **VOTE**
- XIII.** School Committee workshop date discussion (Jan. 9 or Jan. 16)
- XIV.** Other business not anticipated by the Chair within 48 hours of the meeting
- XV.** Motion to move into Executive Session with no intent to return to Open Session per M.G.L. Chapter 30A, Section 21(a)(3) to discuss strategy with respect to collective bargaining with Mount Greylock Educators Association (all units)

This meeting will be broadcast on WilliNet TV channel 1302 in Williamstown. It will be posted on the MGRSD YouTube page within 24 hours of the meeting

<https://www.youtube.com/channel/UCLR0nrLhpZHlyPFUhaMxPSg>

From: [Stephen Dravis](#)
To: [School Committee](#)
Subject: Public Comment for Dec. 22 meeting
Date: Tuesday, December 22, 2020 9:58:54 AM

This email relates to agenda item No. 3, public comment.

Dear School Committee,

Please reconsider the district's practice of not posting supporting material for the committee's deliberations (i.e., the "packet") until after a meeting has occurred. As you know, district policy requires members of the public who wish to speak to submit comments two hours before a virtual meeting or to sign up to comment at an in-person meeting before it begins.

Denying people the ability to make informed comments serves no public purpose.

When packets were printed on paper, it made sense to limit pre-meeting distribution to the committee members. It is 2020, and you have the capability to publish non-sensitive materials online well in advance of meetings.

The only possible reason not to do so is to prevent robust public discourse. That may be the goal of some School Committee members. I am not sure it is a goal shared by your constituents.

Respectfully,
Stephen Dravis
Williamstown resident

From: [Alison Carter](#)
To: [School Committee](#)
Cc: [Vigiard, Stacie](#)
Subject: For public comment
Date: Tuesday, December 22, 2020 3:05:27 PM

Hi, everyone. I'd like to submit the letter below for public comment for this evening's meeting. Thank you for your efforts!

—
Dear School Committee,

As a child, the sports field was where I learned some of life's greatest skills: teamwork, leadership, decision-making, commitment, determination, communication, self-confidence.

As a community member and parent, I hear so many stories about our athletic programs and the life-skill-building and joy they bring to our students - and also how our current infrastructure is insufficient for Mt Greylock's athletics needs.

This is why previous subcommittees prioritized a new playing field, on top of the improvements necessary to bring current facilities into compliance with Title IX and ADA requirements. And the analyses conducted by the Phase 2 subcommittee led them to favor a Brockfill turf field over a new grass field for a number of specific reasons, including that a grass field is likely more expensive than a turf field over the turf's lifespan.

Thanks to the gift from Williams College, the School Committee is in a position to not only provide our students with increased opportunities for athletics and the learning experiences that come with them, but also set aside \$1,000,000 in a renewal fund to help offset costs of major school needs in the future, reducing the burden on our towns and taxpayers.

How amazing is that? What an incredible opportunity for our children, the district, and our communities.

I encourage you to support the efforts of the Phase 2 subcommittee and move forward with the bidding process for a Brockfill field, with the knowledge that your support will positively impact the lives of our students for years to come.

Sincerely,

Ali Carter
Williamstown parent of three and 2018-2020 School Committee member



Mt. Greylock Regional School District

School Committee Open Session Minutes

Date: December 8th, 2020

Start: 6:02 PM

Adjourn: 9:13 PM

Location:

Remote via Zoom

*Per Governor Baker's order suspending certain provisions of the Open Meeting Law, G.L. c. 30A sec. 20, the public will not be allowed to physically access this School Committee meeting.

In Attendance:

Committee Members:	Also Present:
Julia Bowen Christina Conry José Constantine Curtis Elfenbein Carrie Greene Michelle Johnson Steve Miller <u>Absent:</u>	Dr. Jason P. McCandless, Superintendent Joe Bergeron, Business Administrator Jake Schutz, Principal - MGRS Nolan Pratt, Principal - LES Kristen Thompson, Principal - WES

Item	Comments	Motion	Second	Vote
I. Call to Order	Meeting called to order by C. Conry at 6:02 PM			
II. Mission	MISSION: At Mount Greylock Regional School District, our mission is to create a community of learners working together in a safe and challenging learning environment that encourages restorative based processes, respect, inclusive diversity, courtesy, integrity and responsibility through high expectations and cooperation resulting in life-long learning and personal growth.			
II.I Agenda Item Request	Prior to Public Comment, C. Greene requested that the Finance Subcommittee report be added after the Superintendent's Report as item XIII, moving all items down one. C. Conry agreed to the agenda revision.			
III. Public Comment	1. C. Conry read a comment from Amie Hane of Williamstown regarding a pediatrician letter that may be added to the meeting. She presented data from the state regarding COVID clusters and did not think that schools are safe from the spread.			



Mt. Greylock Regional School District

	2. Cathy Keating of Williamstown gave her opinion about returning to schools in-person and shared a letter that local pediatricians wrote sharing that opinion.			
IV. Approval of Minutes (VOTE)	A. October 16th, 2020 (VOTE) - MOTION to approve minutes from October 16, 2020 by J. Bowen, seconded by C. Elfenbein Bowen, AYE; Conry, AYE; Constantine, AYE; Elfenbein, AYE; Greene, AYE; Johnson, ABSTAIN; Miller, AYE	Bowen	Elfenbein	6-0-1
	B. October 22nd, 2020 (VOTE) - MOTION to approve minutes from October 22, 2020 by M. Johnson, seconded by J. Bowen Bowen, AYE; Conry, AYE; Constantine, AYE; Elfenbein, AYE; Greene, AYE; Johnson, AYE; Miller, AYE	Johnson	Bowen	7-0-0
	C. November 23rd, 2020 (VOTE) - M. Johnson noted her name is misspelled - Michelle is with two Ls. MOTION to approve minutes from October 23, 2020 by M. Johnson, seconded by C. Elfenbein Bowen, AYE; Conry, AYE; Constantine, AYE; Elfenbein, AYE; Greene, AYE; Johnson, AYE; Miller, AYE	Johnson	Elfenbein	7-0-0
V. Subcommittee Reorganization (VOTE)	A. Negotiations (VOTE) - C. Conry admitted she'd like to stay on as Chair of the Negotiations Subcommittee and may be joined with J. Bowen and C. Elfenbein. C. Greene questioned how experience would come into play for the new members, but said she was fine with the proposed group after some discussion. J. Bowen and C. Elfenbein accepted the nominations.	Greene	Johnson	7-0-0



Mt. Greylock Regional School District

	<p>MOTION to select Julia Bowen, Christina Conry, and Curtis Elfenbein as the MGRSD Negotiations Subcommittee by C. Greene, seconded by M. Johnson</p> <p>Bowen, AYE; Conry, AYE; Constantine, AYE; Elfenbein, AYE; Greene, AYE; Johnson, AYE; Miller, AYE</p>			
	<p>B. Policy (VOTE) - C. Conry proposed appointing J. Constantine as Chair of the Policy Subcommittee alongside J. Bowen and C. Greene. Dr. McCandless explained the need for the full subcommittee. All parties accepted their nominations.</p> <p>MOTION to appoint Julia Bowen, José Constantine, and Carrie Greene to the MGRSD Policy Subcommittee by S. Miller, seconded by C. Elfenbein</p> <p>Bowen, AYE; Conry, AYE; Constantine, AYE; Elfenbein, AYE; Greene, AYE; Johnson, AYE; Miller, AYE</p>	Miller	Elfenbein	7-0-0
<p>VI. Discussion of future workshops to discuss other liaisons or subcommittees</p>	<p>C. Conry explained that she had drafted a doc with Dr. McCandless and Joe Bergeron, and after conversations with MASC, they hoped to define the duties of liaisons and subcommittees for the public and the community. Proposed workshops about what the roles were were put forth for the school committee to attend. C. Greene wasn't clear why a workshop was needed. J. Bergeron said they wanted to define roles enough so that anybody new who took on the role would understand what expectations would be, and it could be best discussed in a workshop setting. Documentation, policies & existing expectations were all points to be made clear. J. Bergeron said there may be shorter workshops as it may not take that much time to discuss and finalize. C. Greene thought that evaluations should take a whole meeting, to which J. Bergeron agreed.</p>			
<p>VII. Superintendent Updates</p>	<p>A. FY21 Enrollment Updates - Dr. McCandless shared a lengthy presentation about why enrollment is important, district enrollment data, as well as information on Berkshire County enrollment. M. Johnson had a question about online learners. J. Bowen asked about demographics and how enrollment numbers decreasing would affect the budget. J. Bergeron gave information on the district budget related to enrollment. C. Greene suggested that returning homeschool children next year won't have been budgeted due to the low numbers from this current year, and that if we get a large number of returning students, it may create a budgetary issue. Dr. McCandless spoke about planning for the worst and hoping for the best, and how COVID has affected the Berkshires in some ways.</p>			



Mt. Greylock Regional School District

	<p>J. McCandless suggested collaboration with other school districts in the area for remote learning. J. Bowen had a question regarding Berkshire County Education Task Force and its effect with the district.</p> <p>B. Educational Update - Dr. McCandless explained some of the COVID policies and protocols the district is following, along with help from health officials and the state. He gave extensive data regarding COVID numbers in our schools and also explained the balance of our district during the pandemic regarding remote vs in-person learning. C. Greene asked about the Memorandum of Agreement and where it stands. J. McCandless said it was agreed upon by the school committee and the union and it stands. He said that continued discussions next week regarding the MoA will include a local representative from the MA Teachers Association as well as the district council. J. Bowen asked about other creative ways to involve students in a virtual way to reach students while learning remotely. M. Johnson expressed concern for disadvantaged students as well as the resources the district has for mental health. J. Constantine asked for clarification on what the process for revisiting the MoA was. There was a conversation about negotiations and Dr. McCandless explained that in all his experience, there are certain types of negotiations that should not be in public.</p>
<p>VIII. Finance Subcommittee Report</p>	<p>C. Greene spoke about the district’s long-term renewal planning and what may be coming up. She explained how the Capital Gift was meant to pay for capital projects for Mt. Greylock. C. Greene told the committee about renewal funds and the proposal for the turf field that arrived. She spoke on some discrepancies on the price bids presented and why they were sent back. J. Constantine had questions about the origin of the monetary number for the renewal fund and if it can be amended and reported. J. Bowen said a proposal may be helpful detailing where money from gifts should be used.</p>
<p>IX. Discussion of Turf Forum(s) and Format</p>	<p>Dr. McCandless spoke about the research he has done on our turf project and the various concerns from the community regarding the project. He proposed a forum, giving opposite views in the community an hour each to speak on the issue. J. Bowen showed her support in holding the forum to hear feedback. The committee discussed the best way to hold a forum on the issue, noting it would be beneficial for newer members to hear public comment as things may have changed. M. Johnson shared her concerns on having a Q&A with opposing views that may get heated. There was a discussion about how to get the word out to the community about the forum and how in what order it should be held. It was decided that the first hour will be public comment and the second hour will be a presentation and Q&A for the committee.</p>
<p>X. Discussion of MASC Workshop regarding School Committee Practices and Procedures / Potential Dates for Workshop</p>	<p>C. Conry was hoping to focus on Mt. Greylock specifically with one or a few MASC workshops. She wanted feedback from the committee to see their opinions. J. Bowen shared her gratitude for getting this on its feet and that she’d be happy to participate. M. Johnson also shared her support but suggested a January date for the Saturday workshop.</p>



Mt. Greylock Regional School District

XI. Other business not anticipated by the Chair within 48 hours of the meeting	C. Conry had no business to report.			
XII. Motion to adjourn	MOTION to adjourn by M. Johnson, seconded by J. Bowen Meeting adjourned at 9:13 PM.	Johnson	Bowen	7-0-0

Respectfully Submitted,
Eli Phillips
Mount Greylock Minutes Recorder

DRAFT

Documents shared with School Committee 12/08/20 Meeting:

-  00 School Committee Agenda 12.8.20
-  03a Public Comment A. Hane
-  03b Public Comment, C. Keating
-  04A 2020 10 16 Open School Committee DRAFT minutes
-  04B 10_22_20 Meeting Minutes DRAFT
-  04C 11.23.20 School Committee Minutes Draft
-  05a Draft Subcommittee Members Functions Roles
-  05b Proposed MG Sub Committee AssignmentsFY20_21
-  07A 2020-2021 Enrollment Report updated 12.7.20
-  07B NBPlettertoschools
-  08a Doodle Results for Forum Dates
-  08b Williams College - MGRS Capital Gift Agreement
-  FinSubcomm03Dec2020 minutes DRAFT

Mount Greylock Regional School District School Committee

Location: Zoom Remote Meeting

Date: December 14, 2020

Time: 5-6 pm Join Zoom Meeting

Special Open Session/Phase II Turf Forum

Agenda

- I. Call to order
- II. Mission: At Mount Greylock Regional School District, our mission is to create a community of learners working together in a safe and challenging learning environment that encourages restorative based processes, respect, inclusive diversity, courtesy, integrity, and responsibility through the high expectations and cooperation resulting in life-long learning and personal growth.
- III. Public Comment regarding Artificial Turf Field
- IV. Motion to adjourn

Called to order at 5pm

Present: Christina, Julia, Michelle, Carrie, Curtis, Steve, Jose

Also present: Jake, numerous members of the community

1: Dave Armet: For:

Hello my name is Dave Armet. I am a physical therapist with almost 30 years of experience evaluating and treating a variety of injuries and physical dysfunctions.

As the debate about this field project has gone on there have been concerns raised about increased risk of injury associated with turf surfaces. I am here today to completely dispel those concerns. Studies often cited come from Division 1 college football or European professional soccer but none of them are conclusive enough to stop athletes from playing on these fields. Professional teams would never risk their multimillion dollar investments in players if they knew the field surface was contributing to injury. There is just too much at stake financially. To date there are no definitive and conclusive studies indicating increased risk of injury from playing on a turf surface.

But let's stay focused on our local field situation. What is very definitive and conclusive is the surface we have been subjecting our children to at MG is an absolute atrocity. It has led to injury...I've been a spectator and seen them happen. I've been the therapist to treat many of these injuries. Injuries caused by running on a rutted uneven surface. Injuries caused by daily practice on a grass surface that feel more like concrete. Injuries caused by foot placement in what could only be referred to as "field potholes".

Given what the students have been playing on, my professional opinion would be that a turf surface would actually reduce the risk of injury for users of the field. We have seen what happens to grass fields. Even a new grass field in this climate will deteriorate quickly and we will be right back in the same situation of having a surface that contributes to injury.

I would also like to add a brief mention about concussions. In the inevitable event of an athlete hitting their head as they fall to the ground during a game or practice, I would much rather have that surface be turf with more shock absorption and cushion than the rock hard surface that currently exists.

So the choice from a safety standpoint is very simple. Building a turf field is the best choice for student safety to reduce the risk of injury.

2: Anne O'Connor: Against:

Thank you for hosting this forum.

The main point I wish to make with my comments today is to urge the committee to take a step back and widen the scope of what is under consideration. Rather than zeroing in on what kind of new field to build, the committee should take advantage of its own relative newness in order to make a fresh start. I urge members to examine the larger question of what is needed for a successful athletics and wellness program, and what makes sense for the school as a whole, now and into the future.

Why pick an expensive, short-lived product whose main purpose is early spring access to a playing field, when cross-country skiing and track are two of the most popular programs at the school? Properly maintained organic grass fields for the entire campus would provide close to the same amount of playing hours, with far fewer financial, environmental, and health impacts. With my written comments, I will submit a letter I wrote to the Berkshire Eagle in September 2019, in which I viewed the project through the lens of climate change. Today, we should also consider how the landscape will change after Covid-19. The next ten to twenty years will bring substantial challenges that will require tremendous resilience and creativity from us all. Rather than locking us into an expensive, outdated, technological solution for one small problem within the overall picture, the district should instead focus instead on developing, diversifying, and preserving its many assets. Mt Greylock has a huge, beautiful campus. I urge the committee to pause the artificial turf project and more broadly examine its options and possibilities. Thank you.

3. Suk Namkoong: For:

Turf fields may have an increased risk with regards to injury with contact sports but I find that does not necessarily correlate with our school here. What is a much bigger risk is the overuse injury that would occur with rescheduling games and practices and compressing those schedules.

4. Huff Templeton: Against:

Our PILOT fund, or gift, provides a unique opportunity to invest in programming not infrastructure. Let the School Council give recommendations to establish innovative curricula in areas that will make our students intellectually, physically, and emotionally stronger.

I parent two MGRS graduates. One daughter took an Arabic class as an independent study with Principal McDonald a few years ago giving her an advantage in college. Another daughter took concurrent classes at Williams and later managed and tutored for the CLIA tutoring program.

Informal initiatives and innovative programs like these could become more formalized and widespread.

Are we investing enough in Theatre and the performing arts, which caters to the LGBTQIAP community?

Is our anti-racism training comprehensive?

Are we in compliance with Williamstown Town Meeting on Articles 36 & 37?

Are we being ethical and creative, as opposed to simply legal, with our IEP and 504 plan students?

These PILOT funds are not restricted to maintenance as WES's were. We can borrow at historically low rates for major infrastructure improvements like the fields and pay for preventative maintenance the way every other school does, through annual budgeting. Our rate of return on the PILOT funds is higher than our borrowing rate. Why spend it down on financeable items?

When WES had HVAC problems there was a huge incentive to put off maintenance due to the high rate of return on the PILOT. WES is considered a success only because we aren't considering the programs that were jettisoned such as the full-day Side by Side and Mandarin. We may not have major maintenance repair costs at WES but we also don't have inclusive universal preschool.

This is not free money and it shouldn't be treated as such. We have no obligation to future taxpayers to preclude maintenance expenses on our buildings. We have an obligation to students and parents to make this school the best it can possibly be.

Use the PILOT like R&D funds. The highest opportunity costs are not investing in our children when we have the chance.

Decouple the field decision from the PILOT fund. New fields of any kind are either worth the cost of borrowing, or they aren't. Balance the total cost of ownership, environmental and playing time considerations. This is your decision alone and not that of other Town boards and leaders.

Think about traditionally marginalized groups and what you can do to improve their situation over the next 30 years. Great schools attract new taxpayers.

5. Al Terranova: For:

The simple truth is that grass, be it "natural" or organic does not solve the problem. As an example; about 21/2 years ago the School Committee allotted \$55,000 to "fix" the John Allen Field. Over the next several years we spent another fifteen to twenty thousand dollars on the fields. This does not include the \$ 30,000 for the organic field. That is over \$100,000 in three years and the fields remain unplayable. What is the solution?; "build another John Allen Field. " We in public service are often called to task for not running government like a business. What business solves problems with solutions that do not work?

6. Chris Malone: Against:

My name is Chris Malone and I'm the parent of twin girls in the freshman class. I am also currently the head coach of the Boys' Cross-Country team.

First and foremost, thank you for your collective efforts regarding the proposed athletic infrastructure improvements. I know it's not an easy process or decision.

I can understand why people support the artificial turf field. For instance, people may find it moreplayable" in inclement weather conditions and it may be to Mount Greylock's advantage if consolidation decisions need to be made in the future regarding Berkshire County schools. These are valid arguments.

However, I oppose the artificial turf field for the following two reasons:

1. Environmental: There is potential that toxins and contaminants may leech into the soil and nearby water supply. Even with the use of BrockFILL instead of crumb rubber, there is still the plastic carpet to contend with, as well as the unknown environmental impact of BrockFILL. Although the company representatives may downplay these risks, I would be skeptical as I think they're more focused on making a sale. Despite claims by the architect that the field is recyclable, I understand there is currently no recycling facility in the US.
2. Financial: I understand an artificial turf field will need to be replaced in 8 to 12 years at an estimated cost of \$400K to \$600K. These costs will be passed on to the taxpayers. We shouldn't expect that Williams College will foot the bill.

By deciding to proceed with the artificial turf field, I feel as if we'd be passing on these environmental and financial risks to those to follow us in 10 years. If I didn't think the environmental risk was significant or if I didn't care much about a financial burden on those in the future, then I'd probably support the artificial turf field. However, I do think these risks are significant enough that I'm opposed. I'm afraid there will be a day of reckoning and we're "kicking the can down the road " to those in the future.

If the School Committee decides to proceed with the artificial turf field, I ask that it do so in the most environmentally-friendly way as possible. I also ask that it try to limit financial obligations to taxpayers in the future.

Finally, if the artificial turf field is approved, I ask that you consider including a track. Approximately one out of every six students at Mount Greylock runs either cross-country or track. I'm sure the Nordic Skiing team would also use it. Students from other sports could also use it as well as the general public. Thank you for your time and consideration.

7. Brian Gil: For:

From Brian Gill, MG Phys Ed. and coach
Brief summary of comments for school committee

Many positives for athletics

- Consistent playing surface
- Avoiding mud season
- Play in extended seasons (Nov/Dec)
- No need to rent other local turf fields
- Generating revenue from rental of our turf field

Based on studies related to athletic injury, risk attenuation is **NOT** a factor in this decision.

A natural grass playing field, while wonderful, would **NOT** benefit phys ed students as we are not allowed on the one game field we have now. **A natural grass field would actually limit the benefit to the smallest of groups.**

- football (if we have it), soccer, and lacrosse

With the installation of a turf field athletics could gain hundreds of student hours of use per year **AND Physical Education students could gain thousands of student hours of use per year.**

- Roughly 350 daily Phys. Ed. students might conservatively gain 7-10 extra weeks of days of outside time over the course of a year.
- Poor weather, shoulder season, and even winter freeze would not inhibit outdoor PE
- Liability often dictates when/how we get outside in PE. Turf mitigates this.
- Five minutes after a rainstorm we can be outside on turf.
- During a month and a half of mud season, we can be outside on turf.
- Winter on warmer days (like the past 3 weeks) when the ground is frozen or water sits on top of frozen ground, we can be outside on turf.
- Football, soccer, cross-country, lacrosse, baseball, softball, and track & field benefit from turf. (running sports benefit because mud/wet hinder any kind of safe speed work, hurdle work, and plyometric/jumping work).

8. Wendy Penner: Against:

Taking the time to get it right is important to the long-term health and well-being of our district-do not be rushed into making a decision about a big capital project without having all the information you need. Please be mindful of the danger that a poorly executed process will lower overall trust in the school committee and in the administration making your jobs even more difficult.

Has a comprehensive lifecycle analysis been conducted that takes into account all the knowable information about what is needed for a new athletics field, and the environmental, financial and public health tradeoffs of grass versus turf? A lifecycle cost analysis should consider the cost of disposing of

and replacing the turf at the end of 10-12 years, and a strategy for how that cost would be covered. The disposal and replacement costs must be considered before we commit to this path.

Mass DPH has a warning page about artificial turf last updated June of 2020. Are you willing to take on the risks that playing on turf entails? I'm mindful of our district's reliance on wells and very sensitive to any possibility that runoff could cause water quality problems. We just learned earlier this month that a chemical found in car tires that runoff from chemicals in tires and crumb rubber on turf fields is killing Coho salmon "I don't think anyone could have anticipated this" said an environmental engineer commenting on the study. We can anticipate.

Suitable alternatives exist to a turf field! The Toxics Use Reduction Institute at UMass Lowell has published two case studies that show how organically managed playing fields in Springfield and Marblehead have performed as well as artificial turf and much better than conventionally managed natural grass athletic fields. These organic fields stand up to heavy rain, regular sports and community use and can be played on for a full season with no time lost at the beginning of the year waiting for them to dry out. They are not contaminated with chemicals. The soil and grass are restored with organic products and gradually strengthened to become a healthy resilient playing surface. Instead of ecological harm, they contribute to a healthy ecosystem and increased biodiversity.

Members of this committee have previously discarded concerns from the community members as "white noise" and dismissed people as not caring about what is best for the kids when they questioned a turf field option. I vigorously reject this characterization and ask you to take your responsibility of doing better seriously. Take the time to collect information to assess needs, costs, Lifecycle costs, environmental and health impacts, and weigh the views of diverse stakeholders. I know you have the capacity to do a better job and look forward to following your progress and supporting you in getting the information, and the resources you need to support the well-being of our most precious resource, our children. Williamstown

9. Thomas Ostheimer: For:

I am in support of the turf field for the following abbreviated reasons: one, our current field is inadequate and unsafe; two, a turf field would lessen student/anxiety created by questions whether or not game will be played, and if not when will it be rescheduled; third, a turf field will allow the school to host both pre and postseason tournaments; and fourth, given such a large number of students who play sports at Mount Greylock, a turf field would be a real boost for them during these trying times.

10. Molly Polk: Against:

Good afternoon, members of the School Committee and Dr. McCandless. Thank you for the opportunity to speak today. In my teaching, in my parenting, in my work as a colleague and community member, I try to embody the idea that while we may go far alone, we can go further together. As I reflect at this juncture on the issues that are before us at today's forum, I can't help but asking, "How can we come together and go further? How can we model for the young people of our community a way forward through a complex situation-a way forward that is transparent and inclusive?" I have great confidence that everyone speaking here this evening believes that their perspective represents what is best for the students of Mt. Greylock Regional School. What dismays me tremendously, though, is that there has

not been, to date, a meaningful, sustained effort on the part of the School Committee to bring diverse perspectives together to investigate-and engage in dialogue-about the concerns pertaining to the Williams College gift that have been sparked by the Phase II Subcommittee's recommendation to use the gift for an artificial turf field.

At other times over the last year and a half, I have submitted statements about the value of exploring options for natural grass field maintenance, as have others with much greater expertise than I. I trust that the newly elected School Committee will thoroughly review all of the documentation that has been collected. It was thanks to the dedicated efforts of the Phase II Subcommittee that options for an artificial turf field have been put on the table, but I urge the School Committee to recognize the critical importance of bringing the community together to explore and debate more than just this singular option for our students. Some argue that this process has gone on long enough and that all of the options have already been weighed, but I would ask: by whom? A project of this nature, size, and cost does take time, and, to get it right-really right-so that we can go as far as possible as a community, there need to be more voices invited and welcomed into dialogue, and lingering, unanswered questions about the financial, environmental, and health costs associated with artificial turf need to be addressed honestly and substantively. Thank you for your time.

11. Malcolm Smith: For:

I am Malcolm Smith of Williamstown, a constituent, a voter, parent of a student.

Thanks to ALL for carrying water for our community; pro, con and particularly the School Committee.

Tis is my first-time addressing SC on this subject. I'm part of a "quiet majority" in favor of turf, and particularly of the SC making a decision.

I urge School Committee to decide soon, and decide to go forward with turf.

I echo the pro-turf arguments that I've heard now so many times for these many months:

- too many months of the school year grass doesn't work. We need a choice between grass and turf. Please give us the turf option.
- maintaining grass isn't cheap either.
- it's safe. Getting kids and community members outside has tremendous health value that outweighs other health concerns.
- Environmental concerns have been addressed repeatedly over this long process. I'm devoted to conservation causes, and a single turf field is just fine.
- spend the money to benefit the kids and the community; there's ample reserve remaining even then

Stop delaying, looking, considering, studying — that costs money, too. Please make the decision soon and move on to other matters.

Please move forward to get a turf field.

12. Bridget Spann: Against:

Thank you School Committee for your work on this issue.

I am Bridget Spann and the parent of an 8th grade child who plays sports at Mount Greylock. I support investing in quality athletic playing fields as I recognize that sports and physical education are important healthy outlets for youth and I agree that the current fields are not adequately maintained or safe. I remain concerned, however, that playability is considered by some the single most important factor to the exclusion of other critical considerations, which then leads to identifying a single artificial turf field as a need rather than as a want; this is like considering driveability as the single most important factor and then purchasing a Hummer to allow for travel in Berkshire County in almost any weather conditions, while not factoring in important considerations such as its life cycle cost and environmental impact, factors that steer most of us into buying other vehicles. Rather than spending an exorbitant amount on a single artificial turf field, these funds could be better utilized to invest in a new natural grass field that could be managed organically, as well as a track; remaining funds could be used to improve the existing grass fields through organic management. The substitution of BrockFill for crumb rubber does not allay the serious financial and environmental concerns about the artificial turf proposal. In addition to the study by the Toxics Use Reduction Institute, multiple other independent studies, meaning those not conducted by the artificial turf industry, have found that in nearly all scenarios artificial turf fields have higher life-cycle costs than natural turf for an equivalent area.

Traverse Landscape Architects, which provided consultation to the Phase II subcommittee, represented an artificial turf field as the best return on our investment. How? by using a "cost per hours of use" projection that has been written about in Forbes magazine, under the heading "How taxpayers get fooled on the cost of an artificial turf field". In its July 2019 presentation, Traverse also neglected to include any information about the significant disposal costs that our community would incur when replacing the infill or the artificial grass carpet. Traverse also referenced a recycling option for the plastic grass carpet that does not exist in our country, with the result that tons of waste from artificial turf fields is piling up because it can't be recycled and nobody wants to pay for proper disposal.

In this same Return on Investment chart, Traverse included a \$500,000 replacement cost for a natural grass field after 10 years, a figure that the two organic turf specialists with whom I consulted could make no sense of; after improving the soil chemistry to support the growth of the roots of the grass, one would never want to rip out a properly maintained organic grass field and replace it 10 years later. To be clear, in advocating for an organically managed natural grass field, I am not talking about laying down sod.

Communities including Springfield and Northampton have experienced great success with organic management of natural grass playing fields. Their athletic fields have met their expectations for playability and cost while also being environmentally-friendly, safe, and healthy. These organically managed fields are available for more days of play because as the organic matter in the soil is increased, the fields can handle more wetness than conventional grass fields, which means fewer canceled practices and games.

As you move forward with your decision-making process, at a time when professional athletes are expressing a preference for natural grass due to their concerns about increased risk of injuries, I ask that you utilize a sound financial analysis of the life cycle costs associated with an artificial turf field compared to the costs of an organically managed natural grass field and share with the community what the additional days of play available from an artificial turf field is going to cost us.

Thank you for your serious consideration of this important matter. Bridget Spann

13. Ali Carter: For:

I am hoping that as you think about the information presented tonight you're able to answer these key questions, presented along with how I've been thinking about them as a member of the School Committee over the past two years:

- First, can we make grass work? I think we should start with the assumption that grass is the ideal option. My understanding is that this is not realistic for several reasons: lack of a water source for irrigation, poor drainage, high annual maintenance costs, and our challenging weather conditions that lead to unsafe playing conditions and cancelled games.
- Is a Brockfill turf field unsafe? The data say no, from a temperature perspective and a body impact perspective. Regarding chemical exposure, our kids are exposed to a level of toxicity every day through things like furniture, rugs, car interiors, food packaging, and makeup. I do not feel it's fair to vilify environmentally minded artificial turf, free of the chemicals flagged as of concern, while overlooking the other exposure in our lives.
- What is the true net environmental impact of a turf field, in context and in direct comparison to a well-maintained grass field? In a time where 70% of carbon emissions come from the oil and gas industry, and nearly everything we own or do comes at some cost to the environment, we need to have an honest conversation about the environmental impacts of a Brockfill field. I find it hard to reconcile being okay with the high environmental impact of our cars, clothes, food, coffee, and lawn maintenance while vilifying something that has comparatively low environmental impact and helps our kids be more active and healthy, and builds critical life skills.
- Finally, how are other schools balancing field costs with expensive regular maintenance needs? Many schools that do not have millions of dollars of gift money have turf fields. How are they making it work?

For financial, safety, environmental, and health reasons, I am in favor of a Brockfill turf field. I hope you feel the same. Thank you.

14. Ken Kuttner: Against:

Williamstown Resident, father of a 2013 Greylock grad.

Two general points.

The first relates to the environmental consequences.

An artificial turf field is an environmental disaster, to put it bluntly. For one thing, its GHG emissions far exceed those from a natural grass field. Using data from published studies, I calculated that an artificial turf field of this size would emit 527 tons of GHG over 10 years. Maintaining a natural grass field does involve some GHG emissions, due to mowing and the like; but the grass also sequesters some CO₂. On net, published estimates indicate that the emissions over 10 years would be about 31.4 tons - only 6% of what comes from the artificial turf field - or if you prefer, 1,861 trees. I'd be happy to share those calculations with anyone who is interested, by the way.

Waste disposal is the other environmental concern. Ultimately, an artificial turf field is a massive piece of plastic, and there is currently no economically viable way of recycling it - in fact, there is a worldwide glut of quote "recyclable" plastic right now, and virtually none of it is being recycled. Our used artificial turf field would ultimately go into a landfill, where it would remain for millenia.

The second general point has to do with finances.

Related to the previous comment: the estimates we received does not include the substantial cost of disposing of the worn-out field, which happens every 8-10 years.

And another problem with financial calculations presented to justify the artificial turf field is that they treat current and future costs as equivalent. Because most of the artificial field's costs are up-front, this stacks the deck against the natural grass field, whose costs are spread out over time. All of my introductory economics students know this is wrong: the correct way to put costs and benefits on an equal footing is to calculate the present value, downweighting those future costs by an appropriate financial rate of return. Correcting this error significantly increases the cost of the artificial turf field, relative to the natural grass alternative.

15. Rob Abel: For:

Hello. My name is Rob Abel and I live at 323 Hopper Road in Williamstown.

I am a financial advisor at MountainOne Investments, where we manage over three quarters of a billion dollars for individuals and institutions, mostly right here in the Berkshires.

To be fully transparent, I have three children at Mt. Greylock that would certainly use and benefit from a turf field. That said, we have heard from teachers and administrators over the past few years that every kid would benefit from having turf available at Mt. Greylock.

One of the major concerns that has been raised is the financial impact that the turf project

would have on future school budgets and tax payers. This is of course a legitimate concern and one that needs to be reviewed.

Here are the facts to consider:

A conservative estimate of the Current Williams Gift amount is approximately \$4 million

The Phase 2 Project cost is about \$2.8 million

This figure includes \$500k for a track and \$1.2 million for a turf field with the upgraded and more expensive NON crumb rubber fill 12 years to turf replacement, although there are fields that go as long 15-20 years and, a Replacement cost of \$500,000.

To get a sense of how this scenario could play out, and using the figures I just mentioned, I went back 12 years and replicated what would have happened if the turf field was built in 2008, and today (12 years later), we were at the point of needing to replace the field. Next, I used the ACTUAL performance results of the Williams Endowment over that time to see what the school committee could do now with this large impending cost.

Now, before I move on to how things worked out, I want to be sure people don't think I am "cherry-picking" a better than average time period in the Williams Endowment history. In fact, the average annual return of 7.84% from 2008 to 2019 is actually well below the Endowment's 10 year average of 11.2% and the Endowment's 20 year average of 9.1%. Furthermore, this time period started with two negative years, including down 18% in year two!

The 12 years I am using includes the great recession of '08-'09, includes Hurricanes Sandy, Irma & Maria. It includes the Russian invasion of Crimea, it includes the California wildfires, and of course includes the Covid-19 global pandemic we are in the midst of right now. As I said, this was a below average 12 year period.

Back to the Turf field that would benefit so many.... If this project was completed in 2008, at the height of one of the worst stock market periods in history, the residual value of the Williams Gift (that being the of money amount remaining after building the administration building, upgrading athletic fields for title 9 and ADA compliance, and installing a new turf field for the students at Mt. Greylock) would have grown from \$1.2 million in 2008 to \$2,752,707 in those

12 years. That's right, over 2.7 million dollars! Today, 12 years later, there would be more than enough to cover the costs of replacing the turf field that provided value to each and every Mt. Greylock student to come through its doors during that time.

While past results never guarantee future performance, this example clearly illustrates that the Williams Gift can not only upgrade our athletic facilities for all and build a much needed turf field for all at Mt. Greylock today, it can sustain that field for far into the future.

This is not an opinion, this is just MATH.

Thank you.

16. Erin Keiser-Clark: Against:
(typed by secretary from video)

Hearing what people are saying, important to have facts clear. We do not have an organic grass field at the high school, that has been mis-stated repeatedly, that has concerned me, that's an untruth, that's not the model we are being asked to consider as an alternative.

I also want to share that I have the perception that I'm part of the quiet majority in the town who has not felt comfortable with the process. I understand parents, youth, kids on the sports team, full range of taxpayers not comfortable with the process, who feel it has been centralized in conversation around those who want the turf, haven't had an open process where all can feel comfortable sharing what concerns and perceptions on what our tax dollars will be used for and what our kids will play on, and precisely who will benefit and how.

My greatest concern and hope is that this new slate of people on our committee will be inclusive and share with us options. A few years back our selectboard asked for advice on how to bring up major builds, and the advice was to provide options to the community, let them participate in the process. I am asking you to please let us participate in the process and allow us to see a comparison.

17. Jim Easton: For:

Hello. My name is Jim Easton and I am the Golf Course Superintendent of Taconic Golf Club in Williamstown.

I am speaking tonight in favor of an artificial turf surface and feel obligated to highlight some of the inherent challenges and difficulties in maintaining grass athletic surfaces in our region.

1.) The largest hurdle is rooted in biology.

Spring sports are often scheduled to begin well before soil temperatures are warm enough for the grass plants to fully break dormancy.

A similar pattern emerges during the latter portion of the fall sports season.

Cool season grasses need to be fully growing and vigorous to support sustained use by student athletes, regardless of fertility source.

A new grass field with modern drainage and irrigation would still fail to thrive during the shoulder seasons. Basic plant and soil biology presents an enormous obstacle in producing a safe, reliable grass playing surface in our region.

2.) An often overlooked aspect of maintaining a grass surface well is the countless hours behind the scenes performing maintenance.

A safe and reliable surface requires a regimented program of cultural inputs and an active rotation scheme.

If irrigation is installed, there is a considerable amount of oversight required to ensure its

performing as intended.

It's unclear to me if the school district will have resources available to provide the level of professional care a new grass field would require.

It's my opinion that an artificial playing surface would be an incredible asset for the school district's students.

It would largely eliminate the need to constantly fight the local climate and keep our students active on a much more consistent level.

Thank you.

18. Dr Nick Wright: Against:

Just a few years ago there was urgent concern over levels of perchlorate in the wells supplying water to the MGRS. That problem was solved, yet today the School Committee is considering the installation of an artificial turf field containing a variety of volatile organic compounds as well as heavy metals, including lead. Some of these compounds have been found to be carcinogenic.

The concentration of these compounds will vary by source of the discarded rubber from which the artificial field is constructed. The degree of exposure to these materials cannot easily be estimated, yet we would ask our children and grandchildren to play on them for sport as well as for physical exercise. Outcomes of these exposures may be long term, as well as short. Unfortunately, no reliable long term studies are available. None of the short term studies show that playing on artificial turf reduces the incidence of leg, knee and ankle injury, although one peer reviewed experimental study of college football players found a statistically significant increase in knee ligament injury in the artificial turf group. The control group in this study played on natural grass. This study has been dismissed because the study population was college age, not high school, but the age differences are small. The study should be repeated among high school students, but, as it stands, the study suggests how little we know about the effects of artificial turf on athletic health.

All things considered, the prudent course, in my opinion, is to reject artificial turf, and instead, improve and then maintain carefully the existing natural grass.

Thank you for your attention.
Nicholas H.Wright, MD, MPH

19. Talia Cappadona and Julius Munemo: For:

Hello school committee members and everyone else watching.

My name is Talia Cappadona and I'm on the girls soccer and lacrosse teams.

And I'm Julius Munemo. I do boys soccer, and I'm gonna start our statement off. As both athletes and members of this subcommittee we cannot stress how important a cause the prospect of a turf field has

become for us. I know the fields at Greylock are where I made some of my favorite memories. Be it during my own games, or watching other students play, the current athletic setup at Greylock has a special place in my heart.

And that's why it's so important to us, even as seniors, that this school uses the capital gift money, or at least part of it, on the construction of a synthetic turf playing surface. While the nostalgia and memories filled in the current game field are great, the field itself has long since had its day. Covid has tremendously affected our last soccer seasons, and left us with a feeling of unfinished business here at Greylock.

Our abridged senior seasons here at Greylock have left us with a certain perspective that we did not previously have. When we joined the subcommittee as Sophomores, a shiny new field sounded like the perfect remedy to the bounces, bruises, and blunders of highschool soccer. This past season put that in check. The field was not the most important aspect of this season. When it boils down to it, the people you surround yourself with, your team and your coaches, define the year for you, especially for me. The heart of the athletic experience lies in our teammates and our coaches. Understanding that my time on these fields is over there is nothing I want more than a synthetic turf field for the Greylock teams to come. They helped us through this year, I feel it is the least I can do, as their captain, to help them through the foreseeable future.

A more reliable playing surface will provide those students with a blanket to protect them against the unreliable world that we live in. Bidding now would help ensure that this school's students can make some of the same memories that we've been lucky enough to make—for years to come.

20. Michael Nixon: Against:

Thank you to the committee members for your time.

I am all for outdoor pursuits, physical and outdoor education.

In addition to the environmental issues already mentioned being serious and legitimate concerns, my major focus and concern is the financial. I totally understand there is a need to address the state of the playing fields and funds should be used from the Williams college donation. But not 2.5 million.

The generous gift from a Williams donor was for two words: educational enrichment. So why the excessive funding for one area of the curriculum? Surely soccer and lacrosse players will be the main beneficiaries, a fraction of the student body. Again, I am all for outdoor pursuits.

Would it not be more aligned with the goals of this large gift to have an expenditure that benefited a larger amount of students beyond dedicated athletes?

Furthermore, on the financial concern, I taught at a public school in Australia where they installed artificial turf (because of an ongoing drought situation) but the maintenance and replacement costs far exceeded forecasts. So by all means, improve the fields as much as possible, but not with 2.5 million. Thank you.

21. Peter Harrison: For:

- Williamstown resident
 - President of Williamstown Soccer Club
- a. When significant time and money is invested in building and maintaining grass fields, the tendency is that field usage will become more restrictive as it will be “saved for games”. This results in a better experience for the 200 kids playing organized sports but likely no benefit to the wider school population or the broader community. We need a solution that will increase usage not further restrict it.
 - b. The weather in Berkshire county is a real issue. While the weather in 2020 has been quite mild all year, frequently field conditions become unplayable early in November and in 2018 and 2019 the start of Youth Spring League season was delayed until the start of May due to late winter storms and freezing conditions. Conditions were poor at even at WES whose fields are actually much better quality than MG.
 - a. Both the local pick up soccer group and Ajax youth soccer club (in normal times) make use Williams College turf fields through the winter. Basically the only thing that prevents athletic activity is lying snow. The moment it melts, the space is usable.

If we lived in the Carolinas, or Virginia or even New Jersey I don't think there would be much of a debate, but we don't. We live in Williamstown, on the exposed side of a mountain with a climate that is not conducive to grass playing fields almost 2/3s of the school year. A turf field will not only extend the amount of time for athletic outdoor use, but it will actually benefit all the kids in school and have greater value to the community as a whole.

Thank you.

22. Mark McDermott: Unify: A field with a track:

1) I wish to advocate primarily for a field of either sort being constructed as soon as possible and I ask that it include a modern, rubberized track as soon as that can be added.

I view this as an excellent use of funds. I also view it as a community resource. Far more than simply a few sports teams will use it. Many community members of all ages of will walk, play and gather there. As we emerge from the depths of the pandemic, we will need places to exercise, mingle and commune. Getting outside is healthy. Please authorize the expenditure, and please plan for a track. This is well worth the money.

2) While I would be happy with an excellent grass or artificial field, there cannot be any doubt that an artificial surface will have far greater use from November through April. If you need proof, look at the fields at Williams College. You cannot find higher quality grass fields than theirs -- yet you do not see them being used much or at all by college or community kids in organized or spontaneous play during those months. You can, however, observe, a lot of use of the artificial surfaces during those months.

3) I do not believe that the potential direct health hazards of artificial surfaces are high enough to warrant ruling it out as a surface. Very reasonable questions have been raised about the safety profile of artificial surfaces-- however, given the specifics of the planned use, I do not feel that any hazards that may exist are likely enough or significant enough to weigh heavily in the committee's decision. If the committee decides to proceed with an artificial rather than a natural surface, I would ask the committee to use a product vetted to be amongst the more environmentally friendly options now available.

Thanks for all your work on this issue!

Marc McDermott, MD EdM

23. Blair Dils: For:

My name is Blair Dils and I have been an English teacher, part time PE instructor, and soccer coach for 21 years. Our commitment has always been to give our students the best possible educational experience that they can have, and the construction of a high quality turf field honors that commitment. When the community approved the construction and renovation of a new high school in 2016, it showed its clear commitment to students by creating 21st century science labs; high level art spaces; a beautiful theater; and one of the best gym spaces in the county. But the quality of the fields are substandard and—quite honestly—embarrassing. In 2017 my soccer players chose not to host a tournament game at our school--their home field--because of the poor condition of our game field. Grass fields don't maintain themselves, and the labor and financial resources needed to maintain grass playing surfaces on a yearly basis will not be sustainable.

Opponents of the turf field would like townspeople to think that turf fields are unsafe. This is a disinformation campaign designed to muddy the truth just enough so that people who may not have been able to study the matter closely will not want to--"take a risk"--and support the building of a turf field. There isn't risk here. Turf fields are reliable, multi-faceted, widely accepted, and preferred by coaches and athletes. I am hard-pressed to believe that hundreds of high schools, prep schools, municipalities, the MIAA, colleges, and universities would assume the liability of installing an unsafe playing surface if turf fields were actually as unsafe as opponents say they are.

There's a reason we no longer play lacrosse with wooden sticks, protect our football players with leather helmets, or use hand-stitched leather soccer balls. They are outdated. The turf field is the modern playing surface. We have an obligation to bring all of our programs into the 21st century and do what is best for our PE students and our student-athletes. Given our location and our resources, building a turf field is the right thing to do.

24. Hugh Daley: For a 1.5 million endowment:

I am speaking tonight to ask the School Committee to prioritize the set up of a \$1.5M building endowment fund for Mount Greylock. The Williamstown Selectboard, Finance Committee, and the Lanesborough Selectboard all support the idea.

In 2017, the District agreed to transfer the cost of the parking lot from the Williams Gift into the Mount Greylock building project. We did that to free up money in the Williams Gift for a building endowment fund. We also did that knowing it would increase the total debt service of the project which, in turn, increased each Town's tax rate. The general idea was that our cost of funds (about 3%) would be less than our investment return (probably 7%), which would create earnings that could be used to finance capital needs without further tax increases to the Towns.

This is the critical point. We have a once in a lifetime opportunity to have investment earnings, not taxes, secure the future capital maintenance of our school. We are beyond fortunate to have this opportunity. Let's not squander it.

After you've established the building endowment, I would allocate the remaining money into "have-to's" and "want-to's". The Title IX and ADA compliance are "have-to's". Your "want-to's" are the adds like a track or turf field. Please make sure your future bids will give you the detail you need to decide between the "have-to's" and "want-to's". I believe our goal is a lifetime of fitness for all our students. We want our infrastructure to offer that opportunity to the broadest number of students at the most efficient cost possible.

Please protect our investment in our school, please honor the burden already being borne by taxpayers to create the building endowment fund, and please allow this investment in our District's future to grow for the benefit of all for years to come.

Please set aside \$1.5M into a building endowment fund.

Thank you.

Sincerely,

Hugh M. Daley
Member, Board of Selectmen - Williamstown, MA

25. Joe Finnegan: For:

Hi - Joe Finnegan- 91 NW Hill Rd Wtown - we moved to town 15 years ago and I was quickly drafted to be a youth soccer and youth lacrosse coach for several years - we spent many great afternoons spring and fall running around the fields of Wtown from WES to Mount Greylock - my recollection is that depending on the season there are 7-10 natural grass fields in use at the high school and that all of those fields, due to the weather, are unusable from approx Nov 15th – April 15th - that is 50% of the school year -and if I understand correctly , the turf field that is under consideration today would utilize approx 1.5- 2 acres of a 110 acre campus and would not replace any of the grass fields that are currently in use - so when completed, the turf field would take up less than 2 % of the total acreage of the campus and would account for at most 12.5% of the playing field space at MGRHS with the other 87.5% of the playing fields still natural grass (and dirt)-For me- It's all about the kids- I think we owe it to the families

of Williamstown to build this turf field, and give them the opportunity to get outside and play - year round - Thank you for your kind consideration !

26. Keith Taft: Against (did not speak when was his turn, emailed for comments):

The injury rate is much higher for artificial turf and grass takes out carbon dioxide as well as toxins and pollutants from the air and replaces it with oxygen.

27. Jonathan Igoe: For (did not speak when was his turn, emailed for comments):

I urge you to move forward on a turf field because of the opportunity it offers students and members of the community throughout the year to play sports and to be active. I have expressed this opinion already and firmly believe two things:

1. Williamstown needs more field space
2. Turf fields are the most usable and flexible spaces for the greatest number of people

Every fall and spring for the past 16 years I have lined the soccer fields at WES. We compete for space with soccer and lacrosse in the spring, and have poor quality grass that is overused by students and families year round. Students love playing on the turf at Williams because it is a surface that works, not only in rain, ice, snow and cold weather, but also in a way that makes students feel more confident in their abilities. We sometimes have shared the turf space at Williams with other groups and seeing a hundred youth athletes working out on a turf field in conditions that would normally prevent play is inspiring.

At this moment, on December 13, there is a group of high school students, wearing masks, playing soccer on the WES fields. The fields are muddy. They have been overplayed on by students at WES, by children from the Youth Center, and, like this group, students from the community looking for some way to get outside and play in the months from November to March. Once the snow falls, it will no longer be possible to play on these fields, whereas a turf field could be plowed and made usable. Please support our children and make use of this opportunity to approve a turf field.

Motion to adjourn at 6pm by Michelle, seconded by Curtis, passes 7-0.

Notes taken by Steven Miller (Secretary)

Mount Greylock Regional School District School Committee

Location: Zoom Remote Meeting

Date: December 14, 2020

Time: 7-8 pm Join Zoom Meeting

Special Open Session/Phase II Turf Forum

Agenda

- I. Call to order
- II. Mission: At Mount Greylock Regional School District, our mission is to create a community of learners working together in a safe and challenging learning environment that encourages restorative based processes, respect, inclusive diversity, courtesy, integrity, and responsibility through the high expectations and cooperation resulting in life-long learning and personal growth.
- III. Presentations
- IV. Questions from the School Committee V. Motion to adjourn

Called to order at 7pm

Present: Christina, Julia, Michelle, Carrie, Curtis, Steve, Jose

Also present: Jake, numerous members of the community

Heard from community earlier (5pm meeting), John Skavlem and Stephanie Boyd will present on two general viewpoints and for the committee to ask questions. Fifteen minutes each then questions.

Stephanie: Thanks for opportunity to speak and commitment to the issue and all the work. Question trying to address is whether we want artificial or natural turf, been thinking about this for awhile, might not be the question want to address. Share my thoughts and framework on how to move forward, spotlight some issues community has had.

Fundamental question: need a strategic infrastructure plan for athletic and physical education programs for next 10-20 years, rational approach with well-crafted plan.

Lot of new people since last conversations, in the midst of the pandemic, uncertain financial future, drops in enrollment. When I look at issues look at pros/cons. Financial, performance, health, environment, community desires/needs. Shows map of fields.

Traverse said artificial has a lower cost per playable hours. Important to use 2250 as playable hours for artificial vs 500 or so for natural. Need to look at present value dollars. Using consultant numbers (I think understate artificial and overstate natural). Over 25 years artificial costs about \$200,000 more, but with net present value more like \$400,000 over life-time. Should recognize paying a significant premium. Cheaper to maintain artificial but more to put in.

Playability: FAQ: brushing is required once every 100 hours or about once a month, expect 25 hours per week. All year that is 1300 hours, more realistic with school year 650 – 900. Can also go thru how many hours each sport plays. Get around 800-900 ideally. Now cost per playable hour grass is cheaper.

Environment: pictures of nearby field well maintained, these are crumb rubber. Estimates in Europe that each year a field loses 150 pounds of pellets.

Speaker earlier mentioned study last week on how these bits of crumb rubber are killing wildlife.

PFAS chemicals harmful if in water supply. No testing done to make sure these products are not included, no third party validation, no certification. It may not be there, but certification given is not proof.

Talked to supplier about recycling. Said 100% recyclable, but haven't sold such a field, no market for such.

Can do mitigation strategy. Can get rid of crumb rubber and use Brockfill, about \$115,000 more. Possible environmental problems. Could design a system that keeps material on field (\$100,000). Purchase a more recyclable field (another \$80,000). Additional costs around \$300,000. Net difference now \$700,000 to \$800,000.

Natural grass impact: greenhouse gases from mowing, water, fertilizer. Will have natural several fields we will be maintaining anyway. Water is not as critical environmental issue in New England. Propose use sustainable growing methods.

Mass DPH: wash hands after using fields before eating, not for passive recreation (no lying / sitting), heat issues, take off clothes after use.

What do we do with all of this? What is a community solution to the fields issue? Every person who spoke wants to do what is best for kids / community. No debate on that, often difficult to figure out what is best. Value different things differently.

Current solution: condition of existing infrastructure, sports/programs supported, maintenance costs. Then look at future needs: what is the population in 10 years, visioning opportunity. Alternative analysis: how to decide among competing options, community involvement, prioritizing plan. Finally comprehensive financial plan: capital, operating costs, funding sources (fundraising, tax revenue, state, gift).

John: Thanks all. What I did is I took what Joe (Business Manager) did for October 16th, he presented to the school committee to update as to what has happened since Phase II last met back in December 2019. He did a really nice job, used that, embellished in some areas to give more background on the process.

Background: Williams pledged \$5 million for capital needs outside the building project back in 2016, when not used in endowment and grows. At time objective was to deal with MSBA project limitation (fields, parking, district offices).

2017: Williams gift committee established. Part of committee (me, Carrie, Al). Working with Jones Whitsett Architects to look at options. Former grounds director part, so were principal, athletic director. Fields, district office designs proposed, included at the time was an artificial turf. The artificial turf goes back to the original design proposals more than 3 years ago. At the time was regionalization, transition committee established, at the end of the year new architect Perkins Eastman hired.

2018: Transition committee takes over capital gift responsibility. Carrie and Steve are on. Perkins Eastman did design concepts and presented: district office (with garage for storage, cross country ski, bathrooms). Had field options contending with title IX, ADA, part of proposal artificial turf. Working closely with transition committee, which established Phase I committee (building) and Phase II (fields / athletic facilities). Idea maybe one comes first, probably building, fields maybe later, lot of demolition occurring on campus grounds. That November the Mt Greylock School Committee was organized. Went back and looked at the priorities.

2019: Phase II committee: representation from school committee, athletic, coaches, students. Had a review from Traverse Landscape Architects (sub-contractor), reviewed proposals which included artificial turf. In the process in all the meetings b/w January and making a recommendation we looked at the fields, talked to the college, came to conclusion that artificial turf best. In May school committee took recommendation and authorized bids (ADA accessibility, new softball field, new track as add-alternate, artificial turf). Decision made to hold bid as not ideal to bid going in to summer at a cost could afford, so put off. Public forum held in July when concerns expressed by community. In the RFP: 3 reputable bidders, all 19-22% over. Each of them came on budget for at least one aspect. \$2.3 million estimate came in around \$2.8 million; one bidder made a \$750,000 estimate instead of \$250,000 for the softball field thinking that was an artificial field as well. Did include an add-on for track. Slide on athletic team and physical education participation. PE impact is huge, that is what made a big difference in the sub-committee about the advantage of artificial turf; not just athletes, convinced us this is the best way to go.

Since then lot of talk, artificial vs grass. Issue for us is playability. How allows kids to get on the fields at all different times. One of our teams had to play all of their games at MCLA on a first generation turf field, not as safe as the newer fields. Safety has always been our priority. When games get rescheduled costs time, money, burden. Turf available immediately, grass can take a year or more (seed best over sod). Saving water and other regular maintenance, can get LEED points.

Cost per playable hours: we had an engineer look at and determine that artificial is cheaper per playable hour.

Revenue generation: on an artificial turf: can charge for use of it. If we go to MCLA or BCC there are costs.

Sub-committee recommendation has remained consistent and unanimous throughout the years.

Want to respond to some issues: recommended BrockFILL instead of chrome rubber due to community concerns. Disposal issue eliminated (pellets amend soil), warrantee goes from 8 to 10 years. Expect field to last longer, we say 12, college thinks 15 if not more. MtG can lead by example: none of these fields in our region, being built elsewhere. Can require certification from manufacturers on artificial turf grass is PFAS free. Only non-recyclable is grass mat backing, expect in the future.

Turf costs: about \$500,000 for grass and \$1,000,000 for artificial. Both have drainage. Grass more to maintain. Depends on conditions. Internal vs external labor.

Both have renewal costs of around \$500,000; range from 10-15-20 years depending on usage, the two are comparable.

Regional school districts usually fund thru E&D, capped at 5%, right now have \$1.1 million. Could establish a stabilization fund (need town approval, put money aside each year to fund future). We have money for these right now.

Current fields update: Tim Sears has done an excellent job on the fields. PJC Organics studied last year, poor was the grade for all fields, gave recommendations and are following, look better, also a matter of maintaining, but have benefited as the fields haven't been used much since fall. Irrigation important, no water out there, poor drainage. Lot of clay in soil, always been a problem.

State of gift: was \$5 million, \$1.8 million in growth as of June 2020.

Time really is now, been nearly 5 years, resources are available. We can do the full scope of this project as recommended last December, bid environment is favorable, some people are desperate for work. Students on committee emphasized the advantages, the impact on PE, on the Williamstown soccer club, fewer injuries. The Greylock Way: Responsibility Perseverance, Integrity, followed these for five years, hope we can get this done.

Christina: Opens up for questions

Jose: Group met when communities across MA looking at moratoriums on artificial turf. Were you aware, were you engaged with any of these communities?

John: Lindsey did a survey, number of artificial fields being done was increasing for similar reasons as to why we were looking at it. Relied on expertise of our architects, Williams College.

Stephanie: Lot of debate in many communities on artificial turfs. Recently issues at BCC as in jurisdiction of conservation committee (we are not); a shortcoming of our environmental regulations is that we are not. Even though doing BrockFILL could be some issues in getting in to the water. Not sure how this will be received by regulators of this project. I think communities that have a hard time... Some places looking at banning, better products. All want our kids out and playing. Everything we do has an environmental and financial cost, have to teach our kids how to have a community conversation on

difficult items. Molly talked about this: all of us sitting down and listening to each other. Instead of working together we're pitting us against ourselves.

Christina: Where were the increase in resistance? Rural? Suburban?

Stephanie: Saw database in CA for lead, whether growing faster than grass....

John: misperception about Traverse is that they are artificial turf only, Williams and other districts would not be building if they had safety concerns.

Stephanie: No one debating benefits of turf, can play in winter, what the question is on the cost.

Julia: Reiterate Jose's gratitude for the two of you and public comment, exceptionally valuable. Appreciate the point that Stephanie made that no one is debating benefit of playable field, trying to understand costs that come with. Stephanie: did NPV for natural grass vs turf: how that natural field cost was calculated – does it include fixing irrigation, sustainable practices, or was it?

Stephanie: Used numbers of Phase II sub-committee, does not include irrigation as I don't have a number for that. Does include fairly high \$35000 annual maintenance, and some costs after a few years for replacement.

Julia: For John: what drives natural grass replacement.

John: Got an update from architects. The challenge is doing apples to apples; performance grade natural grass to be comparable. Jim Easton maintains a golf course; cannot make too thick. If just did performance grass would limit to games only not practices, not let PE go on it, cannot have revenue generated on it. No field being sacrificed. We all love playing on grass, gives ability to play more and PE, can play at new times. Issues with irrigation. Demand on wells high due to fire suppression for buildings, possibly less water available now. If don't irrigate risk investment.

Michelle: Irrigation same for both fields. Is there a significant cost difference? Regardless need irrigation system as what have is not great. Feel that is level for both. Trying to understand for myself, if -2 degrees outside that we have a turf field that we've plowed we would have kids outside. As an elementary school teacher wouldn't take kids out. Feel going really far in one direction, trying to pull out what is realistic. Will we bring PE out in 10 degrees? High school kids do not dress properly. Having a hard time seeing field used in all seasons. Why would we need to completely replace? If only grass option is field that can only be used for games not realistic, not a Div-I school. PE should be primary target: that's all students. Lot of questions. Say always playable but maintenance free, have to do some to have playable. Have some concerns on BrockFILL or otherwise leaking out. Cleanup, replacement. Biggest concerns cost. Not sure if have questions, these are my thoughts. Can't see how artificial turf will pay in fees.

John: fees to help with costs, not saying play in winter, really getting on to field at end of shoulder seasons (when rained out / snow early). Can get out now when other fields are too wet. Don't need irrigation for artificial turf.

Stephanie: Demonstrated savings, grass fields need to be improved, one thing to help improve them is an irrigation system, can take savings and build irrigation. Would advocate infrastructure.

Jose: For John: Work of Phase II: What was the warrantee as part of purchase? In brief reading I've done a number of cases when artificial turf defective, ranging from 30% of fields in NJ defective....

John: It was 8 years for crumb rubber and 10 on BrockFILL. Have benefit of Williams (have already replaced one), have used Clark companies, issues with Weston field, undulated some, Clark came out and fixed without charge. Know about maintenance, talked The emphasis was to respond. We are excited about BrockFILL. Crumb rubber goes away, disperse on other fields and amends them. Trying to get kids out there safely, consistently, Not just athletes, can benefit all kids. That's what moved the committee.

Julia: apologize, might be a longer question, gets to process. Struggling with, how'd we get here, flawed or not it is where we are and what do we do? Questions raised around voice. Stephanie: suggested a way we move forward. John I know the Phase II received request from school committee on how to move forward. Stephanie's proposal looks reasonable, what has already happened John?

John: Tried to go thru what has gone on, the number of different sub-committees, school committees, architects, Had a forum in July. Held very open meetings for Phase II, let everyone speak at those.

Julia: I look at the minutes, January 2019 reference to a strategic plan need for infrastructure. Did that happen? How does this fit in with long term plan?

Stephanie: We've struggled with this a few times, been asked a few times to be on a new committee, one disbanded, pandemic, All feeling a bit uncomfortable about process, not being critical about people involved. Sometimes takes a few runs to figure out what needs to do. At first I didn't think much about artificial turf but then as looked more.... Have had so many changes in the last couple of months.... If the decision was made would have to live with it, but we know the school population is going to be dramatically different, changes from pandemic, New people on committee. Take a deep breath, step back, recognize community wants to be engaged, need to engage at the beginning not the end. Haven't looked seriously at what grass can do / what will take to make it functional, and trying to pick between. Need to step back, not to say work done isn't valuable,

John: Push back, what would be the maximum benefit to the most students, been identified since 2016 as one of the priorities, dealing with the fields. Have this incredible school, all these wonderful facilities, and our fields are an embarrassment. School recognized this need all along. There are 70% of kids doing some type of athletics, PE / wellness key part of curriculum here (more so than other schools). Been evaluating for 5 years.

Michelle: I hear that there has always been a need, basic question: did we or did we not explore a grass field and the cost? Why/why not? Did we get a quote for a grass field.

John: Explored, didn't get a quote as would cost more money to get a quote / bid, same people who build artificial do natural, can respond to bids in whatever way they want to build.

Michelle: What led to dismissing grass field?

John: Playability. Unanimous agreement of committee throughout on what this would provide for our kids.

Michelle: Just trying to understand why only got a quote on artificial. To get a quote would cost more money and does not solve the problem. We have been very conscious about money (hence portable bleachers, goal posts, ...). Idea was these things work in tandem. Have ability to rotate between them, artificial grass field provides dependability / consistency for games.

Stephanie: May have heard proponents of natural grass say it was not considered seriously. There are some experts who work in this area who would provide different ideas on how might build / costs / performance / maintenance would be. Do not think need two sets of bid documents, but could have gone farther about understanding trade-offs.

Christina: Thank you both for coming and presenting.

Question in chat, said to email the committee.

Motion to adjourn by Curtis, seconded by Jose, passes unanimously.

Meeting adjourned at 8:20pm.

Minutes by Steven Miller (Secretary, School Committee).

Acting Director of Pupil Services Update:

- Program Quality Assurance Tiered Focus Monitoring Self-Assessment
 - Tiered Focus Monitoring is ongoing
 - Self-Assessment submitted in October 2020
 - TFM Orientation to MGRSD 2/8/21
 - TFM onsite review in April 2021
 - TFM Office of Language Acquisition
 - ELLs, Opt-Out students, FELs, ELs with Disabilities, parents who need translation or interpreter services
 - Self-Assessment submitted in December 2020
- Circuit Breaker funds being disbursed
- 274 & 298 Grants submitted
 - 274 Target SPED Program Improvement grant- support programming
 - 298 Early Childhood Targeted Programming
- New Speech & Language Pathologist started 12/14/20
- COVID19 Special Education Learning Plans In October/ November
- Hosting Parents Right to Know in Winter 2021

2020-2021 Influenza Vaccine Requirement

From the August 19 Massachusetts Department of Public Health Press Release, available at <https://www.mass.gov/news/flu-vaccine-now-required-for-all-massachusetts-school-students-enrolled-in-child-care-pre#:~:text=Students%20will%20be%20expected%20to,or%20religious%20exemption%20is%20provided.>

- “Students will be expected to have received a flu vaccine by December 31, 2020 for the 2020-2021 influenza season, unless either a medical or religious exemption is provided.”
- “Also exempted are K-12 students who are homeschooled and higher education students who are completely off-campus and engaged in remote learning only.”
- “This new flu immunization requirement to enter school in January is in addition to existing vaccine requirements for all those attending child care, preschool, K-12, and colleges and universities in Massachusetts.”
- “Elementary and secondary students in districts and schools that are using a remote education model are not exempt.”

More information is available at:

<https://www.mass.gov/info-details/flu-information-for-school-administrators-and-childcare-professionals#flu-vaccine-requirement-for-ma-students>

2020-2021 Influenza Vaccine Requirement--Update 3:20 Today

*“The MDPH Immunization Division had set the deadline of December 31, 2020 for students to receive a flu vaccination unless they have obtained a medical or religious exemption. **The deadline has been extended through February 28, 2021.** Schools and school districts have authority to implement vaccination requirements at the local level, and may set policies appropriate for their communities regarding the deadlines for submitting documentation of vaccination. Schools and school districts should make every effort to ensure that families are connected to school nurses for resources for facilitating access to vaccination, if unable to receive through their primary care provider. Schools and school districts should send a reminder out to parents of this requirement as soon as possible.”*

MGRSD Policy

JLCB - IMMUNIZATION OF STUDENTS

Students entering school for the first time, whether at kindergarten or through transfer from another school district, will be required to present a physician's certificate attesting to immunization against communicable diseases as may be specified from time to time by the Department of Public Health. The only exception to these requirements will be made on receipt of a written statement from a doctor that immunization would not be in the best interests of the child, or by the student's parent or guardian stating that vaccination or immunization is contrary to the religious beliefs of the student or parent/guardian.

SOURCE: MASC August 2020

LEGAL REF.: M.G.L. [76:15](#)

CROSS REF.: [JF](#), School Admissions

Note: Due to the COVID-19 pandemic, The Commonwealth of Massachusetts has updated the Massachusetts School Immunization Requirements to include a documented seasonal dose of the Influenza Vaccine. This requirement will remain in effect until rescinded by the Governor.

Policy available here: https://z2policy.ctspublish.com/masc/browse/mtgreylockset/mtgreylock/JLCB/z2Code_JLCB

Amended Student Learning Time Regulations

Mt. Greylock Regional School District
December 22, 2020





In Person Education

In Person Education has been a foundation of the Commonwealth since the establishment of the Commonwealth

Chapter V, Section 2 of the Constitution of Massachusetts- The Encouragement of Literature, etc.: “Wisdom and knowledge, as well as virtue, diffused generally among the body of the people, being necessary for the preservation of their rights and liberties; and as these depend on spreading the opportunities and advantages of education in the various parts of the country, and among the different orders of the people, it shall be the duty of legislatures and magistrates, in all future periods of this commonwealth, to cherish the interests of literature and the sciences, and all seminaries of them; especially the university at Cambridge, public schools, and grammar-schools in the towns; to encourage private societies and public institutions, rewards and immunities, for the promotion of agriculture, arts, sciences, commerce, trades, manufactures, and a natural history of the country; to countenance and inculcate the principles of humanity and general benevolence, public and private charity, industry and frugality, honesty and punctuality in their dealings; sincerity, and good humor, and all social affections and generous sentiments, among the people.”

The Boston Latin School, the Cambridge Rindge and Latin School, Hopkins Academy, and Westford Academy are among the ten oldest public schools in the United States of America.





In Person Education

- It is clear to everyone involved that in-person education is the superior means of providing education to the vast majority of students.
- It is likewise clear that absent in-person instruction, some children will experience little to no education.
- The medical community, including the Parabola Project, has been clear about the dangers that exist in not holding in-person education, including a host of negative potential outcomes for children and families.
- Communities small and large would not spend millions, tens of millions, or hundreds of millions of dollars if in-person educational experiences were not vital to children, families, and communities.
- We continue to work through a legally voted and binding Memorandum of Understanding to find safe, effective, means of providing in-person instruction while maintaining the health of our students, staff, and community.



Time on Learning Regulations

- 603 CMR 27.00: Student Time on Learning
 - 900 structured instructional hours annually for elementary level students
 - 990 structured instructional hours for secondary level students
 - Seniors have a lesser requirement--graduation may be held up to 12 days prior to the end of the school year
 - 603 CMR.27.08 passed in September of 2020 allowing for special considerations related to the Covid-19 pandemic
 - Includes allowances for alternative learning models
 - Requires Hybrid and Remote models of instruction

from: <https://www.doe.mass.edu/lawsregs/603cmr27.html?section=08>



Amendments to Student Learning Time Regulations

- Passed by the Massachusetts Board of Education at their monthly meeting on December 15, 2020
- Amends 603 CMR 27.00 on an emergency basis due to academic and mental wellness concerns for students
- Focuses on ensuring that students have 1) daily contact with their teacher/teachers 2) daily contact with other students
- Amendment goes into effect on January 19, 2021
- Advisory may be found here:
<https://www.doe.mass.edu/commissioner/spec-advisories/>



New Standards (minimums)

- Districts and schools operating a hybrid learning model must provide students with access to at least 35 hours of “live instruction” over a 10-school day period, averaged across the grades in the hybrid model (excluding pre-kindergarten and kindergarten). Live instruction means the combination of in-person and remote synchronous instruction.
- Students must have an opportunity to interact with educators each school day, including a required daily “live” check-in between students and educators.
- Districts and schools operating a remote learning model must provide students with access to synchronous instruction each school day; and
- Districts and schools operating a remote learning model must provide students with access to at least 40 hours of synchronous instruction over a 10-school day period, averaged across the grades in the remote model (excluding pre-kindergarten and kindergarten).



New Standards at MGRSD

- On average at Lanesborough Elementary and Williamstown Elementary School, 31 hours of live, synchronous instruction are offered between core and specialist classes over a two-week span.
- On average at Mt. Greylock Regional school, 43 hours of synchronous instruction are offered over a two-week span.
- Our state report indicates that the 37 average hours of synchronous instruction over a two-week span is an acceptable number of hours in our current remote setting.
- Pre-kindergarten and kindergarten are excluded from this calculation.
- The Remote Academy is excluded from this calculation.



Continued Work Ahead

- Clarifying expectations for the Remote Academy
- Consideration of a move back to the first-two-weeks of school remote schedule for elementary students
 - Particularly if we remain in remote-instruction mode
- Resources for mental wellness assistance based on BESS screener and family referral
- Work to create more online opportunities for students and staff to just have fun, share, check in with one another, and just to talk/maintain connections
- Continue to revisit the MOA and safety precautions to find pathways that make sense now and for the remainder of the year
 - Including the value/necessity of our original Wednesday approach
 - Further considerations of lunch, student support centers, increasing access for all students, and for students who most need access to school

Student Learning Time Regulation 603 CMR 27.00 Updates:

Hybrid learning model. Hybrid learning model means students alternate between in-person learning with safety requirements and remote learning. Hybrid learning models shall include the following requirements:

(1) Effective January 19, 2021, districts and schools operating a hybrid learning model shall provide at least 35 hours of live instruction over a 10-school day period, averaged across the grades in the hybrid learning model.

Remote learning model. Remote learning model means student are educated remotely. Remote learning models shall include the following requirements:

(1) procedures for all students to participate in remote learning, including a system for tracking attendance and participation;

(2) remote academic work shall be aligned to state standards;

(3) a policy for issuing grades for students' remote academic work;

(4) teachers and administrators shall regularly communicate with students and their parents and guardians, including providing interpretation and translation services to limited English proficient parents and guardians;

(5) effective January 19, 2021, districts and schools operating a remote learning model shall provide synchronous instruction each school day; and

(6) effective January 19, 2021, districts and schools operating a remote learning model shall provide at least 40 hours of synchronous instruction over a 10-school day period, averaged across the grades in the remote learning model.

FY22 Budget Events

Factors:

- What will the school year look like?
- Local, state and federal budgets
- Our contracts

Finance Subcommittee Meetings:

- January 7, 2021
- January 14, 2021
- January 28, 2021
- February 11, 2021
- February 25, 2021
- March 11, 2021
- March 25, 2021

SC Meeting Dates:

- January 14, 2021
- January 28, 2021
- February 11, 2021
- February 25, 2021
- March 4, 2021: Public Hearing / SC vote on budget

Town Finance Committee Meetings:

- TBD, ideally we give a brief update early and then a lengthier full presentation in mid-March (after SC approval)

Town Meetings:

- May 18, 2021: Williamstown Town Meeting
- June 8, 2021: Lanesborough Town Meeting

Per our regional agreement (and state law), the school committee needs to adopt a budget for its member towns at least 45 days prior to the earliest town meeting of a member town. The regional agreement also has the provision that school committee budget adoption happen no later than 45 days prior to May 14th. With all of that taken into account, the school committee this year is bound by the regional agreement to adopt a budget no later than: Tuesday, March 30.

The following are touch points during budget development (not necessarily in this order):

- Request and receive School Council priorities in line with School Improvement Plans
- Receive input from both towns regarding their financial outlooks
- Receive health insurance rates for FY22 in January from BHG
- Receive early FY22 Cherry Sheet estimates, updated as state budget cycle goes
- Coordinate draft budget reviews with all stakeholders
- Set tuition rates for FY22 (SC decision)
- Set FY22 School Choice slot openings (SC decision)

Mount Greylock Regional School District School Committee Finance Subcommittee

Location: Zoom Remote Meeting

Date: Thursday, December 17, 2020

Time: 4:00 PM Join Zoom Meeting

Open Session Agenda

- I. Call to order
- II. Approval of December 3, 2020 meeting minutes VOTE
- III. Review of warrants A. Payroll B. Accounts Payable
- IV. Use of the WES Renewal Fund for an HVAC repair (recommend to School Committee) VOTE
- V. Perkins Eastman proposal discussion
- VI. Mt. Greylock Renewal Fund discussion
- VII. Other items for discussion not reasonably anticipated by the chair 48 hours before the meeting.
- VIII. Motion to adjourn

Present: Carrie, Michelle, Steve

Also present: Jake, Joe

- I. Called to order at 4pm.
- II. Motion to approve the minutes by Michelle, seconded by Steve, passes unanimously.
- III. No additional items to add to the packet. There was one check that needed to be pulled back, Brenda was on top of that. Brenda is taking a vacation soon, practicing what happens when someone is gone for awhile, having people swap places.

Question: what is a PG sprayer? Pathguard fogging solution, spent a lot of time over last 6-8 weeks trying to find the most environmentally and human friendly way to disinfect air, so we can look at cycling rooms thru multiple groups of people with staff feeling comfortable. Product that rose to the top has been used by many local groups. Citric acid based disinfectant that can be put in a special fogging machine. Produces tiny micron droplets that can remain suspended in air, can take care of covid / other issues. Purchased three units, one for each school, received last week, custodians received training on Monday, excited to gradually start putting to use. Should yield significant benefits in terms of confidence of our ability to clean the air. This will come out of a grant we have that must be spent this calendar year on covid items. There is one more cycle, and we can journal entry some items to make sure we round it out. We are well in excess of the total with eligible expenses. Nothing was signed, timing of when things were scanned and when signed; Donna and treasurer have signed. FinComm does not need to sign, reviewing.

- IV. Use of WES renewal fund for HVAC, brought to FinComm so can bring to school committee. Packet has a copy of the WES fund agreement, different than the MtG capital gift. Per the regional agreement, anything over \$5000 paid for by the town if a building expense. Is this a building expense or a town expense?

For LES would have to go to the town, but as the gift exists to WES from the college the practice has been to use that gift and not go to the town. Once spent then go to the town.

Does the town or the school pay and then get reimbursed by the college? Payment is either reimbursement to the town or direct payment. Have used the second clause, we have the college pay bills directly. Business Manager gets approval to spend money from the fund, have the work done, bring the invoice back to the school committee so that the school committee can sign off on it, then send to the college and the college pays directly to the vendor.

What are the balances? In the endowment / principal / spending. Principal as of end of fiscal year (5 months ago) was \$1,625,918. The spending account balance, portion the college pulls out to make sure spending without needing to liquate is \$51,187. Invoice is around \$21,000 so falls in the spending amount. This falls under Rob Wnuk's purview, has gone out and followed best practices to get the best price available from market now. Anything between \$0 and \$10,000 is open ended, no significant restrictions. Up to \$50,000 should get three quotes and choose best bidder, anything about \$50,000 put an invitation to bid, more rigorous process, length of time for gathering / selecting bidder based on laid out criteria. This falls in the middle. Will double check that we did get three bids.

Motion to recommend to the school committee for approval conditional on it having received three bids. Moved by Steve, seconded by Michelle, passes unanimously.

Technical question: does it need to be moved and seconded again at the school committee? From looking at Roberts rules looks like it might be considered as moved and no need to move and second.

- V. Perkins-Eastman Proposal Discussion: Additional info in the packet added, including note from John Skavlem that one bid would not have been over if not mis-interpreted and thought softball field was artificial turf as well.

Perkins-Eastman was architect for big building project (school), then became architect for projects related to the gift. When they first bid on this work, the hope was we would minimize costs by having PE handle the building directly and just be the architect of record, make sure coherent in the scope of the larger project for the fields related work. That work started. Traverse Architects became the sub-contractor that did the primary work for the district for the fields (Phase II work). PE mostly out of the picture.

When the bid did not go as hoped by the district last fall, according to PE they were clear about perhaps should have a different approach to understanding what the community

wants, scoping the work, getting out to bid. Conversation started b/w admin and PE on what is a better way to go about this as will be more challenging than initially thought. This is when PE went back to a renewed capital planning, could rebid with value engineering, wide variety of things, let us know what you want.

Is this reflected in the packet that spells out options? PE had higher level conversations with admin on bigger picture with community involved / forums / evaluation of options, taking a step back from getting out to bid without delay. When started to look like there would be a step back taken then PE said you are our client you let us know what you want. We can come and do surveys of community and conversation on options.

We then went dark for awhile, then Business Manager went back with the request from the school committee about how can we get the same project out to bid with some value engineering done first. PE's proposal reflects that. Follows what had been loosely proposed by the admin last fall, which has PE having a more direct role in process / value engineering, working with Traverse, being point of contact, making sure we doubly dot i's and cross t's. Walking us thru a process to get us to bid. That is what their proposal from November looks like. We still within our contract with PE have the construction administration portion that comes after the bids are accepted and a contractor comes in, PE with that contract still has that portion of that contract, that is work we can do, accepted a proposal for and we will happily do. We are inserting a revised approach that is a redo and a slightly different do into the middle of that, still have the construction administration portion as they monitor what is happening. That's where we stand with them.

They've been working with us for years, if he were us he doesn't think an objective third party group that looks at spaces doesn't cost significant amount of money (\$5k or \$10k), put that in front of us before we do that rebid to build more of a coalition of what we are doing and way. We have 120 acres of campus, almost unheard of, massive opportunity, would do that, doesn't take too long, over a few months. Can put out nicely structured surveys to get info, look for a 5-10-20 year plan for the campus.

Did ask about a discount. PE feels like they did what they were asked, Traverse did. Provided feedback that was very responsible. Used the cost estimator to get current market costs. Put out a request for proposals in the way it should, does not feel it should further discount.

Carrie: to take a few months to do what? Not to keep going over what we've been doing, but to come up with a long term plan? Something that hasn't been discussed?

Joe: I think this goes back to whether or not the work done to create the priorities, that work from 2016 – 2017, should that be revisited that creates a renewed sense of why these are the priorities, how fits with an evolution of the campus over the next 5-10-20 voices, allows all voices to be heard before bid again.

Steve: If do this, when would construction begin and end?

Joe: depends on the timing. Best time to get bids would be over the next few months. Want people to bid while not fully committed for the construction season ahead.

Carrie: would lose that window if we do this other thing, and we would still be obligated to the deadlines for ADA compliance and Title IX.

Joe: ADA is April 2022. Asked Dan Colli, who said can probably push thru the construction season due to covid. If try to do ADA compliance now and do not do anything else, then a decent chunk of that ADA compliance would have to be torn up and redone as part of the bigger project (softball, baseball, ...). New field and track would need to run solid paths that are accessible. Would do a lot of work to create ADA compliance for existing campus and then when do larger project would have to do a lot of new work and tear up work done. Doable but if know going to do something different a year later is this a good use of funds?

Michelle: Instead of splitting the project that way can we do ADA / Title IX and then the field. In my opinion the field is the sticking point. Do we do the turf field? That's the big question. No one asking turf on softball, just on soccer/lacrosse.

Carrie: What Joe was saying is that if we do a new field that becomes the place where we need accessibility, if do Title IX now but do not know about future field we have to make John Allen accessible, but if do a new field then we don't. We need to decide on a turf field before we decide on compliance. If say no new field then make all have compliant. Is that correct?

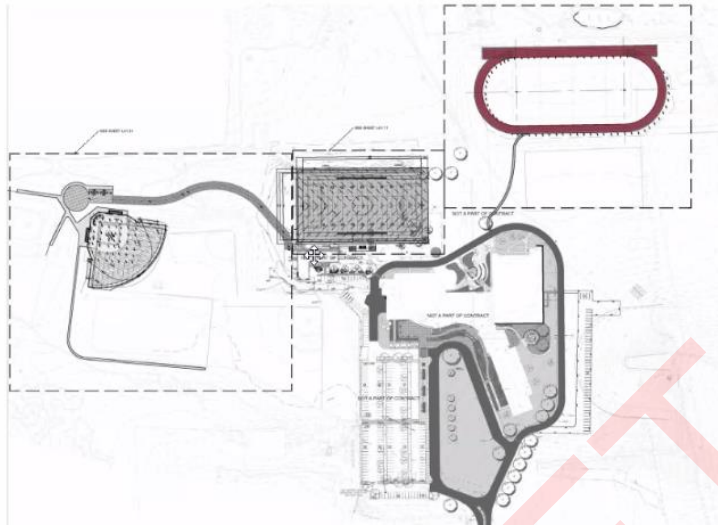
Joe: Kind of.

Michelle: Mentioned stuff on softball field that is ADA, might have to outfit JA with more accessibility, would just be another accessible field, as a special ed teacher not a bad thing, should make everything accessible, not a waste of money.

Joe:



Fall 2019 RFP



- Aug-Sep 2019 RFP to bid
- 3 reputable bidders
- All 19-22% higher than expected

Primary goals:

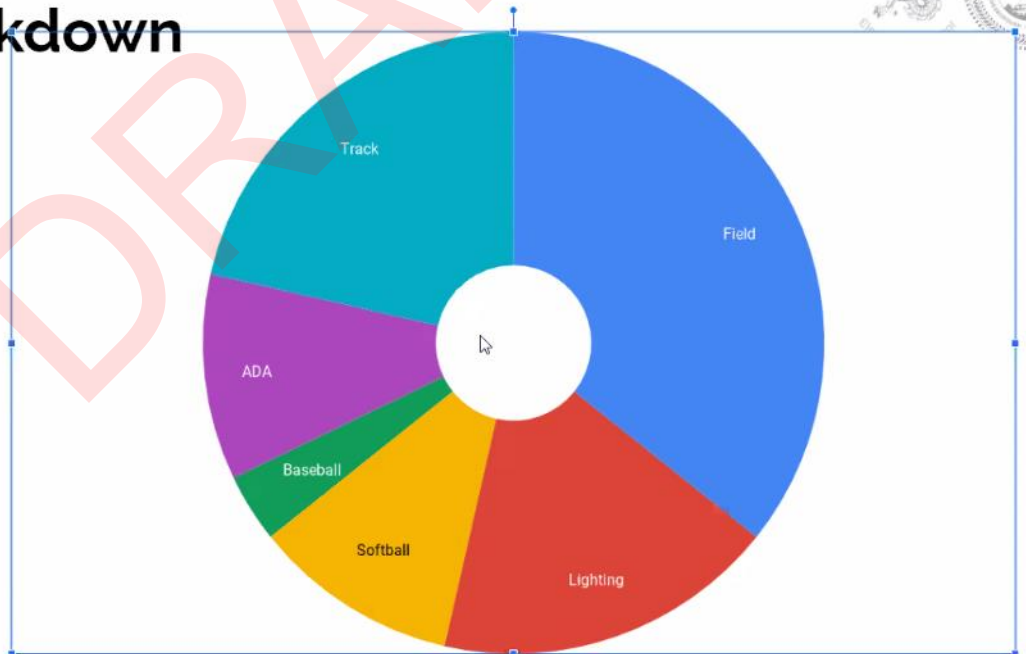
- ADA: roads, parking, and walkways
- New field (turf) in new location
- Lighting for new field
- Softball field revamp (Title IX)
- Baseball fields safety upgrades
- Portable bleacher system
- \$2.3M estimate => ~\$2.8M bid

Add alternate:

- Track (6 lane)
- \$450K estimate => \$550-850K bid

If do the field on the left now, might not necessarily be required but good to have.

Breakdown



Above shows project costs. Would be \$700,000 project. That is one that could be done right now

Steve: But if doing the other fields later ...?

Carrie: Is a larger project more desirable?

Joe: Regular logic says yes. Can ask.

Carrie: Recommendation for the committee?

Steve: As we have so many new people I think it is good to have it discussed as a full committee.

Michelle: Forum useful, have a few more questions. This is why thought of separating. No brainer – have to do ADA / Title IX. Giant project of an artificial turf is a big decision and a lot of money, want to make sure I feel comfortable. After reading the many strongly worded emails, I have some questions for Lindsey, need to go thru some stuff.

Steve: Suggest we have a list of questions from committee members so can have information....

Michelle: Problem is often one question can lead to another.... For me want to talk to the athletic director. Feel like another long term study on fields falls under her wheelhouse. Makes sense for her to make a projection on facilities. Not sure necessary to spend money on another study. We need to decide. Lot of pressure to get this done. There is a bid issue, favorable if do in the winter. Joe: how long will it take if we say go ahead and put out to bid. What process? What timeframe / timeline to stay in favorable conditions.

Joe: if accept the PE November proposal: 5-8 weeks. Once detailed design done but before go to bid, supposed to present to town as modifying over a trigger amount of our campus. Any lighting needs to be reviewed by the town, once town / school committee sign off that's when PE would put those docs out to bid for us. Would be 2-4 weeks before we could expect to get responses. In all likelihood would get same bidders as last time, limited number of companies in the area that do this work, that's the time we accept or not.

Carrie: This timing allows it to be done over the summer / ready for the fall.

Joe: Yes.

Carrie: Same process / time frame if committee decides to do all but track / field.

Steve: Agree we need to decide, worried about spending more and more money on studies. Might be useful to collect questions and answers.

Joe: What would a third party bring on planning? They would know the range of options that the district could use / utilize. Given that Phys Ed is one of the primary impacts, there are more people interested in middle / high school playgrounds with climbing walls.... These

impact everyone. That's the kind of thing a consultant would know, would know costs. While I agree that we should not keep spending money on opinions, we don't want to create a package that goes out to bid that is contentious and does not have support of community / committee and spend \$44,000 to go thru a process that didn't really want, danger of speeding things up if doesn't get to end goal.

VI. Mt Greylock Renewal Fund Discussion:

Carrie: call it renewal fund, not endowment, to distinguish. This is what WES has, money set aside to grow over the next decade. Several docs related to this in the packet. Comment submitted by Rob Abel, endowment calculator Steve developed, Williams College Investment Returns document. Question starting from Jose and others on the committee: if we put aside various amounts, what would that look like? Would the growth provide enough funding for things that need to happen?

Steve: to compare apples and oranges should remember to do a net present value adjustment.

Joe: Developed a document on investment returns. Looked at Williams College investor report for past 20 years for annualized returns. Goes over some very turbulent times. Briefly: the earlier you save and the more you save, the better in the future.

Michelle: If I look at the bids, say on the order of \$2.9 million. What's in the gift now?

Joe: \$3.6 remains.

Michelle: If we take \$2.9 million we are not at \$1.5 million. Less than a million.

Steve: Have used the gift for many things over the years: trailers, bathrooms. Some of these should be paid by the towns.

Michelle: bathrooms are capital improvement.

Carrie: \$1.5 million has been suggested, if we put that in do we have the ability to address everything that comes up? If we don't do a turf field and put \$3 million in, do we feel good about growing that? Have a lot in E&D and choice, a lot to sit on.

Steve: I'm in favor of a smaller amount and can always increase. Can we borrow money for projects and use the gift

Joe: We cannot take money and put in the stock market. I do not believe we have any way, not sure I have asked to see if we can hand to the college.

Steve: No, I'm saying that if we don't spend all the gift we can just decide not to spend more later.

Michelle/Carrie: We're just saying we commit to not touching certain amounts.

Carrie: making a statement we feel it is important to preserve some money for later.

Michelle: I think need at least a million.

Jake: Been part of many building projects. Topic around setting aside some money gets positioned as to we need to make a renewal fund to save the town / taxpayers money. Proponent of that, but things also go wrong with buildings that impact student experiences. Things go wrong that can impact teachers' ability to do job. Or staff. Important to talk about this in context of not always going back to member towns for capital improvements / renewal. Important foundational piece that if something goes wrong, impacts ability to support rich education.

Michelle: This is my concern in spending all this money on a turf field and then again in 10 years for replacement, what if something goes wrong.

Carrie: Installment cost is \$1.2 million, replacement about \$500-600,000. Purpose of looking at the numbers

Joe: looked at big items: Major long-term renewal costs:

Roof: \$3-6M in 15-20 years,

Floors: \$1-1.25M in 20-25 years,

Windows: \$1.5-1.75M in 15-20 years

(All in current dollar values and assuming significant one-time replacement comparable to our currently new roof, floors and windows.)

Agree with Steve that need to look at net present value, also need to look at technologies (can add stuff to roof to give it more years). Flooring is new, not sure how long will last. Windows....

Michelle: What are your thoughts?

Steve: I want to wait to see.

Carrie: I agree with Steve, but to me a million is the low end. If we don't do the track then a lot more money available. Important to protect. If that means we cannot do a track without waiting / fundraising, then that is what it means. My hope is that we can do a turf and track and have a million to set aside.

Steve: I'd be happy to see that as well. Had this with the administrative / multi-purpose building, costing a lot more than hoped.

Michelle: Afraid this will happen with turf.

Steve: Here though we did have the turf go out to bid, one bidder would have been fine if had interpreted correctly, and are doing value engineering.

Michelle: it always seems to end that way that things cost more than hope, spoke that way about the admin building, estimates were high and came in higher, everything seems to go that way, unforeseen things happen. Not 100% sure turf will pass both towns, concerned that giving to towns with upkeep costs, those are hard to swallow, that's why I need to talk to Lindsey to see if worth it.

Carrie: would you support a track but not a turf?

Michelle: need a field with proper drainage and can play on. Probably. Track also going to be used by Phys Ed. Many many more kids do track than lacrosse / soccer. Not same renewal costs. When my kids did track limited number of places where can have a meet. We're fortunate to hold at Williams College, but again have to bus kids there. Would be better to have on our campus. For community use track makes a lot of sense.

VII. Other items?

Jake: Numbers have come in: our towns are fine but county positivity rate is 3.9% so will be remote next week. Specialized programs will continue.

VIII. Motion to adjourn by Michelle, seconded by Miller, passed unanimously at 5:29pm.

Minutes taken by Steven Miller, Secretary Finance Committee



December 7, 2020

Williamstown Elementary School
115 Church Street
Williamstown, MA

RE: ERV-1 Coils Replacement Quote

We appreciate the opportunity of providing you with a proposal to replace the defective coils in ERV-1 at the above location. We propose to furnish all the labor and material needed to install the equipment listed below.

Equipment: Coils (2)
Associated materials

Scope: ERV - 1
Remove & dispose of two (2) defective A/C coils
Install two (2) new coils
Repipe into system (piping & valves)
Test for leaks
Evacuate system for 24hrs then recharge
Start & check unit operation

Cost: \$21,750.00

Electrical: n/a

Calibration: We will adjust the unit as needed to bring to correct operating specification.

Notes: We are Massachusetts statewide contractor; Vendor ID #00027073

Due to material price changes beyond our control, the above price is valid for thirty (30) days.

Jamrog HVAC Inc
194 Millers Falls Road – Turners Falls, MA 01376
ph. 413-548-9024
www.jamroghvac.com



Terms & Conditions:

All labor and materials are guaranteed for a period of one year with all applicable manufacturer's warranties in force from the date of installation. All work to be completed in a workman like manner according to standard practices. Any alteration, deviation or unforeseen circumstances from the above specifications involving extra costs will be executed only upon written orders and will become extra charge over and above the estimate as we may agree. All agreements are contingent upon strikes, accidents, or delays beyond our control. Our workers are fully covered by workman's compensation and liability insurance.

Acceptance of Proposal: The above prices, specifications, and conditions are satisfactory and are hereby accepted. You are authorized to do the work as specified.

Date of Acceptance: _____

Customer Signature: _____

November 23, 2020

Mr. Joe Bergeron
Business Manager
Mount Greylock Regional School District
1781 Cold Spring Road
Williamstown, MA 01267

Re: Mount Greylock Capital Gift project phase 2 – Add Services to re-bid and re-design the Athletic Upgrades Scope

Dear Mr. Bergeron,

We appreciate the opportunity to continue our work with the district as you continue to work thru the scope of improvements for the phase 2 of the Administration and Athletics Project. As you are aware the project was originally bid in September of 2019, unfortunately the results of that bid were not favorable due to a number of market factors which were outlined in a memo prepared by Traverse Landscape Architecture dated 9/22/19. On November 19th we submitted a proposal to re-bid the project with revisions to bring it into line with the proposed budget, however these efforts were impacted by concerns raised by the community about the use of synthetic turf and the request for the committee to examine alternatives to the standard crumb rubber infill synthetic fields.

We understand that the district is now prepared to move forward with a re-bidding scenario and that the primary field will be synthetic turf with brock fill as an alternative infill to the traditional crumb rubber, we also understand that a number of other Value Engineering (VE) options may be selected from the current list which includes:

- Change the Softball Field from sod to seed
- Removal of the outfield fencing at the softball field
- Eliminate the underdrainage system
- Eliminate all equipment out of the dugouts
- Change end zone netting to 200' total
- Eliminate Portable Player Benches
- Reduce Portable bleacher system from 4 to 2 units
- Eliminate Athletic Field Lighting but keep conduit for future installation
- Change all walks from Concrete to Bituminous

Our team will work with the committee to develop the final scope, we suggest that the committee engage a cost estimator to provide a professional opinion of cost. The current bidding climate is favorable and it would be wise for the district to craft the project scope with this in mind as it is very possible that the VE required in 2019 will not be required at this time to meet the target budget. Once we understand the final scope we can discuss potential alternates, additive or deductive to maximize the districts investment in the right places.

It is important to note that site assessibility remains the primary goal of this project as you are currently operating under a time variance from the state Architectural Access Board to remedy those issues. We understand your second priority is to develop the

Perkins Eastman
Architects DPC

PERKINSEASTMAN.COM

Boston
Charlotte
Chicago
Dallas
Dubai
Guayaquil
Los Angeles
Mumbai
New York
Pittsburgh
San Francisco
Shanghai
Stamford
Toronto
Washington DC

main synthetic field as that will serve many athletic programs and allow for increased and expanded use.

PROJECT TEAM:

- Traverse Landscape Architecture
- InSite Engineering (Civil Engineering)
- Perkins Eastman

SCHEDULE

- It is our suggestion that the project be ready for bidding in late February 2021 for Summer 2021 construction.

DELIVERABLES:

- We understand that the project will be bid Chapter 30b with the Site Contractor as prime contractor.
- We will provide updated CD drawings and specifications for the district committee review. We suggest that these drawings be estimated, we will coordinate with the districts estimator or we can have the estimate completed as a reimbursable expense to the project.
- We will create a permitting package and coordinate the necessary site permits with the Town of Williamstown.

We are considering this project to be an additional service to the Primary project under contract, as such it will be bound by the same terms and conditions as the executed contract already in place with the district.

The previous project structure had Traverse Landscape as the primary contact and project lead, we understand that the district would prefer Perkins Eastman to provide management and oversight to ensure the project is properly executed.

FEE:

Basic Services Lump Sum - \$ 44,000

There has been discussion regarding the addition of irrigation to the new grass fields, we are aware of the issues surrounding this potential add to the project and will provide guidance as necessary, the fees to design the system are as follows

Design	\$ 16,200
Bidding & CA Services	\$ 8,700

ADD SERVICES:

Engineering and permitting for Athletic Field Lighting – we understand that the Fields Sub-Committee has discussed the possibility of adding lighting to the athletic fields, this scope of work would include the following:

- Electrical Engineering – primary power and distribution (conduit layout will be included in basic services)
- Structural / Geo-technical – foundation design
- Civil Engineering – Permits would have to be filed with the Town
- Irrigation Well location and Drilling services

We can provide proposals for the services associated with the field lighting if requested, we suggest that the irrigation well location and drilling be contracted thru the district directly as that is primarily a local service and should be done by a professional familiar with the area.

EXCLUSIONS:

Our previous agreement includes Construction Administration (CA) services for (1) phase of the project under the basic services agreement. For example, if funding allows the district may be able to construct Phase 1 and 2 concurrently and we will provide CA services for that project; however, if the project is bid over several years and requires multiple seasonal CA efforts we will at that point provide a proposal for stand-alone CA services.

Please review our proposal, if you have any questions or require any clarifications please do not hesitate to contact me directly. We very much look forward to continuing our work with you both and the Committee on this exciting project.

Regards,



Daniel Colli, AIA, LEED AP BD+C
Principal

ACCEPTED BY

DATE

Date: October 12, 2016

To: Mount Greylock School Committee

From: Mount Greylock Financial Subcommittee

Re: Williams College Capital Gift Fund Usage

Vision:

The capital gift from Williams College provides us with the opportunity to enhance aspects of the building project as well as address both current and future needs. The challenge that we face is accurately identifying and prioritizing each of the potential uses. This is a request to approve use of the Williams College capital gift funds for a consultant to achieve this goal, as well as a list of other targets for consideration.

Process:

The Mount Greylock School Committee has identified a process in which the Financial Subcommittee (FinCom) will make recommendations on expenditure of the capital gift funds. As such, the process would be that the superintendent makes a proposal to the FinCom for their recommendation to the full School Committee for approval.

Items Considered for Fund Usage:

Consultant: A consultant to be hired by the superintendent with the expectation that they will report back to the FinCom in January or February, 2017 and present their findings at a school committee meeting immediately thereafter. This consultant will explore details relevant to the list of recommended items (below). Included in the scope of their work would be anticipated individual project cost, timing, and suggestions for minimizing impact, or increasing coordination, with the existing building project.

Building Improvement Fund: School Building Committee (SBC) has discussed and shared with contractors expectations that there will be a maintenance plan for the new building. All such maintenance will be part of the operating budget, however there will be a point where expensive items are necessary to maintain the quality of the facility (e.g. boilers, roof). While these costs may not take place for 10-15 years, it is logical to set aside a portion of the Gift to earn interest during this time to be accessed as needed.

Explore remediation as outlined in the Phase 1 Feasibility Study: The Phase 1 report completed during the MG Building Project Feasibility Study identified several areas for exploration and potential remediation. To ensure that our campus continues to be safe, we should use the information from the Study, and test or remediate as necessary.

Athletic Field Accessibility: Remediation of areas identified for exploration in the Phase 1 Feasibility study could trigger a requirement to upgrade athletic field stands and press box so that they are compliant with the American with Disabilities Act (ADA).

Central Office Relocation: During Phase Four of the Mount Greylock building project, the portion of building currently housing the District Central Office will be eliminated. As such, it will be necessary to either buy, lease or build a new facility. This proposal would be to explore and recommend the specific aspects of each option.

Auditorium Sound Equipment: During the Building Project design, the SBC agreed to remove upgrades to the auditorium sound from the scope of the project. This would necessitate reuse of existing equipment unless the school committee decides to allocate additional funds through the operating budget or capital gift.

Auditorium Lighting Equipment: Similar to the sound equipment, School Building Committee decided to remove upgrades to the lighting equipment plan of reuse of existing.

Parking Lot: Because the Mass. School Building Authority does not reimburse for parking lot renovation/construction, it was removed from the Building Project as a means of reducing the overall cost of the Project. While the existing lot will remain functional, upgrading it to better support traffic flow and safety warrants consideration.

Outside Amphitheater: The building project design has gone to great lengths to acknowledge and incorporate the beauty of the Berkshires and surrounding landscape. One proposed design feature eliminated during value engineering was an amphitheater on the north, or back side, of the building. An outdoor amphitheater would be a place for classes to meet as well as provide opportunities for outdoor presentations to both students and the community.

Solar Panels: The design of the building is such that it is capable of accepting future installation of photovoltaic cells (solar panels). The SBC agreed to eliminate solar panels for the roof in an attempt to cut costs as the MSBA does not reimburse such purchases.

Field House/Athletic Storage: Over three-quarters of our students are involved in at least one after school activity. The School Building Project will renovate the existing gymnasium, however other spaces, including the former hanger and current greenhouse have been used to support several sports and activities through the years. As these will be (or have been) eliminated, new locations must be found to maintain the high student involvement.

District One Schools with Artificial Turf

The field/baseball/etc. count is from satellite imagery and may not be up to date. Population counts could also be higher or lower.									
	Population of City/Town	Artificial Turf	Track	Grass Playing Fields	Baseball/ Softball	Tennis Courts	Ice Rink	Other	
Agawam	28k	1	0	0	1	0	0	Looks like some fields may be under construction	
Central High School (Springfield)	155k	1		1	1	8	1	Many more fields/baseball/tennis in what looks like the adjoining park	
Chicopee High	55k	1	1			0			
Chicopee Comp	55k	1	1			6			
East Longmeadow	16k	1	1	1	4 or 5	0			
Holyoke	39k	1	1		1	5		Some other things I can't ID	
Longmeadow	15k	1	1	2	2	12			
Northampton	28k	1	1	3	2	0			
Mahar	10k	1	1	5	2	0			
Minnechaug (Wilbraham)	14k	1	1	5	3	6			
Pope Francis		1	1					I could not find a recent satellite picture to determine what this school has	
South Hadley	17k	1	0	0	2	0			
Westfield	41k	0	1	1	2	6		Turf Field used is not on campus (Roots Facility)	
West Springfield	28k	1	1			4			
Mount Greylock	11k	0	0	7?	3	0			

Williams College Pledges \$5 Million for Capital Needs of Mt. Greylock Regional School District Outside Scope of the Building Project

Contact: Jim Kolesar, assistant to the president for community and government relations, jkolesar@williams.edu or (413) 597-4233

WILLIAMSTOWN, Mass., February 11, 2016—Williams College announced today that it will form a \$5 million fund to support the Mount Greylock Regional School District's capital needs outside the scope of the building project that the district is pursuing with the Massachusetts School Building Authority (MSBA).

"Williams is pleased to be able to strengthen further its partnership with Mt. Greylock to include a fund for the school district's capital needs, current or future, that fall outside the proposed project with the MSBA," Williams President Adam Falk said. "The fund is designed to support supplementary capital projects in ways that will increase educational value and reduce costs to the district and its member towns."

In the next fiscal year, which begins this July 1, the college will establish the Fund for Mt. Greylock Regional School District Capital Projects, with beginning principal of \$5 million.

For all of the funds in its endowment the college each year determines what percent of the market value of the principal will be distributed to spending accounts. This payout rate is typically between 4.5 percent and 5 percent. Any additional earning or growth is added to the principal so that it can grow over time. Unused dollars in each spending account are carried forward in that account from year to year. For this new fund at any time, beginning with the 2016-17 fiscal year, the amount in the spending account and any or all of the principal will be available for capital projects as determined by the Mt. Greylock School Committee.

Williams has a similar fund for Williamstown Elementary School (WES). It was built over five fiscal years (2006 to 2010), with original principal of \$1.1 million. Since then WES has spent from the fund's spending account almost \$214,000, the account balance is almost \$214,000, and as of June 30, 2015, the fund's principal had grown to \$1.5 million.

The Mt. Greylock Fund will have its full original principal of \$5 million beginning July 2016.

In addition to establishing this new fund for capital needs at Mt. Greylock, Williams has begun researching ways to invest substantially in the facility, if it is constructed, in ways that would further lower its greenhouse gas emissions and reduce its utility costs. In accordance with MSBA regulations, the current project is designed to meet the silver standard of the U.S. Green Building Council's Leadership in Energy and Environmental Design (LEED). The college investment would aim to make the facility even more environmentally sound and energy efficient.

"Mt. Greylock is very fortunate to have now both the prospect of financial support from the MSBA for the main building project and from Williams for other projects, which will enhance educational quality, spare our member towns these capital costs, and reduce our utility bills going forward," said Mt. Greylock Superintendent Doug Dias. "This is truly an exciting moment for our school and for our community."

These capital investments by Williams are in addition to the college's commitment announced in November 2015 of \$200,000 per year to Mount Greylock's operating revenue. That commitment also begins with the 2016-17 fiscal year. It continues and increases the operating support of the donor-provided Williams Fund For Mount Greylock, which over the past five years has made \$777,000 available to the school.

The college also operates and fully supports the Williams Center at Mt. Greylock, which works to maximize the educational value that the college can provide the school. The center does this through regular and one-time programs that integrate Williams students, faculty, and staff into the academic and extracurricular life of Mt. Greylock.



Mount Greylock Regional School District
1781 Cold Spring Road
Williamstown, MA 01267
413-458-9582
FAX (413) 458-9581
www.mgrhs.org

Amended and Restated Description of the Fund for Mt. Greylock Regional School District Capital Projects

To clarify the original intent of the parties, this Amended and Restated Description supersedes and replaces in its entirety the Description of the Fund for Mount Greylock Regional School District Capital Projects signed by Mount Greylock Regional School District on August 8, 2017 and by Williams College on August 9, 2017.

In its Fiscal Year 2017, Williams established the Fund for Mt. Greylock Regional School District Capital Projects (the "Fund"), with beginning principal of \$5 million. As set forth below, payments from the Fund shall be limited to capital projects at Mount Greylock Regional School, 1781 Cold Spring Road, Williamstown, MA (the "School").

The college treats the Fund like an endowment. For all its endowments the college each year determines what percent of the market value of the principal will be distributed to endowment spending accounts. This payout rate is approved by the college's board of trustees annually, and currently is 5% of the average principal measured in the previous 12 quarters. Any additional earning or growth is returned to principal. Unused dollars in each spending account are carried forward in that account to the following year.

When the amount in the spending account for the Fund is zero, the district may spend from the principal.

Payment from the Fund may be made (a) to the Mount Greylock Regional School District either to reimburse the district for capital project expenses at the School, or in advance to provide funds to be used by the District for payment of capital project expenses at the School, or (b) directly to third-party suppliers or contractors for material and/or services delivered or provided for capital projects at the School, all of which shall be as determined and directed by the Mt. Greylock School Committee. The committee may use this money to cover all or part of the cost of any capital project at that School that the district undertakes, whether alone or with other public entities.

Unspent principal in the Fund will grow or recede without limit along with the college's endowments.

The Fund will cease to exist when the Mt. Greylock Regional School District is no longer the primary entity educating students in Williamstown, or upon the expenditure of the entire spending account and principal.



Mount Greylock Regional School District

Date: 2/28/18



Williams College

Date: 3/9/18

Williams College Endowment: actual growth rate with hypothetical starting point

The below calculations use Williams College's actual annual fiscal returns and couple those with a hypothetical set of starting values. The calculations assume no money is withdrawn from the gift over the period.

<u>Year</u>	<u>Actual Annual Return</u>	<u>Hypothetical Value</u>	<u>Hypothetical Value</u>	<u>Hypothetical Value</u>
2020	3.30%	\$ 3,903,931.47	\$ 4,879,914.34	\$ 5,855,897.21
2019	9.60%	\$ 3,779,217.30	\$ 4,724,021.62	\$ 5,668,825.95
2018	13.50%	\$ 3,448,190.97	\$ 4,310,238.71	\$ 5,172,286.45
2017	14.60%	\$ 3,038,053.72	\$ 3,797,567.14	\$ 4,557,080.57
2016	-1.50%	\$ 2,651,006.73	\$ 3,313,758.42	\$ 3,976,510.10
2015	9.90%	\$ 2,691,377.39	\$ 3,364,221.74	\$ 4,037,066.09
2014	17.50%	\$ 2,448,933.02	\$ 3,061,166.28	\$ 3,673,399.54
2013	14.80%	\$ 2,084,198.32	\$ 2,605,247.90	\$ 3,126,297.48
2012	3.10%	\$ 1,815,503.76	\$ 2,269,379.70	\$ 2,723,255.64
2011	20.20%	\$ 1,760,915.38	\$ 2,201,144.23	\$ 2,641,373.08
2010	11.90%	\$ 1,464,987.84	\$ 1,831,234.80	\$ 2,197,481.76
2009	-18.40%	\$ 1,309,193.78	\$ 1,636,492.23	\$ 1,963,790.67
2008	-1.10%	\$ 1,604,404.14	\$ 2,005,505.18	\$ 2,406,606.21
2007	24.00%	\$ 1,622,248.88	\$ 2,027,811.10	\$ 2,433,373.32
2006	12.80%	\$ 1,308,265.23	\$ 1,635,331.53	\$ 1,962,397.84
2005	12.40%	\$ 1,159,809.60	\$ 1,449,762.00	\$ 1,739,714.40
2004	17.80%	\$ 1,031,859.07	\$ 1,289,823.84	\$ 1,547,788.61
2003	5.20%	\$ 875,941.49	\$ 1,094,926.86	\$ 1,313,912.23
2002	-9.10%	\$ 832,644.00	\$ 1,040,805.00	\$ 1,248,966.00
2001	-8.40%	\$ 916,000.00	\$ 1,145,000.00	\$ 1,374,000.00
Hypothetical Starting Point:		\$ 1,000,000.00	\$ 1,250,000.00	\$ 1,500,000.00

Mount Greylock Regional School District School Committee - Workshop

Location: Zoom Remote Meeting

Date: TBD

Time: TBD

Per Governor Baker's order suspending certain provisions of the Open Meeting Law, M.G.L. c. 30A sec. 20, the public will not be allowed to physically access this School Committee meeting.

Draft Workshop Agenda

- I. Call to order
- II. MISSION: At Mount Greylock Regional School District, our mission is to create a community of learners working together in a safe and challenging learning environment that encourages restorative based processes, respect, inclusive diversity, courtesy, integrity and responsibility through high expectations and cooperation resulting in life-long learning and personal growth.
- III. General Goal Setting
 - A. Meeting Length Expectations
 - B. Meeting Content/Focus Expectations
- IV. School Committee Goals & Evaluation Process (Timeline)
 - A. Yearly/Biannually?
- V. Superintendent Goals & Evaluation Process (Timeline)
 - A. Best Practices & Guidance from MASC
- VI. Practices & Procedures
 - A. Open Meeting Law Practices
 - B. Responding to emails to the committee
 - C. Discussions of Executive Session topics out of Executive Session
 - D. Including Stacie in SC emails
 - E. Practices around subcommittee formats vs. regular session
- VII. Motion to Adjourn