

# 8/23/21 COVID-19 HEALTH DATA UPDATE

*Briefings are posted on our website at [www.tulsaschools.org](http://www.tulsaschools.org).*



# High level assessment from 8/23 health data review

## Foundational Health Care Metrics

- We will continue to monitor health metrics that enable us to focus on providing safe in person learning.
- Key metrics for county are updated weekly (on Wednesday).
- From last week, 7 day rolling average of cases continues to increase.

## Early Warning Indicators

- Continuing internal reporting of cases and local district comparisons.
- We only have two days worth of data for this school year. We expect to better understand dynamics and trends after first week.

## Foundational System Metrics

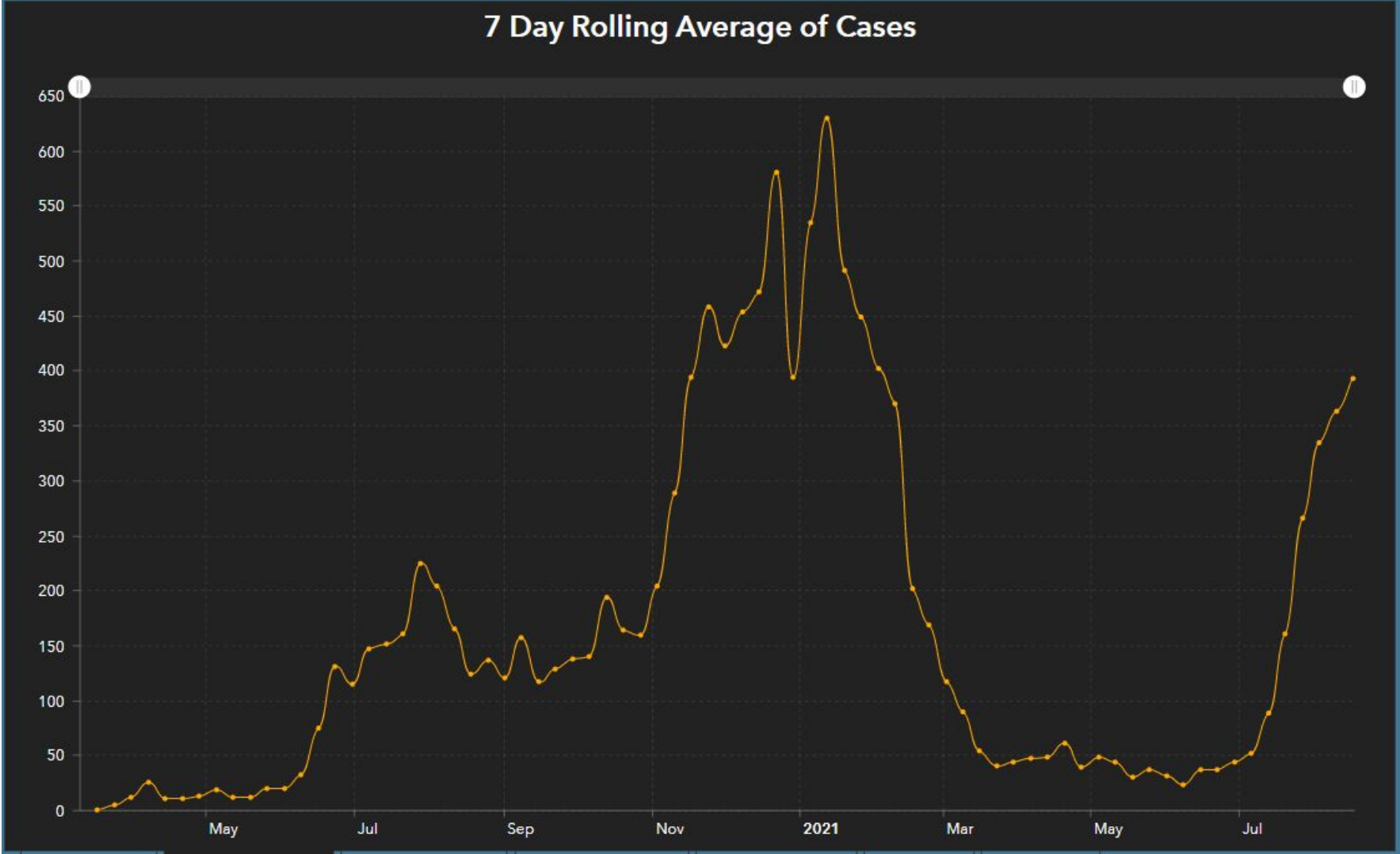
- Safety layers (air quality/filtration, PPE, disinfectant, etc.) are in place at schools, and contact tracing processes are active.

# Foundational Health Care Metrics - 7 day rolling average

## Tulsa County COVID-19 Data

Data Source: OSDH | Note: Each case represents a unique individual, regardless of how many times they were tested.

Updated as of 8/17

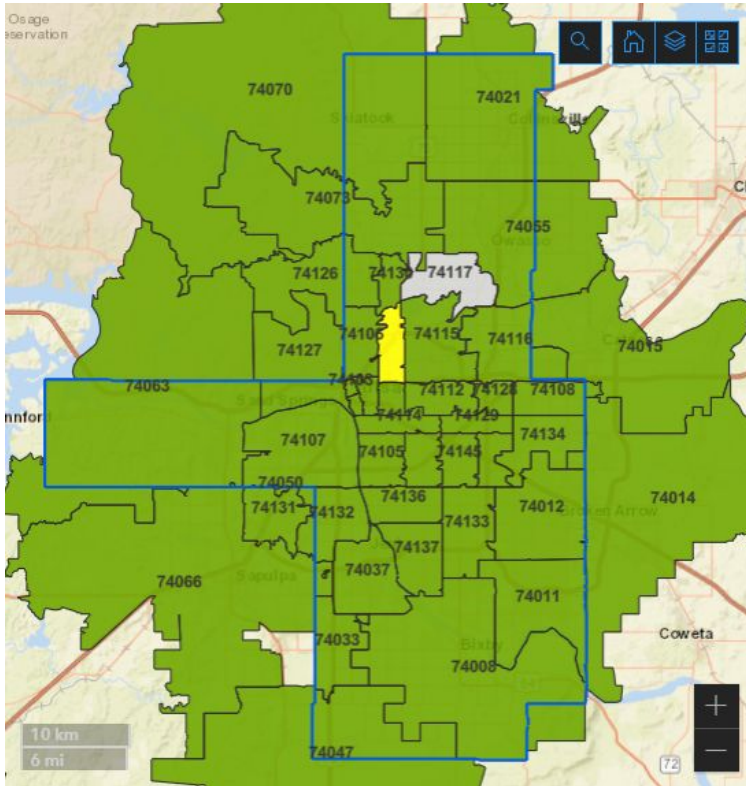


Source: Tulsa Health Department.

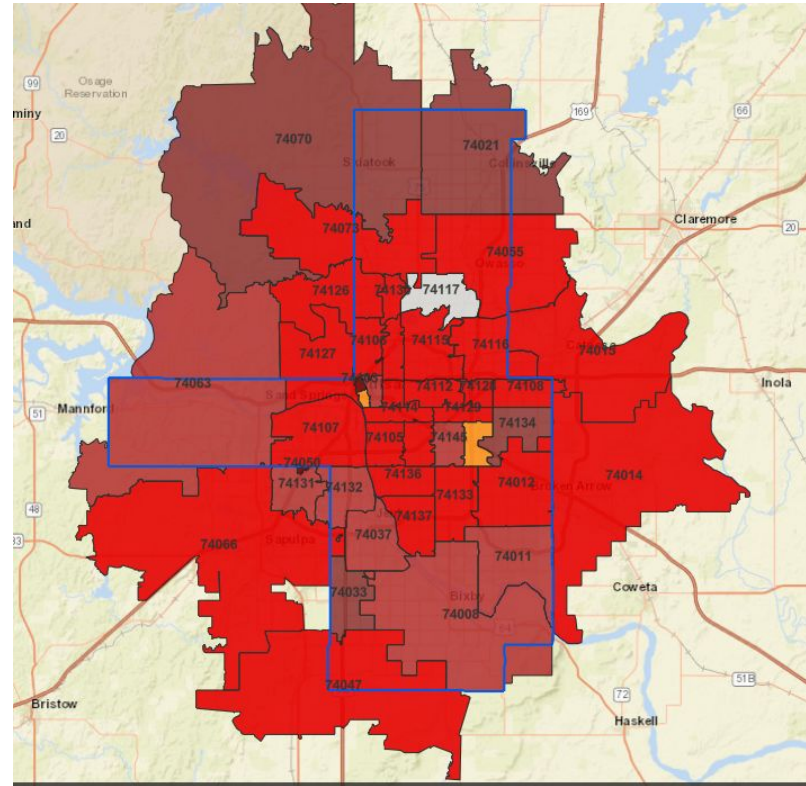
# All but two Tulsa zip codes are red or dark red.

Updated as of 8/18

5/19/21



8/18/21



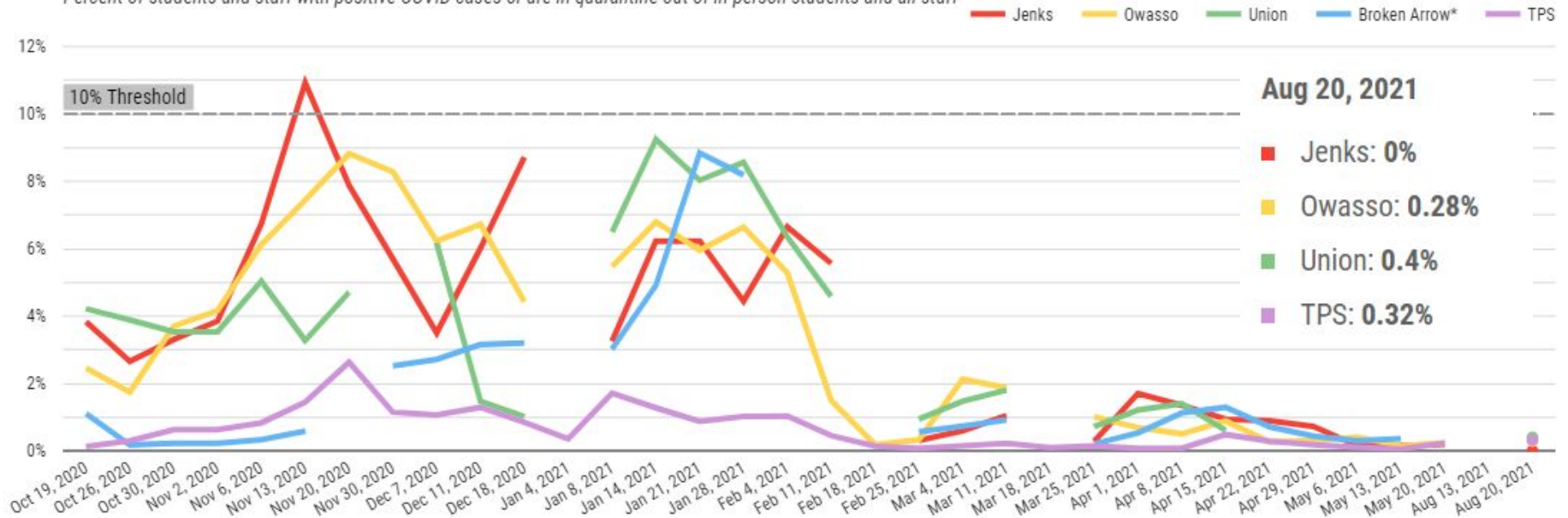
WORKING DRAFT

# Local District Comparison - TREND

Updated 8/20

## Local District Comparisons Over Time

Percent of students and staff with positive COVID cases or are in quarantine out of in-person students and all staff



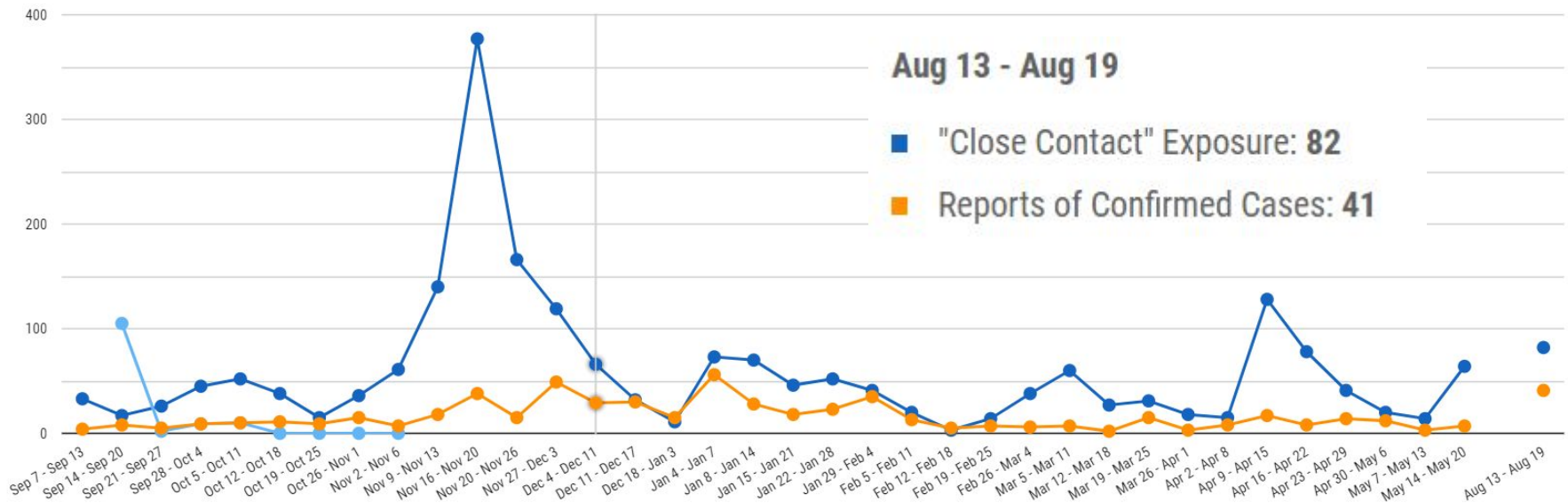
\* as of 8/23 Broken Arrow Public Schools has not publish case rate data.  
Report cover cases from the previous Friday through the close of business on Thursday.

WORKING DRAFT

# Tulsa Public Schools - TREND

Updated 8/20

Number of **close contact exposures** and **confirmed cases** found by Tulsa Public Schools over time



\* as of 8/23 Broken Arrow Public Schools has not publish case rate data.  
Report cover cases from the previous Friday through the close of business on Thursday.

WORKING DRAFT



**QUESTIONS**





# APPENDIX



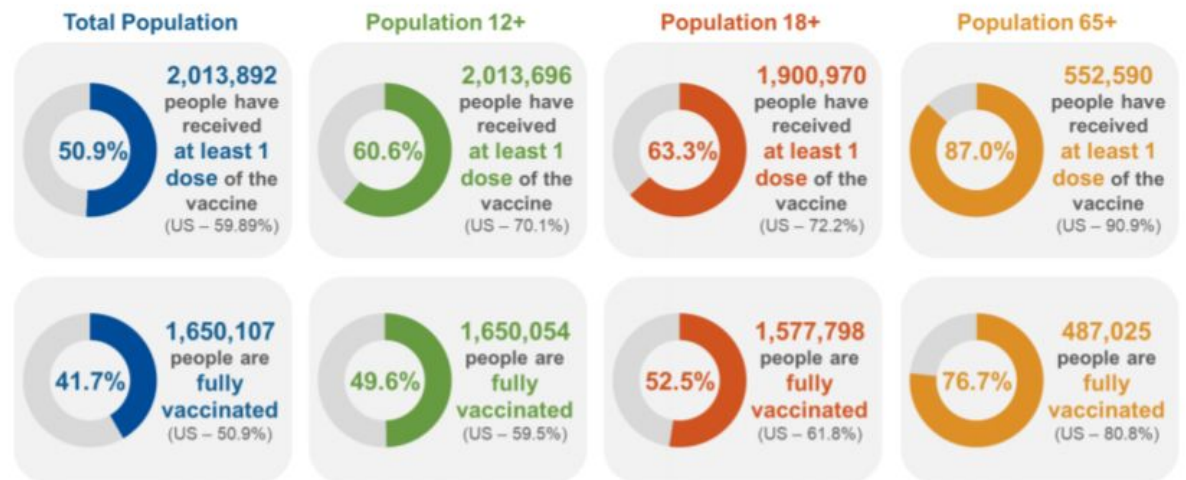
# 60.6% of Oklahomans 12+ have received at least one dose

# 66.1% of Tulsans 12+ have received at least one dose

## COVID-19 VACCINATIONS IN OKLAHOMA - FEDERAL AND STATE, AS OF AUGUST 16, 2021

	Count*	Adult Rate per 100K
<b>Total Doses Administered</b>	<b>3,631,632</b>	<b>114,633</b>

\*Includes state and federal administered doses.



# Foundational & Contextual Data

## Early Warning Indicators at TPS Schools

- These data will help us to monitor conditions that are more localized and specific to our context. These data will help us to be more sensitive to conditions within schools to know if cases are higher or lower than overall county averages. These metrics are:
  - Tulsa Public Schools rapid testing results
  - New case rates for team members and students (TPS contact tracing)

## Foundational School System Metrics

- These internal data measure our ability to appropriately respond to early warning indicators and enact the necessary safety precautions at our schools. These metrics are:
  - Availability of necessary PPE
  - Rates of quarantine
  - Staffing capacity

## Foundational Health Care Metrics

- These core metrics will help us understand overall rates of community spread. These data will help us to assess overall risk and changes in our greater community that may necessitate a change in our response. The core metrics are:
  - 7-day rolling average of new cases in Tulsa Public Schools boundary  
*(calculated from public data).*
  - 7-day rolling average of new cases in Tulsa County