



Covid Safety Plan for the 2021-22 Academic School Year

Overview:

- **The goal of this plan is to provide quality, on-campus instruction while taking precautions to reduce the risk of transmission in our community.** This plan closely follows guidance from the [California Department of Public Health \(CDPH\)](#), the [Pandemic Recovery Framework](#) issued through the San Mateo County of Education and San Mateo Coalition for Safe Schools and Communities, [CDC K-12 School Guidance](#), and has a strong emphasis on the following:
 - **Parents and Community Members:** *Encouraging vaccination for all eligible individuals to decrease COVID-19 rates throughout the community and to protect the most vulnerable.*
 - **Professional Community:** *Vaccine required for all professional community members*
 - **Students:** *strongly encouraged for students ages 12+ to get vaccinated*
 - *Weekly testing and reporting of unvaccinated students ages 12+*
 - *We reserve the right to require vaccination of eligible students. A vaccine requirement for eligible students is currently being evaluated by the Health and Safety Committee, and families will be notified of any decision.*
 - Universal masking while on-campus or doing school-related activities indoors and outdoors
 - Optimizing ventilation through open windows and HEPA filters in every room
 - Return to pre-COVID-19 schedule, indoor classrooms, and Gesher before and aftercare.
 - Middle School: 8:15am-3:30pm (M-Th); 8:15am-3pm (F)

- TK-5: 8:30am-3:30pm (M-Th); 8:30am-3pm (F)
- Gesher extended care: Early morning opens at 7:30am; After care open until 6pm (4pm the day before holidays).
- More targeted quarantine practices in accordance with state and county guidance.
- Prioritizing on campus
- Staying away from school if symptomatic and testing following COVID-19 symptoms
- Requiring a routine COVID-19 screening testing (PCR tests) program as an additional safety layer.

This will be Wornick's framework for the 2021-2022 academic school year. Should conditions change as determined by our Health and Safety Committee, San Mateo County, or the CDPH, we will notify parents and our community. We will revise this document as necessary.

All families are required to sign an acknowledgement that they have read, understand, and are committed to following the protocols set forth in this document.

In the 2020-21 school year, Wornick had no cases of transmission on our campus. We strongly believe that the layers of protection implemented and the commitment of our families were instrumental in that outcome. **We continue to urge all families to prioritize the health and safety of our community - our fates are intertwined and we continue to value the health of the most vulnerable in our community.**

Please note: Parents will be invited to join us on campus on Koret Field from 8-9am during the first week of school for select grades each day. Please join us for coffee from the PTO and meet other parents. Please park in the PJCC overflow lot and walk your child to Koret Field through the side-entrance adjacent to the parking lot. If you have more than one child at the school, you may join us both days.

- Tuesday: TK-1st parents
- Wednesday: 2-3rd parents
- Thursday: 4-5th parents
- Friday: Middle School parents

Safety Measures for Our Community

Vaccinations

The [CDC strongly recommends](#) that all who are eligible (currently 12+) receive the COVID-19 vaccination. Getting vaccinated prevents severe illness, hospitalizations, and death. All eligible unvaccinated people should get vaccinated and continue masking until they are fully vaccinated. With the Delta variant, this is more urgent than ever.

Flu vaccination will be required for students and a deadline for this will be announced in future communication.



a. Employees

We require all employees to be fully vaccinated against COVID-19. Documentation is required and kept on file. At this time, all of our current and new employees have been fully vaccinated.

b. Students

At this time, we strongly recommend students who are eligible for the COVID-19 vaccine receive it or they will be required to undergo weekly testing. Eligible unvaccinated students will not be allowed to go on school trips involving air travel. **We reserve the right to require vaccinations of eligible students and this matter is currently under review with the Health and Safety Team.**

Masking

a. Per the CDPH and San Mateo County, masks are required indoors for everyone on campus,

regardless of vaccination status. Our Health and Safety Committee determined that in light of the resumption of other standard operations including Gesher, masks will be required outdoors, anywhere on campus, and during field trips and outings. The only exception is while eating, and distances should be observed.

b. Masks should have 3 layers, and fit well with no gaps (disposable masks are acceptable). Students should keep additional masks in their backpacks should they need to change them during the day.

c. Persons claiming a medical condition that interferes with their ability to wear a mask should contact the main office.

d. The main office will provide a disposable face covering to anyone on campus who inadvertently fails to bring a face covering to school to prevent unnecessary exclusions.

e. Masking will be enforced. Should students repeatedly fail to wear a mask once even after being warned, the school reserves the right to send the student home.

f. In limited situations where a face covering cannot be used for pedagogical or developmental reasons, (e.g., communicating or assisting young children or those with special needs) a face shield with a drape (per [CDPH guidelines](#)) can be used instead of a face covering while in the classroom as long as the wearer maintains physical distance from others. Staff must return to wearing a face covering outside of the classroom.

g. When students are not present on campus, fully vaccinated adults should follow current indoor masking requirements.

h. If students are participating in a school event or being supervised by school staff, face mask guidance must be followed regardless of location.

Physical Distancing and Cohorting

a. Per state and county guidance, recent evidence indicates that in-person instruction can occur safely without minimum physical distancing requirements when other mitigation strategies (e.g., masking) are implemented.

b. State and county guidelines are not requiring cohorting. While the majority of students' daily activities will be with their grade level, students will move through the halls to change classes, some Hebrew classes may include students from two grades to maximize appropriate leveling, and different classes will use classrooms after another class has used it. Outside, students will also mix (with masks on) during the play portion of recess and lunch, and Gesher. Middle school sports will also include students of different grades, wearing masks.

Peleh Lab, Art, and the Library

Our school is looking to redefine our space in the future. This year, as we reimagine the building, we have made the decision to make the former Peleh and Library Space into the Peleh and Art Space. New flooring has been installed to allow for more creativity during learning and creating. Art and Peleh Lab now each have half of the large space that previously housed the Library, and there will be times that Art and Peleh are in the same space with different classes.

Library will now be in the Beit Midrash and there will be time for students to be able to select books, as well as time for teachers to select books for their students or to read in class.

Ventilation Recommendations

a. Ventilation will be prioritized as a way to mitigate the risk of transmission. Ventilation includes open windows and doors where available, as well as HEPA filters in every room, and will be replaced as appropriate.

Smoke Days

Should the Air Quality Index (AQI) exceed 100, windows and doors will be closed and additional HEPA filters will be added in every classroom to assist with air filtration. PE, recess, lunch, and afterschool sports will be modified when air quality is between 100-150 AQI. Above 150 AQI, school instruction will be remote. As needed, notification of remote classes due to AQI will be sent via email the evening before at 7pm.

Hot Lunch, Snack and Recess

a. Seating with physical distance will be required and enforced for eating time during lunch and snack breaks. All classes will continue to eat lunch and snack outdoors. Masks will only be removed for eating and then students will put masks back on for play time. Students may use the field, play structure area, or blacktop for playtime and may interact with other classes.

b. Volunteers will serve hot lunch outside (masked and behind a plastic barrier). Surfaces that come in contact with food will be washed, rinsed, and sanitized after meals.

c. We will continue to use single use, compostable plates, and utensils for hot lunch.

d. . Students will be informed of their schedule and distancing protocol prior to their first lunch, and it will be repeated throughout the first week. Handwashing stations will be outside and time will be allotted for students to wash their hands before and after lunch.

e. Lunch times will be staggered with the following eating times, followed by 30 minutes of play time.

- TK/Kinder - 11:45am-12pm at the blue picnic tables.
- First and second grade - 12-12:15pm at the blue picnic tables and separated by grade.
- Third grade -12-12:15pm on the field.
- Fourth and fifth grade - 12:15-12:30pm at the blue picnic tables and separated by grade.
- Sixth, seventh, eighth grades - 12:15-12:30 on the patio and separated by grade.

Recess for TK/Kindergarten through third grade will be outside from 10:10-10:25am, then for fourth grade through eighth grade from 10:30-10:45 am. Adjustments and use of outdoor tents will be utilized on rainy days.

Staying Home When Feeling Sick and Testing

a. Students, teachers, staff, and volunteers who have symptoms of infectious illness, such as the flu or COVID-19, should stay home and be referred to their healthcare provider for testing and care. Please notify health@wornickjds.org and stay home should a community member experience any of these symptoms including but not limited to fever, chills, cough, shortness of breath, fatigue, aches, loss of smell/taste, sore throat, runny nose, nausea, or diarrhea.

b. Anyone with these symptoms of COVID-19 should not return to campus until:

1. 24-hours have passed since a fever without the use of fever-reducing medications.
2. Symptoms have improved and fever reduced without the aid of a fever reducing medication.
3. They produce a negative COVID-19 test or a healthcare provider has produced documentation that the symptoms are typical of a chronic condition, or a health care provider has confirmed an alternative diagnosis, or at least 10 days have passed since onset of symptoms.
4. They receive approval from health@wornickjds.org to return to campus.

Testing

a. Response testing (only after symptoms) can be an Antigen or PCR test. If you are asymptomatic and you are exposed to COVID-19 through close contact, you must take a PCR test. For post travel or surveillance testing, the test needs to be PCR.

b. Prior to School Testing. Covid testing will be required for all students within 5 days prior to the first day of school on August 24. Please schedule your test for your student. Results should be sent to info@wornickjds.org by 5 pm on **Monday, August 23, 2021**. If your student is attending a Middle School Sports Boot Camp or Hebrew Ulpan class for transfer students in grades 2-6, a negative test must be taken between August 11 and 15. Results should be sent to info@wornickjds.org by 5 pm on **Sunday, August 15**.

c. Ongoing Screening Testing. Wornick is continuing a surveillance testing plan to address the possibility of asymptomatic cases in our professional community and our student population. At this time, students and professional community members must test twice a month and, or Wornick is also contracting with a third party service to provide regular testing on our campus for all teachers, staff, students, and volunteers who plan to be on site. We will be testing 50% of each cohort each week. Due to continued unknown trajectory of the delta variant, we think it's prudent at this time to change to 2x per month, instead of 1x per month. We will communicate testing information via email communication prior to the start of school. Results must be emailed to info@wornickjds.org.

c. **Testing Requirement for Unvaccinated Students Age 12+.** Testing is required on a weekly basis for unvaccinated students age 12+. Testing is not covered by the school. Please send your child's weekly result to info@[wornickkids.org](mailto:info@wornickkids.org).

d. We will keep a supply of FDA approved home tests for symptomatic and unmasked close contact cases.

Communication, Quarantine Protocols, Contact Tracing, and Response

Pursuant to the California Department of Health and the San Mateo County of Education Pandemic Recovery Framework, Wornick will follow the below recommendations:

Students, teachers, and staff presenting with any COVID-19 symptoms will be sent home immediately. They will be separated from others outside until they go home.

When there is a positive case in our community, we will communicate it widely and let the community know the grade of the affected individual, as well as inform any close contacts.

For close contact exposures, please see the three scenarios below for unvaccinated individuals, then the following scenario for vaccinated individuals:

Quarantine requirements for vaccinated close contacts

a. For those who are vaccinated, we will follow the [CDPH Fully Vaccinated People Guidance](#) regarding quarantine, which includes the following recommendations

1. Fully vaccinated individuals may refrain from quarantine but test following a known exposure if asymptomatic. Undergo testing on days 0, 3, 5, and 7.

2. If fully vaccinated people test positive for COVID, they should follow CDPH and local health department guidance regarding isolation and/or exclusion from high risk settings.

Quarantine requirement for unvaccinated students for exposures when both parties were wearing a mask, as required on our campus.

a. When both parties were wearing a mask in the indoor classroom setting, unvaccinated students who are close contacts (more than 15 minutes over a 24-hour period within 0-6 feet indoors) may undergo a modified 10-day quarantine as follows. **They may continue to attend school for in-person instruction if they:**

- i. Are asymptomatic;
- ii. Continue to appropriately mask, as required;
- iii. Undergo at least twice weekly testing during the 10-day quarantine period; and
- iv. Continue to quarantine for all extracurricular activities at school, including sports, Gesher, and activities within the community setting.

Quarantine requirement for vaccinated students for exposure when a parent or close contact were not wearing masks.

a. When the parent self-isolates and follows a 10-day quarantine from the student, the student may return to campus, **they may continue to attend school for in-person instruction if they:**

- i. Are asymptomatic;
- ii. Continue to appropriately mask, as required;
- iii. Undergo at least twice weekly testing during the 10-day quarantine period; and
- iv. Continue to quarantine for all extracurricular activities at school, including sports, Gesher, and activities within the community setting.

Quarantine requirement for vaccinated students for exposure when a parent, sibling, or close contact is symptomatic but awaiting test results.

- a. A vaccinated sibling of a close contact sibling or parent may not come to school while the close contact sibling is awaiting test results. Should the close contact sibling test positive the vaccinated sibling must also stay home.

Quarantine requirement for unvaccinated close contacts who were not wearing masks or for whom the infected individual was not wearing a mask during the indoor exposure.

a. For these contacts, those who remain asymptomatic, meaning they have NOT had any symptoms, may discontinue self-quarantine under the following conditions:

- i. Quarantine can end after Day 10 from the date of last exposure without testing; OR
- ii. Quarantine can end after Day 7 if a diagnostic specimen is collected after Day 5 from the date of last exposure and tests negative.

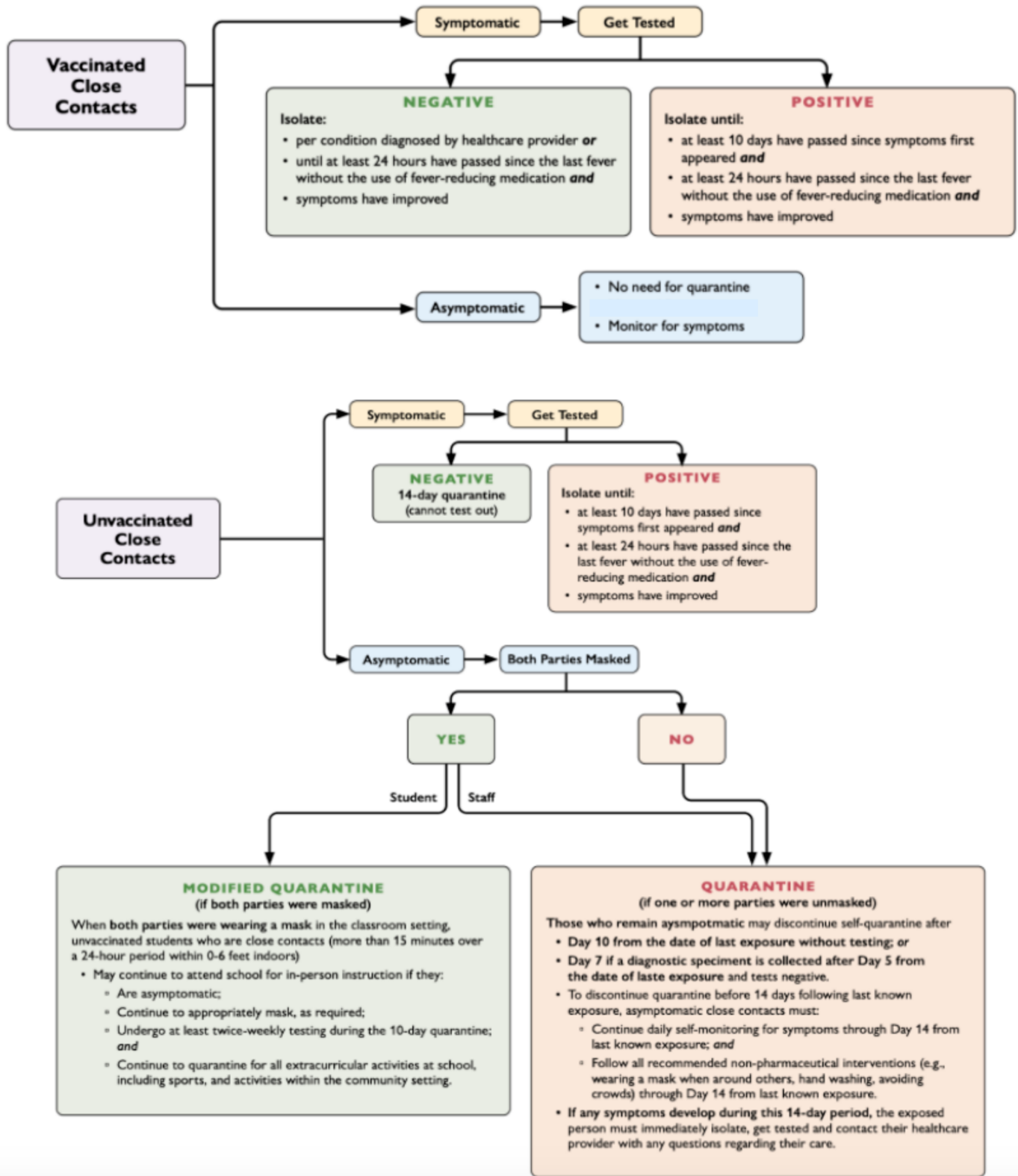
b. To discontinue quarantine before 14 days following last known exposure, asymptomatic close contacts must:

- i. Continue daily self-monitoring for symptoms through Day 14 from last known exposure;
AND
- ii. Follow all recommended non-pharmaceutical interventions (e.g., wearing a mask when around others, hand washing, avoiding crowds) through Day 14 from last known exposure.

c. If any symptoms develop during this 14-day period, the exposed person must immediately isolate, get tested, and contact their healthcare provider with any questions regarding their care.

COVID-19 Exposure at School (CDPH)

Close contact at school if both parties are masked may be able to continue learning on campus with frequent testing at 0 days, 3 days, 5 days, and 8 days following exposure.



Isolation Requirements

a. For both vaccinated and unvaccinated persons, follow the CDPH [Isolation Guidance](#) for those diagnosed with COVID-19. The CDPH recommends a symptom-based strategy to determine the duration of isolation for people with COVID-19 who are symptomatic, meaning they have symptoms. Persons with COVID-19 who have symptoms and were instructed to care for themselves at home may discontinue self-isolation under the following conditions:

- i. At least 10 days have passed since symptom onset; AND
- ii. At least 24 hours have passed since resolution of fever without the use of fever-reducing medications; AND other symptoms have improved

Hand Hygiene

- a. Hand-washing will be taught, reinforced, and promoted throughout the day. The community will be encouraged to avoid contact with one's eyes, nose, and mouth, and covering coughs and sneezes among students and staff.
- b. Time will be allotted throughout the day for hand washing. It will be required before and after eating, after using the toilet, and after handling garbage, or removing gloves.
- c. The school will have adequate supplies to support healthy hygiene behaviors, including soap, tissues, no-touch trash cans, face coverings, and hand sanitizers with at least 60 percent ethyl alcohol for staff and children who can safely use hand sanitizer.

Cleaning

- a. Since reopening in September 2020, Wornick has hired additional staff to perform cleaning and disinfection throughout the school day, as well as deep cleaning at night. Staff are using CDC approved cleaners.
- b. Cleaning and disinfecting occurs throughout the day.
- c. Cleaning of the lunch tables occurs after every sitting.
- d. Desks and workspace surfaces in spaces shared by multiple classes throughout the day will be wiped down after every class.
- e. If a facility has had a sick person with COVID-19 within the last 24 hours, the spaces occupied by the infected individual will be cleaned AND disinfected.

Travel Policy

Please see the table below for CDC recommendations and requirements concerning travel, which we will continue to follow. At this time, unvaccinated students who travel by air must quarantine for 7 days following air travel (with a negative test taken 3-5 days post travel) or 10 days following air travel (with no test). Fully vaccinated individuals do not have to quarantine post air travel, and their unvaccinated students who remained home and did not travel do not have to quarantine.

Travel Recommendations and Requirements

Domestic Travel	Not Vaccinated	Fully Vaccinated
Get tested 1-3 days before travel	✓	
Get tested 3-5 days after travel and self-quarantine for 7 days. Self-quarantine for 10 days if you don't get tested.	✓	
Self-monitor for symptoms	✓	✓
Wear a mask and take other precautions during travel	✓	✓

International Travel	Not Vaccinated	Fully Vaccinated
Get tested 1-3 days before traveling out of the US	✓	
Mandatory test required before flying to US	✓	✓
Get tested 3-5 days after travel	✓	✓
Self-quarantine after travel for 7 days with a negative test or 10 days without test	✓	
Self-monitor for symptoms	✓	✓
Wear a mask and take other precautions during travel	✓	✓

Remote Learning/Hybrid Policy

We believe our program is safe and goes above and beyond all guidelines. We are prioritizing on campus learning for the benefit of our students. If you have to quarantine for any reason related to COVID-19, or you have other minor symptoms, you will be able to Zoom into the classroom. This year, we will not be sending home materials, students will just be listening to the instructor. The parent must notify the main office at info@wornickjds.org and the homeroom teacher. Parents must continue to notify the teacher and office if a student must stay home for the above reasons and qualify to Zoom into the class.

The links will be in the student's calendar. A Zoom room will not be opened unless the office and teacher are notified.

Remote learning is not allowed for vacation or travel of any kind. However, if students have to quarantine post-travel, they will be allowed to Zoom into the classroom during those days. If a student is ill with symptoms such as fever, vomiting, or other major symptoms, please have your student take a sick day. They should not be on Zoom in that circumstance.

Packaged Goods for Birthdays and Celebrations

Pre-packaged snacks will be allowed for birthday celebrations. Please coordinate with your student's teacher two weeks prior to bringing them to school. Packaged goods should be vegetarian/nut free/dairy/pareve/kosher with a hechsher.

Drop Off and Pick Up

Middle school starts at 8:15am and TK-5 grades start at 8:20am. Students may be dropped off as early as 7:30am and should arrive with sufficient time to be seated in class by 8:15am for middle school and to walk to class for TK-5 by the 8:20am bell. All drop offs will be in the main Wornick parking lot off South Road. **Drop off is not currently allowed on Balclutha Road.** There are no staggered drop off times. Please plan to arrive 15 minutes prior to your student's start time, or you may be waiting in a line of cars with PJCC Preschool traffic.

Drop off for TK-4 will be in the parking lot along the external lane of the east side of the fence. There will be double lanes and a merging point between the two gate openings. There will be two drop off lanes in the lot. The lane on the right will be for Grades TK-4. Students must exit from the right side of the vehicle and enter campus from the main gate at the top of the loop.

The most interior loop will be for Grades 5-8. They will enter the left most lane, and make a loop that will allow older students to have a guided crosswalk to the larger double gate entry onto Koret Field. TK-4 students with middle school siblings may walk in with them from the interior loop.

The center lane is a safety lane to allow for passing and emergencies. Please note that students will be crossing this lane, so utmost caution should be taken at all times.

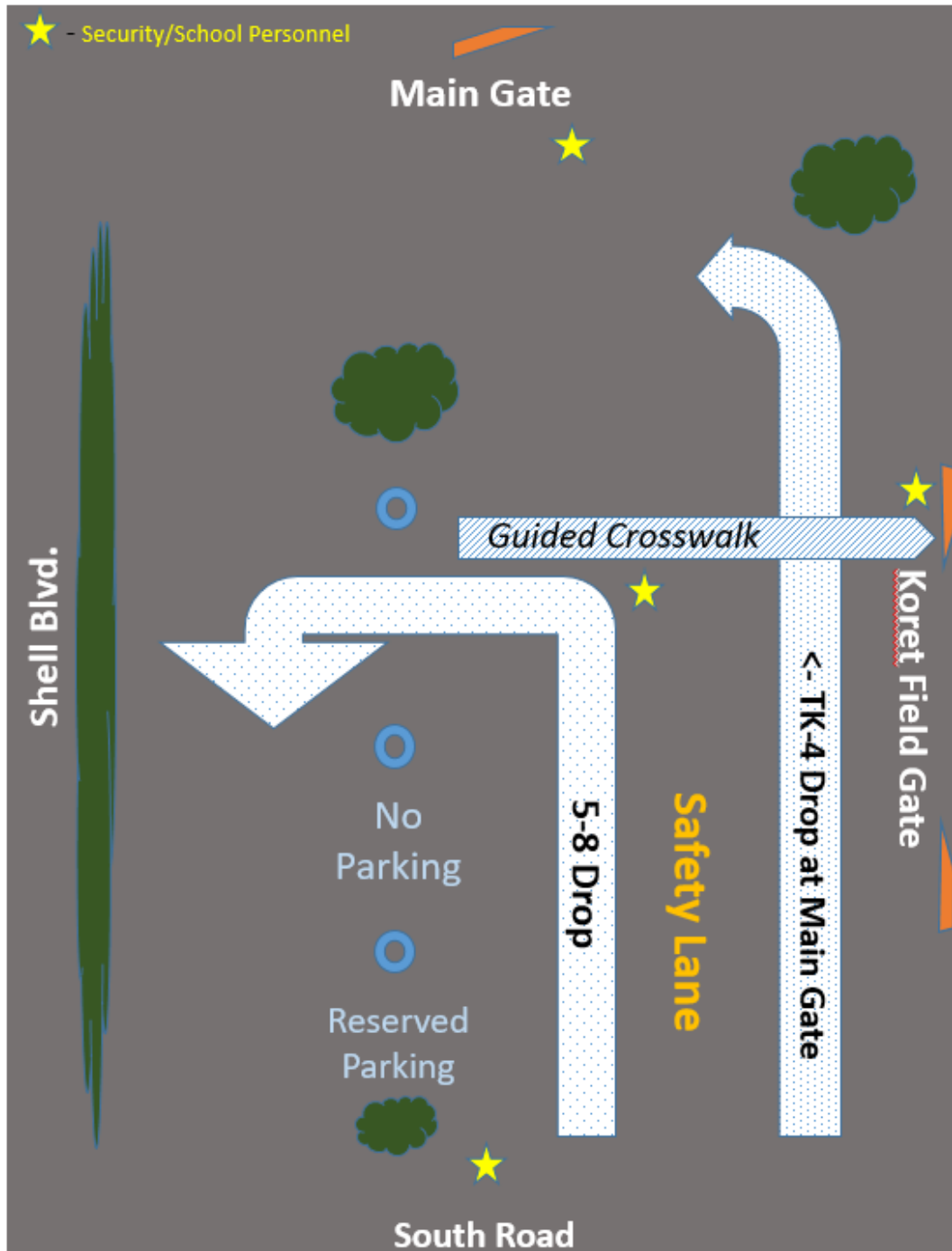
There will be no parking in this lot for families. There will be flags and security instructing where to enter. Stopping is not permitted along the red zone on Shell Boulevard.

Pedestrians and bike riders need to enter the main gate at the parking lot near the Rose Garden. No doors will be open on Balclutha Road. For the first week to reduce interaction with traffic, if parents park in the overflow lot by the PJCC for their assigned drop off social days,

please walk on the sidewalk on the south side of South Road (opposite the preschool), walk past the preschool, down to Shell Boulevard and into campus using the sidewalk.

TK-5th grade will line up on the field behind large signs with their grade. At 8:20am, their teacher will escort them to their classroom.

The first week may be challenging as we get back into a rhythm. We have an amazing security team and we ask that you have patience the first week. Please wait in your vehicle and our staff will assist your student in exiting the car.



Middle school students are allowed to walk or bike to and from campus while together. Middle school students also have the opportunity to leave campus following school to walk to a friend's house, go to Starbucks, etc. Written permission is required via FACTS.

On-Campus Gatherings and Vaccination Verification for Volunteers

“Community” is one of the first words that comes to mind when people think of Wornick, and we know that in-person activities are more impactful for community building than virtual ones. Though we are advised to limit non-essential in-person activities, we plan to have occasional outdoor, physically distanced gatherings on campus.

- a. We plan to allow limited, space outdoor gatherings on campus as county guidance and our Health and Safety Committee deem appropriate.
- b. Parent volunteers will have opportunities to come on campus on a limited basis. All volunteers will be required to produce proof of vaccination (one dose Johnson & Johnson or two doses of Pfizer or Moderna).
- c. We will not require proof of vaccination for outside gatherings on-campus.
- d. Board, PTO, and other meetings will continue to be conducted via Zoom.

Below is our readiness indicator for activities on-campus for this year. We are currently at the CORAL level.

INDICATOR STATUS FOR PARENTS ON CAMPUS

LEVEL	PARENTS ON-CAMPUS	COMMUNITY GATHERING	PARENT VOLUNTEERS
GOLD	Parents On-campus, Walking Students Inside Gate Not in Building	Outdoor Gatherings	Vaccinated Parents
CORAL	Limited, Drop Off in Parking Lot	Limited, Distanced Outdoors	Limited, Vaccinated Parents
MAGENTA	None, Drop Off in Parking Lot	None	None

Gesher

Gesher, our extended care program after school, will be offered. Students will come from their class, check-in outside and have time for play, snack, and homework outside. A tent will be utilized for homework as well as during rainy days. Gesher will be prioritized as an outdoor activity, and inside, high-contact activities will be minimized. Pickup for Gesher will be via sign-up at either 4:45-5 pm or 5:45-6 pm. The main office will send a sign up to all registered Gesher families for them to choose their pickup time. To pick up students from Gesher, please park in the main parking lot and wait at the main gate at your pickup time. Students will be brought down to the gate and released to you. Learn more about Gesher [here](#).

Individualized Support

The past 18+ months have been difficult for students. Suzy Kosh, our Director of Learning Support, and Sarah Calónico, our School Counselor, are available to help students who are struggling with academics, interpersonal relationships, or just need to talk.

COVID-19 Safety Planning Transparency

As we did during the 2020-2021 academic year, we will continue to provide transparency to the schoolwide community regarding the school's safety plans. Our COVID-19 Safety Plan is accessible at wornickjds.org. If addendums are added, the school wide community will be notified.

Understanding Risks

In-person learning is a measured attempt to provide quality education for our students, while minimizing risks. We cannot guarantee no risks and it is possible the pandemic could affect our community.

We continue to ask all families to be responsible community citizens and follow the guidelines outlined in the CDC.

Communication Samples for Suspected Exposure

[Exposed Students - Vaccinated](#)

[Unvaccinated - Masked](#)

[Cal/OSHA Sample Notice of Potential Exposure to Employees](#)

[Cal/OSHA Sample Notice of Potential Exposure to Contractors](#)

Addendum

Due to the continued unknown trajectory of the delta variant, we think it's prudent at this time to change to two times testing per month, instead of one time per month. Instead of testing one time per month, we are requiring testing twice per month for each student and professional community member. We will test 50% of each cohort each week.

When a student has a sibling who is awaiting a covid test result due to symptoms or being an unmasked close contact, the student must stay home until the student's test result comes back negative.

We suggest families keep a supply of FDA approved home tests for symptomatic and unmasked close contact cases. Responsive testing for symptoms only can be antigen or PCR tests.

We continue to ask all families to make the safety of the Wornick community a priority, and be responsible community citizens and follow the guidelines outlined in the [CDC](#), [California Department of Health](#), and [San Mateo County](#).

Communication Samples for Suspected Exposure

[Exposed Students - Vaccinated](#)

[Unvaccinated - Masked](#)

[Cal/OSHA Sample Notice of Potential Exposure to Employees](#)

[Cal/OSHA Sample Notice of Potential Exposure to Contractors](#)