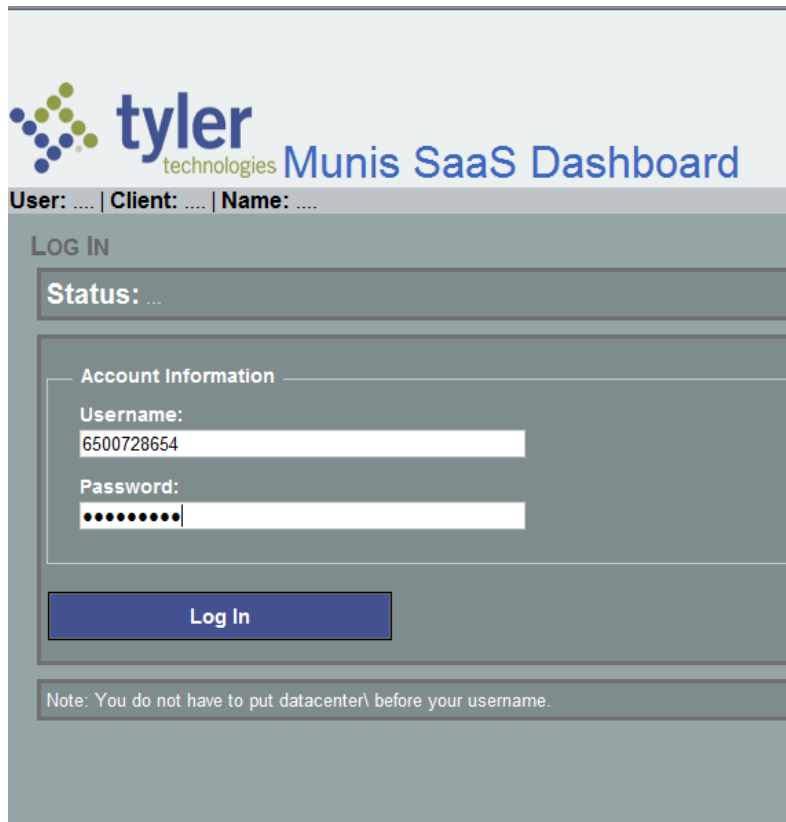




Signing Into Munis

1. Find Munis in your Novell window or type this URL in Internet Explorer

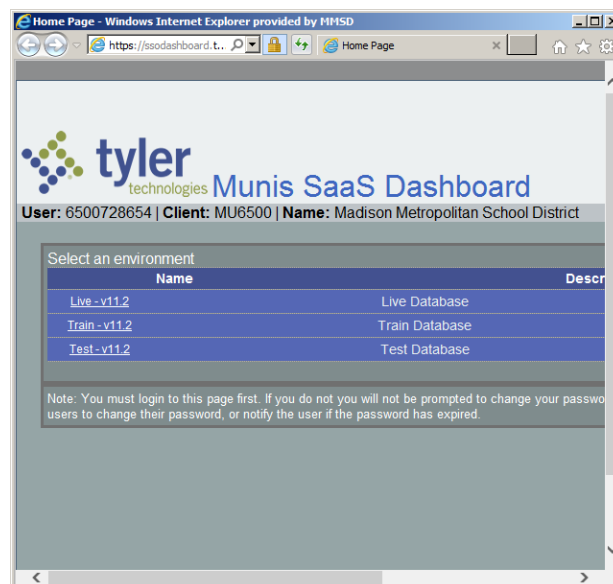
<https://aspdashboard.tylertech.com/Account/Login.aspx?ReturnUrl=%2f>



If the screen looks like this,
your username is ALWAYS
65007XXXXX

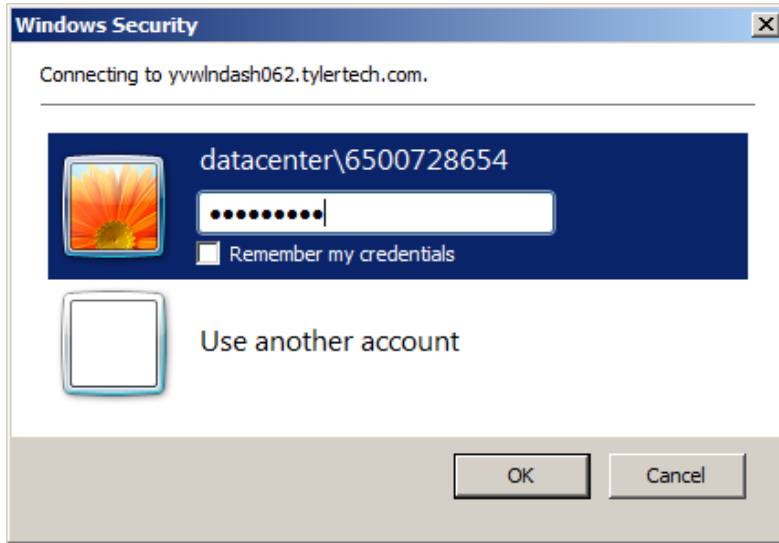
Note:
7XXXXX indicates your b#
Do not user datacenter\

2. Select Live



Name	Descr
Live - v11.2	Live Database
Train - v11.2	Train Database
Test - v11.2	Test Database

3. You will need to sign in again



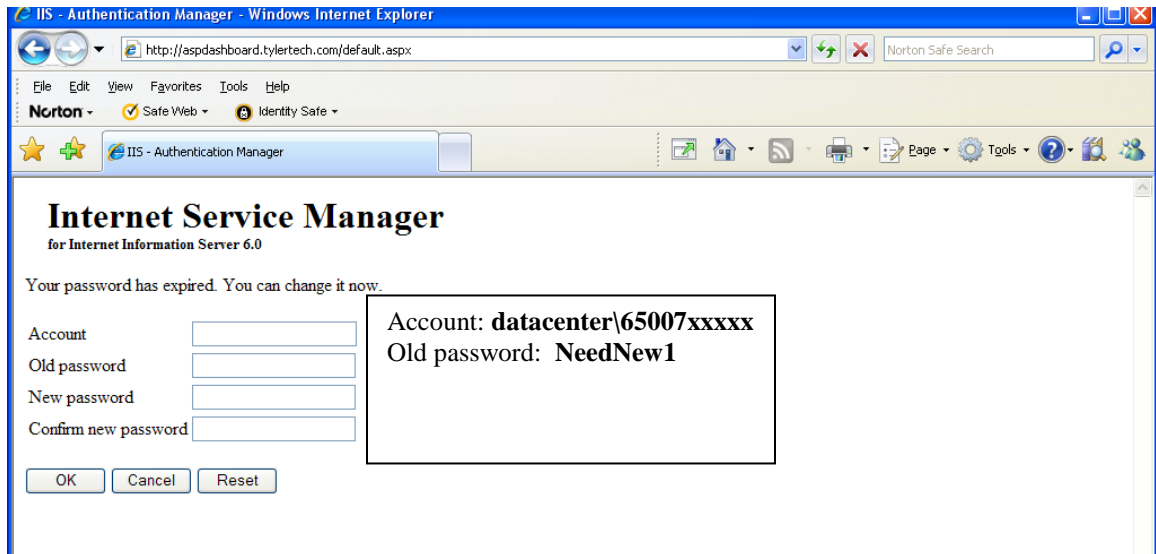
If the screen looks like this, your username is ALWAYS **datacenter\65007XXXXX**

Note:
If your username is MMSD/ click on "Use another account" so you can change your username

The \ key is above the enter key

There is no b in your username

4. If your password is expired, you will be prompted to change your password.



- 5. New password must contain at least one upper, one lower and one number and be eight characters.
- 6. You will be prompted to log in again.
- 7. Passwords are good for 90 days and you will not receive an e-mail notification