

2021-22  
SCHOOL YEAR CALENDAR



# WELCOME TO THE 2021-22 SCHOOL YEAR!

## About Our Calendar

Albemarle County Public Schools (ACPS) is excited to present our employees, school families, and community partners with our 2021-22 School Year Calendar!

First and foremost, our calendar is a celebration of the creativity and talents of our student artists. ACPS values the fine arts as an essential component of a rich and excellent education. As numerous research studies have shown, students who engage in arts education reap developmental gains, including improved academic performance and enhanced social-emotional skills, that benefit them well into the future. Accordingly, ACPS provides comprehensive K-12 visual and performing arts instruction in all of our schools.

The artwork featured in this calendar\* was created by ACPS students during the 2019-20 school year. As you flip through the pages of the calendar over the course of this school year, we hope the variety of amazing artwork brings you joy, wonderment, and even inspiration. We also hope you find our calendar to be a useful and informative tool as you engage with our schools.

For more information about fine arts programming in our schools, please talk with one of our school art teachers or visit [www.k12albemarle.org/FineArts](http://www.k12albemarle.org/FineArts).

As part of Albemarle County's efforts toward promoting innovative environmental stewardship and climate protection, this calendar is printed on paper that is certified by the Forest Stewardship Council.

*\*Photographs of artwork featured in this calendar may have been cropped to fit available space and/or printing dimensions.*

## Table of Contents

Strategic Plan.....	3
School Board Information .....	5
Superintendent's Cabinet.....	6
Policy Statements.....	7
13-Month Calendar.....	8-33
Key Advisory Groups .....	34
Inclement Weather Decisions.....	35
Service Directory .....	36
School Directory .....	37
2021-22 Calendar-at-a-Glance.....	39



LILY ANDERSON | Henley



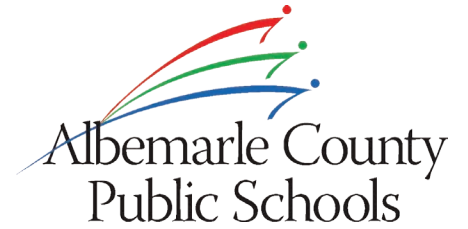
LACY TURNER | Red Hill



MALIYA EDWARDS | woodbrook



# STRATEGIC PLAN: LEARNING FOR ALL



## Vision

Our learners are engaged in authentic, challenging, and relevant learning experiences, becoming lifelong contributors and leaders in our dynamic and diverse society.

## Mission

Working together as a team, we will end the predictive value of race, class, gender, and special capacities for our children's success through high-quality teaching and learning for all. We seek to build relationships with families and communities to ensure that every student succeeds.

**We will know every student.**

## Values

### Equity

We will provide every student with the level of support necessary to thrive.

### Excellence

We will mitigate barriers and provide opportunities for every student to be academically successful.

### Family and Community

We will engage with and share the responsibility for student success with families and community partners.

### Wellness

We will support the physical and emotional health of our students and staff.

## Goals

### Thriving Students

ACPS will facilitate learning experiences grounded in high expectations, networks of care, and student curiosity to ensure academic and social-emotional development for all students while eliminating opportunity, access, and achievement gaps.

### Affirming and Empowering Communities

ACPS commits to developing a culturally responsive environment that will respect and champion the diversity of life experiences of all stakeholders and supports the physical and mental health of our students, staff, and families so they are actively empowered to engage in our school community.

### Equitable, Transformative Resources

ACPS will attract, develop, and retain the highest quality staff; develop sustainable and modern facilities, infrastructure, and equipment; and distribute all resources in an equitable manner to transform learning experiences and opportunities.



CHRISTIAN GRAY | Scottsville







# SCHOOL BOARD INFORMATION

## About the Board

The Albemarle County School Board and the Superintendent of Schools are bound in a partnership of mutual trust and vision. The School Board and the Superintendent are responsible for selecting the results that the school system should be pursuing. Together, the School Board and the Superintendent take primary responsibility for ensuring that Albemarle County Public Schools is an effective school system. The School Board governs Albemarle County Public Schools as a corporate body according to law. Members are elected by the citizens of the county and serve staggered four-year terms. There are seven members, six representing each of our magisterial districts and one at-large member.

## School Board Policies

The School Board develops policies to govern the operation of the school system. These policies cover instructional programs, fiscal management, personnel, students, school and community relations, facility maintenance, and many other areas. Copies of policies are available online through our ElectronicSchoolBoard website at [esb.k12albemarle.org](http://esb.k12albemarle.org). Community members can also access policies at school division offices and each of our county schools.

## School Board Meetings

The School Board meets regularly during the school year, typically on the second and fourth Thursday of each month at 6:30 p.m. School Board meetings are open to the public. While meetings are occurring virtually, the Board encourages community members to participate by watching via livestream and offering public comment. Community members can visit the School Board web page at [www.k12albemarle.org/board](http://www.k12albemarle.org/board) to access the video livestream; sign up to provide public comment; and view meeting schedules, agendas and minutes.

## Contact the Board

Contact information for School Board members is provided on the right side of this page and also on the School Board web page at [www.k12albemarle.org/board](http://www.k12albemarle.org/board). Community members may email the entire School Board at [SchoolBoard@k12albemarle.org](mailto:SchoolBoard@k12albemarle.org). If you are unsure who your School Board representative is, a map of the county's magisterial districts is available on the School Board web page for reference. If you have questions or would like more information about the School Board, please contact the School Board Clerk at (434) 296-5893.

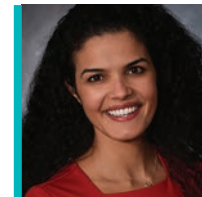
*\*The individuals representing these districts may change effective January 1, 2022, based on the results of the November 2021 election.*



### Jack Jouett District\*

**Kate Acuff, J.D., Ph.D.**  
(434) 979-6333 | [kacuff@k12albemarle.org](mailto:kacuff@k12albemarle.org)

*Term expires 12/31/2021*



### Rio District\*

**Katrina Callsen, Vice-Chair**  
(860) 753-1335 | [kcallsen@k12albemarle.org](mailto:kcallsen@k12albemarle.org)

*Term expires 12/31/2021*



### Rivanna District

**Judy Le**  
(434) 326-8315 | [jle@k12albemarle.org](mailto:jle@k12albemarle.org)

*Term expires 12/31/2023*



### Samuel Miller District\*

**Graham Paige, Chair**  
(434) 286-3639 | [gpaige@k12albemarle.org](mailto:gpaige@k12albemarle.org)

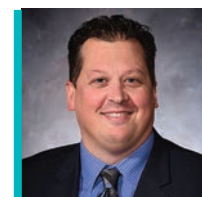
*Term expires 12/31/2021*



### Scottsville District

**Ellen Osborne**  
(434) 249-3295 | [eosborne@k12albemarle.org](mailto:eosborne@k12albemarle.org)

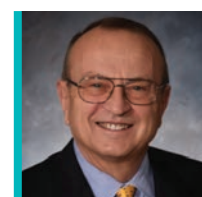
*Term expires 12/31/2023*



### White Hall District

**David Oberg**  
(434) 981-1160 | [doberg@k12albemarle.org](mailto:doberg@k12albemarle.org)

*Term expires 12/31/2023*



### At-Large

**Jonno Alcaro**  
(434) 906-9300 | [jalcaro@k12albemarle.org](mailto:jalcaro@k12albemarle.org)

*Term expires 12/31/2023*



# SUPERINTENDENT'S CABINET



**Matthew Haas, Ed.D.**  
Superintendent of Schools  
(434) 296-5826



**Debora Collins**  
Deputy Superintendent  
(434) 296-5820



**Clare Keiser, Ed.D.**  
Assistant Superintendent for  
Organizational Development  
and Human Resource Leadership  
(434) 296-5820



**Bernard Hairston, Ed.D.**  
Assistant Superintendent for  
School Community Empowerment  
(434) 296-5820



**Rosalyn Schmitt**  
Chief Operating Officer  
(434) 296-5820



**Patrick McLaughlin, Ed.D.**  
Chief of Strategic Planning  
(434) 296-5820



**Christine Diggs, Ed.D.**  
Chief Technology Officer  
(434) 872-4569



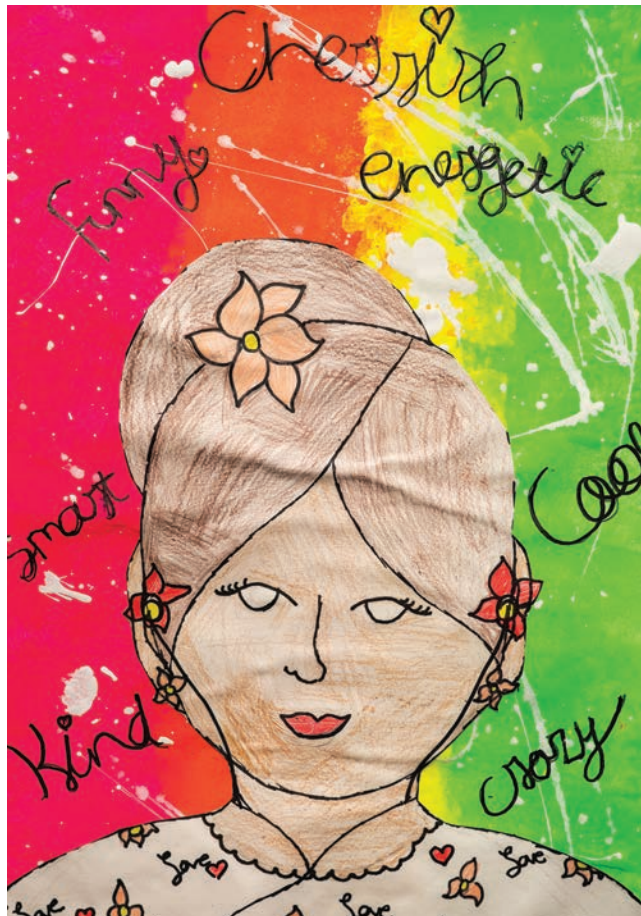
**Ross Holden**  
School Board Attorney  
(434) 296-5820



**Phil Giaramita**  
Public Affairs & Strategic  
Communications Officer  
(434) 972-4049



TEAGAN PALMER | Walton



CHERRISH SMITH | Greer

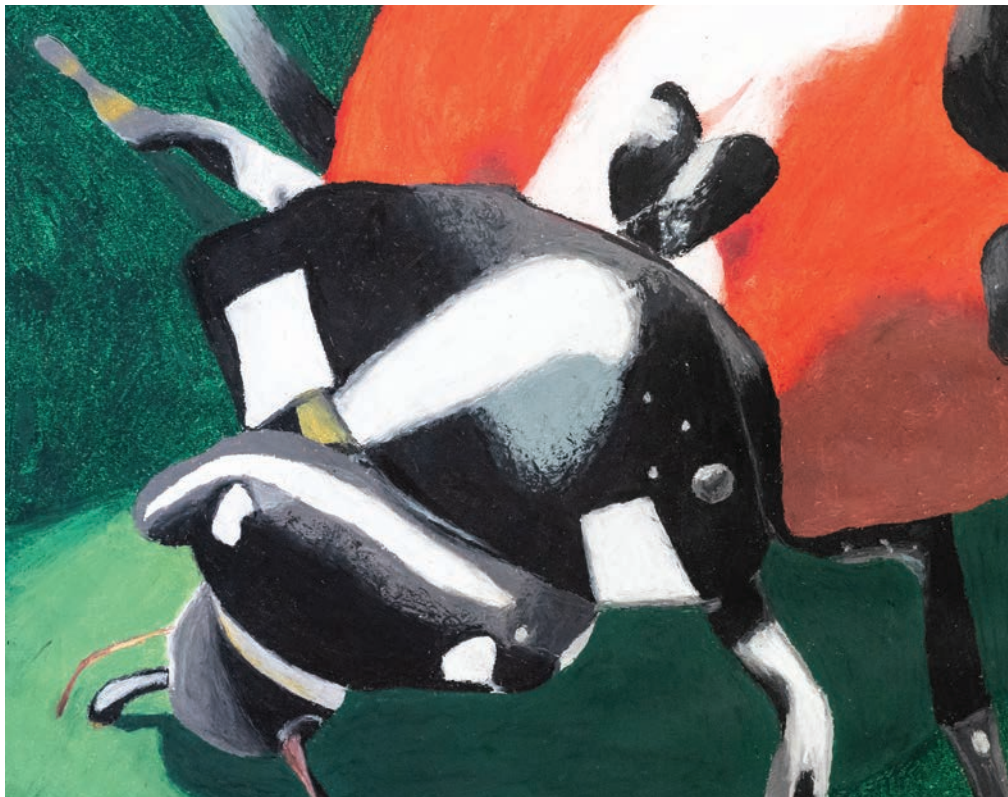


NATHAN DUNCAN | Crozet





JETT STREET | Virginia L. Murray



CAITLIN DAVIS | Henley

Albemarle County Public Schools

# POLICY STATEMENTS

## Anti-Racism

The Albemarle County School Board and Albemarle County Public Schools reject all forms of racism as destructive to the school division's mission, vision, values and goals. The Board is committed to the following principles:

1. Establishing and sustaining a school community that shares the collective responsibility to address, eliminate and prevent actions, decisions and outcomes that result from and perpetuate racism.
2. Eliminating inequitable practices and cultivating the unique gifts, talents and interests of every child to end the predictive value of social or cultural factors, such as race, class or gender, on student success.
3. Respecting and championing the diversity and life experiences of all community members to support the school division's mission, vision, values, goals and objectives.
4. Acknowledging that racism is often compounded by other forms of discrimination, including, but not limited to, those protective classes referenced in School Board Policy AC, *Nondiscrimination*.

## Nondiscrimination

Albemarle County Public Schools does not discriminate on the basis of sex, gender, race, color, national origin, disability, religion, ancestry, age, marital status, genetic information, or any other characteristic protected by law in its programs and activities, and provides equal access to the Boy Scouts of America, the Girl Scouts of the USA, and other designated youth groups.

**Students** who have questions or concerns regarding compliance with the school division's Nondiscrimination policy should contact:

Executive Director of Special Education & Student Services  
401 McIntire Road, 3rd Floor, Charlottesville, VA 22902  
(434) 296-5885

**Employees** who have questions or concerns regarding compliance with the school division's Nondiscrimination policy should contact:

Director of Human Resources  
401 McIntire Road, 1st Floor, Charlottesville, VA 22902  
(434) 296-5827







# AUGUST 2021

SUN	MON	TUE	WED	THU	FRI	SAT
1	2	3	4	5	6	7
8	9	10 New Teacher Academy (Aug. 10-13)	11	12	13	14
15	16 Teacher Workday/ Professional Development (PD) Day	17 Full Day of PD Open House for CATEC, Center I & ICTA	18 Teacher Workday/PD Day Open House for all middle schools & some elementary schools	19 Teacher Workday/PD Day Open House for all high schools, ESA, HMSA, MESA, Community Lab & some elem. schools	20 Teacher Workday/PD Day Open House for some elementary schools	21
22	23 First Day of School	24	25	26	27	28
29	30	31	1	2	3	4

## NOTES:

Note: Open House dates are  
subject to change. Individual  
schools will share event details.

### JULY 2021

S	M	T	W	T	F	S
				1	2	3
4	5	6	7	8	9	10
11	12	13	14	15	16	17
18	19	20	21	22	23	24
25	26	27	28	29	30	31

### SEPTEMBER 2021

S	M	T	W	T	F	S
			1	2	3	4
5	6	7	8	9	10	11
12	13	14	15	16	17	18
19	20	21	22	23	24	25
26	27	28	29	30		







# SEPTEMBER 2021

SUN	MON	TUE	WED	THU	FRI	SAT
29	30	31	1	2	3	4
5	6 Labor Day Holiday	7	8	9 Back-to-School events for all high schools, ESA, HMSA, MESA & Community Lab	10	11
12 Nat'l Arts in Education Week	13 Back-to-School events for Center I & ICTA	14 Back-to-School events for all middle schools	15	16	17	18
19	20	21	22 First Day of Autumn	23 Back-to-School events for all elementary schools	24	25
26	27 Morning reserved for PD (No School) Afternoon reserved for PLC Meetings	28	29	30	1	2

## NOTES:

Nat'l Hispanic Heritage Month is

observed Sept. 15 – Oct. 15.

Note: Back-to-School dates are

subject to change. Individual

schools will share event details.

## AUGUST 2021

S	M	T	W	T	F	S
1	2	3	4	5	6	7
8	9	10	11	12	13	14
15	16	17	18	19	20	21
22	23	24	25	26	27	28
29	30	31				

## OCTOBER 2021

S	M	T	W	T	F	S
					1	2
3	4	5	6	7	8	9
10	11	12	13	14	15	16
17	18	19	20	21	22	23
24	25	26	27	28	29	30
31						







# OCTOBER 2021

SUN	MON	TUE	WED	THU	FRI	SAT
26	27	28	29	30	1	2 Nat'l Custodian Day
3	4 Parent Conferences for all elementary schools (Oct. 4 - Nov. 3)	5 Parent Conferences for all high schools, ESA, HMSA, MESA & Community Lab	6 Int'l Walk to School Day	7 Parent Conferences for all middle schools	8	9
10	11 Nat'l School Lunch Week	12 Parent Conferences for all middle schools	13 Half-Day for Students Afternoon reserved for PLC Meetings	14 Parent Conferences for all high schools, ESA, HMSA, MESA & Community Lab	15	16
17	18 Nat'l School Bus Safety Week	19	20	21	22	23
24 31	25	26	27 Nat'l Mentoring Day	28 End of 1st Quarter	29 Full Day of PD (No School)	30

## NOTES:

Nat'l Hispanic Heritage Month is observed Sept. 15 - Oct. 15.

October is also Nat'l Bullying Prevention Month and

Nat'l Principals Month.

Note: Conference dates are subject to change. Individual schools will share event details.

## SEPTEMBER 2021

S	M	T	W	T	F	S
			1	2	3	4
5	6	7	8	9	10	11
12	13	14	15	16	17	18
19	20	21	22	23	24	25
26	27	28	29	30		

## NOVEMBER 2021

S	M	T	W	T	F	S
	1	2	3	4	5	6
7	8	9	10	11	12	13
14	15	16	17	18	19	20
21	22	23	24	25	26	27
28	29	30				







# NOVEMBER 2021

SUN	MON	TUE	WED	THU	FRI	SAT
31	1 Teacher Workday (No School) Parent Conferences for CATEC, Center I & ICTA (Nov. 1-5)	2 Reserved for Parent Conferences (No School) Election Day	3	4	5	6
7 Daylight Saving Time Ends (set clocks back 1 hour)	8	9	10 Half-Day for Students Afternoon reserved for PLC Meetings	11 Veterans Day	12	13
14	15	16	17 Education Support Professionals Day	18	19 Substitute Educators Day	20
21	22	23	24 Thanksgiving Holiday (Nov. 24-26)	25	26	27
28	29	30	1	2	3	4

NOTES:

---

---

---

---

---

---

---

---

OCTOBER 2021

S	M	T	W	T	F	S
					1	2
3	4	5	6	7	8	9
10	11	12	13	14	15	16
17	18	19	20	21	22	23
24 31	25	26	27	28	29	30

DECEMBER 2021

S	M	T	W	T	F	S
			1	2	3	4
5	6	7	8	9	10	11
12	13	14	15	16	17	18
19	20	21	22	23	24	25
26	27	28	29	30	31	







# DECEMBER 2021

SUN	MON	TUE	WED	THU	FRI	SAT
28	29	30	1	2 Nat'l Special Education Day	3	4
5	6	7	8 Half-Day for Students  Afternoon reserved for PLC Meetings	9	10	11
12	13	14	15	16	17	18
19	20 Winter Break (Dec. 20 - Jan. 3)	21 First Day of Winter	22	23	24	25
26	27	28	29	30	31 New Year's Day Holiday (Observed)	1

NOTES:

---

---

---

---

---

---

---

---

---

---

NOVEMBER 2021

S	M	T	W	T	F	S
	1	2	3	4	5	6
7	8	9	10	11	12	13
14	15	16	17	18	19	20
21	22	23	24	25	26	27
28	29	30				

JANUARY 2022

S	M	T	W	T	F	S
						1
2	3	4	5	6	7	8
9	10	11	12	13	14	15
16	17	18	19	20	21	22
23 30	24 31	25	26	27	28	29







# JANUARY 2022

SUN	MON	TUE	WED	THU	FRI	SAT
26	27	28	29	30	31	1 New Year's Day
2	3 Last Day of Winter Break	4	5	6	7	8
9	10	11	12	13	14	15
16	17 Martin Luther King, Jr. Day Holiday	18	19	20	21 Half-Day for Students; End of 2nd Quarter Afternoon reserved for PLC Meetings	22
23 30	24 Teacher Workday (No Students) 31	25	26	27	28	29

## NOTES:

---

---

---

---

---

---

---

---

---

---

### DECEMBER 2021

S	M	T	W	T	F	S
			1	2	3	4
5	6	7	8	9	10	11
12	13	14	15	16	17	18
19	20	21	22	23	24	25
26	27	28	29	30	31	

### FEBRUARY 2022

S	M	T	W	T	F	S
		1	2	3	4	5
6	7	8	9	10	11	12
13	14	15	16	17	18	19
20	21	22	23	24	25	26
27	28					







# FEBRUARY 2022

SUN	MON	TUE	WED	THU	FRI	SAT
30	31	1	2	3	4	5
6	7 Nat'l School Counseling Week	8	9	10	11	12
13	14	15	16 Half-Day for Students  Afternoon reserved for PLC Meetings	17	18	19
20	21	22	23 Parent Conferences for all high schools, ESA, HMSA, MESA & Community Lab	24	25	26
27	28	1	2	3	4	5

## NOTES:

February is Black History Month  
and Career and Technical  
Education Month.  
Note: Conference dates are  
subject to change. Individual  
schools will share event details.

## JANUARY 2022

S	M	T	W	T	F	S
						1
2	3	4	5	6	7	8
9	10	11	12	13	14	15
16	17	18	19	20	21	22
23 30	24 31	25	26	27	28	29

## MARCH 2022

S	M	T	W	T	F	S
		1	2	3	4	5
6	7	8	9	10	11	12
13	14	15	16	17	18	19
20	21	22	23	24	25	26
27	28	29	30	31		







# MARCH 2022

SUN	MON	TUE	WED	THU	FRI	SAT
27	28	1	2 Read Across America Day	3	4 Morning reserved for PD (No School) Afternoon reserved for PLC meetings	5
6	7 Nat'l School Breakfast Week Parent Conferences for CATEC, Center I & ICTA (March 7-11)	8	9	10	11	12
13 Daylight Saving Time Begins (advance clocks 1 hour)	14	15	16	17	18	19
20 First Day of Spring	21	22	23	24	25	26
27	28	29	30	31	1	2

## NOTES:

March is Equity in Education

Month, Music in Our Schools

Month, Women's History Month,  
and Youth Art Month.

## FEBRUARY 2022

S	M	T	W	T	F	S
		1	2	3	4	5
6	7	8	9	10	11	12
13	14	15	16	17	18	19
20	21	22	23	24	25	26
27	28					

## APRIL 2022

S	M	T	W	T	F	S
					1	2
3	4	5	6	7	8	9
10	11	12	13	14	15	16
17	18	19	20	21	22	23
24	25	26	27	28	29	30







# APRIL 2022

SUN	MON	TUE	WED	THU	FRI	SAT
27	28	29	30	31	1 Half-Day for Students; End of 3rd Quarter Half-Day Teacher Workday	2
3 Nat'l Library Week	4 Spring Break (April 4-8) Nat'l Assistant Principals Week	5	6	7	8	9
10	11 ACPS Building Services Professionals Appreciation Week	12	13	14	15	16
17 Nat'l Student Leadership Week	18 Public School Volunteer Week	19	20 Half-Day for Students Afternoon reserved for PLC meetings	21	22	23
24	25	26	27 Administrative Professionals Day	28	29	30

## NOTES:

April is School Library Month.

---

---

---

---

---

---

---

---

## MARCH 2022

S	M	T	W	T	F	S
		1	2	3	4	5
6	7	8	9	10	11	12
13	14	15	16	17	18	19
20	21	22	23	24	25	26
27	28	29	30	31		

## MAY 2022

S	M	T	W	T	F	S
1	2	3	4	5	6	7
8	9	10	11	12	13	14
15	16	17	18	19	20	21
22	23	24	25	26	27	28
29	30	31				







# MAY 2022

SUN	MON	TUE	WED	THU	FRI	SAT
1 Nat'l School Principals' Day	2 Nat'l Teacher Appreciation Week	3 Nat'l Teacher Day	4	5	6 School Lunch Hero Day	7
8	9	10	11 Nat'l School Nurse Day	12	13	14
15	16	17	18	19	20	21
22	23	24	25	26	27	28
29	30 Memorial Day Holiday	31	1	2	3	4

## NOTES:

---

---

---

---

---

---

---

---

---

---

### APRIL 2022

S	M	T	W	T	F	S
					1	2
3	4	5	6	7	8	9
10	11	12	13	14	15	16
17	18	19	20	21	22	23
24	25	26	27	28	29	30

### JUNE 2022

S	M	T	W	T	F	S
			1	2	3	4
5	6	7	8	9	10	11
12	13	14	15	16	17	18
19	20	21	22	23	24	25
26	27	28	29	30		







# JUNE 2022

SUN	MON	TUE	WED	THU	FRI	SAT
29	30	31	1	2	3	4
5	6	7	8	9	10 Last Day of School (Half-Day); End of 4th Quarter Half-Day Teacher Workday	11
12	13 Teacher Workday; Last Day of Work for Teachers	14	15	16	17	18
19 Juneteenth	20 Juneteenth Holiday (Observed)	21 First Day of Summer	22	23	24	25
26	27	28	29	30	1	2

NOTES:

---

---

---

---

---

---

---

---

---

---

MAY 2022

S	M	T	W	T	F	S
1	2	3	4	5	6	7
8	9	10	11	12	13	14
15	16	17	18	19	20	21
22	23	24	25	26	27	28
29	30	31				

JULY 2022

S	M	T	W	T	F	S
					1	2
3	4	5	6	7	8	9
10	11	12	13	14	15	16
17	18	19	20	21	22	23
24	25	26	27	28	29	30
31						







# JULY 2022

SUN	MON	TUE	WED	THU	FRI	SAT
26	27	28	29	30	1	2
3	4 Independence Day Holiday	5	6	7	8	9
10	11	12	13	14	15	16
17	18	19	20	21	22	23
24 31	25	26	27	28	29	30

NOTES:

---

---

---

---

---

---

---

---

---

---

JUNE 2022

S	M	T	W	T	F	S
			1	2	3	4
5	6	7	8	9	10	11
12	13	14	15	16	17	18
19	20	21	22	23	24	25
26	27	28	29	30		

AUGUST 2022

S	M	T	W	T	F	S
	1	2	3	4	5	6
7	8	9	10	11	12	13
14	15	16	17	18	19	20
21	22	23	24	25	26	27
28	29	30	31			







# AUGUST 2022

SUN	MON	TUE	WED	THU	FRI	SAT
31	1	2	3	4	5	6
7	8	9	10	11	12	13
14	15	16	17	18	19	20
21	22	23	24	25	26	27
28	29	30	31	1	2	3

NOTES:

---

---

---

---

---

---

---

---

---

---

JULY 2022

S	M	T	W	T	F	S
					1	2
3	4	5	6	7	8	9
10	11	12	13	14	15	16
17	18	19	20	21	22	23
24 31	25	26	27	28	29	30

SEPTEMBER 2022

S	M	T	W	T	F	S
				1	2	3
4	5	6	7	8	9	10
11	12	13	14	15	16	17
18	19	20	21	22	23	24
25	26	27	28	29	30	



# KEY ADVISORY GROUPS

Parent and citizen advisory groups offer a broad range of opportunities for community engagement with public education. For more information about our division-level advisory groups, including opportunities for contributing to their important work, please visit [www.k12albemarle.org/advisory](http://www.k12albemarle.org/advisory).

## Albemarle Education Association (AEA) Exchange Committee

Subset of representatives from the AEA, a local chapter of the Virginia Education Association. The committee works with the Superintendent and key leaders on issues of concern and importance to AEA members.

## Athletic Advisory Council

Serves as a forum for parents, students, and school officials to share ideas and exchange information in order to further advance the quality of the athletic student experience within ACPS.

## Budget Advisory Committee

Analyzes, evaluates and advises the Superintendent and division staff regarding budgeting practices and priorities from a business perspective. The committee is composed of business professionals with significant budgeting experience.

## Classified Employee Advisory Committee

Provides a two-way forum for classified employees to have input regarding potential employee policy creation and/or changes and to bring forward employee issues that could not be successfully addressed through existing channels.

## County Student Advisory Council

Represents the opinions of students in an advisory capacity to the School Board. Council members aim to better share and exchange ideas and solutions to common problems across schools and work to better the school system and the surrounding community.

## Equity & Diversity Advisory Committee

Advises the division on adopting and modifying policies and practices to address equity and opportunity gaps to improve student achievement. Committee members serve two-year terms.

## Long-Range Planning Advisory Committee (LRPAC)

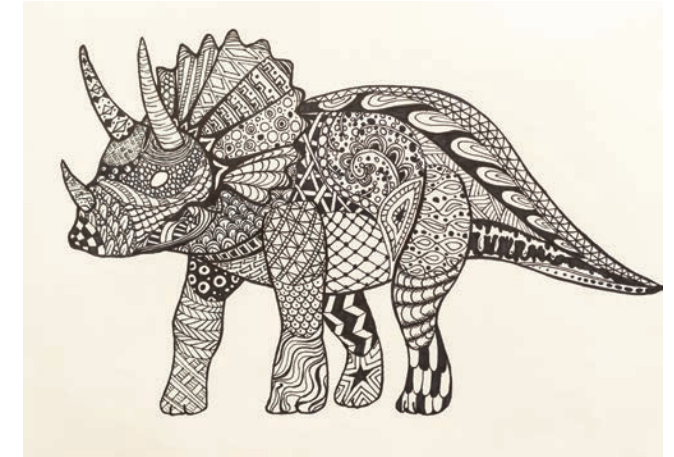
Informs and advises the Superintendent and School Board in the development of comprehensive, long-term plans for facilities needs in the most effective and efficient way and in support of the school division's strategic plan.

## Parent Council

Serves as a forum for parents, educators, and school officials to share ideas and exchange information in order to further advance the quality of the public education system within Albemarle County.



KIMBERLY DELACRUZ | Burley



MACKENZIE WHITLEY | western Albemarle

## School Health Advisory Board (SHAB)

Assists with developing health policy in the division and evaluating the status of school health, health education, the school environment, and health services.

## Special Education Advisory Committee (SEAC)

Comprised of parents of students who require special education services, educators in the field, and community members who have an interest in special education. The committee provides advice concerning the needs of children with disabilities receiving special education services and assists in the formulation and development of long-range plans for these children.

## Teacher Advisory Committee

Group of teachers, including a representative from each school, who meet with central staff to discuss items of interest to teachers and give feedback on county initiatives and programs.

## Title I Parent Advisory

Provides feedback and suggestions for ways Albemarle County can improve our Title I program.





GENEVIEVE CLARK | Brownsville



NORAH HEGGE | Baker-Butler

# INCLEMENT WEATHER DECISIONS

ACPS approaches inclement weather decisions with the safety of our students, staff, and other members of our community as our primary concern. We consider information from several sources to help us reach each decision, including:

- Road conditions for bus travel and student and staff drivers;
- Weather forecasts; and
- Assessments by law enforcement, the Virginia Department of Transportation, and other localities.

## Find Out About School Schedule Changes

Families and community members can learn the division's school schedule status during inclement weather in several ways:

### School Schedule Hotline

Community members may call (434) 296-5886 to listen to a prerecorded message about school operations for the day. This recording is updated by 5:30 a.m.

*Para español, llame al (434) 975-9332.*

### Electronic Alert: Phone, Email and/or Text

Parents and guardians are provided an opportunity at the start of each school year to enroll in the Electronic School Notification System to receive notifications from the school division by phone (landline or cellular), email and/or text. Parents and guardians may also enroll at any time or change their preferences by contacting their child's school.

### Albemarle County Public Schools Website

The division will activate our web alert system to help communicate school schedule changes. The system uses pop-up messages to alert website visitors to important information.

### Social Media

"Follow" us on Twitter at [www.twitter.com/k12albemarle](https://www.twitter.com/k12albemarle), or "Like" us on Facebook at [www.facebook.com/k12albemarle](https://www.facebook.com/k12albemarle).

### Local Media Outlets

School schedule changes are broadcast on several local radio and television stations, as well as local media websites.

For more information about school schedule changes due to inclement weather, please visit [www.k12albemarle.org/closings](https://www.k12albemarle.org/closings).



# SERVICE DIRECTORY

Included below are many of the most requested phone numbers for our services. For a more extensive list of services, including contact names and web page links, please visit our Directories web page at [www.k12albemarle.org/directories](http://www.k12albemarle.org/directories). For assistance locating the information you need, please call (434) 296-5820.

## A – B

Adult, Homeless & Migrant Education.....	(434) 296-3872
Albemarle County Parent Resource Center .....	(434) 296-5885
Assessment (Testing) .....	(434) 296-5820
Athletics.....	(434) 296-5820
Attendance Areas.....	(434) 973-5716
Bright Stars Preschool Program (Social Services Partnership).....	(434) 484-0940
Building Services (Custodial Services, Maintenance) .....	(434) 975-9340
Bus Routes.....	(434) 973-5716

## C – D

Capital Project Planning (Facilities Planning).....	(434) 296-5829
Child Nutrition Program (School Meals).....	(434) 295-0566
Communications .....	(434) 972-4049
Community Education: Open Doors.....	(434) 975-9451
Community Engagement.....	(434) 296-5820
Community Usage Hotline.....	(434) 975-9331
Culturally Responsive Teaching (CRT) .....	(434) 296-5820
Donations.....	(434) 296-5829
Driver Education.....	(434) 975-9450

## E – G

Early Childhood Special Education.....	(434) 296-5885
Elementary Education (pre-K through fifth grade) .....	(434) 296-5820
Environmental Management.....	(434) 975-9340
Equity Education.....	(434) 296-5820
Extended Day Enrichment Programs (EDEP) .....	(434) 296-5840
Facility Rental.....	(434) 975-9340
Families in Crisis Program.....	(434) 296-3872
Family Support Program (Social Services Partnership).....	(434) 972-4010
Fiscal Services (Budget, School Finance).....	(434) 296-5829
Freedom of Information Act (FOIA) Requests .....	(434) 972-4049
Gold Card Club .....	(434) 296-5820

## H – M

Head Start.....	(434) 295-3171 ext. 3008
Homeschool.....	(434) 296-5820
Human Resources.....	(434) 296-5827
International & ESOL Welcome Center .....	(434) 296-6517
Media Relations.....	(434) 972-4049

## P – R

Policies.....	(434) 972-4055
Preschool.....	(434) 296-5820
Professional Development for Classified Staff (LearnWell).....	(434) 296-5827
Professional Development for Instructional Staff.....	(434) 972-4021
Research and Survey Requests .....	(434) 296-5820

## S

School Board Information .....	(434) 972-4055
School Counseling.....	(434) 296-5820
School Health Services.....	(434) 296-5820
School Schedule Hotline.....	(434) 296-5886 for English; (434) 975-9332 for Spanish
Secondary Education (grades 6-12).....	(434) 296-5820
Social Media & Website Services.....	(434) 296-5820
Special Education.....	(434) 296-5885
Strategic Planning.....	(434) 296-5820
Student Registration .....	(434) 296-5820
Student Services (Mental Health and Wellness, Safety, Support) .....	(434) 296-5820
Superintendent's Office.....	(434) 296-5826

## T – W

Technology .....	(434) 872-4569
Technology Support (Service Desk) .....	(434) 975-9444
Transportation Services.....	(434) 973-5716
Volunteer & Business Partnerships .....	(434) 296-5820
Work-Based Learning & Internships .....	(434) 296-5820



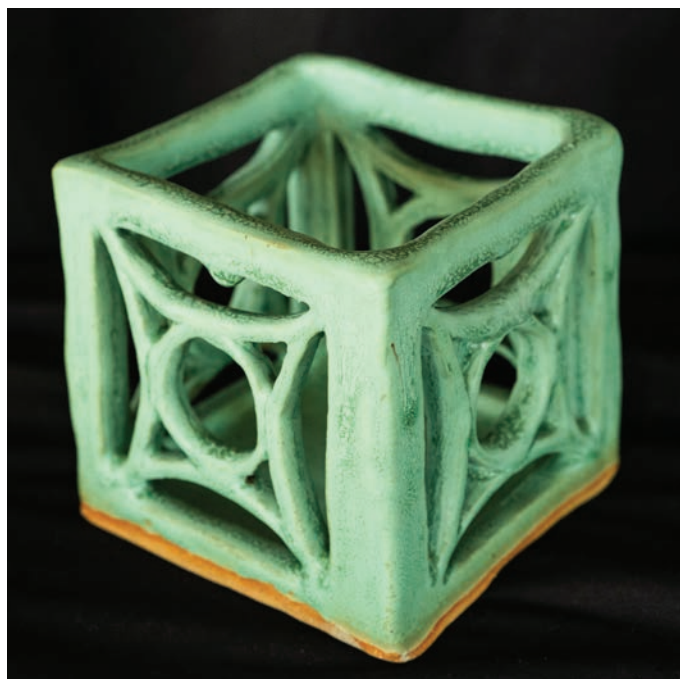
# SCHOOL DIRECTORY

School/Academy/Center	Address	Phone	Principal/Director
Agnor-Hurt Elementary School	3201 Berkmar Dr., Charlottesville, VA 22901	(434) 973-5211	Michael Irani
Baker-Butler Elementary School	2740 Proffit Rd., Charlottesville, VA 22911	(434) 974-7777	Seth Kennard
Broadus Wood Elementary School	185 Buck Mountain Rd., Earlysville, VA 22936	(434) 973-3865	Amy Morris
Brownsville Elementary School	5870 Rockfish Gap Tpke., Crozet, VA 22932	(434) 823-4658	Jason Crutchfield
Crozet Elementary School	1407 Crozet Ave., Crozet, VA 22932	(434) 823-4800	Gwedette Crummie
Greer Elementary School	190 Lambs Ln., Charlottesville, VA 22901	(434) 973-8371	Stephen Saunders
Hollymead Elementary School	2775 Powell Creek Dr., Charlottesville, VA 22911	(434) 973-8301	Craig Dommer
Meriwether Lewis Elementary School	1610 Owensville Rd., Charlottesville, VA 22901	(434) 293-9304	Jennifer Underwood
Mountain View Elementary School	1757 Avon St. Extended, Charlottesville, VA 22902	(434) 293-7455	Cyndi Wells
Murray Elementary School	3251 Morgantown Rd., Charlottesville, VA 22903	(434) 977-4599	C'ta DeLaurier
Red Hill Elementary School	3901 Red Hill School Rd., North Garden, VA 22959	(434) 293-5332	Nancy McCullen
Scottsville Elementary School	7868 Scottsville Rd., Scottsville, VA 24590	(434) 286-2441	Staci England
Stone-Robinson Elementary School	958 North Milton Rd., Charlottesville, VA 22911	(434) 296-3754	Angela Stokes
Stony Point Elementary School	3893 Stony Point Rd., Keswick, VA 22947	(434) 973-6405	Maureen Jensen
Woodbrook Elementary School	100 Woodbrook Dr., Charlottesville, VA 22901	(434) 973-6600	Kristen Williams
Burley Middle School	901 Rose Hill Dr., Charlottesville, VA 22903	(434) 295-5101	Kasaundra Blount
Henley Middle School	5880 Rockfish Gap Tpke., Crozet, VA 22932	(434) 823-4393	Beth Costa
Jouett Middle School	210 Lambs Ln., Charlottesville, VA 22901	(434) 975-9320	Ashby Johnson
Lakeside Middle School (formerly Sutherland)	2801 Powell Creek Dr., Charlottesville, VA 22911	(434) 975-0599	Megan Wood
Walton Middle School	4217 Red Hill Rd., Charlottesville, VA 22903	(434) 977-5615	Josh Walton
Albemarle High School	2775 Hydraulic Rd., Charlottesville, VA 22901	(434) 975-9300	Darah Bonham
Monticello High School	1400 Independence Way, Charlottesville, VA 22902	(434) 244-3100	Rick Vrhovac
Western Albemarle High School	5941 Rockfish Gap Tpke., Crozet, VA 22932	(434) 823-8700	Jennifer Sublette
Community Lab School (grades 6-12)	1200 Forest St., Charlottesville, VA 22903	(434) 296-3090	Chad Ratliff
Virtual School (grades K-12)	401 McIntire Rd., Charlottesville, VA 22902	(434) 296-5820	Reed Gillespie
Environmental Studies Academy (ESA)	5941 Rockfish Gap Tpke., Crozet, VA 22932	(434) 823-8700	Adam Mulcahy
Health and Medical Sciences Academy (HMSA)	1400 Independence Way, Charlottesville, VA 22902	(434) 244-3100	Jeremy Dove
Information and Communication Technology Academy (ICTA)	1180 Seminole Trl., Ste. 225, Charlottesville, VA 22901	(434) 244-8900	Michael Craddock
Math, Engineering & Science Academy (MESA)	2775 Hydraulic Rd., Charlottesville, VA 22901	(434) 975-9300	Tony Wayne
Center for Learning & Growth	225 Lambs Ln., Charlottesville, VA 22901	(434) 974-8070	Ashley Struzik
Center I	1180 Seminole Trl., Ste. 225, Charlottesville, VA 22901	(434) 244-8900	Michael Craddock
Post High	915 Henry Ave., Charlottesville, VA 22903	(434) 977-4610	Ashley Struzik
Charlottesville Albemarle Technical Education Center (CATEC)	1000 East Rio Rd., Charlottesville, VA 22901	(434) 973-4461	Stephanie Carter
Ivy Creek School	227 Lambs Ln., Charlottesville, VA 22901	(434) 975-9420	Kelly Hughes
Piedmont Regional Education Program	227 Lambs Ln., Charlottesville, VA 22901	(434) 975-9400	Angela Neely





OLIVIA ST. AMAND | Albemarle



MARY GOVAN | Albemarle



CHARLOTTE DAGLI | Monticello



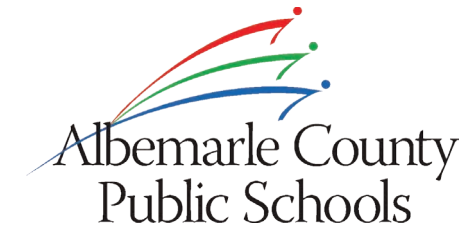
ANNA HERNDON | Monticello



HAYLEY SHIFFLETT | Monticello



# 2021-22 CALENDAR-AT-A-GLANCE



JULY 2021							AUGUST							SEPTEMBER							
S	M	T	W	T	F	S	S	M	T	W	T	F	S	S	M	T	W	T	F	S	
					1	2	3	1	2	3	4	5	6	7	5	6	7	8	9	10	11
4	5	6	7	8	9	10	8	9	10	11	12	13	14	12	13	14	15	16	17	18	
11	12	13	14	15	16	17	15	16	17	18	19	20	21	19	20	21	22	23	24	25	
18	19	20	21	22	23	24	22	23	24	25	26	27	28	26	27	28	29	30			
25	26	27	28	29	30	31	29	30	31												

OCTOBER							NOVEMBER							DECEMBER						
S	M	T	W	T	F	S	S	M	T	W	T	F	S	S	M	T	W	T	F	S
					1	2		1	2	3	4	5	6				1	2	3	4
3	4	5	6	7	8	9	7	8	9	10	11	12	13	5	6	7	8	9	10	11
10	11	12	13	14	15	16	14	15	16	17	18	19	20	12	13	14	15	16	17	18
17	18	19	20	21	22	23	21	22	23	24	25	26	27	19	20	21	22	23	24	25
24	25	26	27	28	29	30	28	29	30					26	27	28	29	30	31	
31																				

JANUARY 2022							FEBRUARY							MARCH							
S	M	T	W	T	F	S	S	M	T	W	T	F	S	S	M	T	W	T	F	S	
						1			1	2	3	4	5				1	2	3	4	5
2	3	4	5	6	7	8	6	7	8	9	10	11	12	6	7	8	9	10	11	12	
9	10	11	12	13	14	15	13	14	15	16	17	18	19	13	14	15	16	17	18	19	
16	17	18	19	20	21	22	20	21	22	23	24	25	26	20	21	22	23	24	25	26	
23	24	25	26	27	28	29	27	28						27	28	29	30	31			
30	31																				

APRIL							MAY							JUNE						
S	M	T	W	T	F	S	S	M	T	W	T	F	S	S	M	T	W	T	F	S
					1	2	1	2	3	4	5	6	7				1	2	3	4
3	4	5	6	7	8	9	8	9	10	11	12	13	14	5	6	7	8	9	10	11
10	11	12	13	14	15	16	15	16	17	18	19	20	21	12	13	14	15	16	17	18
17	18	19	20	21	22	23	22	23	24	25	26	27	28	19	20	21	22	23	24	25
24	25	26	27	28	29	30	29	30	31					26	27	28	29	30		

## 182 SCHOOL DAYS

Quarter 1 = 47 days  
 Quarter 2 = 43 days  
 Quarter 3 = 48 days  
 Quarter 4 = 44 days

## CALENDAR KEY

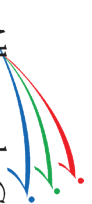
- Holiday: July 5; Sept 6; Nov 24-26; Dec 20-31; Jan 3, 17; April 4-8; May 30; June 20
- New Teacher Academy: Aug 10-13
- Combination Teacher Workday/Professional Development (PD) Day: Aug 16, 18, 19, 20
- Full day of PD (no school for students): Aug 17; Oct 29 (Making Connections will be held Oct 29)
- First day of school for students: Aug 23
- First half of day reserved for PD; second half of day reserved for Professional Learning Community (PLC) meetings (no school for students): Sept 27; March 4
- Students will learn in person for first half of day; second half of day reserved for PLC meetings: Oct 13; Nov 10; Dec 8; Jan 21; Feb 16; April 20
- End of Quarter: Oct 28; Jan 21; April 1; June 10
- Full day for Teacher Workday (no school for students): Nov 1; Jan 24; June 13
- Reserved for Parent Conferences (no school for students): Nov 2
- Students will learn in person for first half of day; second half of day reserved for Teacher Workday: April 1, June 10
- Last day of school for students (half-day in person): June 10
- Last day of work for teachers: June 13

Visit our Calendars web page at [www.k12albemarle.org/calendar](http://www.k12albemarle.org/calendar) to learn about our annual calendar development process and to access our division-level and school-based event calendars, the holiday schedule for 12-month employees, and other important dates.

Approved April 1, 2021



Connect with Us!



Albemarle County  
Public Schools  
[www.k12albemarle.org](http://www.k12albemarle.org)



[www.facebook.com/k12albemarle](https://www.facebook.com/k12albemarle)



[www.twitter.com/k12albemarle](https://www.twitter.com/k12albemarle)



[www.youtube.com/k12albemarle](https://www.youtube.com/k12albemarle)

NON-PROFIT ORG.  
U.S. POSTAGE

**PAID**

CHARLOTTESVILLE, VA  
PERMIT NO. 216



Albemarle County Public Schools  
401 McIntire Road, 3rd Floor  
Charlottesville, VA 22902-4596



DILYN CARTER | *Meriwether Lewis*

## *COVID-19 Response*

Whether you're looking for the ACPs COVID-19 Dashboard; our COVID-19 screening tools, our updated mask policy; information about our mitigation strategies; or local, state and federal COVID-19 resources, you can find it all on our COVID-19 Response website at [www.k12albemarle.org/covid](http://www.k12albemarle.org/covid).

