



Welcome to  
**Memorial High School**  
NEW PARENT ORIENTATION

# The Spring Branch Way



- **EVERY CHILD** • **COLLECTIVE GREATNESS** • **COLLABORATIVE SPIRIT**
- **LIMITLESS CURIOSITY** • **MORAL COMPASS**



THE  
MUSTANG  
WAY



**M**

## **MORALITY**

**Morality is the human attempt to define what is right and wrong about our actions and thoughts, and what is good and right about being who we are.**



**U**

## **UNDERSTANDING**

**Understanding is the ability to be sympathetically aware of other people's feelings and respond with tolerance and forgiveness.**



**S**

## **SPIRIT**

**Spirit is the sense of identity,  
community, and enthusiasm  
shared by members of a  
community**



**T**

## **TRUTH**

Truth refers to a facet of moral character and encourages integrity and honesty in all situations.



**A**

## **APPRECIATION**

**Appreciation is the ability to understand and acknowledge the worth, quality, or importance of something or someone.**





**N**

## **NOTEWORTHINESS**

**Noteworthiness refers to the pride and humility associated with being recognized as interesting, remarkable, or significant in some way.**



**G**

## **GRIT**

**Grit is persistence toward a purpose or action that you have decided to embark upon in the face of all sorts of difficulties.**



**S**

## **SELF-RESPECT**

**Self-Respect, at its simplest level, is making choices that allow you to feel your best and represent your best self.**



**“Darkness cannot drive out  
darkness; only light can do that.  
Hate cannot drive out hate; only  
love can do that”**

***Martin Luther King***

# Administrative Team

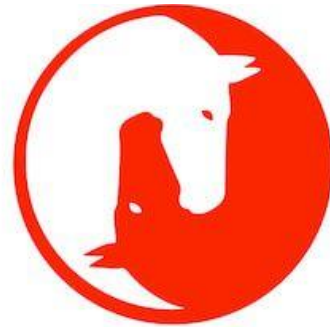
<b>Lisa Weir</b>	Building Principal	Ext. 2500	<a href="mailto:Lisa.Weir@springbranchisd.com">Lisa.Weir@springbranchisd.com</a>
<b>Catherine Pavone</b>	Associate Principal	Ext. 2537	<a href="mailto:Catherine.Pavone@springbranchisd.com">Catherine.Pavone@springbranchisd.com</a>
<b>Paul Suess</b>	11 <sup>th</sup> Grade Principal	Ext. 2536	<a href="mailto:Paul.Suess@springbranchisd.com">Paul.Suess@springbranchisd.com</a>
<b>Jennifer Young</b>	12 <sup>th</sup> Grade Principal	Ext. 2512	<a href="mailto:Jennifer.Young@springbranchisd.com">Jennifer.Young@springbranchisd.com</a>
<b>Buffie Matthews</b>	9 <sup>th</sup> Grade Principal	Ext. 2511	<a href="mailto:Buffie.Matthews@springbranchisd.com">Buffie.Matthews@springbranchisd.com</a>
<b>Greg Bowhuis</b>	10 <sup>th</sup> Grade Principal	Ext. 2708	<a href="mailto:Gregory.Bowhuis@springbranchisd.com">Gregory.Bowhuis@springbranchisd.com</a>

# Counseling Team

<b>Amina Johnson</b>	A-CI	Ext. 2509	<a href="mailto:Amina.Johnson@springbranchisd.com">Amina.Johnson@springbranchisd.com</a>
<b>Kelly Turner</b>	Co-Go	Ext. 2538	<a href="mailto:Kelly.Turner@springbranchisd.com">Kelly.Turner@springbranchisd.com</a>
<b>Steven Nickerson</b>	Gr-La	Ext. 2514	<a href="mailto:Steven.Nickerson@springbranchisd.com">Steven.Nickerson@springbranchisd.com</a>
<b>Jackie Vega</b>	Admin Asst. to Red Office	Ext. 2519	<a href="mailto:Marie.Vega@springbranchisd.com">Marie.Vega@springbranchisd.com</a>
<b>Stephanie Jackson</b>	Le-N	Ext. 2552	<a href="mailto:Stephanie.Jackson2@springbranchisd.com">Stephanie.Jackson2@springbranchisd.com</a>
<b>Kate Wright</b>	O-Si	Ext. 2545	<a href="mailto:Kate.Wright@springbranchisd.com">Kate.Wright@springbranchisd.com</a>
<b>Stephanie Renfrow</b>	Sk-Z	Ext. 2551	<a href="mailto:Stephanie.Renfrow@springbranchisd.com">Stephanie.Renfrow@springbranchisd.com</a>
<b>Haley Zwerneman</b>	Admin Asst. to Gray Office	Ext. 2518	<a href="mailto:Haley.Zwerneman@springbranchisd.com">Haley.Zwerneman@springbranchisd.com</a>
<b>Jennifer Mikes</b>	College Rep/Scholarship Asst.	Ext. 2516	<a href="mailto:Jennifer.Mikes@springbranchisd.com">Jennifer.Mikes@springbranchisd.com</a>
<b>Karen Mintsioulis</b>	STAT/504 Facilitator	Ext. 2546	<a href="mailto:Karen.Mintsioulis@springbranchisd.com">Karen.Mintsioulis@springbranchisd.com</a>
<b>Heather Mitcham</b>	Special Education Facilitator	Ext.2513	<a href="mailto:Heather.Mitcham@springbranchisd.com">Heather.Mitcham@springbranchisd.com</a>
<b>Christi Tullos</b>	Wellness Counselor	Ext. 2553	<a href="mailto:Christi.Tullos@springbranchisd.com">Christi.Tullos@springbranchisd.com</a>
<b>Precious Leonard</b>	Wellness Counselor	Ext. 2520	<a href="mailto:Precious.Leonard@springbranchsid.com">Precious.Leonard@springbranchsid.com</a>

# Wellness Center

- Located in Aqua (across from the textbook room)
- Provide students in crisis with interventions that alleviate emotional and behavioral challenges, enhance coping skills, improve student emotional and physical health, and in turn, scholastic achievement
- Interventions target conflict in the home, grief and loss, developmental concerns, Identity issues, verbal or physical aggression, anxiety, withdrawal, suspected drug/alcohol use, and unusual behavior.
- Children in need of these counseling services are identified by referrals from school principals and teachers, and parents.
- Please click the logo below to access the MHS CIS webpage!



mustangs4mustangs

## Registration/Attendance

<b>Bailey Glynn</b>	Registrar	Ext. 2504	<a href="mailto:Bailey.Glynn@springbranchisd.com">Bailey.Glynn@springbranchisd.com</a>
<b>Arena Pesqueira</b>	Admin Asst. to Registrar	Ext. 2503	<a href="mailto:julieta.dominguezpesqueira@springbranchisd.com">julieta.dominguezpesqueira@springbranchisd.com</a>
<b>Janie Sosa</b>	Attendance Clerk (9 <sup>th</sup> /11 <sup>th</sup> )	Ext. 2506	<a href="mailto:Janie.Sosa@springbranchisd.com">Janie.Sosa@springbranchisd.com</a>
<b>Rhonda Reese</b>	Attendance Clerk (10 <sup>th</sup> /12 <sup>th</sup> )	Ext. 2505	<a href="mailto:Rhonda.Reese@springbranchisd.com">Rhonda.Reese@springbranchisd.com</a>



# PTA

- President - Suzanne Farrow
- Click [here](#) for the PTA website
- Horseshoe Fund
- The Mustang Express
- Student Directory
- Provides numerous volunteer opportunities in the school
- First PTA Meeting - August 18<sup>th</sup> at 9:00am at the Memorial Church of Christ (across the street from MHS)



# Booster Club

- Adam and Suzanne Stiles- Presidents
- Website: [Booster Club](#)
- Freshman and New Families Coffee -  
August 24<sup>th</sup> at 9:00AM at 35 Sandalwood
- Auction - November 5



# Communication

- Skyward Family Access
- Twitter @MHShouston
- [My School Bucks](#)
- PTA weekly email newsletter “The Mustang Express”
- School website <http://mhs.springbranchisd.com/>
- Campus Events calendar
- Open House - September 7<sup>th</sup> at 6:30PM



# Bell Schedule

1st	7:45 – 8:35
2nd	8:40 – 9:30
3rd	9:35 – 10:25
4th	10:30 – 11:20
5th	11:25 – 12:15
6th	12:20 – 1:10
7th	1:15 – 2:05
8th	2:10 – 3:00

# Mustang Cafe

- Hub of the School
- Student Center/Commons
- Lunch is the same length as a class period
- Lunch is during periods 5 and 6
- Study, collaborate, see your counselor, go to the library
- No lunch deliveries due to construction



# Pep Rally Days

## PEP RALLY SCHEDULE

1 <sup>st</sup>	7:45 – 8:30 AM
2 <sup>nd</sup>	8:35 – 9:20 AM
3 <sup>rd</sup>	9:25 – 10:10 AM
PR	10:15 – 10:50 AM
4 <sup>th</sup>	10:55 – 11:40 AM
5 <sup>th</sup>	11:45 – 12:30 PM
6 <sup>th</sup>	12:35 – 1:20 PM
7 <sup>th</sup>	1:25 – 2:10 PM
8 <sup>th</sup>	2:15 – 3:00 PM

Date	Theme
<b>Aug 27</b>	Beach
<b>Oct 1</b>	Homecoming
<b>Oct 15</b>	Camo
<b>Nov 5</b>	Color Wars
<b>Jan 14</b>	Rock n Roll

# Advisory Days

## ADVISORY SCHEDULE

1<sup>st</sup> 7:45 – 8:30 AM

2<sup>nd</sup> 8:35 – 9:20 AM

3<sup>rd</sup> 9:25 – 10:10 AM

ADV 10:15 – 10:50 AM

4<sup>th</sup> 10:55 – 11:40 AM

5<sup>th</sup> 11:45 – 12:30 PM

6<sup>th</sup> 12:35 - 1:20 PM

7<sup>th</sup> 1:25 - 2:10 PM

8<sup>th</sup> 2:15 - 3:00 PM

- Assist students in monitoring their own academic progress
- Encourage students' academic, personal, and social development
- Provide guidance in post-secondary planning
- Communicate with parents / guardians of students
- Provide an advocate for every student
- Guest Speakers
- Advisory Lessons

# Late Arrival Days

## LATE ARRIVAL SCHEDULE

1<sup>st</sup> 9:45 - 10:28 AM

2<sup>nd</sup> 10:33 - 10:10 AM

3<sup>rd</sup> 10:15 - 10:59 AM

4<sup>th</sup> 11:04 - 11:48 AM

5<sup>th</sup> 11:53 - 12:36 AM

6<sup>th</sup> 12:41 - 1:24 PM

7<sup>th</sup> 1:29 - 2:12 PM

8<sup>th</sup> 2:17 - 3:00 PM

- September 22
- November 2
- February 9
- March 30

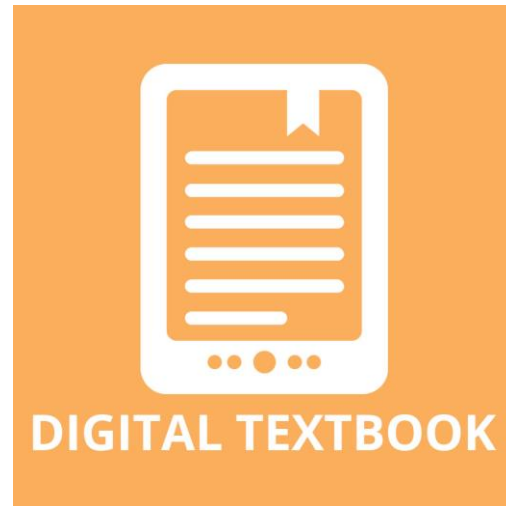


# Grading Periods

1 <sup>st</sup> 9 weeks	2 <sup>nd</sup> 9 weeks	3 <sup>rd</sup> 9 weeks	4 <sup>th</sup> 9 weeks
Progress Report September 3	Progress Report October 27	Progress Report January 24	Progress Report April 8
Progress Report September 24	Progress Report November 19	Progress Report February 18	Progress Report May 2
Report Card October 7	Report Card December 17	Report Card March 11	Report Card May 26



# Learning Tools

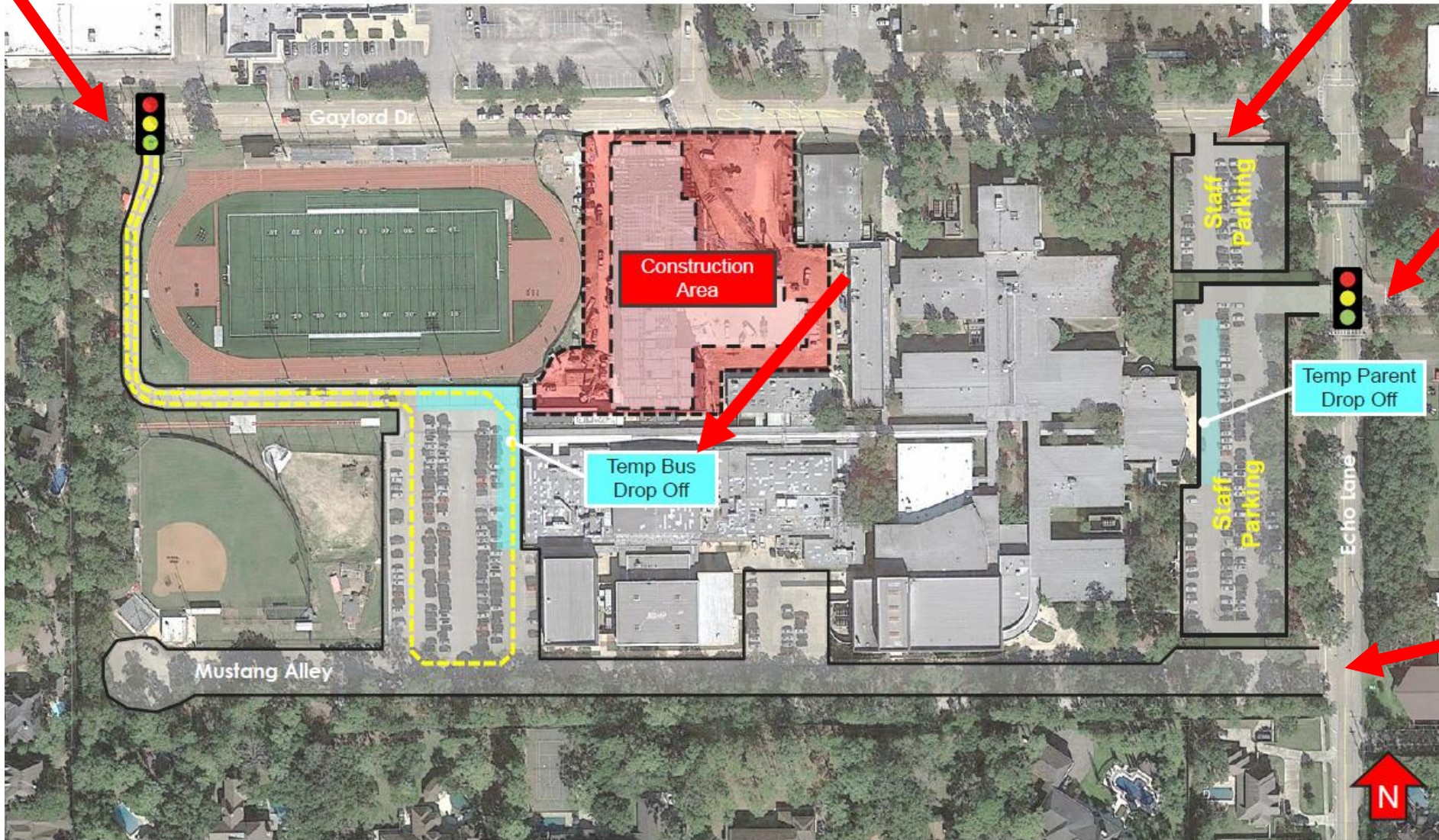




Student Drivers and Bus Entrance

Staff Only Entrance

Parent Drop Off



Construction Area

Temp Bus Drop Off

Temp Parent Drop Off

Staff Parking

Staff Parking

Gaylord Dr

Mustang Alley

Echo Lane

N

Student and Staff Entrance





**Questions?**