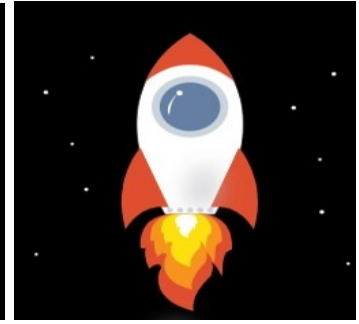




# Bell Schedule 2021-2022



First Bell	7:20 a.m. (Breakfast Begins – Served in the Classroom)
Tardy Bell	7:40 a.m.
Announcements	7:40 – 7:45 a.m. (5) (Breakfast Ends)
1 <sup>st</sup> Period	7:45 – 8:30 a.m. (45)
2 <sup>nd</sup> Period	8:34 – 9:19 a.m. (45)
3 <sup>rd</sup> Period	9:23 – 10:08 a.m. (45)
4 <sup>th</sup> Period	10:12 – 10:57 a.m. (45)
<b>6<sup>th</sup> Grade LUNCH</b>	
5 <sup>th</sup> Period	10:57 – 11:29 a.m.(32) 7 <sup>th</sup> 11:01–11:46 a.m.(45) 8 <sup>th</sup> 11:01–11:46 a.m.(45)
<b>7<sup>th</sup> Grade LUNCH</b>	
6 <sup>th</sup> Period	6 <sup>th</sup> 11:33–12:18 p.m.(45) 11:46 – 12:18 p.m.(32) 8 <sup>th</sup> 11:50–12:35 p.m.(45)
<b>8<sup>th</sup> Grade LUNCH</b>	
7 <sup>th</sup> Period	6 <sup>th</sup> 12:22–1:07 p.m.(45) 7 <sup>th</sup> 12:22 – 1:07 p.m.(45) 12:35–1:07 p.m.(32)
8 <sup>th</sup> Period	1:11 – 1:56 p.m. (45)
9 <sup>th</sup> Period	2:00 – 2:50 p.m. (50)

**We are LAUNCH ready!!!**