

LEA Name : Eastern Lancaster County SD

Address : 669 E Main St

New Holland , PA 17557

County : Lancaster

AUN Number : 113362303

LEA Type : SD

Annual Financial Report
Accuracy Certification Statement

For Fiscal Year Ending

6/30/2017

Pennsylvania Department of Education

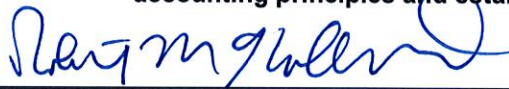
&

Office of Comptroller Operations

PDE-2056: Intermediate Unit

PDE-2057: School District, AVTS/CTC, Charter School,
and Special Program Jointure

CERTIFICATION: By signing this page I agree that the electronic data submitted is a complete and accurate statement of the financial operations and status of the local education agency for the fiscal year. It has been prepared in accordance with generally accepted accounting principles and established Commonwealth of PA reporting guidelines.



Chief School Administrator Signature

10-30-17

Date



Board Secretary Signature

10-30-17

Date

Keith D Ramsey

Contact Person

keith_ramsey@elanco.org

Contact Person E-mail Address

(717)354-1507

Ext :

Contact Person Telephone Number

(717)351-1408

Contact Person Fax Number

Audit Certification
Annual Financial Report:
For Fiscal Year Ending **6/30/2017**
(Pursuant to PA School Code Section 218(b))

LEA Name : Eastern Lancaster County SD
AUN Number : 113362303
County : Lancaster

Audit Certification Due: 12/31/2017

This certification is applicable to the Annual Financial Report data submitted
through the Consolidated Financial Reporting System on: 10-30-17

Date

Auditing Firm: **BBD, LLP**
1835 MARKET STREET, 26TH FLOOR
PHILADELPHIA, PA 19103

Auditor Contact Name: **CARL E. HOGAN, CPA**
Auditor Phone: **1-215-567-7770**
Auditor E-mail: **chogan@bbdcpa.com**

CERTIFICATION: By signing this page I agree that the financial statements of the school have been properly audited as noted above pursuant to Article XXIV, and in the auditor's professional opinion, the Annual Financial Report (PDE-2057) submitted on the date referenced is materially consistent with the audited financial statements.

Chief School Administrator


Signature

10-30-17
Date

Board Secretary


Signature

10-30-17
Date

Keith D Ramsey

Contact Person

keith_ramsey@elanco.org

Contact Person E-mail Address

(717)354-1507

Ext :

Contact Person Telephone Number

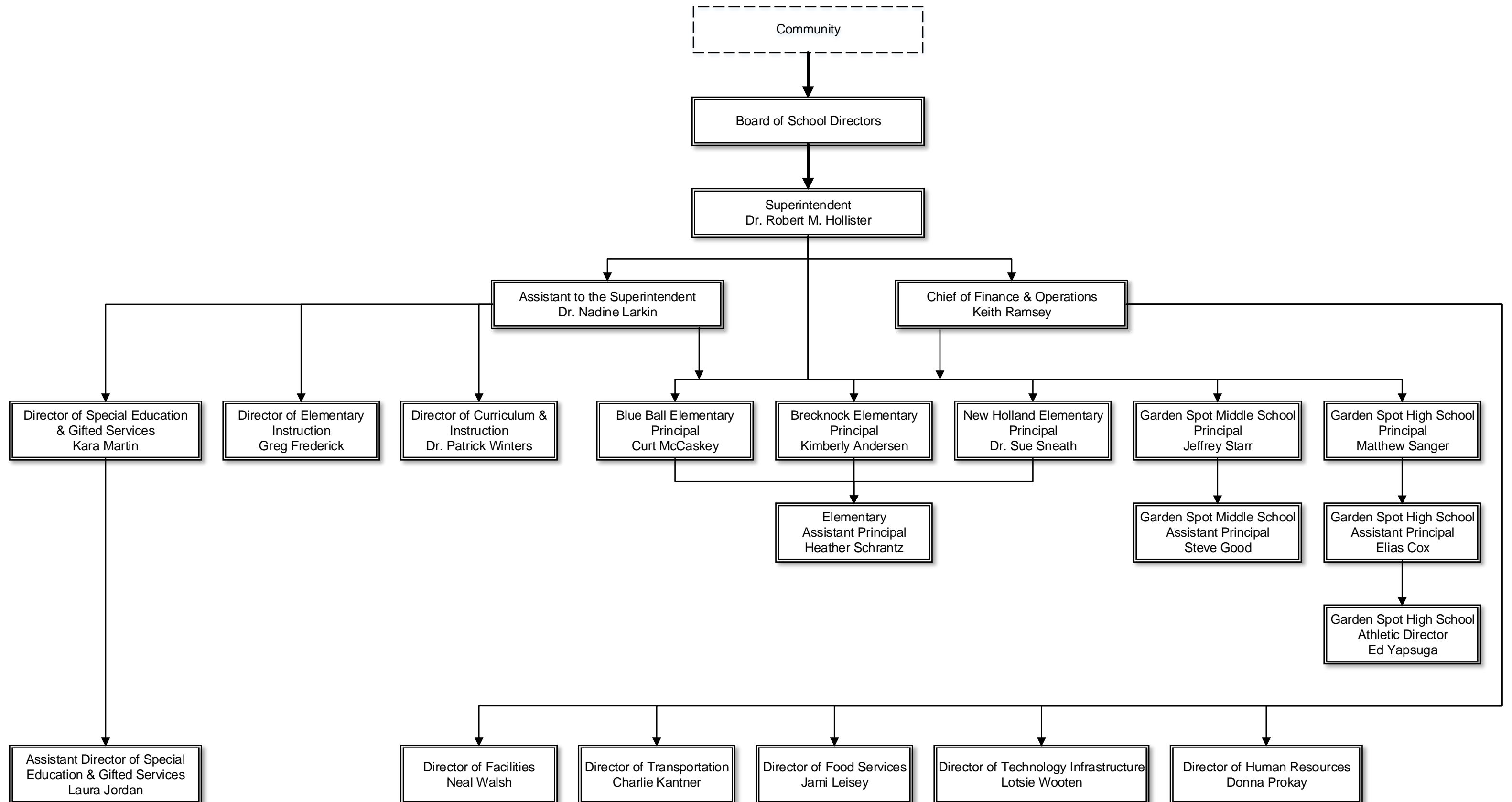
(717)351-1408

Contact Person Fax Number



Eastern Lancaster County School District

Organizational Chart Roles and Responsibilities



<u>Val Number</u>	<u>Description</u>	<u>Justification</u>
30550	Revenue Detail: Tax Revenue Data must be reported consistently for current and prior year. Correct the data or enter a justification. 6120, Current AFR Rev Detail: \$0.00 6120, Prior AFR Rev Detail: \$108,871.61	The District repealed the Per Capita Tax Levy beginning with the 2016-17 year
30625	Revenue Detail: Current Tax Revenue amount cannot exceed 50% variance from prior year amount. Correct the data or enter a justification. 6120, Current AFR Rev Detail: \$0.00 6120, Prior AFR Rev Detail: \$108,871.61	The District repealed the Per Capita Tax Levy beginning with the 2016-17 year
41140	Expenditure Detail - There is an entry in function 5150- 990 object "Other". Please explain what constitutes "Other". Expenditure 5150-990, Fund 39: \$82,600.00	This amount represents the Bond Discount on the issuance of the 2017 Bonds
41590	Expenditure Detail, Salaries (Object 100) and Benefits (Object 200 series): Amounts must be entered for both Salaries and Benefits. Function 2390, Object 100: \$0.00 Function 2390, Object 200: \$24,614.29	This amount represents the District's obligation on the Purchase of Service for PSERS
50230	SOIN: A Governmental Fund Authority Building Obligation (CIB) contains entries for both Debt at Beginning of Fiscal Year, and Additions During Fiscal Year. Correct data or enter a justification.	These are CTC Bonds and the District's Allocation increased for this year and the increase in allocation was in excess of current year payments.
50450	SESS - 2350 Legal and Accounting Services: SESS Schedule amounts for Special Education vary from prior year by 40% or more. Correct the data or enter a justification. SESS Schedule 2350: \$13,322.15 Prior Year SESS Schedule 2350: \$8,183.94	The District utilized more legal services for Special Education matters in the current year than in the prior year.

Amounts Expressed in Whole Dollars		<u>General Fund</u> <u>(10)</u>	<u>Public Purpose Trust</u> <u>(27)</u>	<u>Other Compt Approved</u> <u>(28)</u>	<u>Athletic / Activity</u> <u>(29)</u>	<u>Capital Reserve (690.</u> <u>1850)</u> <u>(31)</u>
Assets And Deferred Outflows Of Resources						
Assets						
0100	Cash and Cash Equivalents	5,574,126				
0110	Investments	9,566,860				
0120	Taxes Receivable	1,109,669				
0130	Due From Other Funds					
0141	Due From Other Governments	1,624,855				
0142	State Revenue Receivable	2,422,999				
0143	Federal Revenue Receivable	747,473				
0145	Other Intergovernmental Revenue Receivable					
0146	Due from Primary Government					
0147	Due from Component Unit					
0150	Other Receivables	20,726				
0170	Inventories					
0180	Prepaid Expenses (Expenditures)					
0190	Other Current Assets					
Total Assets		\$21,066,708				
0910	Deferred Outflows of Resources					
Total Assets And Deferred Outflows Of Resources		\$21,066,708				

LEA : 113362303 Eastern Lancaster County SD

Printed 12/7/2017 11:18:49 AM

Amounts Expressed in Whole Dollars		<u>Capital Reserve (1431</u> <u>(32)</u>	<u>Other Capital Projects</u> <u>Fund</u> <u>(39)</u>	<u>Debt Service</u> <u>(40)</u>	<u>Permanent</u> <u>(90)</u>	<u>Total Governmental</u> <u>Funds</u>
Assets And Deferred Outflows Of Resources						
Assets						
0100	Cash and Cash Equivalents	340,419				5,914,545
0110	Investments	5,745,994				15,312,854
0120	Taxes Receivable					1,109,669
0130	Due From Other Funds	4,525,238				4,525,238
0141	Due From Other Governments					1,624,855
0142	State Revenue Receivable					2,422,999
0143	Federal Revenue Receivable					747,473
0145	Other Intergovernmental Revenue Receivable					
0146	Due from Primary Government					
0147	Due from Component Unit					
0150	Other Receivables					20,726
0170	Inventories					
0180	Prepaid Expenses (Expenditures)					
0190	Other Current Assets					
Total Assets		\$10,611,651				\$31,678,359
0910	Deferred Outflows of Resources					
Total Assets And Deferred Outflows Of Resources		\$10,611,651				\$31,678,359

Amounts Expressed in Whole Dollars	<u>General Fund</u> <u>(10)</u>	<u>Public Purpose Trust</u> <u>(27)</u>	<u>Other Compt Approved</u> <u>(28)</u>	<u>Athletic / Activity</u> <u>(29)</u>	<u>Capital Reserve (690.</u> <u>1850)</u> <u>(31)</u>
Liabilities And Deferred Inflows Of Resources And Fund Balances					
Liabilities					
0400 Due to Other Funds	4,536,950				
0411 Due to Other Governments					
0412 Due to Primary Government					
0413 Due to Component Unit					
0420 Accounts Payable	628,205				
0430 Contracts Payable					
0440 Current Portion of Long-Term Debt					
0450 Short-Term Payables					
0461 Accrued Salaries and Benefits	6,179,926				
0462 Payroll Deductions and Withholding	202,800				
0480 Unearned Revenues	17,037				
0490 Other Current Liabilities	6,977				
Total Liabilities	\$11,571,895				
0950 Deferred Inflows of Resources	159,120				
Fund Balances					
0810 Nonspendable Fund Balance					
0820 Restricted Fund Balance					
0830 Committed Fund Balance	5,786,344				
0840 Assigned Fund Balance					
0850 Unassigned Fund Balance	3,549,349				
Total Fund Balances	\$9,335,693				
Total Liabilities, Deferred Inflows Of Resources And Fund Balances	\$21,066,708				

Amounts Expressed in Whole Dollars		<u>Capital Reserve (1431)</u> <u>(32)</u>	<u>Other Capital Projects</u> <u>Fund</u> <u>(39)</u>	<u>Debt Service</u> <u>(40)</u>	<u>Permanent</u> <u>(90)</u>	<u>Total Governmental</u> <u>Funds</u>
Liabilities And Deferred Inflows Of Resources And Fund Balances						
Liabilities						
0400	Due to Other Funds					4,536,950
0411	Due to Other Governments					
0412	Due to Primary Government					
0413	Due to Component Unit					
0420	Accounts Payable					628,205
0430	Contracts Payable					
0440	Current Portion of Long-Term Debt					
0450	Short-Term Payables					
0461	Accrued Salaries and Benefits					6,179,926
0462	Payroll Deductions and Withholding					202,800
0480	Unearned Revenues					17,037
0490	Other Current Liabilities					6,977
Total Liabilities						\$11,571,895
0950	Deferred Inflows of Resources					159,120
Fund Balances						
0810	Nonspendable Fund Balance					
0820	Restricted Fund Balance	10,611,651				10,611,651
0830	Committed Fund Balance					5,786,344
0840	Assigned Fund Balance					
0850	Unassigned Fund Balance					3,549,349
Total Fund Balances		\$10,611,651				\$19,947,344
Total Liabilities, Deferred Inflows Of Resources And Fund Balances		\$10,611,651				\$31,678,359

Amounts Expressed in Whole Dollars	<u>General Fund</u> <u>(10)</u>	<u>Public Purpose Trust</u> <u>(27)</u>	<u>Other Compt Approved</u> <u>(28)</u>	<u>Athletic / Activity</u> <u>(29)</u>	<u>Capital Reserve (690.</u> <u>1850)</u> <u>(31)</u>
Revenues					
6000 Revenue from Local Sources	39,853,901				
7000 Revenue from State Sources	16,131,458				
8000 Revenue from Federal Sources	1,247,257				
Total Revenues	\$57,232,616				
Expenditures					
1000 Instruction	27,404,835				
2000 Support Services	18,121,545				
3000 Operation of Non-Instructional Services	1,045,638				
4000 Facilities Acquisition, Construction and Improvement Services	4,577				
5110 Debt Service	3,155,534				
5130 Refund of Prior Year Revenues / Receipts	105,499				
Total Expenditures	\$49,837,628				
Excess (Deficiency) Of Revenues Over Expenditures	\$7,394,988				
Other Financing Sources (Uses)					
9110 Face Value of Bonds Issued					
9120 Proceeds from Refunding of Bonds					
9130 Bond Premiums					
9200 Proceeds from Extended-Term Financing					
9300 Interfund Transfers - IN					
9400 Sale of or Compensation for Loss of Fixed Assets	2,350				
9710 Transfers from Component Units					
9720 Transfers from Primary Governments					
9910 Other Financing Sources Not Listed in the 9000 Series					
9990 Insurance Recoveries					
5120 Debt Service – Refunded Bonds					
5150 Bond Discounts					
5200 Interfund Transfers – Out	7,397,338				
5300 Transfers Out to Component Units/Primary Governments					
Total Other Financing Sources (Uses)	(\$7,394,988)				

LEA : 113362303 Eastern Lancaster County SD

Printed 12/7/2017 11:18:50 AM

Amounts Expressed in Whole Dollars	<u>Capital Reserve (1431)</u> <u>(32)</u>	<u>Other Capital Projects</u> <u>Fund</u> <u>(39)</u>	<u>Debt Service</u> <u>(40)</u>	<u>Permanent</u> <u>(90)</u>	<u>Total Governmental</u> <u>Funds</u>
Revenues					
6000 Revenue from Local Sources	25,801				39,879,702
7000 Revenue from State Sources					16,131,458
8000 Revenue from Federal Sources					1,247,257
Total Revenues	\$25,801				\$57,258,417
Expenditures					
1000 Instruction					27,404,835
2000 Support Services		52,148			18,173,693
3000 Operation of Non-Instructional Services					1,045,638
4000 Facilities Acquisition, Construction and Improvement Services	196,847				201,424
5110 Debt Service	2,871,898				6,027,432
5130 Refund of Prior Year Revenues / Receipts					105,499
Total Expenditures	\$3,068,745	\$52,148			\$52,958,521
Excess (Deficiency) Of Revenues Over Expenditures	(\$3,042,944)	(\$52,148)			\$4,299,896
Other Financing Sources (Uses)					
9110 Face Value of Bonds Issued					
9120 Proceeds from Refunding of Bonds		9,440,000			9,440,000
9130 Bond Premiums		525,834			525,834
9200 Proceeds from Extended-Term Financing					
9300 Interfund Transfers - IN	7,397,338				7,397,338
9400 Sale of or Compensation for Loss of Fixed Assets					2,350
9710 Transfers from Component Units					
9720 Transfers from Primary Governments					
9910 Other Financing Sources Not Listed in the 9000 Series					
9990 Insurance Recoveries					
5120 Debt Service – Refunded Bonds		9,831,086			9,831,086
5150 Bond Discounts		82,600			82,600
5200 Interfund Transfers – Out					7,397,338
5300 Transfers Out to Component Units/Primary Governments					
Total Other Financing Sources (Uses)	\$7,397,338	\$52,148			\$54,498

Amounts Expressed in Whole Dollars		<u>General Fund</u> <u>(10)</u>	<u>Public Purpose Trust</u> <u>(27)</u>	<u>Other Compt Approved</u> <u>(28)</u>	<u>Athletic / Activity</u> <u>(29)</u>	<u>Capital Reserve</u> <u>(690.</u> <u>1850)</u> <u>(31)</u>
Special And Extraordinary Items						
9920	Special Items – Gains					
9930	Extraordinary Items – Gains					
5520	Special Items – Losses					
5530	Extraordinary Items – Losses					
Net Change In Fund Balances						
Fund Balance						
0001	Fund Balance - Beginning of Fiscal Year	9,335,692				
Fund Balance - End Of Year		\$9,335,692				

Amounts Expressed in Whole Dollars		<u>Capital Reserve (1431)</u> <u>(32)</u>	<u>Other Capital Projects</u> <u>Fund</u> <u>(39)</u>	<u>Debt Service</u> <u>(40)</u>	<u>Permanent</u> <u>(90)</u>	<u>Total Governmental</u> <u>Funds</u>
Special And Extraordinary Items						
9920	Special Items – Gains					
9930	Extraordinary Items – Gains					
5520	Special Items – Losses					
5530	Extraordinary Items – Losses					
Net Change In Fund Balances		\$4,354,394				\$4,354,394
Fund Balance						
0001	Fund Balance - Beginning of Fiscal Year	6,257,257				15,592,949
Fund Balance - End Of Year		\$10,611,651				\$19,947,343

LEA : 113362303 Eastern Lancaster County SD

Printed 12/7/2017 11:18:51 AM

Amounts Expressed in Whole Dollars	Food Service (51)	Child Care Operations (52)	Other Enterprise (58)	TOTAL	Internal Service (60)
Assets And Deferred Outflows Of Resources					
Current Assets					
0100 Cash and Cash Equivalents	762,631			762,631	2,295,261
0110 Investments					6,000,041
0130 Due From Other Funds	11,713			11,713	
0141 Due From Other Governments					
0142 State Revenue Receivable	1,383			1,383	
0143 Federal Revenue Receivable	22,298			22,298	
0146 Due from Primary Government					
0147 Due from Component Unit					
0150 Other Receivables	2,196			2,196	16,622
0170 Inventories	19,934			19,934	
0180 Prepaid Expenses (Expenditures)					
0190 Other Current Assets					
Total Current Assets	\$820,155			\$820,155	\$8,311,924
Noncurrent Assets					
0211 Land					
0212 Site Improvements (Net)					
0220 Buildings and Building Improvements (Net)					
0230 Machinery, Equipment and Furniture (Net)	92,012			92,012	
0250 Construction in Progress					
0260 Long Term Prepayments					
0290 Other Noncurrent Assets					
Total Noncurrent Assets	\$92,012			\$92,012	
0910 Deferred Outflows of Resources	104,433			104,433	
Total Assets And Deferred Outflows Of Resources	\$1,016,600			\$1,016,600	\$8,311,924

Amounts Expressed in Whole Dollars	<u>Food Service</u> <u>(51)</u>	<u>Child Care</u> <u>Operations</u> <u>(52)</u>	<u>Other Enterprise</u> <u>(58)</u>	<u>TOTAL</u>	<u>Internal Service</u> <u>(60)</u>
Liabilities And Deferred Inflows Of Resources And Net Position					
Current Liabilities					
0400 Due to Other Funds					
0411 Due to Other Governments					
0413 Due to Component Unit					
0420 Accounts Payable	443			443	3,211
0430 Contracts Payable					
0440 Current Portion of Long-Term Debt					
0450 Short-Term Payables					
0461 Accrued Salaries and Benefits	930			930	136,487
0462 Payroll Deductions and Withholding					
0480 Unearned Revenues	32,592			32,592	
0490 Other Current Liabilities					
Total Current Liabilities	\$33,965			\$33,965	\$139,698
Noncurrent Liabilities					
0510 Bonds Payable					
0520 Extended-Term Financing Agreements Payable					
0530 Lease-Purchase Obligations					
0540 Accumulated Compensated Absences					
0550 Authority Lease Obligations					
0560 Other Post-Employment Benefits (OPEB)					
0570 Net Pension Liability	590,828			590,828	
0599 Other Noncurrent Liabilities					
Total Noncurrent Liabilities	\$590,828			\$590,828	
Total Liabilities	\$624,793			\$624,793	\$139,698
0950 Deferred Inflows of Resources	4,922			4,922	
Net Position					
0791 Net Investment in Capital Assets	92,012			92,012	
0008 Restricted Net Position (0792 – 0798)					
0799 Unrestricted Net Position	294,873			294,873	8,172,226
Total Net Position	\$386,885			\$386,885	\$8,172,226
Total Liabilities And Deferred Inflows Of Resources And Net Position	\$1,016,600			\$1,016,600	\$8,311,924

Amounts Expressed in Whole Dollars	Food Service (51)	Child Care Operations (52)	Other Enterprise (58)	TOTAL	Internal Service (60)
Operating Revenues					
6600 Food Service Revenue	632,732			632,732	
0071 Charges for Services					3,631,101
0072 Other Operating Revenue					
Total Operating Revenues	\$632,732			\$632,732	\$3,631,101
Operating Expenses					
100 Personnel Services – Salaries	164,618			164,618	
200 Personnel Services – Employee Benefits	5,706			5,706	3,431,498
300 Purchased Professional and Technical Services	3,567			3,567	52,309
400 Purchased Property Services	17,253			17,253	
500 Other Purchased Services	369,837			369,837	
600 Supplies	661,711			661,711	
740 Depreciation	17,657			17,657	
810 Dues and Fees	8,538			8,538	473
890 Miscellaneous Expenditures					
Total Operating Expenses	\$1,248,887			\$1,248,887	\$3,484,280
Operating Income (Loss)	(\$616,155)			(\$616,155)	\$146,821
Non Operating Revenues (Expenses)					
6500 Earnings on Investments	2,657			2,657	34,531
6920 Contributions and Donations from Private Sources					
6930 Gains or Losses on Sale of Fixed Assets	(1,677)			(1,677)	
6991 Refunds of a Prior Year Expenditure					
7000 Revenue from State Sources	73,596			73,596	
8000 Revenue from Federal Sources	799,527			799,527	
820 Claims and Judgments Against the LEA					
830 Interest					
TOTAL Non Operating Revenues (Expenses)	\$874,103			\$874,103	\$34,531
Income (Loss) Before Contributions And Transfers	\$257,948			\$257,948	\$181,352

Amounts Expressed in Whole Dollars	<u>Food Service</u> (51)	<u>Child Care Operations</u> (52)	<u>Other Enterprise</u> (58)	<u>TOTAL</u>	<u>Internal Service</u> (60)
Contributions, Transfers, and Special and Extraordinary Items					
5200 Interfund Transfers – Out					
5300 Transfers Out to Component Units/Primary Governments					
5520 Special Items – Losses					
5530 Extraordinary Items – Losses					
9300 Interfund Transfers - IN					
9500 Capital Contributions					
9700 Transfers IN From Component Units/Primary Governments					
9920 Special Items – Gains					
9930 Extraordinary Items – Gains					
Change In Net Position	\$257,948			\$257,948	\$181,352
0002 Net Position - Beginning of Fiscal Year	726,381			726,381	7,990,874
0003 Accounting Changes / Residual Equity Transfers	(597,444)			(597,444)	
Net Position - End Of Year	\$386,885			\$386,885	\$8,172,226

Amounts Expressed in Whole Dollars	Food Service (51)	Child Care Operations (52)	Other Enterprise (58)	TOTAL	Internal Service(60)
Cash Flows From Operating Activities					
0011 Cash Receipts From Users	617,718			617,718	
0012 Cash Receipts From Assessments Made to Other Funds					3,643,938
0013 Cash Receipts From Earnings on Investments					
0014 Cash Receipts From Other Operating Revenue					
0015 Cash Payments To Employees For Services	288,232			288,232	
0016 Cash Payments For Insurance Claims					3,688,400
0017 Cash Payments To Suppliers For Goods and Services	888,453			888,453	
0018 Cash Payments For Other Operating Expenses					55,354
Net Cash Provided By (Used For) Operating Activities	(\$558,967)			(\$558,967)	(\$99,816)
Cash Flows From Non-Capital Financing Activities					
0021 Receipts From Local Sources - 6000					
0022 Receipts From State Sources - 7000	72,213			72,213	
0023 Receipts From Federal Sources -8000	656,372			656,372	
0024 Notes and Loans Received (Repaid)					
0025 Interest Paid on Notes/Loans - 5100-830					
0026 Operating Transfers In (Out)/Residual Equity Trans					
0027 Operating Transfers In (Out) Primary Government / Comp Unit					
0028 Receipts From Refund of Prior Year Expenditures - 6991					
0029 Special and Extraordinary Gains (losses)					
Net Cash Prov By (Used for) Non-Capital Financing Activities	\$728,585			\$728,585	
Cash Flows From Capital and Related Financing Activities					
0031 Payments For Fac Acq, Const, and Imp - 4000	(7,483)			(7,483)	
0032 Gain / (Loss) on Sale of Fixed Assets - 6930					
0033 Proceeds From Extended Term Financing - 9200					
0034 Principal Paid on Financing Agreements					
0035 Interest Paid on Financing Agreements - 5100-830					
0036 (Inc) Dec in Contributed Capital					
Net Cash Prov By (Used for) Capital and Related Financing Activities	(\$7,483)			(\$7,483)	
Cash Flows From Investing Activities					
0041 Earnings on Investments - 6500	2,657			2,657	34,531
0042 Purchase of Inv Securities / Deposits to Inv Pools					
0043 Receipts From Investment Pool Withdrawals					
0044 Proceeds from Sale and Maturity of Inv Securities					245,284
0045 Loans Received (Paid)					
Net Cash Prov By (Used for) Investing Activities	\$2,657			\$2,657	\$279,815

LEA : 113362303 Eastern Lancaster County SD

Printed 12/7/2017 11:18:54 AM

	<u>Food Service</u> <u>(51)</u>	<u>Child Care Operations</u> <u>(52)</u>	<u>Other Enterprise</u> <u>(58)</u>	<u>TOTAL</u>	<u>Internal Service</u> <u>(60)</u>
Net Increase (Decrease) in Cash Flows	164,792			164,792	179,999
0004 Cash and Cash Equivalents Beginning of Year	597,839			597,839	2,115,262
Cash and Cash Equivalents at Year End	\$762,631			\$762,631	\$2,295,261
Reconciliation of Operating Income (Loss) To Net Cash Provided by (Used For) Operating Activities					
0005 Operating Income (Loss) per REP	(616,155)			(616,155)	146,821
Adjustments					
0051 Depreciation and Net Amortization	17,657			17,657	
0052 Provision for Uncollectible Accounts					
0053 Other Adjustments	120,857			120,857	
Effect of Changes in Assets, Liabilities, Deferred Outflows and Deferred Inflows					
0054 (Inc) Dec In Accounts Receivable (0120-0150)	40,881			40,881	12,837
0055 Advances to Other Funds (0160)					
0056 (Inc) Dec in Inventories (0170)	14,253			14,253	
0057 (Inc) Dec in Prepaid Expenses (0180)					
0058 (Inc) Dec in Other Current or Noncurrent Assets					
0064 Deferred Outflows (0910)	(55,047)			(55,047)	
0059 Inc (Dec) in Accounts Payable (0400-0450)	(4,727)			(4,727)	(2,572)
0060 Inc (Dec) in Accrued Salaries/Benefits (0461)	(11,781)			(11,781)	(256,902)
0065 Inc (Dec) in Net Pension Liabilities (0570)	(39,843)			(39,843)	
0066 Inc (Dec) in Other Postemp Benefit Oblig (0560)					
0061 Inc (Dec) in Payroll Deductions/Withholding (0462)					
0062 Inc (Dec) in Unearned Revenue (0480)	(13,825)			(13,825)	
0063 Inc (Dec) in Other Current or Noncurrent Liabilities					
0067 Deferred Inflows (0950)	(11,237)			(11,237)	
Total Adjustments	\$57,188			\$57,188	(\$246,637)
Cash Provided By (Used for) Total	(\$558,967)			(\$558,967)	(\$99,816)

COMBINED STATEMENT OF CASH FLOWS
SCHEDULE OF NONCASH INVESTING, CAPITAL, AND FINANCING ACTIVITIES

Explanation of Transaction and Balance Sheet Effect	Amount
USDA Donated Commodities Received	120,857
Total	\$120,857

LEA : 113362303 Eastern Lancaster County SD

Printed 12/7/2017 11:18:55 AM

Amounts Expressed in Whole Dollars	<u>Private Purpose Trust</u> <u>(71)</u>	<u>Investment Trust</u> <u>(72)</u>	<u>Pension Trust</u> <u>(73)</u>	<u>Activity</u> <u>(81)</u>
Assets And Deferred Outflows Of Resources				
Assets				
0100 Cash and Cash Equivalents	70,330			92,377
0110 Investments				
0130 Due From Other Funds				
0147 Due from Component Unit				
0150 Other Receivables				122
0170 Inventories				
0180 Prepaid Expenses (Expenditures)				
0190 Other Current Assets				
0220 Buildings and Building Improvements (Net)				
0230 Machinery, Equipment and Furniture (Net)				
Total Assets	\$70,330			\$92,499
0910 Deferred Outflows of Resources				
Total Assets And Deferred Outflows Of Resources	\$70,330			\$92,499

LEA : 113362303 Eastern Lancaster County SD

Printed 12/7/2017 11:18:55 AM

Amounts Expressed in Whole Dollars		<u>Other Agency</u> <u>(89)</u>	<u>Discrete Component Units</u> <u>(98)</u>	<u>Discrete Component Units</u> <u>(99)</u>	<u>Total Fiduciary Funds</u>
Assets And Deferred Outflows Of Resources					
Assets					
0100	Cash and Cash Equivalents				162,707
0110	Investments				
0130	Due From Other Funds				
0147	Due from Component Unit				
0150	Other Receivables				122
0170	Inventories				
0180	Prepaid Expenses (Expenditures)				
0190	Other Current Assets				
0220	Buildings and Building Improvements (Net)				
0230	Machinery, Equipment and Furniture (Net)				
Total Assets					\$162,829
0910	Deferred Outflows of Resources				
Total Assets And Deferred Outflows Of Resources					\$162,829

LEA : 113362303 Eastern Lancaster County SD

Printed 12/7/2017 11:18:55 AM

Amounts Expressed in Whole Dollars	<u>Private Purpose Trust</u> <u>(71)</u>	<u>Investment Trust</u> <u>(72)</u>	<u>Pension Trust</u> <u>(73)</u>	<u>Activity</u> <u>(81)</u>
Liabilities, Deferred Inflows Of Resources And Net Position				
Liabilities				
0400 Due to Other Funds				
0411 Due to Other Governments				
0412 Due to Primary Government				
0413 Due to Component Unit				
0420 Accounts Payable				1,676
0430 Contracts Payable				
0450 Short-Term Payables				
0461 Accrued Salaries and Benefits				
0462 Payroll Deductions and Withholding				
0480 Unearned Revenues				
0490 Other Current Liabilities				90,823
Total Liabilities				\$92,499
0950 Deferred Inflows of Resources				
Net Position				
0791 Net Investment in Capital Assets				
0009 Restricted Net Position (0792 – 0798)	70,330			
0799 Unrestricted Net Position				
Total Net Position	\$70,330			
Total Liabilities, Deferred Inflows Of Resources And Net Position	\$70,330			\$92,499

LEA : 113362303 Eastern Lancaster County SD

Printed 12/7/2017 11:18:55 AM

Amounts Expressed in Whole Dollars

<u>Other Agency</u>	<u>Discrete Component Units</u>	<u>Discrete Component Units</u>	<u>Total Fiduciary Funds</u>
(89)	(98)	(99)	

Liabilities, Deferred Inflows Of Resources And Net Position

Liabilities

0400	Due to Other Funds			
0411	Due to Other Governments			
0412	Due to Primary Government			
0413	Due to Component Unit			
0420	Accounts Payable			1,676
0430	Contracts Payable			
0450	Short-Term Payables			
0461	Accrued Salaries and Benefits			
0462	Payroll Deductions and Withholding			
0480	Unearned Revenues			
0490	Other Current Liabilities			90,823
Total Liabilities				\$92,499

0950 Deferred Inflows of Resources

Net Position

0791	Net Investment in Capital Assets			
0009	Restricted Net Position (0792 – 0798)			70,330
0799	Unrestricted Net Position			

Total Net Position				\$70,330
--------------------	--	--	--	----------

Total Liabilities, Deferred Inflows Of Resources And Net Position				\$162,829
---	--	--	--	-----------

LEA : 113362303 Eastern Lancaster County SD

Printed 12/7/2017 11:18:56 AM

Amounts Expressed in Whole Dollars	<u>Private Purpose Trust</u> <u>(71)</u>	<u>Investment Trust</u> <u>(72)</u>	<u>Pension Trust</u> <u>(73)</u>	<u>Discrete Component</u> <u>Units</u> <u>(98)</u>	<u>Discrete Component</u> <u>Units</u> <u>(99)</u>	<u>Total Fiduciary</u> <u>Funds</u>
Additions						
0091 Gifts and Contributions	2,615					2,615
0092 Other Additions	300					300
Deductions						
0093 Scholarships Awarded	3,000					3,000
0094 Other Deductions						
Change In Net Position	(\$85)					(\$85)
0006 Net Position – Beginning of Fiscal Year	70,415					70,415
0007 Net Position Held in Trust for Pension Benefits						
Net Position - End of Fiscal Year	\$70,330					\$70,330

	Revenue Reported In Current Year	Current Year Tax Accrual	Prior Year Tax Accrual	Taxes Collected In Current Year
Revenue from Local Sources				
6111 Current Real Estate Taxes	30,495,267.78			30,495,267.78
6112 Interim Real Estate Taxes	100,348.65	2,732.65	11,407.16	109,023.16
6113 Public Utility Realty Taxes	37,992.29			37,992.29
6114 Payments in Lieu of Current Taxes - State / Local	181,670.25			181,670.25
6143 Current Act 511 Local Services Taxes	161,538.87	36,483.76	33,822.62	158,877.73
6151 Current Act 511 Earned Income Taxes	3,668,975.55	650,426.24	595,051.55	3,613,600.86
6153 Current Act 511 Real Estate Transfer Taxes	535,214.80	60,457.86	51,191.77	525,948.71
6411 Delinquent Real Estate Taxes	455,792.76	200,140.74	151,531.93	407,183.95
6420 Delinquent Per Capita Taxes, Section 679	2,751.69	308.00	2,282.18	4,725.87
6500 Earnings on Investments	136,551.37			
6700 Revenues from LEA Activities	101,457.18			
6832 Federal IDEA Revenue Received as Pass Through	481,343.00			
6839 Federal Revenue Received from Other Sources	186.31			
6910 Rentals	28,949.84			
6920 Contributions and Donations from Private Sources	2,998.00			
6941 Regular Day School Tuition	708.00			
6942 Summer School Tuition	5,050.00			
6944 Receipts from Other LEAs in Pennsylvania - Education	2,811,526.06			
6961 Transportation Services Provided Other Pennsylvania LEAs	19,678.41			
6962 Other Services Provided Other Pennsylvania LEAs	401,249.20			
6991 Refunds of a Prior Year Expenditure	83,382.69			
6999 Other Revenues Not Specified Above	141,268.68			
TOTAL Revenue from Local Sources	\$39,853,901.38	\$950,549.25	\$845,287.21	\$35,534,290.60

	Revenue Reported In Current Year			
Revenue from State Sources				
7110 Basic Education Funding	4,358,997.04			
7160 Tuition for Orphans Subsidy	137,024.98			
7220 Vocational Education	58,486.54			
7271 Special Education funds for School-Aged Pupils	1,660,117.45			
7311 Pupil Transportation Subsidy	1,228,389.74			
7312 Nonpublic and Charter School Pupil Transportation Subsidy	145,145.00			
7320 Rental and Sinking Fund Payments / Building Reimbursement Subsidy	4,055,773.68			
7330 Health Services (Medical, Dental, Nurse, Act 25)	79,196.16			
7340 State Property Tax Reduction Allocation	445,327.82			
7505 Ready to Learn Block Grant	247,418.00			
7810 State Share of Social Security and Medicare Taxes	726,907.66			
7820 State Share of Retirement Contributions	2,988,674.09			
TOTAL Revenue from State Sources	\$16,131,458.16			

Revenue Reported In Current Year				
Revenue from Federal Sources				
8110	Payments for Federally Impacted Areas	36,395.25		
8514	NCLB, Title I - Improving the Academic Achievement of the Disadvantaged	780,884.22		
8515	NCLB, Title II - Preparing, Training and Recruiting High Quality Teachers and Principals	203,949.28		
8516	NCLB, Title III - Language Instruction for Limited English Proficient and Immigrant Students	838.97		
8810	School-Based Access Medicaid Reimbursement Program (SBAP) Reimbursements (Access)	207,338.01		
8820	Medical Assistance Reimbursement for Administrative Claiming (Quarterly) Program	17,850.92		
TOTAL Revenue from Federal Sources		\$1,247,256.65		

	Revenue Reported In Current Year			
<u>Other Financing Sources</u>				
9400 Sale of or Compensation for Loss of Fixed Assets	2,350.00			
TOTAL Other Financing Sources	\$2,350.00			
TOTAL FROM ALL SOURCES	\$57,234,966.19	\$950,549.25	\$845,287.21	\$35,534,290.60

Revenue from Local Sources	39,853,901.38
Revenue from State Sources	16,131,458.16
Revenue from Federal Sources	1,247,256.65
Other Financing Sources	2,350.00
TOTAL FROM ALL SOURCES	\$57,234,966.19

LEA : 113362303 Eastern Lancaster County SD

Printed 12/7/2017 11:18:58 AM

General Fund (10)

1000 Instruction	Total
100 <u>Personnel Services – Salaries</u>	
100 Personnel Services – Salaries	13,454,516.90
Total Personnel Services – Salaries	\$13,454,516.90
200 <u>Personnel Services – Employee Benefits</u>	
210 Group Insurance – Contracted Provider	43,466.59
220 Social Security Contributions	998,382.85
230 PSERS Retirement Contributions	3,935,704.51
260 Workers’ Compensation	57,384.95
270 Group Insurance – Self-Insurance	2,188,682.84
291 Other Retirement Plans	26,630.00
Total Personnel Services – Employee Benefits	\$7,250,251.74
300 <u>Purchased Professional and Technical Services</u>	
322 Professional Educational Services – Ius	789,395.24
329 Professional Educational Services – Other	2,439,438.92
330 Other Professional Services	326,712.77
Total Purchased Professional and Technical Services	\$3,555,546.93
400 <u>Purchased Property Services</u>	
430 Repairs and Maintenance Services	12,400.68
Total Purchased Property Services	\$12,400.68
500 <u>Other Purchased Services</u>	
510 Student Transportation Services	72,831.47
530 Communications	17,780.02
550 Printing and Binding	1,235.23
561 Tuition To Other School Districts Within the State	74,793.81
562 Tuition To Pennsylvania Charter Schools	704,642.48
564 Tuition To Career and Technology Centers	1,114,686.72
567 Tuition To Approved Private Schools (APS) and PA Chartered Schools for the Deaf and Blind	77,097.74
568 Tuition To Private Residential Rehabilitative Institutions (PRRI) [In-State] and Detention Centers	6,624.79
569 Tuition – Other	2,520.00
580 Travel	1,682.29
Total Other Purchased Services	\$2,073,894.55
600 <u>Supplies</u>	
610 General Supplies	376,206.91
620 Energy	35.04
630 Food	5,835.81
640 Books and Periodicals	65,821.92
650 Supplies & Fees – Technology Related	574,993.53
Total Supplies	\$1,022,893.21
700 <u>Property</u>	
762 Capitalized Equipment - Replacement	24,609.00
Total Property	\$24,609.00

LEA : 113362303 Eastern Lancaster County SD

Printed 12/7/2017 11:18:58 AM

General Fund (10)		
1000 Instruction		<u>Total</u>
800 <u>Other Objects</u>		
810 Dues and Fees		6,012.41
890 Miscellaneous Expenditures		4,710.00
Total Other Objects		\$10,722.41
Total 1000 Instruction		\$27,404,835.42

LEA : 113362303 Eastern Lancaster County SD

Printed 12/7/2017 11:18:58 AM

General Fund (10)

1100 Regular Programs – Elementary / Secondary	Elementary	Secondary	Federal	Total
100 <u>Personnel Services – Salaries</u>				
100 Personnel Services – Salaries	5,365,902.90	5,163,901.09	695,221.20	11,225,025.19
Total Personnel Services – Salaries	\$5,365,902.90	\$5,163,901.09	\$695,221.20	\$11,225,025.19
200 <u>Personnel Services – Employee Benefits</u>				
210 Group Insurance – Contracted Provider	18,937.82	17,096.29	650.10	36,684.21
220 Social Security Contributions	398,735.88	383,217.80	51,451.33	833,405.01
230 PSERS Retirement Contributions	1,553,778.37	1,504,758.08	208,774.98	3,267,311.43
260 Workers' Compensation	22,660.78	20,882.11	4,449.44	47,992.33
270 Group Insurance – Self-Insurance	899,361.05	822,654.05	93,436.66	1,815,451.76
291 Other Retirement Plans	6,000.00	20,630.00		26,630.00
Total Personnel Services – Employee Benefits	\$2,899,473.90	\$2,769,238.33	\$358,762.51	\$6,027,474.74
300 <u>Purchased Professional and Technical Services</u>				
322 Professional Educational Services – Ius	440.49	348.58		789.07
329 Professional Educational Services – Other	267,812.42	255,261.21	838.97	523,912.60
330 Other Professional Services	912.92	1,202.67		2,115.59
Total Purchased Professional and Technical Services	\$269,165.83	\$256,812.46	\$838.97	\$526,817.26
400 <u>Purchased Property Services</u>				
430 Repairs and Maintenance Services	2,208.98	10,191.70		12,400.68
Total Purchased Property Services	\$2,208.98	\$10,191.70		\$12,400.68
500 <u>Other Purchased Services</u>				
510 Student Transportation Services	25,438.50	9,724.30		35,162.80
530 Communications	4,634.59	11,460.90		16,095.49
550 Printing and Binding		172.23		172.23
562 Tuition To Pennsylvania Charter Schools	144,092.70	344,024.27		488,116.97
568 Tuition To Private Residential Rehabilitative Institutions (PRRI) [In-State] and Detention Centers		5,244.79		5,244.79
580 Travel	849.76	98.06		947.82
Total Other Purchased Services	\$175,015.55	\$370,724.55		\$545,740.10
600 <u>Supplies</u>				
610 General Supplies	137,569.28	216,099.32		353,668.60
630 Food	862.34	1,228.15		2,090.49
640 Books and Periodicals	43,002.80	18,497.03		61,499.83
650 Supplies & Fees – Technology Related	137,413.63	371,225.91		508,639.54
Total Supplies	\$318,848.05	\$607,050.41		\$925,898.46
700 <u>Property</u>				
762 Capitalized Equipment - Replacement		24,609.00		24,609.00
Total Property		\$24,609.00		\$24,609.00
800 <u>Other Objects</u>				
810 Dues and Fees	388.00	575.00		963.00
890 Miscellaneous Expenditures	835.00	3,875.00		4,710.00
Total Other Objects	\$1,223.00	\$4,450.00		\$5,673.00
Total 1100 Regular Programs – Elementary / Secondary	\$9,031,838.21	\$9,206,977.54	\$1,054,822.68	\$19,293,638.43

LEA : 113362303 Eastern Lancaster County SD

Printed 12/7/2017 11:18:58 AM

General Fund (10)

1110 Regular Programs	Elementary	Secondary	Federal	Total
100 <u>Personnel Services – Salaries</u>				
100 Personnel Services – Salaries	5,365,902.90	5,163,901.09		10,529,803.99
Total Personnel Services – Salaries	\$5,365,902.90	\$5,163,901.09		\$10,529,803.99
200 <u>Personnel Services – Employee Benefits</u>				
210 Group Insurance – Contracted Provider	18,937.82	17,096.29		36,034.11
220 Social Security Contributions	398,735.88	383,217.80		781,953.68
230 PSERS Retirement Contributions	1,553,778.37	1,504,758.08		3,058,536.45
260 Workers' Compensation	22,660.78	20,882.11		43,542.89
270 Group Insurance – Self-Insurance	899,361.05	822,654.05		1,722,015.10
291 Other Retirement Plans	6,000.00	20,630.00		26,630.00
Total Personnel Services – Employee Benefits	\$2,899,473.90	\$2,769,238.33		\$5,668,712.23
300 <u>Purchased Professional and Technical Services</u>				
322 Professional Educational Services – Ius	440.49	348.58		789.07
329 Professional Educational Services – Other	267,812.42	255,261.21		523,073.63
330 Other Professional Services	912.92	1,202.67		2,115.59
Total Purchased Professional and Technical Services	\$269,165.83	\$256,812.46		\$525,978.29
400 <u>Purchased Property Services</u>				
430 Repairs and Maintenance Services	2,208.98	10,191.70		12,400.68
Total Purchased Property Services	\$2,208.98	\$10,191.70		\$12,400.68
500 <u>Other Purchased Services</u>				
510 Student Transportation Services	25,438.50	9,724.30		35,162.80
530 Communications	4,634.59	11,460.90		16,095.49
550 Printing and Binding		172.23		172.23
562 Tuition To Pennsylvania Charter Schools	144,092.70	344,024.27		488,116.97
568 Tuition To Private Residential Rehabilitative Institutions (PRRI) [In-State] and Detention Centers		5,244.79		5,244.79
580 Travel	849.76	98.06		947.82
Total Other Purchased Services	\$175,015.55	\$370,724.55		\$545,740.10
600 <u>Supplies</u>				
610 General Supplies	137,569.28	216,099.32		353,668.60
630 Food	862.34	1,228.15		2,090.49
640 Books and Periodicals	43,002.80	18,497.03		61,499.83
650 Supplies & Fees – Technology Related	137,413.63	371,225.91		508,639.54
Total Supplies	\$318,848.05	\$607,050.41		\$925,898.46
700 <u>Property</u>				
762 Capitalized Equipment - Replacement		24,609.00		24,609.00
Total Property		\$24,609.00		\$24,609.00
800 <u>Other Objects</u>				
810 Dues and Fees	388.00	575.00		963.00
890 Miscellaneous Expenditures	835.00	3,875.00		4,710.00
Total Other Objects	\$1,223.00	\$4,450.00		\$5,673.00
Total 1110 Regular Programs	\$9,031,838.21	\$9,206,977.54		\$18,238,815.75

LEA : 113362303 Eastern Lancaster County SD

Printed 12/7/2017 11:18:58 AM

General Fund (10)

1190 Federally-Funded Regular Programs	<u>Elementary</u>	<u>Secondary</u>	<u>Federal</u>	<u>Total</u>
100 <u>Personnel Services – Salaries</u>				
100 Personnel Services – Salaries			695,221.20	695,221.20
Total Personnel Services – Salaries			\$695,221.20	\$695,221.20
200 <u>Personnel Services – Employee Benefits</u>				
210 Group Insurance – Contracted Provider			650.10	650.10
220 Social Security Contributions			51,451.33	51,451.33
230 PSERS Retirement Contributions			208,774.98	208,774.98
260 Workers' Compensation			4,449.44	4,449.44
270 Group Insurance – Self-Insurance			93,436.66	93,436.66
Total Personnel Services – Employee Benefits			\$358,762.51	\$358,762.51
300 <u>Purchased Professional and Technical Services</u>				
329 Professional Educational Services – Other			838.97	838.97
Total Purchased Professional and Technical Services			\$838.97	\$838.97
Total 1190 Federally-Funded Regular Programs			\$1,054,822.68	\$1,054,822.68

LEA : 113362303 Eastern Lancaster County SD

Printed 12/7/2017 11:18:58 AM

General Fund (10)				
1200 Special Programs – Elementary / Secondary	<u>Elementary</u>	<u>Secondary</u>	<u>Federal</u>	<u>Total</u>
100 <u>Personnel Services – Salaries</u>				
100 Personnel Services – Salaries	1,010,307.90	1,011,946.66		2,022,254.56
Total Personnel Services – Salaries	\$1,010,307.90	\$1,011,946.66		\$2,022,254.56
200 <u>Personnel Services – Employee Benefits</u>				
210 Group Insurance – Contracted Provider	3,197.63	3,181.75		6,379.38
220 Social Security Contributions	75,523.58	73,832.25		149,355.83
230 PSERS Retirement Contributions	303,070.98	303,339.09		606,410.07
260 Workers' Compensation	4,163.66	4,208.74		8,372.40
270 Group Insurance – Self-Insurance	176,215.85	180,710.57		356,926.42
Total Personnel Services – Employee Benefits	\$562,171.70	\$565,272.40		\$1,127,444.10
300 <u>Purchased Professional and Technical Services</u>				
322 Professional Educational Services – lus	243,723.88	167,351.59	353,093.00	764,168.47
329 Professional Educational Services – Other	1,023,282.94	857,918.46		1,881,201.40
330 Other Professional Services	153,098.44	171,498.74		324,597.18
Total Purchased Professional and Technical Services	\$1,420,105.26	\$1,196,768.79	\$353,093.00	\$2,969,967.05
500 <u>Other Purchased Services</u>				
510 Student Transportation Services	14,053.80	15,557.77		29,611.57
530 Communications	271.40	1,138.62		1,410.02
550 Printing and Binding	642.00	421.00		1,063.00
561 Tuition To Other School Districts Within the State		42,589.23		42,589.23
562 Tuition To Pennsylvania Charter Schools	67,576.85	148,948.66		216,525.51
567 Tuition To Approved Private Schools (APS) and PA Chartered Schools for the Deaf and Blind	77,073.00	24.74		77,097.74
568 Tuition To Private Residential Rehabilitative Institutions (PRRI) [In-State] and Detention Centers	360.00	1,020.00		1,380.00
569 Tuition – Other	2,520.00			2,520.00
580 Travel	340.61	40.95		381.56
Total Other Purchased Services	\$162,837.66	\$209,740.97		\$372,578.63
600 <u>Supplies</u>				
610 General Supplies	9,418.18	5,672.61		15,090.79
630 Food	1,771.63	1,870.58		3,642.21
640 Books and Periodicals	3,146.45	528.12		3,674.57
650 Supplies & Fees – Technology Related	479.00	62,157.80		62,636.80
Total Supplies	\$14,815.26	\$70,229.11		\$85,044.37
800 <u>Other Objects</u>				
810 Dues and Fees	1,434.00	1,345.00		2,779.00
Total Other Objects	\$1,434.00	\$1,345.00		\$2,779.00
Total 1200 Special Programs – Elementary / Secondary	\$3,171,671.78	\$3,055,302.93	\$353,093.00	\$6,580,067.71

LEA : 113362303 Eastern Lancaster County SD

Printed 12/7/2017 11:18:58 AM

General Fund (10)

1210 Life Skills Support

	Elementary	Secondary	Federal	Total
100 <u>Personnel Services – Salaries</u>				
100 Personnel Services – Salaries	128,875.28	138,988.29		267,863.57
Total Personnel Services – Salaries	\$128,875.28	\$138,988.29		\$267,863.57
200 <u>Personnel Services – Employee Benefits</u>				
210 Group Insurance – Contracted Provider	431.50	498.50		930.00
220 Social Security Contributions	9,578.94	10,161.09		19,740.03
230 PSERS Retirement Contributions	38,701.33	41,739.75		80,441.08
260 Workers' Compensation	502.89	574.52		1,077.41
270 Group Insurance – Self-Insurance	24,394.72	33,256.72		57,651.44
Total Personnel Services – Employee Benefits	\$73,609.38	\$86,230.58		\$159,839.96
300 <u>Purchased Professional and Technical Services</u>				
322 Professional Educational Services – lus		46,380.24		46,380.24
329 Professional Educational Services – Other	100,619.48	123,133.21		223,752.69
330 Other Professional Services		8,828.07		8,828.07
Total Purchased Professional and Technical Services	\$100,619.48	\$178,341.52		\$278,961.00
500 <u>Other Purchased Services</u>				
510 Student Transportation Services	116.85			116.85
530 Communications	4.55	104.44		108.99
550 Printing and Binding	642.00			642.00
Total Other Purchased Services	\$763.40	\$104.44		\$867.84
600 <u>Supplies</u>				
610 General Supplies	171.13	1,165.41		1,336.54
630 Food		705.61		705.61
640 Books and Periodicals	933.90	446.10		1,380.00
650 Supplies & Fees – Technology Related		169.00		169.00
Total Supplies	\$1,105.03	\$2,486.12		\$3,591.15
Total 1210 Life Skills Support	\$304,972.57	\$406,150.95		\$711,123.52

LEA : 113362303 Eastern Lancaster County SD

Printed 12/7/2017 11:18:58 AM

General Fund (10)				
1220 Sensory Support	Elementary	Secondary	Federal	Total
100 <u>Personnel Services – Salaries</u>				
100 Personnel Services – Salaries	47,068.00			47,068.00
Total Personnel Services – Salaries	\$47,068.00			\$47,068.00
200 <u>Personnel Services – Employee Benefits</u>				
210 Group Insurance – Contracted Provider	68.75			68.75
220 Social Security Contributions	3,534.16			3,534.16
230 PSERS Retirement Contributions	14,134.61			14,134.61
260 Workers' Compensation	301.32			301.32
270 Group Insurance – Self-Insurance	5,946.30			5,946.30
Total Personnel Services – Employee Benefits	\$23,985.14			\$23,985.14
300 <u>Purchased Professional and Technical Services</u>				
322 Professional Educational Services – lus	2,717.40	5,357.98	31,186.00	39,261.38
330 Other Professional Services	151,272.32	144,952.41		296,224.73
Total Purchased Professional and Technical Services	\$153,989.72	\$150,310.39	\$31,186.00	\$335,486.11
500 <u>Other Purchased Services</u>				
530 Communications	16.52	23.40		39.92
580 Travel	281.12			281.12
Total Other Purchased Services	\$297.64	\$23.40		\$321.04
600 <u>Supplies</u>				
610 General Supplies	734.05	446.62		1,180.67
Total Supplies	\$734.05	\$446.62		\$1,180.67
800 <u>Other Objects</u>				
810 Dues and Fees	89.00			89.00
Total Other Objects	\$89.00			\$89.00
Total 1220 Sensory Support	\$226,163.55	\$150,780.41	\$31,186.00	\$408,129.96

LEA : 113362303 Eastern Lancaster County SD

Printed 12/7/2017 11:18:58 AM

General Fund (10)

1230 Emotional Support

	Elementary	Secondary	Federal	Total
100 <u>Personnel Services – Salaries</u>				
100 Personnel Services – Salaries	296,473.39	298,295.72		594,769.11
Total Personnel Services – Salaries	\$296,473.39	\$298,295.72		\$594,769.11
200 <u>Personnel Services – Employee Benefits</u>				
210 Group Insurance – Contracted Provider	1,019.50	992.25		2,011.75
220 Social Security Contributions	22,183.85	21,912.51		44,096.36
230 PSERS Retirement Contributions	89,006.41	89,278.11		178,284.52
260 Workers' Compensation	1,042.88	1,202.99		2,245.87
270 Group Insurance – Self-Insurance	49,159.75	52,723.21		101,882.96
Total Personnel Services – Employee Benefits	\$162,412.39	\$166,109.07		\$328,521.46
300 <u>Purchased Professional and Technical Services</u>				
322 Professional Educational Services – lus	116,360.75	96,960.48	66,970.00	280,291.23
329 Professional Educational Services – Other	579,024.70	489,088.95		1,068,113.65
330 Other Professional Services	1,544.77	917.64		2,462.41
Total Purchased Professional and Technical Services	\$696,930.22	\$586,967.07	\$66,970.00	\$1,350,867.29
500 <u>Other Purchased Services</u>				
510 Student Transportation Services	7,467.60	13,463.02		20,930.62
530 Communications	26.29	132.60		158.89
561 Tuition To Other School Districts Within the State		21,856.35		21,856.35
562 Tuition To Pennsylvania Charter Schools	22,496.40	6,119.02		28,615.42
567 Tuition To Approved Private Schools (APS) and PA Chartered Schools for the Deaf and Blind	77,073.00			77,073.00
568 Tuition To Private Residential Rehabilitative Institutions (PRRI) [In-State] and Detention Centers	360.00	480.00		840.00
569 Tuition – Other	2,520.00			2,520.00
Total Other Purchased Services	\$109,943.29	\$42,050.99		\$151,994.28
600 <u>Supplies</u>				
610 General Supplies	4,070.32	2,307.01		6,377.33
630 Food	1,771.63	1,147.80		2,919.43
640 Books and Periodicals	1,807.40	45.55		1,852.95
Total Supplies	\$7,649.35	\$3,500.36		\$11,149.71
Total 1230 Emotional Support	\$1,273,408.64	\$1,096,923.21	\$66,970.00	\$2,437,301.85

LEA : 113362303 Eastern Lancaster County SD

Printed 12/7/2017 11:18:58 AM

General Fund (10)				
1240 Academic Support	<u>Elementary</u>	<u>Secondary</u>	<u>Federal</u>	<u>Total</u>
100 <u>Personnel Services – Salaries</u>				
100 Personnel Services – Salaries	439,438.61	512,161.29		951,599.90
Total Personnel Services – Salaries	\$439,438.61	\$512,161.29		\$951,599.90
200 <u>Personnel Services – Employee Benefits</u>				
210 Group Insurance – Contracted Provider	1,365.38	1,441.75		2,807.13
220 Social Security Contributions	32,839.70	37,706.45		70,546.15
230 PSERS Retirement Contributions	131,663.24	153,551.97		285,215.21
260 Workers' Compensation	1,908.03	2,175.26		4,083.29
270 Group Insurance – Self-Insurance	80,137.42	78,102.28		158,239.70
Total Personnel Services – Employee Benefits	\$247,913.77	\$272,977.71		\$520,891.48
300 <u>Purchased Professional and Technical Services</u>				
322 Professional Educational Services – lus	129.73	18,652.89	132,683.00	151,465.62
329 Professional Educational Services – Other	274,140.92	200,604.52		474,745.44
330 Other Professional Services	281.35	8,363.59		8,644.94
Total Purchased Professional and Technical Services	\$274,552.00	\$227,621.00	\$132,683.00	\$634,856.00
500 <u>Other Purchased Services</u>				
530 Communications	219.85	835.37		1,055.22
561 Tuition To Other School Districts Within the State		20,732.88		20,732.88
562 Tuition To Pennsylvania Charter Schools	45,080.45	142,829.64		187,910.09
568 Tuition To Private Residential Rehabilitative Institutions (PRRI) [In-State] and Detention Centers		540.00		540.00
Total Other Purchased Services	\$45,300.30	\$164,937.89		\$210,238.19
600 <u>Supplies</u>				
610 General Supplies	277.49	31.50		308.99
640 Books and Periodicals	405.15	36.47		441.62
650 Supplies & Fees – Technology Related		61,509.80		61,509.80
Total Supplies	\$682.64	\$61,577.77		\$62,260.41
800 <u>Other Objects</u>				
810 Dues and Fees	1,345.00	1,345.00		2,690.00
Total Other Objects	\$1,345.00	\$1,345.00		\$2,690.00
Total 1240 Academic Support	\$1,009,232.32	\$1,240,620.66	\$132,683.00	\$2,382,535.98

LEA : 113362303 Eastern Lancaster County SD

Printed 12/7/2017 11:18:58 AM

General Fund (10)				
1241 Learning Support – Public	<u>Elementary</u>	<u>Secondary</u>	<u>Federal</u>	<u>Total</u>
100 <u>Personnel Services – Salaries</u>				
100 Personnel Services – Salaries	380,121.15	423,819.21		803,940.36
Total Personnel Services – Salaries	\$380,121.15	\$423,819.21		\$803,940.36
200 <u>Personnel Services – Employee Benefits</u>				
210 Group Insurance – Contracted Provider	1,284.13	1,263.50		2,547.63
220 Social Security Contributions	28,301.83	31,205.84		59,507.67
230 PSERS Retirement Contributions	114,150.48	127,022.70		241,173.18
260 Workers' Compensation	1,663.84	1,812.46		3,476.30
270 Group Insurance – Self-Insurance	80,137.42	70,972.92		151,110.34
Total Personnel Services – Employee Benefits	\$225,537.70	\$232,277.42		\$457,815.12
300 <u>Purchased Professional and Technical Services</u>				
322 Professional Educational Services – lus	129.73	18,652.89	132,683.00	151,465.62
329 Professional Educational Services – Other	272,528.57	199,285.30		471,813.87
330 Other Professional Services	281.35	8,228.19		8,509.54
Total Purchased Professional and Technical Services	\$272,939.65	\$226,166.38	\$132,683.00	\$631,789.03
500 <u>Other Purchased Services</u>				
530 Communications	49.60	493.51		543.11
561 Tuition To Other School Districts Within the State		20,732.88		20,732.88
562 Tuition To Pennsylvania Charter Schools	45,080.45	142,829.64		187,910.09
568 Tuition To Private Residential Rehabilitative Institutions (PRRI) [In-State] and Detention Centers		540.00		540.00
Total Other Purchased Services	\$45,130.05	\$164,596.03		\$209,726.08
600 <u>Supplies</u>				
610 General Supplies	277.49	31.50		308.99
640 Books and Periodicals	368.67			368.67
650 Supplies & Fees – Technology Related		61,509.80		61,509.80
Total Supplies	\$646.16	\$61,541.30		\$62,187.46
Total 1241 Learning Support – Public	\$924,374.71	\$1,108,400.34	\$132,683.00	\$2,165,458.05

LEA : 113362303 Eastern Lancaster County SD

Printed 12/7/2017 11:18:58 AM

General Fund (10)				
1243 Gifted Support	<u>Elementary</u>	<u>Secondary</u>	<u>Federal</u>	<u>Total</u>
100 <u>Personnel Services – Salaries</u>				
100 Personnel Services – Salaries	59,317.46	88,342.08		147,659.54
Total Personnel Services – Salaries	\$59,317.46	\$88,342.08		\$147,659.54
200 <u>Personnel Services – Employee Benefits</u>				
210 Group Insurance – Contracted Provider	81.25	178.25		259.50
220 Social Security Contributions	4,537.87	6,500.61		11,038.48
230 PSERS Retirement Contributions	17,512.76	26,529.27		44,042.03
260 Workers' Compensation	244.19	362.80		606.99
270 Group Insurance – Self-Insurance		7,129.36		7,129.36
Total Personnel Services – Employee Benefits	\$22,376.07	\$40,700.29		\$63,076.36
300 <u>Purchased Professional and Technical Services</u>				
329 Professional Educational Services – Other	1,612.35	1,319.22		2,931.57
330 Other Professional Services		135.40		135.40
Total Purchased Professional and Technical Services	\$1,612.35	\$1,454.62		\$3,066.97
500 <u>Other Purchased Services</u>				
530 Communications	170.25	341.86		512.11
Total Other Purchased Services	\$170.25	\$341.86		\$512.11
600 <u>Supplies</u>				
640 Books and Periodicals	36.48	36.47		72.95
Total Supplies	\$36.48	\$36.47		\$72.95
800 <u>Other Objects</u>				
810 Dues and Fees	1,345.00	1,345.00		2,690.00
Total Other Objects	\$1,345.00	\$1,345.00		\$2,690.00
Total 1243 Gifted Support	\$84,857.61	\$132,220.32		\$217,077.93

LEA : 113362303 Eastern Lancaster County SD

Printed 12/7/2017 11:18:58 AM

General Fund (10)				
1270 Multi-Handicapped Support	<u>Elementary</u>	<u>Secondary</u>	<u>Federal</u>	<u>Total</u>
100 <u>Personnel Services – Salaries</u>				
100 Personnel Services – Salaries	98,452.62	62,501.36		160,953.98
Total Personnel Services – Salaries	\$98,452.62	\$62,501.36		\$160,953.98
200 <u>Personnel Services – Employee Benefits</u>				
210 Group Insurance – Contracted Provider	312.50	249.25		561.75
220 Social Security Contributions	7,386.93	4,052.20		11,439.13
230 PSERS Retirement Contributions	29,565.39	18,769.26		48,334.65
260 Workers' Compensation	408.54	255.97		664.51
270 Group Insurance – Self-Insurance	16,577.66	16,628.36		33,206.02
Total Personnel Services – Employee Benefits	\$54,251.02	\$39,955.04		\$94,206.06
300 <u>Purchased Professional and Technical Services</u>				
329 Professional Educational Services – Other	69,497.84	45,091.78		114,589.62
Total Purchased Professional and Technical Services	\$69,497.84	\$45,091.78		\$114,589.62
500 <u>Other Purchased Services</u>				
510 Student Transportation Services	6,469.35	2,094.75		8,564.10
530 Communications	4.19	42.81		47.00
550 Printing and Binding		421.00		421.00
580 Travel	59.49	40.95		100.44
Total Other Purchased Services	\$6,533.03	\$2,599.51		\$9,132.54
600 <u>Supplies</u>				
610 General Supplies	4,165.19	1,722.07		5,887.26
630 Food		17.17		17.17
650 Supplies & Fees – Technology Related	479.00	479.00		958.00
Total Supplies	\$4,644.19	\$2,218.24		\$6,862.43
Total 1270 Multi-Handicapped Support	\$233,378.70	\$152,365.93		\$385,744.63

LEA : 113362303 Eastern Lancaster County SD

Printed 12/7/2017 11:18:58 AM

General Fund (10)

1280 Early Intervention Support

	<u>Elementary</u>	<u>Secondary</u>	<u>Federal</u>	<u>Total</u>
300 <u>Purchased Professional and Technical Services</u>				
322 Professional Educational Services – lus	124,516.00		2,378.00	126,894.00
Total Purchased Professional and Technical Services	\$124,516.00		\$2,378.00	\$126,894.00
Total 1280 Early Intervention Support	\$124,516.00		\$2,378.00	\$126,894.00

General Fund (10)

1290 Special Programs - Other Support

<u>Elementary</u>	<u>Secondary</u>	<u>Federal</u>	<u>Total</u>
-------------------	------------------	----------------	--------------

300 Purchased Professional and Technical Services

322 Professional Educational Services – lus		119,876.00	119,876.00
330 Other Professional Services	8,437.03		8,437.03

Total Purchased Professional and Technical Services	\$8,437.03	\$119,876.00	\$128,313.03
---	------------	--------------	--------------

500 Other Purchased Services

567 Tuition To Approved Private Schools (APS) and PA Chartered Schools for the Deaf and Blind	24.74		24.74
---	-------	--	-------

Total Other Purchased Services	\$24.74		\$24.74
--------------------------------	---------	--	---------

Total 1290 Special Programs - Other Support	\$8,461.77	\$119,876.00	\$128,337.77
---	------------	--------------	--------------

LEA : 113362303 Eastern Lancaster County SD

Printed 12/7/2017 11:18:58 AM

General Fund (10)				
1300 Vocational Education	<u>Elementary</u>	<u>Secondary</u>	<u>Federal</u>	<u>Total</u>
100 <u>Personnel Services – Salaries</u>				
100 Personnel Services – Salaries		82,842.87		82,842.87
Total Personnel Services – Salaries		\$82,842.87		\$82,842.87
200 <u>Personnel Services – Employee Benefits</u>				
210 Group Insurance – Contracted Provider		215.75		215.75
220 Social Security Contributions		6,254.17		6,254.17
230 PSERS Retirement Contributions		24,627.48		24,627.48
260 Workers' Compensation		395.46		395.46
270 Group Insurance – Self-Insurance		7,129.36		7,129.36
Total Personnel Services – Employee Benefits		\$38,622.22		\$38,622.22
300 <u>Purchased Professional and Technical Services</u>				
329 Professional Educational Services – Other		10,153.19		10,153.19
Total Purchased Professional and Technical Services		\$10,153.19		\$10,153.19
500 <u>Other Purchased Services</u>				
510 Student Transportation Services		5,569.05		5,569.05
530 Communications		274.51		274.51
564 Tuition To Career and Technology Centers		1,114,686.72		1,114,686.72
580 Travel		201.48		201.48
Total Other Purchased Services		\$1,120,731.76		\$1,120,731.76
600 <u>Supplies</u>				
610 General Supplies		6,627.87		6,627.87
620 Energy		35.04		35.04
640 Books and Periodicals		647.52		647.52
650 Supplies & Fees – Technology Related		3,717.19		3,717.19
Total Supplies		\$11,027.62		\$11,027.62
800 <u>Other Objects</u>				
810 Dues and Fees		2,270.41		2,270.41
Total Other Objects		\$2,270.41		\$2,270.41
Total 1300 Vocational Education		\$1,265,648.07		\$1,265,648.07

LEA : 113362303 Eastern Lancaster County SD

Printed 12/7/2017 11:18:58 AM

General Fund (10)				
1400 Other Instructional Programs – Elementary / Secondary	<u>Elementary</u>	<u>Secondary</u>	<u>Federal</u>	<u>Total</u>
100 <u>Personnel Services – Salaries</u>				
100 Personnel Services – Salaries	32,817.01	91,577.27		124,394.28
Total Personnel Services – Salaries	\$32,817.01	\$91,577.27		\$124,394.28
200 <u>Personnel Services – Employee Benefits</u>				
210 Group Insurance – Contracted Provider		187.25		187.25
220 Social Security Contributions	2,481.33	6,886.51		9,367.84
230 PSERS Retirement Contributions	9,854.92	27,500.61		37,355.53
260 Workers' Compensation	209.99	414.77		624.76
270 Group Insurance – Self-Insurance		9,175.30		9,175.30
Total Personnel Services – Employee Benefits	\$12,546.24	\$44,164.44		\$56,710.68
300 <u>Purchased Professional and Technical Services</u>				
329 Professional Educational Services – Other	2,413.50	21,758.23		24,171.73
Total Purchased Professional and Technical Services	\$2,413.50	\$21,758.23		\$24,171.73
500 <u>Other Purchased Services</u>				
510 Student Transportation Services	2,488.05			2,488.05
561 Tuition To Other School Districts Within the State		32,204.58		32,204.58
580 Travel	63.67	87.76		151.43
Total Other Purchased Services	\$2,551.72	\$32,292.34		\$34,844.06
600 <u>Supplies</u>				
610 General Supplies	105.26	714.39		819.65
630 Food	103.11			103.11
Total Supplies	\$208.37	\$714.39		\$922.76
Total 1400 Other Instructional Programs – Elementary / Secondary	\$50,536.84	\$190,506.67		\$241,043.51

General Fund (10)

1410 Drivers' Education

	<u>Elementary</u>	<u>Secondary</u>	<u>Federal</u>	<u>Total</u>
100 <u>Personnel Services – Salaries</u>				
100 Personnel Services – Salaries		3,385.26		3,385.26
Total Personnel Services – Salaries		\$3,385.26		\$3,385.26
200 <u>Personnel Services – Employee Benefits</u>				
220 Social Security Contributions		247.95		247.95
230 PSERS Retirement Contributions		1,016.59		1,016.59
260 Workers' Compensation		21.67		21.67
Total Personnel Services – Employee Benefits		\$1,286.21		\$1,286.21
Total 1410 Drivers' Education		\$4,671.47		\$4,671.47

LEA : 113362303 Eastern Lancaster County SD

Printed 12/7/2017 11:18:58 AM

General Fund (10)				
1420 Summer School	<u>Elementary</u>	<u>Secondary</u>	<u>Federal</u>	<u>Total</u>
100 <u>Personnel Services – Salaries</u>				
100 Personnel Services – Salaries	13,623.06	13,544.35		27,167.41
Total Personnel Services – Salaries	\$13,623.06	\$13,544.35		\$27,167.41
200 <u>Personnel Services – Employee Benefits</u>				
220 Social Security Contributions	1,027.55	1,016.55		2,044.10
230 PSERS Retirement Contributions	4,090.99	4,067.34		8,158.33
260 Workers’ Compensation	87.23	90.35		177.58
Total Personnel Services – Employee Benefits	\$5,205.77	\$5,174.24		\$10,380.01
300 <u>Purchased Professional and Technical Services</u>				
329 Professional Educational Services – Other		142.11		142.11
Total Purchased Professional and Technical Services		\$142.11		\$142.11
500 <u>Other Purchased Services</u>				
510 Student Transportation Services	2,488.05			2,488.05
Total Other Purchased Services	\$2,488.05			\$2,488.05
Total 1420 Summer School	\$21,316.88	\$18,860.70		\$40,177.58

LEA : 113362303 Eastern Lancaster County SD

Printed 12/7/2017 11:18:58 AM

General Fund (10)				
1430 Homebound Instruction	<u>Elementary</u>	<u>Secondary</u>	<u>Federal</u>	<u>Total</u>
100 <u>Personnel Services – Salaries</u>				
100 Personnel Services – Salaries	7,060.07	85.50		7,145.57
Total Personnel Services – Salaries	\$7,060.07	\$85.50		\$7,145.57
200 <u>Personnel Services – Employee Benefits</u>				
220 Social Security Contributions	530.56	6.34		536.90
230 PSERS Retirement Contributions	2,120.17	25.68		2,145.85
260 Workers’ Compensation	45.19	0.54		45.73
Total Personnel Services – Employee Benefits	\$2,695.92	\$32.56		\$2,728.48
300 <u>Purchased Professional and Technical Services</u>				
329 Professional Educational Services – Other	2,413.50	5,944.15		8,357.65
Total Purchased Professional and Technical Services	\$2,413.50	\$5,944.15		\$8,357.65
500 <u>Other Purchased Services</u>				
580 Travel	63.67	87.76		151.43
Total Other Purchased Services	\$63.67	\$87.76		\$151.43
Total 1430 Homebound Instruction	\$12,233.16	\$6,149.97		\$18,383.13

LEA : 113362303 Eastern Lancaster County SD

Printed 12/7/2017 11:18:58 AM

General Fund (10)				
1440 Alternative Regular Education Programs	<u>Elementary</u>	<u>Secondary</u>	<u>Federal</u>	<u>Total</u>
100 <u>Personnel Services – Salaries</u>				
100 Personnel Services – Salaries		74,510.00		74,510.00
Total Personnel Services – Salaries		\$74,510.00		\$74,510.00
200 <u>Personnel Services – Employee Benefits</u>				
210 Group Insurance – Contracted Provider		187.25		187.25
220 Social Security Contributions		5,611.68		5,611.68
230 PSERS Retirement Contributions		22,375.34		22,375.34
260 Workers' Compensation		301.88		301.88
270 Group Insurance – Self-Insurance		9,175.30		9,175.30
Total Personnel Services – Employee Benefits		\$37,651.45		\$37,651.45
300 <u>Purchased Professional and Technical Services</u>				
329 Professional Educational Services – Other		15,671.97		15,671.97
Total Purchased Professional and Technical Services		\$15,671.97		\$15,671.97
500 <u>Other Purchased Services</u>				
561 Tuition To Other School Districts Within the State		32,204.58		32,204.58
Total Other Purchased Services		\$32,204.58		\$32,204.58
600 <u>Supplies</u>				
610 General Supplies		714.39		714.39
Total Supplies		\$714.39		\$714.39
Total 1440 Alternative Regular Education Programs		\$160,752.39		\$160,752.39

LEA : 113362303 Eastern Lancaster County SD

Printed 12/7/2017 11:18:58 AM

General Fund (10)

1441 Adjudicated / Court-Placed Programs

<u>Elementary</u>	<u>Secondary</u>	<u>Federal</u>	<u>Total</u>
-------------------	------------------	----------------	--------------

500 Other Purchased Services

561 Tuition To Other School Districts Within the State	32,204.58		32,204.58
--	-----------	--	-----------

Total Other Purchased Services	\$32,204.58		\$32,204.58
---------------------------------------	--------------------	--	--------------------

Total 1441 Adjudicated / Court-Placed Programs	\$32,204.58		\$32,204.58
---	--------------------	--	--------------------

General Fund (10)

1442 Alternative Education Programs	<u>Elementary</u>	<u>Secondary</u>	<u>Federal</u>	<u>Total</u>
100 <u>Personnel Services – Salaries</u>				
100 Personnel Services – Salaries		74,510.00		74,510.00
Total Personnel Services – Salaries		\$74,510.00		\$74,510.00
200 <u>Personnel Services – Employee Benefits</u>				
210 Group Insurance – Contracted Provider		187.25		187.25
220 Social Security Contributions		5,611.68		5,611.68
230 PSERS Retirement Contributions		22,375.34		22,375.34
260 Workers' Compensation		301.88		301.88
270 Group Insurance – Self-Insurance		9,175.30		9,175.30
Total Personnel Services – Employee Benefits		\$37,651.45		\$37,651.45
300 <u>Purchased Professional and Technical Services</u>				
329 Professional Educational Services – Other		15,671.97		15,671.97
Total Purchased Professional and Technical Services		\$15,671.97		\$15,671.97
600 <u>Supplies</u>				
610 General Supplies		714.39		714.39
Total Supplies		\$714.39		\$714.39
Total 1442 Alternative Education Programs		\$128,547.81		\$128,547.81

General Fund (10)

1450 Instructional Programs Outside the Established School Day	<u>Elementary</u>	<u>Secondary</u>	<u>Federal</u>	<u>Total</u>
100 <u>Personnel Services – Salaries</u>				
100 Personnel Services – Salaries	12,133.88	52.16		12,186.04
Total Personnel Services – Salaries	\$12,133.88	\$52.16		\$12,186.04
200 <u>Personnel Services – Employee Benefits</u>				
220 Social Security Contributions	923.22	3.99		927.21
230 PSERS Retirement Contributions	3,643.76	15.66		3,659.42
260 Workers’ Compensation	77.57	0.33		77.90
Total Personnel Services – Employee Benefits	\$4,644.55	\$19.98		\$4,664.53
600 <u>Supplies</u>				
610 General Supplies	105.26			105.26
630 Food	103.11			103.11
Total Supplies	\$208.37			\$208.37
Total 1450 Instructional Programs Outside the Established School Day	\$16,986.80	\$72.14		\$17,058.94

LEA : 113362303 Eastern Lancaster County SD

Printed 12/7/2017 11:18:58 AM

General Fund (10)

1500 Nonpublic School Programs

300 Purchased Professional and Technical Services

	<u>Elementary</u>	<u>Secondary</u>	<u>Federal</u>	<u>Total</u>
322 Professional Educational Services – lus			24,437.70	24,437.70
Total Purchased Professional and Technical Services			\$24,437.70	\$24,437.70
Total 1500 Nonpublic School Programs			\$24,437.70	\$24,437.70

LEA : 113362303 Eastern Lancaster County SD

Printed 12/7/2017 11:19:01 AM

General Fund (10)

2000 Support Services		Total
100	<u>Personnel Services – Salaries</u>	
100	Personnel Services – Salaries	6,408,264.92
Total Personnel Services – Salaries		\$6,408,264.92
200	<u>Personnel Services – Employee Benefits</u>	
210	Group Insurance – Contracted Provider	23,219.37
220	Social Security Contributions	470,094.46
230	PSERS Retirement Contributions	1,905,189.90
240	Tuition Reimbursement	298,580.63
260	Workers' Compensation	28,321.10
270	Group Insurance – Self-Insurance	893,837.98
291	Other Retirement Plans	28,872.50
Total Personnel Services – Employee Benefits		\$3,648,115.94
300	<u>Purchased Professional and Technical Services</u>	
322	Professional Educational Services – Ius	172,609.72
324	Professional Educational Services – Employee Training and Development Services	137,683.77
329	Professional Educational Services – Other	120,664.97
330	Other Professional Services	647,101.89
340	Technical Services	65,663.93
350	Security / Safety Services	2,984.00
390	Other Purchased Professional and Technical Services	377,068.51
Total Purchased Professional and Technical Services		\$1,523,776.79
400	<u>Purchased Property Services</u>	
410	Cleaning Services	680,904.91
420	Utility Services	55,264.09
430	Repairs and Maintenance Services	571,895.81
440	Rentals	15,744.97
460	Extermination Services	4,281.00
Total Purchased Property Services		\$1,328,090.78
500	<u>Other Purchased Services</u>	
510	Student Transportation Services	2,537.45
513	Contracted Carriers	2,523,763.60
516	Student Transportation Services From the IU	38,720.72
520	Insurance – General	469.00
523	General Property and Liability Insurance	124,720.00
530	Communications	171,204.90
549	Other Advertising/Public Relations	4,628.47
550	Printing and Binding	37,477.88
580	Travel	34,095.56
595	IU Payments By Withholding	35,492.57
Total Other Purchased Services		\$2,973,110.15
600	<u>Supplies</u>	
610	General Supplies	572,214.19
620	Energy	862,577.98
630	Food	22,506.17

LEA : 113362303 Eastern Lancaster County SD

Printed 12/7/2017 11:19:01 AM

General Fund (10)

2000 Support Services

Total

600 <u>Supplies</u>	
640 Books and Periodicals	43,892.99
650 Supplies & Fees – Technology Related	305,632.84
Total Supplies	\$1,806,824.17
700 <u>Property</u>	
762 Capitalized Equipment - Replacement	387,298.80
Total Property	\$387,298.80
800 <u>Other Objects</u>	
810 Dues and Fees	46,063.63
Total Other Objects	\$46,063.63
Total 2000 Support Services	\$18,121,545.18

LEA : 113362303 Eastern Lancaster County SD

Printed 12/7/2017 11:19:01 AM

General Fund (10)

2100 Support Services – Students	Elementary	Secondary	Federal	Total
100 <u>Personnel Services – Salaries</u>				
100 Personnel Services – Salaries	442,490.47	472,742.46	43,815.36	1,047,311.72
Total Personnel Services – Salaries	\$442,490.47	\$472,742.46	\$43,815.36	\$1,047,311.72
200 <u>Personnel Services – Employee Benefits</u>				
210 Group Insurance – Contracted Provider	1,121.25	1,329.69		2,791.57
220 Social Security Contributions	33,470.82	35,528.17	3,258.83	78,761.95
230 PSERS Retirement Contributions	132,729.67	141,395.70	13,157.81	313,488.53
260 Workers' Compensation	1,809.42	1,975.38	280.48	4,427.77
270 Group Insurance – Self-Insurance	33,796.78	61,501.28		125,805.72
Total Personnel Services – Employee Benefits	\$202,927.94	\$241,730.22	\$16,697.12	\$525,275.54
300 <u>Purchased Professional and Technical Services</u>				
322 Professional Educational Services – lus		6,991.88	128,250.00	135,371.61
329 Professional Educational Services – Other		60,347.43		60,347.43
330 Other Professional Services	1,523.52	790.97		33,272.49
Total Purchased Professional and Technical Services	\$1,523.52	\$68,130.28	\$128,250.00	\$228,991.53
400 <u>Purchased Property Services</u>				
440 Rentals		110.50		110.50
Total Purchased Property Services		\$110.50		\$110.50
500 <u>Other Purchased Services</u>				
510 Student Transportation Services		2,537.45		2,537.45
530 Communications	958.77	4,385.62		5,381.92
550 Printing and Binding	39.25	220.00		298.50
580 Travel	371.63	145.41		517.04
Total Other Purchased Services	\$1,369.65	\$7,288.48		\$8,734.91
600 <u>Supplies</u>				
610 General Supplies	22,319.45	23,607.68		64,928.07
640 Books and Periodicals	937.88	13,618.70		14,556.58
650 Supplies & Fees – Technology Related	1,019.40	3,383.50		4,402.90
Total Supplies	\$24,276.73	\$40,609.88		\$83,887.55
800 <u>Other Objects</u>				
810 Dues and Fees	1,205.00	1,170.00		2,435.00
Total Other Objects	\$1,205.00	\$1,170.00		\$2,435.00
Total 2100 Support Services – Students	\$673,793.31	\$831,781.82	\$188,762.48	\$1,896,746.75

LEA : 113362303 Eastern Lancaster County SD

Printed 12/7/2017 11:19:01 AM

General Fund (10)

2120 Guidance Services	Elementary	Secondary	Federal	Total
100 <u>Personnel Services – Salaries</u>				
100 Personnel Services – Salaries	189,809.15	403,008.00		592,817.15
Total Personnel Services – Salaries	\$189,809.15	\$403,008.00		\$592,817.15
200 <u>Personnel Services – Employee Benefits</u>				
210 Group Insurance – Contracted Provider	595.75	1,178.94		1,774.69
220 Social Security Contributions	14,277.41	30,210.36		44,487.77
230 PSERS Retirement Contributions	56,999.66	121,054.90		178,054.56
260 Workers' Compensation	767.92	1,680.66		2,448.58
270 Group Insurance – Self-Insurance	18,623.60	58,649.56		77,273.16
Total Personnel Services – Employee Benefits	\$91,264.34	\$212,774.42		\$304,038.76
300 <u>Purchased Professional and Technical Services</u>				
322 Professional Educational Services – lus		4,583.30	128,250.00	132,833.30
329 Professional Educational Services – Other		60,347.43		60,347.43
330 Other Professional Services		790.97		790.97
Total Purchased Professional and Technical Services		\$65,721.70	\$128,250.00	\$193,971.70
400 <u>Purchased Property Services</u>				
440 Rentals		110.50		110.50
Total Purchased Property Services		\$110.50		\$110.50
500 <u>Other Purchased Services</u>				
510 Student Transportation Services		2,537.45		2,537.45
530 Communications	16.12	3,791.71		3,807.83
550 Printing and Binding		220.00		220.00
580 Travel		76.61		76.61
Total Other Purchased Services	\$16.12	\$6,625.77		\$6,641.89
600 <u>Supplies</u>				
610 General Supplies	17,049.30	22,158.17		39,207.47
640 Books and Periodicals	612.27	13,496.85		14,109.12
650 Supplies & Fees – Technology Related	107.90	2,725.00		2,832.90
Total Supplies	\$17,769.47	\$38,380.02		\$56,149.49
800 <u>Other Objects</u>				
810 Dues and Fees	453.00	716.00		1,169.00
Total Other Objects	\$453.00	\$716.00		\$1,169.00
Total 2120 Guidance Services	\$299,312.08	\$727,336.41	\$128,250.00	\$1,154,898.49

General Fund (10)

2130 Attendance Services

	<u>Elementary</u>	<u>Secondary</u>	<u>Federal</u>	<u>Total</u>
100 <u>Personnel Services – Salaries</u>				
100 Personnel Services – Salaries				24,518.62
Total Personnel Services – Salaries				\$24,518.62
200 <u>Personnel Services – Employee Benefits</u>				
210 Group Insurance – Contracted Provider				164.69
220 Social Security Contributions				1,677.66
230 PSERS Retirement Contributions				7,362.96
260 Workers' Compensation				98.77
270 Group Insurance – Self-Insurance				16,628.36
Total Personnel Services – Employee Benefits				\$25,932.44
600 <u>Supplies</u>				
610 General Supplies				422.62
Total Supplies				\$422.62
Total 2130 Attendance Services				\$50,873.68

LEA : 113362303 Eastern Lancaster County SD

Printed 12/7/2017 11:19:01 AM

General Fund (10)

2140 Psychological Services	Elementary	Secondary	Federal	Total
100 <u>Personnel Services – Salaries</u>				
100 Personnel Services – Salaries	252,681.32	69,135.96		321,817.28
Total Personnel Services – Salaries	\$252,681.32	\$69,135.96		\$321,817.28
200 <u>Personnel Services – Employee Benefits</u>				
210 Group Insurance – Contracted Provider	525.50	150.75		676.25
220 Social Security Contributions	19,193.41	5,272.75		24,466.16
230 PSERS Retirement Contributions	75,730.01	20,161.05		95,891.06
260 Workers' Compensation	1,041.50	290.93		1,332.43
270 Group Insurance – Self-Insurance	15,173.18	2,851.72		18,024.90
Total Personnel Services – Employee Benefits	\$111,663.60	\$28,727.20		\$140,390.80
300 <u>Purchased Professional and Technical Services</u>				
322 Professional Educational Services – lus		2,408.58		2,408.58
330 Other Professional Services	1,523.52			1,523.52
Total Purchased Professional and Technical Services	\$1,523.52	\$2,408.58		\$3,932.10
500 <u>Other Purchased Services</u>				
530 Communications	942.65	593.91		1,536.56
550 Printing and Binding	39.25			39.25
580 Travel	371.63	68.80		440.43
Total Other Purchased Services	\$1,353.53	\$662.71		\$2,016.24
600 <u>Supplies</u>				
610 General Supplies	5,270.15	1,449.51		6,719.66
640 Books and Periodicals	325.61	121.85		447.46
650 Supplies & Fees – Technology Related	911.50	658.50		1,570.00
Total Supplies	\$6,507.26	\$2,229.86		\$8,737.12
800 <u>Other Objects</u>				
810 Dues and Fees	752.00	454.00		1,206.00
Total Other Objects	\$752.00	\$454.00		\$1,206.00
Total 2140 Psychological Services	\$374,481.23	\$103,618.31		\$478,099.54

LEA : 113362303 Eastern Lancaster County SD

Printed 12/7/2017 11:19:01 AM

General Fund (10)				
2160 Social Work Services	<u>Elementary</u>	<u>Secondary</u>	<u>Federal</u>	<u>Total</u>
100 <u>Personnel Services – Salaries</u>				
100 Personnel Services – Salaries			43,815.36	67,408.36
Total Personnel Services – Salaries			\$43,815.36	\$67,408.36
200 <u>Personnel Services – Employee Benefits</u>				
210 Group Insurance – Contracted Provider				135.25
220 Social Security Contributions			3,258.83	5,013.66
230 PSERS Retirement Contributions			13,157.81	20,242.81
260 Workers' Compensation			280.48	375.94
270 Group Insurance – Self-Insurance				13,879.30
Total Personnel Services – Employee Benefits			\$16,697.12	\$39,646.96
300 <u>Purchased Professional and Technical Services</u>				
330 Other Professional Services				30,958.00
Total Purchased Professional and Technical Services				\$30,958.00
500 <u>Other Purchased Services</u>				
530 Communications				20.20
550 Printing and Binding				39.25
Total Other Purchased Services				\$59.45
600 <u>Supplies</u>				
610 General Supplies				296.51
Total Supplies				\$296.51
Total 2160 Social Work Services			\$60,512.48	\$138,369.28

LEA : 113362303 Eastern Lancaster County SD

Printed 12/7/2017 11:19:01 AM

General Fund (10)				
2170 Student Accounting Services	<u>Elementary</u>	<u>Secondary</u>	<u>Federal</u>	<u>Total</u>
100 <u>Personnel Services – Salaries</u>				
100 Personnel Services – Salaries				40,151.81
Total Personnel Services – Salaries				\$40,151.81
200 <u>Personnel Services – Employee Benefits</u>				
210 Group Insurance – Contracted Provider				40.69
220 Social Security Contributions				3,071.64
230 PSERS Retirement Contributions				11,757.39
260 Workers' Compensation				168.26
Total Personnel Services – Employee Benefits				\$15,037.98
300 <u>Purchased Professional and Technical Services</u>				
322 Professional Educational Services – Ius				129.73
Total Purchased Professional and Technical Services				\$129.73
500 <u>Other Purchased Services</u>				
530 Communications				17.33
Total Other Purchased Services				\$17.33
600 <u>Supplies</u>				
610 General Supplies				18,281.81
Total Supplies				\$18,281.81
800 <u>Other Objects</u>				
810 Dues and Fees				60.00
Total Other Objects				\$60.00
Total 2170 Student Accounting Services				\$73,678.66

General Fund (10)

2190 Other Student Services	<u>Elementary</u>	<u>Secondary</u>	<u>Federal</u>	<u>Total</u>
100 <u>Personnel Services – Salaries</u>				
100 Personnel Services – Salaries		598.50		598.50
Total Personnel Services – Salaries		\$598.50		\$598.50
200 <u>Personnel Services – Employee Benefits</u>				
220 Social Security Contributions		45.06		45.06
230 PSERS Retirement Contributions		179.75		179.75
260 Workers’ Compensation		3.79		3.79
Total Personnel Services – Employee Benefits		\$228.60		\$228.60
Total 2190 Other Student Services		\$827.10		\$827.10

LEA : 113362303 Eastern Lancaster County SD

Printed 12/7/2017 11:19:01 AM

General Fund (10)

2200 Support Services – Instructional Staff	Elementary	Secondary	Federal	Total
100 <u>Personnel Services – Salaries</u>				
100 Personnel Services – Salaries	808,398.39	499,755.39	82,181.00	1,390,334.78
Total Personnel Services – Salaries	\$808,398.39	\$499,755.39	\$82,181.00	\$1,390,334.78
200 <u>Personnel Services – Employee Benefits</u>				
210 Group Insurance – Contracted Provider	2,478.33	2,188.00		4,666.33
220 Social Security Contributions	60,370.84	37,234.17	6,228.73	103,833.74
230 PSERS Retirement Contributions	242,500.26	149,293.63	24,678.92	416,472.81
240 Tuition Reimbursement	152,171.80	86,898.50		239,070.30
260 Workers' Compensation	3,649.76	2,306.32	525.98	6,482.06
270 Group Insurance – Self-Insurance	95,516.97	88,585.62		184,102.59
291 Other Retirement Plans	16,473.60	1,646.40		18,120.00
Total Personnel Services – Employee Benefits	\$573,161.56	\$368,152.64	\$31,433.63	\$972,747.83
300 <u>Purchased Professional and Technical Services</u>				
322 Professional Educational Services – Ius	18,025.00	10,350.00		28,375.00
324 Professional Educational Services – Employee Training and Development Services	82,395.60	17,377.00		99,772.60
329 Professional Educational Services – Other	52,841.98	6,284.27	1,118.00	60,244.25
330 Other Professional Services	3,463.41	3,327.59		6,791.00
390 Other Purchased Professional and Technical Services		293.16		293.16
Total Purchased Professional and Technical Services	\$156,725.99	\$37,632.02	\$1,118.00	\$195,476.01
500 <u>Other Purchased Services</u>				
530 Communications	2,500.82	2,430.84		4,931.66
580 Travel	5,274.25	3,752.40		9,026.65
Total Other Purchased Services	\$7,775.07	\$6,183.24		\$13,958.31
600 <u>Supplies</u>				
610 General Supplies	6,158.89	7,272.31		13,431.20
630 Food		86.27		86.27
640 Books and Periodicals	14,126.78	6,511.99		20,638.77
650 Supplies & Fees – Technology Related	6,108.75	17,841.57		23,950.32
Total Supplies	\$26,394.42	\$31,712.14		\$58,106.56
800 <u>Other Objects</u>				
810 Dues and Fees	329.70	2,230.30		2,560.00
Total Other Objects	\$329.70	\$2,230.30		\$2,560.00
Total 2200 Support Services – Instructional Staff	\$1,572,785.13	\$945,665.73	\$114,732.63	\$2,633,183.49

General Fund (10)

2230 Educational Television Services	<u>Elementary</u>	<u>Secondary</u>	<u>Federal</u>	<u>Total</u>
100 <u>Personnel Services – Salaries</u>				
100 Personnel Services – Salaries		2,564.90		2,564.90
Total Personnel Services – Salaries		\$2,564.90		\$2,564.90
200 <u>Personnel Services – Employee Benefits</u>				
220 Social Security Contributions		192.14		192.14
230 PSERS Retirement Contributions		770.14		770.14
260 Workers’ Compensation		16.39		16.39
Total Personnel Services – Employee Benefits		\$978.67		\$978.67
600 <u>Supplies</u>				
610 General Supplies		1,226.95		1,226.95
650 Supplies & Fees – Technology Related		499.00		499.00
Total Supplies		\$1,725.95		\$1,725.95
Total 2230 Educational Television Services		\$5,269.52		\$5,269.52

LEA : 113362303 Eastern Lancaster County SD

Printed 12/7/2017 11:19:01 AM

General Fund (10)				
2250 School Library Services	<u>Elementary</u>	<u>Secondary</u>	<u>Federal</u>	<u>Total</u>
100 <u>Personnel Services – Salaries</u>				
100 Personnel Services – Salaries	250,602.28	27,597.39		278,199.67
Total Personnel Services – Salaries	\$250,602.28	\$27,597.39		\$278,199.67
200 <u>Personnel Services – Employee Benefits</u>				
210 Group Insurance – Contracted Provider	691.44	142.94		834.38
220 Social Security Contributions	18,729.59	2,081.19		20,810.78
230 PSERS Retirement Contributions	75,239.66	8,287.45		83,527.11
260 Workers' Compensation	963.87	122.14		1,086.01
270 Group Insurance – Self-Insurance	28,075.47	7,608.80		35,684.27
291 Other Retirement Plans	14,760.00			14,760.00
Total Personnel Services – Employee Benefits	\$138,460.03	\$18,242.52		\$156,702.55
300 <u>Purchased Professional and Technical Services</u>				
390 Other Purchased Professional and Technical Services		293.16		293.16
Total Purchased Professional and Technical Services		\$293.16		\$293.16
500 <u>Other Purchased Services</u>				
530 Communications	48.94	75.11		124.05
580 Travel	80.73			80.73
Total Other Purchased Services	\$129.67	\$75.11		\$204.78
600 <u>Supplies</u>				
610 General Supplies	1,162.12	611.13		1,773.25
640 Books and Periodicals	12,748.80	5,671.86		18,420.66
650 Supplies & Fees – Technology Related	5,031.75	15,875.57		20,907.32
Total Supplies	\$18,942.67	\$22,158.56		\$41,101.23
800 <u>Other Objects</u>				
810 Dues and Fees	60.00			60.00
Total Other Objects	\$60.00			\$60.00
Total 2250 School Library Services	\$408,194.65	\$68,366.74		\$476,561.39

LEA : 113362303 Eastern Lancaster County SD

Printed 12/7/2017 11:19:01 AM

General Fund (10)

2260 Instruction and Curriculum Development Services	Elementary	Secondary	Federal	Total
100 Personnel Services – Salaries				
100 Personnel Services – Salaries	548,050.51	452,826.30	82,181.00	1,083,057.81
Total Personnel Services – Salaries	\$548,050.51	\$452,826.30	\$82,181.00	\$1,083,057.81
200 Personnel Services – Employee Benefits				
210 Group Insurance – Contracted Provider	1,786.89	2,045.06		3,831.95
220 Social Security Contributions	40,906.79	33,695.03	6,228.73	80,830.55
230 PSERS Retirement Contributions	163,614.10	135,200.91	24,678.92	323,493.93
260 Workers' Compensation	2,623.69	2,060.67	525.98	5,210.34
270 Group Insurance – Self-Insurance	67,441.50	80,976.82		148,418.32
291 Other Retirement Plans	1,713.60	1,646.40		3,360.00
Total Personnel Services – Employee Benefits	\$278,086.57	\$255,624.89	\$31,433.63	\$565,145.09
300 Purchased Professional and Technical Services				
322 Professional Educational Services – Ius	2,700.00			2,700.00
324 Professional Educational Services – Employee Training and Development Services	6,800.00			6,800.00
329 Professional Educational Services – Other	146.58			146.58
330 Other Professional Services	3,463.41	3,327.59		6,791.00
Total Purchased Professional and Technical Services	\$13,109.99	\$3,327.59		\$16,437.58
500 Other Purchased Services				
530 Communications	2,451.88	2,355.73		4,807.61
580 Travel	2,936.16	971.28		3,907.44
Total Other Purchased Services	\$5,388.04	\$3,327.01		\$8,715.05
600 Supplies				
610 General Supplies	1,629.55	2,199.05		3,828.60
630 Food		86.27		86.27
640 Books and Periodicals	806.77	840.13		1,646.90
650 Supplies & Fees – Technology Related		35.00		35.00
Total Supplies	\$2,436.32	\$3,160.45		\$5,596.77
800 Other Objects				
810 Dues and Fees	269.70	230.30		500.00
Total Other Objects	\$269.70	\$230.30		\$500.00
Total 2260 Instruction and Curriculum Development Services	\$847,341.13	\$718,496.54	\$113,614.63	\$1,679,452.30

LEA : 113362303 Eastern Lancaster County SD

Printed 12/7/2017 11:19:01 AM

General Fund (10)

2270 Instructional Staff Professional Development Services	Elementary	Secondary	Federal	Total
100 <u>Personnel Services – Salaries</u>				
100 Personnel Services – Salaries	9,745.60	16,766.80		26,512.40
Total Personnel Services – Salaries	\$9,745.60	\$16,766.80		\$26,512.40
200 <u>Personnel Services – Employee Benefits</u>				
220 Social Security Contributions	734.46	1,265.81		2,000.27
230 PSERS Retirement Contributions	3,646.50	5,035.13		8,681.63
240 Tuition Reimbursement	152,171.80	86,898.50		239,070.30
260 Workers' Compensation	62.20	107.12		169.32
Total Personnel Services – Employee Benefits	\$156,614.96	\$93,306.56		\$249,921.52
300 <u>Purchased Professional and Technical Services</u>				
322 Professional Educational Services – Ius	15,325.00	10,350.00		25,675.00
324 Professional Educational Services – Employee Training and Development Services	75,595.60	17,377.00		92,972.60
329 Professional Educational Services – Other	52,695.40	6,284.27	1,118.00	60,097.67
Total Purchased Professional and Technical Services	\$143,616.00	\$34,011.27	\$1,118.00	\$178,745.27
500 <u>Other Purchased Services</u>				
580 Travel	2,257.36	2,781.12		5,038.48
Total Other Purchased Services	\$2,257.36	\$2,781.12		\$5,038.48
600 <u>Supplies</u>				
610 General Supplies	3,367.22	3,235.18		6,602.40
640 Books and Periodicals	571.21			571.21
650 Supplies & Fees – Technology Related	1,077.00	1,432.00		2,509.00
Total Supplies	\$5,015.43	\$4,667.18		\$9,682.61
800 <u>Other Objects</u>				
810 Dues and Fees		2,000.00		2,000.00
Total Other Objects		\$2,000.00		\$2,000.00
Total 2270 Instructional Staff Professional Development Services	\$317,249.35	\$153,532.93	\$1,118.00	\$471,900.28

LEA : 113362303 Eastern Lancaster County SD

Printed 12/7/2017 11:19:01 AM

General Fund (10)

2300 Support Services – Administration	Elementary	Secondary	Federal	Total
100 Personnel Services – Salaries				
100 Personnel Services – Salaries	555,348.45	601,920.72		1,559,193.94
Total Personnel Services – Salaries	\$555,348.45	\$601,920.72		\$1,559,193.94
200 Personnel Services – Employee Benefits				
210 Group Insurance – Contracted Provider	2,368.20	3,222.21		7,286.39
220 Social Security Contributions	41,157.24	45,026.62		111,508.04
230 PSERS Retirement Contributions	165,119.36	174,201.30		482,208.82
260 Workers' Compensation	2,442.63	2,498.17		6,590.60
270 Group Insurance – Self-Insurance	66,947.34	98,048.61		203,230.15
291 Other Retirement Plans		387.50		5,327.50
Total Personnel Services – Employee Benefits	\$278,034.77	\$323,384.41		\$816,151.50
300 Purchased Professional and Technical Services				
322 Professional Educational Services – Ius				480.00
324 Professional Educational Services – Employee Training and Development Services				355.50
330 Other Professional Services				180,434.07
Total Purchased Professional and Technical Services				\$181,269.57
400 Purchased Property Services				
410 Cleaning Services	370.20	240.00		610.20
440 Rentals		1,125.00		4,898.75
Total Purchased Property Services	\$370.20	\$1,365.00		\$5,508.95
500 Other Purchased Services				
520 Insurance – General				469.00
530 Communications	274.54	231.50		9,805.08
549 Other Advertising/Public Relations				3,668.22
550 Printing and Binding	1,341.50	4,337.14		25,727.79
580 Travel		83.52		2,944.05
Total Other Purchased Services	\$1,616.04	\$4,652.16		\$42,614.14
600 Supplies				
610 General Supplies	11,627.94	9,941.10		42,266.12
620 Energy				1,079.79
630 Food	4,110.22	5,692.47		21,815.02
640 Books and Periodicals	62.56	2,022.02		8,350.89
650 Supplies & Fees – Technology Related	1,677.75	657.29		2,730.94
Total Supplies	\$17,478.47	\$18,312.88		\$76,242.76
800 Other Objects				
810 Dues and Fees	99.00	1,785.00		11,109.75
Total Other Objects	\$99.00	\$1,785.00		\$11,109.75
Total 2300 Support Services – Administration	\$852,946.93	\$951,420.17		\$2,692,090.61

LEA : 113362303 Eastern Lancaster County SD

Printed 12/7/2017 11:19:01 AM

General Fund (10)

2310 Board Services

Elementary Secondary Federal Total

300 <u>Purchased Professional and Technical Services</u>				
324 Professional Educational Services – Employee Training and Development Services				63.50
330 Other Professional Services				20,500.00
Total Purchased Professional and Technical Services				\$20,563.50
500 <u>Other Purchased Services</u>				
520 Insurance – General				100.00
530 Communications				64.30
549 Other Advertising/Public Relations				3,594.51
Total Other Purchased Services				\$3,758.81
600 <u>Supplies</u>				
610 General Supplies				3,400.00
Total Supplies				\$3,400.00
800 <u>Other Objects</u>				
810 Dues and Fees				21.75
Total Other Objects				\$21.75
Total 2310 Board Services				\$27,744.06

General Fund (10)

2320 Board Treasurer Services	<u>Elementary</u>	<u>Secondary</u>	<u>Federal</u>	<u>Total</u>
300 <u>Purchased Professional and Technical Services</u>				
330 Other Professional Services				600.00
Total Purchased Professional and Technical Services				\$600.00
500 <u>Other Purchased Services</u>				
520 Insurance – General				100.00
Total Other Purchased Services				\$100.00
Total 2320 Board Treasurer Services				\$700.00

LEA : 113362303 Eastern Lancaster County SD

Printed 12/7/2017 11:19:01 AM

General Fund (10)

2330 Tax Assessment and Collection Services	<u>Elementary</u>	<u>Secondary</u>	<u>Federal</u>	<u>Total</u>
100 <u>Personnel Services – Salaries</u>				
100 Personnel Services – Salaries				22,149.11
Total Personnel Services – Salaries				\$22,149.11
200 <u>Personnel Services – Employee Benefits</u>				
210 Group Insurance – Contracted Provider				98.41
220 Social Security Contributions				1,637.88
230 PSERS Retirement Contributions				6,651.28
260 Workers' Compensation				88.29
270 Group Insurance – Self-Insurance				5,747.12
Total Personnel Services – Employee Benefits				\$14,222.98
300 <u>Purchased Professional and Technical Services</u>				
330 Other Professional Services				69,571.96
Total Purchased Professional and Technical Services				\$69,571.96
500 <u>Other Purchased Services</u>				
520 Insurance – General				269.00
530 Communications				9,234.74
549 Other Advertising/Public Relations				73.71
550 Printing and Binding				18,685.02
Total Other Purchased Services				\$28,262.47
600 <u>Supplies</u>				
610 General Supplies				5,514.00
650 Supplies & Fees – Technology Related				275.00
Total Supplies				\$5,789.00
Total 2330 Tax Assessment and Collection Services				\$139,995.52

General Fund (10)

2350 Legal and Accounting Services

Elementary

Secondary

Federal

Total

300 Purchased Professional and Technical Services

330 Other Professional Services

69,064.15

Total Purchased Professional and Technical Services				\$69,064.15
Total 2350 Legal and Accounting Services				\$69,064.15

LEA : 113362303 Eastern Lancaster County SD

Printed 12/7/2017 11:19:01 AM

General Fund (10)				
2360 Office of the Superintendent / Executive Director Services	<u>Elementary</u>	<u>Secondary</u>	<u>Federal</u>	<u>Total</u>
100 <u>Personnel Services – Salaries</u>				
100 Personnel Services – Salaries				379,314.14
Total Personnel Services – Salaries				\$379,314.14
200 <u>Personnel Services – Employee Benefits</u>				
210 Group Insurance – Contracted Provider				1,597.57
220 Social Security Contributions				23,654.23
230 PSERS Retirement Contributions				111,483.99
260 Workers' Compensation				1,558.55
270 Group Insurance – Self-Insurance				32,487.08
291 Other Retirement Plans				4,940.00
Total Personnel Services – Employee Benefits				\$175,721.42
300 <u>Purchased Professional and Technical Services</u>				
322 Professional Educational Services – Ius				480.00
324 Professional Educational Services – Employee Training and Development Services				292.00
330 Other Professional Services				20,697.96
Total Purchased Professional and Technical Services				\$21,469.96
400 <u>Purchased Property Services</u>				
440 Rentals				175.00
Total Purchased Property Services				\$175.00
500 <u>Other Purchased Services</u>				
530 Communications	274.54	263.77		538.31
550 Printing and Binding				858.00
580 Travel				2,860.53
Total Other Purchased Services	\$274.54	\$263.77		\$4,256.84
600 <u>Supplies</u>				
610 General Supplies				4,680.53
620 Energy				1,079.79
630 Food				7,724.18
640 Books and Periodicals				6,266.31
650 Supplies & Fees – Technology Related				120.90
Total Supplies				\$19,871.71
800 <u>Other Objects</u>				
810 Dues and Fees				9,204.00
Total Other Objects				\$9,204.00
Total 2360 Office of the Superintendent / Executive Director Services	\$274.54	\$263.77		\$610,013.07

General Fund (10)

2370 Community Relations Services	<u>Elementary</u>	<u>Secondary</u>	<u>Federal</u>	<u>Total</u>
100 <u>Personnel Services – Salaries</u>				
100 Personnel Services – Salaries				461.52
Total Personnel Services – Salaries				\$461.52
200 <u>Personnel Services – Employee Benefits</u>				
220 Social Security Contributions				32.07
230 PSERS Retirement Contributions				138.60
260 Workers’ Compensation				2.96
Total Personnel Services – Employee Benefits				\$173.63
Total 2370 Community Relations Services				\$635.15

LEA : 113362303 Eastern Lancaster County SD

Printed 12/7/2017 11:19:01 AM

General Fund (10)

2380 Office of the Principal Services	Elementary	Secondary	Federal	Total
100 Personnel Services – Salaries				
100 Personnel Services – Salaries	555,348.45	601,920.72		1,157,269.17
Total Personnel Services – Salaries	\$555,348.45	\$601,920.72		\$1,157,269.17
200 Personnel Services – Employee Benefits				
210 Group Insurance – Contracted Provider	2,368.20	3,222.21		5,590.41
220 Social Security Contributions	41,157.24	45,026.62		86,183.86
230 PSERS Retirement Contributions	165,119.36	174,201.30		339,320.66
260 Workers' Compensation	2,442.63	2,498.17		4,940.80
270 Group Insurance – Self-Insurance	66,947.34	98,048.61		164,995.95
291 Other Retirement Plans		387.50		387.50
Total Personnel Services – Employee Benefits	\$278,034.77	\$323,384.41		\$601,419.18
400 Purchased Property Services				
410 Cleaning Services	370.20	240.00		610.20
440 Rentals		1,125.00		1,125.00
Total Purchased Property Services	\$370.20	\$1,365.00		\$1,735.20
500 Other Purchased Services				
530 Communications		(32.27)		(32.27)
550 Printing and Binding	1,341.50	4,337.14		5,678.64
580 Travel		83.52		83.52
Total Other Purchased Services	\$1,341.50	\$4,388.39		\$5,729.89
600 Supplies				
610 General Supplies	11,627.94	9,941.10		21,569.04
630 Food	4,110.22	5,692.47		9,802.69
640 Books and Periodicals	62.56	2,022.02		2,084.58
650 Supplies & Fees – Technology Related	1,677.75	657.29		2,335.04
Total Supplies	\$17,478.47	\$18,312.88		\$35,791.35
800 Other Objects				
810 Dues and Fees	99.00	1,785.00		1,884.00
Total Other Objects	\$99.00	\$1,785.00		\$1,884.00
Total 2380 Office of the Principal Services	\$852,672.39	\$951,156.40		\$1,803,828.79

LEA : 113362303 Eastern Lancaster County SD

Printed 12/7/2017 11:19:01 AM

General Fund (10)

2390 Other Administration Services	<u>Elementary</u>	<u>Secondary</u>	<u>Federal</u>	<u>Total</u>
200 <u>Personnel Services – Employee Benefits</u>				
230 PSERS Retirement Contributions				24,614.29
Total Personnel Services – Employee Benefits				\$24,614.29
400 <u>Purchased Property Services</u>				
440 Rentals				3,598.75
Total Purchased Property Services				\$3,598.75
500 <u>Other Purchased Services</u>				
550 Printing and Binding				506.13
Total Other Purchased Services				\$506.13
600 <u>Supplies</u>				
610 General Supplies				7,102.55
630 Food				4,288.15
Total Supplies				\$11,390.70
Total 2390 Other Administration Services				\$40,109.87

LEA : 113362303 Eastern Lancaster County SD

Printed 12/7/2017 11:19:01 AM

General Fund (10)				
2400 Support Services – Pupil Health	<u>Elementary</u>	<u>Secondary</u>	<u>Federal</u>	<u>Total</u>
100 <u>Personnel Services – Salaries</u>				
100 Personnel Services – Salaries				463,682.58
Total Personnel Services – Salaries				\$463,682.58
200 <u>Personnel Services – Employee Benefits</u>				
210 Group Insurance – Contracted Provider				1,156.08
220 Social Security Contributions				34,574.31
230 PSERS Retirement Contributions				139,525.66
260 Workers' Compensation				1,908.56
270 Group Insurance – Self-Insurance				77,003.85
Total Personnel Services – Employee Benefits				\$254,168.46
300 <u>Purchased Professional and Technical Services</u>				
322 Professional Educational Services – Ius				7,483.11
330 Other Professional Services			70,070.36	296,726.48
390 Other Purchased Professional and Technical Services				120,010.33
Total Purchased Professional and Technical Services			\$70,070.36	\$424,219.92
400 <u>Purchased Property Services</u>				
410 Cleaning Services				120.00
430 Repairs and Maintenance Services				450.00
440 Rentals				224.00
Total Purchased Property Services				\$794.00
500 <u>Other Purchased Services</u>				
530 Communications				1,709.10
550 Printing and Binding				612.00
580 Travel				725.05
Total Other Purchased Services				\$3,046.15
600 <u>Supplies</u>				
610 General Supplies				7,038.50
640 Books and Periodicals				82.81
650 Supplies & Fees – Technology Related				5,100.00
Total Supplies				\$12,221.31
800 <u>Other Objects</u>				
810 Dues and Fees				260.00
Total Other Objects				\$260.00
Total 2400 Support Services – Pupil Health			\$70,070.36	\$1,158,392.42

LEA : 113362303 Eastern Lancaster County SD

Printed 12/7/2017 11:19:01 AM

General Fund (10)				
2420 Medical Services	<u>Elementary</u>	<u>Secondary</u>	<u>Federal</u>	<u>Total</u>
100 <u>Personnel Services – Salaries</u>				
100 Personnel Services – Salaries				83,965.19
Total Personnel Services – Salaries				\$83,965.19
200 <u>Personnel Services – Employee Benefits</u>				
210 Group Insurance – Contracted Provider				264.69
220 Social Security Contributions				6,263.97
230 PSERS Retirement Contributions				25,214.73
260 Workers' Compensation				338.76
270 Group Insurance – Self-Insurance				15,038.32
Total Personnel Services – Employee Benefits				\$47,120.47
300 <u>Purchased Professional and Technical Services</u>				
322 Professional Educational Services – lus				7,483.11
330 Other Professional Services			70,070.36	296,082.48
390 Other Purchased Professional and Technical Services				89,259.95
Total Purchased Professional and Technical Services			\$70,070.36	\$392,825.54
500 <u>Other Purchased Services</u>				
550 Printing and Binding				612.00
580 Travel				324.29
Total Other Purchased Services				\$936.29
600 <u>Supplies</u>				
610 General Supplies				2,214.96
Total Supplies				\$2,214.96
Total 2420 Medical Services			\$70,070.36	\$527,062.45

LEA : 113362303 Eastern Lancaster County SD

Printed 12/7/2017 11:19:01 AM

General Fund (10)

2430 Dental Services

<u>Elementary</u>	<u>Secondary</u>	<u>Federal</u>	<u>Total</u>
-------------------	------------------	----------------	--------------

300 Purchased Professional and Technical Services

330 Other Professional Services			644.00
---------------------------------	--	--	--------

Total Purchased Professional and Technical Services			\$644.00
--	--	--	-----------------

Total 2430 Dental Services			\$644.00
-----------------------------------	--	--	-----------------

LEA : 113362303 Eastern Lancaster County SD

Printed 12/7/2017 11:19:01 AM

General Fund (10)				
2440 Nursing Services				
	<u>Elementary</u>	<u>Secondary</u>	<u>Federal</u>	<u>Total</u>
100 <u>Personnel Services – Salaries</u>				
100 Personnel Services – Salaries				369,730.19
Total Personnel Services – Salaries				\$369,730.19
200 <u>Personnel Services – Employee Benefits</u>				
210 Group Insurance – Contracted Provider				861.30
220 Social Security Contributions				27,561.84
230 PSERS Retirement Contributions				111,311.86
260 Workers' Compensation				1,529.44
270 Group Insurance – Self-Insurance				60,258.13
Total Personnel Services – Employee Benefits				\$201,522.57
300 <u>Purchased Professional and Technical Services</u>				
390 Other Purchased Professional and Technical Services				30,750.38
Total Purchased Professional and Technical Services				\$30,750.38
400 <u>Purchased Property Services</u>				
410 Cleaning Services				120.00
430 Repairs and Maintenance Services				450.00
440 Rentals				224.00
Total Purchased Property Services				\$794.00
500 <u>Other Purchased Services</u>				
530 Communications				1,709.10
580 Travel				400.76
Total Other Purchased Services				\$2,109.86
600 <u>Supplies</u>				
610 General Supplies				4,823.54
640 Books and Periodicals				82.81
650 Supplies & Fees – Technology Related				5,100.00
Total Supplies				\$10,006.35
800 <u>Other Objects</u>				
810 Dues and Fees				260.00
Total Other Objects				\$260.00
Total 2440 Nursing Services				\$615,173.35

LEA : 113362303 Eastern Lancaster County SD

Printed 12/7/2017 11:19:01 AM

General Fund (10)

2450 Nonpublic Health Services	<u>Elementary</u>	<u>Secondary</u>	<u>Federal</u>	<u>Total</u>
100 <u>Personnel Services – Salaries</u>				
100 Personnel Services – Salaries				9,987.20
Total Personnel Services – Salaries				\$9,987.20
200 <u>Personnel Services – Employee Benefits</u>				
210 Group Insurance – Contracted Provider				30.09
220 Social Security Contributions				748.50
230 PSERS Retirement Contributions				2,999.07
260 Workers' Compensation				40.36
270 Group Insurance – Self-Insurance				1,707.40
Total Personnel Services – Employee Benefits				\$5,525.42
Total 2450 Nonpublic Health Services				\$15,512.62

LEA : 113362303 Eastern Lancaster County SD

Printed 12/7/2017 11:19:01 AM

General Fund (10)				
2500 Support Services – Business	<u>Elementary</u>	<u>Secondary</u>	<u>Federal</u>	<u>Total</u>
100 <u>Personnel Services – Salaries</u>				
100 Personnel Services – Salaries				507,706.10
Total Personnel Services – Salaries				\$507,706.10
200 <u>Personnel Services – Employee Benefits</u>				
210 Group Insurance – Contracted Provider				2,067.18
220 Social Security Contributions				34,643.61
230 PSERS Retirement Contributions				149,065.21
260 Workers' Compensation				2,420.15
270 Group Insurance – Self-Insurance				55,935.99
291 Other Retirement Plans				3,500.00
Total Personnel Services – Employee Benefits				\$247,632.14
300 <u>Purchased Professional and Technical Services</u>				
324 Professional Educational Services – Employee Training and Development Services				16.50
330 Other Professional Services			96.14	5,151.83
Total Purchased Professional and Technical Services			\$96.14	\$5,168.33
400 <u>Purchased Property Services</u>				
410 Cleaning Services				120.00
440 Rentals				1,250.47
Total Purchased Property Services				\$1,370.47
500 <u>Other Purchased Services</u>				
530 Communications				3,319.83
580 Travel				557.32
Total Other Purchased Services				\$3,877.15
600 <u>Supplies</u>				
610 General Supplies				3,644.96
630 Food				446.41
650 Supplies & Fees – Technology Related				16,970.12
Total Supplies				\$21,061.49
800 <u>Other Objects</u>				
810 Dues and Fees				23,104.13
Total Other Objects				\$23,104.13
Total 2500 Support Services – Business			\$96.14	\$809,919.81

LEA : 113362303 Eastern Lancaster County SD

Printed 12/7/2017 11:19:01 AM

General Fund (10)				
2510 Fiscal Services	<u>Elementary</u>	<u>Secondary</u>	<u>Federal</u>	<u>Total</u>
100 <u>Personnel Services – Salaries</u>				
100 Personnel Services – Salaries				487,208.38
Total Personnel Services – Salaries				\$487,208.38
200 <u>Personnel Services – Employee Benefits</u>				
210 Group Insurance – Contracted Provider				1,983.77
220 Social Security Contributions				33,172.93
230 PSERS Retirement Contributions				142,909.74
260 Workers' Compensation				2,330.37
270 Group Insurance – Self-Insurance				52,371.25
291 Other Retirement Plans				3,500.00
Total Personnel Services – Employee Benefits				\$236,268.06
300 <u>Purchased Professional and Technical Services</u>				
324 Professional Educational Services – Employee Training and Development Services				16.50
330 Other Professional Services			96.14	1,281.83
Total Purchased Professional and Technical Services			\$96.14	\$1,298.33
400 <u>Purchased Property Services</u>				
410 Cleaning Services				120.00
440 Rentals				1,250.47
Total Purchased Property Services				\$1,370.47
500 <u>Other Purchased Services</u>				
530 Communications				3,319.83
580 Travel				557.32
Total Other Purchased Services				\$3,877.15
600 <u>Supplies</u>				
610 General Supplies				3,397.46
630 Food				446.41
650 Supplies & Fees – Technology Related				16,970.12
Total Supplies				\$20,813.99
800 <u>Other Objects</u>				
810 Dues and Fees				23,104.13
Total Other Objects				\$23,104.13
Total 2510 Fiscal Services			\$96.14	\$773,940.51

LEA : 113362303 Eastern Lancaster County SD

Printed 12/7/2017 11:19:01 AM

General Fund (10)				
2511 Supervision of Fiscal Services - Head of Component	<u>Elementary</u>	<u>Secondary</u>	<u>Federal</u>	<u>Total</u>
100 <u>Personnel Services – Salaries</u>				
100 Personnel Services – Salaries				450,268.98
Total Personnel Services – Salaries				\$450,268.98
200 <u>Personnel Services – Employee Benefits</u>				
210 Group Insurance – Contracted Provider				1,818.67
220 Social Security Contributions				30,456.05
230 PSERS Retirement Contributions				131,816.85
260 Workers' Compensation				2,377.65
270 Group Insurance – Self-Insurance				45,538.97
291 Other Retirement Plans				3,500.00
Total Personnel Services – Employee Benefits				\$215,508.19
300 <u>Purchased Professional and Technical Services</u>				
324 Professional Educational Services – Employee Training and Development Services				16.50
330 Other Professional Services				1,185.69
Total Purchased Professional and Technical Services				\$1,202.19
400 <u>Purchased Property Services</u>				
410 Cleaning Services				120.00
440 Rentals				1,250.47
Total Purchased Property Services				\$1,370.47
500 <u>Other Purchased Services</u>				
530 Communications				3,319.83
580 Travel				461.01
Total Other Purchased Services				\$3,780.84
600 <u>Supplies</u>				
610 General Supplies				3,397.46
630 Food				446.41
650 Supplies & Fees – Technology Related				13,170.12
Total Supplies				\$17,013.99
800 <u>Other Objects</u>				
810 Dues and Fees				2,712.26
Total Other Objects				\$2,712.26
Total 2511 Supervision of Fiscal Services - Head of Component				\$691,856.92

General Fund (10)

2513 Receiving and Disbursing Funds Services

Elementary Secondary Federal Total

100 <u>Personnel Services – Salaries</u>				
100 Personnel Services – Salaries				8,044.60
Total Personnel Services – Salaries				\$8,044.60
200 <u>Personnel Services – Employee Benefits</u>				
210 Group Insurance – Contracted Provider				7.80
220 Social Security Contributions				595.25
230 PSERS Retirement Contributions				2,415.76
260 Workers' Compensation				51.49
270 Group Insurance – Self-Insurance				1,933.04
Total Personnel Services – Employee Benefits				\$5,003.34
500 <u>Other Purchased Services</u>				
580 Travel				32.11
Total Other Purchased Services				\$32.11
Total 2513 Receiving and Disbursing Funds Services				\$13,080.05

General Fund (10)

2514 Payroll Services

	<u>Elementary</u>	<u>Secondary</u>	<u>Federal</u>	<u>Total</u>
100 <u>Personnel Services – Salaries</u>				
100 Personnel Services – Salaries				10,909.94
Total Personnel Services – Salaries				\$10,909.94
200 <u>Personnel Services – Employee Benefits</u>				
210 Group Insurance – Contracted Provider				141.65
220 Social Security Contributions				813.98
230 PSERS Retirement Contributions				3,276.26
260 Workers' Compensation				(138.85)
270 Group Insurance – Self-Insurance				2,397.12
Total Personnel Services – Employee Benefits				\$6,490.16
600 <u>Supplies</u>				
650 Supplies & Fees – Technology Related				3,800.00
Total Supplies				\$3,800.00
800 <u>Other Objects</u>				
810 Dues and Fees				1,564.17
Total Other Objects				\$1,564.17
Total 2514 Payroll Services				\$22,764.27

General Fund (10)

2515 Financial Accounting Services	<u>Elementary</u>	<u>Secondary</u>	<u>Federal</u>	<u>Total</u>
100 <u>Personnel Services – Salaries</u>				
100 Personnel Services – Salaries				17,984.86
Total Personnel Services – Salaries				\$17,984.86
200 <u>Personnel Services – Employee Benefits</u>				
210 Group Insurance – Contracted Provider				15.65
220 Social Security Contributions				1,307.65
230 PSERS Retirement Contributions				5,400.87
260 Workers' Compensation				40.08
270 Group Insurance – Self-Insurance				2,502.12
Total Personnel Services – Employee Benefits				\$9,266.37
300 <u>Purchased Professional and Technical Services</u>				
330 Other Professional Services			96.14	96.14
Total Purchased Professional and Technical Services			\$96.14	\$96.14
500 <u>Other Purchased Services</u>				
580 Travel				64.20
Total Other Purchased Services				\$64.20
Total 2515 Financial Accounting Services			\$96.14	\$27,411.57

LEA : 113362303 Eastern Lancaster County SD

Printed 12/7/2017 11:19:01 AM

General Fund (10)

2519 Other Fiscal Services

Elementary

Secondary

Federal

Total

800 Other Objects

810 Dues and Fees

18,827.70

Total Other Objects				\$18,827.70
Total 2519 Other Fiscal Services				\$18,827.70

General Fund (10)

2530 Warehousing and Distributing Services	<u>Elementary</u>	<u>Secondary</u>	<u>Federal</u>	<u>Total</u>
100 <u>Personnel Services – Salaries</u>				
100 Personnel Services – Salaries				20,155.72
Total Personnel Services – Salaries				\$20,155.72
200 <u>Personnel Services – Employee Benefits</u>				
210 Group Insurance – Contracted Provider				83.41
220 Social Security Contributions				1,444.94
230 PSERS Retirement Contributions				6,052.77
260 Workers' Compensation				87.59
270 Group Insurance – Self-Insurance				3,564.74
Total Personnel Services – Employee Benefits				\$11,233.45
Total 2530 Warehousing and Distributing Services				\$31,389.17

General Fund (10)

2540 Printing, Publishing and Duplicating Services	<u>Elementary</u>	<u>Secondary</u>	<u>Federal</u>	<u>Total</u>
100 <u>Personnel Services – Salaries</u>				
100 Personnel Services – Salaries				342.00
Total Personnel Services – Salaries				\$342.00
200 <u>Personnel Services – Employee Benefits</u>				
220 Social Security Contributions				25.74
230 PSERS Retirement Contributions				102.70
260 Workers’ Compensation				2.19
Total Personnel Services – Employee Benefits				\$130.63
600 <u>Supplies</u>				
610 General Supplies				247.50
Total Supplies				\$247.50
Total 2540 Printing, Publishing and Duplicating Services				\$720.13

LEA : 113362303 Eastern Lancaster County SD

Printed 12/7/2017 11:19:01 AM

General Fund (10)

2590 Other Support Services – Business	<u>Elementary</u>	<u>Secondary</u>	<u>Federal</u>	<u>Total</u>
300 <u>Purchased Professional and Technical Services</u>				
330 Other Professional Services				3,870.00
Total Purchased Professional and Technical Services				\$3,870.00
Total 2590 Other Support Services – Business				\$3,870.00

LEA : 113362303 Eastern Lancaster County SD

Printed 12/7/2017 11:19:01 AM

General Fund (10)				
2600 Operation and Maintenance of Plant Services	<u>Elementary</u>	<u>Secondary</u>	<u>Federal</u>	<u>Total</u>
100 <u>Personnel Services – Salaries</u>				
100 Personnel Services – Salaries				593,844.55
Total Personnel Services – Salaries				\$593,844.55
200 <u>Personnel Services – Employee Benefits</u>				
210 Group Insurance – Contracted Provider				2,269.47
220 Social Security Contributions				44,203.91
230 PSERS Retirement Contributions				178,031.34
260 Workers' Compensation				2,566.24
270 Group Insurance – Self-Insurance				114,407.08
291 Other Retirement Plans				1,200.00
Total Personnel Services – Employee Benefits				\$342,678.04
300 <u>Purchased Professional and Technical Services</u>				
330 Other Professional Services				103,575.22
350 Security / Safety Services				2,984.00
390 Other Purchased Professional and Technical Services				21,814.19
Total Purchased Professional and Technical Services				\$128,373.41
400 <u>Purchased Property Services</u>				
410 Cleaning Services				680,054.71
420 Utility Services				55,264.09
430 Repairs and Maintenance Services				463,760.79
440 Rentals				10,283.30
460 Extermination Services				4,281.00
Total Purchased Property Services				\$1,213,643.89
500 <u>Other Purchased Services</u>				
523 General Property and Liability Insurance				124,720.00
530 Communications				109.04
Total Other Purchased Services				\$124,829.04
600 <u>Supplies</u>				
610 General Supplies	143,744.52	233,088.61		376,833.13
620 Energy				862,606.23
650 Supplies & Fees – Technology Related				875.00
Total Supplies	\$143,744.52	\$233,088.61		\$1,240,314.36
700 <u>Property</u>				
762 Capitalized Equipment - Replacement				141,226.00
Total Property				\$141,226.00
800 <u>Other Objects</u>				
810 Dues and Fees				2,707.00
Total Other Objects				\$2,707.00
Total 2600 Operation and Maintenance of Plant Services	\$143,744.52	\$233,088.61		\$3,787,616.29

LEA : 113362303 Eastern Lancaster County SD

Printed 12/7/2017 11:19:01 AM

General Fund (10)				
2610 Supervision of Operation and Maintenance of Plant Services	<u>Elementary</u>	<u>Secondary</u>	<u>Federal</u>	<u>Total</u>
100 <u>Personnel Services – Salaries</u>				
100 Personnel Services – Salaries				104,067.00
Total Personnel Services – Salaries				\$104,067.00
200 <u>Personnel Services – Employee Benefits</u>				
210 Group Insurance – Contracted Provider				777.01
220 Social Security Contributions				11,354.92
230 PSERS Retirement Contributions				44,645.41
260 Workers' Compensation				713.38
270 Group Insurance – Self-Insurance				18,780.70
291 Other Retirement Plans				1,200.00
Total Personnel Services – Employee Benefits				\$77,471.42
500 <u>Other Purchased Services</u>				
530 Communications				3.24
Total Other Purchased Services				\$3.24
600 <u>Supplies</u>				
610 General Supplies	709.65	681.82		1,391.47
650 Supplies & Fees – Technology Related				875.00
Total Supplies	\$709.65	\$681.82		\$2,266.47
800 <u>Other Objects</u>				
810 Dues and Fees				480.00
Total Other Objects				\$480.00
Total 2610 Supervision of Operation and Maintenance of Plant Services	\$709.65	\$681.82		\$184,288.13

LEA : 113362303 Eastern Lancaster County SD

Printed 12/7/2017 11:19:01 AM

General Fund (10)				
2611 Supervision of Operation and Maintenance of Plant Services – Head of Component	<u>Elementary</u>	<u>Secondary</u>	<u>Federal</u>	<u>Total</u>
100 <u>Personnel Services – Salaries</u>				
100 Personnel Services – Salaries				104,067.00
Total Personnel Services – Salaries				\$104,067.00
200 <u>Personnel Services – Employee Benefits</u>				
210 Group Insurance – Contracted Provider				777.01
220 Social Security Contributions				11,354.92
230 PSERS Retirement Contributions				44,645.41
260 Workers' Compensation				713.38
270 Group Insurance – Self-Insurance				18,780.70
291 Other Retirement Plans				1,200.00
Total Personnel Services – Employee Benefits				\$77,471.42
500 <u>Other Purchased Services</u>				
530 Communications				3.24
Total Other Purchased Services				\$3.24
600 <u>Supplies</u>				
610 General Supplies	709.65	681.82		1,391.47
650 Supplies & Fees – Technology Related				875.00
Total Supplies	\$709.65	\$681.82		\$2,266.47
800 <u>Other Objects</u>				
810 Dues and Fees				480.00
Total Other Objects				\$480.00
Total 2611 Supervision of Operation and Maintenance of Plant Services – Head of Component	\$709.65	\$681.82		\$184,288.13

LEA : 113362303 Eastern Lancaster County SD

Printed 12/7/2017 11:19:01 AM

General Fund (10)				
2620 Operation of Buildings Services	<u>Elementary</u>	<u>Secondary</u>	<u>Federal</u>	<u>Total</u>
100 <u>Personnel Services – Salaries</u>				
100 Personnel Services – Salaries				412,847.99
Total Personnel Services – Salaries				\$412,847.99
200 <u>Personnel Services – Employee Benefits</u>				
210 Group Insurance – Contracted Provider				923.60
220 Social Security Contributions				27,141.52
230 PSERS Retirement Contributions				110,283.94
260 Workers' Compensation				1,360.48
270 Group Insurance – Self-Insurance				83,857.78
Total Personnel Services – Employee Benefits				\$223,567.32
300 <u>Purchased Professional and Technical Services</u>				
330 Other Professional Services				100.00
390 Other Purchased Professional and Technical Services				21,814.19
Total Purchased Professional and Technical Services				\$21,914.19
400 <u>Purchased Property Services</u>				
410 Cleaning Services				559,412.34
420 Utility Services				54,740.85
430 Repairs and Maintenance Services				92,622.44
440 Rentals				2,350.60
460 Extermination Services				4,281.00
Total Purchased Property Services				\$713,407.23
500 <u>Other Purchased Services</u>				
523 General Property and Liability Insurance				124,720.00
530 Communications				105.80
Total Other Purchased Services				\$124,825.80
600 <u>Supplies</u>				
610 General Supplies	102,964.93	147,545.49		250,510.42
620 Energy				862,563.25
Total Supplies	\$102,964.93	\$147,545.49		\$1,113,073.67
800 <u>Other Objects</u>				
810 Dues and Fees				202.00
Total Other Objects				\$202.00
Total 2620 Operation of Buildings Services	\$102,964.93	\$147,545.49		\$2,609,838.20

LEA : 113362303 Eastern Lancaster County SD

Printed 12/7/2017 11:19:01 AM

General Fund (10)				
2630 Care and Upkeep of Grounds Services	<u>Elementary</u>	<u>Secondary</u>	<u>Federal</u>	<u>Total</u>
100 <u>Personnel Services – Salaries</u>				
100 Personnel Services – Salaries				76,929.56
Total Personnel Services – Salaries				\$76,929.56
200 <u>Personnel Services – Employee Benefits</u>				
210 Group Insurance – Contracted Provider				568.86
220 Social Security Contributions				5,707.47
230 PSERS Retirement Contributions				23,101.99
260 Workers' Compensation				492.38
270 Group Insurance – Self-Insurance				11,768.60
Total Personnel Services – Employee Benefits				\$41,639.30
300 <u>Purchased Professional and Technical Services</u>				
330 Other Professional Services				2,750.00
Total Purchased Professional and Technical Services				\$2,750.00
400 <u>Purchased Property Services</u>				
410 Cleaning Services				120,642.37
430 Repairs and Maintenance Services				10,989.44
Total Purchased Property Services				\$131,631.81
600 <u>Supplies</u>				
610 General Supplies	9,904.51	47,320.98		57,225.49
Total Supplies	\$9,904.51	\$47,320.98		\$57,225.49
Total 2630 Care and Upkeep of Grounds Services	\$9,904.51	\$47,320.98		\$310,176.16

LEA : 113362303 Eastern Lancaster County SD

Printed 12/7/2017 11:19:01 AM

General Fund (10)				
2640 Care and Upkeep of Equipment Services	<u>Elementary</u>	<u>Secondary</u>	<u>Federal</u>	<u>Total</u>
400 <u>Purchased Property Services</u>				
430 Repairs and Maintenance Services				336,807.47
440 Rentals				7,932.70
Total Purchased Property Services				\$344,740.17
600 <u>Supplies</u>				
610 General Supplies	6,348.54	23,371.96		29,720.50
620 Energy				42.98
Total Supplies	\$6,348.54	\$23,371.96		\$29,763.48
800 <u>Other Objects</u>				
810 Dues and Fees				2,025.00
Total Other Objects				\$2,025.00
Total 2640 Care and Upkeep of Equipment Services	\$6,348.54	\$23,371.96		\$376,528.65

LEA : 113362303 Eastern Lancaster County SD

Printed 12/7/2017 11:19:01 AM

General Fund (10)

2650 Vehicle Operation and Maintenance Services (Other Than Student Transportation Vehicles)	<u>Elementary</u>	<u>Secondary</u>	<u>Federal</u>	<u>Total</u>
400 <u>Purchased Property Services</u>				
420 Utility Services				523.24
430 Repairs and Maintenance Services				22,598.44
Total Purchased Property Services				\$23,121.68
600 <u>Supplies</u>				
610 General Supplies	2,296.04	2,205.99		4,502.03
Total Supplies	\$2,296.04	\$2,205.99		\$4,502.03
700 <u>Property</u>				
762 Capitalized Equipment - Replacement				141,226.00
Total Property				\$141,226.00
Total 2650 Vehicle Operation and Maintenance Services (Other Than Student Transportation Vehicles)	\$2,296.04	\$2,205.99		\$168,849.71

LEA : 113362303 Eastern Lancaster County SD

Printed 12/7/2017 11:19:01 AM

General Fund (10)

2660 Safety and Security Services	<u>Elementary</u>	<u>Secondary</u>	<u>Federal</u>	<u>Total</u>
300 <u>Purchased Professional and Technical Services</u>				
330 Other Professional Services				86,789.00
350 Security / Safety Services				2,984.00
Total Purchased Professional and Technical Services				\$89,773.00
400 <u>Purchased Property Services</u>				
430 Repairs and Maintenance Services				743.00
Total Purchased Property Services				\$743.00
600 <u>Supplies</u>				
610 General Supplies	21,520.85	11,962.37		33,483.22
Total Supplies	\$21,520.85	\$11,962.37		\$33,483.22
Total 2660 Safety and Security Services	\$21,520.85	\$11,962.37		\$123,999.22

LEA : 113362303 Eastern Lancaster County SD

Printed 12/7/2017 11:19:01 AM

General Fund (10)

2690 Other Operation and Maintenance of Plant Services	<u>Elementary</u>	<u>Secondary</u>	<u>Federal</u>	<u>Total</u>
300 <u>Purchased Professional and Technical Services</u>				
330 Other Professional Services				13,936.22
Total Purchased Professional and Technical Services				\$13,936.22
Total 2690 Other Operation and Maintenance of Plant Services				\$13,936.22

LEA : 113362303 Eastern Lancaster County SD

Printed 12/7/2017 11:19:01 AM

General Fund (10)				
2700 Student Transportation Services	<u>Elementary</u>	<u>Secondary</u>	<u>Federal</u>	<u>Total</u>
100 <u>Personnel Services – Salaries</u>				
100 Personnel Services – Salaries				96,195.69
Total Personnel Services – Salaries				\$96,195.69
200 <u>Personnel Services – Employee Benefits</u>				
210 Group Insurance – Contracted Provider				479.97
220 Social Security Contributions				6,979.81
230 PSERS Retirement Contributions				28,587.32
260 Workers' Compensation				400.36
270 Group Insurance – Self-Insurance				10,693.98
Total Personnel Services – Employee Benefits				\$47,141.44
300 <u>Purchased Professional and Technical Services</u>				
390 Other Purchased Professional and Technical Services				234,804.25
Total Purchased Professional and Technical Services				\$234,804.25
400 <u>Purchased Property Services</u>				
430 Repairs and Maintenance Services				2,154.99
440 Rentals				(226.05)
Total Purchased Property Services				\$1,928.94
500 <u>Other Purchased Services</u>				
513 Contracted Carriers				2,523,763.60
516 Student Transportation Services From the IU				38,720.72
530 Communications				76.57
550 Printing and Binding				171.59
Total Other Purchased Services				\$2,562,732.48
600 <u>Supplies</u>				
610 General Supplies				24,888.46
620 Energy				(1,108.04)
Total Supplies				\$23,780.42
Total 2700 Student Transportation Services				\$2,966,583.22

LEA : 113362303 Eastern Lancaster County SD

Printed 12/7/2017 11:19:01 AM

General Fund (10)				
2710 Supervision of Student Transportation Services	<u>Elementary</u>	<u>Secondary</u>	<u>Federal</u>	<u>Total</u>
100 <u>Personnel Services – Salaries</u>				
100 Personnel Services – Salaries				96,195.69
Total Personnel Services – Salaries				\$96,195.69
200 <u>Personnel Services – Employee Benefits</u>				
210 Group Insurance – Contracted Provider				479.97
220 Social Security Contributions				6,979.81
230 PSERS Retirement Contributions				28,587.32
260 Workers' Compensation				400.36
270 Group Insurance – Self-Insurance				10,693.98
Total Personnel Services – Employee Benefits				\$47,141.44
300 <u>Purchased Professional and Technical Services</u>				
390 Other Purchased Professional and Technical Services				133.25
Total Purchased Professional and Technical Services				\$133.25
400 <u>Purchased Property Services</u>				
430 Repairs and Maintenance Services				71.99
440 Rentals				(226.05)
Total Purchased Property Services				(\$154.06)
500 <u>Other Purchased Services</u>				
530 Communications				76.57
550 Printing and Binding				171.59
Total Other Purchased Services				\$248.16
600 <u>Supplies</u>				
610 General Supplies				5,586.74
Total Supplies				\$5,586.74
Total 2710 Supervision of Student Transportation Services				\$149,151.22

LEA : 113362303 Eastern Lancaster County SD

Printed 12/7/2017 11:19:01 AM

General Fund (10)				
2711 Supervision of Student Transportation Services – Head of Component	<u>Elementary</u>	<u>Secondary</u>	<u>Federal</u>	<u>Total</u>
100 <u>Personnel Services – Salaries</u>				
100 Personnel Services – Salaries				96,195.69
Total Personnel Services – Salaries				\$96,195.69
200 <u>Personnel Services – Employee Benefits</u>				
210 Group Insurance – Contracted Provider				479.97
220 Social Security Contributions				6,979.81
230 PSERS Retirement Contributions				28,587.32
260 Workers' Compensation				400.36
270 Group Insurance – Self-Insurance				10,693.98
Total Personnel Services – Employee Benefits				\$47,141.44
300 <u>Purchased Professional and Technical Services</u>				
390 Other Purchased Professional and Technical Services				133.25
Total Purchased Professional and Technical Services				\$133.25
400 <u>Purchased Property Services</u>				
430 Repairs and Maintenance Services				71.99
440 Rentals				(226.05)
Total Purchased Property Services				(\$154.06)
500 <u>Other Purchased Services</u>				
530 Communications				76.57
550 Printing and Binding				171.59
Total Other Purchased Services				\$248.16
600 <u>Supplies</u>				
610 General Supplies				5,586.74
Total Supplies				\$5,586.74
Total 2711 Supervision of Student Transportation Services – Head of Component				\$149,151.22

LEA : 113362303 Eastern Lancaster County SD

Printed 12/7/2017 11:19:01 AM

General Fund (10)				
2720 Vehicle Operation Services	<u>Elementary</u>	<u>Secondary</u>	<u>Federal</u>	<u>Total</u>
300 <u>Purchased Professional and Technical Services</u>				
390 Other Purchased Professional and Technical Services				234,671.00
Total Purchased Professional and Technical Services				\$234,671.00
400 <u>Purchased Property Services</u>				
430 Repairs and Maintenance Services				2,083.00
Total Purchased Property Services				\$2,083.00
500 <u>Other Purchased Services</u>				
513 Contracted Carriers				1,962,493.06
516 Student Transportation Services From the IU				38,720.72
Total Other Purchased Services				\$2,001,213.78
600 <u>Supplies</u>				
610 General Supplies				19,301.72
620 Energy				(1,108.04)
Total Supplies				\$18,193.68
Total 2720 Vehicle Operation Services				\$2,256,161.46

LEA : 113362303 Eastern Lancaster County SD

Printed 12/7/2017 11:19:01 AM

General Fund (10)

2750 Nonpublic Transportation	<u>Elementary</u>	<u>Secondary</u>	<u>Federal</u>	<u>Total</u>
500 <u>Other Purchased Services</u>				
513 Contracted Carriers				561,270.54
Total Other Purchased Services				\$561,270.54
Total 2750 Nonpublic Transportation				\$561,270.54

LEA : 113362303 Eastern Lancaster County SD

Printed 12/7/2017 11:19:01 AM

General Fund (10)					
2800 Support Services – Central		Elementary	Secondary	Federal	Total
100 Personnel Services – Salaries					
100 Personnel Services – Salaries					693,930.06
Total Personnel Services – Salaries					\$693,930.06
200 Personnel Services – Employee Benefits					
210 Group Insurance – Contracted Provider					2,502.38
220 Social Security Contributions					51,299.98
230 PSERS Retirement Contributions					197,810.21
240 Tuition Reimbursement					59,510.33
260 Workers' Compensation					3,166.56
270 Group Insurance – Self-Insurance					122,658.62
291 Other Retirement Plans					725.00
Total Personnel Services – Employee Benefits					\$437,673.08
300 Purchased Professional and Technical Services					
322 Professional Educational Services – Ius					900.00
324 Professional Educational Services – Employee Training and Development Services					37,539.17
329 Professional Educational Services – Other					73.29
330 Other Professional Services					21,150.80
340 Technical Services					65,663.93
390 Other Purchased Professional and Technical Services					146.58
Total Purchased Professional and Technical Services					\$125,473.77
400 Purchased Property Services					
430 Repairs and Maintenance Services					105,530.03
440 Rentals					(796.00)
Total Purchased Property Services					\$104,734.03
500 Other Purchased Services					
530 Communications					145,871.70
549 Other Advertising/Public Relations					960.25
550 Printing and Binding					10,668.00
580 Travel					20,325.45
Total Other Purchased Services					\$177,825.40
600 Supplies					
610 General Supplies					39,183.75
630 Food					158.47
640 Books and Periodicals					263.94
650 Supplies & Fees – Technology Related					251,603.56
Total Supplies					\$291,209.72
700 Property					
762 Capitalized Equipment - Replacement					246,072.80
Total Property					\$246,072.80
800 Other Objects					
810 Dues and Fees					3,887.75

LEA : 113362303 Eastern Lancaster County SD

Printed 12/7/2017 11:19:01 AM

General Fund (10)

2800 Support Services – Central

	<u>Elementary</u>	<u>Secondary</u>	<u>Federal</u>	<u>Total</u>
Total Other Objects				\$3,887.75
Total 2800 Support Services – Central				\$2,080,806.61

LEA : 113362303 Eastern Lancaster County SD

Printed 12/7/2017 11:19:01 AM

General Fund (10)				
2810 Planning, Research, Development and Evaluation Services	<u>Elementary</u>	<u>Secondary</u>	<u>Federal</u>	<u>Total</u>
100 <u>Personnel Services – Salaries</u>				
100 Personnel Services – Salaries				643,929.65
Total Personnel Services – Salaries				\$643,929.65
200 <u>Personnel Services – Employee Benefits</u>				
210 Group Insurance – Contracted Provider				1,936.08
220 Social Security Contributions				47,583.82
230 PSERS Retirement Contributions				183,345.59
260 Workers' Compensation				2,935.83
270 Group Insurance – Self-Insurance				118,792.54
Total Personnel Services – Employee Benefits				\$354,593.86
300 <u>Purchased Professional and Technical Services</u>				
340 Technical Services				65,663.93
Total Purchased Professional and Technical Services				\$65,663.93
400 <u>Purchased Property Services</u>				
430 Repairs and Maintenance Services				105,530.03
440 Rentals				(796.00)
Total Purchased Property Services				\$104,734.03
500 <u>Other Purchased Services</u>				
530 Communications				143,464.88
580 Travel				133.58
Total Other Purchased Services				\$143,598.46
600 <u>Supplies</u>				
610 General Supplies				21,414.65
640 Books and Periodicals				263.94
650 Supplies & Fees – Technology Related				251,603.56
Total Supplies				\$273,282.15
700 <u>Property</u>				
762 Capitalized Equipment - Replacement				246,072.80
Total Property				\$246,072.80
800 <u>Other Objects</u>				
810 Dues and Fees				897.00
Total Other Objects				\$897.00
Total 2810 Planning, Research, Development and Evaluation Services				\$1,832,771.88

General Fund (10)

2820 Information Services

Elementary Secondary Federal Total

500 Other Purchased Services

530 Communications 2,406.82

550 Printing and Binding 10,668.00

Total Other Purchased Services \$13,074.82

Total 2820 Information Services \$13,074.82

LEA : 113362303 Eastern Lancaster County SD

Printed 12/7/2017 11:19:01 AM

General Fund (10)

2823 Public Information Services

Elementary Secondary Federal Total

500 Other Purchased Services

530 Communications 2,406.82

550 Printing and Binding 10,668.00

Total Other Purchased Services \$13,074.82

Total 2823 Public Information Services \$13,074.82

LEA : 113362303 Eastern Lancaster County SD

Printed 12/7/2017 11:19:01 AM

General Fund (10)				
2830 Staff Services				
	<u>Elementary</u>	<u>Secondary</u>	<u>Federal</u>	<u>Total</u>
100 <u>Personnel Services – Salaries</u>				
100 Personnel Services – Salaries				50,000.41
Total Personnel Services – Salaries				\$50,000.41
200 <u>Personnel Services – Employee Benefits</u>				
210 Group Insurance – Contracted Provider				566.30
220 Social Security Contributions				3,716.16
230 PSERS Retirement Contributions				14,464.62
240 Tuition Reimbursement				59,510.33
260 Workers' Compensation				230.73
270 Group Insurance – Self-Insurance				3,866.08
291 Other Retirement Plans				725.00
Total Personnel Services – Employee Benefits				\$83,079.22
300 <u>Purchased Professional and Technical Services</u>				
322 Professional Educational Services – Ius				900.00
324 Professional Educational Services – Employee Training and Development Services				37,539.17
329 Professional Educational Services – Other				73.29
330 Other Professional Services				21,150.80
390 Other Purchased Professional and Technical Services				146.58
Total Purchased Professional and Technical Services				\$59,809.84
500 <u>Other Purchased Services</u>				
549 Other Advertising/Public Relations				960.25
580 Travel				20,191.87
Total Other Purchased Services				\$21,152.12
600 <u>Supplies</u>				
610 General Supplies				17,769.10
630 Food				158.47
Total Supplies				\$17,927.57
800 <u>Other Objects</u>				
810 Dues and Fees				2,990.75
Total Other Objects				\$2,990.75
Total 2830 Staff Services				\$234,959.91

LEA : 113362303 Eastern Lancaster County SD

Printed 12/7/2017 11:19:01 AM

General Fund (10)				
2831 Supervision of Staff Services	<u>Elementary</u>	<u>Secondary</u>	<u>Federal</u>	<u>Total</u>
100 <u>Personnel Services – Salaries</u>				
100 Personnel Services – Salaries				42,631.13
Total Personnel Services – Salaries				\$42,631.13
200 <u>Personnel Services – Employee Benefits</u>				
210 Group Insurance – Contracted Provider				566.30
220 Social Security Contributions				3,161.67
230 PSERS Retirement Contributions				12,702.00
260 Workers' Compensation				183.52
270 Group Insurance – Self-Insurance				3,866.08
291 Other Retirement Plans				725.00
Total Personnel Services – Employee Benefits				\$21,204.57
300 <u>Purchased Professional and Technical Services</u>				
330 Other Professional Services				3,500.00
Total Purchased Professional and Technical Services				\$3,500.00
800 <u>Other Objects</u>				
810 Dues and Fees				1,857.50
Total Other Objects				\$1,857.50
Total 2831 Supervision of Staff Services				\$69,193.20

LEA : 113362303 Eastern Lancaster County SD

Printed 12/7/2017 11:19:01 AM

General Fund (10)

2832 Recruitment and Placement Services	<u>Elementary</u>	<u>Secondary</u>	<u>Federal</u>	<u>Total</u>
300 <u>Purchased Professional and Technical Services</u>				
330 Other Professional Services				3,240.52
Total Purchased Professional and Technical Services				\$3,240.52
500 <u>Other Purchased Services</u>				
549 Other Advertising/Public Relations				960.25
Total Other Purchased Services				\$960.25
600 <u>Supplies</u>				
610 General Supplies				2,700.00
Total Supplies				\$2,700.00
800 <u>Other Objects</u>				
810 Dues and Fees				976.25
Total Other Objects				\$976.25
Total 2832 Recruitment and Placement Services				\$7,877.02

LEA : 113362303 Eastern Lancaster County SD

Printed 12/7/2017 11:19:01 AM

General Fund (10)

2833 Staff Accounting Services

Elementary

Secondary

Federal

Total

600 Supplies

610 General Supplies

4,585.00

Total Supplies				\$4,585.00
Total 2833 Staff Accounting Services				\$4,585.00

LEA : 113362303 Eastern Lancaster County SD

Printed 12/7/2017 11:19:01 AM

General Fund (10)				
2834 Staff Development Services – Non-Instructional, Certified Staff Only	<u>Elementary</u>	<u>Secondary</u>	<u>Federal</u>	<u>Total</u>
100 <u>Personnel Services – Salaries</u>				
100 Personnel Services – Salaries				171.00
Total Personnel Services – Salaries				\$171.00
200 <u>Personnel Services – Employee Benefits</u>				
220 Social Security Contributions				13.08
230 PSERS Retirement Contributions				51.35
240 Tuition Reimbursement				59,510.33
260 Workers' Compensation				1.09
Total Personnel Services – Employee Benefits				\$59,575.85
300 <u>Purchased Professional and Technical Services</u>				
322 Professional Educational Services – Ius				900.00
324 Professional Educational Services – Employee Training and Development Services				20,587.12
329 Professional Educational Services – Other				73.29
390 Other Purchased Professional and Technical Services				146.58
Total Purchased Professional and Technical Services				\$21,706.99
500 <u>Other Purchased Services</u>				
580 Travel				11,705.67
Total Other Purchased Services				\$11,705.67
600 <u>Supplies</u>				
610 General Supplies				20.00
Total Supplies				\$20.00
Total 2834 Staff Development Services – Non-Instructional, Certified Staff Only				\$93,179.51

LEA : 113362303 Eastern Lancaster County SD

Printed 12/7/2017 11:19:01 AM

General Fund (10)

2835 Health Services

	<u>Elementary</u>	<u>Secondary</u>	<u>Federal</u>	<u>Total</u>
100 <u>Personnel Services – Salaries</u>				
100 Personnel Services – Salaries				7,198.28
Total Personnel Services – Salaries				\$7,198.28
200 <u>Personnel Services – Employee Benefits</u>				
220 Social Security Contributions				541.41
230 PSERS Retirement Contributions				1,711.27
260 Workers’ Compensation				46.12
Total Personnel Services – Employee Benefits				\$2,298.80
300 <u>Purchased Professional and Technical Services</u>				
330 Other Professional Services				8,070.00
Total Purchased Professional and Technical Services				\$8,070.00
600 <u>Supplies</u>				
610 General Supplies				10,464.10
630 Food				158.47
Total Supplies				\$10,622.57
Total 2835 Health Services				\$28,189.65

LEA : 113362303 Eastern Lancaster County SD

Printed 12/7/2017 11:19:01 AM

General Fund (10)

2836 Staff Development Services – Non-Instructional, Non-Certified Staff Only	<u>Elementary</u>	<u>Secondary</u>	<u>Federal</u>	<u>Total</u>
300 <u>Purchased Professional and Technical Services</u>				
324 Professional Educational Services – Employee Training and Development Services				16,952.05
Total Purchased Professional and Technical Services				\$16,952.05
500 <u>Other Purchased Services</u>				
580 Travel				8,486.20
Total Other Purchased Services				\$8,486.20
800 <u>Other Objects</u>				
810 Dues and Fees				157.00
Total Other Objects				\$157.00
Total 2836 Staff Development Services – Non-Instructional, Non-Certified Staff Only				\$25,595.25

LEA : 113362303 Eastern Lancaster County SD

Printed 12/7/2017 11:19:01 AM

General Fund (10)

2839 Other Staff Services

<u>Elementary</u>	<u>Secondary</u>	<u>Federal</u>	<u>Total</u>
-------------------	------------------	----------------	--------------

300 Purchased Professional and Technical Services

330 Other Professional Services			6,340.28
---------------------------------	--	--	----------

Total Purchased Professional and Technical Services			\$6,340.28
--	--	--	-------------------

Total 2839 Other Staff Services			\$6,340.28
--	--	--	-------------------

LEA : 113362303 Eastern Lancaster County SD

Printed 12/7/2017 11:19:01 AM

General Fund (10)

2900 Other Support Services	<u>Elementary</u>	<u>Secondary</u>	<u>Federal</u>	<u>Total</u>
100 <u>Personnel Services – Salaries</u>				
100 Personnel Services – Salaries				56,065.50
Total Personnel Services – Salaries				\$56,065.50
200 <u>Personnel Services – Employee Benefits</u>				
220 Social Security Contributions				4,289.11
260 Workers’ Compensation				358.80
Total Personnel Services – Employee Benefits				\$4,647.91
500 <u>Other Purchased Services</u>				
595 IU Payments By Withholding				35,492.57
Total Other Purchased Services				\$35,492.57
Total 2900 Other Support Services				\$96,205.98

LEA : 113362303 Eastern Lancaster County SD

Printed 12/7/2017 11:19:01 AM

General Fund (10)

2910 Support Services Not Listed Elsewhere In the 2000 Series	<u>Elementary</u>	<u>Secondary</u>	<u>Federal</u>	<u>Total</u>
100 <u>Personnel Services – Salaries</u>				
100 Personnel Services – Salaries				56,065.50
Total Personnel Services – Salaries				\$56,065.50
200 <u>Personnel Services – Employee Benefits</u>				
220 Social Security Contributions				4,289.11
260 Workers’ Compensation				358.80
Total Personnel Services – Employee Benefits				\$4,647.91
500 <u>Other Purchased Services</u>				
595 IU Payments By Withholding				35,492.57
Total Other Purchased Services				\$35,492.57
Total 2910 Support Services Not Listed Elsewhere In the 2000 Series				\$96,205.98

LEA : 113362303 Eastern Lancaster County SD

Printed 12/7/2017 11:19:05 AM

General Fund (10)

3000 Operation of Non-Instructional Services		Total
100 <u>Personnel Services – Salaries</u>		
100 Personnel Services – Salaries		587,414.48
Total Personnel Services – Salaries		\$587,414.48
200 <u>Personnel Services – Employee Benefits</u>		
210 Group Insurance – Contracted Provider		553.88
220 Social Security Contributions		44,395.07
230 PSERS Retirement Contributions		137,036.29
260 Workers’ Compensation		3,333.82
270 Group Insurance – Self-Insurance		15,549.02
291 Other Retirement Plans		905.69
Total Personnel Services – Employee Benefits		\$201,773.77
300 <u>Purchased Professional and Technical Services</u>		
322 Professional Educational Services – Ius		463.92
324 Professional Educational Services – Employee Training and Development Services		2,805.00
329 Professional Educational Services – Other		232.82
330 Other Professional Services		1,455.40
340 Technical Services		32,504.50
350 Security / Safety Services		2,898.36
390 Other Purchased Professional and Technical Services		92.88
Total Purchased Professional and Technical Services		\$40,452.88
400 <u>Purchased Property Services</u>		
430 Repairs and Maintenance Services		19,488.05
440 Rentals		1,404.00
Total Purchased Property Services		\$20,892.05
500 <u>Other Purchased Services</u>		
510 Student Transportation Services		56,098.22
520 Insurance – General		100.00
530 Communications		395.39
550 Printing and Binding		3,327.87
580 Travel		5,928.47
Total Other Purchased Services		\$65,849.95
600 <u>Supplies</u>		
610 General Supplies		100,350.05
620 Energy		264.51
630 Food		1,312.26
640 Books and Periodicals		11,326.83
650 Supplies & Fees – Technology Related		2,999.00
Total Supplies		\$116,252.65
700 <u>Property</u>		
752 Capital Equipment – Original and Additional		4,500.00
Total Property		\$4,500.00

LEA : 113362303 Eastern Lancaster County SD

Printed 12/7/2017 11:19:05 AM

General Fund (10)	
3000 Operation of Non-Instructional Services	<u>Total</u>
800 <u>Other Objects</u>	
810 Dues and Fees	8,501.75
Total Other Objects	\$8,501.75
Total 3000 Operation of Non-Instructional Services	\$1,045,637.53

LEA : 113362303 Eastern Lancaster County SD

Printed 12/7/2017 11:19:05 AM

General Fund (10)

3200 Student Activities

	Elementary	Secondary	Federal	Total
100 <u>Personnel Services – Salaries</u>				
100 Personnel Services – Salaries				586,530.98
Total Personnel Services – Salaries				\$586,530.98
200 <u>Personnel Services – Employee Benefits</u>				
210 Group Insurance – Contracted Provider				553.88
220 Social Security Contributions				44,328.73
230 PSERS Retirement Contributions				136,770.93
260 Workers' Compensation				3,328.24
270 Group Insurance – Self-Insurance				15,549.02
291 Other Retirement Plans				905.69
Total Personnel Services – Employee Benefits				\$201,436.49
300 <u>Purchased Professional and Technical Services</u>				
324 Professional Educational Services – Employee Training and Development Services				2,805.00
329 Professional Educational Services – Other				232.82
330 Other Professional Services				405.40
340 Technical Services				32,504.50
350 Security / Safety Services				2,898.36
390 Other Purchased Professional and Technical Services				92.88
Total Purchased Professional and Technical Services				\$38,938.96
400 <u>Purchased Property Services</u>				
430 Repairs and Maintenance Services				19,488.05
440 Rentals				1,404.00
Total Purchased Property Services				\$20,892.05
500 <u>Other Purchased Services</u>				
510 Student Transportation Services				56,098.22
520 Insurance – General				100.00
530 Communications				395.39
550 Printing and Binding				3,327.87
580 Travel				5,928.47
Total Other Purchased Services				\$65,849.95
600 <u>Supplies</u>				
610 General Supplies				93,799.68
620 Energy				264.51
630 Food				1,269.06
640 Books and Periodicals				8,722.83
650 Supplies & Fees – Technology Related				2,999.00
Total Supplies				\$107,055.08
700 <u>Property</u>				
752 Capital Equipment – Original and Additional				4,500.00
Total Property				\$4,500.00
800 <u>Other Objects</u>				

LEA : 113362303 Eastern Lancaster County SD

Printed 12/7/2017 11:19:05 AM

General Fund (10)				
3200 Student Activities	<u>Elementary</u>	<u>Secondary</u>	<u>Federal</u>	<u>Total</u>
800 <u>Other Objects</u>				
810 Dues and Fees				8,501.75
Total Other Objects				\$8,501.75
Total 3200 Student Activities				\$1,033,705.26

LEA : 113362303 Eastern Lancaster County SD

Printed 12/7/2017 11:19:05 AM

General Fund (10)				
3300 Community Services	<u>Elementary</u>	<u>Secondary</u>	<u>Federal</u>	<u>Total</u>
100 <u>Personnel Services – Salaries</u>				
100 Personnel Services – Salaries			28.50	883.50
Total Personnel Services – Salaries			\$28.50	\$883.50
200 <u>Personnel Services – Employee Benefits</u>				
220 Social Security Contributions			2.12	66.34
230 PSERS Retirement Contributions			8.56	265.36
260 Workers’ Compensation			0.18	5.58
Total Personnel Services – Employee Benefits			\$10.86	\$337.28
300 <u>Purchased Professional and Technical Services</u>				
322 Professional Educational Services – Ius			463.92	463.92
330 Other Professional Services				1,050.00
Total Purchased Professional and Technical Services			\$463.92	\$1,513.92
600 <u>Supplies</u>				
610 General Supplies			6,550.37	6,550.37
630 Food			28.20	43.20
640 Books and Periodicals			2,604.00	2,604.00
Total Supplies			\$9,182.57	\$9,197.57
Total 3300 Community Services			\$9,685.85	\$11,932.27

General Fund (10)

4000 Facilities Acquisition, Construction and Improvement Services	<u>Total</u>
300 <u>Purchased Professional and Technical Services</u>	
330 Other Professional Services	4,576.61
Total Purchased Professional and Technical Services	\$4,576.61
Total 4000 Facilities Acquisition, Construction and Improvement Services	\$4,576.61

LEA : 113362303 Eastern Lancaster County SD

Printed 12/7/2017 11:19:06 AM

General Fund (10)

4400 Architecture and Engineering Services / Educational Specifications – Improvements	<u>Elementary</u>	<u>Secondary</u>	<u>Federal</u>	<u>Total</u>
300 <u>Purchased Professional and Technical Services</u>				
330 Other Professional Services				4,576.61
Total Purchased Professional and Technical Services				\$4,576.61
Total 4400 Architecture and Engineering Services / Educational Specifications – Improvements				\$4,576.61

General Fund (10)

5000 Other Expenditures and Financing Uses		<u>Total</u>
800 <u>Other Objects</u>		
830 Interest		465,533.68
880 Refunds of Prior Years' Receipts		105,499.13
Total Other Objects		\$571,032.81
900 <u>Other Uses of Funds</u>		
910 Redemption of Principal		2,690,000.00
932 Capital Reserve Fund Transfers Applicable To Fund 32		7,397,337.64
Total Other Uses of Funds		\$10,087,337.64
Total 5000 Other Expenditures and Financing Uses		\$10,658,370.45

General Fund (10)

5100 Debt Service / Other Expenditures and Financing Uses	<u>Elementary</u>	<u>Secondary</u>	<u>Federal</u>	<u>Total</u>
800 <u>Other Objects</u>				
830 Interest				465,533.68
880 Refunds of Prior Years' Receipts				105,499.13
Total Other Objects				\$571,032.81
900 <u>Other Uses of Funds</u>				
910 Redemption of Principal				2,690,000.00
Total Other Uses of Funds				\$2,690,000.00
Total 5100 Debt Service / Other Expenditures and Financing Uses				\$3,261,032.81

LEA : 113362303 Eastern Lancaster County SD

Printed 12/7/2017 11:19:07 AM

General Fund (10)

5110 Debt Service	<u>Elementary</u>	<u>Secondary</u>	<u>Federal</u>	<u>Total</u>
800 <u>Other Objects</u>				
830 Interest				465,533.68
Total Other Objects				\$465,533.68
900 <u>Other Uses of Funds</u>				
910 Redemption of Principal				2,690,000.00
Total Other Uses of Funds				\$2,690,000.00
Total 5110 Debt Service				\$3,155,533.68

LEA : 113362303 Eastern Lancaster County SD

Printed 12/7/2017 11:19:07 AM

General Fund (10)

5130 Refund of Prior Year Revenues / Receipts	<u>Elementary</u>	<u>Secondary</u>	<u>Federal</u>	<u>Total</u>
800 <u>Other Objects</u>				
880 Refunds of Prior Years' Receipts				105,499.13
Total Other Objects				\$105,499.13
Total 5130 Refund of Prior Year Revenues / Receipts				\$105,499.13

General Fund (10)

5200 Interfund Transfers – Out	<u>Elementary</u>	<u>Secondary</u>	<u>Federal</u>	<u>Total</u>
900 <u>Other Uses of Funds</u>				
932 Capital Reserve Fund Transfers Applicable To Fund 32				7,397,337.64
Total Other Uses of Funds				\$7,397,337.64
Total 5200 Interfund Transfers – Out				\$7,397,337.64

LEA : 113362303 Eastern Lancaster County SD

Printed 12/7/2017 11:19:07 AM

General Fund (10)

5230 Capital Projects Fund Transfers	<u>Elementary</u>	<u>Secondary</u>	<u>Federal</u>	<u>Total</u>
900 <u>Other Uses of Funds</u>				
932 Capital Reserve Fund Transfers Applicable To Fund 32				7,397,337.64
Total Other Uses of Funds				\$7,397,337.64
Total 5230 Capital Projects Fund Transfers				\$7,397,337.64

LEA : 113362303 Eastern Lancaster County SD

Printed 12/7/2017 11:19:06 AM

Capital Reserve Fund - § 1431 (32)

4000 Facilities Acquisition, Construction and Improvement Services

Total

300 Purchased Professional and Technical Services

330 Other Professional Services	10,232.40
---------------------------------	-----------

Total Purchased Professional and Technical Services	\$10,232.40
---	-------------

400 Purchased Property Services

450 Construction Services	186,615.00
---------------------------	------------

Total Purchased Property Services	\$186,615.00
-----------------------------------	--------------

Total 4000 Facilities Acquisition, Construction and Improvement Services	\$196,847.40
--	--------------

LEA : 113362303 Eastern Lancaster County SD

Printed 12/7/2017 11:19:06 AM

Capital Reserve Fund - § 1431 (32)

4400 Architecture and Engineering Services / Educational Specifications – Improvements

Elementary

Secondary

Federal

Total

300 Purchased Professional and Technical Services

330 Other Professional Services

10,232.40

Total Purchased Professional and Technical Services

\$10,232.40

Total 4400 Architecture and Engineering Services / Educational Specifications – Improvements

\$10,232.40

LEA : 113362303 Eastern Lancaster County SD

Printed 12/7/2017 11:19:06 AM

Capital Reserve Fund - § 1431 (32)

4600 Existing Building Improvement Services

Elementary

Secondary

Federal

Total

400 Purchased Property Services

450 Construction Services

186,615.00

Total Purchased Property Services				\$186,615.00
Total 4600 Existing Building Improvement Services				\$186,615.00

LEA : 113362303 Eastern Lancaster County SD

Printed 12/7/2017 11:19:08 AM

Capital Reserve Fund - § 1431 (32)

5000 Other Expenditures and Financing Uses		<u>Total</u>
800 <u>Other Objects</u>		
830 Interest		26,897.90
Total Other Objects		\$26,897.90
900 <u>Other Uses of Funds</u>		
910 Redemption of Principal		2,845,000.00
Total Other Uses of Funds		\$2,845,000.00
Total 5000 Other Expenditures and Financing Uses		\$2,871,897.90

Capital Reserve Fund - § 1431 (32)

5100 Debt Service / Other Expenditures and Financing Uses	<u>Elementary</u>	<u>Secondary</u>	<u>Federal</u>	<u>Total</u>
800 <u>Other Objects</u>				
830 Interest				26,897.90
Total Other Objects				\$26,897.90
900 <u>Other Uses of Funds</u>				
910 Redemption of Principal				2,845,000.00
Total Other Uses of Funds				\$2,845,000.00
Total 5100 Debt Service / Other Expenditures and Financing Uses				\$2,871,897.90

Capital Reserve Fund - § 1431 (32)

5110 Debt Service	<u>Elementary</u>	<u>Secondary</u>	<u>Federal</u>	<u>Total</u>
800 <u>Other Objects</u>				
830 Interest				26,897.90
Total Other Objects				\$26,897.90
900 <u>Other Uses of Funds</u>				
910 Redemption of Principal				2,845,000.00
Total Other Uses of Funds				\$2,845,000.00
Total 5110 Debt Service				\$2,871,897.90

LEA : 113362303 Eastern Lancaster County SD

Printed 12/7/2017 11:19:04 AM

Other Capital Projects Fund (39)

2000 Support Services

Total

800 Other Objects
810 Dues and Fees

52,147.66

Total Other Objects	\$52,147.66
Total 2000 Support Services	\$52,147.66

LEA : 113362303 Eastern Lancaster County SD

Printed 12/7/2017 11:19:04 AM

Other Capital Projects Fund (39)

2300 Support Services – Administration

Elementary

Secondary

Federal

Total

800 Other Objects

810 Dues and Fees

52,147.66

Total Other Objects				\$52,147.66
---------------------	--	--	--	-------------

Total 2300 Support Services – Administration				\$52,147.66
--	--	--	--	-------------

LEA : 113362303 Eastern Lancaster County SD

Printed 12/7/2017 11:19:04 AM

Other Capital Projects Fund (39)

2390 Other Administration Services

<u>Elementary</u>	<u>Secondary</u>	<u>Federal</u>	<u>Total</u>
-------------------	------------------	----------------	--------------

800 Other Objects

810 Dues and Fees			52,147.66
-------------------	--	--	-----------

Total Other Objects			\$52,147.66
----------------------------	--	--	--------------------

Total 2390 Other Administration Services			\$52,147.66
---	--	--	--------------------

Other Capital Projects Fund (39)

5000 Other Expenditures and Financing Uses

Total

800 Other Objects	
830 Interest	11,086.04
Total Other Objects	\$11,086.04
900 Other Uses of Funds	
910 Redemption of Principal	9,820,000.00
990 Miscellaneous Other Uses of Funds	82,600.00
Total Other Uses of Funds	\$9,902,600.00
Total 5000 Other Expenditures and Financing Uses	\$9,913,686.04

Other Capital Projects Fund (39)

5100 Debt Service / Other Expenditures and Financing Uses

Elementary

Secondary

Federal

Total

800 <u>Other Objects</u>				
830 Interest				11,086.04
Total Other Objects				\$11,086.04
900 <u>Other Uses of Funds</u>				
910 Redemption of Principal				9,820,000.00
990 Miscellaneous Other Uses of Funds				82,600.00
Total Other Uses of Funds				\$9,902,600.00
Total 5100 Debt Service / Other Expenditures and Financing Uses				\$9,913,686.04

LEA : 113362303 Eastern Lancaster County SD

Printed 12/7/2017 11:19:08 AM

Other Capital Projects Fund (39)

5120 Debt Service – Refunded Bonds	<u>Elementary</u>	<u>Secondary</u>	<u>Federal</u>	<u>Total</u>
800 <u>Other Objects</u>				
830 Interest				11,086.04
Total Other Objects				\$11,086.04
900 <u>Other Uses of Funds</u>				
910 Redemption of Principal				9,820,000.00
Total Other Uses of Funds				\$9,820,000.00
Total 5120 Debt Service – Refunded Bonds				\$9,831,086.04

LEA : 113362303 Eastern Lancaster County SD

Printed 12/7/2017 11:19:08 AM

Other Capital Projects Fund (39)

5150 Bond Discounts

<u>Elementary</u>	<u>Secondary</u>	<u>Federal</u>	<u>Total</u>
-------------------	------------------	----------------	--------------

900 Other Uses of Funds

990 Miscellaneous Other Uses of Funds			82,600.00
---------------------------------------	--	--	-----------

Total Other Uses of Funds			\$82,600.00
----------------------------------	--	--	--------------------

Total 5150 Bond Discounts			\$82,600.00
----------------------------------	--	--	--------------------

LEA : 113362303 Eastern Lancaster County SD

Printed 12/7/2017 11:19:10 AM

	<u>General Fund(10)</u>	<u>Public Purpose Trust(27)</u>	<u>Other Compt Approved (28)</u>	<u>Athletic / Activity(29)</u>	<u>Capital Reserve (690. 1850)(31)</u>
1000 Instruction					
1100 Regular Programs - Elementary / Secondary	19,293,638.43				
1200 Special Programs - Elementary / Secondary	6,580,067.71				
1300 Vocational Education	1,265,648.07				
1400 Other Instructional Programs - Elementary / Secondary	241,043.51				
1500 Nonpublic School Programs	24,437.70				
Total Instruction	\$27,404,835.42				
2000 Support Services					
2100 Support Services - Students	1,896,746.75				
2200 Support Services - Instructional Staff	2,633,183.49				
2300 Support Services - Administration	2,692,090.61				
2400 Support Services - Pupil Health	1,158,392.42				
2500 Support Services - Business	809,919.81				
2600 Operation and Maintenance of Plant Services	3,787,616.29				
2700 Student Transportation Services	2,966,583.22				
2800 Support Services - Central	2,080,806.61				
2900 Other Support Services	96,205.98				
Total Support Services	\$18,121,545.18				
3000 Operation of Non-Instructional Services					
3200 Student Activities	1,033,705.26				
3300 Community Services	11,932.27				
Total Operation of Non-Instructional Services	\$1,045,637.53				
4000 Facilities Acquisition, Construction and Improvement Services					
4400 Architecture and Engineering Services / Educational Specifications - Improvements	4,576.61				
4600 Existing Building Improvement Services					
Total Facilities Acquisition, Construction and Improvement Services	\$4,576.61				
5000 Other Expenditures and Financing Uses					
5100 Debt Service / Other Expenditures and Financing Uses	3,261,032.81				
5200 Interfund Transfers - Out	7,397,337.64				
Total Other Expenditures and Financing Uses	\$10,658,370.45				
TOTAL ACTUAL EXPENDITURES & OTHER FINANCING USES	\$57,234,965.19				

LEA : 113362303 Eastern Lancaster County SD

Printed 12/7/2017 11:19:10 AM

	<u>Capital Reserve (1431)(32)</u>	<u>Other Capital Projects Fund(39)</u>	<u>Debt Service(40)</u>	<u>Permanent(90)</u>	<u>Total</u>
1000 Instruction					
1100 Regular Programs - Elementary / Secondary					19,293,638.43
1200 Special Programs - Elementary / Secondary					6,580,067.71
1300 Vocational Education					1,265,648.07
1400 Other Instructional Programs - Elementary / Secondary					241,043.51
1500 Nonpublic School Programs					24,437.70
Total Instruction					\$27,404,835.42
2000 Support Services					
2100 Support Services - Students					1,896,746.75
2200 Support Services - Instructional Staff					2,633,183.49
2300 Support Services - Administration		52,147.66			2,744,238.27
2400 Support Services - Pupil Health					1,158,392.42
2500 Support Services - Business					809,919.81
2600 Operation and Maintenance of Plant Services					3,787,616.29
2700 Student Transportation Services					2,966,583.22
2800 Support Services - Central					2,080,806.61
2900 Other Support Services					96,205.98
Total Support Services		\$52,147.66			\$18,173,692.84
3000 Operation of Non-Instructional Services					
3200 Student Activities					1,033,705.26
3300 Community Services					11,932.27
Total Operation of Non-Instructional Services					\$1,045,637.53
4000 Facilities Acquisition, Construction and Improvement Services					
4400 Architecture and Engineering Services / Educational Specifications - Improvements	10,232.40				14,809.01
4600 Existing Building Improvement Services	186,615.00				186,615.00
Total Facilities Acquisition, Construction and Improvement Services	\$196,847.40				\$201,424.01
5000 Other Expenditures and Financing Uses					
5100 Debt Service / Other Expenditures and Financing Uses	2,871,897.90	9,913,686.04			16,046,616.75
5200 Interfund Transfers - Out					7,397,337.64
Total Other Expenditures and Financing Uses	\$2,871,897.90	\$9,913,686.04			\$23,443,954.39
TOTAL ACTUAL EXPENDITURES & OTHER FINANCING USES	\$3,068,745.30	\$9,965,833.70			\$70,269,544.19

LEA : 113362303 Eastern Lancaster County SD

Printed 12/7/2017 11:19:19 AM

PSERS Salary Data (Salary Data should relate to the General Fund only)

Amount	Description	Amount
	Total Salary Base for salaries subject to PSERS withholding	17,885,742.77
	Total Federally Funded salaries subject to PSERS withholding	821,246.06

Title I Expenditure Data

Amount	Description	Amount
	Expenditures Funded with Current Title I Funds	780,884.22
	Expenditures Funded with Carry over Title I Funds	
Total	Title I Expenditure Data	\$780,884.22

Title I ARRA Amount

Amount	Description	Amount
	Portion of Total Title I Expenditures funded with ARRA Title I	

Benefits for Staff Relative to Collective Bargaining Agreements

	OBJECT	COVERED	NOT COVERED	TOTAL
10 General Fund				
	211 Medical Insurance			
	212 Dental Insurance			
	215 Eye Care Insurance			
	216 Prescription Insurance			
	271 Self-Insurance Medical Benefits		1,600.00	1,600.00
	272 Self-Insurance Dental Benefits			
	275 Self-Insurance Eye Care Benefits			
	276 Self-Insurance Prescription Benefits			
	FUND TOTAL		\$1,600.00	\$1,600.00
50 Enterprise Fund	No Self Insurance data to report			
	211 Medical Insurance			
	212 Dental Insurance			
	215 Eye Care Insurance			
	216 Prescription Insurance			
	271 Self-Insurance Medical Benefits			
	272 Self-Insurance Dental Benefits			
	275 Self-Insurance Eye Care Benefits			
	276 Self-Insurance Prescription Benefits			
	FUND TOTAL			
60 Internal Service Fund				
	211 Medical Insurance			
	212 Dental Insurance			
	215 Eye Care Insurance			
	216 Prescription Insurance			
	271 Self-Insurance Medical Benefits	1,795,011.38	598,337.13	2,393,348.51
	272 Self-Insurance Dental Benefits	124,849.90	39,426.29	164,276.19
	275 Self-Insurance Eye Care Benefits			
	276 Self-Insurance Prescription Benefits	314,697.17	104,899.06	419,596.23
	FUND TOTAL	\$2,234,558.45	\$742,662.48	\$2,977,220.93
Total of All Funds		\$2,234,558.45	\$744,262.48	\$2,978,820.93

LEA : 113362303 Eastern Lancaster County SD

Printed 12/7/2017 11:19:20 AM

Function	Special Education (Prior Year)	Nonspecial Education (Prior Year)	Total (Prior Year)	Special Education (Current Year)	Nonspecial Education (Current Year)	Total (Current Year)
2120 Guidance Services	386,639.88	802,373.94	1,189,013.82	318,294.21	836,604.28	1,154,898.49
2140 Psychological Services	298,295.95	158,398.92	456,694.87	325,758.92	152,340.62	478,099.54
2150 Speech Pathology and Audiology Services						
2160 Social Work Services	87,522.10	47,881.54	135,403.64	90,715.52	47,653.76	138,369.28
2260 Instruction and Curriculum Development Services	977,070.55	618,968.80	1,596,039.35	913,636.33	765,815.97	1,679,452.30
2350 Legal and Accounting Services	8,183.94	75,952.00	84,135.94	13,322.15	55,742.00	69,064.15
2420 Medical Services	461,777.04	8,311.70	470,088.74	521,514.49	5,547.96	527,062.45
2440 Nursing Services	74,211.07	519,477.50	593,688.57	76,896.67	538,276.68	615,173.35
2700 Student Transportation Services	687,370.74	2,115,564.71	2,802,935.45	730,697.17	2,235,886.05	2,966,583.22
Total	\$2,981,071.27	\$4,346,929.11	\$7,328,000.38	\$2,990,835.46	\$4,637,867.32	\$7,628,702.78

LEA : 113362303 Eastern Lancaster County SD

Printed 12/7/2017 11:19:21 AM

(PRINCIPAL AMOUNTS ONLY)

GOVERNMENTAL FUNDS/ ACTIVITIES

	Short-Term Borrowing	General Obligation Bonds/Notes	Authority Building Obligations	Other Long-Term Debt	Other Post- Employment Benefits (OPEB)	Compensated Absences	Net Pension Liability	Total
1. Debt at Beginning of Fiscal Year		20,895,000.00	1,422,579.00		(2,880.00)	495,549.00	63,067,000.00	85,877,248.00
2. Additional Debt Incurred During Year		9,440,000.00	9,339.00		291,148.00	28,284.00	10,330,515.00	20,099,286.00
3. Retirements and Repayments		15,355,000.00			285,055.00	1,661.00		15,641,716.00
4. Debt at End of Fiscal Year		14,980,000.00	1,431,918.00		3,213.00	522,172.00	73,397,515.00	90,334,818.00
5. Accreted Interest at End Of Fiscal Year								
6. Total Debt and Accreted Interest		14,980,000.00	1,431,918.00		3,213.00	522,172.00	73,397,515.00	90,334,818.00
7. Current Portion P&I - Due within 1 year		3,429,018.56	98,075.00			12,120.00		3,539,213.56
8. Interest Paid during current fiscal year		503,521.44	51,506.00					555,027.44

(PRINCIPAL AMOUNTS ONLY)

PROPRIETARY FUNDS

	Short-Term Borrowing	General Obligation Bonds/Notes	Authority Building Obligations	Other Long-Term Debt	Other Post- Employment Benefits (OPEB)	Compensated Absences	Net Pension Liability	Total
1. Debt at Beginning of Fiscal Year								
2. Additional Debt Incurred During Year							590,828.00	590,828.00
3. Retirements and Repayments								
4. Debt at End of Fiscal Year							590,828.00	590,828.00
5. Accreted Interest at End Of Fiscal Year								
6. Total Debt and Accreted Interest							590,828.00	590,828.00
7. Current Portion P&I - Due within 1 year								
8. Interest Paid during current fiscal year								

LEA : 113362303 Eastern Lancaster County SD

Printed 12/7/2017 11:19:21 AM

Total Principal and Interest Payments Made by Your School - All Funds

Function	Fund		Principal (910)	Principal (920)	Interest (830)	Total (Principal +Interest)	Misc Other Uses (990)
5110	10	General Fund	2,690,000.00		465,533.68	3,155,533.68	
5110	20	Special Revenue Funds					
5110	30	Capital Projects Funds	2,845,000.00		26,897.90	2,871,897.90	
5110	40	Debt Service Fund					
5110	90	Permanent Fund					
5120	10	General Fund					
5120	20	Special Revenue Funds					
5120	30	Capital Projects Funds	9,820,000.00		11,086.04	9,831,086.04	
5120	40	Debt Service Fund					
Total Debt Payments - Governmental Funds			\$15,355,000.00		\$503,517.62	\$15,858,517.62	
Function	Fund		Principal (910)	Principal (920)	Interest (830)	Total (Principal +Interest)	
5110	50	Enterprise Fund					
5110	60	Internal Service Fund					
5120	50	Enterprise Fund					
5120	60	Internal Service Fund					
Total Debt Payments - Proprietary Funds							

LEA : 113362303 Eastern Lancaster County SD

Printed 12/7/2017 11:19:21 AM

Debt Details
Governmental Funds/ Activities

Debt Category	Debt Issue Date (MM/YYYY)	Principal Amounts Only				Current Portion Due Within One Year (Principal and Interest)	Interest Paid During Fiscal Year
		Debt at Beginning of Fiscal Year	Additions	Reductions / Repayments	Debt at End of Fiscal Year		
General Obligation Bonds/Notes – CIB	03/2017		9,440,000.00		9,440,000.00	550,818.56	1.00
General Obligation Bonds/Notes – CIB	02/2015	9,825,000.00		9,825,000.00			260,641.04
General Obligation Bonds/Notes – CIB	12/2014	2,845,000.00		2,845,000.00			63,029.40
General Obligation Bonds/Notes – CIB	04/2013	1,510,000.00		740,000.00	770,000.00	793,100.00	45,300.00
General Obligation Bonds/Notes – CIB	10/2012	6,715,000.00		1,945,000.00	4,770,000.00	2,085,100.00	134,550.00
Authority Building Obligations – CIB	06/2012	1,422,579.00	9,339.00		1,431,918.00	98,075.00	51,506.00
Compensated Absences		495,549.00	28,284.00	1,661.00	522,172.00	12,120.00	
Other Post-Employment Benefits (OPEB)		(2,880.00)	291,148.00	285,055.00	3,213.00		
Net Pension Liability		63,067,000.00	10,330,515.00		73,397,515.00		
Totals for Debt Entered:		\$85,877,248.00	\$20,099,286.00	\$15,641,716.00	\$90,334,818.00	\$3,539,213.56	\$555,027.44

Bond Details
Proprietary Funds

Debt Category	Debt Issue Date (MM/YYYY)	Principal Amounts Only				Current Portion Due Within One Year (Principal and Interest)	Interest Paid During Fiscal Year
		Debt at Beginning of Fiscal Year	Additions	Reductions / Repayments	Debt at End of Fiscal Year		
Net Pension Liability			590,828.00		590,828.00		
Totals for Debt Entered:			\$590,828.00		\$590,828.00		

LEA : 113362303 Eastern Lancaster County SD

Printed 12/7/2017 11:19:22 AM

General Fund (10)

Section 1: Tuition/Purchased Services as Reported within Expenditure Detail	Amount
Tuition Reported in General Fund Expenditures 1000-560	1,980,365.54
Purchased Services in General Fund Expenditures 1000-594 and 1000-597	
Section 1 Total	\$1,980,365.54

Section 2: Tuition Paid to Institution Types During Fiscal Year	Tuition Paid For Nonspecial Education	Tuition Paid For Special Education	Total
1 1306 Institutions			
2 Institutionalized Children's Programs			
3 Juveniles Incarcerated in Adult Facilities			
4 Residential Treatment Facilities			
5 Other Local Education Agencies	31,074.42	43,719.39	74,793.81
6 Brick and Mortar Charter Schools			
7 Cyber Charter Schools	488,116.97	216,525.51	704,642.48
8 Career and Technology Centers	764,981.12	349,705.60	1,114,686.72
9 Approved Private Schools		77,097.74	77,097.74
10 PA Chartered Schools for the Deaf and Blind			
11 Private Residential Rehabilitative Institutions	5,244.79	1,380.00	6,624.79
12 Juvenile Detention Centers			
13 Special Program Jointures			
14 Other Tuition Not Included Elsewhere In This Section		2,520.00	2,520.00
Section 2 Total	\$1,289,417.30	\$690,948.24	\$1,980,365.54

Food Service / Cafeteria Operations Fund (51)

2000 Support Services

Total

300 Purchased Professional and Technical Services

324 Professional Educational Services – Employee Training and Development Services	1,697.00
--	----------

Total Purchased Professional and Technical Services	\$1,697.00
---	------------

Total 2000 Support Services	\$1,697.00
-----------------------------	------------

LEA : 113362303 Eastern Lancaster County SD

Printed 12/7/2017 11:19:23 AM

Food Service / Cafeteria Operations Fund (51)

2800 Support Services – Central

Elementary Secondary Federal Total

300 Purchased Professional and Technical Services

324 Professional Educational Services – Employee Training and Development Services 1,697.00

Total Purchased Professional and Technical Services \$1,697.00

Total 2800 Support Services – Central \$1,697.00

Food Service / Cafeteria Operations Fund (51)

2830 Staff Services	<u>Elementary</u>	<u>Secondary</u>	<u>Federal</u>	<u>Total</u>
300 <u>Purchased Professional and Technical Services</u>				
324 Professional Educational Services – Employee Training and Development Services				1,697.00
Total Purchased Professional and Technical Services				\$1,697.00
Total 2830 Staff Services				\$1,697.00

Food Service / Cafeteria Operations Fund (51)

2836 Staff Development Services – Non-Instructional, Non-Certified Staff Only	<u>Elementary</u>	<u>Secondary</u>	<u>Federal</u>	<u>Total</u>
300 <u>Purchased Professional and Technical Services</u>				
324 Professional Educational Services – Employee Training and Development Services				1,697.00
Total Purchased Professional and Technical Services				\$1,697.00
Total 2836 Staff Development Services – Non-Instructional, Non-Certified Staff Only				\$1,697.00

LEA : 113362303 Eastern Lancaster County SD

Printed 12/7/2017 11:19:25 AM

Food Service / Cafeteria Operations Fund (51)

3000 Operation of Non-Instructional Services		Total
100 <u>Personnel Services – Salaries</u>		
100 Personnel Services – Salaries		164,617.99
Total Personnel Services – Salaries		\$164,617.99
200 <u>Personnel Services – Employee Benefits</u>		
210 Group Insurance – Contracted Provider		411.93
220 Social Security Contributions		12,040.55
230 PSERS Retirement Contributions		(59,223.22)
260 Workers’ Compensation		1,053.54
270 Group Insurance – Self-Insurance		51,423.20
Total Personnel Services – Employee Benefits		\$5,706.00
300 <u>Purchased Professional and Technical Services</u>		
324 Professional Educational Services – Employee Training and Development Services		370.00
330 Other Professional Services		1,500.00
Total Purchased Professional and Technical Services		\$1,870.00
400 <u>Purchased Property Services</u>		
430 Repairs and Maintenance Services		17,253.00
Total Purchased Property Services		\$17,253.00
500 <u>Other Purchased Services</u>		
530 Communications		1,204.19
570 Food Service Management		367,946.11
580 Travel		686.70
Total Other Purchased Services		\$369,837.00
600 <u>Supplies</u>		
610 General Supplies		33,846.15
620 Energy		33.18
630 Food		620,786.56
650 Supplies & Fees – Technology Related		7,045.00
Total Supplies		\$661,710.89
700 <u>Property</u>		
740 Depreciation		17,657.00
Total Property		\$17,657.00
800 <u>Other Objects</u>		
810 Dues and Fees		8,537.98
Total Other Objects		\$8,537.98
Total 3000 Operation of Non-Instructional Services		\$1,247,189.86

LEA : 113362303 Eastern Lancaster County SD

Printed 12/7/2017 11:19:25 AM

Food Service / Cafeteria Operations Fund (51)

3100 Food Services	Elementary	Secondary	Federal	Total
100 <u>Personnel Services – Salaries</u>				
100 Personnel Services – Salaries				164,617.99
Total Personnel Services – Salaries				\$164,617.99
200 <u>Personnel Services – Employee Benefits</u>				
210 Group Insurance – Contracted Provider				411.93
220 Social Security Contributions				12,040.55
230 PSERS Retirement Contributions				(59,223.22)
260 Workers' Compensation				1,053.54
270 Group Insurance – Self-Insurance				51,423.20
Total Personnel Services – Employee Benefits				\$5,706.00
300 <u>Purchased Professional and Technical Services</u>				
324 Professional Educational Services – Employee Training and Development Services				370.00
330 Other Professional Services				1,500.00
Total Purchased Professional and Technical Services				\$1,870.00
400 <u>Purchased Property Services</u>				
430 Repairs and Maintenance Services				17,253.00
Total Purchased Property Services				\$17,253.00
500 <u>Other Purchased Services</u>				
530 Communications				1,204.19
570 Food Service Management				367,946.11
580 Travel				686.70
Total Other Purchased Services				\$369,837.00
600 <u>Supplies</u>				
610 General Supplies				33,846.15
620 Energy				33.18
630 Food				620,786.56
650 Supplies & Fees – Technology Related				7,045.00
Total Supplies				\$661,710.89
700 <u>Property</u>				
740 Depreciation				17,657.00
Total Property				\$17,657.00
800 <u>Other Objects</u>				
810 Dues and Fees				8,537.98
Total Other Objects				\$8,537.98
Total 3100 Food Services				\$1,247,189.86

Internal Service Fund (60)

2000 Support Services

Total

200 Personnel Services – Employee Benefits

250	Unemployment Compensation	8,827.80
270	Group Insurance – Self-Insurance	2,977,220.93
292	Health Savings Accounts	413,283.33
299	All Other Employee Benefits	32,165.82

Total Personnel Services – Employee Benefits		\$3,431,497.88
--	--	----------------

300 Purchased Professional and Technical Services

330	Other Professional Services	52,309.00
-----	-----------------------------	-----------

Total Purchased Professional and Technical Services		\$52,309.00
---	--	-------------

800 Other Objects

810	Dues and Fees	472.64
-----	---------------	--------

Total Other Objects		\$472.64
---------------------	--	----------

Total 2000 Support Services		\$3,484,279.52
-----------------------------	--	----------------

Internal Service Fund (60)

2900 Other Support Services

<u>Elementary</u>	<u>Secondary</u>	<u>Federal</u>	<u>Total</u>
-------------------	------------------	----------------	--------------

200 Personnel Services – Employee Benefits

250	Unemployment Compensation		8,827.80
270	Group Insurance – Self-Insurance		2,977,220.93
292	Health Savings Accounts		413,283.33
299	All Other Employee Benefits		32,165.82

Total Personnel Services – Employee Benefits			\$3,431,497.88
---	--	--	-----------------------

300 Purchased Professional and Technical Services

330	Other Professional Services		52,309.00
-----	-----------------------------	--	-----------

Total Purchased Professional and Technical Services			\$52,309.00
--	--	--	--------------------

800 Other Objects

810	Dues and Fees		472.64
-----	---------------	--	--------

Total Other Objects			\$472.64
----------------------------	--	--	-----------------

Total 2900 Other Support Services			\$3,484,279.52
--	--	--	-----------------------

Internal Service Fund (60)

2910 Support Services Not Listed Elsewhere In the 2000 Series

Elementary Secondary Federal Total

200 <u>Personnel Services – Employee Benefits</u>			
250 Unemployment Compensation			8,827.80
270 Group Insurance – Self-Insurance			2,977,220.93
292 Health Savings Accounts			413,283.33
299 All Other Employee Benefits			32,165.82
Total Personnel Services – Employee Benefits			\$3,431,497.88
300 <u>Purchased Professional and Technical Services</u>			
330 Other Professional Services			52,309.00
Total Purchased Professional and Technical Services			\$52,309.00
800 <u>Other Objects</u>			
810 Dues and Fees			472.64
Total Other Objects			\$472.64
Total 2910 Support Services Not Listed Elsewhere In the 2000 Series			\$3,484,279.52

	<u>Food Service(51)</u>	<u>Child Care Operations(52)</u>	<u>Other Enterprise(58)</u>	<u>Internal Service(60)</u>	<u>Total</u>
2000 Support Services					
2800 Support Services - Central	1,697.00				1,697.00
2900 Other Support Services				3,484,279.52	3,484,279.52
Total Support Services	\$1,697.00			\$3,484,279.52	\$3,485,976.52
3000 Operation of Non-Instructional Services					
3100 Food Services	1,247,189.86				1,247,189.86
Total Operation of Non-Instructional Services	\$1,247,189.86				\$1,247,189.86
TOTAL ACTUAL EXPENDITURES & OTHER FINANCING USES	\$1,248,886.86			\$3,484,279.52	\$4,733,166.38