

LEA Name : Eastern Lancaster County SD  
Address : 669 E Main St  
New Holland , PA 17557

County : Lancaster  
AUN Number : 113362303  
LEA Type : SD

## Annual Financial Report Accuracy Certification Statement

For Fiscal Year Ending  
6/30/2020

Pennsylvania Department of Education  
&  
Office of Comptroller Operations


PDE-2056: Intermediate Unit

PDE-2057: School District, AVTS/CTC, Charter School,  
and Special Program Jointure

**CERTIFICATION: By signing this page I agree that the electronic data submitted is a complete and accurate statement of the financial operations and status of the local education agency for the fiscal year. It has been prepared in accordance with generally accepted accounting principles and established Commonwealth of PA reporting guidelines.**

  
\_\_\_\_\_  
Chief School Administrator Signature

10/21/20  
\_\_\_\_\_  
Date

  
\_\_\_\_\_  
Board Secretary Signature

10/21/20  
\_\_\_\_\_  
Date

Keith D Ramsey  
\_\_\_\_\_  
Contact Person

keith\_ramsey@elanco.org  
\_\_\_\_\_  
Contact Person E-mail Address

(717)354-1507      Ext :  
\_\_\_\_\_  
Contact Person Telephone Number

(717)351-1408  
\_\_\_\_\_  
Contact Person Fax Number

**Audit Certification**  
**Annual Financial Report:**  
For Fiscal Year Ending **6/30/2020**  
(Pursuant to PA School Code Section 218(b))

LEA Name : Eastern Lancaster County SD  
AUN Number : 113362303  
County : Lancaster

<b>Audit Certification Due:</b> 12/31/2020
---

This certification is applicable to the Annual Financial Report data submitted through the Consolidated Financial Reporting System on: 10/21/2020  
Date

Auditing Firm: BBD, LLP

CERTIFICATION: By signing this page I agree that the financial statements of the school have been properly audited as noted above pursuant to Article XXIV, and in the auditor's professional opinion, the Annual Financial Report (PDE-2057) submitted on the date referenced is materially consistent with the audited financial statements.

Chief School Administrator

Keith D Ramsey  
Signature

10/21/20  
Date

Board Secretary

[Signature]  
Signature

10/21/20  
Date

Keith D Ramsey

Contact Person

keith\_ramsey@elanco.org

Contact Person E-mail Address

(717)354-1507

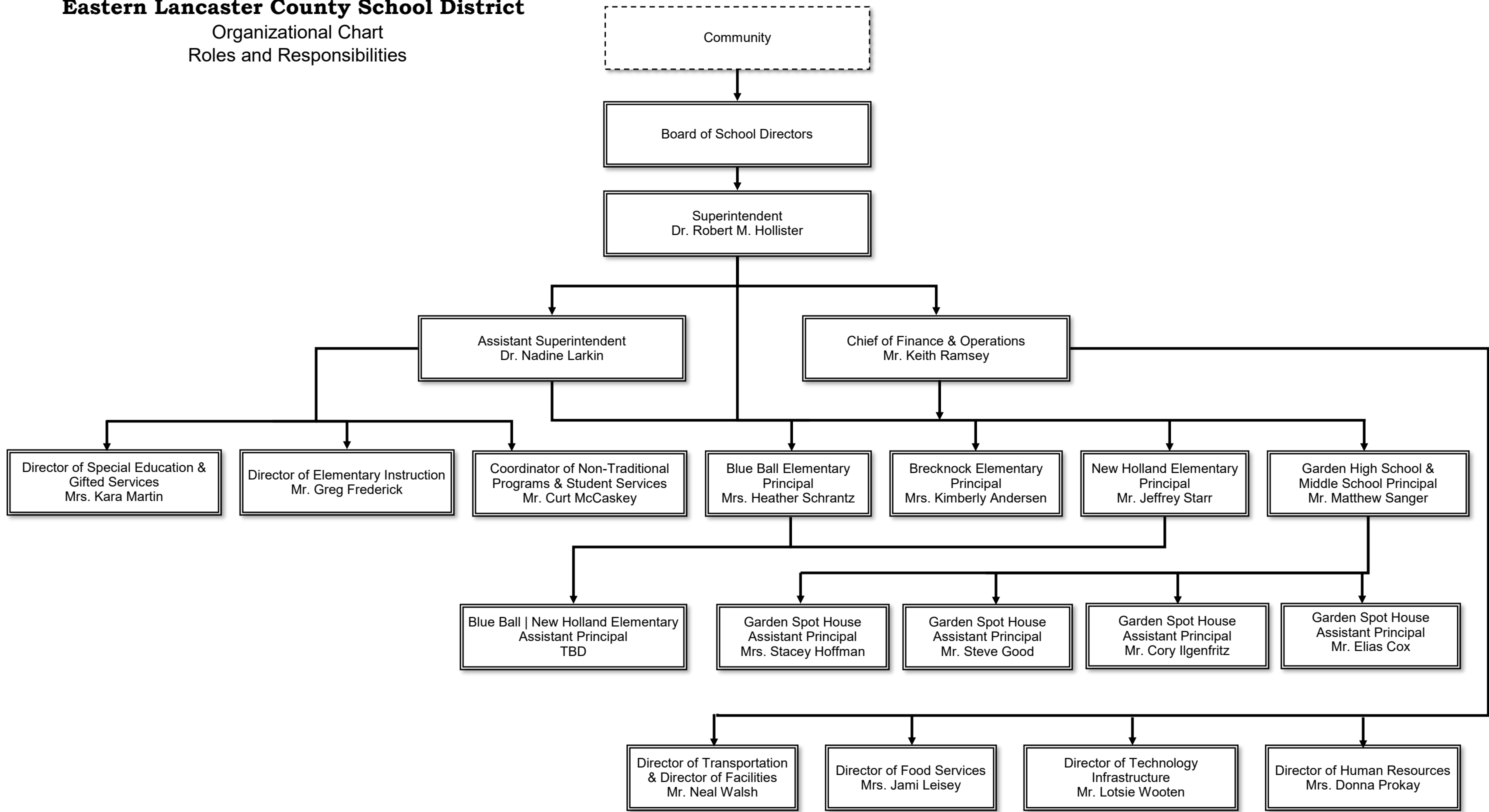
Ext :

Contact Person Telephone Number

(717)351-1408

Contact Person Fax Number

**Eastern Lancaster County School District**  
Organizational Chart  
Roles and Responsibilities





Eastern Lancaster County  
School District

Book	Policy Manual
Section	600 Finances
Title	GASB Statement 34
Code	622
Status	Active
Adopted	September 17, 2012

### **Purpose**

The Board recognizes the need to implement the required accounting and financial reporting standards stipulated by the Pennsylvania Department of Education.

The primary objectives of implementing the Governmental Accounting Standards Board (GASB) Statement 34 are to assure compliance with state requirements, and properly account for both the financial and economic resources of the district.

### **Authority**

Participation of the school district in any such activity shall be in accordance with Board policy.[\[1\]](#)[\[2\]](#)

### **Delegation of Responsibility**

The responsibility to coordinate the compilation and preparation of all information necessary to implement this policy is delegated to the Superintendent or designee.

The designated individual shall be responsible for implementing the necessary procedures to establish and maintain a fixed asset inventory, including depreciation schedules. Depreciation shall be computed on a straight-line basis over the useful lives of the assets, using an averaging convention. Normal maintenance and repairs shall be charged to expense as incurred; major renewals and betterments that materially extend the life or increase the value of the asset shall be capitalized. A schedule of accumulated depreciation shall be consistent from year to year. The basis for depreciation, including groups of assets and useful lives, shall be in writing and submitted for review to the Board or Finance Committee.

The Chief of Finance and Operations shall prepare the required Management Discussion and Analysis (MD&A). The MD&A shall be in the form required by GASB Statement 34 and shall be submitted to the Board for approval, prior to publication.

### **Guidelines**

In order to associate debt with acquired assets and to avoid net asset deficits, any asset that has been acquired with debt proceeds shall be capitalized, regardless of the cost of the asset. The asset life of these assets shall be considered relative to the time of the respective debt amortizations.

For all other assets not acquired by debt proceeds, the dollar value of any single item for inclusion in the fixed assets accounts shall be not less than \$4,000.

The capitalization threshold shall be set at a level that will capture at least eighty percent (80%) of all fixed assets.

Assets that fall below the capitalization threshold for GASB 34 reporting purposes may still be significant for insurance, warranty service, and obsolescence/replacement policy tracking purposes. The district may record and maintain these non-GASB 34 asset inventories in subsidiary ledgers.

Legal

1. 24 P.S. 218

2. 24 P.S. 613

Governmental Accounting Standards Board, Statement No. 34

<u>Val Number</u>	<u>Description</u>	<u>Justification</u>
41162	<p>Expenditure Detail, Salaries (Object 100) and Benefits (Object 200 series): Amounts must be entered for both Salaries and Benefits.</p> <p>Please verify following fund and function codes: Fund 10 Function 2390;</p>	<p>The amount reported under object 230 is for the District's share of PSERS on Purchase of Service Payments</p>
42420	<p>Expenditure Detail: Total current year 2700-513 expenditure varies from prior year by 10%. Correct the data or enter a justification.</p> <p>2700-513, AFR Exp Detail: \$2,152,874.68 2700-513, PY AFR Amount: \$2,598,621.71</p>	<p>The reason for the variance is due to the COVID-19 shutdown. The District negotiated (per Act 13) to pay the transportation contractor 37% of the contract during the shutdown.</p>
50450	<p>SESS - 2350 Legal and Accounting Services: SESS Schedule amounts for Special Education vary from prior year by 40% or more. Correct the data or enter a justification.</p> <p>SESS Schedule 2350: \$22,540.64 Prior Year SESS Schedule 2350: \$14,740.47</p>	<p>The reason for the variance is due to increased legal services for special education during 2019-20.</p>

Amounts Expressed in Whole Dollars		<u>General Fund</u> <u>(10)</u>	<u>Student Sponsored</u> <u>Activity Fund</u> <u>(21)</u>	<u>Public Purpose Trust</u> <u>(27)</u>	<u>Other Compt Approved</u> <u>(28)</u>	<u>Athletic / Activity</u> <u>(29)</u>
<b>Assets And Deferred Outflows Of Resources</b>						
<b>Assets</b>						
0100	Cash and Cash Equivalents	14,006,354				
0110	Investments	2,196,530				
0120	Taxes Receivable	1,389,647				
0130	Due From Other Funds					
0141	Due From Other Governments	1,459,044				
0142	State Revenue Receivable	1,688,965				
0143	Federal Revenue Receivable	691,860				
0145	Other Intergovernmental Revenue Receivable					
0146	Due from Primary Government					
0147	Due from Component Unit					
0150	Other Receivables	103,317				
0170	Inventories	2,157				
0180	Prepaid Expenses (Expenditures)					
0190	Other Current Assets					
<b>Total Assets</b>		<b>\$21,537,874</b>				
0910	Deferred Outflows of Resources					
<b>Total Assets And Deferred Outflows Of Resources</b>		<b>\$21,537,874</b>				

Amounts Expressed in Whole Dollars		<u>Capital Reserve (690.</u> <u>1850)</u> <u>(31)</u>	<u>Capital Reserve (1431)</u> <u>(32)</u>	<u>Other Capital Projects</u> <u>Fund</u> <u>(39)</u>	<u>Debt Service</u> <u>(40)</u>	<u>Permanent</u> <u>(90)</u>
<b>Assets And Deferred Outflows Of Resources</b>						
<b>Assets</b>						
0100	Cash and Cash Equivalents		12,612,530			
0110	Investments		12,404			
0120	Taxes Receivable					
0130	Due From Other Funds		1,700,000			
0141	Due From Other Governments					
0142	State Revenue Receivable					
0143	Federal Revenue Receivable					
0145	Other Intergovernmental Revenue Receivable					
0146	Due from Primary Government					
0147	Due from Component Unit					
0150	Other Receivables					
0170	Inventories					
0180	Prepaid Expenses (Expenditures)					
0190	Other Current Assets					
<b>Total Assets</b>			<b>\$14,324,934</b>			
0910	Deferred Outflows of Resources					
<b>Total Assets And Deferred Outflows Of Resources</b>			<b>\$14,324,934</b>			



Amounts Expressed in Whole Dollars		<u>Total Governmental</u>
		<u>Funds</u>
<b>Assets And Deferred Outflows Of Resources</b>		
<b>Assets</b>		
0100 Cash and Cash Equivalents	26,618,884	
0110 Investments	2,208,934	
0120 Taxes Receivable	1,389,647	
0130 Due From Other Funds	1,700,000	
0141 Due From Other Governments	1,459,044	
0142 State Revenue Receivable	1,688,965	
0143 Federal Revenue Receivable	691,860	
0145 Other Intergovernmental Revenue Receivable		
0146 Due from Primary Government		
0147 Due from Component Unit		
0150 Other Receivables	103,317	
0170 Inventories	2,157	
0180 Prepaid Expenses (Expenditures)		
0190 Other Current Assets		
<b>Total Assets</b>	<b>\$35,862,808</b>	
0910 Deferred Outflows of Resources		
<b>Total Assets And Deferred Outflows Of Resources</b>	<b>\$35,862,808</b>	

Amounts Expressed in Whole Dollars	<u>General Fund</u> <u>(10)</u>	<u>Student Sponsored</u> <u>Activity Fund</u> <u>(21)</u>	<u>Public Purpose Trust</u> <u>(27)</u>	<u>Other Compt Approved</u> <u>(28)</u>	<u>Athletic / Activity</u> <u>(29)</u>
<b>Liabilities And Deferred Inflows Of Resources And Fund Balances</b>					
<b>Liabilities</b>					
0400 Due to Other Funds	1,716,495				
0411 Due to Other Governments					
0412 Due to Primary Government					
0413 Due to Component Unit					
0420 Accounts Payable	1,017,276				
0430 Contracts Payable					
0440 Current Portion of Long-Term Debt					
0450 Short-Term Payables					
0461 Accrued Salaries and Benefits	7,525,690				
0462 Payroll Deductions and Withholding	214,464				
0480 Unearned Revenues	36,308				
0490 Other Current Liabilities	9,000				
<b>Total Liabilities</b>	<b>\$10,519,233</b>				
0950 Deferred Inflows of Resources	321,640				
<b>Fund Balances</b>					
0810 Nonspendable Fund Balance					
0820 Restricted Fund Balance					
0830 Committed Fund Balance	5,140,654				
0840 Assigned Fund Balance	1,977,899				
0850 Unassigned Fund Balance	3,578,448				
<b>Total Fund Balances</b>	<b>\$10,697,001</b>				
<b>Total Liabilities, Deferred Inflows Of Resources And Fund Balances</b>	<b>\$21,537,874</b>				

Amounts Expressed in Whole Dollars		<u>Capital Reserve (690.</u> <u>1850)</u> <u>(31)</u>	<u>Capital Reserve (1431)</u> <u>(32)</u>	<u>Other Capital Projects</u> <u>Fund</u> <u>(39)</u>	<u>Debt Service</u> <u>(40)</u>	<u>Permanent</u> <u>(90)</u>
<b>Liabilities And Deferred Inflows Of Resources And Fund Balances</b>						
<b>Liabilities</b>						
0400	Due to Other Funds					
0411	Due to Other Governments					
0412	Due to Primary Government					
0413	Due to Component Unit					
0420	Accounts Payable		1,262,211			
0430	Contracts Payable					
0440	Current Portion of Long-Term Debt					
0450	Short-Term Payables					
0461	Accrued Salaries and Benefits					
0462	Payroll Deductions and Withholding					
0480	Unearned Revenues					
0490	Other Current Liabilities					
<b>Total Liabilities</b>			<b>\$1,262,211</b>			
0950	Deferred Inflows of Resources					
<b>Fund Balances</b>						
0810	Nonspendable Fund Balance					
0820	Restricted Fund Balance		13,062,723			
0830	Committed Fund Balance					
0840	Assigned Fund Balance					
0850	Unassigned Fund Balance					
<b>Total Fund Balances</b>			<b>\$13,062,723</b>			
<b>Total Liabilities, Deferred Inflows Of Resources And Fund Balances</b>			<b>\$14,324,934</b>			

Amounts Expressed in Whole Dollars		<u>Total Governmental</u> <u>Funds</u>
<b>Liabilities And Deferred Inflows Of Resources And Fund Balances</b>		
<b>Liabilities</b>		
0400 Due to Other Funds	1,716,495	
0411 Due to Other Governments		
0412 Due to Primary Government		
0413 Due to Component Unit		
0420 Accounts Payable	2,279,487	
0430 Contracts Payable		
0440 Current Portion of Long-Term Debt		
0450 Short-Term Payables		
0461 Accrued Salaries and Benefits	7,525,690	
0462 Payroll Deductions and Withholding	214,464	
0480 Unearned Revenues	36,308	
0490 Other Current Liabilities	9,000	
<b>Total Liabilities</b>	<b>\$11,781,444</b>	
0950 Deferred Inflows of Resources	321,640	
<b>Fund Balances</b>		
0810 Nonspendable Fund Balance		
0820 Restricted Fund Balance	13,062,723	
0830 Committed Fund Balance	5,140,654	
0840 Assigned Fund Balance	1,977,899	
0850 Unassigned Fund Balance	3,578,448	
<b>Total Fund Balances</b>	<b>\$23,759,724</b>	
<b>Total Liabilities, Deferred Inflows Of Resources And Fund Balances</b>	<b>\$35,862,808</b>	

Amounts Expressed in Whole Dollars	<u>General Fund</u> <u>(10)</u>	<u>Student Sponsored</u> <u>Activity Fund</u> <u>(21)</u>	<u>Public Purpose Trust</u> <u>(27)</u>	<u>Other Compt Approved</u> <u>(28)</u>	<u>Athletic / Activity</u> <u>(29)</u>
<b>Revenues</b>					
6000 Revenue from Local Sources	43,272,750				
7000 Revenue from State Sources	14,527,294				
8000 Revenue from Federal Sources	1,641,055				
<b>Total Revenues</b>	<b>\$59,441,099</b>				
<b>Expenditures</b>					
1000 Instruction	30,051,869				
2000 Support Services	20,021,638				
3000 Operation of Non-Instructional Services	1,131,098				
4000 Facilities Acquisition, Construction and Improvement Services	910,356				
5110 Debt Service	3,600,200				
5130 Refund of Prior Year Revenues / Receipts	14,164				
<b>Total Expenditures</b>	<b>\$55,729,325</b>				
<b>Excess (Deficiency) Of Revenues Over Expenditures</b>	<b>\$3,711,774</b>				
<b>Other Financing Sources (Uses)</b>					
9110 Face Value of Bonds Issued					
9120 Proceeds from Refunding of Bonds					
9130 Bond Premiums					
9200 Proceeds from Extended-Term Financing					
9300 Interfund Transfers - IN					
9400 Sale of or Compensation for Loss of Fixed Assets	4,202				
9710 Transfers from Component Units					
9720 Transfers from Primary Governments					
9910 Other Financing Sources Not Listed in the 9000 Series					
9990 Insurance Recoveries					
5120 Debt Service – Refunded Bonds					
5150 Bond Discounts					
5200 Interfund Transfers – Out	1,708,978				
5300 Transfers Out to Component Units/Primary Governments					
<b>Total Other Financing Sources (Uses)</b>	<b>(\$1,704,776)</b>				

Amounts Expressed in Whole Dollars		<u>Capital Reserve (690.1850)</u> <u>(31)</u>	<u>Capital Reserve (1431)</u> <u>(32)</u>	<u>Other Capital Projects</u> <u>Fund</u> <u>(39)</u>	<u>Debt Service</u> <u>(40)</u>	<u>Permanent</u> <u>(90)</u>
<b>Revenues</b>						
6000	Revenue from Local Sources		148,208			
7000	Revenue from State Sources					
8000	Revenue from Federal Sources					
<b>Total Revenues</b>			<b>\$148,208</b>			
<b>Expenditures</b>						
1000	Instruction					
2000	Support Services					
3000	Operation of Non-Instructional Services					
4000	Facilities Acquisition, Construction and Improvement Services		1,730,540			
5110	Debt Service					
5130	Refund of Prior Year Revenues / Receipts					
<b>Total Expenditures</b>			<b>\$1,730,540</b>			
<b>Excess (Deficiency) Of Revenues Over Expenditures</b>			<b>(\$1,582,332)</b>			
<b>Other Financing Sources (Uses)</b>						
9110	Face Value of Bonds Issued					
9120	Proceeds from Refunding of Bonds					
9130	Bond Premiums					
9200	Proceeds from Extended-Term Financing					
9300	Interfund Transfers - IN		1,696,985			
9400	Sale of or Compensation for Loss of Fixed Assets					
9710	Transfers from Component Units					
9720	Transfers from Primary Governments					
9910	Other Financing Sources Not Listed in the 9000 Series					
9990	Insurance Recoveries					
5120	Debt Service – Refunded Bonds					
5150	Bond Discounts					
5200	Interfund Transfers – Out					
5300	Transfers Out to Component Units/Primary Governments					
<b>Total Other Financing Sources (Uses)</b>			<b>\$1,696,985</b>			

Amounts Expressed in Whole Dollars		<u>Total Governmental Funds</u>
<b>Revenues</b>		
6000	Revenue from Local Sources	43,420,958
7000	Revenue from State Sources	14,527,294
8000	Revenue from Federal Sources	1,641,055
<b>Total Revenues</b>		<b>\$59,589,307</b>
<b>Expenditures</b>		
1000	Instruction	30,051,869
2000	Support Services	20,021,638
3000	Operation of Non-Instructional Services	1,131,098
4000	Facilities Acquisition, Construction and Improvement Services	2,640,896
5110	Debt Service	3,600,200
5130	Refund of Prior Year Revenues / Receipts	14,164
<b>Total Expenditures</b>		<b>\$57,459,865</b>
<b>Excess (Deficiency) Of Revenues Over Expenditures</b>		<b>\$2,129,442</b>
<b>Other Financing Sources (Uses)</b>		
9110	Face Value of Bonds Issued	
9120	Proceeds from Refunding of Bonds	
9130	Bond Premiums	
9200	Proceeds from Extended-Term Financing	
9300	Interfund Transfers - IN	1,696,985
9400	Sale of or Compensation for Loss of Fixed Assets	4,202
9710	Transfers from Component Units	
9720	Transfers from Primary Governments	
9910	Other Financing Sources Not Listed in the 9000 Series	
9990	Insurance Recoveries	
5120	Debt Service – Refunded Bonds	
5150	Bond Discounts	
5200	Interfund Transfers – Out	1,708,978
5300	Transfers Out to Component Units/Primary Governments	
<b>Total Other Financing Sources (Uses)</b>		<b>(\$7,791)</b>

Amounts Expressed in Whole Dollars		<u>General Fund</u> <u>(10)</u>	<u>Student Sponsored</u> <u>Activity Fund</u> <u>(21)</u>	<u>Public Purpose Trust</u> <u>(27)</u>	<u>Other Compt Approved</u> <u>(28)</u>	<u>Athletic / Activity</u> <u>(29)</u>
<b>Special And Extraordinary Items</b>						
9920	Special Items – Gains					
9930	Extraordinary Items – Gains					
5520	Special Items – Losses					
5530	Extraordinary Items – Losses					
<b>Net Change In Fund Balances</b>		<b>\$2,006,998</b>				
<b>Fund Balance</b>						
0001	Fund Balance - Beginning of Fiscal Year	8,690,003				
<b>Fund Balance - End Of Year</b>		<b>\$10,697,001</b>				



Amounts Expressed in Whole Dollars		<u>Capital Reserve (690.</u> <u>1850)</u> <u>(31)</u>	<u>Capital Reserve (1431)</u> <u>(32)</u>	<u>Other Capital Projects</u> <u>Fund</u> <u>(39)</u>	<u>Debt Service</u> <u>(40)</u>	<u>Permanent</u> <u>(90)</u>
<b>Special And Extraordinary Items</b>						
9920	Special Items – Gains					
9930	Extraordinary Items – Gains					
5520	Special Items – Losses					
5530	Extraordinary Items – Losses					
<b>Net Change In Fund Balances</b>			<b>\$114,653</b>			
<b>Fund Balance</b>						
0001	Fund Balance - Beginning of Fiscal Year		12,948,070			
<b>Fund Balance - End Of Year</b>			<b>\$13,062,723</b>			

Amounts Expressed in Whole Dollars		<u>Total Governmental</u> <u>Funds</u>
<b>Special And Extraordinary Items</b>		
9920	Special Items – Gains	
9930	Extraordinary Items – Gains	
5520	Special Items – Losses	
5530	Extraordinary Items – Losses	
<b>Net Change In Fund Balances</b>		<b>\$2,121,651</b>
<b>Fund Balance</b>		
0001	Fund Balance - Beginning of Fiscal Year	21,638,073
<b>Fund Balance - End Of Year</b>		<b>\$23,759,724</b>

Amounts Expressed in Whole Dollars	<u>Food Service</u> <u>(51)</u>	<u>Child Care</u> <u>Operations</u> <u>(52)</u>	<u>Other Enterprise</u> <u>(58)</u>	<u>TOTAL</u>	<u>Internal Service</u> <u>(60)</u>
<b>Assets And Deferred Outflows Of Resources</b>					
<b>Current Assets</b>					
0100 Cash and Cash Equivalents	1,061,737			1,061,737	8,972,010
0110 Investments					
0130 Due From Other Funds	16,495			16,495	
0141 Due From Other Governments					
0142 State Revenue Receivable	2,475			2,475	
0143 Federal Revenue Receivable	58,566			58,566	
0146 Due from Primary Government					
0147 Due from Component Unit					
0150 Other Receivables	227			227	40,647
0170 Inventories	30,839			30,839	
0180 Prepaid Expenses (Expenditures)					
0190 Other Current Assets					
<b>Total Current Assets</b>	<b>\$1,170,339</b>			<b>\$1,170,339</b>	<b>\$9,012,657</b>
<b>Noncurrent Assets</b>					
0211 Land					
0212 Site Improvements (Net)					
0220 Buildings and Building Improvements (Net)					
0230 Machinery, Equipment and Furniture (Net)	154,394			154,394	
0250 Construction in Progress					
0260 Long Term Prepayments					
0290 Other Noncurrent Assets					
<b>Total Noncurrent Assets</b>	<b>\$154,394</b>			<b>\$154,394</b>	
0910 Deferred Outflows of Resources	89,948			89,948	
<b>Total Assets And Deferred Outflows Of Resources</b>	<b>\$1,414,681</b>			<b>\$1,414,681</b>	<b>\$9,012,657</b>

Amounts Expressed in Whole Dollars	Food Service (51)	Child Care Operations (52)	Other Enterprise (58)	TOTAL	Internal Service (60)
<b>Liabilities And Deferred Inflows Of Resources And Net Position</b>					
<b>Current Liabilities</b>					
0400 Due to Other Funds					
0411 Due to Other Governments					
0413 Due to Component Unit					
0420 Accounts Payable	1,395			1,395	20,466
0430 Contracts Payable					
0440 Current Portion of Long-Term Debt					
0450 Short-Term Payables					
0461 Accrued Salaries and Benefits	2,967			2,967	287,603
0462 Payroll Deductions and Withholding					
0480 Unearned Revenues	53,391			53,391	
0490 Other Current Liabilities					
<b>Total Current Liabilities</b>	<b>\$57,753</b>			<b>\$57,753</b>	<b>\$308,069</b>
<b>Noncurrent Liabilities</b>					
0510 Bonds Payable					
0520 Extended-Term Financing Agreements Payable					
0530 Lease-Purchase Obligations					
0540 Accumulated Compensated Absences					
0550 Authority Lease Obligations					
0560 Other Post-Employment Benefits (OPEB)					
0570 Net Pension Liability	624,794			624,794	
0599 Other Noncurrent Liabilities					
<b>Total Noncurrent Liabilities</b>	<b>\$624,794</b>			<b>\$624,794</b>	
<b>Total Liabilities</b>	<b>\$682,547</b>			<b>\$682,547</b>	<b>\$308,069</b>
0950 Deferred Inflows of Resources	22,319			22,319	
<b>Net Position</b>					
0791 Net Investment in Capital Assets	154,394			154,394	
0008 Restricted Net Position (0792 – 0798)					
0799 Unrestricted Net Position	555,421			555,421	8,704,588
<b>Total Net Position</b>	<b>\$709,815</b>			<b>\$709,815</b>	<b>\$8,704,588</b>
<b>Total Liabilities And Deferred Inflows Of Resources And Net Position</b>	<b>\$1,414,681</b>			<b>\$1,414,681</b>	<b>\$9,012,657</b>

Amounts Expressed in Whole Dollars	Food Service (51)	Child Care Operations (52)	Other Enterprise (58)	TOTAL	Internal Service (60)
<b>Operating Revenues</b>					
6600 Food Service Revenue	400,792			400,792	
0071 Charges for Services					3,756,828
0072 Other Operating Revenue					
<b>Total Operating Revenues</b>	<b>\$400,792</b>			<b>\$400,792</b>	<b>\$3,756,828</b>
<b>Operating Expenses</b>					
100 Personnel Services – Salaries	183,249			183,249	
200 Personnel Services – Employee Benefits	188,203			188,203	3,766,421
300 Purchased Professional and Technical Services	1,326			1,326	
400 Purchased Property Services	17,392			17,392	
500 Other Purchased Services	337,285			337,285	
600 Supplies	673,274			673,274	
740 Depreciation	22,086			22,086	
810 Dues and Fees	216			216	167
890 Miscellaneous Expenditures					
<b>Total Operating Expenses</b>	<b>\$1,423,031</b>			<b>\$1,423,031</b>	<b>\$3,766,588</b>
<b>Operating Income (Loss)</b>	<b>(\$1,022,239)</b>			<b>(\$1,022,239)</b>	<b>(\$9,760)</b>
<b>Non Operating Revenues (Expenses)</b>					
6500 Earnings on Investments	11,537			11,537	115,984
6920 Contributions and Donations from Private Sources					
6930 Gains or Losses on Sale of Fixed Assets					
6991 Refunds of a Prior Year Expenditure					
7000 Revenue from State Sources	84,741			84,741	
8000 Revenue from Federal Sources	963,376			963,376	
9990 Insurance Recoveries					
820 Claims and Judgments Against the LEA					
830 Interest					
<b>TOTAL Non Operating Revenues (Expenses)</b>	<b>\$1,059,654</b>			<b>\$1,059,654</b>	<b>\$115,984</b>
<b>Income (Loss) Before Contributions And Transfers</b>	<b>\$37,415</b>			<b>\$37,415</b>	<b>\$106,224</b>

Amounts Expressed in Whole Dollars	<u>Food Service</u> <u>(51)</u>	<u>Child Care Operations</u> <u>(52)</u>	<u>Other Enterprise</u> <u>(58)</u>	<u>TOTAL</u>	<u>Internal Service</u> <u>(60)</u>
<b>Contributions, Transfers, and Special and Extraordinary Items</b>					
5200 Interfund Transfers – Out					
5300 Transfers Out to Component Units/Primary Governments					
5520 Special Items – Losses					
5530 Extraordinary Items – Losses					
9300 Interfund Transfers - IN	11,993			11,993	
9500 Capital Contributions					
9700 Transfers IN From Component Units/Primary Governments					
9920 Special Items – Gains					
9930 Extraordinary Items – Gains					
<b>Change In Net Position</b>	<b>\$49,408</b>			<b>\$49,408</b>	<b>\$106,224</b>
0002 Net Position - Beginning of Fiscal Year	660,407			660,407	8,598,364
0003 Accounting Changes / Residual Equity Transfers					
<b>Net Position - End Of Year</b>	<b>\$709,815</b>			<b>\$709,815</b>	<b>\$8,704,588</b>

LEA : 113362303      Eastern Lancaster County SD

Printed 10/22/2020 7:43:18 AM

Amounts Expressed in Whole Dollars	<u>Food Service</u> <u>(51)</u>	<u>Child Care Operations</u> <u>(52)</u>	<u>Other Enterprise</u> <u>(58)</u>	<u>TOTAL</u>	<u>Internal Service(60)</u>
<b>Cash Flows From Operating Activities</b>					
0011 Cash Receipts From Users	417,057			417,057	
0012 Cash Receipts From Assessments Made to Other Funds					3,859,980
0013 Cash Receipts From Earnings on Investments					
0014 Cash Receipts From Other Operating Revenue					
0015 Cash Payments To Employees For Services	308,952			308,952	
0016 Cash Payments For Insurance Claims					3,650,715
0017 Cash Payments To Suppliers For Goods and Services	933,447			933,447	
0018 Cash Payments For Other Operating Expenses					167
<b>Net Cash Provided By (Used For) Operating Activities</b>	<b>(\$825,342)</b>			<b>(\$825,342)</b>	<b>\$209,098</b>
<b>Cash Flows From Non-Capital Financing Activities</b>					
0021 Receipts From Local Sources - 6000					
0022 Receipts From State Sources - 7000	82,266			82,266	
0023 Receipts From Federal Sources -8000	798,592			798,592	
0024 Notes and Loans Received (Repaid)					
0025 Interest Paid on Notes/Loans - 5100-830					
0026 Operating Transfers In (Out)/Residual Equity Trans	11,993			11,993	
0027 Operating Transfers In (Out) Primary Government / Comp Unit					
0028 Receipts From Refund of Prior Year Expenditures - 6991					
0029 Special and Extraordinary Gains (losses)					
0030 Receipts from Insurance Recoveries -9990					
<b>Net Cash Prov By (Used for) Non-Capital Financing Activities</b>	<b>\$892,851</b>			<b>\$892,851</b>	
<b>Cash Flows From Capital and Related Financing Activities</b>					
0031 Payments For Fac Acq, Const, and Imp - 4000	(69,113)			(69,113)	
0032 Gain / (Loss) on Sale of Fixed Assets - 6930					
0033 Proceeds From Extended Term Financing - 9200					
0034 Principal Paid on Financing Agreements					
0035 Interest Paid on Financing Agreements - 5100-830					
0036 (Inc) Dec in Contributed Capital					
<b>Net Cash Prov By (Used for) Capital and Related Financing Activities</b>	<b>(\$69,113)</b>			<b>(\$69,113)</b>	
<b>Cash Flows From Investing Activities</b>					
0041 Earnings on Investments - 6500	11,537			11,537	115,984
0042 Purchase of Inv Securities / Deposits to Inv Pools					
0043 Receipts From Investment Pool Withdrawals					
0044 Proceeds from Sale and Maturity of Inv Securities					

LEA : 113362303      Eastern Lancaster County SD

Printed 10/22/2020 7:43:18 AM

0045 Loans Received (Paid)				
Net Cash Prov By (Used for) Investing Activities	\$11,537		\$11,537	\$115,984



LEA : 113362303      Eastern Lancaster County SD

Printed 10/22/2020 7:43:18 AM

	Food Service (51)	Child Care Operations (52)	Other Enterprise (58)	TOTAL	Internal Service (60)
Net Increase (Decrease) in Cash Flows	9,933			9,933	325,082
0004 Cash and Cash Equivalents Beginning of Year	1,051,804			1,051,804	8,646,927
Cash and Cash Equivalents at Year End	\$1,061,737			\$1,061,737	\$8,972,009
Reconciliation of Operating Income (Loss) To Net Cash Provided by (Used For) Operating Activities					
0005 Operating Income (Loss) per REP	(1,022,239)			(1,022,239)	(9,760)
Adjustments					
0051 Depreciation and Net Amortization	22,088			22,088	
0052 Provision for Uncollectible Accounts					
0053 Other Adjustments	106,218			106,218	
Effect of Changes in Assets, Liabilities, Deferred Outflows and Deferred Inflows					
0054 (Inc) Dec In Accounts Receivable (0120-0150)	(4,057)			(4,057)	103,152
0055 Advances to Other Funds (0160)					
0056 (Inc) Dec in Inventories (0170)	(6,932)			(6,932)	
0057 (Inc) Dec in Prepaid Expenses (0180)					
0058 (Inc) Dec in Other Current or Noncurrent Assets					
0064 Deferred Outflows (0910)	1,366			1,366	
0059 Inc (Dec) in Accounts Payable (0400-0450)	1,299			1,299	14,935
0060 Inc (Dec) in Accrued Salaries/Benefits (0461)	1,398			1,398	100,771
0065 Inc (Dec) in Net Pension Liabilities (0570)	47,480			47,480	
0066 Inc (Dec) in Other Postemp Benefit Oblig (0560)					
0061 Inc (Dec) in Payroll Deductions/Withholding (0462)					
0062 Inc (Dec) in Unearned Revenue (0480)	15,783			15,783	
0063 Inc (Dec) in Other Current or Noncurrent Liabilities					
0067 Deferred Inflows (0950)	12,254			12,254	
Total Adjustments	\$196,897			\$196,897	\$218,858
Cash Provided By (Used for) Total	(\$825,342)			(\$825,342)	\$209,098

COMBINED STATEMENT OF CASH FLOWS  
SCHEDULE OF NONCASH INVESTING, CAPITAL, AND FINANCING ACTIVITIES

Explanation of Transaction and Balance Sheet Effect	Amount
USDA Donated Commodities	106,218
<b>Total</b>	<b>\$106,218</b>

LEA : 113362303 Eastern Lancaster County SD

Printed 10/22/2020 7:43:21 AM

Amounts Expressed in Whole Dollars		<u>Private Purpose Trust</u> <u>(71)</u>	<u>Investment Trust</u> <u>(72)</u>	<u>Pension Trust</u> <u>(73)</u>	<u>Student Activity Custodial</u> <u>(81)</u>
<b>Assets And Deferred Outflows Of Resources</b>					
<b>Assets</b>					
0100	Cash and Cash Equivalents	77,392			59,877
0110	Investments				
0130	Due From Other Funds				
0140	Due from Other Governments, Primary Government and Component Units				
0150	Other Receivables				2,274
0170	Inventories				
0180	Prepaid Expenses (Expenditures)				
0190	Other Current Assets				
0220	Buildings and Building Improvements (Net)				
0230	Machinery, Equipment and Furniture (Net)				
<b>Total Assets</b>		<b>\$77,392</b>			<b>\$62,151</b>
0910	Deferred Outflows of Resources				
<b>Total Assets And Deferred Outflows Of Resources</b>		<b>\$77,392</b>			<b>\$62,151</b>

LEA : 113362303     Eastern Lancaster County SD

Printed 10/22/2020 7:43:21 AM

Amounts Expressed in Whole Dollars		<u>Other Custodial</u> <u>(89)</u>	<u>Fiduciary Component Units</u> <u>(98)</u>	<u>Total Fiduciary Funds</u>
<b>Assets And Deferred Outflows Of Resources</b>				
<b>Assets</b>				
0100	Cash and Cash Equivalents			137,269
0110	Investments			
0130	Due From Other Funds			
0140	Due from Other Governments, Primary Government and Component Units			
0150	Other Receivables			2,274
0170	Inventories			
0180	Prepaid Expenses (Expenditures)			
0190	Other Current Assets			
0220	Buildings and Building Improvements (Net)			
0230	Machinery, Equipment and Furniture (Net)			
<b>Total Assets</b>				<b>\$139,543</b>
0910	Deferred Outflows of Resources			
<b>Total Assets And Deferred Outflows Of Resources</b>				<b>\$139,543</b>

LEA : 113362303 Eastern Lancaster County SD

Printed 10/22/2020 7:43:21 AM

Amounts Expressed in Whole Dollars	<u>Private Purpose Trust</u> <u>(71)</u>	<u>Investment Trust</u> <u>(72)</u>	<u>Pension Trust</u> <u>(73)</u>	<u>Student Activity Custodial</u> <u>(81)</u>
<b>Liabilities, Deferred Inflows Of Resources And Net Position</b>				
<b>Liabilities</b>				
0400 Due to Other Funds				
0410 Due to Other Governments, Primary Government and Component Units				
0420 Accounts Payable				1,042
0430 Contracts Payable				
0450 Short-Term Payables				
0460 Payroll Accruals and Withholdings				
0480 Unearned Revenues				
0490 Other Current Liabilities				61,109
<b>Total Liabilities</b>				<b>\$62,151</b>
0950 Deferred Inflows of Resources				
<b>Net Position</b>				
0791 Net Investment in Capital Assets				
0009 Restricted Net Position (0792 – 0798)	77,392			
0799 Unrestricted Net Position				
<b>Total Net Position</b>	<b>\$77,392</b>			
<b>Total Liabilities, Deferred Inflows Of Resources And Net Position</b>	<b>\$77,392</b>			<b>\$62,151</b>

LEA : 113362303 Eastern Lancaster County SD

Printed 10/22/2020 7:43:21 AM

Amounts Expressed in Whole Dollars	<u>Other Custodial</u> <u>(89)</u>	<u>Fiduciary Component Units</u> <u>(98)</u>	<u>Total Fiduciary Funds</u>
<b>Liabilities, Deferred Inflows Of Resources And Net Position</b>			
<b>Liabilities</b>			
0400 Due to Other Funds			
0410 Due to Other Governments, Primary Government and Component Units			
0420 Accounts Payable			1,042
0430 Contracts Payable			
0450 Short-Term Payables			
0460 Payroll Accruals and Withholdings			
0480 Unearned Revenues			
0490 Other Current Liabilities			61,109
<b>Total Liabilities</b>			<b>\$62,151</b>
0950 Deferred Inflows of Resources			
<b>Net Position</b>			
0791 Net Investment in Capital Assets			
0009 Restricted Net Position (0792 – 0798)			77,392
0799 Unrestricted Net Position			
<b>Total Net Position</b>			<b>\$77,392</b>
<b>Total Liabilities, Deferred Inflows Of Resources And Net Position</b>			<b>\$139,543</b>

Amounts Expressed in Whole Dollars	<u>Private Purpose Trust</u> <u>(71)</u>	<u>Investment Trust</u> <u>(72)</u>	<u>Pension Trust</u> <u>(73)</u>	<u>Student Activity</u> <u>Custodial</u> <u>(81)</u>	<u>Other Custodial</u> <u>(89)</u>	<u>Fiduciary Component</u> <u>Units</u> <u>(98)</u>
<b>Additions</b>						
0091 Gifts and Contributions						
0095 Net Investment Earnings	945					
0092 Other Additions						
<b>Deductions</b>						
0093 Scholarships Awarded	2,205					
0094 Other Deductions						
<b>Change In Net Position</b>	<b>(\$1,260)</b>					
0006 Net Position – Beginning of Fiscal Year	78,652					
0007 Net Position Held in Trust for Pension Benefits						
<b>Net Position - End of Fiscal Year</b>	<b>\$77,392</b>					

Amounts Expressed in Whole Dollars		<u>Total Fiduciary</u>
		<u>Funds</u>
<b>Additions</b>		
0091	Gifts and Contributions	
0095	Net Investment Earnings	945
0092	Other Additions	
<b>Deductions</b>		
0093	Scholarships Awarded	2,205
0094	Other Deductions	
<b>Change In Net Position</b>		<b>(\$1,260)</b>
0006	Net Position – Beginning of Fiscal Year	78,652
0007	Net Position Held in Trust for Pension Benefits	
<b>Net Position - End of Fiscal Year</b>		<b>\$77,392</b>



	Revenue Reported In Current Year	Current Year Tax Accrual	Prior Year Tax Accrual	Taxes Collected In Current Year
<b>Revenue from Local Sources</b>				
6111 Current Real Estate Taxes	33,237,177.57			33,237,177.57
6112 Interim Real Estate Taxes	242,504.30	23,319.39	3,503.33	222,688.24
6113 Public Utility Realty Taxes	33,660.11			33,660.11
6114 Payments in Lieu of Current Taxes - State / Local	191,502.87			191,502.87
6143 Current Act 511 Local Services Taxes	162,556.29	34,223.11	38,030.56	166,363.74
6151 Current Act 511 Earned Income Taxes	4,014,701.16	813,970.06	707,705.55	3,908,436.65
6153 Current Act 511 Real Estate Transfer Taxes	737,519.30	55,931.91	64,945.73	746,533.12
6411 Delinquent Real Estate Taxes	605,982.37	140,562.68	130,961.89	596,381.58
6500 Earnings on Investments	369,100.33			
6700 Revenues from LEA Activities	98,929.73			
6831 Federal Revenue Received from Other Pennsylvania Public LEAs	3,015.77			
6832 Federal IDEA Revenue Received as Pass Through	541,748.00			
6839 Federal Revenue Received from Other Sources	19,029.76			
6910 Rentals	42,382.35			
6920 Contributions and Donations from Private Sources	12,290.82			
6942 Summer School Tuition	8,191.00			
6944 Receipts from Other LEAs in Pennsylvania - Education	2,551,818.48			
6961 Transportation Services Provided Other Pennsylvania LEAs	18,051.29			
6962 Other Services Provided Other Pennsylvania LEAs	297,051.72			
6991 Refunds of a Prior Year Expenditure	14,483.26			
6999 Other Revenues Not Specified Above	71,053.31			
<b>TOTAL Revenue from Local Sources</b>	<b>\$43,272,749.79</b>	<b>\$1,068,007.15</b>	<b>\$945,147.06</b>	<b>\$39,102,743.88</b>

	Revenue Reported In Current Year			
<b>Revenue from State Sources</b>				
7111 Basic Education Funding-Formula	4,737,293.57			
7112 Basic Education Funding-Social Security	787,891.60			
7160 Tuition for Orphans Subsidy	86,681.42			
7220 Vocational Education	95,225.61			
7271 Special Education funds for School-Aged Pupils	1,687,496.43			
7311 Pupil Transportation Subsidy	1,264,568.30			
7312 Nonpublic and Charter School Pupil Transportation Subsidy	204,050.00			
7320 Rental and Sinking Fund Payments / Building Reimbursement Subsidy	1,099,698.44			
7330 Health Services (Medical, Dental, Nurse, Act 25)	79,414.76			
7340 State Property Tax Reduction Allocation	447,168.83			
7505 Ready to Learn Block Grant	247,418.00			
7820 State Share of Retirement Contributions	3,790,386.67			
<b>TOTAL Revenue from State Sources</b>	<b>\$14,527,293.63</b>			

	Revenue Reported In Current Year			
<b><u>Revenue from Federal Sources</u></b>				
8514 NCLB, Title I - Improving the Academic Achievement of the Disadvantaged	828,734.48			
8515 NCLB, Title II - Preparing, Training and Recruiting High Quality Teachers and Principals	163,804.07			
8516 NCLB, Title III - Language Instruction for Limited English Proficient and Immigrant Students	12,114.00			
8517 NCLB, Title IV - 21St Century Schools	62,771.18			
8749 Other CARES Act Funding	58,684.24			
8810 School-Based Access Medicaid Reimbursement Program (SBAP) Reimbursements (Access)	495,983.44			
8820 Medical Assistance Reimbursement for Administrative Claiming (Quarterly) Program	18,963.45			
<b>TOTAL Revenue from Federal Sources</b>	<b>\$1,641,054.86</b>			

	Revenue Reported In Current Year			
<b><u>Other Financing Sources</u></b>				
9400 Sale of or Compensation for Loss of Fixed Assets	4,202.18			
<b>TOTAL Other Financing Sources</b>	<b>\$4,202.18</b>			
<b>TOTAL FROM ALL SOURCES</b>	<b>\$59,445,300.46</b>	<b>\$1,068,007.15</b>	<b>\$945,147.06</b>	<b>\$39,102,743.88</b>

LEA : 113362303     Eastern Lancaster County SD

Printed 10/22/2020 7:43:30 AM

	<u>General Fund (10)</u>	<u>Student Sponsored Activity Fund (21)</u>	<u>Public Purpose Trust (27)</u>	<u>Other Compt Approved (28)</u>	<u>Athletic / Activity (29)</u>	<u>Capital Reserve (690, 1850) (31)</u>
<b>6000 Revenue from Local Sources</b>						
6111 Current Real Estate Taxes	33,237,177.57					
6112 Interim Real Estate Taxes	242,504.30					
6113 Public Utility Realty Taxes	33,660.11					
6114 Payments in Lieu of Current Taxes - State / Local	191,502.87					
6143 Current Act 511 Local Services Taxes	162,556.29					
6151 Current Act 511 Earned Income Taxes	4,014,701.16					
6153 Current Act 511 Real Estate Transfer Taxes	737,519.30					
6411 Delinquent Real Estate Taxes	605,982.37					
6500 Earnings on Investments	369,100.33					
6700 Revenues from LEA Activities	98,929.73					
6831 Federal Revenue Received from Other Pennsylvania Public LEAs	3,015.77					
6832 Federal IDEA Revenue Received as Pass Through	541,748.00					
6839 Federal Revenue Received from Other Sources	19,029.76					
6910 Rentals	42,382.35					
6920 Contributions and Donations from Private Sources	12,290.82					
6942 Summer School Tuition	8,191.00					
6944 Receipts from Other LEAs in Pennsylvania - Education	2,551,818.48					
6961 Transportation Services Provided Other Pennsylvania LEAs	18,051.29					
6962 Other Services Provided Other Pennsylvania LEAs	297,051.72					
6991 Refunds of a Prior Year Expenditure	14,483.26					
6999 Other Revenues Not Specified Above	71,053.31					
<b>6000 Total Revenue from Local Sources</b>	<b>\$43,272,749.79</b>					
<b>7000 Revenue from State Sources</b>						
7111 Basic Education Funding-Formula	4,737,293.57					
7112 Basic Education Funding-Social Security	787,891.60					
7160 Tuition for Orphans Subsidy	86,681.42					
7220 Vocational Education	95,225.61					
7271 Special Education funds for School-Aged Pupils	1,687,496.43					
7311 Pupil Transportation Subsidy	1,264,568.30					
7312 Nonpublic and Charter School Pupil Transportation Subsidy	204,050.00					
7320 Rental and Sinking Fund Payments / Building Reimbursement Subsidy	1,099,698.44					
7330 Health Services (Medical, Dental, Nurse, Act 25)	79,414.76					
7340 State Property Tax Reduction Allocation	447,168.83					
7505 Ready to Learn Block Grant	247,418.00					

LEA : 113362303     Eastern Lancaster County SD

Printed 10/22/2020 7:43:30 AM

	Capital Reserve (1431) (32)	Other Capital Projects Fund (39)	Debt Service (40)	Permanent (90)	Total
<b>6000 Revenue from Local Sources</b>					
6111 Current Real Estate Taxes					33,237,177.57
6112 Interim Real Estate Taxes					242,504.30
6113 Public Utility Realty Taxes					33,660.11
6114 Payments in Lieu of Current Taxes - State / Local					191,502.87
6143 Current Act 511 Local Services Taxes					162,556.29
6151 Current Act 511 Earned Income Taxes					4,014,701.16
6153 Current Act 511 Real Estate Transfer Taxes					737,519.30
6411 Delinquent Real Estate Taxes					605,982.37
6500 Earnings on Investments	148,208.01				517,308.34
6700 Revenues from LEA Activities					98,929.73
6831 Federal Revenue Received from Other Pennsylvania Public LEAs					3,015.77
6832 Federal IDEA Revenue Received as Pass Through					541,748.00
6839 Federal Revenue Received from Other Sources					19,029.76
6910 Rentals					42,382.35
6920 Contributions and Donations from Private Sources					12,290.82
6942 Summer School Tuition					8,191.00
6944 Receipts from Other LEAs in Pennsylvania - Education					2,551,818.48
6961 Transportation Services Provided Other Pennsylvania LEAs					18,051.29
6962 Other Services Provided Other Pennsylvania LEAs					297,051.72
6991 Refunds of a Prior Year Expenditure					14,483.26
6999 Other Revenues Not Specified Above					71,053.31
<b>6000 Total Revenue from Local Sources</b>	<b>\$148,208.01</b>				<b>\$43,420,957.80</b>
<b>7000 Revenue from State Sources</b>					
7111 Basic Education Funding-Formula					4,737,293.57
7112 Basic Education Funding-Social Security					787,891.60
7160 Tuition for Orphans Subsidy					86,681.42
7220 Vocational Education					95,225.61
7271 Special Education funds for School-Aged Pupils					1,687,496.43
7311 Pupil Transportation Subsidy					1,264,568.30
7312 Nonpublic and Charter School Pupil Transportation Subsidy					204,050.00
7320 Rental and Sinking Fund Payments / Building Reimbursement Subsidy					1,099,698.44
7330 Health Services (Medical, Dental, Nurse, Act 25)					79,414.76
7340 State Property Tax Reduction Allocation					447,168.83
7505 Ready to Learn Block Grant					247,418.00

LEA : 113362303 Eastern Lancaster County SD

Printed 10/22/2020 7:43:30 AM

	<u>General Fund (10)</u>	<u>Student Sponsored</u> <u>Activity Fund (21)</u>	<u>Public Purpose</u> <u>Trust (27)</u>	<u>Other Compt</u> <u>Approved (28)</u>	<u>Athletic / Activity</u> <u>(29)</u>	<u>Capital Reserve</u> <u>(690, 1850) (31)</u>
<b>7000 Revenue from State Sources</b>						
7820 State Share of Retirement Contributions	3,790,386.67					
<b>7000 Total Revenue from State Sources</b>	<b>\$14,527,293.63</b>					
<b>8000 Revenue from Federal Sources</b>						
8514 NCLB, Title I - Improving the Academic Achievement of the Disadvantaged	828,734.48					
8515 NCLB, Title II - Preparing, Training and Recruiting High Quality Teachers and Principals	163,804.07					
8516 NCLB, Title III - Language Instruction for Limited English Proficient and Immigrant Students	12,114.00					
8517 NCLB, Title IV - 21st Century Schools	62,771.18					
8749 Other CARES Act Funding	58,684.24					
8810 School-Based Access Medicaid Reimbursement Program (SBAP) Reimbursements (Access)	495,983.44					
8820 Medical Assistance Reimbursement for Administrative Claiming (Quarterly) Program	18,963.45					
<b>8000 Total Revenue from Federal Sources</b>	<b>\$1,641,054.86</b>					
<b>9000 Other Financing Sources</b>						
9310 General Fund Transfers						
9400 Sale of or Compensation for Loss of Fixed Assets	4,202.18					
<b>9000 Total Other Financing Sources</b>	<b>\$4,202.18</b>					
<b>Total From All Sources</b>	<b>\$59,445,300.46</b>					

LEA : 113362303 Eastern Lancaster County SD

Printed 10/22/2020 7:43:30 AM

	<u>Capital Reserve</u> <u>(1431) (32)</u>	<u>Other Capital</u> <u>Projects Fund (39)</u>	<u>Debt Service (40)</u>	<u>Permanent (90)</u>	<u>Total</u>
<b>7000 Revenue from State Sources</b>					
7820 State Share of Retirement Contributions					3,790,386.67
<b>7000 Total Revenue from State Sources</b>					<b>\$14,527,293.63</b>
<b>8000 Revenue from Federal Sources</b>					
8514 NCLB, Title I - Improving the Academic Achievement of the Disadvantaged					828,734.48
8515 NCLB, Title II - Preparing, Training and Recruiting High Quality Teachers and Principals					163,804.07
8516 NCLB, Title III - Language Instruction for Limited English Proficient and Immigrant Students					12,114.00
8517 NCLB, Title IV - 21st Century Schools					62,771.18
8749 Other CARES Act Funding					58,684.24
8810 School-Based Access Medicaid Reimbursement Program (SBAP) Reimbursements (Access)					495,983.44
8820 Medical Assistance Reimbursement for Administrative Claiming (Quarterly) Program					18,963.45
<b>8000 Total Revenue from Federal Sources</b>					<b>\$1,641,054.86</b>
<b>9000 Other Financing Sources</b>					
9310 General Fund Transfers	1,696,985.44				1,696,985.44
9400 Sale of or Compensation for Loss of Fixed Assets					4,202.18
<b>9000 Total Other Financing Sources</b>	<b>\$1,696,985.44</b>				<b>\$1,701,187.62</b>
<b>Total From All Sources</b>	<b>\$1,845,193.45</b>				<b>\$61,290,493.91</b>



LEA : 113362303 Eastern Lancaster County SD

Printed 10/22/2020 7:43:34 AM

	<u>General Fund (10)</u>	<u>Student Sponsored Activity Fund (21)</u>	<u>Public Purpose Trust (27)</u>	<u>Other Compt Approved (28)</u>	<u>Athletic / Activity (29)</u>	<u>Capital Reserve (690. 1850) (31)</u>
Revenue from Local Sources	43,272,749.79					
Revenue from State Sources	14,527,293.63					
Revenue from Federal Sources	1,641,054.86					
Other Financing Sources	4,202.18					
Total From All Sources	\$59,445,300.46					

LEA : 113362303 Eastern Lancaster County SD

Printed 10/22/2020 7:43:34 AM

	<u>Capital Reserve (1431)</u> <u>(32)</u>	<u>Other Capital Projects</u> <u>Fund (39)</u>	<u>Debt Service (40)</u>	<u>Permanent (90)</u>	<u>Total</u>
Revenue from Local Sources	148,208.01				43,420,957.80
Revenue from State Sources					14,527,293.63
Revenue from Federal Sources					1,641,054.86
Other Financing Sources	1,696,985.44				1,701,187.62
Total From All Sources	\$1,845,193.45				\$61,290,493.91

LEA : 113362303      Eastern Lancaster County SD

Printed 10/22/2020 7:43:40 AM

General Fund (10)

1000 Instruction		Total
100	<u>Personnel Services – Salaries</u>	
100	Personnel Services – Salaries	14,641,990.52
Total Personnel Services – Salaries		\$14,641,990.52
200	<u>Personnel Services – Employee Benefits</u>	
210	Group Insurance – Contracted Provider	48,327.41
220	Social Security Contributions	1,089,182.65
230	PSERS Retirement Contributions	5,008,401.77
260	Workers' Compensation	63,913.09
270	Group Insurance – Self-Insurance	2,471,349.58
291	Other Retirement Plans	23,055.00
Total Personnel Services – Employee Benefits		\$8,704,229.50
300	<u>Purchased Professional and Technical Services</u>	
322	Professional Educational Services – Ius	933,600.13
329	Professional Educational Services – Other	1,949,035.81
330	Other Professional Services	178,711.07
360	Employee Training and Development Services	15,457.10
Total Purchased Professional and Technical Services		\$3,076,804.11
400	<u>Purchased Property Services</u>	
430	Repairs and Maintenance Services	5,847.80
Total Purchased Property Services		\$5,847.80
500	<u>Other Purchased Services</u>	
510	Student Transportation Services	61,171.20
530	Communications	15,900.25
550	Printing and Binding	7,823.80
561	Tuition To Other School Districts Within the State	83,161.37
562	Tuition To Pennsylvania Charter Schools	983,079.80
564	Tuition To Career and Technology Centers	1,138,289.06
568	Tuition To Private Residential Rehabilitative Institutions (PRRI) [In-State] and Detention Centers	18,305.70
569	Tuition – Other	191,107.94
580	Travel	3,688.14
594	IU Payment By Withholding for Institutionalized Children's Programs – Special Classes	9,333.08
Total Other Purchased Services		\$2,511,860.34
600	<u>Supplies</u>	
610	General Supplies	320,032.55
630	Food	6,464.73
640	Books and Periodicals	63,148.80
650	Supplies & Fees – Technology Related	703,277.51
Total Supplies		\$1,092,923.59
700	<u>Property</u>	
756	Capitalized Technology Equipment – Original	12,434.61
Total Property		\$12,434.61

LEA : 113362303 Eastern Lancaster County SD

Printed 10/22/2020 7:43:40 AM

General Fund (10)	
1000 Instruction	<u>Total</u>
800 <u>Other Objects</u>	
810 Dues and Fees	4,588.56
890 Miscellaneous Expenditures	1,190.00
Total Other Objects	\$5,778.56
Total 1000 Instruction	\$30,051,869.03

LEA : 113362303      Eastern Lancaster County SD

Printed 10/22/2020 7:43:40 AM

General Fund (10)

1100 Regular Programs – Elementary / Secondary	Elementary	Secondary	Federal	Total
<b>100 Personnel Services – Salaries</b>				
100 Personnel Services – Salaries	5,805,037.32	5,593,466.86	697,662.59	12,096,166.77
<b>Total Personnel Services – Salaries</b>	<b>\$5,805,037.32</b>	<b>\$5,593,466.86</b>	<b>\$697,662.59</b>	<b>\$12,096,166.77</b>
<b>200 Personnel Services – Employee Benefits</b>				
210 Group Insurance – Contracted Provider	20,784.50	19,209.88	704.62	40,699.00
220 Social Security Contributions	431,188.68	417,067.46	51,536.99	899,793.13
230 PSERS Retirement Contributions	2,073,204.56	1,956,673.53	106,846.79	4,136,724.88
260 Workers' Compensation	24,055.63	23,300.69	4,384.20	51,740.52
270 Group Insurance – Self-Insurance	982,108.25	970,760.53	84,208.48	2,037,077.26
291 Other Retirement Plans	11,070.00	11,985.00		23,055.00
<b>Total Personnel Services – Employee Benefits</b>	<b>\$3,542,411.62</b>	<b>\$3,398,997.09</b>	<b>\$247,681.08</b>	<b>\$7,189,089.79</b>
<b>300 Purchased Professional and Technical Services</b>				
322 Professional Educational Services – Ius	92.00	368.00		460.00
329 Professional Educational Services – Other	213,654.94	153,778.33	12,041.24	379,474.51
330 Other Professional Services	1,048.15	50.40		1,098.55
<b>Total Purchased Professional and Technical Services</b>	<b>\$214,795.09</b>	<b>\$154,196.73</b>	<b>\$12,041.24</b>	<b>\$381,033.06</b>
<b>400 Purchased Property Services</b>				
430 Repairs and Maintenance Services	2,367.75	3,480.05		5,847.80
<b>Total Purchased Property Services</b>	<b>\$2,367.75</b>	<b>\$3,480.05</b>		<b>\$5,847.80</b>
<b>500 Other Purchased Services</b>				
510 Student Transportation Services	13,639.55	9,084.32		22,723.87
530 Communications	5,754.07	8,984.65		14,738.72
550 Printing and Binding	6,724.80	625.00		7,349.80
561 Tuition To Other School Districts Within the State		17,040.21		17,040.21
562 Tuition To Pennsylvania Charter Schools	139,344.16	481,349.54		620,693.70
568 Tuition To Private Residential Rehabilitative Institutions (PRRI) [In-State] and Detention Centers		44.09		44.09
580 Travel	785.59	588.47		1,374.06
<b>Total Other Purchased Services</b>	<b>\$166,248.17</b>	<b>\$517,716.28</b>		<b>\$683,964.45</b>
<b>600 Supplies</b>				
610 General Supplies	82,710.29	183,965.90	18,391.74	285,067.93
630 Food	1,193.01	2,115.57		3,308.58
640 Books and Periodicals	23,598.92	21,277.94	2,530.22	47,407.08
650 Supplies & Fees – Technology Related	336,668.49	329,511.06	30,724.02	696,903.57
<b>Total Supplies</b>	<b>\$444,170.71</b>	<b>\$536,870.47</b>	<b>\$51,645.98</b>	<b>\$1,032,687.16</b>
<b>700 Property</b>				
756 Capitalized Technology Equipment – Original			12,434.61	12,434.61
<b>Total Property</b>			<b>\$12,434.61</b>	<b>\$12,434.61</b>
<b>800 Other Objects</b>				
810 Dues and Fees	495.00	253.56		748.56
890 Miscellaneous Expenditures	605.00	585.00		1,190.00
<b>Total Other Objects</b>	<b>\$1,100.00</b>	<b>\$838.56</b>		<b>\$1,938.56</b>
<b>Total 1100 Regular Programs – Elementary / Secondary</b>	<b>\$10,176,130.66</b>	<b>\$10,205,566.04</b>	<b>\$1,021,465.50</b>	<b>\$21,403,162.20</b>

LEA : 113362303      Eastern Lancaster County SD

Printed 10/22/2020 7:43:40 AM

General Fund (10)

1110 Regular Programs

	Elementary	Secondary	Federal	Total
<b>100 <u>Personnel Services – Salaries</u></b>				
100 Personnel Services – Salaries	5,805,037.32	5,593,466.86		11,398,504.18
<b>Total Personnel Services – Salaries</b>	<b>\$5,805,037.32</b>	<b>\$5,593,466.86</b>		<b>\$11,398,504.18</b>
<b>200 <u>Personnel Services – Employee Benefits</u></b>				
210 Group Insurance – Contracted Provider	20,784.50	19,209.88		39,994.38
220 Social Security Contributions	431,188.68	417,067.46		848,256.14
230 PSERS Retirement Contributions	2,073,204.56	1,956,673.53		4,029,878.09
260 Workers' Compensation	24,055.63	23,300.69		47,356.32
270 Group Insurance – Self-Insurance	982,108.25	970,760.53		1,952,868.78
291 Other Retirement Plans	11,070.00	11,985.00		23,055.00
<b>Total Personnel Services – Employee Benefits</b>	<b>\$3,542,411.62</b>	<b>\$3,398,997.09</b>		<b>\$6,941,408.71</b>
<b>300 <u>Purchased Professional and Technical Services</u></b>				
322 Professional Educational Services – Ius	92.00	368.00		460.00
329 Professional Educational Services – Other	213,654.94	153,778.33		367,433.27
330 Other Professional Services	1,048.15	50.40		1,098.55
<b>Total Purchased Professional and Technical Services</b>	<b>\$214,795.09</b>	<b>\$154,196.73</b>		<b>\$368,991.82</b>
<b>400 <u>Purchased Property Services</u></b>				
430 Repairs and Maintenance Services	2,367.75	3,480.05		5,847.80
<b>Total Purchased Property Services</b>	<b>\$2,367.75</b>	<b>\$3,480.05</b>		<b>\$5,847.80</b>
<b>500 <u>Other Purchased Services</u></b>				
510 Student Transportation Services	13,639.55	9,084.32		22,723.87
530 Communications	5,754.07	8,984.65		14,738.72
550 Printing and Binding	6,724.80	625.00		7,349.80
561 Tuition To Other School Districts Within the State		17,040.21		17,040.21
562 Tuition To Pennsylvania Charter Schools	139,344.16	481,349.54		620,693.70
568 Tuition To Private Residential Rehabilitative Institutions (PRRI) [In-State] and Detention Centers		44.09		44.09
580 Travel	785.59	588.47		1,374.06
<b>Total Other Purchased Services</b>	<b>\$166,248.17</b>	<b>\$517,716.28</b>		<b>\$683,964.45</b>
<b>600 <u>Supplies</u></b>				
610 General Supplies	82,710.29	183,965.90		266,676.19
630 Food	1,193.01	2,115.57		3,308.58
640 Books and Periodicals	23,598.92	21,277.94		44,876.86
650 Supplies & Fees – Technology Related	336,668.49	329,511.06	22,757.73	688,937.28
<b>Total Supplies</b>	<b>\$444,170.71</b>	<b>\$536,870.47</b>	<b>\$22,757.73</b>	<b>\$1,003,798.91</b>
<b>800 <u>Other Objects</u></b>				
810 Dues and Fees	495.00	253.56		748.56
890 Miscellaneous Expenditures	605.00	585.00		1,190.00
<b>Total Other Objects</b>	<b>\$1,100.00</b>	<b>\$838.56</b>		<b>\$1,938.56</b>
<b>Total 1110 Regular Programs</b>	<b>\$10,176,130.66</b>	<b>\$10,205,566.04</b>	<b>\$22,757.73</b>	<b>\$20,404,454.43</b>

LEA : 113362303      Eastern Lancaster County SD

Printed 10/22/2020 7:43:40 AM

General Fund (10)					
1190 Federally-Funded Regular Programs		Elementary	Secondary	Federal	Total
<b>100 Personnel Services – Salaries</b>					
100 Personnel Services – Salaries				697,662.59	697,662.59
<b>Total Personnel Services – Salaries</b>				<b>\$697,662.59</b>	<b>\$697,662.59</b>
<b>200 Personnel Services – Employee Benefits</b>					
210 Group Insurance – Contracted Provider				704.62	704.62
220 Social Security Contributions				51,536.99	51,536.99
230 PSERS Retirement Contributions				106,846.79	106,846.79
260 Workers' Compensation				4,384.20	4,384.20
270 Group Insurance – Self-Insurance				84,208.48	84,208.48
<b>Total Personnel Services – Employee Benefits</b>				<b>\$247,681.08</b>	<b>\$247,681.08</b>
<b>300 Purchased Professional and Technical Services</b>					
329 Professional Educational Services – Other				12,041.24	12,041.24
<b>Total Purchased Professional and Technical Services</b>				<b>\$12,041.24</b>	<b>\$12,041.24</b>
<b>600 Supplies</b>					
610 General Supplies				18,391.74	18,391.74
640 Books and Periodicals				2,530.22	2,530.22
650 Supplies & Fees – Technology Related				7,966.29	7,966.29
<b>Total Supplies</b>				<b>\$28,888.25</b>	<b>\$28,888.25</b>
<b>700 Property</b>					
756 Capitalized Technology Equipment – Original				12,434.61	12,434.61
<b>Total Property</b>				<b>\$12,434.61</b>	<b>\$12,434.61</b>
<b>Total 1190 Federally-Funded Regular Programs</b>				<b>\$998,707.77</b>	<b>\$998,707.77</b>

LEA : 113362303 Eastern Lancaster County SD

Printed 10/22/2020 7:43:40 AM

General Fund (10)				
1200 Special Programs – Elementary / Secondary	Elementary	Secondary	Federal	Total
100 Personnel Services – Salaries				
100 Personnel Services – Salaries	1,109,300.65	888,292.08	369,356.53	2,366,949.26
Total Personnel Services – Salaries	\$1,109,300.65	\$888,292.08	\$369,356.53	\$2,366,949.26
200 Personnel Services – Employee Benefits				
210 Group Insurance – Contracted Provider	3,426.41	3,358.75	446.25	7,231.41
220 Social Security Contributions	83,092.74	65,453.51	27,350.82	175,897.07
230 PSERS Retirement Contributions	423,755.08	323,259.50	63,326.27	810,340.85
260 Workers' Compensation	4,942.57	3,967.18	2,323.27	11,233.02
270 Group Insurance – Self-Insurance	205,309.73	156,210.43	57,611.04	419,131.20
Total Personnel Services – Employee Benefits	\$720,526.53	\$552,249.37	\$151,057.65	\$1,423,833.55
300 Purchased Professional and Technical Services				
322 Professional Educational Services – lus	55,640.00	612,445.21	240,908.00	908,993.21
329 Professional Educational Services – Other	753,730.42	624,551.91	162,291.00	1,540,573.33
330 Other Professional Services	76,446.34	100,726.18		177,172.52
Total Purchased Professional and Technical Services	\$885,816.76	\$1,337,723.30	\$403,199.00	\$2,626,739.06
500 Other Purchased Services				
510 Student Transportation Services	17,635.34	18,205.70		35,841.04
530 Communications	159.99	680.46		840.45
550 Printing and Binding	114.00	360.00		474.00
561 Tuition To Other School Districts Within the State	3,677.53	62,443.63		66,121.16
562 Tuition To Pennsylvania Charter Schools	76,387.21	285,998.89		362,386.10
568 Tuition To Private Residential Rehabilitative Institutions (PRRI) [In-State] and Detention Centers	10,665.00	7,596.61		18,261.61
569 Tuition – Other	47,163.00	143,944.94		191,107.94
580 Travel	681.63	958.41		1,640.04
594 IU Payment By Withholding for Institutionalized Children's Programs – Special Classes		9,333.08		9,333.08
Total Other Purchased Services	\$156,483.70	\$529,521.72		\$686,005.42
600 Supplies				
610 General Supplies	7,396.97	3,992.82		11,389.79
630 Food	1,468.92	1,663.69		3,132.61
640 Books and Periodicals	4,587.55	3,733.65		8,321.20
650 Supplies & Fees – Technology Related	1,140.83	1,671.79		2,812.62
Total Supplies	\$14,594.27	\$11,061.95		\$25,656.22
800 Other Objects				
810 Dues and Fees	2,905.00	105.00		3,010.00
Total Other Objects	\$2,905.00	\$105.00		\$3,010.00
Total 1200 Special Programs – Elementary / Secondary	\$2,889,626.91	\$3,318,953.42	\$923,613.18	\$7,132,193.51



LEA : 113362303     Eastern Lancaster County SD

Printed 10/22/2020 7:43:40 AM

<b>General Fund (10)</b>				
<b>1210 Life Skills Support</b>	<u>Elementary</u>	<u>Secondary</u>	<u>Federal</u>	<u>Total</u>
<b>100 <u>Personnel Services – Salaries</u></b>				
100 Personnel Services – Salaries	136,756.00	131,180.92		267,936.92
<b>Total Personnel Services – Salaries</b>	<b>\$136,756.00</b>	<b>\$131,180.92</b>		<b>\$267,936.92</b>
<b>200 <u>Personnel Services – Employee Benefits</u></b>				
210 Group Insurance – Contracted Provider	475.00	548.75		1,023.75
220 Social Security Contributions	10,190.90	9,296.08		19,486.98
230 PSERS Retirement Contributions	46,893.58	44,981.77		91,875.35
260 Workers' Compensation	563.76	540.89		1,104.65
270 Group Insurance – Self-Insurance	25,915.20	33,809.56		59,724.76
<b>Total Personnel Services – Employee Benefits</b>	<b>\$84,038.44</b>	<b>\$89,177.05</b>		<b>\$173,215.49</b>
<b>300 <u>Purchased Professional and Technical Services</u></b>				
322 Professional Educational Services – lus		38,911.88		38,911.88
329 Professional Educational Services – Other	89,691.82	102,926.29		192,618.11
330 Other Professional Services		209.70		209.70
<b>Total Purchased Professional and Technical Services</b>	<b>\$89,691.82</b>	<b>\$142,047.87</b>		<b>\$231,739.69</b>
<b>500 <u>Other Purchased Services</u></b>				
510 Student Transportation Services	3,527.07	3,527.07		7,054.14
530 Communications	0.50	44.94		45.44
562 Tuition To Pennsylvania Charter Schools	24,599.27			24,599.27
<b>Total Other Purchased Services</b>	<b>\$28,126.84</b>	<b>\$3,572.01</b>		<b>\$31,698.85</b>
<b>600 <u>Supplies</u></b>				
610 General Supplies	214.45	1,099.62		1,314.07
630 Food		398.60		398.60
640 Books and Periodicals	1,238.12	1,500.09		2,738.21
650 Supplies & Fees – Technology Related		455.13		455.13
<b>Total Supplies</b>	<b>\$1,452.57</b>	<b>\$3,453.44</b>		<b>\$4,906.01</b>
<b>Total 1210 Life Skills Support</b>	<b>\$340,065.67</b>	<b>\$369,431.29</b>		<b>\$709,496.96</b>

LEA : 113362303      Eastern Lancaster County SD

Printed 10/22/2020 7:43:40 AM

General Fund (10)				
1220 Sensory Support	<u>Elementary</u>	<u>Secondary</u>	<u>Federal</u>	<u>Total</u>
100 <u>Personnel Services – Salaries</u>				
100 Personnel Services – Salaries	49,237.36		115,744.53	164,981.89
<b>Total Personnel Services – Salaries</b>	<b>\$49,237.36</b>		<b>\$115,744.53</b>	<b>\$164,981.89</b>
200 <u>Personnel Services – Employee Benefits</u>				
210 Group Insurance – Contracted Provider	81.25	2.50	142.50	226.25
220 Social Security Contributions	3,729.02		8,842.94	12,571.96
230 PSERS Retirement Contributions	29,622.89	6,933.47	19,844.34	56,400.70
260 Workers' Compensation	309.62		727.93	1,037.55
270 Group Insurance – Self-Insurance	7,318.21	252.35	6,939.68	14,510.24
<b>Total Personnel Services – Employee Benefits</b>	<b>\$41,060.99</b>	<b>\$7,188.32</b>	<b>\$36,497.39</b>	<b>\$84,746.70</b>
300 <u>Purchased Professional and Technical Services</u>				
322 Professional Educational Services – lus	33,770.00	87,652.72		121,422.72
330 Other Professional Services	71,799.64	97,482.95		169,282.59
<b>Total Purchased Professional and Technical Services</b>	<b>\$105,569.64</b>	<b>\$185,135.67</b>		<b>\$290,705.31</b>
500 <u>Other Purchased Services</u>				
530 Communications	5.00			5.00
550 Printing and Binding	114.00	114.00		228.00
<b>Total Other Purchased Services</b>	<b>\$119.00</b>	<b>\$114.00</b>		<b>\$233.00</b>
600 <u>Supplies</u>				
610 General Supplies	601.30	568.78		1,170.08
650 Supplies & Fees – Technology Related	199.28	199.28		398.56
<b>Total Supplies</b>	<b>\$800.58</b>	<b>\$768.06</b>		<b>\$1,568.64</b>
<b>Total 1220 Sensory Support</b>	<b>\$196,787.57</b>	<b>\$193,206.05</b>	<b>\$152,241.92</b>	<b>\$542,235.54</b>

LEA : 113362303     Eastern Lancaster County SD

Printed 10/22/2020 7:43:40 AM

General Fund (10)

1230 Emotional Support	Elementary	Secondary	Federal	Total
<b>100 Personnel Services – Salaries</b>				
100 Personnel Services – Salaries	414,970.15	240,052.27	112,664.00	767,686.42
<b>Total Personnel Services – Salaries</b>	<b>\$414,970.15</b>	<b>\$240,052.27</b>	<b>\$112,664.00</b>	<b>\$767,686.42</b>
<b>200 Personnel Services – Employee Benefits</b>				
210 Group Insurance – Contracted Provider	1,144.50	1,033.50	161.25	2,339.25
220 Social Security Contributions	31,292.98	17,640.06	8,462.79	57,395.83
230 PSERS Retirement Contributions	161,438.05	82,313.91	19,316.26	263,068.22
260 Workers' Compensation	1,822.54	990.64	708.75	3,521.93
270 Group Insurance – Self-Insurance	72,625.16	45,821.00	18,117.52	136,563.68
<b>Total Personnel Services – Employee Benefits</b>	<b>\$268,323.23</b>	<b>\$147,799.11</b>	<b>\$46,766.57</b>	<b>\$462,888.91</b>
<b>300 Purchased Professional and Technical Services</b>				
322 Professional Educational Services – lus		319,158.21	237,477.00	556,635.21
329 Professional Educational Services – Other	469,478.96	326,164.20		795,643.16
330 Other Professional Services	62.10	1,369.40		1,431.50
<b>Total Purchased Professional and Technical Services</b>	<b>\$469,541.06</b>	<b>\$646,691.81</b>	<b>\$237,477.00</b>	<b>\$1,353,709.87</b>
<b>500 Other Purchased Services</b>				
510 Student Transportation Services	7,054.14	7,624.50		14,678.64
530 Communications	16.00	94.14		110.14
561 Tuition To Other School Districts Within the State		45,213.80		45,213.80
562 Tuition To Pennsylvania Charter Schools		98,526.56		98,526.56
568 Tuition To Private Residential Rehabilitative Institutions (PRRI) [In-State] and Detention Centers	10,665.00	7,596.61		18,261.61
569 Tuition – Other	47,163.00	143,944.94		191,107.94
580 Travel		927.36		927.36
<b>Total Other Purchased Services</b>	<b>\$64,898.14</b>	<b>\$303,927.91</b>		<b>\$368,826.05</b>
<b>600 Supplies</b>				
610 General Supplies	1,315.00	601.74		1,916.74
630 Food	1,468.92	1,222.17		2,691.09
640 Books and Periodicals	2,010.95	517.25		2,528.20
<b>Total Supplies</b>	<b>\$4,794.87</b>	<b>\$2,341.16</b>		<b>\$7,136.03</b>
<b>Total 1230 Emotional Support</b>	<b>\$1,222,527.45</b>	<b>\$1,340,812.26</b>	<b>\$396,907.57</b>	<b>\$2,960,247.28</b>

LEA : 113362303      Eastern Lancaster County SD

Printed 10/22/2020 7:43:40 AM

<b>General Fund (10)</b>				
<b>1240 Academic Support</b>	<b><u>Elementary</u></b>	<b><u>Secondary</u></b>	<b><u>Federal</u></b>	<b><u>Total</u></b>
<b>100 <u>Personnel Services – Salaries</u></b>				
100 Personnel Services – Salaries	387,605.14	445,637.89	69,527.00	902,770.03
<b>Total Personnel Services – Salaries</b>	<b>\$387,605.14</b>	<b>\$445,637.89</b>	<b>\$69,527.00</b>	<b>\$902,770.03</b>
<b>200 <u>Personnel Services – Employee Benefits</u></b>				
210 Group Insurance – Contracted Provider	1,392.66	1,490.25	71.25	2,954.16
220 Social Security Contributions	28,878.16	33,246.29	5,045.86	67,170.31
230 PSERS Retirement Contributions	144,401.55	152,294.82	11,920.50	308,616.87
260 Workers' Compensation	1,748.99	1,986.38	437.32	4,172.69
270 Group Insurance – Self-Insurance	74,983.80	67,277.24	16,276.92	158,537.96
<b>Total Personnel Services – Employee Benefits</b>	<b>\$251,405.16</b>	<b>\$256,294.98</b>	<b>\$33,751.85</b>	<b>\$541,451.99</b>
<b>300 <u>Purchased Professional and Technical Services</u></b>				
322 Professional Educational Services – lus		166,722.40	2,122.00	168,844.40
329 Professional Educational Services – Other	122,215.25	159,095.59		281,310.84
330 Other Professional Services	4,584.60	1,517.20		6,101.80
<b>Total Purchased Professional and Technical Services</b>	<b>\$126,799.85</b>	<b>\$327,335.19</b>	<b>\$2,122.00</b>	<b>\$456,257.04</b>
<b>500 <u>Other Purchased Services</u></b>				
510 Student Transportation Services	3,527.07	3,527.07		7,054.14
530 Communications	129.89	540.23		670.12
561 Tuition To Other School Districts Within the State	3,677.53	17,229.83		20,907.36
562 Tuition To Pennsylvania Charter Schools	51,787.94	187,472.33		239,260.27
580 Travel	665.85	31.05		696.90
<b>Total Other Purchased Services</b>	<b>\$59,788.28</b>	<b>\$208,800.51</b>		<b>\$268,588.79</b>
<b>600 <u>Supplies</u></b>				
610 General Supplies	790.82	335.93		1,126.75
640 Books and Periodicals	1,338.48	1,716.31		3,054.79
650 Supplies & Fees – Technology Related	59.88	135.00		194.88
<b>Total Supplies</b>	<b>\$2,189.18</b>	<b>\$2,187.24</b>		<b>\$4,376.42</b>
<b>800 <u>Other Objects</u></b>				
810 Dues and Fees	2,905.00	105.00		3,010.00
<b>Total Other Objects</b>	<b>\$2,905.00</b>	<b>\$105.00</b>		<b>\$3,010.00</b>
<b>Total 1240 Academic Support</b>	<b>\$830,692.61</b>	<b>\$1,240,360.81</b>	<b>\$105,400.85</b>	<b>\$2,176,454.27</b>

LEA : 113362303     Eastern Lancaster County SD

Printed 10/22/2020 7:43:40 AM

General Fund (10)

1241 Learning Support – Public	Elementary	Secondary	Federal	Total
100 <u>Personnel Services – Salaries</u>				
100 Personnel Services – Salaries	319,543.14	378,610.89	69,527.00	767,681.03
<b>Total Personnel Services – Salaries</b>	<b>\$319,543.14</b>	<b>\$378,610.89</b>	<b>\$69,527.00</b>	<b>\$767,681.03</b>
200 <u>Personnel Services – Employee Benefits</u>				
210 Group Insurance – Contracted Provider	1,315.16	1,290.50	71.25	2,676.91
220 Social Security Contributions	23,753.22	28,305.43	5,045.86	57,104.51
230 PSERS Retirement Contributions	121,063.16	129,311.17	11,920.50	262,294.83
260 Workers' Compensation	1,320.79	1,564.68	437.32	3,322.79
270 Group Insurance – Self-Insurance	57,227.16	59,075.80	16,276.92	132,579.88
<b>Total Personnel Services – Employee Benefits</b>	<b>\$204,679.49</b>	<b>\$219,547.58</b>	<b>\$33,751.85</b>	<b>\$457,978.92</b>
300 <u>Purchased Professional and Technical Services</u>				
322 Professional Educational Services – lus		166,722.40	2,122.00	168,844.40
329 Professional Educational Services – Other	122,215.25	159,095.59		281,310.84
330 Other Professional Services	4,584.60	1,517.20		6,101.80
<b>Total Purchased Professional and Technical Services</b>	<b>\$126,799.85</b>	<b>\$327,335.19</b>	<b>\$2,122.00</b>	<b>\$456,257.04</b>
500 <u>Other Purchased Services</u>				
510 Student Transportation Services	3,527.07	3,527.07		7,054.14
530 Communications	16.15	414.91		431.06
561 Tuition To Other School Districts Within the State	3,677.53	17,229.83		20,907.36
562 Tuition To Pennsylvania Charter Schools	51,787.94	187,472.33		239,260.27
580 Travel	555.78	5.51		561.29
<b>Total Other Purchased Services</b>	<b>\$59,564.47</b>	<b>\$208,649.65</b>		<b>\$268,214.12</b>
600 <u>Supplies</u>				
610 General Supplies	790.82	335.93		1,126.75
640 Books and Periodicals	1,338.48	1,674.37		3,012.85
650 Supplies & Fees – Technology Related		135.00		135.00
<b>Total Supplies</b>	<b>\$2,129.30</b>	<b>\$2,145.30</b>		<b>\$4,274.60</b>
<b>Total 1241 Learning Support – Public</b>	<b>\$712,716.25</b>	<b>\$1,136,288.61</b>	<b>\$105,400.85</b>	<b>\$1,954,405.71</b>

LEA : 113362303      Eastern Lancaster County SD

Printed 10/22/2020 7:43:40 AM

General Fund (10)				
1243 Gifted Support	<u>Elementary</u>	<u>Secondary</u>	<u>Federal</u>	<u>Total</u>
100 <u>Personnel Services – Salaries</u>				
100 Personnel Services – Salaries	68,062.00	67,027.00		135,089.00
<b>Total Personnel Services – Salaries</b>	<b>\$68,062.00</b>	<b>\$67,027.00</b>		<b>\$135,089.00</b>
200 <u>Personnel Services – Employee Benefits</u>				
210 Group Insurance – Contracted Provider	77.50	199.75		277.25
220 Social Security Contributions	5,124.94	4,940.86		10,065.80
230 PSERS Retirement Contributions	23,338.39	22,983.65		46,322.04
260 Workers' Compensation	428.20	421.70		849.90
270 Group Insurance – Self-Insurance	17,756.64	8,201.44		25,958.08
<b>Total Personnel Services – Employee Benefits</b>	<b>\$46,725.67</b>	<b>\$36,747.40</b>		<b>\$83,473.07</b>
500 <u>Other Purchased Services</u>				
530 Communications	113.74	125.32		239.06
580 Travel	110.07	25.54		135.61
<b>Total Other Purchased Services</b>	<b>\$223.81</b>	<b>\$150.86</b>		<b>\$374.67</b>
600 <u>Supplies</u>				
640 Books and Periodicals		41.94		41.94
650 Supplies & Fees – Technology Related	59.88			59.88
<b>Total Supplies</b>	<b>\$59.88</b>	<b>\$41.94</b>		<b>\$101.82</b>
800 <u>Other Objects</u>				
810 Dues and Fees	2,905.00	105.00		3,010.00
<b>Total Other Objects</b>	<b>\$2,905.00</b>	<b>\$105.00</b>		<b>\$3,010.00</b>
<b>Total 1243 Gifted Support</b>	<b>\$117,976.36</b>	<b>\$104,072.20</b>		<b>\$222,048.56</b>

LEA : 113362303      Eastern Lancaster County SD

Printed 10/22/2020 7:43:40 AM

General Fund (10)				
1270 Multi-Handicapped Support	Elementary	Secondary	Federal	Total
100 Personnel Services – Salaries				
100 Personnel Services – Salaries	120,732.00	71,421.00	71,421.00	263,574.00
Total Personnel Services – Salaries	\$120,732.00	\$71,421.00	\$71,421.00	\$263,574.00
200 Personnel Services – Employee Benefits				
210 Group Insurance – Contracted Provider	333.00	283.75	71.25	688.00
220 Social Security Contributions	9,001.68	5,271.08	4,999.23	19,271.99
230 PSERS Retirement Contributions	41,399.01	36,735.53	12,245.17	90,379.71
260 Workers' Compensation	497.66	449.27	449.27	1,396.20
270 Group Insurance – Self-Insurance	24,467.36	9,050.28	16,276.92	49,794.56
Total Personnel Services – Employee Benefits	\$75,698.71	\$51,789.91	\$34,041.84	\$161,530.46
300 Purchased Professional and Technical Services				
329 Professional Educational Services – Other	72,344.39	36,365.83		108,710.22
Total Purchased Professional and Technical Services	\$72,344.39	\$36,365.83		\$108,710.22
500 Other Purchased Services				
510 Student Transportation Services	3,527.06	3,527.06		7,054.12
530 Communications	8.60	1.15		9.75
550 Printing and Binding		246.00		246.00
580 Travel	15.78			15.78
Total Other Purchased Services	\$3,551.44	\$3,774.21		\$7,325.65
600 Supplies				
610 General Supplies	4,475.40	1,386.75		5,862.15
630 Food		42.92		42.92
650 Supplies & Fees – Technology Related	131.97	132.08		264.05
Total Supplies	\$4,607.37	\$1,561.75		\$6,169.12
Total 1270 Multi-Handicapped Support	\$276,933.91	\$164,912.70	\$105,462.84	\$547,309.45

LEA : 113362303 Eastern Lancaster County SD

Printed 10/22/2020 7:43:40 AM

General Fund (10)

1280 Early Intervention Support

300 Purchased Professional and Technical Services

322 Professional Educational Services – lus	Elementary	Secondary	Federal	Total
	21,870.00		1,309.00	23,179.00
Total Purchased Professional and Technical Services	\$21,870.00		\$1,309.00	\$23,179.00
Total 1280 Early Intervention Support	\$21,870.00		\$1,309.00	\$23,179.00



LEA : 113362303      Eastern Lancaster County SD

Printed 10/22/2020 7:43:40 AM

General Fund (10)				
1290 Special Programs - Other Support	<u>Elementary</u>	<u>Secondary</u>	<u>Federal</u>	<u>Total</u>
300 <u>Purchased Professional and Technical Services</u>				
329 Professional Educational Services – Other			162,291.00	162,291.00
330 Other Professional Services		146.93		146.93
<b>Total Purchased Professional and Technical Services</b>		<b>\$146.93</b>	<b>\$162,291.00</b>	<b>\$162,437.93</b>
500 <u>Other Purchased Services</u>				
594 IU Payment By Withholding for Institutionalized Children's Programs – Special Classes		9,333.08		9,333.08
<b>Total Other Purchased Services</b>		<b>\$9,333.08</b>		<b>\$9,333.08</b>
600 <u>Supplies</u>				
650 Supplies & Fees – Technology Related	749.70	750.30		1,500.00
<b>Total Supplies</b>	<b>\$749.70</b>	<b>\$750.30</b>		<b>\$1,500.00</b>
<b>Total 1290 Special Programs - Other Support</b>	<b>\$749.70</b>	<b>\$10,230.31</b>	<b>\$162,291.00</b>	<b>\$173,271.01</b>

LEA : 113362303      Eastern Lancaster County SD

Printed 10/22/2020 7:43:40 AM

<b>General Fund (10)</b>				
<b>1300 Vocational Education</b>	<b><u>Elementary</u></b>	<b><u>Secondary</u></b>	<b><u>Federal</u></b>	<b><u>Total</u></b>
<b>100 <u>Personnel Services – Salaries</u></b>				
100 Personnel Services – Salaries		65,044.85		65,044.85
<b>Total Personnel Services – Salaries</b>		<b>\$65,044.85</b>		<b>\$65,044.85</b>
<b>200 <u>Personnel Services – Employee Benefits</u></b>				
210 Group Insurance – Contracted Provider		193.50		193.50
220 Social Security Contributions		4,891.52		4,891.52
230 PSERS Retirement Contributions		22,303.82		22,303.82
260 Workers' Compensation		409.21		409.21
270 Group Insurance – Self-Insurance		7,570.56		7,570.56
<b>Total Personnel Services – Employee Benefits</b>		<b>\$35,368.61</b>		<b>\$35,368.61</b>
<b>300 <u>Purchased Professional and Technical Services</u></b>				
329 Professional Educational Services – Other		4,191.04		4,191.04
<b>Total Purchased Professional and Technical Services</b>		<b>\$4,191.04</b>		<b>\$4,191.04</b>
<b>500 <u>Other Purchased Services</u></b>				
510 Student Transportation Services		2,606.29		2,606.29
530 Communications		321.08		321.08
564 Tuition To Career and Technology Centers		1,138,289.06		1,138,289.06
580 Travel		87.23		87.23
<b>Total Other Purchased Services</b>		<b>\$1,141,303.66</b>		<b>\$1,141,303.66</b>
<b>600 <u>Supplies</u></b>				
610 General Supplies		13,843.25		13,843.25
630 Food		23.54		23.54
640 Books and Periodicals		248.32		248.32
650 Supplies & Fees – Technology Related		200.00		200.00
<b>Total Supplies</b>		<b>\$14,315.11</b>		<b>\$14,315.11</b>
<b>800 <u>Other Objects</u></b>				
810 Dues and Fees		290.00		290.00
<b>Total Other Objects</b>		<b>\$290.00</b>		<b>\$290.00</b>
<b>Total 1300 Vocational Education</b>		<b>\$1,260,513.27</b>		<b>\$1,260,513.27</b>

LEA : 113362303      Eastern Lancaster County SD

Printed 10/22/2020 7:43:40 AM

General Fund (10)				
1400 Other Instructional Programs – Elementary / Secondary	<u>Elementary</u>	<u>Secondary</u>	<u>Federal</u>	<u>Total</u>
100 <u>Personnel Services – Salaries</u>				
100 Personnel Services – Salaries	12,144.00	101,685.64		113,829.64
<b>Total Personnel Services – Salaries</b>	<b>\$12,144.00</b>	<b>\$101,685.64</b>		<b>\$113,829.64</b>
200 <u>Personnel Services – Employee Benefits</u>				
210 Group Insurance – Contracted Provider		203.50		203.50
220 Social Security Contributions	921.33	7,679.60		8,600.93
230 PSERS Retirement Contributions	4,164.17	34,868.05		39,032.22
260 Workers' Compensation	76.40	453.94		530.34
270 Group Insurance – Self-Insurance		7,570.56		7,570.56
<b>Total Personnel Services – Employee Benefits</b>	<b>\$5,161.90</b>	<b>\$50,775.65</b>		<b>\$55,937.55</b>
300 <u>Purchased Professional and Technical Services</u>				
329 Professional Educational Services – Other	693.16	24,103.77		24,796.93
330 Other Professional Services		440.00		440.00
<b>Total Purchased Professional and Technical Services</b>	<b>\$693.16</b>	<b>\$24,543.77</b>		<b>\$25,236.93</b>
500 <u>Other Purchased Services</u>				
580 Travel	426.84			426.84
<b>Total Other Purchased Services</b>	<b>\$426.84</b>			<b>\$426.84</b>
600 <u>Supplies</u>				
610 General Supplies		288.03		288.03
<b>Total Supplies</b>		<b>\$288.03</b>		<b>\$288.03</b>
800 <u>Other Objects</u>				
810 Dues and Fees		470.00		470.00
<b>Total Other Objects</b>		<b>\$470.00</b>		<b>\$470.00</b>
<b>Total 1400 Other Instructional Programs – Elementary / Secondary</b>	<b>\$18,425.90</b>	<b>\$177,763.09</b>		<b>\$196,188.99</b>

LEA : 113362303      Eastern Lancaster County SD

Printed 10/22/2020 7:43:40 AM

General Fund (10)				
1420 Summer School	<u>Elementary</u>	<u>Secondary</u>	<u>Federal</u>	<u>Total</u>
100 <u>Personnel Services – Salaries</u>				
100 Personnel Services – Salaries	9,429.75	19,940.25		29,370.00
<b>Total Personnel Services – Salaries</b>	<b>\$9,429.75</b>	<b>\$19,940.25</b>		<b>\$29,370.00</b>
200 <u>Personnel Services – Employee Benefits</u>				
220 Social Security Contributions	717.43	1,505.99		2,223.42
230 PSERS Retirement Contributions	3,233.46	6,837.53		10,070.99
260 Workers’ Compensation	59.31	116.26		175.57
<b>Total Personnel Services – Employee Benefits</b>	<b>\$4,010.20</b>	<b>\$8,459.78</b>		<b>\$12,469.98</b>
500 <u>Other Purchased Services</u>				
580 Travel	241.05			241.05
<b>Total Other Purchased Services</b>	<b>\$241.05</b>			<b>\$241.05</b>
<b>Total 1420 Summer School</b>	<b>\$13,681.00</b>	<b>\$28,400.03</b>		<b>\$42,081.03</b>

LEA : 113362303      Eastern Lancaster County SD

Printed 10/22/2020 7:43:40 AM

General Fund (10)				
1430 Homebound Instruction	<u>Elementary</u>	<u>Secondary</u>	<u>Federal</u>	<u>Total</u>
100 <u>Personnel Services – Salaries</u>				
100 Personnel Services – Salaries	2,714.25	324.39		3,038.64
<b>Total Personnel Services – Salaries</b>	<b>\$2,714.25</b>	<b>\$324.39</b>		<b>\$3,038.64</b>
200 <u>Personnel Services – Employee Benefits</u>				
220 Social Security Contributions	203.90	24.01		227.91
230 PSERS Retirement Contributions	930.71	111.23		1,041.94
260 Workers’ Compensation	17.09	2.04		19.13
<b>Total Personnel Services – Employee Benefits</b>	<b>\$1,151.70</b>	<b>\$137.28</b>		<b>\$1,288.98</b>
300 <u>Purchased Professional and Technical Services</u>				
329 Professional Educational Services – Other	693.16	10,212.75		10,905.91
<b>Total Purchased Professional and Technical Services</b>	<b>\$693.16</b>	<b>\$10,212.75</b>		<b>\$10,905.91</b>
500 <u>Other Purchased Services</u>				
580 Travel	185.79			185.79
<b>Total Other Purchased Services</b>	<b>\$185.79</b>			<b>\$185.79</b>
<b>Total 1430 Homebound Instruction</b>	<b>\$4,744.90</b>	<b>\$10,674.42</b>		<b>\$15,419.32</b>

LEA : 113362303 Eastern Lancaster County SD

Printed 10/22/2020 7:43:40 AM

General Fund (10)				
1440 Alternative Regular Education Programs	<u>Elementary</u>	<u>Secondary</u>	<u>Federal</u>	<u>Total</u>
100 <u>Personnel Services – Salaries</u>				
100 Personnel Services – Salaries		81,421.00		81,421.00
Total Personnel Services – Salaries		\$81,421.00		\$81,421.00
200 <u>Personnel Services – Employee Benefits</u>				
210 Group Insurance – Contracted Provider		203.50		203.50
220 Social Security Contributions		6,149.60		6,149.60
230 PSERS Retirement Contributions		27,919.29		27,919.29
260 Workers' Compensation		335.64		335.64
270 Group Insurance – Self-Insurance		7,570.56		7,570.56
Total Personnel Services – Employee Benefits		\$42,178.59		\$42,178.59
300 <u>Purchased Professional and Technical Services</u>				
329 Professional Educational Services – Other		13,891.02		13,891.02
330 Other Professional Services		440.00		440.00
Total Purchased Professional and Technical Services		\$14,331.02		\$14,331.02
600 <u>Supplies</u>				
610 General Supplies		288.03		288.03
Total Supplies		\$288.03		\$288.03
800 <u>Other Objects</u>				
810 Dues and Fees		470.00		470.00
Total Other Objects		\$470.00		\$470.00
Total 1440 Alternative Regular Education Programs		\$138,688.64		\$138,688.64

LEA : 113362303      Eastern Lancaster County SD

Printed 10/22/2020 7:43:40 AM

General Fund (10)				
1442 Alternative Education Programs	<u>Elementary</u>	<u>Secondary</u>	<u>Federal</u>	<u>Total</u>
100 <u>Personnel Services – Salaries</u>				
100 Personnel Services – Salaries		81,421.00		81,421.00
Total Personnel Services – Salaries		\$81,421.00		\$81,421.00
200 <u>Personnel Services – Employee Benefits</u>				
210 Group Insurance – Contracted Provider		203.50		203.50
220 Social Security Contributions		6,149.60		6,149.60
230 PSERS Retirement Contributions		27,919.29		27,919.29
260 Workers' Compensation		335.64		335.64
270 Group Insurance – Self-Insurance		7,570.56		7,570.56
Total Personnel Services – Employee Benefits		\$42,178.59		\$42,178.59
300 <u>Purchased Professional and Technical Services</u>				
329 Professional Educational Services – Other		13,891.02		13,891.02
330 Other Professional Services		440.00		440.00
Total Purchased Professional and Technical Services		\$14,331.02		\$14,331.02
600 <u>Supplies</u>				
610 General Supplies		288.03		288.03
Total Supplies		\$288.03		\$288.03
800 <u>Other Objects</u>				
810 Dues and Fees		470.00		470.00
Total Other Objects		\$470.00		\$470.00
Total 1442 Alternative Education Programs		\$138,688.64		\$138,688.64

LEA : 113362303 Eastern Lancaster County SD

Printed 10/22/2020 7:43:40 AM

General Fund (10)

1500 Nonpublic School Programs

	<u>Elementary</u>	<u>Secondary</u>	<u>Federal</u>	<u>Total</u>
<b>300 <u>Purchased Professional and Technical Services</u></b>				
322 Professional Educational Services – Ius			24,146.92	24,146.92
360 Employee Training and Development Services			15,457.10	15,457.10
<b>Total Purchased Professional and Technical Services</b>			<b>\$39,604.02</b>	<b>\$39,604.02</b>
<b>500 <u>Other Purchased Services</u></b>				
580 Travel			159.97	159.97
<b>Total Other Purchased Services</b>			<b>\$159.97</b>	<b>\$159.97</b>
<b>600 <u>Supplies</u></b>				
610 General Supplies			9,443.55	9,443.55
640 Books and Periodicals			7,172.20	7,172.20
650 Supplies & Fees – Technology Related			3,361.32	3,361.32
<b>Total Supplies</b>			<b>\$19,977.07</b>	<b>\$19,977.07</b>
<b>800 <u>Other Objects</u></b>				
810 Dues and Fees			70.00	70.00
<b>Total Other Objects</b>			<b>\$70.00</b>	<b>\$70.00</b>
<b>Total 1500 Nonpublic School Programs</b>			<b>\$59,811.06</b>	<b>\$59,811.06</b>



LEA : 113362303      Eastern Lancaster County SD

Printed 10/22/2020 7:43:46 AM

General Fund (10)

2000 Support Services

Total

100	<u>Personnel Services – Salaries</u>	
100	Personnel Services – Salaries	7,137,959.55
<b>Total Personnel Services – Salaries</b>		<b>\$7,137,959.55</b>
200	<u>Personnel Services – Employee Benefits</u>	
210	Group Insurance – Contracted Provider	30,089.51
220	Social Security Contributions	518,542.78
230	PSERS Retirement Contributions	2,397,426.18
240	Tuition Reimbursement	445,743.82
260	Workers' Compensation	32,364.14
270	Group Insurance – Self-Insurance	1,037,741.49
291	Other Retirement Plans	45,030.49
<b>Total Personnel Services – Employee Benefits</b>		<b>\$4,506,938.41</b>
300	<u>Purchased Professional and Technical Services</u>	
322	Professional Educational Services – Ius	153,836.73
329	Professional Educational Services – Other	109,292.40
330	Other Professional Services	781,021.58
340	Technical Services	38,806.69
350	Security / Safety Services	5,564.00
360	Employee Training and Development Services	74,426.20
390	Other Purchased Professional and Technical Services	29,260.46
<b>Total Purchased Professional and Technical Services</b>		<b>\$1,192,208.06</b>
400	<u>Purchased Property Services</u>	
410	Cleaning Services	728,899.07
420	Utility Services	56,520.25
430	Repairs and Maintenance Services	507,369.27
440	Rentals	15,211.97
460	Extermination Services	5,433.00
<b>Total Purchased Property Services</b>		<b>\$1,313,433.56</b>
500	<u>Other Purchased Services</u>	
510	Student Transportation Services	732.09
513	Contracted Carriers	2,152,874.68
516	Student Transportation Services From the IU	26,561.40
520	Insurance – General	469.00
523	General Property and Liability Insurance	151,246.00
530	Communications	153,768.11
549	Other Advertising/Public Relations	12,046.41
550	Printing and Binding	35,472.17
580	Travel	40,718.41
595	IU Payments By Withholding	36,073.76
<b>Total Other Purchased Services</b>		<b>\$2,609,962.03</b>
600	<u>Supplies</u>	
610	General Supplies	605,986.83
620	Energy	778,921.94
630	Food	21,740.48

General Fund (10)

2000 Support Services

Total

600 <u>Supplies</u>	
640 Books and Periodicals	36,656.80
650 Supplies & Fees – Technology Related	874,654.59
<b>Total Supplies</b>	<b>\$2,317,960.64</b>
700 <u>Property</u>	
752 Capital Equipment – Original and Additional	44,348.00
756 Capitalized Technology Equipment – Original	195,771.28
762 Capitalized Equipment - Replacement	505,419.00
766 Capitalized Technology Equipment – Replacement	144,807.10
<b>Total Property</b>	<b>\$890,345.38</b>
800 <u>Other Objects</u>	
810 Dues and Fees	52,830.11
<b>Total Other Objects</b>	<b>\$52,830.11</b>
<b>Total 2000 Support Services</b>	<b>\$20,021,637.74</b>

LEA : 113362303     Eastern Lancaster County SD

Printed 10/22/2020 7:43:46 AM

General Fund (10)

2100 Support Services – Students	Elementary	Secondary	Federal	Total
100 <u>Personnel Services – Salaries</u>				
100 Personnel Services – Salaries	466,244.01	491,573.54		1,170,668.09
<b>Total Personnel Services – Salaries</b>	<b>\$466,244.01</b>	<b>\$491,573.54</b>		<b>\$1,170,668.09</b>
200 <u>Personnel Services – Employee Benefits</u>				
210 Group Insurance – Contracted Provider	1,058.25	1,455.56		3,072.91
220 Social Security Contributions	35,285.69	36,960.22		87,866.63
230 PSERS Retirement Contributions	159,188.91	167,875.10		399,620.19
260 Workers' Compensation	2,584.46	2,272.91		6,188.22
270 Group Insurance – Self-Insurance	28,246.23	62,075.57		140,119.32
<b>Total Personnel Services – Employee Benefits</b>	<b>\$226,363.54</b>	<b>\$270,639.36</b>		<b>\$636,867.27</b>
300 <u>Purchased Professional and Technical Services</u>				
322 Professional Educational Services – lus		7,694.23	138,549.00	146,243.23
329 Professional Educational Services – Other		39,356.69		39,356.69
330 Other Professional Services	2,344.06	2,793.75	72.76	65,487.91
<b>Total Purchased Professional and Technical Services</b>	<b>\$2,344.06</b>	<b>\$49,844.67</b>	<b>\$138,621.76</b>	<b>\$251,087.83</b>
400 <u>Purchased Property Services</u>				
440 Rentals		140.50		140.50
<b>Total Purchased Property Services</b>		<b>\$140.50</b>		<b>\$140.50</b>
500 <u>Other Purchased Services</u>				
510 Student Transportation Services		732.09		732.09
530 Communications	455.28	4,073.71		4,543.79
550 Printing and Binding		649.00		728.75
580 Travel	47.10	236.33		348.10
<b>Total Other Purchased Services</b>	<b>\$502.38</b>	<b>\$5,691.13</b>		<b>\$6,352.73</b>
600 <u>Supplies</u>				
610 General Supplies	2,487.23	9,970.94		16,796.31
630 Food				22.68
640 Books and Periodicals		11,029.59		11,029.59
650 Supplies & Fees – Technology Related	18,901.80	20,157.77		39,059.57
<b>Total Supplies</b>	<b>\$21,389.03</b>	<b>\$41,158.30</b>		<b>\$66,908.15</b>
800 <u>Other Objects</u>				
810 Dues and Fees	873.00	1,240.00		2,312.00
<b>Total Other Objects</b>	<b>\$873.00</b>	<b>\$1,240.00</b>		<b>\$2,312.00</b>
<b>Total 2100 Support Services – Students</b>	<b>\$717,716.02</b>	<b>\$860,287.50</b>	<b>\$138,621.76</b>	<b>\$2,134,336.57</b>

LEA : 113362303 Eastern Lancaster County SD

Printed 10/22/2020 7:43:46 AM

General Fund (10)

2120 Guidance Services	Elementary	Secondary	Federal	Total
100 <u>Personnel Services – Salaries</u>				
100 Personnel Services – Salaries	202,545.00	374,271.94		576,816.94
<b>Total Personnel Services – Salaries</b>	<b>\$202,545.00</b>	<b>\$374,271.94</b>		<b>\$576,816.94</b>
200 <u>Personnel Services – Employee Benefits</u>				
210 Group Insurance – Contracted Provider	532.50	1,301.31		1,833.81
220 Social Security Contributions	15,150.20	28,152.75		43,302.95
230 PSERS Retirement Contributions	69,452.61	127,995.32		197,447.93
260 Workers' Compensation	1,274.00	1,542.11		2,816.11
270 Group Insurance – Self-Insurance	25,327.20	49,451.60		74,778.80
<b>Total Personnel Services – Employee Benefits</b>	<b>\$111,736.51</b>	<b>\$208,443.09</b>		<b>\$320,179.60</b>
300 <u>Purchased Professional and Technical Services</u>				
322 Professional Educational Services – lus		1,749.71	138,549.00	140,298.71
329 Professional Educational Services – Other		39,356.69		39,356.69
330 Other Professional Services	2,344.06	2,793.75		5,137.81
<b>Total Purchased Professional and Technical Services</b>	<b>\$2,344.06</b>	<b>\$43,900.15</b>	<b>\$138,549.00</b>	<b>\$184,793.21</b>
400 <u>Purchased Property Services</u>				
440 Rentals		140.50		140.50
<b>Total Purchased Property Services</b>		<b>\$140.50</b>		<b>\$140.50</b>
500 <u>Other Purchased Services</u>				
510 Student Transportation Services		732.09		732.09
530 Communications	19.25	3,670.53		3,689.78
550 Printing and Binding		604.50		604.50
580 Travel		236.33		236.33
<b>Total Other Purchased Services</b>	<b>\$19.25</b>	<b>\$5,243.45</b>		<b>\$5,262.70</b>
600 <u>Supplies</u>				
610 General Supplies		8,782.88		8,782.88
640 Books and Periodicals		10,960.04		10,960.04
650 Supplies & Fees – Technology Related	16,118.56	19,298.94		35,417.50
<b>Total Supplies</b>	<b>\$16,118.56</b>	<b>\$39,041.86</b>		<b>\$55,160.42</b>
800 <u>Other Objects</u>				
810 Dues and Fees	388.00	955.00		1,343.00
<b>Total Other Objects</b>	<b>\$388.00</b>	<b>\$955.00</b>		<b>\$1,343.00</b>
<b>Total 2120 Guidance Services</b>	<b>\$333,151.38</b>	<b>\$671,995.99</b>	<b>\$138,549.00</b>	<b>\$1,143,696.37</b>

General Fund (10)

2130 Attendance Services

	<u>Elementary</u>	<u>Secondary</u>	<u>Federal</u>	<u>Total</u>
100 <u>Personnel Services – Salaries</u>				
100 Personnel Services – Salaries				46,658.34
<b>Total Personnel Services – Salaries</b>				<b>\$46,658.34</b>
200 <u>Personnel Services – Employee Benefits</u>				
210 Group Insurance – Contracted Provider				323.40
220 Social Security Contributions				3,401.55
230 PSERS Retirement Contributions				15,913.48
260 Workers' Compensation				292.88
270 Group Insurance – Self-Insurance				17,756.64
<b>Total Personnel Services – Employee Benefits</b>				<b>\$37,687.95</b>
<b>Total 2130 Attendance Services</b>				<b>\$84,346.29</b>

LEA : 113362303     Eastern Lancaster County SD

Printed 10/22/2020 7:43:46 AM

General Fund (10)

2140 Psychological Services

	Elementary	Secondary	Federal	Total
<b>100 <u>Personnel Services – Salaries</u></b>				
100 Personnel Services – Salaries	263,699.01	106,769.65		370,468.66
<b>Total Personnel Services – Salaries</b>	<b>\$263,699.01</b>	<b>\$106,769.65</b>		<b>\$370,468.66</b>
<b>200 <u>Personnel Services – Employee Benefits</u></b>				
210 Group Insurance – Contracted Provider	525.75	154.25		680.00
220 Social Security Contributions	20,135.49	8,008.76		28,144.25
230 PSERS Retirement Contributions	89,736.30	36,268.39		126,004.69
260 Workers' Compensation	1,310.46	664.50		1,974.96
270 Group Insurance – Self-Insurance	2,919.03	12,623.97		15,543.00
<b>Total Personnel Services – Employee Benefits</b>	<b>\$114,627.03</b>	<b>\$57,719.87</b>		<b>\$172,346.90</b>
<b>300 <u>Purchased Professional and Technical Services</u></b>				
322 Professional Educational Services – lus		5,944.52		5,944.52
<b>Total Purchased Professional and Technical Services</b>		<b>\$5,944.52</b>		<b>\$5,944.52</b>
<b>500 <u>Other Purchased Services</u></b>				
530 Communications	436.03	403.18		839.21
550 Printing and Binding		44.50		44.50
580 Travel	47.10			47.10
<b>Total Other Purchased Services</b>	<b>\$483.13</b>	<b>\$447.68</b>		<b>\$930.81</b>
<b>600 <u>Supplies</u></b>				
610 General Supplies	2,487.23	1,188.06		3,675.29
640 Books and Periodicals		69.55		69.55
650 Supplies & Fees – Technology Related	2,783.24	358.83		3,142.07
<b>Total Supplies</b>	<b>\$5,270.47</b>	<b>\$1,616.44</b>		<b>\$6,886.91</b>
<b>800 <u>Other Objects</u></b>				
810 Dues and Fees	485.00	285.00		770.00
<b>Total Other Objects</b>	<b>\$485.00</b>	<b>\$285.00</b>		<b>\$770.00</b>
<b>Total 2140 Psychological Services</b>	<b>\$384,564.64</b>	<b>\$172,783.16</b>		<b>\$557,347.80</b>

LEA : 113362303      Eastern Lancaster County SD

Printed 10/22/2020 7:43:46 AM

<b>General Fund (10)</b>				
<b>2160 Social Work Services</b>	<b><u>Elementary</u></b>	<b><u>Secondary</u></b>	<b><u>Federal</u></b>	<b><u>Total</u></b>
<b>100 <u>Personnel Services – Salaries</u></b>				
100 Personnel Services – Salaries				132,252.84
<b>Total Personnel Services – Salaries</b>				<b>\$132,252.84</b>
<b>200 <u>Personnel Services – Employee Benefits</u></b>				
210 Group Insurance – Contracted Provider				213.75
220 Social Security Contributions				9,714.20
230 PSERS Retirement Contributions				45,349.38
260 Workers' Compensation				831.77
270 Group Insurance – Self-Insurance				24,696.32
<b>Total Personnel Services – Employee Benefits</b>				<b>\$80,805.42</b>
<b>300 <u>Purchased Professional and Technical Services</u></b>				
330 Other Professional Services				55,040.00
<b>Total Purchased Professional and Technical Services</b>				<b>\$55,040.00</b>
<b>500 <u>Other Purchased Services</u></b>				
530 Communications				4.30
550 Printing and Binding				79.75
<b>Total Other Purchased Services</b>				<b>\$84.05</b>
<b>600 <u>Supplies</u></b>				
610 General Supplies				81.89
630 Food				22.68
<b>Total Supplies</b>				<b>\$104.57</b>
<b>Total 2160 Social Work Services</b>				<b>\$268,286.88</b>

LEA : 113362303      Eastern Lancaster County SD

Printed 10/22/2020 7:43:46 AM

General Fund (10)				
2170 Student Accounting Services	<u>Elementary</u>	<u>Secondary</u>	<u>Federal</u>	<u>Total</u>
100 <u>Personnel Services – Salaries</u>				
100 Personnel Services – Salaries				33,939.36
Total Personnel Services – Salaries				\$33,939.36
200 <u>Personnel Services – Employee Benefits</u>				
210 Group Insurance – Contracted Provider				21.95
220 Social Security Contributions				2,504.97
230 PSERS Retirement Contributions				11,293.32
260 Workers' Compensation				206.20
270 Group Insurance – Self-Insurance				7,344.56
Total Personnel Services – Employee Benefits				\$21,371.00
300 <u>Purchased Professional and Technical Services</u>				
330 Other Professional Services			72.76	5,310.10
Total Purchased Professional and Technical Services			\$72.76	\$5,310.10
500 <u>Other Purchased Services</u>				
530 Communications				10.50
580 Travel				64.67
Total Other Purchased Services				\$75.17
600 <u>Supplies</u>				
610 General Supplies				4,256.25
Total Supplies				\$4,256.25
800 <u>Other Objects</u>				
810 Dues and Fees				199.00
Total Other Objects				\$199.00
Total 2170 Student Accounting Services			\$72.76	\$65,150.88



General Fund (10)

2190 Other Student Services

	<u>Elementary</u>	<u>Secondary</u>	<u>Federal</u>	<u>Total</u>
<b>100 <u>Personnel Services – Salaries</u></b>				
100 Personnel Services – Salaries		10,531.95		10,531.95
<b>Total Personnel Services – Salaries</b>		<b>\$10,531.95</b>		<b>\$10,531.95</b>
<b>200 <u>Personnel Services – Employee Benefits</u></b>				
220 Social Security Contributions		798.71		798.71
230 PSERS Retirement Contributions		3,611.39		3,611.39
260 Workers’ Compensation		66.30		66.30
<b>Total Personnel Services – Employee Benefits</b>		<b>\$4,476.40</b>		<b>\$4,476.40</b>
<b>600 <u>Supplies</u></b>				
650 Supplies & Fees – Technology Related		500.00		500.00
<b>Total Supplies</b>		<b>\$500.00</b>		<b>\$500.00</b>
<b>Total 2190 Other Student Services</b>		<b>\$15,508.35</b>		<b>\$15,508.35</b>

LEA : 113362303      Eastern Lancaster County SD

Printed 10/22/2020 7:43:46 AM

General Fund (10)

2200 Support Services – Instructional Staff	Elementary	Secondary	Federal	Total
100 <u>Personnel Services – Salaries</u>				
100 Personnel Services – Salaries	764,272.14	785,033.90		1,549,306.04
<b>Total Personnel Services – Salaries</b>	<b>\$764,272.14</b>	<b>\$785,033.90</b>		<b>\$1,549,306.04</b>
200 <u>Personnel Services – Employee Benefits</u>				
210 Group Insurance – Contracted Provider	3,249.42	2,938.74		6,188.16
220 Social Security Contributions	56,699.23	58,044.22		114,743.45
230 PSERS Retirement Contributions	258,700.01	266,006.55		524,706.56
240 Tuition Reimbursement	199,194.63	186,885.06		386,079.69
260 Workers' Compensation	3,500.56	3,752.12		7,252.68
270 Group Insurance – Self-Insurance	107,393.86	118,564.98		225,958.84
291 Other Retirement Plans	3,101.76	3,897.99		6,999.75
<b>Total Personnel Services – Employee Benefits</b>	<b>\$631,839.47</b>	<b>\$640,089.66</b>		<b>\$1,271,929.13</b>
300 <u>Purchased Professional and Technical Services</u>				
322 Professional Educational Services – Ius	3,443.62	3,446.38		6,890.00
329 Professional Educational Services – Other	17,905.21	26,443.73		44,348.94
330 Other Professional Services	11,875.52	2,677.66		14,553.18
360 Employee Training and Development Services	27,196.50	23,930.04		51,126.54
<b>Total Purchased Professional and Technical Services</b>	<b>\$60,420.85</b>	<b>\$56,497.81</b>		<b>\$116,918.66</b>
500 <u>Other Purchased Services</u>				
530 Communications	1,132.24	1,113.99		2,246.23
550 Printing and Binding	22.49	67.01		89.50
580 Travel	11,432.43	9,593.82		21,026.25
<b>Total Other Purchased Services</b>	<b>\$12,587.16</b>	<b>\$10,774.82</b>		<b>\$23,361.98</b>
600 <u>Supplies</u>				
610 General Supplies	29,061.88	38,394.30		67,456.18
630 Food	2,837.57	2,921.06		5,758.63
640 Books and Periodicals	8,667.19	14,157.54		22,824.73
650 Supplies & Fees – Technology Related	11,055.47	27,777.92		38,833.39
<b>Total Supplies</b>	<b>\$51,622.11</b>	<b>\$83,250.82</b>		<b>\$134,872.93</b>
800 <u>Other Objects</u>				
810 Dues and Fees	5,779.29	4,626.64		10,405.93
<b>Total Other Objects</b>	<b>\$5,779.29</b>	<b>\$4,626.64</b>		<b>\$10,405.93</b>
<b>Total 2200 Support Services – Instructional Staff</b>	<b>\$1,526,521.02</b>	<b>\$1,580,273.65</b>		<b>\$3,106,794.67</b>

LEA : 113362303      Eastern Lancaster County SD

Printed 10/22/2020 7:43:46 AM

General Fund (10)

2230 Educational Television Services	<u>Elementary</u>	<u>Secondary</u>	<u>Federal</u>	<u>Total</u>
100 <u>Personnel Services – Salaries</u>				
100 Personnel Services – Salaries		2,969.98		2,969.98
<b>Total Personnel Services – Salaries</b>		<b>\$2,969.98</b>		<b>\$2,969.98</b>
200 <u>Personnel Services – Employee Benefits</u>				
220 Social Security Contributions		219.18		219.18
230 PSERS Retirement Contributions		1,018.42		1,018.42
260 Workers’ Compensation		18.71		18.71
<b>Total Personnel Services – Employee Benefits</b>		<b>\$1,256.31</b>		<b>\$1,256.31</b>
600 <u>Supplies</u>				
610 General Supplies		5,220.25		5,220.25
<b>Total Supplies</b>		<b>\$5,220.25</b>		<b>\$5,220.25</b>
<b>Total 2230 Educational Television Services</b>		<b>\$9,446.54</b>		<b>\$9,446.54</b>

LEA : 113362303     Eastern Lancaster County SD

Printed 10/22/2020 7:43:46 AM

General Fund (10)

2250 School Library Services	Elementary	Secondary	Federal	Total
100 <u>Personnel Services – Salaries</u>				
100 Personnel Services – Salaries	269,526.99	54,425.00		323,951.99
<b>Total Personnel Services – Salaries</b>	<b>\$269,526.99</b>	<b>\$54,425.00</b>		<b>\$323,951.99</b>
200 <u>Personnel Services – Employee Benefits</u>				
210 Group Insurance – Contracted Provider	752.81	186.50		939.31
220 Social Security Contributions	19,833.42	4,018.33		23,851.75
230 PSERS Retirement Contributions	89,994.97	18,662.28		108,657.25
260 Workers' Compensation	1,110.95	342.41		1,453.36
270 Group Insurance – Self-Insurance	31,199.06	7,065.86		38,264.92
<b>Total Personnel Services – Employee Benefits</b>	<b>\$142,891.21</b>	<b>\$30,275.38</b>		<b>\$173,166.59</b>
300 <u>Purchased Professional and Technical Services</u>				
329 Professional Educational Services – Other		9,871.00		9,871.00
<b>Total Purchased Professional and Technical Services</b>		<b>\$9,871.00</b>		<b>\$9,871.00</b>
500 <u>Other Purchased Services</u>				
530 Communications	19.15			19.15
<b>Total Other Purchased Services</b>	<b>\$19.15</b>			<b>\$19.15</b>
600 <u>Supplies</u>				
610 General Supplies	25,808.41	29,952.64		55,761.05
640 Books and Periodicals	4,371.91	10,939.45		15,311.36
650 Supplies & Fees – Technology Related	3,837.12	20,459.50		24,296.62
<b>Total Supplies</b>	<b>\$34,017.44</b>	<b>\$61,351.59</b>		<b>\$95,369.03</b>
800 <u>Other Objects</u>				
810 Dues and Fees	60.00	60.00		120.00
<b>Total Other Objects</b>	<b>\$60.00</b>	<b>\$60.00</b>		<b>\$120.00</b>
<b>Total 2250 School Library Services</b>	<b>\$446,514.79</b>	<b>\$155,982.97</b>		<b>\$602,497.76</b>

LEA : 113362303     Eastern Lancaster County SD

Printed 10/22/2020 7:43:46 AM

General Fund (10)

2260 Instruction and Curriculum Development Services	Elementary	Secondary	Federal	Total
<b>100 <u>Personnel Services – Salaries</u></b>				
100 Personnel Services – Salaries	465,554.36	709,089.40		1,174,643.76
<b>Total Personnel Services – Salaries</b>	<b>\$465,554.36</b>	<b>\$709,089.40</b>		<b>\$1,174,643.76</b>
<b>200 <u>Personnel Services – Employee Benefits</u></b>				
210 Group Insurance – Contracted Provider	2,496.61	2,752.24		5,248.85
220 Social Security Contributions	34,661.26	52,402.35		87,063.61
230 PSERS Retirement Contributions	158,695.36	239,965.18		398,660.54
260 Workers' Compensation	2,205.87	3,274.20		5,480.07
270 Group Insurance – Self-Insurance	76,194.80	111,499.12		187,693.92
291 Other Retirement Plans	3,101.76	3,897.99		6,999.75
<b>Total Personnel Services – Employee Benefits</b>	<b>\$277,355.66</b>	<b>\$413,791.08</b>		<b>\$691,146.74</b>
<b>300 <u>Purchased Professional and Technical Services</u></b>				
322 Professional Educational Services – Ius	2,693.92	2,696.08		5,390.00
330 Other Professional Services	1,457.57	1,458.73		2,916.30
<b>Total Purchased Professional and Technical Services</b>	<b>\$4,151.49</b>	<b>\$4,154.81</b>		<b>\$8,306.30</b>
<b>500 <u>Other Purchased Services</u></b>				
530 Communications	1,113.09	1,113.99		2,227.08
550 Printing and Binding	22.49	67.01		89.50
580 Travel	1,449.20	1,000.25		2,449.45
<b>Total Other Purchased Services</b>	<b>\$2,584.78</b>	<b>\$2,181.25</b>		<b>\$4,766.03</b>
<b>600 <u>Supplies</u></b>				
610 General Supplies	2,953.59	2,921.29		5,874.88
630 Food	2.70	121.30		124.00
640 Books and Periodicals	516.66	337.29		853.95
<b>Total Supplies</b>	<b>\$3,472.95</b>	<b>\$3,379.88</b>		<b>\$6,852.83</b>
<b>800 <u>Other Objects</u></b>				
810 Dues and Fees	34.99	35.01		70.00
<b>Total Other Objects</b>	<b>\$34.99</b>	<b>\$35.01</b>		<b>\$70.00</b>
<b>Total 2260 Instruction and Curriculum Development Services</b>	<b>\$753,154.23</b>	<b>\$1,132,631.43</b>		<b>\$1,885,785.66</b>

LEA : 113362303      Eastern Lancaster County SD

Printed 10/22/2020 7:43:46 AM

General Fund (10)

2270 Instructional Staff Professional Development Services	Elementary	Secondary	Federal	Total
<b>100 Personnel Services – Salaries</b>				
100 Personnel Services – Salaries	29,190.79	18,549.52		47,740.31
<b>Total Personnel Services – Salaries</b>	<b>\$29,190.79</b>	<b>\$18,549.52</b>		<b>\$47,740.31</b>
<b>200 Personnel Services – Employee Benefits</b>				
220 Social Security Contributions	2,204.55	1,404.36		3,608.91
230 PSERS Retirement Contributions	10,009.68	6,360.67		16,370.35
240 Tuition Reimbursement	199,194.63	186,885.06		386,079.69
260 Workers' Compensation	183.74	116.80		300.54
<b>Total Personnel Services – Employee Benefits</b>	<b>\$211,592.60</b>	<b>\$194,766.89</b>		<b>\$406,359.49</b>
<b>300 Purchased Professional and Technical Services</b>				
322 Professional Educational Services – lus	749.70	750.30		1,500.00
329 Professional Educational Services – Other	17,905.21	16,572.73		34,477.94
330 Other Professional Services	10,417.95	1,218.93		11,636.88
360 Employee Training and Development Services	27,196.50	23,930.04		51,126.54
<b>Total Purchased Professional and Technical Services</b>	<b>\$56,269.36</b>	<b>\$42,472.00</b>		<b>\$98,741.36</b>
<b>500 Other Purchased Services</b>				
580 Travel	9,983.23	8,593.57		18,576.80
<b>Total Other Purchased Services</b>	<b>\$9,983.23</b>	<b>\$8,593.57</b>		<b>\$18,576.80</b>
<b>600 Supplies</b>				
610 General Supplies	299.88	300.12		600.00
630 Food	2,834.87	2,799.76		5,634.63
640 Books and Periodicals	3,778.62	2,880.80		6,659.42
650 Supplies & Fees – Technology Related	7,218.35	7,318.42		14,536.77
<b>Total Supplies</b>	<b>\$14,131.72</b>	<b>\$13,299.10</b>		<b>\$27,430.82</b>
<b>800 Other Objects</b>				
810 Dues and Fees	5,684.30	4,531.63		10,215.93
<b>Total Other Objects</b>	<b>\$5,684.30</b>	<b>\$4,531.63</b>		<b>\$10,215.93</b>
<b>Total 2270 Instructional Staff Professional Development Services</b>	<b>\$326,852.00</b>	<b>\$282,212.71</b>		<b>\$609,064.71</b>

LEA : 113362303     Eastern Lancaster County SD

Printed 10/22/2020 7:43:46 AM

<b>General Fund (10)</b>				
<b>2300 Support Services – Administration</b>	<b><u>Elementary</u></b>	<b><u>Secondary</u></b>	<b><u>Federal</u></b>	<b><u>Total</u></b>
<b>100 <u>Personnel Services – Salaries</u></b>				
100 Personnel Services – Salaries	591,491.93	673,321.98		1,758,755.15
<b>Total Personnel Services – Salaries</b>	<b>\$591,491.93</b>	<b>\$673,321.98</b>		<b>\$1,758,755.15</b>
<b>200 <u>Personnel Services – Employee Benefits</u></b>				
210 Group Insurance – Contracted Provider	2,654.80	4,116.33		10,846.25
220 Social Security Contributions	43,954.04	49,742.80		124,681.10
230 PSERS Retirement Contributions	198,841.67	227,685.42		588,255.09
260 Workers' Compensation	2,422.98	2,796.52		7,262.49
270 Group Insurance – Self-Insurance	78,231.37	108,171.40		233,057.97
291 Other Retirement Plans	991.50	1,649.52		19,141.04
<b>Total Personnel Services – Employee Benefits</b>	<b>\$327,096.36</b>	<b>\$394,161.99</b>		<b>\$983,243.94</b>
<b>300 <u>Purchased Professional and Technical Services</u></b>				
330 Other Professional Services				151,300.18
<b>Total Purchased Professional and Technical Services</b>				<b>\$151,300.18</b>
<b>400 <u>Purchased Property Services</u></b>				
410 Cleaning Services	389.10	259.60		648.70
430 Repairs and Maintenance Services	108.37			108.37
<b>Total Purchased Property Services</b>	<b>\$497.47</b>	<b>\$259.60</b>		<b>\$757.07</b>
<b>500 <u>Other Purchased Services</u></b>				
520 Insurance – General				469.00
530 Communications	271.19	271.41		4,733.10
549 Other Advertising/Public Relations				9,226.12
550 Printing and Binding	1,990.00	6,421.20		22,344.52
580 Travel		43.50		1,158.43
<b>Total Other Purchased Services</b>	<b>\$2,261.19</b>	<b>\$6,736.11</b>		<b>\$37,931.17</b>
<b>600 <u>Supplies</u></b>				
610 General Supplies	6,156.91	19,463.35		54,588.95
620 Energy				445.66
630 Food	1,910.17	2,004.73		15,754.35
640 Books and Periodicals	55.00	458.25		2,407.68
650 Supplies & Fees – Technology Related	149.00	82.56		14,294.24
<b>Total Supplies</b>	<b>\$8,271.08</b>	<b>\$22,008.89</b>		<b>\$87,490.88</b>
<b>800 <u>Other Objects</u></b>				
810 Dues and Fees		1,869.24		25,002.86
<b>Total Other Objects</b>		<b>\$1,869.24</b>		<b>\$25,002.86</b>
<b>Total 2300 Support Services – Administration</b>	<b>\$929,618.03</b>	<b>\$1,098,357.81</b>		<b>\$3,044,481.25</b>

LEA : 113362303      Eastern Lancaster County SD

Printed 10/22/2020 7:43:46 AM

General Fund (10)				
2310 Board Services				
	<u>Elementary</u>	<u>Secondary</u>	<u>Federal</u>	<u>Total</u>
300 <u>Purchased Professional and Technical Services</u>				
330 Other Professional Services				899.00
Total Purchased Professional and Technical Services				\$899.00
500 <u>Other Purchased Services</u>				
520 Insurance – General				100.00
530 Communications				48.00
549 Other Advertising/Public Relations				9,216.12
Total Other Purchased Services				\$9,364.12
600 <u>Supplies</u>				
610 General Supplies				321.16
630 Food				1,191.15
650 Supplies & Fees – Technology Related				4,650.00
Total Supplies				\$6,162.31
800 <u>Other Objects</u>				
810 Dues and Fees				13,936.84
Total Other Objects				\$13,936.84
Total 2310 Board Services				\$30,362.27



General Fund (10)

2320 Board Treasurer Services	<u>Elementary</u>	<u>Secondary</u>	<u>Federal</u>	<u>Total</u>
300 <u>Purchased Professional and Technical Services</u>				
330 Other Professional Services				250.00
Total Purchased Professional and Technical Services				\$250.00
500 <u>Other Purchased Services</u>				
520 Insurance – General				100.00
Total Other Purchased Services				\$100.00
Total 2320 Board Treasurer Services				\$350.00

LEA : 113362303      Eastern Lancaster County SD

Printed 10/22/2020 7:43:46 AM

General Fund (10)				
2330 Tax Assessment and Collection Services	<u>Elementary</u>	<u>Secondary</u>	<u>Federal</u>	<u>Total</u>
300 <u>Purchased Professional and Technical Services</u>				
330 Other Professional Services				67,330.89
Total Purchased Professional and Technical Services				\$67,330.89
500 <u>Other Purchased Services</u>				
520 Insurance – General				269.00
530 Communications				4,142.50
550 Printing and Binding				13,006.32
Total Other Purchased Services				\$17,417.82
600 <u>Supplies</u>				
650 Supplies & Fees – Technology Related				8,897.98
Total Supplies				\$8,897.98
800 <u>Other Objects</u>				
810 Dues and Fees				915.88
Total Other Objects				\$915.88
Total 2330 Tax Assessment and Collection Services				\$94,562.57

LEA : 113362303 Eastern Lancaster County SD

Printed 10/22/2020 7:43:46 AM

General Fund (10)				
2350 Legal and Accounting Services	<u>Elementary</u>	<u>Secondary</u>	<u>Federal</u>	<u>Total</u>
300 <u>Purchased Professional and Technical Services</u>				
330 Other Professional Services				67,807.38
Total Purchased Professional and Technical Services				\$67,807.38
Total 2350 Legal and Accounting Services				\$67,807.38

LEA : 113362303      Eastern Lancaster County SD

Printed 10/22/2020 7:43:46 AM

General Fund (10)

2360 Office of the Superintendent / Executive Director Services	Elementary	Secondary	Federal	Total
100 <u>Personnel Services – Salaries</u>				
100 Personnel Services – Salaries				493,941.24
<b>Total Personnel Services – Salaries</b>				<b>\$493,941.24</b>
200 <u>Personnel Services – Employee Benefits</u>				
210 Group Insurance – Contracted Provider				4,075.12
220 Social Security Contributions				30,984.26
230 PSERS Retirement Contributions				160,109.93
260 Workers' Compensation				2,042.99
270 Group Insurance – Self-Insurance				46,655.20
291 Other Retirement Plans				16,500.02
<b>Total Personnel Services – Employee Benefits</b>				<b>\$260,367.52</b>
300 <u>Purchased Professional and Technical Services</u>				
330 Other Professional Services				14,262.91
<b>Total Purchased Professional and Technical Services</b>				<b>\$14,262.91</b>
500 <u>Other Purchased Services</u>				
530 Communications	271.19	271.41		542.60
549 Other Advertising/Public Relations				10.00
550 Printing and Binding				927.00
580 Travel				1,114.93
<b>Total Other Purchased Services</b>	<b>\$271.19</b>	<b>\$271.41</b>		<b>\$2,594.53</b>
600 <u>Supplies</u>				
610 General Supplies				19,737.80
620 Energy				445.66
630 Food				10,282.57
640 Books and Periodicals				1,894.43
650 Supplies & Fees – Technology Related				444.00
<b>Total Supplies</b>				<b>\$32,804.46</b>
800 <u>Other Objects</u>				
810 Dues and Fees				8,280.90
<b>Total Other Objects</b>				<b>\$8,280.90</b>
<b>Total 2360 Office of the Superintendent / Executive Director Services</b>	<b>\$271.19</b>	<b>\$271.41</b>		<b>\$812,251.56</b>

LEA : 113362303      Eastern Lancaster County SD

Printed 10/22/2020 7:43:46 AM

General Fund (10)

2380 Office of the Principal Services	Elementary	Secondary	Federal	Total
<b>100 Personnel Services – Salaries</b>				
100 Personnel Services – Salaries	591,491.93	673,321.98		1,264,813.91
<b>Total Personnel Services – Salaries</b>	<b>\$591,491.93</b>	<b>\$673,321.98</b>		<b>\$1,264,813.91</b>
<b>200 Personnel Services – Employee Benefits</b>				
210 Group Insurance – Contracted Provider	2,654.80	4,116.33		6,771.13
220 Social Security Contributions	43,954.04	49,742.80		93,696.84
230 PSERS Retirement Contributions	198,841.67	227,685.42		426,527.09
260 Workers' Compensation	2,422.98	2,796.52		5,219.50
270 Group Insurance – Self-Insurance	78,231.37	108,171.40		186,402.77
291 Other Retirement Plans	991.50	1,649.52		2,641.02
<b>Total Personnel Services – Employee Benefits</b>	<b>\$327,096.36</b>	<b>\$394,161.99</b>		<b>\$721,258.35</b>
<b>400 Purchased Property Services</b>				
410 Cleaning Services	389.10	259.60		648.70
430 Repairs and Maintenance Services	108.37			108.37
<b>Total Purchased Property Services</b>	<b>\$497.47</b>	<b>\$259.60</b>		<b>\$757.07</b>
<b>500 Other Purchased Services</b>				
550 Printing and Binding	1,990.00	6,421.20		8,411.20
580 Travel		43.50		43.50
<b>Total Other Purchased Services</b>	<b>\$1,990.00</b>	<b>\$6,464.70</b>		<b>\$8,454.70</b>
<b>600 Supplies</b>				
610 General Supplies	6,156.91	19,463.35		25,620.26
630 Food	1,910.17	2,004.73		3,914.90
640 Books and Periodicals	55.00	458.25		513.25
650 Supplies & Fees – Technology Related	149.00	82.56		231.56
<b>Total Supplies</b>	<b>\$8,271.08</b>	<b>\$22,008.89</b>		<b>\$30,279.97</b>
<b>800 Other Objects</b>				
810 Dues and Fees		1,869.24		1,869.24
<b>Total Other Objects</b>		<b>\$1,869.24</b>		<b>\$1,869.24</b>
<b>Total 2380 Office of the Principal Services</b>	<b>\$929,346.84</b>	<b>\$1,098,086.40</b>		<b>\$2,027,433.24</b>

General Fund (10)

2390 Other Administration Services	<u>Elementary</u>	<u>Secondary</u>	<u>Federal</u>	<u>Total</u>
200 <u>Personnel Services – Employee Benefits</u>				
230 PSERS Retirement Contributions				1,618.07
Total Personnel Services – Employee Benefits				\$1,618.07
300 <u>Purchased Professional and Technical Services</u>				
330 Other Professional Services				750.00
Total Purchased Professional and Technical Services				\$750.00
600 <u>Supplies</u>				
610 General Supplies				8,909.73
630 Food				365.73
650 Supplies & Fees – Technology Related				70.70
Total Supplies				\$9,346.16
Total 2390 Other Administration Services				\$11,714.23

LEA : 113362303      Eastern Lancaster County SD

Printed 10/22/2020 7:43:46 AM

General Fund (10)				
2400 Support Services – Pupil Health	<u>Elementary</u>	<u>Secondary</u>	<u>Federal</u>	<u>Total</u>
100 <u>Personnel Services – Salaries</u>				
100 Personnel Services – Salaries				487,735.39
Total Personnel Services – Salaries				\$487,735.39
200 <u>Personnel Services – Employee Benefits</u>				
210 Group Insurance – Contracted Provider				1,293.06
220 Social Security Contributions				36,448.99
230 PSERS Retirement Contributions				167,244.21
260 Workers' Compensation				2,117.06
270 Group Insurance – Self-Insurance				70,438.56
Total Personnel Services – Employee Benefits				\$277,541.88
300 <u>Purchased Professional and Technical Services</u>				
322 Professional Educational Services – lus				703.50
329 Professional Educational Services – Other				25,586.77
330 Other Professional Services				241,130.58
Total Purchased Professional and Technical Services				\$267,420.85
400 <u>Purchased Property Services</u>				
410 Cleaning Services				129.60
430 Repairs and Maintenance Services				550.00
440 Rentals				235.00
Total Purchased Property Services				\$914.60
500 <u>Other Purchased Services</u>				
530 Communications				1,465.50
550 Printing and Binding				239.40
580 Travel				310.22
Total Other Purchased Services				\$2,015.12
600 <u>Supplies</u>				
610 General Supplies				8,690.72
650 Supplies & Fees – Technology Related				235.98
Total Supplies				\$8,926.70
800 <u>Other Objects</u>				
810 Dues and Fees				520.00
Total Other Objects				\$520.00
Total 2400 Support Services – Pupil Health				\$1,045,074.54

LEA : 113362303 Eastern Lancaster County SD

Printed 10/22/2020 7:43:46 AM

General Fund (10)

2420 Medical Services

	<u>Elementary</u>	<u>Secondary</u>	<u>Federal</u>	<u>Total</u>
<b>100 <u>Personnel Services – Salaries</u></b>				
100 Personnel Services – Salaries				90,420.92
<b>Total Personnel Services – Salaries</b>				<b>\$90,420.92</b>
<b>200 <u>Personnel Services – Employee Benefits</u></b>				
210 Group Insurance – Contracted Provider				304.56
220 Social Security Contributions				6,705.83
230 PSERS Retirement Contributions				31,005.31
260 Workers' Compensation				372.67
270 Group Insurance – Self-Insurance				9,952.08
<b>Total Personnel Services – Employee Benefits</b>				<b>\$48,340.45</b>
<b>300 <u>Purchased Professional and Technical Services</u></b>				
322 Professional Educational Services – lus				703.50
330 Other Professional Services				157,746.38
<b>Total Purchased Professional and Technical Services</b>				<b>\$158,449.88</b>
<b>500 <u>Other Purchased Services</u></b>				
550 Printing and Binding				228.00
580 Travel				189.35
<b>Total Other Purchased Services</b>				<b>\$417.35</b>
<b>600 <u>Supplies</u></b>				
610 General Supplies				14.97
<b>Total Supplies</b>				<b>\$14.97</b>
<b>Total 2420 Medical Services</b>				<b>\$297,643.57</b>



LEA : 113362303      Eastern Lancaster County SD

Printed 10/22/2020 7:43:46 AM

General Fund (10)				
2440 Nursing Services				
	<u>Elementary</u>	<u>Secondary</u>	<u>Federal</u>	<u>Total</u>
100 <u>Personnel Services – Salaries</u>				
100 Personnel Services – Salaries				388,187.18
Total Personnel Services – Salaries				\$388,187.18
200 <u>Personnel Services – Employee Benefits</u>				
210 Group Insurance – Contracted Provider				955.96
220 Social Security Contributions				29,060.19
230 PSERS Retirement Contributions				133,109.26
260 Workers' Compensation				1,686.94
270 Group Insurance – Self-Insurance				58,341.54
Total Personnel Services – Employee Benefits				\$223,153.89
300 <u>Purchased Professional and Technical Services</u>				
329 Professional Educational Services – Other				25,586.77
330 Other Professional Services				83,384.20
Total Purchased Professional and Technical Services				\$108,970.97
400 <u>Purchased Property Services</u>				
410 Cleaning Services				129.60
430 Repairs and Maintenance Services				550.00
440 Rentals				235.00
Total Purchased Property Services				\$914.60
500 <u>Other Purchased Services</u>				
530 Communications				1,465.50
550 Printing and Binding				11.40
580 Travel				120.87
Total Other Purchased Services				\$1,597.77
600 <u>Supplies</u>				
610 General Supplies				8,675.75
650 Supplies & Fees – Technology Related				235.98
Total Supplies				\$8,911.73
800 <u>Other Objects</u>				
810 Dues and Fees				520.00
Total Other Objects				\$520.00
Total 2440 Nursing Services				\$732,256.14

General Fund (10)

2450 Nonpublic Health Services	<u>Elementary</u>	<u>Secondary</u>	<u>Federal</u>	<u>Total</u>
100 <u>Personnel Services – Salaries</u>				
100 Personnel Services – Salaries				9,127.29
Total Personnel Services – Salaries				\$9,127.29
200 <u>Personnel Services – Employee Benefits</u>				
210 Group Insurance – Contracted Provider				32.54
220 Social Security Contributions				682.97
230 PSERS Retirement Contributions				3,129.64
260 Workers' Compensation				57.45
270 Group Insurance – Self-Insurance				2,144.94
Total Personnel Services – Employee Benefits				\$6,047.54
Total 2450 Nonpublic Health Services				\$15,174.83

LEA : 113362303      Eastern Lancaster County SD

Printed 10/22/2020 7:43:46 AM

General Fund (10)				
2500 Support Services – Business	Elementary	Secondary	Federal	Total
<b>100 Personnel Services – Salaries</b>				
100 Personnel Services – Salaries				324,826.02
<b>Total Personnel Services – Salaries</b>				<b>\$324,826.02</b>
<b>200 Personnel Services – Employee Benefits</b>				
210 Group Insurance – Contracted Provider				2,020.14
220 Social Security Contributions				18,789.70
230 PSERS Retirement Contributions				109,034.28
260 Workers' Compensation				1,322.04
270 Group Insurance – Self-Insurance				49,340.64
291 Other Retirement Plans				9,200.00
<b>Total Personnel Services – Employee Benefits</b>				<b>\$189,706.80</b>
<b>300 Purchased Professional and Technical Services</b>				
330 Other Professional Services			270.48	270.48
<b>Total Purchased Professional and Technical Services</b>			<b>\$270.48</b>	<b>\$270.48</b>
<b>400 Purchased Property Services</b>				
410 Cleaning Services				1,027.70
440 Rentals				1,250.47
<b>Total Purchased Property Services</b>				<b>\$2,278.17</b>
<b>500 Other Purchased Services</b>				
530 Communications				1,877.40
549 Other Advertising/Public Relations				740.05
580 Travel				468.03
<b>Total Other Purchased Services</b>				<b>\$3,085.48</b>
<b>600 Supplies</b>				
610 General Supplies				4,704.97
640 Books and Periodicals				170.00
650 Supplies & Fees – Technology Related				15,063.90
<b>Total Supplies</b>				<b>\$19,938.87</b>
<b>800 Other Objects</b>				
810 Dues and Fees				8,090.21
<b>Total Other Objects</b>				<b>\$8,090.21</b>
<b>Total 2500 Support Services – Business</b>			<b>\$270.48</b>	<b>\$548,196.03</b>

LEA : 113362303      Eastern Lancaster County SD

Printed 10/22/2020 7:43:46 AM

General Fund (10)				
2510 Fiscal Services				
	<u>Elementary</u>	<u>Secondary</u>	<u>Federal</u>	<u>Total</u>
100 <u>Personnel Services – Salaries</u>				
100 Personnel Services – Salaries				324,826.02
Total Personnel Services – Salaries				\$324,826.02
200 <u>Personnel Services – Employee Benefits</u>				
210 Group Insurance – Contracted Provider				2,020.14
220 Social Security Contributions				18,789.70
230 PSERS Retirement Contributions				109,034.28
260 Workers' Compensation				1,322.04
270 Group Insurance – Self-Insurance				49,340.64
291 Other Retirement Plans				9,200.00
Total Personnel Services – Employee Benefits				\$189,706.80
300 <u>Purchased Professional and Technical Services</u>				
330 Other Professional Services			270.48	270.48
Total Purchased Professional and Technical Services			\$270.48	\$270.48
400 <u>Purchased Property Services</u>				
410 Cleaning Services				1,027.70
440 Rentals				1,250.47
Total Purchased Property Services				\$2,278.17
500 <u>Other Purchased Services</u>				
530 Communications				1,877.40
549 Other Advertising/Public Relations				740.05
580 Travel				468.03
Total Other Purchased Services				\$3,085.48
600 <u>Supplies</u>				
610 General Supplies				4,704.97
640 Books and Periodicals				170.00
650 Supplies & Fees – Technology Related				15,063.90
Total Supplies				\$19,938.87
800 <u>Other Objects</u>				
810 Dues and Fees				8,090.21
Total Other Objects				\$8,090.21
Total 2510 Fiscal Services			\$270.48	\$548,196.03

LEA : 113362303      Eastern Lancaster County SD

Printed 10/22/2020 7:43:46 AM

General Fund (10)				
2511 Supervision of Fiscal Services - Head of Component	<u>Elementary</u>	<u>Secondary</u>	<u>Federal</u>	<u>Total</u>
100 <u>Personnel Services – Salaries</u>				
100 Personnel Services – Salaries				228,862.18
Total Personnel Services – Salaries				\$228,862.18
200 <u>Personnel Services – Employee Benefits</u>				
210 Group Insurance – Contracted Provider				1,702.24
220 Social Security Contributions				12,004.25
230 PSERS Retirement Contributions				76,109.75
260 Workers' Compensation				943.38
270 Group Insurance – Self-Insurance				17,756.64
291 Other Retirement Plans				9,200.00
Total Personnel Services – Employee Benefits				\$117,716.26
400 <u>Purchased Property Services</u>				
410 Cleaning Services				1,027.70
440 Rentals				1,250.47
Total Purchased Property Services				\$2,278.17
500 <u>Other Purchased Services</u>				
530 Communications				1,877.40
580 Travel				441.19
Total Other Purchased Services				\$2,318.59
600 <u>Supplies</u>				
610 General Supplies				4,464.15
640 Books and Periodicals				170.00
650 Supplies & Fees – Technology Related				336.96
Total Supplies				\$4,971.11
800 <u>Other Objects</u>				
810 Dues and Fees				5,663.27
Total Other Objects				\$5,663.27
Total 2511 Supervision of Fiscal Services - Head of Component				\$361,809.58

General Fund (10)

2514 Payroll Services

<u>Elementary</u>	<u>Secondary</u>	<u>Federal</u>	<u>Total</u>
-------------------	------------------	----------------	--------------

600 <u>Supplies</u>			
650 Supplies & Fees – Technology Related			5,498.99
Total Supplies			\$5,498.99
800 <u>Other Objects</u>			
810 Dues and Fees			1,245.46
Total Other Objects			\$1,245.46
Total 2514 Payroll Services			\$6,744.45

LEA : 113362303     Eastern Lancaster County SD

Printed 10/22/2020 7:43:46 AM

General Fund (10)				
2515 Financial Accounting Services	<u>Elementary</u>	<u>Secondary</u>	<u>Federal</u>	<u>Total</u>
100 <u>Personnel Services – Salaries</u>				
100 Personnel Services – Salaries				95,963.84
Total Personnel Services – Salaries				\$95,963.84
200 <u>Personnel Services – Employee Benefits</u>				
210 Group Insurance – Contracted Provider				317.90
220 Social Security Contributions				6,785.45
230 PSERS Retirement Contributions				32,924.53
260 Workers' Compensation				378.66
270 Group Insurance – Self-Insurance				31,584.00
Total Personnel Services – Employee Benefits				\$71,990.54
300 <u>Purchased Professional and Technical Services</u>				
330 Other Professional Services			270.48	270.48
Total Purchased Professional and Technical Services			\$270.48	\$270.48
500 <u>Other Purchased Services</u>				
580 Travel				26.84
Total Other Purchased Services				\$26.84
600 <u>Supplies</u>				
610 General Supplies				240.82
650 Supplies & Fees – Technology Related				4,478.96
Total Supplies				\$4,719.78
Total 2515 Financial Accounting Services			\$270.48	\$172,971.48

LEA : 113362303 Eastern Lancaster County SD

Printed 10/22/2020 7:43:46 AM

General Fund (10)

2517 Property Accounting Services	<u>Elementary</u>	<u>Secondary</u>	<u>Federal</u>	<u>Total</u>
600 <u>Supplies</u>				
650 Supplies & Fees – Technology Related				4,448.99
Total Supplies				\$4,448.99
Total 2517 Property Accounting Services				\$4,448.99



General Fund (10)

2519 Other Fiscal Services	<u>Elementary</u>	<u>Secondary</u>	<u>Federal</u>	<u>Total</u>
500 <u>Other Purchased Services</u>				
549 Other Advertising/Public Relations				740.05
Total Other Purchased Services				\$740.05
600 <u>Supplies</u>				
650 Supplies & Fees – Technology Related				300.00
Total Supplies				\$300.00
800 <u>Other Objects</u>				
810 Dues and Fees				1,181.48
Total Other Objects				\$1,181.48
Total 2519 Other Fiscal Services				\$2,221.53

LEA : 113362303      Eastern Lancaster County SD

Printed 10/22/2020 7:43:46 AM

<b>General Fund (10)</b>				
<b>2600 Operation and Maintenance of Plant Services</b>	<b><u>Elementary</u></b>	<b><u>Secondary</u></b>	<b><u>Federal</u></b>	<b><u>Total</u></b>
<b>100 <u>Personnel Services – Salaries</u></b>				
100 Personnel Services – Salaries				686,083.63
<b>Total Personnel Services – Salaries</b>				<b>\$686,083.63</b>
<b>200 <u>Personnel Services – Employee Benefits</u></b>				
210 Group Insurance – Contracted Provider				2,741.84
220 Social Security Contributions				50,846.92
230 PSERS Retirement Contributions				234,572.24
260 Workers' Compensation				3,332.02
270 Group Insurance – Self-Insurance				119,911.20
291 Other Retirement Plans				6,614.70
<b>Total Personnel Services – Employee Benefits</b>				<b>\$418,018.92</b>
<b>300 <u>Purchased Professional and Technical Services</u></b>				
330 Other Professional Services				77,822.00
350 Security / Safety Services				5,564.00
390 Other Purchased Professional and Technical Services				17,264.70
<b>Total Purchased Professional and Technical Services</b>				<b>\$100,650.70</b>
<b>400 <u>Purchased Property Services</u></b>				
410 Cleaning Services				727,093.07
420 Utility Services				56,520.25
430 Repairs and Maintenance Services				404,114.39
440 Rentals				13,530.00
460 Extermination Services				5,433.00
<b>Total Purchased Property Services</b>				<b>\$1,206,690.71</b>
<b>500 <u>Other Purchased Services</u></b>				
523 General Property and Liability Insurance				151,246.00
530 Communications				31.47
580 Travel				7.10
<b>Total Other Purchased Services</b>				<b>\$151,284.57</b>
<b>600 <u>Supplies</u></b>				
610 General Supplies	165,384.66	174,154.67	6,791.99	346,331.32
620 Energy				743,006.03
630 Food				110.08
650 Supplies & Fees – Technology Related				6,201.50
<b>Total Supplies</b>	<b>\$165,384.66</b>	<b>\$174,154.67</b>	<b>\$6,791.99</b>	<b>\$1,095,648.93</b>
<b>700 <u>Property</u></b>				
752 Capital Equipment – Original and Additional				44,348.00
762 Capitalized Equipment - Replacement				505,419.00
<b>Total Property</b>				<b>\$549,767.00</b>
<b>800 <u>Other Objects</u></b>				
810 Dues and Fees				2,362.41
<b>Total Other Objects</b>				<b>\$2,362.41</b>
<b>Total 2600 Operation and Maintenance of Plant Services</b>	<b>\$165,384.66</b>	<b>\$174,154.67</b>	<b>\$6,791.99</b>	<b>\$4,210,506.87</b>

LEA : 113362303     Eastern Lancaster County SD

Printed 10/22/2020 7:43:46 AM

General Fund (10)				
2610 Supervision of Operation and Maintenance of Plant Services	<u>Elementary</u>	<u>Secondary</u>	<u>Federal</u>	<u>Total</u>
100 <u>Personnel Services – Salaries</u>				
100 Personnel Services – Salaries				137,198.73
<b>Total Personnel Services – Salaries</b>				<b>\$137,198.73</b>
200 <u>Personnel Services – Employee Benefits</u>				
210 Group Insurance – Contracted Provider				681.12
220 Social Security Contributions				10,279.97
230 PSERS Retirement Contributions				46,702.44
260 Workers' Compensation				565.12
270 Group Insurance – Self-Insurance				11,943.84
291 Other Retirement Plans				6,614.70
<b>Total Personnel Services – Employee Benefits</b>				<b>\$76,787.19</b>
500 <u>Other Purchased Services</u>				
530 Communications				31.47
580 Travel				7.10
<b>Total Other Purchased Services</b>				<b>\$38.57</b>
600 <u>Supplies</u>				
610 General Supplies	98.99	99.06		198.05
630 Food				100.08
<b>Total Supplies</b>	<b>\$98.99</b>	<b>\$99.06</b>		<b>\$298.13</b>
800 <u>Other Objects</u>				
810 Dues and Fees				250.00
<b>Total Other Objects</b>				<b>\$250.00</b>
<b>Total 2610 Supervision of Operation and Maintenance of Plant Services</b>	<b>\$98.99</b>	<b>\$99.06</b>		<b>\$214,572.62</b>

LEA : 113362303      Eastern Lancaster County SD

Printed 10/22/2020 7:43:46 AM

General Fund (10)				
2611 Supervision of Operation and Maintenance of Plant Services – Head of Component	<u>Elementary</u>	<u>Secondary</u>	<u>Federal</u>	<u>Total</u>
100 <u>Personnel Services – Salaries</u>				
100 Personnel Services – Salaries				137,198.73
<b>Total Personnel Services – Salaries</b>				<b>\$137,198.73</b>
200 <u>Personnel Services – Employee Benefits</u>				
210 Group Insurance – Contracted Provider				681.12
220 Social Security Contributions				10,279.97
230 PSERS Retirement Contributions				46,702.44
260 Workers' Compensation				565.12
270 Group Insurance – Self-Insurance				11,943.84
291 Other Retirement Plans				6,614.70
<b>Total Personnel Services – Employee Benefits</b>				<b>\$76,787.19</b>
500 <u>Other Purchased Services</u>				
530 Communications				31.47
580 Travel				7.10
<b>Total Other Purchased Services</b>				<b>\$38.57</b>
600 <u>Supplies</u>				
610 General Supplies	98.99	99.06		198.05
630 Food				100.08
<b>Total Supplies</b>	<b>\$98.99</b>	<b>\$99.06</b>		<b>\$298.13</b>
800 <u>Other Objects</u>				
810 Dues and Fees				250.00
<b>Total Other Objects</b>				<b>\$250.00</b>
<b>Total 2611 Supervision of Operation and Maintenance of Plant Services – Head of Component</b>	<b>\$98.99</b>	<b>\$99.06</b>		<b>\$214,572.62</b>

LEA : 113362303     Eastern Lancaster County SD

Printed 10/22/2020 7:43:46 AM

<b>General Fund (10)</b>				
<b>2620 Operation of Buildings Services</b>	<b><u>Elementary</u></b>	<b><u>Secondary</u></b>	<b><u>Federal</u></b>	<b><u>Total</u></b>
<b>100 <u>Personnel Services – Salaries</u></b>				
100 Personnel Services – Salaries				486,820.68
<b>Total Personnel Services – Salaries</b>				<b>\$486,820.68</b>
<b>200 <u>Personnel Services – Employee Benefits</u></b>				
210 Group Insurance – Contracted Provider				1,062.16
220 Social Security Contributions				35,896.82
230 PSERS Retirement Contributions				166,588.09
260 Workers' Compensation				2,387.18
270 Group Insurance – Self-Insurance				100,396.80
<b>Total Personnel Services – Employee Benefits</b>				<b>\$306,331.05</b>
<b>300 <u>Purchased Professional and Technical Services</u></b>				
390 Other Purchased Professional and Technical Services				17,264.70
<b>Total Purchased Professional and Technical Services</b>				<b>\$17,264.70</b>
<b>400 <u>Purchased Property Services</u></b>				
410 Cleaning Services				575,518.07
420 Utility Services				56,232.35
430 Repairs and Maintenance Services				161,415.11
440 Rentals				5,194.80
460 Extermination Services				5,433.00
<b>Total Purchased Property Services</b>				<b>\$803,793.33</b>
<b>500 <u>Other Purchased Services</u></b>				
523 General Property and Liability Insurance				151,246.00
<b>Total Other Purchased Services</b>				<b>\$151,246.00</b>
<b>600 <u>Supplies</u></b>				
610 General Supplies	140,724.42	129,381.33	6,791.99	276,897.74
620 Energy				743,006.03
<b>Total Supplies</b>	<b>\$140,724.42</b>	<b>\$129,381.33</b>	<b>\$6,791.99</b>	<b>\$1,019,903.77</b>
<b>700 <u>Property</u></b>				
752 Capital Equipment – Original and Additional				4,814.00
762 Capitalized Equipment - Replacement				494,419.00
<b>Total Property</b>				<b>\$499,233.00</b>
<b>800 <u>Other Objects</u></b>				
810 Dues and Fees				1,034.50
<b>Total Other Objects</b>				<b>\$1,034.50</b>
<b>Total 2620 Operation of Buildings Services</b>	<b>\$140,724.42</b>	<b>\$129,381.33</b>	<b>\$6,791.99</b>	<b>\$3,285,627.03</b>

LEA : 113362303 Eastern Lancaster County SD

Printed 10/22/2020 7:43:46 AM

General Fund (10)

2630 Care and Upkeep of Grounds Services	<u>Elementary</u>	<u>Secondary</u>	<u>Federal</u>	<u>Total</u>
100 <u>Personnel Services – Salaries</u>				
100 Personnel Services – Salaries				62,064.22
Total Personnel Services – Salaries				\$62,064.22
200 <u>Personnel Services – Employee Benefits</u>				
210 Group Insurance – Contracted Provider				998.56
220 Social Security Contributions				4,670.13
230 PSERS Retirement Contributions				21,281.71
260 Workers' Compensation				379.72
270 Group Insurance – Self-Insurance				7,570.56
Total Personnel Services – Employee Benefits				\$34,900.68
400 <u>Purchased Property Services</u>				
410 Cleaning Services				151,575.00
430 Repairs and Maintenance Services				7,446.74
Total Purchased Property Services				\$159,021.74
600 <u>Supplies</u>				
610 General Supplies	7,108.75	32,987.08		40,095.83
Total Supplies	\$7,108.75	\$32,987.08		\$40,095.83
Total 2630 Care and Upkeep of Grounds Services	\$7,108.75	\$32,987.08		\$296,082.47

LEA : 113362303 Eastern Lancaster County SD

Printed 10/22/2020 7:43:46 AM

General Fund (10)

2640 Care and Upkeep of Equipment Services	<u>Elementary</u>	<u>Secondary</u>	<u>Federal</u>	<u>Total</u>
400 <u>Purchased Property Services</u>				
430 Repairs and Maintenance Services				204,538.46
440 Rentals				8,335.20
Total Purchased Property Services				\$212,873.66
600 <u>Supplies</u>				
610 General Supplies	2,275.79	1,140.32		3,416.11
Total Supplies	\$2,275.79	\$1,140.32		\$3,416.11
700 <u>Property</u>				
762 Capitalized Equipment - Replacement				11,000.00
Total Property				\$11,000.00
800 <u>Other Objects</u>				
810 Dues and Fees				1,059.91
Total Other Objects				\$1,059.91
Total 2640 Care and Upkeep of Equipment Services	\$2,275.79	\$1,140.32		\$228,349.68

LEA : 113362303      Eastern Lancaster County SD

Printed 10/22/2020 7:43:46 AM

General Fund (10)				
2650 Vehicle Operation and Maintenance Services (Other Than Student Transportation Vehicles)	<u>Elementary</u>	<u>Secondary</u>	<u>Federal</u>	<u>Total</u>
400 <u>Purchased Property Services</u>				
420 Utility Services				287.90
430 Repairs and Maintenance Services				20,548.54
<b>Total Purchased Property Services</b>				<b>\$20,836.44</b>
600 <u>Supplies</u>				
610 General Supplies	473.51	473.89		947.40
<b>Total Supplies</b>	<b>\$473.51</b>	<b>\$473.89</b>		<b>\$947.40</b>
700 <u>Property</u>				
752 Capital Equipment – Original and Additional				39,534.00
<b>Total Property</b>				<b>\$39,534.00</b>
800 <u>Other Objects</u>				
810 Dues and Fees				18.00
<b>Total Other Objects</b>				<b>\$18.00</b>
<b>Total 2650 Vehicle Operation and Maintenance Services (Other Than Student Transportation Vehicles)</b>	<b>\$473.51</b>	<b>\$473.89</b>		<b>\$61,335.84</b>



LEA : 113362303      Eastern Lancaster County SD

Printed 10/22/2020 7:43:46 AM

General Fund (10)				
2660 Safety and Security Services	<u>Elementary</u>	<u>Secondary</u>	<u>Federal</u>	<u>Total</u>
300 <u>Purchased Professional and Technical Services</u>				
330 Other Professional Services				71,067.00
350 Security / Safety Services				5,564.00
Total Purchased Professional and Technical Services				\$76,631.00
400 <u>Purchased Property Services</u>				
430 Repairs and Maintenance Services				10,165.54
Total Purchased Property Services				\$10,165.54
600 <u>Supplies</u>				
610 General Supplies	14,703.20	10,072.99		24,776.19
630 Food				10.00
650 Supplies & Fees – Technology Related				6,201.50
Total Supplies	\$14,703.20	\$10,072.99		\$30,987.69
Total 2660 Safety and Security Services	\$14,703.20	\$10,072.99		\$117,784.23

LEA : 113362303     Eastern Lancaster County SD

Printed 10/22/2020 7:43:46 AM

General Fund (10)

2690 Other Operation and Maintenance of Plant Services	<u>Elementary</u>	<u>Secondary</u>	<u>Federal</u>	<u>Total</u>
300 <u>Purchased Professional and Technical Services</u>				
330 Other Professional Services				6,755.00
Total Purchased Professional and Technical Services				\$6,755.00
Total 2690 Other Operation and Maintenance of Plant Services				\$6,755.00

LEA : 113362303     Eastern Lancaster County SD

Printed 10/22/2020 7:43:46 AM

General Fund (10)				
2700 Student Transportation Services	<u>Elementary</u>	<u>Secondary</u>	<u>Federal</u>	<u>Total</u>
100 <u>Personnel Services – Salaries</u>				
100 Personnel Services – Salaries				85,943.89
Total Personnel Services – Salaries				\$85,943.89
200 <u>Personnel Services – Employee Benefits</u>				
210 Group Insurance – Contracted Provider				245.40
220 Social Security Contributions				6,274.63
230 PSERS Retirement Contributions				29,470.20
260 Workers' Compensation				352.85
270 Group Insurance – Self-Insurance				11,355.84
Total Personnel Services – Employee Benefits				\$47,698.92
300 <u>Purchased Professional and Technical Services</u>				
330 Other Professional Services				203,689.00
390 Other Purchased Professional and Technical Services				11,995.76
Total Purchased Professional and Technical Services				\$215,684.76
400 <u>Purchased Property Services</u>				
430 Repairs and Maintenance Services				11,709.05
Total Purchased Property Services				\$11,709.05
500 <u>Other Purchased Services</u>				
513 Contracted Carriers				2,152,874.68
516 Student Transportation Services From the IU				26,561.40
530 Communications				814.65
Total Other Purchased Services				\$2,180,250.73
600 <u>Supplies</u>				
610 General Supplies				523.77
620 Energy				35,470.25
650 Supplies & Fees – Technology Related				6,773.67
Total Supplies				\$42,767.69
800 <u>Other Objects</u>				
810 Dues and Fees				14.00
Total Other Objects				\$14.00
Total 2700 Student Transportation Services				\$2,584,069.04

LEA : 113362303      Eastern Lancaster County SD

Printed 10/22/2020 7:43:46 AM

General Fund (10)				
2710 Supervision of Student Transportation Services	<u>Elementary</u>	<u>Secondary</u>	<u>Federal</u>	<u>Total</u>
100 <u>Personnel Services – Salaries</u>				
100 Personnel Services – Salaries				85,943.89
Total Personnel Services – Salaries				\$85,943.89
200 <u>Personnel Services – Employee Benefits</u>				
210 Group Insurance – Contracted Provider				245.40
220 Social Security Contributions				6,274.63
230 PSERS Retirement Contributions				29,470.20
260 Workers' Compensation				352.85
270 Group Insurance – Self-Insurance				11,355.84
Total Personnel Services – Employee Benefits				\$47,698.92
400 <u>Purchased Property Services</u>				
430 Repairs and Maintenance Services				837.81
Total Purchased Property Services				\$837.81
500 <u>Other Purchased Services</u>				
530 Communications				814.65
Total Other Purchased Services				\$814.65
600 <u>Supplies</u>				
610 General Supplies				118.03
Total Supplies				\$118.03
800 <u>Other Objects</u>				
810 Dues and Fees				14.00
Total Other Objects				\$14.00
Total 2710 Supervision of Student Transportation Services				\$135,427.30

LEA : 113362303     Eastern Lancaster County SD

Printed 10/22/2020 7:43:46 AM

General Fund (10)				
2711 Supervision of Student Transportation Services – Head of Component	<u>Elementary</u>	<u>Secondary</u>	<u>Federal</u>	<u>Total</u>
100 <u>Personnel Services – Salaries</u>				
100 Personnel Services – Salaries				85,943.89
Total Personnel Services – Salaries				\$85,943.89
200 <u>Personnel Services – Employee Benefits</u>				
210 Group Insurance – Contracted Provider				245.40
220 Social Security Contributions				6,274.63
230 PSERS Retirement Contributions				29,470.20
260 Workers' Compensation				352.85
270 Group Insurance – Self-Insurance				11,355.84
Total Personnel Services – Employee Benefits				\$47,698.92
400 <u>Purchased Property Services</u>				
430 Repairs and Maintenance Services				837.81
Total Purchased Property Services				\$837.81
500 <u>Other Purchased Services</u>				
530 Communications				814.65
Total Other Purchased Services				\$814.65
600 <u>Supplies</u>				
610 General Supplies				118.03
Total Supplies				\$118.03
800 <u>Other Objects</u>				
810 Dues and Fees				14.00
Total Other Objects				\$14.00
Total 2711 Supervision of Student Transportation Services – Head of Component				\$135,427.30

LEA : 113362303     Eastern Lancaster County SD

Printed 10/22/2020 7:43:46 AM

General Fund (10)				
2720 Vehicle Operation Services	<u>Elementary</u>	<u>Secondary</u>	<u>Federal</u>	<u>Total</u>
300 <u>Purchased Professional and Technical Services</u>				
330 Other Professional Services				203,689.00
390 Other Purchased Professional and Technical Services				11,995.76
Total Purchased Professional and Technical Services				\$215,684.76
400 <u>Purchased Property Services</u>				
430 Repairs and Maintenance Services				10,871.24
Total Purchased Property Services				\$10,871.24
500 <u>Other Purchased Services</u>				
513 Contracted Carriers				1,706,285.64
516 Student Transportation Services From the IU				26,561.40
Total Other Purchased Services				\$1,732,847.04
600 <u>Supplies</u>				
610 General Supplies				405.74
620 Energy				35,470.25
650 Supplies & Fees – Technology Related				6,773.67
Total Supplies				\$42,649.66
Total 2720 Vehicle Operation Services				\$2,002,052.70

General Fund (10)

2750 Nonpublic Transportation	<u>Elementary</u>	<u>Secondary</u>	<u>Federal</u>	<u>Total</u>
500 <u>Other Purchased Services</u>				
513 Contracted Carriers				446,589.04
Total Other Purchased Services				\$446,589.04
Total 2750 Nonpublic Transportation				\$446,589.04

LEA : 113362303      Eastern Lancaster County SD

Printed 10/22/2020 7:43:46 AM

<b>General Fund (10)</b>				
<b>2800 Support Services – Central</b>	<b><u>Elementary</u></b>	<b><u>Secondary</u></b>	<b><u>Federal</u></b>	<b><u>Total</u></b>
<b>100 <u>Personnel Services – Salaries</u></b>				
100 Personnel Services – Salaries				1,024,560.28
<b>Total Personnel Services – Salaries</b>				<b>\$1,024,560.28</b>
<b>200 <u>Personnel Services – Employee Benefits</u></b>				
210 Group Insurance – Contracted Provider				3,681.75
220 Social Security Contributions				75,119.50
230 PSERS Retirement Contributions				344,523.41
240 Tuition Reimbursement				59,664.13
260 Workers' Compensation				4,221.74
270 Group Insurance – Self-Insurance				187,559.12
291 Other Retirement Plans				3,075.00
<b>Total Personnel Services – Employee Benefits</b>				<b>\$677,844.65</b>
<b>300 <u>Purchased Professional and Technical Services</u></b>				
330 Other Professional Services				26,768.25
340 Technical Services				38,806.69
360 Employee Training and Development Services				23,299.66
<b>Total Purchased Professional and Technical Services</b>				<b>\$88,874.60</b>
<b>400 <u>Purchased Property Services</u></b>				
430 Repairs and Maintenance Services				90,887.46
440 Rentals				56.00
<b>Total Purchased Property Services</b>				<b>\$90,943.46</b>
<b>500 <u>Other Purchased Services</u></b>				
530 Communications				138,055.97
549 Other Advertising/Public Relations				2,080.24
550 Printing and Binding				12,070.00
580 Travel				17,400.28
<b>Total Other Purchased Services</b>				<b>\$169,606.49</b>
<b>600 <u>Supplies</u></b>				
610 General Supplies				106,894.61
630 Food				94.74
640 Books and Periodicals				224.80
650 Supplies & Fees – Technology Related			42,426.51	754,192.34
<b>Total Supplies</b>			<b>\$42,426.51</b>	<b>\$861,406.49</b>
<b>700 <u>Property</u></b>				
756 Capitalized Technology Equipment – Original				195,771.28
766 Capitalized Technology Equipment – Replacement				144,807.10
<b>Total Property</b>				<b>\$340,578.38</b>
<b>800 <u>Other Objects</u></b>				
810 Dues and Fees				4,122.70
<b>Total Other Objects</b>				<b>\$4,122.70</b>
<b>Total 2800 Support Services – Central</b>			<b>\$42,426.51</b>	<b>\$3,257,937.05</b>



LEA : 113362303 Eastern Lancaster County SD

Printed 10/22/2020 7:43:46 AM

General Fund (10)

2810 Planning, Research, Development and Evaluation Services

Elementary                      Secondary                      Federal                      Total

<b>100 Personnel Services – Salaries</b>				
100 Personnel Services – Salaries				738,072.78
<b>Total Personnel Services – Salaries</b>				<b>\$738,072.78</b>
<b>200 Personnel Services – Employee Benefits</b>				
210 Group Insurance – Contracted Provider				2,617.65
220 Social Security Contributions				54,312.84
230 PSERS Retirement Contributions				247,448.87
260 Workers' Compensation				3,038.01
270 Group Insurance – Self-Insurance				153,119.84
<b>Total Personnel Services – Employee Benefits</b>				<b>\$460,537.21</b>
<b>300 Purchased Professional and Technical Services</b>				
340 Technical Services				38,806.69
<b>Total Purchased Professional and Technical Services</b>				<b>\$38,806.69</b>
<b>400 Purchased Property Services</b>				
430 Repairs and Maintenance Services				90,887.46
440 Rentals				56.00
<b>Total Purchased Property Services</b>				<b>\$90,943.46</b>
<b>500 Other Purchased Services</b>				
530 Communications				135,480.74
549 Other Advertising/Public Relations				1,135.74
580 Travel				180.94
<b>Total Other Purchased Services</b>				<b>\$136,797.42</b>
<b>600 Supplies</b>				
610 General Supplies				103,257.37
650 Supplies & Fees – Technology Related			42,426.51	740,340.49
<b>Total Supplies</b>			<b>\$42,426.51</b>	<b>\$843,597.86</b>
<b>700 Property</b>				
756 Capitalized Technology Equipment – Original				195,771.28
766 Capitalized Technology Equipment – Replacement				144,807.10
<b>Total Property</b>				<b>\$340,578.38</b>
<b>800 Other Objects</b>				
810 Dues and Fees				2,391.20
<b>Total Other Objects</b>				<b>\$2,391.20</b>
<b>Total 2810 Planning, Research, Development and Evaluation Services</b>			<b>\$42,426.51</b>	<b>\$2,651,725.00</b>

LEA : 113362303 Eastern Lancaster County SD

Printed 10/22/2020 7:43:46 AM

General Fund (10)

2820 Information Services

Elementary                      Secondary                      Federal                      Total

500 Other Purchased Services

530 Communications 2,575.23

550 Printing and Binding 12,070.00

**Total Other Purchased Services \$14,645.23**

**Total 2820 Information Services \$14,645.23**

LEA : 113362303 Eastern Lancaster County SD

Printed 10/22/2020 7:43:46 AM

General Fund (10)

2823 Public Information Services

Elementary                      Secondary                      Federal                      Total

500 Other Purchased Services

530 Communications 2,575.23

550 Printing and Binding 12,070.00

**Total Other Purchased Services \$14,645.23**

**Total 2823 Public Information Services \$14,645.23**

LEA : 113362303      Eastern Lancaster County SD

Printed 10/22/2020 7:43:46 AM

<b>General Fund (10)</b>				
<b>2830 Staff Services</b>	<u>Elementary</u>	<u>Secondary</u>	<u>Federal</u>	<u>Total</u>
<b>100 <u>Personnel Services – Salaries</u></b>				
100 Personnel Services – Salaries				286,487.50
<b>Total Personnel Services – Salaries</b>				<b>\$286,487.50</b>
<b>200 <u>Personnel Services – Employee Benefits</u></b>				
210 Group Insurance – Contracted Provider				1,064.10
220 Social Security Contributions				20,806.66
230 PSERS Retirement Contributions				97,074.54
240 Tuition Reimbursement				59,664.13
260 Workers' Compensation				1,183.73
270 Group Insurance – Self-Insurance				34,439.28
291 Other Retirement Plans				3,075.00
<b>Total Personnel Services – Employee Benefits</b>				<b>\$217,307.44</b>
<b>300 <u>Purchased Professional and Technical Services</u></b>				
330 Other Professional Services				26,768.25
360 Employee Training and Development Services				23,299.66
<b>Total Purchased Professional and Technical Services</b>				<b>\$50,067.91</b>
<b>500 <u>Other Purchased Services</u></b>				
549 Other Advertising/Public Relations				944.50
580 Travel				17,219.34
<b>Total Other Purchased Services</b>				<b>\$18,163.84</b>
<b>600 <u>Supplies</u></b>				
610 General Supplies				3,637.24
630 Food				94.74
640 Books and Periodicals				224.80
650 Supplies & Fees – Technology Related				13,851.85
<b>Total Supplies</b>				<b>\$17,808.63</b>
<b>800 <u>Other Objects</u></b>				
810 Dues and Fees				1,731.50
<b>Total Other Objects</b>				<b>\$1,731.50</b>
<b>Total 2830 Staff Services</b>				<b>\$591,566.82</b>

LEA : 113362303      Eastern Lancaster County SD

Printed 10/22/2020 7:43:46 AM

General Fund (10)				
2831 Supervision of Staff Services	<u>Elementary</u>	<u>Secondary</u>	<u>Federal</u>	<u>Total</u>
100 <u>Personnel Services – Salaries</u>				
100 Personnel Services – Salaries				279,353.46
Total Personnel Services – Salaries				\$279,353.46
200 <u>Personnel Services – Employee Benefits</u>				
210 Group Insurance – Contracted Provider				1,064.10
220 Social Security Contributions				20,271.06
230 PSERS Retirement Contributions				95,142.64
260 Workers' Compensation				1,138.86
270 Group Insurance – Self-Insurance				34,439.28
291 Other Retirement Plans				3,075.00
Total Personnel Services – Employee Benefits				\$155,130.94
300 <u>Purchased Professional and Technical Services</u>				
330 Other Professional Services				10,051.10
Total Purchased Professional and Technical Services				\$10,051.10
500 <u>Other Purchased Services</u>				
580 Travel				23.78
Total Other Purchased Services				\$23.78
600 <u>Supplies</u>				
650 Supplies & Fees – Technology Related				4,773.99
Total Supplies				\$4,773.99
800 <u>Other Objects</u>				
810 Dues and Fees				1,384.00
Total Other Objects				\$1,384.00
Total 2831 Supervision of Staff Services				\$450,717.27

LEA : 113362303 Eastern Lancaster County SD

Printed 10/22/2020 7:43:46 AM

General Fund (10)

2832 Recruitment and Placement Services	<u>Elementary</u>	<u>Secondary</u>	<u>Federal</u>	<u>Total</u>
300 <u>Purchased Professional and Technical Services</u>				
330 Other Professional Services				710.00
Total Purchased Professional and Technical Services				\$710.00
500 <u>Other Purchased Services</u>				
549 Other Advertising/Public Relations				944.50
Total Other Purchased Services				\$944.50
600 <u>Supplies</u>				
650 Supplies & Fees – Technology Related				2,900.00
Total Supplies				\$2,900.00
800 <u>Other Objects</u>				
810 Dues and Fees				322.50
Total Other Objects				\$322.50
Total 2832 Recruitment and Placement Services				\$4,877.00

LEA : 113362303 Eastern Lancaster County SD

Printed 10/22/2020 7:43:46 AM

General Fund (10)

2833 Staff Accounting Services

<u>Elementary</u>	<u>Secondary</u>	<u>Federal</u>	<u>Total</u>
-------------------	------------------	----------------	--------------

600 Supplies

650 Supplies & Fees – Technology Related			5,552.86
--	--	--	----------

<b>Total Supplies</b>			<b>\$5,552.86</b>
-----------------------	--	--	-------------------

<b>Total 2833 Staff Accounting Services</b>			<b>\$5,552.86</b>
---	--	--	-------------------

LEA : 113362303 Eastern Lancaster County SD

Printed 10/22/2020 7:43:46 AM

General Fund (10)

2834 Staff Development Services – Non-Instructional, Certified Staff Only	<u>Elementary</u>	<u>Secondary</u>	<u>Federal</u>	<u>Total</u>
100 <u>Personnel Services – Salaries</u>				
100 Personnel Services – Salaries				231.00
Total Personnel Services – Salaries				\$231.00
200 <u>Personnel Services – Employee Benefits</u>				
220 Social Security Contributions				17.67
230 PSERS Retirement Contributions				79.22
240 Tuition Reimbursement				59,664.13
260 Workers' Compensation				1.47
Total Personnel Services – Employee Benefits				\$59,762.49
300 <u>Purchased Professional and Technical Services</u>				
360 Employee Training and Development Services				11,883.11
Total Purchased Professional and Technical Services				\$11,883.11
500 <u>Other Purchased Services</u>				
580 Travel				15,213.89
Total Other Purchased Services				\$15,213.89
600 <u>Supplies</u>				
630 Food				94.74
640 Books and Periodicals				78.88
Total Supplies				\$173.62
Total 2834 Staff Development Services – Non-Instructional, Certified Staff Only				\$87,264.11



LEA : 113362303      Eastern Lancaster County SD

Printed 10/22/2020 7:43:46 AM

<b>General Fund (10)</b>				
<b>2835 Health Services</b>	<u>Elementary</u>	<u>Secondary</u>	<u>Federal</u>	<u>Total</u>
<b>100 <u>Personnel Services – Salaries</u></b>				
100 Personnel Services – Salaries				6,903.04
<b>Total Personnel Services – Salaries</b>				<b>\$6,903.04</b>
<b>200 <u>Personnel Services – Employee Benefits</u></b>				
220 Social Security Contributions				517.93
230 PSERS Retirement Contributions				1,852.68
260 Workers’ Compensation				43.40
<b>Total Personnel Services – Employee Benefits</b>				<b>\$2,414.01</b>
<b>300 <u>Purchased Professional and Technical Services</u></b>				
330 Other Professional Services				11,031.15
<b>Total Purchased Professional and Technical Services</b>				<b>\$11,031.15</b>
<b>600 <u>Supplies</u></b>				
610 General Supplies				3,637.24
<b>Total Supplies</b>				<b>\$3,637.24</b>
<b>Total 2835 Health Services</b>				<b>\$23,985.44</b>

General Fund (10)

2836 Staff Development Services – Non-Instructional, Non-Certified Staff Only	<u>Elementary</u>	<u>Secondary</u>	<u>Federal</u>	<u>Total</u>
300 <u>Purchased Professional and Technical Services</u>				
360 Employee Training and Development Services				11,416.55
Total Purchased Professional and Technical Services				\$11,416.55
500 <u>Other Purchased Services</u>				
580 Travel				1,981.67
Total Other Purchased Services				\$1,981.67
600 <u>Supplies</u>				
640 Books and Periodicals				145.92
650 Supplies & Fees – Technology Related				625.00
Total Supplies				\$770.92
800 <u>Other Objects</u>				
810 Dues and Fees				25.00
Total Other Objects				\$25.00
Total 2836 Staff Development Services – Non-Instructional, Non-Certified Staff Only				\$14,194.14

General Fund (10)

2839 Other Staff Services

<u>Elementary</u>	<u>Secondary</u>	<u>Federal</u>	<u>Total</u>
-------------------	------------------	----------------	--------------

300 Purchased Professional and Technical Services

330 Other Professional Services			4,976.00
---------------------------------	--	--	----------

<b>Total Purchased Professional and Technical Services</b>			<b>\$4,976.00</b>
--	--	--	-------------------

<b>Total 2839 Other Staff Services</b>			<b>\$4,976.00</b>
--	--	--	-------------------

General Fund (10)

2900 Other Support Services	<u>Elementary</u>	<u>Secondary</u>	<u>Federal</u>	<u>Total</u>
100 <u>Personnel Services – Salaries</u>				
100 Personnel Services – Salaries				50,081.06
Total Personnel Services – Salaries				\$50,081.06
200 <u>Personnel Services – Employee Benefits</u>				
220 Social Security Contributions				3,771.86
260 Workers’ Compensation				315.04
Total Personnel Services – Employee Benefits				\$4,086.90
500 <u>Other Purchased Services</u>				
595 IU Payments By Withholding				36,073.76
Total Other Purchased Services				\$36,073.76
Total 2900 Other Support Services				\$90,241.72

General Fund (10)

2910 Support Services Not Listed Elsewhere In the 2000 Series

Elementary                      Secondary                      Federal                      Total

<b>100 <u>Personnel Services – Salaries</u></b>				
100 Personnel Services – Salaries				50,081.06
<b>Total Personnel Services – Salaries</b>				<b>\$50,081.06</b>
<b>200 <u>Personnel Services – Employee Benefits</u></b>				
220 Social Security Contributions				3,771.86
260 Workers’ Compensation				315.04
<b>Total Personnel Services – Employee Benefits</b>				<b>\$4,086.90</b>
<b>500 <u>Other Purchased Services</u></b>				
595 IU Payments By Withholding				36,073.76
<b>Total Other Purchased Services</b>				<b>\$36,073.76</b>
<b>Total 2910 Support Services Not Listed Elsewhere In the 2000 Series</b>				<b>\$90,241.72</b>

LEA : 113362303      Eastern Lancaster County SD

Printed 10/22/2020 7:43:51 AM

General Fund (10)

<b>3000 Operation of Non-Instructional Services</b>	<b><u>Total</u></b>
<b>100 <u>Personnel Services – Salaries</u></b>	
100 Personnel Services – Salaries	618,336.21
<b>Total Personnel Services – Salaries</b>	<b>\$618,336.21</b>
<b>200 <u>Personnel Services – Employee Benefits</u></b>	
210 Group Insurance – Contracted Provider	421.60
220 Social Security Contributions	46,721.06
230 PSERS Retirement Contributions	154,995.47
260 Workers' Compensation	2,994.55
270 Group Insurance – Self-Insurance	22,711.68
<b>Total Personnel Services – Employee Benefits</b>	<b>\$227,844.36</b>
<b>300 <u>Purchased Professional and Technical Services</u></b>	
322 Professional Educational Services – Ius	226.16
330 Other Professional Services	1,394.97
340 Technical Services	48,710.00
350 Security / Safety Services	4,269.59
390 Other Purchased Professional and Technical Services	3,467.42
<b>Total Purchased Professional and Technical Services</b>	<b>\$58,068.14</b>
<b>400 <u>Purchased Property Services</u></b>	
430 Repairs and Maintenance Services	14,057.53
440 Rentals	3,149.25
<b>Total Purchased Property Services</b>	<b>\$17,206.78</b>
<b>500 <u>Other Purchased Services</u></b>	
510 Student Transportation Services	41,921.18
520 Insurance – General	2,034.00
530 Communications	230.45
580 Travel	6,219.14
<b>Total Other Purchased Services</b>	<b>\$50,404.77</b>
<b>600 <u>Supplies</u></b>	
610 General Supplies	81,094.80
630 Food	12,407.48
640 Books and Periodicals	13,504.42
650 Supplies & Fees – Technology Related	5,661.00
<b>Total Supplies</b>	<b>\$112,667.70</b>
<b>700 <u>Property</u></b>	
762 Capitalized Equipment - Replacement	33,920.00
<b>Total Property</b>	<b>\$33,920.00</b>
<b>800 <u>Other Objects</u></b>	
810 Dues and Fees	12,650.04
<b>Total Other Objects</b>	<b>\$12,650.04</b>
<b>Total 3000 Operation of Non-Instructional Services</b>	<b>\$1,131,098.00</b>

LEA : 113362303     Eastern Lancaster County SD

Printed 10/22/2020 7:43:51 AM

<b>General Fund (10)</b>				
<b>3200 Student Activities</b>	<b><u>Elementary</u></b>	<b><u>Secondary</u></b>	<b><u>Federal</u></b>	<b><u>Total</u></b>
<b>100 <u>Personnel Services – Salaries</u></b>				
100 Personnel Services – Salaries				611,024.71
<b>Total Personnel Services – Salaries</b>				<b>\$611,024.71</b>
<b>200 <u>Personnel Services – Employee Benefits</u></b>				
210 Group Insurance – Contracted Provider				421.60
220 Social Security Contributions				46,176.70
230 PSERS Retirement Contributions				152,488.22
260 Workers' Compensation				2,948.48
270 Group Insurance – Self-Insurance				22,711.68
<b>Total Personnel Services – Employee Benefits</b>				<b>\$224,746.68</b>
<b>300 <u>Purchased Professional and Technical Services</u></b>				
330 Other Professional Services				1,394.97
340 Technical Services				48,710.00
350 Security / Safety Services				4,269.59
390 Other Purchased Professional and Technical Services				3,467.42
<b>Total Purchased Professional and Technical Services</b>				<b>\$57,841.98</b>
<b>400 <u>Purchased Property Services</u></b>				
430 Repairs and Maintenance Services				14,057.53
440 Rentals				3,149.25
<b>Total Purchased Property Services</b>				<b>\$17,206.78</b>
<b>500 <u>Other Purchased Services</u></b>				
510 Student Transportation Services				41,921.18
520 Insurance – General				2,034.00
530 Communications				230.45
580 Travel				6,219.14
<b>Total Other Purchased Services</b>				<b>\$50,404.77</b>
<b>600 <u>Supplies</u></b>				
610 General Supplies				73,874.61
630 Food				9,698.55
640 Books and Periodicals				8,922.05
650 Supplies & Fees – Technology Related				5,661.00
<b>Total Supplies</b>				<b>\$98,156.21</b>
<b>700 <u>Property</u></b>				
762 Capitalized Equipment - Replacement				33,920.00
<b>Total Property</b>				<b>\$33,920.00</b>
<b>800 <u>Other Objects</u></b>				
810 Dues and Fees				12,650.04
<b>Total Other Objects</b>				<b>\$12,650.04</b>
<b>Total 3200 Student Activities</b>				<b>\$1,105,951.17</b>

LEA : 113362303      Eastern Lancaster County SD

Printed 10/22/2020 7:43:51 AM

General Fund (10)				
3300 Community Services	<u>Elementary</u>	<u>Secondary</u>	<u>Federal</u>	<u>Total</u>
100 <u>Personnel Services – Salaries</u>				
100 Personnel Services – Salaries				7,311.50
Total Personnel Services – Salaries				\$7,311.50
200 <u>Personnel Services – Employee Benefits</u>				
220 Social Security Contributions				544.36
230 PSERS Retirement Contributions				2,507.25
260 Workers’ Compensation				46.07
Total Personnel Services – Employee Benefits				\$3,097.68
300 <u>Purchased Professional and Technical Services</u>				
322 Professional Educational Services – Ius			226.16	226.16
Total Purchased Professional and Technical Services			\$226.16	\$226.16
600 <u>Supplies</u>				
610 General Supplies			7,039.38	7,220.19
630 Food				2,708.93
640 Books and Periodicals			4,582.37	4,582.37
Total Supplies			\$11,621.75	\$14,511.49
Total 3300 Community Services			\$11,847.91	\$25,146.83



General Fund (10)

4000 Facilities Acquisition, Construction and Improvement Services	<u>Total</u>
300 <u>Purchased Professional and Technical Services</u>	
330 Other Professional Services	591,455.57
Total Purchased Professional and Technical Services	\$591,455.57
400 <u>Purchased Property Services</u>	
450 Construction Services	318,900.00
Total Purchased Property Services	\$318,900.00
Total 4000 Facilities Acquisition, Construction and Improvement Services	\$910,355.57

LEA : 113362303 Eastern Lancaster County SD

Printed 10/22/2020 7:43:56 AM

General Fund (10)

4200 Existing Site Improvement Services	<u>Elementary</u>	<u>Secondary</u>	<u>Federal</u>	<u>Total</u>
300 <u>Purchased Professional and Technical Services</u>				
330 Other Professional Services				3,985.00
Total Purchased Professional and Technical Services				\$3,985.00
Total 4200 Existing Site Improvement Services				\$3,985.00

LEA : 113362303 Eastern Lancaster County SD

Printed 10/22/2020 7:43:56 AM

General Fund (10)

4300 Architecture and Engineering Services / Educational Specifications Development – Original and Additional	<u>Elementary</u>	<u>Secondary</u>	<u>Federal</u>	<u>Total</u>
300 <u>Purchased Professional and Technical Services</u>				
330 Other Professional Services				22,175.00
Total Purchased Professional and Technical Services				\$22,175.00
Total 4300 Architecture and Engineering Services / Educational Specifications Development – Original and Additional				\$22,175.00

LEA : 113362303     Eastern Lancaster County SD

Printed 10/22/2020 7:43:56 AM

General Fund (10)

4400 Architecture and Engineering Services / Educational Specifications – Improvements	<u>Elementary</u>	<u>Secondary</u>	<u>Federal</u>	<u>Total</u>
300 <u>Purchased Professional and Technical Services</u>				
330 Other Professional Services				565,295.57
Total Purchased Professional and Technical Services				\$565,295.57
Total 4400 Architecture and Engineering Services / Educational Specifications – Improvements				\$565,295.57

LEA : 113362303     Eastern Lancaster County SD

Printed 10/22/2020 7:43:56 AM

General Fund (10)

4600 Existing Building Improvement Services	<u>Elementary</u>	<u>Secondary</u>	<u>Federal</u>	<u>Total</u>
400 <u>Purchased Property Services</u>				
450 Construction Services				318,900.00
Total Purchased Property Services				\$318,900.00
Total 4600 Existing Building Improvement Services				\$318,900.00

LEA : 113362303      Eastern Lancaster County SD

Printed 10/22/2020 7:44:02 AM

General Fund (10)

5000 Other Expenditures and Financing Uses		<u>Total</u>
800 <u>Other Objects</u>		
830 Interest		295,200.00
880 Refunds of Prior Years' Receipts		14,163.56
Total Other Objects		\$309,363.56
900 <u>Other Uses of Funds</u>		
910 Redemption of Principal		3,305,000.00
932 Capital Reserve Fund Transfers Applicable To Fund 32		1,696,985.44
939 Other Fund Transfers		11,992.67
Total Other Uses of Funds		\$5,013,978.11
Total 5000 Other Expenditures and Financing Uses		\$5,323,341.67

LEA : 113362303 Eastern Lancaster County SD

Printed 10/22/2020 7:44:02 AM

General Fund (10)

5100 Debt Service / Other Expenditures and Financing Uses	<u>Elementary</u>	<u>Secondary</u>	<u>Federal</u>	<u>Total</u>
800 <u>Other Objects</u>				
830 Interest				295,200.00
880 Refunds of Prior Years' Receipts				14,163.56
Total Other Objects				\$309,363.56
900 <u>Other Uses of Funds</u>				
910 Redemption of Principal				3,305,000.00
Total Other Uses of Funds				\$3,305,000.00
Total 5100 Debt Service / Other Expenditures and Financing Uses				\$3,614,363.56

General Fund (10)

5110 Debt Service	<u>Elementary</u>	<u>Secondary</u>	<u>Federal</u>	<u>Total</u>
800 <u>Other Objects</u>				
830 Interest				295,200.00
Total Other Objects				\$295,200.00
900 <u>Other Uses of Funds</u>				
910 Redemption of Principal				3,305,000.00
Total Other Uses of Funds				\$3,305,000.00
Total 5110 Debt Service				\$3,600,200.00



LEA : 113362303 Eastern Lancaster County SD

Printed 10/22/2020 7:44:02 AM

General Fund (10)

5130 Refund of Prior Year Revenues / Receipts	<u>Elementary</u>	<u>Secondary</u>	<u>Federal</u>	<u>Total</u>
800 <u>Other Objects</u>				
880 Refunds of Prior Years' Receipts				14,163.56
Total Other Objects				\$14,163.56
Total 5130 Refund of Prior Year Revenues / Receipts				\$14,163.56

LEA : 113362303     Eastern Lancaster County SD

Printed 10/22/2020 7:44:02 AM

General Fund (10)

5200 Interfund Transfers – Out	<u>Elementary</u>	<u>Secondary</u>	<u>Federal</u>	<u>Total</u>
900 <u>Other Uses of Funds</u>				
932 Capital Reserve Fund Transfers Applicable To Fund 32				1,696,985.44
939 Other Fund Transfers				11,992.67
<b>Total Other Uses of Funds</b>				<b>\$1,708,978.11</b>
<b>Total 5200 Interfund Transfers – Out</b>				<b>\$1,708,978.11</b>

General Fund (10)

5230 Capital Projects Fund Transfers	<u>Elementary</u>	<u>Secondary</u>	<u>Federal</u>	<u>Total</u>
900 <u>Other Uses of Funds</u>				
932 Capital Reserve Fund Transfers Applicable To Fund 32				1,696,985.44
Total Other Uses of Funds				\$1,696,985.44
Total 5230 Capital Projects Fund Transfers				\$1,696,985.44

LEA : 113362303 Eastern Lancaster County SD

Printed 10/22/2020 7:44:02 AM

General Fund (10)

5250 Enterprise Fund Transfers	<u>Elementary</u>	<u>Secondary</u>	<u>Federal</u>	<u>Total</u>
900 <u>Other Uses of Funds</u>				
939 Other Fund Transfers				11,992.67
Total Other Uses of Funds				\$11,992.67
Total 5250 Enterprise Fund Transfers				\$11,992.67

Capital Reserve Fund - § 1431 (32)

4000 Facilities Acquisition, Construction and Improvement Services

Total

300 Purchased Professional and Technical Services

330 Other Professional Services	36,741.38
---------------------------------	-----------

Total Purchased Professional and Technical Services	\$36,741.38
---	-------------

400 Purchased Property Services

450 Construction Services	1,683,235.04
---------------------------	--------------

Total Purchased Property Services	\$1,683,235.04
-----------------------------------	----------------

500 Other Purchased Services

520 Insurance – General	10,564.00
-------------------------	-----------

Total Other Purchased Services	\$10,564.00
--------------------------------	-------------

Total 4000 Facilities Acquisition, Construction and Improvement Services	\$1,730,540.42
--	----------------

LEA : 113362303 Eastern Lancaster County SD

Printed 10/22/2020 7:43:58 AM

Capital Reserve Fund - § 1431 (32)				
4400 Architecture and Engineering Services / Educational Specifications – Improvements	<u>Elementary</u>	<u>Secondary</u>	<u>Federal</u>	<u>Total</u>
300 <u>Purchased Professional and Technical Services</u>				
330 Other Professional Services				16,712.06
Total Purchased Professional and Technical Services				\$16,712.06
Total 4400 Architecture and Engineering Services / Educational Specifications – Improvements				\$16,712.06

LEA : 113362303 Eastern Lancaster County SD

Printed 10/22/2020 7:43:58 AM

Capital Reserve Fund - § 1431 (32)

4600 Existing Building Improvement Services	<u>Elementary</u>	<u>Secondary</u>	<u>Federal</u>	<u>Total</u>
300 <u>Purchased Professional and Technical Services</u>				
330 Other Professional Services				20,029.32
Total Purchased Professional and Technical Services				\$20,029.32
400 <u>Purchased Property Services</u>				
450 Construction Services				1,683,235.04
Total Purchased Property Services				\$1,683,235.04
500 <u>Other Purchased Services</u>				
520 Insurance – General				10,564.00
Total Other Purchased Services				\$10,564.00
Total 4600 Existing Building Improvement Services				\$1,713,828.36

	<u>General Fund(10)</u>	<u>Student Sponsored Activity Fund(21)</u>	<u>Public Purpose Trust(27)</u>	<u>Other Compt Approved (28)</u>	<u>Athletic / Activity(29)</u>
<b>1000 <u>Instruction</u></b>					
1100 Regular Programs - Elementary / Secondary	21,403,162.20				
1200 Special Programs - Elementary / Secondary	7,132,193.51				
1300 Vocational Education	1,260,513.27				
1400 Other Instructional Programs - Elementary / Secondary	196,188.99				
1500 Nonpublic School Programs	59,811.06				
<b>Total Instruction</b>	<b>\$30,051,869.03</b>				
<b>2000 <u>Support Services</u></b>					
2100 Support Services - Students	2,134,336.57				
2200 Support Services - Instructional Staff	3,106,794.67				
2300 Support Services - Administration	3,044,481.25				
2400 Support Services - Pupil Health	1,045,074.54				
2500 Support Services - Business	548,196.03				
2600 Operation and Maintenance of Plant Services	4,210,506.87				
2700 Student Transportation Services	2,584,069.04				
2800 Support Services - Central	3,257,937.05				
2900 Other Support Services	90,241.72				
<b>Total Support Services</b>	<b>\$20,021,637.74</b>				
<b>3000 <u>Operation of Non-Instructional Services</u></b>					
3200 Student Activities	1,105,951.17				
3300 Community Services	25,146.83				
<b>Total Operation of Non-Instructional Services</b>	<b>\$1,131,098.00</b>				
<b>4000 <u>Facilities Acquisition, Construction and Improvement Services</u></b>					
4200 Existing Site Improvement Services	3,985.00				
4300 Architecture and Engineering Services / Educational Specifications Development - Original and Additional	22,175.00				
4400 Architecture and Engineering Services / Educational Specifications - Improvements	565,295.57				
4600 Existing Building Improvement Services	318,900.00				
<b>Total Facilities Acquisition, Construction and Improvement Services</b>	<b>\$910,355.57</b>				
<b>5000 <u>Other Expenditures and Financing Uses</u></b>					
5100 Debt Service / Other Expenditures and Financing Uses	3,614,363.56				
5200 Interfund Transfers - Out	1,708,978.11				
<b>Total Other Expenditures and Financing Uses</b>	<b>\$5,323,341.67</b>				
<b>TOTAL ACTUAL EXPENDITURES &amp; OTHER FINANCING USES</b>	<b>\$57,438,302.01</b>				



LEA : 113362303 Eastern Lancaster County SD

Printed 10/22/2020 7:44:18 AM

	<u>Capital Reserve (690.</u>	<u>Capital Reserve (1431)(32)</u>	<u>Other Capital Projects</u>	<u>Debt Service(40)</u>	<u>Permanent(90)</u>
	<u>1850)(31)</u>		<u>Fund(39)</u>		
<b>1000 <u>Instruction</u></b>					
1100 Regular Programs - Elementary / Secondary					
1200 Special Programs - Elementary / Secondary					
1300 Vocational Education					
1400 Other Instructional Programs - Elementary / Secondary					
1500 Nonpublic School Programs					
<b>Total Instruction</b>					
<b>2000 <u>Support Services</u></b>					
2100 Support Services - Students					
2200 Support Services - Instructional Staff					
2300 Support Services - Administration					
2400 Support Services - Pupil Health					
2500 Support Services - Business					
2600 Operation and Maintenance of Plant Services					
2700 Student Transportation Services					
2800 Support Services - Central					
2900 Other Support Services					
<b>Total Support Services</b>					
<b>3000 <u>Operation of Non-Instructional Services</u></b>					
3200 Student Activities					
3300 Community Services					
<b>Total Operation of Non-Instructional Services</b>					
<b>4000 <u>Facilities Acquisition, Construction and Improvement Services</u></b>					
4200 Existing Site Improvement Services					
4300 Architecture and Engineering Services / Educational Specifications Development - Original and Additional					
4400 Architecture and Engineering Services / Educational Specifications - Improvements				16,712.06	
4600 Existing Building Improvement Services				1,713,828.36	
<b>Total Facilities Acquisition, Construction and Improvement Services</b>				<b>\$1,730,540.42</b>	
<b>5000 <u>Other Expenditures and Financing Uses</u></b>					
5100 Debt Service / Other Expenditures and Financing Uses					
5200 Interfund Transfers - Out					
<b>Total Other Expenditures and Financing Uses</b>					
<b>TOTAL ACTUAL EXPENDITURES &amp; OTHER FINANCING USES</b>				<b>\$1,730,540.42</b>	

LEA : 113362303 Eastern Lancaster County SD

Printed 10/22/2020 7:44:18 AM

	<u>Total</u>
<b>1000 <u>Instruction</u></b>	
1100 Regular Programs - Elementary / Secondary	21,403,162.20
1200 Special Programs - Elementary / Secondary	7,132,193.51
1300 Vocational Education	1,260,513.27
1400 Other Instructional Programs - Elementary / Secondary	196,188.99
1500 Nonpublic School Programs	59,811.06
<b>Total Instruction</b>	<b>\$30,051,869.03</b>
<b>2000 <u>Support Services</u></b>	
2100 Support Services - Students	2,134,336.57
2200 Support Services - Instructional Staff	3,106,794.67
2300 Support Services - Administration	3,044,481.25
2400 Support Services - Pupil Health	1,045,074.54
2500 Support Services - Business	548,196.03
2600 Operation and Maintenance of Plant Services	4,210,506.87
2700 Student Transportation Services	2,584,069.04
2800 Support Services - Central	3,257,937.05
2900 Other Support Services	90,241.72
<b>Total Support Services</b>	<b>\$20,021,637.74</b>
<b>3000 <u>Operation of Non-Instructional Services</u></b>	
3200 Student Activities	1,105,951.17
3300 Community Services	25,146.83
<b>Total Operation of Non-Instructional Services</b>	<b>\$1,131,098.00</b>
<b>4000 <u>Facilities Acquisition, Construction and Improvement Services</u></b>	
4200 Existing Site Improvement Services	3,985.00
4300 Architecture and Engineering Services / Educational Specifications Development - Original and Additional	22,175.00
4400 Architecture and Engineering Services / Educational Specifications - Improvements	582,007.63
4600 Existing Building Improvement Services	2,032,728.36
<b>Total Facilities Acquisition, Construction and Improvement Services</b>	<b>\$2,640,895.99</b>
<b>5000 <u>Other Expenditures and Financing Uses</u></b>	
5100 Debt Service / Other Expenditures and Financing Uses	3,614,363.56
5200 Interfund Transfers - Out	1,708,978.11
<b>Total Other Expenditures and Financing Uses</b>	<b>\$5,323,341.67</b>
<b>TOTAL ACTUAL EXPENDITURES &amp; OTHER FINANCING USES</b>	<b>\$59,168,842.43</b>

LEA : 113362303 Eastern Lancaster County SD

Printed 10/22/2020 7:44:26 AM

PSERS Salary Data (Salary Data should relate to the General Fund only)

Amount	Description	Amount
	Total Salary Base for salaries subject to PSERS withholding	19,479,788.51
	Total Federally Funded salaries subject to PSERS withholding	1,066,769.10

Title I Expenditure Data

Amount	Description	Amount
	Expenditures Funded with Current Title I Funds	828,734.48
	Expenditures Funded with Carry over Title I Funds	
Total Title I Expenditure Data		\$828,734.48

Benefits for Staff Relative to Collective Bargaining Agreements

	OBJECT	COVERED	NOT COVERED	TOTAL
10 General Fund	No Self Insurance data to report			
	211 Medical Insurance			
	212 Dental Insurance			
	215 Eye Care Insurance			
	216 Prescription Insurance			
	271 Self-Insurance Medical Benefits			
	272 Self-Insurance Dental Benefits			
	275 Self-Insurance Eye Care Benefits			
	276 Self-Insurance Prescription Benefits			
	FUND TOTAL			
50 Enterprise Fund	No Self Insurance data to report			
	211 Medical Insurance			
	212 Dental Insurance			
	215 Eye Care Insurance			
	216 Prescription Insurance			
	271 Self-Insurance Medical Benefits			
	272 Self-Insurance Dental Benefits			
	275 Self-Insurance Eye Care Benefits			
	276 Self-Insurance Prescription Benefits			
	FUND TOTAL			
60 Internal Service Fund				
	211 Medical Insurance			
	212 Dental Insurance			
	215 Eye Care Insurance			
	216 Prescription Insurance			
	271 Self-Insurance Medical Benefits	2,047,338.45	757,234.77	2,804,573.22
	272 Self-Insurance Dental Benefits	139,000.48	51,411.13	190,411.61
	275 Self-Insurance Eye Care Benefits			
	276 Self-Insurance Prescription Benefits	176,153.18	65,152.55	241,305.73
	FUND TOTAL	\$2,362,492.11	\$873,798.45	\$3,236,290.56
Total of All Funds		\$2,362,492.11	\$873,798.45	\$3,236,290.56

LEA : 113362303 Eastern Lancaster County SD

Printed 10/22/2020 7:44:35 AM

Function	Special Education (Prior Year)	Nonspecial Education (Prior Year)	Total (Prior Year)	Special Education (Current Year)	Nonspecial Education (Current Year)	Total (Current Year)
2120 Guidance Services	404,131.04	845,030.10	1,249,161.14	346,667.96	797,028.41	1,143,696.37
2140 Psychological Services	354,605.50	162,829.13	517,434.63	352,554.06	204,793.74	557,347.80
2150 Speech Pathology and Audiology Services						
2160 Social Work Services	99,541.11	56,750.49	156,291.60	106,422.12	161,864.76	268,286.88
2260 Instruction and Curriculum Development Services	1,126,084.97	840,236.97	1,966,321.94	1,105,825.14	779,960.52	1,885,785.66
2350 Legal and Accounting Services	14,740.47	70,343.99	85,084.46	22,540.64	45,266.74	67,807.38
2420 Medical Services	344,864.03	4,021.50	348,885.53	294,342.66	3,300.91	297,643.57
2440 Nursing Services	164,804.11	551,144.27	715,948.38	185,257.09	546,999.05	732,256.14
2700 Student Transportation Services	880,185.59	2,224,334.82	3,104,520.41	561,545.59	2,022,523.45	2,584,069.04
Total	\$3,388,956.82	\$4,754,691.27	\$8,143,648.09	\$2,975,155.26	\$4,561,737.58	\$7,536,892.84

LEA : 113362303      Eastern Lancaster County SD

Printed 10/22/2020 7:44:40 AM

	(PRINCIPAL AMOUNTS ONLY)							
<u>GOVERNMENTAL FUNDS/ ACTIVITIES</u>	Short-Term Borrowing	General Obligation Bonds/Notes	Authority Building Obligations	Other Long-Term Debt	Other Post- Employment Benefits (OPEB)	Compensated Absences	Net Pension Liability	Total
1. Debt at Beginning of Fiscal Year		8,735,000.00		1,338,393.00	7,314,120.00	575,218.00	73,998,427.00	91,961,158.00
2. Additional Debt Incurred During Year					110,011.00	40,047.00		150,058.00
3. Retirements and Repayments		3,305,000.00		74,613.00			1,147,357.00	4,526,970.00
4. Debt at End of Fiscal Year		5,430,000.00		1,263,780.00	7,424,131.00	615,265.00	72,851,070.00	87,584,246.00
5. Accreted Interest at End Of Fiscal Year								
6. Total Debt and Accreted Interest		5,430,000.00		1,263,780.00	7,424,131.00	615,265.00	72,851,070.00	87,584,246.00
7. Current Portion P&I - Due within 1 year		3,599,500.00		96,480.53		20,443.00		3,716,423.53
8. Interest Paid during current fiscal year		295,200.00		37,842.22				333,042.22

(PRINCIPAL AMOUNTS ONLY)								
<u>PROPRIETARY FUNDS</u>	Short-Term Borrowing	General Obligation Bonds/Notes	Authority Building Obligations	Other Long-Term Debt	Other Post- Employment Benefits (OPEB)	Compensated Absences	Net Pension Liability	Total
1. Debt at Beginning of Fiscal Year					24,030.00		553,284.00	577,314.00
2. Additional Debt Incurred During Year					3,139.00		44,341.00	47,480.00
3. Retirements and Repayments								
4. Debt at End of Fiscal Year					27,169.00		597,625.00	624,794.00
5. Accreted Interest at End Of Fiscal Year								
6. Total Debt and Accreted Interest					27,169.00		597,625.00	624,794.00
7. Current Portion P&I - Due within 1 year								
8. Interest Paid during current fiscal year								

LEA : 113362303     Eastern Lancaster County SD

Total Principal and Interest Payments Made by Your School - All Funds

Function	Fund		Principal (910)	Principal (920)	Interest (830)	Total (Principal +Interest)	Misc Other Uses (990)
5110	10	General Fund	3,305,000.00		295,200.00	3,600,200.00	
5110	20	Special Revenue Funds					
5110	30	Capital Projects Funds					
5110	40	Debt Service Fund					
5110	90	Permanent Fund					
5120	10	General Fund					
5120	20	Special Revenue Funds					
5120	30	Capital Projects Funds					
5120	40	Debt Service Fund					
Total Debt Payments - Governmental Funds			\$3,305,000.00		\$295,200.00	\$3,600,200.00	

Function	Fund		Principal (910)	Principal (920)	Interest (830)	Total (Principal +Interest)
5110	50	Enterprise Fund				
5110	60	Internal Service Fund				
5120	50	Enterprise Fund				
5120	60	Internal Service Fund				
Total Debt Payments - Proprietary Funds						

LEA : 113362303 Eastern Lancaster County SD

Printed 10/22/2020 7:44:40 AM

**Debt Details**  
**Governmental Funds/ Activities**

Debt Category	Debt Issue Date (MM/YYYY)	Principal Amounts Only				Current Portion Due Within One Year (Principal and Interest)	Interest Paid During Fiscal Year
		Debt at Beginning of Fiscal Year	Additions	Reductions / Repayments	Debt at End of Fiscal Year		
General Obligation Bonds/Notes – CIB	03/2017	8,735,000.00		3,305,000.00	5,430,000.00	3,599,500.00	295,200.00
Other Long Term Debt/Liabilities		1,338,393.00		74,613.00	1,263,780.00	96,480.53	37,842.22
Compensated Absences		575,218.00	40,047.00		615,265.00	20,443.00	
Other Post-Employment Benefits (OPEB)		7,314,120.00	110,011.00		7,424,131.00		
Net Pension Liability		73,998,427.00		1,147,357.00	72,851,070.00		
Totals for Debt Entered:		\$91,961,158.00	\$150,058.00	\$4,526,970.00	\$87,584,246.00	\$3,716,423.53	\$333,042.22

**Bond Details**  
**Proprietary Funds**

Debt Category	Debt Issue Date (MM/YYYY)	Principal Amounts Only				Current Portion Due Within One Year (Principal and Interest)	Interest Paid During Fiscal Year
		Debt at Beginning of Fiscal Year	Additions	Reductions / Repayments	Debt at End of Fiscal Year		
Other Post-Employment Benefits (OPEB)		24,030.00	3,139.00		27,169.00		
Net Pension Liability		553,284.00	44,341.00		597,625.00		
Totals for Debt Entered:		\$577,314.00	\$47,480.00		\$624,794.00		



LEA : 113362303     Eastern Lancaster County SD

Printed 10/22/2020 7:44:44 AM

**General Fund (10)**

Section 1: Tuition/Purchased Services as Reported within Expenditure Detail	Amount
Tuition Reported in General Fund Expenditures 1000-560	2,413,943.87
Purchased Services in General Fund Expenditures 1000-594 and 1000-597	9,333.08
<b>Section 1 Total</b>	<b>\$2,423,276.95</b>

Section 2: Tuition Paid to Institution Types During Fiscal Year	Tuition Paid For Nonspecial Education	Tuition Paid For Special Education	Total
1    1306 Institutions			
2    Institutionalized Children's Programs		9,333.08	9,333.08
3    Juveniles Incarcerated in Adult Facilities			
4    Residential Treatment Facilities			
5    Other Local Education Agencies	17,040.21	66,121.16	83,161.37
6    Brick and Mortar Charter Schools			
7    Cyber Charter Schools	620,693.70	362,386.10	983,079.80
8    Career and Technology Centers	741,026.18	397,262.88	1,138,289.06
9    Approved Private Schools			
10   PA Chartered Schools for the Deaf and Blind			
11   Private Residential Rehabilitative Institutions	44.09	18,261.61	18,305.70
12   Juvenile Detention Centers			
13   Special Program Jointures			
14   Other Tuition Not Included Elsewhere In This Section		191,107.94	191,107.94
<b>Section 2 Total</b>	<b>\$1,378,804.18</b>	<b>\$1,044,472.77</b>	<b>\$2,423,276.95</b>

Food Service / Cafeteria Operations Fund (51)

2000 Support Services		<u>Total</u>
300 <u>Purchased Professional and Technical Services</u>		
360 Employee Training and Development Services		1,326.00
Total Purchased Professional and Technical Services		\$1,326.00
500 <u>Other Purchased Services</u>		
580 Travel		1,176.80
Total Other Purchased Services		\$1,176.80
Total 2000 Support Services		\$2,502.80

Food Service / Cafeteria Operations Fund (51)

2800 Support Services – Central	<u>Elementary</u>	<u>Secondary</u>	<u>Federal</u>	<u>Total</u>
300 <u>Purchased Professional and Technical Services</u>				
360 Employee Training and Development Services				1,326.00
Total Purchased Professional and Technical Services				\$1,326.00
500 <u>Other Purchased Services</u>				
580 Travel				1,176.80
Total Other Purchased Services				\$1,176.80
Total 2800 Support Services – Central				\$2,502.80

Food Service / Cafeteria Operations Fund (51)

2830 Staff Services	<u>Elementary</u>	<u>Secondary</u>	<u>Federal</u>	<u>Total</u>
300 <u>Purchased Professional and Technical Services</u>				
360 Employee Training and Development Services				1,326.00
Total Purchased Professional and Technical Services				\$1,326.00
500 <u>Other Purchased Services</u>				
580 Travel				1,176.80
Total Other Purchased Services				\$1,176.80
Total 2830 Staff Services				\$2,502.80

Food Service / Cafeteria Operations Fund (51)

2836 Staff Development Services – Non-Instructional, Non-Certified Staff Only	<u>Elementary</u>	<u>Secondary</u>	<u>Federal</u>	<u>Total</u>
300 <u>Purchased Professional and Technical Services</u>				
360 Employee Training and Development Services				1,326.00
Total Purchased Professional and Technical Services				\$1,326.00
500 <u>Other Purchased Services</u>				
580 Travel				1,176.80
Total Other Purchased Services				\$1,176.80
Total 2836 Staff Development Services – Non-Instructional, Non-Certified Staff Only				\$2,502.80

LEA : 113362303 Eastern Lancaster County SD

Printed 10/22/2020 7:44:56 AM

Food Service / Cafeteria Operations Fund (51)

3000 Operation of Non-Instructional Services		Total
100 Personnel Services – Salaries		
100 Personnel Services – Salaries		183,249.00
Total Personnel Services – Salaries		\$183,249.00
200 Personnel Services – Employee Benefits		
210 Group Insurance – Contracted Provider		247.20
220 Social Security Contributions		13,134.68
230 PSERS Retirement Contributions		123,252.31
260 Workers' Compensation		1,151.82
270 Group Insurance – Self-Insurance		50,081.99
291 Other Retirement Plans		335.00
Total Personnel Services – Employee Benefits		\$188,203.00
400 Purchased Property Services		
430 Repairs and Maintenance Services		17,392.00
Total Purchased Property Services		\$17,392.00
500 Other Purchased Services		
530 Communications		3,957.34
550 Printing and Binding		560.00
570 Food Service Management		331,590.86
Total Other Purchased Services		\$336,108.20
600 Supplies		
610 General Supplies		73,388.08
630 Food		594,679.32
650 Supplies & Fees – Technology Related		5,206.60
Total Supplies		\$673,274.00
700 Property		
740 Depreciation		22,086.00
Total Property		\$22,086.00
800 Other Objects		
810 Dues and Fees		216.00
Total Other Objects		\$216.00
Total 3000 Operation of Non-Instructional Services		\$1,420,528.20

LEA : 113362303 Eastern Lancaster County SD

Printed 10/22/2020 7:44:56 AM

Food Service / Cafeteria Operations Fund (51)

3100 Food Services	Elementary	Secondary	Federal	Total
100 <u>Personnel Services – Salaries</u>				
100 Personnel Services – Salaries				183,249.00
Total Personnel Services – Salaries				\$183,249.00
200 <u>Personnel Services – Employee Benefits</u>				
210 Group Insurance – Contracted Provider				247.20
220 Social Security Contributions				13,134.68
230 PSERS Retirement Contributions				123,252.31
260 Workers' Compensation				1,151.82
270 Group Insurance – Self-Insurance				50,081.99
291 Other Retirement Plans				335.00
Total Personnel Services – Employee Benefits				\$188,203.00
400 <u>Purchased Property Services</u>				
430 Repairs and Maintenance Services				17,392.00
Total Purchased Property Services				\$17,392.00
500 <u>Other Purchased Services</u>				
530 Communications				3,957.34
550 Printing and Binding				560.00
570 Food Service Management			331,590.86	331,590.86
Total Other Purchased Services			\$331,590.86	\$336,108.20
600 <u>Supplies</u>				
610 General Supplies			41,957.59	73,388.08
630 Food			589,827.60	594,679.32
650 Supplies & Fees – Technology Related				5,206.60
Total Supplies			\$631,785.19	\$673,274.00
700 <u>Property</u>				
740 Depreciation				22,086.00
Total Property				\$22,086.00
800 <u>Other Objects</u>				
810 Dues and Fees				216.00
Total Other Objects				\$216.00
Total 3100 Food Services			\$963,376.05	\$1,420,528.20

Internal Service Fund (60)

2000 Support Services

Total

200	<u>Personnel Services – Employee Benefits</u>	
250	Unemployment Compensation	29,069.51
270	Group Insurance – Self-Insurance	3,236,290.56
292	Health Savings Accounts	490,000.00
299	All Other Employee Benefits	11,060.68
Total Personnel Services – Employee Benefits		\$3,766,420.75
800	<u>Other Objects</u>	
810	Dues and Fees	167.22
Total Other Objects		\$167.22
Total 2000 Support Services		\$3,766,587.97



Internal Service Fund (60)

2900 Other Support Services	<u>Elementary</u>	<u>Secondary</u>	<u>Federal</u>	<u>Total</u>
200 <u>Personnel Services – Employee Benefits</u>				
250 Unemployment Compensation				29,069.51
270 Group Insurance – Self-Insurance				3,236,290.56
292 Health Savings Accounts				490,000.00
299 All Other Employee Benefits				11,060.68
Total Personnel Services – Employee Benefits				\$3,766,420.75
800 <u>Other Objects</u>				
810 Dues and Fees				167.22
Total Other Objects				\$167.22
Total 2900 Other Support Services				\$3,766,587.97

Internal Service Fund (60)

2910 Support Services Not Listed Elsewhere In the 2000 Series

	<u>Elementary</u>	<u>Secondary</u>	<u>Federal</u>	<u>Total</u>
<b>200 <u>Personnel Services – Employee Benefits</u></b>				
250 Unemployment Compensation				29,069.51
270 Group Insurance – Self-Insurance				3,236,290.56
292 Health Savings Accounts				490,000.00
299 All Other Employee Benefits				11,060.68
<b>Total Personnel Services – Employee Benefits</b>				<b>\$3,766,420.75</b>
<b>800 <u>Other Objects</u></b>				
810 Dues and Fees				167.22
<b>Total Other Objects</b>				<b>\$167.22</b>
<b>Total 2910 Support Services Not Listed Elsewhere In the 2000 Series</b>				<b>\$3,766,587.97</b>

	<u>Food Service(51)</u>	<u>Child Care Operations(52)</u>	<u>Other Enterprise(58)</u>	<u>Internal Service(60)</u>	<u>Total</u>
<b>2000 <u>Support Services</u></b>					
2800 Support Services - Central	2,502.80				2,502.80
2900 Other Support Services				3,766,587.97	3,766,587.97
<b>Total Support Services</b>	<b>\$2,502.80</b>			<b>\$3,766,587.97</b>	<b>\$3,769,090.77</b>
<b>3000 <u>Operation of Non-Instructional Services</u></b>					
3100 Food Services	1,420,528.20				1,420,528.20
<b>Total Operation of Non-Instructional Services</b>	<b>\$1,420,528.20</b>				<b>\$1,420,528.20</b>
<b>TOTAL ACTUAL EXPENDITURES &amp; OTHER FINANCING USES</b>	<b>\$1,423,031.00</b>			<b>\$3,766,587.97</b>	<b>\$5,189,618.97</b>

LEA : 113362303 Eastern Lancaster County SD

Printed 10/22/2020 7:45:27 AM

Fund	School	School Number	Local Personnel	Local Nonpersonnel	State Personnel	State Nonpersonnel	Federal Personnel	Federal Nonpersonnel	Total	Explanation
10										
	Blue Ball El Sch	2552	4,130,317.88	1,202,108.96	1,386,608.01	403,565.52	490,472.37	47,310.54	7,660,383.28	
	Brecknock El Sch	2500	4,113,889.62	1,150,708.39	1,381,092.80	386,309.60	289,729.12	43,685.42	7,365,414.95	
	Garden Spot MS	7209	4,296,836.52	1,384,395.30	1,442,510.75	464,761.71	56,896.04	53,109.63	7,698,509.95	
	Garden Spot SHS	2554	8,652,880.55	2,560,112.53	2,904,898.31	859,467.15	255,332.89	81,165.51	15,313,856.94	
	New Holland Elementary	4707	4,519,619.88	1,306,617.11	1,517,302.37	438,650.44	373,327.43	50,268.86	8,205,786.09	
Total			25,713,544.45	7,603,942.29	8,632,412.24	2,552,754.42	1,465,757.85	275,539.96	46,243,951.21	