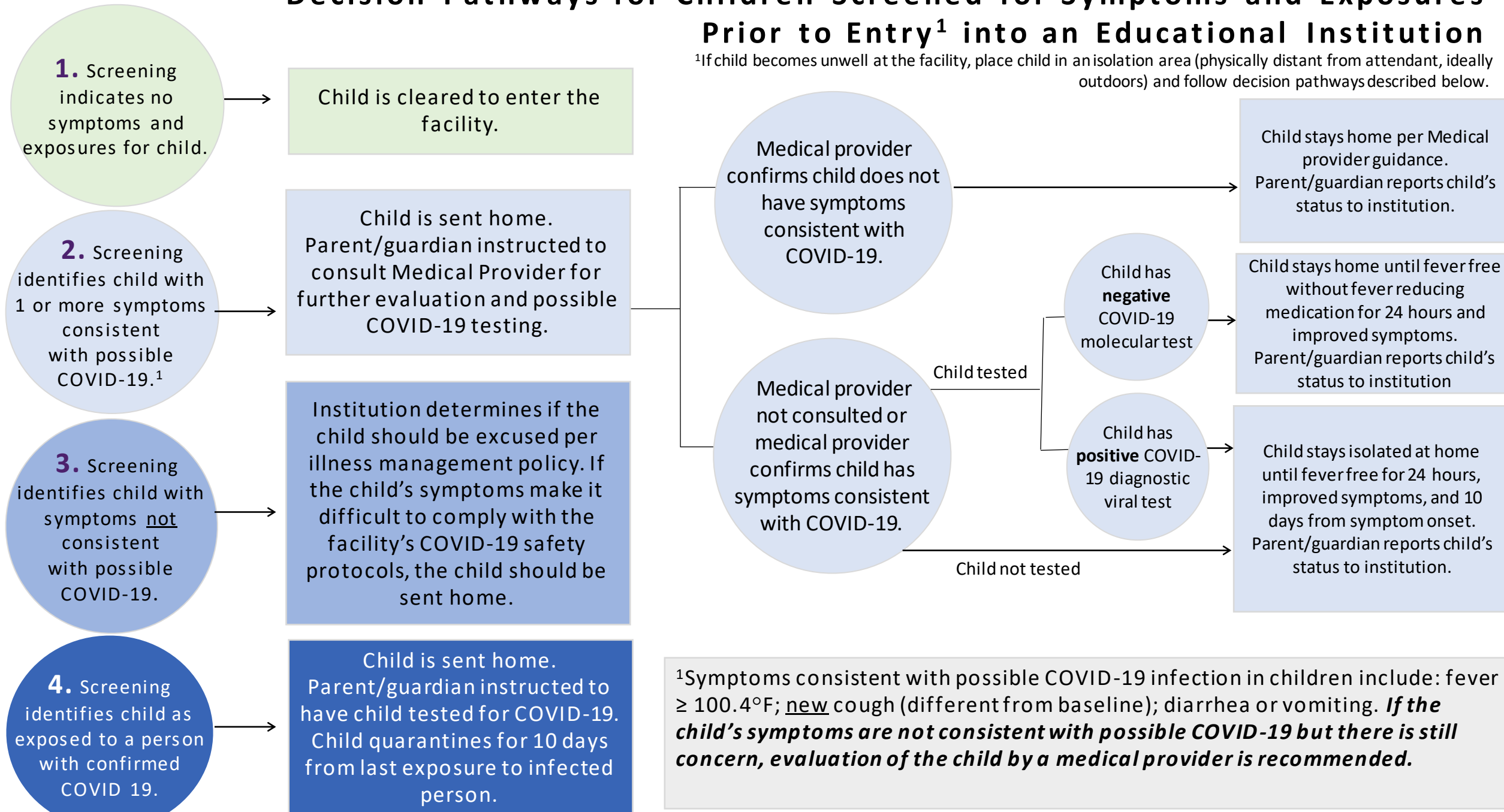


Screening and Exposure Decision Pathways for
Children **at an Educational Institution and Their Close Contacts at the Facility**

Decision Pathways for Children Screened for Symptoms and Exposures Prior to Entry¹ into an Educational Institution

¹If child becomes unwell at the facility, place child in an isolation area (physically distant from attendant, ideally outdoors) and follow decision pathways described below.

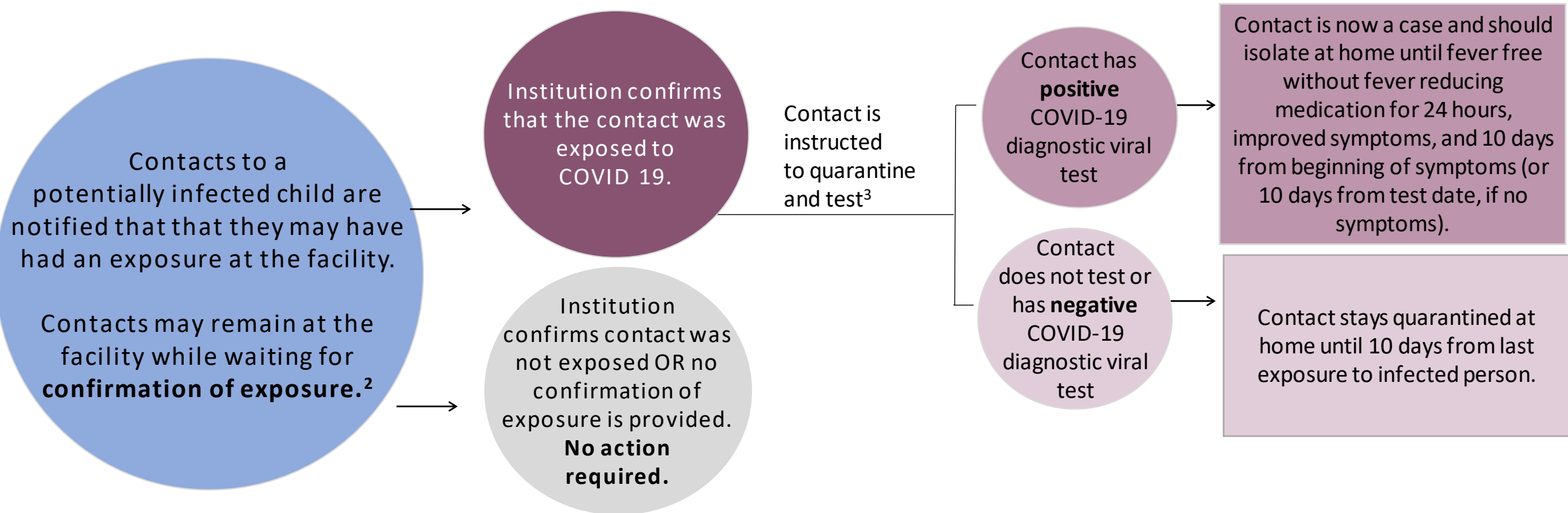


¹Symptoms consistent with possible COVID-19 infection in children include: fever $\geq 100.4^{\circ}\text{F}$; new cough (different from baseline); diarrhea or vomiting. ***If the child's symptoms are not consistent with possible COVID-19 but there is still concern, evaluation of the child by a medical provider is recommended.***

Decision Pathways for Contacts to a Potentially Infected Child¹ at an Educational Institution

¹A **potentially infected child** is a child with ≥ 1 symptoms consistent with possible COVID-19. Symptoms include fever $\geq 100.4^{\circ}\text{F}$; new cough (different from baseline); diarrhea or vomiting.

A **close contact of a potentially infected child** is a child or employee at the facility who was within 6 feet for ≥ 15 minutes over a 24-hour period with a potentially infected child OR had direct contact with bodily fluids/secretions from a potentially infected child.



²**Exposure is confirmed** for a close contact to a potentially infected employee if the Institution receives notification that the potentially infected employee had a positive COVID-19 diagnostic viral test OR received a diagnosis of COVID-19 from a medical provider.

³**Vaccinated persons** who are a close contact to a confirmed case are not required to quarantine and test if they are: (1) fully vaccinated (i.e., ≥ 2 weeks following receipt of the second dose in a 2-dose COVID-19 vaccine series or ≥ 2 weeks following receipt of one dose of a single-dose COVID-19 vaccine) and (2) have remained asymptomatic since last contact with the infected person.