



State of California's Safe Schools For All: Updated K-12 Guidance

Amy Nazarenko-Barbero, MPH

COVID Schools Team

Presentation Overview - July 29, 2021

- California Safe Schools For All Hub & Guidance
- California K-12 Guidance for 21-22 School Year
- Guidance Changes
 - Requirements (Masks and Reporting)
 - Recommendations
 - Modified Quarantine
 - Physical Distancing
 - Cleaning/Disinfecting
 - Food Service
 - Symptom list/Staying home when sick/Testing
 - Ongoing Guidance
- Q&A (early submissions)
- Questions

State of California's Safe Schools For All Hub schools.covid19.ca.gov

State of California Safe Schools For All Hub

California's **Safe Schools for All Plan** provides the support and accountability to establish a clear path to minimize in-school transmissions and enable, first, a phased return to in-person instruction, and then ongoing safe in-person instruction.

The Safe Schools For All Hub consolidates key resources and information related to COVID-19 and schools. New resources will be added to the Hub on a routine basis.

School Administrators & LHDs/Jurisdiction

Portal for School Leaders and LHD/LHJs to Request Technical Assistance from the State Safe Schools For All Team.

Safe Schools Parent Page

Information for parents about COVID-19 and school safety.

[Parent Page \(English\)](#) →

State of California's Safe Schools For All Hub schools.covid19.ca.gov

- Symptom List: <https://cchealth.org/covid19/pdf/Symptoms-Graphic.pdf>

Ongoing Guidance (Requirements)

- Face coverings required for all staff and K-12 students (Private and public)
 - Masks are optional outdoors for all in K-12 school settings.
 - Persons exempted from wearing a face covering due to a medical condition, must wear a non-restrictive alternative, such as a face shield with a drape on the bottom edge, as long as their condition permits it.
 - Consistent with guidance from the 2020-21 school year, schools must develop and implement local protocols to enforce the mask requirements. Additionally, schools should offer alternative educational opportunities for students who are excluded from campus because they will not wear a face covering. Note: Public schools should be aware of the requirements in AB 130 to offer independent study programs for the 2021-22 school year.
- Reporting
 - a. Per AB 86 (2021) and California Code Title 17, section 2500, schools are required to report COVID-19 cases to the local public health department.
 - b. Schools or LEAs should have a COVID-19 liaison to assist the local health department with contact tracing and investigation.

Changes to In-person Guidance (Recommendations)

- Physical Distancing

- Recent evidence indicates that in-person instruction can occur safely without minimum physical distancing requirements when other mitigation strategies (e.g., masking) are implemented. This is consistent with [CDC K-12 School Guidance](#).

- Food service recommendations

a. Maximize physical distance as much as possible while eating (especially indoors). Using additional spaces outside of the cafeteria for mealtime seating such as classrooms or the gymnasium can help facilitate distancing. Arrange for eating outdoors as much as feasible.

b. Clean frequently touched surfaces. Surfaces that come in contact with food should be washed, rinsed, and sanitized before and after meals.

c. Given very low risk of transmission from surfaces and shared objects, there is no need to limit food service approaches to single use items and packaged meals.

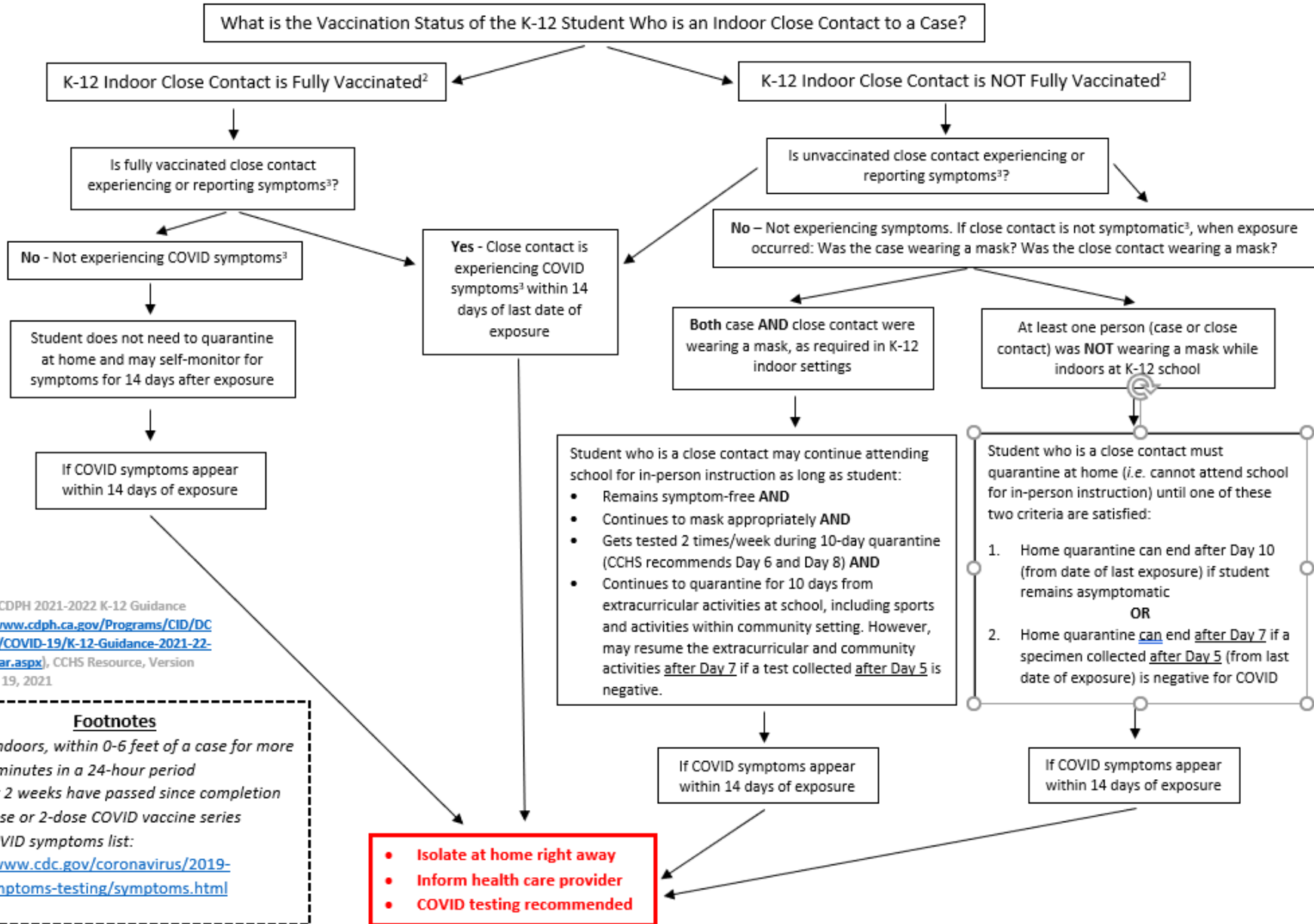
Changes continued:

- Routine cleaning instead of routine disinfection
 - In general, cleaning once a day is usually enough to sufficiently remove potential virus that may be on surfaces. Disinfecting (using disinfectants on the [U.S. Environmental Protection Agency COVID-19 list](#)) removes any remaining germs on surfaces, which further reduces any risk of spreading infection.
 - Frequent disinfection can pose a health risk to children due to strong chemical.
<https://www.cdc.gov/coronavirus/2019-ncov/community/disinfecting-building-facility.html>
 - Disinfection recommended only for spaces where case spent most time within the last 24 hours, should be performed when students are not present.

K-12 School quarantine guidelines, 2021-22 School Year

8. Quarantine recommendations for unvaccinated students for exposures when both parties were wearing a mask, as required in K-12 indoor settings. These are adapted from the [CDC K-12 guidance](#) and [CDC definition of a close contact](#).
 - a. When both parties were wearing a mask in the indoor classroom setting, unvaccinated students who are close contacts (more than 15 minutes over a 24-hour period within 0-6 feet indoors) may undergo a modified 10-day quarantine as follows. They may continue to attend school for in-person instruction if they:
 - i. Are asymptomatic;
 - ii. Continue to appropriately mask, as required;
 - iii. Undergo at least twice weekly testing during the 10-day quarantine; and
 - iv. Continue to quarantine for all extracurricular activities at school, including sports, and activities within the community setting.
9. Quarantine recommendations for: unvaccinated [close contacts](#) who were not wearing masks or for whom the infected individual was not wearing a mask during the indoor exposure; or unvaccinated students as described in #8 above.
 - a. For these contacts, those who remain asymptomatic, meaning they have NOT had any symptoms, may discontinue self-quarantine under the following conditions:
 - i. Quarantine can end after Day 10 from the date of last exposure without testing; OR
 - ii. Quarantine can end after Day 7 if a diagnostic specimen is collected after Day 5 from the date of last exposure and tests negative.
 - b. To discontinue quarantine before 14 days following last known exposure, asymptomatic close contacts must:
 - i. Continue daily self-monitoring for symptoms through Day 14 from last known exposure; AND
 - ii. Follow all recommended non-pharmaceutical interventions (e.g., wearing a mask when around others, hand washing, avoiding crowds) through Day 14 from last known exposure.
 - c. If any symptoms develop during this 14-day period, the exposed person must immediately isolate, get tested and contact their healthcare provider with any questions regarding their care.

K-12 Classroom/Indoor COVID Student Close Contact¹ Follow-up Steps



Based on CDPH 2021-2022 K-12 Guidance
<https://www.cdph.ca.gov/Programs/CID/DCDC/Pages/COVID-19/K-12-Guidance-2021-22-School-Year.aspx>, CCHS Resource, Version
 Date: July 19, 2021

Footnotes

¹ While indoors, within 0-6 feet of a case for more than 15 minutes in a 24-hour period

² At least 2 weeks have passed since completion of a 1-dose or 2-dose COVID vaccine series

³ CDC COVID symptoms list:
<https://www.cdc.gov/coronavirus/2019-ncov/symptoms-testing/symptoms.html>

- Isolate at home right away
- Inform health care provider
- COVID testing recommended

From reporting to follow up

- 1.) A school liaison submits an exposure event to CCHS via SPOT intake form within 24 hours of notification of school onsite exposure.
- 2.) CCHS Schools Team reviews the SPOT intake form for details of the reported exposure event.
- 3.) School investigator performs initial outreach to designated school liaison to collect all relevant information about case*/contacts** and provide mitigation recommendations to support contact tracing efforts.
- 4.) School investigator will monitor the exposure event for 14 days and provide additional guidance/support to the school liaison if needed.

CDPH Recommendations: Testing

- CDPH has a robust State- and Federally-funded school testing program and subject matter experts available to support school decision making, including free testing resources to support screening testing programs (software, test kits, shipping, testing, etc.).
- Resources for schools interested in testing include: California's Testing Task Force [K-12 Schools Testing Program](#) and [K-12 school-based COVID-19 testing strategies](#); The Safe Schools for [All state technical assistance \(TA\) portal](#); and the [CDC K-12 School Guidance](#) screening testing considerations (in Section 1.4 and Appendix 2) that are specific to the school setting.
- CDPH Testing Taskforce: <https://testing.covid19.ca.gov/school-testing/>
- You are also invited to share the upcoming Schools Testing Webinar links with your partner schools/district partners. Below is the timing and zoom information where they can hear about the testing resources directly:
 - **Testing Information Sessions for Schools:**
 - **Tuesday, July 27** from 1-2 PM and **Thursday July 29** at 11-12 AM (same link/# for both)
 - <https://chhsinnovation.zoom.us/j/95563364124?pwd=a1BmdGlzeUcrMnl0YzZ3L25SUGQwZz09>
 - Meeting ID: 955 6336 4124
 - Passcode: 342979
 - (669) 900-6833 or (253) 215-8782

COVID-19 Safety Planning Transparency Recommendations:

- In order to build trust in the school community and support successful return to school, it is a best practice to provide transparency to the school community regarding the school's safety plans. It is recommended that at a minimum all local educational agencies (LEAs) post a safety plan, communicating the safety measures in place for 2021-22, on the LEA's website and at schools, and disseminate to families in advance of the start of the school year.
- Note: With the approval of the federal American Rescue Plan, each local educational agency receiving Elementary and Secondary School Emergency Relief (ARP ESSER) funds is required to adopt a Safe Return to In-Person Instruction and Continuity of Services Plan and review it at least every six months for possible revisions. The plan must describe how the local educational agency will maintain the health and safety of students, educators and other staff. Reference the Elementary and Secondary School Relief Fund (ESSER III) Safe Return to In-Person Instruction Local Educational Agency Plan Template.
- Request Updated List of Liaisons

Contra Costa Health Services Contact Information and Online Resources

However, summer school programs should continue to follow the [2020-2021 K-12 guidance](#).

For resources for colleges and universities, [click here](#).

Additional Resources

- [Back-to-School FAQs for 2021-22 School Year | Preguntas Frecuentes sobre el Regreso a Clases para el Año Escolar 2021-22 - 7/22/2021](#)
- [Report a COVID-19 exposure event](#)
- [Schools Guidance Grid for COVID-19 Cases - 5/10/2021](#)
- Click below for COVID-19 Contact Tracing Tools for Schools
 - [Sample Case Interview Script](#)
 - [Letter for School Community Notification of a Case](#)
 - [Letter for Exposed Staff](#)
 - [Letter for Exposed Students](#)
 - [Letter for Non-Exposed Staff or Student](#)
 - [Letter for Healthcare Provider](#)
 - [School Line List Template](#)
- [Symptoms of COVID-19 | Síntomas de COVID-19](#)
- [COVID-19 in Schools – Common Scenarios and How to Respond – webinar recording - 8/7/2020](#)



Contra Costa Health Services

Contact Information and Online Resources

- **Email:** Covid.Schools@cchealth.org
 - For school liaisons and administrators with suspected/confirmed cases or guidance questions
- **SPOT Intake form:** https://cdph.force.com/SPOT/s/IntakeForm?language=en_US
- **COVID warmline for school administrators and school COVID liasons :** (925) 608-5315
- **Multilingual COVID Call Center:** (844) 729-8410
 - **Option #8 for Schools; for community inquiries (parents, citizens, etc.)**
- **COVID Testing:** (844) 421-0804
- **School COVID Websites:**
 - www.coronavirus.cchealth.org/for-schools-and-childcare
 - www.ccooe.k12.ca.us/news/spotlight/information_about_coronavirus

THANK YOU



All Questions Welcome