



STUDENT TOTALS	→	CASES 562	QUARANTINES 3,439
STAFF TOTALS	→	CASES 170	QUARANTINES 340



Student Learning Option Preference



In-Person

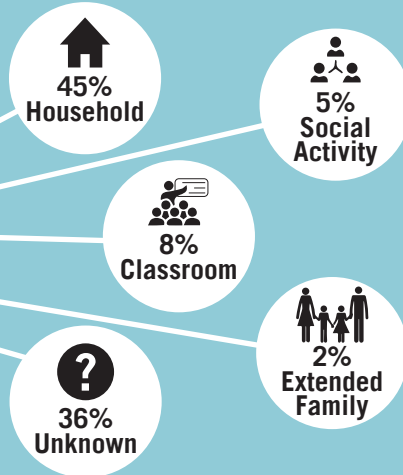
Q1 72% → Q4 81%



Virtual

Q1 28% → Q4 19%

POSSIBLE SOURCE OF DISEASE



1.5%

of quarantined students resulted in a positive case

COVID Expenditures

\$2,387,103

↳ **\$323 per pupil**

Air Filtration
Cleaning Supplies
Staffing
Technology



246,078

COVID Dashboard Webpage Visits

67



Elementary Classrooms Quarantined

Staff Daily Attendance

93%

