



Name: \_\_\_\_\_ D.O.B.: \_\_\_\_\_

Allergy to: \_\_\_\_\_

Weight: \_\_\_\_\_ lbs.

Asthma:  Yes (higher risk for a severe reaction)  No

**For a suspected or active food allergy reaction:**

PLACE  
STUDENT'S  
PICTURE  
HERE

FOR ANY OF THE FOLLOWING  
**SEVERE SYMPTOMS**

If checked, give epinephrine immediately if the allergen was definitely eaten, even if there are no symptoms.



**LUNG**

Short of breath, wheezing, repetitive cough



**HEART**

Pale, blue, faint, weak pulse, dizzy



**THROAT**

Tight, hoarse, trouble breathing/ swallowing



**MOUTH**

Significant swelling of the tongue and/or lips



**SKIN**

Many hives over body, widespread redness



**GUT**

Repetitive vomiting or severe diarrhea



**OTHER**

Feeling something bad is about to happen, anxiety, confusion

**OR A COMBINATION** of mild or severe symptoms from different body areas.

**NOTE:** Do not depend on antihistamines or inhalers (bronchodilators) to treat a severe reaction. Use Epinephrine.

1. **INJECT EPINEPHRINE IMMEDIATELY.**
2. **Call 911.** Request ambulance with epinephrine.
  - Consider giving additional medications (following or with the epinephrine):
    - » Antihistamine
    - » Inhaler (bronchodilator) if asthma
  - Lay the student flat and raise legs. If breathing is difficult or they are vomiting, let them sit up or lie on their side.
  - If symptoms do not improve, or symptoms return, more doses of epinephrine can be given about 5 minutes or more after the last dose.
  - Alert emergency contacts.
  - Transport student to ER even if symptoms resolve. Student should remain in ER for 4+ hours because symptoms may return.

**NOTE: WHEN IN DOUBT, GIVE EPINEPHRINE.**

**MILD SYMPTOMS**

If checked, give epinephrine immediately for ANY symptoms if the allergen was likely eaten.



**NOSE**

Itchy/runny nose, sneezing



**MOUTH**

Itchy mouth



**SKIN**

A few hives, mild itch



**GUT**

Mild nausea/discomfort



1. **GIVE ANTIHISTAMINES, IF ORDERED BY PHYSICIAN**
2. Stay with student; alert emergency contacts.
3. Watch student closely for changes. If symptoms worsen, **GIVE EPINEPHRINE.**

**MEDICATIONS/DOSES**

Epinephrine Brand: \_\_\_\_\_

Epinephrine Dose:  0.15 mg IM  0.3 mg IM

Antihistamine Brand or Generic: \_\_\_\_\_

Antihistamine Dose: \_\_\_\_\_

Other (e.g., inhaler-bronchodilator if asthmatic): \_\_\_\_\_

PARENT/GUARDIAN AUTHORIZATION SIGNATURE

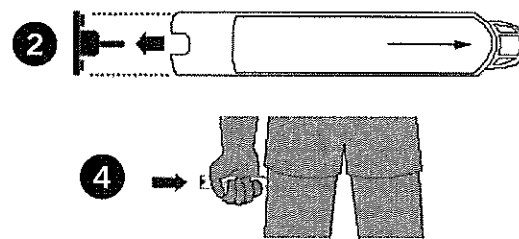
DATE

PHYSICIAN/HCP AUTHORIZATION SIGNATURE

DATE

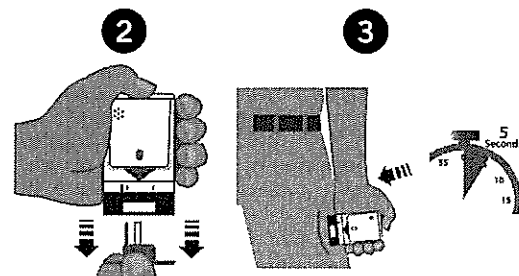
### EPIPEN® (EPINEPHRINE) AUTO-INJECTOR DIRECTIONS

1. Remove the EpiPen Auto-Injector from the plastic carrying case.
2. Pull off the blue safety release cap.
3. Swing and firmly push orange tip against mid-outer thigh.
4. Hold for approximately 10 seconds.
5. Remove and massage the area for 10 seconds.



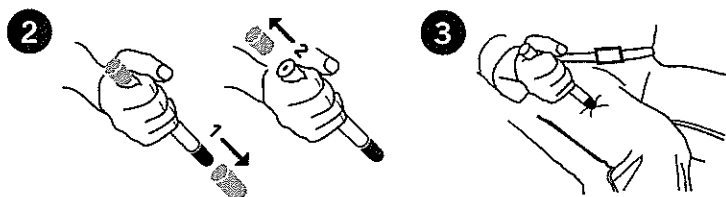
### AUVI-Q™ (EPINEPHRINE INJECTION, USP) DIRECTIONS

1. Remove the outer case of Auvi-Q. This will automatically activate the voice instructions.
2. Pull off red safety guard.
3. Place black end against mid-outer thigh.
4. Press firmly and hold for 5 seconds.
5. Remove from thigh.



### ADRENACLICK®/ADRENACLICK® GENERIC DIRECTIONS

1. Remove the outer case.
2. Remove grey caps labeled "1" and "2".
3. Place red rounded tip against mid-outer thigh.
4. Press down hard until needle penetrates.
5. Hold for 10 seconds. Remove from thigh.



**OTHER DIRECTIONS/INFORMATION** (may self-carry epinephrine, may self-administer epinephrine, etc.):

Treat student before calling Emergency Contacts. The first signs of a reaction can be mild, but symptoms can get worse quickly.

### EMERGENCY CONTACTS — CALL 911

RESCUE SQUAD: \_\_\_\_\_

DOCTOR: \_\_\_\_\_ PHONE: \_\_\_\_\_

PARENT/GUARDIAN: \_\_\_\_\_ PHONE: \_\_\_\_\_

### OTHER EMERGENCY CONTACTS

NAME/RELATIONSHIP: \_\_\_\_\_

PHONE: \_\_\_\_\_

NAME/RELATIONSHIP: \_\_\_\_\_

PHONE: \_\_\_\_\_

PARENT/GUARDIAN AUTHORIZATION SIGNATURE

DATE