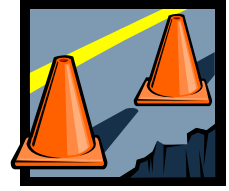
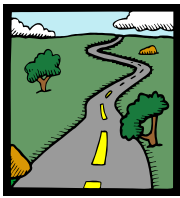


# POTHOLES



Potholes are formed when water seeps into cracks in the pavement surface and the continual freeze-thaw cycle in the early spring moves the surface of the pavement. This movement weakens the pavement. Traffic loosens the pavement even more, and it eventually crumbles and pops out. The pounding of tires wears a hole in the underlying gravel, and a pothole is formed.

During the weeks leading up to the winter season, Town crews make pavement repairs to help minimize the formation of potholes during the winter. The patching of potholes continues throughout the winter. In the past during cold weather, temporary repairs were made with cold patch asphalt. In FY 2010-2011, a piece of equipment was purchased that heats recycled (or reclaimed) asphalt, thus allowing Town crews to make permanent hot patch repairs year-round.



Unfortunately, during periods where the weather fluctuates from freezing to warm temperatures, the formation of potholes is unavoidable. Spring temperatures warm the cold pavement, melting and evaporating any frozen water. This creates air pockets that can eventually cause the pavement to break up. A winter of heavy snow or rain and several freeze-thaw cycles can mean a big pothole season ahead.

If you see a pothole that needs repair, please call the Public Works Department at 860-870-3500.

To help expedite our response, please be prepared to provide some specific information:

- 1) The exact location
- 2) Size (approximately length/width/depth)
- 3) Is the hole on the sidewalk or roadway (driving lane or parking lane)?
- 4) Is there a barricade or orange cone over this hole?



***The more information we have, the better we can service you.***

Potholes on most heavily traveled roads are usually repaired within 48 hours of notification. Maintenance crews are constantly on the lookout for potholes, but we welcome citizen calls about potholes as well. The sooner the pothole is reported, the more quickly Public Works can remove that road hazard.