



The School District of Haverford Township

Haverford High School Design Development Update

21 May 2020



HAVERFORD HIGH SCHOOL

STEPS TAKEN – DESIGN DEVELOPMENT

- Site Planning and Project Phasing
- Zoning & Planning Commission Approval
- Met with District Facilities & High School Administration
- Met with High School Teachers
- 3rd Party/Independent Cost Estimate

An aerial photograph of a school campus. In the center, a large green football field is visible, with a red running track around its perimeter. To the right of the field is a large, multi-story brick building labeled 'Haverford High School'. To the left of the field is a smaller building labeled 'Haverford Middle School'. The campus is surrounded by residential streets and houses. The text 'PROJECT REVIEW' is overlaid in large, bold, grey capital letters across the center of the image.

PROJECT REVIEW





3-Story
Classroom
Addition

Expanded
Parking

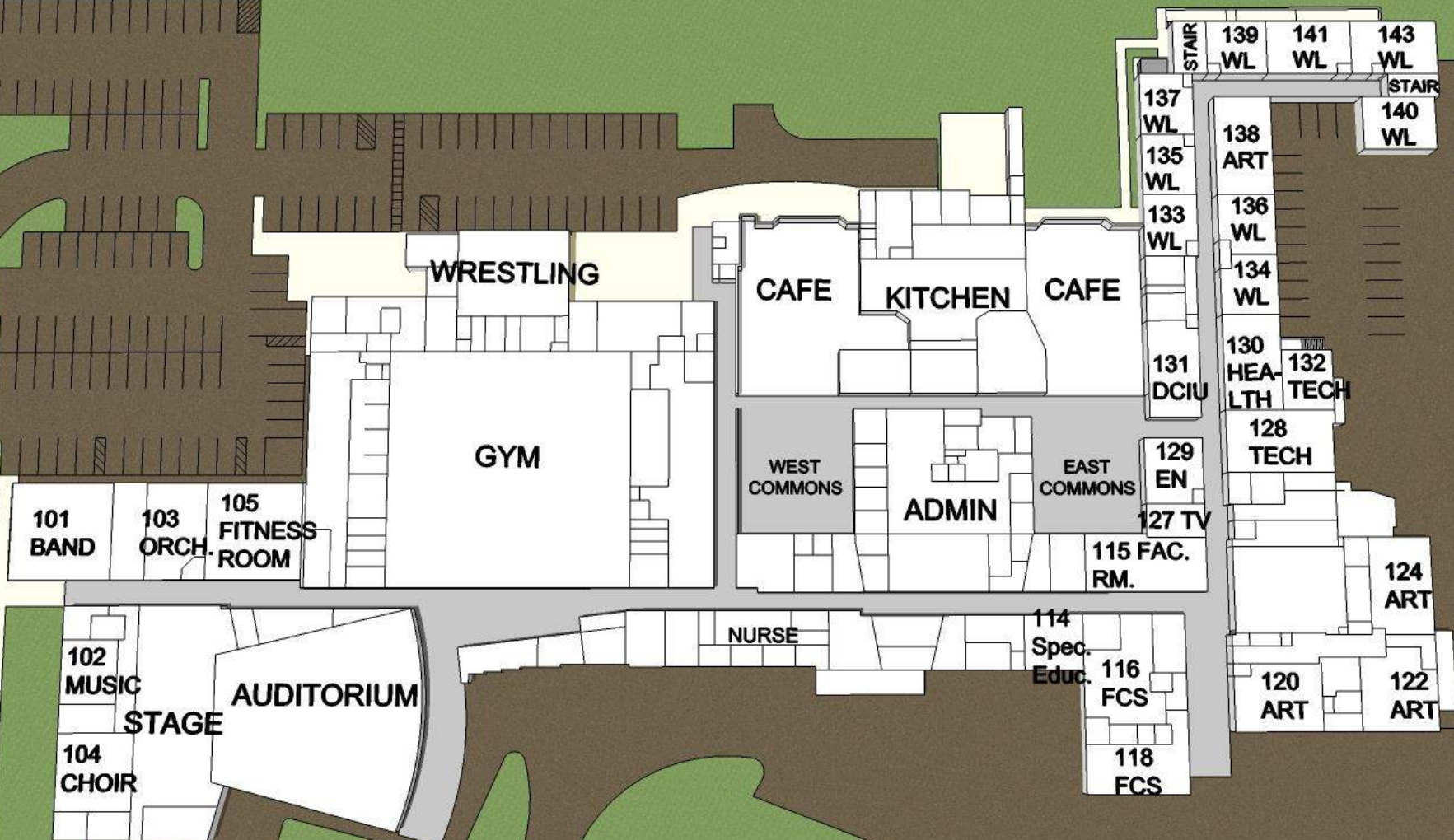
1-Story
Classroom
Addition

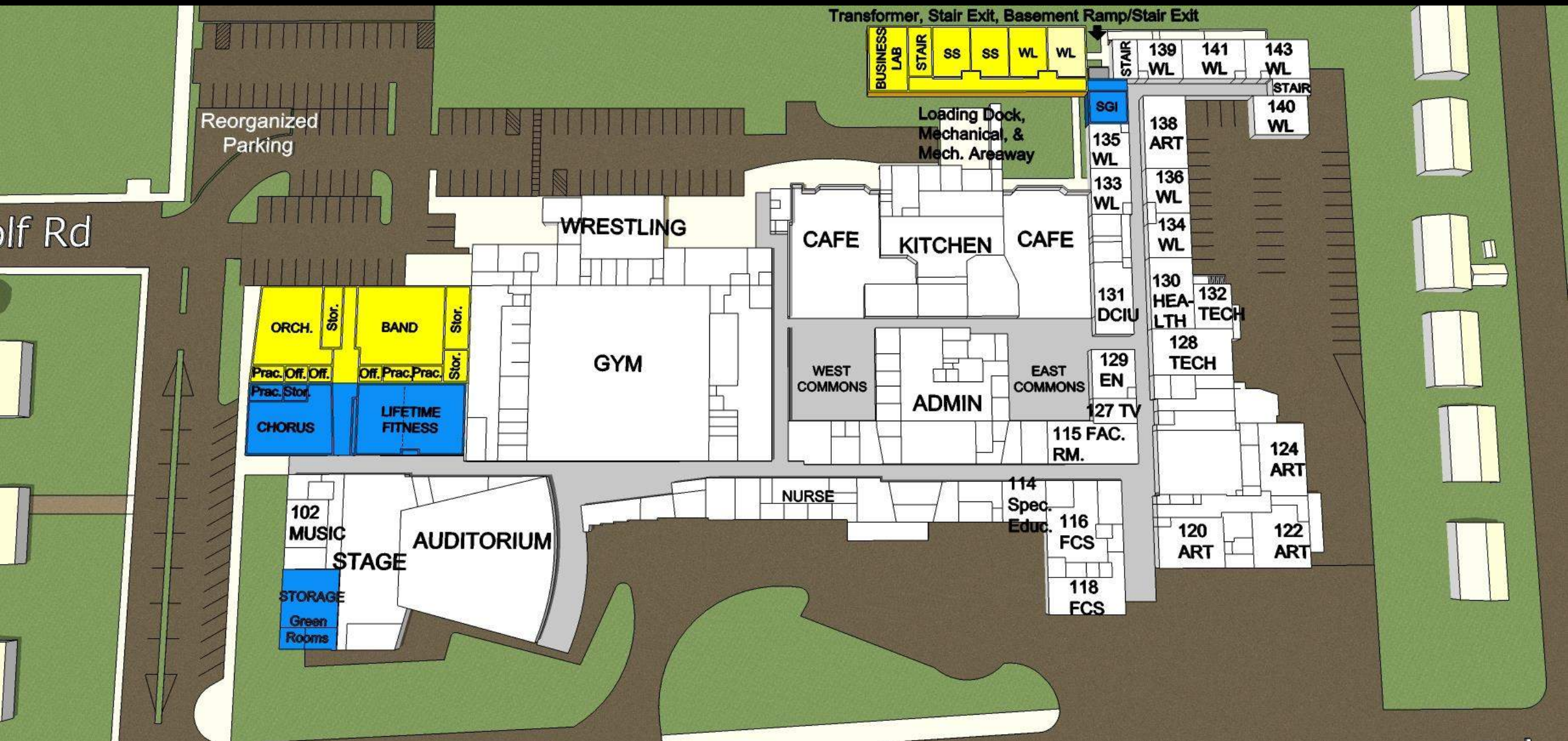
Haverford High School

Haverford Middle School

Faust Orthodontics

olf Rd







3-STORY CLASSROOM WING - EXTERIOR PERSPECTIVE
HAVERFORD HIGH SCHOOL



1-STORY CLASSROOM WING - EXTERIOR PERSPECTIVE
HAVERFORD HIGH SCHOOL



BAND CLASSROOM - INTERIOR PERSPECTIVE
HAVERFORD HIGH SCHOOL

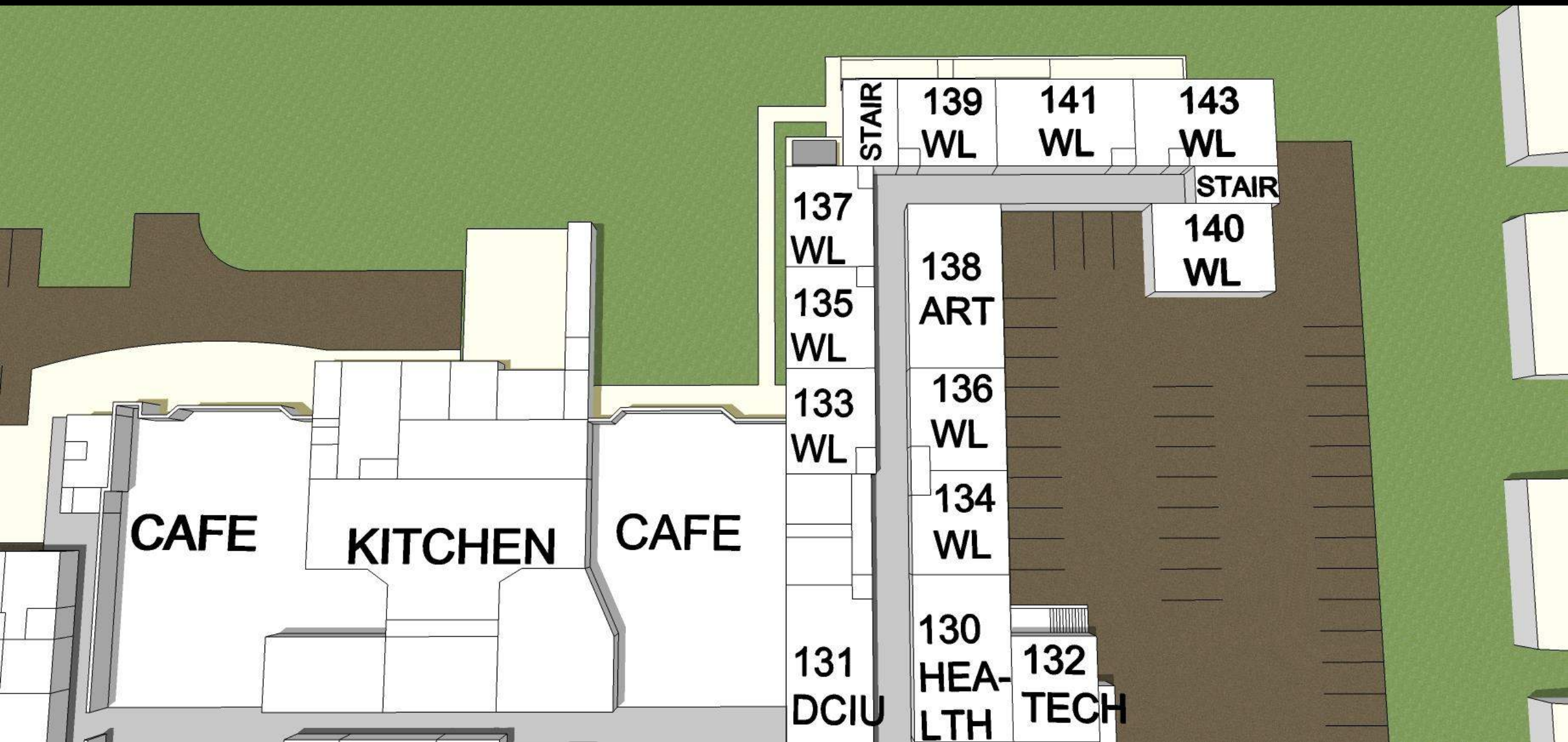


ORCHESTRA CLASSROOM - INTERIOR PERSPECTIVE
HAVERFORD HIGH SCHOOL

An aerial photograph of the Haverford High School campus. A red circle is drawn around a large green field area, which is the site for the new 3-story classroom wing. The text "3-Story Classroom Wing" and "PHASE 1" is overlaid in large, bold, dark grey letters. The map shows surrounding streets like E Marthart Ave, Leedom Ave, Mill Rd, and Strathmore Rd, as well as other school buildings and a baseball field.

3-Story Classroom Wing

PHASE 1



Transformer, Stair Exit, Basement Ramp/Stair Exit





HAVERFORD HIGH SCHOOL

3-Story Classroom Addition

Build 11 Classrooms

(7 Labs & 4 Classrooms)

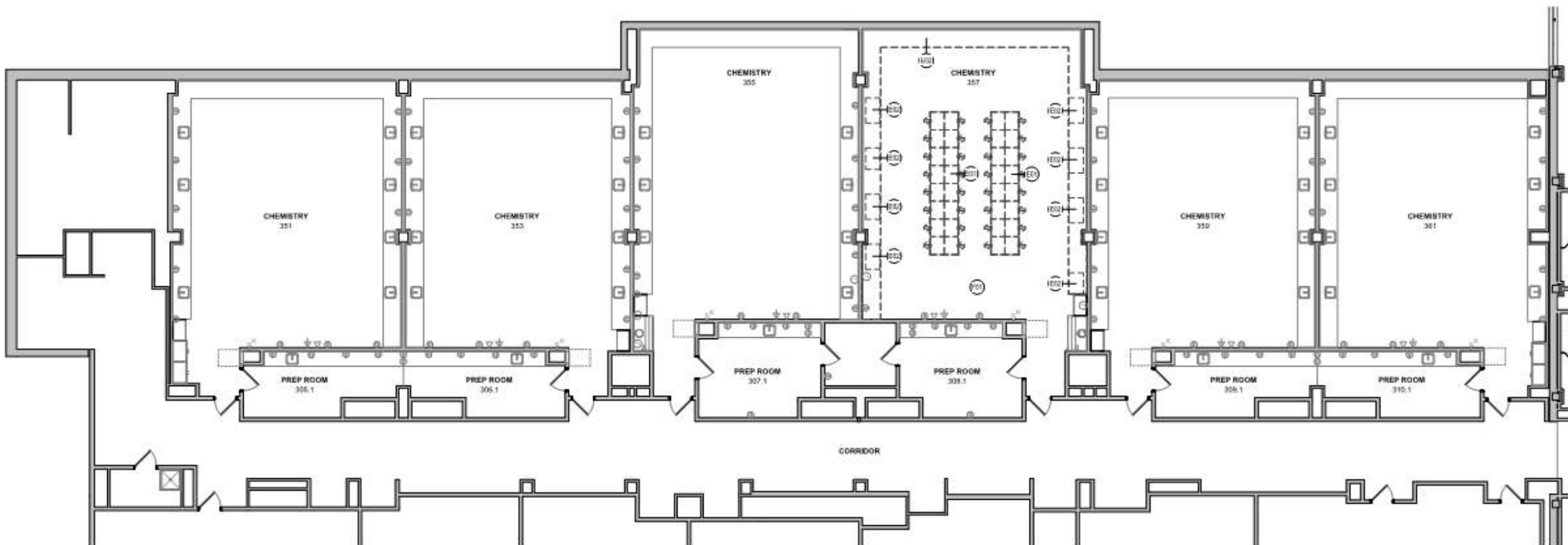
Renovation to link Addition

Convert 3 Existing Classrooms into SGI's to allow for a corridor to link to the new addition

Total Gain of 7 Labs, 1 Classroom, 3 SGI's

An aerial photograph of a school campus. In the center is a large green football field with a red running track. To the left of the field is a baseball field. To the right of the field is a large, multi-story school building with a red roof, labeled 'Haverford High School'. Below the high school is a smaller building labeled 'Haverford Middle School'. The campus is surrounded by residential streets and houses. The text 'Science Lab Renovations PHASE 1' is overlaid in large, bold, dark grey letters across the center of the image.

Science Lab Renovations PHASE 1



HAVERFORD HIGH SCHOOL

SCIENCE LAB RENOVATION

CONVERSION OF CLASSROOMS INTO CHEMISTRY LABS

Create 6 complete Chemistry Labs

- Extend gas lines around perimeter of classrooms
- Add fume hoods into classroom that do not currently have them Equipped
- Add sinks to perimeter in one Lab

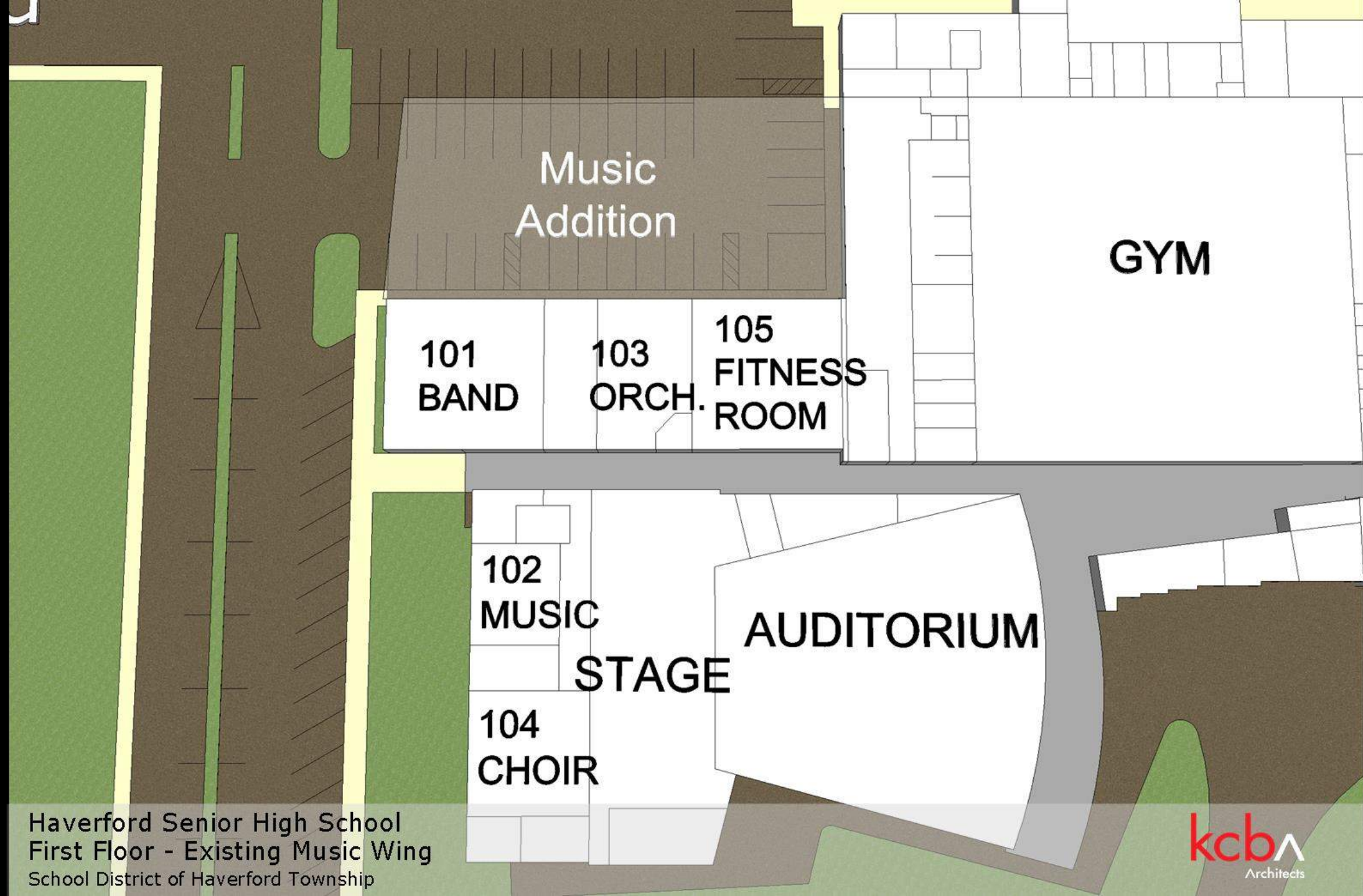
Total Gain of 6 Chemistry Labs that frees regular classroom space.

Cost: \$231,000

An aerial photograph of the Haverford School campus. A red circle is drawn around a large, rectangular, 1-story building with a red roof, which is the classroom wing. The campus includes a large green football field, a baseball field, and several tennis courts. The surrounding area is residential with many houses and streets. Labels for streets like E Marthart Ave, Leedom Ave, Mill Rd, and Strathmore Rd are visible. Labels for 'Haverford Middle School' and 'Haverford School' are also present.

1-Story Classroom Wing

PHASE 2



Music
Addition

GYM

101
BAND

103
ORCH.

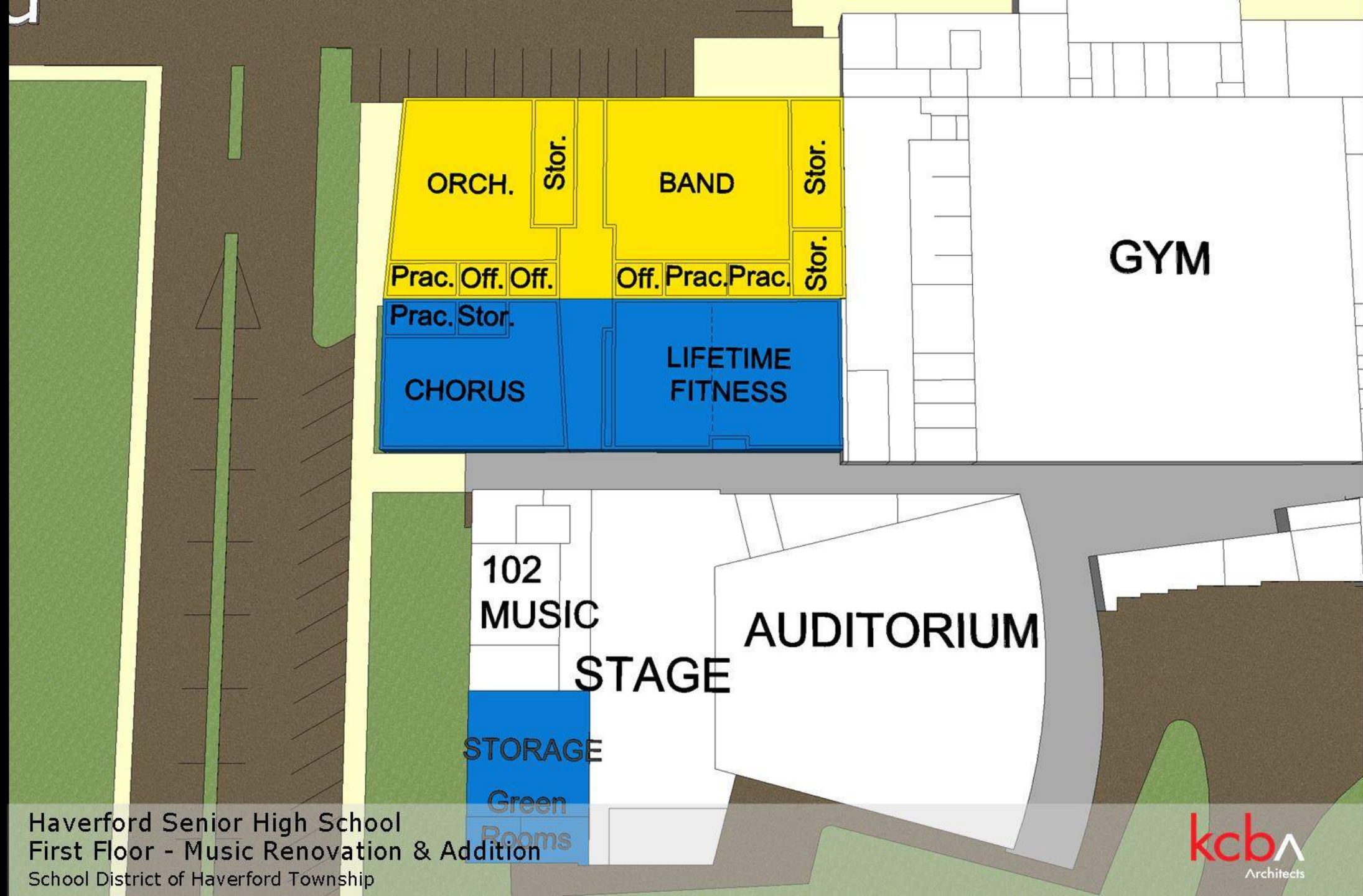
105
FITNESS
ROOM

102
MUSIC

STAGE

AUDITORIUM

104
CHOIR



Haverford Senior High School
First Floor - Music Renovation & Addition
School District of Haverford Township



HAVERFORD HIGH SCHOOL

1-Story Classroom Addition

Build 2 Classrooms (Band and Orchestra)

Renovation of Music and Fitness Classrooms

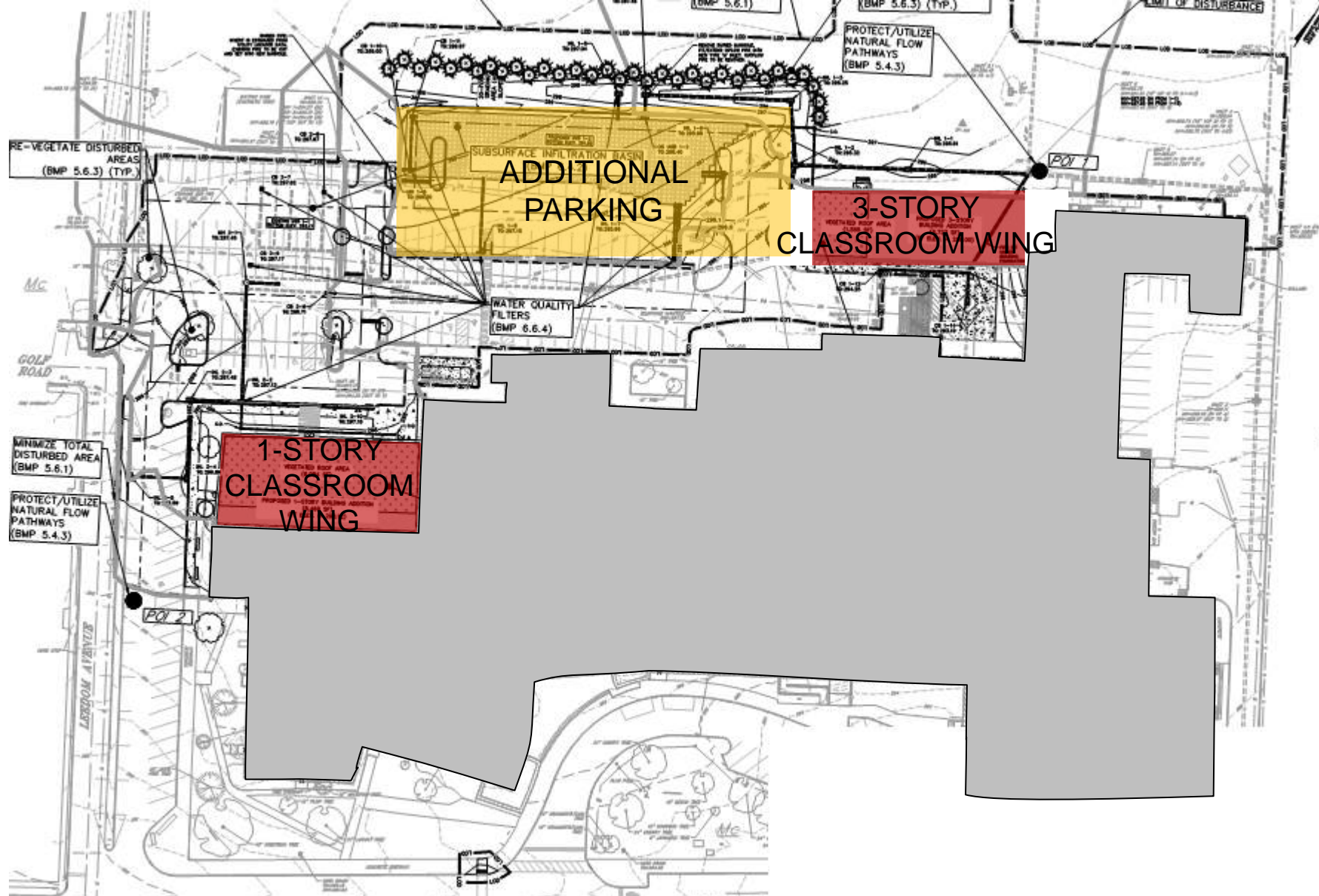
Renovate 2 Classrooms (Chorus and Fitness)

- Convert existing Band Classroom into Chorus Classroom
- Expand existing Fitness Classroom into Orchestra Classroom
- Existing Chorus Classroom used for stage support



The image is an aerial photograph of a suburban area in Haverford, Pennsylvania. It features a large green football field with a red running track on the left side, which has a red 'H' logo in the center. To the right of the football field is a baseball field. Further right is a large green lawn. In the bottom left, there is a building labeled 'Haverford Middle School'. In the bottom right, there is a large complex of buildings labeled 'Haverford High School'. The area is surrounded by residential streets and houses. The word 'SITE' is overlaid in large, bold, black letters in the center of the image.

SITE



ADDITIONAL PARKING AND PARKING RECONFIGURATION HAVERFORD HIGH SCHOOL

HAVERFORD HIGH SCHOOL

TOTAL PROJECT COST ESTIMATE

	Schematic Design	Design Development
Phase I: 3-Story Classroom Wing	\$ 7,713,370	\$ 7,309,321
Phase I: Site Work	\$ 672,552	\$ 712,000
Phase 1	\$ 8,385,922	\$ 8,021,321
Phase I with Soft Costs	\$10,063,107	\$ 9,625,585
Phase II: 1-Story Classroom Wing	\$ 5,441,308	\$ 6,297,568
Phase II with Soft Costs	\$ 6,529,569	\$ 7,557,081
Total Estimated Project Cost:	\$16,592,676	\$17,182,666

HAVERFORD HIGH SCHOOL

HVAC Infrastructure **Cost: \$1,475,277**

HVAC infrastructure is replacing the existing chillers.

Gymnasium HVAC **Cost: \$1,536,079**

Gymnasium HVAC includes the Locker Rooms and Main Gymnasium.

The chiller included in the Phase II: 1-Story Classroom Wing is sized to handle the Gymnasium HVAC.

The Gymnasium HVAC must occur in tandem with or after Phase II.

Costs include 20% for soft costs/contingency.

HAVERFORD HIGH SCHOOL

TOTAL PROJECT COST ESTIMATE

	Schematic Design	Design Development
Phase I with Soft Costs	\$10,063,107	\$ 9,625,585
Phase II with Soft Costs	\$ 6,529,569	\$ 7,557,081
Total Estimated Project Cost	\$16,592,676	\$17,182,666
HVAC Infrastructure		\$ 1,475,277
Gymnasium HVAC		\$ 1,536,079
Total Estimated Project Cost		\$20,194,022

Estimated Costs do not include addressing issues with the façade:

(\$100-\$300k - Scope and estimated costs to be confirmed in June 2020)

HAVERFORD HIGH SCHOOL

NEXT STEPS

- Construction Documents & Cost Estimate
- [Fall 2020] School Board to Bid Project
- [Fall 2020] School Board to Accept Bids
- [December 2020] Award Construction Contracts
- [January 2021] Phase I Construction Begins
- [September 2021] Phase I Occupancy
- Phase 2 - Schedule to be Determined

DISCUSSION

