



**2021-2022 BACK TO SCHOOL PROGRAM GUIDE**  
**Serving Students in Grades K-8**  
**YMCA of Southeastern North Carolina**



# BACK TO SCHOOL AT THE Y!

Thank you for choosing the Y! We are looking forward to the school year ahead at the YMCA of Southeastern North Carolina, and we are excited about the opportunity to be a part of you and your child's lives this school year. It is our aim to run a high quality program that is not only safe, but provides opportunities for children to have fun, be active, enhance education, explore new interests, and build relationships.

For our returning families, welcome back! Thank you for continuing to choose the Y to serve you and your family. To our new families, we welcome you to what we hope will be the first of many years together. As you navigate the waters of YMCA programs, please feel free to ask questions; we will do our best to provide assistance as soon as possible. Relationships are at the core of the Y, and we strive to strengthen relationships between children, parents, and our staff in everything we do.

In this guide, you will see that we are expanding into more schools than ever before! If your child attends a school that is not listed, please let us know and we will do our best to see if there is still a way to serve your family this school year. As we all know, this past year has challenged us in many ways, but one that remained true was our ability to adapt quickly and still provide safe and effective childcare programs. We are continuing to follow CDC guidance and we will continue to operate in a safe, yet effective manner that allows children to learn, grow, and thrive. Please take time to browse this guide, check out our offerings, and visit our website at <https://www.ymcasenc.org/programs/afterschool-care/> to find out more. The majority of your questions will be found in this guide or on our website. We encourage you to register early since our programming will fill to capacity. We are very excited to see you this school year and hope you are ready to experience the best school year yet!

Youth Services Staff  
YMCA of Southeastern North Carolina

## REGISTRATION

Registration is now open! Back to School programming can and will fill up, and we recommend you sign up as soon as possible! There is a one-time \$35 registration fee which is due when you register. For all of our Back to School programs, registration and weekly fees are due the Wednesday before the week your child attends; this allows us to ensure proper staffing, supplies, snacks, and an age-appropriate schedule for those in attendance. You can choose to register online at [www.ymcasenc.org](http://www.ymcasenc.org) (preferred) or you may choose to register in person at our Nir Family YMCA at 2710 Market Street, Wilmington, NC 28403 or in person at our Midtown YMCA located at 709 George Anderson Drive, Wilmington, NC 28412.

## FUN FOR EVERYONE

At the Y, we think fun, new friends, positive role models and great times should be available to every child. That's why we provide scholarships to families who need help making Back to School Programming a reality.

If your family needs a little help to make Back to School programming happen, scholarship forms are available online at <https://www.ymcasenc.org/about/membership/> and are kept completely confidential.

Funds are made possible because of the generous donations made through our Annual Giving Campaign. You can help provide Back to School programming for families by visiting our website and making a tax-deductible online gift or by submitting a donation to our Membership Desk at the Nir Family YMCA or Midtown YMCA.

## YOU'RE IN GOOD HANDS

Staff, as role models, are selected for sound judgment, maturity, experience, enthusiasm, and creativity. All staff are interviewed and go through a complete background check prior to being hired. Training occurs before the school year and throughout the program to ensure attention to detail. All staff are certified in CPR & First Aid.

Our programs focus on encouraging character growth through care, honesty, respect, responsibility, and faith. You can be sure that our Y staff is committed to developing these traits through our Back to School program activities, and that all activity areas are well supervised.

Our average Elementary Afterschool staff to student ratio is 1:10 and no more than 1:15 for our Middle School program. By selecting our Back to School programming, you are investing in a safe, fun, educational, and memorable experience for your child.



# DAILY LOGISTICS

Our Elementary and Middle School Afterschool Programs operate every day that your child's school is in session. At the end of the school day, depending on the school, students either remain at their school for Afterschool under the care of Y staff or a Y bus transports them to their appropriate Afterschool location.

The programs operate from the end of the school day until 6:00 P.M. All students must be picked up by 6:00 P.M. by their guardian(s) or any additional person listed on their pick-up form. Students who are picked up late will be charged \$5 for every ten minutes that they are late.

Child care for teacher workdays, holidays, intercession, and camps will be held at First Baptist Church of Leland, Midtown YMCA, Nir Family YMCA and Ogden YMCA Activity Center. Students may be dropped off from 7am to 9am and picked up from 4pm to 6pm. Teacher workdays, holidays, intercession, and camps are an additional cost to the program. Please be sure to pack a swim suit, towel, and lunch on each of these days; an email will go out to all registered parents before the week begins outlining the field trips and all other pertinent details for these days.

## 2021-2022 YMCA Elementary Afterschool Locations

### ♦Anderson Elementary

### ♦Bellamy Elementary

### ♦Blair Elementary

### ♦Carolina Beach Elementary

### ♦Castle Hayne Elementary

### ♦Codington Elementary

### ♦Eaton Elementary

### ♦Gregory Elementary

### ♦Holly Tree Elementary

### ♦Murrayville Elementary

### ♦Ogden Elementary

### ♦Parsley Elementary

### ♦Porters Neck Elementary

### ♦Wrightsville Beach Elementary

### ♦Nir Family YMCA

2710 Market Street

Wilmington, NC 28403

Bradley Creek

Coastal Preparatory Academy

College Park

Forest Hills

Rachel Freeman

Snipes Academy

St. Mark Catholic School

St. Mary Catholic School

Winter Park

Wrightsboro

### ♦Midtown YMCA

709 George Anderson Drive

Wilmington, NC 28412

Alderman

CFCI

Mary C. Williams

Sunset Park

Wilmington School of the Arts

### ♦First Baptist Church of Leland

517 Village Road NE

Leland, NC 28451

Belville

Lincoln

Roger Bacon Academy

Town Creek

## 2021-2022 YMCA Middle School Afterschool Locations

### ♦Nir Family YMCA

2710 Market Street

Wilmington, NC 28403

Holly Shelter

Noble

Trask

Williston

### ♦Midtown YMCA

709 George Anderson Drive

Wilmington, NC 28412

CFCI

Murray

Myrtle Grove

Roland-Grise

### ♦GLOW Academy

4100 Sunglow Drive

Wilmington, NC 28405

GLOW

*\*This location is  
100% FREE and is  
made possible by  
GLOW and the  
generous  
contributions of this  
community.*



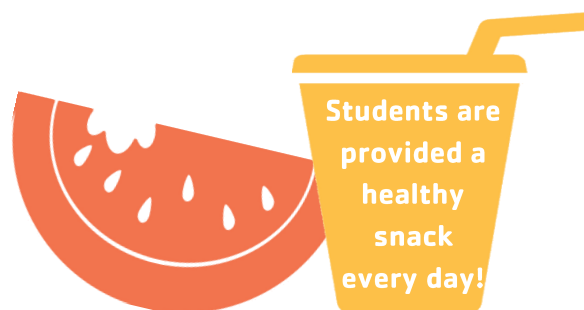
# YMCA ELEMENTARY AFTERSCHOOL PROGRAM

Serving students in grades K-5




With a focus on safety, health, social growth, physical education, and academic enhancement, the Y Afterschool Program serves elementary students with a variety of programmatic and activity options to enhance your child's confidence, enrich his or her social and physical development, explore and develop interests and talents, and encourage self-expression.

On a weekly basis, children are given the opportunity to partake in a variety of physical activities, including sports, team building, swimming (Nir Family YMCA), outside play, group exercise, STEM activities, read-alouds, and more. We offer a healthy snack, and provide a minimum of 30 minutes of structured homework help and 30 minutes of physical activity each day. The Y Afterschool program follows Healthy Eating and Physical Activity (HEPA) standards and takes pride in promoting a healthier lifestyle by engaging children in their well being of spirit, mind, and body. The Y Afterschool program is grounded on the character development traits of caring, honesty, respect, responsibility and faith.

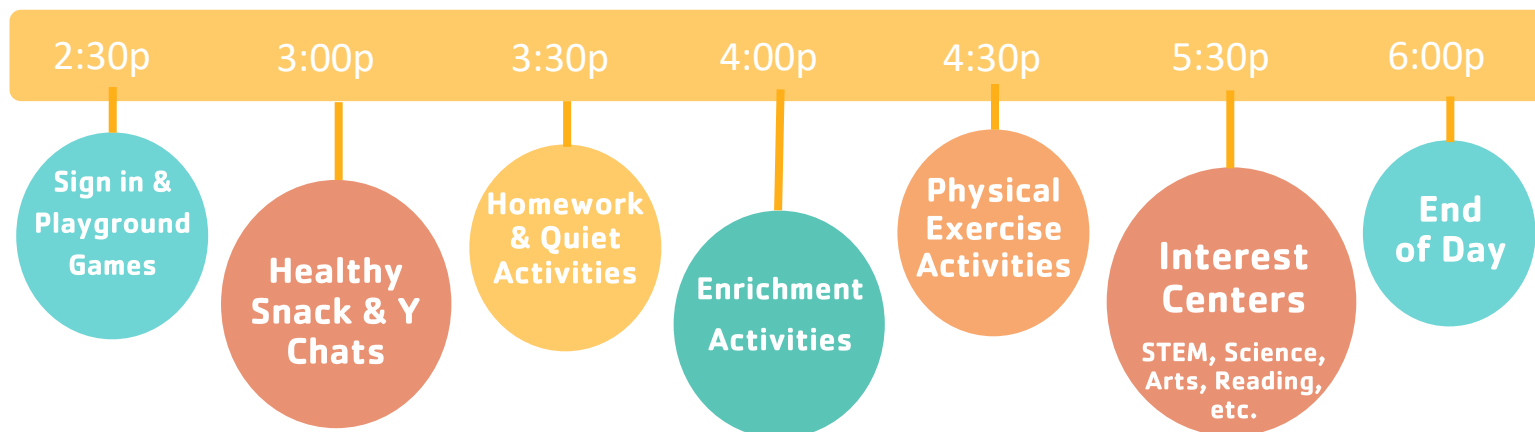
The Afterschool program operates each day of school until 6pm.



## 2021-2022 Afterschool Program Fees

	Member & Teacher Fees	Non-member Fees
<b>Registration Fees</b> 	<b>\$35</b>	<b>\$35</b>
<b>Weekly Elementary School Fees</b> 	<b>Part-time: \$43</b> Up to 3 days per week  <b>Full-time: \$55</b> Up to 5 days per week	<b>Part-time: \$53</b> Up to 3 days per week  <b>Full-time: \$65</b> Up to 5 days per week
<b>Half Days</b> 	<b>Included in program fees</b>	<b>Included in program fees</b>

**Sample Afterschool Day** (times & activities may vary by school)



# YMCA MIDDLE SCHOOL AFTERSCHOOL PROGRAM

Serving students in grades 6-8

Similar to the YMCA's Elementary Afterschool Program, the YMCA's Middle School Afterschool Program focuses on safety, health, social growth, physical education, and academic enhancement. The Y After-school Program serves middle school students with a variety of programmatic and activity options to enhance your child's confidence, enrich his or her social and physical development, explore and develop interests and talents, and encourage self-expression.

In the Middle School Program, while students will certainly have the opportunity for an array of activities, the YMCA has a higher focus on physical fitness for this age group. On a daily basis, students will have an opportunity to complete homework, eat healthy snacks, set short-term and long-term fitness goals, identify fitness activities that will help accomplish fitness goals, track fitness progress in a monthly calendar, and compare what was planned to what was accomplished.



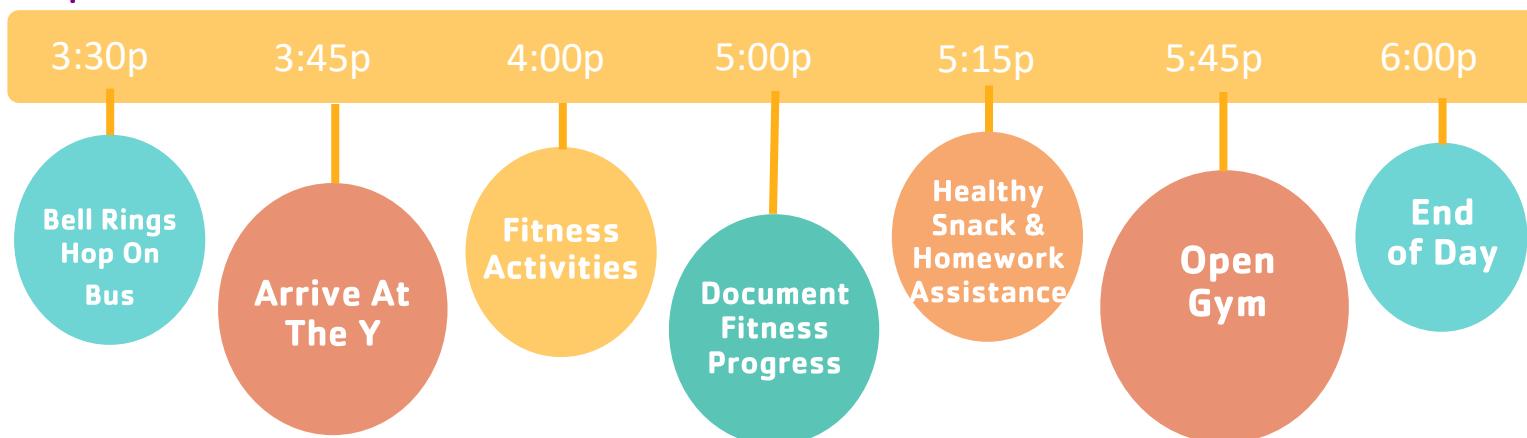
Based upon locations, students will have the opportunity to participate in strength training, cardio sessions, yoga, high intensity interval training, weight training, and more under the guidance of trained staff. We expect students to obtain new fitness levels as we aim to help students succeed both academically and physically!

## 2021-2022 Afterschool Program Fees

	Member & Teacher Fees	Non-member Fees
<b>Registration Fees</b> ➡	<b>\$35</b>	<b>\$35</b>
<b>Weekly Elementary School Fees</b> ➡	<b>Part-time: \$38</b> Up to 3 days per week  <b>Full-time: \$50</b> Up to 5 days per week	<b>Part-time: \$48</b> Up to 3 days per week  <b>Full-time: \$60</b> Up to 5 days per week
<b>Half Days</b> ➡	<b>Included in program fees</b>	<b>Included in program fees</b>



### Sample Afternoon:





# TEACHER WORKDAY, HOLIDAYS, & INTERCESSION

When school is out, the Y is in! During Intercession breaks, Christmas break, Spring break, Teacher Workdays, and Holidays, children have the opportunity to come to the Y for a full day of activities where children will learn new sports and games, create arts and crafts, develop good sportsmanship, be a part of a team, build new friendships, swim, learn to be healthy, and much more! YMCA locations and dates are determined by the school calendar and schools we serve. Please be extra cognizant as you sign up for these days and make note of which location you are registering your child to attend.



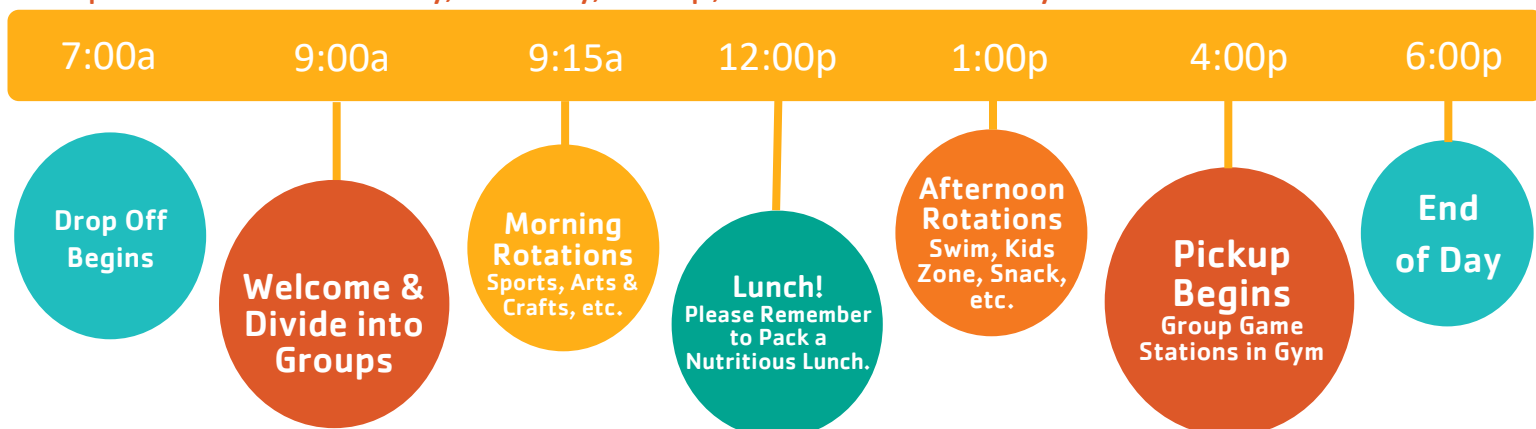
During each full week, we will take at least two field trips that will engage the mind and body and give students the opportunity to explore their local community and engage in activities outside of the Y such as Camp Kirkwood, Aquarium at Fort Fisher, Flip N Fly, and more. Single teacher workdays and holidays will mainly be held at First Baptist Church of Leland, Midtown YMCA, Nir Family YMCA, and Ogden YMCA Activity Center, but may include a trip to the local park. Your child will be active, have fun, and will want to keep coming back day after day.

Registration is separate from Afterschool, locations can fill to capacity, and we encourage you to register today for all dates you need; please register no later than five business days in advance so that we can ensure proper staffing, supplies, food, and a fun-filled schedule.

2021-2022 Program Fees	Member & Teacher Fees	Non-member Fees
<b>Intercession and Spring Break</b>	<b>5 Day: \$135</b> <b>3 Day: \$81</b>	<b>5 Day: \$145</b> <b>3 Day: \$87</b>
<b>Teacher Workdays and Holidays</b>	<b>\$27 per day</b> Dates and locations vary by school calendars	<b>\$29 per day</b> Dates and locations vary by school calendars
The program will be closed Sept 6, Nov 25, 26, Dec 23, 24, 30, 31, and May 30 in order for staff to spend quality time with family and friends and prep for other upcoming programs.		



## Sample Teacher Workday, Holiday, Camp, & Intercession Day





"My girls made wonderful friends and learned how to help each other. They enjoyed working with the younger kids."

-Y Parent



"My son is learning to stay active. He has become more self confident and has taken on new things."

-Y Parent



"My daughter is already looking forward to becoming an LIT, and she is only 9 years old!"

-Y Parent



"My child knew no one and had never played soccer. This program totally gave him confidence and a good feeling about himself. Thank you!"

-Y Parent



"Afterschool has been a great experience for our family, and we are so thankful that our child can now attend the Y through her middle school years."

-Y Parent

