

CLEVELAND

INDEPENDENT SCHOOL DISTRICT

CLEVELAND ISD
DISTRICT WIDE IMPROVEMENTS 



CONSTRUCTION UPDATE

July 2020

PROJECT UPDATE

JULY 2020

CLEVELAND HIGH SCHOOL ADDITION & RENOVATIONS



GYMNASIUM FLOOR STRIPING



BRICK PAVERS AT COURTYARD



FLOORING AT WEIGHT ROOM EXPANSION

CONSTRUCTION UPDATE

CONSTRUCTION UPDATE

- 1 - The following areas are substantially complete:
 - Administration
 - Classroom Wing
 - Dining Hall & Kitchen
 - Athletics Areas
 - Theater & Stage
- 2 - Punch List items are being addressed within these areas
- 3 - Continuation of work within Gymnasium
- 4 - Renovation work within former food service and cafeteria areas

LOOKING FORWARD

- 1 - Installing finishes and fixtures within renovation areas
- 2 - Continuation of work within Cosmetology Lab
- 3 - Continuation of chiller replacement



CLEVELAND ISD
CLEVELAND HIGH SCHOOL



Designing Schools . . . With Kids in Mind!

www.claycomb.net



CLEVELAND ISD

HIGH SCHOOL ADDITION & RENOVATIONS

CONSTRUCTION PHOTO



JULY 2020



CLEVELAND ISD

HIGH SCHOOL ADDITION & RENOVATIONS

CONSTRUCTION PHOTO



JULY 2020



CLEVELAND ISD

HIGH SCHOOL ADDITION & RENOVATIONS

CONSTRUCTION PHOTO



JULY 2020



CLEVELAND ISD

HIGH SCHOOL ADDITION & RENOVATIONS

CONSTRUCTION PHOTO



JULY 2020



2ND FLOOR PLAN & RENOVATIONS



CLEVELAND ISD

HIGH SCHOOL ADDITION & RENOVATIONS

CONSTRUCTION PHOTO



JULY 2020



2ND FLOOR PLAN & RENOVATIONS



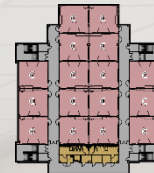
CLEVELAND ISD

HIGH SCHOOL ADDITION & RENOVATIONS

CONSTRUCTION PHOTO



JULY 2020



2ND FLOOR PLAN & RENOVATIONS



CLEVELAND ISD

HIGH SCHOOL ADDITION & RENOVATIONS

CONSTRUCTION PHOTO



JULY 2020



CLEVELAND ISD

HIGH SCHOOL ADDITION & RENOVATIONS

CONSTRUCTION PHOTO



JULY 2020



2ND FLOOR PLAN & RENOVATIONS



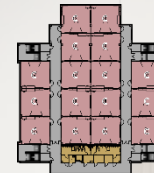
CLEVELAND ISD

HIGH SCHOOL ADDITION & RENOVATIONS

CONSTRUCTION PHOTO



JULY 2020



2ND FLOOR PLAN & RENOVATIONS



CLEVELAND ISD

HIGH SCHOOL ADDITION & RENOVATIONS

CONSTRUCTION PHOTO



JULY 2020

PROJECT UPDATE

JULY 2020

COTTONWOOD ELEMENTARY SCHOOL



DINING ROOM



FOLDABLE PARTITION & STRIPING AT GYMNASIUM



MAIN CORRIDOR BALCONY GUARDRAILS & PANELING

CONSTRUCTION UPDATE

CONSTRUCTION UPDATE

- 1 - The following areas are substantially complete:
Classroom Wing
Dining Room & Kitchen
Administration
Gymnasium
- 2 - Punch list items are being addressed within these areas
- 3 - Continuation of work within the Media Center
- 4 - Continuation of work at exterior shade features

LOOKING FORWARD

- 1 - Installation of finishes within Media Center
- 2 - Installation of site ingress/egress by developer



CLEVELAND ISD
COTTONWOOD ELEMENTARY SCHOOL



Designing Schools . . . With Kids in Mind!

www.claycomb.net



CLEVELAND ISD
COTTONWOOD ELEMENTARY SCHOOL

CONSTRUCTION PHOTO



JULY 2020



CLEVELAND ISD

COTTONWOOD ELEMENTARY SCHOOL

CONSTRUCTION PHOTO



JULY 2020



FIRST FLOOR PLAN



CLEVELAND ISD
COTTONWOOD ELEMENTARY SCHOOL

CONSTRUCTION PHOTO



JULY 2020



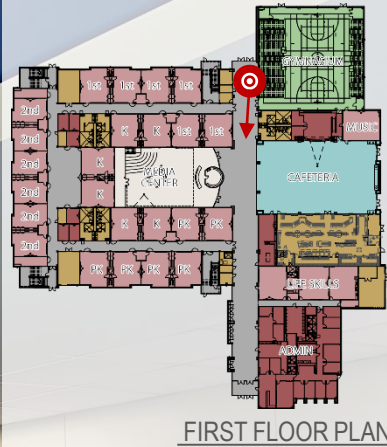
CLEVELAND ISD

COTTONWOOD ELEMENTARY SCHOOL

CONSTRUCTION PHOTO



JULY 2020



FIRST FLOOR PLAN



CLEVELAND ISD

COTTONWOOD ELEMENTARY SCHOOL

CONSTRUCTION PHOTO



JULY 2020



FIRST FLOOR PLAN



CLEVELAND ISD
COTTONWOOD ELEMENTARY SCHOOL

CONSTRUCTION PHOTO



JULY 2020



SECOND FLOOR PLAN

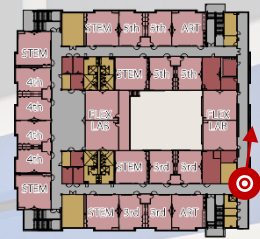


CLEVELAND ISD
COTTONWOOD ELEMENTARY SCHOOL

CONSTRUCTION PHOTO



JULY 2020



SECOND FLOOR PLAN

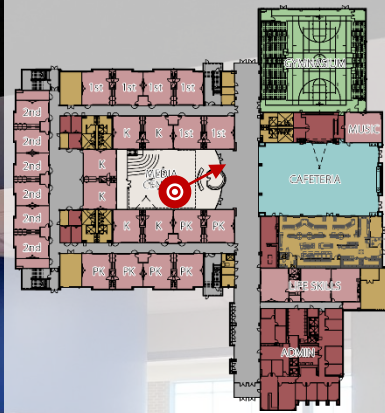


CLEVELAND ISD
COTTONWOOD ELEMENTARY SCHOOL

CONSTRUCTION PHOTO



JULY 2020



FIRST FLOOR PLAN

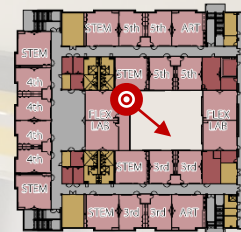


CLEVELAND ISD
COTTONWOOD ELEMENTARY SCHOOL

CONSTRUCTION PHOTO



JULY 2020



SECOND FLOOR PLAN



CLEVELAND ISD
COTTONWOOD ELEMENTARY SCHOOL

CONSTRUCTION PHOTO



JULY 2020

CLEVELAND

INDEPENDENT SCHOOL DISTRICT

WE APPRECIATE
THE OPPORTUNITY TO SERVE YOU!
THANK YOU!



Designing Schools . . . With Kids in Mind!

www.claycomb.net