



Public Parks and Trails in Avon & Washington Township

TOWN OF AVON, IN
UPDATED JUNE, 2019

Public Parks

- **Avon Town Hall Park**

- Located at 6570 E US Hwy 36, Avon, IN 46123
- 83 acres
- Hours: Dawn-Dusk
- Parking available at Avon Town Hall
- Avon Town Hall Park is filled with amenities for your friends and family to enjoy: playgrounds, paved trails, picnic tables, an eighteen-hole disc golf course, ping pong tables, bocce court and the only free, public outdoor radio control race track in Hendricks County. The park also has a large pond, that is available for catch-and-release fishing (requires a state fishing license). Please call the Town of Avon with questions or concerns at 317-272-0948. www.avongov.org.



- **World War II Memorial Park**

- Located at the NW corner of County Road 100 S and Dan Jones Rd
- 1 acre
- Hours: Dawn-Dusk
- Parking Available at Pine Tree Elementary School.
- The World War II Memorial Park is a one-acre park that honors the men and women who served in World War II, featuring an individual marker for each branch of our armed services. Please call the Town of Avon with questions or concerns at 317-272-0948. www.avongov.org.



- **Gable Park**

- Located off Gable Drive, behind Ashley Furniture in Avon
- 5 acres
- Hours: Dawn-Dusk
- Parking available behind Ashley Furniture
- Gable Park is located by the Avon Salt Barn off of Gable Drive, featuring a three-acre fishing pond and a pet-friendly green space. The pond allows catch-and-release fishing, but like the Town Hall Park pond, requires a state fishing license.
- Please call the Town of Avon with questions or concerns at 317-272-0948.
www.avongov.org.



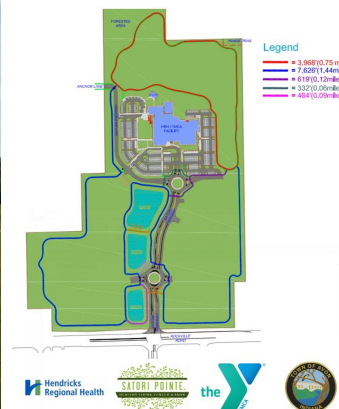
- **Settlement Neighborhood Park**

- Located on Liatris Drive in the Settlement Neighborhood Association
- 2 acres
- Hours: Dawn-Dusk
- Parking is available on northern end of Liatris drive by the soccer fields.
- Features soccer, baseball, and softball fields as well as green space on the northern end of the neighborhood. Property not managed by the Town of Avon. Please call The Settlement Neighborhood Association with questions or concerns.



- **Hendricks Regional Health YMCA Park**

- Located at 301 Satori Parkway, Avon, IN
- 7.5 acres
- Hours: 5 AM – 10 PM
- Parking is located at HRH YMCA
- Amenities include a walking trail, pet-friendly green space, and a number of athletic fields for soccer, baseball, and softball that are open to the public.
- Please contact the Hendricks Regional Health YMCA with questions or concerns.



- **Washington Township Park**

- Located at 115 S. County Rd 575, Avon, IN 46123
- 142 acres
- Hours: 7 AM - 7 PM (October 1st - March 31st); 7 AM - 9 PM (April 1st – September 30th)
- Parking available at upper and lower level of park.
- The Washington Township Park is one of the largest parks in the area, and has a number of unique amenities including a twenty-four sq. ft. gazebo, covered picnic areas, an outdoor fitness station, two stocked fishing ponds, an amphitheater, two playgrounds, a basketball court, a volleyball court, and the historic Whipple Iron Truss Bridge.
- Please contact Washington Township Parks with questions or concerns at 317-745-0785.



- **Helen Pecar Memorial Park**

- 5203 East County Road 150 North, Avon, IN
- 48 acres
- Hours: 7-9PM (Park); 10AM-3PM (Nature Center)
- Parking available at the park office.
- Park amenities include a playground, eight campsites, outdoor classroom, bird viewing, bird aviary, a pond, and a low ropes challenge facility.
- Please contact Washington Township with questions or concerns at 317-745-0785.



- **Ronald Reagan Forest Preserve**

- Located at the Southeast corner of Ronald Reagan and 100 N
- 2.3 acres
- Protected forested/green space owned by the Town of Avon.

- **Winton Meadows Park**

- Located on the west side of CR 900 E next to Winton Meadows
- 24 acres
- Forested area alongside Winton Meadows with natural trails.
- Please contact the Town of Avon with questions or concerns at 317-272-0948.



- **Future Parks**

The Town of Avon owns land for future parks at the northeast corner of Dan Jones and 150 South and also along the east side of Dan Jones Road, south of Bradford Road.

Trails

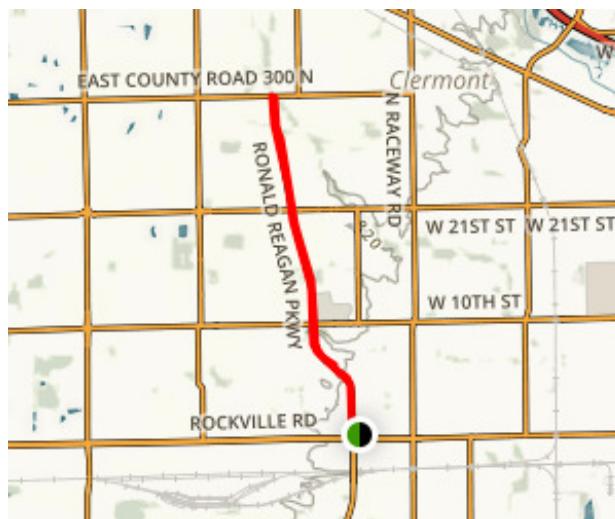
- **Bicentennial Trail (0.5 miles within Avon, 1 mile total)**

- The Bicentennial Trail links the trails of Avon and Brownsburg between CR 200 North in Avon and the B&O Trail in Brownsburg. It was one of eighty statewide Legacy Projects to honor the state's history. Contact the Town of Avon with questions or concerns.



- **Ronald Reagan Parkway Trail (7 miles in Avon)**

- Located alongside the Ronald Reagan Parkway and the Ronald Reagan Forest Preserve, this trail runs north-south and is a great option for all walkers, bicyclers, runners, dog-walkers, or otherwise.
- Parking is available at IU West Hospital (or the nearby B&O Trail lot).



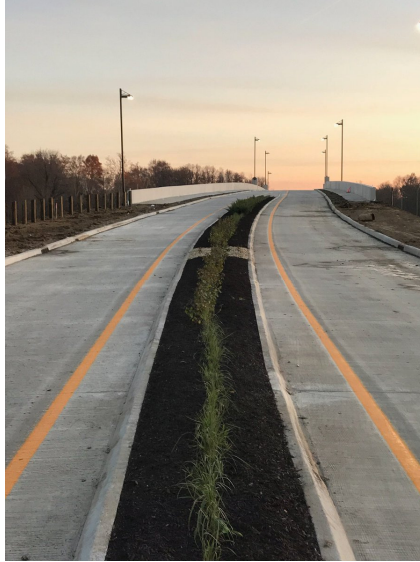
- **Town Hall Park Trail (2 miles)**

- Avon Town Hall Park Trail runs right through the middle of one Avon's most scenic parks, with access to the Park's ponds, disc golf course, and ample green space for recreation (see www.avongov.org for a detailed map of the trail).
- Parking available at Avon Town Hall.



- **Avon Avenue Trail (.75 miles)**

- As part of a larger road/roundabout project to improve traffic flow on Avon Avenue, this new trail runs north and south, and allows residents to safely walk a major thoroughfare in town, as well as cross over the new Avon Avenue Bridge.
- Parking is available at Avon Middle School South and Avon Intermediate School East.



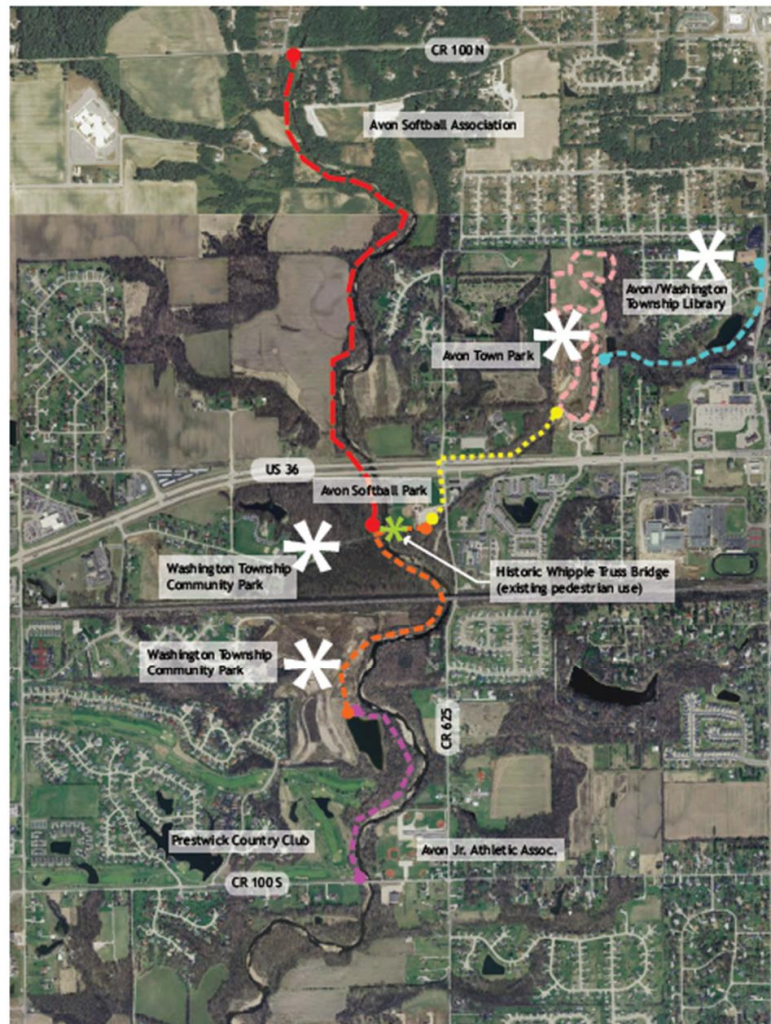
- **Oaks of Avon Trail (1 mile)**

- Extends from CR 100 North to CR 200 North
- Near Oaks of Avon and Winton Meadows Subdivisions connecting to the CR 100 North trail and Bicentennial Trail



- **White Lick Creek Trail (2.3 miles)**

- The White Lick Creek Trail is a major Town of Avon initiative designed to create a scenic, multi-use north-south trail that follows White Lick Creek. Long term, the trail will connect the Plainfield Recreation Center to Williams Park in Brownsburg by way of Washington Township Park.
- Parking is available nearby at Avon Town Hall, Washington Township Park, and the trailhead on CR 100 North, west of the AJAA baseball/softball complex.
- Extends from CR 100 South to CR 100 North.



1 Phasing Diagram



- Phase 4 Project
- - - - - Phase 1 Project (Constructed 2007)
- - - - - Phase 2 Project (Constructed 2012)
- - - - - Proposed Phase 2b
- - - - - Phase 3 Project
- - - - - Town Hall Park Internal Trail Network

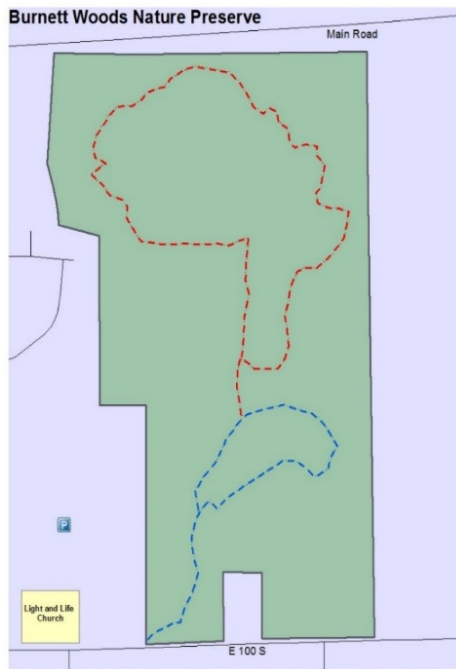
(Map of White Lick Creek Trail Project)

- **Town Hall Park-Washington Township Park Trail (0.4 Miles)**

- An additional trail along County Road 625 East connects the Avon Town Hall trail system to Washington Township Park.
- See “Phase 3 Project” on “Map of White Lick Creek Trail Project” on pg. 8.

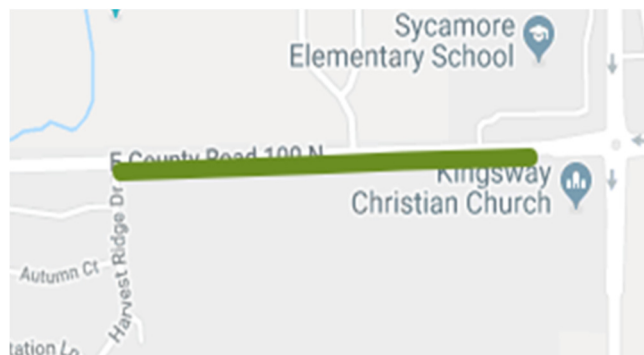
- **Burnett Woods (1.5 miles)**

- An 80-acre piece of land owned and managed by the Central Indiana Land Trust. The woods feature a 1.5-mile loop trail, and is densely populated with black walnut, oak, hickory, maple, and tulip poplar trees, as well as a diverse mixture of wildflowers.
- Located at 8264 E. CR 100 South.
- Parking is available nearby at the Light and Life Methodist Church.



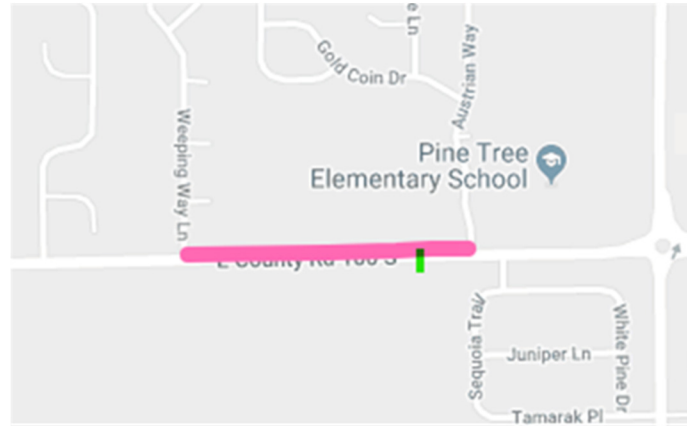
- **CR 100 North Trail (0.75 miles)**

- Runs from Harvest Ridge Drive to the Oaks of Avon Trail, and is excellent for running and walking for individuals of all levels.
- Parking for the CR 100 North trail is located at Sycamore Elementary.



- **CR 100 South Trail (1 miles)**

- Runs from Avon Avenue to Dan Jones Road.
- Parking for the CR 100 South trail is located at Hickory Elementary School or Pine Tree Elementary School.



For more information about parks, trails, and other outdoor amenities in Avon and Washington Township, visit the Parks and Recreation page on www.avongov.org.

Avon Parks: www.avongov.org

Washington Township Parks: www.washingtontwpparks.org