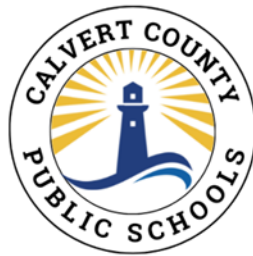


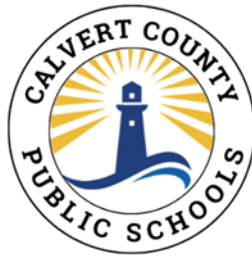
Educational Facilities Master Plan

FY 2026



Antoine S. White, President
Inez N. Claggett, Vice President
Dawn C. Balinski, Member
Lisa M. Grenis, Member
Jana L. Smith-Post, Member
Jordan M. Hayes, Student Member
Dr. Andraé Townsel, Superintendent

BOARD OF EDUCATION OF CALVERT COUNTY
Prince Frederick, Maryland 20678



EDUCATIONAL FACILITIES MASTER PLAN
FOR FISCAL YEAR 2026

Prepared in accordance with COMAR Section 14.39.02.02

WEB ACCESSIBILITY MESSAGE

Some sections of this document were not created by Calvert County Public Schools and cannot be made accessible. If you should require assistance in obtaining details or information contained within this document, please contact the Calvert County Public Schools Board of Education at 443-550-8000.

TABLE OF CONTENTS

I. EDUCATIONAL FACILITIES MASTER PLAN

Vision for the Calvert County Public Schools.....	9
District Profile.....	9
Location	10
Background Data.....	10
Population Trends.....	12
Population Projections	14
Population Counts, Estimate and Projection	15
Table I - Residential Building Permits.....	17
Community Analysis.....	17
Planning.....	20
Staff Ratios	24
Organization Pattern	24
School Attendance Areas	24
Property Disposal.....	25
Transportation.....	25
Human Resources	26
General Education Learning Environments in the 21 st Century.....	27
Special Education.....	28
Career & Technology Education.....	29
School Site Analysis - Southern Region	33
School Site Analysis - Central Region	34
School Site Analysis - Northern Region.....	37
School Site Analysis - Calvert Regional Facilities	39
Birth Rates	41
Table II - Births/Deaths Ratio	41
Instructional Plan Support Data	41
Public and Private School Enrollment	42
Table III - Enrollment.....	43
Graduation Rate of Calvert County High Schools.....	44
Table IV -Graduation Rate of Calvert County High Schools.....	44
Enrollment Projections	45
Table V - Enrollment Projections	46
FTE Enrollment Projections.....	47
FTE Enrollment Projections by Grade for 2033	71

II. FACILITIES INVENTORY

Appeal Elementary, Barstow Elementary, Beach Elementary, Calvert Elementary, Dowell Elementary, Huntingtown Elementary, Mt. Harmony Elementary	74
--	----

Mutual Elementary, Patuxent Elementary, Plum Point Elementary St. Leonard Elementary, Sunderland Elementary, Windy Hill Elementary	75
Calvert Middle, Mill Creek Middle, Northern Middle, Plum Point Middle, Southern Middle, Windy Hill Middle.....	76
Calvert High, Huntingtown High, Northern High, Patuxent High, Career and Technology Academy, Calvert Country, Hunting Creek Annex	77
III. FACILITY NEEDS	
Facility Needs Summary	80
Systemic Projects Summary	81
Projected School Needs	85
Letter from Maryland Department of Planning	87
Non-Discrimination Statement	89
Affidavit of Approval - Board of Education Meeting on June 13, 2024	90
Letter from Calvert County Department of Planning & Zoning	91
IV. APPENDIX	
Appendix A – Location	94
Appendix B – Election Districts	95
Appendix C – Public Facilities	96
Appendix D – Water Plan.....	97
Appendix E – Projected Regional Sanitary Districts.....	98
Appendix F-1 – Priority Preservation Areas Map.....	99
Appendix F-2 – Future Land Use Map	100
Appendix G – Elementary School Boundaries	101
Appendix H – Middle School Boundaries.....	102
Appendix I – High School Boundaries	103
Appendix J – Existing Feeder Plan	104
Appendix K – Former School Inventory.....	105
Appendix L – School Closing Policy & Procedures 1730 & 1730.1	106
Appendix M – Notification Chain Procedures 1510.2	109
Appendix N – Employee Working Hours Procedures 1510.3.....	110
Appendix O – School Facility General Information.....	113
Appendix P – School Geographical Attendance Policy & Procedures	181
Appendix Q – Directory of Schools.....	195

THIS PAGE LEFT BLANK

SECTION I

EDUCATIONAL FACILITIES MASTER PLAN

EDUCATIONAL FACILITIES MASTER PLAN

The philosophy, direction, and outcomes for this school system are determined by the Board of Education of Calvert County, with the assistance of the Superintendent and the professional staff. Goals of the staff, therefore, reflect the educational objectives as outlined in the basic philosophy of the school system.

Input for the philosophy, direction and outcomes is received from the professional staff, citizen advisory committees, parent-school organizations, and other similar community groups and agencies. Such input is essential to ensure relevance of the school program to perceived community needs.

Calvert County Public Schools (CCPS) and support facilities are well maintained to best serve the rigors of the instructional programs offered to our students and also those programs offered by our County Government and private interests.

The following text provides the basis for which our facility needs are established. It further reflects on our operating procedures, planning and community analysis, our inventory evaluation, and enrollment data.

Vision Statement

To produce graduates who are responsible citizens with career and educational choices in the 21st century.

Mission Statement

The Calvert County Board of Education ensures excellence in education for our students through vigilant oversight, sound policies, and meaningful community engagement.

District Profile

Calvert County Public Schools prides itself on educating and preparing each student to succeed in a changing world. Serving more than 15,000 students, the district must rise to the challenge of meeting the unique needs of every student. CCPS, the 13th largest by student population amongst the 24 school systems in the state, consistently ranks among Maryland's top districts based on State assessments. CCPS' high achievement, numerous options for career and technology programs, school climate, and support services for students attract many families to the area.

LOCATION

Calvert County is a peninsula located approximately 30 miles southeast of Washington, D. C. and approximately 55 miles south of Baltimore. Maryland State Route 4, a four-lane highway, provides the main link for Calvert County residents to the greater Washington/Baltimore/Annapolis Metropolitan area. Maryland State Route 2 provides access to Annapolis and Anne Arundel County, with Route 231 providing the link to Charles County to the west. Route 4 South and the Thomas Johnson Bridge provide the link to St. Mary's County and the Patuxent Naval Air Station. This link is critical for residents employed at this facility.

BACKGROUND DATA

There are two incorporated towns, Chesapeake Beach and North Beach, situated in the Northeast quadrant of the County and seven unincorporated Town Centers. The Town Centers are from north to south, Dunkirk, Owings, Huntingtown, Prince Frederick, St. Leonard, Lusby, and Solomons. All of the Town Centers are situated along the Maryland Route 2 and 4 corridor and provide the commercial and service-related businesses for Calvert residents.

The consequence of being a bedroom community to the Washington, Baltimore and Annapolis metropolitan areas is that the majority of wage earners are required to travel out of the county for employment. This scenario has not only created traffic congestion on the main arteries, but it also diminishes the time citizens can dedicate to family and civic activities. Indirectly, many children are in situations where they are enrolled for an extended period of time each day and/or enrolled in day care and after-school programs. This scenario has a direct impact on school services.

Economic development that will support skilled craftsmen, technical trades, and professional employment opportunities continues to be elusive. Options that will allow for a reduction in the number of residents who must drive out of the county each day for employment continues to be a county priority. Although some small business enterprises

have opted to locate in the county, more efforts continue to be focused on attracting additional businesses to the county.

The COVID-19 pandemic created not only a heightened awareness of the possibilities of working from home, but it also jumpstarted a true expansion of affordable broadband to underserved areas in the county. Both these developments could help explain the large increase in new business start-ups that were seen in Calvert, Maryland, and across the U.S. and gives bedroom communities such as Calvert hope for an increased and more diverse economic base.

Traffic congestion along the Route 2 and Route 4 corridor through Calvert County continues to be a major concern for both our local government and the Maryland State Highway Administration (MSHA). The Town Centers of Dunkirk, Prince Frederick, Huntingtown and Solomons experience rush hour delays and increased traffic accidents related to the congestion. The Thomas Johnson Bridge connects Calvert to its neighbor to the south, St. Mary's County and the Patuxent Naval Air Station, via a 2-lane bridge, which experiences frequent delays during peak travel times. In 2015, MSHA completed a study of a section of Rt 4 from Patuxent Point Parkway, to Rt. 235 in St. Mary's County, stemming from daily commuter traffic congestion. The future project, designed to improve existing capacity and traffic operations, is on hold, due to funding. Improvements along Rt 2/4 between Fox Run Boulevard and Route 231 in Prince Frederick are complete. To reduce congestion, a multi-phased project widened this major artery, from four lanes to six lanes, and included turn lanes.

On the northern end of the county, MDOT SHA completed improvements along the the MD 4 / Mount Harmony Road Intersection Improvement project. The \$2 million intersection improvements included constructing a concrete channelization island, providing a right-turn only movement from Mount Harmony Road onto northbound MD 4, as well as drainage reconstruction at the intersection.

In an effort to enhance safety and operations, MDOT SHA is currently in the initial design phase to make intersection improvements at three locations along the MD 231 corridor, in central Calvert. These include signal modifications at Skipjack Road, creating

designated left turn lanes at Skipjack and Adelina Road (MD 508), as well as necessary drainage improvements.

In keeping with the Prince Frederick Town Center Master Plan, the County has been building portions of the “loop road” project in Prince Frederick. The Armory Road to Main Street section of the east side “loop road” is complete. The west side of the “loop road” has been completed from Auto Drive to Yearling Drive, located south of MD 231.

POPULATION TRENDS

Calvert County’s population has grown by 1,939 residents between April 1, 2020, the census estimate base date and July 1, 2023, a growth of 2.1 percent, as reported by the Maryland Department of Planning. The county’s population as a whole, has been aging. Between 2010 and 2020, the percentage of residents, 65 and older, grew from 11 percent of the total population to 16 percent, where it is holding in 2022. Slow growth measures of the past, enacted by previous Boards of County Commissioners, limited new housing inventory over the last few years.

High home prices have been a barrier to entry for young couples. In recent years, these ripple effects have begun to subside, through the on-going efforts to focus housing and commercial development within Town Centers. 2020 and 2021 saw increased residential construction activity over previous levels, however as of 2022, new housing starts and the turnover rate for existing home inventory have decreased, and the trend continues in 2023. Housing units sold in 2023 in Calvert County decreased by 27.4% compared to 2022 whereas the median sales price increased by 2.4% to \$425,000, during that same period. (source Maryland Association of Realtors) New housing starts are discussed later in this section, however it is important to note that of 86 residential permits issued in 2023, 77 were for single family homes, with an average value of \$402,245. The increase in residential mortgage interest rates coupled with escalating prices are contributing factors, and may help explain some of the decrease in sales.

The most recent population estimate available from the U.S. Census Bureau for July

1, 2023 is 94,728. The estimated county population for January 1, 2024 is 95,778, a 0.99% increase from 2023 (source Calvert County Department of Planning & Zoning, April 2024).

In 2023, 86 residential building permits were issued throughout the county, representing a 23% decrease over 2022. 12 percent of permits issued stem from one major subdivision, located in the first district and recorded several years ago. The associated lots within this subdivision are now finished.

A few smaller single-family subdivisions are in various stages of planning in the Plum Point and Huntingtown areas. Additionally, several high-density Townhome subdivisions as well as the next phase of an apartment complex are advancing in the planning stages in Prince Frederick. Lastly, a major multi-family subdivision in the southern part of the county continues to advance in the planning stages, as well.

POPULATION PROJECTIONS

Calvert County Department of Planning & Zoning relies on Maryland Department of Planning's projections rather than develop its own. The County produces a population estimate for Jan. 1st of the current year based upon the Census Bureau's population estimate for July 1st of the previous year and use & occupancy permits for the subsequent six months. State projections are based primarily on birth/death rates and county job opportunities as a factor of immigration. The U.S. Census Bureau's estimate of Calvert County's population for July 1, 2023 is 94,728. The county's population estimate for January 1, 2024 is 95,778.

The median residential sales price in Calvert County remains one of the highest in Maryland. Based on data provided through Maryland Department of Planning, residential sales decreased by 27.4 percent and the annual median price increased by 6.4% between 2021 and 2022. In 2022, Calvert remained the seventh most expensive in Maryland and the most expensive county within Southern Maryland, with a median sales price of \$415,000. Based on data from the Maryland Association of Realtors, the median sales price in 2023 increased by another \$10,000 in Calvert County, to \$425,000. A majority of new housing starts continues to be in the \$400,000 or higher price range, and with the rising interest rates, such a purchase is not conducive to young couples.

The county housing stock is comprised of single-family homes, however, over the last three years, higher density developments have been growing within the Prince Frederick Town Center. These include a 249- unit apartment complex, with units ranging from 1-bedroom up to 3-bedroom units. Several townhome communities and apartments are additionally in various stages of development within the Prince Frederick area. The demand for workforce housing is seeing growth in similar higher-density developments, within the southern end of the county. A 276-unit multi-family community in Lusby continues to be in its preliminary stages of development. The completion of such residential development projects in the foreseeable future could help attract a younger workforce, who currently have limited affordable home ownership as well as rental options in the County.

Although issued permits present a skewed picture, due to 12 percent of permits originating from one major subdivision, the pattern of the growth within the county appears to be consistent with areas that are forecasted to grow. Those areas are the central part of the county surrounding the Prince Frederick Town Center and the northern part of the county which includes the Dunkirk Town Center and the Town of Chesapeake Beach. It is important to note that the Town of Chesapeake Beach, an incorporated area, is not subject to Calvert County's adequate public facility regulations.

Our student enrollment projections generally reflect a modest net increase through 2033.

See the Comparative Population Projections chart below.

POPULATION COUNTS, ESTIMATE AND PROJECTION

<u>Source</u>	<u>2020</u>	<u>2022</u>	<u>2023</u>	<u>2024</u>	<u>2025</u>
Md. Department of Planning	92,783			-	95,510
Calvert County Department of Planning & Zoning		94,740 (Jan 1)	94,840 (Jan 1)	95,778 (Jan 1)	-
Bureau of Census	92,789 (Estimate Base - April 1)	94,559 (July 1)	94,728 (July 1)		-

State projections indicate a 0.59 percent annualized growth rate between 2020 and 2025, for Calvert, compared to the overall State of Maryland annualized growth rate of 0.68 percent. State projections are based primarily on birth/death rates and county job opportunities as a factor of immigration. Factors that continue to attract new families to Calvert County include, but are not limited to, the following:

- a. The proximity to Annapolis, Baltimore and Washington, D.C.

- b. The excellent reputation of the Calvert County Public School System.
- c. The Patuxent River Naval Air Station and the related businesses moving into the area.
- d. A sound county fiscal program has helped to minimize increases to the property tax rate while maintaining the county's AAA bond rating. In 2019, the county lowered the tax rate from \$0.952 to \$0.937, again in 2021 from \$0.937 to \$0.932, and again in 2022 from \$0.932 to \$0.927, for a total reduction since 2018 of \$0.025. As of July 1, 2021, the county's property tax rate is sixth lowest and income tax rate is seventh lowest in the state.
- e. Many attractive natural and recreational resources: Chesapeake Bay front, Patuxent River front, State parks, County recreational parks, marinas, the Calvert Marine Museum, Annmarie Sculpture Garden and Arts Center, the development of the Solomons area as a recreational center, the County aquatic center, and over 30 miles of hiking trails.
- f. The continuation of employer telework policies started during COVID-19, that have kept previously urban residents intact within rural/suburban areas.

Previous strategies to control growth have caused developers to utilize their remaining building lot inventories, in the past, however over the last few years, there has been an increase in submission of new concept plans for major subdivisions. Although there was a rise in residential permits in 2020 and 2021, following COVID, 2022 saw a sharp decrease in the total number of permits issued. 86 permits, a majority of which were single-family detached units, were issued in 2023, compared to 112 in 2022, representing a 23 percent decrease over the previous year. This decreased trend continues from the previous year and represents the lowest number of permits over the last 9 years. The increase in residential mortgage interest rates combined with the continuation of escalating prices may help explain the decrease in permit activity for residential construction within the county. Additionally, as higher density attached-dwelling unit subdivisions progress through the planning stages, the permit activity is likely to increase over the next few years.

Recapping the permits issued in 2023, 41 permits or 48% were issued in the 1st District, with 10 permits originating from one subdivision. 24 permits, representing 28%

of total permits, were issued in the 2nd District. 21 permits or 24% were issued in the 3rd District. 5 of these permits originated from lots located in Chesapeake Beach. It is worth noting that the 2 incorporated towns of Chesapeake Beach and North Beach are located within the 3rd District and are not subject to the County's adequate public facilities regulations. See Table I.

TABLE I
Residential Building Permits

Year	1 st District		2 nd District		3 rd District		County
<u>2014</u>	82	17%	117	61%	41	22%	190
<u>2015</u>	79	26%	176	59%	44	15%	299
<u>2016</u>	91	40%	92	41%	42	19%	226
<u>2017</u>	106	42%	109	43%	38	15%	253
<u>2018</u>	37	24%	76	50%	39	26%	152
<u>2019</u>	56	35%	53	33%	50	31%	159
<u>2020</u>	99	51%	36	19%	57	30%	192
<u>2021</u>	86	42%	34	17%	84	41%	204
<u>2022</u>	40	36%	30	27%	42	37%	112
<u>2023</u>	41	48%	24	28%	21	24%	86

* Estimate

Percentage is of Total County Permits

COMMUNITY ANALYSIS

The combined effects of the economy and the County and State's measures to slow growth have reduced housing starts, over the previous decade. The Sustainable Growth and Agricultural Preservation Act of 2012 (aka, SB 236) limits major subdivisions in rural areas which potentially limits residential development to Priority Funded Areas and town centers. The town centers of Solomons, Lusby, Prince Frederick and the incorporated towns of Chesapeake Beach and North Beach are the only development centers available with adequate infrastructure to allow major residential development. The town centers of St. Leonard, Huntingtown, Owings and Dunkirk are not as well positioned in terms of public infrastructure to accommodate development.

The town centers of Lusby, Prince Frederick, and Dunkirk and the incorporated Town of Chesapeake Beach have all experienced some commercial development which

has impacted traffic during peak weekday commuting.

Over the last 15 years, the Town of Chesapeake Beach experienced an increase in residential development. This area is very marketable and has the supporting public infrastructure to permit development. The town annexed two major developments into the corporate limits, causing the schools serving this region to be over stressed. A minor redistricting a few years ago helped to alleviate this region's schools. However, the Town of Chesapeake Beach does not utilize or have an Adequate Public Facility Ordinance which would mitigate the impact on the Calvert County resources and schools. We visit this issue later in the School Site Analysis section of this document.

The Models and Guidelines for Smart Growth prepared by the Maryland Department of Planning has created a much closer integration of county planning and school facility planning efforts. This effort is most noticeable within the Prince Frederick Town Center region where our Career and Technology Academy, Calvert Middle School and Calvert High Schools are on the same campus. New county connector streets with sidewalks provide walkability and safe route connections to not only the school campus but to present and future public amenities. Community use space has been incorporated into Calvert Middle School and Calvert High School such as space for the County Parks & Recreation program and a larger auditorium. The Career and Technology Academy provides instructional space for residents of the Calvert Pines Retirement Community and students attending the College of Southern Maryland. The community aquatic center situated in Prince Frederick Town Center provides amenities to the public, plus an Olympic size pool utilized by our schools' swimming program.

There is a need for a community center to serve the 2nd Election District (middle county). The Calvert County Government has provided community centers within the 1st election district (south county) and the 3rd election district (north county). In 2015, the county purchased and converted a commercial building across the street from Calvert High School into a temporary community center. A master plan for a permanent new state of the art community and recreation facility, to be located on Fairgrounds Road in Prince Frederick, was adopted by the Board of County Commissioners in 2022, however due to the overall project budget, phasing options are being explored by County staff, with

the outdoor amenities to be prioritized first for design.

The County is developing additional parks and recreational amenities for Calvert's citizens in the northern and southern ends of the county. Ward Farm Recreation and Nature Park, located in Dunkirk, is a multi-phased project consisting of multiple playfields, trails, pavilions, and a nature center. Dominion Energy Regional Park, located in Lusby, is the former site that was used for staging and parking, by the Dominion Energy Cove Point LNG project. The master plan for this "destination park" was adopted by the Board of County Commissioners in 2020, and is anticipated to be implemented using a multi-phased approach. The overall plan includes trails, tennis courts, ballfields, picnic pavilions, and an indoor recreation center.

The need to centralize county government services has been discussed over the last few years. The need for the project arose partly from the fact that, of the more than 1,200 Calvert County Government employees, just under half of them were permanently located in 11 leased facilities in Prince Frederick. A new 103,000 square foot County Administration Building in Prince Frederick is currently under construction, as of September 2023, with the intention to house a majority of county government functions in one location to serve residents. The project is anticipated to be completed in May 2025.

In August of 2019, a new County Comprehensive Plan was adopted by the Board of County Commissioners. This policy document outlines a Future Land Use Plan, which establishes 9 land use categories, with a central focus on future development occurring within the Town Centers. In December of 2022, the Board of County Commissioners adopted amendments to the Plan that reduced or eliminated future expansions for the Huntingtown, Lusby, Prince Frederick, and Solomons Town Centers. The draft of the Prince Frederick Town Center Master Plan is complete and reflects the Phase 2 expansion of the Prince Frederick Town Center. Initial public meetings to solicit input to the Dunkirk Town Center Master Plan update were conducted in 2021. Focus areas of discussion have included land use, public infrastructure, and economic vitality. The draft plan development process commenced in Spring 2023 and is ongoing.

Calvert County has embraced the Smart Growth initiatives endorsed by the Governor and the Maryland Department of Planning. The county has adopted the Growth

Tier Map, thereby identifying areas where major and minor subdivisions may occur within the county.

Schools which are situated in or serve town centers are so noted in the school site analysis regional descriptions found later in this document.

THE PLANNING PROCESS

The annual Capital Improvement Program is completed in three phases: a survey phase, a developmental phase, and the hearing phase.

Survey Phase:

During the survey phase, an evaluation process for potential alterations or improvements is completed based upon student population projections and program needs, on a school-by-school basis. The School Facility and Maintenance Department is consulted with to identify projects which are of a systemic nature that will improve building operations, maintenance and energy consumption. Changes that may require facility alterations include instructional technology systems, grade group organization, or instructional enhancements. The various demographic projections used in the developmental phase are completed and/or updated during this phase of the process.

Project planning also requires the involvement of our Calvert County Department of Planning & Zoning to best locate new facilities within the designated growth centers of the county. Existing facilities which are situated outside of the designated growth areas and serve the designated growth areas will be considered as support infrastructure for the designated growth area. Calvert County has designated town centers as growth areas which are recognized by the State as Priority Funding Areas (PFAs). The PFAs, including the Towns of Chesapeake Beach and North Beach, are to reflect the Models and Guidelines Series 27, Smart Growth, Community Planning, and Public School Construction. Through communication with the various local government agencies, provisions for park and recreation space and community use spaces are provided within a school design.

Developmental Phase:

The development phase involves the procurement of professional services such as architectural, engineering, civil, and consultants to assist with the eventual State Interagency Commission on School Construction (IAC), Maryland State Department of Education (MSDE) and other local and jurisdictional project submissions.

Detailed educational specifications describe the instructional program requirements at each school level. Students, teachers, administrators, and community resource personnel, working with the established county curriculum, develop the educational specifications for each facility. This document contains a description of the programs and activities to be offered at the school building. Architectural drawings are then developed consistent with the educational specifications. Reviews are conducted of all architectural drawings and equipment by members of the Board of Education and staff before acceptance and forwarded to the State Interagency Commission on School Construction (IAC). All education specifications shall be in accordance with Calvert County Public Schools Policy Statement #7004 for school renovation, limited renovation, addition, and/or new construction projects. In addition, various sustainability and regulatory elements such as High-Performance building design, current code requirements, and local emergency sheltering requirements are to be considered as part of the educational specification.

Should a project involve the expansion of a secondary school facility, the Department of Instruction will need to coordinate the Career and Technology curriculum with MSDE.

School site selection(s) require approval per the guidelines defined by the IAC. Said site approval must be accomplished prior to any state reviews and subsequent funding approvals. Site considerations must be compatible with any and all state and local ordinances. Also, the site(s) must be within the guidelines of the Calvert County Comprehensive Plan and fall within or be adjacent to a Priority Funded Area. Site procurement shall be in accordance with Calvert County Public Schools Policy Statement #7210. Site size is reflected in the specific educational specification for a project. If a site size is not specified in an educational specification then our general rule of thumb,

although unwritten, is a minimum 16 acres for an elementary school, 25 acres for a middle school and 80 acres for a high school. Rural vs. urban settings require varying flexibilities.

It is important to note that after-hour use of our school facilities by the Calvert County Parks & Recreation Division is an important planning consideration. The athletic fields, gymnasium and some classroom spaces are utilized at our elementary and middle school campuses. The high school campuses are used infrequently due to the extensive after-hour use by the high school programs. The high school auditoriums and media centers are often available for community use. The Calvert County Government has an inventory of additional athletic fields primarily for public and private use but the fields are not used by Calvert County Public Schools. The maintenance of the elementary and middle school athletic fields is shared by the County Government and Calvert County Public Schools. Additionally, our partnership extends to the Calvert County Health Department. Behavioral Health therapists offer counseling services to students at all schools, during the instructional day, for maximized access and ease of use.

The Edward T. Hall Aquatic Center in Prince Frederick provides our school system swim teams a facility for training and meets. Having this facility eliminates the need to provide pools at our high schools.

All project procurements must fall within the procurement guidelines established by the IAC/PSCP, Department of General Services (DGS), Governor's Office of Small, Minority, & Women's Business Affairs, COMAR and CCPS Policy #7008 Minority Business Enterprise (MBE) and #5510 Bidding. This project development process is continuous and incorporates the principles of planning, evaluation, and revision as directed by changing community needs, adjustments in methods of instruction, or redefined educational objectives.

The Comprehensive Maintenance Plan is utilized to determine the building systems needs and physical plant upgrades. With the exception of emergency issues, the projects listed in the Maintenance Plan are coordinated with the Capital Improvement requests annually.

We continue to see an increasing number of students in need of specialized instruction. Language barriers, economic disadvantages and emotional support needs of

students have begun to put a strain on existing space and staffing. Serving these students requires individualized instruction. The need for smaller spaces is causing a shift in our thinking, related to our educational programs and facilities in the very near future. Our programmatic requirements are incorporating a larger number of smaller resource and flex type spaces, to address our students' needs.

There is continued demand in a number of our schools for the Free and Reduced Meal Program (FARMS). As of October 31, 2023, the following schools are over 35% participation: Calvert Country School, Patuxent-Appeal Elementary Campus, St. Leonard Elementary, Mill Creek Middle School and Southern Middle School. The total FARMS participation percentage for the district remained flat from the previous year's figure of 24%, with four schools over 35%, to the current school year rate of 24 percent, with 5 schools, over 35%. Additionally, there are 3 schools that are between 31% and 34% FARMS participation.

Hearing Phase:

Individual school and countywide student enrollment projections, school grade placement projections, overall county population projections, and other similar studies relative to the total Calvert County environment are studied to arrive at the specific group of projects that are to make up the Superintendent's recommended Capital Improvement Program.

The Superintendent's recommended Capital Improvement Program is presented to the Board of Education of Calvert County in a public session. This presentation offers citizens or groups an opportunity to comment on the merits of the plan.

The Superintendent may modify the program predicated on input from the public, after which it is submitted to the Board of Education for final approval. It is then submitted to the County Commissioners for their approval and, finally, to the Maryland Interagency Commission on School Construction.

STAFFING RATIOS

- The staffing ratio for Pre-K is two to twenty.
- The staffing ratio for kindergarten is one (plus a classroom assistant) to twenty-five.
- The staffing ratio for Grades 1 through 2 is one to twenty- two.
- The staffing ratio for Grades 3 through 5 is one to twenty- five.
- The staffing ratio for Grades 6 through 12 is between one to twenty-two and one to twenty-eight.
- The Special Education staffing plan adopted by the Board provides for a hybrid census model.
- These ratios can fluctuate due to enrollment, available staff and funding levels provided by the State and Local Governments.

ORGANIZATIONAL PATTERN

The organizational pattern for the Calvert County Public Schools is structured as follows:

- Elementary Schools: Pre-K through 5
- Middle Schools: Grades 6 through 8
- High Schools: Grades 9 through 12
- Comprehensive Special Education Services are provided to individuals pre-school through age 21.

SCHOOL ATTENDANCE AREAS

The Calvert County Public Schools maintains specific school attendance areas for each elementary and secondary school. Redistricting is a necessary consideration when overcrowding occurs at a particular school. When changes in school attendance areas are considered, the Superintendent and the Board of Education develop proposed changes that are presented to the public for comment and consideration prior to establishing fixed school boundaries. The following considerations are incorporated when this occurs.

- Establish boundaries that follow natural or major man-made landmarks,
- Minimize the number of students and families that may be affected by redistricting,
- Develop boundaries that support safe and reasonable school bus transportation patterns,
- Provide for racial balance at each facility, and
- Provide for anticipated growth at each affected school.

School attendance areas in Calvert County are very reliant on geographic solutions. This county is subdivided by many tributaries of the Chesapeake Bay and the Patuxent River, which do not have direct crossings. Thus, our bus routes must, in most cases, traverse to the MD Route 4 corridor in order to move in a northerly or southerly direction.

Redistricting procedures are outlined under Calvert County Public Schools Policy Statement #4400, Redistricting and School Attendance Areas.

PROPERTY DISPOSAL

The Calvert County Public Schools follows the procedures outlined in Article 4, Section 44(C) of the Annotated Code when disposing of real property.

TRANSPORTATION

Calvert County is rural in nature, but it has town centers with a higher concentration of homes and businesses. Most communities in the county are set back from major transportation arteries with very few sidewalks connecting residences to schools. These factors lead to some routes with low average ridership and many miles driven without students on board to bridge the distance between the neighborhoods and the schools. Therefore, all students are eligible for transportation services. We estimate a student ridership of 70 - 80% when we account for students who drive themselves and for parents who transport their students. In FY 24, at most 162 buses were used on daily routes, as were a select few approved taxis.

Typically, about one hundred and fifteen regular route buses serve our twenty-four public schools each morning and afternoon. Approximately forty-seven special route buses

transport students to regional programs, including Calvert Country School. Special routes may include those for students with special needs who require specialized Transportation, students in programs for English Language Learning, students enrolled in Head Start, students temporarily assigned to programs for alternative education, and for transporting students experiencing homelessness back to their school of origin. Included in those special routes are non-public special education facilities in Annandale, VA, Annapolis, Baltimore City, Ellicott City, Laurel, Millersville, and Owings Mills, as well as the Maryland School for the Blind and Maryland School for the Deaf.

Changes to regular bus routes are occasionally made throughout the school year to maintain safe ridership capacity, ensure timeliness, consistency, and efficiency. Changes to special needs routes happen much more frequently. Reasons can include student entry and withdrawal from regional programs, revisions to transportation as a related service for students with individual education plans (IEPs), and changes in the status of students experiencing homelessness. For safety, buses are equipped with a two-way radio, an audiovisual recording system, and a “live” GPS unit. The GPS system allows designated school system staff to identify the location of each bus at any time. It also allows students and their parents to use a secure app to monitor the proximity of their assigned bus to their assigned bus stops. These technology enhancements are in place for both safety and efficiency. They provide peace of mind for students, parents, and school administrators while also enhancing the school system’s capacity to evaluate the efficiency of our planned routes.

HUMAN RESOURCES POLICY

The personnel policies of a school system are an essential part of the program of public education in a community. The philosophy of the school system and the community is generally reflected in these policies.

Through personnel policies, the Calvert County Public School System established conditions that attract and retain a most highly qualified and diverse staff. The reputation of the school system attracts applicants who are well qualified for professional and support

positions.

Calvert County is projected to experience minimal student growth over the next planning cycle. Fiscal issues are impacting how our schools are staffed. The ever-increasing need for additional student services and support staff for itinerant and special education will require additional space to accommodate those needs. The Human Resources Department will need to recruit specialized individuals to meet the needs of these additional student services. The Human Resources Department utilizes recruiting strategies that attract the most qualified applicants who are representative of all race and ethnic backgrounds.

Calvert County Public Schools has been able to fill most of the teaching vacancies that have occurred in the last several years. Identified critical need areas include special education teachers, speech pathologists, school psychologists, mathematics, world language and science teachers. Positions in these areas have been challenging to staff. However, through strategic recruiting strategies, professional vacancies have been kept to a minimum.

Calvert County Public Schools encourages all employees to continue to grow professionally. Calvert County Public Schools provides all staff with personalized and differentiated professional learning enabling them to grow and increase student success.

GENERAL EDUCATION LEARNING ENVIRONMENTS IN THE 21st CENTURY

Calvert County Public School (CCPS) is dedicated to providing students with educational experiences that foster critical thinking, problem-solving, and communications skills and designed to support all students in becoming college and career ready. The classroom design prioritizes adaptability, inclusivity, and student centeredness to create an inspiring and conducive environment for learning. Classroom space aims to foster collaboration, creativity, and active learning with furniture that can be easily rearranged for different functions.

It is a goal of CCPS to create spaces within our schools that offer “Learning Commons,” which are spaces where students and teachers can come together to collaborate on projects, communicate with their teachers and peers and work

independently, and spend time creatively pursuing individualized learning opportunities and academic assignments.

CCPS schools will strive to model the learning environment that prepares students for future academic pursuits and real-world challenges by providing:

- Ability to configure and reconfigure student seating to accommodate various teaching methods and group sizes
- Open space for collaboration
- Classroom spaces that readily support synchronous learning opportunities with other classrooms and non-contiguous locations
- Designated zones for quiet study, group work, and Mindfulness areas
- The ability to configure and reconfigure shelving in the library and tables/desks in the classroom to repurpose the space for various projects
- Accessibility to technology: Appropriate seating for students to engage in online learning using 1 to 1 devices and access to charging stations
- Robust wireless access for school owned devices and robust bandwidth to support students throughout the school

SPECIAL EDUCATION

Calvert County Public School is dedicated to providing a Free Appropriate Public Education (FAPE) to children and youth with disabilities ages birth to 21. These services include effective classroom instruction, specially designed instruction, supplemental aids and supports, and related services as necessary.

Calvert County Public Schools continues to provide a full continuum of services to students with special needs including: services in general education with collaborative and co-teaching relationships; resource and pull-out programs; as well as regional programs and a public separate day school to address the needs of low-incident populations. Special Education PreK, Special Education Primary, Behavior Development Program (BDP), Structured Learning Environment (SLE), Intensive Structured Learning Environment (ISLE) and Learning for Independence (LFI) are the programs serving these populations.

The focus of our school system to prepare each student to become productive citizens in the 21st century through rigorous and relevant curriculum and instruction requires professional development for general and special educators. A primary goal of CCPS is to

narrow achievement gaps for students with disabilities through specially designed instruction. Universal design for learning, implementation of evidence-based instructional practices and the increased effective use of technology in classrooms will enhance the opportunities for learning for all students. Building positive school cultures and relationships among students, staff, and the community is an essential component of success and achievement.

The maintenance and/or expansion of instructional programs for students with disabilities will continue to have an impact on facility needs in the future. Classroom space must be considered along with space for planning teams, staff development, sharing of content and strategies, and related services. Adequate space is needed for students with functional, physical, sensory, vocational training and/or behavioral needs that allow for flexible grouping, quiet/de-escalation and academic differentiation.

CAREER AND TECHNOLOGY ACADEMY

Calvert County Public Schools offers a broad array of Career and Technical Education (CTE) programs to its students – 24 programs in all. Of these programs, thirteen are offered at our shared time center, the Career and Technology Academy (CTA). Students from all four of our high schools who are interested in pursuing a career in one of these programs attend the CTA for half of their day during 11th and 12th grades. An additional ten programs are taught at the home high schools. This includes a registered youth apprenticeship program started in SY21-22 that teaches students through related technical instruction delivered at either home high schools or CTA and requires 450 hours of on-the-job training in a registered youth apprenticeship environment through local business partners in collaboration with the department of labor.

The programs offered at the CTA are focused on preparing students for the world of work and post-secondary education. As an integral part of our secondary curriculum, students from all of our high schools can opt to attend the center. This year, nearly 600 students have participated in CTE courses delivered at CTA. And, over 450 students have requested courses for the 2023-2024 school year. Current space, however, will allow

approximately 375 of these students to enroll in programs at CTA as first year (junior) students. The “full capacity” of courses/programs at CTA is 750 students. The current senior class is slightly underenrolled from expected levels due to their initial recruitment/enrollment occurring during the final year of virtual instruction during the COVID-19 pandemic. However, there is also regular and expected attrition of students from the first year of programs into the second. Partly, this is “intentional” in the exploratory nature of CTE programs: we encourage students to find out if a career field is a good fit. If they determine after one year that the program no longer matches their career goals, the student can opt to return to his/her comprehensive school full time.

Working closely with the business community through our local advisory and program advisory committees, all the technical and craft areas are continually reviewed and updated. This continual communication and the requirement of the Maryland Department of Education to stay current form the basis for the creation of new courses and the modification of others. Our fastest growing and most consistently oversubscribed programs align to areas most in need in our local workforce including Academy of Health Professions and several areas in the Construction Trades, such as Electricity, Welding, and HVAC/Plumbing. An additional area of program growth is the Fire & Rescue/EMT Cadet program, which is possible thanks to a partnership with our local fire departments and Calvert County Public Safety. Enrollment for this program has reached capacity for both the 2023-24 and for the upcoming 2024-25 school years.

During the 2023-24 school year, a program in the field of Agriculture and Environmental Science, Curriculum for Agricultural Science Education (CASE), that was previously located at Calvert High School was relocated to CTA. The first cohort of students began this year and will complete the program in the 2024-25 school year. This change has allowed greater access to students from the Northern, Huntingtown, and Patuxent high school attendance zones. This program includes four courses; a science lab space which is outfitted with computer technology to allow the students to conduct research on the internet will house the program at CTA.

Students also have the opportunity to participate in internships and a cooperative work experience in their chosen field of study. Local businesses make these positions

available and provide feedback to the supervising teachers regarding each student's performance and their preparation at the Career and Technology Academy. The success of this effort is reflected in a placement rate of 89.8% of our graduating seniors in their chosen career and/or college.

Besides the programs which we offer at the Career and Technology Academy, we have several CTE programs which are housed at the regular high schools.

- Within the Business Management and Finance (BMF) cluster, we have three programs of study. We currently have over 200 students enrolled in these programs. These courses are taught in computer labs and regular classrooms.
- In the Human Resource Services (HRS) cluster we have two programs. We have over 400 students in Criminal Justice. Courses in this program are taught in the regular classroom with frequent visits by law enforcement officers. In addition, students have the opportunity to participate in "ride-along" experiences with local law enforcement officers. The program has a Dual Enrollment credit option for students in the Criminal Justice courses with the College of Southern Maryland. In addition to Criminal Justice, the Teacher Academy of Maryland (TAM) program offers a four-course sequence articulated with 11 different colleges and universities in Maryland where students can earn college credits toward the completion of a teaching degree. Students in the TAM program complete an internship at an elementary or middle school during the capstone course in the program.
- We offer two Project Lead the Way (PLTW) programs at all four of our high schools: PLTW Biomedical Science and PLTW Pre-Engineering. Enrollment in both programs has consistently increased over the previous four years. This year, over 100 students are expected to complete the Biomedical program and approximately 75 students are expected to complete the Engineering pathway. Computer labs, biology labs and general classroom spaces are used to deliver this specialized instruction.

- In the Information Technology (IT) career cluster, there has been tremendous growth in the Computer Science pathway. The first 22 students to complete the program graduated in 2020. The program has continued to grow and this year, there are over 50 students eligible to complete the pathway. In addition, Huntingtown and Patuxent High schools have both been recognized by the college board for their efforts to increase the number of females in computer science courses. These courses are implemented in computer labs.
- In the 2020-21 School Year, MSDE approved the existing Naval Sciences JROTC program as a CTE pathway. The program existed for many years in all four high schools; however, students now receive credit for CTE completion by taking NJROTC Levels I, II, and III. These courses are taught in specialized classrooms for the program. Currently, over 325 students are enrolled in NJROTC courses in the four high schools with approximately 95 students expected to complete the pathway through the third course level this year.

SCHOOL SITE ANALYSIS – CALVERT SOUTHERN REGION

DOWELL ELEMENTARY, PATUXENT-APPEAL ELEMENTARY CAMPUS, ST. LEONARD ELEMENTARY, MUTUAL ELEMENTARY, SOUTHERN MIDDLE, MILL CREEK MIDDLE, AND PATUXENT HIGH SCHOOLS

This group of schools collectively serves the southern region of Calvert, or what might be considered, but is not limited to, the first election district of the county.

The Patuxent-Appeal Elementary Campus is situated within the Lusby Town Center and St. Leonard Elementary is located adjacent to the St. Leonard Town Center. The change to extend the town center to St. Leonard Elementary has been proposed in the updated St. Leonard Town Center Master Plan but the updated zoning map has not yet been adopted. Dowell Elementary, Mill Creek Middle and Patuxent High School are situated between the Lusby and Solomons Town Centers. The separation between these two town centers is approximately one mile. Southern Middle School is three miles to the north of the Lusby Town Center while Mutual Elementary School is approximately three miles to the west of the St. Leonard Town Center.

This region is very well master planned for the future in terms of tourism, residential growth areas, business development and its proximity to the Patuxent Naval Air Station, St. Mary's Technology corridor, the Patuxent Business Park, the Calvert Cliffs Nuclear Power facility and the Dominion Liquid Natural Gas Facility.

The County Adequate Public Facility Report for Spring of 2024 reveals that none of the school geographical attendance areas of this region are closed for the recording of new residential subdivision development and all schools are well below the ordinance threshold. Of the three regions discussed in this report, the southern region is least likely to see a major increase in population growth over the next five years. Up until recently, there have been no new major housing subdivisions proposed. The Chesapeake Ranch Estates, situated to the south and east of the Lusby Town Center, is the only major subdivision with an inventory of developable lots on record. With the potential for a new multi-family subdivision in the Lusby Town Center, currently in the preliminary phase, enrollment trends in this region of the county may increase in a few years.

The schools referenced above are well positioned both geographically and in enrollment capacity for any growth that will occur over the next five planning cycles. This statement excludes consideration related to full day Pre-Kindergarten, as required by the Blueprint for Maryland's Future. There are no plans for major expansions and or renovations/revitalizations for these schools. Only systemic projects are in the future Capital Improvements Program requests. The schools in this region are in the adequate to good facility maintenance category. We have changed the Administrative/ Management approach for the Patuxent-Appeal Elementary School Campus (PAC) by utilizing one Principal to oversee both schools. Both schools are presently considered as a single facility with MSDE but remain as separate facilities for PSCP purposes. Prior to the start of the 2017-2018 school year, a realignment of grade levels across the 2 buildings was conducted. Beforehand, the Patuxent Elementary Building housed grades Pre-K-2 and Appeal Elementary was the location for grades 3 - 5. The separation that the 2 buildings created between grades 2 and 3, led to a lack of continuity, consistency, and community. The realignment shifted Pre-K, K, and the Judy Center to the Appeal building and consolidated grades 1 through 5 within the Patuxent building.

Enrollment within the southern part of Calvert County largely continues to experience a lower student enrollment than the northern region of the county. Planning suggests revisiting the possibility of adjusting school attendance areas, to take advantage of available seats at the elementary and middle school levels. However, this will require further exploration of potential students generated through the multi-family subdivision, preliminarily planned in the Lusby region.

SCHOOL SITE ANALYSIS - CALVERT CENTRAL REGION

BARSTOW ELEMENTARY, CALVERT ELEMENTARY, HUNTINGTOWN ELEMENTARY, PLUM POINT ELEMENTARY, CALVERT MIDDLE, PLUM POINT MIDDLE, CALVERT HIGH SCHOOL, AND HUNTINGTOWN HIGH SCHOOLS

This group of schools collectively serves the central region of Calvert, or what might also be considered, but is not limited to, the second election district of the county. Barstow Elementary, Calvert Elementary, Calvert Middle and Calvert High schools are

located within or within one-third of a mile of the Prince Frederick Town Center.

Huntingtown Elementary School is one-third mile from the Huntingtown Town Center, and Huntingtown High School borders the Huntingtown Town Center. The Plum Point Elementary and Middle School campus is situated between the Prince Frederick and Huntingtown Town Centers and the Town of Chesapeake Beach.

This region is more spread out than the southern region, both geographically and in relative distance between town centers. This region is home to the County Governmental Center and Courthouse. The road network leads west on the Route 231 corridor to the Calvert County Industrial Park and Charles County and the Route 2/4 corridor to the employment centers of Washington, D.C. to the north and the Patuxent Naval Air Station to the south. The commercial and retail base in this region has shown slight growth over the previous four years. Phase II improvements of MD 2/4 in the Prince Frederick Town Center have been completed. The county has requested state funding for the design, engineering, and construction for Phase III improvements, which would widen MD 2/4 from four to six lanes from Fox Run north to Stoakley Road.

Due to the COVID-19 pandemic, Calvert County's schools saw an overall decline in enrollment in the 2020/21 school year. The 2022/2023 school year saw an enrollment increase from the previous year, however the current 2023/2024 school year has lower overall enrollment than the prior school year. Overall enrollment numbers remain lower than pre-pandemic times. As a result, similar to 2023, the County Adequate Public Facility Report for the Spring of 2024, indicates that none of the school geographical attendance areas of this region, are over capacity. With the continuation of new housing stock, enrollment is expected to increase within this region, specifically at elementary schools serving neighborhoods located in Prince Frederick Town Center and Town Center adjacent areas. There is one large 249-unit apartment complex that is now complete and occupied within the Prince Frederick Town Center. There are two other major high-density subdivisions currently under development in the Prince Frederick Town Center, yielding a mix of single-family homes, townhouses and apartments.

The schools within the Prince Frederick Town Center are fairly well positioned for the future projected growth of this region for the next five years. All of the schools in this

region are in adequate standing in the facility maintenance category. The FY2025 Capital Improvements Program does include a feasibility study and initial design in future funding cycles for potential renovation or replacement of 2 facilities: Calvert Elementary School and Calvert Country School.

Huntingtown High School and Huntingtown Elementary School are not over enrolled at this time. Over the last few years a project to address onsite bus and traffic issues at Huntingtown Elementary School was completed. Additionally, some HVAC equipment was also replaced via a partial systemic project.

The Plum Point Elementary and Middle school campuses, by virtue of their location between the Prince Frederick Town Center, the Huntingtown Town Center and Chesapeake Beach, are impacted by numerous development projects. The most compelling concern is the continued growth within the Town of Chesapeake Beach. Chesapeake Beach is an incorporated municipality within Calvert County and is not subject to the County adequate public facility regulations. Continued residential development in the Town of Chesapeake Beach will not only impact Beach Elementary School situated in the town, but Plum Point Elementary, Plum Point Middle, and Huntingtown High School within the central region depending on present and future school geographical attendance areas.

As stated earlier, none of the school geographic attendance areas within this region are closed for the recording of residential subdivision development, however, the County Adequate Public Facility Report from Spring 2020 indicated that Plum Point Elementary was over capacity, at the time. Nine years ago, the Board of Education adjusted the geographical attendance area of Plum Point Elementary School to receive a portion of the Beach Elementary School attendance area to alleviate the over enrollment issue. Planning suggests a need to visit the possibility of adjusting the school attendance areas, in particular, at the elementary and high school levels, to alleviate the student population issues evident in the northern region of the county.

Based on the revised State maintenance inspection rubric, all the schools are in adequate condition. Aside from systemic type projects, as noted previously, a feasibility study in the future will examine potential renovation or replacement of 2 facilities within

this region. Lastly, however, as a result of the Blueprint legislation, full day Pre-K may have construction impacts to the elementary schools, that will need to be considered.

SCHOOL SITE ANALYSIS – CALVERT NORTHERN REGION

BEACH ELEMENTARY, MT. HARMONY ELEMENTARY, SUNDERLAND ELEMENTARY, WINDY HILL ELEMENTARY, NORTHERN MIDDLE, WINDY HILL MIDDLE, AND NORTHERN HIGH SCHOOLS

This group of schools collectively serves the north region of Calvert, or what also might be considered, but is not limited to, the third election district of the county. Only Beach Elementary School is situated within a Priority Funding Area which is the Town of Chesapeake Beach. The Northern Middle and High School campuses serve the Town Centers of Dunkirk, Owings and the Towns of Chesapeake Beach and North Beach. The Dunkirk and Owings Town Centers and the Towns of Chesapeake Beach and North Beach are the four main development zones in the area. Although the Towns of Chesapeake Beach and North Beach are adjacent to one another, the relative lack of proximity to the Dunkirk and Owings Town Centers allows for various areas of development throughout this region. This accounts for the placement of the remaining schools outside of the town centers.

As stated above, this area is considerably more spread out in comparison to the southern and central regions. It is also the more desirable region for growth due to its proximity to the Annapolis, Baltimore and Washington employment centers. With the exception of Chesapeake Beach, growth in this area has been somewhat kept in check by the lack of public utilities. Commercial/retail development has been slowly added to the Dunkirk Town Center which adds to the attractiveness of the area.

The County Adequate Public Facility Report for Spring 2024 has revealed that Mt. Harmony Elementary School is currently the only school in the region that is above capacity, at 107.5%. As a result, the geographical region is closed for final recordation of new residential developments. Northern Middle School and Northern High School, at 99.6% and 99.9%, are both approaching the ordinance threshold. With completion of the Northern High School project in August 2020, and the future Northern Middle School

project, currently in planning, for replacement, starting in FY2025, strains to capacity are being addressed through future projects. However, due to the attractiveness of the Northern Calvert region to development, adjustments to school boundaries may need to be examined.

The other remaining middle school in the north, Windy Hill Middle at 87.0%, is slightly below the ordinance threshold. At the elementary level, Sunderland Elementary at 81.7% and Windy Hill Elementary at 84.0%, are also below the ordinance threshold. Beach Elementary at 90.0% is approaching the ordinance threshold. The new Beach Elementary School was opened and occupied by staff and students during the current 2023/2024 school year and was sized with increased capacity however the lack of a Public Facilities Ordinance within the incorporated Town of Chesapeake Beach poses continued challenges, in terms of planning. Beyond the present Capital Improvement Program forecast, improvements to Mt. Harmony Elementary will be evaluated. A future needs assessment will indicate the scope of this request.

The remaining schools in this region have been rated as adequate to good condition within the facility maintenance category, with only systemic needs outlined in the CIP. All of the elementary schools in this area will require re-evaluation due to the Blueprint implementation of full day Pre-K to the public-school arena.

Nine years ago, the Board of Education adjusted the geographical attendance areas of Beach Elementary School and Windy Hill Elementary School to alleviate the Beach Elementary School enrollment issue. With the completion and occupancy of the new Beach Elementary School, although the capacity issue for this building is temporarily addressed, it will likely return to becoming over capacity. The Town of Chesapeake Beach is not subject to the county's adequate public facilities regulations and has not adopted its own, thus increased residential development within the town may impact the school's capacity. Continued residential development in the Town of Chesapeake Beach will impact not only Beach Elementary School but Sunderland Elementary School, Windy Hill Elementary School, Northern Middle School, Windy Hill Middle School and Northern High School within the northern region depending on the present and future school

geographical attendance areas. The northern part of Calvert County is experiencing a higher student enrollment than the southern part of the county. Planning suggests considering the possibility of adjusting school attendance areas, to provide relief for this part of the county by taking advantage of available capacity in the southern schools.

CALVERT REGIONAL FACILITIES

CAREER AND TECHNOLOGY ACADEMY, CALVERT COUNTRY SCHOOL AND HUNTING CREEK ANNEX AT CALVERT COUNTRY SCHOOL

This group of schools serves in different capacities to provide more focused instruction which can be better delivered in regional facilities. One is located in a town center and the other two facilities are town center adjacent.

The Career and Technology Academy situated in the Prince Frederick Town Center provides a venue for the delivery of Career Technology Education for all four of our high schools. The facility houses introductory through advanced levels of instruction in the technical trades, automotive trades, construction trades, computer trades, media, cosmetic, engineering, health and culinary disciplines. The Career and Technology Academy has a minor impact on the county Adequate Public Facility Report. It is in good condition.

The Calvert Country School is situated just outside of the Prince Frederick Town Center area. It provides comprehensive services for our severely and profoundly disabled school age residents, those with emotional issues, as well as students requiring additional skills to function more independently in the community, from PreK to 21 years of age. Some of our less disabled students are provided services within their home schools. The Country School does not affect the county Adequate Public Facility Report. The facility is in adequate condition, based on the State's revised maintenance inspection requirements.

The Hunting Creek Annex (HCA) was located within a facility situated in the Huntingtown Town Center. This facility built in 1944, had an addition completed in 1960. Costs of maintenance and underutilization over the last few years, provided an opportunity for Calvert County Public Schools to re-evaluate keeping this facility. In May 2017, the Calvert County Board of Education approved the relocation of programs housed

within HCA to a wing located within the Calvert Country School building. The designated area within Calvert Country School was remodeled in early 2018 and the programs housed within the Hunting Creek Annex were relocated in May 2018. The renovated wing houses various special education staff who engage in comprehensive assessment testing of young children and provide parent consultations. HCA was reverted back to Calvert County Government in 2019. The following programs are now located in the Calvert Country School building:

- ∞ Child Find: provides screening, assessment and development of IEPs for children ages 3 – 5 which are conducted at Calvert Country School in the Child Find office. Students who qualify for services receive them at their home school, childcare or regional program as identified on the IEP.
- ∞ Infants and Toddlers Program (ITP): serves children from birth to four with developmental delays and/or disabilities. Children may be evaluated at Calvert Country School through the ITP program, but they usually receive services at home or at a childcare facility. Some service is provided at Calvert Country School to include a structured intervention program for two-year-olds and parent training and various IFSP meetings are held on site. Occasionally, special events for children are offered in the building.
- ∞ Parent Connections: provides support and education for parents of special needs children. Several times a year this program offers a play group in the building for parents and children as well as trainings. The Parent Connections office houses a lending library for families to access which is located at Calvert Country School.

BIRTH RATES

The 2021 data from the Maryland Department of Health Vital Statistics Administration was released post issuance of last year's report and shows a continuation of prior year trends. Death rates increased at a greater rate than birth rates in 2021, therefore the ratio of births to deaths is slightly lower than 2020. As of the current date, the 2022 data has not been published. (See *Table II*)

TABLE II

*Number of Resident Births and Deaths
Calvert County, Maryland
2012 – 2022*

YEAR	NUMBER OF LIVE BIRTHS*	NUMBER OF DEATHS	RATIO: BIRTHS TO DEATHS
2012	913 – 4.4%	616 – 1.7%	1.48
2013	912 – 0.0%	642 – 4.0%	1.42
2014	904 – 0.8%	637 – 0.7%	1.42
2015	925 + 2.3%	656 + 2.9%	1.41
2016	907 – 1.9%	720 + 9.8%	1.26
2017	900 – 0.8%	723 + 0.4%	1.24
2018	883 – 1.9%	676 – 6.5%	1.30
2019	896 + 1.5%	780 +15.4%	1.15
2020	943 + 5.2%	820 +5.1%	1.15
2021	967 + 2.5%	859 +4.8%	1.13
2022	Not Available	Not Available	Not Available

* Source: Maryland Department of Health Vital Statistics Administration

NOTE: Plus or minus (+/-) denotes change from previous year.

INSTRUCTIONAL PLAN SUPPORT DATA

The inventory of resources and services available within the community to support the instructional plan is referred to as support data. It includes the health, transportation, cultural services, and other auxiliary services which could augment the school program.

Contained within the Appendix are maps which indicate the basic support data. Appendix A illustrates the general locale of Calvert County. Appendix B indicates the election districts in the county. Appendix C depicts current public facilities in the county

which augment and support the public school system. Appendix D and Appendix E illustrate the Calvert County Water and Sewerage Plans. Appendix F-1 shows Calvert County's designated Priority Funded Areas and Priority Preservation Areas as of 2018, and F-2 is the Future Land Use Map, which shows the county's existing road network (Calvert County Comprehensive Plan, adopted 2019). Appendix G illustrates our elementary school boundaries, Appendix H illustrates our middle school boundaries and Appendix I illustrates our high school boundaries. Appendix J illustrates the Calvert County Public Schools existing feeder plan.

PUBLIC AND PRIVATE SCHOOL ENROLLMENT

Public and private school enrollments are reported in the following *Table III*. The combined enrollment for the non-public schools for 2023-24 represents 5% of the total school enrollment in Calvert County. The public-school enrollment has decreased from 96% where it stood for the previous three years, to 95%. The Calvert County Public Schools Pre-Kindergarten program is limited to those students falling into various socioeconomic indicators. Thus, only a portion of all three and four-year old children in the county attend a public-school Pre-Kindergarten or special Pre-Kindergarten program. During the 2023-24 school year, there were ten (10) non-public, church, nursery or early childhood establishments which reported 154 pre-kindergarten four-year-olds. These same establishments reported a total of 93 enrolled three-year-olds, however it is unknown whether these are half day programs or full day. Additionally, it is not possible to determine which of these children would be eligible to attend a Calvert County Public Schools program and whether the private school program being offered is in fact a pre-kindergarten curriculum. That said, we do not provide a Pre-Kindergarten comparison in *Table III*.

It is worth noting that as Calvert County transitions to implement the full day Pre-Kindergarten requirement outlined within the Blueprint for Maryland's Future, there may be eligible private providers that opt to offer full day pre-kindergarten to eligible three and four year old students. Due to the very specific requirements in the Blueprint, a more apt

comparison may be possible between the publicly and privately offered pre-K program, in the future.

TABLE III
Public and Private School Enrollment for Calvert County 2019 - 2023

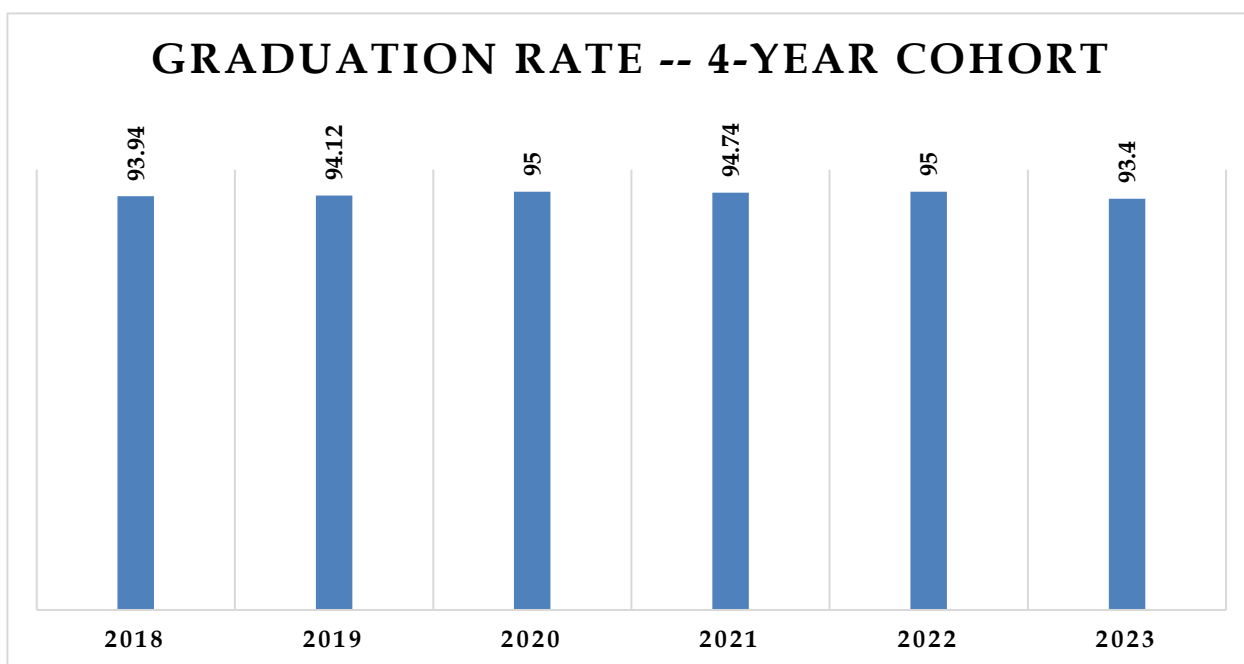
Years	Grades	Calverton School (Private)	Our Lady Star of the Sea (Parochial)	Cardinal Hickey Academy (Parochial)	Tidewater School (Private)	The Wesley School (Parochial)	Total Private & Parochial	Calvert County Public Schools	% Public Schools Enrollment Total
2019	Pre-K	0	0	0	0	0	0	435*	0
2020	K	15	10	18	11	6	60	1077	95%
	1-5	57	54	62	14	0	187	5633	97%
	6-8	53	29	47	0	0	129	3746	97%
	9-12	<u>115</u>	<u>0</u>	<u>0</u>	<u>0</u>	<u>0</u>	<u>115</u>	<u>5141</u>	<u>98%</u>
TOTAL		240	93	127	25	6	491	15,597	97%
2020	Pre-K	0	0	0	0	0	0	340*	0
2021	K	15	19	15	9	10	68	943	93%
	1-5	63	76	77	24	14	254	5255	95%
	6-8	57	30	40	0	0	127	3639	97%
	9-12	<u>109</u>	<u>0</u>	<u>0</u>	<u>0</u>	<u>0</u>	<u>109</u>	<u>5115</u>	<u>98%</u>
TOTAL		244	125	132	33	24	558	14,952	96%
2021	Pre-K	0	0	0	0	0	0	382*	0
2022	K	26	30	16	12	10	94	983	91%
	1-5	90	95	90	27	20	322	5415	94%
	6-8	65	41	49	3	0	158	3558	96%
	9-12	<u>97</u>	<u>0</u>	<u>0</u>	<u>0</u>	<u>0</u>	<u>97</u>	<u>5077</u>	<u>98%</u>
TOTAL		278	166	155	42	30	671	15,033	96%
2022	Pre-K	0	0	0	0	0	0	368*	0
2023	K	27	20	14	5	8	74	1043	93%
	1-5	99	101	95	32	14	341	5410	94%
	6-8	66	41	51	2	0	160	3545	96%
	9-12	<u>83</u>	<u>0</u>	<u>0</u>	<u>0</u>	<u>0</u>	<u>83</u>	<u>5049</u>	<u>98%</u>
TOTAL		275	162	160	39	22	658	15,047	96%
2023	Pre-K	0	0	0	0	0	0	287*	0
2024	K	30	20	15	11	12	88	976	92%
	1-5	96	103	108	24	34	365	5391	94%
	6-8	54	43	53	3	0	153	3537	96%
	9-12	<u>100</u>	<u>0</u>	<u>0</u>	<u>0</u>	<u>0</u>	<u>100</u>	<u>4995</u>	<u>98%</u>
TOTAL		280	166	176	38	46	706	14,899	95%

*Not part of total

GRADUATION RATE OF CALVERT COUNTY HIGH SCHOOLS

Calvert County Public Schools consistently maintains a high graduation rate with the rate for 2023 being 93.4%. Calvert's mission—to produce graduates who are responsible citizens with career and educational choices in the 21st century—prioritizes giving students the high-quality instruction and support they need to graduate and move on to careers or post-secondary education. *(Note: graduation rates and other metrics at or above 95% are suppressed to maintain student privacy.)*

TABLE IV



ENROLLMENT PROJECTIONS

The impacts felt to enrollment during the COVID-19 pandemic continue to affect Calvert County Public Schools. Enrollment during the 2023/2024 school year continues to be well below pre-pandemic levels, when total FTE enrollment was 15,597 students.

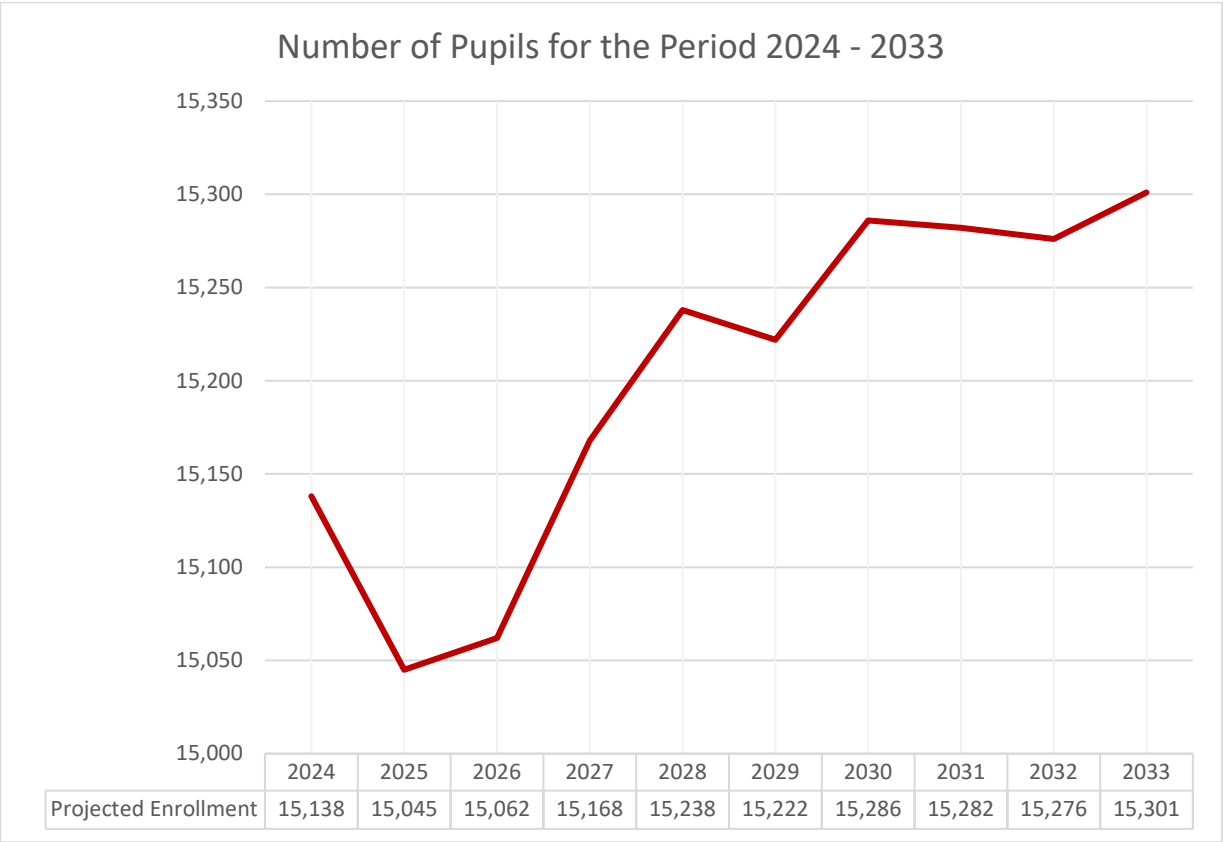
Many families continue to home school their students, rather than enrolling them into the public school system. Applications for students on parental instruction saw an increase in September 2023, with a total of 1,169 applications compared to 984 the previous year. This marks an overall increase of 19 percent with the greatest percentage of applications originating at the elementary level. The number of applications during the current school year are higher than the amount received in September 2020, during the height of the COVID-19 pandemic. At that time, a total of 1,133 applications were received. The current year applications are still lower than September 2021, when a total of 1,308 applications were received.

Prior to COVID-19, enrollments typically saw an upward trend from September through the rest of the school year, with additional students being registered and enrolled throughout the year. While there have always been students who have been withdrawn from school after September, the overall mid-year enrollments have typically exceeded withdrawals, thereby yielding a net gain to the enrollments with the progression of the school year. However, in the 2019/20 school year, that trend skewed in the opposite direction and continued in the 2020/21 school year, during the height of COVID, with net withdrawals exceeding net enrollments. While that trend slightly reversed again in 2021/22, the last two school years (2022/23 and 2023/24) have seen net negative enrollment trends with more students being withdrawn than being enrolled, with the progression of the school year. The greatest net decrease is seen at the High School level, followed by Middle School.

Based on the increase in birth rates coupled with the trends noted above, as well as development information, our enrollment projections for the 2024 – 2033 school years show a very modest increase to the 2033-2034 school year. Pages 49 through 73 present the actual and estimated enrollments of the years 2023 through 2033.

TABLE V, located below, presents graphically the estimated enrollment of Calvert County Public Schools in the years noted.

TABLE V
Number of Pupils for the Period 2024-2033



FTE ENROLLMENT PROJECTIONS BY GRADE

LEA CALVERT DATE 29-APRIL-24

School BARSTOW ELEMENTARY SCHOOL

Enrollments as of September 30TH									
	2023 Actual	2024 Year 1	2025 Year 2	2026 Year 3	2027 Year 4	2028 Year 5	2029 Year 6	2030 Year 7	2033 Year 10
PRE-K									
KINDERGARTEN	94	92	103	106	113	107	105	104	102
1st	99	99	95	106	109	115	110	108	105
2nd	95	104	100	96	107	110	117	111	108
3rd	102	99	105	101	98	109	112	119	110
4th	131	108	101	107	103	100	111	114	113
5th	109	137	109	103	109	105	101	113	117
6th									
7th									
8th									
9th									
10th									
11th									
12th									
SP ED									
TOTAL	630	639	613	619	639	646	656	669	655

IAC/PSCP FORM 101.2
R3/11

FTE ENROLLMENT PROJECTIONS BY GRADE

LEA CALVERT DATE 29-APRIL-24

School BEACH ELEMENTARY SCHOOL

Enrollments as of September 30TH									
	2023 Actual	2024 Year 1	2025 Year 2	2026 Year 3	2027 Year 4	2028 Year 5	2029 Year 6	2030 Year 7	2033 Year 10
PRE_K									
KINDERGARTEN	77	83	92	95	101	95	94	93	92
1st	97	81	84	95	97	103	98	96	93
2nd	90	101	82	86	96	98	105	99	97
3rd	66	93	102	84	88	98	100	107	98
4th	82	72	95	104	85	89	99	102	101
5th	92	86	73	96	106	86	91	101	105
6th									
7th									
8th									
9th									
10th									
11th									
12th									
SP ED									
TOTAL	504	516	528	560	573	569	587	598	586

IAC/PSCP FORM 101.2
R3/11

FTE ENROLLMENT PROJECTIONS BY GRADE

LEA

CALVERT

DATE

29-APRIL-24

School

CALVERT ELEMENTARY SCHOOL

Enrollments as of September 30TH									
	2023 Actual	2024 Year 1	2025 Year 2	2026 Year 3	2027 Year 4	2028 Year 5	2029 Year 6	2030 Year 7	2033 Year 10
PRE_K									
KINDERGARTEN	69	75	84	86	91	87	85	84	83
1st	72	73	77	86	88	93	89	87	84
2nd	71	77	74	78	87	89	95	90	87
3rd	91	76	78	76	80	89	91	96	89
4th	85	97	77	80	77	81	90	93	92
5th	74	89	98	79	81	77	83	92	96
6th									
7th									
8th									
9th									
10th									
11th									
12th									
SP ED									
TOTAL	462	487	488	485	504	516	533	542	531

77IAC/PSCP FORM 101.2

82R3/11

FTE ENROLLMENT PROJECTIONS BY GRADE

LEA CALVERT DATE 29-APRIL-24

School DOWELL ELEMENTARY SCHOOL

Enrollments as of September 30TH									
	2023 Actual	2024 Year 1	2025 Year 2	2026 Year 3	2027 Year 4	2028 Year 5	2029 Year 6	2030 Year 7	2033 Year 10
PRE_K									
KINDERGARTEN	79	79	88	91	96	92	90	89	88
1st	94	83	82	91	94	99	94	92	90
2nd	100	99	84	82	92	94	101	95	93
3rd	91	106	101	85	84	94	96	102	94
4th	104	96	108	103	87	86	95	98	98
5th	101	110	97	109	104	88	87	97	101
6th									
7th									
8th									
9th									
10th									
11th									
12th									
SP ED									
TOTAL	569	573	560	561	557	553	563	573	564

IAC/PSCP FORM 101.2
R3/11

FTE ENROLLMENT PROJECTIONS BY GRADE

LEA CALVERT DATE 29-APRIL-24

School HUNTINGTOWN ELEMENTARY SCHOOL

Enrollments as of September 30TH									
	2023 Actual	2024 Year 1	2025 Year 2	2026 Year 3	2027 Year 4	2028 Year 5	2029 Year 6	2030 Year 7	2033 Year 10
PRE_K									
KINDERGARTEN	83	66	75	77	82	77	75	75	73
1st	74	90	68	77	78	84	79	78	75
2nd	71	82	91	70	77	80	84	80	78
3rd	71	76	84	93	71	79	81	86	80
4th	79	76	78	84	94	72	80	82	82
5th	79	86	78	78	86	95	73	82	85
6th									
7th									
8th									
9th									
10th									
11th									
12th									
SP ED									
TOTAL	457	476	474	479	488	487	472	483	473

IAC/PSCP FORM 101.2
R3/11

FTE ENROLLMENT PROJECTIONS BY GRADE

LEA CALVERT DATE 29-APRIL-24

School MT. HARMONY ELEMENTARY SCHOOL

Enrollments as of September 30TH									
	2023 Actual	2024 Year 1	2025 Year 2	2026 Year 3	2027 Year 4	2028 Year 5	2029 Year 6	2030 Year 7	2033 Year 10
PRE_K									
KINDERGARTEN	100	73	81	84	89	84	83	82	81
1st	103	109	74	83	85	91	86	84	82
2nd	108	109	110	75	84	86	92	87	85
3rd	100	114	110	112	77	86	88	94	86
4th	102	107	116	112	114	78	87	90	89
5th	114	111	109	118	114	115	80	89	92
6th									
7th									
8th									
9th									
10th									
11th									
12th									
SP ED									
TOTAL	627	623	600	584	563	540	516	526	515

IAC/PSCP FORM 101.2
R3/11

FTE ENROLLMENT PROJECTIONS BY GRADE

LEA CALVERT DATE 29-APRIL-24

School MUTUAL ELEMENTARY SCHOOL

Enrollments as of September 30TH									
	2023 Actual	2024 Year 1	2025 Year 2	2026 Year 3	2027 Year 4	2028 Year 5	2029 Year 6	2030 Year 7	2033 Year 10
PRE_K									
KINDERGARTEN	43	50	56	57	60	58	56	56	55
1st	59	46	52	58	59	62	59	59	56
2nd	55	61	46	52	58	59	63	60	59
3rd	65	58	62	47	53	59	61	65	59
4th	62	71	59	64	47	55	61	62	62
5th	73	68	71	60	64	49	55	62	64
6th									
7th									
8th									
9th									
10th									
11th									
12th									
SP ED									
TOTAL	357	354	346	338	341	342	355	364	355

IAC/PSCP FORM 101.2
R3/11

FTE ENROLLMENT PROJECTIONS BY GRADE

LEA CALVERT DATE 29-APRIL-24

School PATUXENT APPEAL ELEMENTARY SCHOOL

Enrollments as of September 30TH									
	2023 Actual	2024 Year 1	2025 Year 2	2026 Year 3	2027 Year 4	2028 Year 5	2029 Year 6	2030 Year 7	2033 Year 10
PRE_K									
KINDERGARTEN	88	104	116	119	127	120	117	117	114
1st	96	91	106	119	122	129	122	121	117
2nd	96	99	92	108	119	124	131	124	121
3rd	108	100	101	94	109	122	126	134	124
4th	107	113	102	103	96	112	124	129	127
5th	118	111	114	103	105	97	114	127	132
6th									
7th									
8th									
9th									
10th									
11th									
12th									
SP ED									
TOTAL	613	618	631	646	678	704	734	752	735

IAC/PSCP FORM 101.2
R3/11

FTE ENROLLMENT PROJECTIONS BY GRADE

LEA CALVERT DATE 29-APRIL-24

School PLUM POINT ELEMENTARY SCHOOL

Enrollments as of September 30TH									
	2023 Actual	2024 Year 1	2025 Year 2	2026 Year 3	2027 Year 4	2028 Year 5	2029 Year 6	2030 Year 7	2033 Year 10
PRE_K									
KINDERGARTEN	79	86	96	98	104	99	97	96	95
1st	85	82	87	98	101	107	101	100	96
2nd	82	91	83	88	99	102	108	103	100
3rd	118	89	93	85	91	101	103	110	102
4th	90	126	90	94	86	92	103	106	104
5th	89	97	128	91	95	88	94	104	109
6th									
7th									
8th									
9th									
10th									
11th									
12th									
SP ED									
TOTAL	543	571	577	554	576	589	606	619	606

IAC/PSCP FORM 101.2
R3/11

FTE ENROLLMENT PROJECTIONS BY GRADE

LEA CALVERT DATE 29-APRIL-24

School ST. LEONARD ELEMENTARY SCHOOL

Enrollments as of September 30TH									
	2023 Actual	2024 Year 1	2025 Year 2	2026 Year 3	2027 Year 4	2028 Year 5	2029 Year 6	2030 Year 7	2033 Year 10
PRE_K									
KINDERGARTEN	78	64	71	73	78	73	72	72	70
1st	68	82	65	73	75	80	76	74	72
2nd	65	72	83	66	74	76	81	76	75
3rd	53	68	73	84	68	75	77	82	76
4th	59	56	69	74	86	69	77	79	79
5th	82	63	57	91	75	88	70	78	81
6th									
7th									
8th									
9th									
10th									
11th									
12th									
SP ED									
TOTAL	405	405	418	440	456	461	453	461	453

IAC/PSCP FORM 101.2
R3/11

FTE ENROLLMENT PROJECTIONS BY GRADE

LEA CALVERT DATE 29-APRIL-24

School SUNDERLAND ELEMENTARY SCHOOL

Enrollments as of September 30TH									
	2023 Actual	2024 Year 1	2025 Year 2	2026 Year 3	2027 Year 4	2028 Year 5	2029 Year 6	2030 Year 7	2033 Year 10
PRE_K									
KINDERGARTEN	84	95	105	109	114	109	108	107	105
1st	99	91	98	110	112	119	113	112	108
2nd	101	106	92	100	110	114	121	115	112
3rd	100	107	107	92	102	112	117	124	114
4th	110	107	109	108	94	104	116	118	118
5th	111	115	107	110	110	96	104	117	122
6th									
7th									
8th									
9th									
10th									
11th									
12th									
SP ED									
TOTAL	605	621	618	629	642	654	679	693	679

IAC/PSCP FORM 101.2
R3/11

FTE ENROLLMENT PROJECTIONS BY GRADE

LEA CALVERT DATE 29-APRIL-24

School WINDY HILL ELEMENTARY SCHOOL

Enrollments as of September 30TH									
	2023 Actual	2024 Year 1	2025 Year 2	2026 Year 3	2027 Year 4	2028 Year 5	2029 Year 6	2030 Year 7	2033 Year 10
PRE_K									
KINDERGARTEN	102	85	94	97	103	98	96	95	93
1st	106	108	86	97	99	105	100	98	96
2nd	99	113	109	88	98	100	107	102	99
3rd	91	105	114	110	89	99	103	109	100
4th	96	98	107	116	113	91	102	105	104
5th	99	102	99	108	118	114	92	104	107
6th									
7th									
8th									
9th									
10th									
11th									
12th									
SP ED									
TOTAL	593	611	609	616	620	607	600	613	599

IAC/PSCP FORM 104101.2
102R3/11

FTE ENROLLMENT PROJECTIONS BY GRADE

LEA CALVERT DATE 29-APRIL-24

School CALVERT MIDDLE SCHOOL

Enrollments as of September 30TH									
	2023 Actual	2024 Year 1	2025 Year 2	2026 Year 3	2027 Year 4	2028 Year 5	2029 Year 6	2030 Year 7	2033 Year 10
PRE_K									
KINDERGARTEN									
1st									
2nd									
3rd									
4th									
5th									
6th	193	208	233	207	193	198	195	178	215
7th	206	197	208	234	208	193	198	195	202
8th	218	212	199	210	235	210	196	200	200
9th									
10th									
11th									
12th									
SP ED									
TOTAL	617	617	640	651	636	601	589	573	617

IAC/PSCP FORM 101.2
R3/11

FTE ENROLLMENT PROJECTIONS BY GRADE

LEA CALVERT DATE 29-APRIL-24

School MILL CREEK MIDDLE SCHOOL

Enrollments as of September 30TH									
	2023 Actual	2024 Year 1	2025 Year 2	2026 Year 3	2027 Year 4	2028 Year 5	2029 Year 6	2030 Year 7	2033 Year 10
PRE_K									
KINDERGARTEN									
1st									
2nd									
3rd									
4th									
5th									
6th	139	150	166	147	151	142	132	138	169
7th	149	141	151	166	147	151	142	132	159
8th	141	152	142	152	168	148	152	143	156
9th									
10th									
11th									
12th									
SP ED									
TOTAL	429	443	459	465	466	441	426	413	484

IAC/PSCP FORM 101.2
R3/11

FTE ENROLLMENT PROJECTIONS BY GRADE

LEA CALVERT DATE 29-APRIL-24

School NORTHERN MIDDLE SCHOOL

Enrollments as of September 30TH									
	2023 Actual	2024 Year 1	2025 Year 2	2026 Year 3	2027 Year 4	2028 Year 5	2029 Year 6	2030 Year 7	2033 Year 10
PRE_K									
KINDERGARTEN									
1st									
2nd									
3rd									
4th									
5th									
6th	247	238	215	220	224	220	210	200	245
7th	239	250	238	215	220	224	220	210	231
8th	196	244	252	241	218	223	226	223	226
9th									
10th									
11th									
12th									
SP ED									
TOTAL	682	732	705	676	662	667	656	633	702

IAC/PSCP FORM 101.2
R3/11

FTE ENROLLMENT PROJECTIONS BY GRADE

LEA CALVERT DATE 29-APRIL-24

School PLUM POINT MIDDLE SCHOOL

Enrollments as of September 30TH									
	2023 Actual	2024 Year 1	2025 Year 2	2026 Year 3	2027 Year 4	2028 Year 5	2029 Year 6	2030 Year 7	2033 Year 10
PRE_K									
KINDERGARTEN									
1st									
2nd									
3rd									
4th									
5th									
6th	216	195	196	244	183	197	198	194	236
7th	227	219	195	196	244	183	197	198	222
8th	209	233	221	198	199	246	185	199	218
9th									
10th									
11th									
12th									
SP ED									
TOTAL	652	647	612	638	626	626	580	591	676

IAC/PSCP FORM 101.2
R3/11

FTE ENROLLMENT PROJECTIONS BY GRADE

LEA CALVERT DATE 29-APRIL-24

School SOUTHERN MIDDLE SCHOOL

Enrollments as of September 30TH									
	2023 Actual	2024 Year 1	2025 Year 2	2026 Year 3	2027 Year 4	2028 Year 5	2029 Year 6	2030 Year 7	2033 Year 10
PRE_K									
KINDERGARTEN									
1st									
2nd									
3rd									
4th									
5th									
6th	138	192	157	152	150	174	164	146	179
7th	154	140	192	157	152	150	174	164	168
8th	138	156	140	194	159	153	151	177	166
9th									
10th									
11th									
12th									
SP ED									
TOTAL	430	488	489	503	461	477	489	487	513

IAC/PSCP FORM 101.2
R3/11

FTE ENROLLMENT PROJECTIONS BY GRADE

LEA CALVERT DATE 29-APRIL-24

School WINDY HILL MIDDLE SCHOOL

Enrollments as of September 30TH									
	2023 Actual	2024 Year 1	2025 Year 2	2026 Year 3	2027 Year 4	2028 Year 5	2029 Year 6	2030 Year 7	2033 Year 10
PRE_K									
KINDERGARTEN									
1st									
2nd									
3rd									
4th									
5th									
6th	208	238	238	205	264	273	233	223	274
7th	251	212	238	238	205	264	273	233	257
8th	262	256	213	240	241	207	266	276	253
9th									
10th									
11th									
12th									
SP ED									
TOTAL	721	706	689	683	710	744	772	732	784

IAC/PSCP FORM 101.2
R3/11

FTE ENROLLMENT PROJECTIONS BY GRADE

LEA CALVERT DATE 29-APRIL-24

School CALVERT HIGH SCHOOL

Enrollments as of September 30TH									
	2023 Actual	2024 Year 1	2025 Year 2	2026 Year 3	2027 Year 4	2028 Year 5	2029 Year 6	2030 Year 7	2033 Year 10
PRE_K									
KINDERGARTEN									
1st									
2nd									
3rd									
4th									
5th									
6th									
7th									
8th									
9th	318	304	314	285	330	334	304	289	275
10th	293	310	296	307	278	324	326	296	305
11th	268	277	293	278	287	259	308	309	289
12th	239	275	284	301	288	298	270	314	274
SP ED									
TOTAL	1118	1166	1187	1171	1183	1215	1208	1208	1143

IAC/PSCP FORM 101.2
R3/11

FTE ENROLLMENT PROJECTIONS BY GRADE

LEA CALVERT DATE 29-APRIL-24

School HUNTINGTOWN HIGH SCHOOL

Enrollments as of September 30TH									
	2023 Actual	2024 Year 1	2025 Year 2	2026 Year 3	2027 Year 4	2028 Year 5	2029 Year 6	2030 Year 7	2033 Year 10
PRE_K									
KINDERGARTEN									
1st									
2nd									
3rd									
4th									
5th									
6th									
7th									
8th									
9th	319	349	361	362	312	332	366	314	312
10th	353	311	341	352	353	302	326	357	299
11th	335	334	294	320	331	333	289	310	311
12th	317	344	342	301	331	340	342	295	297
SP ED									
TOTAL	1324	1338	1338	1335	1327	1307	1323	1276	1219

IAC/PSCP FORM 101.2
R3/11

FTE ENROLLMENT PROJECTIONS BY GRADE

LEA CALVERT DATE 29-APRIL-24

School NORTHERN HIGH SCHOOL

Enrollments as of September 30TH									
	2023 Actual	2024 Year 1	2025 Year 2	2026 Year 3	2027 Year 4	2028 Year 5	2029 Year 6	2030 Year 7	2033 Year 10
PRE_K									
KINDERGARTEN									
1st									
2nd									
3rd									
4th									
5th									
6th									
7th									
8th									
9th	372	364	416	359	410	365	352	405	354
10th	373	363	355	405	350	399	354	345	373
11th	406	352	343	334	382	329	379	334	373
12th	360	417	362	351	344	393	338	388	384
SP ED									
TOTAL	1511	1496	1476	1449	1486	1486	1423	1472	1484

IAC/PSCP FORM 101.2
R3/11

FTE ENROLLMENT PROJECTIONS BY GRADE

LEA CALVERT DATE 29-APRIL-24

School PATUXENT HIGH SCHOOL

Enrollments as of September 30TH									
	2023 Actual	2024 Year 1	2025 Year 2	2026 Year 3	2027 Year 4	2028 Year 5	2029 Year 6	2030 Year 7	2033 Year 10
PRE_K									
KINDERGARTEN									
1st									
2nd									
3rd									
4th									
5th									
6th									
7th									
8th									
9th	263	233	241	236	257	263	235	240	224
10th	235	255	225	234	228	250	254	229	207
11th	242	224	242	212	220	215	239	244	220
12th	267	249	230	249	220	229	224	245	227
SP ED									
TOTAL	1007	961	938	931	925	957	952	958	878

IAC/PSCP FORM 101.2
R3/11

FTE ENROLLMENT PROJECTIONS BY GRADE

LEA CALVERT DATE 29-APRIL-24

School CALVERT COUNTRY SCHOOL

Enrollments as of September 30TH									
	2023 Actual	2024 Year 1	2025 Year 2	2026 Year 3	2027 Year 4	2028 Year 5	2029 Year 6	2030 Year 7	2033 Year 10
PRE_K									
KINDERGARTEN	0	0	0	0	0	0	0	0	0
1st	0	0	0	0	0	0	0	0	0
2nd	1	2	2	2	2	2	2	2	2
3rd	0	0	0	0	0	0	0	0	0
4th	1	2	2	2	2	2	2	2	2
5th	0	0	0	0	0	0	0	0	0
6th	1	2	2	2	2	1	2	2	2
7th	3	4	4	4	3	4	4	4	4
8th	2	3	3	2	3	3	3	3	3
9th	2	2	2	2	2	2	2	2	2
10th	3	3	3	3	3	3	3	3	3
11th	1	2	2	2	2	2	2	2	2
12th	27	28	28	28	28	28	28	28	28
SP ED									
TOTAL	41	48	48	47	47	47	48	48	48

IAC/PSCP FORM 101.2
R3/11

FTE ENROLLMENT PROJECTIONS BY GRADE

LEA CALVERT DATE 29-APRIL-24

School ALTERNATIVE ED

Enrollments as of September 30TH									
	2023 Actual	2024 Year 1	2025 Year 2	2026 Year 3	2027 Year 4	2028 Year 5	2029 Year 6	2030 Year 7	2033 Year 10
PRE_K									
KINDERGARTEN	0	0	0	0	0	0	0	0	0
1st	0	0	0	0	0	0	0	0	0
2nd	0	0	0	0	0	0	0	0	0
3rd	0	0	0	0	0	0	0	0	0
4th	0	0	0	0	0	0	0	0	0
5th	0	0	0	0	0	0	0	0	0
6th	0	0	0	0	0	0	0	0	0
7th	0	0	0	0	0	0	0	0	0
8th	0	0	0	0	0	0	0	0	0
9th	0	0	0	0	0	0	0	0	0
10th	2	2	2	2	2	2	2	2	2
11th	0	0	0	0	0	0	0	0	0
12th	0	0	0	0	0	0	0	0	0
SP ED									
TOTAL	2	2	2	2	2	2	2	2	2

FTE ENROLLMENT PROJECTIONS BY GRADE

CALVERT COUNTY PUBLIC SCHOOLS

ALL FACILITIES FOR 2033

Grade	Count
PRE-K	
KINDERGARTEN	1051
1st	1074
2nd	1114
3rd	1132
4th	1169
5th	1211
6th	1318
7th	1239
8th	1219
9th	1165
10th	1186
11th	1193
12th	1182
SP ED*	48
TOTAL	15,301

*If not included above

THIS PAGE LEFT BLANK

SECTION II

FACILITIES INVENTORY

FACILITIES INVENTORYLEA: Calvert CountyDATE: 4/29/2024

Page 1 of 4

SCHOOL NAME & ADDRESS	GRADES	SRC	PRIOR FALL ENRLMT	% UTIL	ACREAGE	BUILDING DATE		PHYS. COND.	COMMENTS
			9/23			DATE	SQ.FT.		
Appeal Elementary 11655 H. G. Trueman Road Lusby, MD 20657	Pre-K - K	266	130	49%	26.4	1949 1956 1958 1971 1988	59,275	Adequate*	Combined w/PES
Barstow Elementary School 295 Williams Road Prince Frederick, MD 20678	Pre-K - 5	674	649	96%	22	2008	74,865	Adequate*	Partial HVAC Equipment Replacement FY 2029
Beach Elementary 7900 Old Bayside Road Chesapeake Beach, MD 20732	Pre-K - 5	578	522	90%	17.99	1953 1971 1981 2006	55,341	Adequate*	
Calvert Elementary 1450 Dares Beach Road Prince Frederick, MD 20678	Pre-K - 5	582	479	82%	18.2	1964 1974 1981 2007	63,362	Adequate*	Feasibility Study - FY 2025 Planning Request - FY 2028
Dowell Elementary 12680 H. G. Trueman Road Lusby, MD 20657	Pre-K - 5	628	589	94%	19	1999 2007	70,435	Good*	
Huntingtown Elementary 4345 Huntingtown Road Huntingtown, MD 20639	Pre-K - 5	553	474	86%	21.0	1971 1980 2006	62,070	Adequate*	Partial Roof Replacement FY 2030
Mt. Harmony Elementary 900 W. Mt. Harmony Road Owings, MD 20736	Pre-K - 5	604	644	107%	15.0	1961 1970 1975 2007	53,069	Adequate*	Feasibility Study - FY 2029

* Physical condition of schools based on results of revised IAC Facility Maintenance-Effectiveness Assessment (MEA) rubric.
(SRC) Adjusted for "K" Additions

FACILITIES INVENTORYLEA: Calvert CountyDATE: 4/29/2024

Page 2 of 4

SCHOOL NAME & ADDRESS	GRADES	SRC	PRIOR FALL ENRLMT	% UTIL	ACREAGE	BUILDING DATE		PHYS. COND.	COMMENTS
			9/23			DATE	SQ.FT.		
Mutual Elementary 1455 Ball Road Port Republic, MD 20676	Pre-K - 5	501	374	75%	26.0	1975 1989 2007	62,824	Good	Partial HVAC Systemic FY 2029
Patuxent Elementary 35 Appeal Lane Lusby, MD 20657	1 - 5	592	525	89%	26.4	1992 2006	59,049	Adequate*	Combined w/AES Roof and Clerestory Window Replacement FY 2028
Plum Point Elementary 1245 Plum Point Road Huntingtown, MD 20639	Pre-K - 5	602	556	92%	(Shared with Plum Point Middle) 191.0	1991 2006	62,337	Adequate*	HVAC Systemic - FY 2029
St. Leonard Elementary 5370 St. Leonard Road St. Leonard, MD 20685	Pre-K - 5	585	438	75%	28.0	1996 2006	71,680	Good	HVAC Systemic - FY 2029 Roof-FY30
Sunderland Elementary 150 Clyde Jones Road Sunderland, MD 20689	Pre-K - 5	722	631	87%	9.6	1988 2005	69,494	Good	Partial HVAC Systemic FY 2026
Windy Hill Elementary 9550 Boyds Turn Road Owings, MD 20736	Pre-K - 5	702	616	88%	16.0	1996 2006	66,126	Good	HVAC Systemic - FY 2029

* Physical condition of schools based on results of revised IAC Facility Maintenance-Effectiveness Assessment (MEA) rubric.
(SRC) Adjusted for "K" Additions

FACILITIES INVENTORY

LEA: Calvert CountyDATE: 4/29/2024

Page 3 of 4

SCHOOL NAME & ADDRESS	GRADES	SRC	PRIOR FALL ENRLMT	% UTIL	ACREAGE	BUILDING DATE		PHYS. COND.	COMMENTS
			9/23			DATE	SQ.FT.		
Calvert Middle 655 Chesapeake Blvd. Prince Frederick, MD 20678	6 – 8	650	617	95	(Shared with Calvert High) 83.3	2010	104,005	Adequate*	
Mill Creek Middle 12200 Southern Connector Blvd. Lusby, MD 20657	6 – 8	756	429	57%	34	2000	101,300	Good	HVAC Systemic - FY 2028
Northern Middle 2954 Chaneyville Road Owings, MD 20736	6 – 8	680	682	100%	(Shared with Northern High) 112.9	1976	88,780	Good	Construction – FY 2025-28
Plum Point Middle 1475 Plum Point Road Huntingtown, MD 20639	6 – 8	760	652	86%	(Shared with Plum Point Elementary) 191.0	1992	101,300	Adequate*	Partial HVAC Systemic FY 2025 Storefront and Skylight Replacement FY 2025
Southern Middle 9615 H. G. Trueman Road Lusby, MD 20657	6 – 8	795	430	54%	26.0	1979 1996	106,260	Good	
Windy Hill Middle 9550 Boyds Turn Road Owings, MD 20736	6 – 8	760	721	95%	24.0	1998	101,300	Good	HVAC Systemic FY 2025

* Physical condition of schools based on results of revised IAC Facility Maintenance-Effectiveness Assessment (MEA) rubric.

FACILITIES INVENTORYLEA: Calvert CountyDATE: 4/29/2024

Page 4 of 4

SCHOOL NAME & ADDRESS	GRADES	SRC	PRIOR FALL ENRLMT	% UTIL	ACREAGE	BUILDING DATE		PHYS. COND.	COMMENTS
			9/23			DATE	SQ.FT.		
Calvert High 520 Fox Run Blvd. Prince Frederick, MD 20678	9 – 12	1148	1118	97%	83.3	2013	236,300	Adequate*	Field House Renovation FY 2027
Huntingtown High 4125 N. Solomons Island Rd Huntingtown, MD 20639	9 – 12	1500	1324	88%	89	2004	206,248	Adequate*	Tennis Resurfacing FY 2025 Chiller Replacement FY 2028 Field House Renovation FY 2030
Northern High 2950 Chaneyville Road Owings, MD 20736	9 – 12	1440	1511	105%	(Shared with Northern Middle) 112.9	2020	248,973	Adequate*	Mary Harrison Center HVAC Systemic – FY 2025
Patuxent High 12485 Southern Connector Blvd. Lusby, MD 20657	9 – 12	1230	1007	82%	73.0	1996	185,900	Good	Field House – FY 2025 Sewage Pump Station Replacement – FY 2025 Re-roofing – FY 2029
Career and Technology Academy 330 Dorsey Road Prince Frederick, MD 20678	9 – 12	445	Shared with Northern, Huntingtown, Patuxent & Calvert High	N/A	7.0	1970 2005	113,354	Good	
Calvert Country 1350 Dares Beach Road Prince Frederick, MD 20678	Special Ed	120	41	34%	14.82	1958 1983	33,148	Adequate*	Feasibility Study – FY 2025

* Physical condition of schools based on results of revised IAC Facility Maintenance-Effectiveness Assessment (MEA) rubric.

THIS PAGE LEFT BLANK

SECTION III

FACILITIES NEEDS

FACILITIES NEEDS SUMMARYLEA: Calvert CountyDATE: 4/29/2024

EXISTING AND/OR PROPOSED SCHOOL	TYPE OF PROJECT	GRADES	SRC	ENROLLMENTS		JUSTIFICATION FOR PROJECT	PLANNING YEAR REQUEST
				ACTUAL	5 TH YEAR PROJ.		
Northern Middle School	New Construction	6-8	680	682	667	Replacement of the facility is needed to enhance instructional delivery and upgrade systemics.	FY 2025-2028 Adjacent PFA
Calvert Elementary School	New Construction and/or Renovation	Pre-K - 5	582	479	536	Replacement or renovation pending a feasibility study, is needed to enhance instructional delivery and upgrade systemics.	FY 2029 Adjacent PFA
Calvert Country School	New Construction and/or Renovation	Pre-K - 12	120	41	47	Replacement or renovation of the facility pending a feasibility study, is needed to improve instructional delivery and student support at this facility.	FY 2029 Adjacent PFA
Mt. Harmony Elementary	New Construction and/or Renovation	Pre-K - 5	604	644	560	Replacement or renovation pending a feasibility study, of the facility is needed to enhance instructional delivery and upgrade systemics.	FY 2032 Adjacent PFA

FACILITIES NEEDS**SYSTEMIC PROJECTS**LEA: Calvert CountyDATE: 4/29/2024

EXISTING AND/OR PROPOSED SCHOOL	TYPE OF PROJECT	GRADES	SRC	ENROLLMENTS		JUSTIFICATION FOR PROJECT	FUNDING YEAR REQUEST
				ACTUAL	5 TH YEAR PROJ.		
Northern High School – Mary Harrison Center	Partial HVAC Equipment Replacement		1440	1511	1486	Replacement of auditorium HVAC and addition of an independent heating plant. Current heating plant resides in Northern Middle School which will be demolished during replacement project.	FY 2025
Windy Hill Middle School	HVAC Systemic	6-8	760	721	744	Existing chiller is problematic to maintain and no longer supportable by the manufacturer or other vendors. An air cooled chiller will be installed.	FY 2025
Plum Point Middle School	HVAC Systemic	6-8	760	652	626	Partial replacement of HVAC equipment within the 2 story section, that is showing signs of frequent maintenance issues will be replaced. This is a partial systemic to replace some equipment not completed as part of the FY23/24 project due to funding constraints.	FY 2025
Plum Point Middle School	Storefront & Skylight Replacement	6-8	760	652	626	Skylights and curtainwall assemblies at select locations are in need of constant repair and need replacement.	FY 2025

FACILITIES NEEDS**SYSTEMIC PROJECTS**LEA: Calvert CountyDATE: 4/29/2024

EXISTING AND/OR PROPOSED SCHOOL	TYPE OF PROJECT	GRADES	SRC	ENROLLMENTS		JUSTIFICATION FOR PROJECT	PLANNING YEAR REQUEST
				ACTUAL	5 TH YEAR PROJ.		
Sunderland Elementary School	HVAC Systemic	PreK-5	722	631	690	Partial HVAC Systemic consisting of air handlers, terminal units and pneumatic controls within original portion of building, that will be 38 years old.	FY 2026
Patuxent Elementary School	Roof and Clerestory Windows Replacement	1-5	592	Part of AES (PAC) 525	584	Original membrane portion of roof will be beyond its useful life and has begun to show signs of wear. Clerestory windows are source of leaking and will be addressed.	FY 2028
Mill Creek Middle	HVAC Systemic	6 - 8	756	429	441	Full HVAC Systemic, replacing equipment original to the building. Equipment will be 28 years old and beyond its useful life.	FY 2028
Huntingtown High School	HVAC Systemic	9 - 12	1500	1324	1307	Replacement of small chiller for building.	FY 2028
Patuxent High School	Re-roofing	9 - 12	1230	1007	959	The B.U.R. roof is original to the 1996 building, showing signs of wear and tear, and will be beyond its useful life.	FY 2029

FACILITIES NEEDS**SYSTEMIC PROJECTS**LEA: Calvert CountyDATE: 4/29/2024

EXISTING AND/OR PROPOSED SCHOOL	TYPE OF PROJECT	GRADES	SRC	ENROLLMENTS		JUSTIFICATION FOR PROJECT	PLANNING YEAR REQUEST
				ACTUAL	5 TH YEAR PROJ.		
St. Leonard Elementary School	HVAC Systemic	PreK - 5	585	438	497	Full HVAC Systemic, replacing equipment original to the building. Equipment will be 32 years old and beyond its useful life.	FY 2029
Plum Point Elementary School	HVAC Systemic	PreK - 5	602	566	609	Full HVAC Systemic, replacing equipment original to the building. Equipment will be 38 years old and beyond its useful life.	FY 2029
Barstow Elementary School	Partial HVAC Systemic	PreK - 5	674	649	666	The Energy Recovery Units (ERUs) serving the Gym and Cafeteria are showing signs of wear and tear, and will be beyond its useful life.	FY 2029
Windy Hill Elementary School	HVAC Systemic	PreK - 5	703	616	635	Full HVAC Systemic, replacing equipment original to the building. Equipment will be 32 years old and beyond its useful life.	FY 2029
Mutual Elementary School	HVAC Systemic	PreK - 5		374	366	The HVAC equipment in the state modular addition will be 40 years old, well beyond its useful life.	FY 2029

FACILITIES NEEDS**SYSTEMIC PROJECTS**LEA: Calvert CountyDATE: 4/29/2024

EXISTING AND/OR PROPOSED SCHOOL	TYPE OF PROJECT	GRADES	SRC	ENROLLMENTS		JUSTIFICATION FOR PROJECT	PLANNING YEAR REQUEST
				ACTUAL	5 TH YEAR PROJ.		
St. Leonard Elementary School	Roof Replacement	PreK - 5	585	438	497	The existing 4-ply built-up roof is failing and requires replacement.	FY 2030
Huntingtown Elementary School	Partial Re-roofing	PreK - 5	553	474	515	The 1991 B.U.R roof is showing signs of wear and tear, and will be beyond its useful life.	FY 2030

PROJECTED SCHOOL NEEDS

The Northern Middle School Replacement Project design started in FY2024 and Construction funding is being requested starting FY2025 through FY2028. This project will leverage Build to Learn Act (BTL) funding for cash flow purposes to ensure the Construction schedule can be maintained. Funding for the project consists of BTL funds, State CIP funds, and Local funds.

Calvert Elementary and Calvert Country School will be evaluated simultaneously via a feasibility study since they share adjoining parcels. Both schools suffer from outdated spaces and systemic components that fail to meet many of the IAC sufficiency standards. Additionally, due to the highly specialized population of students that Calvert Country School supports, the spaces in the existing facility are no longer adequate for its students' needs. The study is expected in FY 2025 with design in FY 2028. The first year of construction funding would occur in FY 2029.

Mt. Harmony Elementary will undergo a feasibility study in FY 2029 to address space deficiencies and required systemic component upgrades.

In the FY 2025 through FY 2030 cycles, our systemic requests will include:

FY 2025	Mary Harrison Center Auditorium HVAC and Heating Plant
FY 2025	Windy Hill Middle School HVAC Systemic Replacement (HSFF)
FY 2025	Plum Point Middle School Partial HVAC Equipment Replacement (HSFF)
FY 2025	Plum Point Middle School Curtainwall and Skylight Replacement
FY 2026	Sunderland Elementary School HVAC Systemic
FY 2028	Patuxent Elementary School Roof and Clerestory Windows Replacement
FY 2028	Mill Creek Middle School HVAC Systemic
FY 2028	Huntingtown High School Chiller Replacement
FY 2029	Patuxent High School Re-roofing
FY 2029	St. Leonard Elementary School HVAC
FY 2029	Plum Point Elementary HVAC Systemic Replacement
FY 2029	Barstow Elementary Partial HVAC Equipment Replacement
FY 2029	Windy Hill Elementary School HVAC Equipment Replacement

FY 2029	Mutual Elementary School HVAC Equipment Replacement
FY 2030	St. Leonard Elementary School Roof Replacement
FY 2030	Huntingtown Elementary School Partial Roof Replacement

With the exception of select schools which require further evaluation to address outdated instructional spaces that fail to meet the IAC sufficiency standards or anticipate capacity issues, most of our remaining projects fall in the systemic renovation category. The majority of our systemic needs consist of HVAC, roofing, and window replacement projects.

Wes Moore, Governor
Aruna Miller, Lt. Governor



Rebecca L. Flora, AICP, LEED ND / BD+C, Secretary
Kristin R. Fleckenstein, Deputy Secretary

Maryland DEPARTMENT OF PLANNING

5/6/2024

Dr. Andrae Townsel
Superintendent
Calvert County Public Schools
1305 Dares Beach Road
Prince Frederick, MD 20678

Dear Dr. Townsel:

Thank you for submitting the Calvert County Public Schools enrollment projections for 2024-2033, in accordance with the regulations of the Interagency Commission on School Construction (IAC).

The Maryland Department of Planning reviewed your submission and compared your data to the school enrollment projections generated by the State Data Center (see attached) and have found the difference to be less than five percent for the years 2024-2033. Therefore, your projections can be used to prepare your 2024 Educational Facilities Master Plan (EFMP) and 2025 Capital Improvement Program submissions.

When preparing your EFMP submission, please ensure the 2023 actual enrollment on your calculation worksheet is consistent with the official enrollment figure generated by the Maryland State Department of Education. The Maryland Department of Planning recognizes the Maryland State Department of Education's K-12 enrollment figure as the official enrollment for the 2023/2024 school year.

We look forward to receiving your EFMP in July. A copy of this letter and its attachment should be included in the plan. If you have any questions or concerns, please don't hesitate to contact me at chuck.boyd@maryland.gov or (410) 767-1401.

Sincerely,

Charles W. Boyd, AICP
Assistant Secretary of Planning Services

cc: Alex Donahue, Executive Director, Interagency Commission on School Construction
Alfred Sundara, AICP, Manager, Projections and State Data Center

Maryland Department of Planning • 301 West Preston Street, Suite 1101 • Baltimore • Maryland • 21201

Tel: 410.767.4500 • Toll Free: 1.877.767.6272 • TTY users: Maryland Relay • Planning.Maryland.gov

Jurisdiction	2023	2024	2025	2026	2027	2028	2029	2030	2031	2032	2033
Calvert	14,899	15,138	15,045	15,062	15,168	15,238	15,222	15,286	15,282	15,276	15,301
MDP	14,899	14,910	14,960	15,030	15,160	15,300	15,340	15,440	15,510	15,580	15,650
Diff	0	228	85	32	8	-62	-118	-154	-228	-304	-349
% Diff	0.00%	1.53%	0.57%	0.21%	0.05%	-0.41%	-0.77%	-1.00%	-1.47%	-1.95%	-2.23%



Nondiscrimination Statement

Calvert County Public Schools does not discriminate on the basis of race, color, religion, sex, age, ancestry or national origin, familial status, marital status, physical or mental disability, sexual orientation, gender identity and expression, or genetic information in its programs and activities and provides equal access to the Boy Scouts and other designated youth groups. The following persons have been designated to handle inquiries regarding the non-discrimination policies:

- Director of Student Services
- Director of Human Resources
443-550-8000

For further information on notice of non-discrimination, visit the Office for Civil Rights Complaint Assessment System at: <https://ocrcas.ed.gov> or call 1-800-421-3481.

Anti-sexual, Anti-racial and Anti-disability Harassment Statement

Discrimination can manifest itself in behaviors such as bullying, harassment, or intimidation of individuals.

Calvert County Public Schools does not tolerate any form of harassment including, but not limited to, sexual, racial, or disability. Any individual (student, employee, or community member) who believes that they have been subjected to any form of harassment is encouraged to report the allegation of harassment. Students, parents, and community members may report allegations of harassment to: Ms. Cecelia Lewis, Director of Student Services, Calvert County Public Schools, 1305 Dares Beach Road, Prince Frederick, MD 20678

Employees may report allegations of harassment to: Mr. Zachary Seawell, Director of Human Resources, Calvert County Public Schools, 1305 Dares Beach Road, Prince Frederick, MD 20678

Calvert County Public Schools is committed to conducting a prompt investigation for any allegation of harassment. If harassment has occurred, the individual will be disciplined promptly. Disciplinary actions for students found to have engaged in any form of harassment may result in suspension or expulsion. Disciplinary actions for employees found to have engaged in any form of harassment may result in suspension or termination.

Calvert County Public Schools encourages all students, parents, employees, and community members to work together to prevent any form of harassment.

For further information on notice of non-discrimination, visit the Office for Civil Rights Complaint Assessment System at: <https://ocrcas.ed.gov> or call 1-800-421-3481.

Calvert County Public Schools Antiracism Statement

Calvert County Public Schools (CCPS) explicitly denounces racism, bullying, discrimination, white supremacy, hate, and racial inequity in any form within our school community. Furthermore, CCPS will not tolerate the values, structures, and behaviors that perpetuate systemic racism.

Each member of the district, individually and collectively, is responsible for creating and nurturing a safe, antiracist learning environment where each student, staff member, and community partner is a respected and valued member of the CCPS community.

Antoine S. White
President

Dr. Andraé Townsel
Superintendent of Schools

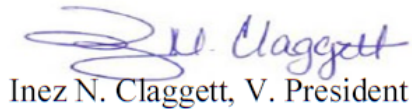
Date: April 26, 2024




June 13, 2024

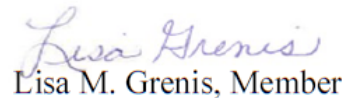
At a regularly scheduled meeting of the Calvert County Public Schools Board of Education on June 13, 2024, the Educational Facilities Master Plan FY 2026 was approved by a vote of 5 to 0.

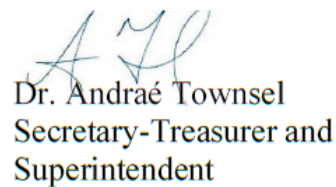

Antoine S. White, President


Inez N. Claggett, V. President


Dawn C. Balinski, Member


Jana L. Smith-Post, Member


Lisa M. Grenis, Member


Dr. Andraé Townsel
Secretary-Treasurer and
Superintendent



Mary Beth Cook, Director

CALVERT COUNTY DEPARTMENT OF PLANNING & ZONING

205 Main Street
Prince Frederick, Maryland 20678
410-535-2348 • 301-855-1243
Fax: 410-414-3092
www.calvertcountymd.gov

Board of Commissioners
Mark C. Cox Sr.
Catherine M. Grasso
Earl F. Hance
Mike Hart
Todd Ireland

May 28, 2024

Dr. Andraé Townsel, Superintendent
Calvert County Public Schools
1305 Dares Beach Road
Prince Frederick, MD 20678

Dear Dr. Townsel,

Thank you for providing the draft FY 2026 Calvert County Public Schools Educational Facilities Master Plan to the Department of Planning & Zoning for review. This department has reviewed the master plan and finds it to be consistent with the Calvert County Comprehensive Plan, adopted in 2019 and amended in 2022.

The Board of County Commissioners must approve funding for any of the proposed FY 2026 capital expenditures as part of the County's Capital Improvement Plan.

Thank you for the opportunity to review the Plan.

Sincerely,

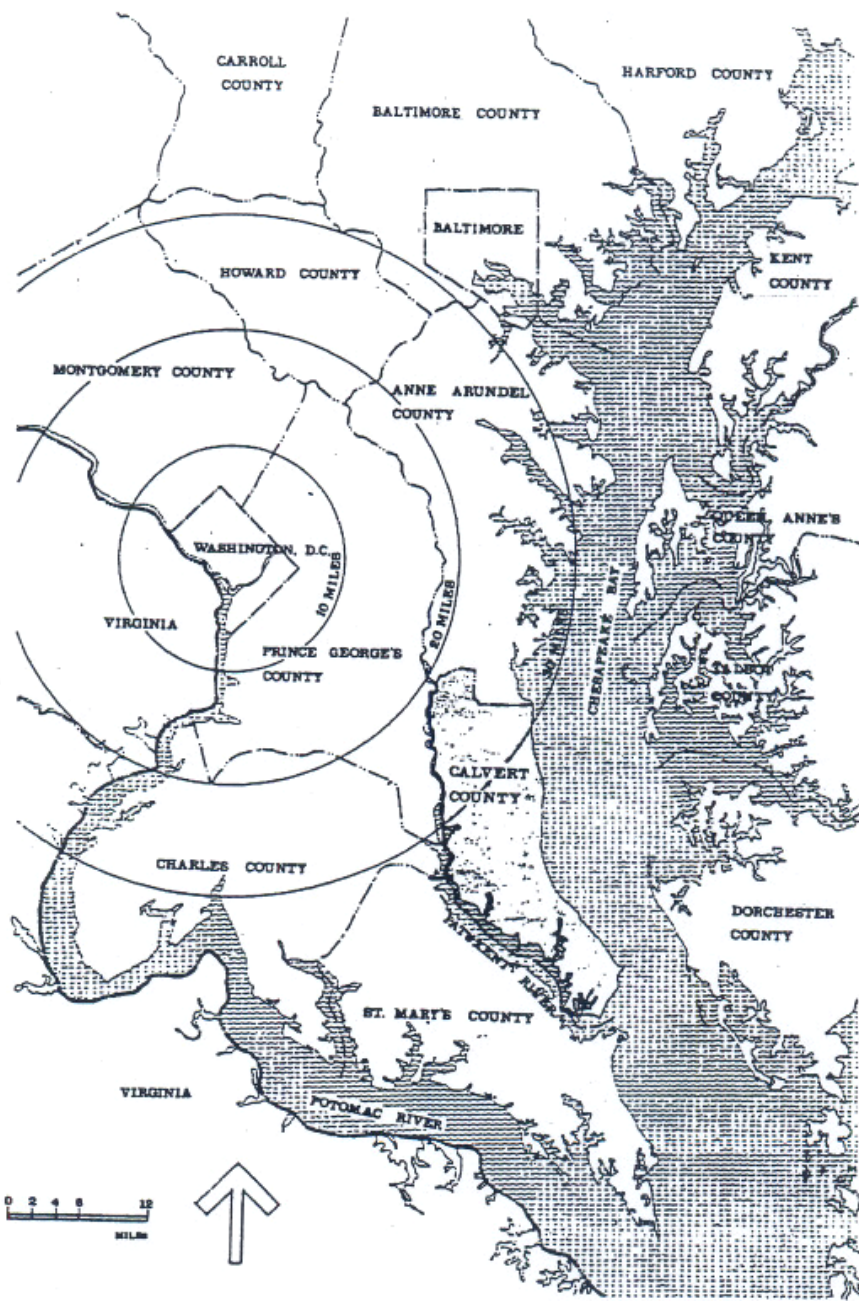
A handwritten signature in blue ink that reads "Mary Beth Cook".

Mary Beth Cook
Director

THIS PAGE LEFT BLANK

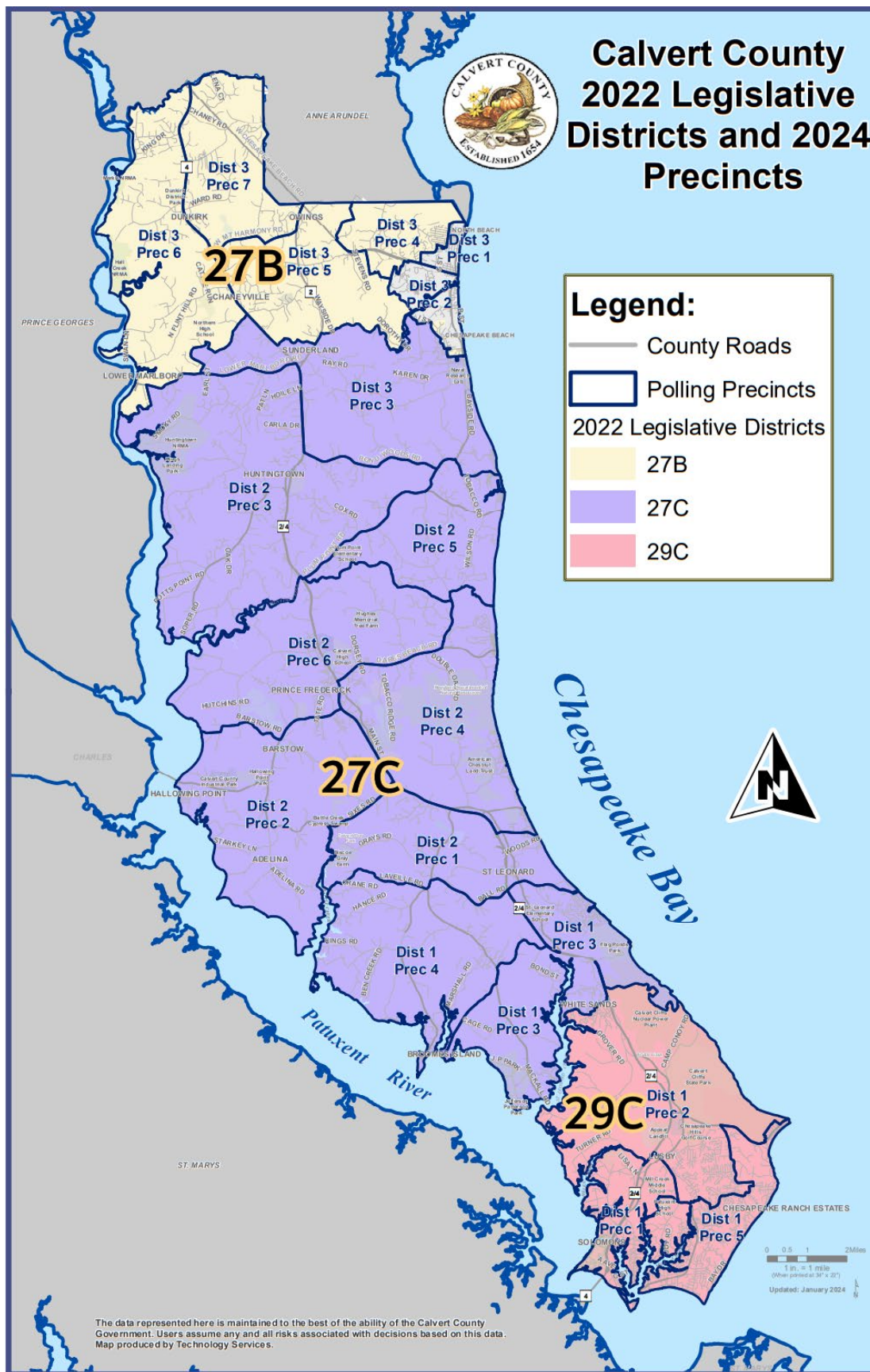
SECTION IV

APPENDIX

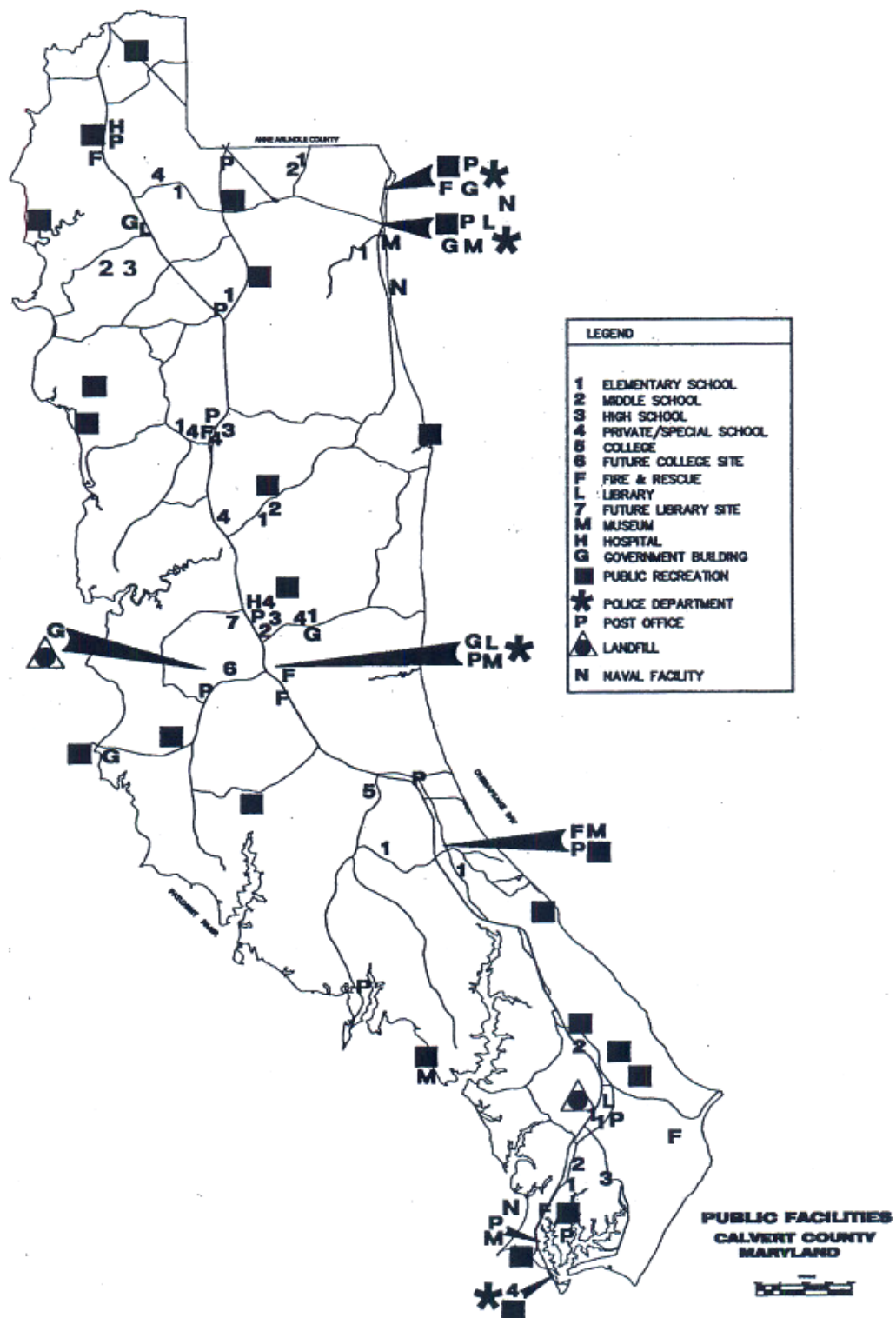


LOCATION

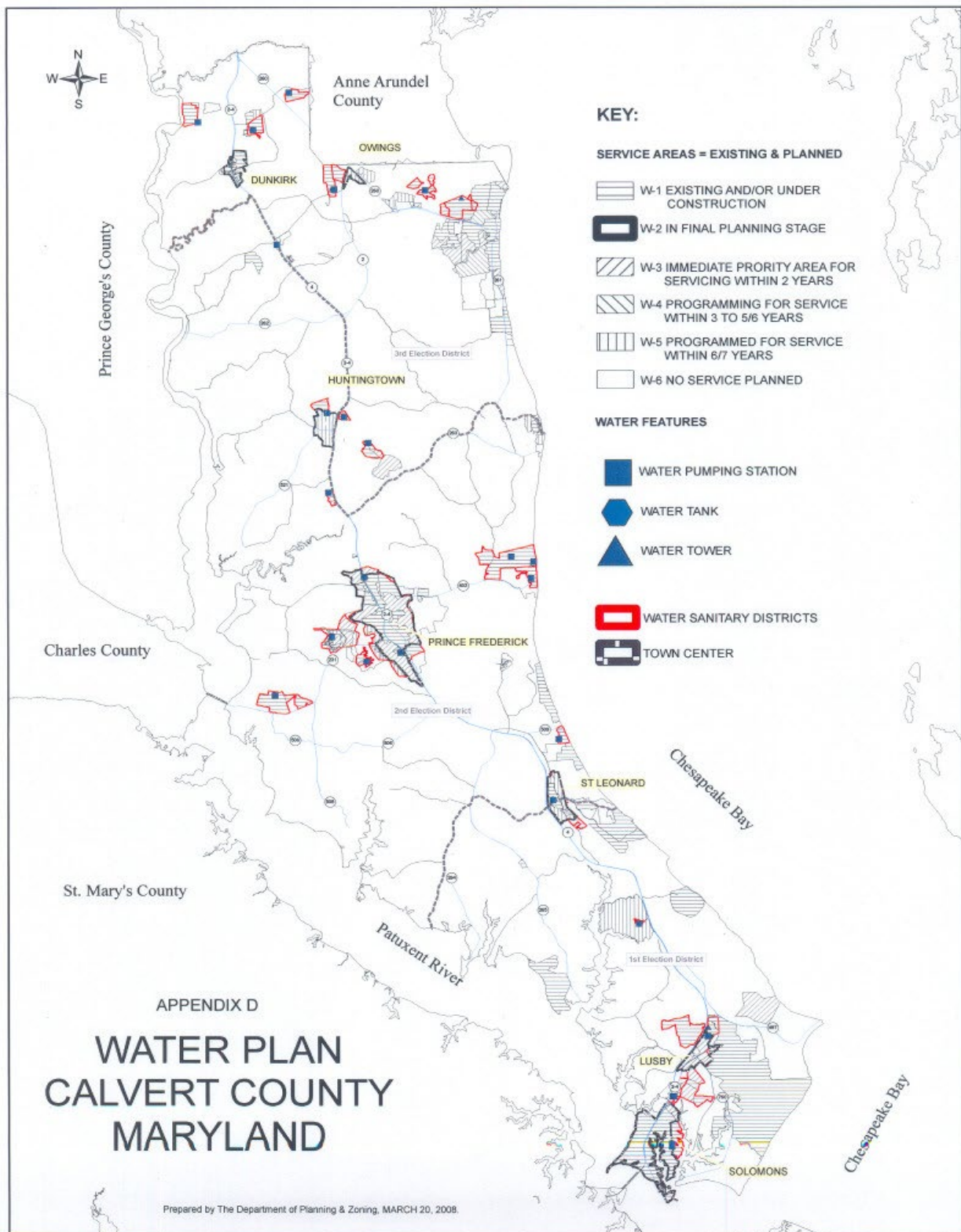
Appendix A



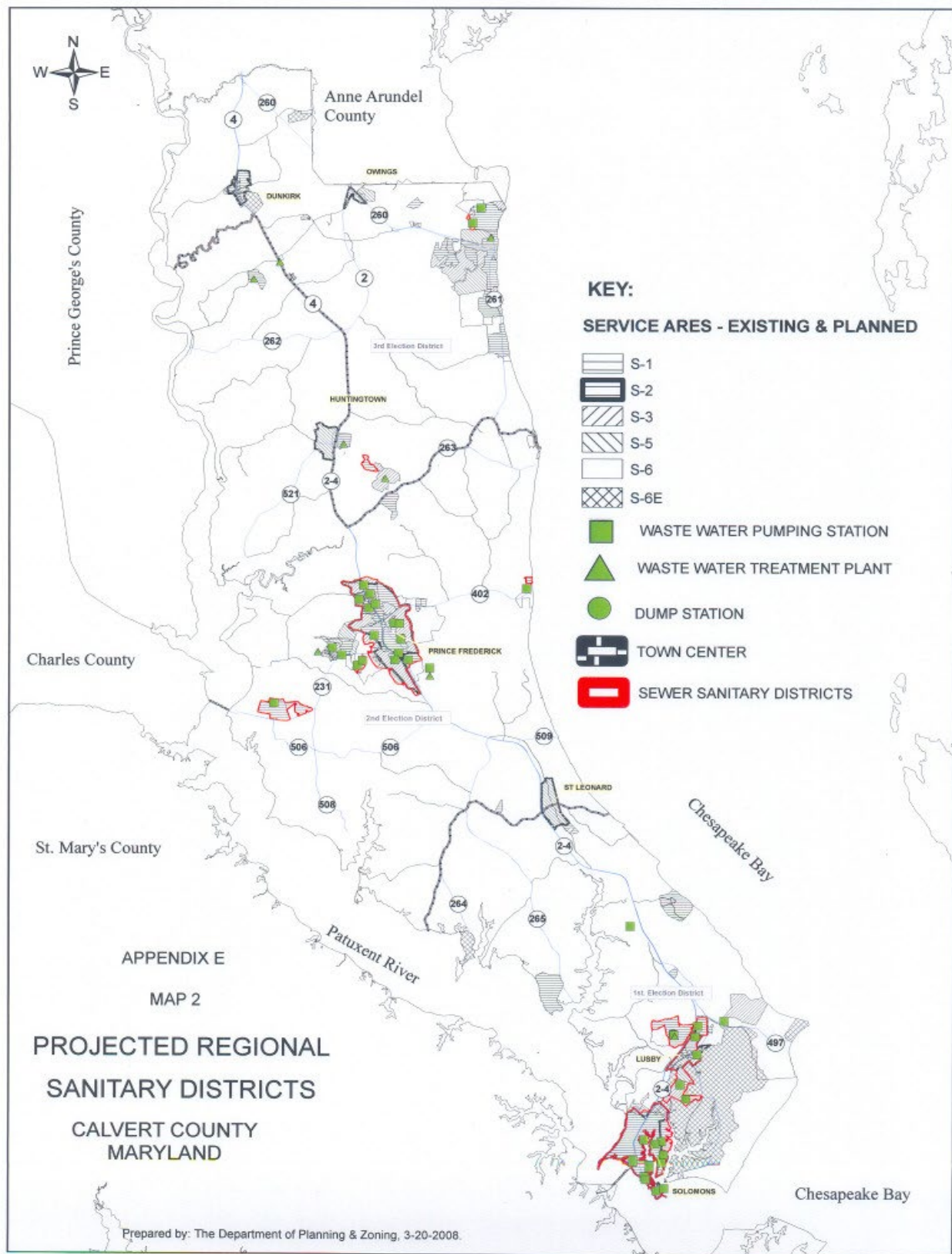
Appendix B



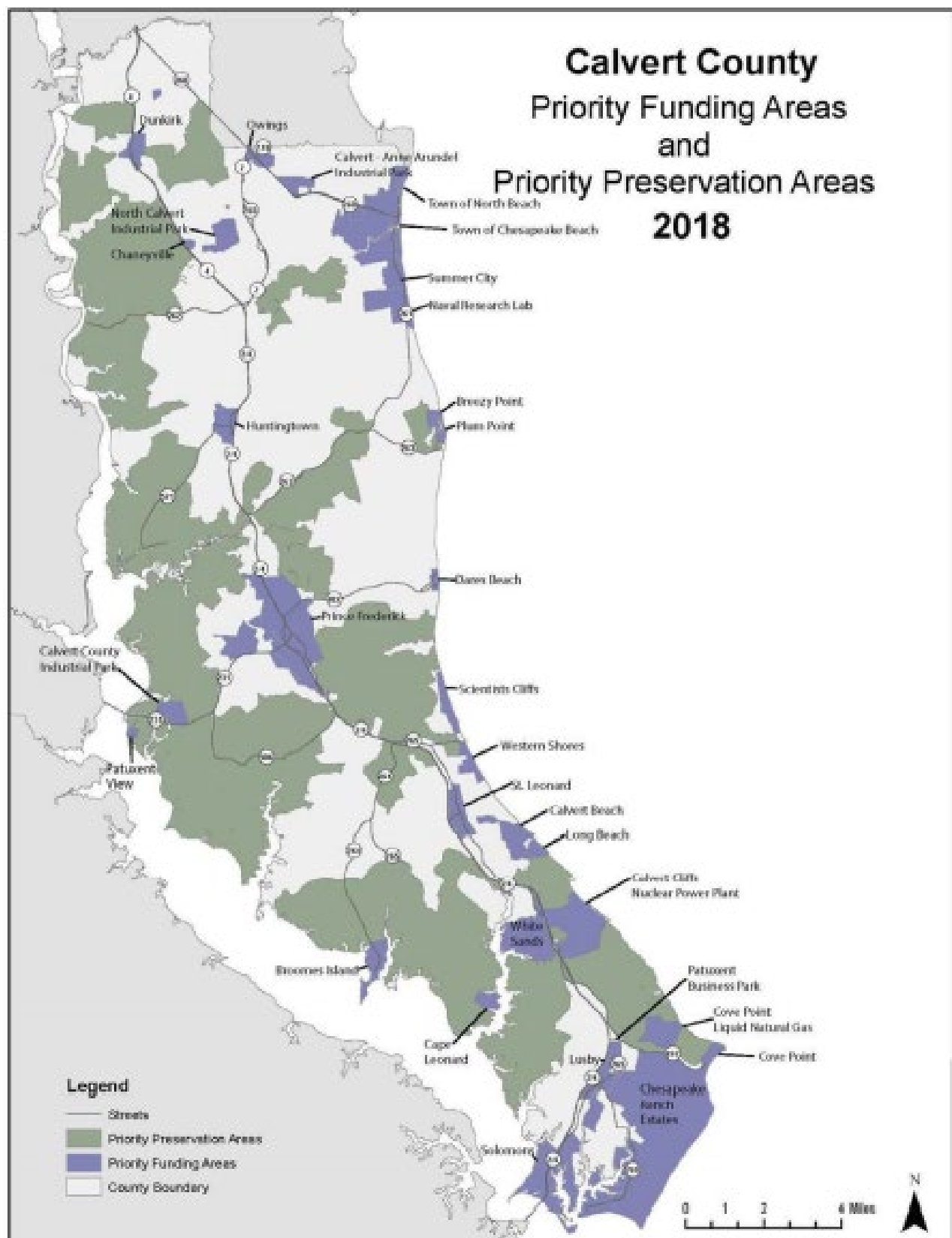
Appendix C



Appendix D

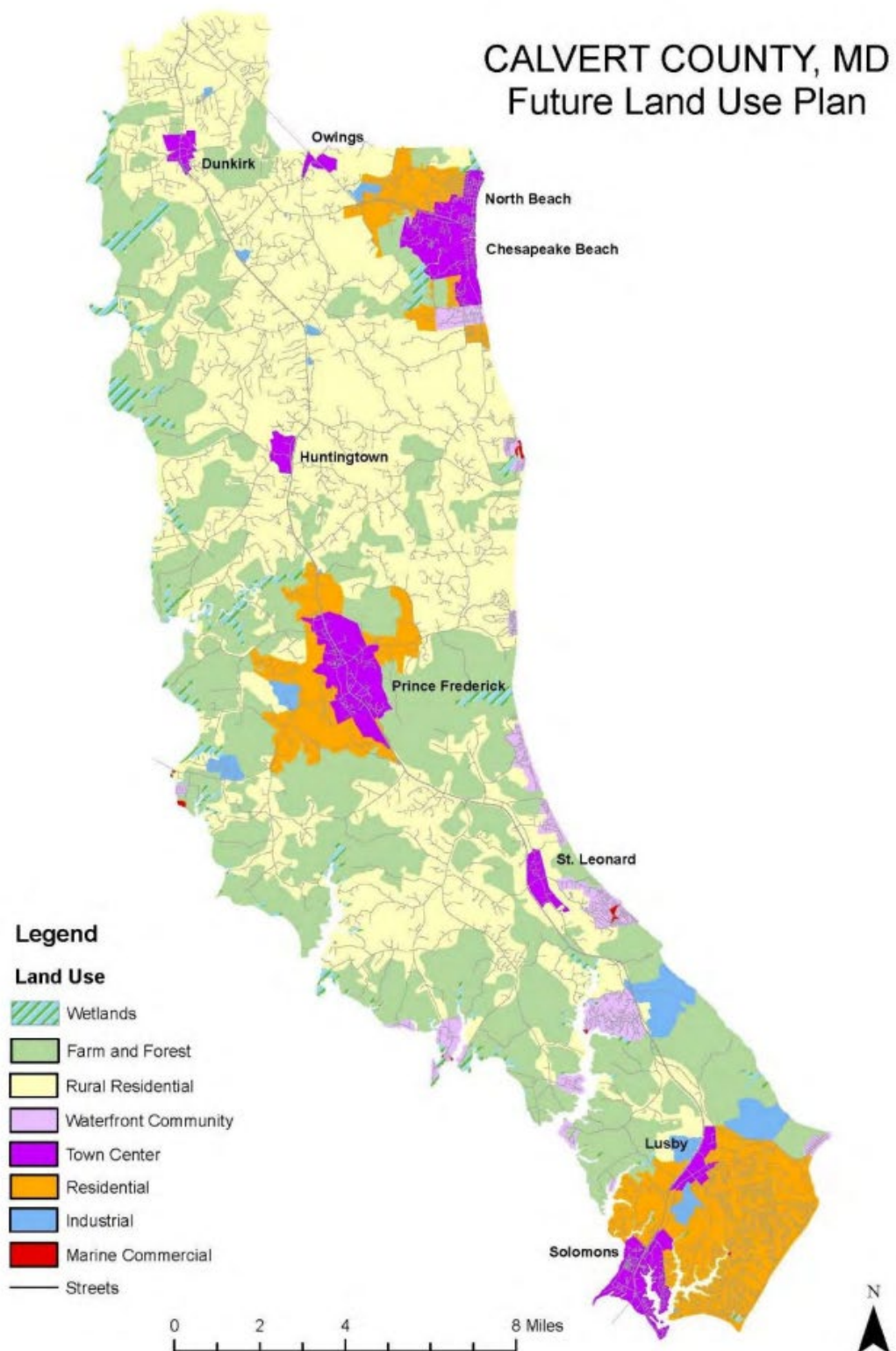


Appendix E



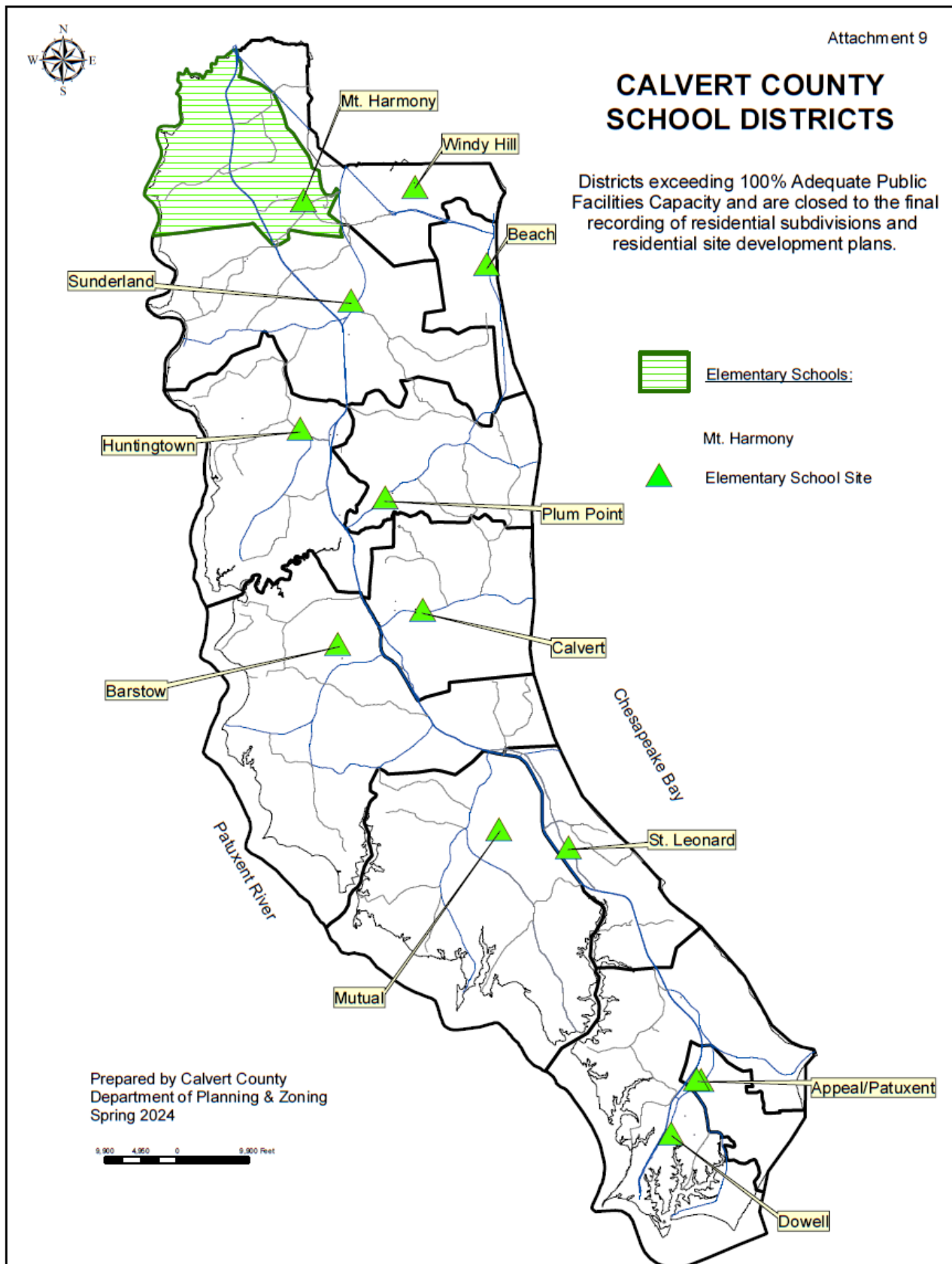
Appendix F-1

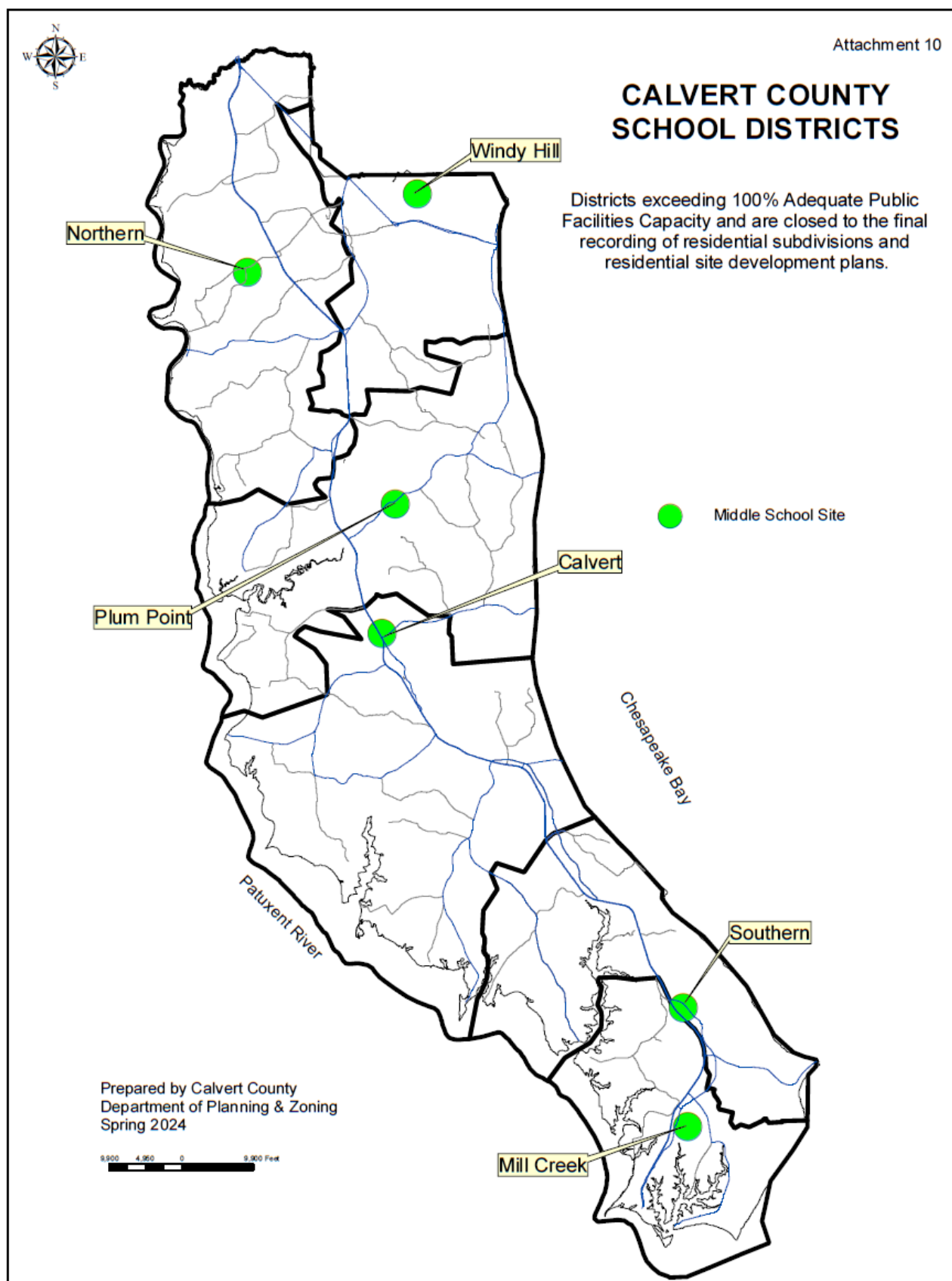
Figure ES-I Future Land Use Plan



CALVERT COUNTY SCHOOL DISTRICTS

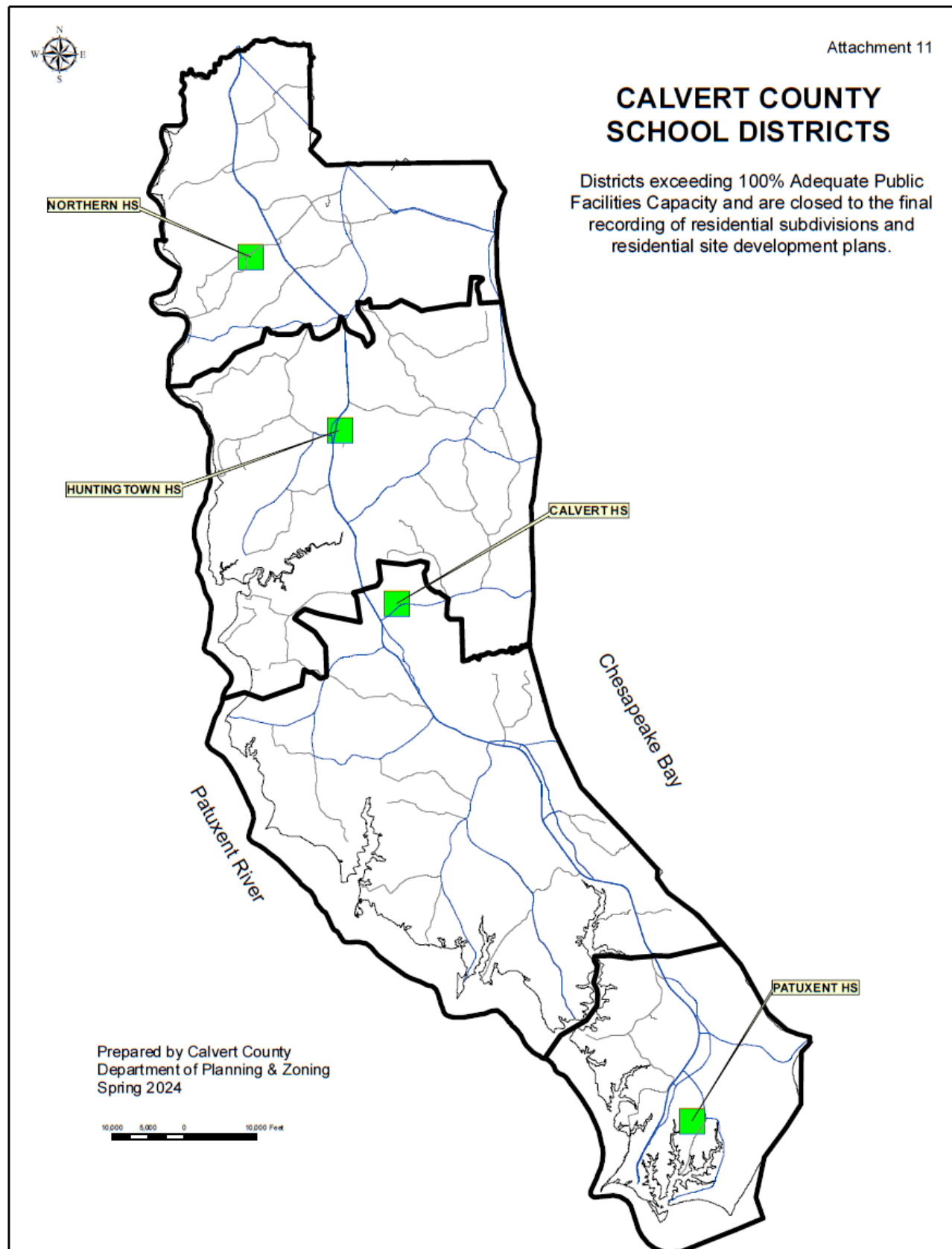
Districts exceeding 100% Adequate Public Facilities Capacity and are closed to the final recording of residential subdivisions and residential site development plans.





CALVERT COUNTY SCHOOL DISTRICTS

Districts exceeding 100% Adequate Public Facilities Capacity and are closed to the final recording of residential subdivisions and residential site development plans.



Appendix I

Calvert County Public Schools

Existing Feeder Plan

Mt. Harmony/Sunderland/Huntingtown Elementary



Northern Middle

Windy Hill/Beach/Sunderland Elementary



Windy Hill Middle

Huntingtown/Beach/Plum Point/Calvert Elementary



Plum Point Middle

Barstow/Calvert/Mutual/St. Leonard Elementary



Calvert Middle

Mutual/St. Leonard/Appeal/Dowell/Patuxent Elementary



Southern Middle

Appeal/Dowell/Patuxent



Mill Creek Middle

Windy Hill Middle/Northern Middle



Northern High

Plum Point Middle/Calvert Middle/Northern Middle



Huntingtown High

Calvert Middle/Southern Middle



Calvert High

Southern Middle/Mill Creek Middle



Patuxent High School

Effective School Year 2015-2016

Appendix J

FORMER SCHOOL INVENTORY**FACILITIES INVENTORY**LEA: Calvert CountyDATE: 4/29/2024

SCHOOL NAME & ADDRESS	GRADE S	SRC	PRIOR FALL ENRLMT	% UTIL	ACREAG E	BUILDING DATE		PHYS. COND.	COMMENTS
			9/10			DATE	SQ.FT.		
Brooks Administration Building 1305 Dares Beach Road Prince Frederick, MD 20678	Admin	---	---	100%	8.45		36,852	Good	
Calvert Middle School 435 Solomons Island Road N Prince Frederick, MD 20678	-	-	-	-	-	-	-	-	Facility closed June 2010. Property and improvements transferred to local government.
Calvert High School 520 Fox Run Boulevard Prince Frederick, MD 20678	-	-	-	-	-	-	-	-	Facility Closed June 2012. New Facility opened March 2014
Hunting Creek Annex 4105 Old Town Road Huntingtown, MD 20639	-	-	-	-	-	-	-	-	Facility closed in 2018. Programs moved to Calvert Country School. Property and improvements transferred to local government.

Appendix K

**Policy Statement #1730 (Administration) of the Board of Education
Regarding Disposal of Surplus and Obsolete Property**

- I. Purpose
 - A. To provide an efficient and effective process for the disposal of surplus and obsolete property
- II. Policy Statement
 - A. The Board of Education is committed to the operation of a cost efficient and up-to-date school system and therefore duly authorizes the Superintendent of Schools to act on its behalf to dispose of surplus or obsolete property by sale, exchange, donation, recycling, or other means which, in the judgment of the Superintendent of Schools, is in the best interest of the school system while striving to have the least impact on the environment as possible. This policy shall not apply to real estate, land, or buildings.
- III. Delegation of Authority
 - A. The Superintendent is directed to develop administrative procedures to implement this policy in accordance with all local policies and local, state and federal laws and regulations and to communicate this policy and accompanying procedures to all relevant parties.
- IV. Exceptions
 - A. There are no exceptions to this policy. However, the Board, by majority vote, may temporarily suspend all or part of this policy. Suspension of all or part of this policy, however, in no way relieves the Board of its obligation to comply with pertinent local, state and federal laws and regulations or the rules and regulations of the State Board of Education and the Maryland State Department of Education.
- V. Review
 - A. This policy will be reviewed at the end of four years, or sooner, if approved by majority vote of the Board of Education in public session.
- VI. Effective Date
 - A. This policy is effective May 11, 2023.

Citations

State Law:

State Reg.:

Federal Law:

Adm. Reg.:

Neg. Agr.:

Administration #1730

Originally Adopted: 3/9/78

Revised: 4/14/05; 4/10/08; 12/9/10; 12/11/14; 4/11/19; 5/11/23

Page 1 of 1

Appendix L

**Administrative Procedures for Policy #1730 (Administration)
Regarding Disposal of Surplus and Obsolete Property**

I. General

- A. All equipment, furniture, textbooks, and other property purchased by or donated to the Calvert County Public Schools shall be inspected periodically by the Superintendent or his/her designee to determine the condition and continued need for such property. This procedure shall not apply to real estate, land, or facilities.
- B. Property, which is obsolete, surplus, or in need of repair will be evaluated by the Superintendent or his/her designee for disposition as follows:
 - 1. Repairs to furniture or equipment which can be carried out in a cost-effective manner will be conducted under the direction of the Director of School Facilities or designee. School principals shall be responsible for monitoring their own building's furnishings.
 - 2. Disposal of textbooks and other property used in the CCPS instructional program will be conducted under the direction of the Assistant Superintendent of Instruction or designee.
 - 3. Disposal of computer hardware will be conducted under the direction of the Director of Information Technology or designee.
 - 4. Disposal of property not used in the instructional program will be conducted under the direction of the Director of School Facilities or designee.
 - 5. Items deemed to have sale value other than for scrap metal shall be held for sale by auction, advertised sale, bid, or other method approved by the Superintendent or designee. If not sold by a designated date, all salvageable parts will be removed, and the remaining portion will be disposed of under the County ordinance governing landfill or recycling operations.
 - 6. Scrap metal shall be sold to scrap metal dealers.
 - 7. Proceeds from the sale of surplus and obsolete property shall be deposited in the appropriate equipment replacement fund.
 - 8. When disposing of property deemed to have no value, such property will be recycled whenever possible.

II. Request for Disposal of Non-Instructional Equipment and Furniture

Administration 1730.1

Procedures Written: 3/9/78; 1/11/07; 9/4/08; 3/14/11; 12/17/14; 9/25/19; 4/21/2023

Page 1 of 2

- A. Schools or departments requesting disposal of equipment must complete the Non-Instructional Equipment Disposal Form and simultaneously submit a work order requesting disposal of unwanted equipment.
 - B. The school principal or department director must sign the Non-Instructional Equipment Disposal Form.
 - C. The signed Non-Instructional Equipment Disposal Form must be submitted to the Supervisor of Operations for review and approval. The Supervisor of Operations shall review the request and make a recommendation to the Director of School Facilities regarding the disposition of the equipment.
 - D. The Director of School Facilities must approve the recommendation.
 - E. The work order will be executed once all approvals have been obtained.
 - F. Following completion of the work order, the Director of School Facilities will note the disposition of the equipment on the Equipment Disposal Form and a copy will be sent to the Department of Finance for adjustments to CCPS inventory records as necessary.
- III. Request for Disposal of Textbooks and other Instructional Property
- A. Schools or departments requesting disposal of textbooks and other instructional property must complete the Textbook and Other Instructional Property Disposal Form and simultaneously submit a work order requesting disposal of the unwanted textbooks or other property.
 - B. The school principal must sign the Textbook and Other Instructional Property Disposal Form.
 - C. The signed Textbook and Other Instructional Property Disposal Form must be submitted to the appropriate Instructional Supervisor for review and approval. The Supervisor of Instruction shall review the request and make a recommendation to the Chief Academic Officer or designee regarding the disposition of the materials and/or equipment.
 - D. The Chief Academic Officer or designee must approve the recommendation prior to disposal of the materials or equipment.
 - E. The work order will be executed once all approvals have been obtained.
 - F. Following completion of the work order, a copy of the appropriate form will be sent to the Department of Finance for adjustments to CCPS inventory records as necessary.
- IV. Request for Disposal of Computer Hardware
- A. Schools or departments requesting disposal of computer hardware must complete a help desk ticket requesting disposal.

Administration 1730.1

Procedures Written: 3/9/78; 1/11/07; 9/4/08; 3/14/11; 12/17/14; 9/25/19; 4/21/2023

Page 2 of 2

Calvert County Public Schools
1305 Dares Beach Road
Prince Frederick, MD 20678

**Administrative Procedures for Policy #1510 (Administration) of the Board of Education
Regarding School Closings, Delayed Openings,
and Early Dismissals Due to Emergencies**

Notification Chain Procedures

- I. Calvert County Public Schools will maintain or contract for an emergency notification system capable of notifying stakeholders of changes to the planned school calendar.
- II. The Superintendent or his/her designee will determine when to activate the emergency notification system.
- III. Principals and Directors will familiarize their staff with Procedure 1510.3 Regarding School Closings, Delayed Openings and Early Dismissals.
 - A. The Director of Transportation and/or designee will annually update and disseminate an emergency phone notification chain to serve as a back-up to the emergency notification system used to inform administrative staff of school and/or work schedule changes. Principals and Directors are responsible for further notification of their staff members.
 - B. A principal or director who is on planned leave is responsible for notifying the principal or director above him/her on the notification chain of the name and telephone contact information of the vice-principal or designee within the department to call in his/her absence. This is to ensure the continuity of communication within the notification chain.
- IV. The Director of Transportation and/or designee will maintain a separate phone notification chain in order to notify public safety agencies, state and county maintenance, non-public special education facilities and local private schools which provide their own transportation of CCPS closings, delayed openings and early dismissals due to emergency.

Administration 1510.2

Policy Originally Adopted: 2/10/00

Procedures Revised: 10/23/00; 4/14/05; 10/23/07; 3/13/08; 1/13/11; 2/3/14; 7/11/19

Page 1 of 1

Appendix M

**Administrative Procedures for Policy #1510 (Administration) of the Board of Education
Regarding School Closings, Delayed Opening and Early Dismissals Due to Emergencies**

- I. Employee Working Hours during Emergency School Closings, Delayed School Openings, and Early School Dismissals
 - A. The Superintendent of Schools or his/her designee will determine when schools will be closed for emergency purposes.
 - B. In instances of inclement weather, the Director of Transportation will collect information and make a recommendation to the Superintendent regarding the status of schools. The Director of Transportation shall consult the Director of School Facilities as part of this process.
 - C. In instances of activation of the county government's Emergency Operations Center, the CCPS representative will inform the Superintendent and/or designee of information pertaining to the schools and community.
 - D. When schools are to be closed, the office of the Superintendent, in cooperation with the department heads that may be involved, may prepare a statement for dissemination to the public. The statement shall include the purpose of the emergency closing, the time limits prescribed, and the order in which the closing is to proceed.
 - E. If on a given day schools have a scheduled two-hour early dismissal and a two-hour delayed opening is announced, then students will NOT be dismissed early and will remain in school until the end of their regular school day.
- II. These procedures set forth the employee working hours during emergency school closings, delayed school openings, and early school dismissals. Codes have been developed and defined below.
 - A. The following positions are designated as emergency personnel and these staff members are to report to work as noted in the Code descriptions below.
 - 1. Superintendent and/or his/her designee
 - 2. Designated emergency maintenance staff
 - 3. School Facilities supervisory personnel
 - 4. Transportation supervisory personnel
 - 5. Building Services Manager and Building Services Assistant Manager at all buildings
- III. Employee Working Hours During Inclement Weather and Other Emergency Conditions

Administration 1510.3

Revised: 10/23/00; 4/14/05; 11/1/06; 2/1/07; 10/16/07; 3/10/09; 3/1/10, 1/13/11, 2/4/14; 10/13/14; 12/21/16; 4/18/18; 7/9/19; 12/2/21; 12/4/23

Page 1 of 3

Appendix N

A. WHEN SCHOOLS ARE CLOSED (Codes white, red, yellow, and green are only used when schools are closed for students.)

1. Code White: A Code White is called when conditions are not safe for any employee to attempt to report to work. Safety concerns may include road conditions or conditions at CCPS facilities including school buildings. No employees are to report to work when a Code White is called.
 - a. No employees report. (Code White)
2. Code Red: A Code Red is called when conditions are not safe for non-emergency personnel to report to work. Safety concerns may include road conditions or conditions at CCPS facilities including school buildings. Non-emergency employees are not to report to work when a Code Red is called.
 - a. All emergency personnel report as directed. (Code Red)
 - b. All other personnel do not report to work.
3. Code Yellow: A Code Yellow is called when conditions may be dangerous but are anticipated to improve so as to allow employees to safely get to work.
 - a. Designated emergency personnel will report to work as directed.
 - b. The 12-month non-emergency school-based employee work hours will be 9:00 a.m. – 3:30 p.m.
 - c. Liberal Leave is in effect. Employees must notify their immediate supervisor.
 - d. Afternoon/Evening activities are canceled.
 - e. Child Care is Closed.
 - f. Schools closed for all students and 10- and 11-month employees
4. Code Green: A code green is called when students are not reporting to school due to inclement weather, but conditions are safe for employees to report at the normal time.
 - a. All emergency personnel report as usual.
 - b. All 12-month employees report on time (Code Green).
 - c. Liberal leave is in effect. Employees must notify their immediate supervisor.
 - d. Schools closed for all students and 10- and 11-month employees.

IV. WHEN SCHOOLS ARE DELAYED OR WHEN THERE IS AN EARLY DISMISSAL

- A. Typically, a two-hour delay or two-hour early release will be used when conditions warrant. In unusual circumstances, other schedules such as a three-hour delay or three-hour early dismissal may be used at the Superintendent's discretion.

Administration 1510.3

Revised: 10/23/00; 4/14/05; 11/1/06; 2/1/07; 10/16/07; 3/10/09; 3/1/10, 1/13/11, 2/4/14; 10/13/14; 12/21/16; 4/18/18; 7/9/19; 12/2/21; 12/4/23

Page 2 of 3

1. Two-Hour Delayed Opening

- a. School opening will be delayed 2 hours.
- b. 12-month certificated employees, including emergency personnel, report on time. 12-month educational support staff may report up to one hour late.
- c. No Child Nutrition Workers are to report prior to 8:00 a.m.
- d. The workday for 10- and 11-month employees will begin two hours after their regularly scheduled start time.

B. Early Dismissals

1. Two-Hour Early Dismissal

- a. Schools closed two hours early.
- b. 12-month personnel, including emergency personnel, will work regular hours unless released by the Superintendent or his/her designee.
- c. 10- and 11-month employees will be released two hours before their regularly scheduled end time of their contractual workday.

C. One-Hour Early Dismissal

- a. Schools closed one hour early.
- b. 12-month personnel, including emergency personnel, will work regular hours unless released by the Superintendent or his/her designee.
- c. 10- and 11-month employees will be released one hour before their regularly scheduled end time of their contractual workday.

V. Liberal Leave Policy

- A. Employees are granted leave without prior written notification or requests being made. Employees must notify their supervisor and complete any necessary leave slips upon their return to work.

SCHOOL FACILITY

*Appeal Elementary School
11655 H. G. Trueman Road
Lusby, MD 20657*

Building Area	59,275 sq. ft.
Number of Floors	1
Program	PreK – K
Teaching Stations	10
Special Education	4
Total Teaching Stations	14
Rated Capacity	266
Age of Structure	Constructed 1949
Renovations and Additions	1956, 1958, 1971, 1988, 2005
General Structure	Masonry Non-com. 1949 Section Wood Trusses. B.U.R.
Heating / Air Conditioning	AHU's & RTU's w/DX., Oil-fired boiler. No chiller.
Fire Suppression	100%
Total Site Area	26.4 acres (shared with Patuxent Elementary)
Amount of Site Activity Area	6.5 acres
Water	Private well and public for fire suppression
Sewer	Public
Community Outlook	Growth Area, Lusby Town Center

Appendix O

THIS PAGE LEFT BLANK

SCHOOL FACILITY

*Barstow Elementary School
295 J. W. Williams Road
Prince Frederick, MD 20678*

Building Area	75,635
Number of Floors	2
Program	PreK-5
Teaching Stations	28
Special Education	4
Total Teaching Stations	32
Rated Capacity	674
Age of Structure	Constructed 2008
Renovations and Additions	None
General Structure	Brick & Concrete Block Masonry, Non-Com., B.U.R.
Heating / Air Conditioning	Geothermal System
Fire Suppression	100%
Total Site Area	22 acres
Amount of Site Activity Area	13 acres
Water	Public
Sewer	Public
Community Outlook	Growth Area, Prince Frederick Town Center

THIS PAGE LEFT BLANK

THIS PAGE LEFT BLANK

THIS PAGE LEFT BLANK

SCHOOL FACILITY

*Beach Elementary School
7900 Old Bayside Road
Chesapeake Beach, MD 20732*

Building Area	74,444 sq. ft.
Number of Floors	3
Program	PreK-5
Teaching Stations	25
Special Education	1
Total Teaching Stations	26
Rated Capacity	578
Age of Structure	Constructed 2024
Renovations and Additions	None
General Structure	Steel Frame, Masonry, Architectural Fiber Cement Panel, Non-Com., TPO
Heating / Air Conditioning	Electric
Fire Suppression	100%
Total Site Area	17.99 acres
Amount of Site Activity Area	7 acres
Water	Town of Chesapeake Beach
Sewer-	Town of Chesapeake Beach
Community Outlook	Growth Area, Town of Chesapeake Beach

THIS PAGE LEFT BLANK

THIS PAGE LEFT BLANK

THIS PAGE LEFT BLANK

SCHOOL FACILITY

*Calvert Elementary School
1450 Dares Beach Road
Prince Frederick, MD 20678*

Building Area	63,362 sq. ft.
Number of Floors	1
Program	PreK-5
Teaching Stations	24
Special Education	5
Total Teaching Stations	29
Rated Capacity	582
Age of Structure	Constructed 1964
Renovations and Additions	1974, 1981, 2007
General Structure	Masonry, Non-Com., B.U.R.
Heating / Air Conditioning	AHU's & RTU's w/Dx., Gas fired boiler, Chiller
Fire Suppression	0%
Total Site Area	18.2 acres
Amount of Site Activity Area	7 acres
Water	Private Well
Sewer	Public
Community Outlook	Growth Area, Prince Frederick Town Center

THIS PAGE LEFT BLANK

SCHOOL FACILITY

*Dowell Elementary School
12680 H. G. Trueman Road
Lusby, MD 20657*

Building Area	70,435 sq. ft.
Number of Floors	2
Program	PreK-5
Teaching Stations	25
Special Education	6
Total Teaching Stations	31
Rated Capacity	628
Age of Structure	Constructed 1999
Renovations and Additions	2007
General Structure	Masonry, Non-Com., B.U.R.
Heating / Air Conditioning	AHU's, Gas-fired boiler, Chiller
Fire Suppression	100%
Total Site Area	19 acres
Amount of Site Activity Area	TBD acres
Water	Public
Sewer	Public
Community Outlook	Growth Area, Solomons Town Center

THIS PAGE LEFT BLANK

SCHOOL FACILITY

*Huntingtown Elementary School
4345 Huntingtown Road
Huntingtown, MD 20639*

Building Area	62,070 sq. ft.
Number of Floors	1
Program	PreK-5
Teaching Stations	23
Special Education	3
Total Teaching Stations	26
Rated Capacity	553
Age of Structure	Constructed 1971
Renovations and Additions	1980, 2006
General Structure	Masonry, Non-Com., B.U.R.
Heating / Air Conditioning	RTU's w/DX., Oil fired boiler
Fire Suppression	100%
Total Site Area	21 acres
Amount of Site Activity Area	11 acres
Water	Private Well
Sewer	Septic System
Community Outlook	Stabilized area, Huntingtown Town Center

THIS PAGE LEFT BLANK

SCHOOL FACILITY

*Mt. Harmony Elementary School
900 West Mt. Harmony Road
Owings, MD 20736*

Building Area	53,069 sq. ft.
Number of Floors	1
Program	K-5
Teaching Stations	26
Special Education	1
Total Teaching Stations	27
Rated Capacity	604
Age of Structure	Constructed 1961
Renovations and Additions	1970, 1975, 2007
General Structure	Masonry, Non-Com., B.U.R.
Heating / Air Conditioning	RTU's w/DX., Oil fired boiler
Fire Suppression	0%
Total Site Area	15 acres
Amount of Site Activity Area	10 acres
Water	Private Well
Sewer	Septic System
Community Outlook	Growth Area

THIS PAGE LEFT BLANK

SCHOOL FACILITY

*Mutual Elementary School
1455 Ball Road
Port Republic, MD 20676*

Building Area	62,824 sq. ft.
Number of Floors	1
Program	K-5
Teaching Stations	20
Special Education	6
Total Teaching Stations	25
Rated Capacity	501
Age of Structure	Constructed 1975
Renovations and Additions	1989, 2007
General Structure	Masonry, Non-Com., B.U.R.
Heating / Air Conditioning	AHU's & RTU's w/Dx., Oil fired boilers
Fire Suppression	100%
Total Site Area	26 acres
Amount of Site Activity Area	5 acres
Water	Private Well
Sewer	Septic System
Community Outlook	Stabilized Area

THIS PAGE LEFT BLANK

SCHOOL FACILITY

*Patuxent Elementary School
35 Appeal Lane
Lusby, MD 20657*

Building Area	59,049 sq. ft.
Number of Floors	1
Program	1-5
Teaching Stations	21
Special Education	7
Total Teaching Stations	28
Rated Capacity	592
Age of Structure	Constructed 1992
Renovations and Additions	2006
General Structure	Masonry, Non-Com., Architectural Metal Panel and Membrane Roof
Heating / Air Conditioning	AHU's, Oil fired boiler, Chiller
Fire Suppression	100%
Total Site Area	26.4 acres (shared with Appeal Elementary)
Amount of Site Activity Area	9.6 acres
Water	Private Well
Sewer	Public
Community Outlook	Growth Area, Lusby Town Center

THIS PAGE LEFT BLANK

SCHOOL FACILITY

*Plum Point Elementary School
1245 Plum Point Road
Huntingtown, MD 20639*

Building Area	62,337 sq. ft.
Number of Floors	1
Program	PreK-5
Teaching Stations	26
Special Education	3
Total Teaching Stations	29
Rated Capacity	602
Age of Structure	Constructed 1991
Renovations and Additions	2006
General Structure	Masonry, Non-Com., Architectural Metal Panel and Membrane Roof
Heating / Air Conditioning	AHU's, Oil fired boiler, Chiller
Fire Suppression	100%
Total Site Area	191 acres (shared with Plum Point Middle)
Amount of Site Activity Area	20 acres
Water	Private Well
Sewer	Septic System
Community Outlook	No Growth Area

THIS PAGE LEFT BLANK

SCHOOL FACILITY

*St. Leonard Elementary School
5370 St. Leonard Road
St. Leonard, MD 20685*

Building Area	71,680 sq. ft.
Number of Floors	2
Program	PreK-5
Teaching Stations	25
Special Education	4
Total Teaching Stations	28
Rated Capacity	585
Age of Structure	Constructed 1996
Renovations and Additions	2006
General Structure	Masonry, Non-Com., B.U.R.
Heating / Air Conditioning	AHU's, Oil fired boiler, Chiller
Fire Suppression	100%
Total Site Area	28 acres
Amount of Site Activity Area	15 acres
Water	Public
Sewer	Septic System
Community Outlook	Stabilized Area, St. Leonard Town Center

THIS PAGE LEFT BLANK

SCHOOL FACILITY

*Sunderland Elementary School
150 Clyde Jones Road
Sunderland, MD 20689*

Building Area	69,494 sq. ft.
Number of Floors	2
Program	Pre-K-5
Teaching Stations	30
Special Education	2
Total Teaching Stations	32
Rated Capacity	722
Age of Structure	Constructed 1988
Renovations and Additions	2005
General Structure	Masonry, Non-Com., Architectural Metal Panel and Membrane Roof
Heating / Air Conditioning	AHU's, Oil fired boiler, Chiller
Fire Suppression	100%
Total Site Area	9.623 acres
Amount of Site Activity Area	9.623 acres
Water	Private Well
Sewer	Septic System
Community Outlook	Stabilized Area

THIS PAGE LEFT BLANK

SCHOOL FACILITY

*Windy Hill Elementary School
9550 Boyd's Turn Road
Owings, MD 20736*

Building Area	66,126 sq. ft.
Number of Floors	1
Program	PreK-5
Teaching Stations	30
Special Education	2
Total Teaching Stations	32
Rated Capacity	702
Age of Structure	Constructed 1996
Renovations and Additions	2006
General Structure	Masonry, Non-Com., Architectural Metal Panel and Membrane Roof
Heating / Air Conditioning	AHU's, Oil fired boiler, Chiller
Fire Suppression	100%
Total Site Area	16 acres
Amount of Site Activity Area	15 acres
Water	Public
Sewer	Septic System
Community Outlook	Growth Area, Town of Chesapeake Beach

THIS PAGE LEFT BLANK

SCHOOL FACILITY

*Calvert Country School
1350 Dares Beach Road
Prince Frederick, MD 20678*

Building Area	33,148 sq. ft.
Number of Floors	1
Program	Serves Special needs Children K-12+
Teaching Stations	0
Special Education	18 (Flexible Spaces)
Total Teaching Stations	18
Rated Capacity	120
Age of Structure	Constructed 1958
Renovations and Additions	1983
General Structure	Masonry Non-Com., B.U.R.
Heating / Air Conditioning	AHU's, Gas-fired boiler
Fire Suppression	0%
Total Site Area	14.82 acres
Amount of Site Activity Area	12 acres
Water	Private Well
Sewer	Public
Community Outlook	Growth Area, Prince Frederick Town Center

THIS PAGE LEFT BLANK

SCHOOL FACILITY

*Calvert Middle School
655 Chesapeake Blvd.
Prince Frederick, MD 20678*

Building Area	104,005 sq. ft.
Number of Floors	2
Program	6-8
Teaching Stations	37
Special Education	4
Total Teaching Stations	41
Rated Capacity	650
Age of Structure	Constructed 2010
Renovations and Additions	None
General Structure	Brick and Concrete Block Masonry, Non-com, and B.U.R.
Heating / Air Conditioning	Geothermal System
Fire Suppression	100%
Total Site Area	83.3 acres shared with Calvert High School
Amount of Site Activity Area	11 acres
Water	Public
Sewer	Public
Community Outlook	Growth Area, Prince Frederick Town Center

THIS PAGE LEFT BLANK

THIS PAGE LEFT BLANK

THIS PAGE LEFT BLANK

SCHOOL FACILITY

*Mill Creek Middle School
12200 Southern Connector Blvd.
Lusby, MD 20657*

Building Area	101,300 sq. ft.
Number of Floors	2
Program	6-8
Teaching Stations	30
Special Education	3
Total Teaching Stations	34
Rated Capacity	756
Age of Structure	Constructed 2000
Renovations and Additions	None
General Structure	Masonry Non-Com., B.U.R.
Heating / Air Conditioning	Geothermal System
Fire Suppression	100%
Total Site Area	34 acres
Amount of Site Activity Area	30 acres
Water	Public
Sewer	Public
Community Outlook	Growth Area, Lusby Town Center

THIS PAGE LEFT BLANK

SCHOOL FACILITY

*Northern Middle School
2954 Chaneyville Road
Owings, MD 20736*

Building Area	88,780 sq. ft.
Number of Floors	1
Program	6-8
Teaching Stations	25
Special Education	4
Total Teaching Stations	29
Rated Capacity	680
Age of Structure	Constructed 1976
Renovations and Additions	None
General Structure	Masonry Non-Com., B.U.R.
Heating / Air Conditioning	Oil-fired boiler, central air
Fire Suppression	100%
Total Site Area	112.92 acres (shared with Northern High School)
Amount of Site Activity Area	25 acres
Water	Private Well (shared with Northern High School)
Sewer	Sewage Treatment Plant (shared with Northern High School)
Community Outlook	Growth Area, Dunkirk Town Center

THIS PAGE LEFT BLANK

SCHOOL FACILITY

*Plum Point Middle School
1475 Plum Point Road
Huntingtown, MD 20639*

Building Area	101,300 sq. ft.
Number of Floors	3
Program	6-8
Teaching Stations	29
Special Education	3
Total Teaching Stations	32
Rated Capacity	760
Age of Structure	Constructed 1992
Renovations and Additions	None
General Structure	Masonry Non-Com., Architectural Metal Panel and Membrane Roof
Heating / Air Conditioning	AHU's, Oil-fired boiler, chiller
Fire Suppression	100%
Total Site Area	191 acres (shared with Plum Point Elementary School)
Amount of Site Activity Area	22 acres
Water	Private Well
Sewer	Septic System
Community Outlook	Growth Area

THIS PAGE LEFT BLANK

THIS PAGE LEFT BLANK

THIS PAGE LEFT BLANK

SCHOOL FACILITY

*Southern Middle School
9615 H. G. Trueman Road
Lusby, MD 20657*

Building Area	106,260 sq. ft.
Number of Floors	1
Program	6-8
Teaching Stations	31
Special Education	3
Total Teaching Stations	34
Rated Capacity	795
Age of Structure	Constructed 1979
Renovations and Additions	1996
General Structure	Masonry Non-Com., B.U.R.
Heating / Air Conditioning	AHU's, Gas-fired boiler, chiller
Fire Suppression	100%
Total Site Area	26.04 acres
Amount of Site Activity Area	14.36 acres
Water	Private Well
Sewer	Septic System
Community Outlook	Growth Area, Lusby Town Center

THIS PAGE LEFT BLANK

SCHOOL FACILITY

*Windy Hill Middle School
9560 Boyd's Turn Road
Owings, MD 20736*

Building Area	101,300 sq. ft.
Number of Floors	2
Program	6-8
Teaching Stations	29
Special Education	3
Total Teaching Stations	32
Rated Capacity	760
Age of Structure	Constructed 1988
Renovations and Additions	None
General Structure	Masonry Non-Com., B.U.R.
Heating / Air Conditioning	RTU's, Oil-fired boiler, chiller
Fire Suppression	100%
Total Site Area	24 acres
Amount of Site Activity Area	23 acres
Water	Public
Sewer	Public
Community Outlook	Growth Area, Town of Chesapeake Beach

THIS PAGE LEFT BLANK

THIS PAGE LEFT BLANK

THIS PAGE LEFT BLANK

SCHOOL FACILITY

*Calvert High School
520 Fox Run Blvd.
Prince Frederick, MD 20678*

Building Area	236,300 sq. ft.
Number of Floors	2 (partial ground floor section)
Program	9-12
Teaching Stations	55
Special Education	4
Total Teaching Stations	59
Rated Capacity	1148
Age of Structure	Constructed 2013
Renovations and Additions	
General Structure	Steel & Masonry Non-Com., B.U.R.
Heating / Air Conditioning	AHU's, Gas-fired boiler, chiller
Fire Suppression	100%
Total Site Area	83.3 acres
Amount of Site Activity Area	60 acres
Water	Public
Sewer	Public
Community Outlook	Growth Area, Prince Frederick Town Center

THIS PAGE LEFT BLANK

THIS PAGE LEFT BLANK

THIS PAGE LEFT BLANK

SCHOOL FACILITY

*Huntingtown High School
4125 N. Solomons Island Road
Huntingtown, MD 20639*

Building Area	206,248 sq. ft.
Number of Floors	3
Program	9-12
Teaching Stations	59
Special Education	2
Total Teaching Stations	61
Rated Capacity	1500
Age of Structure	Constructed 2004
Renovations and Additions	None
General Structure	Masonry Non-Com., B.U.R.
Heating / Air Conditioning	AHU's, Oil-fired boiler, chiller
Fire Suppression	100%
Total Site Area	89 acres
Amount of Site Activity Area	70 acres
Water	Private Well
Sewer	Public
Community Outlook	Stabilized Area, Huntingtown Town Center

THIS PAGE LEFT BLANK

THIS PAGE LEFT BLANK

THIS PAGE LEFT BLANK

SCHOOL FACILITY

*Northern High School
2950 Chaneyville Road
Owings, MD 20736*

Building Area	248,973 sq. ft.
Number of Floors	3
Program	9-12
Teaching Stations	66
Special Education	4
Total Teaching Stations	70
Rated Capacity	1440
Age of Structure	Constructed 2020
Renovations and Additions	None
General Structure	Steel Frame & Masonry Non-Com., B.U.R.
Heating / Air Conditioning	Geothermal System
Fire Suppression	100%
Total Site Area	112.92 acres (shared with Northern Middle)
Amount of Site Activity Area	80 acres
Water	Private Well shared with Northern Middle
Sewer	Sewage Treatment Plant shared with Northern Middle
Community Outlook	Growth Area, Dunkirk Town Center

THIS PAGE LEFT BLANK

THIS PAGE LEFT BLANK

THIS PAGE LEFT BLANK

THIS PAGE LEFT BLANK

THIS PAGE LEFT BLANK

THIS PAGE LEFT BLANK

THIS PAGE LEFT BLANK

SCHOOL FACILITY

*Patuxent High School
12485 Southern Connector Blvd.
Lusby, MD 20657*

Building Area	185,900 sq. ft.
Number of Floors	3
Program	9-12
Teaching Stations	52
Special Education	3
Total Teaching Stations	55
Rated Capacity	1230
Age of Structure	Constructed 1996
Renovations and Additions	None
General Structure	Masonry Non-Com., B.U.R.
Heating / Air Conditioning	AHU's, Gas-fired boiler, chiller
Fire Suppression	100%
Total Site Area	73 acres
Amount of Site Activity Area	63 acres
Water	Public
Sewer	Public
Community Outlook	Growth Area, Lusby Town Center

THIS PAGE LEFT BLANK

THIS PAGE LEFT BLANK

THIS PAGE LEFT BLANK

SCHOOL FACILITY

*Career and Technology Academy
330 Dorsey Road
Prince Frederick, MD 20678*

Building Area	113,354 sq. ft.
Number of Floors	2
Program	CTE – 10 – 12
Teaching Stations	36
Special Education	0
Total Teaching Stations	36
Rated Capacity	445
Age of Structure	Constructed 1970
Renovations and Additions	2005
General Structure	Steel Frame & Masonry Non-Com., B.U.R.
Heating / Air Conditioning	AHU's, Gas-fired boiler, chiller
Fire Suppression	100%
Total Site Area	7 acres
Amount of Site Activity Area	None
Water	Private Well
Sewer	Public
Community Outlook	Growth Area, Prince Frederick Town Center

THIS PAGE LEFT BLANK

THIS PAGE LEFT BLANK

THIS PAGE LEFT BLANK

Calvert County Public Schools
1305 Dares Beach Road
Prince Frederick, Maryland 20678

**Policy Statement #4400 (Supporting Services) of the Board of Education Regarding
Educational Facilities Planning and School Geographical Attendance Areas**

I. Purpose

- A. To maintain throughout the county a reasonably uniform and efficient system of public schools that is designed to provide high quality education and equitable educational opportunity for all children
- B. To provide for the development of an educational facilities master plan that leads to the development of a capital improvement plan
- C. To establish a new public school or expand existing facilities if the Board of Education determines it is advisable
- D. To provide a process to be used in making decisions to consolidate and close schools
- E. To determine with the advice of the Superintendent the geographical attendance area for each school

II. Definitions

- A. Capital Improvement Plan – the annual Public School Construction Program submission outlining the funding requests for new school construction, renovations, and systemic improvement projects
- B. Educational Facility Master Plan – the annual Public School Construction Program submission which elaborates on the school system’s principles of planning and evaluating community needs, methods of instruction and educational objectives as they relate to school facilities (including schools and support facilities)
- C. Geographical Attendance Area – the current school attendance boundaries approved by the Board of Education that are used to determine the home school of attendance for students
- D. Overcrowded – the student enrollment at a school exceeds the school’s capacity to such a degree that one or more of the following conditions exist: school enrollment is beyond its State Rated Capacity; there are an insufficient number of general classroom places; the building core cannot support the school

Supporting Services #4400

Adopted: 1/11/07

Revised: 6/9/11; 6/12/14; 7/12/18; 6/10/21

Page 1 of 3

Appendix P

population; and/or school space is used for other than its usual intended purpose in order to deliver instruction

- E. Underutilized- the student enrollment at a school is below the school's capacity and is projected to remain at that low level for the foreseeable future to such a degree that it is programmatically and/or financially advisable to close the school

III. Policy Statement

- A. The Board of Education recognizes its obligation to provide a reasonably uniform and efficient system of public schools that is designed to provide high quality education and equitable educational opportunity for all children. The Board fulfills this responsibility in part by ensuring the development of a well-designed, long-range educational facilities plan which is regularly reviewed and revised to meet the needs of high-quality educational programming, changing enrollment patterns, and geographic shifts in population. In addition, the Board strives to ensure that facilities are used efficiently and effectively.
- B. The Board recognizes that broad stakeholder input into the educational facilities planning process and the establishment of school geographical attendance areas is necessary for successful implementation of developed plans.
- C. The Board is committed to working with the Superintendent and appropriate local and state officials to secure the necessary resources to implement the educational facilities master plan.
- D. The Board will consider adjusting school geographical attendance areas when a school is constructed, closed, an addition to an existing school is constructed, when one or more schools are or are predicted to become overcrowded or underutilized, or when an emergency situation arises.
- E. When establishing the school geographical attendance areas, the Board will consider facility utilization, impact on educational programming, enrollment trends, student demographics, number of students from outside of the established school geographical attendance areas attending affected schools, transportation, cost, impact to communities and neighborhoods, and enrollment patterns among school levels. These factors are not listed in priority order, and, while each of these factors will be considered, it may be impractical to reconcile each and every school geographical attendance adjustment with each and every factor.

IV. Delegation of Authority

Supporting Services #4400

Adopted: 1/11/07

Revised: 6/9/11; 6/12/14; 7/12/18; 6/10/21

Page 2 of 3

- A. The Superintendent of Schools is directed to develop administrative procedures to implement this policy in accordance with all local policies and local, state and federal laws and regulations and to communicate this policy and accompanying procedures to all relevant parties.
- V. Exceptions
 - A. There are no exceptions to this policy. However, the Board by majority vote may temporarily suspend all or part of this policy. Suspension of all or part of this policy, however, in no way relieves the Board of its obligation to comply with the pertinent local, state and federal laws and regulations and the rules and regulations of the Maryland State Board of Education and the Maryland State Department of Education.
- VI. Review
 - A. This policy will be reviewed at the end of four years, or sooner, if approved by majority vote of the Board of Education in public session.
- VII. Effective Date
 - A. This policy is effective June 10, 2021.

Citations

State Law: §§4-101, 4-108, and 4-109; 4-115, 4-120 Education Article, Annotated Code of Maryland
State Reg.: COMAR 13A.02.09; 14.39.02.02
Federal Law:
Adm. Reg.:
Neg. Agr.:
Other Citation:

Related Policy

3925 Regarding Student Transfers

Supporting Services #4400
Adopted: 1/11/07
Revised: 6/9/11; 6/12/14; 7/12/18; 6/10/21
Page 3 of 3

Calvert County Public Schools
1305 Dares Beach Road
Prince Frederick, MD 20678

**Administrative Procedures for Policy #4400 (Supporting Services)
of the Board of Education
Regarding Educational Facilities Planning and School Geographical Attendance Areas**

I. Definitions

- A. Capital Improvement Plan – the annual Public School Construction Program submission outlining the funding requests for new school construction, renovations, and systemic improvement projects
- B. Educational Facilities Master Plan – the annual Public School Construction Program submission which elaborates on the school system’s principles of planning and evaluating community needs, methods of instruction and educational objectives as they relate to school facilities (including schools and support facilities)
- C. Geographical Attendance Area – the current school attendance boundaries approved by the Board of Education that are used to determine the home school of attendance for students
- D. Overcrowded – the student enrollment at a school exceeds the school’s capacity to such a degree that one or more of the following conditions exist: the school enrollment is beyond its State Rated Capacity, there are an insufficient number of general classroom spaces, the building core cannot support the school population, school space is used for other than its usual intended purpose in order to deliver instruction.
- E. Underutilized- the student enrollment at a school is below the school’s capacity and is projected to remain at that low level for the foreseeable future to such a degree that it is programmatically and/or financially advisable to close the school

II. Educational Facilities Master Plan

- A. The Superintendent or designee shall annually develop an educational facilities master plan in accordance with COMAR 14.39.02.02.
- B. As per COMAR, the plan will include current and projected enrollment data. If this data indicates that school facility use, including renovations, additions, new construction, or program changes, may have the potential to require adjustments to school geographical attendance areas, the Superintendent will ensure that this is noted in the plan.

Supporting Services 4400.1
Procedure Written: 4/18/07
Procedure Revised: 10/11/11; 06/12/14; 4/23/21
Page 1 of 5

- C. The Superintendent or designee shall present a proposed plan to the Board of Education for consideration. The Board shall make the proposed plan available for public comment for a minimum of four weeks.
- D. The Board will adopt a final plan and submit it to the Interagency Committee on Public School Construction for consideration.

III. Capital Improvement Program

- A. The Superintendent or designee shall annually develop a capital improvement program which is consistent with the educational facilities master plan in accordance with COMAR 14.39.02.03. During the development of the program, the Superintendent or designee will communicate regularly with county staff.
- B. The Superintendent or designee shall present the proposed plan to the Board of Education for consideration. The Board shall make the proposed plan available for public comment for a minimum of four weeks.
- C. The Board will adopt a final plan and submit it to the Interagency Committee on Public School Construction for consideration.
- D. The Superintendent or designee will work to secure funding from the county and state governments for the projects in the program.

IV. New School Site selection

- A. When it is determined that an additional school is needed and the state has approved funding for planning, the Superintendent or designee, in conversation with the Board of Education and County and State governmental agencies, will identify possible school locations.
- B. The Superintendent or designee will conduct preliminary negotiations on the purchase of real property. Final negotiations and purchase of real property for school facility construction will be conducted upon approval by the Board of Education.

V. Facility Design

- A. For new construction projects or major facility renovations, the Superintendent will form a committee, which will include representatives from appropriate school system departments, schools, governmental agencies, and the community-at-large.
- B. The committee will develop a proposed educational specification for the facility.
- C. The proposed educational specification will be presented to the Board of Education for consideration. The Board will make the proposed plan available for public comment for

Supporting Services 4400.1

Procedure Written: 4/18/07

Procedure Revised: 10/11/11; 06/12/14; 4/23/21

Page 2 of 5

a minimum of four weeks before adopting a final plan.

VI. Geographical Attendance Areas

- A. The Board, with the advice of the Superintendent, will determine the geographical attendance area of each school.
- B. The Board may direct the Superintendent to develop a recommendation regarding changes to the geographical attendance areas to two or more schools when (as stipulated in Policy 4400):
 - 1. A new school constructed;
 - 2. A school is closed or schools are consolidated;
 - 3. An addition to an existing school is constructed;
 - 4. When one or more schools are or are predicted to become overcrowded or underutilized; or
 - 5. An emergency situation arises.
- C. In an emergency (e.g. fire, flood, safety hazard, natural disaster), the Superintendent will take immediate and temporary action until the Board meets to address the situation and adopts a plan of action to handle the emergency.
- D. When the situation is not an emergency and the Superintendent determines that redistricting is advisable, the Superintendent will initiate the redistricting process by recommending to the Board no later than September 15 that geographical attendance areas be changed for the following school year. If the Board approves the recommendation, the residents of Calvert County will be notified through regular school system communication channels.
- E. The Superintendent will form a committee to formulate draft geographical attendance area plans and will include the following members:
 - 1. The Director of Student Services (chair)
 - 2. PTA President or PTA representative of each school involved in the redistricting
 - 3. A member of the Citizen Advisory Committee
 - 4. A representative from the Calvert County Council of PTAs (this representative may not have a child attending one of the schools involved in the redistricting)
 - 5. Director of Planning & Zoning or designee

Supporting Services 4400.1

Procedure Written: 4/18/07


Procedure Revised: 10/11/11; 06/12/14; 4/23/21

Page 3 of 5

6. One principal to represent the schools involved
 7. One representative from the Department of Student Services
 8. One representative from the Department of Transportation
 9. The Director of Construction and/or the Director of School Facilities
- F. The advisory committee will meet approximately five (5) times over a 2-3 month period. The following items will be covered:
1. First Meeting – Review principles of establishing school geographical attendance areas as defined in Policy 4400
 2. Second Meeting - Form subcommittees to begin developing draft school geographical attendance areas
 3. Third Meeting – Subcommittees continue to work on draft plans
 4. Fourth Meeting – Subcommittees present possible plans to the committee at large
 5. Fifth Meeting – The committee as a whole will attempt to identify at least three draft plans, but in no case will identify less than two draft plans
- G. Per Policy 4400, the following factors, which are not listed in priority order, will be considered by the committee as it prepares the draft plans:
1. Facility utilization,
 2. Impact on educational programming,
 3. Enrollment trends,
 4. Student demographics,
 5. Number of students from outside of the established school geographical attendance areas attending affected schools,
 6. Transportation
 7. Cost
 8. Impact to communities and neighborhoods, and
 9. Enrollment patterns among school levels.
- H. The final report of the committee will address all nine factors listed above in each draft plan.

- I. The draft school geographical attendance area plans will be given to the Superintendent. The Superintendent will present to the Board in a regularly scheduled Work Session the plan(s) he or she deems effective. Once presented to the Board, copies of all proposals as well as the committee's final report will be posted on the school system's website, available in the school system's Central Office, forwarded to each affected school, and provided to any member of the public who has requested a copy.
 - J. After the presentation, the Board of Education will hold two public hearings. Each hearing will be advertised at least ten calendar days prior to the hearing and will be held at a school. The hearings will provide the public the opportunity to provide oral and written testimony. In addition to the hearings, the public will be given one month to submit written testimony. The committee will consider all comments and proposals, whether oral or written, in relation to the nine factors listed in VI.G. above.
 - K. At a regularly scheduled Business Meeting, the Board will adopt a school geographical attendance area plan. The adopted school geographical attendance areas may be identical to one of the draft plans, or it may be a modification developed by the Board. If a new area is introduced where the affected community has not been previously notified of the potential geographical attendance area change and did not have the opportunity to comment, an additional public hearing will be held.
 - L. The Board's final decision will be made no later than April 1, except in emergency situations.
 - M. The Director of Student Services will prepare maps and descriptions of the final geographical attendance areas and will distribute them to the affected schools.
- VII. School Closures and Consolidations (see COMAR 13A.02.09)
- A. When considering closing or consolidating a school, the Board shall direct the Superintendent to examine the feasibility of such action.
 - B. The Superintendent shall prepare reports as necessary to describe the proposed action.
 - C. The Board will comply with the requirements of COMAR 13A.02.09 regarding public review and comment before taking final action.

Directory of Schools

Elementary		Middle	
<u>Barstow Elementary School</u> Principal: Sarah Weisner 443-550-9510 Fax: 410-286-4050 295 Williams Road Prince Frederick, MD 20678 Assistant Principal: Regina Barnes	<u>Beach Elementary School</u> Principal: Brock Fulton 443-550-9520 Fax: 410-286-4014 7900 Old Bayside Road Chesapeake Beach, MD 20732 Assistant Principal: Alisandra Ravenel	<u>Calvert Middle School</u> Principal: Rebecca Bowen 443-550-8970 Fax: 410-286-4007 655 Chesapeake Boulevard Prince Frederick, MD 20678 Assistant Principal: Chandra Fleet	<u>Mill Creek Middle School</u> Principal: Shelley Amstutz 443-550-9190 Fax: 410-286-4024 12200 Southern Connector Boulevard Lusby, MD 20657 Assistant Principal: Matt Deegan
<u>Calvert Elementary School</u> Principal: Christina Harris 443-550-9550 Fax: 410-286-4015 1450 Dares Beach Road Prince Frederick, MD 20678 Assistant Principal: Krysten Sneade	<u>Dowell Elementary School</u> Principal: Jason Patton 443-550-9480 Fax: 410-286-4016 12680 H.G. Trueman Road Lusby, MD 20657 Assistant Principal: Denise Harbaugh	<u>Northern Middle School</u> Principal: Jamie Webster 443-550-9230 Fax: 410-286-4025 2954 Chaneyville Road Owings, MD 20736 Assistant Principal: Beth Wagner	<u>Plum Point Middle School</u> Principal: Danielle Swann 443-550-9170 Fax: 410-286-4009 1475 Plum Point Road Huntingtown, MD 20639 Assistant Principal: Elliott Tyler
<u>Huntingtown Elementary School</u> Principal: Eric Ruffo 443-550-9360 Fax: 410-286-4005 4345 Huntingtown Road Huntingtown, MD 20639 Assistant Principal: Nicole Jimney	<u>Mt. Harmony Elementary School</u> Principal: Charles Trefl 443-550-9620 Fax: 410-286-4017 900 West Mt. Harmony Road Owings, MD 20736 Assistant Principal: Elizabeth Megonigal	<u>Southern Middle School</u> Principal: James Carpenter 443-550-9250 Fax: 410-286-4026 9615 H.G. Trueman Road Lusby, MD 20657 Assistant Principal: Jamie Smith	<u>Windy Hill Middle School</u> Principal: Mark Whidden 443-550-9310 Fax: 410-286-4027 9560 Boyd's Turn Road Owings, MD 20736 Assistant Principal: Kristen Ratcliff
<u>Mutual Elementary School</u> Principal: Stacy Hawxhurst 443-550-9650 Fax: 410-286-4018 1455 Ball Road Port Republic, MD 20676 Assistant Principal: Lynn Cunningham, Melissa Huffman	<u>Patuxent Appeal Campus - Appeal</u> Principal: Michelle Beckwith 443-550-9670 Fax: 410-286-4019 11655 H.G. Trueman Road Lusby, MD 20657	High	
<u>Patuxent Appeal Campus - Patuxent</u> Principal: Michelle Beckwith 443-550-9710 Fax: 410-286-4020 35 Appeal Lane Lusby, MD 20657 Assistant Principal: Ryan Crowley Assistant Principal: Cristin Williams	<u>Plum Point Elementary School</u> Principal: Beatriz Gonzalez-Wilson 443-550-9730 Fax: 410-286-4021 1245 Plum Point Road Huntingtown, MD 20639 Assistant Principal: Jenean Deahl	<u>Calvert High School</u> Principal: Andrea Young 443-550-8880 Fax: 410-286-4032 520 Fox Run Boulevard Prince Frederick, MD 20678 Assistant Principals: Dona Hook, James Rodenhaver, Trey Sirman	<u>Huntingtown High School</u> Principal: Beth Morton 443-550-8810 Fax: 410-286-4011 4125 N. Solomons Island Road Huntingtown, MD 20639 Assistant Principals: Larry Butler, Abbe Gray, Rob Lawrence,
<u>St. Leonard Elementary School</u> Principal: Tammie Rudzinski 443-550-9760 Fax: 410-286-4022 5370 St. Leonard Road St. Leonard, MD 20685 Assistant Principal: Alkeisha Williams	<u>Sunderland Elementary School</u> Principal: Pamela Kasulke 443-550-9390 Fax: 410-286-4006 150 Clyde Jones Road Sunderland, MD 20689 Assistant Principal: Amanda Merillat	<u>Northern High School</u> Principal: Kevin Simmons 443-550-8950 Fax: 410-286-4034 2950 Chaneyville Road Owings, MD 20736 Assistant Principals: Sarah Bento, Mark Gladfelter, James Kurtz, Darrel Prioleau	<u>Patuxent High School</u> Principal: Anthony Barone 443-550-8840 Fax: 410-286-4036 12485 Southern Connector Boulevard Lusby, MD 20657 Assistant Principals: Michelle Bell, Bert Forrest, Anne Rickwood
<u>Windy Hill Elementary School</u> Principal: Michele Schmidt 443-550-9790 Fax: 410-286-4023 9550 Boyd's Turn Road Owings, MD 20736 Vice Principal: Rebecca Brennan		Education Centers	
		<u>Calvert Country School</u> Principal: Racheal Lindauer 443-550-9910 Fax: 410-286-4038 1350 Dares Beach Road Prince Frederick, MD 20678	<u>Career and Technology Academy</u> Principal: Carrie Akins 443-550-9940 Fax: 410-286-4039 330 Dorsey Road Prince Frederick, MD 20678 Assistant Principal: Travis Mister

Appendix Q